

8 7 6 5 4 3 2 1

D

D

C

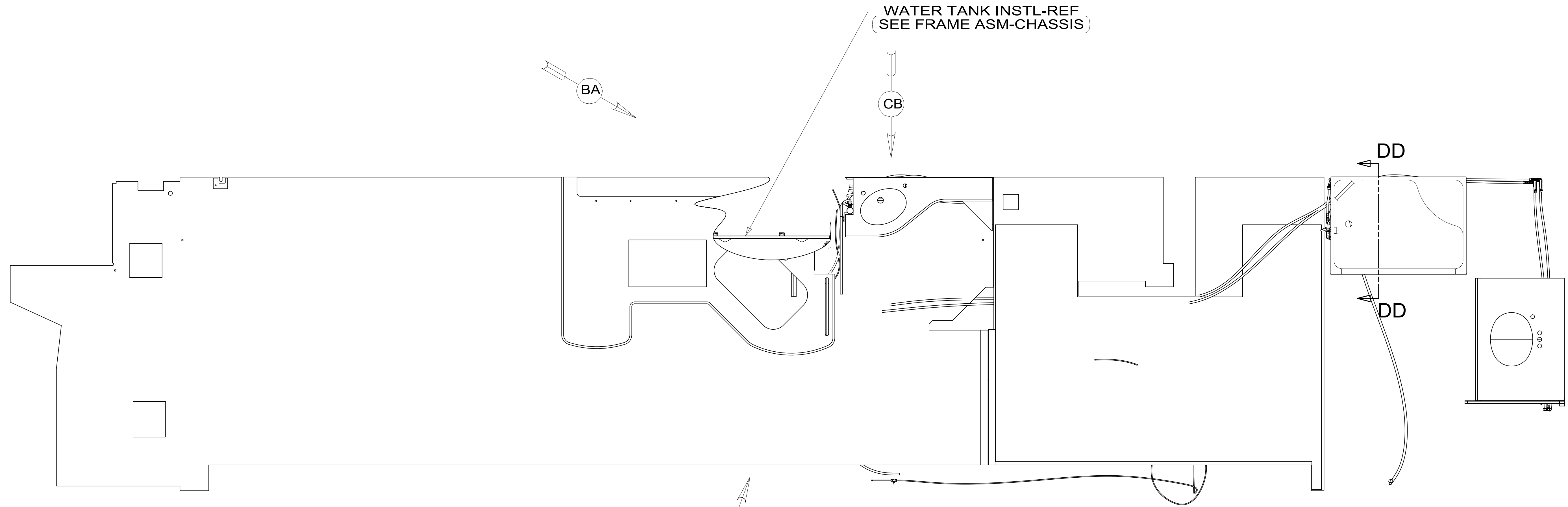
C

B

B

A

A



- 14. FOR INSTALLATION USE SILICON-ADHESIVE 131264-05-CHT. APPLY ON TOP OF PLATE, PLACE COVER ON, AND PUT ADHESIVE AROUND COVER.
- 13. INSTALL FAUCET WITHOUT BASEPLATE.
- 12. SEE STYLING SHEETS.
- 11. REQUIRES 5 GALLONS OF 182955-01-000 ANTIFREEZE FOR WINTERIZATION.
- 10. VALVE MUST REMAIN OPEN AFTER WATER TEST.
- 9. FLUSHING SYSTEM REQUIRES 125697-06-000 INSTRUCTION SHEET.
- 8. ALL CRIMP FITTINGS TO PEX TUBING REQUIRE 1/2" CLAMP 140171-03-000.
- 7. ALL CRIMP FITTINGS TO PEX TUBING REQUIRE 5/8" CLAMP 140171-04-000.
- 6. LABEL HOT AND COLD SUPPLY TUBES AND TAPE FITTING TO TUBE BEFORE CABINET SET TO PREVENT MOVEMENT.
- 5. ADD PIPE WRAP (LADDER SCRAP 110157-02-000) INSULATION.
- 4. ADD TEFLON TAPE 010405-02-000.
- 3. ALL TUBING TO BE SECURED AT 1200 INTERVALS MAXIMUM WITH CLAMP 010495-01-000 AND SCREW 000G67-10-12U OR EQUIVALENT.
- 2. TUBING TO BE INSTALLED WITH SUFFICIENT SLOPE TO PROVIDE DRAINAGE TO NEAREST VALVE.
- 1. PLASTIC FITTINGS TO BE SEALED WITH SEALANT 084456-01-000.

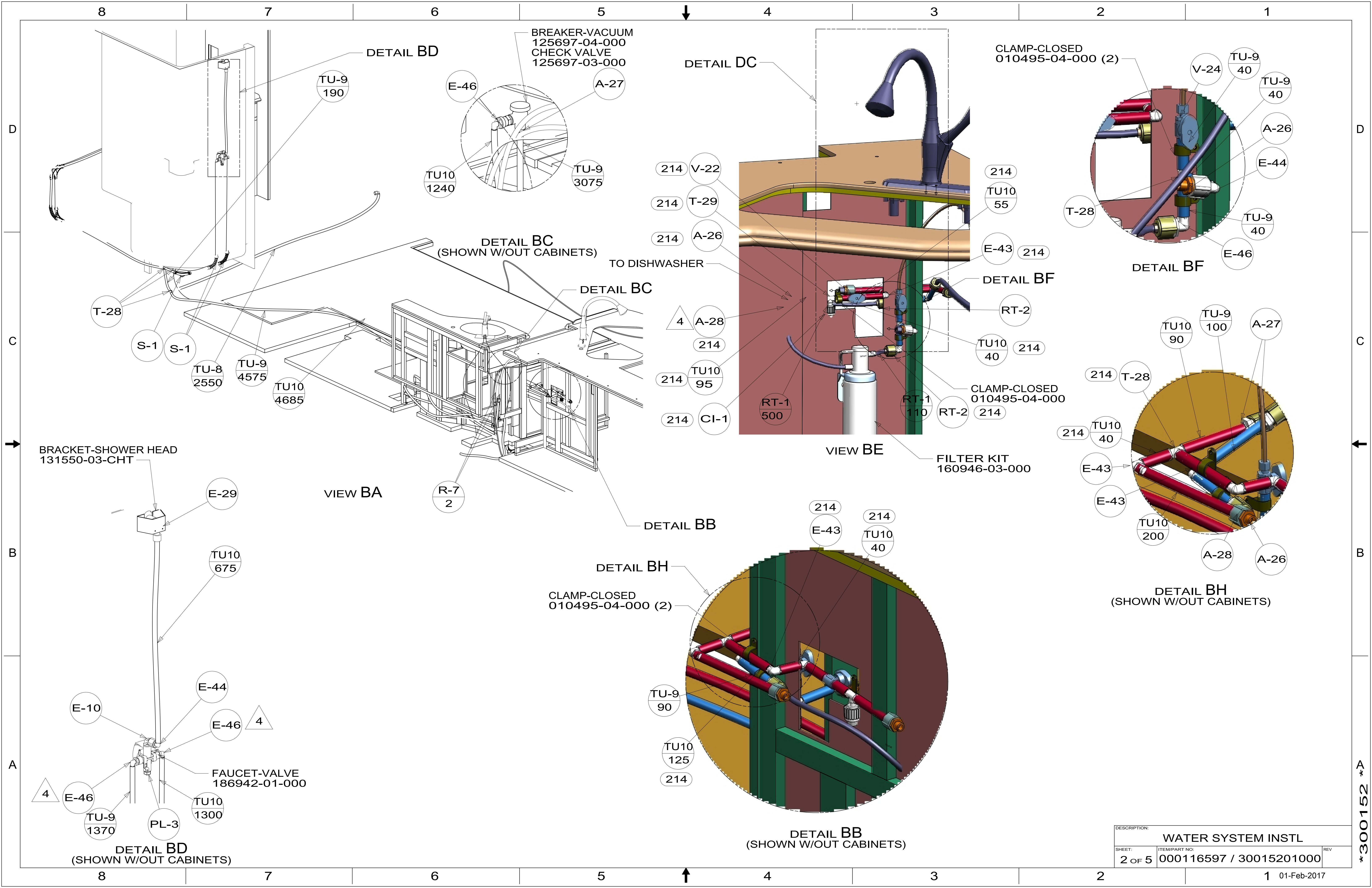
- 9PC TAILGATE PACKAGE
- 21S WASHER & DRYER-PAIR
- 214 DISHWASHER-DRAWER STYLE
- 215 DISHWASHER WITHOUT
- 505 HOSE REEL-WATER,POWERED

X-X

FOR WATER CALLOUTS SEE DWG NO. 116230-01-000

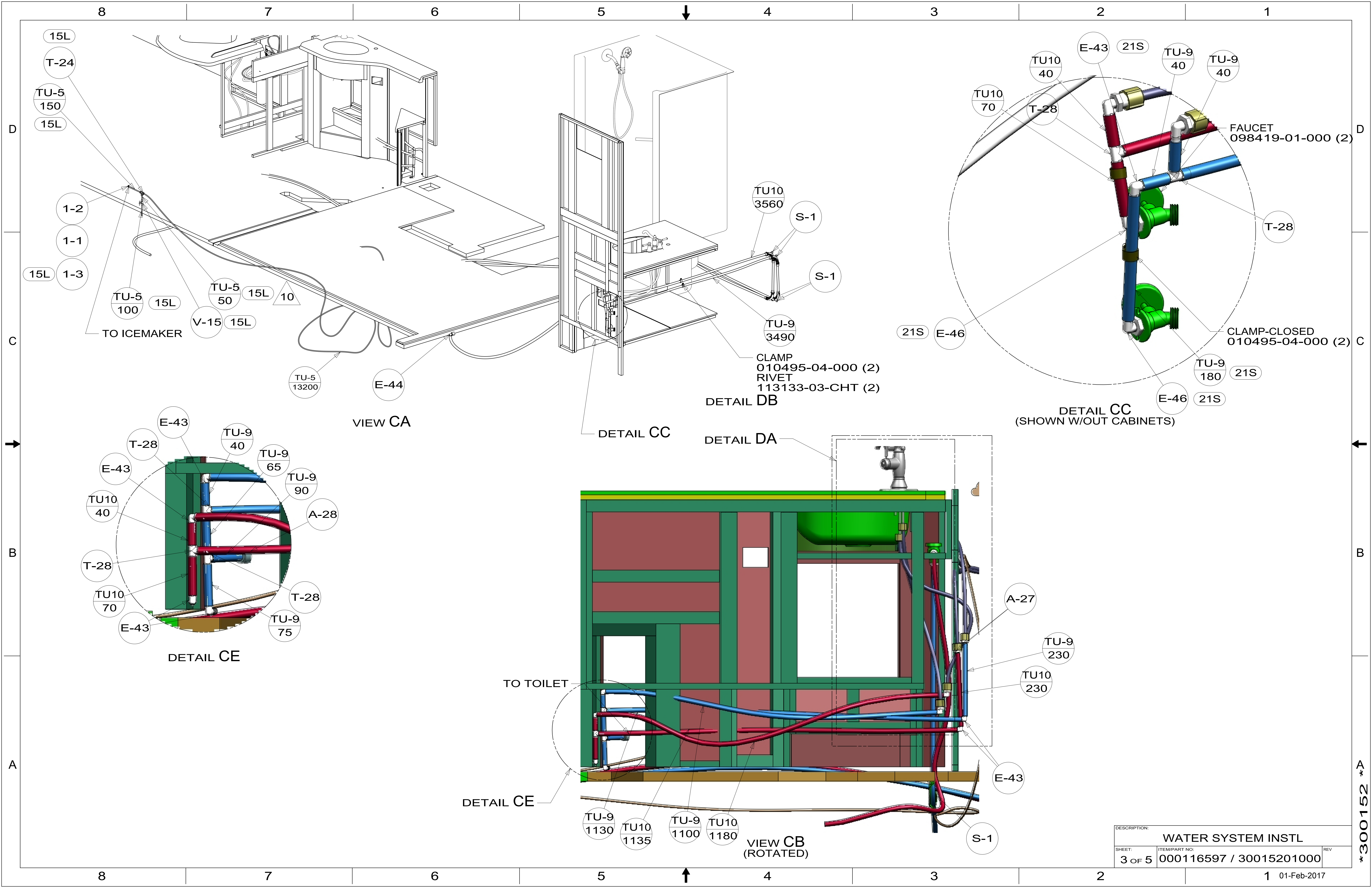
**WINNEBAGO**<sup>®</sup>  
COPYRIGHT 2016 WINNEBAGO INDUSTRIES, INC.

DSNR:		ALL DIMENSIONS ARE IN MILLIMETERS	
DIFTR:		MATERIAL:	
UNSPECIFIED TOLERANCES:			
WHOLE DIM (X)	3		
ONE-PLACE (X.X)	1.5		
TWO-PLACE (X.XX)	0.50		
ANGLE	1°		
REFER TO ES0018 FOR FASTENER TIGHTENING GUIDELINES		WEIGHT: (LBS)	FIRST USED: (REF)
DESCRIPTION: <b>WATER SYSTEM INSTL</b>			
SHEET: 1 OF 5	ITEM/PART NO: 000116597 / 30015201000	REV:	
REF:		1 01-Feb-2017	



DESCRIPTION:		
WATER SYSTEM INSTL		
SHEET:	ITEM/PART NO.:	REV
2 OF 5	000116597 / 30015201000	

\*300152 \*A



15L  
T-24  
TU-5  
150  
15L

1-2  
1-1  
15L  
1-3

TU-5  
100  
15L  
V-15  
15L

TU-5  
50  
15L  
10

TU-5  
13200

E-44

TU10  
3560

S-1

S-1

TU-9  
3490

CLAMP  
010495-04-000 (2)  
RIVET  
113133-03-CHT (2)

DETAIL DB

DETAIL CC

DETAIL DA

TU10  
40

T-28

E-43

21S

TU-9  
40

TU-9  
40

FAUCET  
098419-01-000 (2)

T-28

21S

E-46

CLAMP-CLOSED  
010495-04-000 (2)

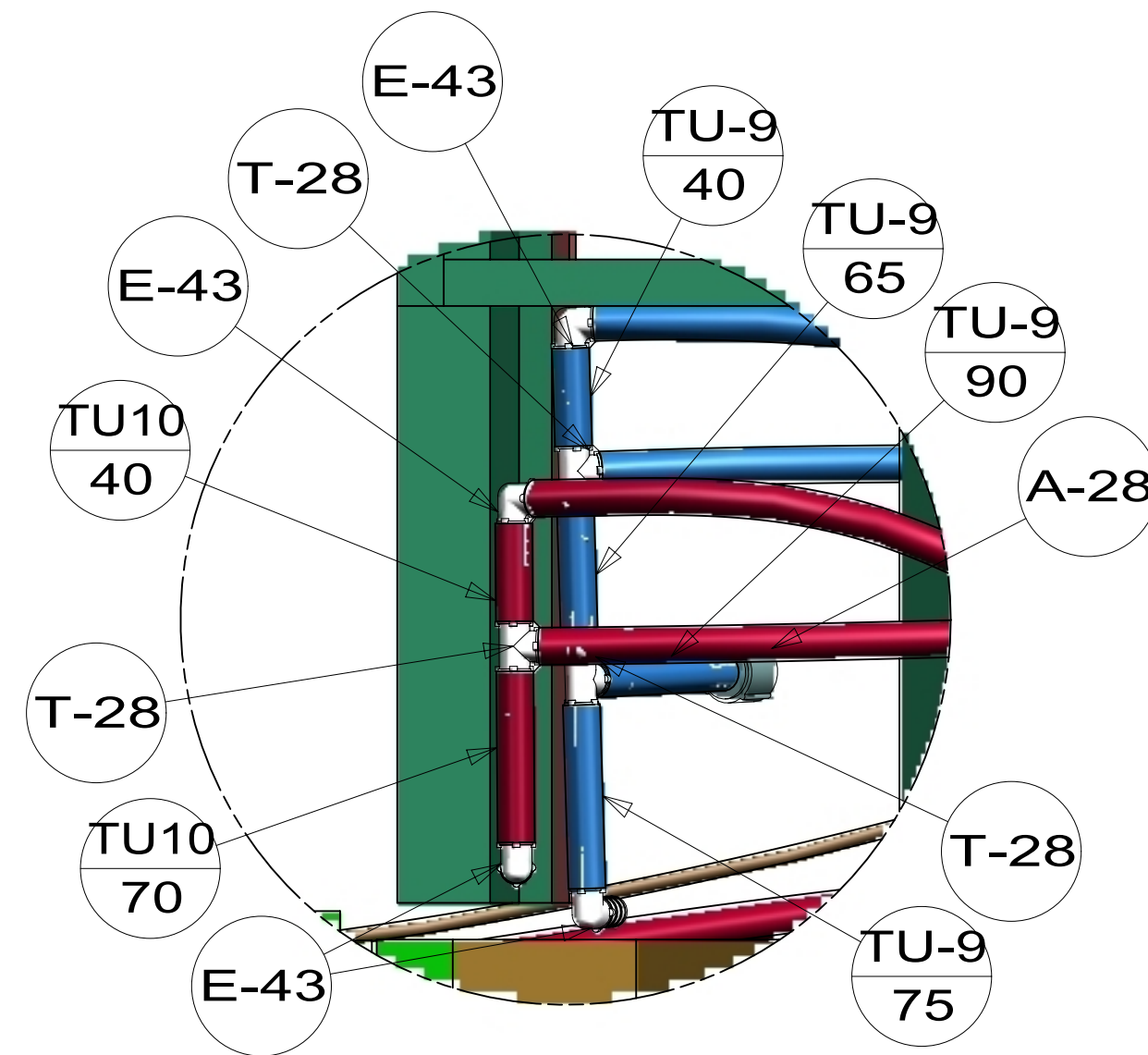
TU-9  
180

21S

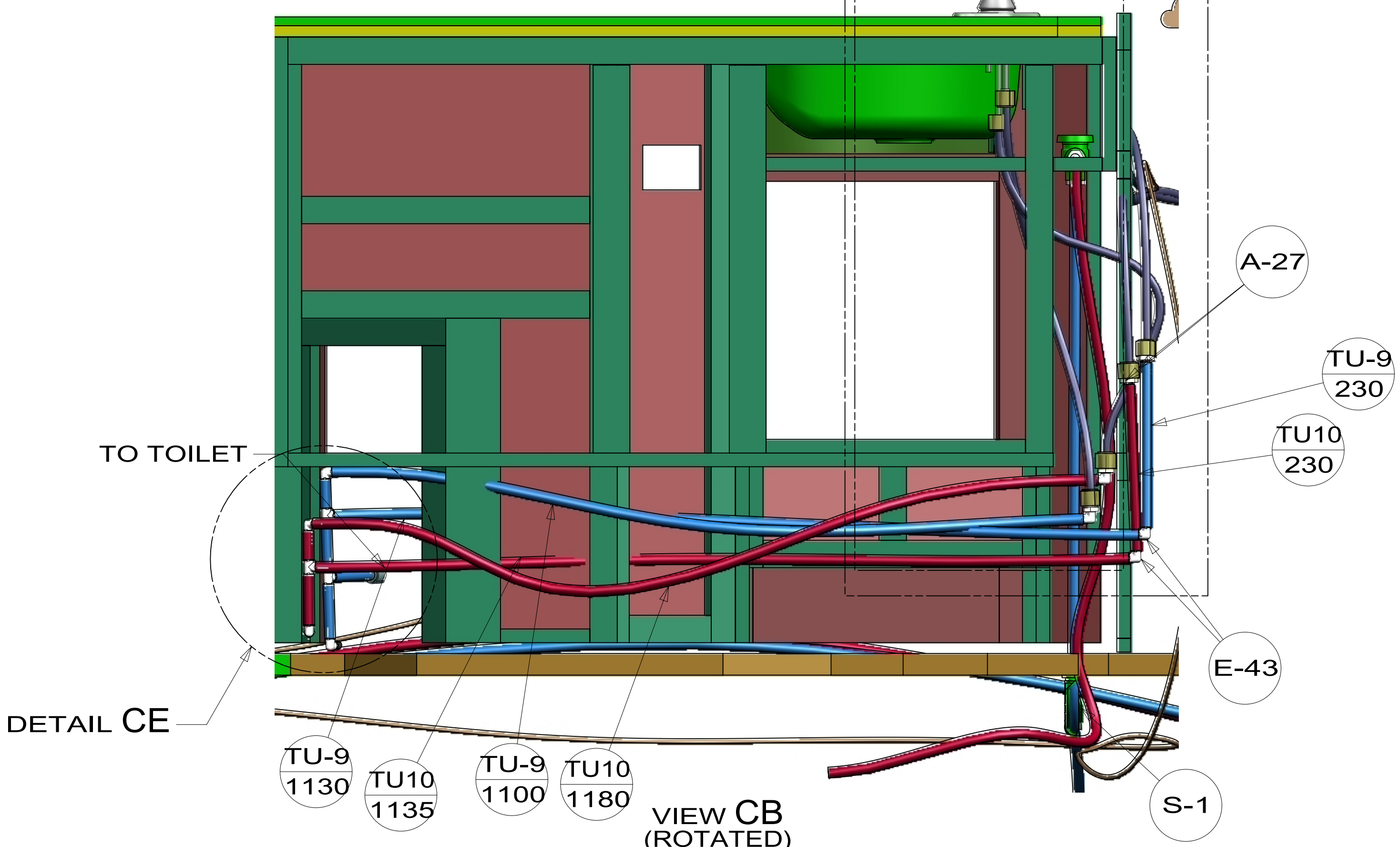
E-46

21S

DETAIL CC  
(SHOWN W/OUT CABINETS)



DETAIL CE



DETAIL CE

VIEW CB  
(ROTATED)

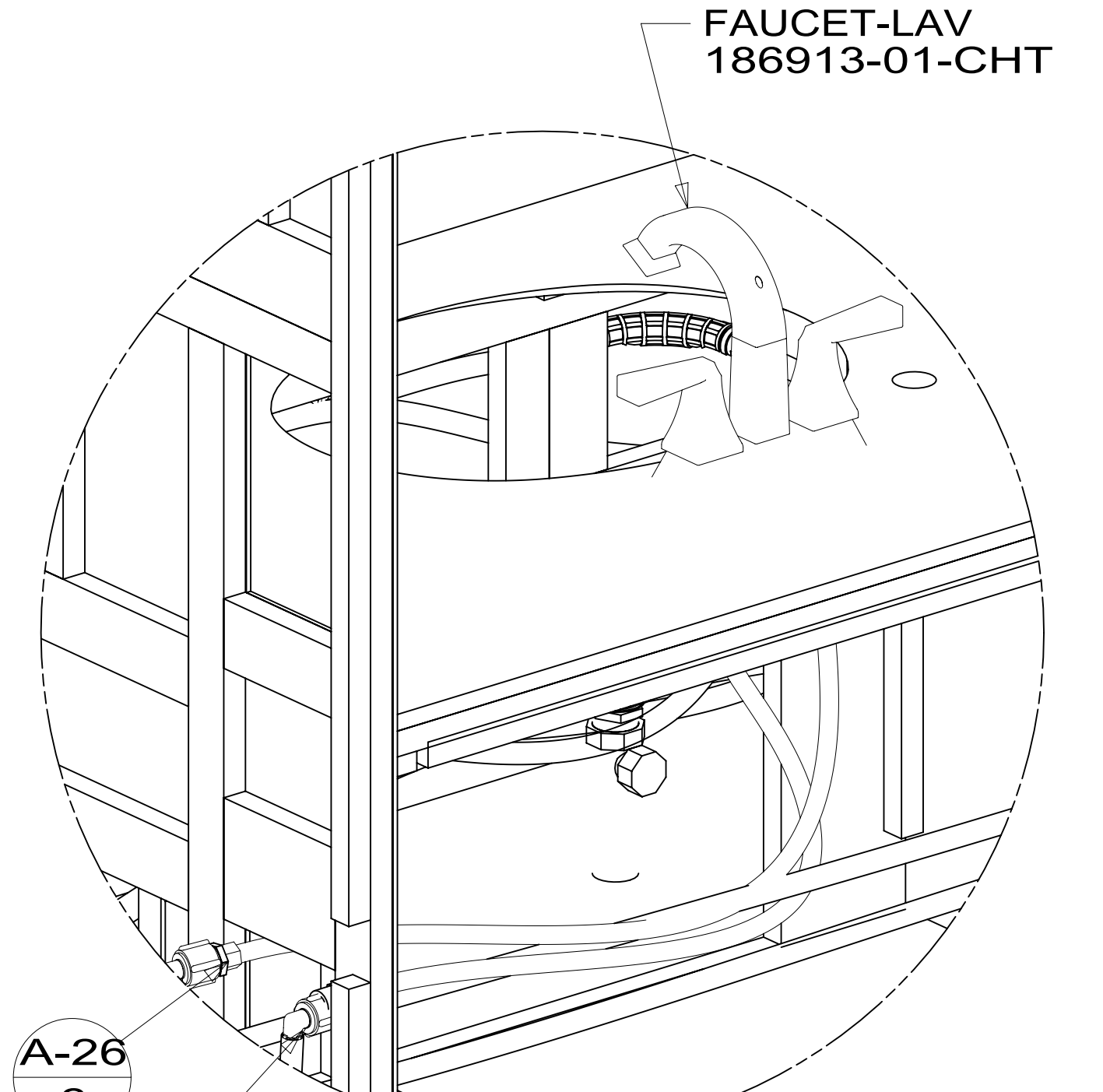
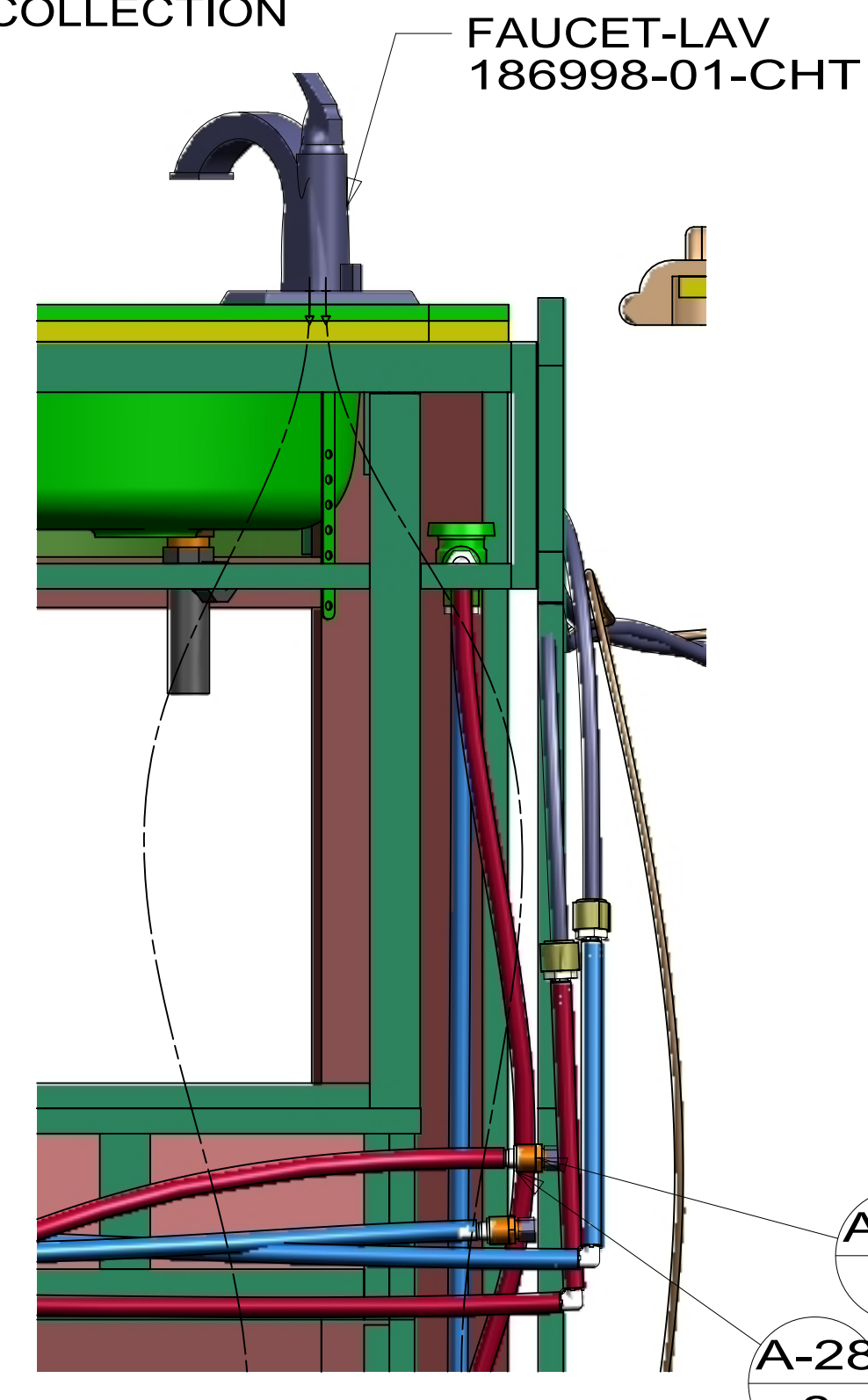
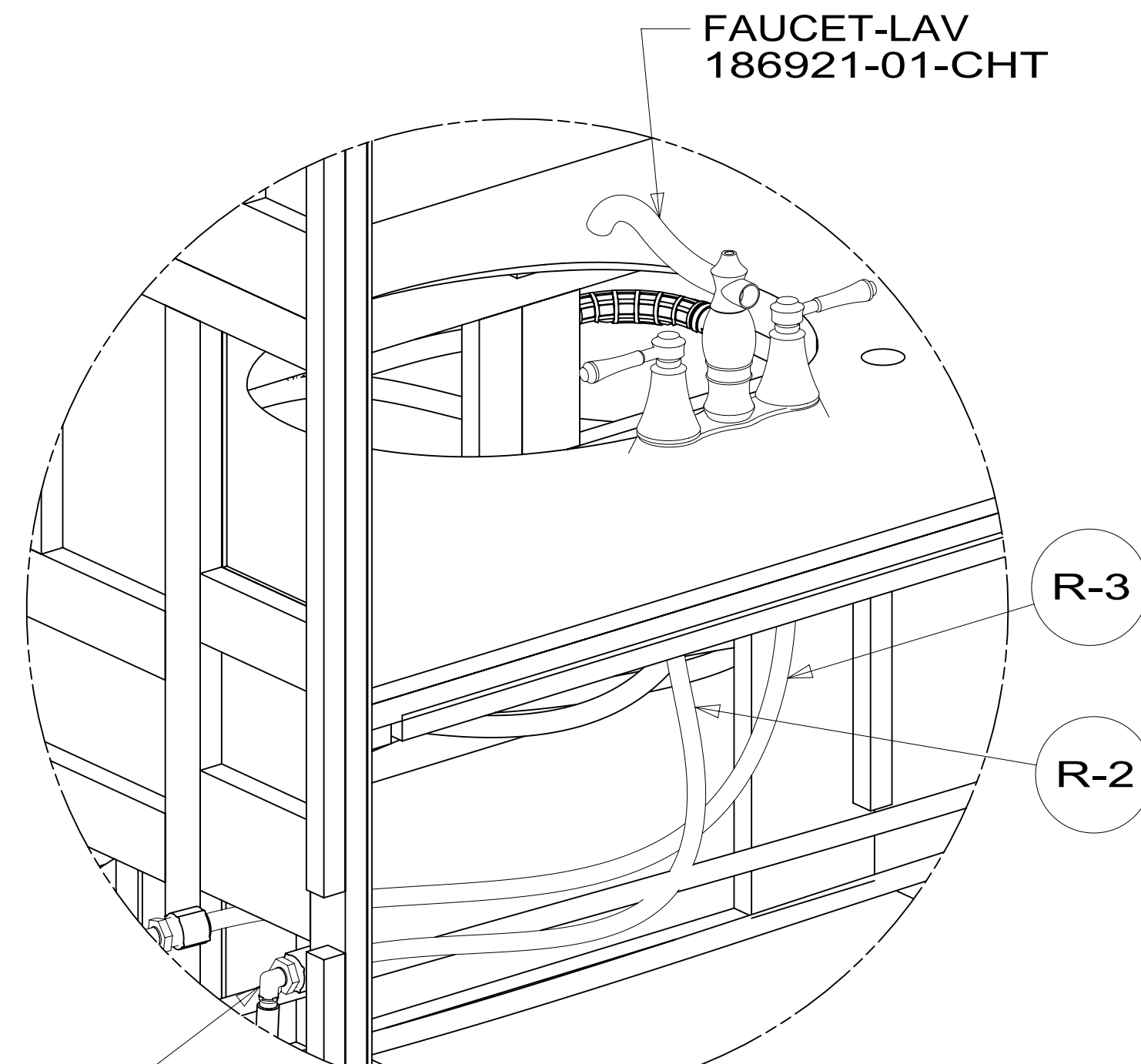
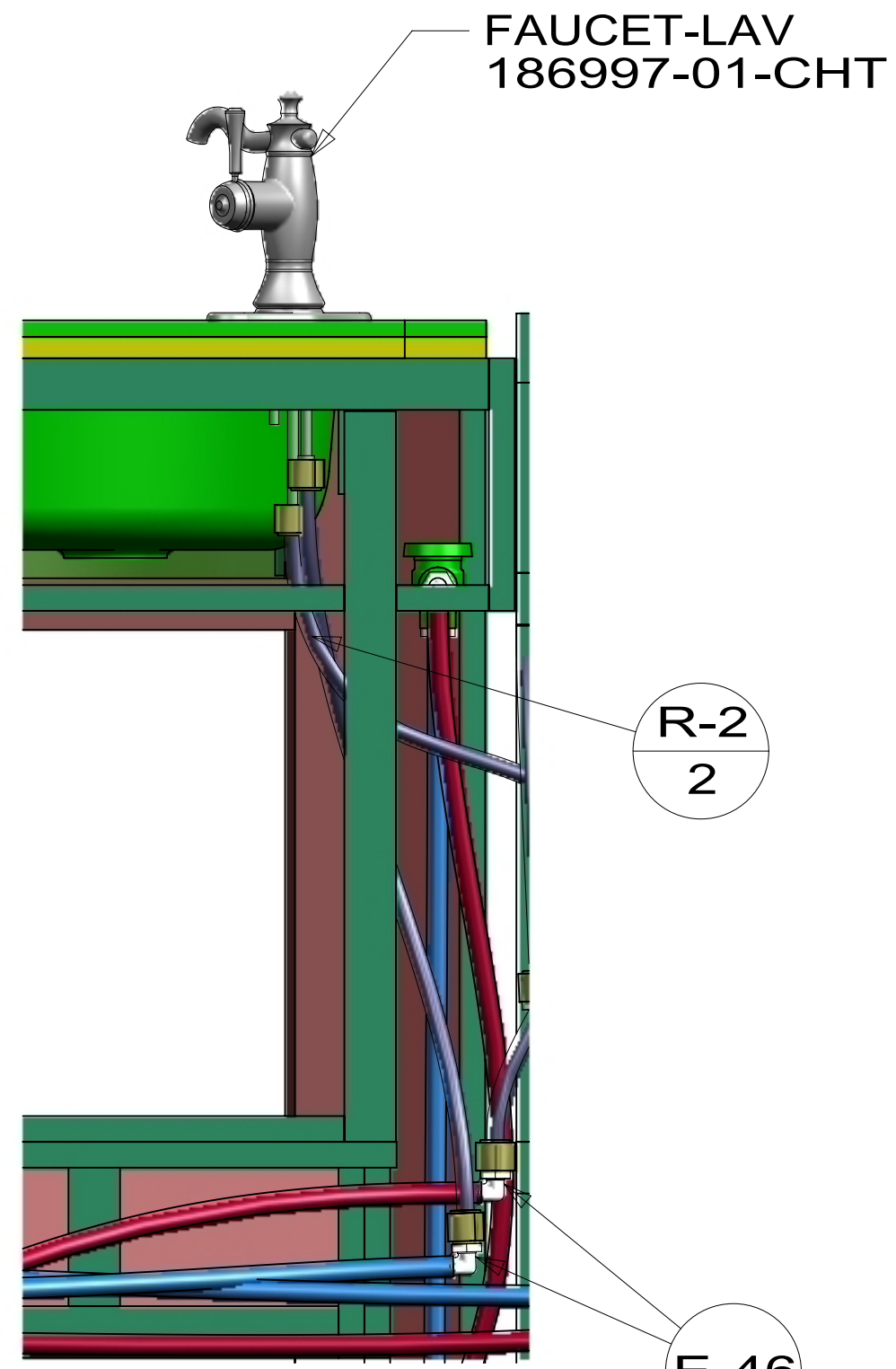
DESCRIPTION:		
WATER SYSTEM INSTL		
SHEET:	ITEM/PART NO.:	REV
3 OF 5	000116597 / 30015201000	1
01-Feb-2017		

\*300152 \*A

8 7 6 5 4 3 2 1

CASSIDY COLLECTION

DRYDEN COLLECTION

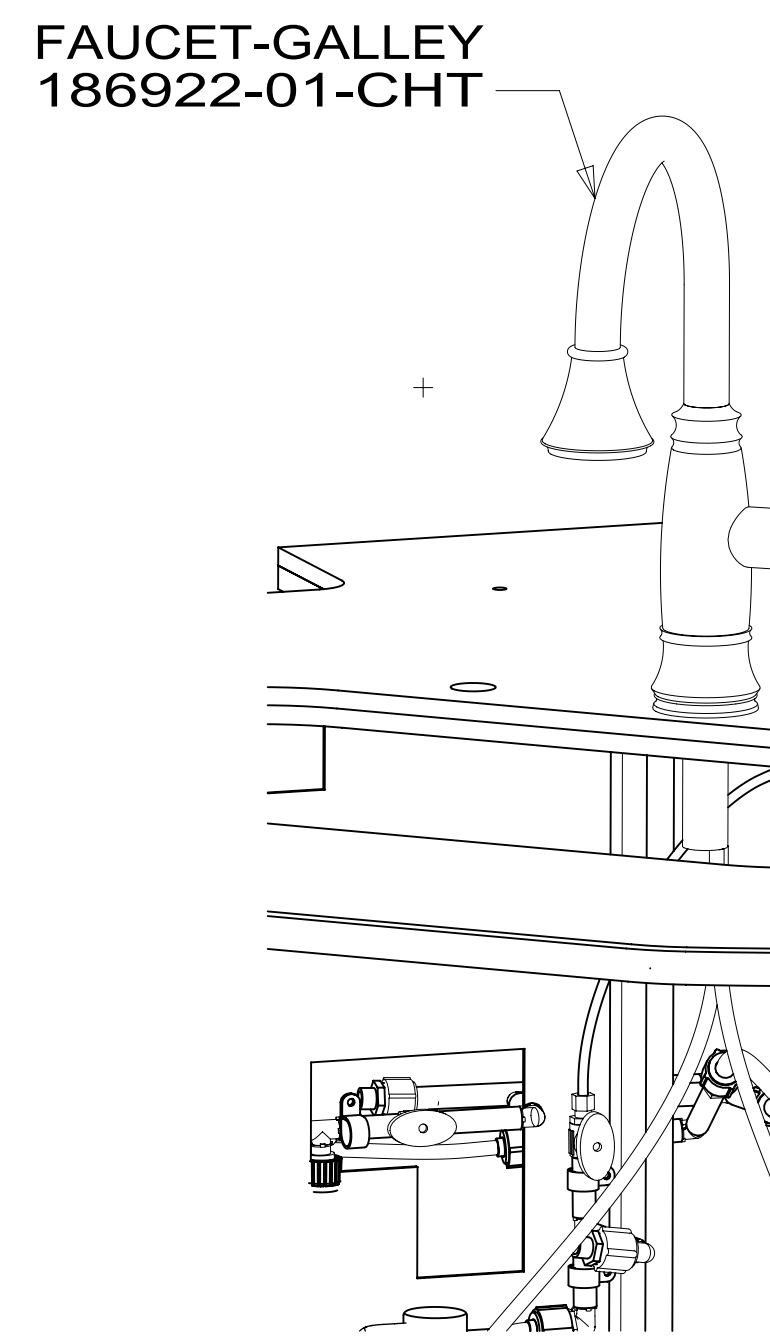


DETAIL DA

DETAIL DB

DETAIL DA

DETAIL DB



SHOWER-6"ARM & FLANGE  
188521-01-CHT  
SHOWER-HAND,WALL MOUNT  
187556-01-CHT

PLATE-COVER  
189861-01-XXX  
PLATE-COVER,SHOWER HEAD  
143218-03-CHT

14

HANDLE  
187001-01-CHT  
TRIM-VALVE  
187555-01-CHT

SECTION DD-DD

13 FAUCET-GALLEY  
186914-01-CHT

SHOWER-HAND,WALL MOUNT  
187557-01-CHT  
ELBOW-WALL,SQUARE  
187559-01-CHT

PLATE-COVER  
189861-02-XXX  
PLATE-COVER,SHOWER HEAD  
143218-03-CHT

14

TRIM-VALVE  
187558-01-CHT

SECTION DD-DD

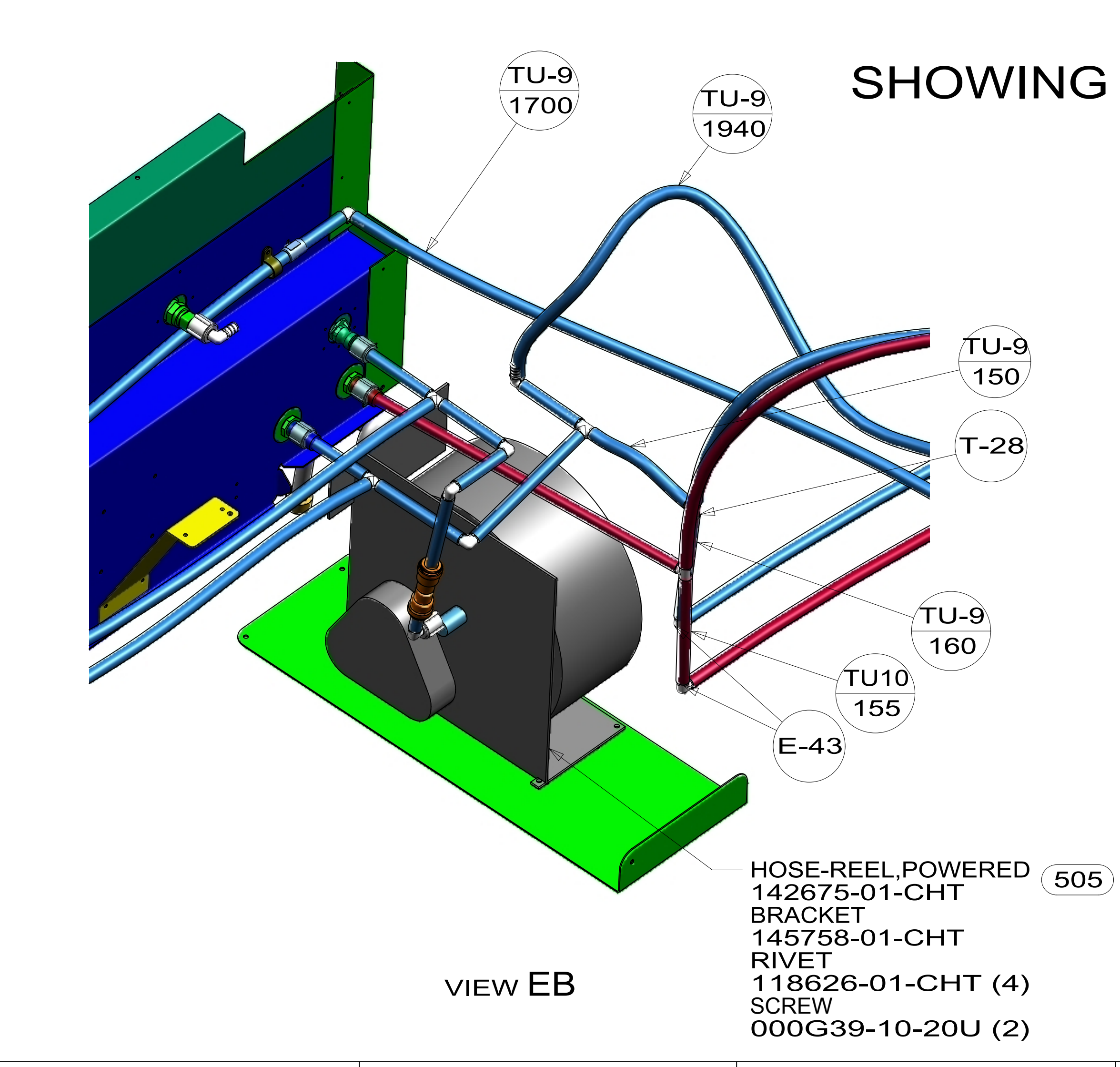
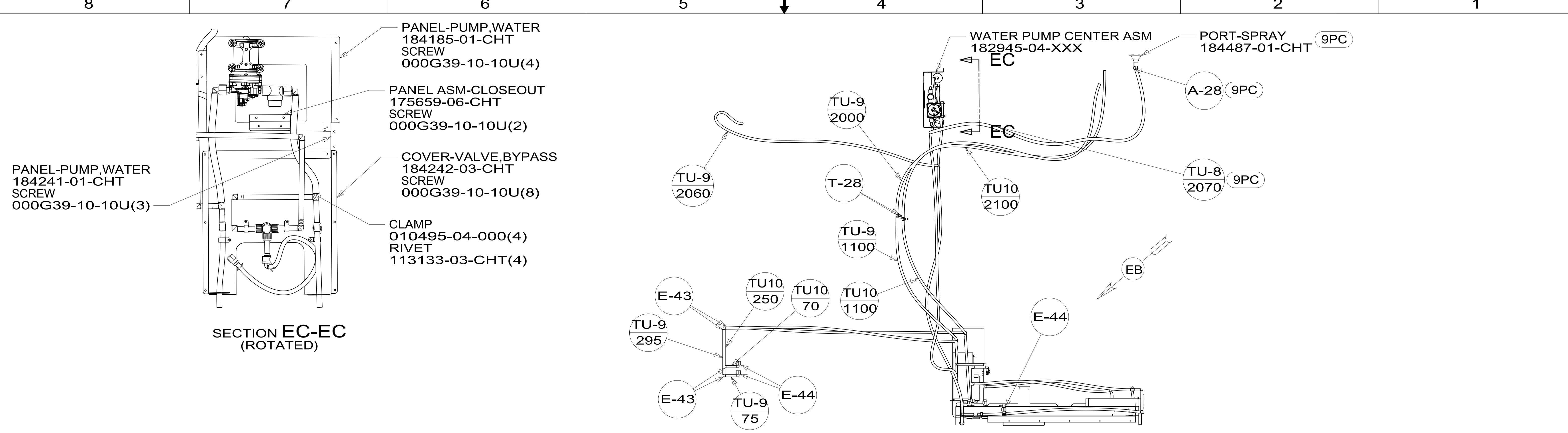
DETAIL DC

DETAIL DC

DESCRIPTION: WATER SYSTEM INSTL		
SHEET: 4 OF 5	ITEM/PART NO: 000116597 / 30015201000	REV

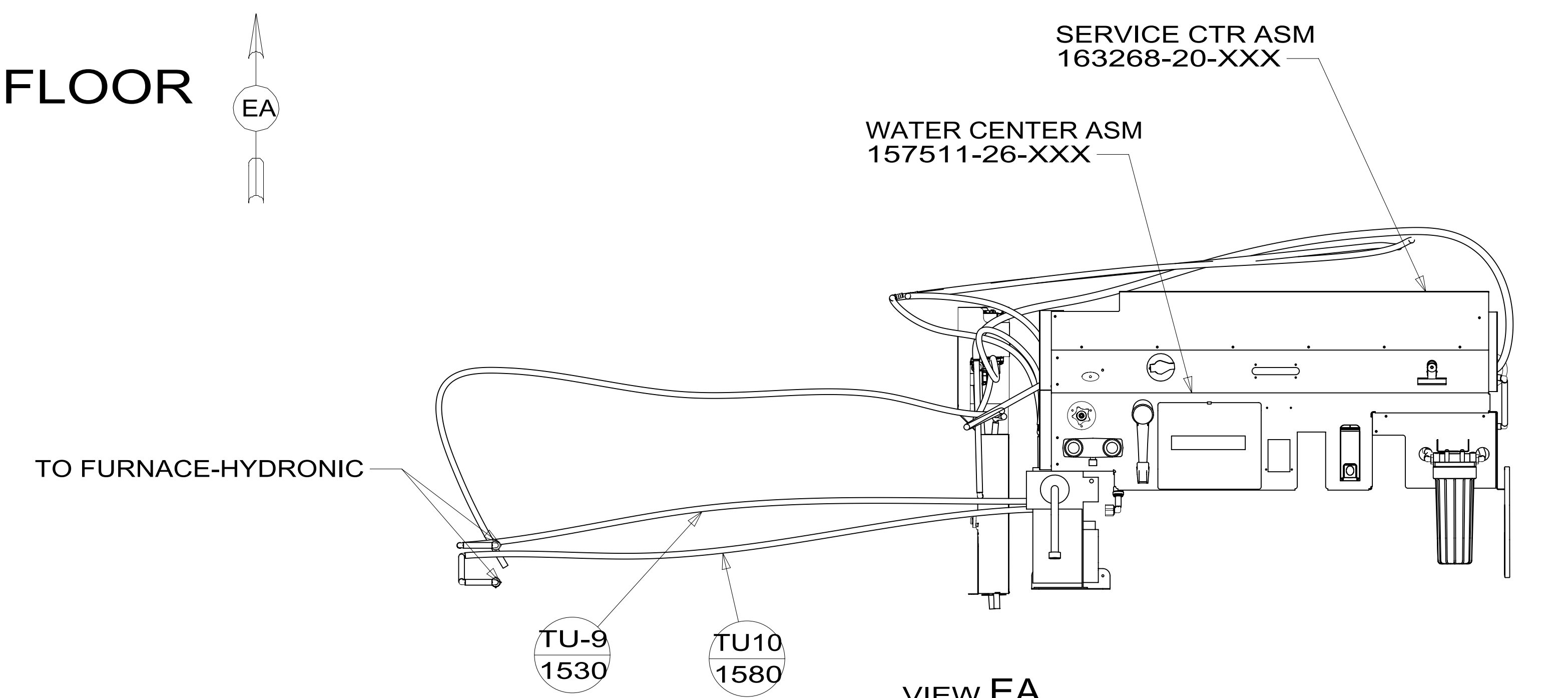
8 7 6 5 4 3 2 1 01-Feb-2017

\*300152 \*A



SECTION EC-EC  
(ROTATED)

SHOWING LINES UNDER FLOOR



VIEW EA

- PANEL-PUMP, WATER  
184185-01-CHT  
SCREW  
000G39-10-10U(4)
- PANEL ASM-CLOSEOUT  
175659-06-CHT  
SCREW  
000G39-10-10U(2)
- COVER-VALVE, BYPASS  
184242-03-CHT  
SCREW  
000G39-10-10U(8)
- CLAMP  
010495-04-000(4)  
RIVET  
113133-03-CHT(4)
- PANEL-PUMP, WATER  
184241-01-CHT  
SCREW  
000G39-10-10U(3)

- WATER PUMP CENTER ASM  
182945-04-XXX
- PORT-SPRAY  
184487-01-CHT (9PC)
- A-28 (9PC)
- TU-8  
2070 (9PC)

- HOSE-REEL, POWERED  
142675-01-CHT (505)
- BRACKET  
145758-01-CHT
- RIVET  
118626-01-CHT (4)
- SCREW  
000G39-10-20U (2)

DESCRIPTION:		
WATER SYSTEM INSTL		
SHEET:	ITEM/PART NO.:	REV
5 OF 5	000116597 / 30015201000	

\*300152\*