

- 7 FOR ADDITIONAL INFORMATION SEE DETAIL BA.
- 6 FOR CONNECTOR INSTALLATION SEE DETAIL BB.
- 5 CONNECT ONE GROUND WIRE TO GROUND BAR INSIDE DISTRIBUTION PANEL, CONNECT ONE GROUND WIRE TO DC GROUND BAR ON BACK SIDE OF DISTRIBUTION PANEL.
- 4 CONNECT BLACK WIRE FROM CONVENIENCE RECEPTACLE TO DEDICATED CIRCUIT BREAKER.
- 3 SEE WIRING INSTL-BODY, 12V FOR ADDITIONAL INFORMATION.
- 2 ATTACH TO UNUSED SCREW HOLE ON BACK SIDE OF PANEL TO SECURE WIRES.
1. ALL GROUND WIRES TO BE COVERED WITH TUBING 8041-02-000.
- NOTES:

		H25T
GROUND	8-G	136145-02-030
GENERATOR CABLE ASM	1B1	164957-01-050 33F
	265	164957-03-050 33F
THROW IN WIRE #1	1B1	-----
	265	-----
THROW IN WIRE #2	1B1	-----
	265	-----
THROW IN WIRE #3	1B1	136131-03-003 6 7
	265	136134-03-003 6 7
THROW IN WIRE #4	1B1	136131-19-005 6 7
	265	136134-19-005 6 7
MAIN CABLE ASM	1B1	164957-05-022
	265	164957-06-000
THROW IN WIRE #5	1B1	136131-19-215 6
	265	136134-19-215 6
RED	1B1	136135-07-044
	265	136136-07-044
YEL	1B1	136131-05-016
	265	136134-05-016
BLK	1B1	136135-06-012
	265	136136-06-012
BLU	1B1	136131-02-215
	265	136134-02-215
BLK-2	1B1	136135-22-052
	265	136136-22-052
WHT	1B1	136135-09-040
	265	136136-09-040
MAIN	1B1	136137-01-036
	265	136138-01-036
BRN	1B1	136131-03-027 6
	265	136134-03-027 6

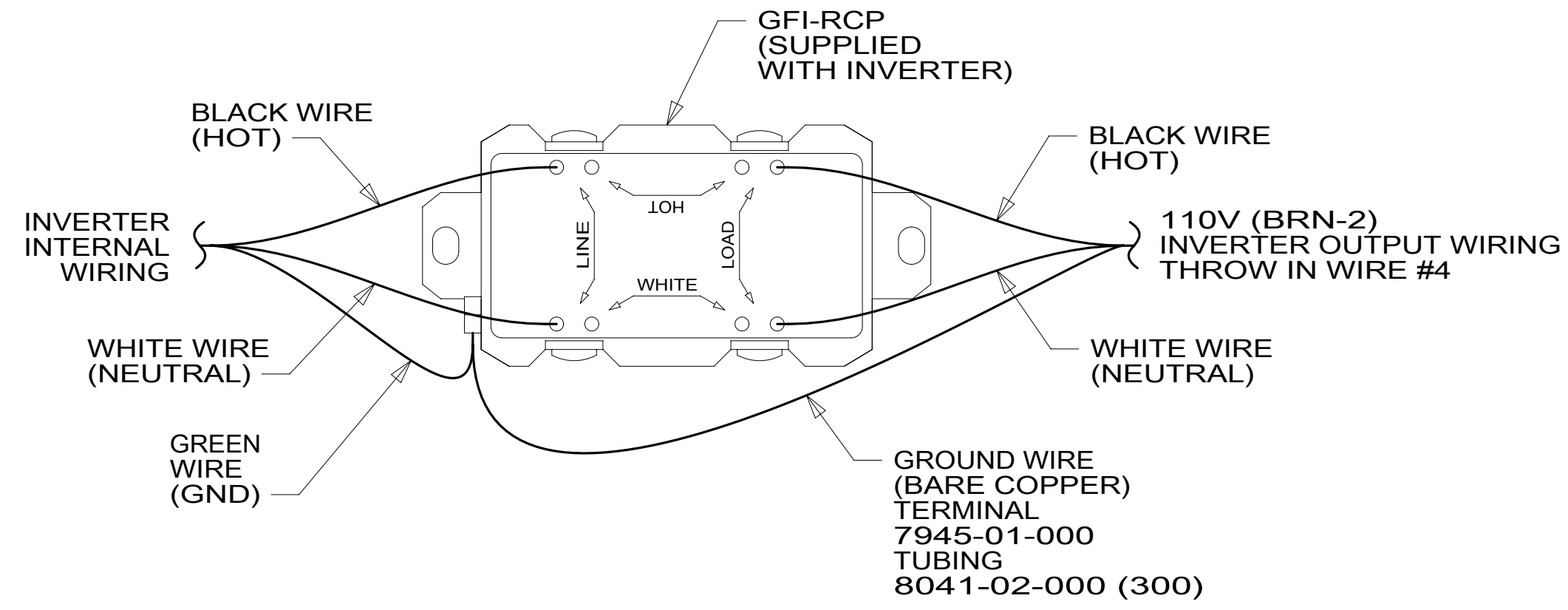
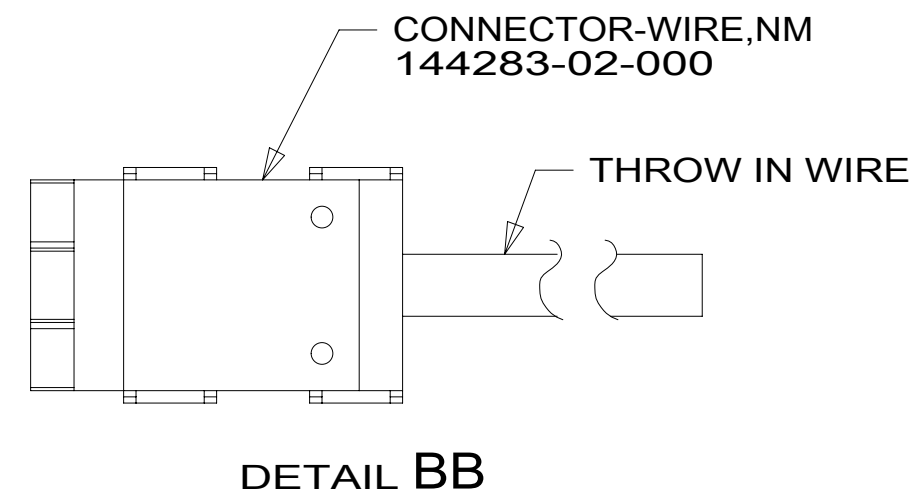
FOR ELECTRICAL TORQUE SPECIFICATIONS SEE DWG NO. 128783-01-000

FOR ELECTRICAL CALLOUTS SEE DWG NO. 121339-01-000

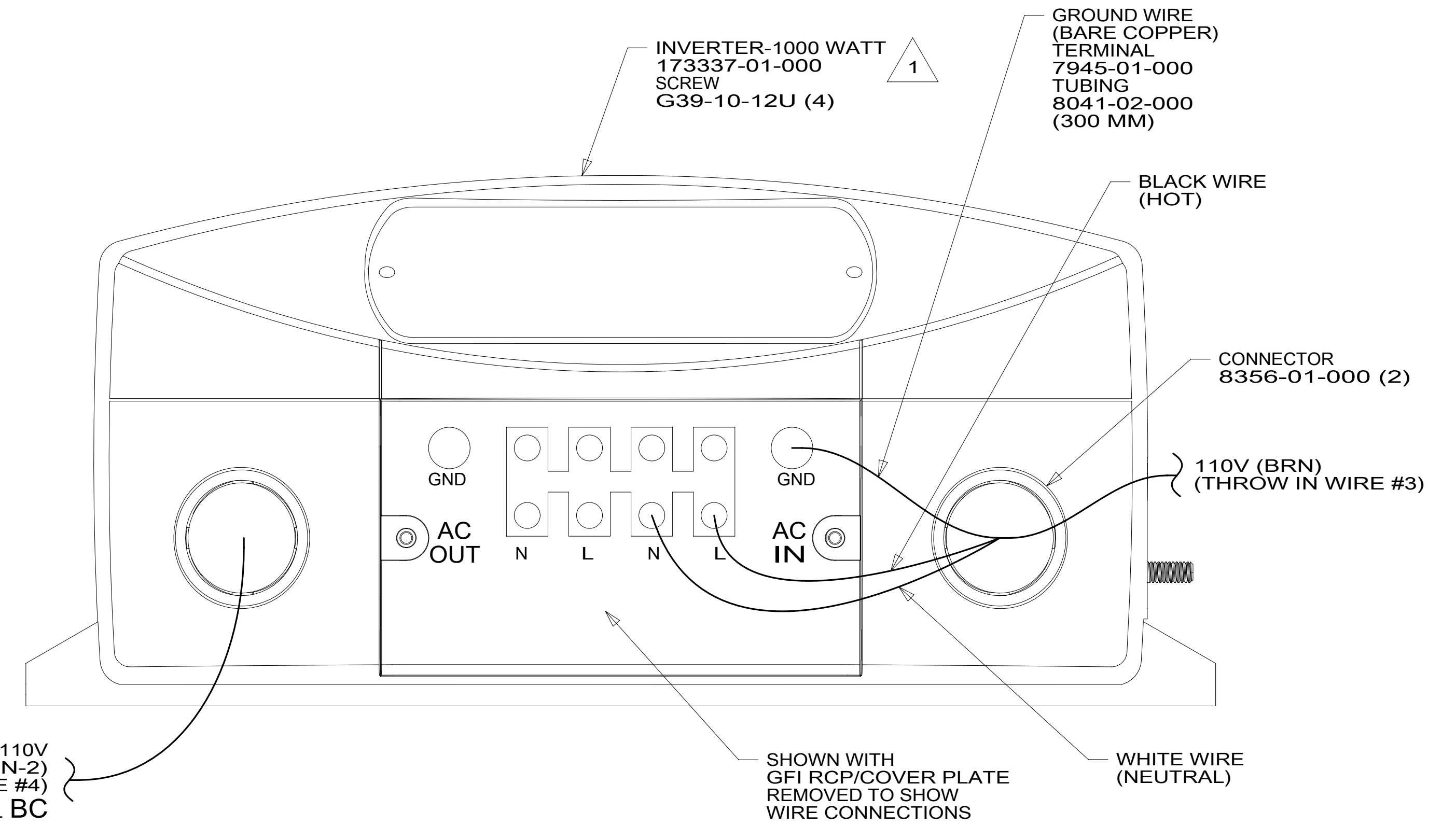
- 33F GEN-3.5 KW ONAN DIESEL
- 265 CODES/STANDARDS-CSA/CMVSS
- 1B1 CODES/STANDARDS USA

WINNEBAGO
COPYRIGHT 2016 WINNEBAGO INDUSTRIES, INC.

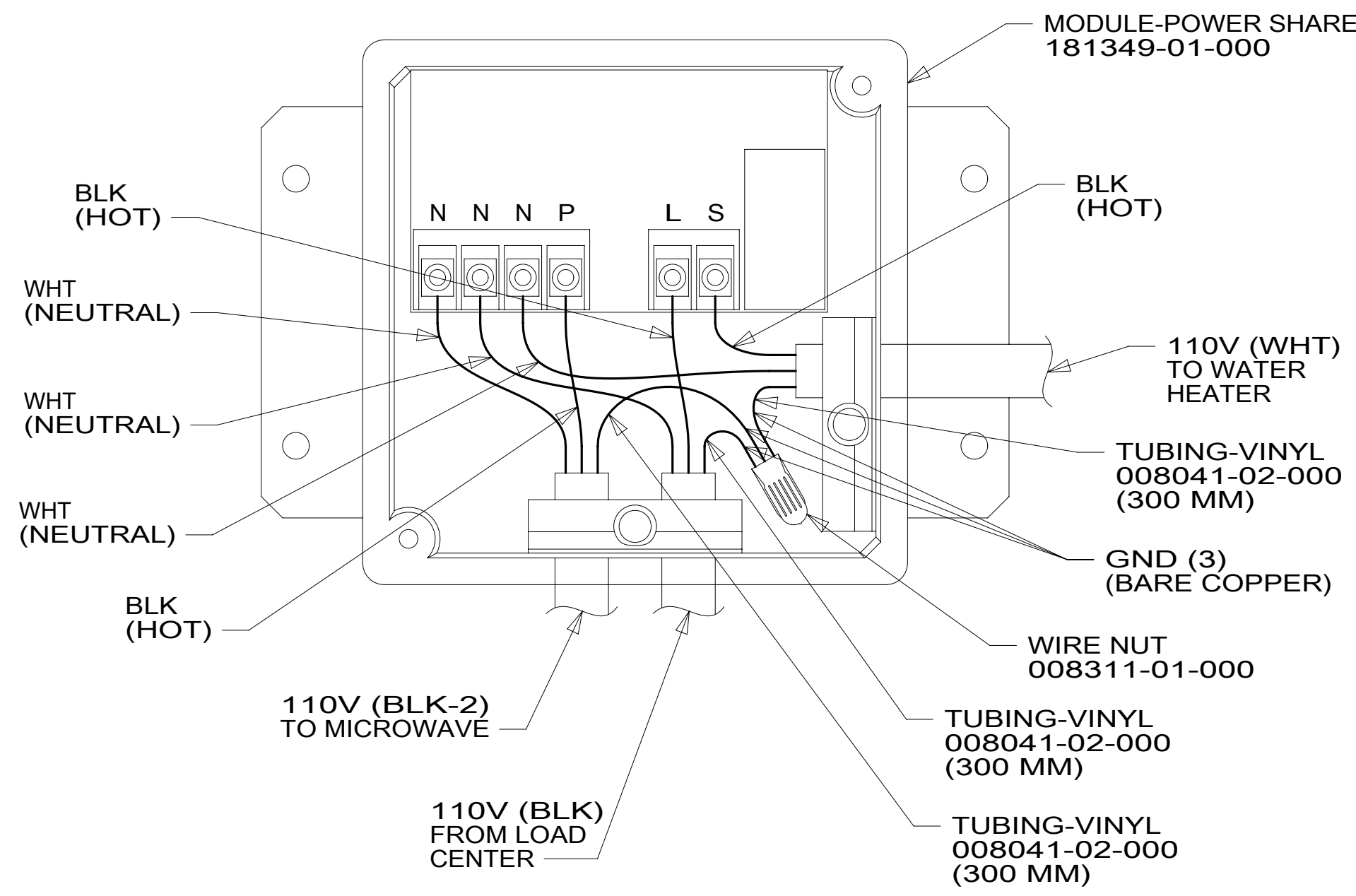
DSNR:	ALL DIMENSIONS ARE IN MILLIMETERS
DFFR:	MATERIAL:
UNSPECIFIED TOLERANCES:	
WHOLE DIM (X) :	3
ONE-PLACE (X.X) :	1.5
TWO-PLACE (X.XX) :	0.50
ANGLE :	1°
REFER TO ES0018 FOR FASTENER TIGHTENING GUIDELINES	WEIGHT: (LBS) FIRST USED:
DESCRIPTION: LOAD CENTER/ATS ASM	
SHEET: 1 OF 3	ITEM/PART NO: 000008483 / 31077501000
REF:	1 19-Sep-2016



DETAIL BC



DETAIL BA



1 INVERTER SUPPLIED WITH REMOTE PANEL.
SEND PANEL TO MANUFACTURING LINE.

NOTES:

FOR ELECTRICAL
TORQUE
SPECIFICATIONS
SEE DWG NO.
128783-01-000

FOR ELECTRICAL
CALLOUTS
SEE DWG NO.
121339-01-000

265 CODES/STANDARDS-CSA/CMVSS

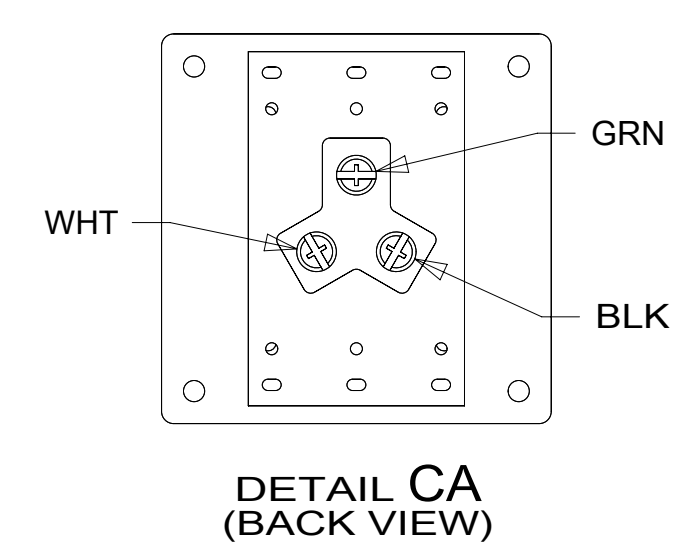
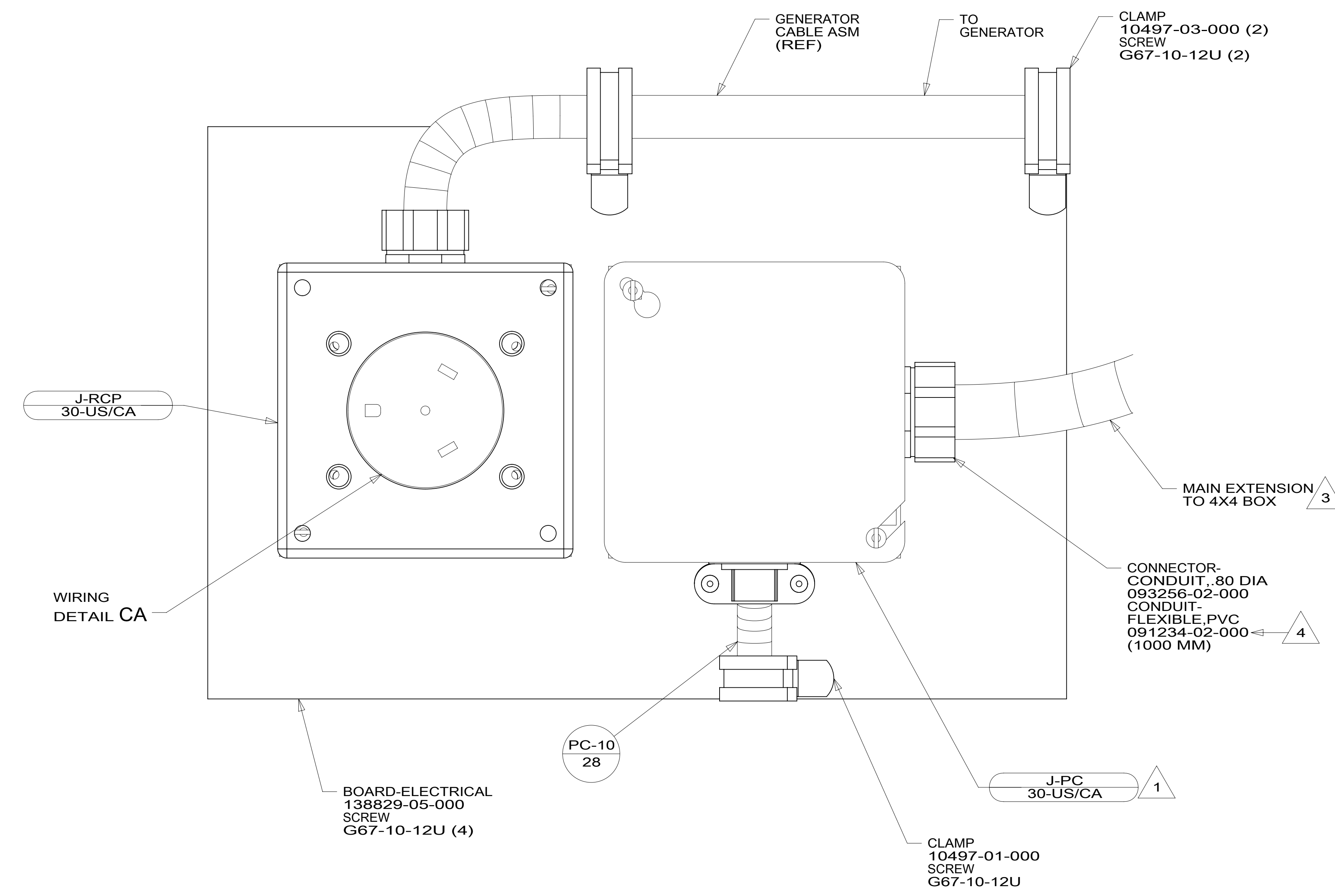
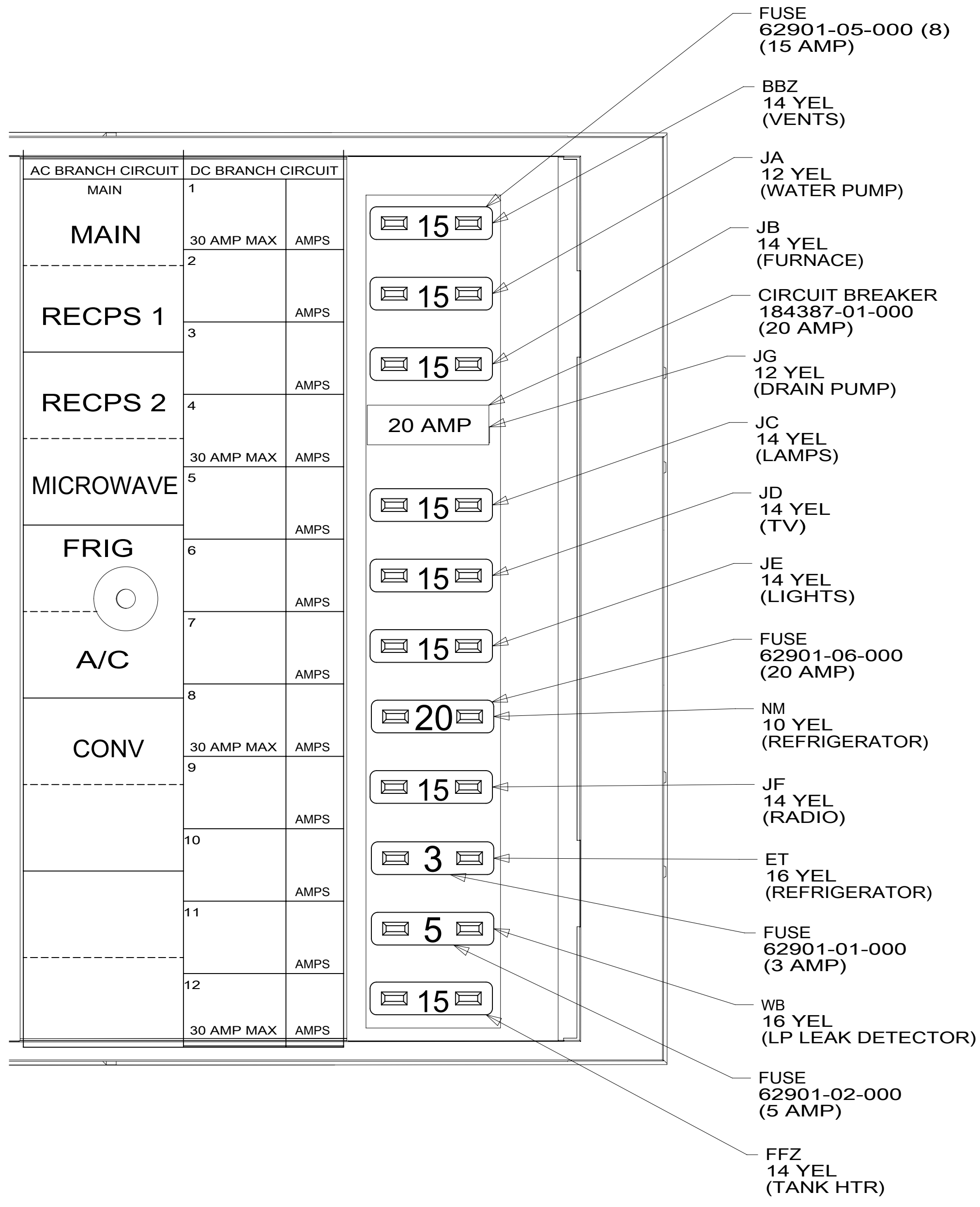
1B1 CODES/STANDARDS USA

1B1 265

DESCRIPTION:
LOAD CENTER/ATS ASM

SHEET: 2 OF 3 ITEM/PART NO: 000008483 / 31077501000 REV

19-Sep-2016



- NOTES:
- 4 SECURE CONDUIT TO POWER CORD WITH TAPE 8363-01-000 FOR TRANSPORTATION PURPOSES.
 - 3 MAIN EXTENSION TO BE CONNECTED TO 4X4 BOX AS SHOWN IN SUB-ASSEMBLY AREA.
 - 2 WIRES CONNECTED TO 4X4 BOX ON ASSEMBLY LINE ONCE PARTS ARE INSTALLED.
 - 1 CONNECT BLK TO BLK, WHT TO WHT, AND GRNDS TO GRNDS.

FOR ELECTRICAL TORQUE SPECIFICATIONS SEE DWG NO. 128783-01-000
 FOR ELECTRICAL CALLOUTS SEE DWG NO. 121339-01-000

265	CODES/STANDARDS-CSA/CMVSS
1B1	CODES/STANDARDS USA
1B1	265
DESCRIPTION: LOAD CENTER/ATS ASM	
SHEET: 3 OF 3	ITEM/PART NO: 000008483 / 31077501000
REV 19-Sep-2016	