

36C MOBILEYE 560  
191160-03-000  
(DETAIL JA)

12 CABLE-MONITOR  
180731-02-000

14 70C RECEIVER-SATELLITE RADIO  
181908-05-000

6 TAPE  
(400 MM)

GA

WIRING TO OUTSIDE

WIRE ASM-IP,MAIN  
194051-01-000

SWITCHES  
DETAIL DB

6 & 2 PIN HOUSING  
TO LEFT MIRROR

10 CABLE-MONITOR  
180731-03-000

15 SWITCH-  
GENERATOR SLIDE  
108357-06-000  
ACTUATOR  
108356-01-000

BRACKET-RELAY PANEL  
145448-01-CHT  
SCREW  
G67-10-08U (4)

CB

12V BREAKER PANEL  
DETAIL CA

DOOR ASM  
145066-03-CHT  
SCREW  
G67-06-10U (6)  
SCREW  
G67-10-08U (4)

AMPLIFIER  
193630-02-000  
SCREW  
G39-10-08U (4)  
WIRE ASM-AMP  
194217-01-000  
194217-02-000  
194217-03-000

571 SPEAKER  
171547-01-CHT (2)  
SCREW  
G11-08-20U (8)  
57P SPEAKER  
193632-01-000 (3)  
SCREW  
G11-08-20U (12)

(6) BUTT SPLICES  
TO SUNVISOR  
HHK-BLK  
HHL-BLK/GRY  
HHM-BLK  
HHN-BLK/GRY  
JJX-BRN (2)

6 PIN HOUSING  
TO WIRE ASM-ROOF

TO REAR CAMERA  
DETAIL AA 13

CABLE-MONITOR  
180731-03-000 10 9

LIGHT-READING,LED,FLEX  
174060-01-CHT (2)  
CONNECTOR  
58028-01-000 (4)

NUT  
D29-04-00U (2)

WASHER  
E13-14-00U (2)

BRACKET-MOUNT,  
CAMERA  
152022-05-CHT

SCREW  
G39-10-12B (EXT) (4)

CAMERA BRACKET 7

MOUNTS TO  
PANEL ASM-REAR CAP

CAMERA  
176654-17-CHT 8

TO DOOR  
CONTACT PLATE  
DETAIL AB

BA

DETAIL EB

DA RADIO ANTENNA WIRE 3 5

WIRE ASM-  
OVHD,FRONT  
194216-01-000

GROMMET  
071015-45-000

PANEL ASM  
145063-09-CHT  
SCREW  
G67-06-10U (6)

BOX ASM-SPEAKER  
194151-01-XXX  
SCREW  
G11-10-16U (4)  
SPEAKER-8"  
193633-01-000  
WIRE ASM-PIGTAIL,  
SUBWOOFER  
193633-04-000  
SCREW  
G11-10-12U (4)  
GRILL  
193633-03-000  
PLATE-SPEAKER  
194221-01-000 (2)  
SCREW  
G11-08-08U (8)  
SEAL  
185989-01-CHT  
(360 MM)(2)  
SCREW  
G11-10-12U (4)

57P

FOR ELECTRICAL  
TORQUE  
SPECIFICATIONS  
SEE DWG NO.  
128783-01-000

FOR ELECTRICAL  
CALLOUTS  
SEE DWG NO.  
121339-01-000

- NOTES:
- SEE WIRING INSTL-CHASSIS FOR ADDITIONAL INFORMATION.
  - USE SEAL-TRIM 113452-01-000 TO PROTECT WIRES FROM SHARP EDGES.
  - CABLE SUPPLIED WITH SATELLITE RADIO RECEIVER. PLUG INTO BACK OF RADIO & TIE TO IP,MAIN. ROUTE UP A-POST WITH RADIO ANTENNA WIRE.
  - APPLY FOAM TAPE TO BOTTOM OF FAN TO SEAL FAN TO PANEL.
  - SEE ANTENNA INST-RADIO & CB FOR ADDITIONAL INFO.
  - USE TAPE 8363-03-000 TO SECURE WIRES IN A-POST.
  - PARTS SUPPLIED WITH REAR CAMERA.
  - ALIGN CAMERA IN CENTER OF SHROUD OPENING AND ADJUST SO BACKWALL IS JUST VISIBLE.
  - ROUTE CABLE TO EXTERIOR THRU HOLE IN PANEL ALONG WITH HEATER WIRING TO RIGHT CAMERA.
  - ROUTE CABLE TO EXTERIOR MIRRORS. CAMERA IS IN MIRROR.
  - RADIO - SATELLITE
  - ROUTE UP A-POST TO RUN THRU ROOF.
  - RUN CABLE THRU LEFT HAND COVE TO FRONT OF UNIT AND DOWN LEFT A-POST TO MONITOR.
  - WIRE TIE SAT TUNER TO DASH RADIO WIRING.
  - SWITCH MOUNTS IN GENERATOR TRAY RELEASE HANDLE. SEE GENERATOR INSTL FOR ADDITIONAL INFORMATION.

- 571 RADIO SPEAKERS
- 57P RADIO SPEAKERS-PREMIUM SOUND
- 36C COLLISION AVOIDANCE SYSTEM
- 70C RADIO - SATELLITE
- 265 CODES/STANDARDS-CSA/CMVSS
- 1B1 CODES/STANDARDS USA

<b>WINNEBAGO</b> COPYRIGHT 2016 WINNEBAGO INDUSTRIES, INC.	
DSNR:	ALL DIMENSIONS ARE IN MILLIMETERS
DFFR:	
UNSPECIFIED TOLERANCES:	MATERIAL:
WHOLE DIM (X) : 3	
ONE-PLACE (X.X) : 1.5	
TWO-PLACE (X.XX) : 0.50	
ANGLE : 1°	
REFER TO ES0018 FOR FASTENER TIGHTENING GUIDELINES	WEIGHT: (LBS) FIRST USED:
<b>DESCRIPTION:</b> WIRING INSTL-FRONT END	
SHEET: 1 OF 9	ITEM/PART NO: 00002747 / 31019701000
REF:	1 19-Sep-2016

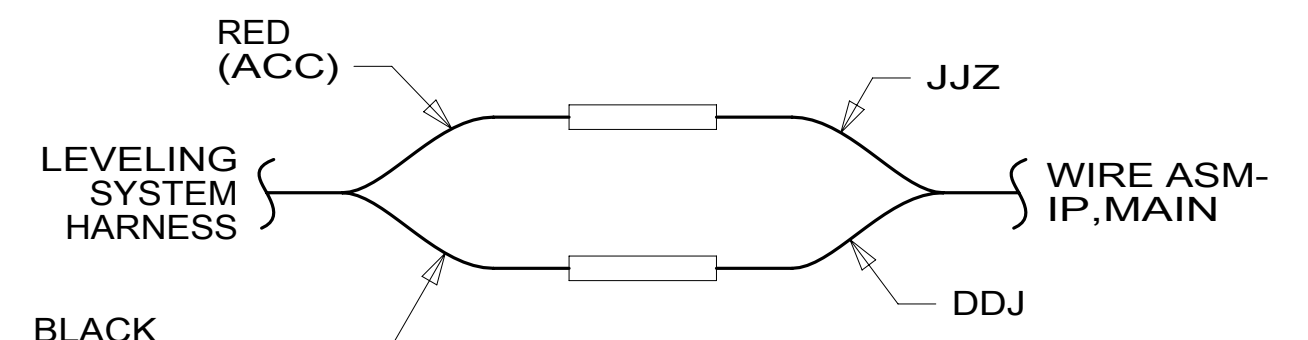
8 7 6 5 4 3 2 1

WIRE ASM-IP,MAIN

LABEL-CB PREP OPTION  
104678-01-000

FUSE-5 AMP  
062901-02-000

(2) BUTT SPLICES  
TO CB PREP  
DETAIL BB



DETAIL BC

CB POWER PROVISION  
YELLOW +12V  
WHITE GROUND  
COAX ANTENNA  
(SEE REVERSE SIDE ALSO)

WHT YEL  
TO CUSTOMERS  
CB RADIO

BUTT SPLICES (2)  
TO LEVELING  
SYSTEM  
DETAIL BC

RING TERMINALS  
TO GROUND STUD

ALARM-JACKS DOWN  
160876-01-000

2 PIN HOUSING  
(2) BUTT SPLICES

2 PIN HOUSINGS  
TO HEATER/AC CONTROLS

DETAIL BB 579

RADIO WIRING

TO SWITCHES  
DETAIL DB

(2) SPADE TERINALS  
TO LEFT SUBWOOFER

WIRE ASM-OVHD  
ROUTES UP B-POST COVER

DIAGNOSTIC CONNECTOR  
(CHASSIS SUPPLIED)  
SCREW  
G39-06-06B (4)

RADIO ANTENNA CABLE  
& SAT RADIO WIRING ONLY

GROMMET  
23942-01-000  
FOAM  
110744-03-000 (A/R)

DETAIL BA

- 579 RADIO - CB WIRE PREP
- 265 CODES/STANDARDS-CSA/CMVSS
- 1B1 CODES/STANDARDS USA

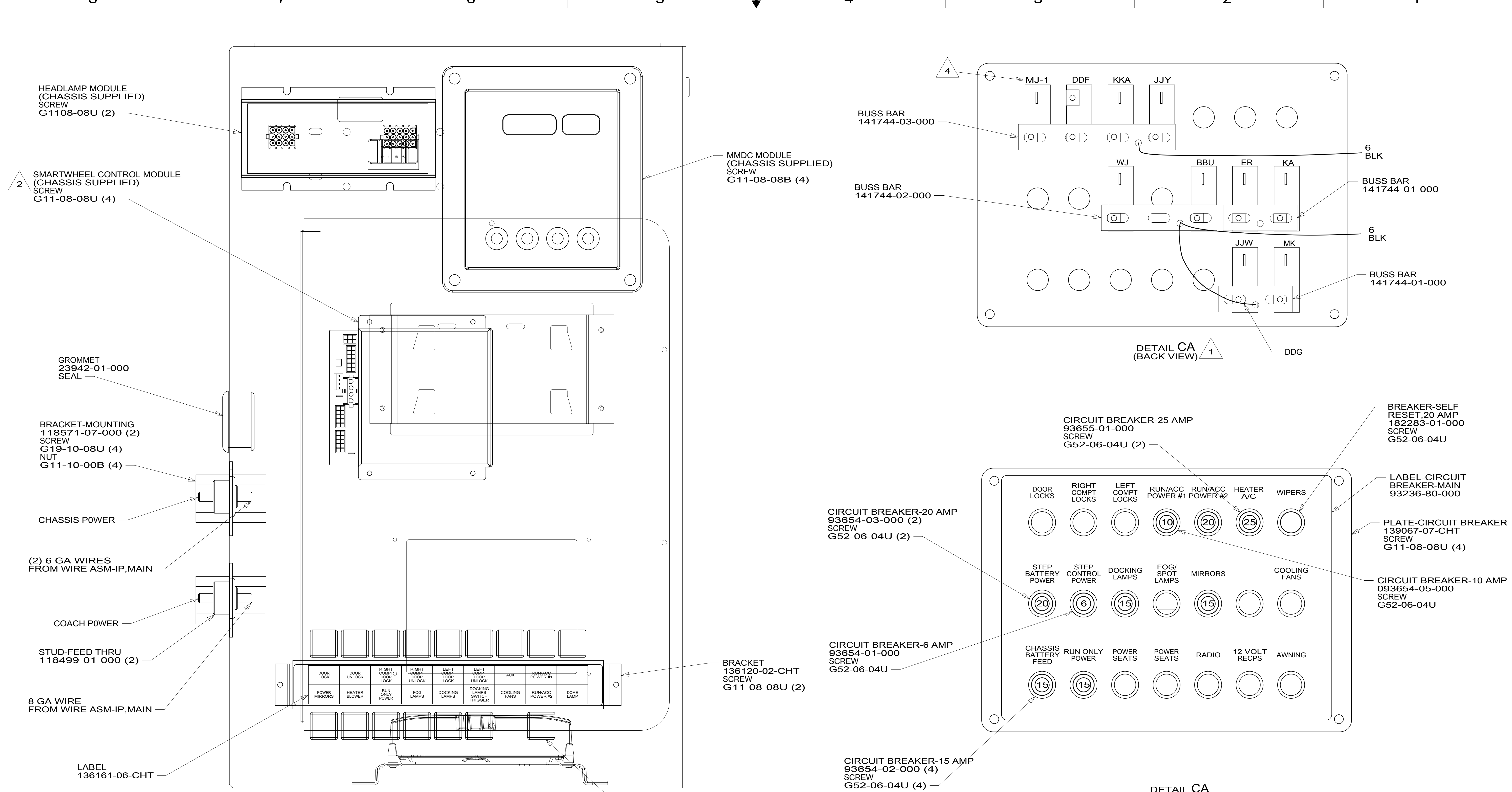
2 EDGE OF LABEL TO HANG JUST BELOW BOTTOM OF DASH.  
1 ROUTE WIRES UP LEFT A-PILLAR.

FOR ELECTRICAL  
TORQUE  
SPECIFICATIONS  
SEE DWG NO.  
128783-01-000

FOR ELECTRICAL  
CALLOUTS  
SEE DWG NO.  
121339-01-000

DESCRIPTION: <b>WIRING INSTL-FRONT END</b>		
SHEET: 2 OF 9	ITEM/PART NO: 000002747 / 31019701000	REV
19-Sep-2016		

8 7 6 5 4 3 2 1

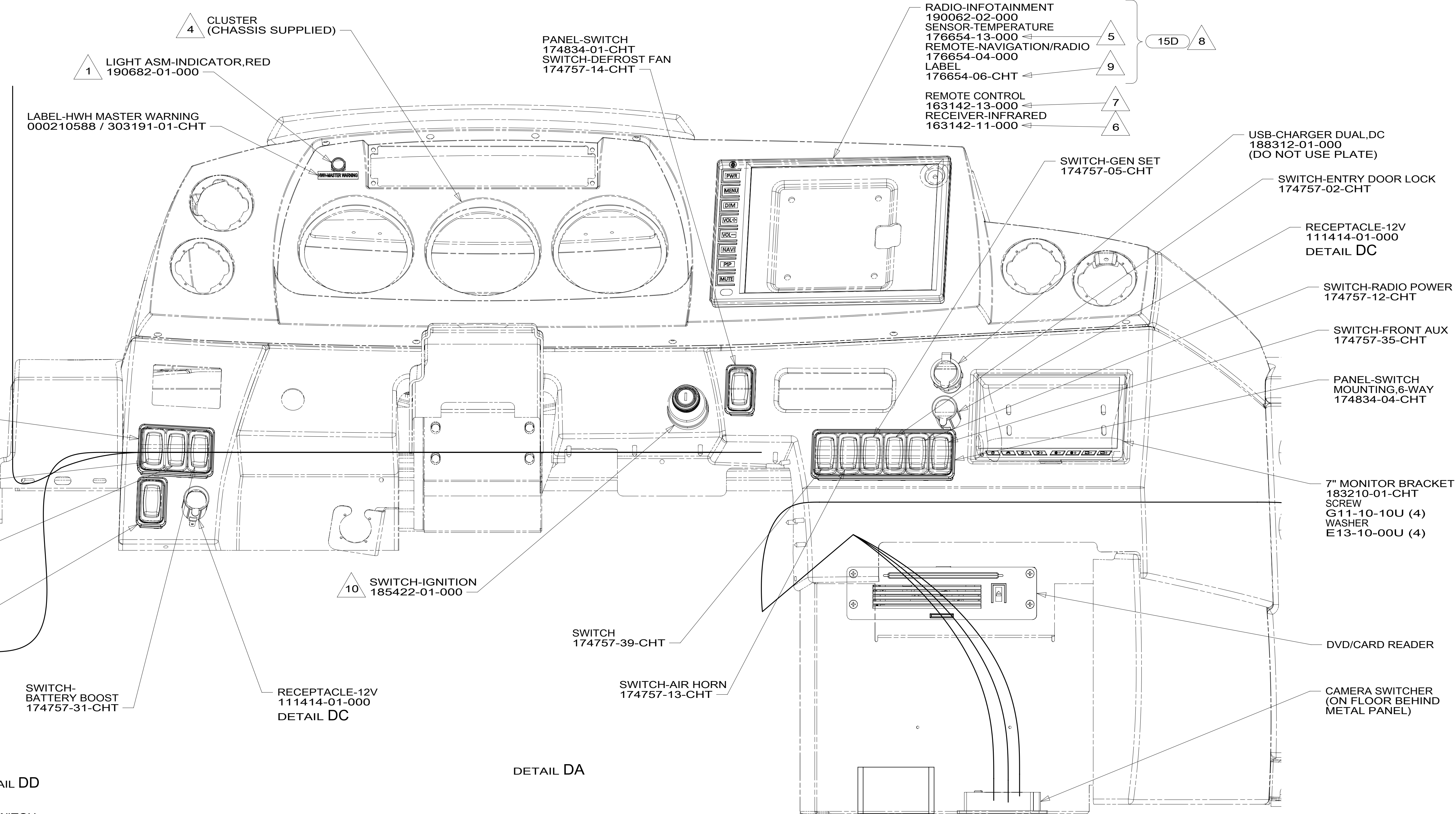
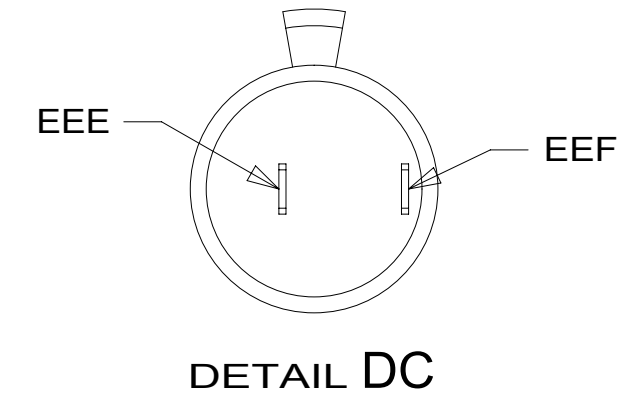


- NOTES:**
- 4 FROM WIRE ASM-WIPER.
  - 3 SEAL ALL SCREWS ON EXTERIOR SIDE OF COMPARTMENT. REFER TO SEALANT MANUAL.
  - 2 CHASSIS SUPPLIED LOOM IS LABELED TO CORRESPOND WITH LABEL ON MODULE.
  - 1 CIRCUITS LABELED ON BREAKER ARE FROM WIRE ASM-IP, MAIN, UNLESS OTHERWISE SPECIFIED.

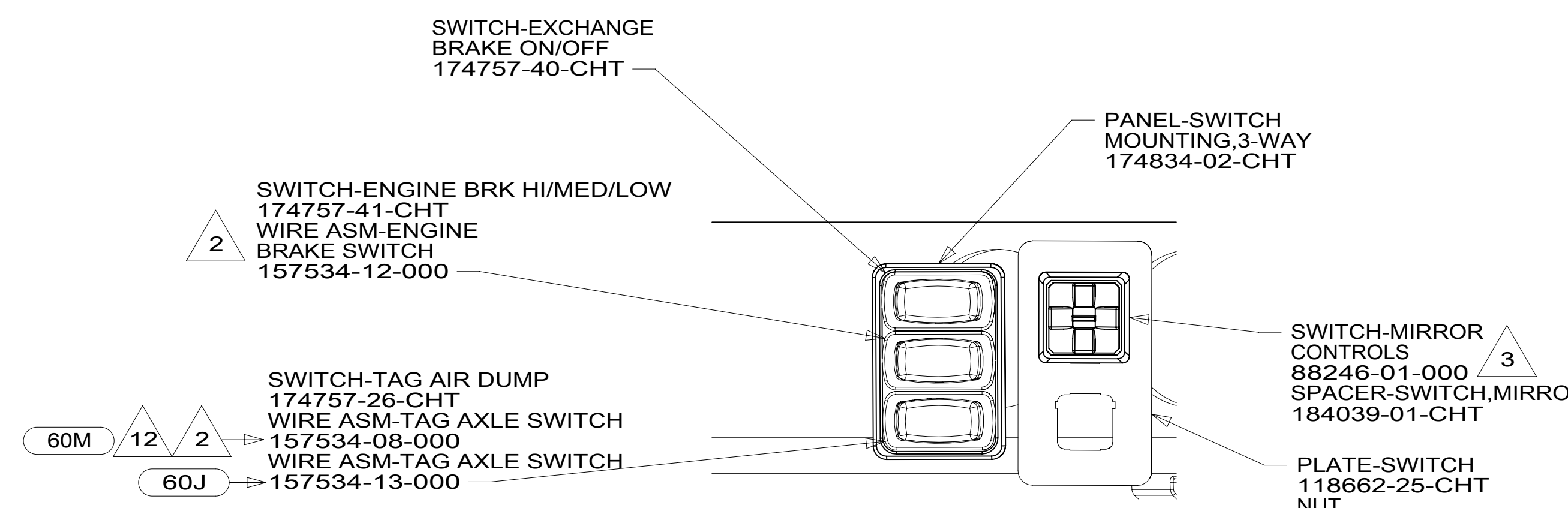
FOR ELECTRICAL TORQUE SPECIFICATIONS SEE DWG NO. 128783-01-000

FOR ELECTRICAL CALLOUTS SEE DWG NO. 121339-01-000

265	CODES/STANDARDS-CSA/CMVSS
1B1	CODES/STANDARDS USA
1B1	265
DESCRIPTION: <b>WIRING INSTL-FRONT END</b>	
SHEET: 3 OF 9	ITEM/PART NO: 000002747 / 31019701000
REV 19-Sep-2016	



- NOTES:
- 12 NOT USED WITH 60J
  - 11 CHASSIS SUPPLIED ROCKER SWITCHES. DOME LAMP SWITCH NOT USED. SEE DETAIL DD FOR SWITCH POSITION.
  - 10 REPLACE CHASSIS SUPPLIED IGNITION SWITCH.
  - 9 APPLY LABEL OVER "WB" BUTTON. SEE DETAIL FC.
  - 8 MOUNT GPS ANTENNA ON TOP OF DEFROST PLENUM.
  - 7 TO BE SUPPLIED LOOSE IN WINNEBAGO OWNERS CASE.
  - 6 INSTALL PER DRAWING 170205.
  - 5 ROUTE TEMP SENSOR THRU HOLE IN BULKHEAD TO BRACKET (SEE SHT 7).
  - 4 SEE DETAIL EA FOR GAUGE PLACEMENT.
  - 3 MOUNT SWITCH SO WHEN ACTUATOR IS PUSHED LEFT, THE LETTER L IS SHOWING.
  - 2 CONNECT TO MATING LABELED CONNECTOR ON CHASSIS SUPPLIED WIRING.
  - 1 CONNECT POSITIVE WIRE TO TERMINAL MARKED WITH A "RED", YEL-WINNEBAGO WIRING



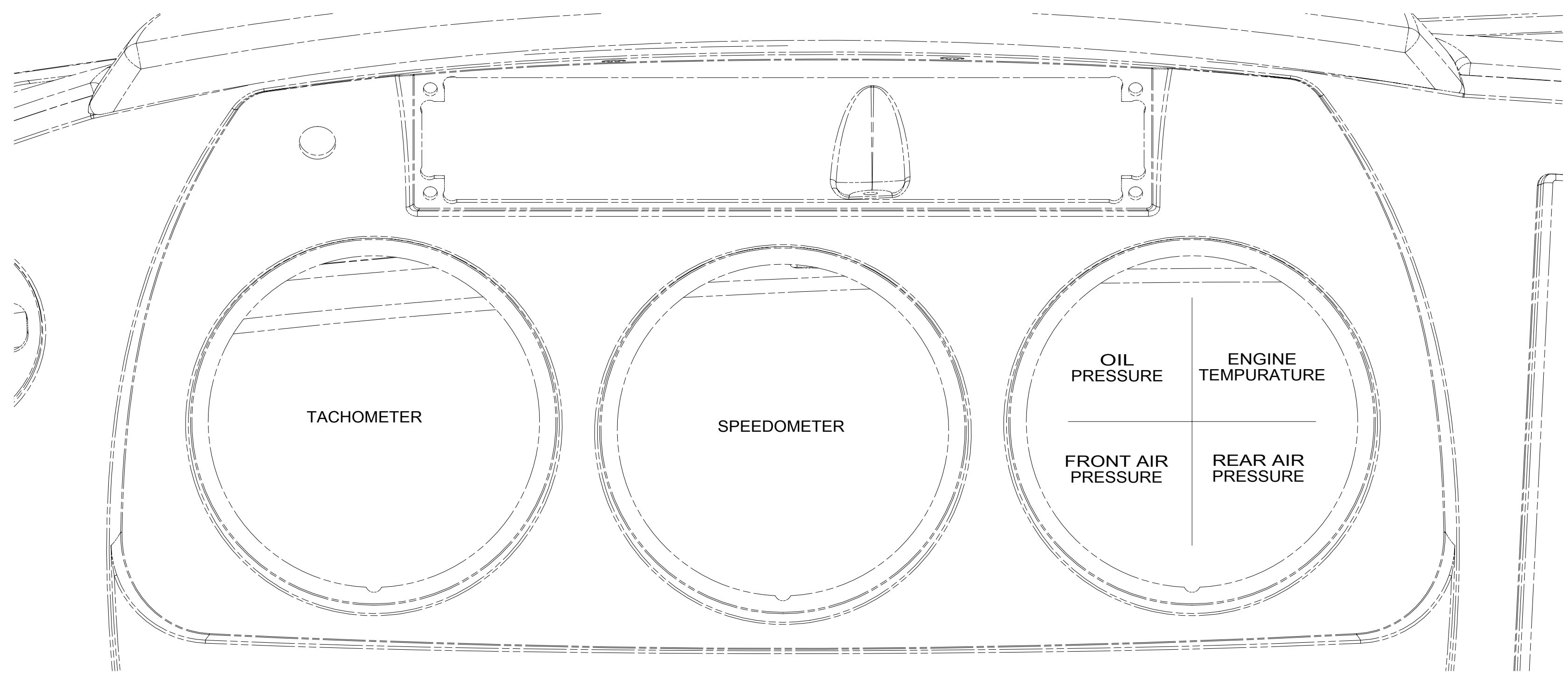
FOR ELECTRICAL TORQUE SPECIFICATIONS SEE DWG NO. 128783-01-000

FOR ELECTRICAL CALLOUTS SEE DWG NO. 121339-01-000

- 60J AIR LEVELING - SUSPENSION
- 60M HYDRAULIC LEVEL JACKS-AUTO
- 15D INFOTAINMENT CENTER/GPS
- 265 CODES/STANDARDS-CSA/CMVSS
- 1B1 CODES/STANDARDS USA

DESCRIPTION:		1B1 265	
<b>WIRING INSTL-FRONT END</b>			
SHEET:	ITEM/PART NO.:	REV	
4 OF 9	000002747 / 31019701000		

8 7 6 5 4 3 2 1

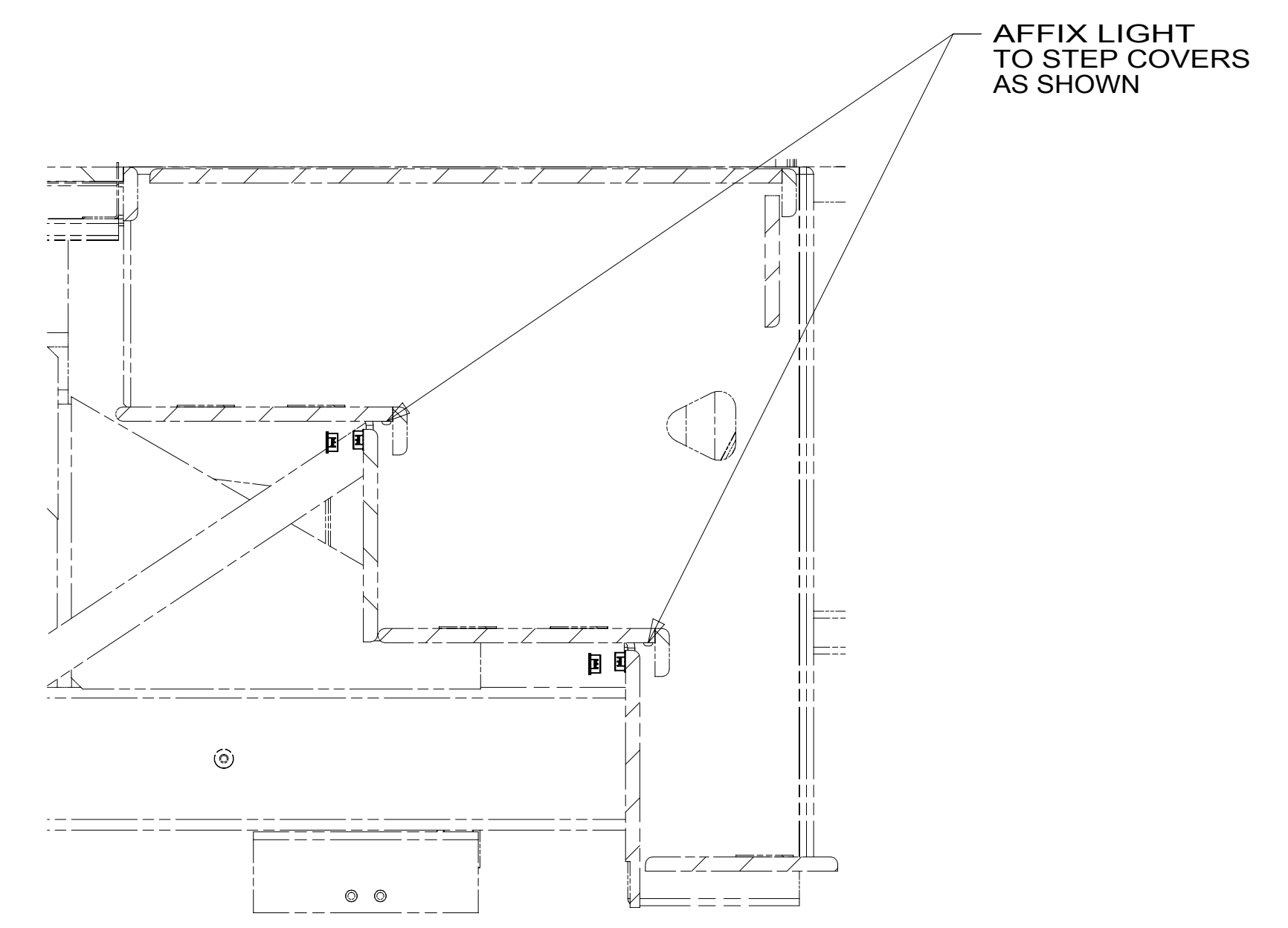


TACHOMETER

SPEEDOMETER

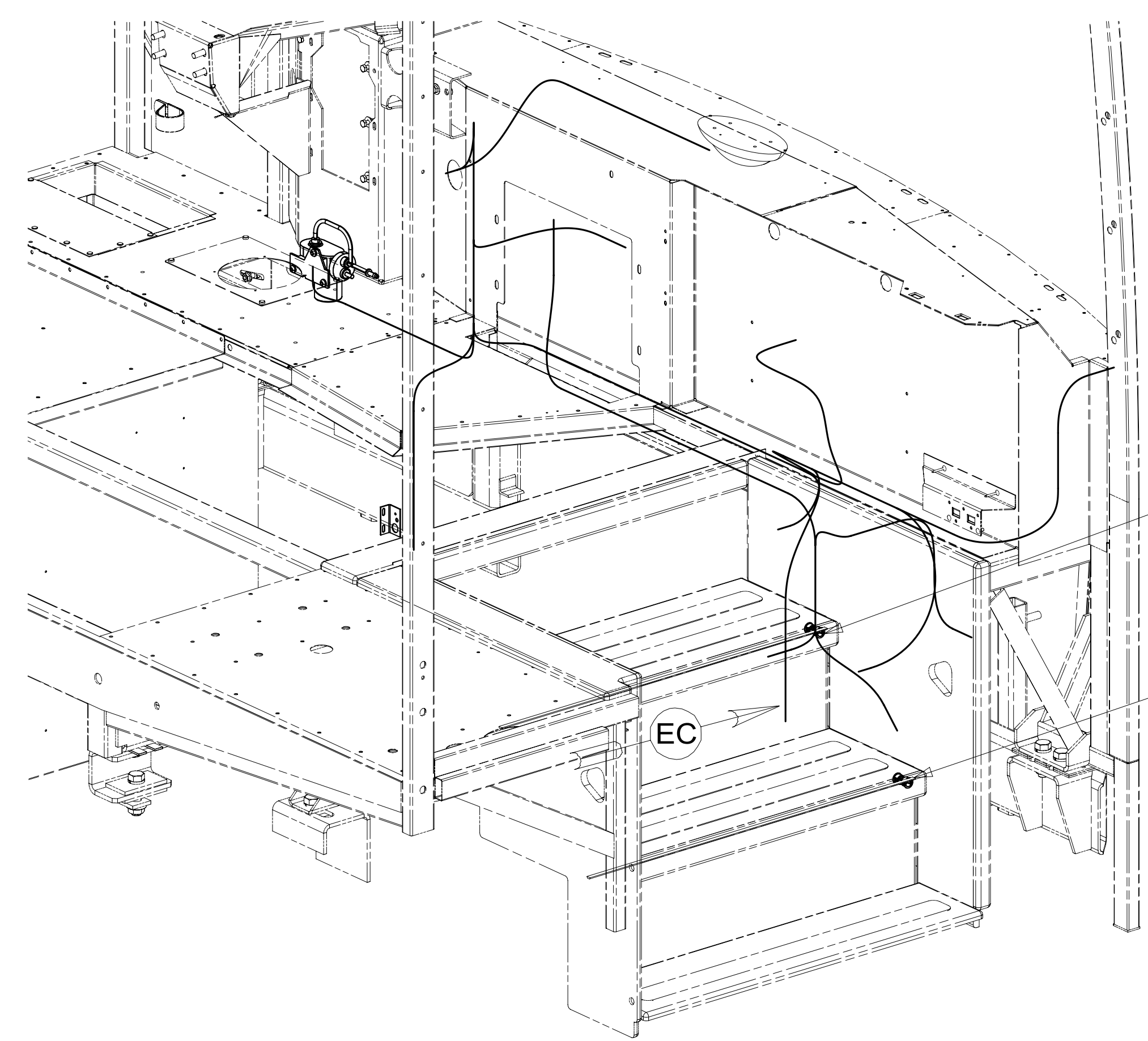
OIL PRESSURE  
ENGINE TEMPERATURE  
FRONT AIR PRESSURE  
REAR AIR PRESSURE

DETAIL EA 1



AFFIX LIGHT TO STEP COVERS AS SHOWN

VIEW EC



GROMMET 114208-02-000 (4)

LIGHT-TAPE,LED 187693-14-CHT (2)

EC

DETAIL EB

1 ALL STANDARD GAUGES, RETAINER CLIPS AND FASTENERS ARE CHASSIS SUPPLIED.

NOTES:

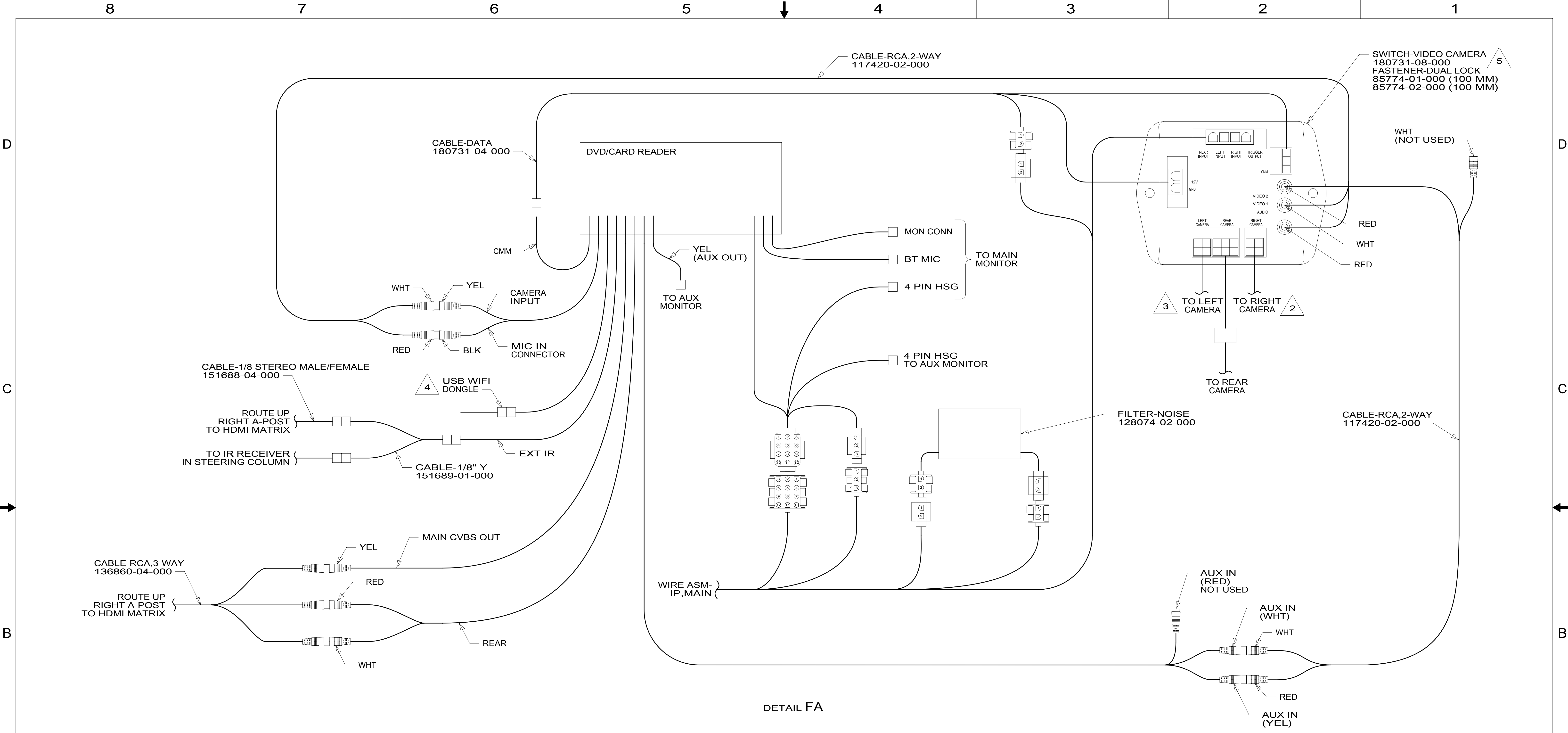
FOR ELECTRICAL TORQUE SPECIFICATIONS SEE DWG NO. 128783-01-000

FOR ELECTRICAL CALLOUTS SEE DWG NO. 121339-01-000

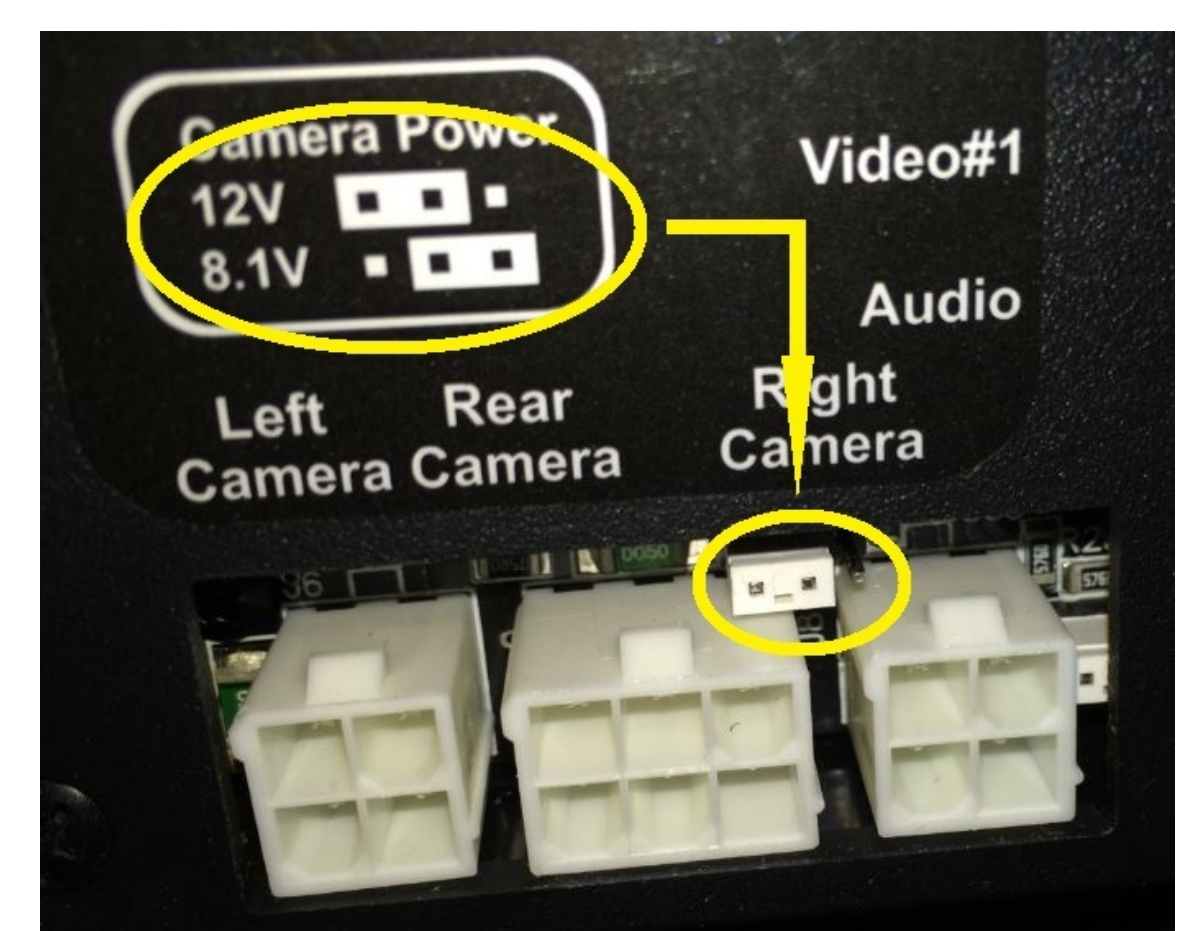
265 CODES/STANDARDS-CSA/CMVSS  
1B1 CODES/STANDARDS USA

DESCRIPTION:	
1B1 265 WIRING INSTL-FRONT END	
SHEET:	ITEM/PART NO:
5 OF 9	000002747 / 31019701000
REV	

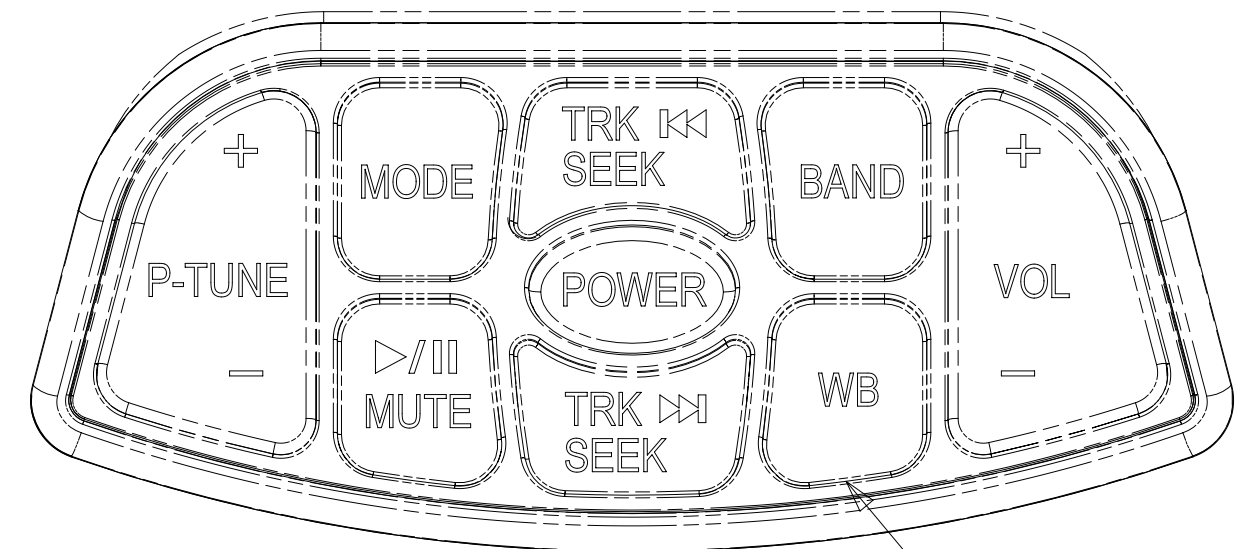
8 7 6 5 4 3 2 1 19-Sep-2016



DETAIL FA



DETAIL FB



DETAIL FC

- NOTES:
- 5 ENSURE CAMERA POWER JUMPER IS IN 12 VOLT POSITION. MOVE TO 12V POSITION IF NECESSARY. SEE DETAIL FB.
  - 4 SUPPLIED WITH RADIO.
  - 3 MARK LEFT CABLE WITH YELLOW TAPE 900000-07-000 NEXT TO CONNECTOR.
  - 2 MARK RIGHT CABLE WITH WHITE TAPE 900000-08-000 NEXT TO CONNECTOR.
  - 1. APPLY TAPE 8363-01-000 AS NECESSARY TO SECURE NON-LOCKING CONNECTIONS.

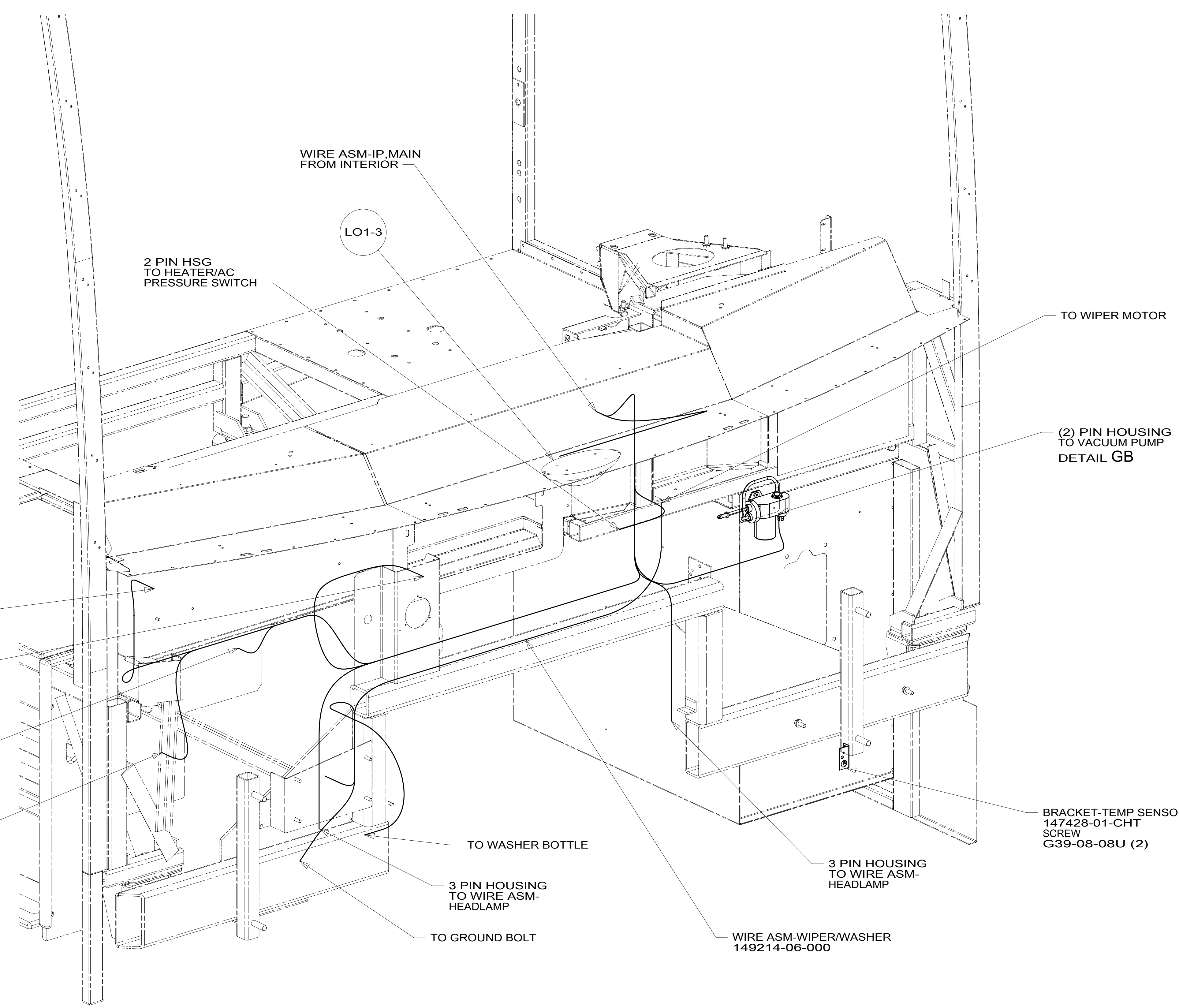
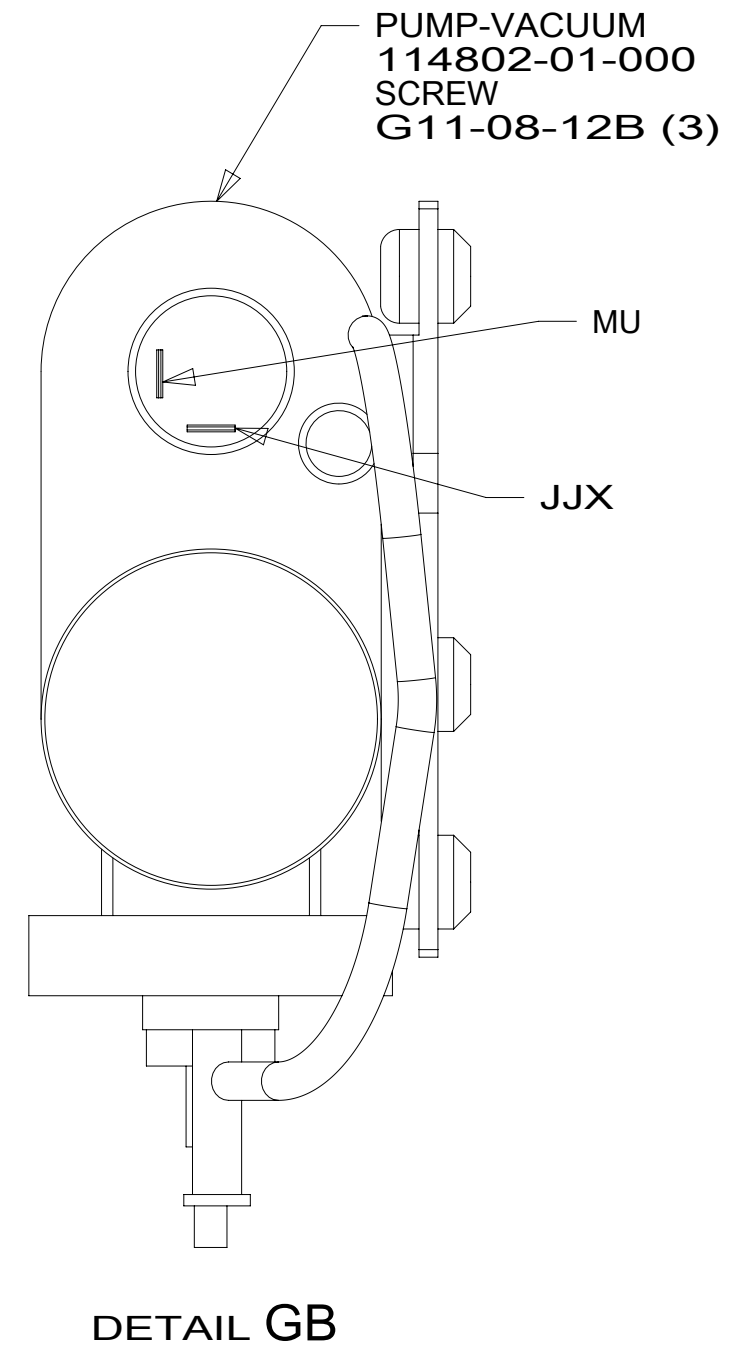
FOR ELECTRICAL TORQUE SPECIFICATIONS SEE DWG NO. 128783-01-000

FOR ELECTRICAL CALLOUTS SEE DWG NO. 121339-01-000

- 19V RADIO-AM/FM STEREO CD PLAYER
- 74L VIDEO CAMERA SYS W/COLOR MON
- 265 CODES/STANDARDS-CSA/CMVSS
- 1B1 CODES/STANDARDS USA

DESCRIPTION:		
<b>WIRING INSTL-FRONT END</b>		
SHEET:	ITEM/PART NO.:	REV
6 OF 9	000002747 / 31019701000	

8 7 6 5 4 3 2 1



VIEW GA

265 CODES/STANDARDS-CSA/CMVSS  
1B1 CODES/STANDARDS USA

FOR ELECTRICAL TORQUE SPECIFICATIONS SEE DWG NO. 128783-01-000

FOR ELECTRICAL CALLOUTS SEE DWG NO. 121339-01-000

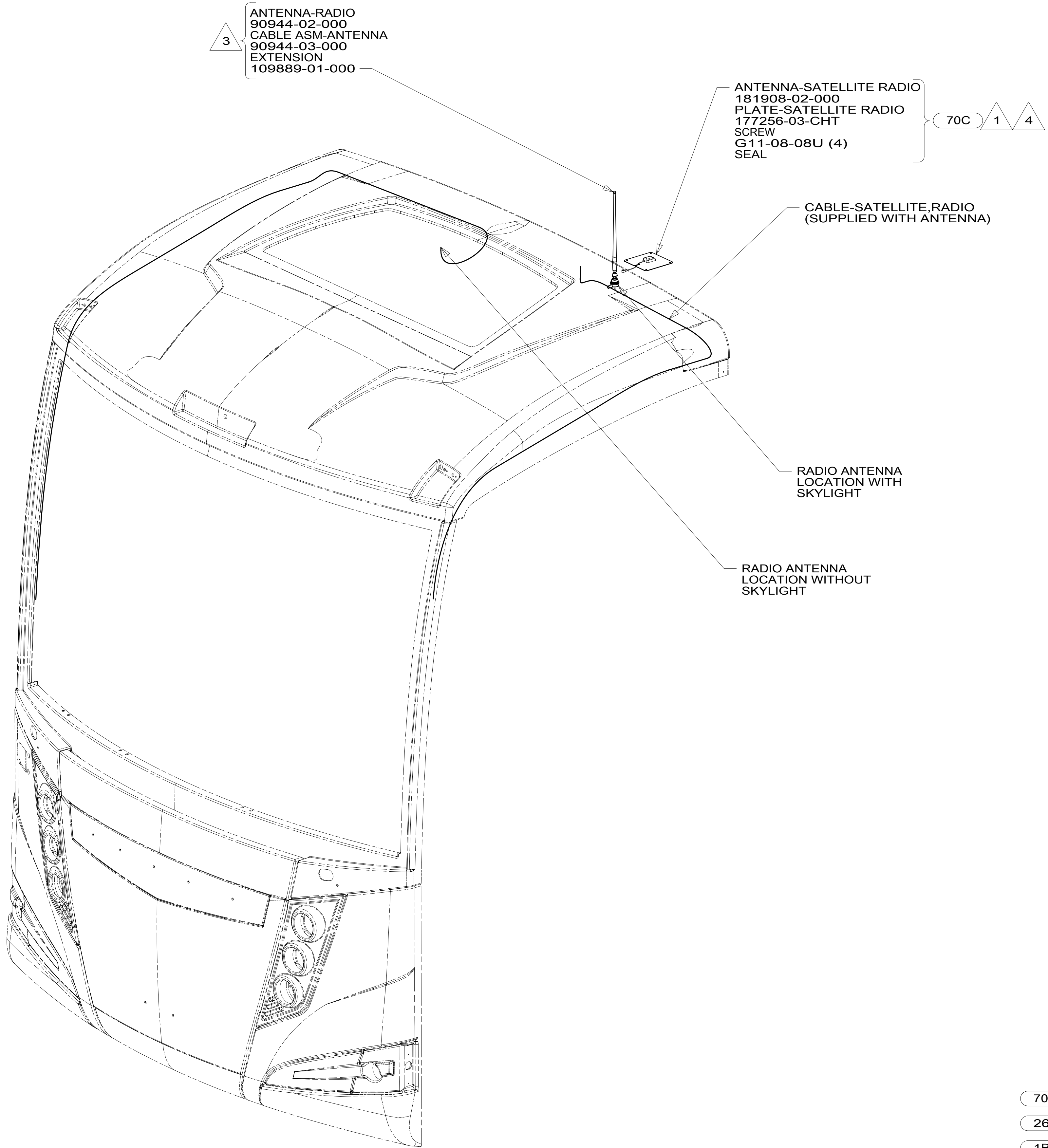
DESCRIPTION: <b>WIRING INSTL-FRONT END</b>		
SHEET: 7 OF 9	ITEM/PART NO: 000002747 / 31019701000	REV

8 7 6 5 4 3 2 1 19-Sep-2016

8 7 6 5 4 3 2 1

D  
C  
B  
A

D  
C  
B  
A



3  
 ANTENNA-RADIO  
 90944-02-000  
 CABLE ASM-ANTENNA  
 90944-03-000  
 EXTENSION  
 109889-01-000

ANTENNA-SATELLITE RADIO  
 181908-02-000  
 PLATE-SATELLITE RADIO  
 177256-03-CHT  
 SCREW  
 G11-08-08U (4)  
 SEAL

70C 1 4

CABLE-SATELLITE,RADIO  
 (SUPPLIED WITH ANTENNA)

RADIO ANTENNA  
 LOCATION WITH  
 SKYLIGHT

RADIO ANTENNA  
 LOCATION WITHOUT  
 SKYLIGHT

- NOTES:
- 4 LOCATED ON ROOF ASM WITH SKYLIGHT OPTION,  
LOCATED ON ROOF CAP WITHOUT SKYLIGHT.
  - 3 SEAL AROUND ANTENNA BASE.
  - 2 ROUTE CABLE ALONG A-POST,UNDER TRIM COVER.
  - 1 MOUNT ANTENNA SUCH THAT BASE IS SQUARE W/REAR  
OF ROOF CAP & HOLE IS DIRECTLY OVER HOLE IN  
FIBERGLASS. SEAL HOLE IN ROOF CAP, BASE AT SCREWS.

FOR ELECTRICAL  
 TORQUE  
 SPECIFICATIONS  
 SEE DWG NO.  
 128783-01-000

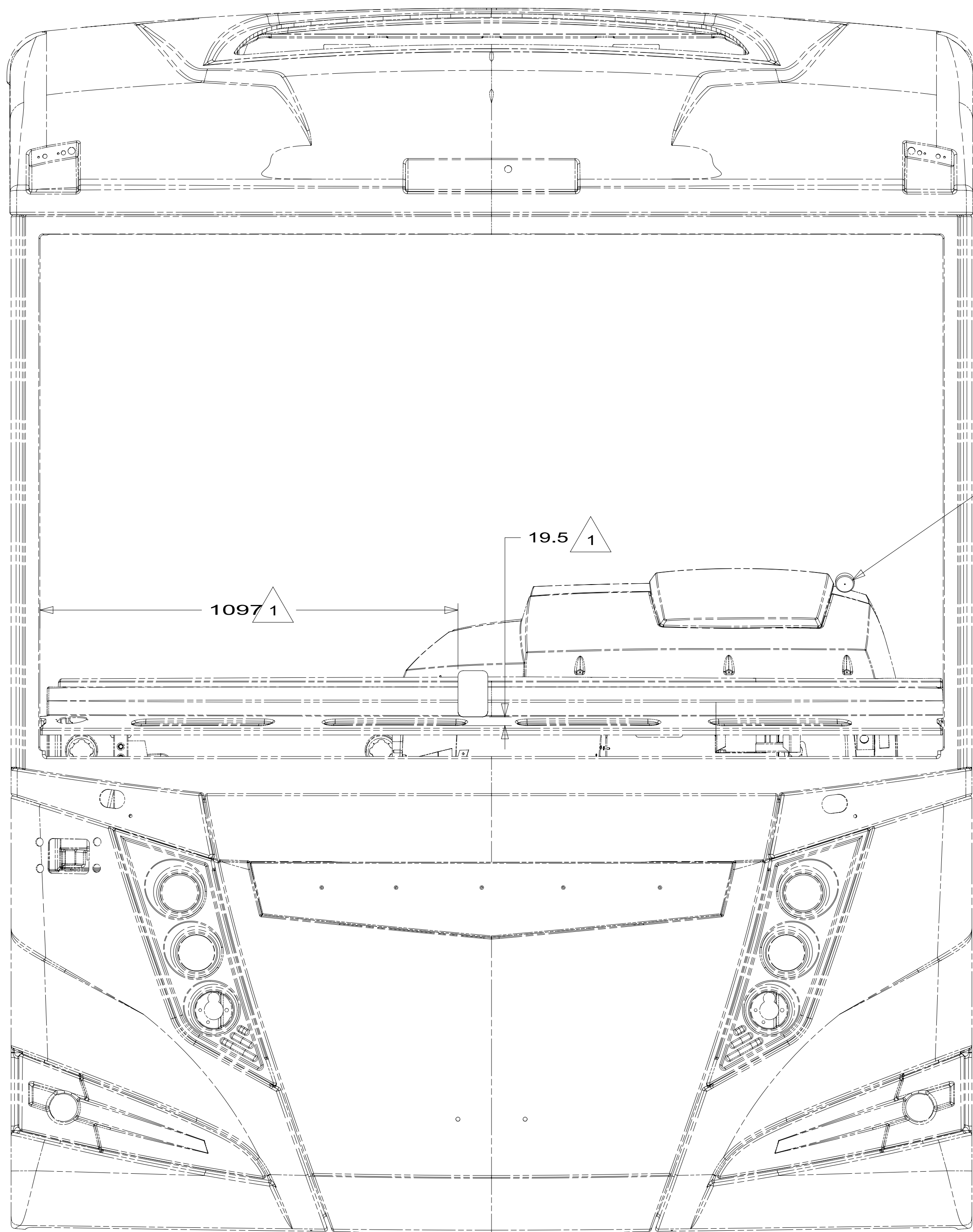
FOR ELECTRICAL  
 CALLOUTS  
 SEE DWG NO.  
 121339-01-000

- 70C RADIO - SATELLITE
- 265 CODES/STANDARDS-CSA/CMVSS
- 1B1 CODES/STANDARDS USA

DESCRIPTION: <b>WIRING INSTL-FRONT END</b>	
SHEET: <b>8 OF 9</b>	ITEM/PART NO: <b>000002747 / 31019701000</b>

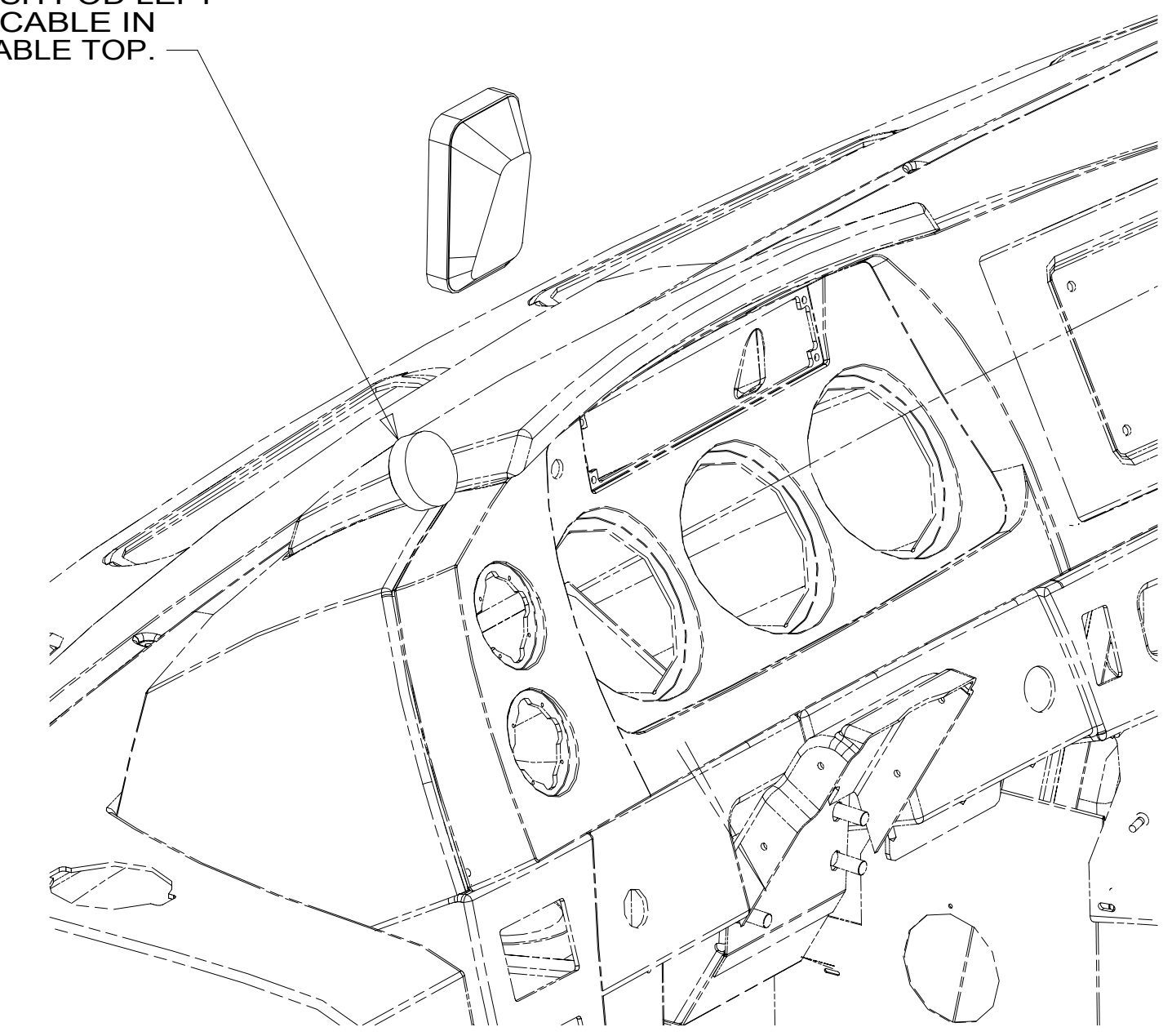
8 7 6 5 4 3 2 1 19-Sep-2016



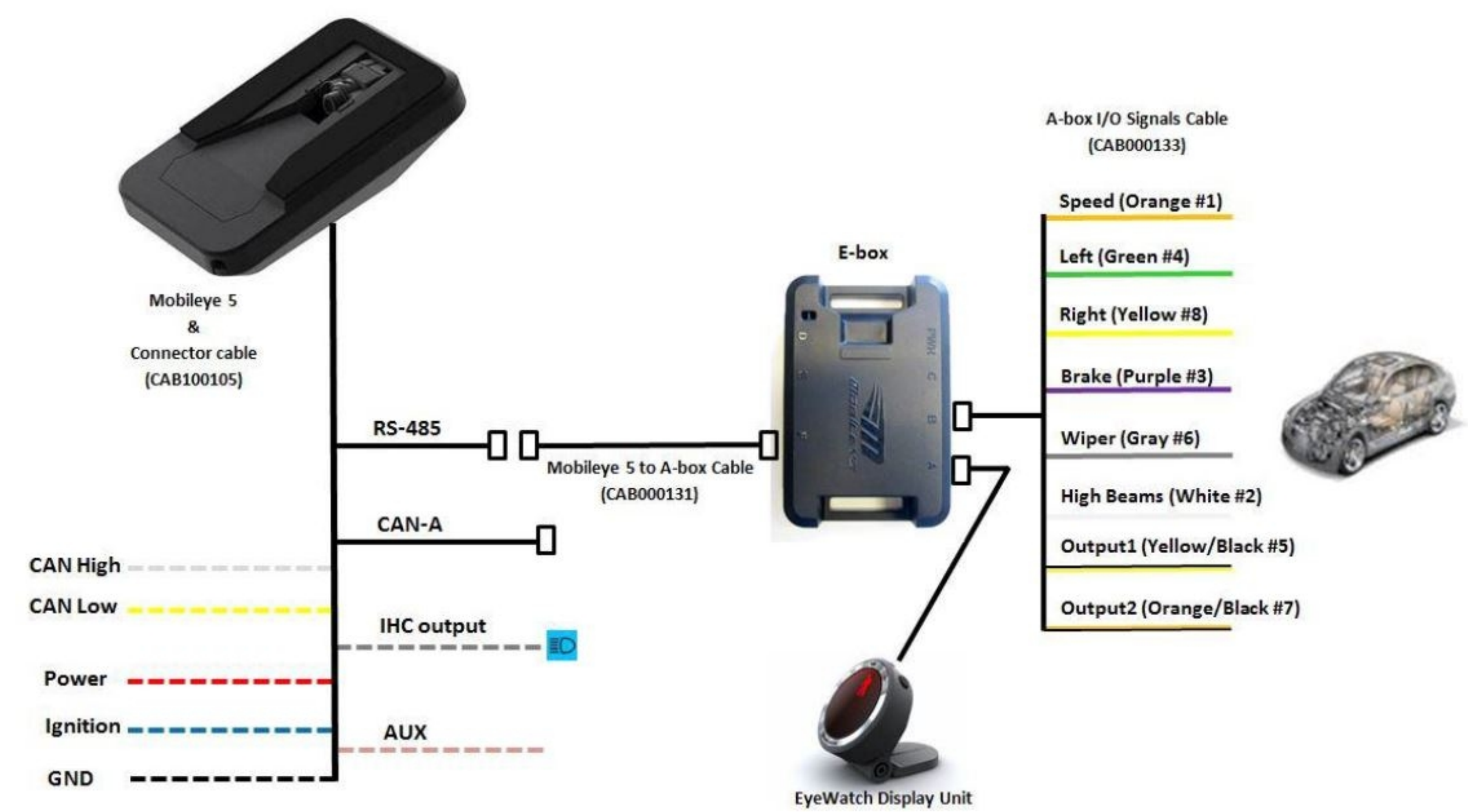


DETAIL JA

MOUNT ON TOP OF DASH POD LEFT OF CLUSTER. ROUTE CABLE IN SEAM UNDER REMOVEABLE TOP.



DETAIL JB



MOBILEYE CONNECTION DIAGRAM

1 ALL DIMENSIONS FROM BLACK LINE IN WINDSHIELD REF DIMENSION: CAMERA TO BE MOUNTED 50 MM RIGHT OF CENTER OF COACH AND 30 MM ABOVE DASH AT WINDSHIELD.

NOTES:

265 CODES/STANDARDS-CSA/CMVSS  
1B1 CODES/STANDARDS USA

FOR ELECTRICAL TORQUE SPECIFICATIONS SEE DWG NO. 128783-01-000

FOR ELECTRICAL CALLOUTS SEE DWG NO. 121339-01-000

DESCRIPTION:	1B1 265	
WIRING INSTL-FRONT END		
SHEET:	ITEM/PART NO.:	REV
9 OF 9	000002747 / 31019701000	