

		R42QD/QL
RED	1B1	136135-07-071
	265	136136-07-071
MAIN	1B1	174031-01-062
	265	174031-01-062
GRN	1B1	136135-08-071
	265	136136-08-071
LT BLU	1B1	136135-21-071
	265	136136-21-071
INVERTER CHARGER MAIN	1B1	136137-01-087
	265	136138-01-087
YEL	1B1	136131-05-131 <sup>1</sup>
	265	136134-05-131 <sup>1</sup>
GLD	1B1	136131-10-075
	265	136134-10-075
GLD-2	1B1	136131-20-060
	265	136134-20-060
WHT	1B1	136135-09-067
	265	136136-09-067
RANGE	1B1	136135-01-056 <sup>2</sup>
	265	136136-01-056 <sup>2</sup>
AWNING	1B1	136131-01-072
	265	136134-01-072

63H

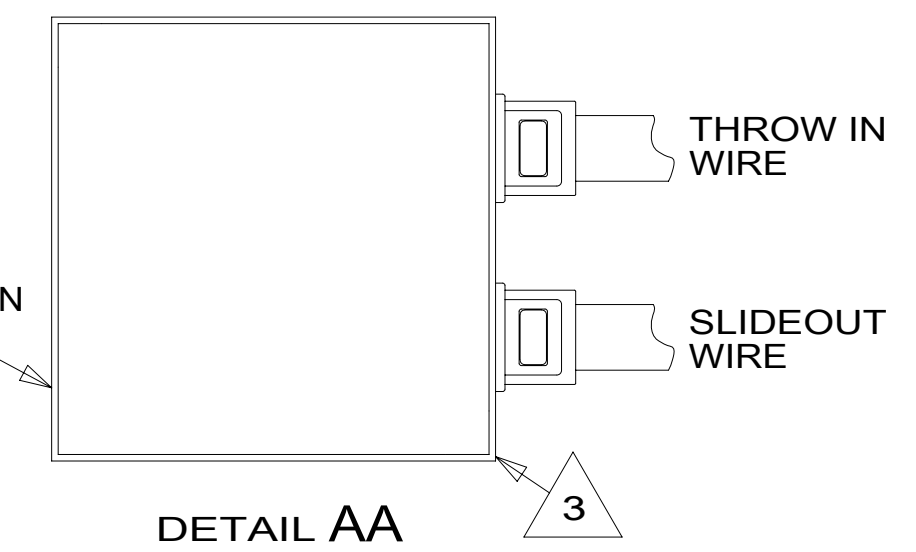
		R42QD/QL
INVERTER CHARGER SUB MAIN	1B1	136137-01-087
	265	136138-01-087
BLU	1B1	136131-02-224 <sup>1</sup>
	265	136134-02-224 <sup>1</sup>
BRN	1B1	136131-03-098 <sup>1</sup>
	265	136134-03-098 <sup>1</sup>
PUR	1B1	136131-04-095 <sup>1</sup>
	265	136134-04-095 <sup>1</sup>
ORG	1B1	136131-16-160
	265	136134-16-160
BLK	1B1	136131-06-056 <sup>1</sup>
	265	136134-06-056 <sup>1</sup>
SIL	1B1	136131-11-056 <sup>1</sup>
	265	136134-11-056 <sup>1</sup>
GRY	1B1	136131-15-092 <sup>1</sup>
	265	136134-15-092 <sup>1</sup>
GROUND MAIN		136145-01-065
GROUND ATS		136145-01-020
GROUND INVERTER		136145-04-006
CABLE ASM GEN		174031-03-095
TAILGATE	1B1	136135-01-045
	265	136136-01-045

214

67G

9PC

- BOX 8289-01-000
- SCREW G11-08-12B (2) 8294-01-000
- COVER CONNECTOR 8356-01-000
- WIRE ASM-GROUND 8355-01-000
- CONNECTOR 133678-01-000
- SCREW-GROUND GREEN 8314-01-000 (3)
- 103291-01-000



- 67G GEN-10KW\_ONAN QUIET DIESEL
- 9PC TAILGATE PACKAGE
- 63H AWNING (2) PATIO, ARMLESS
- 214 DISHWASHER DRAWER STYLE
- 265 CODES/STANDARDS-CSA/CMVSS
- 1B1 CODES/STANDARDS USA

**WINNEBAGO**  
COPYRIGHT 2016 WINNEBAGO INDUSTRIES, INC.

DSNR:	ALL DIMENSIONS ARE IN MILLIMETERS
DFFR:	
UNSPECIFIED TOLERANCES:	MATERIAL:
WHOLE DIM (X) : 3	
ONE-PLACE (X.X) : 1.5	
TWO-PLACE (X.XX) : 0.50	
ANGLE : 1°	
REFER TO ES0018 FOR FASTENER TIGHTENING GUIDELINES	WEIGHT: (LBS) FIRST USED:
DESCRIPTION: <b>LOAD CENTER/ATS ASM</b>	
SHEET: 1 OF 3	ITEM/PART NO: 000002481 / 31010401000
REF:	1 19-Sep-2016

<sup>3</sup> CONNECT WIRES, WHT TO WHT, BLK TO BLK, GROUNDS TO GROUNDS, KEEPING CIRCUITS SEPERATED.

<sup>2</sup> SEE DETAIL AA FOR CONNECTOR INSTALLATION.

<sup>1</sup> SEE DETAIL BA FOR CONNECTOR INSTALLATION.

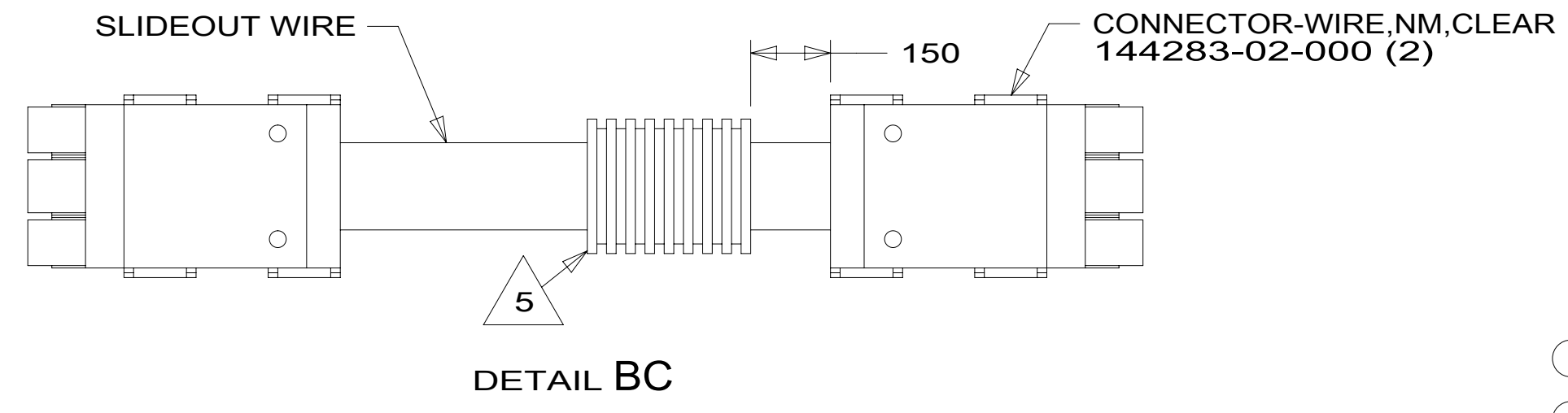
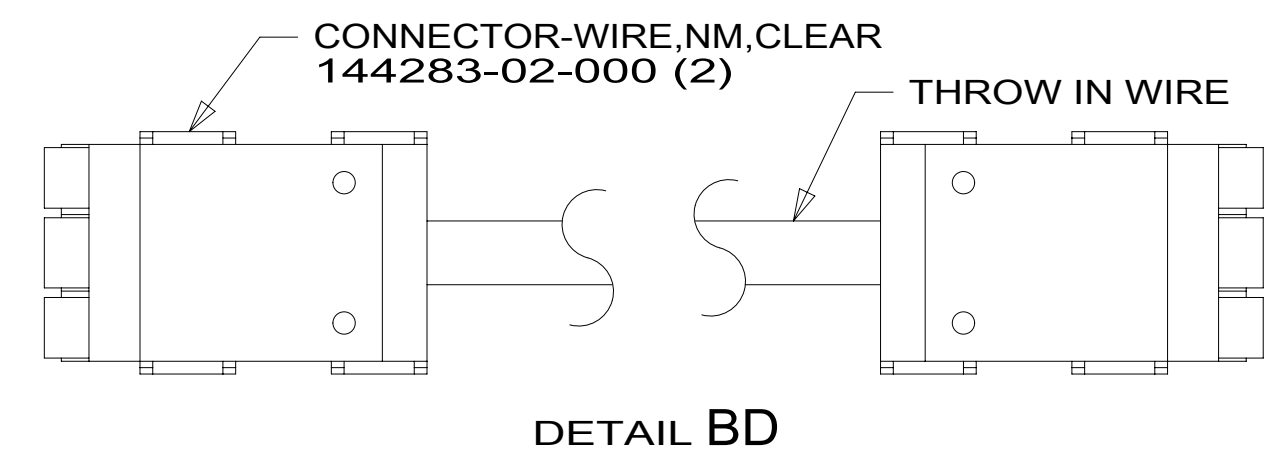
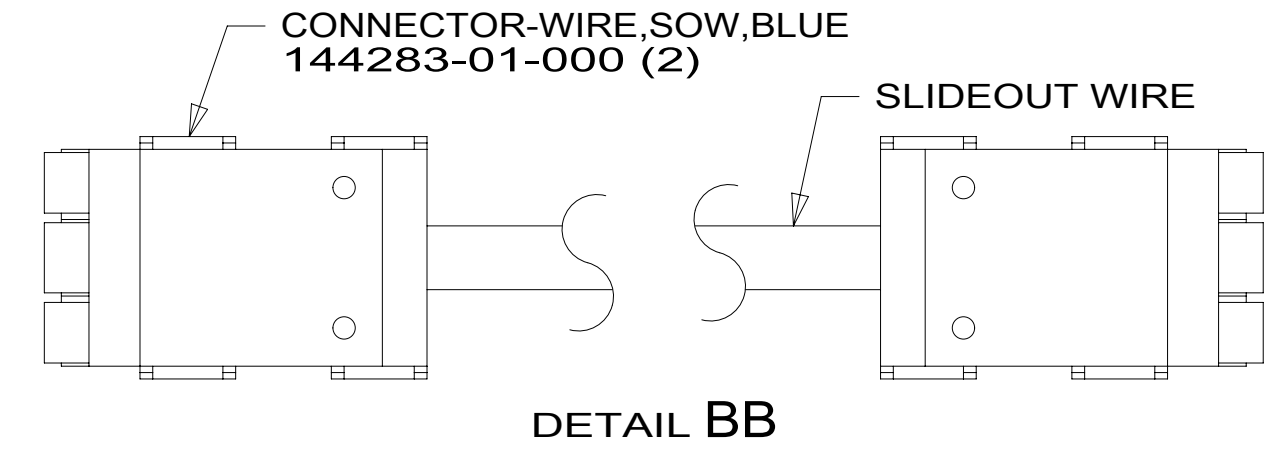
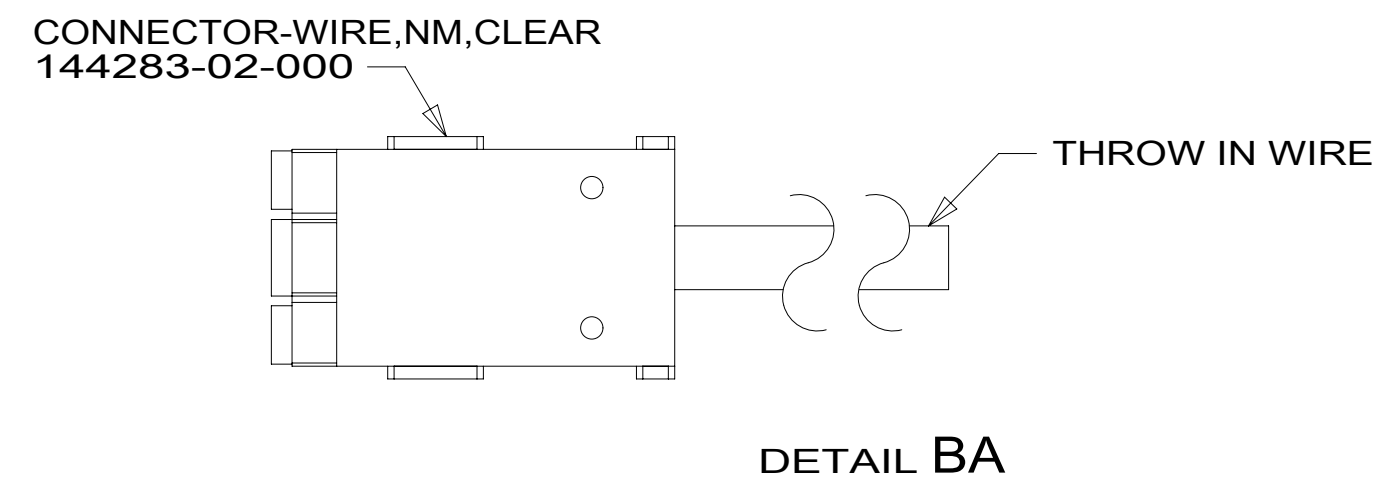
NOTES:

FOR ELECTRICAL TORQUE SPECIFICATIONS SEE DWG NO. 128783-01-000

FOR ELECTRICAL CALLOUTS SEE DWG NO. 121339-01-000

		R42QD/QL	
SLIDEOUT WIRE #1		136151-03-025	4
SLIDEOUT WIRE #2		136151-04-025	4
SLIDEOUT WIRE #3		136151-05-025	4
SLIDEOUT WIRE #4		136151-15-025	4
SLIDEOUT WIRE #5		136152-01-042	3
SLIDEOUT WIRE #6		136151-04-022	2
SLIDEOUT WIRE #7		136151-02-070	2
SLIDEOUT WIRE #8		136151-06-070	2
SLIDEOUT WIRE #9		136151-11-070	2
THROW IN WIRE #1	1B1	136131-03-052	
	265	136134-03-052	
THROW IN WIRE #2	1B1	136131-03-032	1
	265	136134-03-032	1
THROW IN WIRE #3	1B1	136135-01-017	3
	265	136136-01-017	3

		R42QD/QL	
THROW IN WIRE #4	1B1	136131-04-030	
	265	136134-04-030	
THROW IN WIRE #5	1B1	136131-04-055	1
	265	136134-04-055	1
THROW IN WIRE #6	1B1	136131-04-070	1
	265	136134-04-070	1
THROW IN WIRE #7			
THROW IN WIRE #8	1B1	136131-02-049	1
	265	136134-02-049	1
THROW IN WIRE #9	1B1	136131-11-025	1
	265	136134-11-025	1
THROW IN WIRE #10	1B1	136131-15-008	
	265	136134-15-008	
THROW IN WIRE #11	1B1	136131-03-035	
	265	136134-03-035	



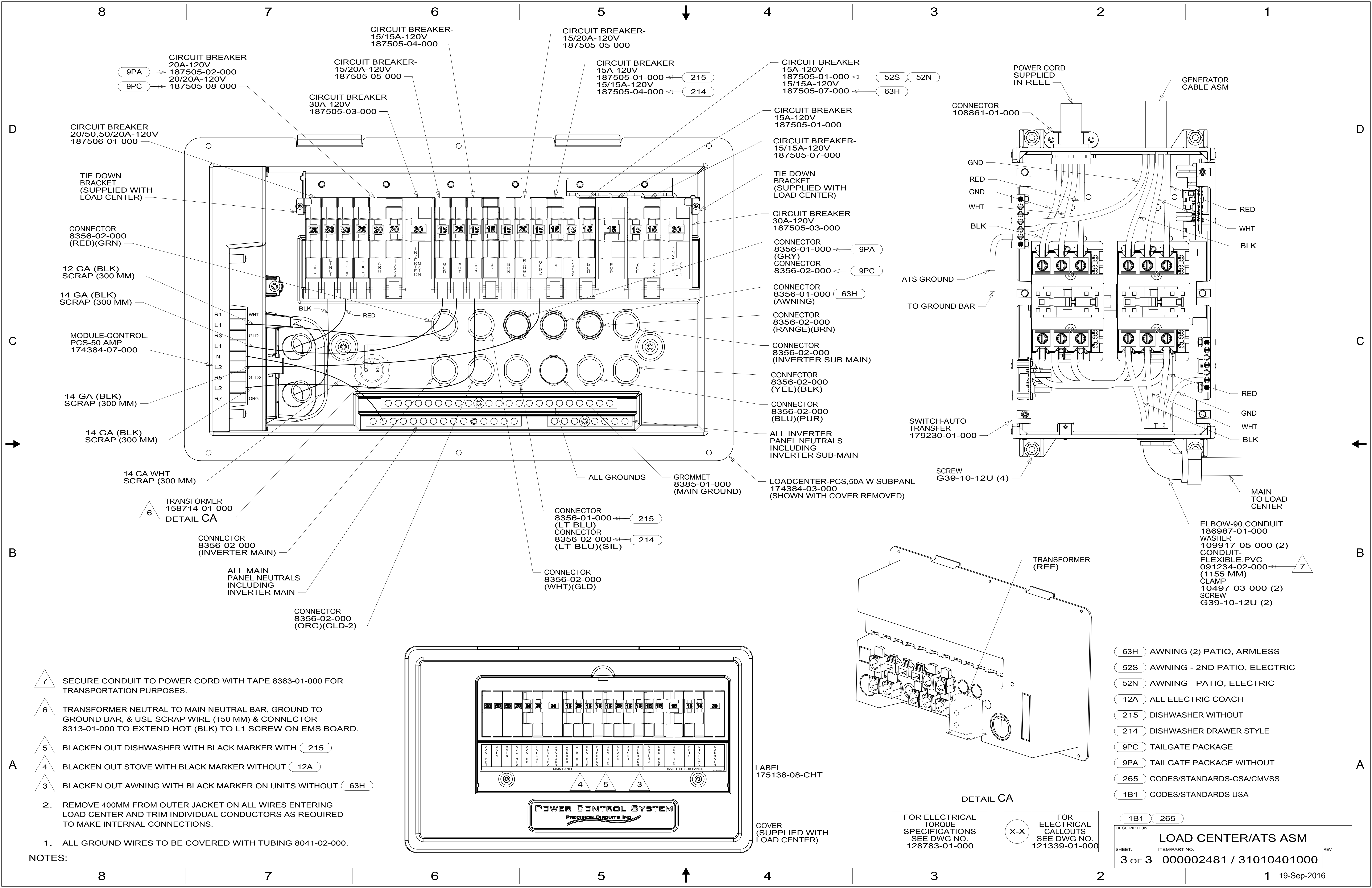
- NOTES:
- 5 APPLY 300MM OF CONDUIT-CONVOLUTE 41953-05-000 OVER WIRE AT DIMENSION SHOWN AND SECURE BOTH ENDS OF TUBING TO WIRE WITH TAPE 8363-01-000.
  - 4 SEE DETAIL BC FOR CONNECTOR INSTALLATION.
  - 3 SEE DETAIL AB FOR CONNECTOR INSTALLATION.
  - 2 SEE DETAIL BB FOR CONNECTOR INSTALLATION.
  - 1 SEE DETAIL BA FOR CONNECTOR INSTALLATION.

- 214 DISHWASHER DRAWER STYLE
- 265 CODES/STANDARDS-CSA/CMVSS
- 1B1 CODES/STANDARDS-USA

FOR ELECTRICAL TORQUE SPECIFICATIONS SEE DWG NO. 128783-01-000

FOR ELECTRICAL CALLOUTS SEE DWG NO. 121339-01-000

DESCRIPTION:	LOAD CENTER/ATS ASM	
SHEET:	ITEM/PART NO:	REV
2 OF 3	000002481 / 31010401000	



CIRCUIT BREAKER  
20A-120V  
187505-02-000  
9PA  
20/20A-120V  
187505-08-000  
9PC

CIRCUIT BREAKER-  
15/20A-120V  
187505-05-000

CIRCUIT BREAKER-  
15/15A-120V  
187505-04-000

CIRCUIT BREAKER-  
15/20A-120V  
187505-05-000

CIRCUIT BREAKER  
15A-120V  
187505-01-000  
15/15A-120V  
187505-04-000  
215  
214

CIRCUIT BREAKER  
15A-120V  
187505-01-000  
15/15A-120V  
187505-07-000  
52S 52N  
63H

POWER CORD  
SUPPLIED  
IN REEL  
GENERATOR  
CABLE ASM

CONNECTOR  
108861-01-000

CIRCUIT BREAKER  
20/50,50/20A-120V  
187506-01-000

TIE DOWN  
BRACKET  
(SUPPLIED WITH  
LOAD CENTER)

CONNECTOR  
8356-02-000  
(RED)(GRN)

12 GA (BLK)  
SCRAP (300 MM)

14 GA (BLK)  
SCRAP (300 MM)

MODULE-CONTROL,  
PCS-50 AMP  
174384-07-000

14 GA (BLK)  
SCRAP (300 MM)

14 GA (BLK)  
SCRAP (300 MM)

14 GA WHT  
SCRAP (300 MM)

TRANSFORMER  
158714-01-000  
6  
DETAIL CA

CONNECTOR  
8356-02-000  
(INVERTER MAIN)

ALL MAIN  
PANEL NEUTRALS  
INCLUDING  
INVERTER-MAIN

CONNECTOR  
8356-02-000  
(ORG)(GLD-2)

CIRCUIT BREAKER  
30A-120V  
187505-03-000

ALL GROUNDS

GROMMET  
8385-01-000  
(MAIN GROUND)

LOADCENTER-PCS,50A W SUBPANL  
174384-03-000  
(SHOWN WITH COVER REMOVED)

CONNECTOR  
8356-01-000  
(LT BLU)  
CONNECTOR  
8356-02-000  
(LT BLU)(SIL)  
215  
214

CONNECTOR  
8356-02-000  
(WHT)(GLD)

CIRCUIT BREAKER  
15A-120V  
187505-01-000

CIRCUIT BREAKER-  
15/15A-120V  
187505-07-000

TIE DOWN  
BRACKET  
(SUPPLIED WITH  
LOAD CENTER)

CIRCUIT BREAKER  
30A-120V  
187505-03-000

CONNECTOR  
8356-01-000  
(GRY)  
CONNECTOR  
8356-02-000  
(9PC)

CONNECTOR  
8356-01-000  
(AWNING)  
63H

CONNECTOR  
8356-02-000  
(RANGE)(BRN)

CONNECTOR  
8356-02-000  
(INVERTER SUB MAIN)

CONNECTOR  
8356-02-000  
(YEL)(BLK)

CONNECTOR  
8356-02-000  
(BLU)(PUR)

ALL INVERTER  
PANEL NEUTRALS  
INCLUDING  
INVERTER SUB-MAIN

ATS GROUND

TO GROUND BAR

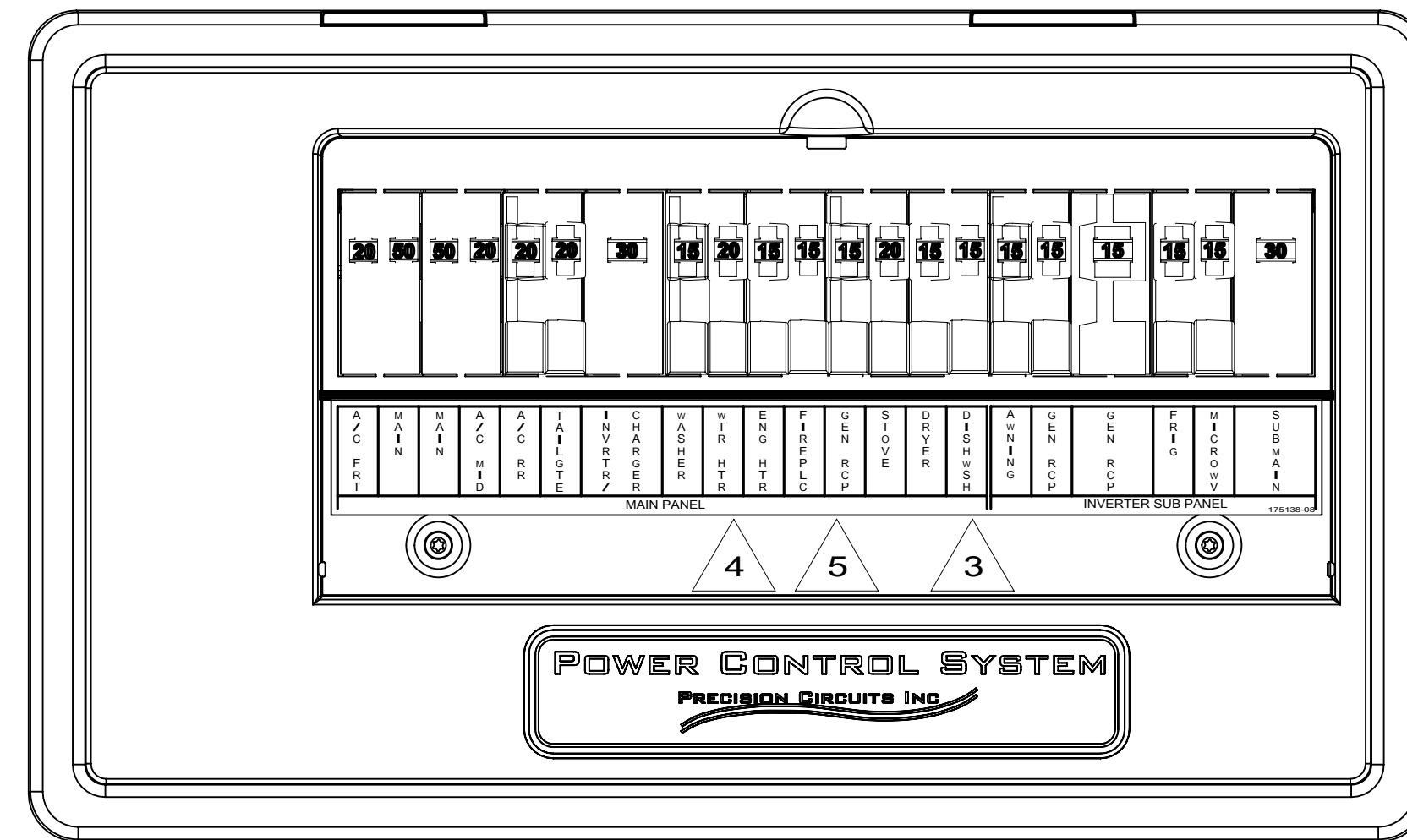
SWITCH-AUTO  
TRANSFER  
179230-01-000

SCREW  
G39-10-12U (4)

MAIN  
TO LOAD  
CENTER

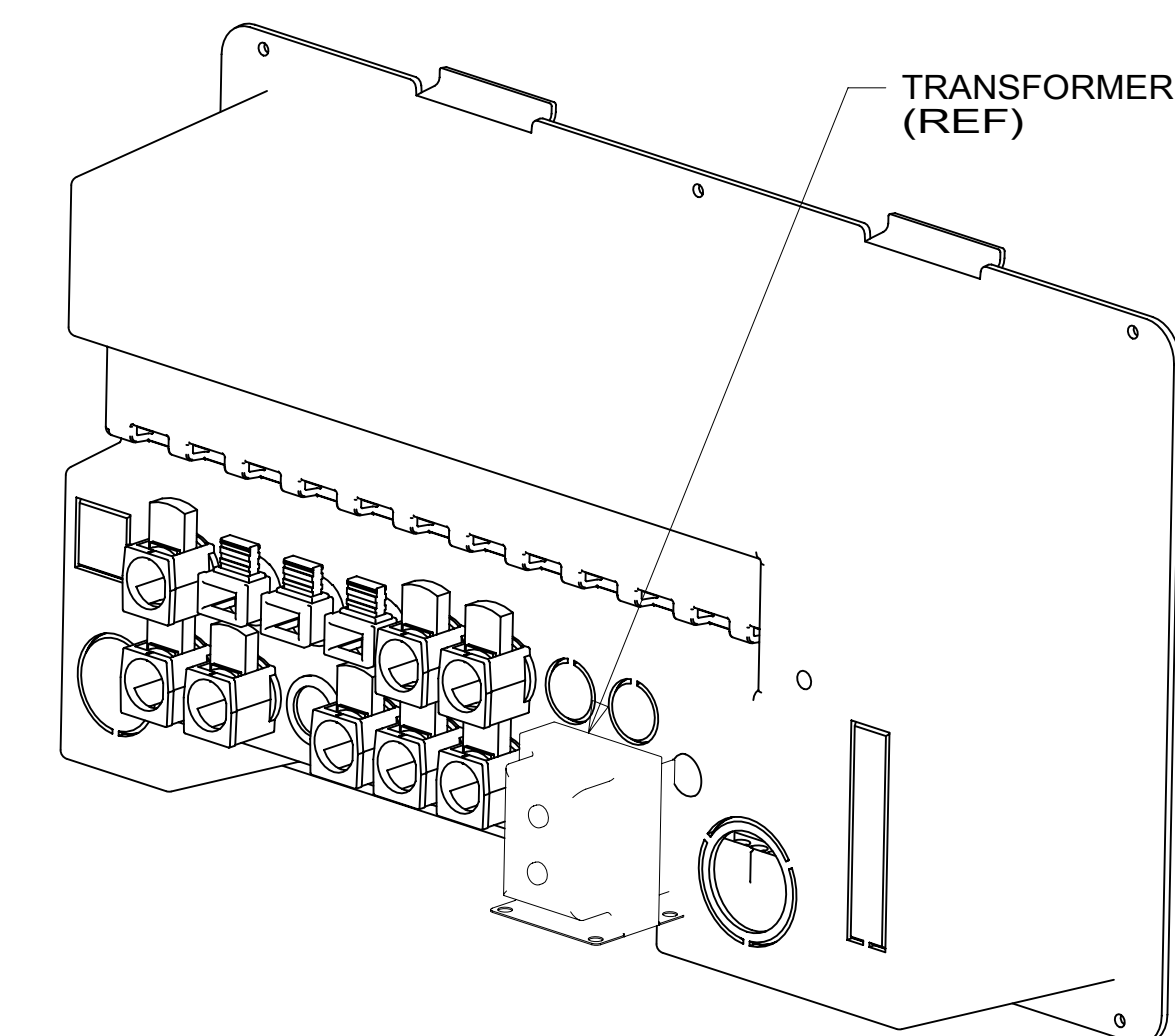
ELBOW-90,CONDUIT  
186987-01-000  
WASHER  
109917-05-000 (2)  
CONDUIT-  
FLEXIBLE,PVC  
091234-02-000  
(1155 MM)  
CLAMP  
10497-03-000 (2)  
SCREW  
G39-10-12U (2)

- NOTES:
- ALL GROUND WIRES TO BE COVERED WITH TUBING 8041-02-000.
  - REMOVE 400MM FROM OUTER JACKET ON ALL WIRES ENTERING LOAD CENTER AND TRIM INDIVIDUAL CONDUCTORS AS REQUIRED TO MAKE INTERNAL CONNECTIONS.
  - BLACKEN OUT AWNING WITH BLACK MARKER ON UNITS WITHOUT 63H
  - BLACKEN OUT STOVE WITH BLACK MARKER WITHOUT 12A
  - BLACKEN OUT DISHWASHER WITH BLACK MARKER WITH 215
  - TRANSFORMER NEUTRAL TO MAIN NEUTRAL BAR, GROUND TO GROUND BAR, & USE SCRAP WIRE (150 MM) & CONNECTOR 8313-01-000 TO EXTEND HOT (BLK) TO L1 SCREW ON EMS BOARD.
  - SECURE CONDUIT TO POWER CORD WITH TAPE 8363-01-000 FOR TRANSPORTATION PURPOSES.



LABEL  
175138-08-CHT

COVER  
(SUPPLIED WITH  
LOAD CENTER)



TRANSFORMER  
(REF)

DETAIL CA

FOR ELECTRICAL  
TORQUE  
SPECIFICATIONS  
SEE DWG NO.  
128783-01-000

FOR ELECTRICAL  
CALLOUTS  
SEE DWG NO.  
121339-01-000

- 63H AWNING (2) PATIO, ARMLESS
- 52S AWNING - 2ND PATIO, ELECTRIC
- 52N AWNING - PATIO, ELECTRIC
- 12A ALL ELECTRIC COACH
- 215 DISHWASHER WITHOUT
- 214 DISHWASHER DRAWER STYLE
- 9PC TAILGATE PACKAGE
- 9PA TAILGATE PACKAGE WITHOUT
- 265 CODES/STANDARDS-CSA/CMVSS
- 1B1 CODES/STANDARDS USA

DESCRIPTION:	1B1 265	
LOAD CENTER/ATS ASM		
SHEET:	ITEM/PART NO:	REV
3 OF 3	000002481 / 31010401000	