

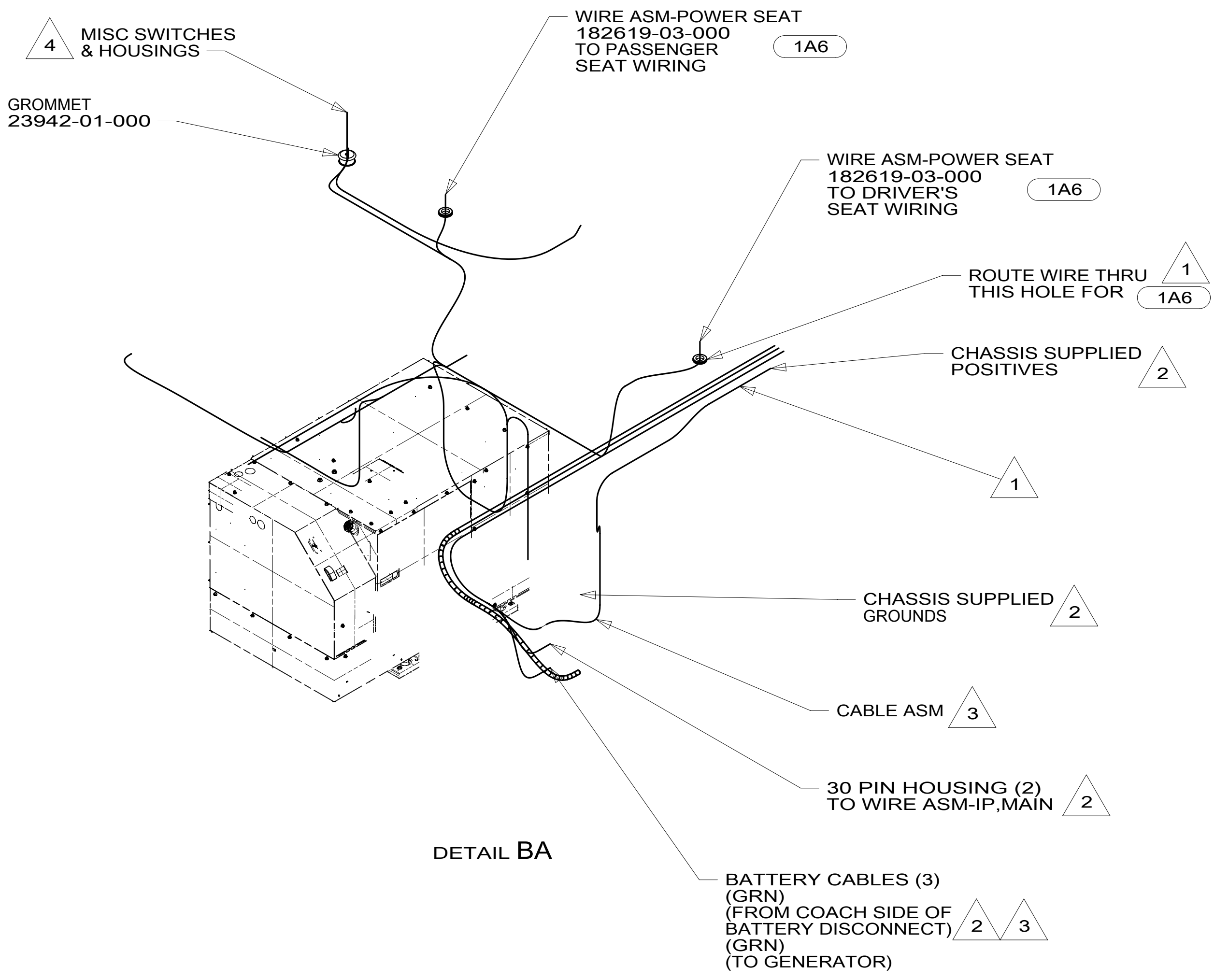
- NOTES:
- 9 COIL CABLE TO CENTER OF CHASSIS.
 - 8 SEE WIRE ASM-CHASSIS FOR ADDITIONAL INFORMATION.
 - 7 REST WIRE IN FRAME RAIL WHEN APPLICABLE.
 - 6 CLAMP 83610-01-000, SCREW G39-08-12B
 - 5 CLAMP 10497-03-000, SCREW G39-08-12B
 - 4 USE TIE-WIRE 8343-04-000 TO SECURE WIRES TO FLOOR SUPPORT FRAME AT LEAST ONCE EVERY 600MM.
 - 3 SEE BATTERY INSTL FOR ADDITIONAL INFORMATION.
 - 2 SEE WIRING INSTL-FRONT END FOR ADDITIONAL INFORMATION.
 - 1 SECURE CORD AWAY FROM ALL MOVING PARTS AND EXHAUST WITH WIRE-TIE 93147-01-000 AS REQUIRED.

FOR ELECTRICAL TORQUE SPECIFICATIONS SEE DWG NO. 128783-01-000

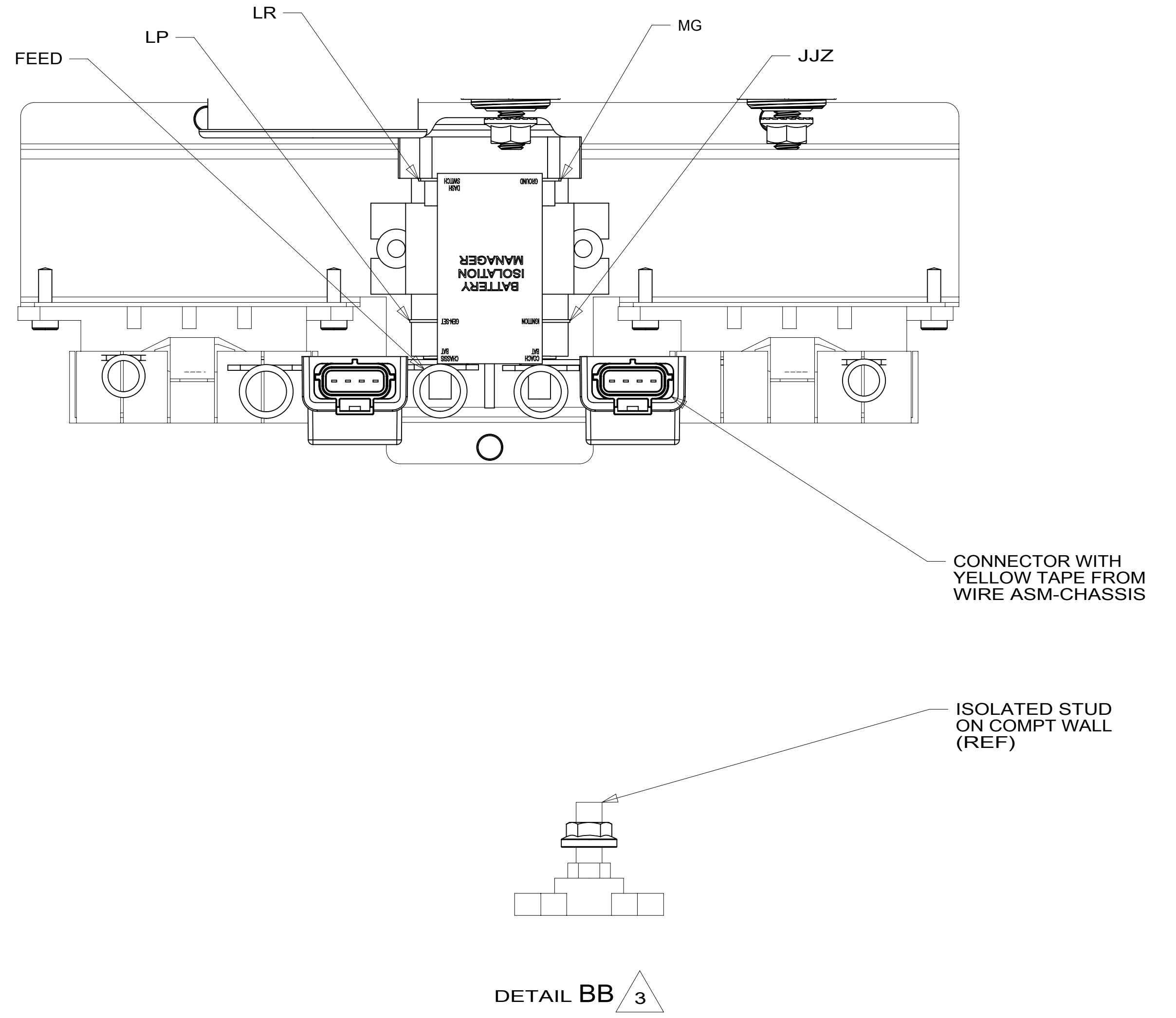
FOR ELECTRICAL CALLOUTS SEE DWG NO. 121339-01-000

265 CODES/STANDARDS-CSA/CMVSS
 1B1 CODES/STANDARDS USA
 1B1 265

WINNEBAGO COPYRIGHT 2016 WINNEBAGO INDUSTRIES, INC.	
DSNR:	ALL DIMENSIONS ARE IN MILLIMETERS
DIFFR:	
UNSPECIFIED TOLERANCES:	MATERIAL:
WHOLE DIM (X) ±	
ONE-PLACE (X.X) ±	
TWO-PLACE (X.XX) ±	
ANGLE ±	
REFER TO ES0018 FOR FASTENER TIGHTENING GUIDELINES	WEIGHT: (LBS) FIRST USED:
DESCRIPTION: WIRING INSTL-CHASSIS	
SHEET: 1 OF 3	ITEM/PART NO.: 00002224 / 30015901000
REF: 1	REV: 19-Sep-2016



DETAIL BA



DETAIL BB 3

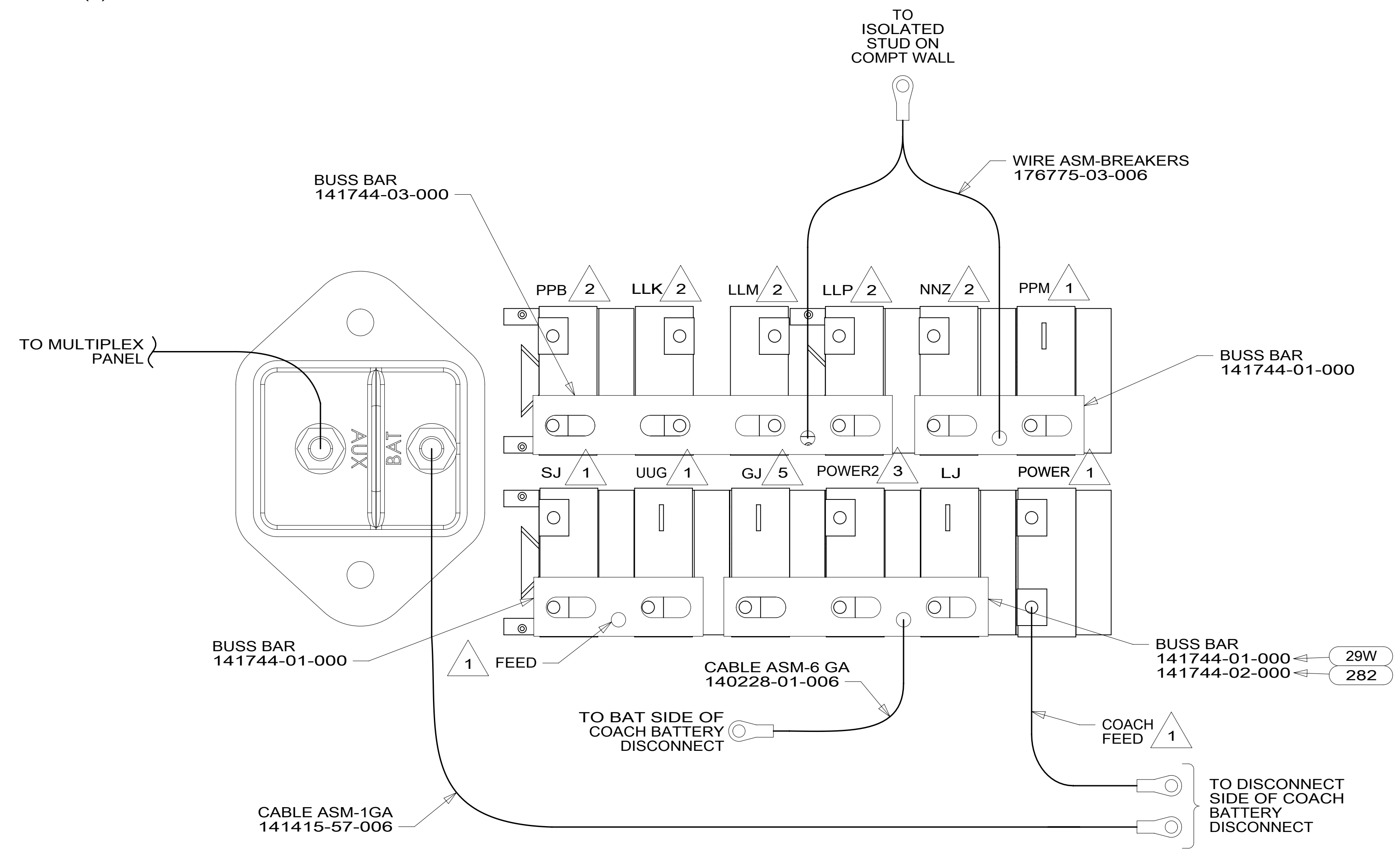
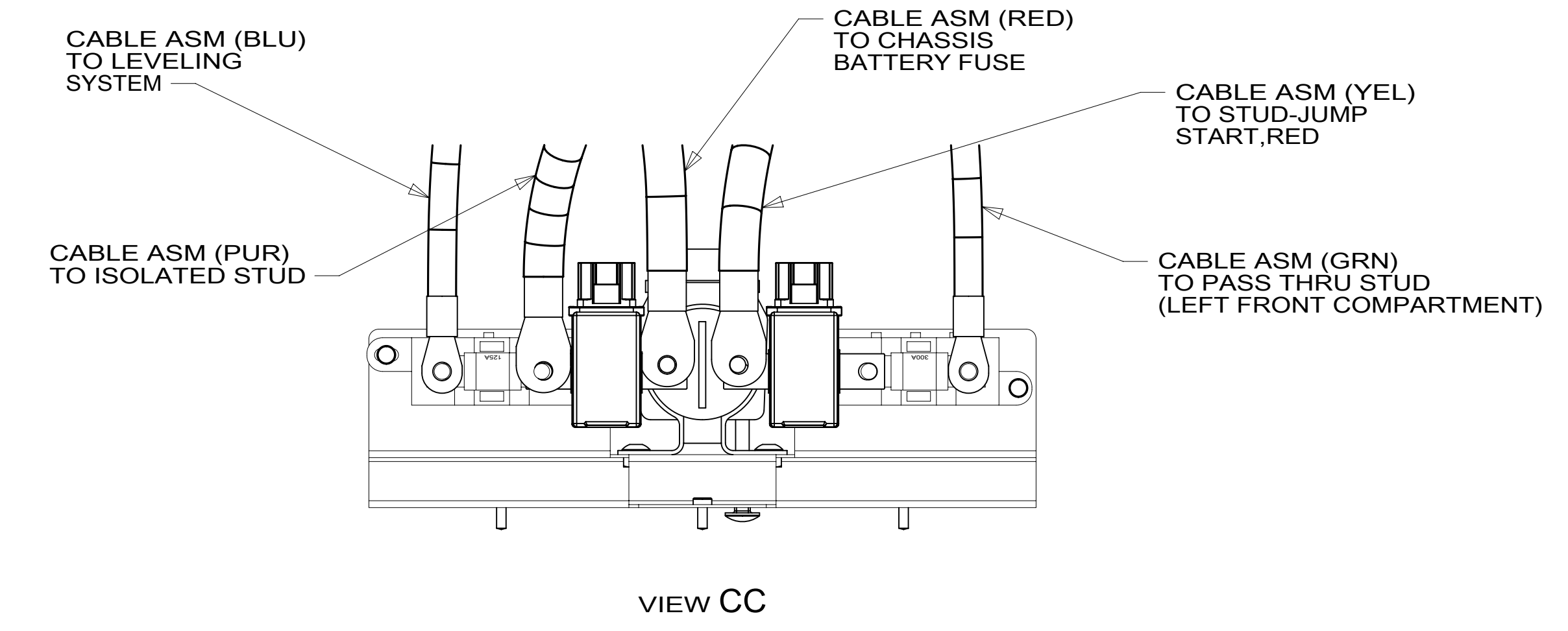
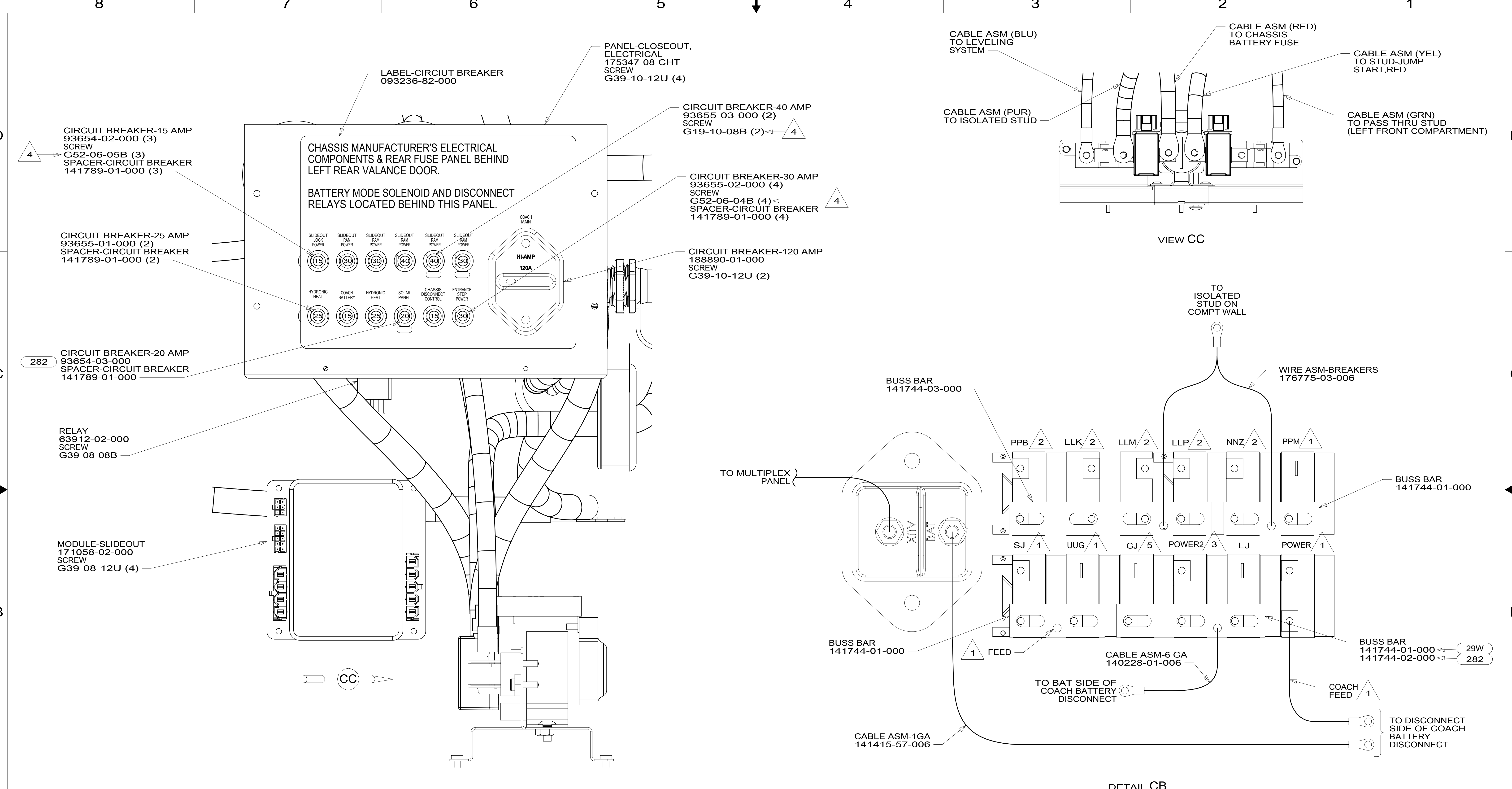
- NOTES:
- 4 SEE WIRE ASM-CHASSIS FOR ADDITIONAL INFORMATION.
 - 3 SEE BATTERY INSTL FOR ADDITIONAL INFORMATION.
 - 2 SEE WIRING INSTL-FRONT END FOR ADDITIONAL INFORMATION.
 - 1 USE PLUG-PLASTIC 61420-12-000 FOR UNUSED HOLE & SEAL.

- 1A6 SEATS-DRIVER/PASSENGER
- 265 CODES/STANDARDS-CSA/CMVSS
- 1B1 CODES/STANDARDS USA

FOR ELECTRICAL TORQUE SPECIFICATIONS SEE DWG NO. 128783-01-000

X-X FOR ELECTRICAL CALLOUTS SEE DWG NO. 121339-01-000

DESCRIPTION:		WIRING INSTL-CHASSIS	
SHEET:	ITEM/PART NO.:	REV	
2 OF 3	000002224 / 30015901000		



4
CIRCUIT BREAKER-15 AMP
93654-02-000 (3)
SCREW
G52-06-05B (3)
SPACER-CIRCUIT BREAKER
141789-01-000 (3)

CIRCUIT BREAKER-25 AMP
93655-01-000 (2)
SPACER-CIRCUIT BREAKER
141789-01-000 (2)

282
CIRCUIT BREAKER-20 AMP
93654-03-000
SPACER-CIRCUIT BREAKER
141789-01-000

RELAY
63912-02-000
SCREW
G39-08-08B

MODULE-SLIDEOUT
171058-02-000
SCREW
G39-08-12U (4)

PANEL-CLOSEOUT,
ELECTRICAL
175347-08-CHT
SCREW
G39-10-12U (4)

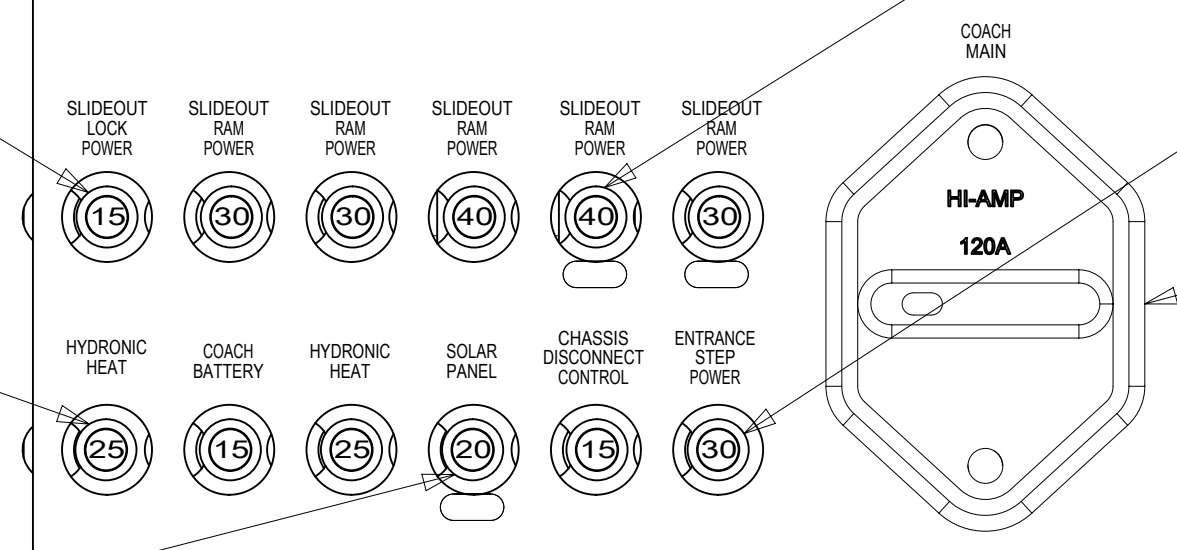
4
CIRCUIT BREAKER-40 AMP
93655-03-000 (2)
SCREW
G19-10-08B (2)

4
CIRCUIT BREAKER-30 AMP
93655-02-000 (4)
SCREW
G52-06-04B (4)
SPACER-CIRCUIT BREAKER
141789-01-000 (4)

CIRCUIT BREAKER-120 AMP
188890-01-000
SCREW
G39-10-12U (2)

CHASSIS MANUFACTURER'S ELECTRICAL
COMPONENTS & REAR FUSE PANEL BEHIND
LEFT REAR VALANCE DOOR.

BATTERY MODE SOLENOID AND DISCONNECT
RELAYS LOCATED BEHIND THIS PANEL.



DETAIL CA

DETAIL CB

- NOTES:
- 5 FROM WIRE ASM-CHASSIS. TIE BACK TO HARNESS WITH 29W
 - 4 REPLACE EXISTING SCREW TO PROPERLY ATTACH BREAKER TO BUSS BAR.
 - 3 FROM WIRE ASM-CHASSIS. MARKED WITH YELLOW TAPE.
 - 2 FROM WIRE ASM-SLIDEOUT ROOMS.
 - 1 FROM WIRE ASM-CHASSIS.

- 29W SOLAR PANEL/BATTERY CHRNG W/O
- 282 SOLAR PANEL - 100 WATT
- 265 CODES/STANDARDS-CSA/CMVSS
- 1B1 CODES/STANDARDS USA

FOR ELECTRICAL
TORQUE
SPECIFICATIONS
SEE DWG NO.
128783-01-000

X-X
FOR
ELECTRICAL
CALLOUTS
SEE DWG NO.
121339-01-000

DESCRIPTION: WIRING INSTL-CHASSIS	
SHEET: 3 OF 3	ITEM/PART NO: 000002224 / 30015901000
REV 19-Sep-2016	