

8 7 6 5 4 3 2 1

D

D

C

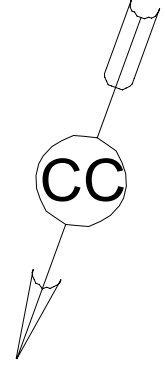
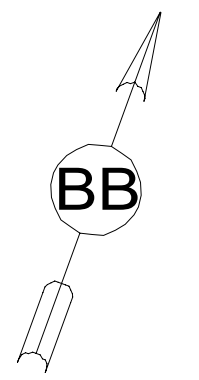
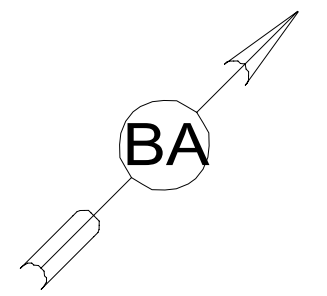
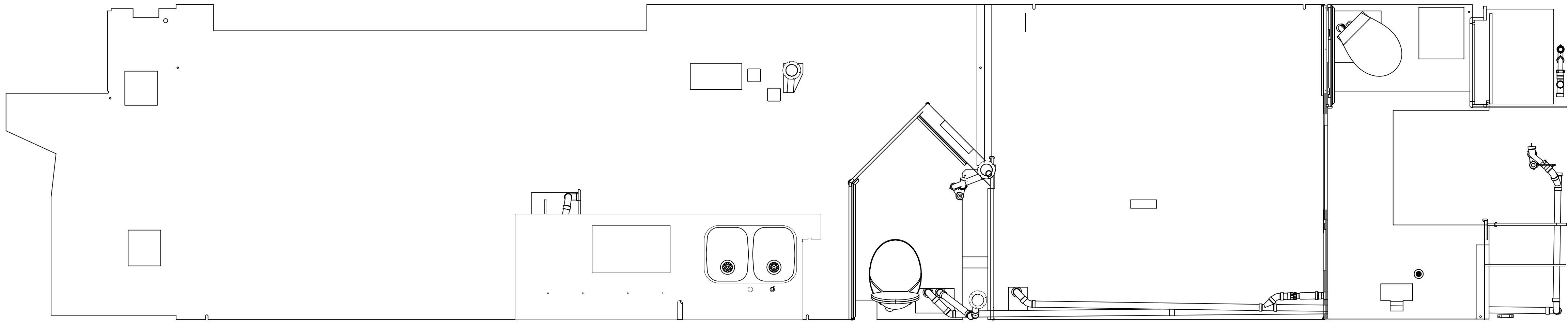
C

B

B

A

A



- 9PC TAILGATE PACKAGE
- 9PA TAILGATE PACKAGE WITHOUT
- 21S WASHER/DRYER STACKED
- 1B1 CODES/STANDARDS USA
- 265 CODES/STDS-CSA,CMVSS
- 54E WASHER DRYER
- 21M WASHER/DRYER PREP
- 214 DISHWASHER DRAWER STYLE

- 10. APPLY PRIMER 126427-02-000 AND CEMENT 126427-01-000 BETWEEN ELBOW AND FLEX PIPE.
- 9. SEE DRAWING 061607 FOR INSTALLATION OF GROMMETS.
- 8. SECURE DRAINAGE PIPES TO CABINET USING WIRE TIE 108046-02-000, AND SCREW 000G67-10-12U AT INTERVALS OF NOT OF NOT MORE THAN 4 FEET APART.
- 7. SECURE VENT PIPE TO GROMMET WITH CLAMP 062401-02-000.
- 6. VENT PIPE MUST PROJECT 51 MIN AND 64 MAX ABOVE ROOF FOR PROPER FIT AND FUNCTION. ADD S-1 (116666-01-CHT SEAL-VENT PIPE) AROUND PIPE ON ROOF BEFORE VENT CAP IS INSTALLED.
- 5. SEAL AROUND SHOWER WITH SILICONE.
- 4. USE SMOOTH PLUMBERS PUTTY 167459-01-000 TO SEAL STRAINER (0.2 PER STRAINER).
- 3. ALL PIPE AND FITTINGS TO BE ASSEMBLED WITH SOLVENT 004020-01-000 (USA), 004020-02-000 (CAN)
- 2. SLOPE OF TRAP ARM MUST BE 6 PER 305 mm.
- 1. SLOPE OF HORIZONTAL PIPING TO BE MINIMUM OF 3 PER 305 mm.

NOTES:

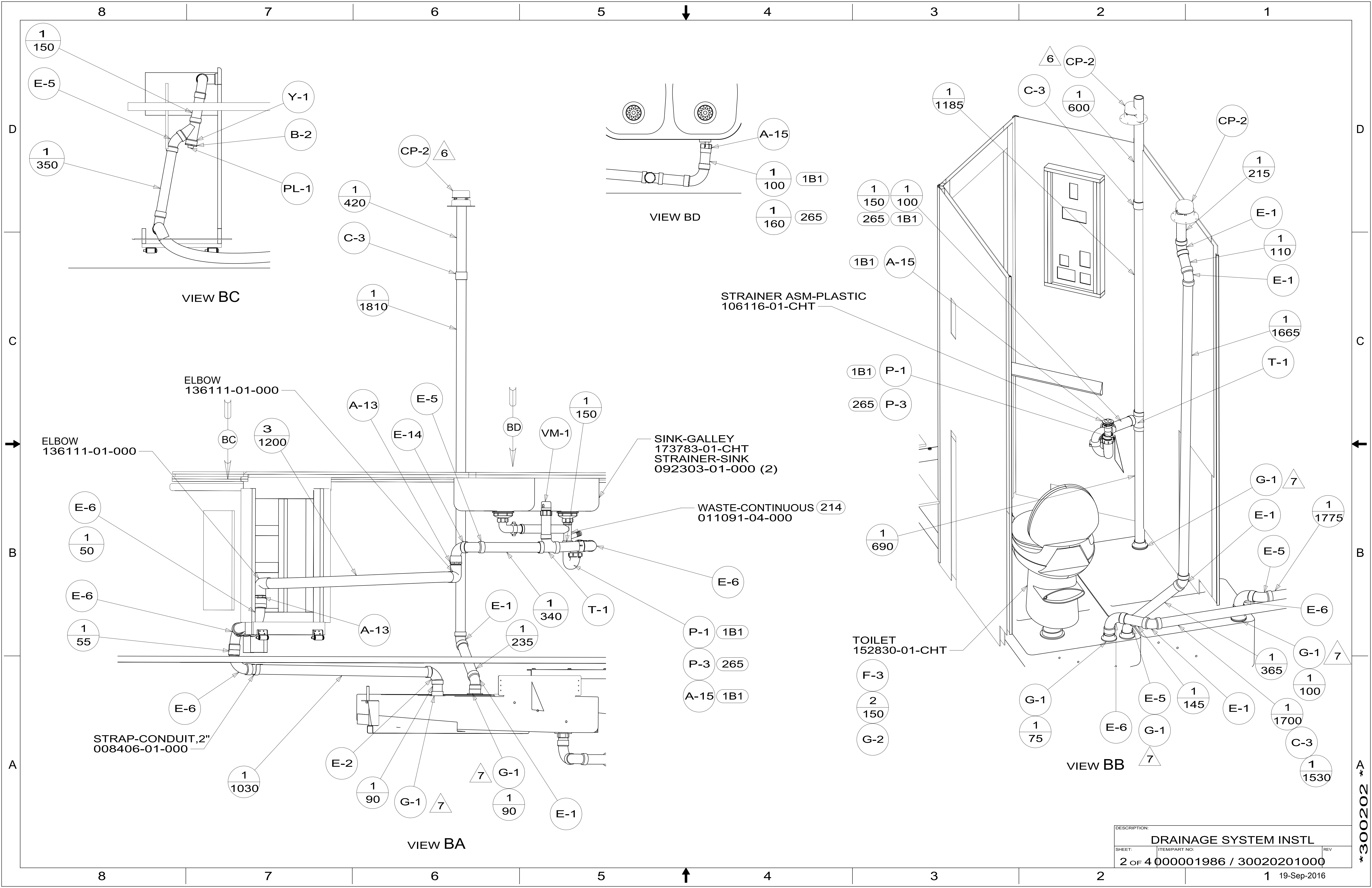
X-X  
 FOR  
 DRAINAGE  
 CALLOUTS  
 SEE DWG NO.  
 116229-01-000

COPYRIGHT 2016 WINNEBAGO INDUSTRIES, INC.

DSNR:		ALL DIMENSIONS ARE IN MILLIMETERS	
DIFTR:			
UNSPECIFIED TOLERANCES:		MATERIAL:	
WHOLE DIM (X) :	3		
ONE-PLACE (X.X) :	1.5		
TWO-PLACE (X.XX) :	0.50		
ANGLE :	1°	WEIGHT: (LBS)	FIRST USED: (REF)
REFER TO ES0018 FOR FASTENER TIGHTENING GUIDELINES			
<b>DESCRIPTION:</b>			
<b>DRAINAGE SYSTEM INSTL</b>			
SHEET:	ITEM/PART NO:	REV	
<b>1 OF 4 000001986 / 30020201000</b>			
REF:		1 19-Sep-2016	

8 7 6 5 4 3 2 1

\*300202\*



VIEW BC

VIEW BD

VIEW BB

VIEW BA

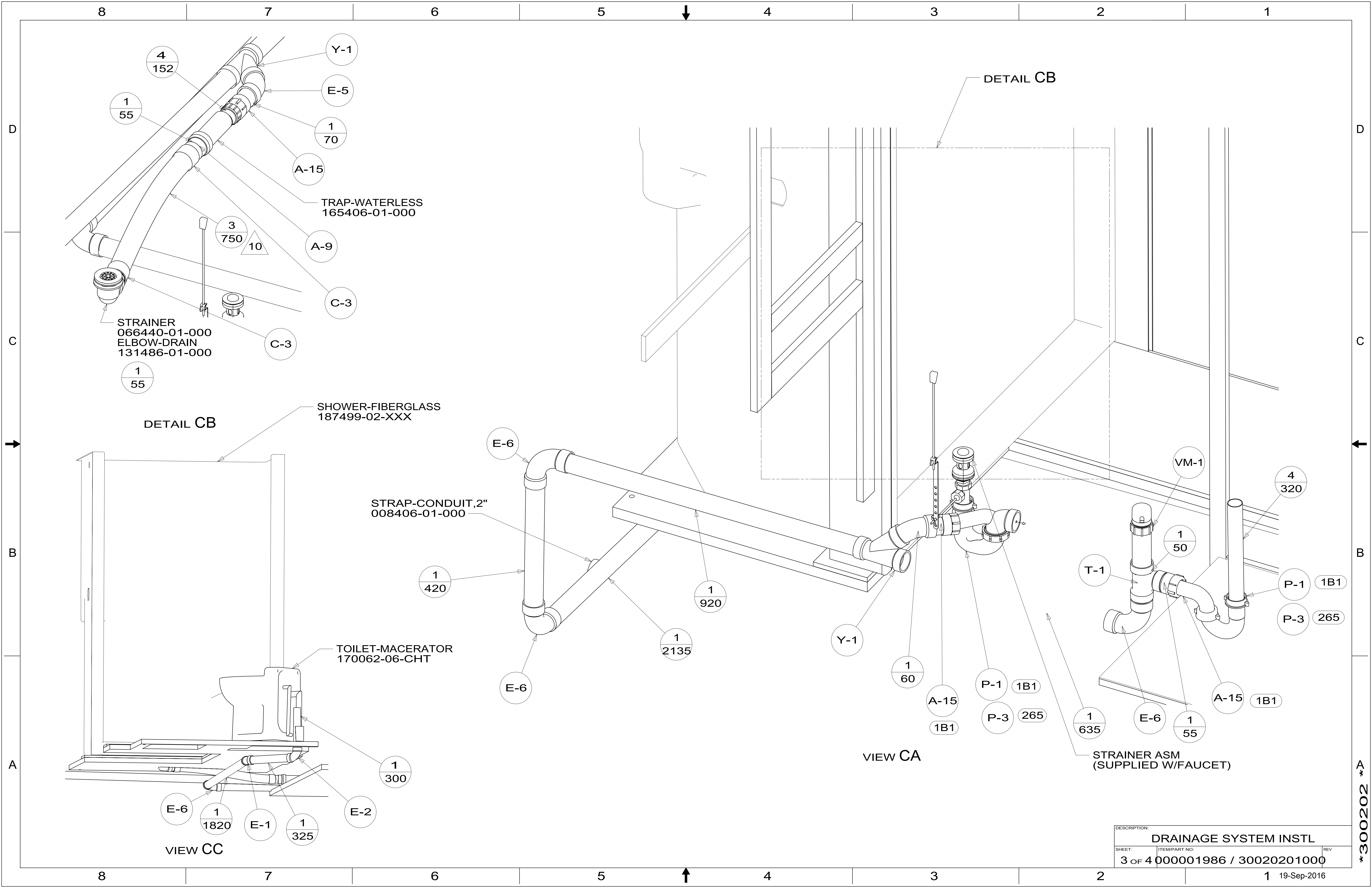
STRAINER ASM-PLASTIC  
106116-01-CHT

SINK-GALLEY  
173783-01-CHT  
STRAINER-SINK  
092303-01-000 (2)

WASTE-CONTINUOUS  
011091-04-000

TOILET  
152830-01-CHT

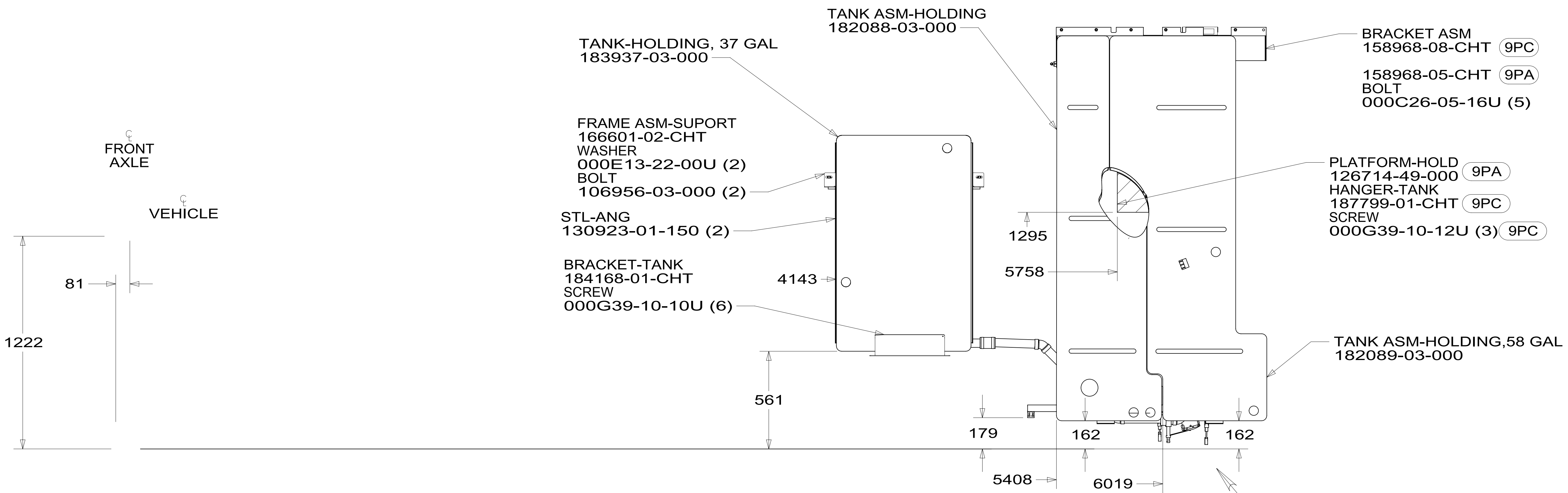
DESCRIPTION:		
<b>DRAINAGE SYSTEM INSTL</b>		
SHEET:	ITEM/PART NO:	REV
2 OF 4	000001986 / 30020201000	



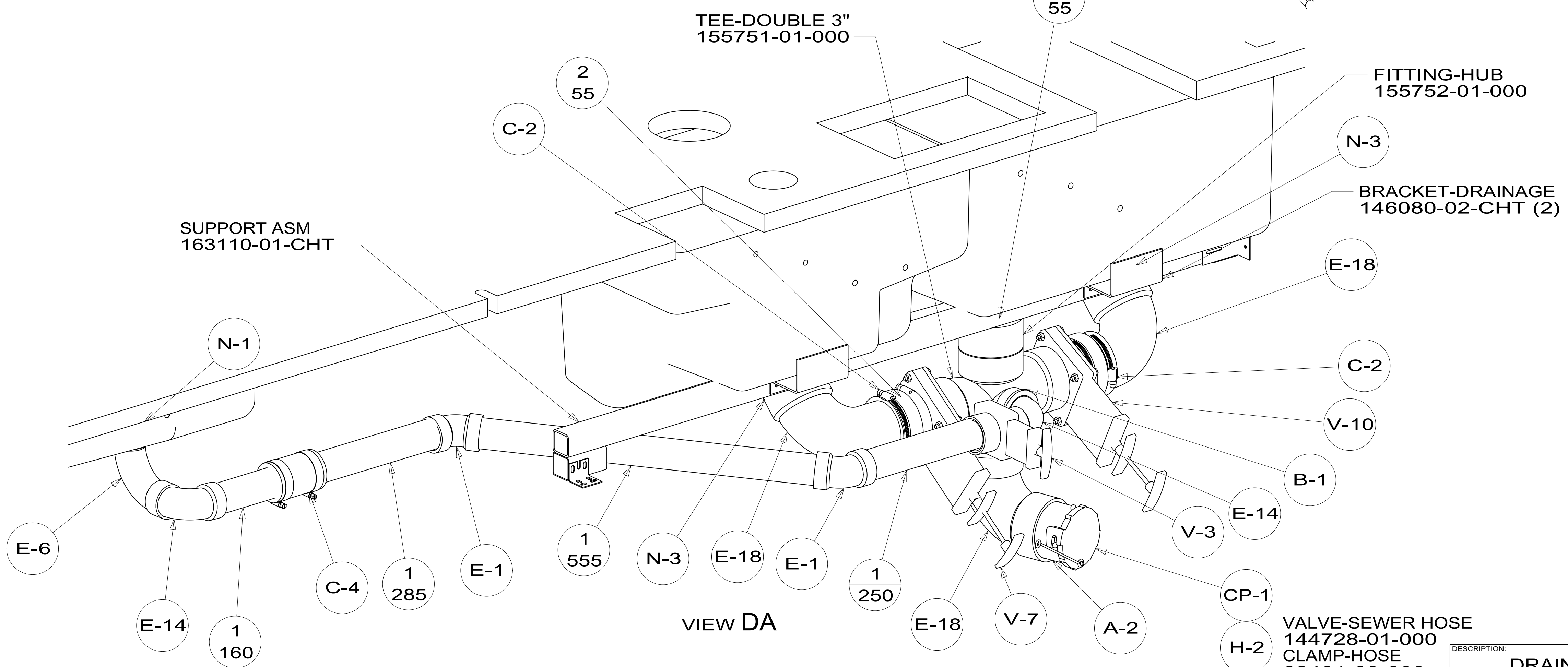
DESCRIPTION:		
DRAINAGE SYSTEM INSTL		
SHEET:	ITEM/PART NO.:	REV
3 OF 4	000001986 / 30020201000	

\*300202\*

8 7 6 5 4 3 2 1



TOP VIEW SHOWING TANKS AND DRAINS



VIEW DA

DESCRIPTION:		
DRAINAGE SYSTEM INSTL		
SHEET:	ITEM/PART NO:	REV
4 OF 4	000001986 / 30020201000	

8 7 6 5 4 3 2 1 19-Sep-2016

\*300202\*