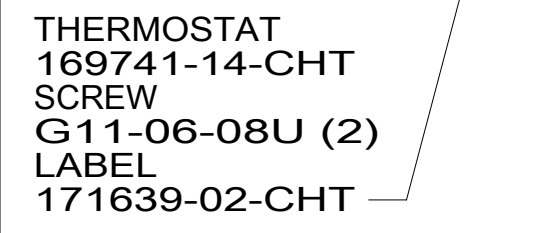
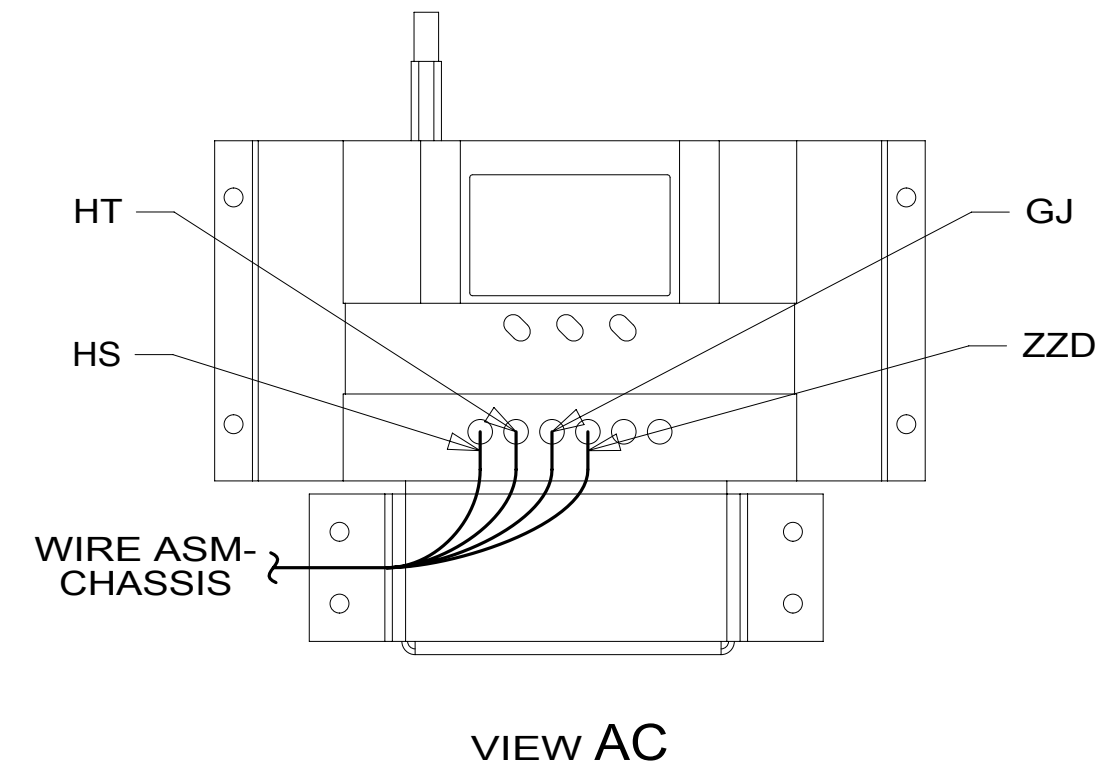
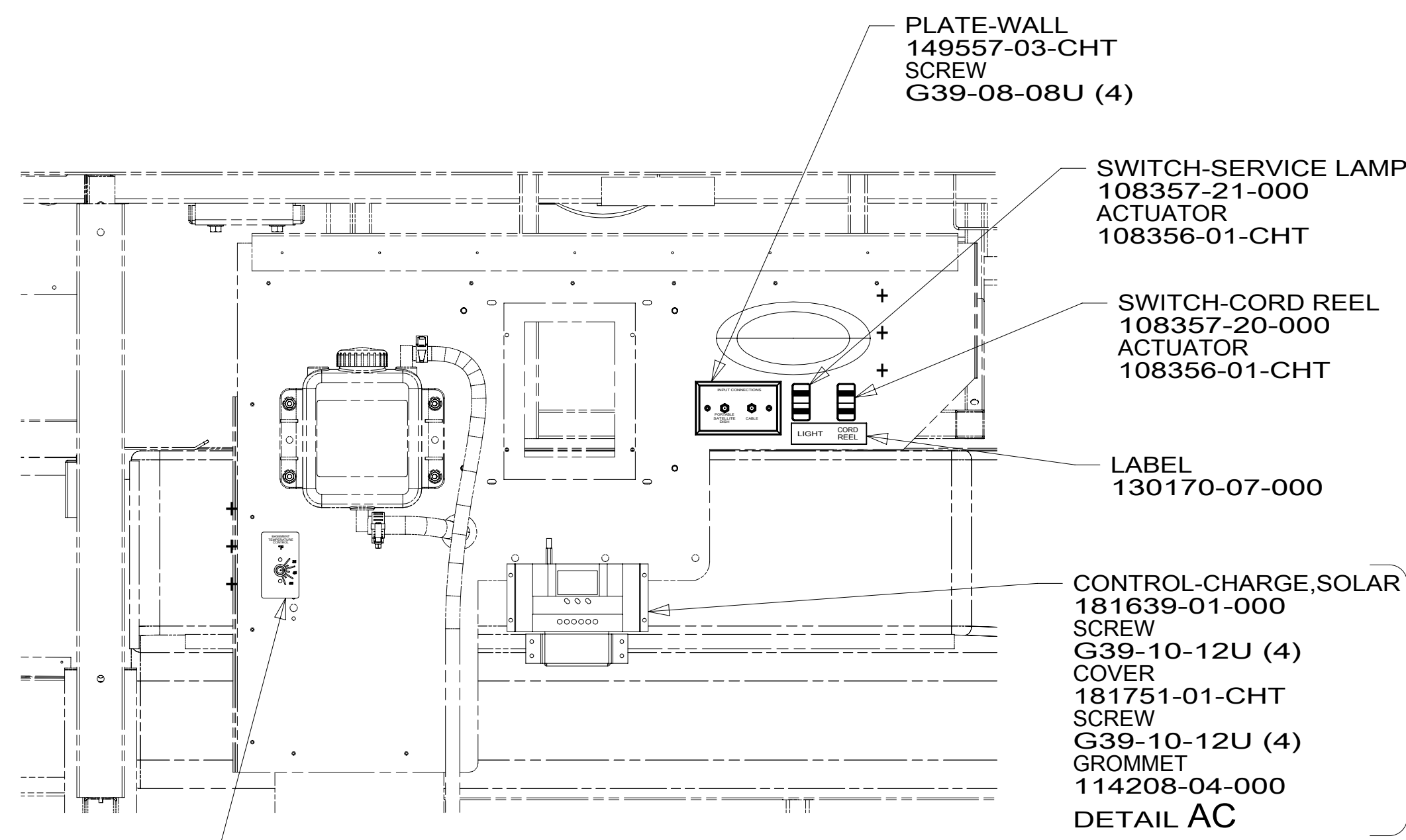
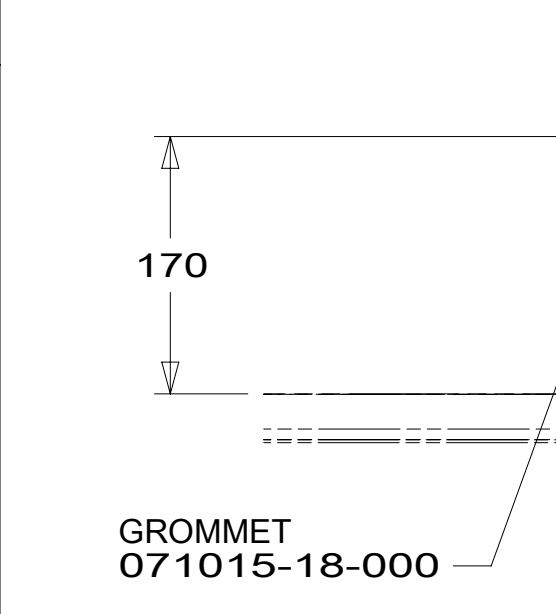


8 7 6 5 4 3 2 1



VIEW AA



DETAIL AB

- NOTES:
1. AT MINIMUM ALL WIRES TO BE SUPPORTED AND SECURED PER CODE REQUIREMENTS. USE CLAMP 10495 OR 10497 OR WIRE TIE 8343 OR 108046 AND SCREW G67-XX-XXX OR G56-XX-XXX AS APPROPRIATE FOR INSTALLATION.
 2. ROUTE TANK SENSOR WIRES SO THEY DO NOT PASS OVER SENSORS. USE WIRE TIE MOUNT 155366-01-000 AND WIRE TIE 8343-01-000 AS NEEDED. TANK SURFACE MUST BE CLEANED USING ISOPROPYL ALCOHOL AND PRIMED WITH PRIMER 94.
 3. ADD CONDUIT TO COVER CAPILLARY TUBE COMPLETELY. CLAMP OR WIRE TIE TO FRAME TUBES.

282

TO CHASSIS CONNECTIONS
WIRE ASM-DIODE
190284-01-000

PLUG-PLASTIC
61420-15-000 (2)

CONTROL-SLIDEOUT, IN-WALL
189400-01-000
HARNESS-SLIDEOUT MOTOR
191661-01-000 (2)

WIRE ASM-AUX HOLDING (GALLEY)
151316-02-000

ZONE 3 THERMOCOUPLE
DETAIL AB

WIRE ASM-MAIN HOLDING
151317-02-000
TOILET-TANK SENSOR
170062-03-000
TOILET-SENSOR HARNESS
170062-05-000

WIRE ASM-AUX HOLDING (BATH)
151316-02-000

TO SLIDEOUT ROOM

BRACKET
185915-01-CHT (4)
SCREW
G39-10-12U (16)

CIRCUITS ZZG & JJU TO AQUA-HOT ASSIST PUMP. CONNECT ZZG TO RED WIRE AND JJU TO BLACK WIRE

WIRE ASM-COACH
000002680 / 310158-01-000

WIRE ASM-TANK, WATER
151317-01-000

LIGHT-LED, ADJUSTABLE
173407-01-CHT CHANNEL-U
185471-01-CHT

SWITCH-ROCKER
135740-01-CHT
SWITCH-FLOOR
187008-01-CHT
SWITCH-CAPS (2)
187009-01-CHT
SCREW
G11-08-08U (2)

CONTROL-SLIDEOUT, IN-WALL
189400-01-000
HARNESS-SLIDEOUT MOTOR
191661-01-000
191661-03-000

BRACKET
185915-01-CHT
SCREW
G39-10-12U (4)

- 9PC TAILGATE PACKAGE
- 9PA TAILGATE PACKAGE WITHOUT
- 282 SOLAR PANEL - 100 WATT
- 265 CODES/STANDARDS-CSA/CMVSS
- 1B1 CODES/STANDARDS USA



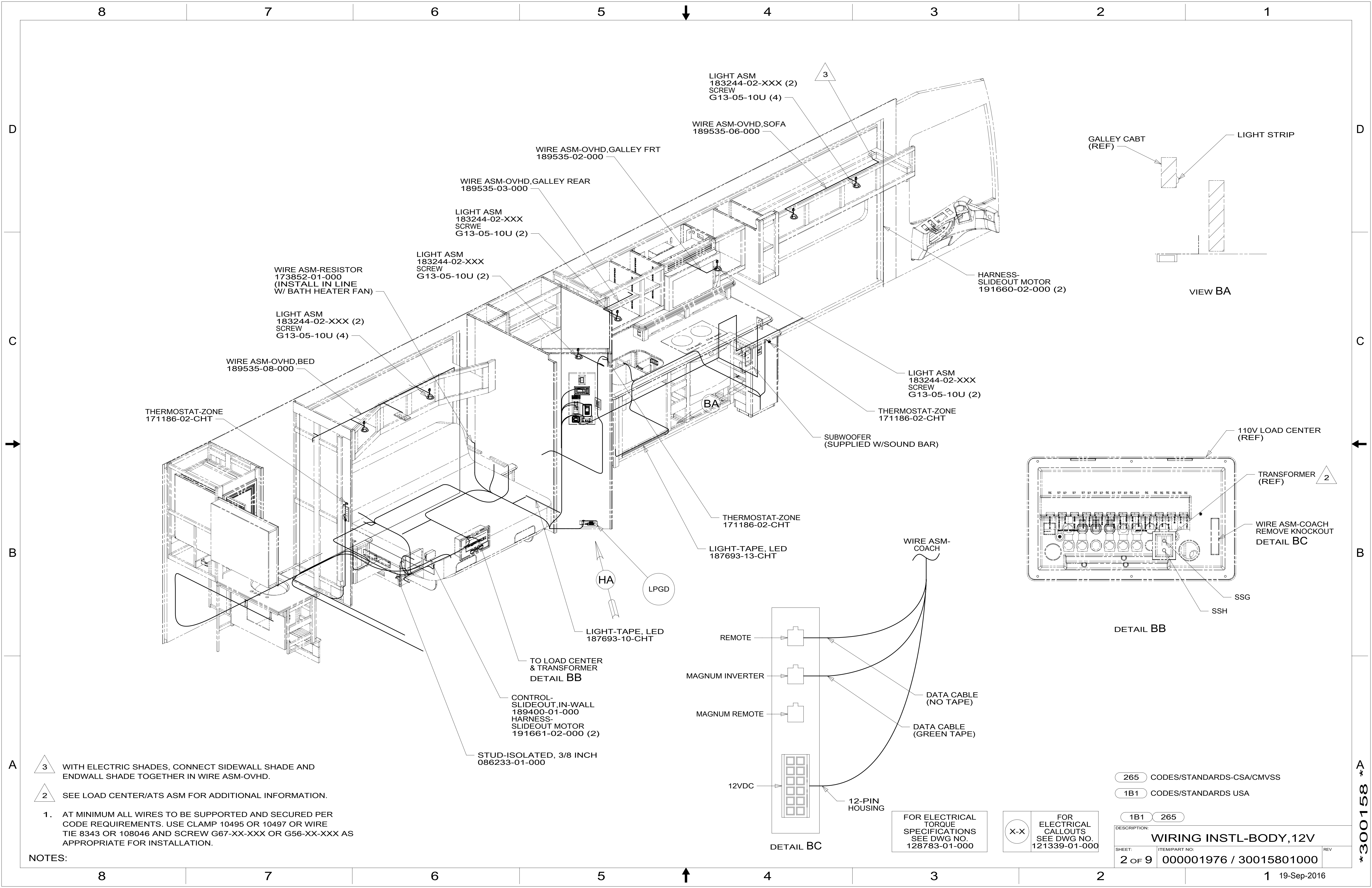
DSNR:		ALL DIMENSIONS ARE IN MILLIMETERS	
DIFFR:		MATERIAL:	
UNSPECIFIED TOLERANCES:			
WHOLE DIM (X)	: 3		
ONE-PLACE (X.X)	: 1.5		
TWO-PLACE (X.XX)	: 0.50		
ANGLE	: 1°		
REFER TO ES0018 FOR FASTENER TIGHTENING GUIDELINES		WEIGHT: (LBS)	FIRST USED:
			16 R42HL
DESCRIPTION: WIRING INSTL-BODY, 12V			
SHEET:	ITEM/PART NO.:	REV:	
1 OF 9	000001976 / 30015801000		

FOR ELECTRICAL TORQUE SPECIFICATIONS SEE DWG NO. 128783-01-000

FOR ELECTRICAL CALLOUTS SEE DWG NO. 121339-01-000

8 7 6 5 4 3 2 1

300158



LIGHT ASM
183244-02-XXX (2)
SCREW
G13-05-10U (4)

WIRE ASM-OVHD,SOFA
189535-06-000

WIRE ASM-OVHD,GALLEY FRT
189535-02-000

WIRE ASM-OVHD,GALLEY REAR
189535-03-000

LIGHT ASM
183244-02-XXX
SCREW
G13-05-10U (2)

LIGHT ASM
183244-02-XXX
SCREW
G13-05-10U (2)

WIRE ASM-RESISTOR
173852-01-000
(INSTALL IN LINE
W/ BATH HEATER FAN)

LIGHT ASM
183244-02-XXX (2)
SCREW
G13-05-10U (4)

WIRE ASM-OVHD,BED
189535-08-000

THERMOSTAT-ZONE
171186-02-CHT

LIGHT ASM
183244-02-XXX
SCREW
G13-05-10U (2)

THERMOSTAT-ZONE
171186-02-CHT

SUBWOOFER
(SUPPLIED W/SOUND BAR)

THERMOSTAT-ZONE
171186-02-CHT

LIGHT-TAPE, LED
187693-13-CHT

HA

LPGD

LIGHT-TAPE, LED
187693-10-CHT

TO LOAD CENTER
& TRANSFORMER
DETAIL BB

CONTROL-
SLIDEOUT,IN-WALL
189400-01-000
HARNESS-
SLIDEOUT MOTOR
191661-02-000 (2)

STUD-ISOLATED, 3/8 INCH
086233-01-000

GALLEY CABT
(REF)

LIGHT STRIP

VIEW BA

HARNESS-
SLIDEOUT MOTOR
191660-02-000 (2)

110V LOAD CENTER
(REF)

TRANSFORMER
(REF)

WIRE ASM-COACH
REMOVE KNOCKOUT
DETAIL BC

SSG

SSH

DETAIL BB

REMOTE

MAGNUM INVERTER

MAGNUM REMOTE

12VDC

12-PIN
HOUSING

DATA CABLE
(NO TAPE)

DATA CABLE
(GREEN TAPE)

DETAIL BC

FOR ELECTRICAL
TORQUE
SPECIFICATIONS
SEE DWG NO.
128783-01-000

FOR ELECTRICAL
CALLOUTS
SEE DWG NO.
121339-01-000

265 CODES/STANDARDS-CSA/CMVSS

1B1 CODES/STANDARDS USA

1B1 265

DESCRIPTION:
WIRING INSTL-BODY, 12V

SHEET: 2 OF 9 ITEM/PART NO: 000001976 / 30015801000 REV

- NOTES:
- 3 WITH ELECTRIC SHADES, CONNECT SIDEWALL SHADE AND ENDWALL SHADE TOGETHER IN WIRE ASM-OVHD.
 - 2 SEE LOAD CENTER/ATS ASM FOR ADDITIONAL INFORMATION.
 - 1. AT MINIMUM ALL WIRES TO BE SUPPORTED AND SECURED PER CODE REQUIREMENTS. USE CLAMP 10495 OR 10497 OR WIRE TIE 8343 OR 108046 AND SCREW G67-XX-XXX OR G56-XX-XXX AS APPROPRIATE FOR INSTALLATION.

300158

8 7 6 5 4 3 2 1

D

C

B

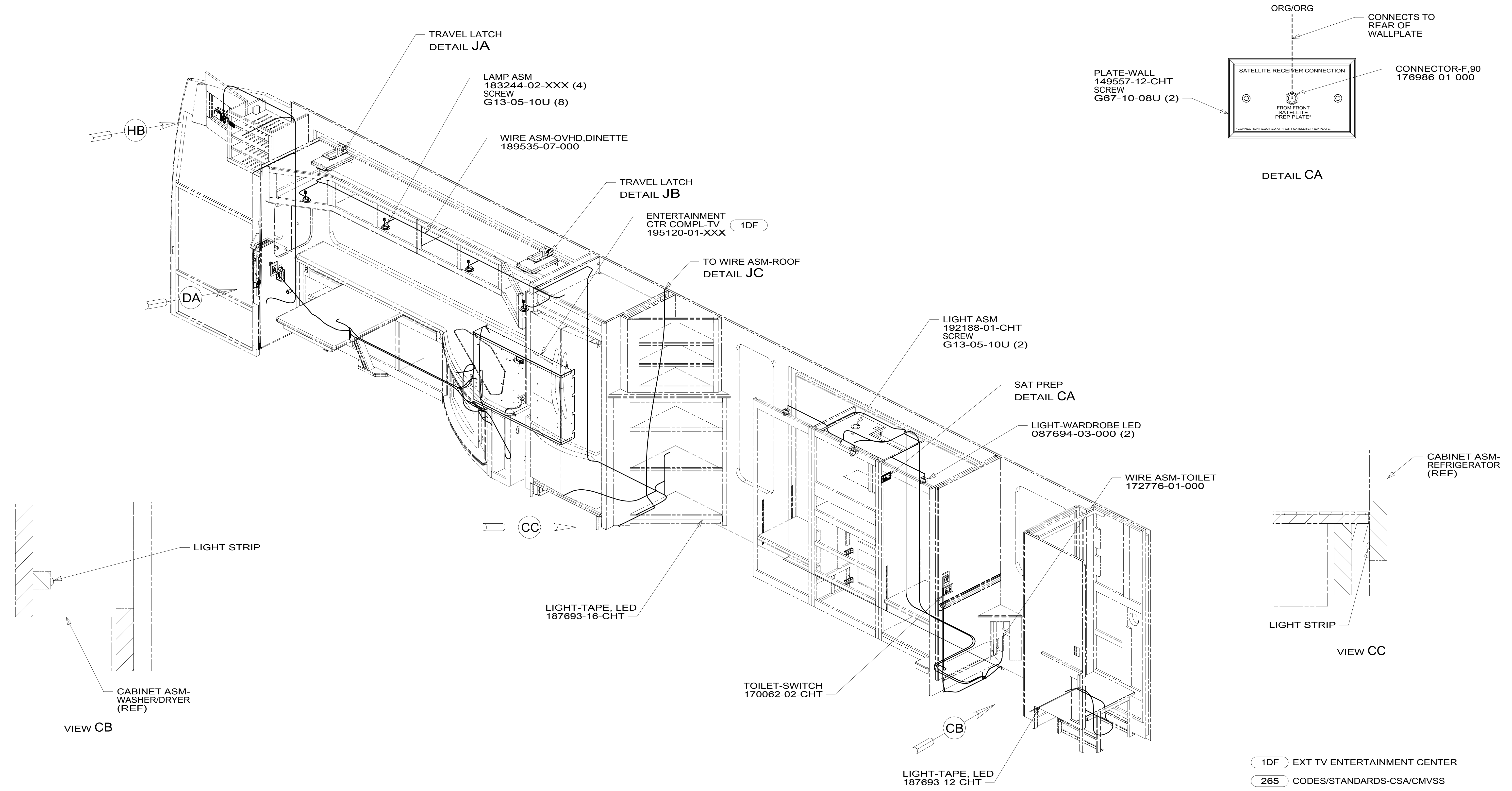
A

D

C

B

A



1. AT MINIMUM ALL WIRES TO BE SUPPORTED AND SECURED PER CODE REQUIREMENTS. USE CLAMP 10495 OR 10497 OR WIRE TIE 8343 OR 108046 AND SCREW G67-XX-XXX OR G56-XX-XXX AS APPROPRIATE FOR INSTALLATION.

NOTES:

FOR ELECTRICAL TORQUE SPECIFICATIONS SEE DWG NO. 128783-01-000

FOR ELECTRICAL CALLOUTS SEE DWG NO. 121339-01-000

- 1DF EXT TV ENTERTAINMENT CENTER
- 265 CODES/STANDARDS-CSA/CMVSS
- 1B1 CODES/STANDARDS USA

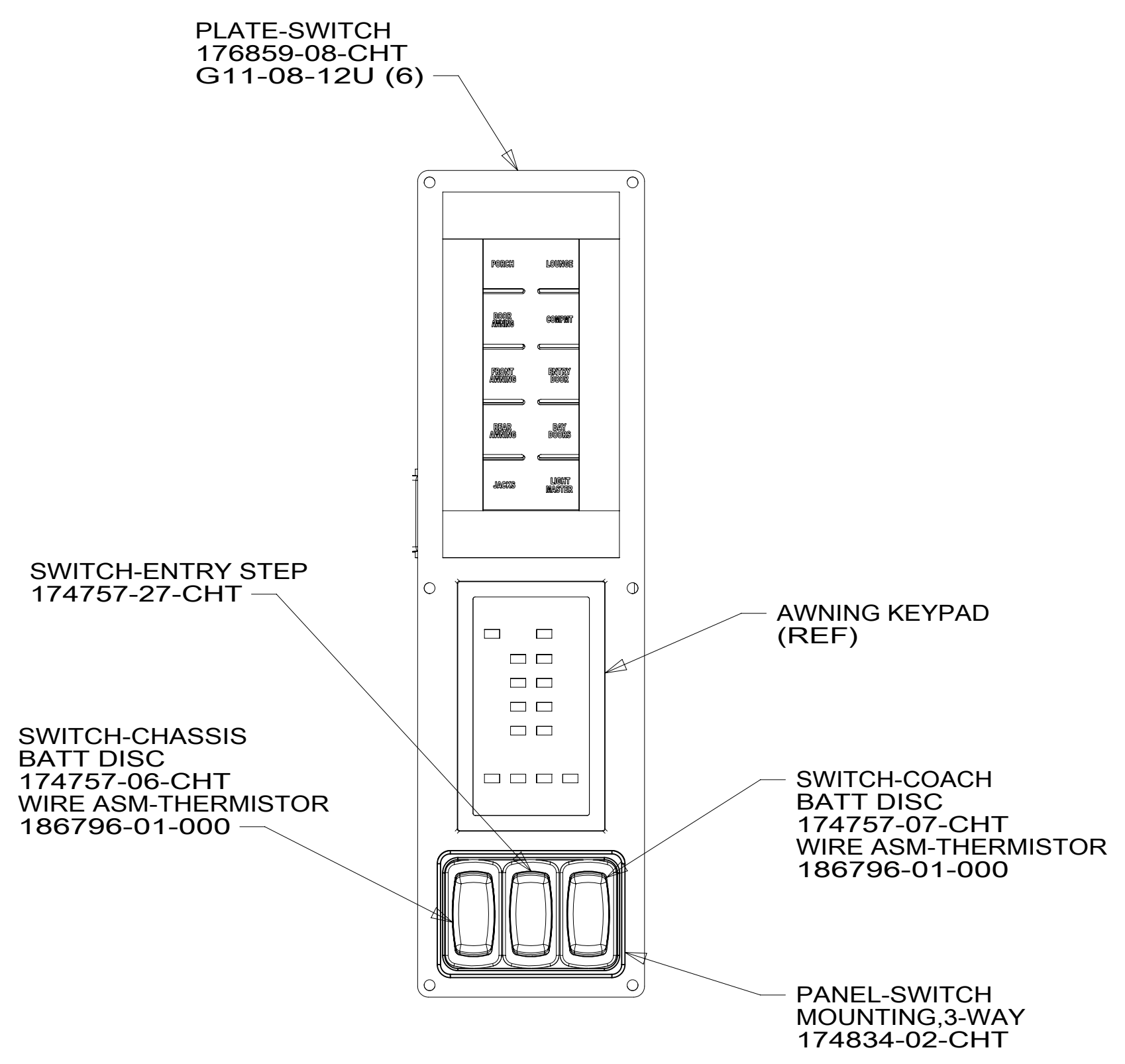
DESCRIPTION:		
WIRING INSTL-BODY, 12V		
SHEET:	ITEM/PART NO.:	REV:
3 OF 9	000001976 / 30015801000	

300158

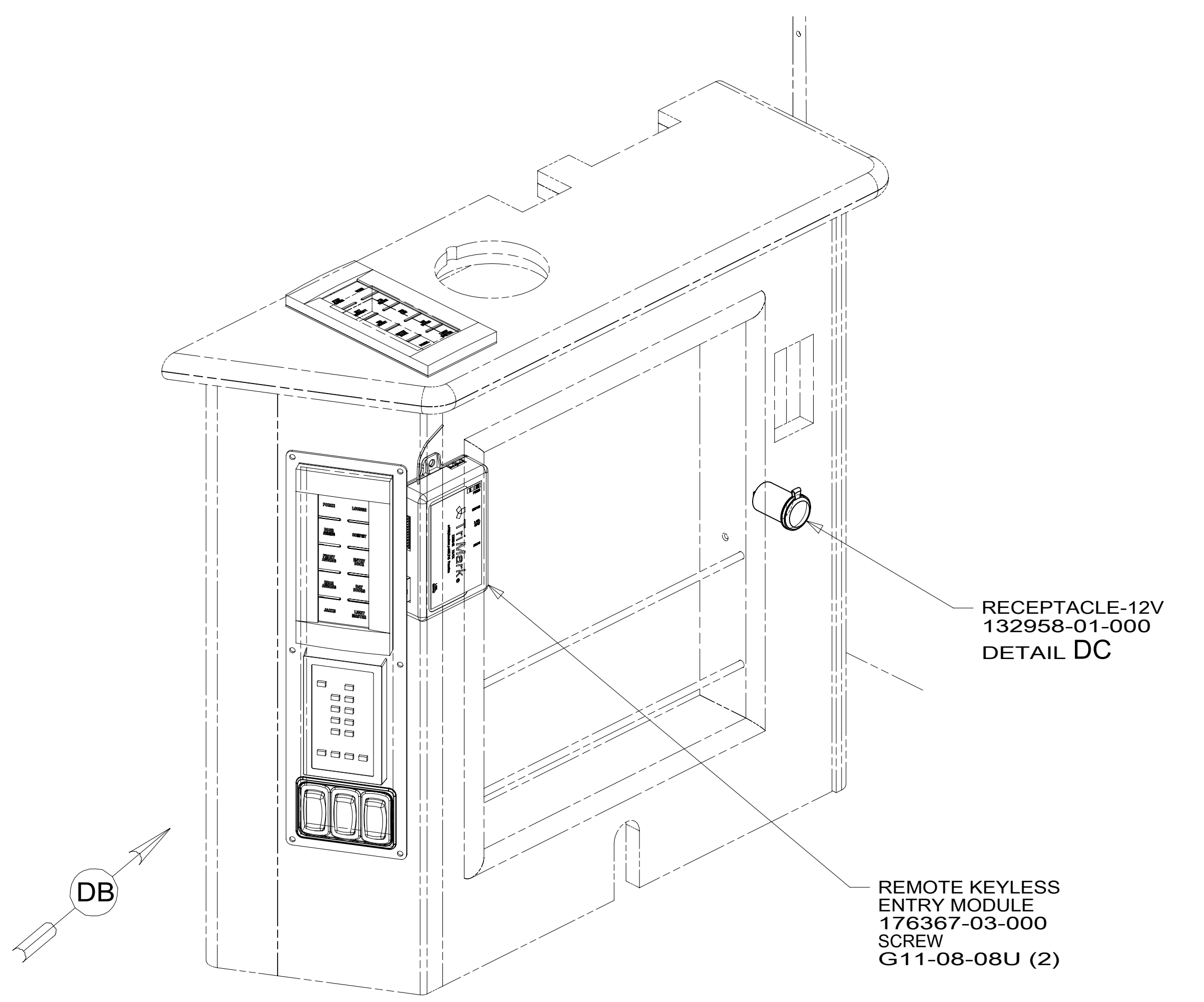
8 7 6 5 4 3 2 1 19-Sep-2016

8 7 6 5 4 3 2 1

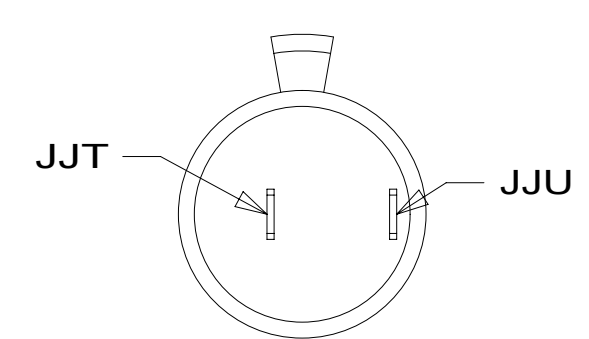
D
C
B
A



DETAIL DB



DETAIL DA



DETAIL DC

NOTES:

1. AT MINIMUM ALL WIRES TO BE SUPPORTED AND SECURED PER CODE REQUIREMENTS. USE CLAMP 10495 OR 10497 OR WIRE TIE 8343 OR 108046 AND SCREW G67-XX-XXX OR G56-XX-XXX AS APPROPRIATE FOR INSTALLATION.

FOR ELECTRICAL TORQUE SPECIFICATIONS SEE DWG NO. 128783-01-000

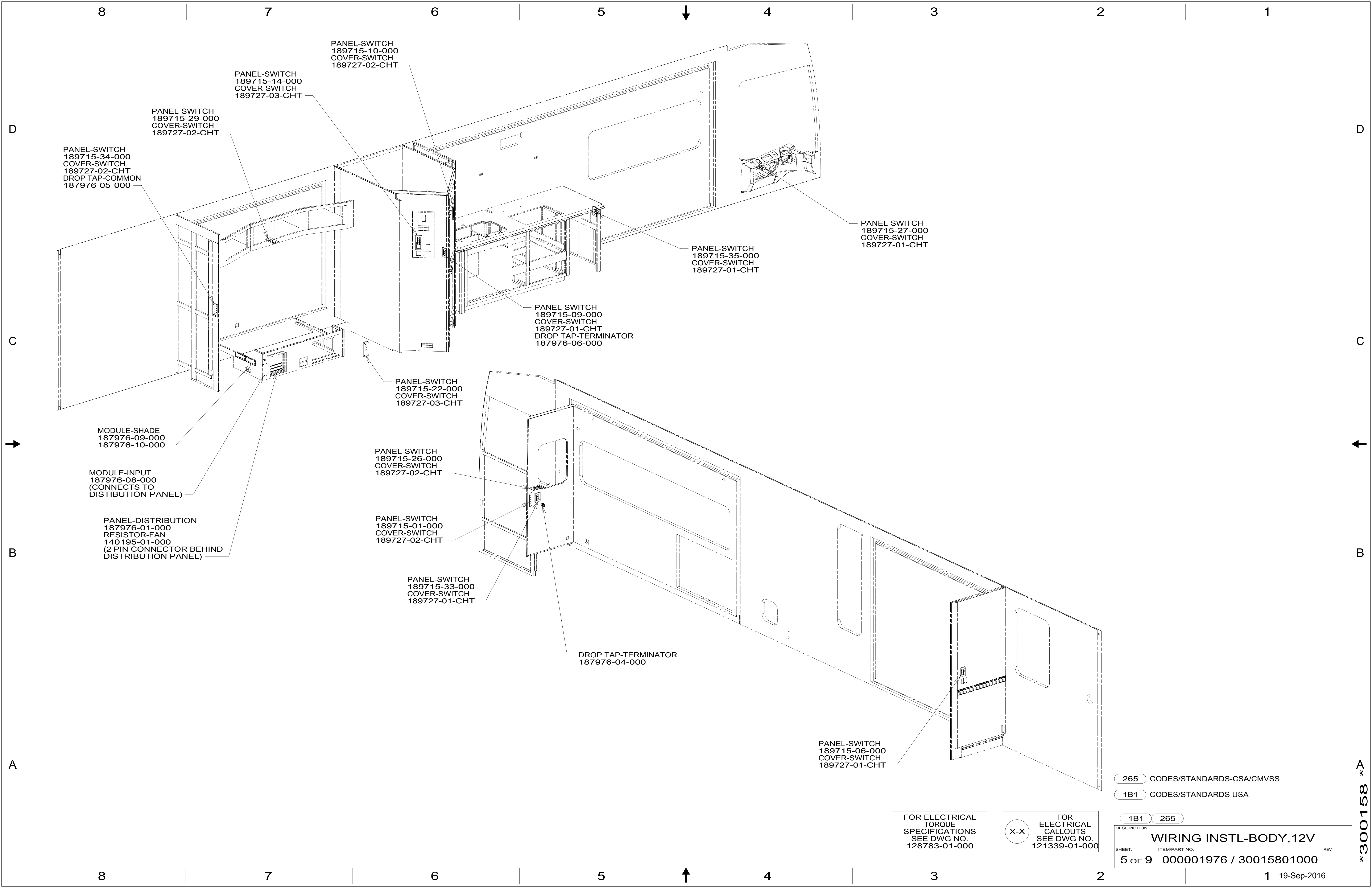
FOR ELECTRICAL CALLOUTS SEE DWG NO. 121339-01-000

265 CODES/STANDARDS-CSA/CMVSS
1B1 CODES/STANDARDS USA

DESCRIPTION: WIRING INSTL-BODY, 12V	
SHEET: 4 OF 9	ITEM/PART NO: 000001976 / 30015801000
REV	

8 7 6 5 4 3 2 1 19-Sep-2016

*300158 *A



PANEL-SWITCH
189715-34-000
COVER-SWITCH
189727-02-CHT
DROP TAP-COMMON
187976-05-000

PANEL-SWITCH
189715-29-000
COVER-SWITCH
189727-02-CHT

PANEL-SWITCH
189715-14-000
COVER-SWITCH
189727-03-CHT

PANEL-SWITCH
189715-10-000
COVER-SWITCH
189727-02-CHT

MODULE-SHADE
187976-09-000
187976-10-000

MODULE-INPUT
187976-08-000
(CONNECTS TO
DISTRIBUTION PANEL)

PANEL-DISTRIBUTION
187976-01-000
RESISTOR-FAN
140195-01-000
(2 PIN CONNECTOR BEHIND
DISTRIBUTION PANEL)

PANEL-SWITCH
189715-22-000
COVER-SWITCH
189727-03-CHT

PANEL-SWITCH
189715-26-000
COVER-SWITCH
189727-02-CHT

PANEL-SWITCH
189715-01-000
COVER-SWITCH
189727-02-CHT

PANEL-SWITCH
189715-33-000
COVER-SWITCH
189727-01-CHT

DROP TAP-TERMINATOR
187976-04-000

PANEL-SWITCH
189715-35-000
COVER-SWITCH
189727-01-CHT

PANEL-SWITCH
189715-27-000
COVER-SWITCH
189727-01-CHT

PANEL-SWITCH
189715-06-000
COVER-SWITCH
189727-01-CHT

265 CODES/STANDARDS-CSA/CMVSS
1B1 CODES/STANDARDS USA

FOR ELECTRICAL
TORQUE
SPECIFICATIONS
SEE DWG NO.
128783-01-000

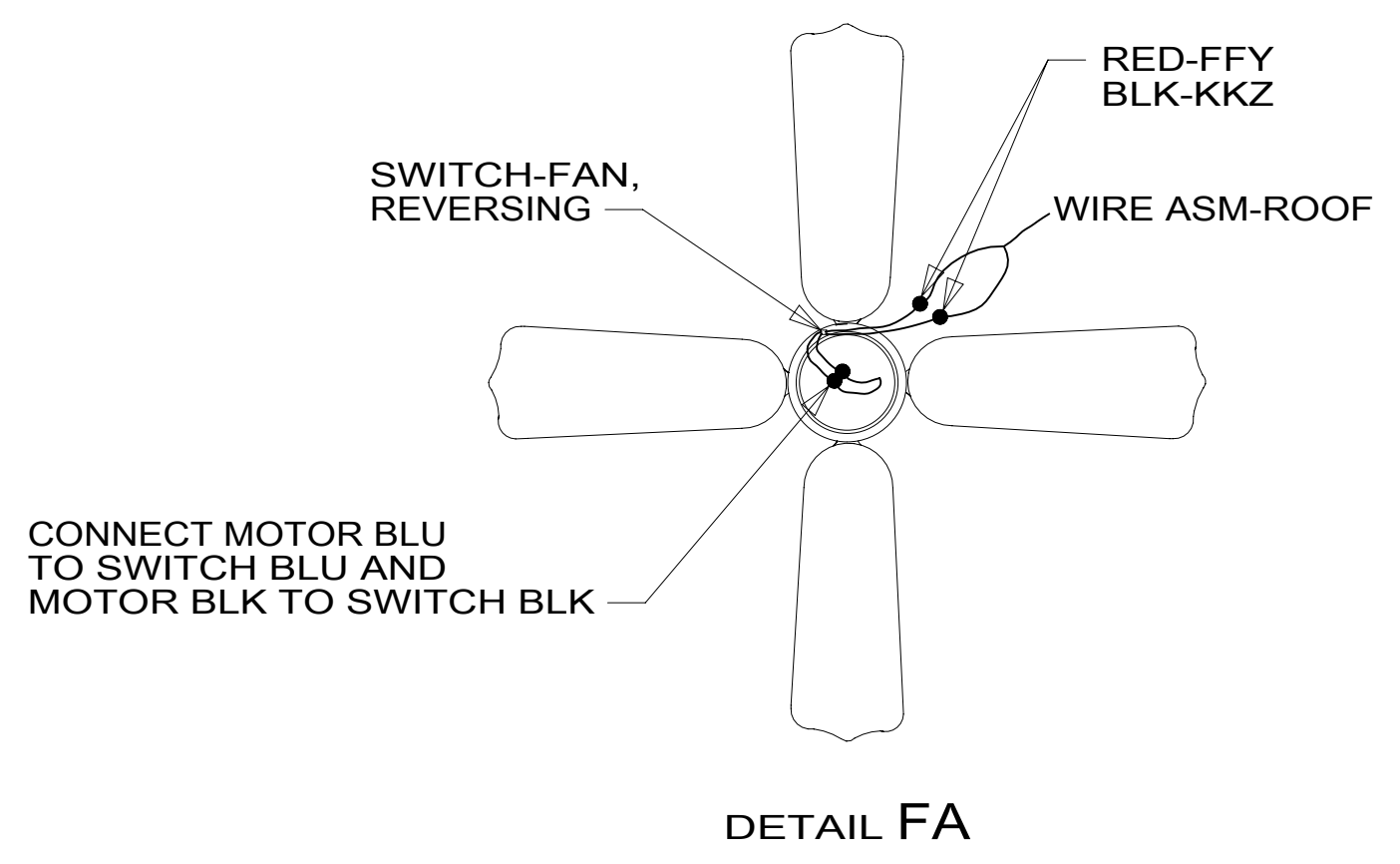
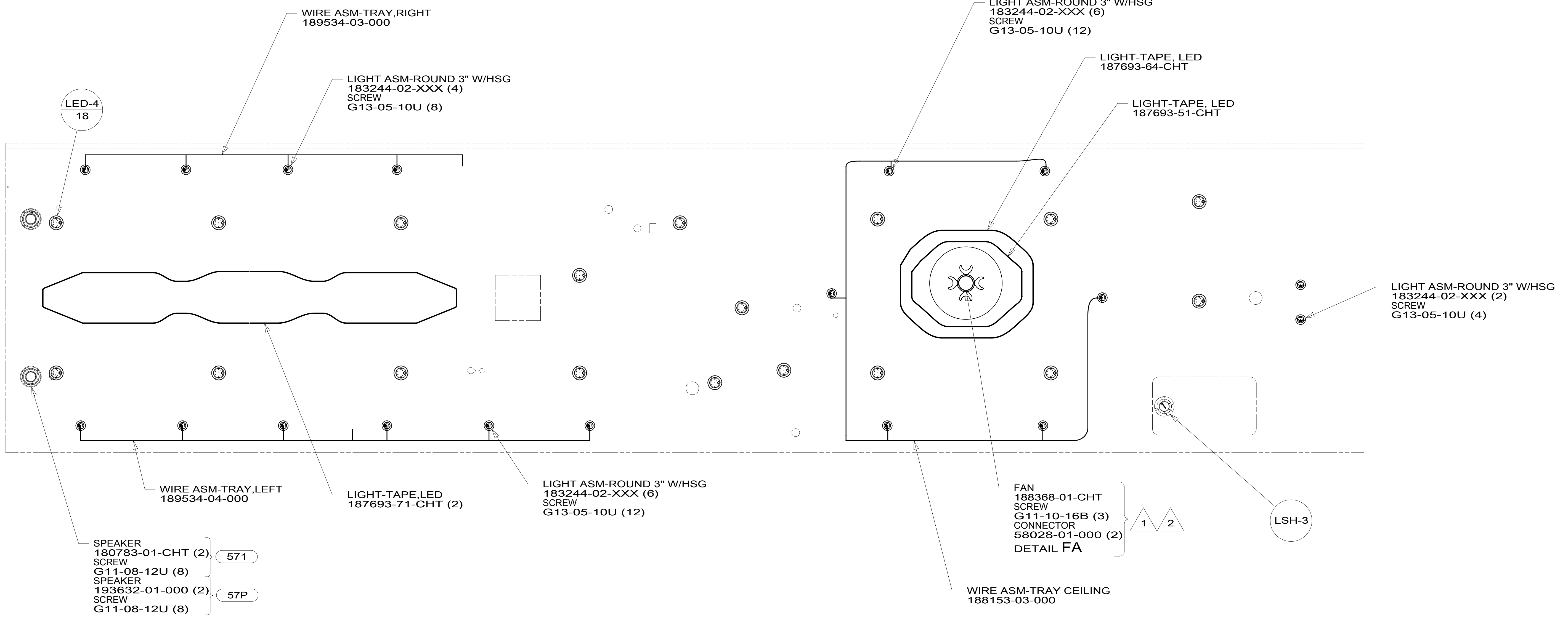
FOR
ELECTRICAL
CALLOUTS
SEE DWG NO.
121339-01-000

DESCRIPTION:		1B1 265	
WIRING INSTL-BODY, 12V			
SHEET:	ITEM/PART NO.:	REV	
5 OF 9	000001976 / 30015801000		

300158

8 7 6 5 4 3 2 1

D
C
B
A



- NOTES:
- 2 CENTER FAN OVER 25MM HOLE IN ROOF.
 - 1 APPLY LOCTITE P/N 62917-06-000 TO FAN BLADE MOUNTING NUT THREADS.

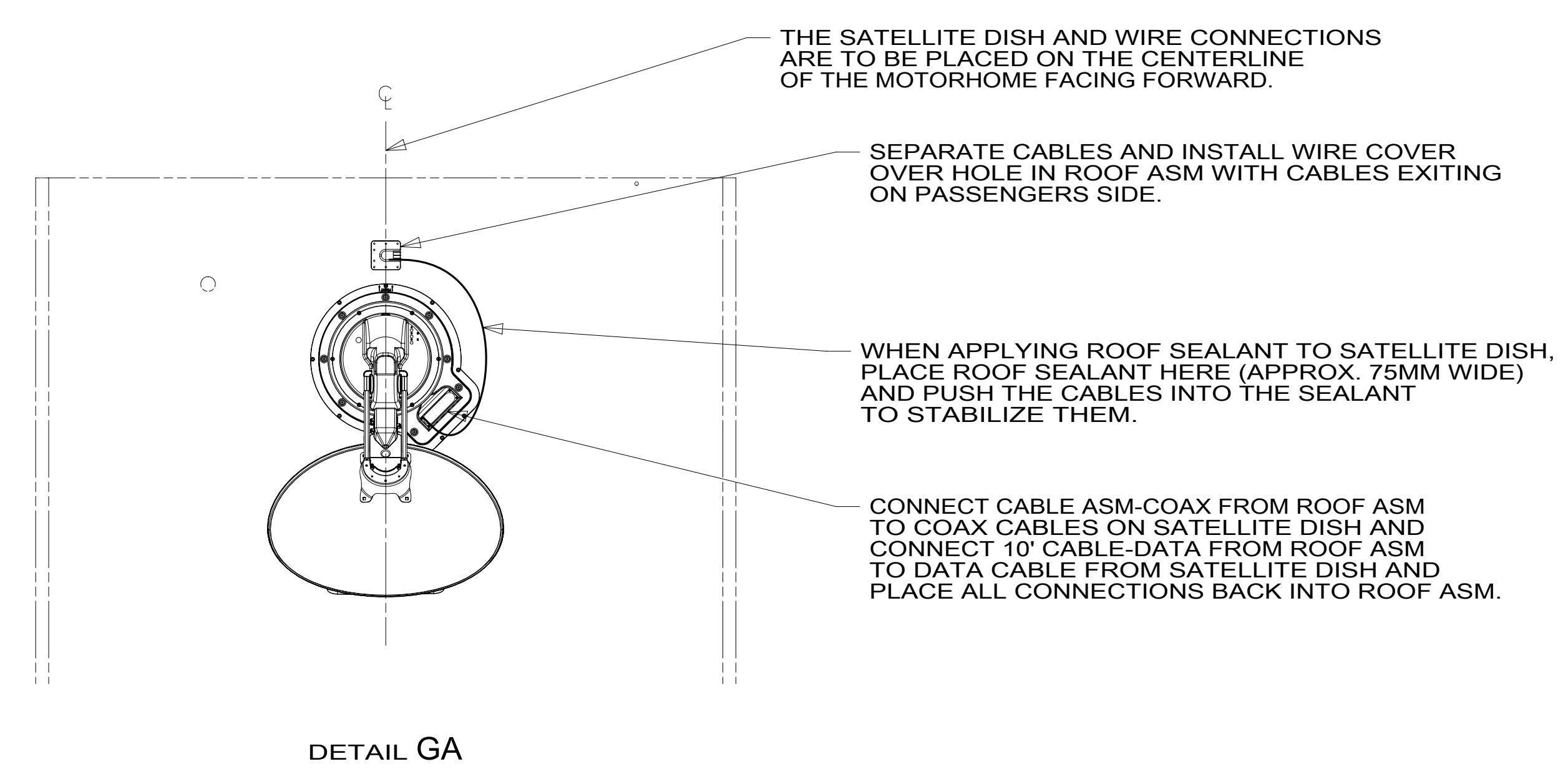
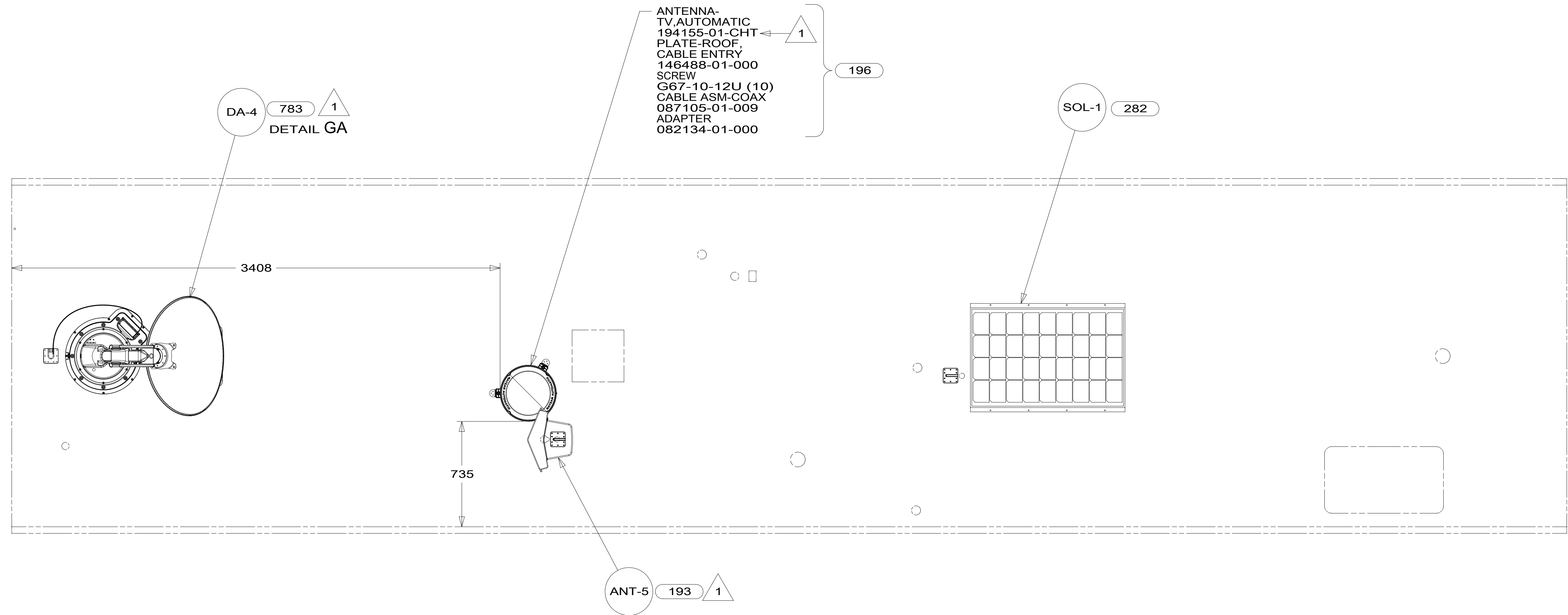
FOR ELECTRICAL TORQUE SPECIFICATIONS SEE DWG NO. 128783-01-000

FOR ELECTRICAL CALLOUTS SEE DWG NO. 121339-01-000

- 57P RADIO SPEAKERS-PREMIUM SOUND
- 571 RADIO SPEAKERS
- 265 CODES/STANDARDS-CSA/CMVSS
- 1B1 CODES/STANDARDS USA

DESCRIPTION: WIRING INSTL-BODY, 12V		
SHEET: 6 OF 9	ITEM/PART NO: 000001976 / 30015801000	REV

*300158 *A



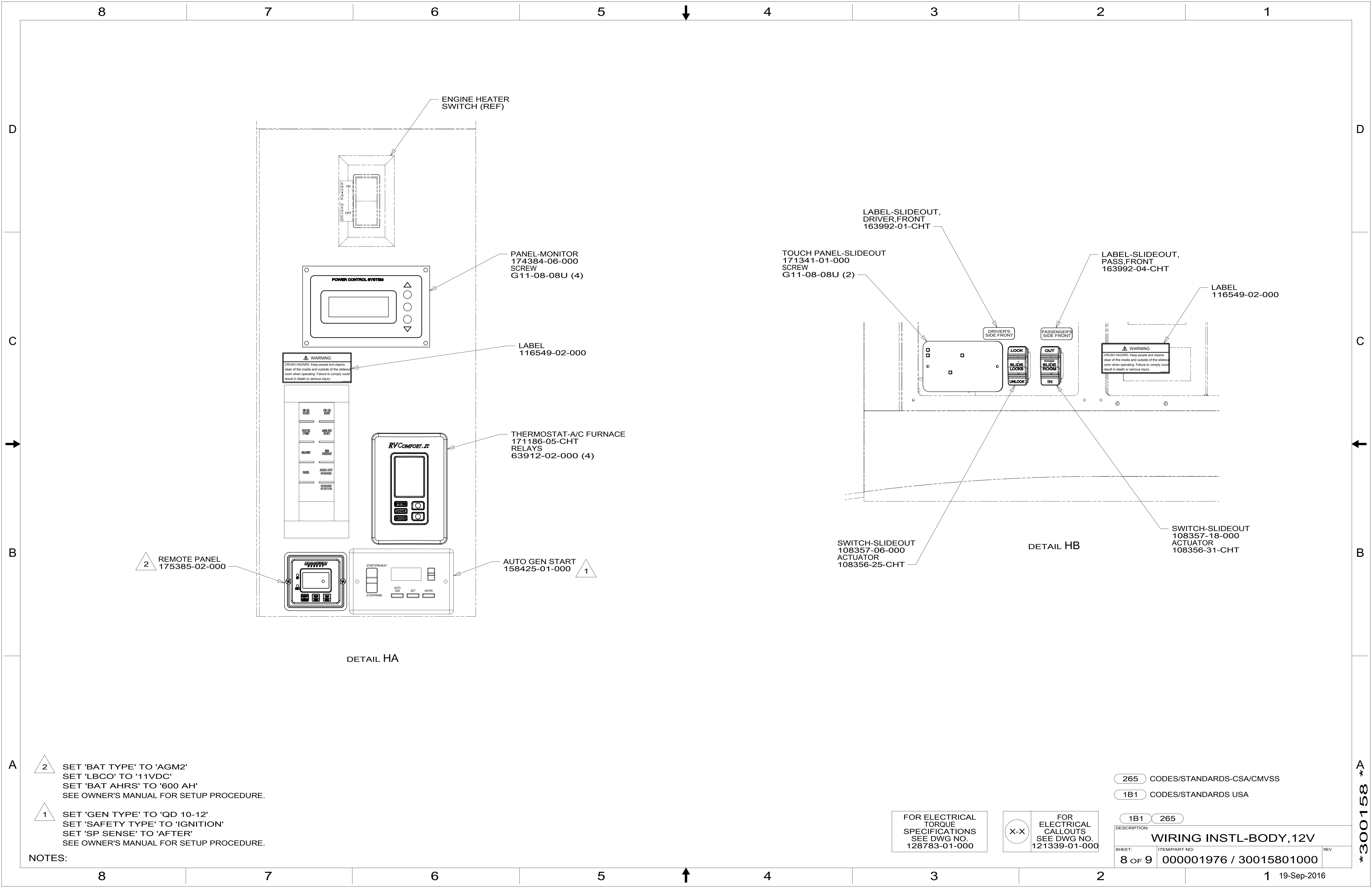
- 196 TV ANT-AUTO,DIRECTIONAL AMPL
- 193 TV ANT-DIGITAL AMPLIFIED
- 783 SATELLITE HD TV SYSTEM AUTOC
- 282 SOLAR PANEL - 100 WATT
- 265 CODES/STANDARDS-CSA/CMVSS
- 1B1 CODES/STANDARDS USA

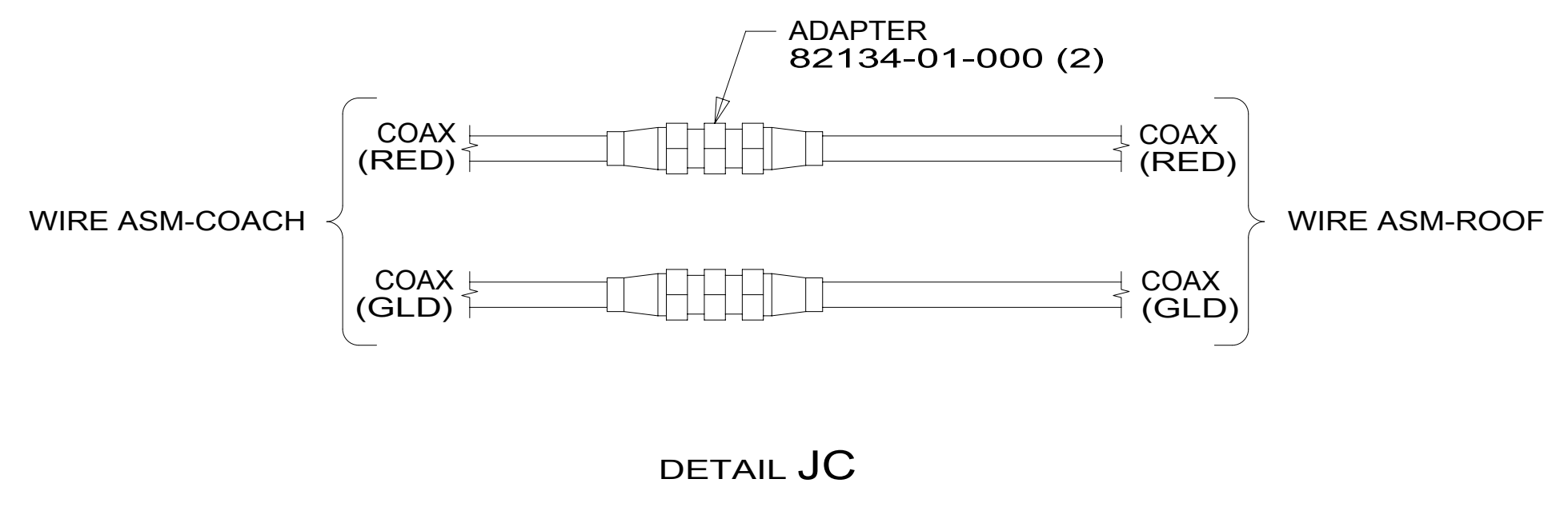
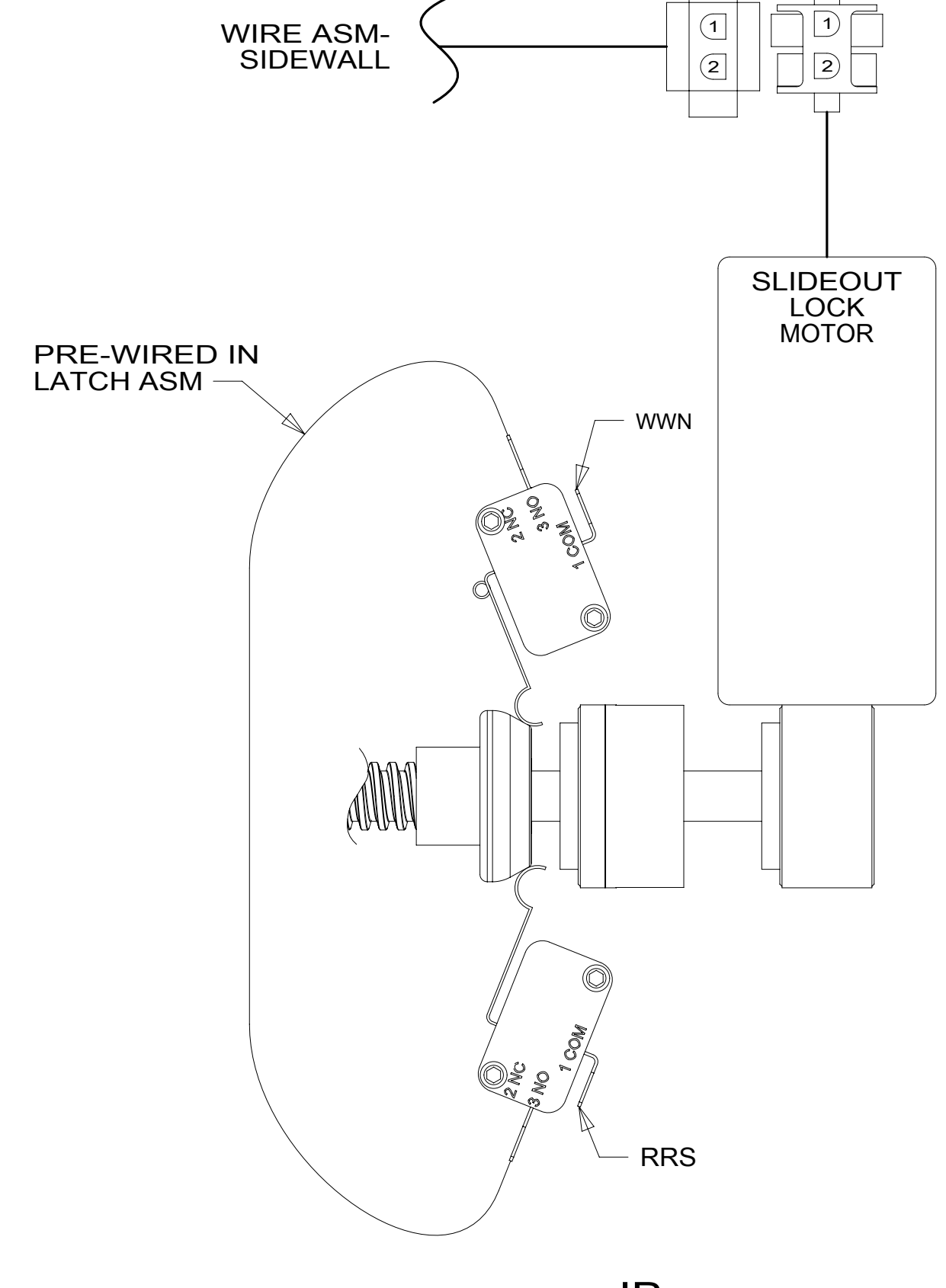
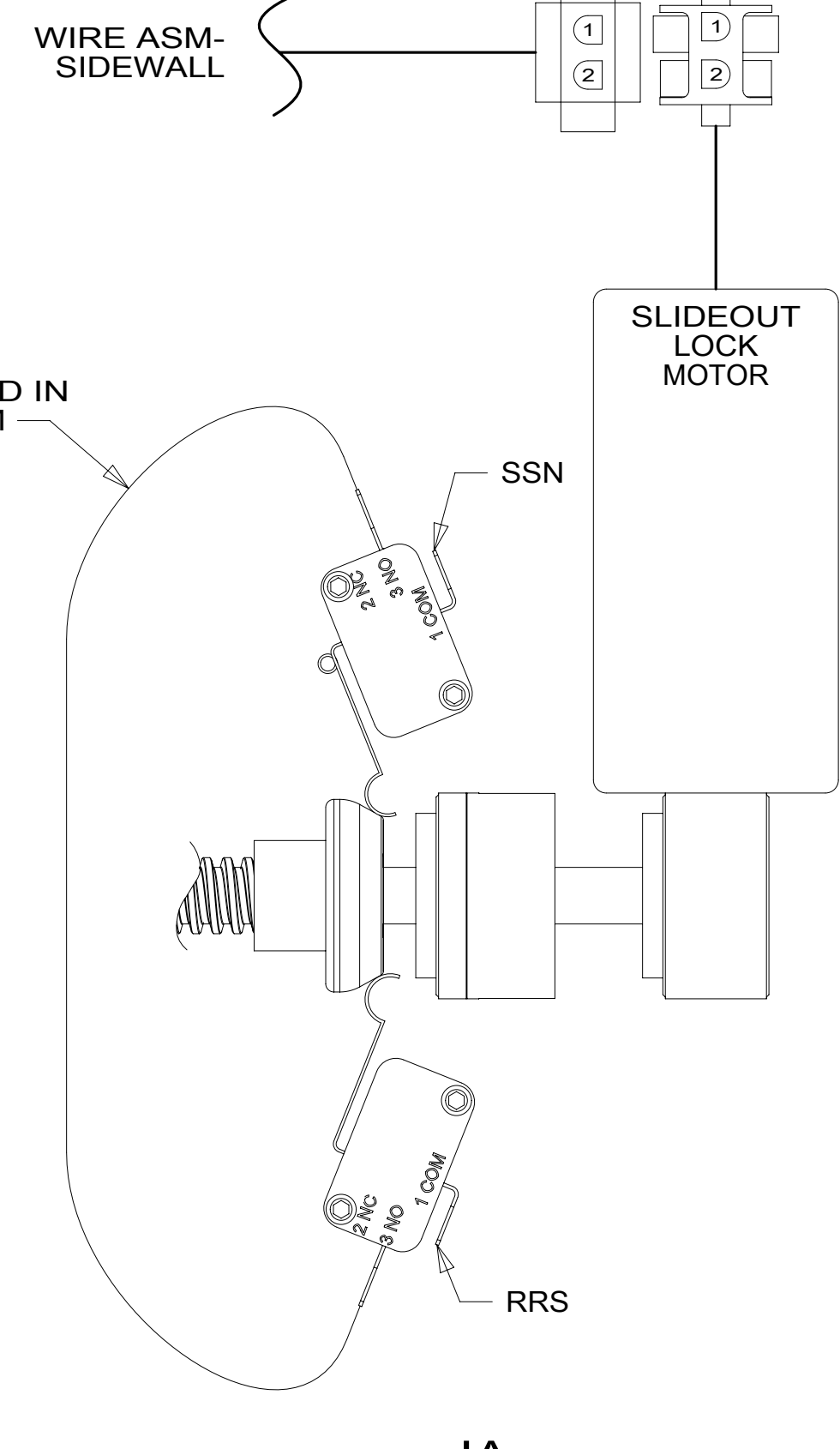
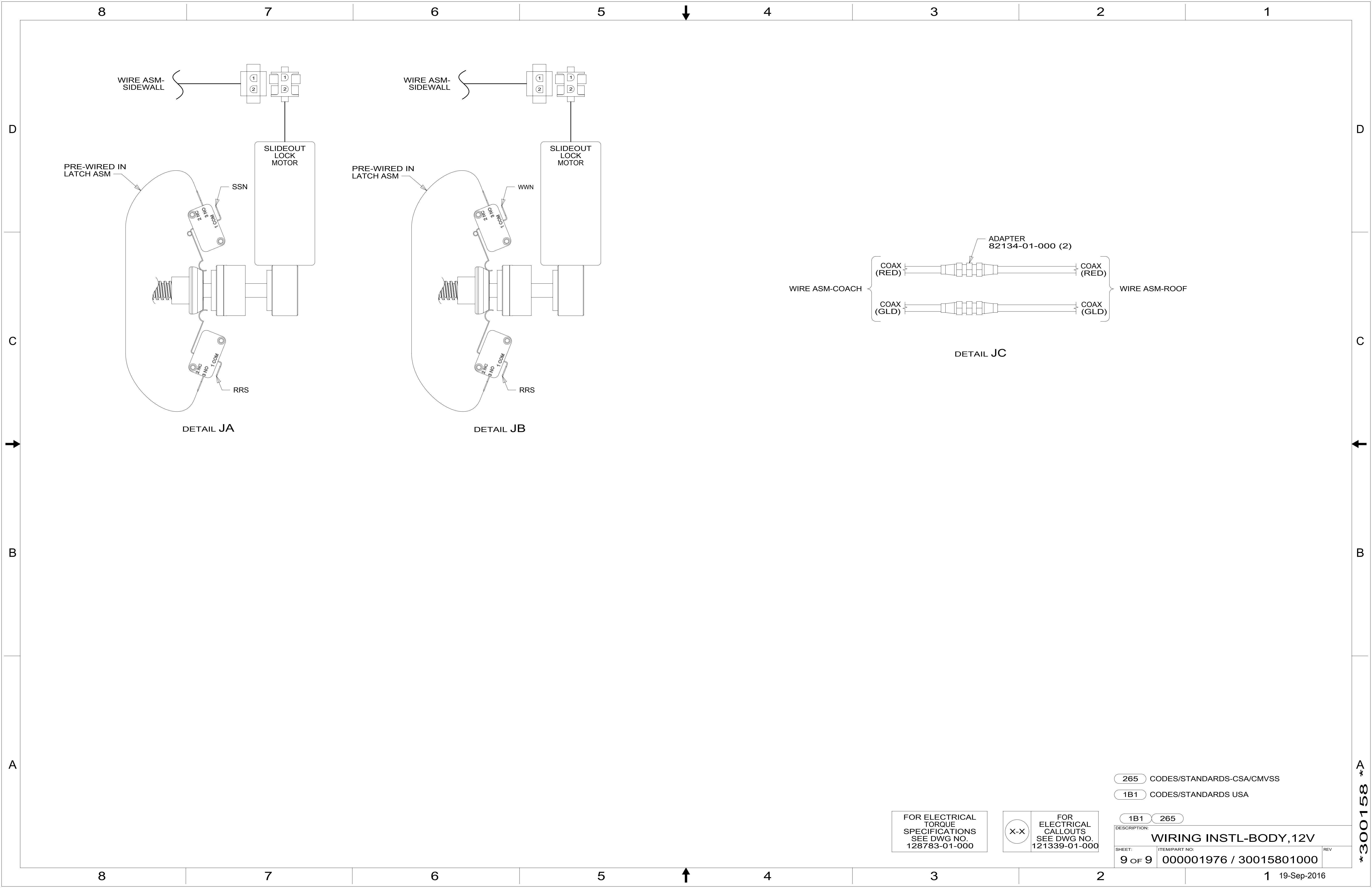
1 SEE MANUFACTURER'S INSTALLATION FOR ADDITIONAL INFORMATION.

FOR ELECTRICAL TORQUE SPECIFICATIONS SEE DWG NO. 128783-01-000

FOR ELECTRICAL CALLOUTS SEE DWG NO. 121339-01-000

DESCRIPTION:	1B1 265	
WIRING INSTL-BODY, 12V		
SHEET:	ITEM/PART NO:	REV
7 OF 9	000001976 / 30015801000	





265 CODES/STANDARDS-CSA/CMVSS
 1B1 CODES/STANDARDS USA

FOR ELECTRICAL TORQUE SPECIFICATIONS SEE DWG NO. 128783-01-000

FOR ELECTRICAL CALLOUTS SEE DWG NO. 121339-01-000

DESCRIPTION: WIRING INSTL-BODY, 12V		
SHEET: 9 OF 9	ITEM/PART NO: 000001976 / 30015801000	REV

*300158 *A