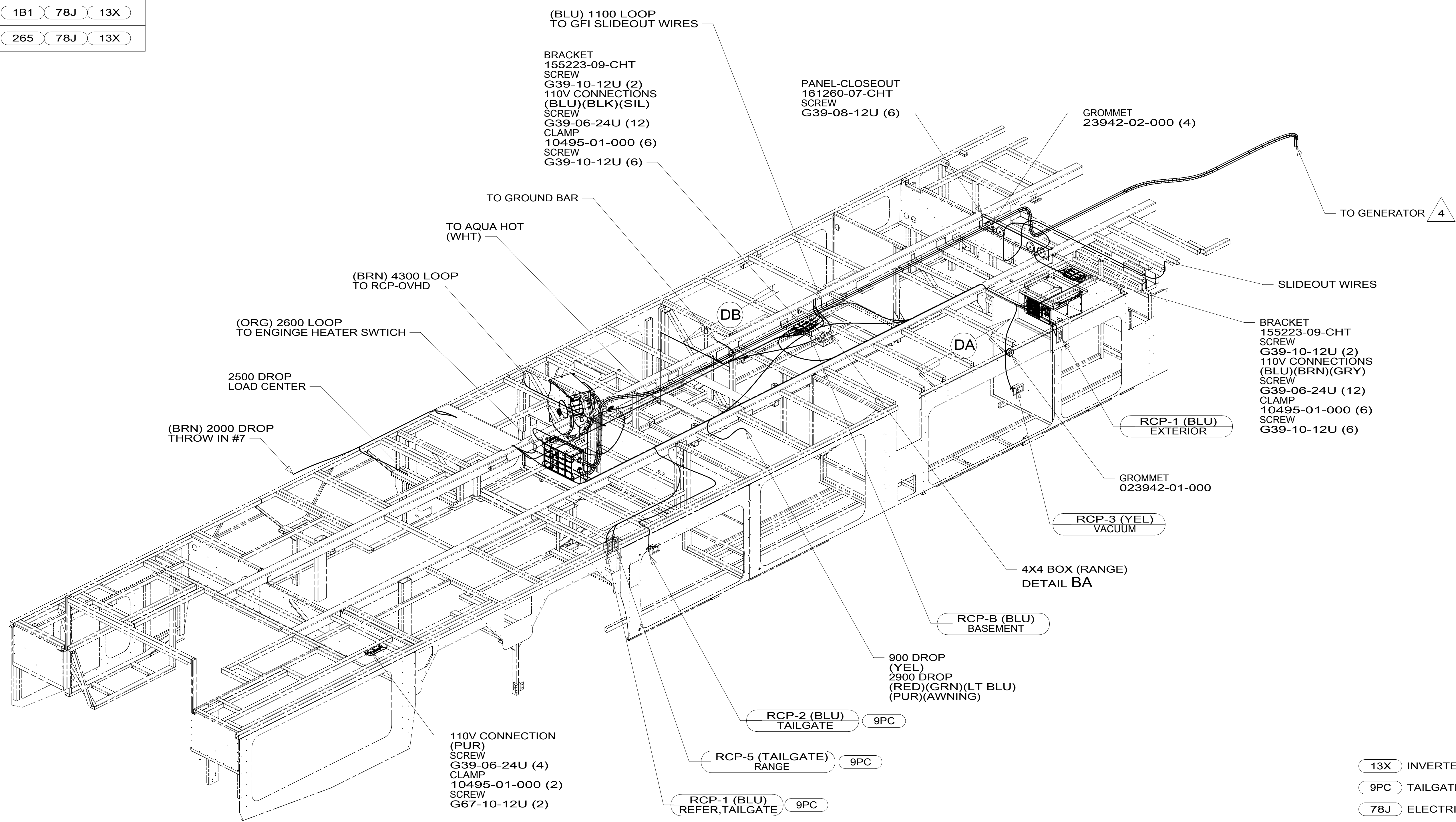


DRAWING NO.	FEATURE
300157-14	1B1 78J 13X
300157-18	265 78J 13X



- 4 SEE GENERATOR INSTL FOR ADDITIONAL INFORMATION.
- WIRES THAT REST ON WIRE TRAYS ARE TO BE TIED DOWN WITH WIRE TIE 8343-04-000.
 - CLAMP TO FLOOR SUPPORT TUBES AS NECESSARY WITH CLAMP 10497-01-000.
 - AT MINIMUM ALL WIRES TO BE SUPPORTED AND SECURED PER CODE REQUIREMENTS. USE CLAMP 10495 OR 10497 OR WIRE TIE 8343 OR 108046 AND SCREW G67-XX-XXX OR G56-XX-XXX AS APPROPRIATE FOR INSTALLATION.

NOTES:

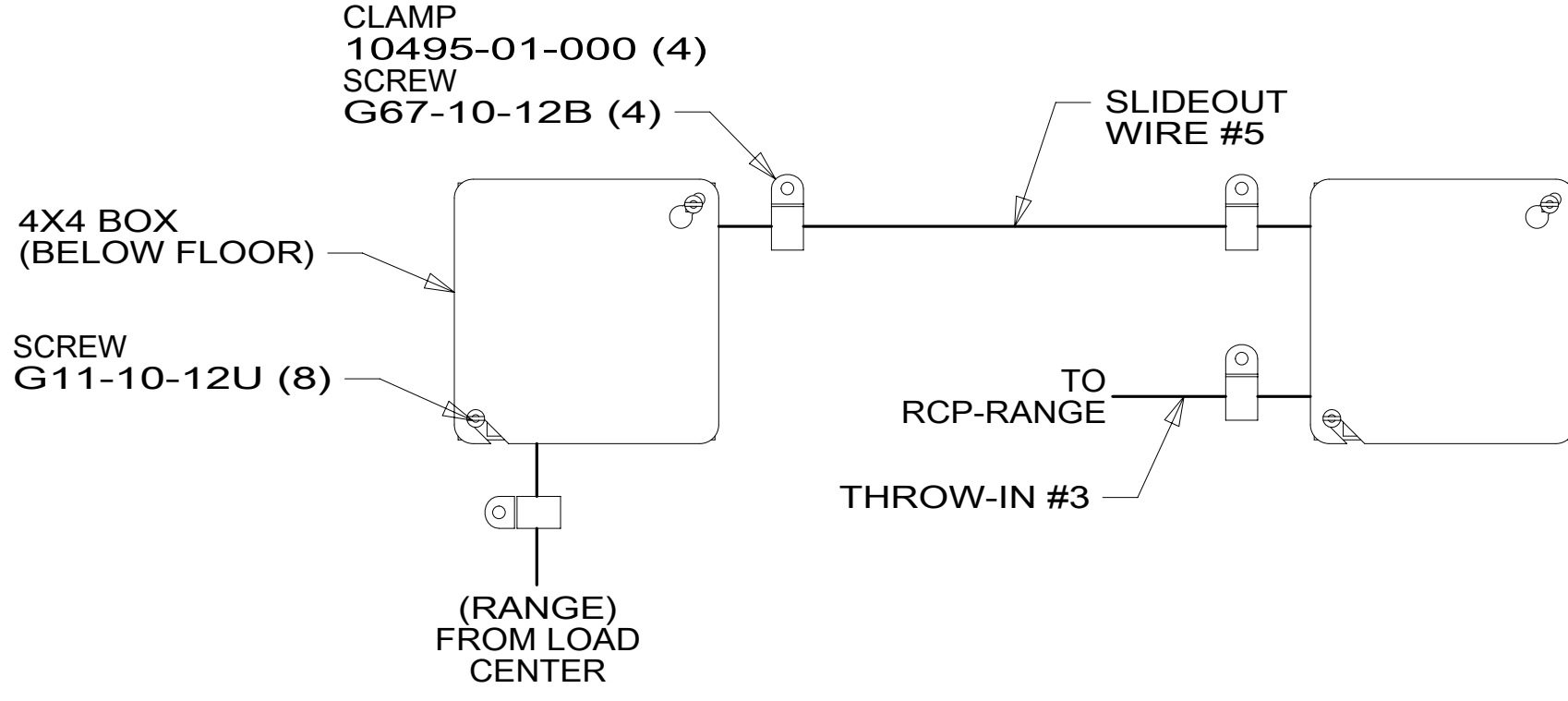
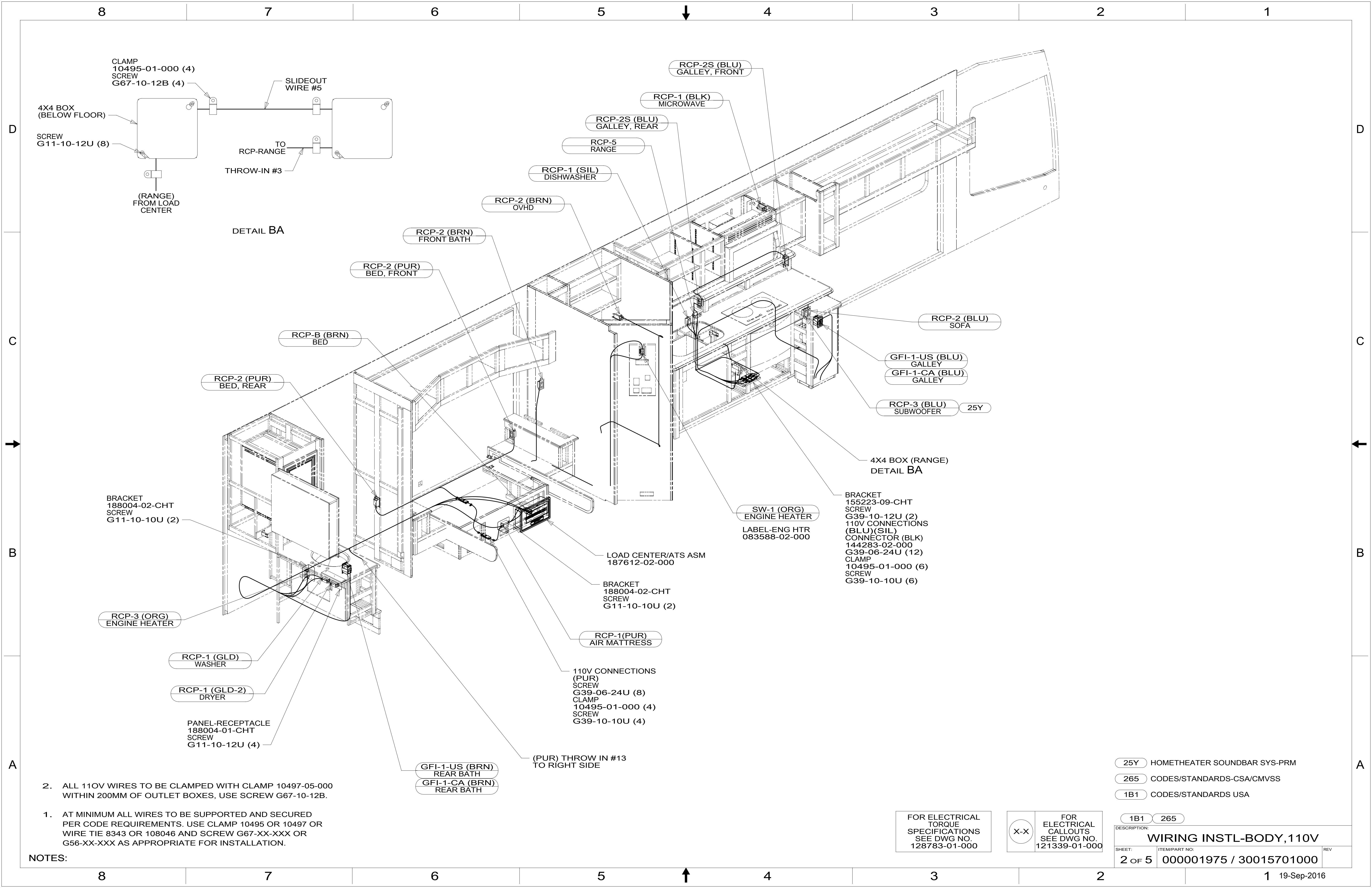
- 13X INVERTER/CHARGER 2.0 KW
- 9PC TAILGATE PACKAGE
- 78J ELECTRICAL SYSTEM-50 AMP
- 265 CODES/STANDARDS-CSA/CMVSS
- 1B1 CODES/STANDARDS USA

WINNEBAGO
COPYRIGHT 2016 WINNEBAGO INDUSTRIES, INC.

DSNR:	ALL DIMENSIONS ARE IN MILLIMETERS	
DFFR:		
UNSPECIFIED TOLERANCES:	MATERIAL:	
WHOLE DIM (X) : 3		
ONE-PLACE (X.X) : 1.5		
TWO-PLACE (X.XX) : 0.50		
ANGLE : 1°		
REFER TO ES0018 FOR FASTENER TIGHTENING GUIDELINES	WEIGHT: (LBS)	FIRST USED: 16 R42HL
DESCRIPTION: WIRING INSTL-BODY, 110V		
SHEET: 1 OF 5	ITEM/PART NO: 00001975 / 30015701000	REV:

FOR ELECTRICAL TORQUE SPECIFICATIONS SEE DWG NO. 128783-01-000

FOR ELECTRICAL CALLOUTS SEE DWG NO. 121339-01-000



DETAIL BA

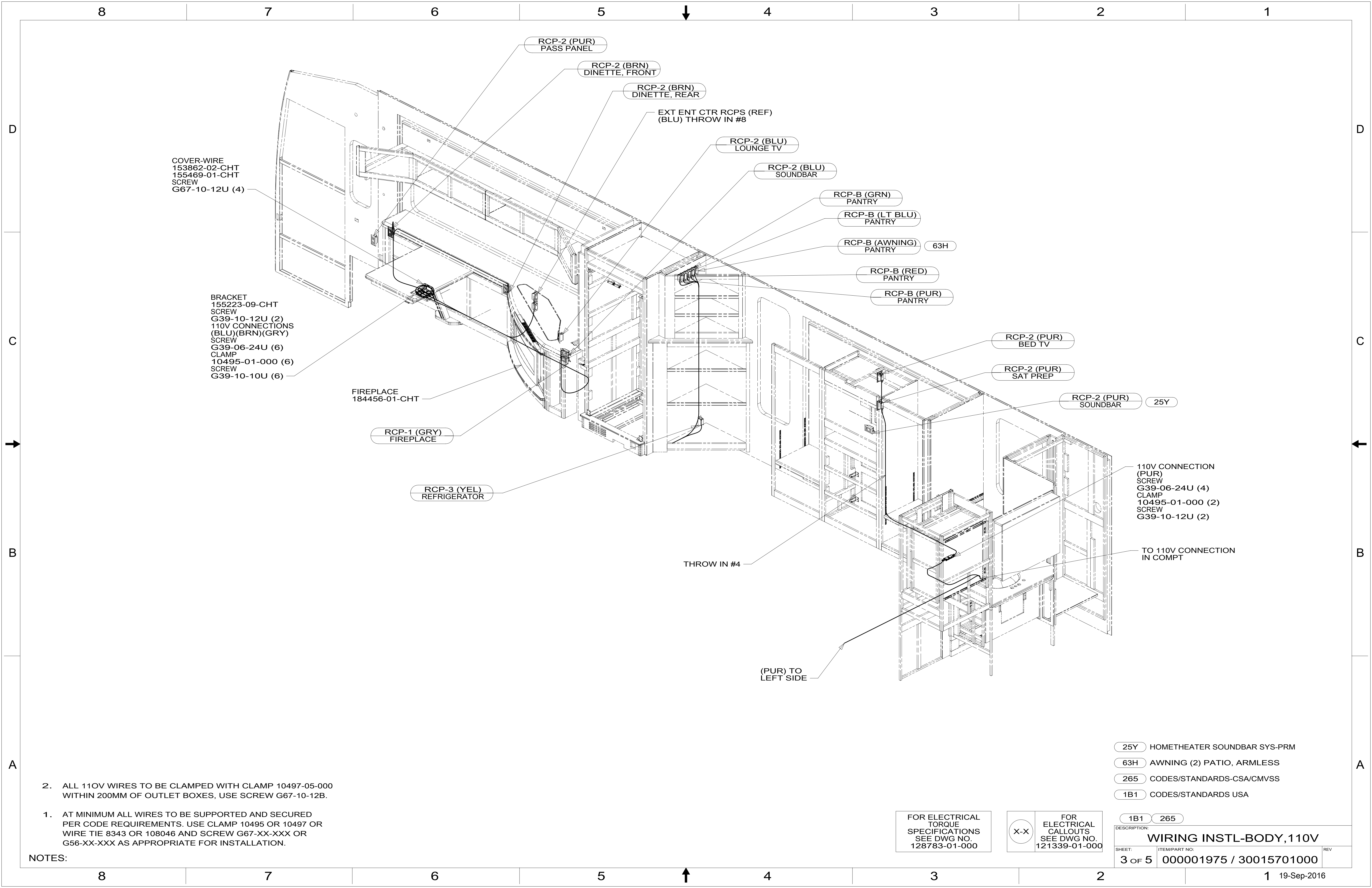
- NOTES:
1. AT MINIMUM ALL WIRES TO BE SUPPORTED AND SECURED PER CODE REQUIREMENTS. USE CLAMP 10495 OR 10497 OR WIRE TIE 8343 OR 108046 AND SCREW G67-XX-XXX OR G56-XX-XXX AS APPROPRIATE FOR INSTALLATION.
 2. ALL 110V WIRES TO BE CLAMPED WITH CLAMP 10497-05-000 WITHIN 200MM OF OUTLET BOXES, USE SCREW G67-10-12B.

- 25Y HOMETHEATER SOUNDBAR SYS-PRM
- 265 CODES/STANDARDS-CSA/CMVSS
- 1B1 CODES/STANDARDS USA

FOR ELECTRICAL TORQUE SPECIFICATIONS SEE DWG NO. 128783-01-000

FOR ELECTRICAL CALLOUTS SEE DWG NO. 121339-01-000

DESCRIPTION:	1B1 265	
WIRING INSTL-BODY, 110V		
SHEET:	ITEM/PART NO:	REV
2 OF 5	000001975 / 30015701000	



COVER-WIRE
153862-02-CHT
155469-01-CHT
SCREW
G67-10-12U (4)

BRACKET
155223-09-CHT
SCREW
G39-10-12U (2)
110V CONNECTIONS
(BLU)(BRN)(GRY)
SCREW
G39-06-24U (6)
CLAMP
10495-01-000 (6)
SCREW
G39-10-10U (6)

FIREPLACE
184456-01-CHT

RCP-1 (GRY)
FIREPLACE

RCP-3 (YEL)
REFRIGERATOR

RCP-2 (PUR)
PASS PANEL

RCP-2 (BRN)
DINETTE, FRONT

RCP-2 (BRN)
DINETTE, REAR

EXT ENT CTR RCPS (REF)
(BLU) THROW IN #8

RCP-2 (BLU)
LOUNGE TV

RCP-2 (BLU)
SOUNDBAR

RCP-B (GRN)
PANTRY

RCP-B (LT BLU)
PANTRY

RCP-B (AWNING)
PANTRY 63H

RCP-B (RED)
PANTRY

RCP-B (PUR)
PANTRY

RCP-2 (PUR)
BED TV

RCP-2 (PUR)
SAT PREP

RCP-2 (PUR)
SOUNDBAR 25Y

110V CONNECTION
(PUR)
SCREW
G39-06-24U (4)
CLAMP
10495-01-000 (2)
SCREW
G39-10-12U (2)

TO 110V CONNECTION
IN COMPT

THROW IN #4

(PUR) TO
LEFT SIDE

2. ALL 110V WIRES TO BE CLAMPED WITH CLAMP 10497-05-000
WITHIN 200MM OF OUTLET BOXES, USE SCREW G67-10-12B.

1. AT MINIMUM ALL WIRES TO BE SUPPORTED AND SECURED
PER CODE REQUIREMENTS. USE CLAMP 10495 OR 10497 OR
WIRE TIE 8343 OR 108046 AND SCREW G67-XX-XXX OR
G56-XX-XXX AS APPROPRIATE FOR INSTALLATION.

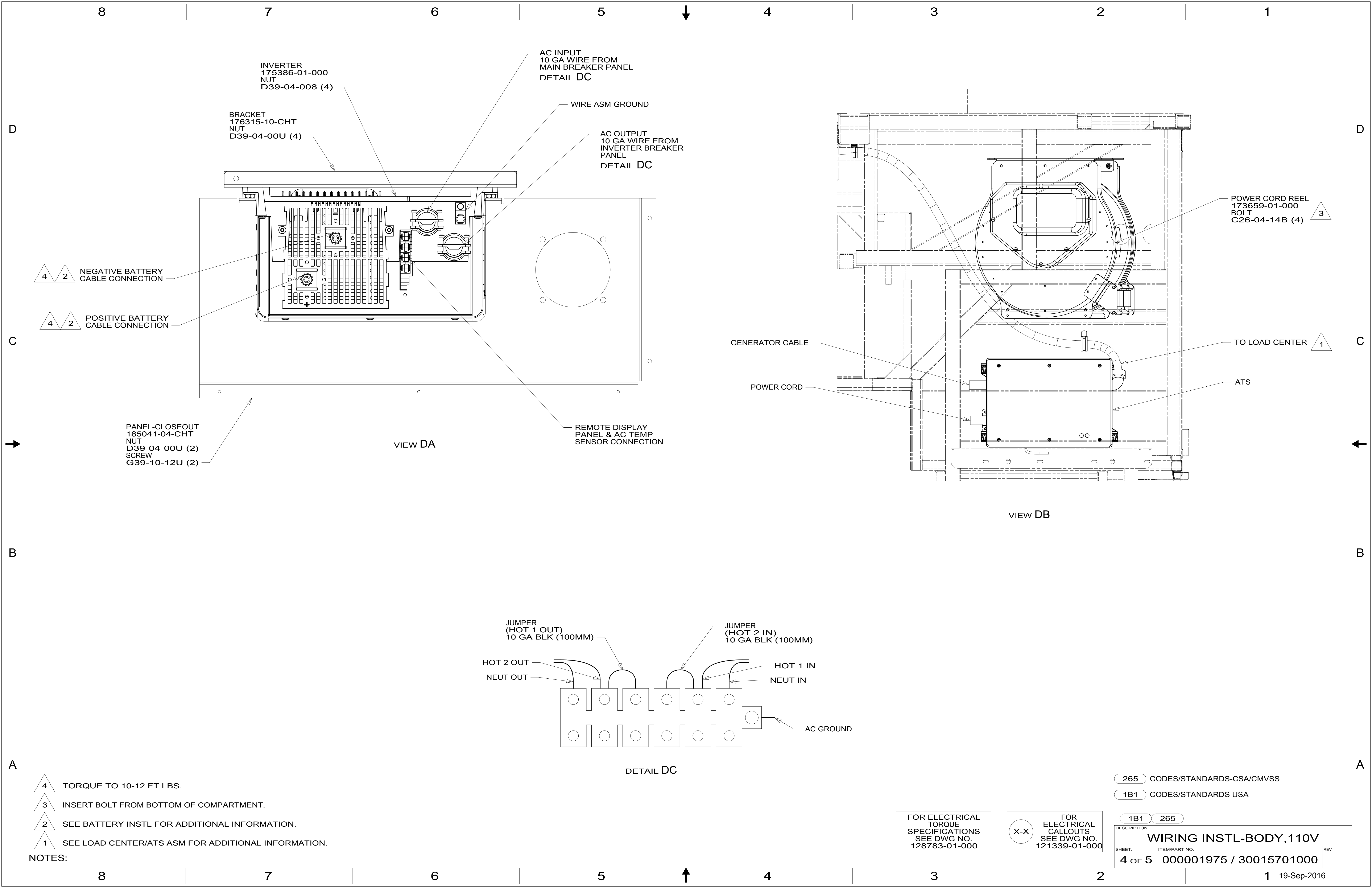
NOTES:

- 25Y HOMETHEATER SOUNDBAR SYS-PRM
- 63H AWNING (2) PATIO, ARMLESS
- 265 CODES/STANDARDS-CSA/CMVSS
- 1B1 CODES/STANDARDS USA

FOR ELECTRICAL
TORQUE
SPECIFICATIONS
SEE DWG NO.
128783-01-000

FOR ELECTRICAL
CALLOUTS
SEE DWG NO.
121339-01-000

DESCRIPTION:	1B1 265	
WIRING INSTL-BODY, 110V		
SHEET:	ITEM/PART NO:	REV
3 OF 5	000001975 / 30015701000	



INVERTER
175386-01-000
NUT
D39-04-008 (4)

BRACKET
176315-10-CHT
NUT
D39-04-00U (4)

AC INPUT
10 GA WIRE FROM
MAIN BREAKER PANEL
DETAIL DC

WIRE ASM-GROUND

AC OUTPUT
10 GA WIRE FROM
INVERTER BREAKER
PANEL
DETAIL DC

4 2 NEGATIVE BATTERY
CABLE CONNECTION

4 2 POSITIVE BATTERY
CABLE CONNECTION

PANEL-CLOSEOUT
185041-04-CHT
NUT
D39-04-00U (2)
SCREW
G39-10-12U (2)

VIEW DA

REMOTE DISPLAY
PANEL & AC TEMP
SENSOR CONNECTION

POWER CORD REEL
173659-01-000
BOLT
C26-04-14B (4)

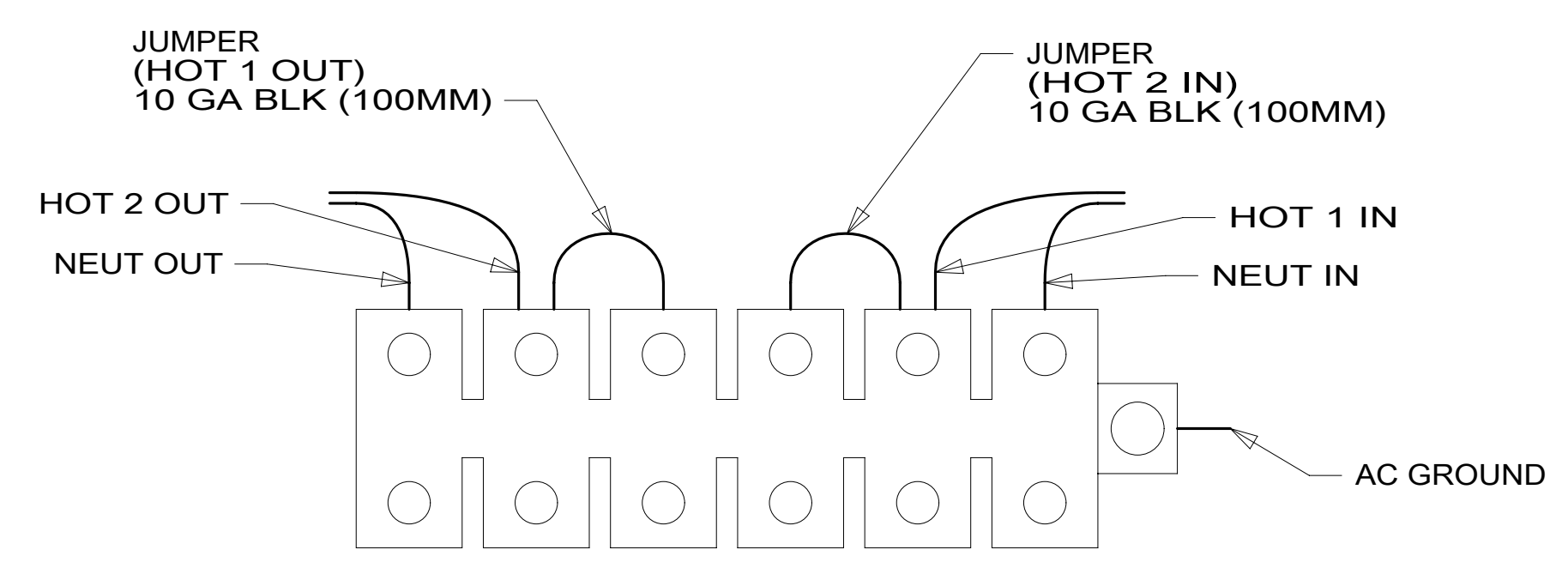
GENERATOR CABLE

POWER CORD

TO LOAD CENTER

ATS

VIEW DB



DETAIL DC

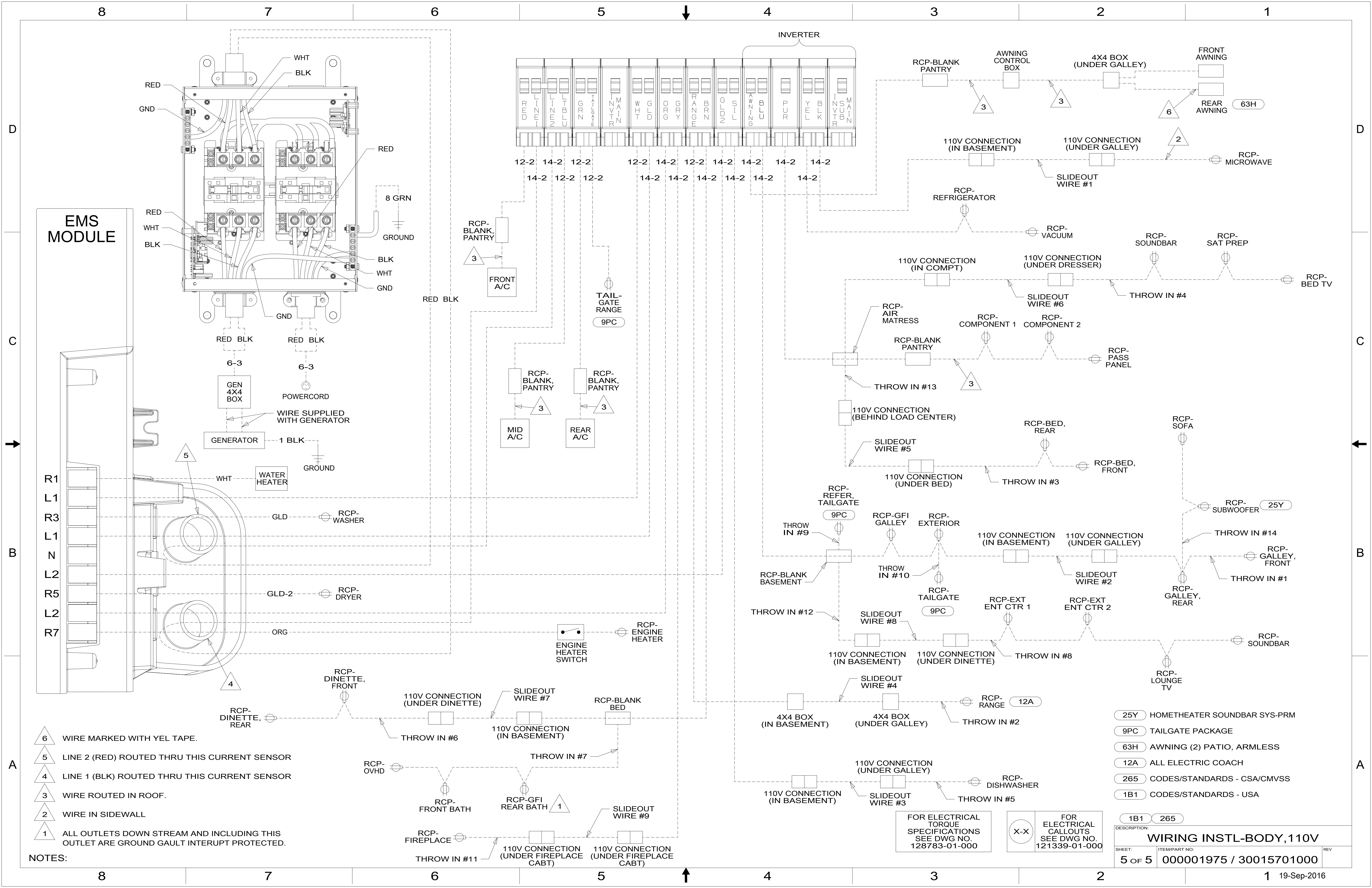
- NOTES:
- 4 TORQUE TO 10-12 FT LBS.
 - 3 INSERT BOLT FROM BOTTOM OF COMPARTMENT.
 - 2 SEE BATTERY INSTL FOR ADDITIONAL INFORMATION.
 - 1 SEE LOAD CENTER/ATS ASM FOR ADDITIONAL INFORMATION.

265	CODES/STANDARDS-CSA/CMVSS
1B1	CODES/STANDARDS USA

FOR ELECTRICAL
TORQUE
SPECIFICATIONS
SEE DWG NO.
128783-01-000

X-X
FOR
ELECTRICAL
CALLOUTS
SEE DWG NO.
121339-01-000

DESCRIPTION:	1B1 265	
WIRING INSTL-BODY, 110V		
SHEET:	ITEM/PART NO:	REV
4 OF 5	000001975 / 30015701000	



EMS MODULE

INVERTER

- NOTES:**
- 6 WIRE MARKED WITH YEL TAPE.
 - 5 LINE 2 (RED) ROUTED THRU THIS CURRENT SENSOR
 - 4 LINE 1 (BLK) ROUTED THRU THIS CURRENT SENSOR
 - 3 WIRE ROUTED IN ROOF.
 - 2 WIRE IN SIDEWALL
 - 1 ALL OUTLETS DOWN STREAM AND INCLUDING THIS OUTLET ARE GROUND GAULT INTERRUPT PROTECTED.

- 25Y HOMETHEATER SOUNDBAR SYS-PRM
- 9PC TAILGATE PACKAGE
- 63H AWNING (2) PATIO, ARMLESS
- 12A ALL ELECTRIC COACH
- 265 CODES/STANDARDS - CSA/CMVSS
- 1B1 CODES/STANDARDS - USA

FOR ELECTRICAL TORQUE SPECIFICATIONS SEE DWG NO. 128783-01-000

X-X FOR ELECTRICAL CALLOUTS SEE DWG NO. 121339-01-000

DESCRIPTION:		WIRING INSTL-BODY, 110V	
SHEET:	ITEM/PART NO.:	REV	
5 OF 5	000001975 / 30015701000		