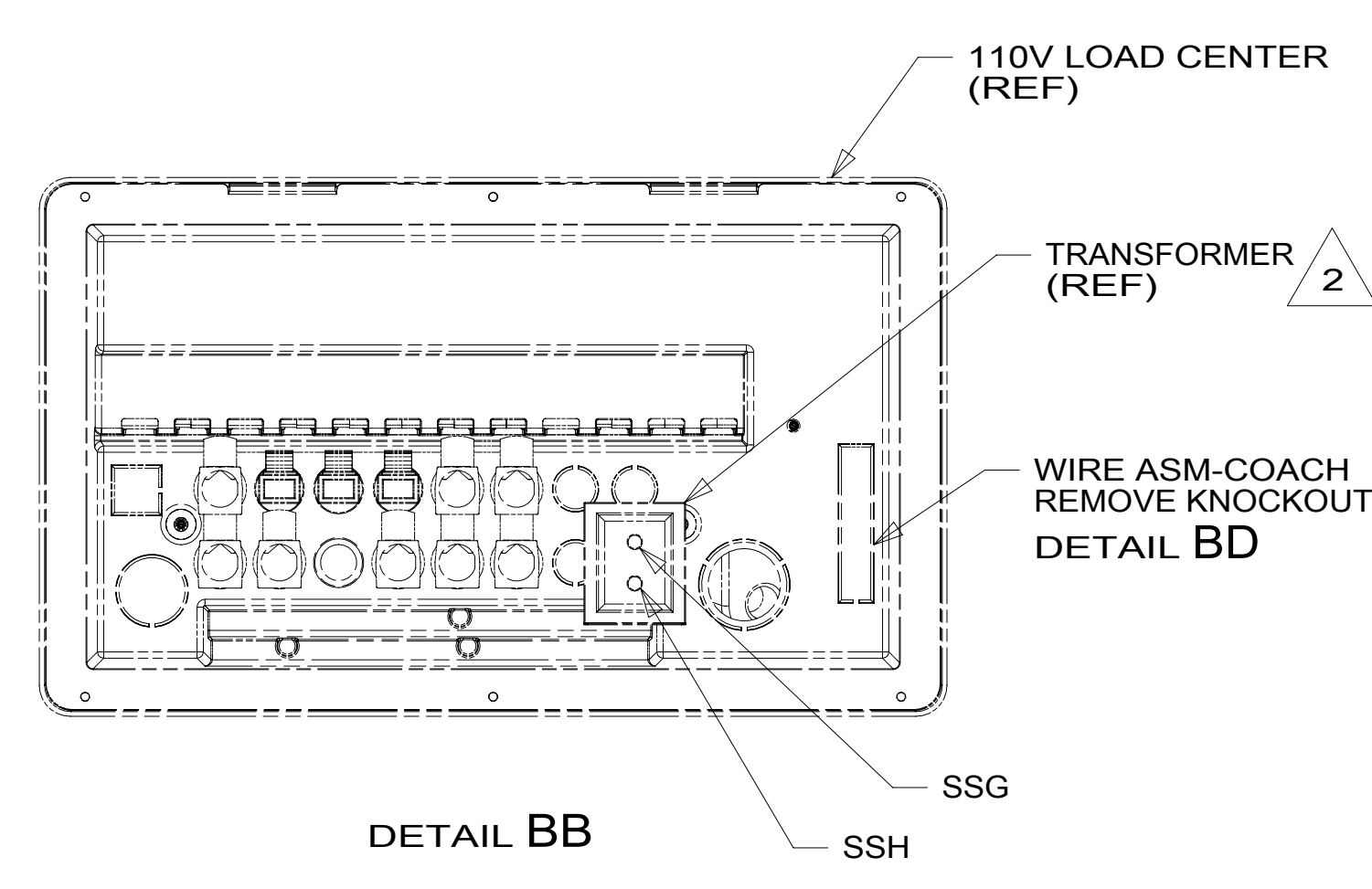
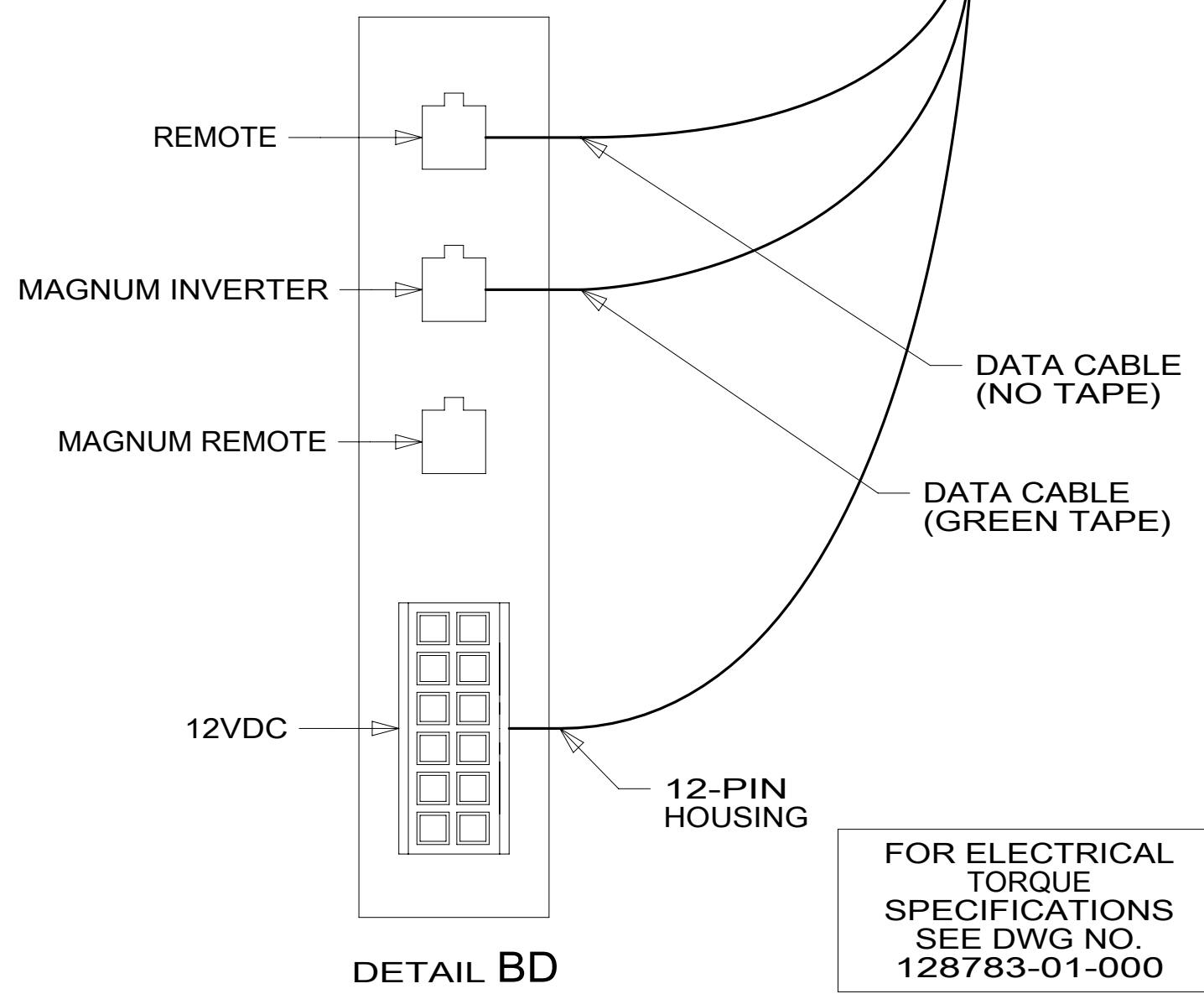


- NOTES:
- 3 WITH ELECTRIC SHADES, CONNECT SIDEWALL SHADE AND ENDWALL SHADE TOGETHER IN WIRE ASM-OVHD.
 - 2 SEE LOAD CENTER/ATS ASM FOR ADDITIONAL INFORMATION.
 - 1. AT MINIMUM ALL WIRES TO BE SUPPORTED AND SECURED PER CODE REQUIREMENTS. USE CLAMP 10495 OR 10497 OR WIRE TIE 8343 OR 108046 AND SCREW G67-XX-XXX OR G56-XX-XXX AS APPROPRIATE FOR INSTALLATION.



265	CODES/STANDARDS-CSA/CMVSS
1B1	CODES/STANDARDS USA
1B1	265
DESCRIPTION: WIRING INSTL-BODY, 12V	
SHEET: 2 OF 9	ITEM/PART NO: 000001620 / 30009801000
REV 06-Jan-2017	

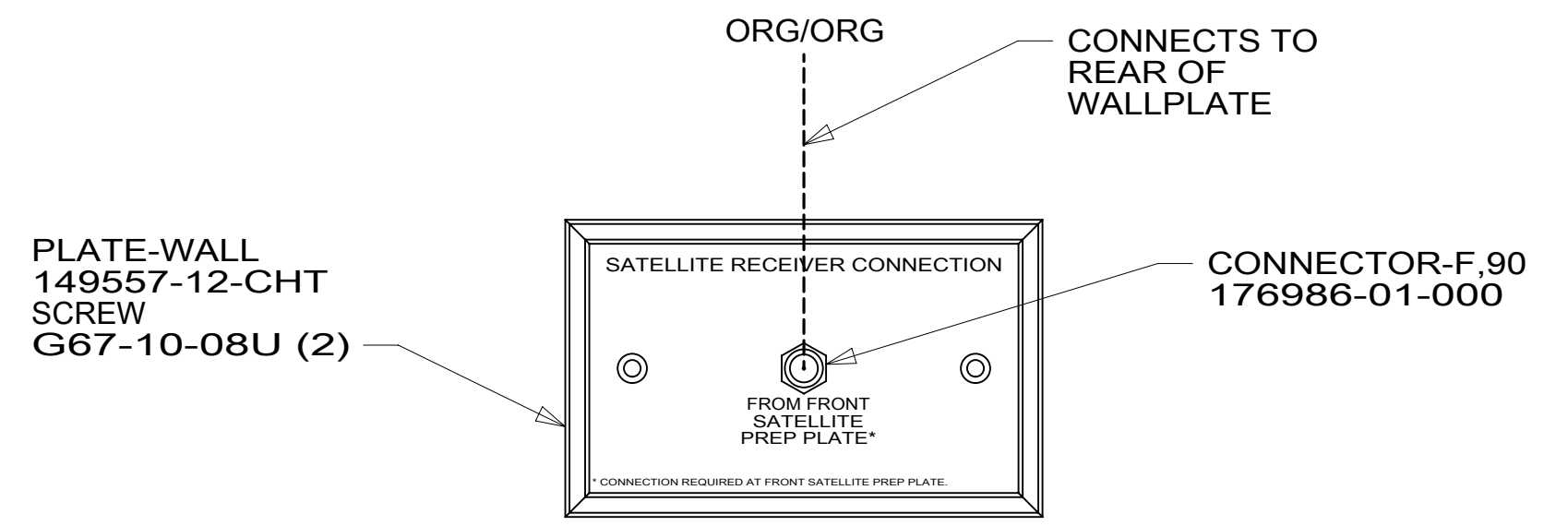
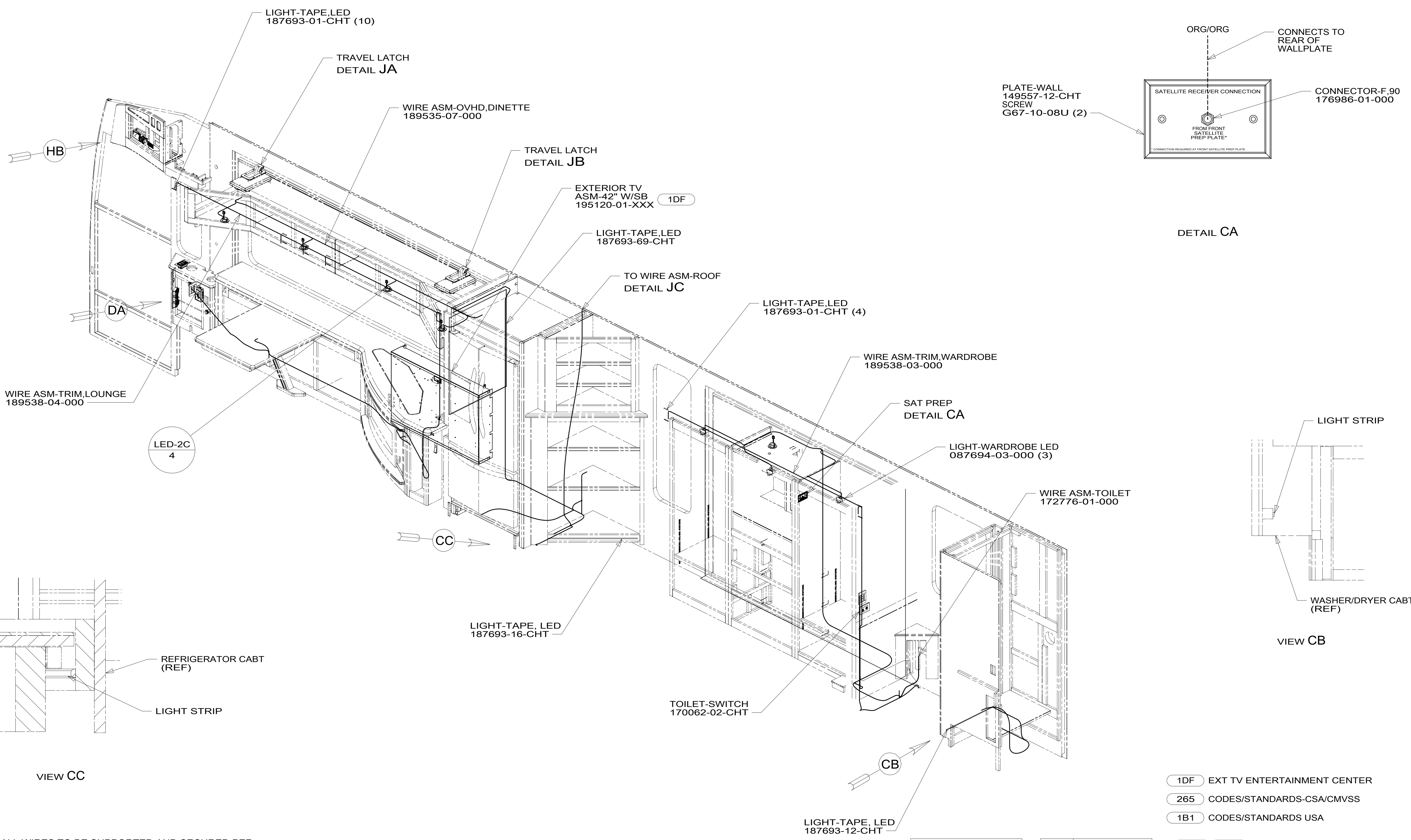
FOR ELECTRICAL TORQUE SPECIFICATIONS SEE DWG NO. 128783-01-000

X-X FOR ELECTRICAL CALLOUTS SEE DWG NO. 121339-01-000

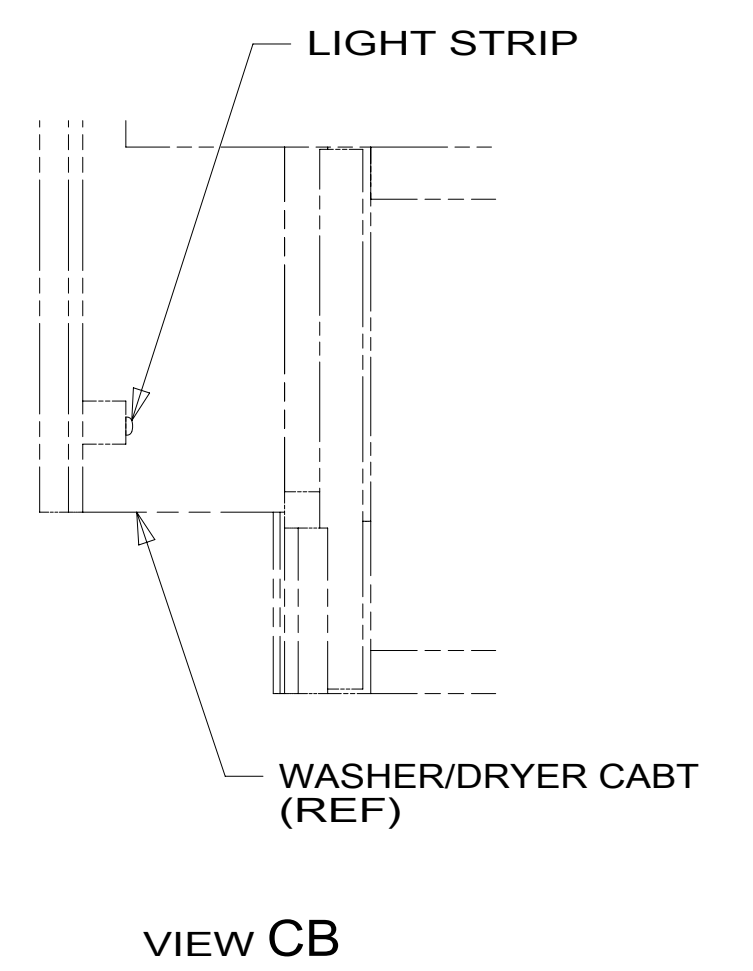
*300098

8 7 6 5 4 3 2 1

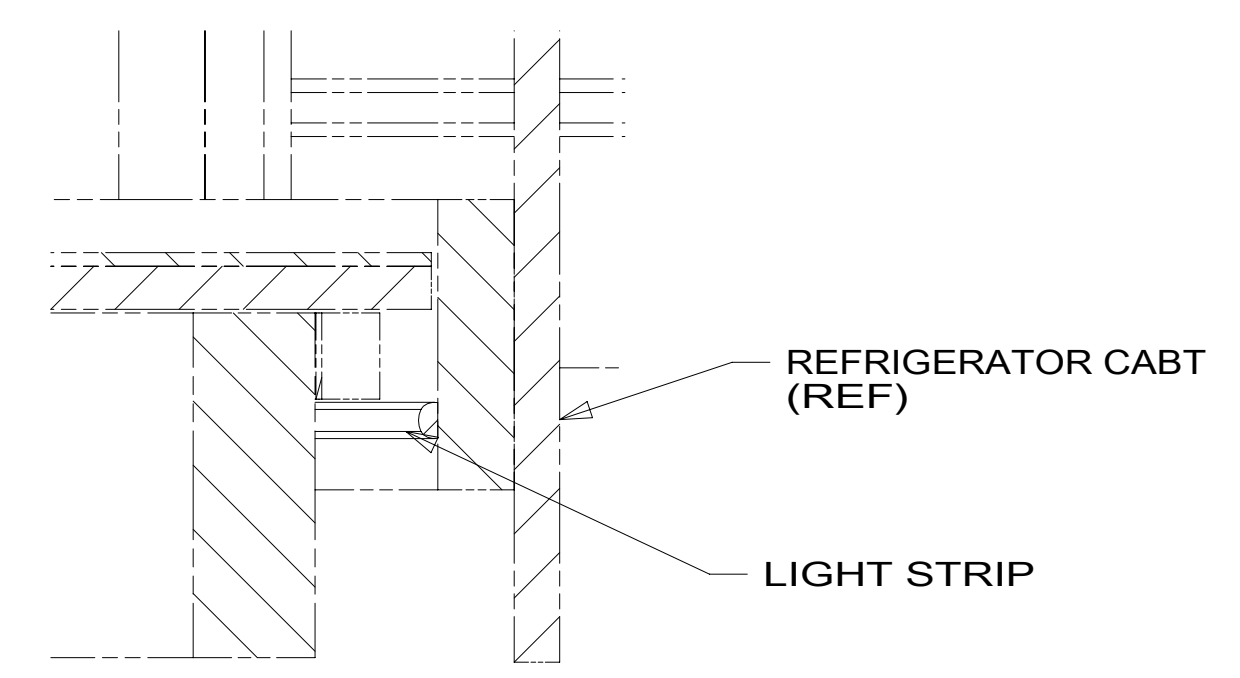
D
C
B
A



DETAIL CA



VIEW CB



VIEW CC

1. AT MINIMUM ALL WIRES TO BE SUPPORTED AND SECURED PER CODE REQUIREMENTS. USE CLAMP 10495 OR 10497 OR WIRE TIE 8343 OR 108046 AND SCREW G67-XX-XXX OR G56-XX-XXX AS APPROPRIATE FOR INSTALLATION.

NOTES:

FOR ELECTRICAL TORQUE SPECIFICATIONS SEE DWG NO. 128783-01-000

FOR ELECTRICAL CALLOUTS SEE DWG NO. 121339-01-000

- 1DF EXT TV ENTERTAINMENT CENTER
- 265 CODES/STANDARDS-CSA/CMVSS
- 1B1 CODES/STANDARDS USA

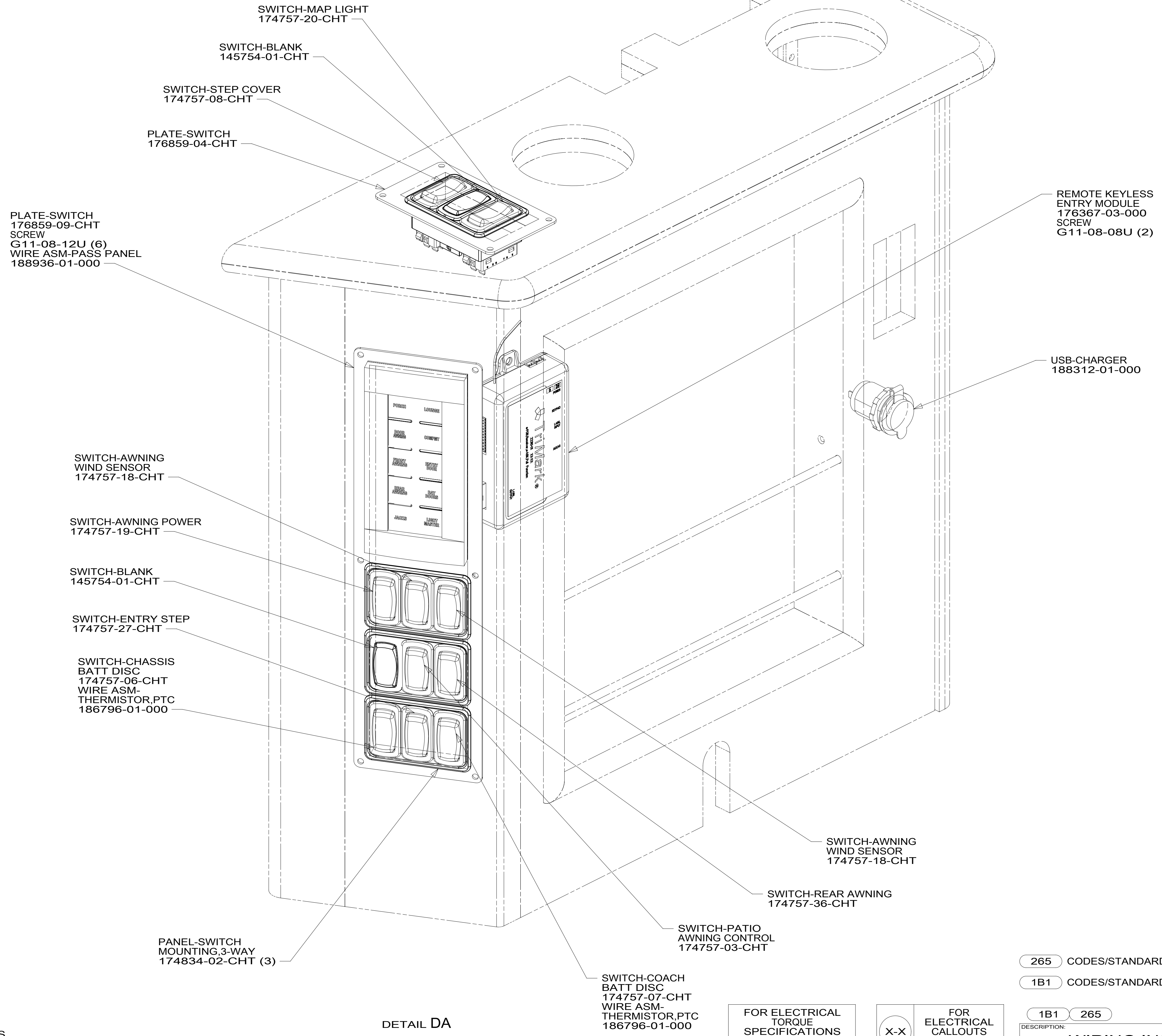
DESCRIPTION:	1B1 265	
WIRING INSTL-BODY, 12V		
SHEET:	ITEM/PART NO:	REV
3 OF 9	000001620 / 30009801000	

8 7 6 5 4 3 2 1 06-Jan-2017

A * 300098

8 7 6 5 4 3 2 1

D
C
B
A



1. AT MINIMUM ALL WIRES TO BE SUPPORTED AND SECURED PER CODE REQUIREMENTS. USE CLAMP 10495 OR 10497 OR WIRE TIE 8343 OR 108046 AND SCREW G67-XX-XXX OR G56-XX-XXX AS APPROPRIATE FOR INSTALLATION.

NOTES:

DETAIL DA

FOR ELECTRICAL
TORQUE
SPECIFICATIONS
SEE DWG NO.
128783-01-000

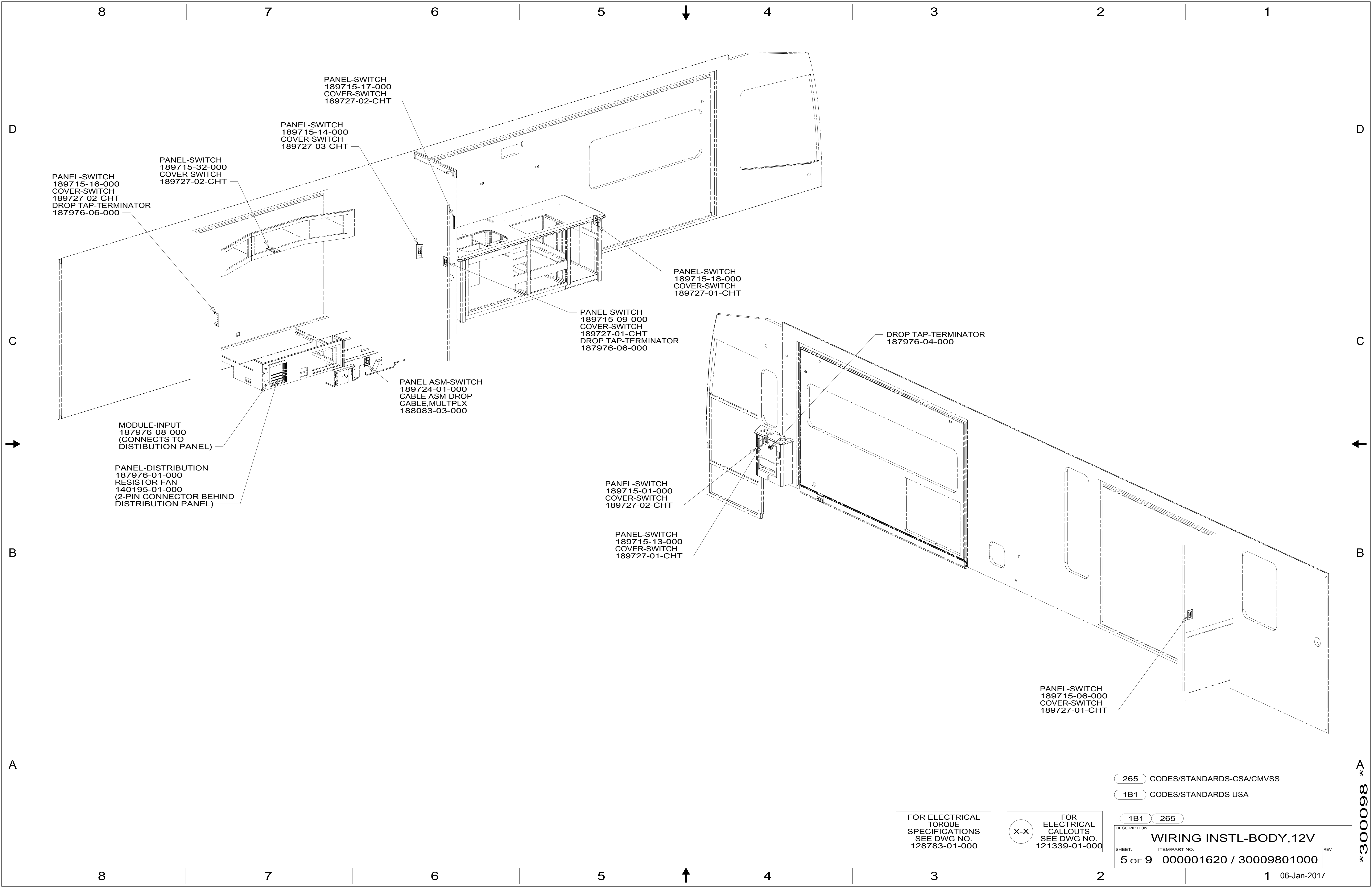
X-X
FOR ELECTRICAL
CALLOUTS
SEE DWG NO.
121339-01-000

265 CODES/STANDARDS-CSA/CMVSS
1B1 CODES/STANDARDS USA

DESCRIPTION:	1B1 265	
WIRING INSTL-BODY, 12V		
SHEET:	ITEM/PART NO:	REV
4 OF 9	000001620 / 30009801000	

8 7 6 5 4 3 2 1 06-Jan-2017

A *300098



PANEL-SWITCH
189715-16-000
COVER-SWITCH
189727-02-CHT
DROP TAP-TERMINATOR
187976-06-000

PANEL-SWITCH
189715-32-000
COVER-SWITCH
189727-02-CHT

PANEL-SWITCH
189715-14-000
COVER-SWITCH
189727-03-CHT

PANEL-SWITCH
189715-17-000
COVER-SWITCH
189727-02-CHT

PANEL-SWITCH
189715-18-000
COVER-SWITCH
189727-01-CHT

PANEL-SWITCH
189715-09-000
COVER-SWITCH
189727-01-CHT
DROP TAP-TERMINATOR
187976-06-000

DROP TAP-TERMINATOR
187976-04-000

PANEL ASM-SWITCH
189724-01-000
CABLE ASM-DROP
CABLE_MULTPLX
188083-03-000

MODULE-INPUT
187976-08-000
(CONNECTS TO
DISTRIBUTION PANEL)

PANEL-DISTRIBUTION
187976-01-000
RESISTOR-FAN
140195-01-000
(2-PIN CONNECTOR BEHIND
DISTRIBUTION PANEL)

PANEL-SWITCH
189715-01-000
COVER-SWITCH
189727-02-CHT

PANEL-SWITCH
189715-13-000
COVER-SWITCH
189727-01-CHT

PANEL-SWITCH
189715-06-000
COVER-SWITCH
189727-01-CHT

265 CODES/STANDARDS-CSA/CMVSS

1B1 CODES/STANDARDS USA

1B1 265

FOR ELECTRICAL
TORQUE
SPECIFICATIONS
SEE DWG NO.
128783-01-000

(X-X)
FOR
ELECTRICAL
CALLOUTS
SEE DWG NO.
121339-01-000

DESCRIPTION:

WIRING INSTL-BODY, 12V

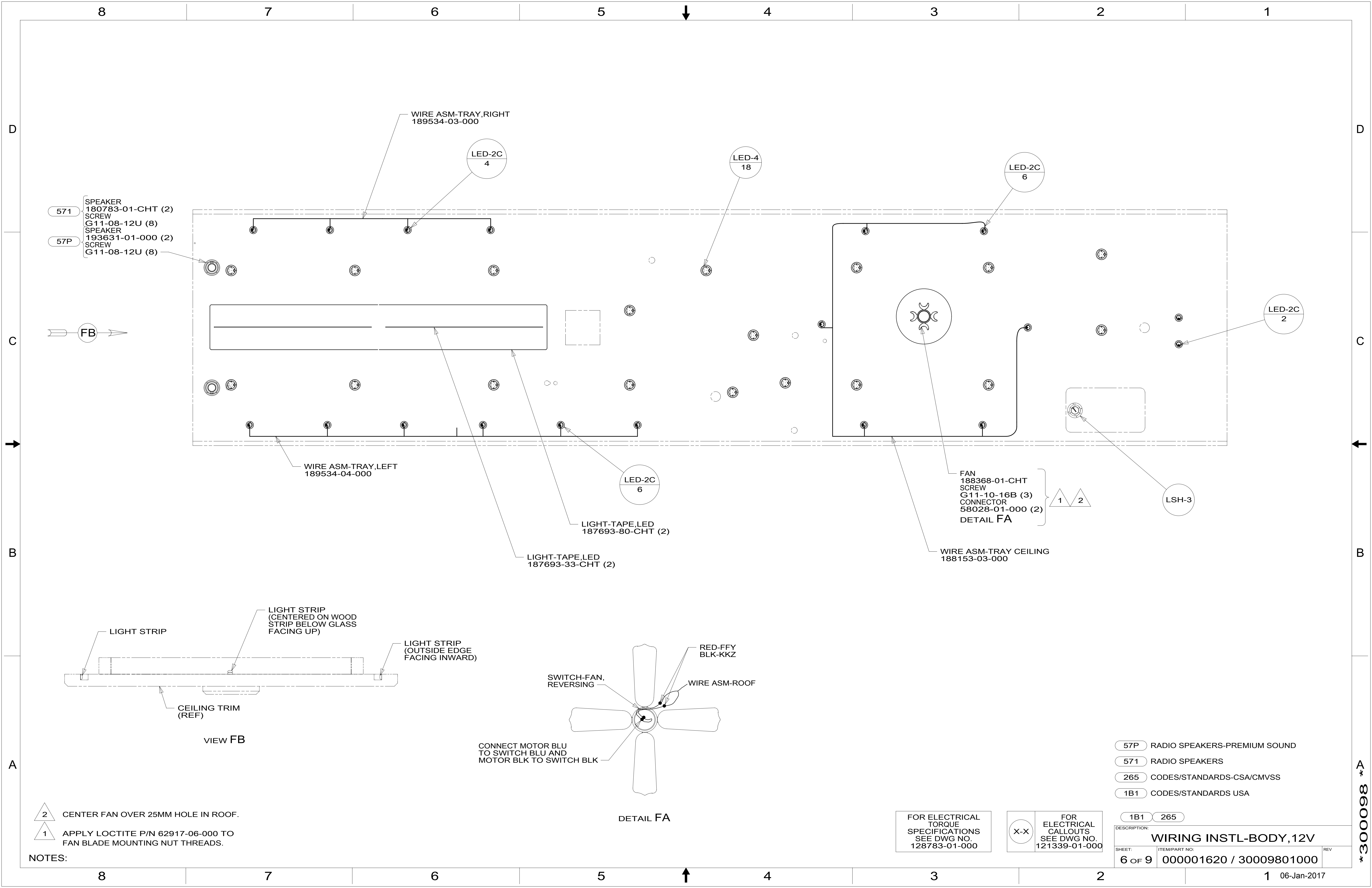
SHEET:
5 OF 9

ITEM/PART NO:
000001620 / 30009801000

REV

1 06-Jan-2017

A * 300098



- 571 SPEAKER
180783-01-CHT (2)
SCREW
G11-08-12U (8)
- 57P SPEAKER
193631-01-000 (2)
SCREW
G11-08-12U (8)

FB

WIRE ASM-TRAY, LEFT
189534-04-000

WIRE ASM-TRAY, RIGHT
189534-03-000

LED-2C
4

LED-4
18

LED-2C
6

LED-2C
6

LED-2C
2

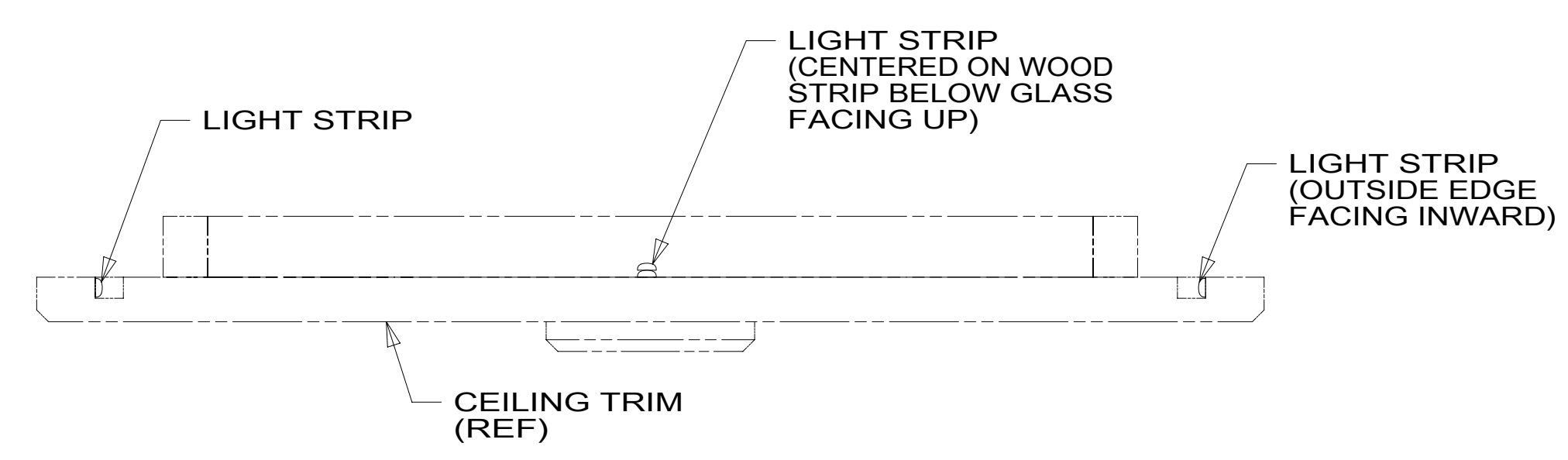
LIGHT-TAPE, LED
187693-80-CHT (2)

LIGHT-TAPE, LED
187693-33-CHT (2)

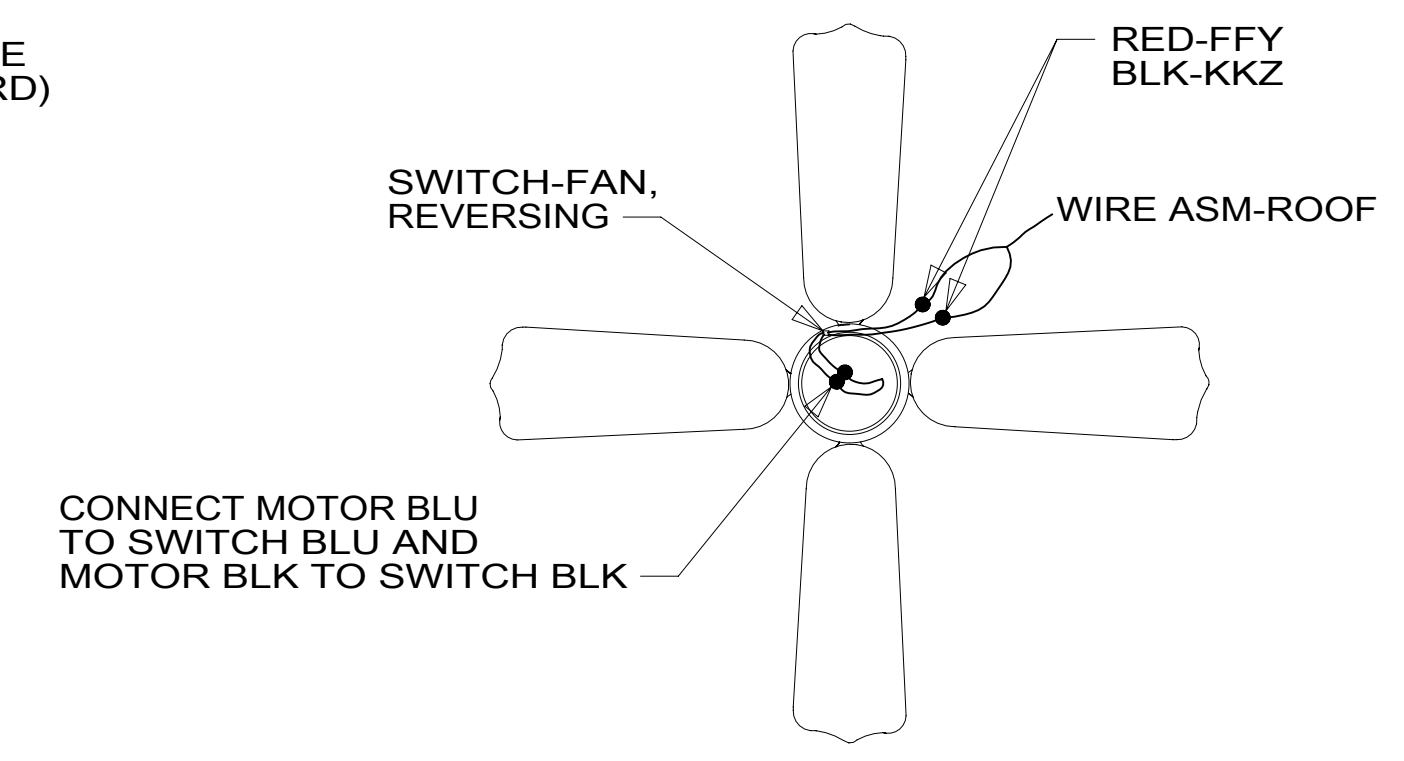
FAN
188368-01-CHT
SCREW
G11-10-16B (3)
CONNECTOR
58028-01-000 (2)
DETAIL FA

WIRE ASM-TRAY CEILING
188153-03-000

LSH-3



VIEW FB



DETAIL FA

- NOTES:
- 2 CENTER FAN OVER 25MM HOLE IN ROOF.
 - 1 APPLY LOCTITE P/N 62917-06-000 TO FAN BLADE MOUNTING NUT THREADS.

- 57P RADIO SPEAKERS-PREMIUM SOUND
- 571 RADIO SPEAKERS
- 265 CODES/STANDARDS-CSA/CMVSS
- 1B1 CODES/STANDARDS USA

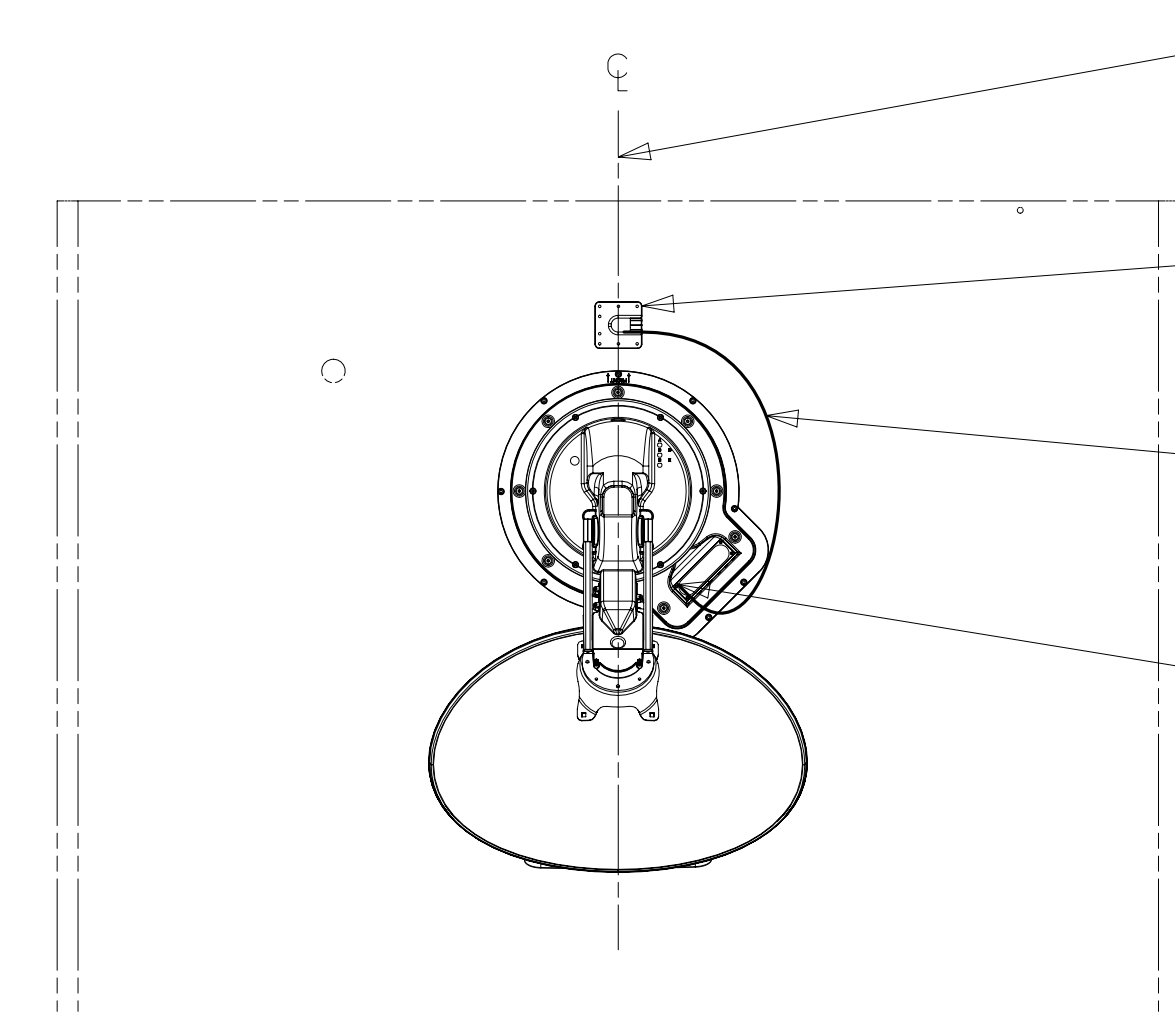
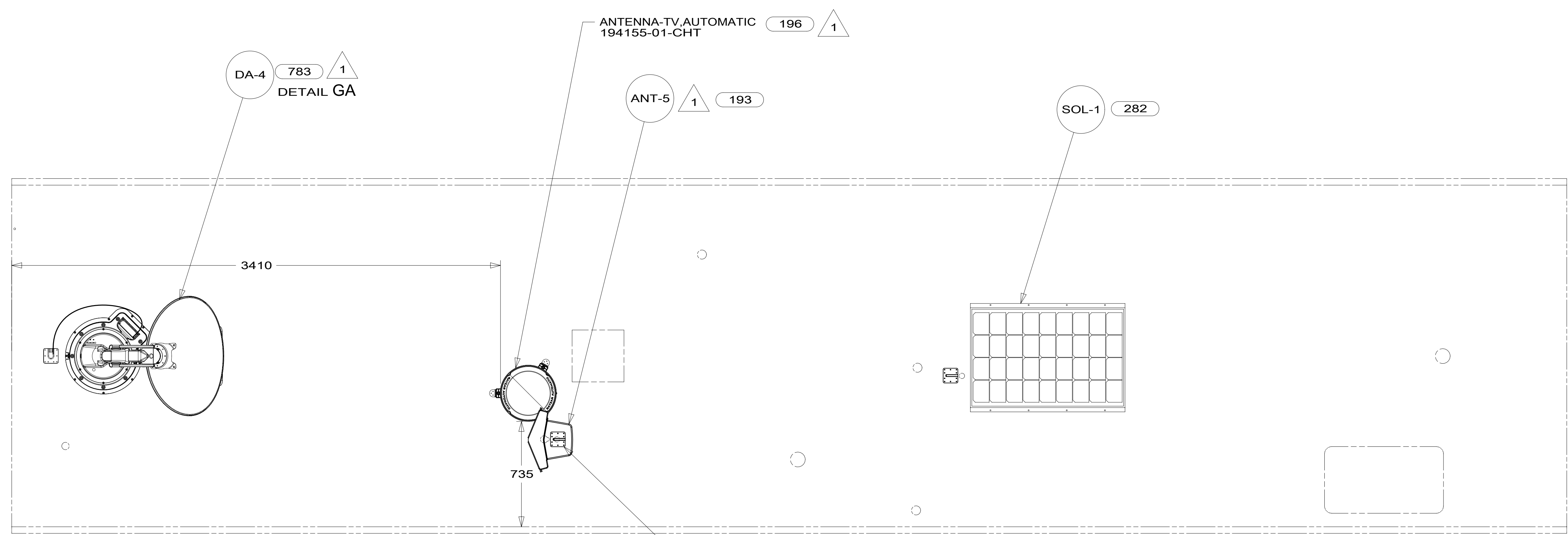
FOR ELECTRICAL TORQUE SPECIFICATIONS SEE DWG NO. 128783-01-000

FOR ELECTRICAL CALLOUTS SEE DWG NO. 121339-01-000

DESCRIPTION:	1B1 265	
WIRING INSTL-BODY, 12V		
SHEET:	ITEM/PART NO.:	REV:
6 OF 9	000001620 / 30009801000	

*300098

8 7 6 5 4 3 2 1



THE SATELLITE DISH AND WIRE CONNECTIONS ARE TO BE PLACED ON THE CENTERLINE OF THE MOTORHOME FACING FORWARD.

SEPARATE CABLES AND INSTALL WIRE COVER OVER HOLE IN ROOF ASM WITH CABLES EXITING ON PASSENGERS SIDE.

WHEN APPLYING ROOF SEALANT TO SATELLITE DISH, PLACE ROOF SEALANT HERE (APPROX. 75MM WIDE) AND PUSH THE CABLES INTO THE SEALANT TO STABILIZE THEM.

CONNECT CABLE ASM-COAX FROM ROOF ASM TO COAX CABLES ON SATELLITE DISH AND CONNECT 10' CABLE-DATA FROM ROOF ASM TO DATA CABLE FROM SATELLITE DISH AND PLACE ALL CONNECTIONS BACK INTO ROOF ASM.

PLATE-ROOF, CABLE ENTRY
 146480-01-000
 SCREW
 G67-10-12U (10)
 CABLE ASM-COAX
 87105-01-009
 ADAPTER
 82134-01-000

- 196 TV ANT-AUTO,DIRECTIONAL AMPL
- 193 TV ANT-DIGITAL AMPLIFIED
- 783 SATELLITE HD TV SYSTEM AUTOC
- 282 SOLAR PANEL - 100 WATT
- 265 CODES/STANDARDS-CSA/CMVSS
- 1B1 CODES/STANDARDS USA

1 SEE MANUFACTURER'S INSTALLATION FOR ADDITIONAL INFORMATION.

FOR ELECTRICAL TORQUE SPECIFICATIONS SEE DWG NO. 128783-01-000

FOR ELECTRICAL CALLOUTS SEE DWG NO. 121339-01-000

DESCRIPTION:	1B1 265	
WIRING INSTL-BODY, 12V		
SHEET:	ITEM/PART NO:	REV
7 OF 9	000001620 / 30009801000	

*300098

8 7 6 5 4 3 2 1

D

D

C

C

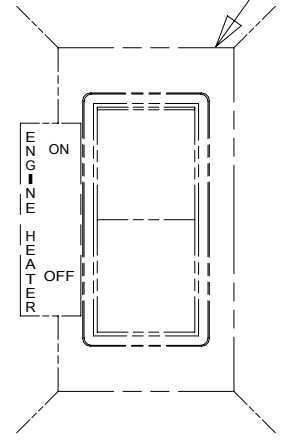
B

B

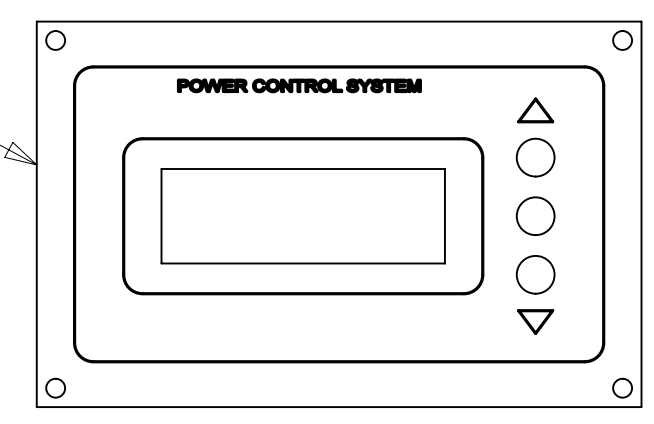
A

A

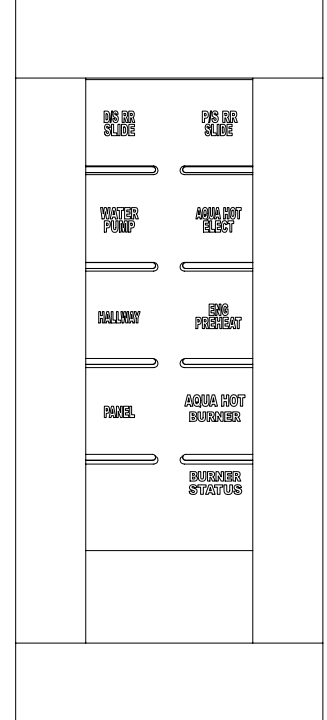
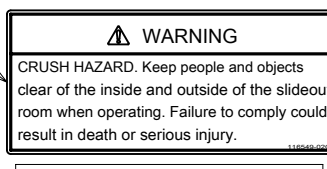
ENGINE HEATER SWITCH (REF)



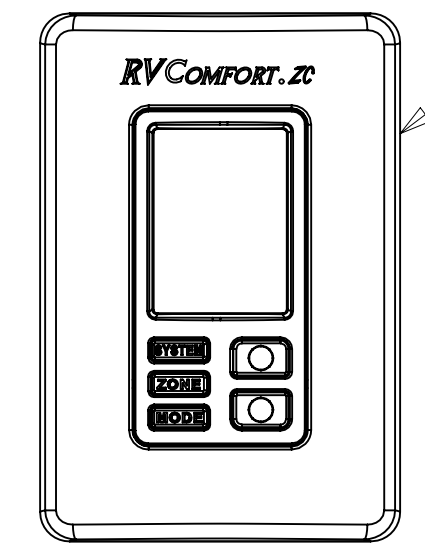
PANEL-MONITOR
174384-06-000
SCREW
G11-08-08U (4)



LABEL
116549-02-000

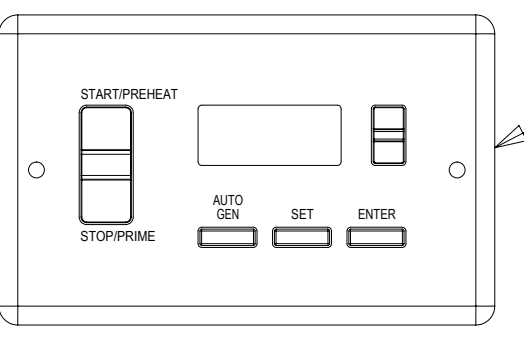
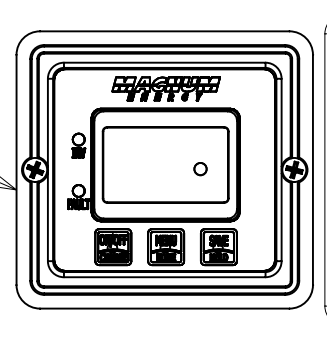


THERMOSTAT-ZONE,
AC & 2S HEAT REFRESH
171186-05-CHT
RELAYS
63912-02-000 (4)



AUTO GEN START
158425-01-000

2 REMOTE PANEL
175385-02-000



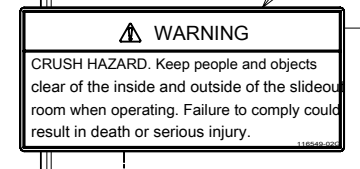
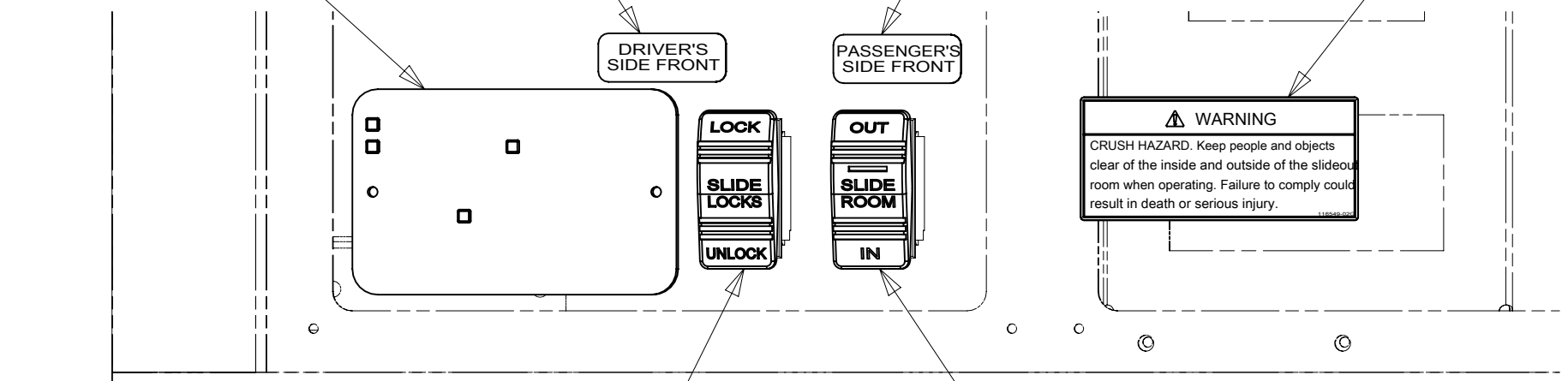
DETAIL HA

LABEL-SLIDEOUT,
DRIVER,FRONT
163992-01-CHT

TOUCH PANEL-SLIDEOUT
171341-01-000
SCREW
G11-08-08U (2)

LABEL-SLIDEOUT,
PASS.FRONT
163992-04-CHT

LABEL
116549-02-000



SWITCH-SLIDEOUT
108357-06-000
ACTUATOR
108356-25-CHT

DETAIL HB

SWITCH-SLIDEOUT
108357-18-000
ACTUATOR
108356-31-CHT

2 SET 'BAT TYPE' TO 'AGM2'
SET 'LBCO' TO '11VDC'
SET 'BAT AHRS' TO '600 AH'
SEE OWNER'S MANUAL FOR SETUP PROCEDURE.

1 SET 'GEN TYPE' TO 'QD 10-12'
SET 'SAFETY TYPE' TO 'IGNITION'
SET 'SP SENSE' TO 'AFTER'
SEE OWNER'S MANUAL FOR SETUP PROCEDURE.

NOTES:

265 CODES/STANDARDS-CSA/CMVSS

1B1 CODES/STANDARDS USA

1B1 265

FOR ELECTRICAL
TORQUE
SPECIFICATIONS
SEE DWG NO.
128783-01-000

X-X FOR
ELECTRICAL
CALLOUTS
SEE DWG NO.
121339-01-000

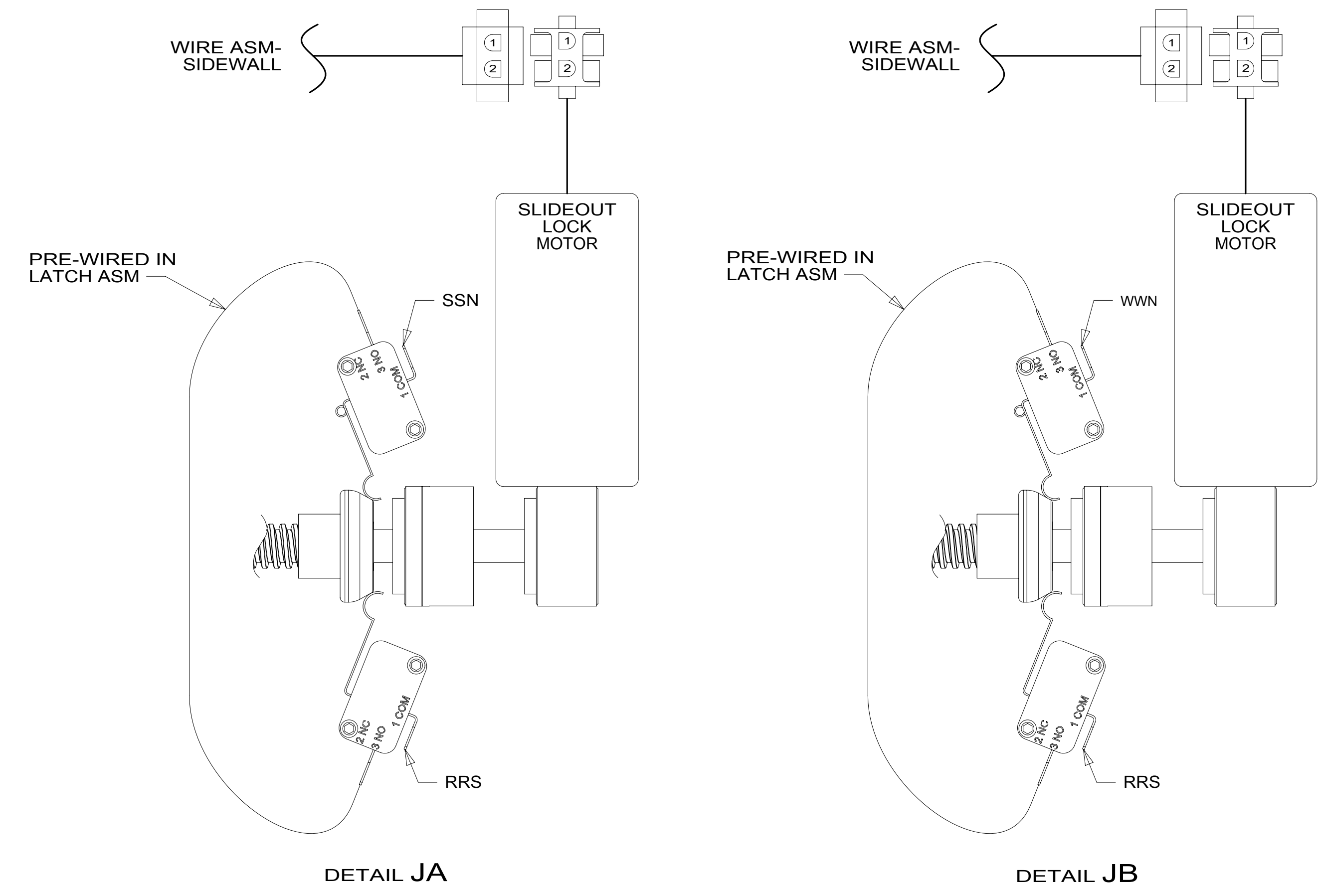
DESCRIPTION:
WIRING INSTL-BODY, 12V

SHEET: 8 OF 9 ITEM/PART NO: 000001620 / 30009801000 REV

8 7 6 5 4 3 2 1 06-Jan-2017

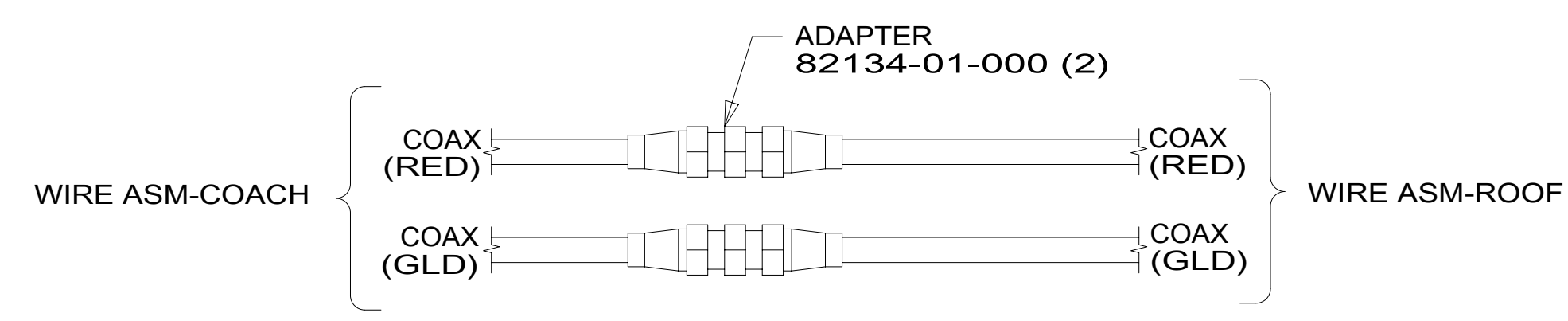
*300098

8 7 6 5 4 3 2 1



DETAIL JA

DETAIL JB



DETAIL JC

- 265 CODES/STANDARDS-CSA/CMVSS
- 1B1 CODES/STANDARDS USA

FOR ELECTRICAL TORQUE SPECIFICATIONS SEE DWG NO. 128783-01-000

X-X FOR ELECTRICAL CALLOUTS SEE DWG NO. 121339-01-000

DESCRIPTION:		1B1 265
WIRING INSTL-BODY, 12V		
SHEET:	ITEM/PART NO.:	REV
9 OF 9	000001620 / 30009801000	

8 7 6 5 4 3 2 1 06-Jan-2017

300098 A