



DANGER

Danger of electrical shock, burns or death. Always remove all power sources before attempting any repair, service or diagnostic work. Power can be present from shore power, generator, inverter or battery. All power sources must be disabled and secured before performing any service.



CAUTION

If you lack the skills, tools or equipment to perform diagnostic or repair work leave such work to an authorized Winnebago Industries dealer or other qualified shop.

DRAWING NO.	MODEL	SHEET
193486-01	170A, 170X	1,2,7
193486-02	170A, 170X	1,3,4,7
193486-03	170C	1,5,7
193486-04	170C	1,6,7

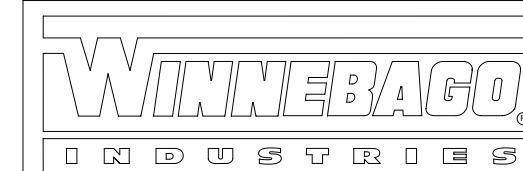
RELEASE	REV/DATE	DWG NO	193486
REV ZONE	REVISION RECORD	DATE	DFT-ORIG

	170X / 170A	170C
CABLE ASM-CHASSIS BATTERY (RED)	192678-02-000	192678-02-000
CABLE ASM-COACH BATTERY (YEL)	141415-59-064	141415-59-048
CABLE ASM-COACH BATTERY (YEL)	141415-59-064	141415-59-025
CABLE ASM-COACH BATTERY GND (BLK)	133566-17-029	133566-17-012
CABLE ASM-GENERATOR (GRN)	141415-42-055	141415-42-055
CABLE ASM-GENERATOR GND (BLK)	133566-17-020	133566-17-020
CABLE ASM-JUMPER,POS	141415-59-022	141415-59-035
CABLE ASM-JUMPER,NEG	133566-12-022	133566-12-035

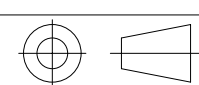
- 12X 1
- 22W
- 22W
- 22W
- 22W

- 12X BATTERY-ONE
- 22W BATTERY-SECOND
- 265 CODES/STANDARDS-CSA/CMVSS
- 1B1 CODES/STANDARDS USA

1B1 265



COPYRIGHT 2014
WINNEBAGO
INDUSTRIES, INC.

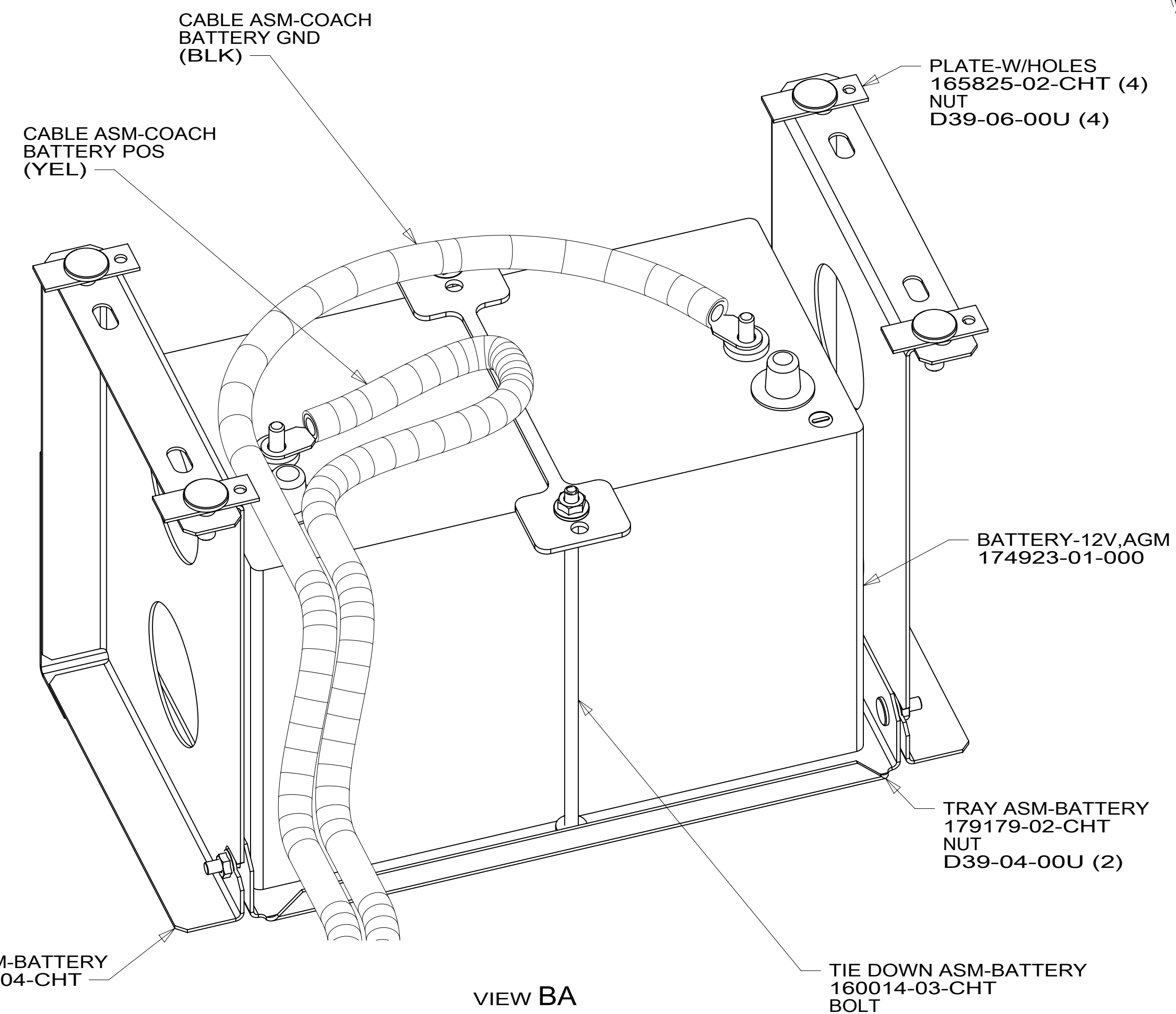
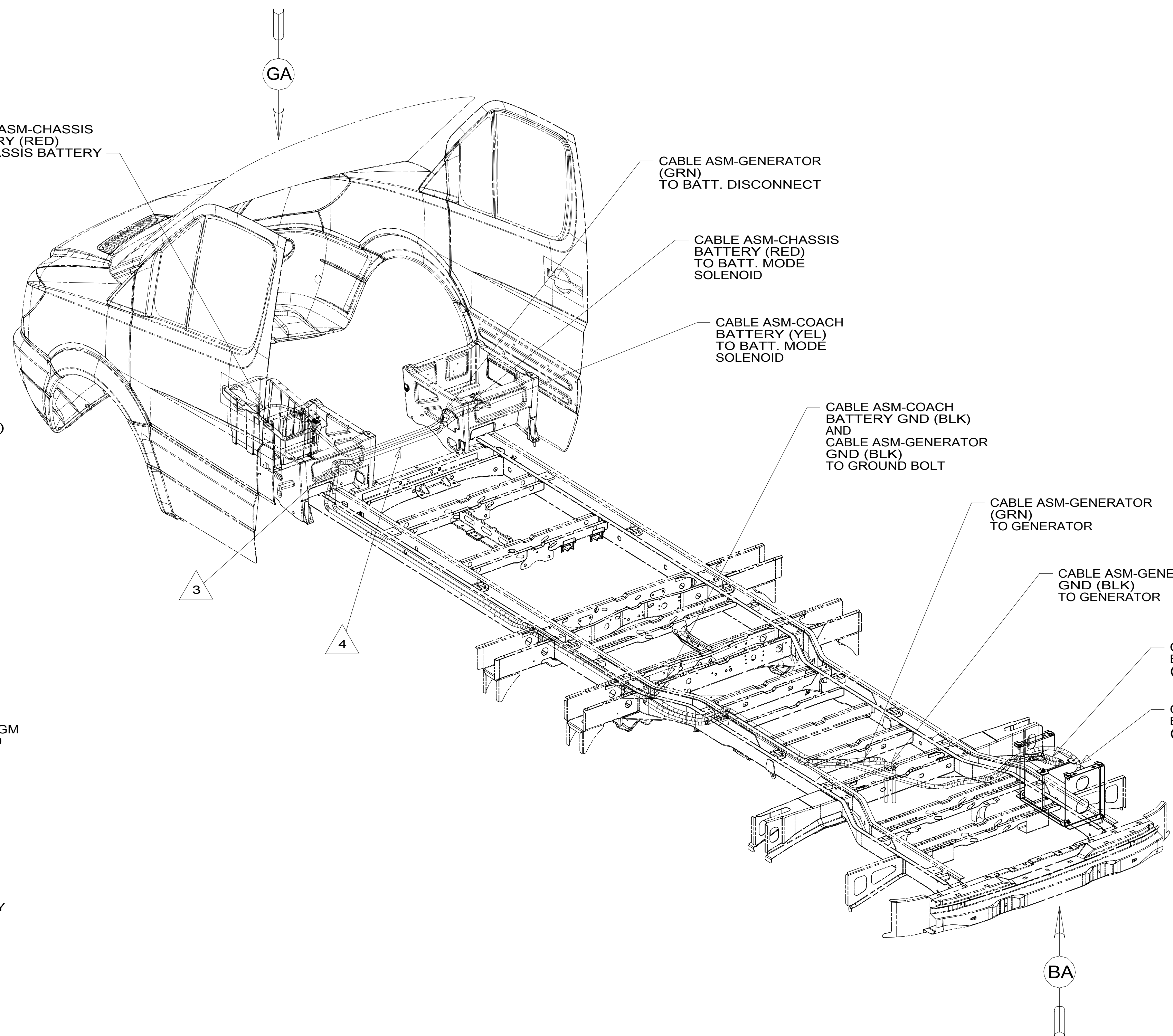
DFT-ORIG	ORIG. DATE
CHKR	ALL DIMENSIONS ARE IN MILLIMETERS
P.E.	
M.E.	
DSNR	16 100-SER
UNSPECIFIED TOLERANCES ARE:	
WHOLE DIM (X) :	MATERIAL:
ONE-PLACE (X.X) :	
TWO-PLACE (X.XX) :	
ANGLE :	
THIRD ANGLE PROJECTION	
DO NOT SCALE DRAWING	REFER TO ES0018 FOR FASTENER TIGHTENING GUIDELINES
TITLE: BATTERY INSTL	
SHEET 1 OF 7	PART NO 193486 REV

FOR ELECTRICAL TORQUE SPECIFICATIONS SEE DWG NO. 128783-01-000

FOR ELECTRICAL CALLOUTS SEE DWG NO. 121339-01-000

NOTES: 1 NOT USED WITH 22W .

193486



VIEW BA

- 4 CABLES ROUTED THROUGH TROUGH BETWEEN CAB SEATS IN THIS AREA.
- 3 ROUTE CABLES THROUGH GROMMET UNDER DRIVERS SEAT.

2. SEE WIRING INSTL-CHASSIS FOR ADDITIONAL INFORMATION.
1. AT MINIMUM ALL WIRES TO BE SUPPORTED AND SECURED PER CODE REQUIREMENTS. USE CLAMP 10495 OR 10497 OR WIRE TIE 8343 OR 108046 AND SCREW G67-XX-XXX OR G56-XX-XXX AS APPROPRIATE FOR INSTALLATION.

NOTES:

- 12X BATTERY-ONE
- 265 CODES/STANDARDS-CSA/CMVSS
- 1B1 CODES/STANDARDS USA

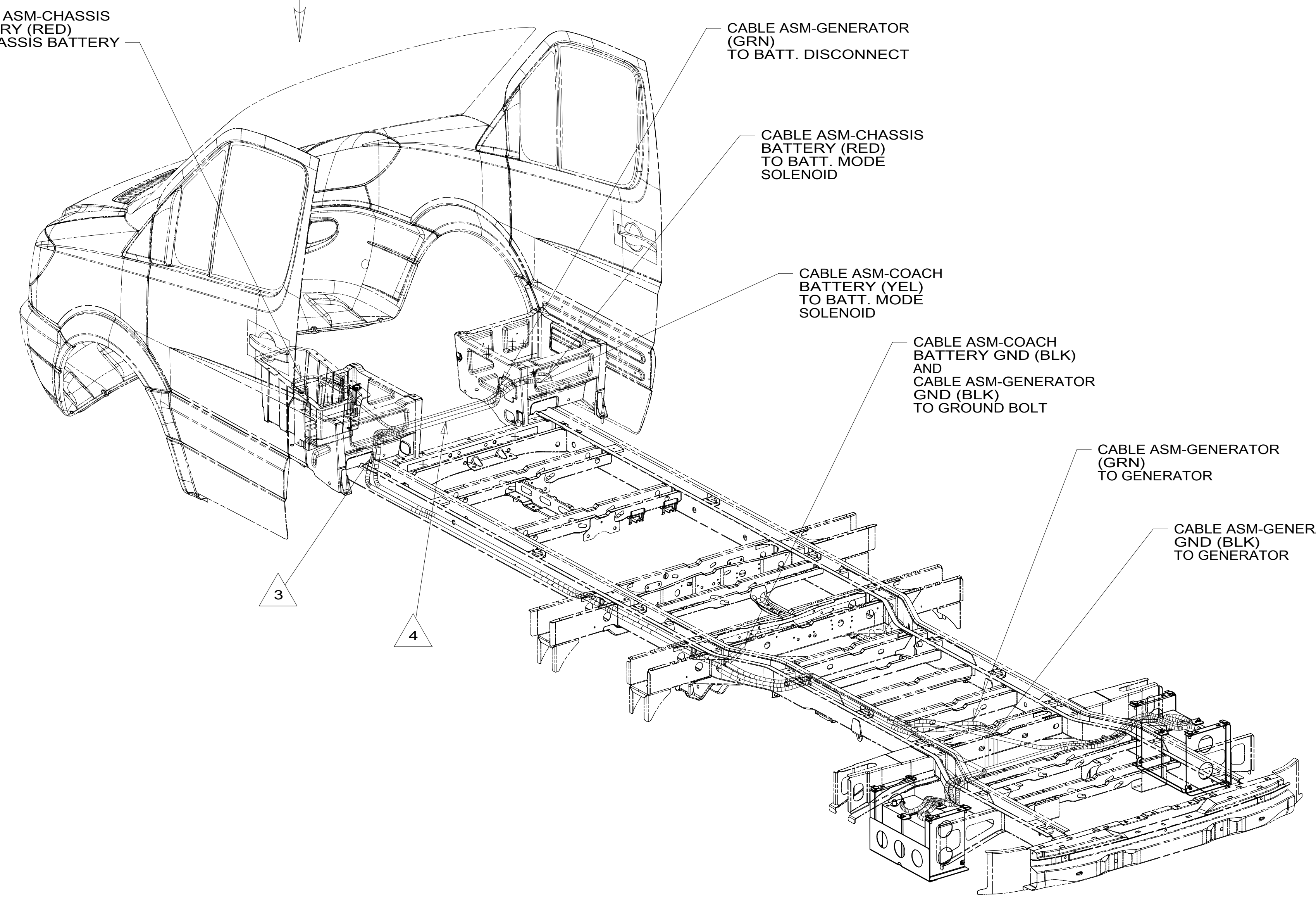
1B1 265 12X

FIRST USED	
16 100-SER	
DO NOT SCALE DRAWING	
TITLE: BATTERY INSTL	
SHEET 2	PART NO 193486 REV
1 12-Oct-2015	

FOR ELECTRICAL TORQUE SPECIFICATIONS SEE DWG NO. 128783-01-000

FOR ELECTRICAL CALLOUTS SEE DWG NO. 121339-01-000

193486



- 4 CABLES ROUTED THROUGH TROUGH BETWEEN CAB SEATS IN THIS AREA.
- 3 ROUTE CABLES THROUGH GROMMET UNDER DRIVERS SEAT.
2. SEE WIRING INSTL-CHASSIS FOR ADDITIONAL INFORMATION.
1. AT MINIMUM ALL WIRES TO BE SUPPORTED AND SECURED PER CODE REQUIREMENTS. USE CLAMP 10495 OR 10497 OR WIRE TIE 8343 OR 108046 AND SCREW G67-XX-XXX OR G56-XX-XXX AS APPROPRIATE FOR INSTALLATION.

NOTES:

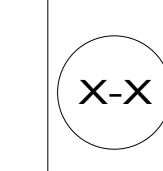
- 22W BATTERY-SECOND
- 265 CODES/STANDARDS-CSA/CMVSS
- 1B1 CODES/STANDARDS USA

1B1 265 22W

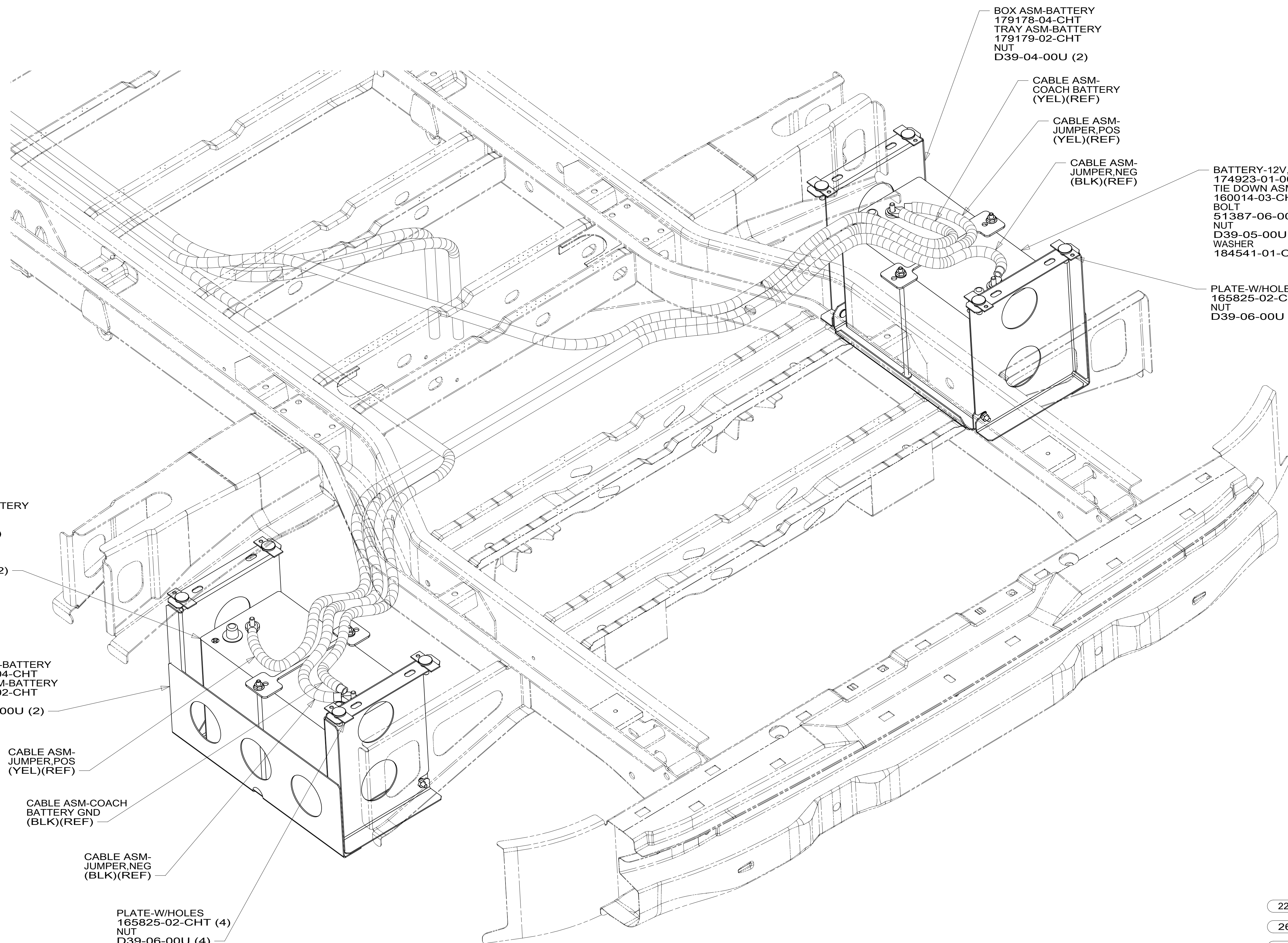
FIRST USED	
13 100-SER	
DO NOT SCALE DRAWING	
TITLE: BATTERY INSTL	
SHEET 3	PART NO 193486 REV
1 12-Oct-2015	

FOR ELECTRICAL TORQUE SPECIFICATIONS SEE DWG NO. 128783-01-000

FOR ELECTRICAL CALLOUTS SEE DWG NO. 121339-01-000



193486



BOX ASM-BATTERY
179178-04-CHT
TRAY ASM-BATTERY
179179-02-CHT
NUT
D39-04-00U (2)

CABLE ASM-COACH BATTERY
(YEL)(REF)

CABLE ASM-JUMPER,POS
(YEL)(REF)

CABLE ASM-JUMPER,NEG
(BLK)(REF)

BATTERY-12V,AGM
174923-01-000
TIE DOWN ASM-BATTERY
160014-03-CHT
BOLT
51387-06-000 (2)
NUT
D39-05-00U (2)
WASHER
184541-01-CHT (2)

PLATE-W/HOLES
165825-02-CHT (4)
NUT
D39-06-00U (4)

BATTERY-12V,AGM
174923-01-000
TIE DOWN ASM-BATTERY
160014-03-CHT
BOLT
51387-06-000 (2)
NUT
D39-05-00U (2)
WASHER-RUBBER
184541-01-CHT (2)

BOX ASM-BATTERY
179178-04-CHT
TRAY ASM-BATTERY
179179-02-CHT
NUT
D39-04-00U (2)

CABLE ASM-JUMPER,POS
(YEL)(REF)

CABLE ASM-COACH BATTERY GND
(BLK)(REF)

CABLE ASM-JUMPER,NEG
(BLK)(REF)

PLATE-W/HOLES
165825-02-CHT (4)
NUT
D39-06-00U (4)

VIEW DA

2. SEE WIRING INSTL-CHASSIS FOR ADDITIONAL INFORMATION.

1. AT MINIMUM ALL WIRES TO BE SUPPORTED AND SECURED PER CODE REQUIREMENTS. USE CLAMP 10495 OR 10497 OR WIRE TIE 8343 OR 108046 AND SCREW G67-XX-XXX OR G56-XX-XXX AS APPROPRIATE FOR INSTALLATION.

NOTES:

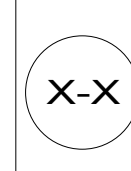
- 22W BATTERY-SECOND
- 265 CODES/STANDARDS-CSA/CMVSS
- 1B1 CODES/STANDARDS USA

1B1 265 22W

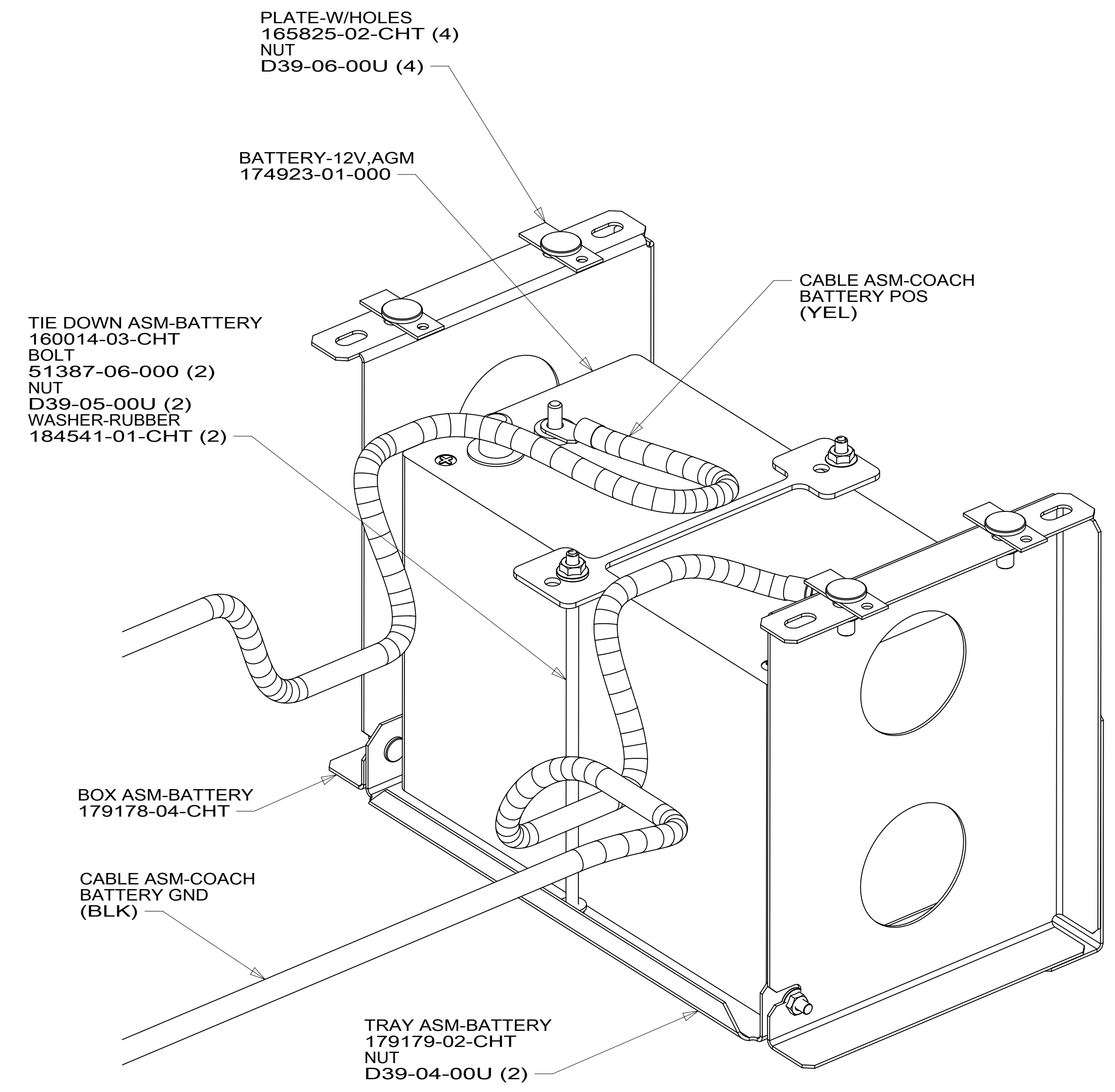
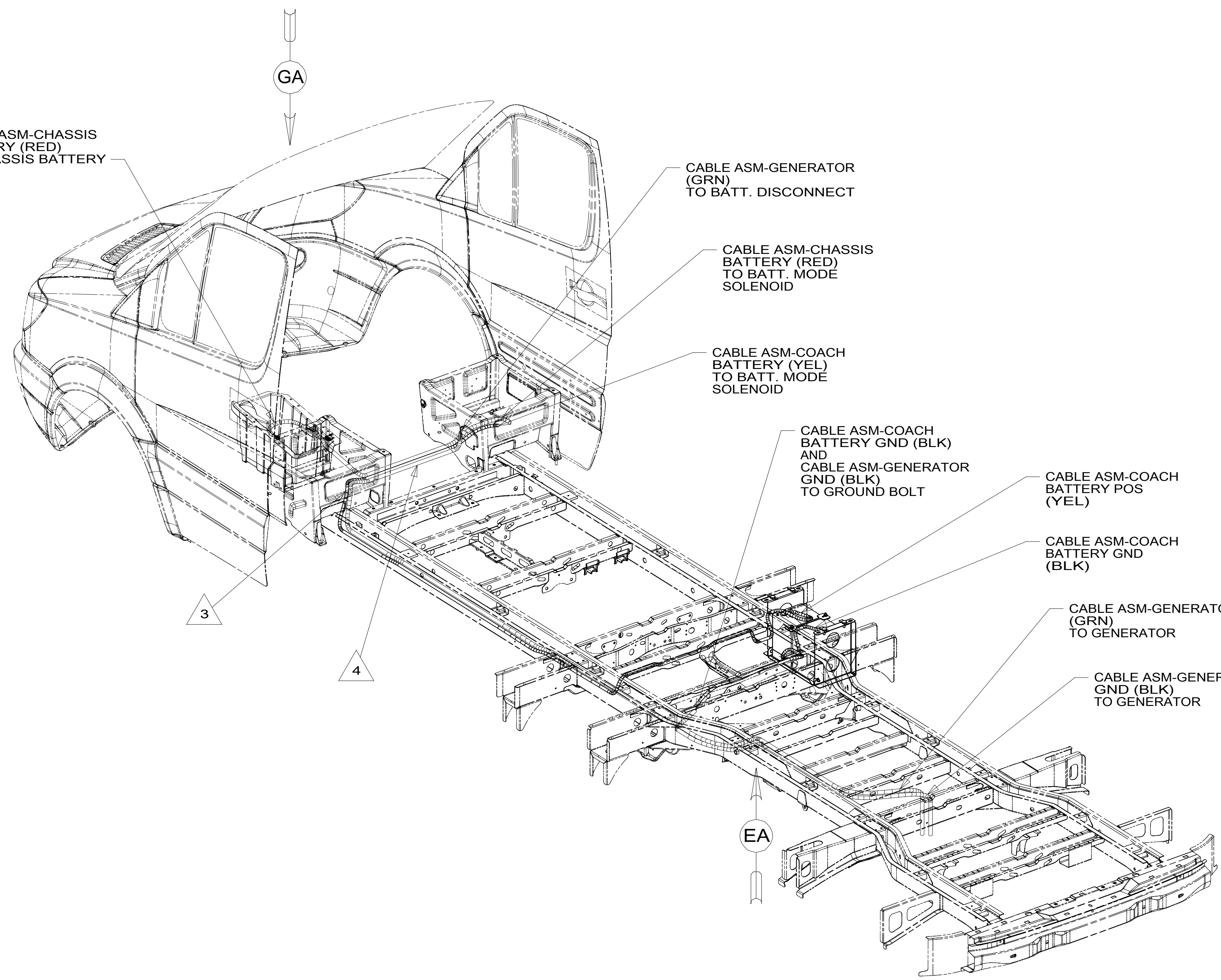
FIRST USED	
13 100-SER	
DO NOT SCALE DRAWING	
TITLE: BATTERY INSTL	
SHEET 4	PART NO 193486 REV

FOR ELECTRICAL TORQUE SPECIFICATIONS SEE DWG NO. 128783-01-000

FOR ELECTRICAL CALLOUTS SEE DWG NO. 121339-01-000



* 193486 *



VIEW EA

- 4 CABLES ROUTED THROUGH TROUGH BETWEEN CAB SEATS IN THIS AREA.
- 3 ROUTE CABLES THROUGH GROMMET UNDER DRIVERS SEAT.

2. SEE WIRING INSTL-CHASSIS FOR ADDITIONAL INFORMATION.
1. AT MINIMUM ALL WIRES TO BE SUPPORTED AND SECURED PER CODE REQUIREMENTS. USE CLAMP 10495 OR 10497 OR WIRE TIE 8343 OR 108046 AND SCREW G67-XX-XXX OR G56-XX-XXX AS APPROPRIATE FOR INSTALLATION.

NOTES:

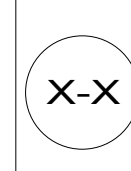
- 12X BATTERY-ONE
- 265 CODES/STANDARDS-CSA/CMVSS
- 1B1 CODES/STANDARDS USA

1B1 265 12X

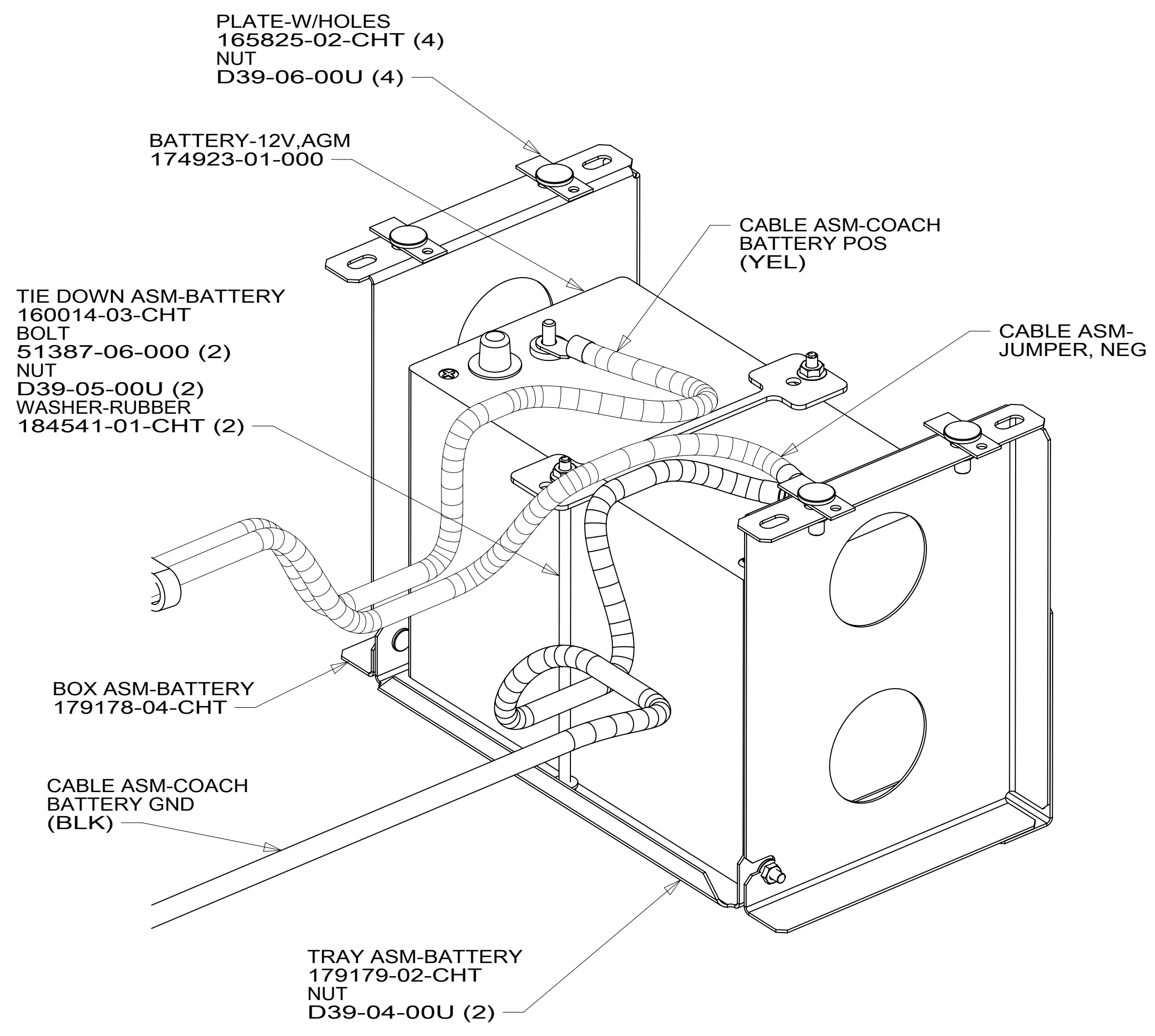
FIRST USED	
16 100-SER	
DO NOT SCALE DRAWING	
TITLE: BATTERY INSTL	
SHEET 5	PART NO 193486 REV
1 12-Oct-2015	

FOR ELECTRICAL TORQUE SPECIFICATIONS SEE DWG NO. 128783-01-000

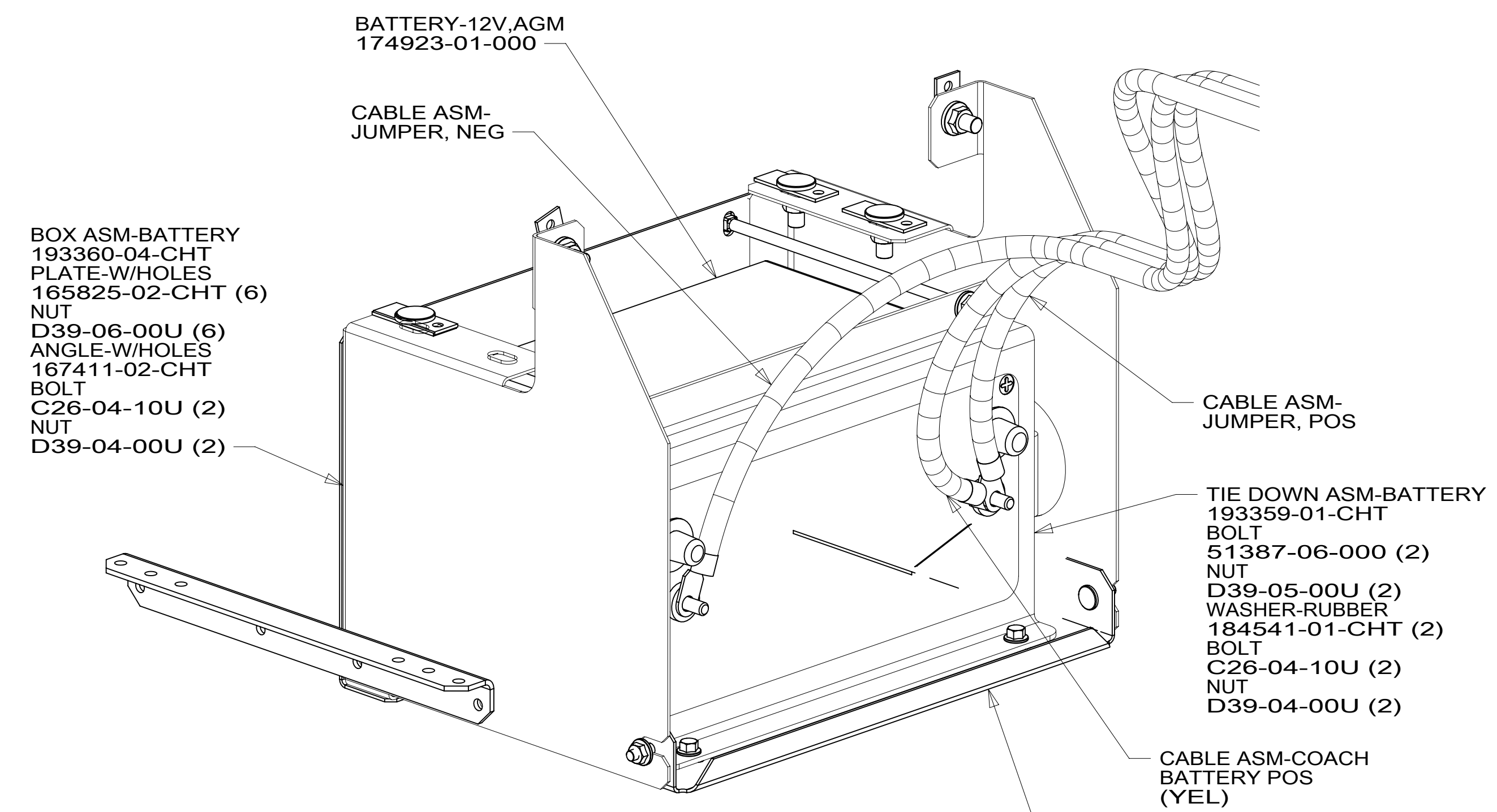
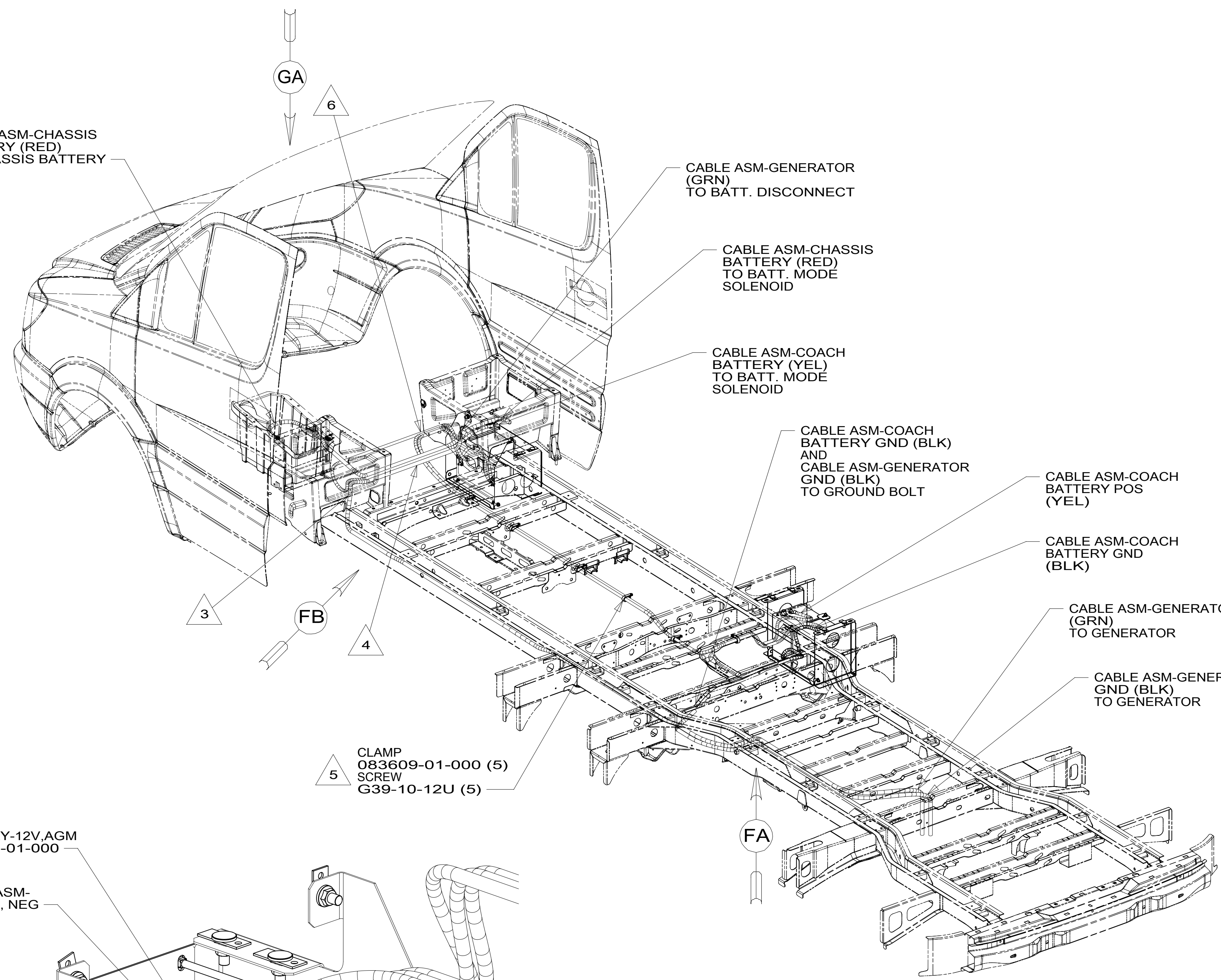
FOR ELECTRICAL CALLOUTS SEE DWG NO. 121339-01-000



193486



VIEW FA



VIEW FB

- NOTES:
1. AT MINIMUM ALL WIRES TO BE SUPPORTED AND SECURED PER CODE REQUIREMENTS. USE CLAMP 10495 OR 10497 OR WIRE TIE 8343 OR 108046 AND SCREW G67-XX-XXX OR G56-XX-XXX AS APPROPRIATE FOR INSTALLATION.
 2. SEE WIRING INSTL-CHASSIS FOR ADDITIONAL INFORMATION.
- 6 ROUTE CABLES OVER EXHAUST HEAT SHIELD AND DRIVETRAIN. SECURE CABLES SO THAT THEY DO NOT CONTACT HEAT SHIELD AND DRIVETRAIN.
 - 5 USE CLAMPS TO SECURE CABLES TO CROSSMEMBERS. KEEP CABLES CLEAR FROM EXHAUST AND DRIVETRAIN.
 - 4 CABLES ROUTED THROUGH TROUGH BETWEEN CAB SEATS IN THIS AREA.
 - 3 ROUTE CABLES THROUGH GROMMET UNDER DRIVERS SEAT.

FOR ELECTRICAL
TORQUE
SPECIFICATIONS
SEE DWG NO.
128783-01-000

FOR
ELECTRICAL
CALLOUTS
SEE DWG NO.
121339-01-000

- 22W BATTERY-SECOND
- 265 CODES/STANDARDS-CSA/CMVSS
- 1B1 CODES/STANDARDS USA

1B1	265	22W
FIRST USED		
16 100-SER		
DO NOT SCALE DRAWING		
TITLE: BATTERY INSTL		
SHEET 6	PART NO 193486	REV

193486

NUT
OMD29K-08-000



CABLE ASM-
CHASSIS BATTERY

2. SEE WIRING INSTL-CHASSIS FOR ADDITIONAL INFORMATION.

1. AT MINIMUM ALL WIRES TO BE SUPPORTED AND SECURED PER CODE REQUIREMENTS. USE CLAMP 10495 OR 10497 OR WIRE TIE 8343 OR 108046 AND SCREW G67-XX-XXX OR G56-XX-XXX AS APPROPRIATE FOR INSTALLATION.

NOTES:

VIEW GA

FOR ELECTRICAL
TORQUE
SPECIFICATIONS
SEE DWG NO.
128783-01-000

FOR
ELECTRICAL
CALLOUTS
SEE DWG NO.
121339-01-000

265 CODES/STANDARDS-CSA/CMVSS

1B1 CODES/STANDARDS USA

1B1 265

FIRST USED	16 100-SER	
DO NOT SCALE DRAWING		
TITLE:	BATTERY INSTL	
SHEET 7	PART NO	193486
	REV	