



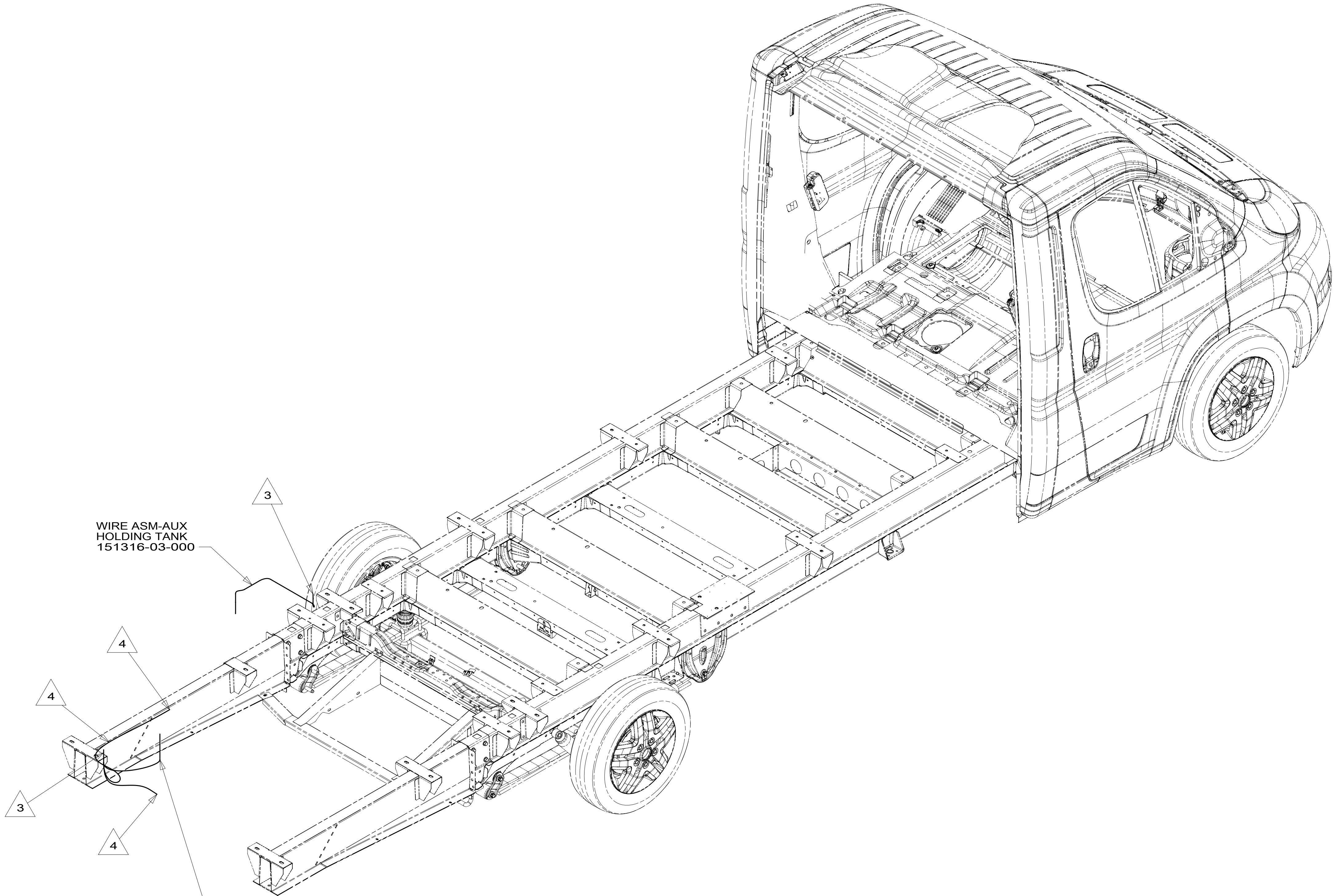
**DANGER**

**Danger of electrical shock, burns or death.** Always remove all power sources before attempting any repair, service or diagnostic work. Power can be present from shore power, generator, inverter or battery. All power sources must be disabled and secured before performing any service.



**CAUTION**

If you lack the skills, tools or equipment to perform diagnostic or repair work leave such work to an authorized Winnebago Industries dealer or other qualified shop.



- 4 TO TANK HEATER PADS WITH 23R OR 23T
- 3 WIRE PASSES THROUGH FLOOR IN THIS AREA.
- ROUTE TANK SENSOR WIRES SO THEY DO NOT PASSOVER SENSORS. USE WIRE TIE MOUNT 155366-01-000 AND WIRE TIE 8343-01-000 AS NEEDED. TANK SURFACE MUST BE CLEANED USING ISOPROPYL ALCOHOL AND PRIMED WITH PRIMER 94.
  - AT MINIMUM ALL WIRES TO BE SUPPORTED AND SECURED PER CODE REQUIREMENTS. USE CLAMP 10495 OR 10497 OR WIRE TIE 8343 OR 108046 AND SCREW G67-XX-XXX OR G56-XX-XXX AS APPROPRIATE FOR INSTALLATION.

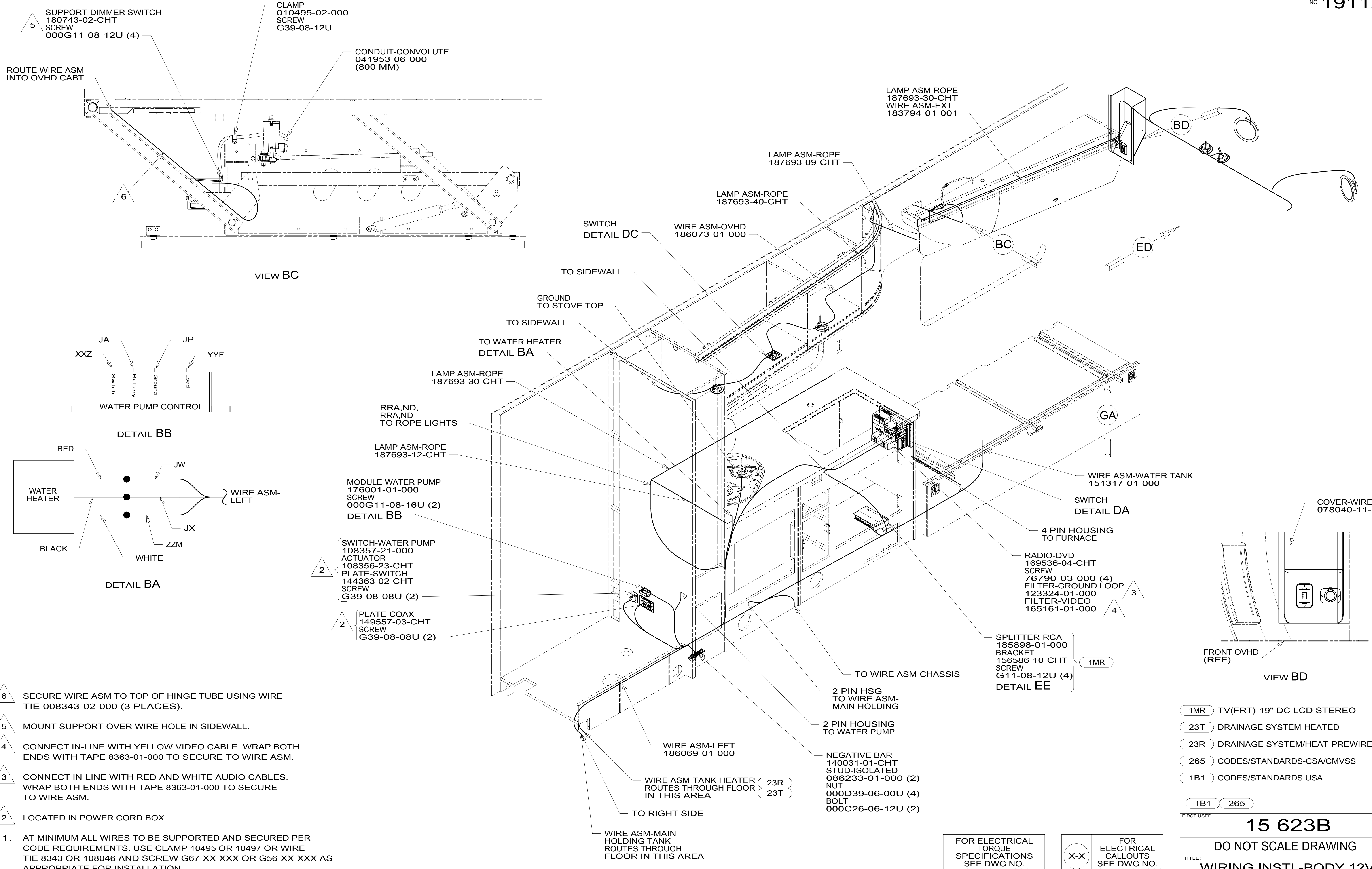
- 23R DRAINAGE SYSTEM/HEAT-PREWIRE
  - 23T DRAINAGE SYSTEM-HEATED
  - 265 CODES/STANDARDS-CSA/CMVSS
  - 1B1 CODES/STANDARDS USA
- 1B1 265

<b>WINNEBAGO</b>		COPYRIGHT 2014 WINNEBAGO INDUSTRIES, INC.	
DFT-ORIG	ORIG. DATE	ALL DIMENSIONS ARE IN MILLIMETERS	
CHKR		15 623B	
P.E.		MATERIAL:	
M.E.	FIRST USED	UNSPECIFIED TOLERANCES ARE:	
DSNR		WHOLE DIM (X) : 3	
		ONE-PLACE (X.X) : 1.5	
		TWO-PLACE (X.XX) : 0.50	
		ANGLE : 1°	
		THIRD ANGLE PROJECTION	
DO NOT SCALE DRAWING		REFER TO ES0018 FOR FASTENER TIGHTENING GUIDELINES	
TITLE: WIRING INSTL-BODY, 12V			
SHEET 1 OF 7	PART NO 191124	REV	
REF:		1 20-May-2015	

FOR ELECTRICAL TORQUE SPECIFICATIONS SEE DWG NO. 128783-01-000

FOR ELECTRICAL CALLOUTS SEE DWG NO. 121339-01-000

\*191124\*



- NOTES:**
- AT MINIMUM ALL WIRES TO BE SUPPORTED AND SECURED PER CODE REQUIREMENTS. USE CLAMP 10495 OR 10497 OR WIRE TIE 8343 OR 108046 AND SCREW G67-XX-XXX OR G56-XX-XXX AS APPROPRIATE FOR INSTALLATION.
  - LOCATED IN POWER CORD BOX.
  - CONNECT IN-LINE WITH RED AND WHITE AUDIO CABLES. WRAP BOTH ENDS WITH TAPE 8363-01-000 TO SECURE TO WIRE ASM.
  - CONNECT IN-LINE WITH YELLOW VIDEO CABLE. WRAP BOTH ENDS WITH TAPE 8363-01-000 TO SECURE TO WIRE ASM.
  - MOUNT SUPPORT OVER WIRE HOLE IN SIDEWALL.
  - SECURE WIRE ASM TO TOP OF HINGE TUBE USING WIRE TIE 008343-02-000 (3 PLACES).

- 1MR TV(FRT)-19" DC LCD STEREO
- 23T DRAINAGE SYSTEM-HEATED
- 23R DRAINAGE SYSTEM/HEAT-PREWIRED
- 265 CODES/STANDARDS-CSA/CMVSS
- 1B1 CODES/STANDARDS USA

FIRST USED		<b>15 623B</b>	
<b>DO NOT SCALE DRAWING</b>			
<b>WIRING INSTL-BODY, 12V</b>			
SHEET 2	PART NO	191124	REV
		1 20-May-2015	

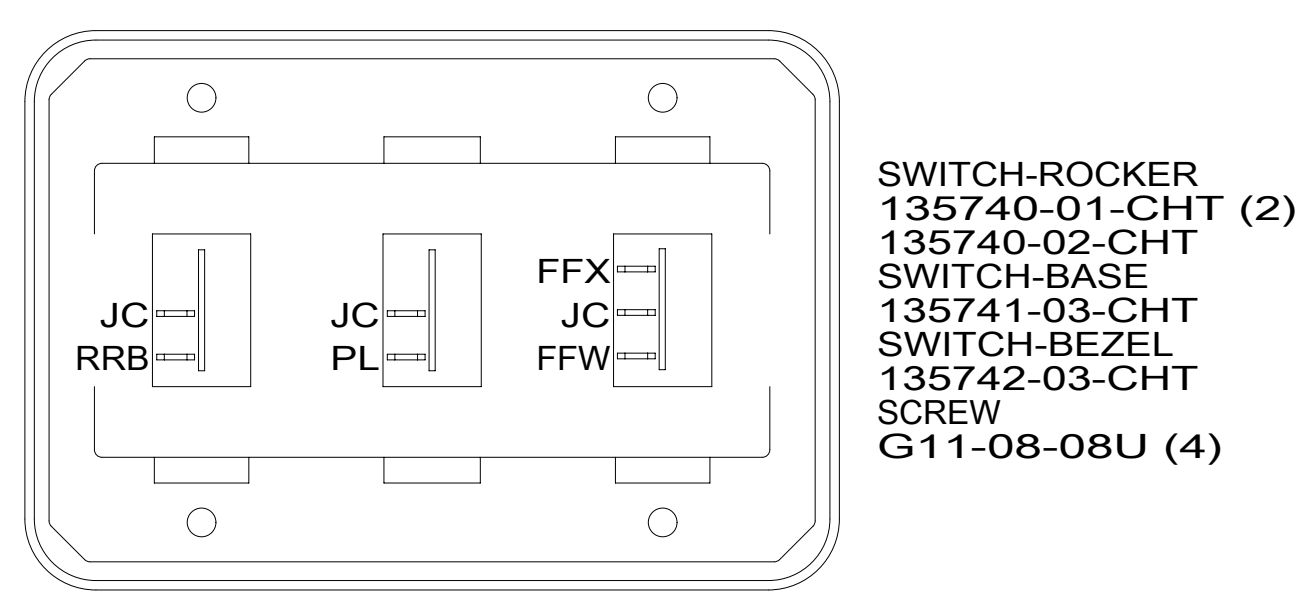
FOR ELECTRICAL TORQUE SPECIFICATIONS SEE DWG NO. 128783-01-000

FOR ELECTRICAL CALLOUTS SEE DWG NO. 121339-01-000

\*191124\*

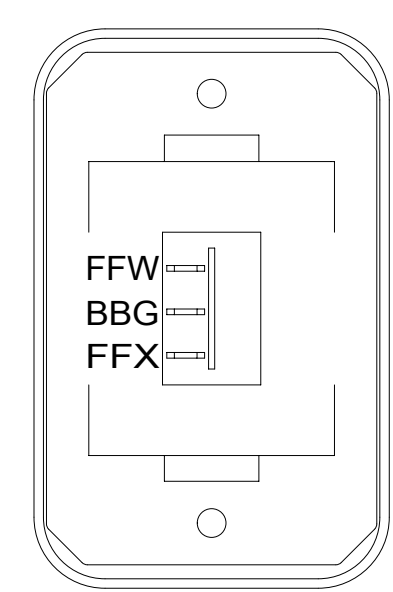






SWITCH-ROCKER  
135740-01-CHT (2)  
135740-02-CHT  
SWITCH-BASE  
135741-03-CHT  
SWITCH-BEZEL  
135742-03-CHT  
SCREW  
G11-08-08U (4)

DETAIL DA



SWITCH-ROCKER  
135740-02-CHT  
SWITCH-BASE  
135741-01-CHT  
SWITCH-BEZEL  
135742-01-CHT  
SCREW  
G11-08-08U (2)

DETAIL DE

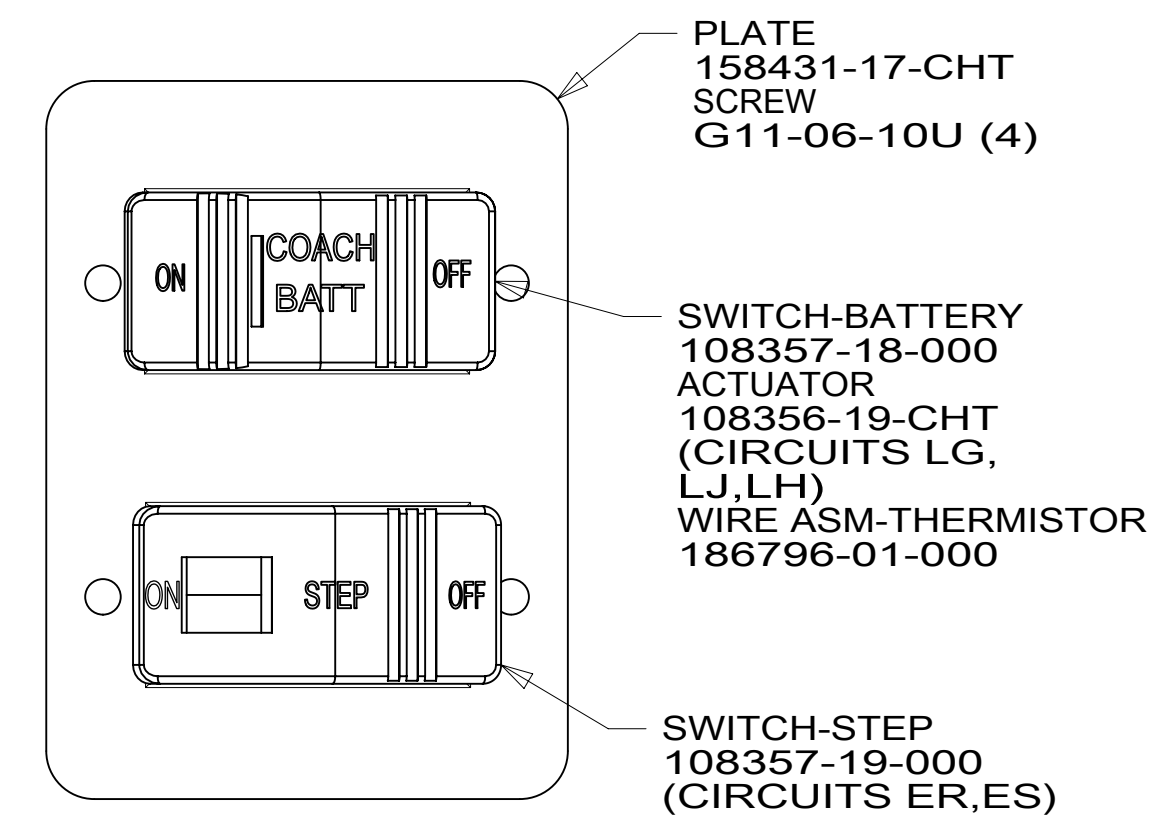
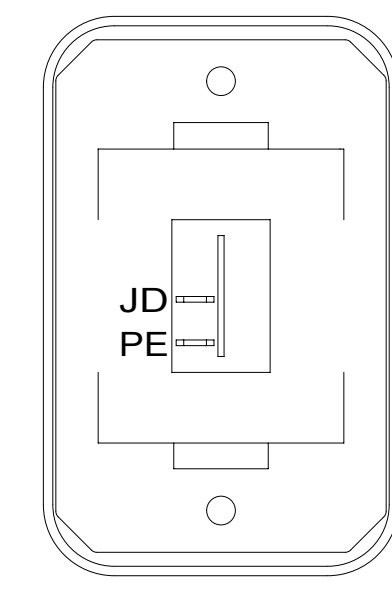


PLATE  
158431-17-CHT  
SCREW  
G11-06-10U (4)

SWITCH-BATTERY  
108357-18-000  
ACTUATOR  
108356-19-CHT  
(CIRCUITS LG,  
LJ, LH)  
WIRE ASM-THERMISTOR  
186796-01-000

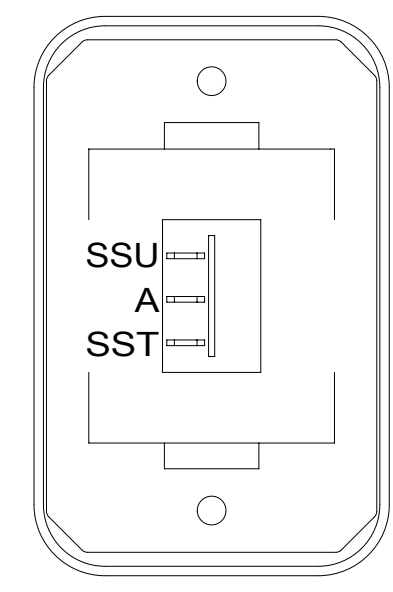
SWITCH-STEP  
108357-19-000  
(CIRCUITS ER,ES)

DETAIL DJ



SWITCH-ROCKER  
135740-01-CHT  
SWITCH-BASE  
135741-01-CHT  
SWITCH-BEZEL  
135742-01-CHT  
SCREW  
G11-08-08U (2)

DETAIL DB



SWITCH-ROCKER  
135740-02-CHT  
SWITCH-BASE  
135741-01-CHT  
SWITCH-BEZEL  
135742-01-CHT  
SCREW  
G11-08-08U (2)

DETAIL DF

SWITCH-AWNING  
108357-06-000  
ACTUATOR  
108356-12-CHT  
RELAY  
063912-02-000  
SCREW  
G11-08-12U

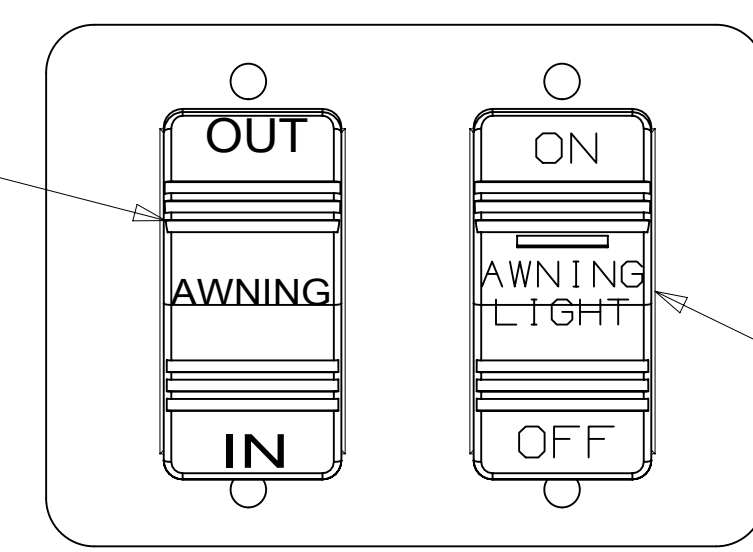
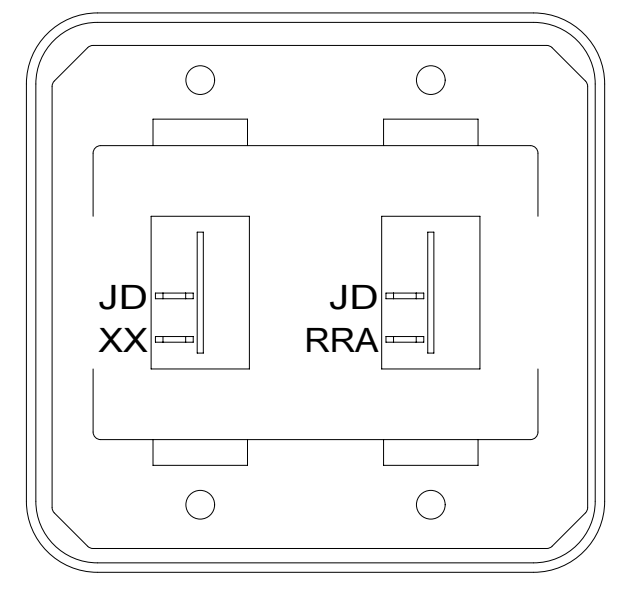


PLATE  
158431-17-CHT  
SCREW  
G11-08-12U (4)

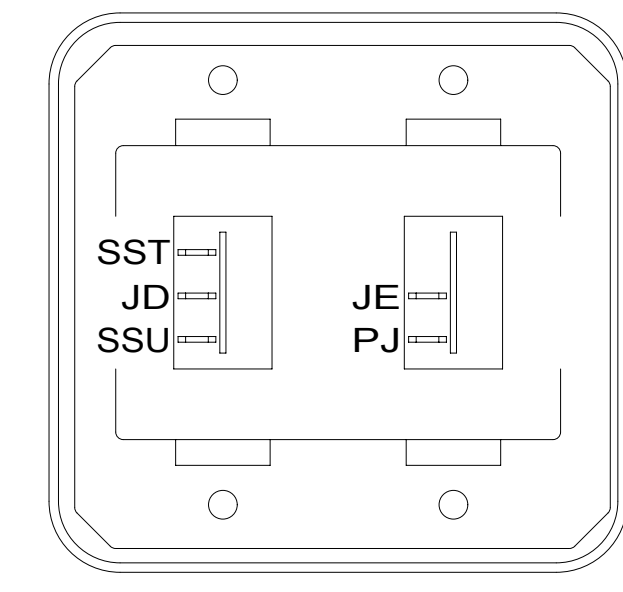
SWITCH-AWN.LIGHT  
108357-14-000  
ACTUATOR  
108356-28-CHT

DETAIL DL



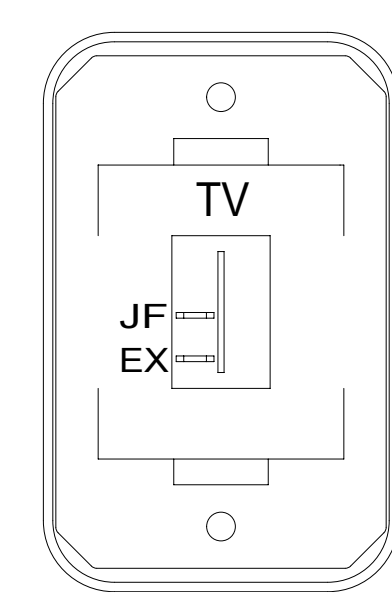
SWITCH-ROCKER  
135740-01-CHT (2)  
SWITCH-BASE  
135741-02-CHT  
SWITCH-BEZEL  
135742-02-CHT  
SCREW  
G11-08-08U (4)

DETAIL DC



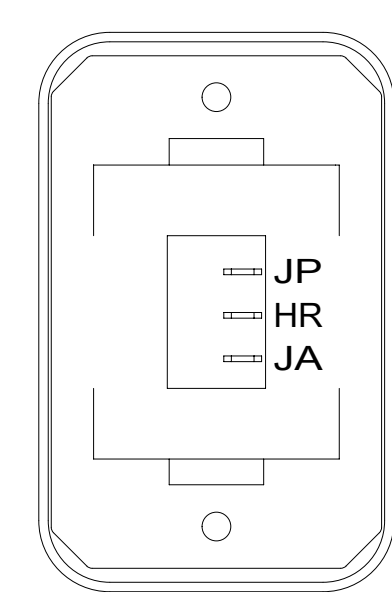
SWITCH-ROCKER  
135740-01-CHT  
135740-02-CHT  
SWITCH-BASE  
135741-02-CHT  
SWITCH-BEZEL  
135742-02-CHT  
SCREW  
G11-08-08U (4)

DETAIL DG



SWITCH-ROCKER  
135740-01-CHT  
SWITCH-BASE  
135741-01-CHT  
SWITCH-BEZEL  
135742-45-CHT  
SCREW  
G11-08-08U (2)

DETAIL DD

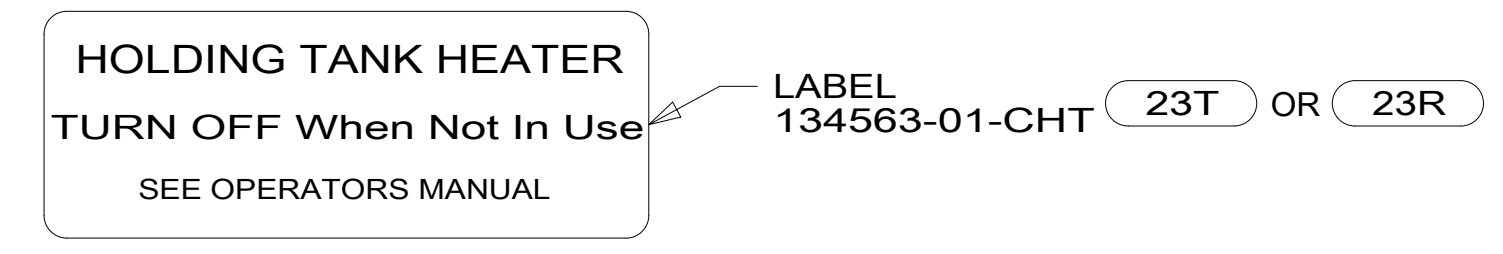


SWITCH-ROCKER  
135740-06-CHT  
SWITCH-BLANK  
138253-01-CHT  
SWITCH-BASE  
135741-01-CHT  
SWITCH-BEZEL  
135742-01-CHT  
SCREW  
G11-08-08U (2)

23T OR 23R

1

DETAIL DH



LABEL  
134563-01-CHT 23T OR 23R

NOTES:  
1 WITHOUT 23T OR 23R

FOR ELECTRICAL  
TORQUE  
SPECIFICATIONS  
SEE DWG NO.  
128783-01-000

FOR  
ELECTRICAL  
CALLOUTS  
SEE DWG NO.  
121339-01-000

- 23R DRAINAGE SYSTEM/HEAT-PREWIRE
- 23T DRAINAGE SYSTEM-HEATED
- 265 CODES/STANDARDS-CSA/CMVSS
- 1B1 CODES/STANDARDS USA

FIRST USED	
<b>15 623B</b>	
<b>DO NOT SCALE DRAWING</b>	
<b>TITLE: WIRING INSTL-BODY, 12V</b>	
SHEET 4	PART NO <b>191124</b> REV

\*191124\*

8

7

6

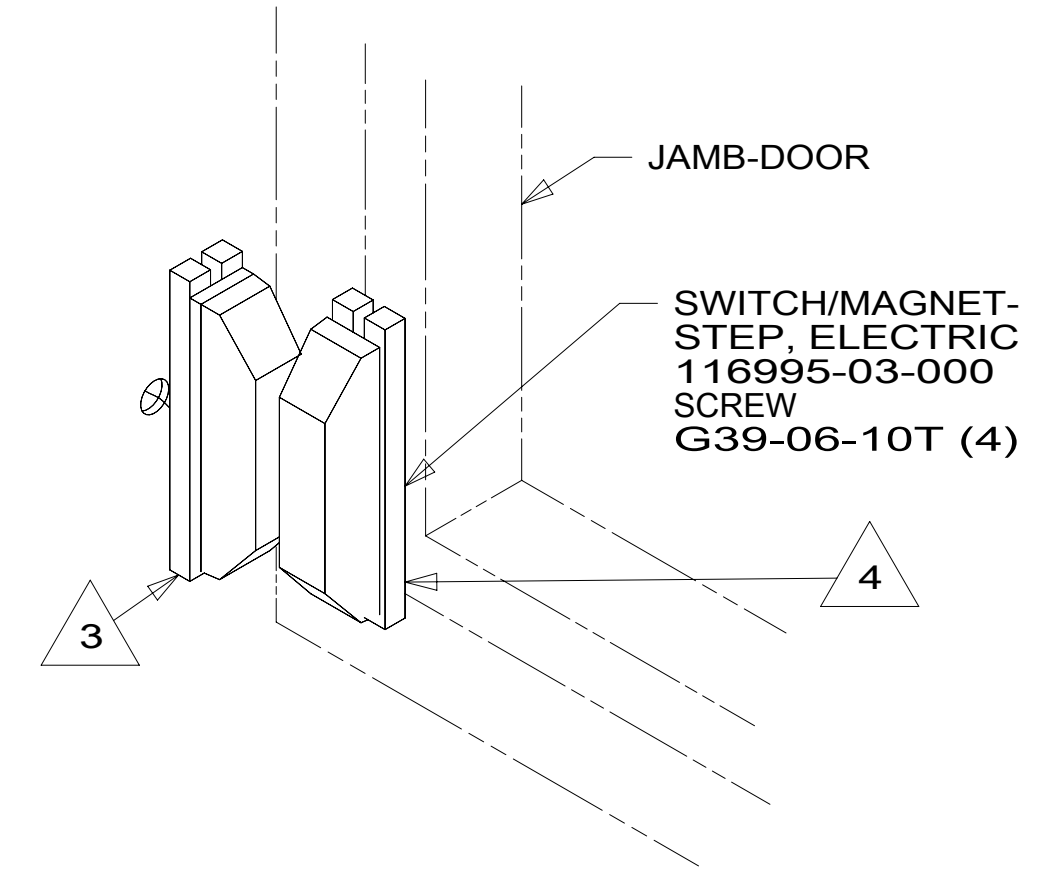
5

4

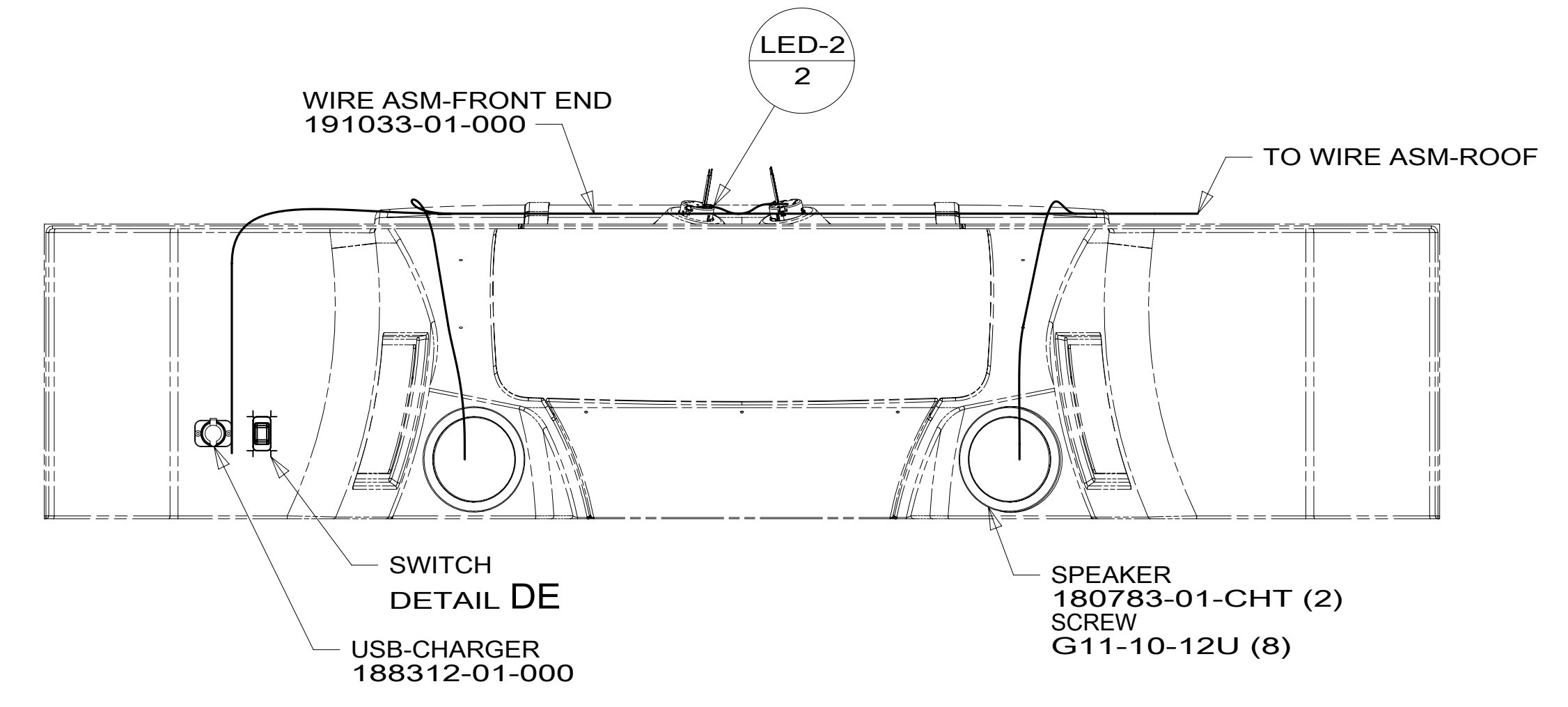
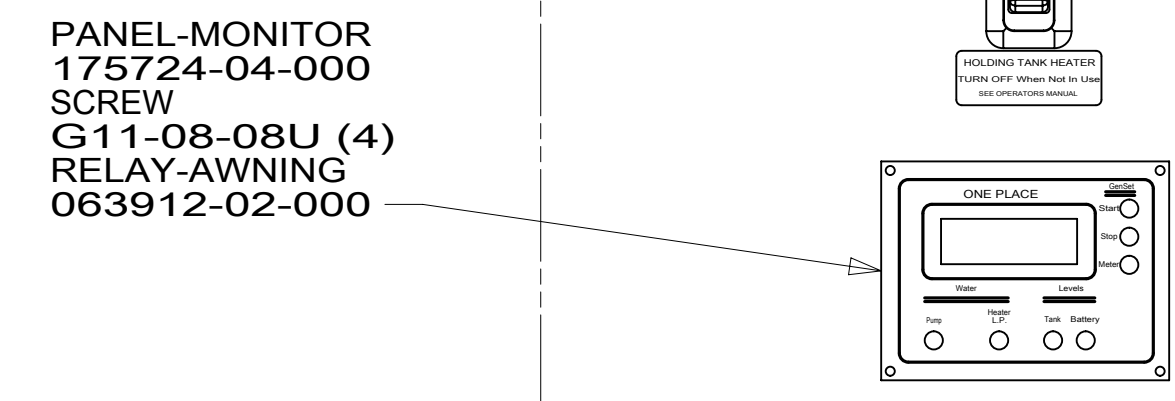
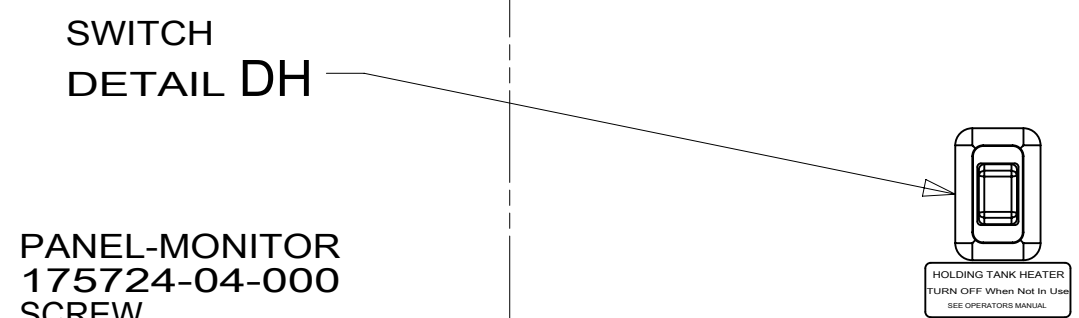
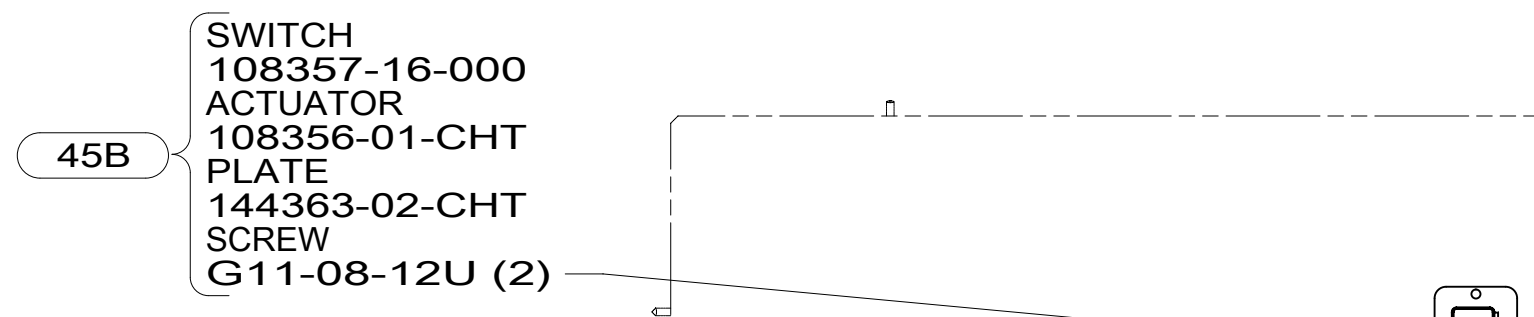
3

2

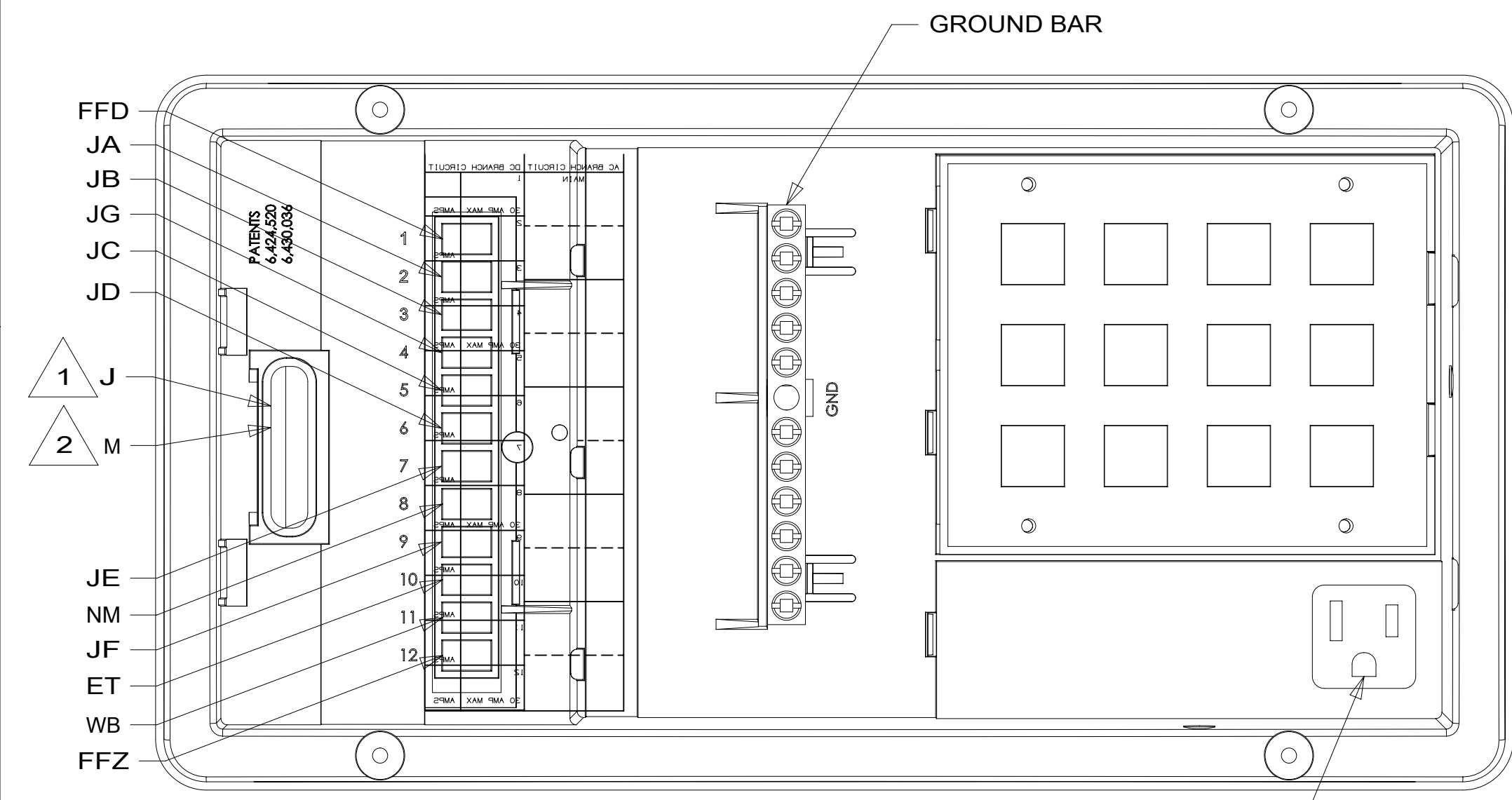
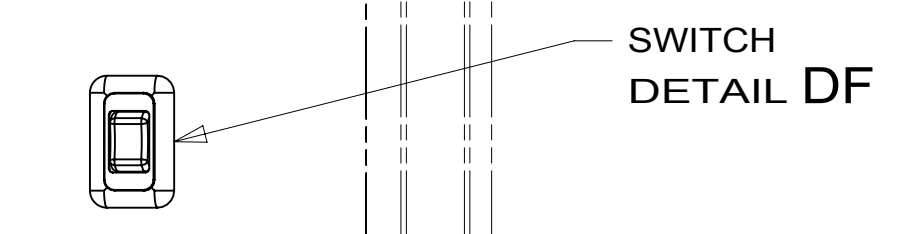
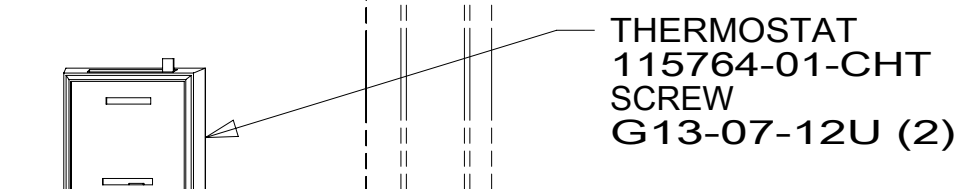
1



DETAIL EB 1E2

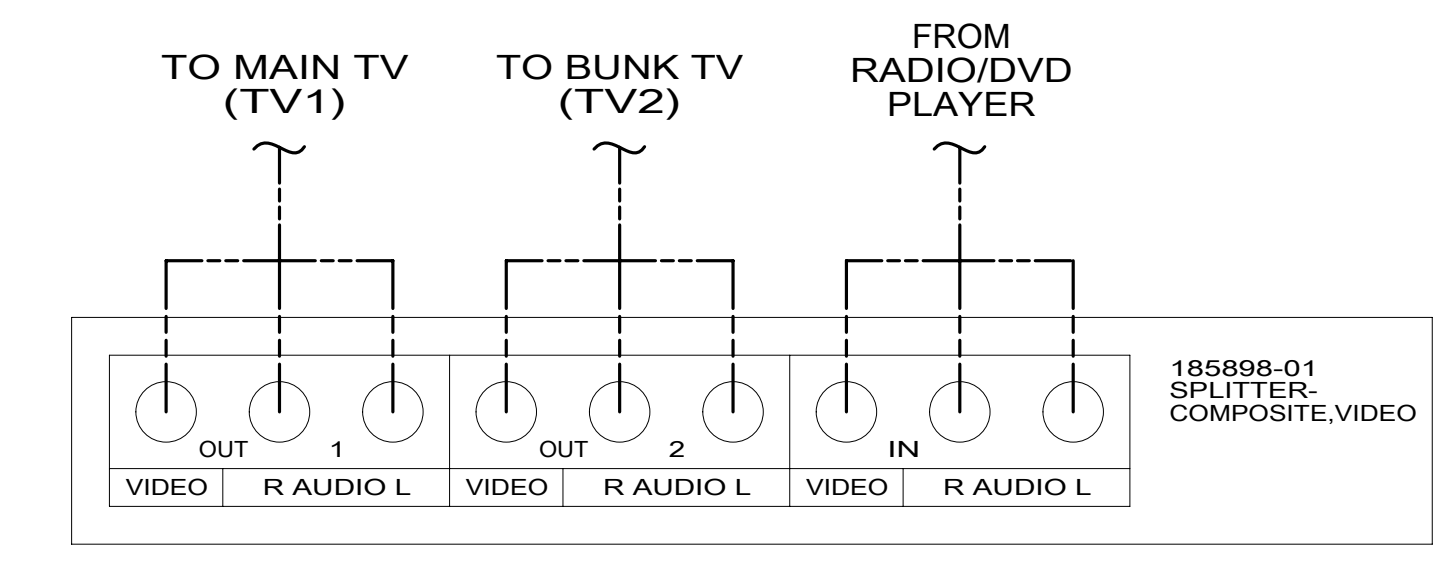


DETAIL ED



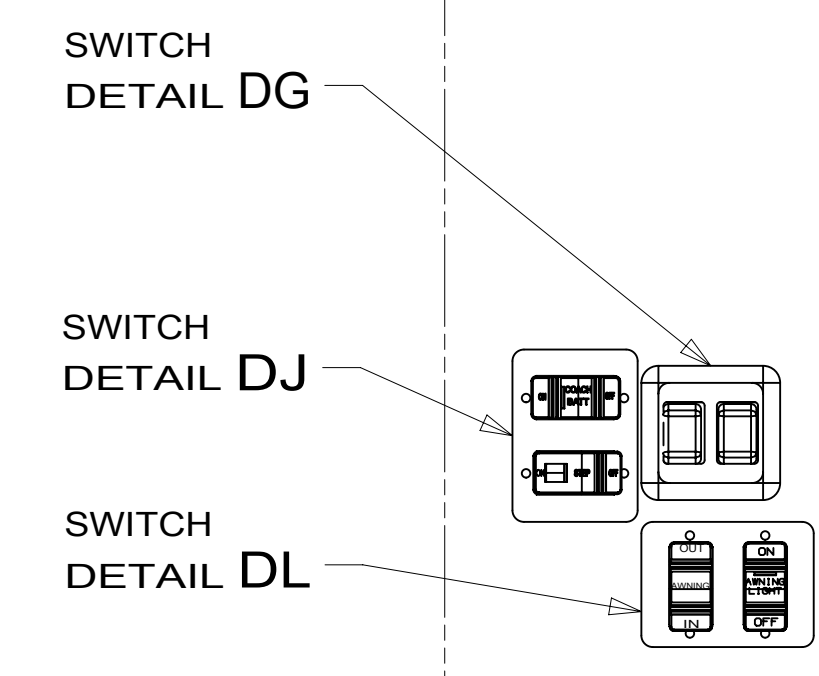
PLUG CONVERTER  
POWER CORD INTO  
CONVENIENCE RECEPTACLE

DETAIL EA



DETAIL EE 1MR 5

- NOTES:
- 5 SEE WIRING INSTL-TV/DVD FOR ADDITIONAL INFORMATION.
  - 4 MOUNT MAGNET USING PILOT HOLES IN SCREEN DOOR FRAME. MOUNT WITH MAGNET TOWARD SWITCH.
  - 3 MOUNT SWITCH AND SPACER TO BLOCK ON JAMB. ADJUST HEIGHT TO MATCH MAGNET.
  - 2 CIRCUIT FROM WIRE ASM-COACH.
  - 1 CIRCUIT FROM WIRE ASM-CHASSIS.



DETAIL EC

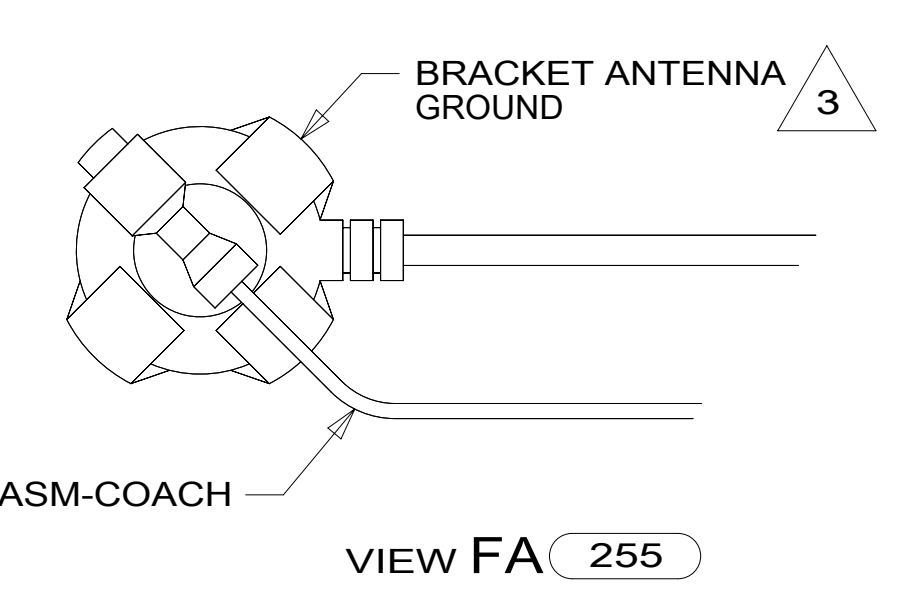
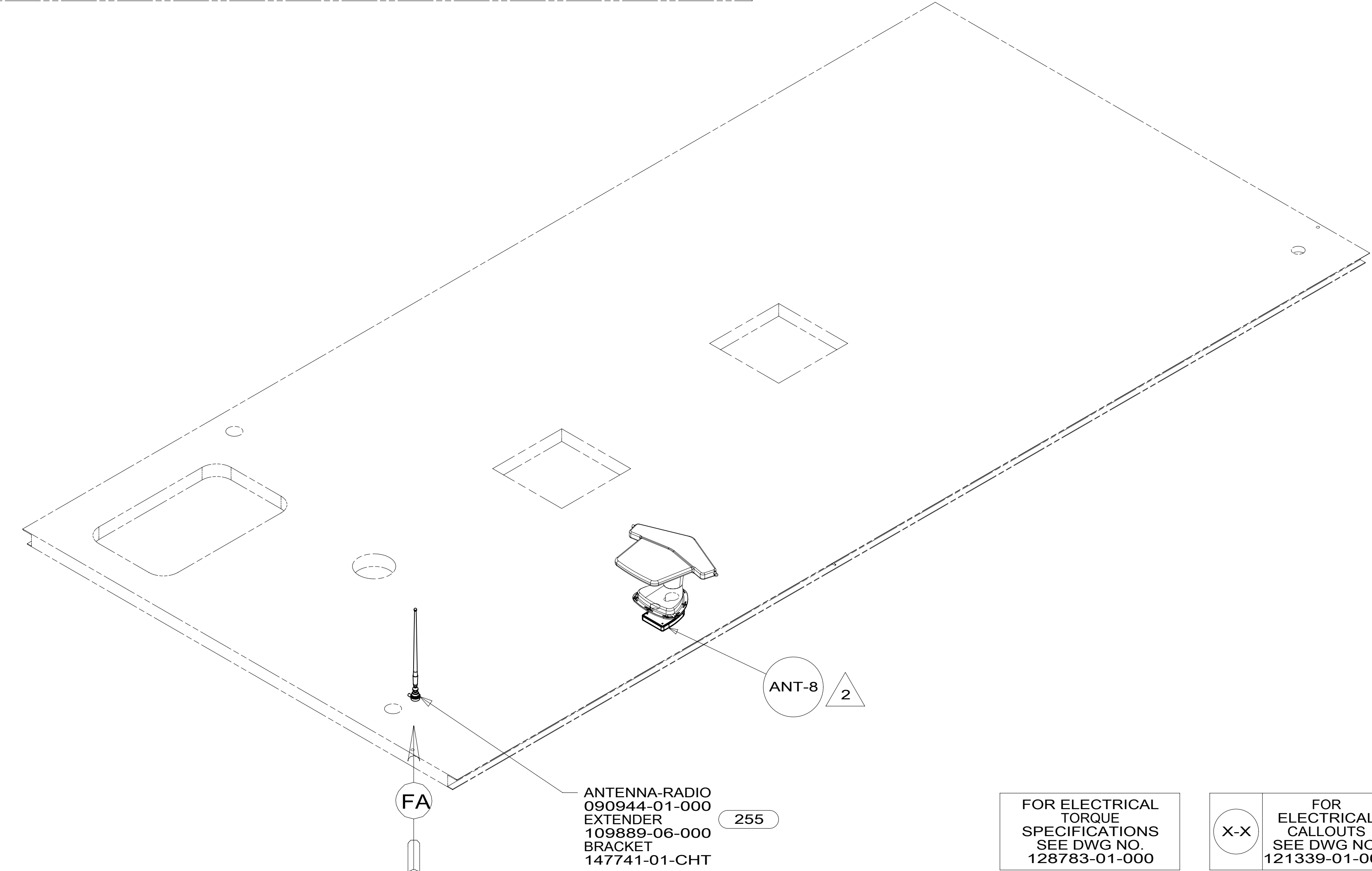
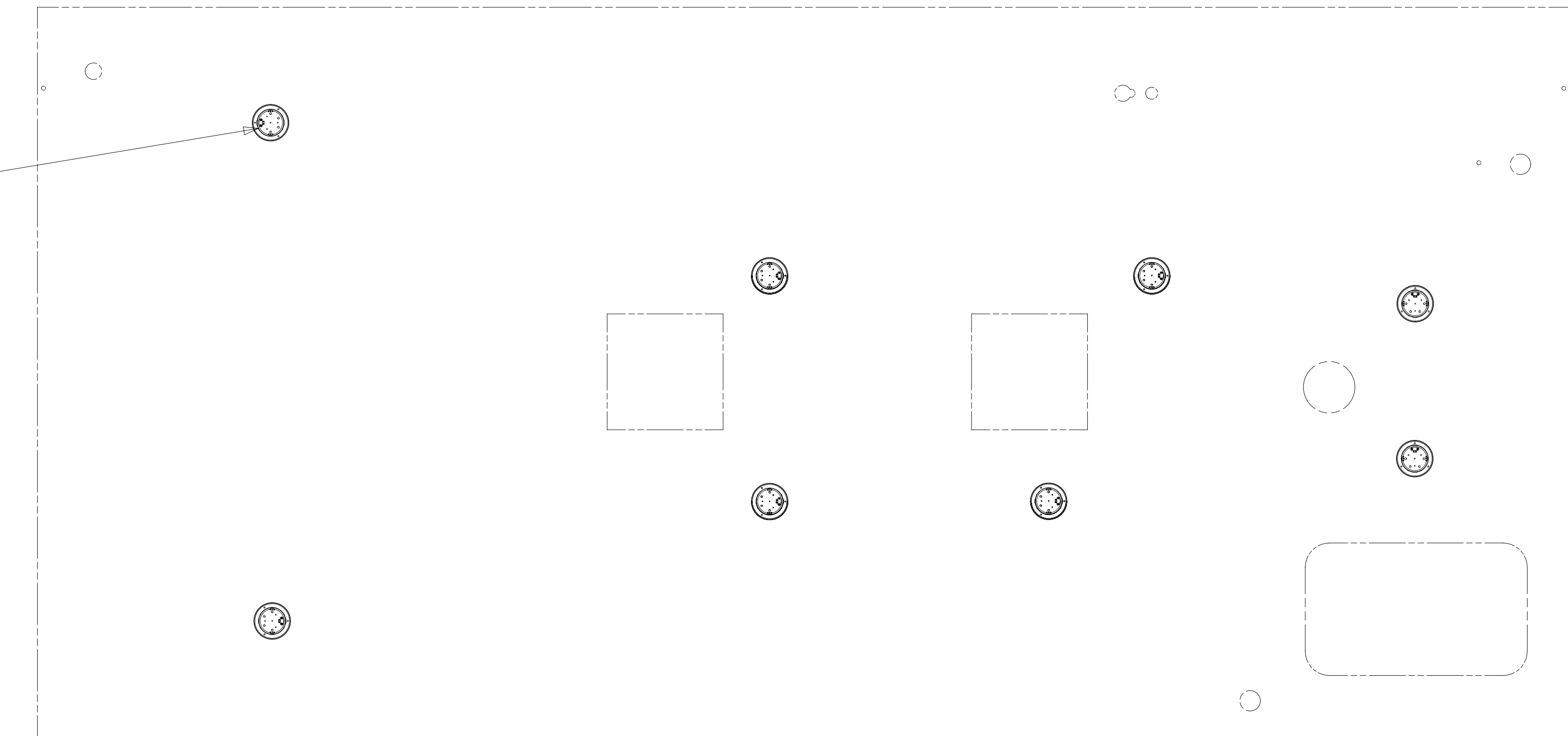
FOR ELECTRICAL  
TORQUE  
SPECIFICATIONS  
SEE DWG NO.  
128783-01-000

X-X  
FOR  
ELECTRICAL  
CALLOUTS  
SEE DWG NO.  
121339-01-000

- 1MR TV(FRT)-19" DC LCD STEREO
- 45B LOFT BED
- 1E2 ENTRANCE STEP-ELEC.
- 265 CODES/STANDARDS-CSA/CMVSS
- 1B1 CODES/STANDARDS USA

FIRST USED		15 623B	
DO NOT SCALE DRAWING			
TITLE: WIRING INSTL-BODY, 12V			
SHEET 5	PART NO	191124	REV
		1	20-May-2015

\*191124\*



- NOTES:
- 3 WRAP BRACKET LEGS AROUND ANTENNA BASE.
  - 2 SEE ANTENNA INSTALLATION MANUAL FOR CORRECT INSTALLATION PROCEDURE.
  - 1. SEE ROOF ASM FOR ADDITIONAL INFORMATION.

- 255 RADIO/AM/FM/CD/DVD, COACH
- 265 CODES/STANDARDS-CSA/CMVSS
- 1B1 CODES/STANDARDS USA

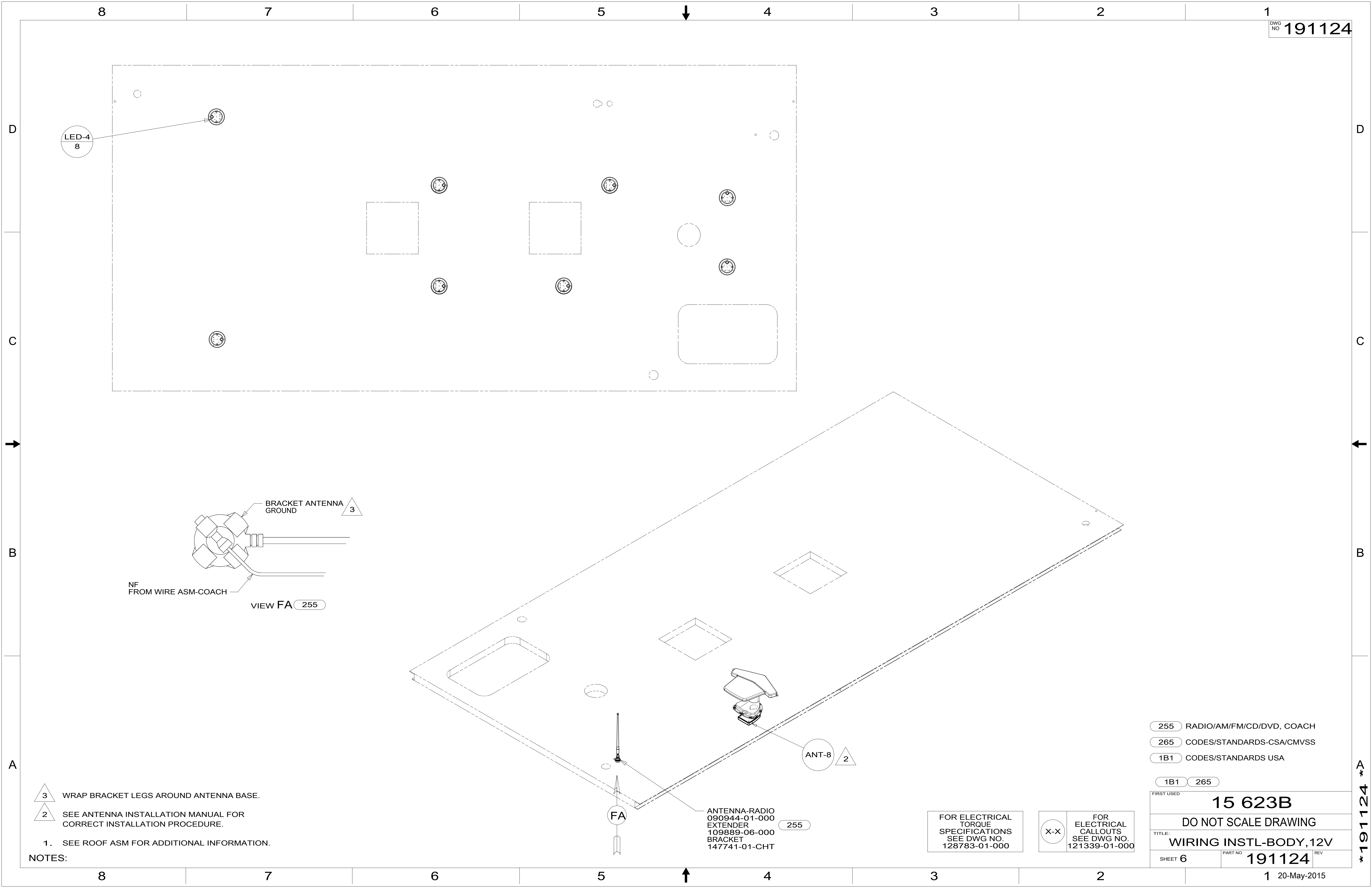
FIRST USED	<b>15 623B</b>	
<b>DO NOT SCALE DRAWING</b>		
<b>TITLE: WIRING INSTL-BODY, 12V</b>		
SHEET 6	PART NO <b>191124</b>	REV

FOR ELECTRICAL TORQUE SPECIFICATIONS SEE DWG NO. 128783-01-000

FOR ELECTRICAL CALLOUTS SEE DWG NO. 121339-01-000

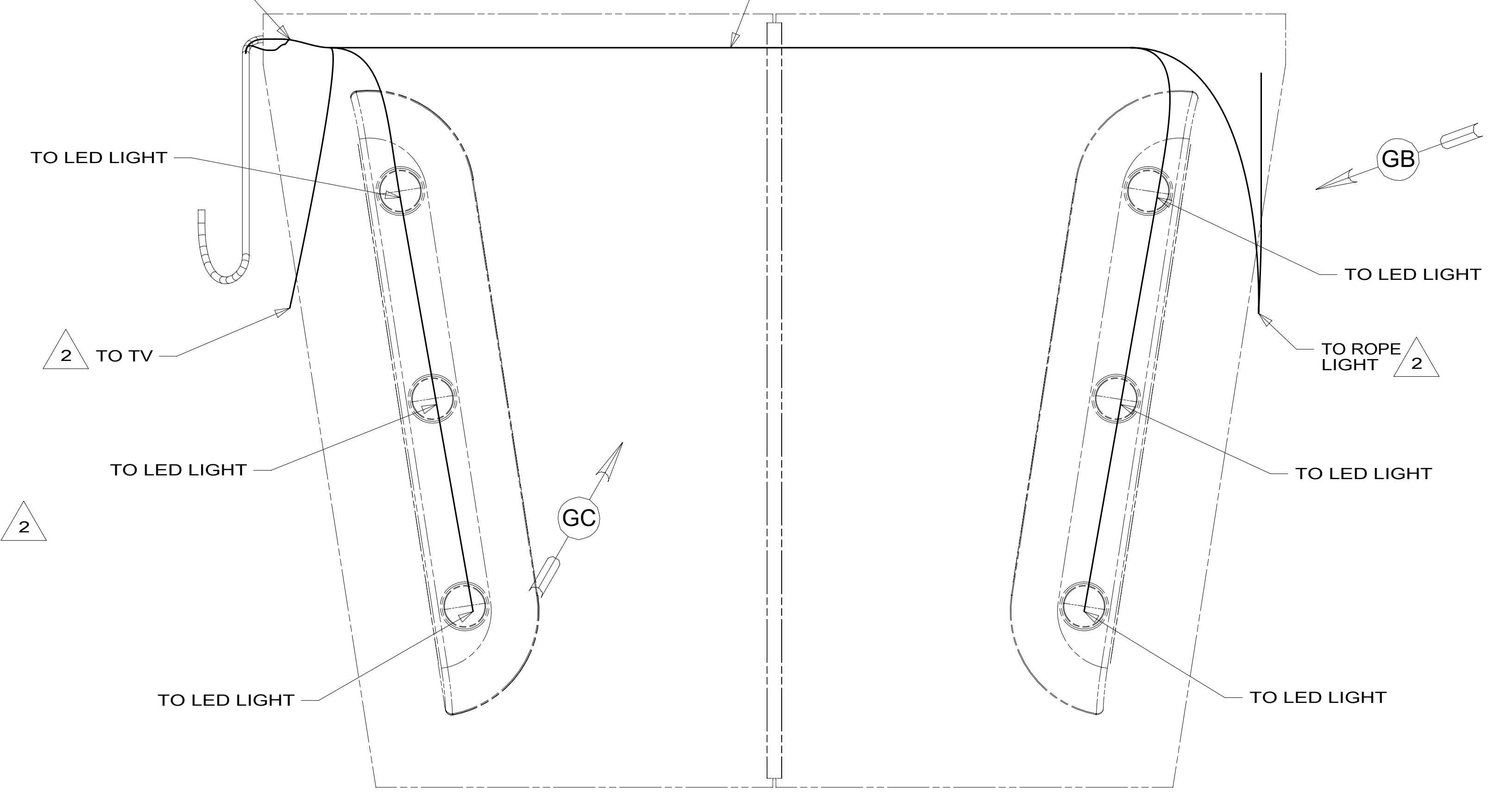
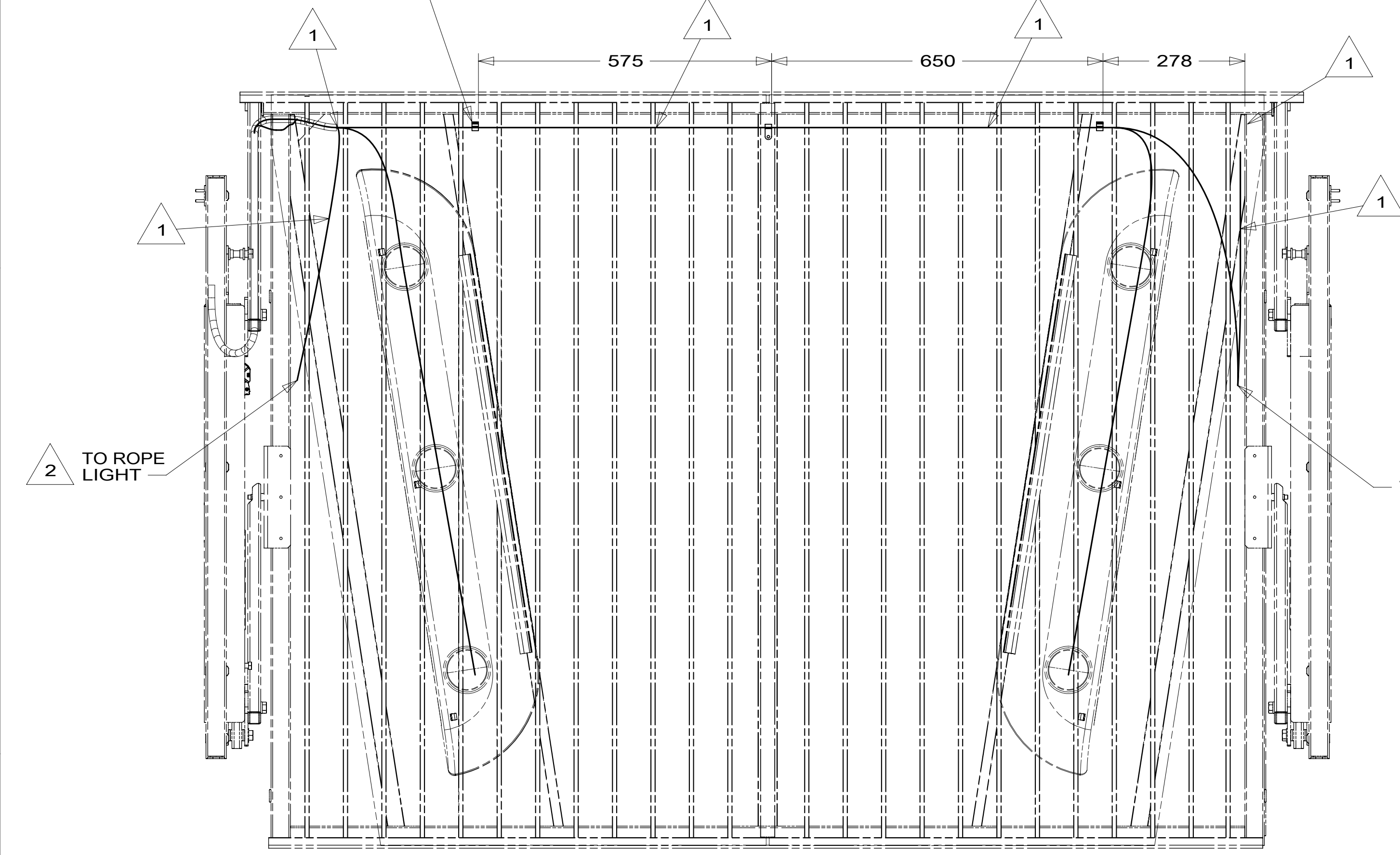
ANTENNA-RADIO  
090944-01-000  
EXTENDER  
109889-06-000  
BRACKET  
147741-01-CHT

\*191124 \*A



CLAMP  
10495-01-000 (3)  
SCREW  
G39-10-12U (3)

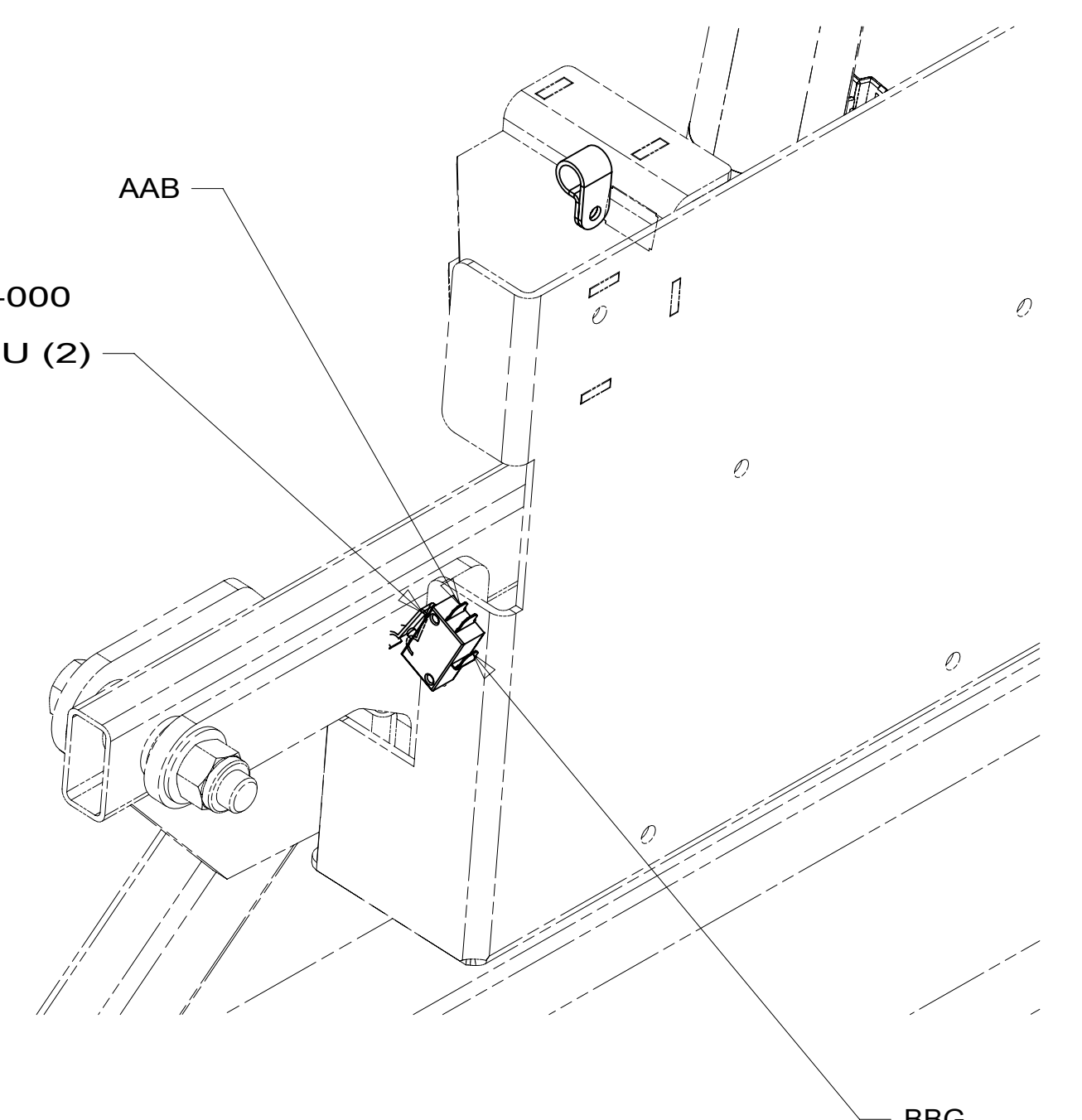
TO WIRE ASM-SIDEWALL  
WIRE ASM-BUNK  
184647-01-000 45B



VIEW GA 45B

VIEW GC 45B

SWITCH  
056264-01-000  
SCREW  
G11-06-16U (2)



VIEW GB 45B

- NOTES:
- 2 ROUTE WIRES THROUGH BOTTOM OF BUNK INTO OVHD CABT.
  - 1 ROUTE WIRES ABOVE TUBES/SUPPORTS TO ENSURE WIRES ARE NOT PINCHED.

- 45B LOFT BED
- 265 CODES/STANDARDS-CSA/CMVSS
- 1B1 CODES/STANDARDS USA

FIRST USED	15 623B
DO NOT SCALE DRAWING	
TITLE: WIRING INSTL-BODY, 12V	
SHEET 7	PART NO 191124 REV
1 20-May-2015	

FOR ELECTRICAL TORQUE SPECIFICATIONS SEE DWG NO. 128783-01-000

FOR ELECTRICAL CALLOUTS SEE DWG NO. 121339-01-000

\*191124 \*A