



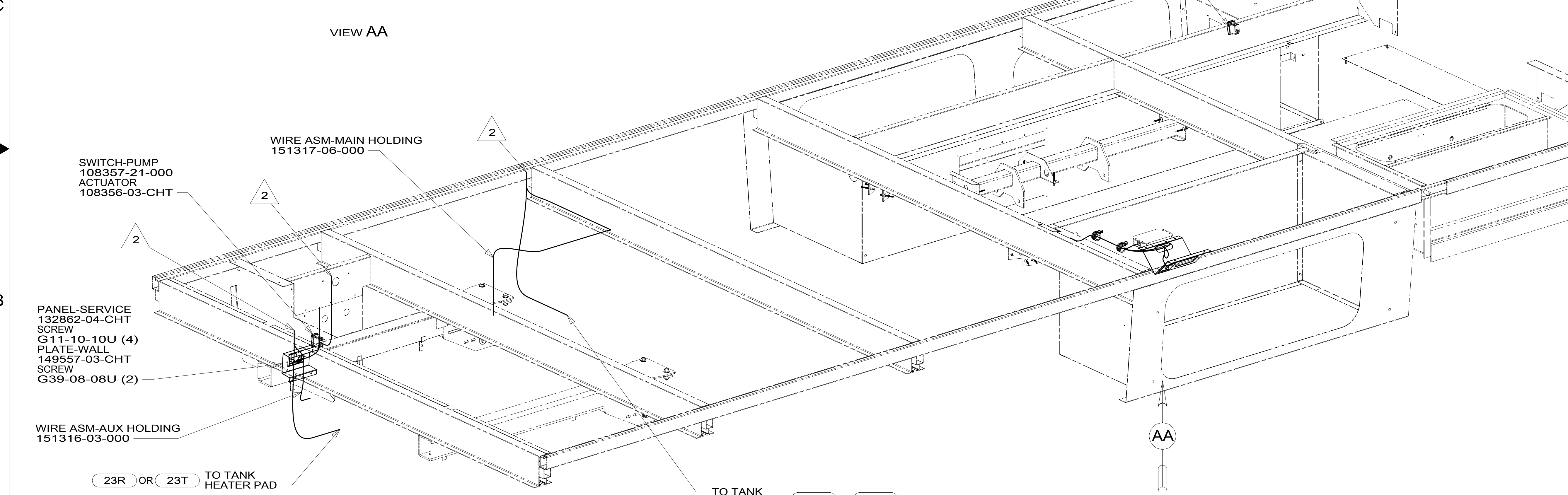
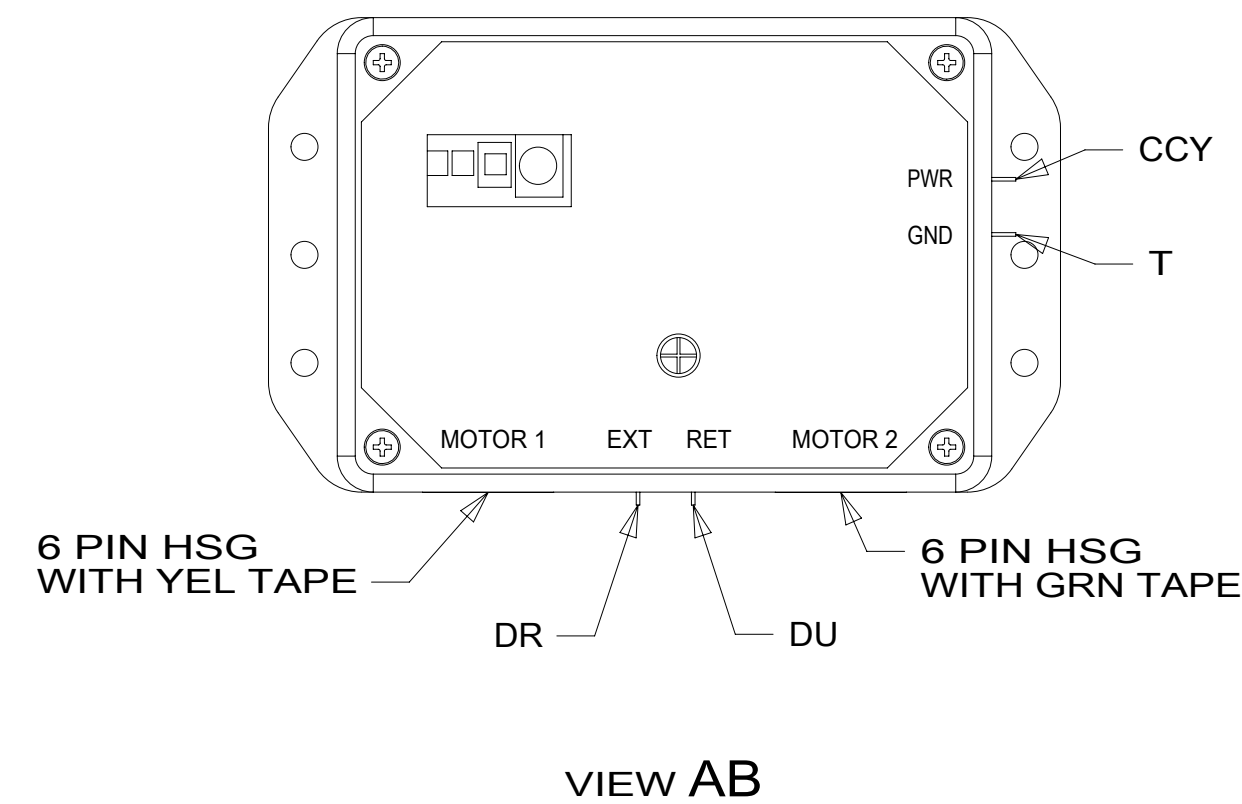
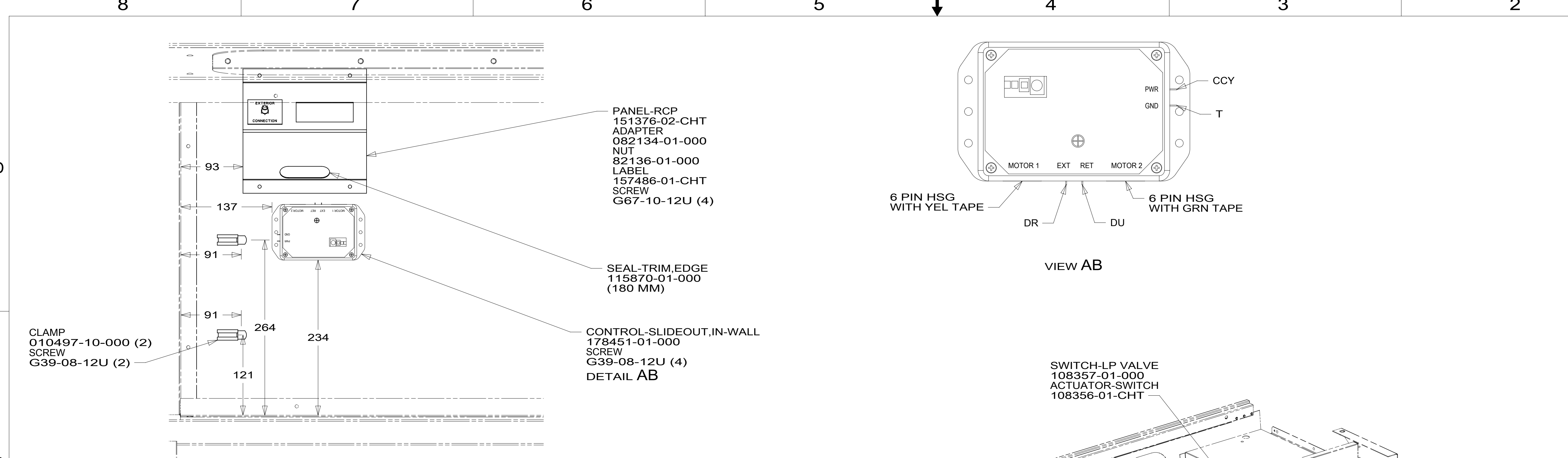
DANGER

Danger of electrical shock, burns or death. Always remove all power sources before attempting any repair, service or diagnostic work. Power can be present from shore power, generator, inverter or battery. All power sources must be disabled and secured before performing any service.



CAUTION

If you lack the skills, tools or equipment to perform diagnostic or repair work leave such work to an authorized Winnebago Industries dealer or other qualified shop.



- 23R DRAINAGE SYSTEM/HEAT-PREWIRE
- 23T DRAINAGE SYSTEM-HEATED
- 265 CODES/STANDARDS-CSA/CMVSS
- 1B1 CODES/STANDARDS USA

WINNEBAGO COPYRIGHT 2014 WINNEBAGO INDUSTRIES, INC.

15 H25P

ALL DIMENSIONS ARE IN MILLIMETERS

UNSPECIFIED TOLERANCES ARE:
 WHOLE DIM (X) : 3
 ONE-PLACE (X.X) : 1.5
 TWO-PLACE (X.XX) : 0.50
 ANGLE : 1°

THIRD ANGLE PROJECTION

DO NOT SCALE DRAWING REFER TO ES0018 FOR FASTENER TIGHTENING GUIDELINES

TITLE: **WIRING INSTL-BODY, 12V**

SHEET 1 OF 6 PART NO 190919 REV

REF: 1 17-Jul-2015

NOTES:

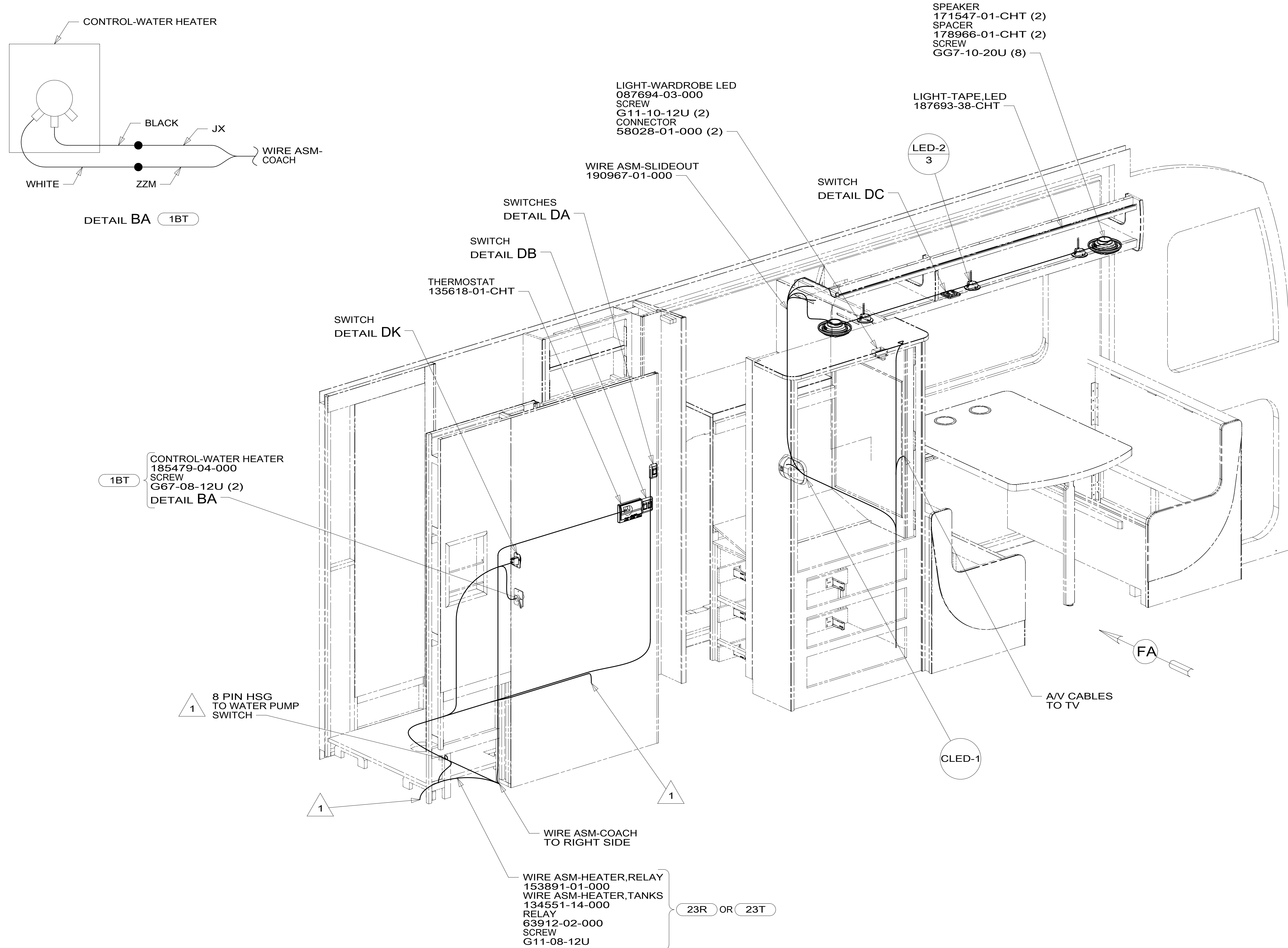
2 WIRE ROUTED THROUGH FLOOR IN THIS AREA.

1. ROUTE TANK SENSOR WIRES SO THEY DO NOT PASS OVER SENSORS. USE WIRE TIE MOUNT 155366-01-000 AS NEEDED. TANK SURFACE MUST BE CLEANED USING ISOPROPYL ALCOHOL AND PRIME WITH PRIMER 94.

FOR ELECTRICAL TORQUE SPECIFICATIONS SEE DWG NO. 128783-01-000

FOR ELECTRICAL CALLOUTS SEE DWG NO. 121339-01-000

* 190919 A *



1BT CONTROL-WATER HEATER
185479-04-000
SCREW
G67-08-12U (2)
DETAIL BA

WIRE ASM-HEATER, RELAY
153891-01-000
WIRE ASM-HEATER, TANKS
134551-14-000
RELAY
63912-02-000
SCREW
G11-08-12U

23R OR 23T

SPEAKER
171547-01-CHT (2)
SPACER
178966-01-CHT (2)
SCREW
GG7-10-20U (8)

LIGHT-TAPE, LED
187693-38-CHT

LIGHT-WARDBOBE LED
087694-03-000
SCREW
G11-10-12U (2)
CONNECTOR
58028-01-000 (2)

WIRE ASM-SLIDEOUT
190967-01-000

SWITCH
DETAIL DC

SWITCHES
DETAIL DA

SWITCH
DETAIL DB

THERMOSTAT
135618-01-CHT

SWITCH
DETAIL DK

A/V CABLES
TO TV

1 8 PIN HSG
TO WATER PUMP
SWITCH

WIRE ASM-COACH
TO RIGHT SIDE

1 WIRE ROUTED THROUGH FLOOR IN THIS AREA.

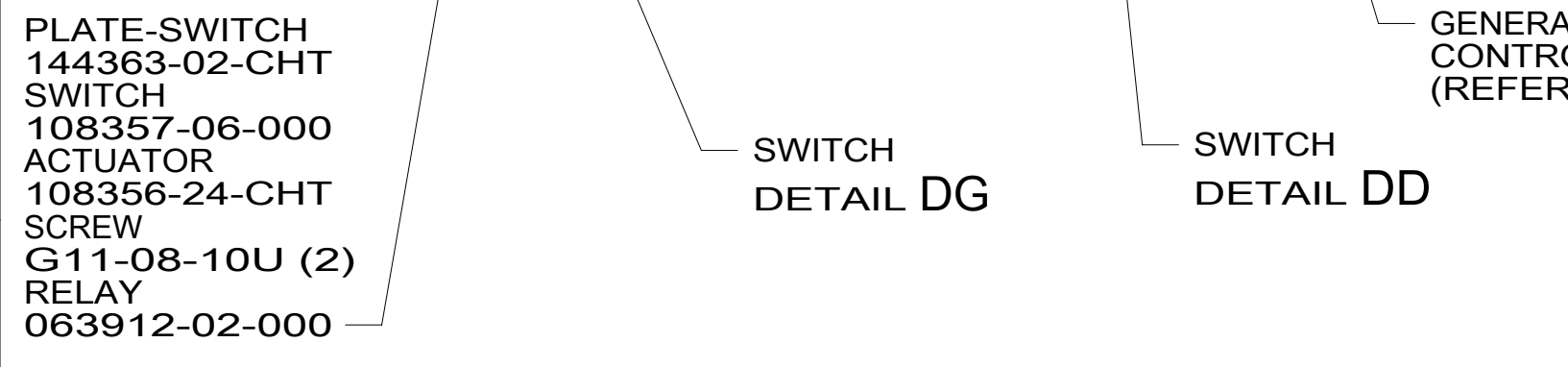
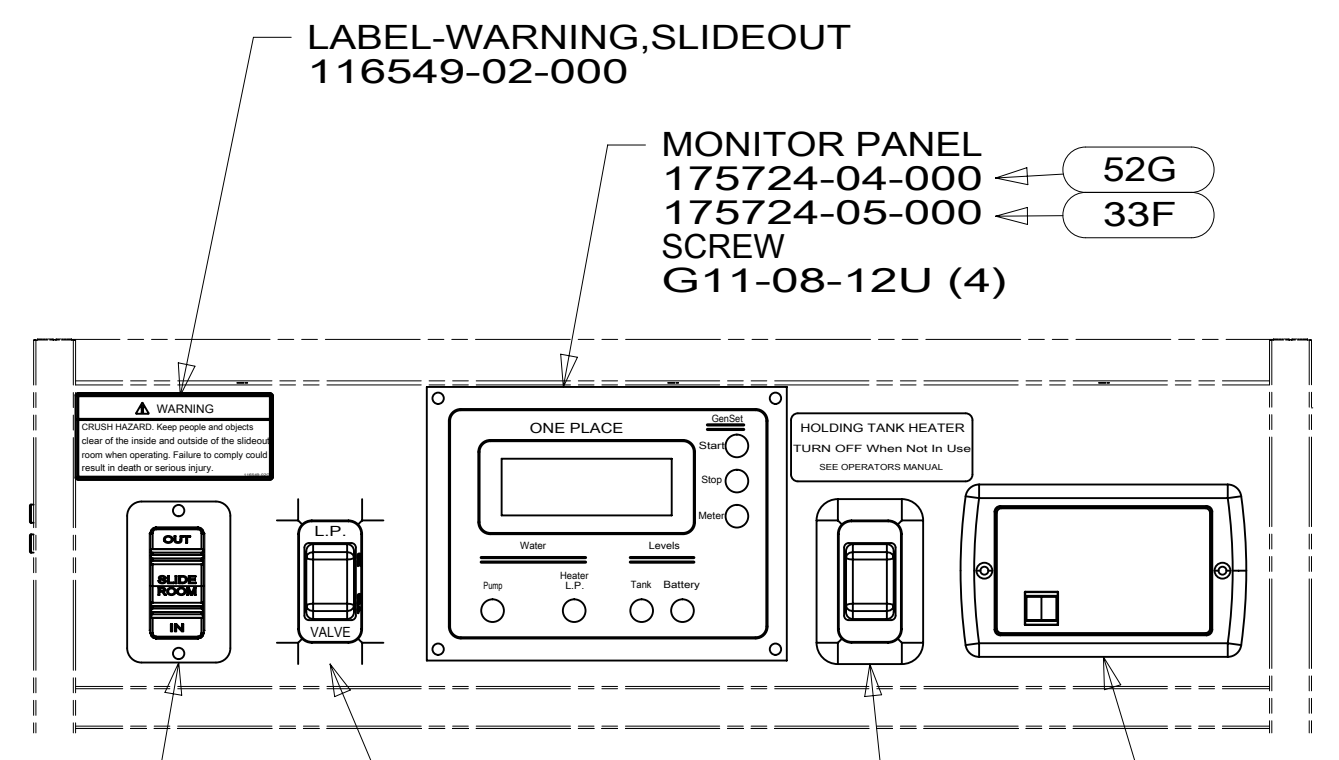
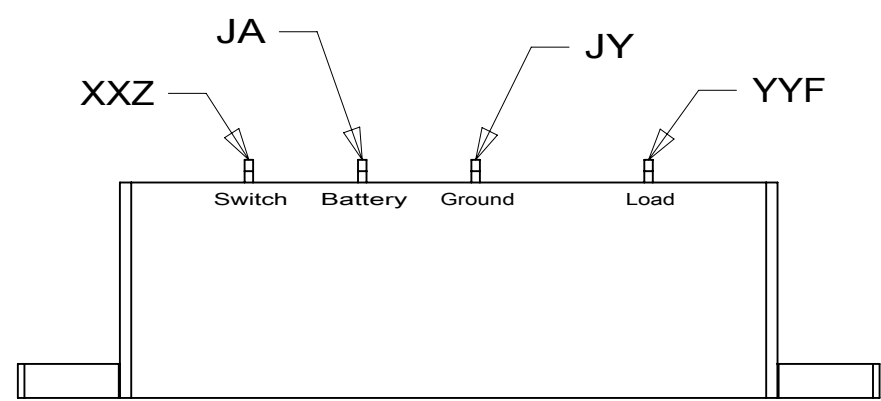
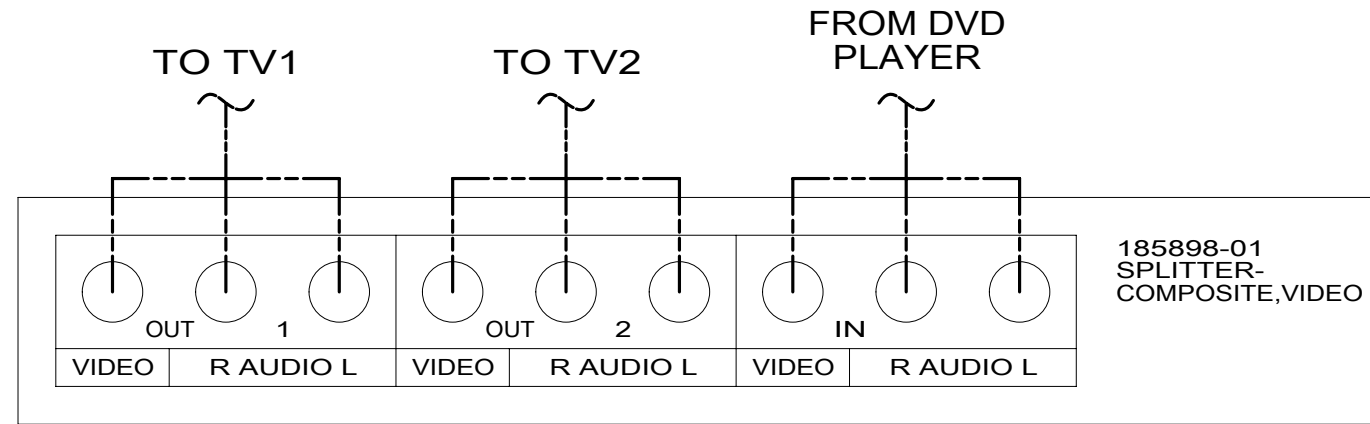
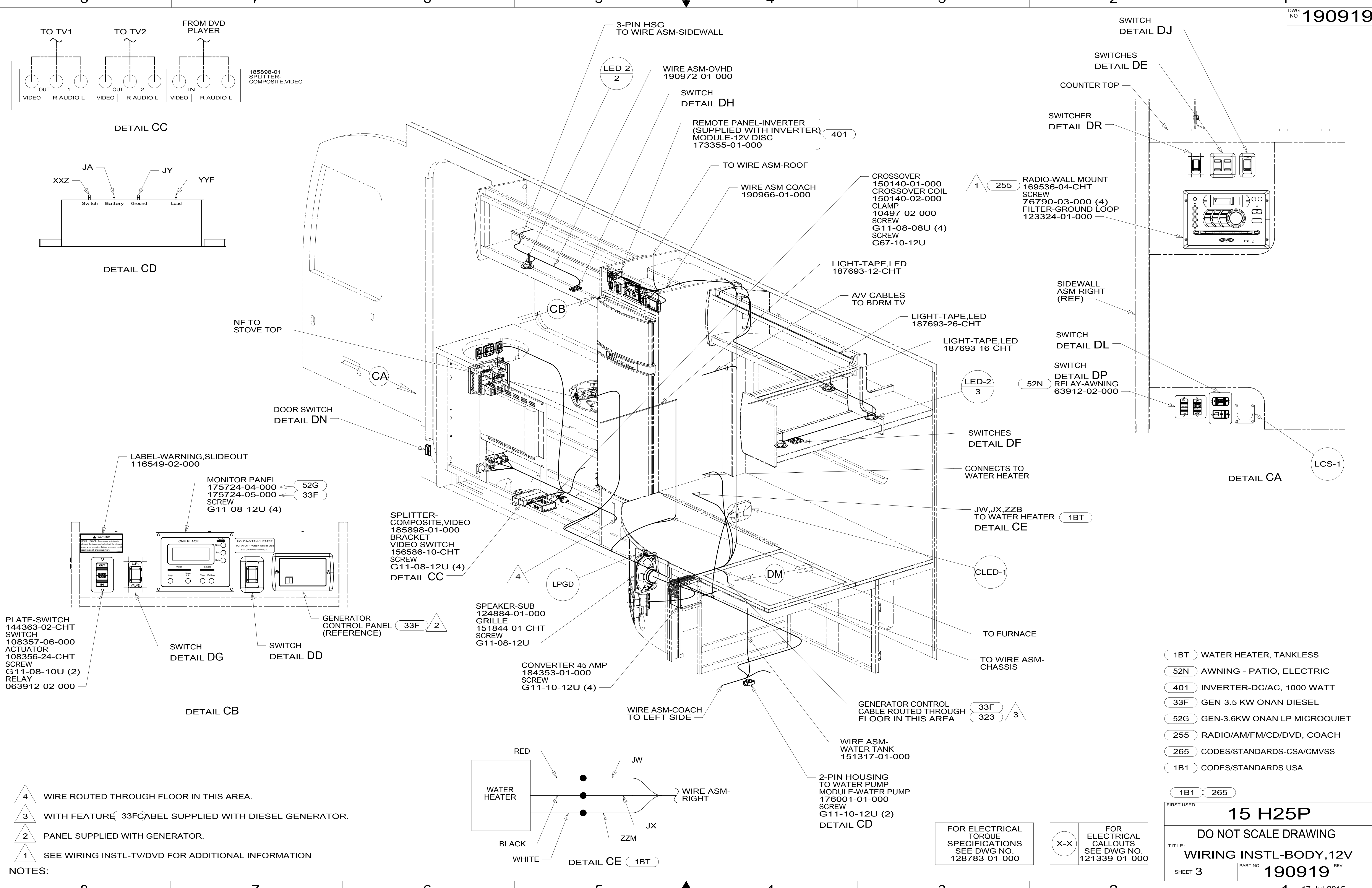
- 1BT WATER HEATER, TANKLESS
- 23T DRAINAGE SYSTEM-HEATED
- 23R DRAINAGE SYSTEM/HEAT-PREWIRE
- 265 CODES/STANDARDS-CSA/CMVSS
- 1B1 CODES/STANDARDS USA

1B1	265
FIRST USED	
15 H25P	
DO NOT SCALE DRAWING	
TITLE: WIRING INSTL-BODY, 12V	
SHEET 2	PART NO 190919 REV
1 17-Jul-2015	

FOR ELECTRICAL
TORQUE
SPECIFICATIONS
SEE DWG NO.
128783-01-000

X-X
FOR
ELECTRICAL
CALLOUTS
SEE DWG NO.
121339-01-000

A * 190919



NOTES:

- 4 WIRE ROUTED THROUGH FLOOR IN THIS AREA.
- 3 WITH FEATURE 33FC LABEL SUPPLIED WITH DIESEL GENERATOR.
- 2 PANEL SUPPLIED WITH GENERATOR.
- 1 SEE WIRING INSTL-TV/DVD FOR ADDITIONAL INFORMATION

- 1BT WATER HEATER, TANKLESS
- 52N AWNING - PATIO, ELECTRIC
- 401 INVERTER-DC/AC, 1000 WATT
- 33F GEN-3.5 KW ONAN DIESEL
- 52G GEN-3.6KW ONAN LP MICROQUIET
- 255 RADIO/AM/FM/CD/DVD, COACH
- 265 CODES/STANDARDS-CSA/CMVSS
- 1B1 CODES/STANDARDS USA

FOR ELECTRICAL TORQUE SPECIFICATIONS SEE DWG NO. 128783-01-000

FOR ELECTRICAL CALLOUTS SEE DWG NO. 121339-01-000

FIRST USED

15 H25P

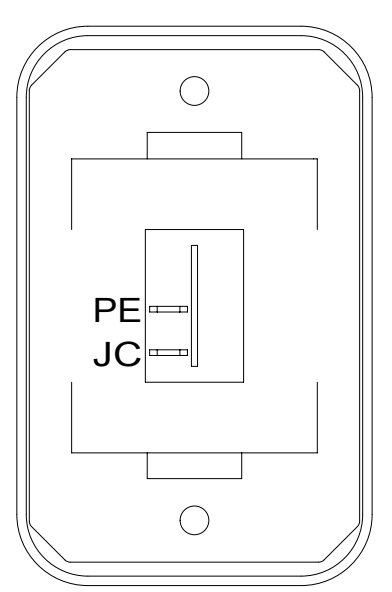
DO NOT SCALE DRAWING

TITLE: **WIRING INSTL-BODY, 12V**

SHEET 3 PART NO **190919** REV

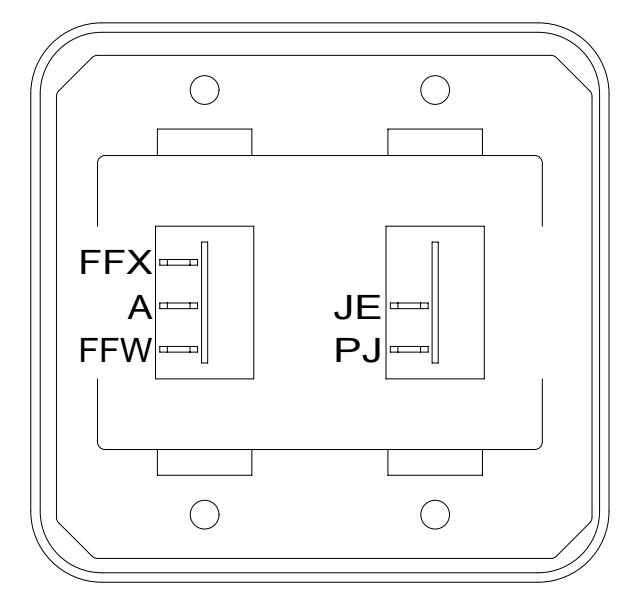
17-Jul-2015

* 190919 A *



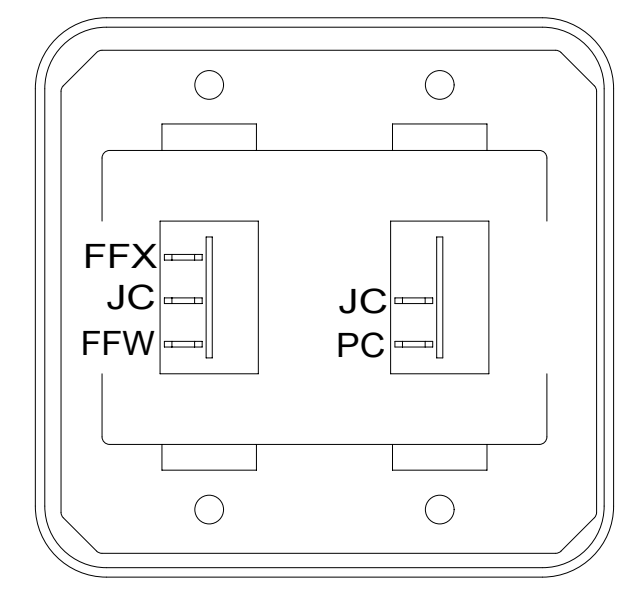
SWITCH-ROCKER
135740-01-CHT
SWITCH-BASE
135741-01-CHT
SWITCH-BEZEL
135742-01-CHT
SCREW
G11-08-08U (2)

DETAIL DA



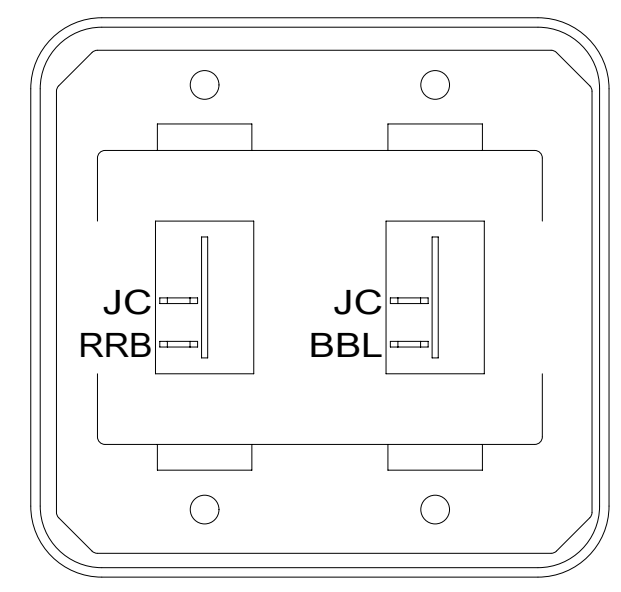
SWITCH-ROCKER
135740-01-CHT
135740-02-CHT
SWITCH-BASE
135741-02-CHT
SWITCH-BEZEL
135742-02-CHT
SCREW
G11-08-08U (4)

DETAIL DE



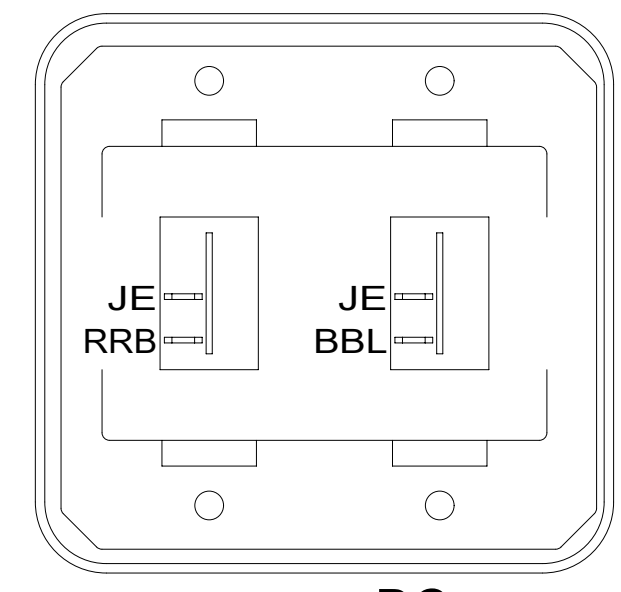
SWITCH-ROCKER
135740-01-CHT
135740-02-CHT
SWITCH-BASE
135741-02-CHT
SWITCH-BEZEL
135742-02-CHT
SCREW
G11-08-08U (4)

DETAIL DB



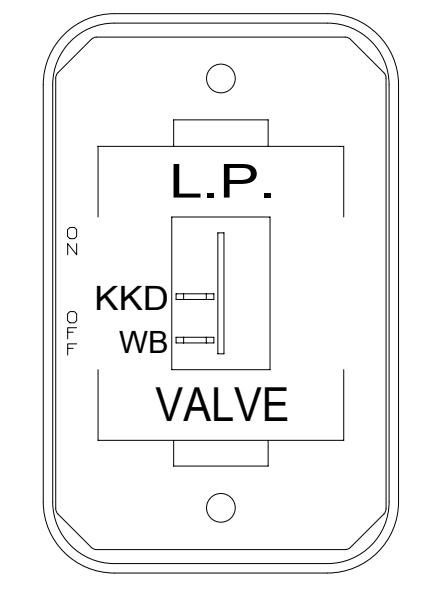
SWITCH-ROCKER
135740-01-CHT (2)
SWITCH-BASE
135741-02-CHT
SWITCH-BEZEL
135742-02-CHT
SCREW
G11-08-08U (4)

DETAIL DF



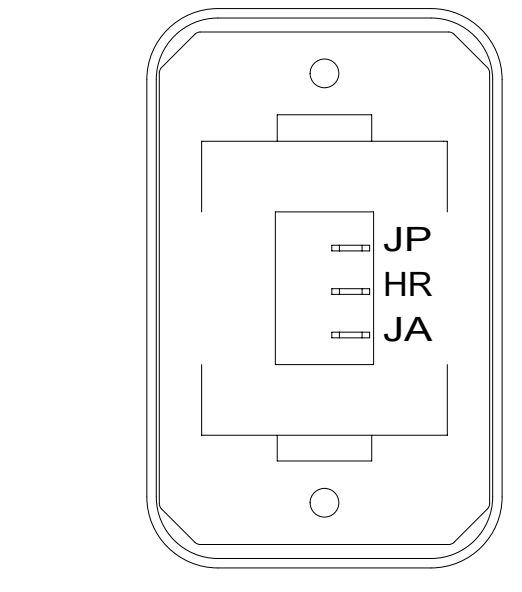
SWITCH-ROCKER
135740-01-CHT (2)
SWITCH-BASE
135741-02-CHT
SWITCH-BEZEL
135742-02-CHT
SCREW
G11-08-08U (4)

DETAIL DC
(2 PLACES)



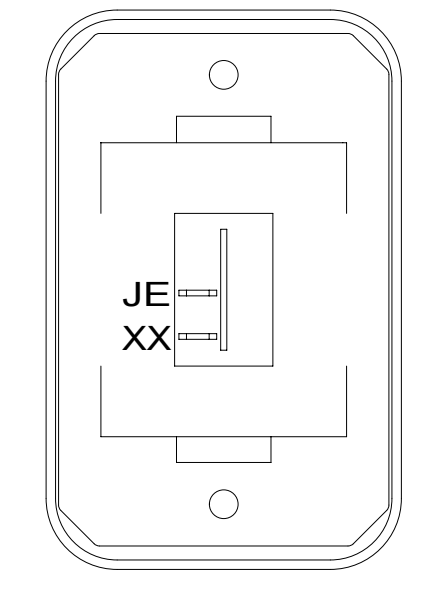
SWITCH-ROCKER
135740-01-CHT
SWITCH-BASE
135741-01-CHT
SWITCH-BEZEL
135742-59-CHT
SCREW
G11-08-08U (2)

DETAIL DG



SWITCH-BLANK
138253-01-CHT
SWITCH-ROCKER
135740-06-CHT
SWITCH-BASE
135741-01-CHT
SWITCH-BEZEL
135742-01-CHT
SCREW
G11-08-08U (2)
LABEL-SWITCH
134563-01-CHT

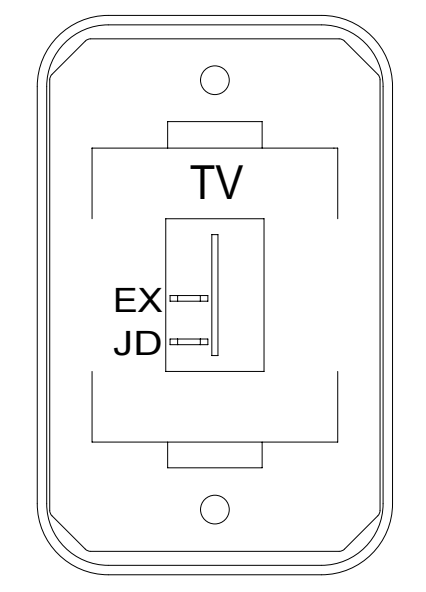
DETAIL DD



SWITCH-ROCKER
135740-01-CHT
SWITCH-BASE
135741-01-CHT
SWITCH-BEZEL
135742-01-CHT
SCREW
G11-08-08U (2)

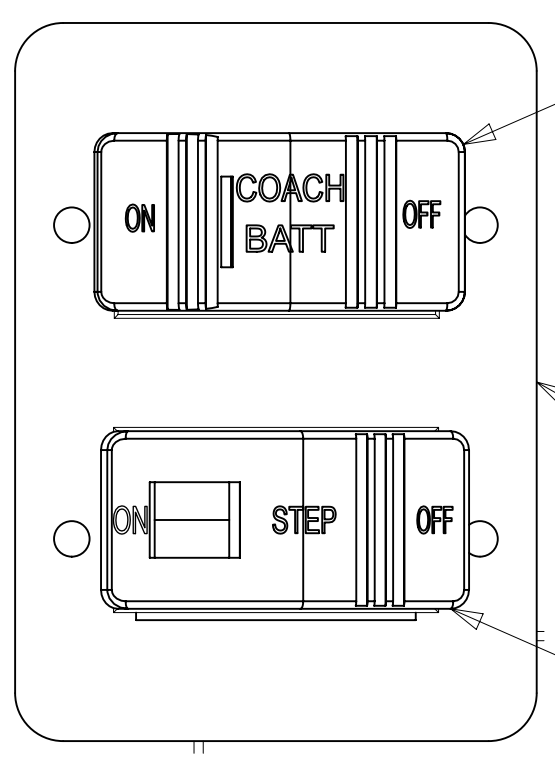
DETAIL DH

HOLDING TANK HEATER
TURN OFF When Not In Use
SEE OPERATORS MANUAL



SWITCH-ROCKER
135740-01-CHT
SWITCH-BASE
135741-01-CHT
SWITCH-BEZEL
135742-45-CHT
SCREW
G11-08-08U (2)

DETAIL DJ 1LK



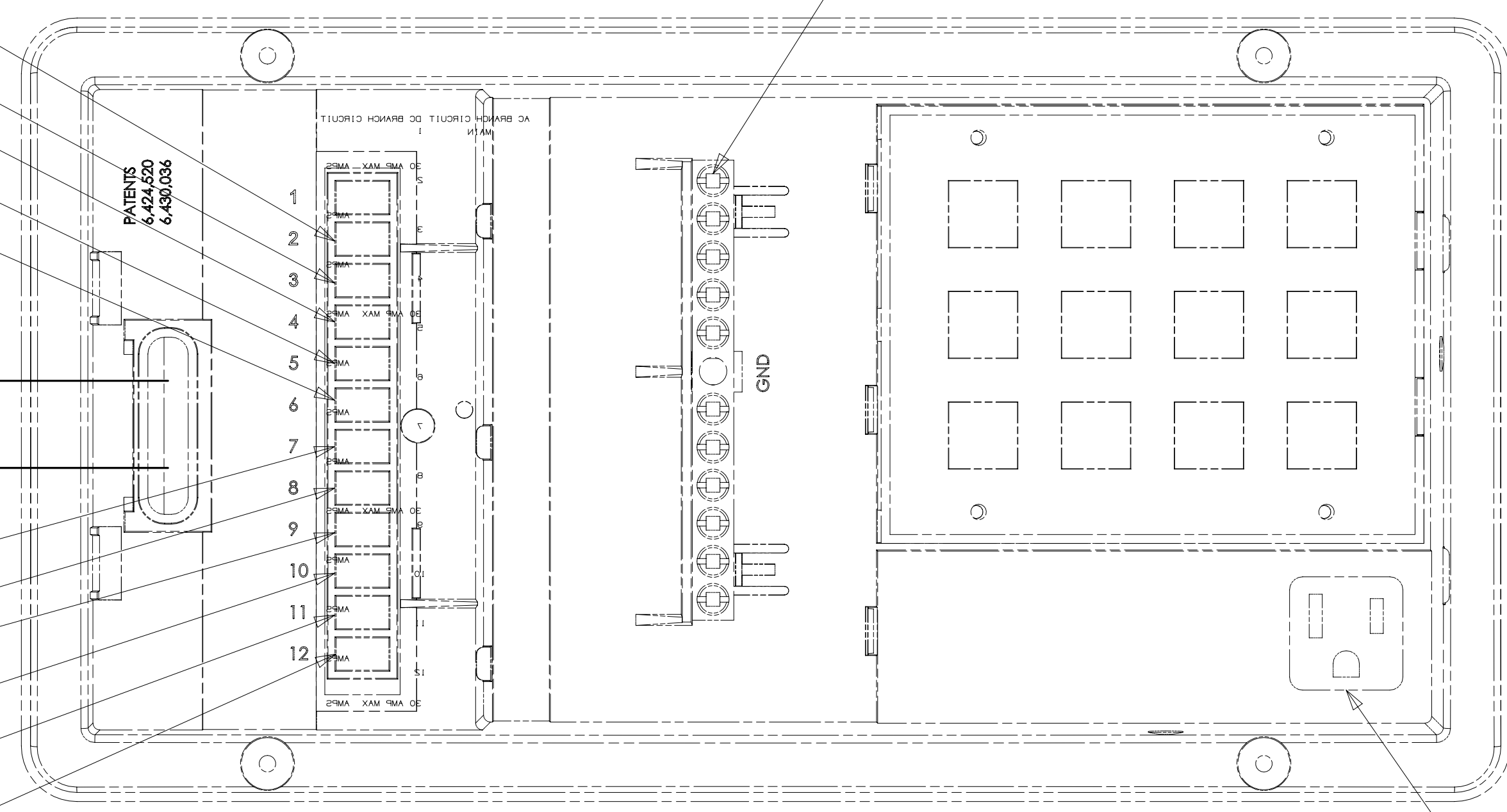
SWITCH-BATT DISC
108357-18-000
ACTUATOR-BATT DISC
108356-19-CHT
WIRE ASM-THERMISTOR
186796-01-000

PLATE-SWITCH
158431-17-CHT
SCREW
G11-06-10U (4)

SWITCH-STEP
108357-19-000

DETAIL DL

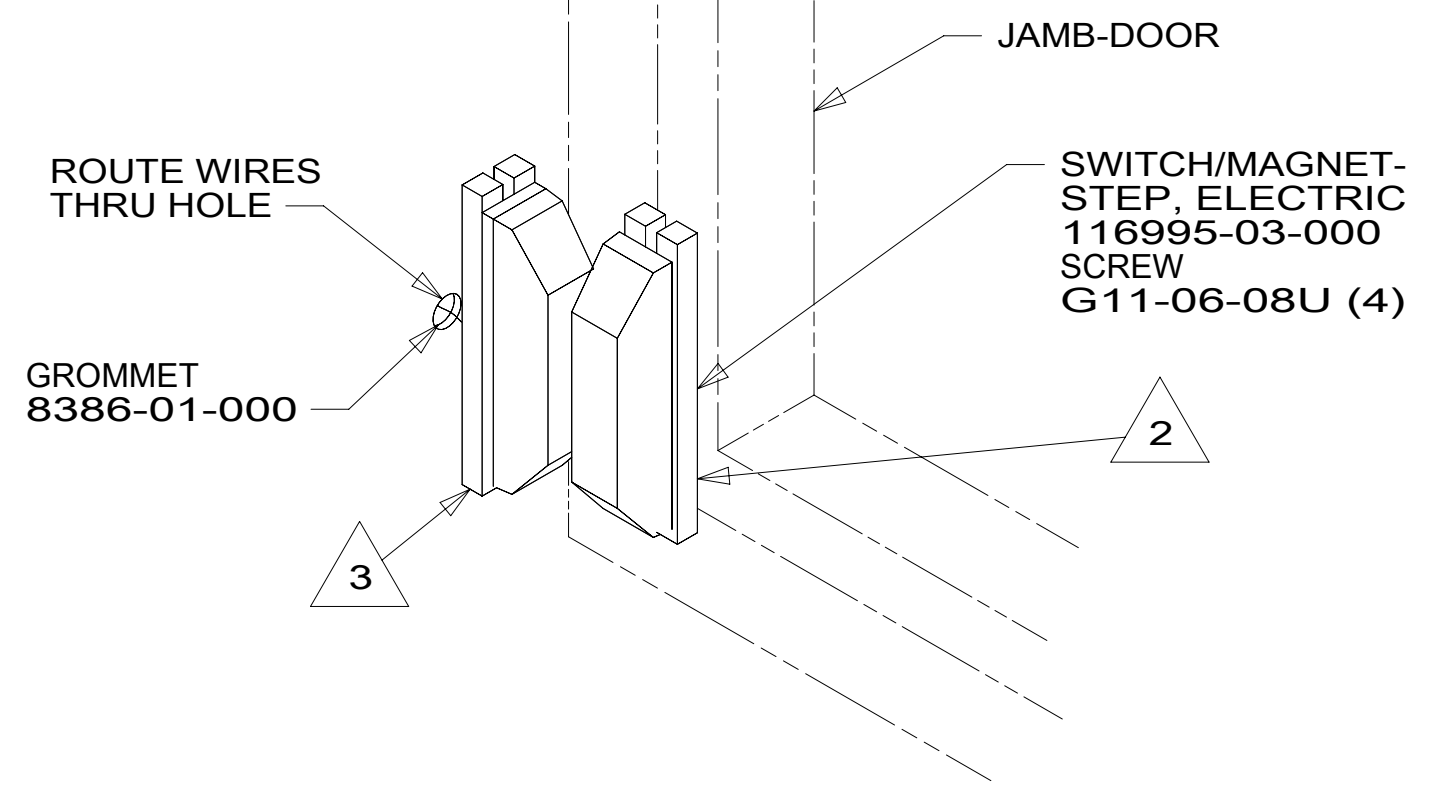
- JA (2)
- JB (3)
- JG (4)
- JC (5)
- JD (6)
- J (WIRE ASM-CHASSIS)
- M (WIRE ASM-COACH)
- JE (7)
- NM (8)
- JF (9)
- ET (10)
- WB (11)
- FFZ (12)



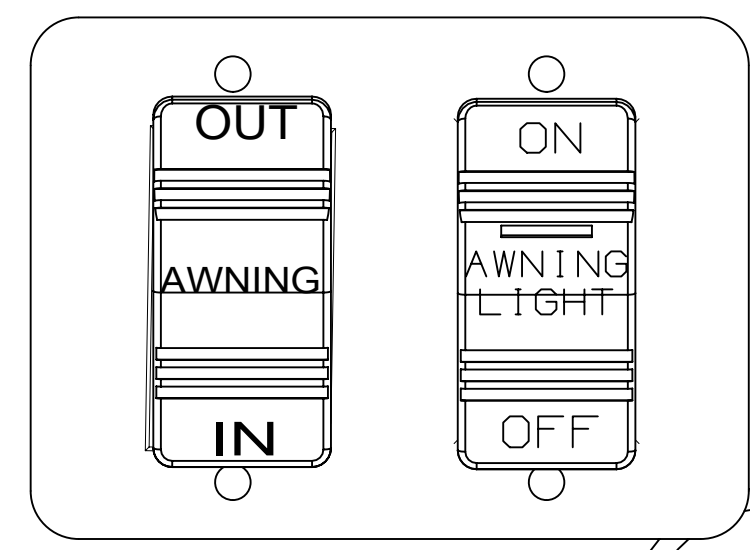
VIEW DM

GROUNDS
JX,EU,UK,FFE,JP,JM,
NF,PM,JY,NE,NC,ND

PLUG
CONVERTER
INTO OUTLET

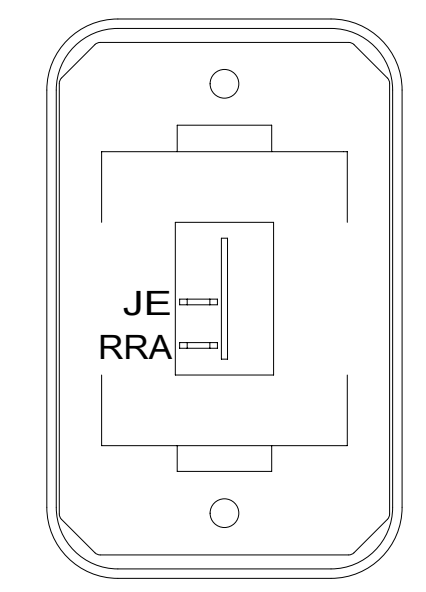


DETAIL DN



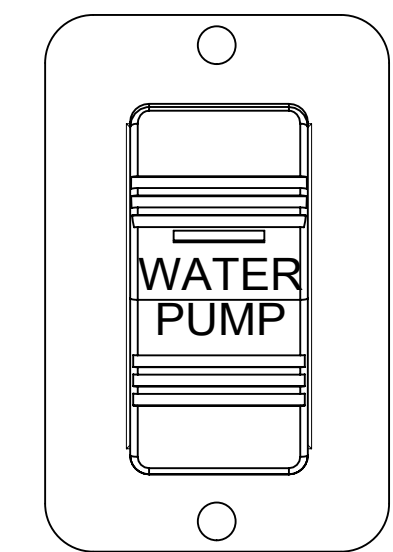
DETAIL DP 52N

SWITCH-AWNING
108357-06-000
ACTUATOR-AWNING
108356-12-CHT
SWITCH-AWNING LIGHT
108357-14-000
ACTUATOR
108356-28-CHT
PLATE
158431-17-CHT
SCREW
G11-06-10U (4)



DETAIL DR

SWITCH-ROCKER
135740-01-CHT
SWITCH-BASE
135741-01-CHT
SWITCH-BEZEL
135742-01-CHT
SCREW
G11-08-08U (2)



DETAIL DK

SWITCH-WATER PUMP
108357-21-000
ACTUATOR
108356-23-CHT
PLATE
144363-02-CHT
SCREW
G11-06-10U (2)

- 23R DRAINAGE SYSTEM/HEAT-PREWIRE
- 52N AWNING - PATIO, ELECTRIC
- 23T DRAINAGE SYSTEM-HEATED
- 1LK TV-20"DC,COLOR,LCD W/REMOTE
- 265 CODES/STANDARDS-CSA/CMVSS
- 1B1 CODES/STANDARDS USA

1B1 265

FIRST USED	
15 H25P	
DO NOT SCALE DRAWING	
WIRING INSTL-BODY, 12V	
SHEET 4	PART NO 190919 REV

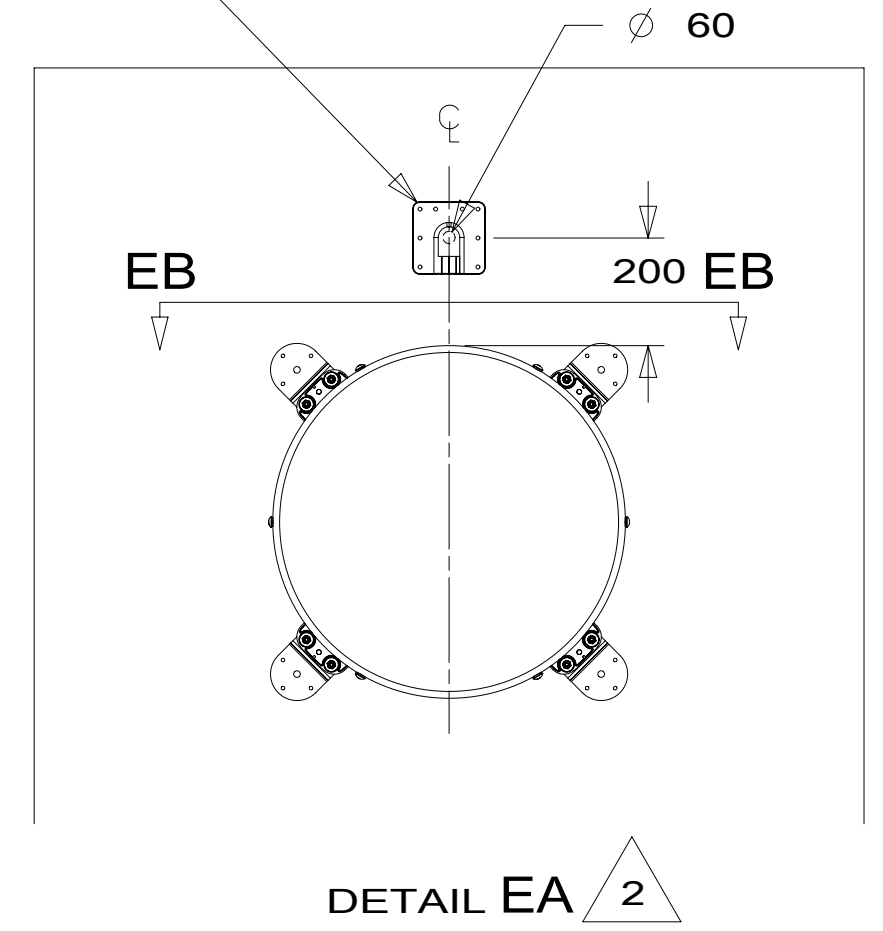
FOR ELECTRICAL
TORQUE
SPECIFICATIONS
SEE DWG NO.
128783-01-000

FOR
ELECTRICAL
CALLOUTS
SEE DWG NO.
121339-01-000

- NOTES:
- 3 MOUNT SWITCH AND SPACER TO BLOCK ON JAMB. ADJUST HEIGHT TO MATCH MAGNET.
 - 2 MOUNT MAGNET USING PILOT HOLES IN SCREEN DOOR FRAME. MOUNT WITH MAGNET TOWARD SWITCH.
 - 1 WITHOUT 23T OR 23R

* 190919 A *

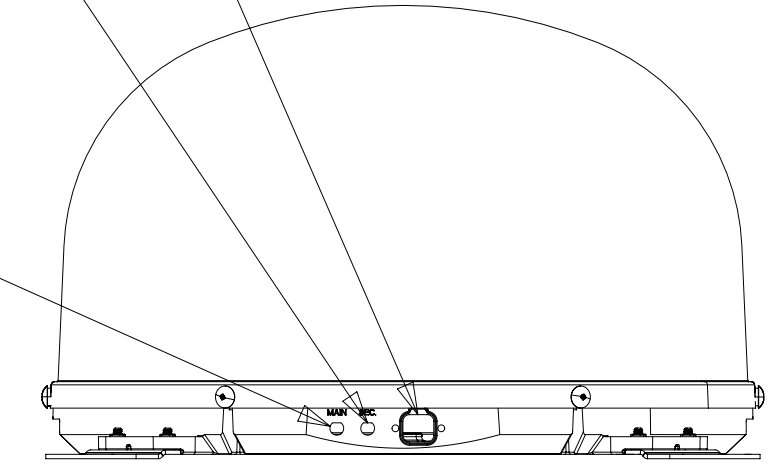
THE SATELLITE DISH WIRE CONNECTIONS ARE TO BE PLACED ON THE CENTERLINE OF THE MOTORHOME FACING FORWARD



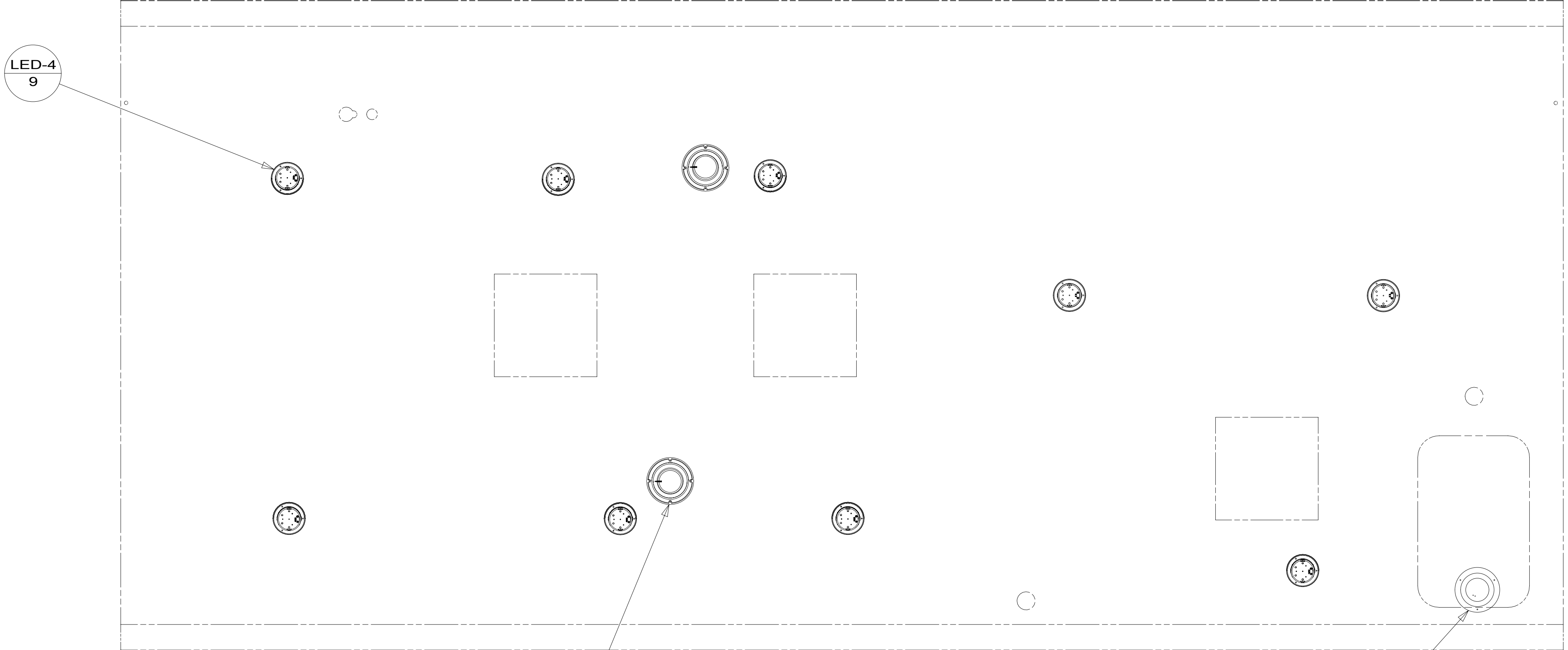
CONNECT 2-PIN HOUSING FROM ROOF ASM TO SATELLITE DISH HERE AND ADD CONVOLUTED TUBING

CONNECT CABLE ASM COAX (ORG-2) FROM ROOF ASM TO SEC INPUT ON SATELLITE DISH

CONNECT CABLE ASM COAX (ORG) FROM ROOF ASM TO MAIN INPUT ON SATELLITE DISH

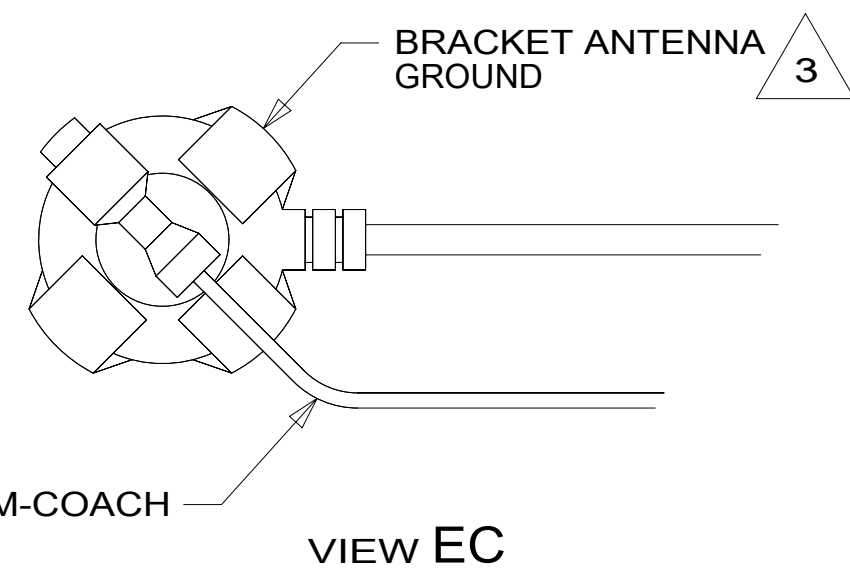


VIEW EB-EB



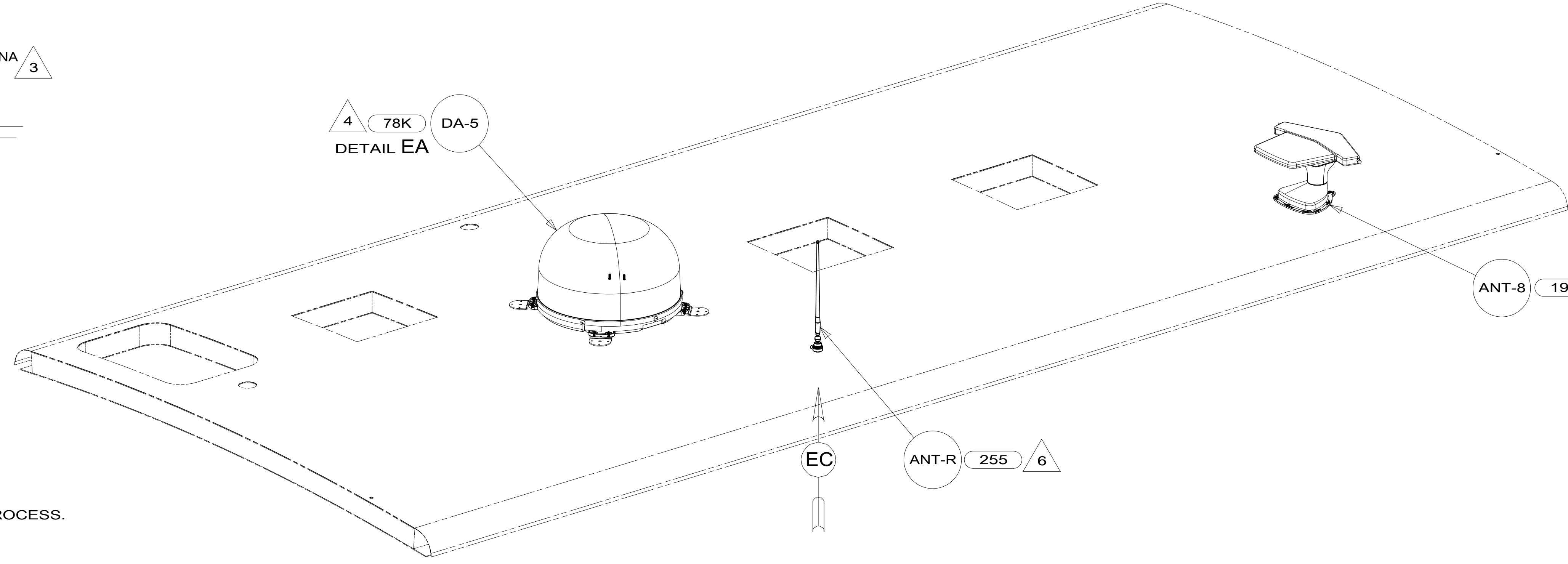
SPEAKER
179783-01-CHT (2)
SCREW
OG1208-12-170 (8)

LSH-3



VIEW EC

4 78K DA-5
DETAIL EA



ANT-8 193 2

ANT-R 255 6

EC

- 6 REMOVE GROUND WIRE FROM ANTENNA BASE.
- 5 SENSOR SUPPLIED WITH SATELLITE ASSEMBLY.
- 4 INSTALL AS SPECIFIED IN THE INSTALLATION PROCESS.
- 3 WRAP BRACKET LEGS AROUND ANTENNA BASE.
- 2 SEE ANTENNA INSTALLATION MANUAL FOR CORRECT INSTALLATION PROCEDURE.

1. SEE ROOF ASM FOR ADDITIONAL INFORMATION.

NOTES:

- 78K SATELLITE TV SYSTEM AUTO
- 193 TV ANTENNA-AMPLIFIED SYSTEM
- 255 RADIO/AM/FM/CD/DVD, COACH
- 265 CODES/STANDARDS-CSA/CMVSS
- 1B1 CODES/STANDARDS USA

1B1 265

FOR ELECTRICAL TORQUE SPECIFICATIONS SEE DWG NO. 128783-01-000

FOR ELECTRICAL CALLOUTS SEE DWG NO. 121339-01-000

FIRST USED		15 H25P	
DO NOT SCALE DRAWING			
TITLE: WIRING INSTL-BODY, 12V			
SHEET 5	PART NO	190919	REV
			17-Jul-2015

* 190919 A *

6 PIN HSG TO SLIDEOUT MOTOR WITH YELLOW TAPE

6 PIN HSG TO SLIDEOUT MOTOR WITH GREEN TAPE

WIRE ROUTED BEHIND TRIM PIECE IN THIS AREA

WIRE ROUTED BEHIND TRIM PIECE IN THIS AREA

WIRE PASSES THROUGH FLOOR TO SLIDEOUT CONTROL (WIRE ASM-CHASSIS) DETAIL AB

WIRE PASSES THROUGH FLOOR TO SLIDEOUT CONTROL (WIRE ASM-CHASSIS) DETAIL AB

VIEW FA

265 CODES/STANDARDS-CSA/CMVSS

1B1 CODES/STANDARDS USA

1B1 265

FIRST USED 15 H25P

DO NOT SCALE DRAWING

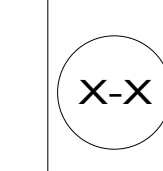
TITLE: WIRING INSTL-BODY, 12V

SHEET 6 PART NO 190919 REV

1 17-Jul-2015

FOR ELECTRICAL TORQUE SPECIFICATIONS SEE DWG NO. 128783-01-000

FOR ELECTRICAL CALLOUTS SEE DWG NO. 121339-01-000



A * 190919 *