



DANGER

Danger of electrical shock, burns or death. Always remove all power sources before attempting any repair, service or diagnostic work. Power can be present from shore power, generator, inverter or battery. All power sources must be disabled and secured before performing any service.



CAUTION

If you lack the skills, tools or equipment to perform diagnostic or repair work leave such work to an authorized Winnebago Industries dealer or other qualified shop.

8	7	6	5	4	3	2	1
DRAWING NO.	MODEL	SHEETS					
190637-01	623L	1,2,3					
190637-02	623B	1,2,3					

RELEASE A REV/DATE DWG NO. 190637
 REV ZONE REVISION RECORD DATE DFT-ORIG

		623L	623B
RED	1B1	136135-07-042	136135-07-045
	265	136136-07-042	136136-07-045
YEL	1B1	136131-05-014	136131-05-018
	265	136134-05-014	136134-05-018
BLK	1B1	136135-06-045	136135-06-038
	265	136136-06-045	136136-06-038
BRN	1B1	136131-03-045	136131-03-045
	265	136134-03-045	136134-03-045
BLU	1B1	136131-02-136	136131-02-150
	265	136134-02-136	136134-02-150
BLK-2	1B1		
	265		
WHT	1B1		
	265		
GENERATOR EXTENSION	1B1	136137-01-065	
	265	136138-01-065	
MAIN	1B1	136137-01-080	136137-01-045
	265	136138-01-080	136138-01-045
GROUND MAIN		136145-06-025	136145-06-025

265 CODES/STANDARDS-CSA/CMVSS
 1B1 CODES/STANDARDS USA
 1B1 265

WINNEBAGO COPYRIGHT 2014 WINNEBAGO INDUSTRIES, INC.

DFTR _____ ORIG. DATE _____
 CKRR _____
 P.E. _____ ALL DIMENSIONS ARE IN MILLIMETERS
 M.E. _____ FIRST USED _____
 DSNR _____ 15 600-SERIES

UNSPECIFIED TOLERANCES ARE:
 WHOLE DIM (X) : 3
 ONE-PLACE (X.X) : 1.5
 TWO-PLACE (X.XX) : 0.50
 ANGLE : 1°

THIRD ANGLE PROJECTION

DO NOT SCALE DRAWING REFER TO ES0018 FOR FASTENER TIGHTENING GUIDELINES

TITLE: **LOAD CENTER/ATS ASM**

SHEET 1 OF 3 PART NO. 190637 REV _____

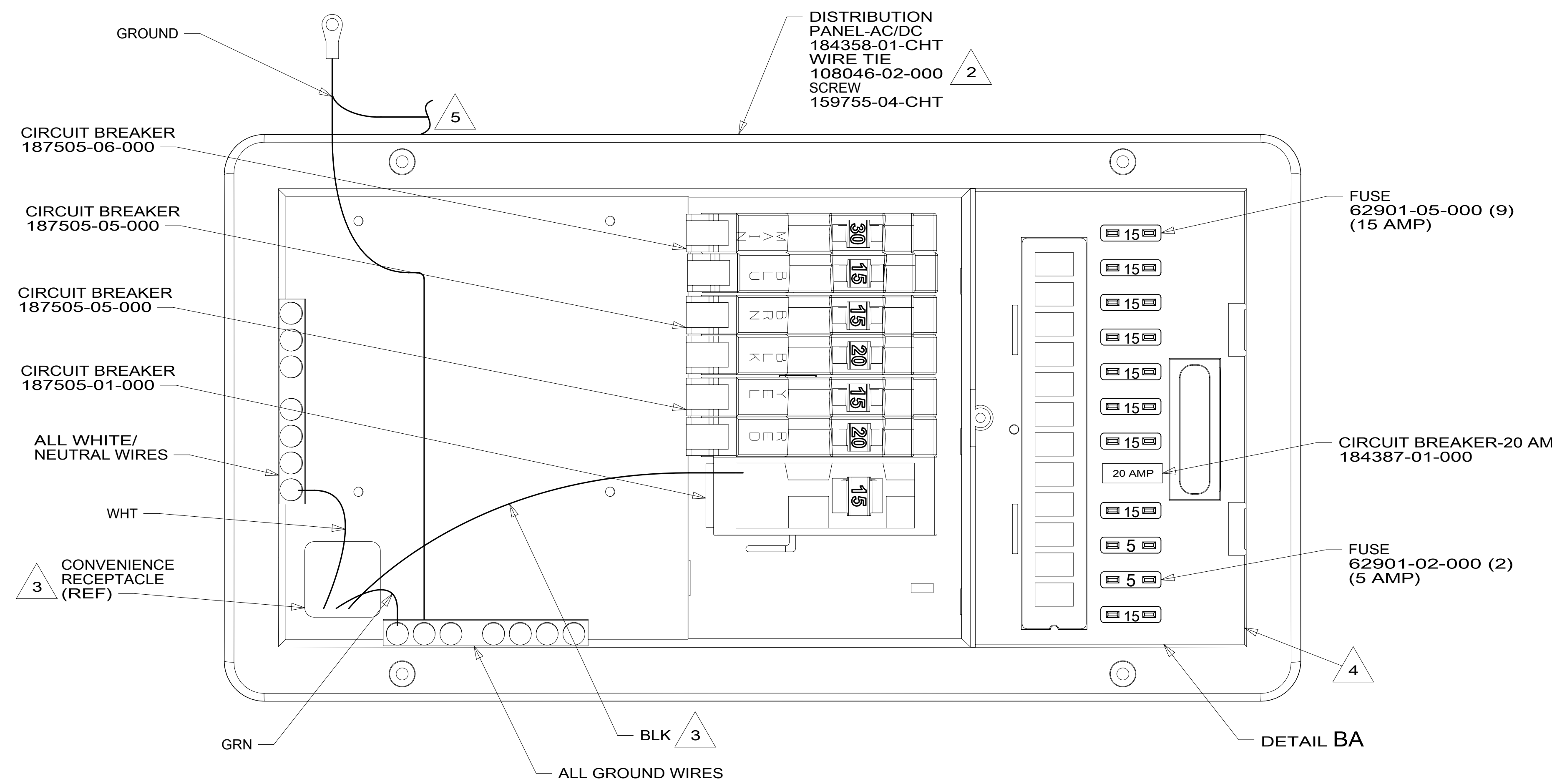
REF: 1 12-Nov-2015

- NOTES:
1. ALL GROUNDS WIRES TO BE COVERED WITH TUBING 8041-02-000.
 2. SECURE WIRES TO BACKSIDE OF LOAD CENTER WITH WIRE TIE 116673-01-000.
 3. SEE WIRING INSTL-BODY,12V FOR ADDITIONAL INFORMATION.

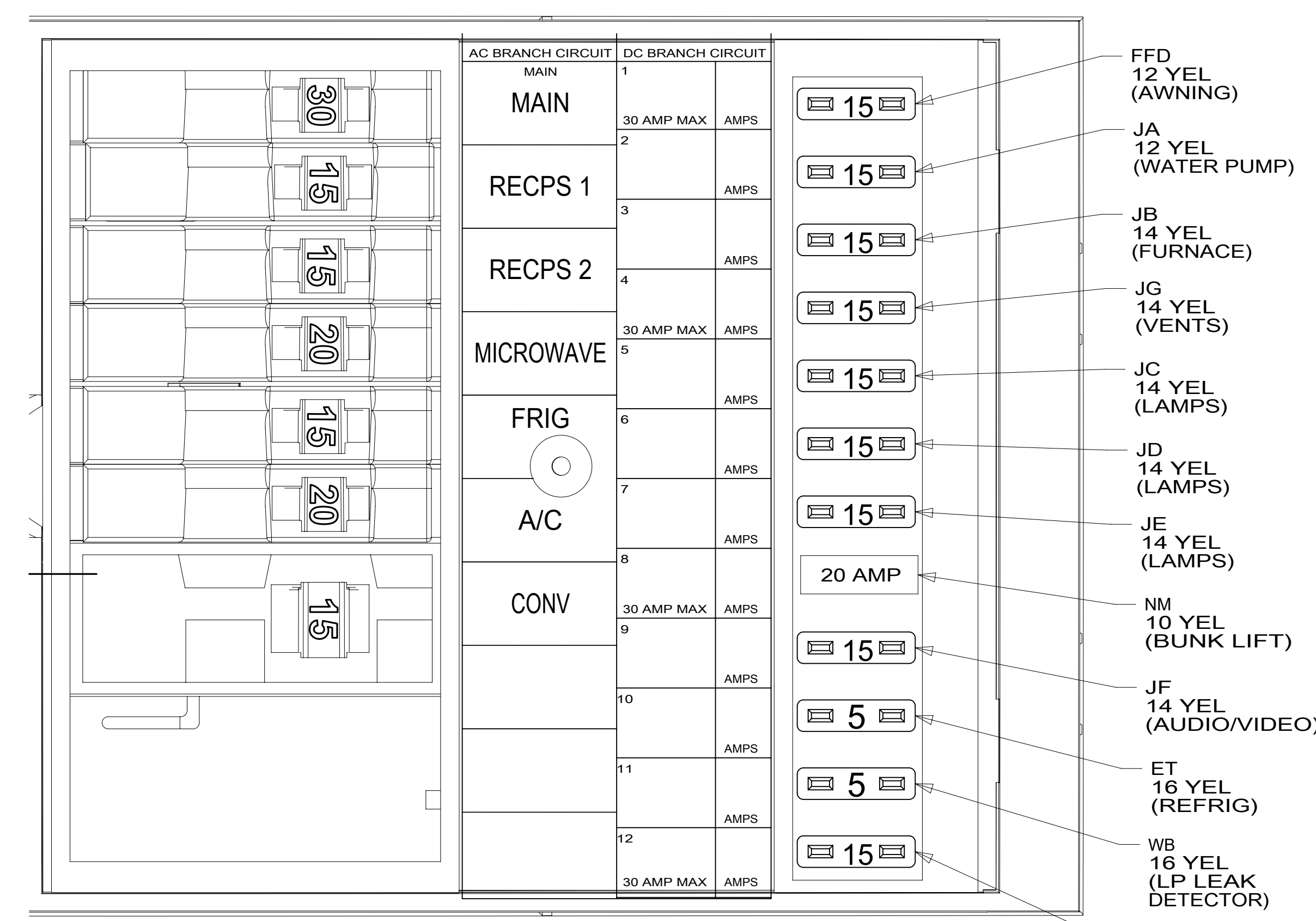
FOR ELECTRICAL TORQUE SPECIFICATIONS SEE DWG NO. 128783-01-000

FOR ELECTRICAL CALLOUTS SEE DWG NO. 121339-01-000

190637



- 5 CONNECT ONE GROUND WIRE TO GROUND BAR INSIDE DISTRIBUTION PANEL. CONNECT ONE GROUND WIRE TO DC GROUND BAR ON BACK SIDE OF DISTRIBUTION PANEL.
- 4 SEE WIRING INSTL-BODY, 12V FOR ADDITIONAL INFORMATION.
- 3 CONNECT BLACK WIRE FROM CONVENIENCE RECEPTACLE TO DEDICATED CIRCUIT BREAKER.
- 2 ATTACH TO UNUSED SCREW HOLE ON BACK SIDE OF PANEL TO SECURE WIRES.
1. ALL GROUND WIRES TO BE COVERED WITH TUBING 8041-02-000.



DETAIL BA

FOR ELECTRICAL TORQUE SPECIFICATIONS SEE DWG NO. 128783-01-000

FOR ELECTRICAL CALLOUTS SEE DWG NO. 121339-01-000

- 265 CODES/STANDARDS-CSA/CMVSS
- 1B1 CODES/STANDARDS USA
- 1B1 265

FIRST USED

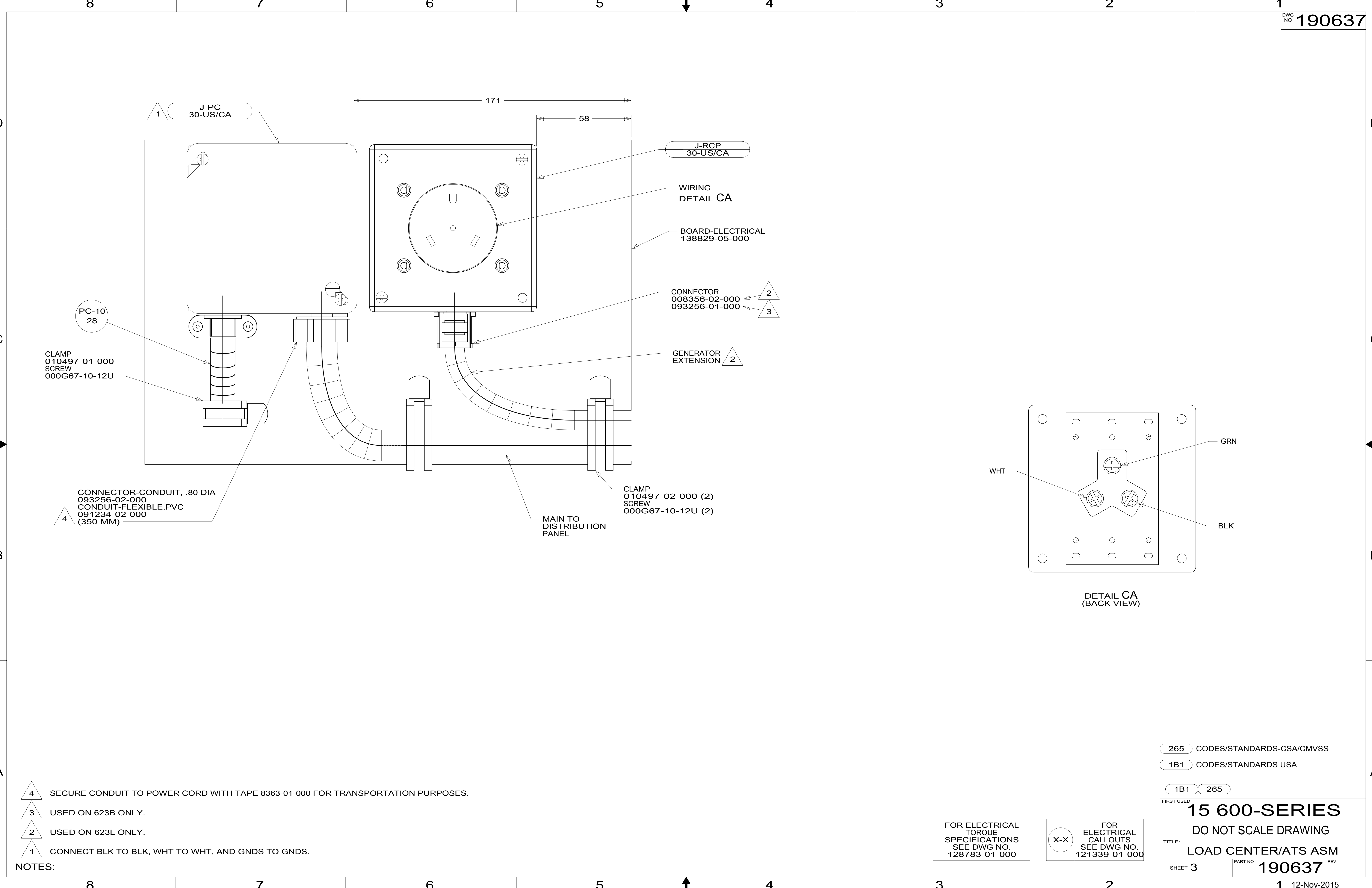
15 600-SERIES

DO NOT SCALE DRAWING

TITLE: **LOAD CENTER/ATS ASM**

SHEET 2 PART NO **190637** REV

*190637



PC-10
28

CLAMP
010497-01-000
SCREW
000G67-10-12U

CONNECTOR-CONDUIT, .80 DIA
093256-02-000
CONDUIT-FLEXIBLE,PVC
091234-02-000
(350 MM)

1 J-PC
30-US/CA

J-RCP
30-US/CA

WIRING
DETAIL CA

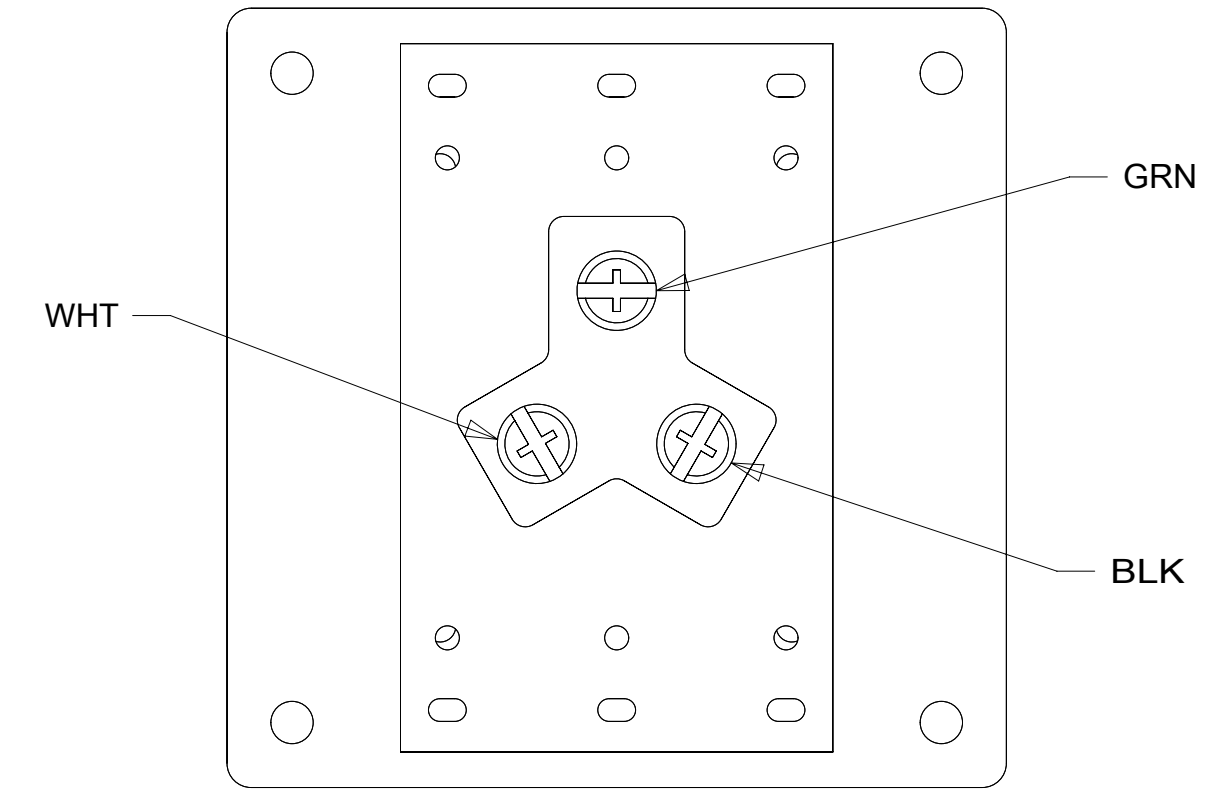
BOARD-ELECTRICAL
138829-05-000

CONNECTOR
008356-02-000
093256-01-000

GENERATOR
EXTENSION 2

CLAMP
010497-02-000 (2)
SCREW
000G67-10-12U (2)

MAIN TO
DISTRIBUTION
PANEL



DETAIL CA
(BACK VIEW)

- NOTES:
- 4 SECURE CONDUIT TO POWER CORD WITH TAPE 8363-01-000 FOR TRANSPORTATION PURPOSES.
 - 3 USED ON 623B ONLY.
 - 2 USED ON 623L ONLY.
 - 1 CONNECT BLK TO BLK, WHT TO WHT, AND GNDS TO GNDS.

265 CODES/STANDARDS-CSA/CMVSS
1B1 CODES/STANDARDS USA

1B1	265
FIRST USED	
15 600-SERIES	
DO NOT SCALE DRAWING	
TITLE: LOAD CENTER/ATS ASM	
SHEET 3	PART NO 190637 REV

FOR ELECTRICAL
TORQUE
SPECIFICATIONS
SEE DWG NO.
128783-01-000

X-X
FOR
ELECTRICAL
CALLOUTS
SEE DWG NO.
121339-01-000

190637