



**DANGER**

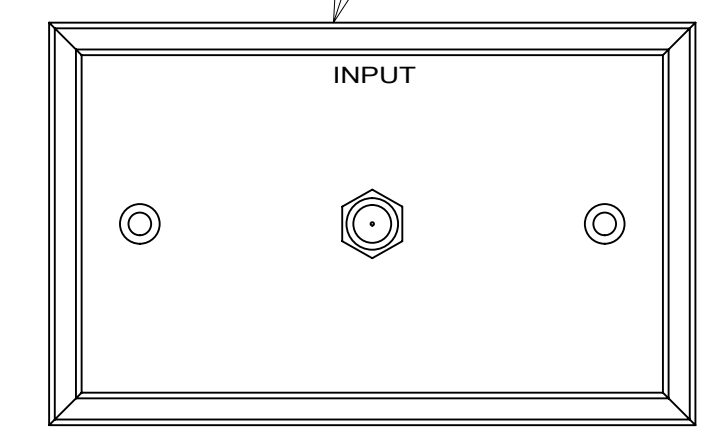
**Danger of electrical shock, burns or death.** Always remove all power sources before attempting any repair, service or diagnostic work. Power can be present from shore power, generator, inverter or battery. All power sources must be disabled and secured before performing any service.



**CAUTION**

If you lack the skills, tools or equipment to perform diagnostic or repair work leave such work to an authorized Winnebago Industries dealer or other qualified shop.

PLATE-WALL, DUAL COAX  
 149557-07-CHT  
 SCREW  
 G39-08-08U (2)



VIEW AA

CONTROL-SLIDEOUT  
 178451-01-000  
 SCREW  
 G67-10-12U (6)  
 DETAIL AB

4 WIRE ASM-MAIN  
 HOLDING TANK  
 151317-02-000

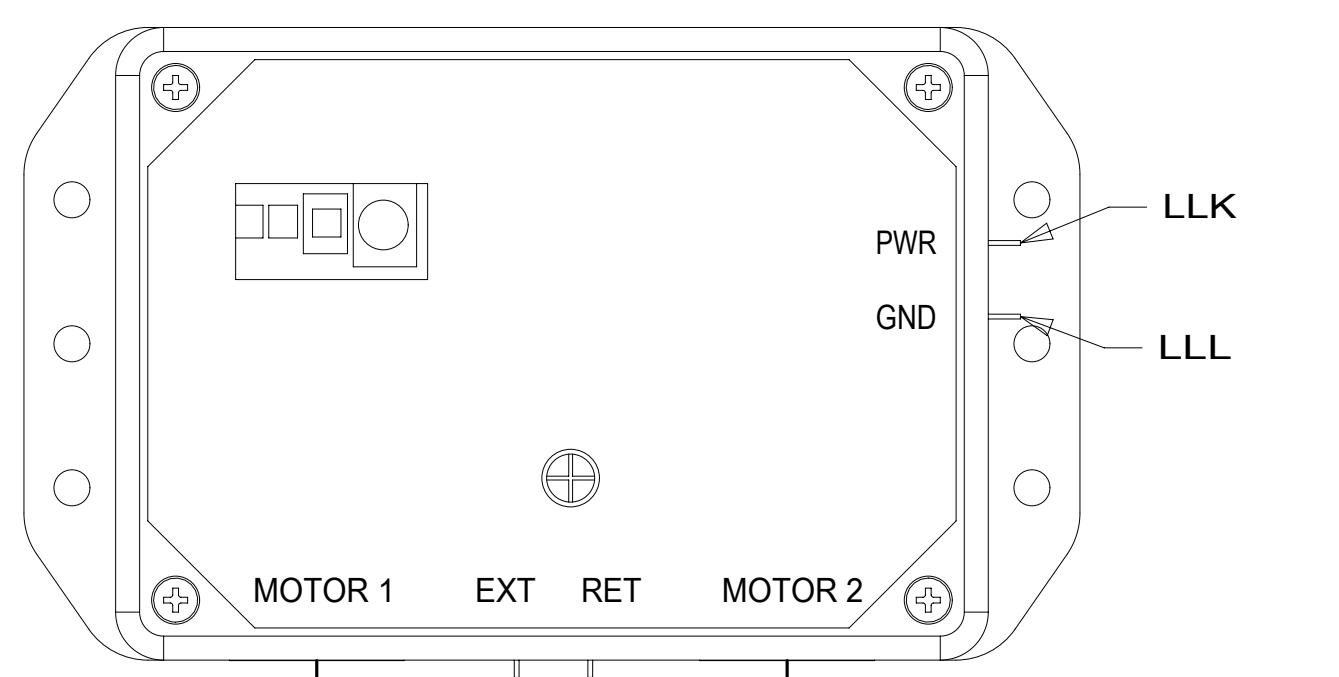
2 PIN HOUSING  
 TO WIRE ASM-MAIN  
 HOLDING TANK

COAX (RED)  
 TO CABLE INPUT

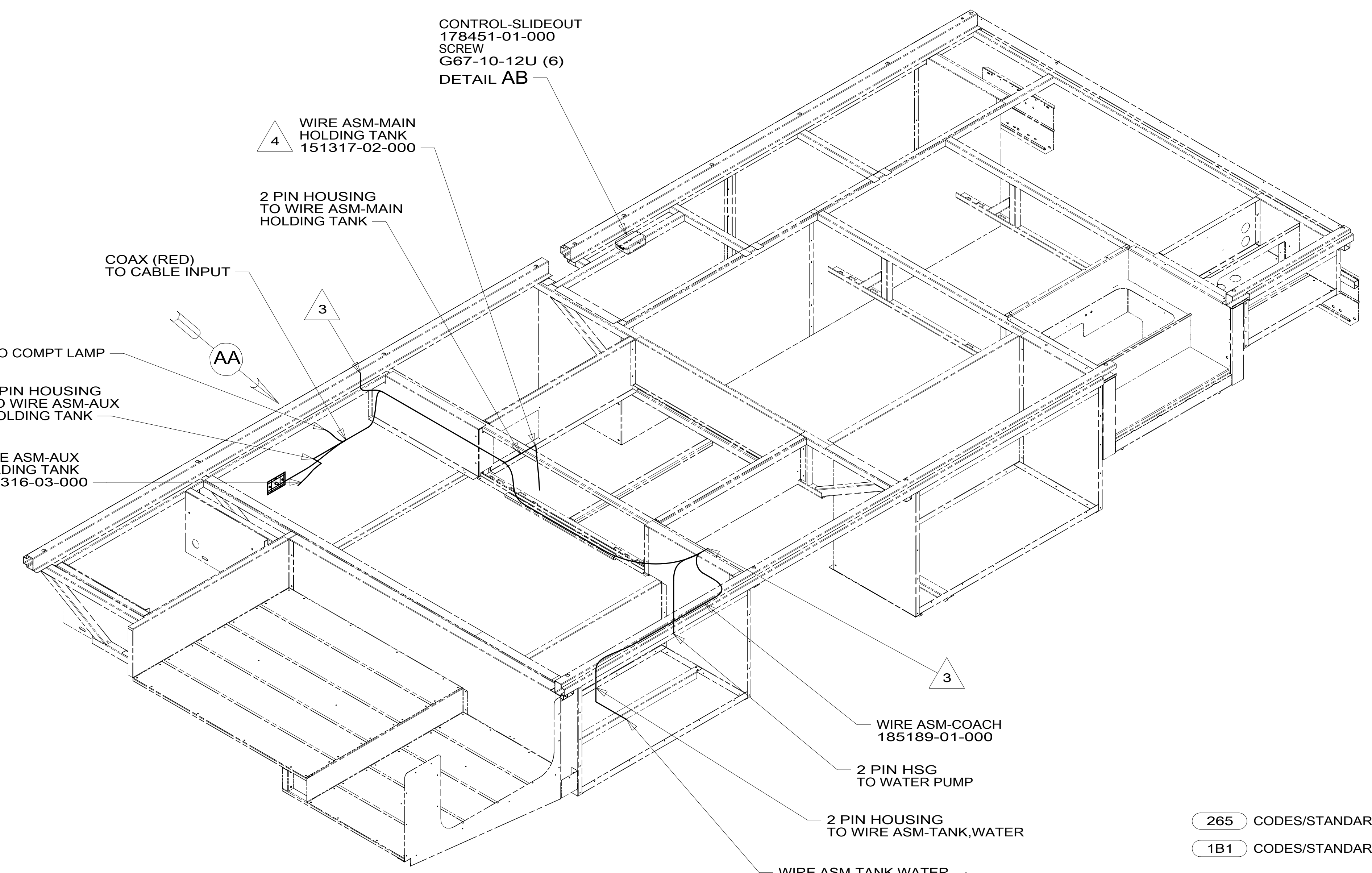
TO COMPT LAMP

2 PIN HOUSING  
 TO WIRE ASM-AUX  
 HOLDING TANK

WIRE ASM-AUX  
 HOLDING TANK  
 151316-03-000



DETAIL AB



CABLE ASM  
 178398-01-000

DR

DU

CABLE ASM  
 178398-03-000

ROUTE TO  
 REAR MOTOR

ROUTE TO  
 FRONT MOTOR

265 CODES/STANDARDS-CSA/CMVSS  
 1B1 CODES/STANDARDS USA

1B1 265



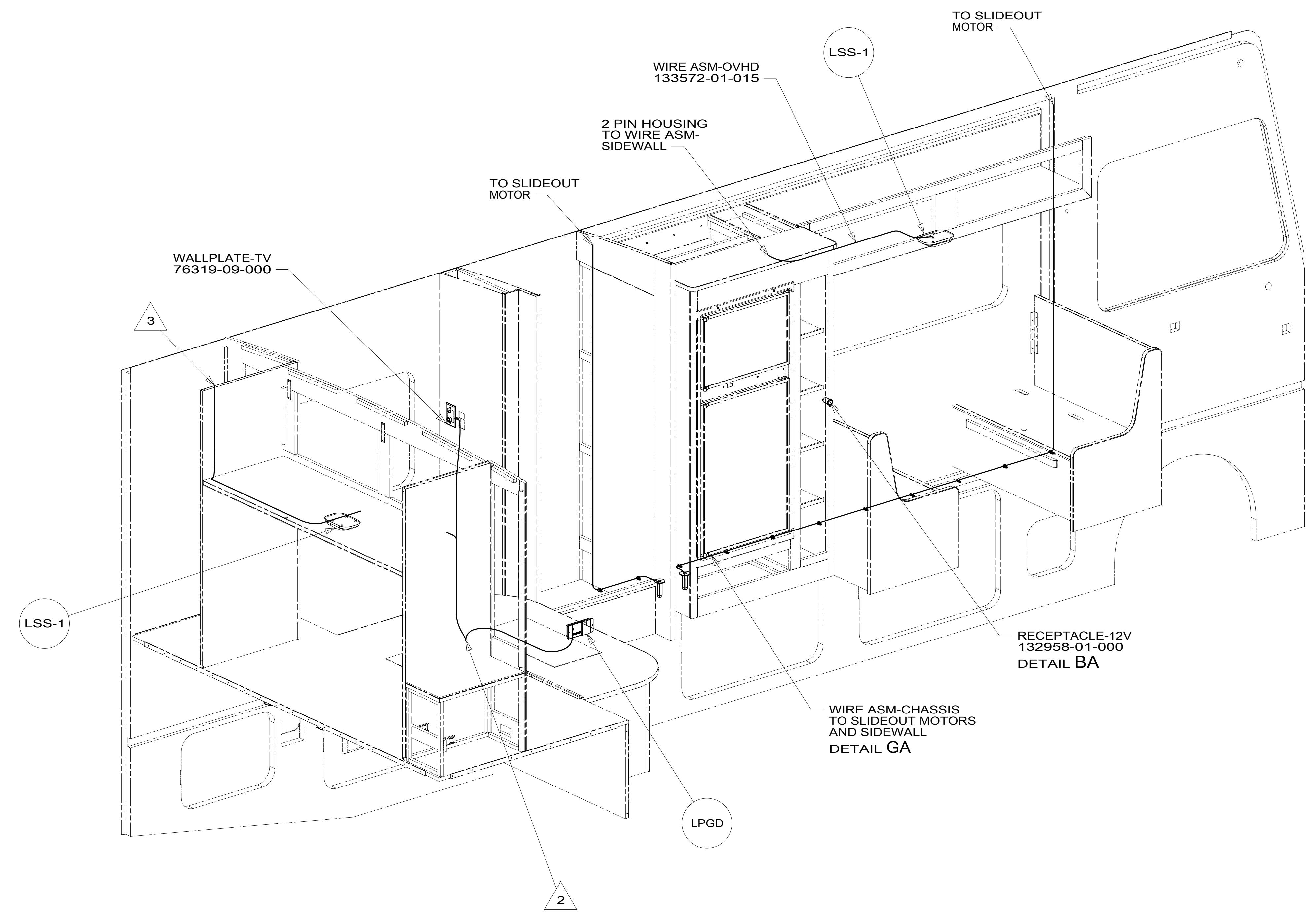
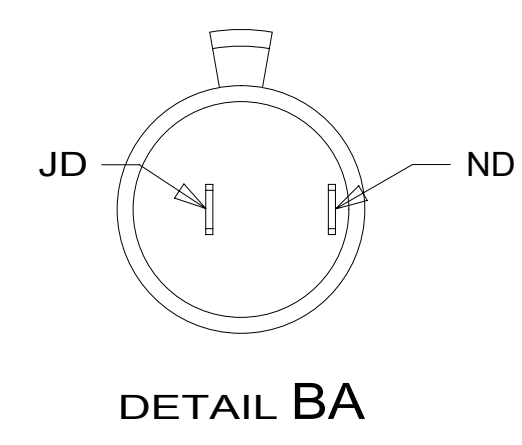
DTR	ORIG. DATE
CHKR	ALL DIMENSIONS ARE IN MILLIMETERS
P.E.	
M.E.	FIRST USED
DSNR	15 E26HE
UNSPECIFIED TOLERANCES ARE:	
WHOLE DIM (X)	: 3
ONE-PLACE (X.X)	: 1.5
TWO-PLACE (X.XX)	: 0.50
ANGLE	: 1°
THIRD ANGLE PROJECTION	
DO NOT SCALE DRAWING	REFER TO ES0018 FOR FASTENER TIGHTENING GUIDELINES
TITLE: WIRING INSTL-BODY, 12V	
SHEET 1 OF 7	PART NO 190517 REV
REF:	1 13-Mar-2015

- 4 PLACE CROSS LOCATOR ON SENSORS OVER DIMPLES ON TANK.
- 3 WIRE PASSES THROUGH FLOOR IN THIS AREA.
2. ROUTE TANK SENSOR WIRES SO THEY DO NOT PASS OVER SENSORS. USE WIRE TIE MOUNT 155366-01-000 AND WIRE TIE 8343-01-000 AS NEEDED. TANK SURFACE MUST BE CLEANED USING ISOPROPYL ALCOHOL AND PRIMED WITH PRIMER 94.
1. AT MINIMUM ALL WIRES TO BE SUPPORTED AND SECURED PER CODE REQUIREMENTS. USE CLAMP 10495 OR 10497 OR WIRE TIE 8343 OR 108046 AND SCREW G67-XX-XXX OR G56-XX-XXX AS APPROPRIATE FOR INSTALLATION.

FOR ELECTRICAL TORQUE SPECIFICATIONS SEE DWG NO. 128783-01-000

FOR ELECTRICAL CALLOUTS SEE DWG NO. 121339-01-000

\*190517\*



- 3 WIRE FROM ROOF.
- 2 WIRE PASSES THROUGH FLOOR IN THIS AREA.

1. AT MINIMUM ALL WIRES TO BE SUPPORTED AND SECURED PER CODE REQUIREMENTS. USE CLAMP 10495 OR 10497 OR WIRE TIE 8343 OR 108046 AND SCREW G67-XX-XXX OR G56-XX-XXX AS APPROPRIATE FOR INSTALLATION.

NOTES:

265 CODES/STANDARDS-CSA/CMVSS

1B1 CODES/STANDARDS USA

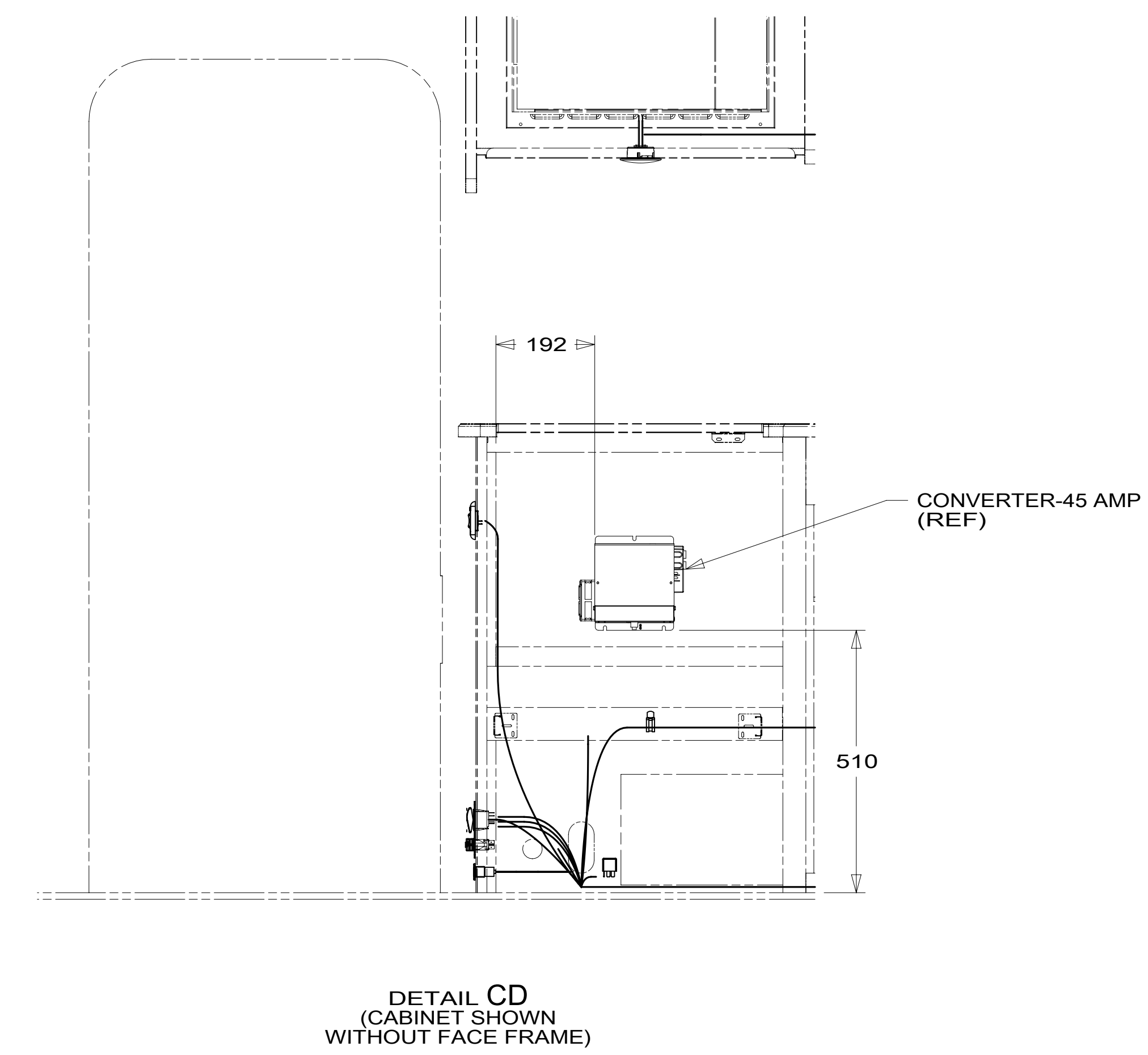
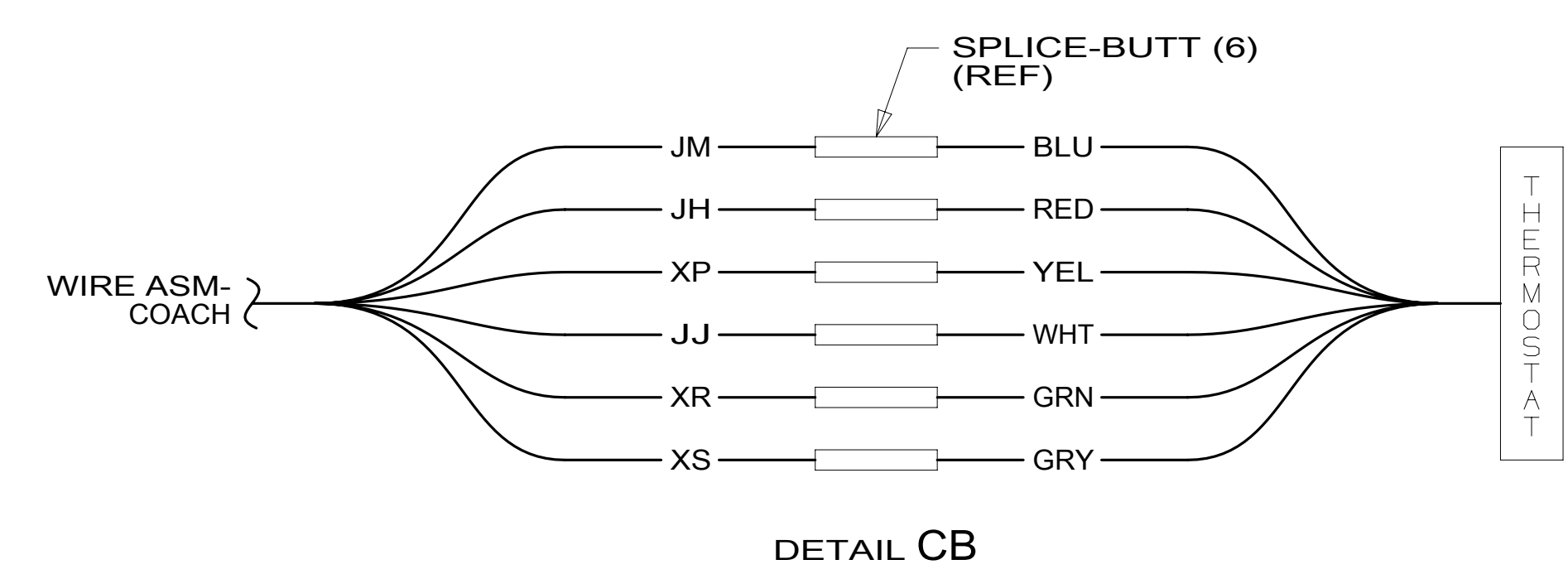
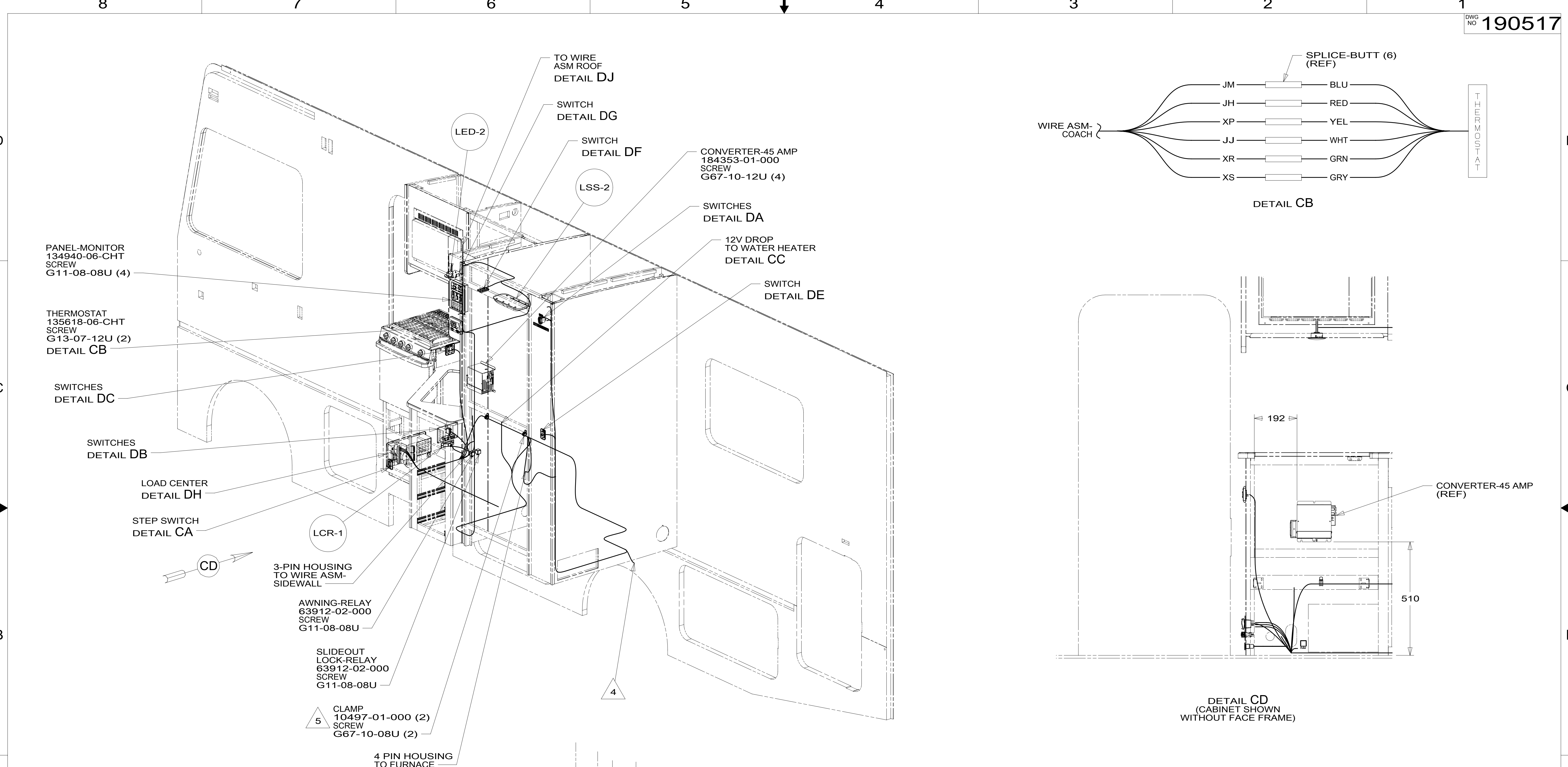
1B1 265

FIRST USED		
<b>15 E26HE</b>		
<b>DO NOT SCALE DRAWING</b>		
<b>TITLE: WIRING INSTL-BODY, 12V</b>		
SHEET 2	PART NO <b>190517</b>	REV

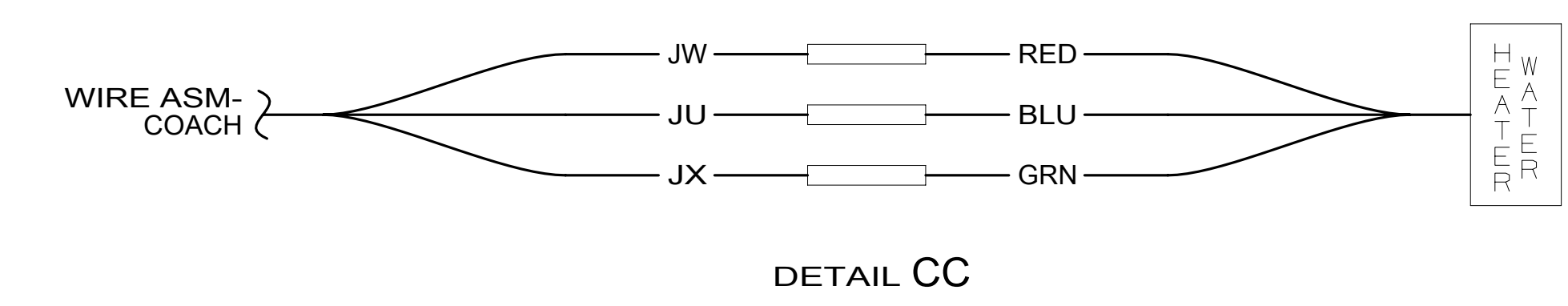
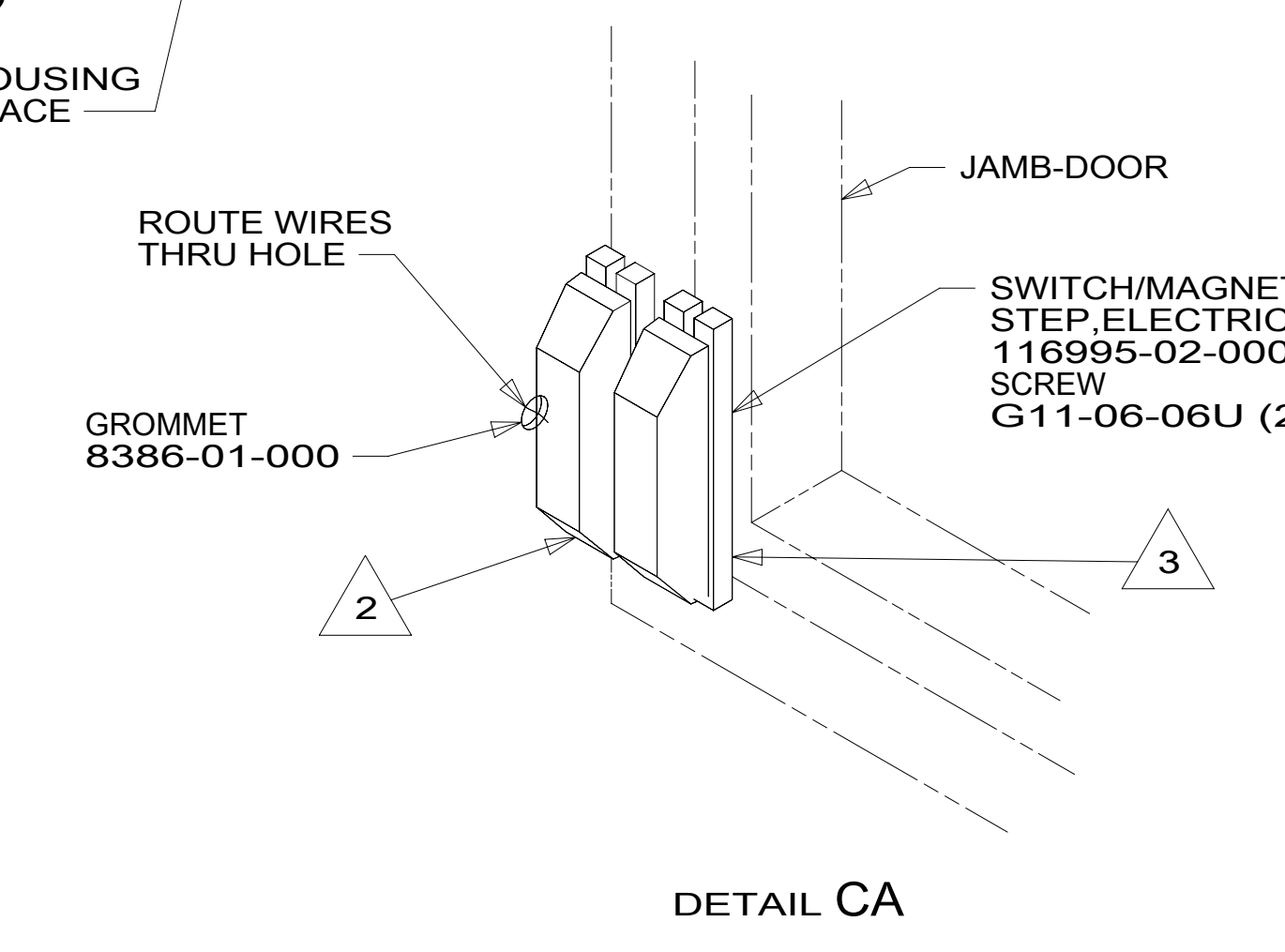
FOR ELECTRICAL TORQUE SPECIFICATIONS SEE DWG NO. 128783-01-000

FOR ELECTRICAL CALLOUTS SEE DWG NO. 121339-01-000

\*190517\*



- NOTES:
- 5 ROUTE WIRES THROUGH CLAMP TO KEEP OFF OF THE TOP OF THE FURNACE.
  - 4 WIRE PASSES THROUGH FLOOR IN THIS AREA.
  - 3 MOUNT MAGNET TO SCREEN DOOR FRAME, MOUNT WITH MAGNET TOWARD SWITCH.
  - 2 MOUNT SWITCH TO DOOR JAMB WITH TAPE 076322-21-000.
  - 1. AT MINIMUM ALL WIRES TO BE SUPPORTED AND SECURED PER CODE REQUIREMENTS. USE CLAMP 10495 OR 10497 OR WIRE TIE 8343 OR 108046 AND SCREW G67-XX-XXX OR G56-XX-XXX AS APPROPRIATE FOR INSTALLATION.



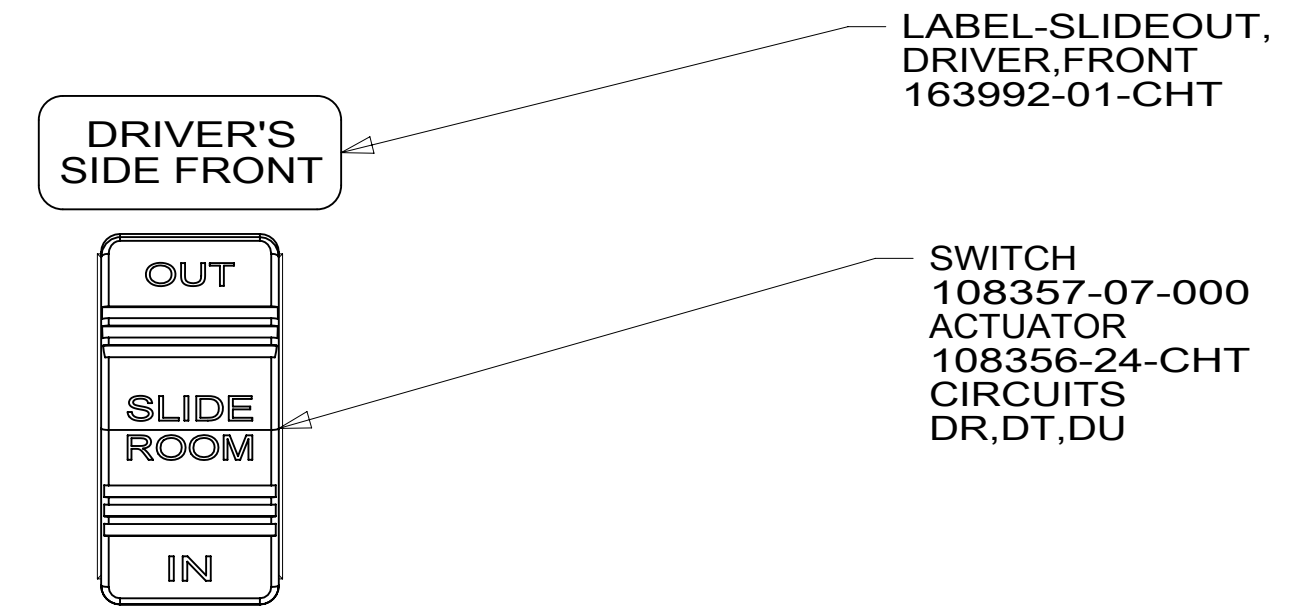
265 CODES/STANDARDS-CSA/CMVSS  
 1B1 CODES/STANDARDS USA

1B1	265
FIRST USED	
<b>15 E26HE</b>	
<b>DO NOT SCALE DRAWING</b>	
<b>WIRING INSTL-BODY, 12V</b>	
SHEET 3	PART NO 190517 REV

FOR ELECTRICAL TORQUE SPECIFICATIONS SEE DWG NO. 128783-01-000

FOR ELECTRICAL CALLOUTS SEE DWG NO. 121339-01-000

\*190517\*



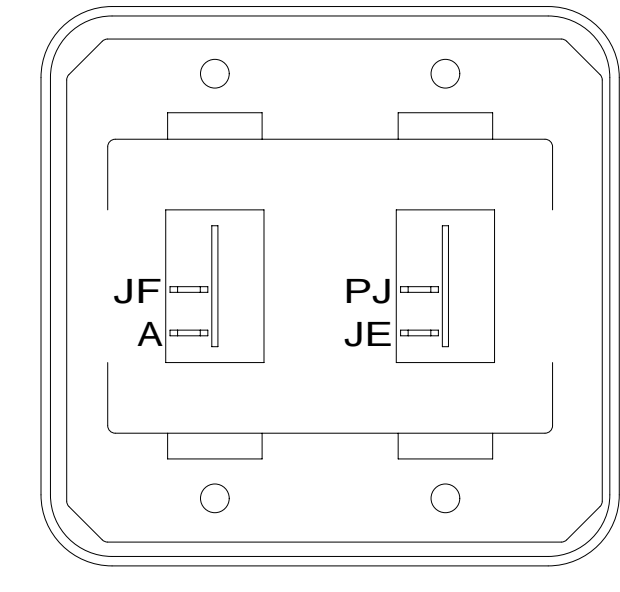
LABEL-SLIDEOUT, DRIVER,FRONT 163992-01-CHT

SWITCH 108357-07-000 ACTUATOR 108356-24-CHT CIRCUITS DR,DT,DU

**WARNING** CRUSH HAZARD. Keep people and objects clear of the inside and the outside of the slideout room when operating. Failure to comply could result in death or serious injury.

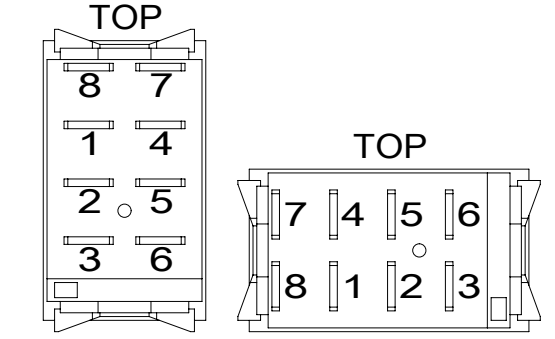
LABEL-WARNING, SLIDEOUT 116549-01-000

DETAIL DA

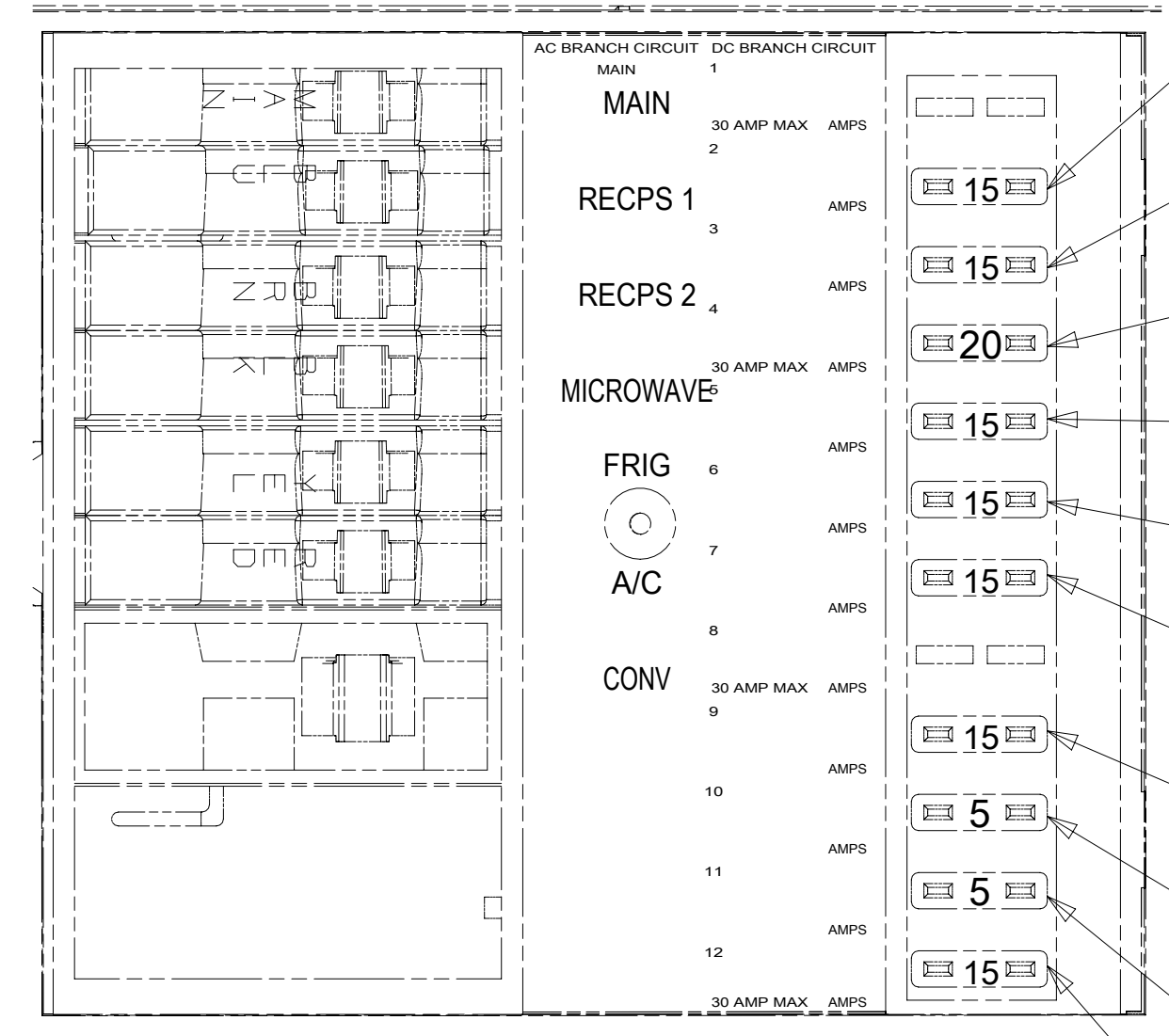


SWITCH-ROCKER 135740-01-CHT (2)  
SWITCH-BASE 135741-02-CHT  
SWITCH-BEZEL 135742-02-CHT  
SCREW G11-08-08U (4)

DETAIL DC

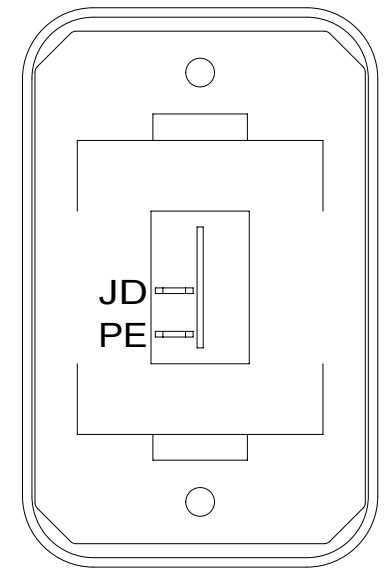


DETAIL DD



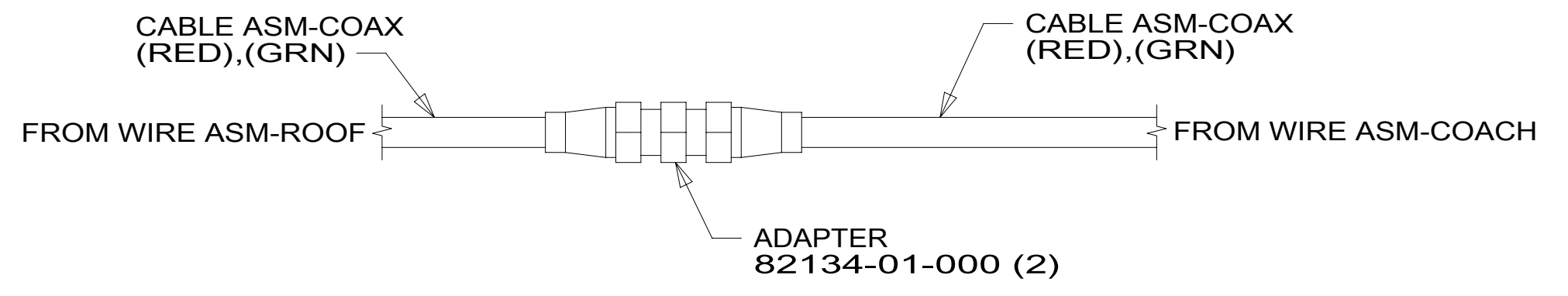
DETAIL DH

- JA 12 YEL (WATER PUMP) (ISOLATED CIRCUIT)
- JB 14 YEL (FURNACE)
- EEC 12 YEL (LOFT BED) 45B
- JC 14 YEL (LAMPS)
- JD 14 YEL (LAMPS)
- JE 14 YEL (MONITOR PANEL AND LAMPS)
- JF 14 YEL (AUDIO/VIDEO)
- ET 16 YEL (REFRIG)
- WB 16 YEL (LP LEAK DETECTOR)
- WC 14 YEL (COMPT LAMP)



SWITCH-ROCKER 135740-01-CHT  
SWITCH-BASE 135741-01-CHT  
SWITCH-BEZEL 135742-01-CHT  
SCREW G11-08-08U (2)

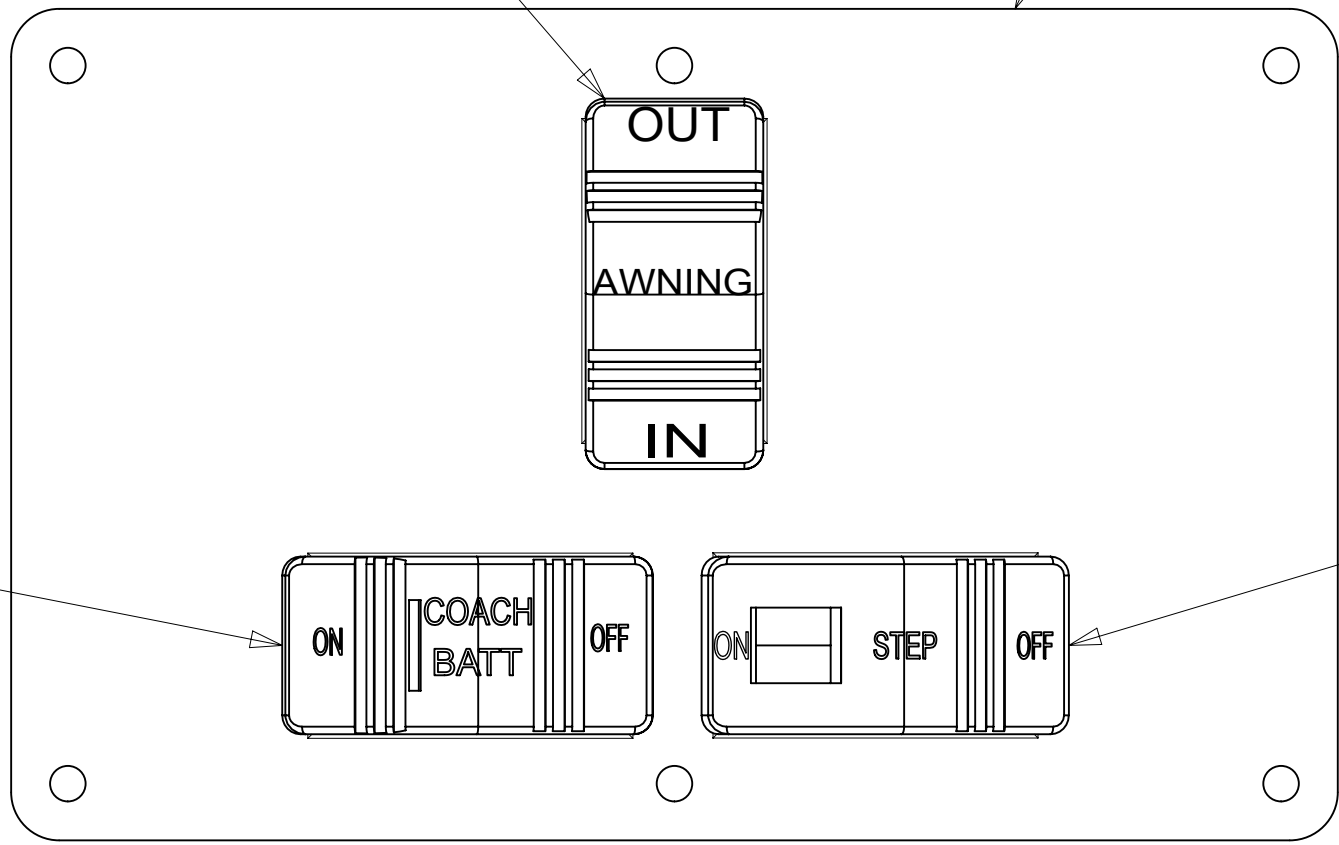
DETAIL DE



DETAIL DJ

SWITCH-AWNING 108357-06-000 ACTUATOR-SWITCH 108356-12-CHT CIRCUITS FFD,FFR,FFE FFE,JJR,FFD

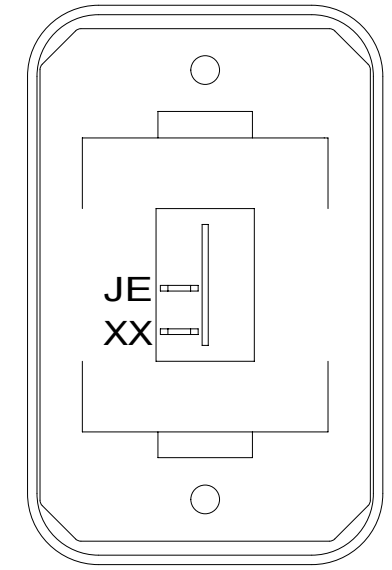
PLATE-SWITCH 158431-10-CHT SCREW G11-06-10U (6)



DETAIL DB 1

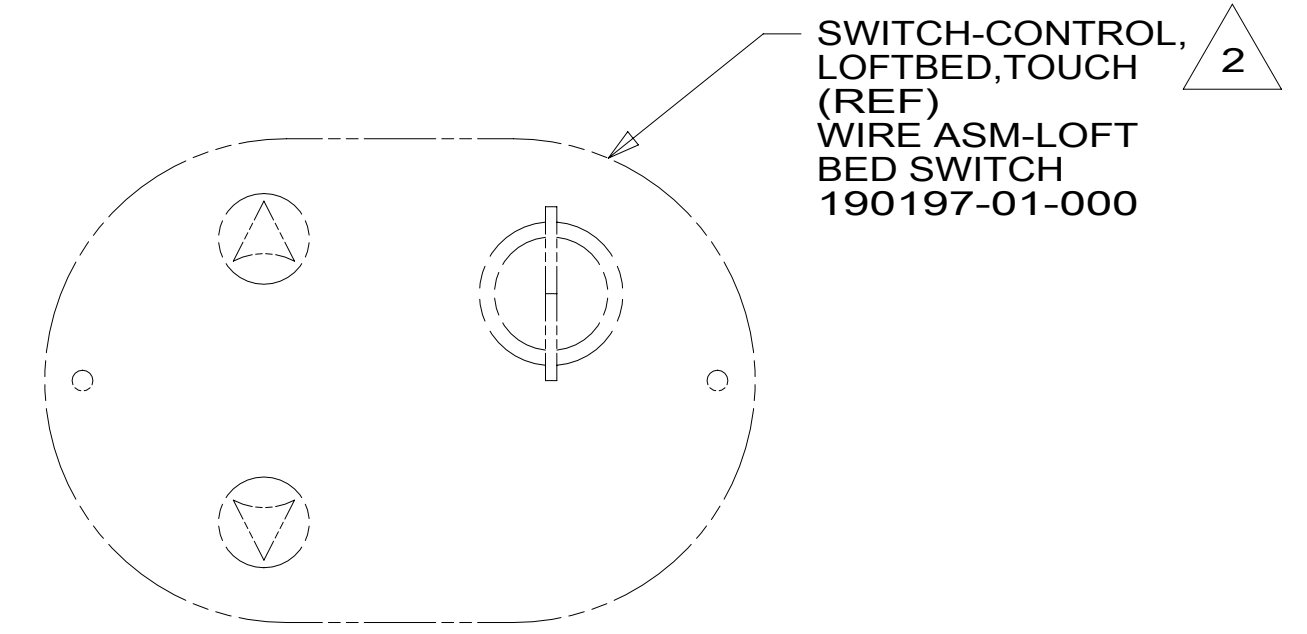
SWITCH-COACH BATTERY 108357-18-000 ACTUATOR-SWITCH 108356-19-CHT CIRCUITS KF,LG,LJ,LH,WC WIRE ASM-THERM 186796-01-000

SWITCH-STEP 108357-19-000 CIRCUITS ER,ES



SWITCH-ROCKER 135740-01-CHT  
SWITCH-BASE 135741-01-CHT  
SWITCH-BEZEL 135742-01-CHT  
SCREW G11-08-08U (2)

DETAIL DF



DETAIL DG 45B

SWITCH-CONTROL, LOFTBED, TOUCH (REF) WIRE ASM-LOFT BED SWITCH 190197-01-000

- 45B LOFT BED
- 265 CODES/STANDARDS-CSA/CMVSS
- 1B1 CODES/STANDARDS USA

1B1 265

FIRST USED	<b>15 E26HE</b>	
TITLE:	<b>DO NOT SCALE DRAWING</b>	
	<b>WIRING INSTL-BODY, 12V</b>	
SHEET 4	PART NO <b>190517</b>	REV

FOR ELECTRICAL TORQUE SPECIFICATIONS SEE DWG NO. 128783-01-000

FOR ELECTRICAL CALLOUTS SEE DWG NO. 121339-01-000

- 2 SEE WIRING INSTL-FRONT END FOR ADDITIONAL INFORMATION.
- 1 FOR SWITCH ORIENTATION SEE DETAIL DD.

NOTES:

\* 190517 \*

8

7

6

5

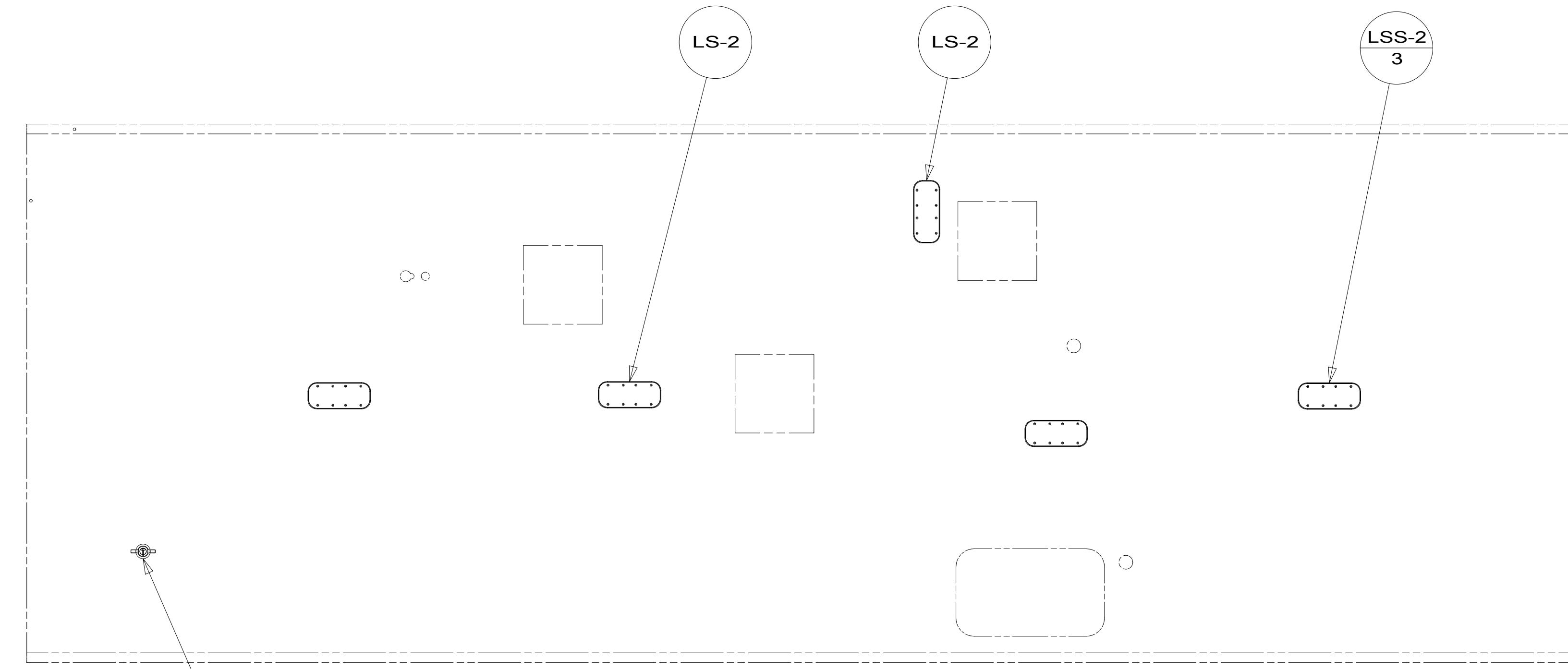
4

3

2

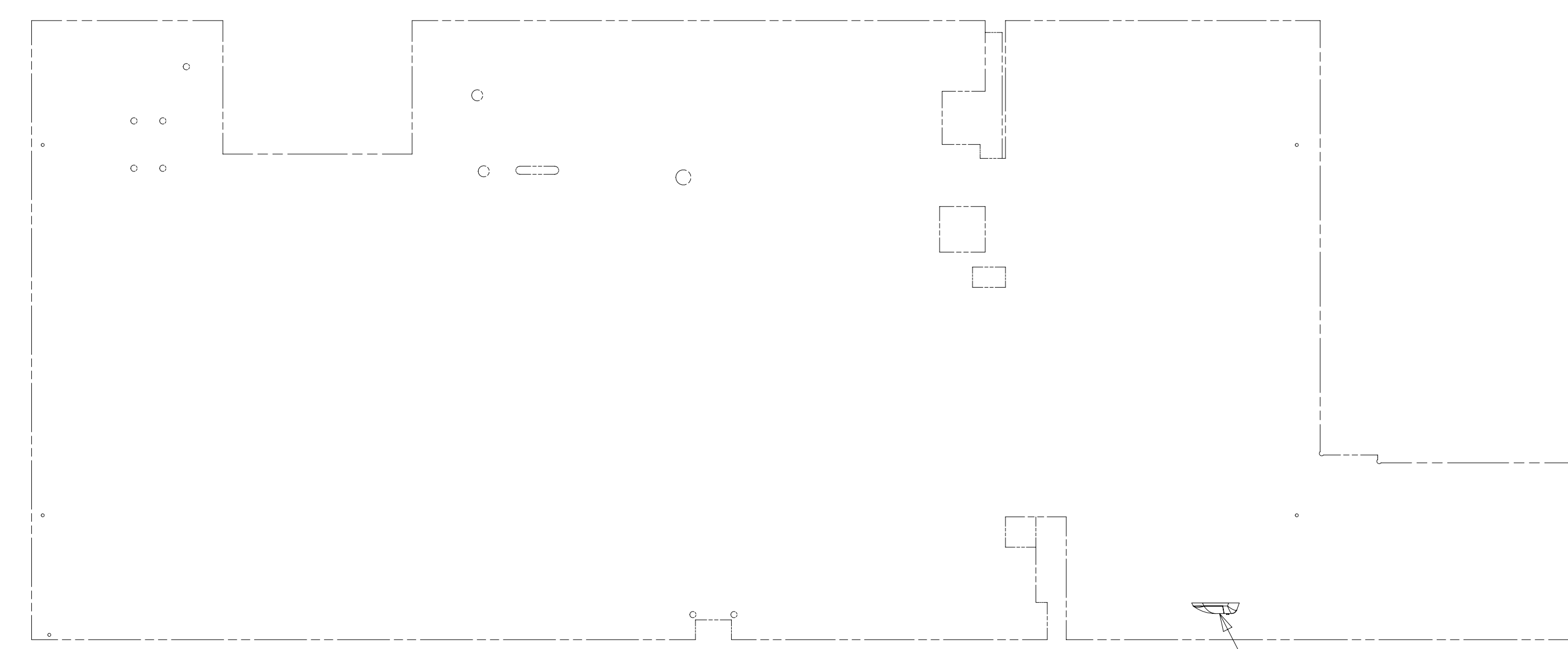
1

1



LIGHT-LED,  
SWIVEL W/SWITCH  
190024-01-CHT

45B



- 45B LOFT BED
- 265 CODES/STANDARDS-CSA/CMVSS
- 1B1 CODES/STANDARDS USA

1B1 265

FIRST USED	<b>15 E26HE</b>	
	DO NOT SCALE DRAWING	
TITLE:	<b>WIRING INSTL-BODY, 12V</b>	
SHEET 5	PART NO <b>190517</b>	REV

FOR ELECTRICAL  
TORQUE  
SPECIFICATIONS  
SEE DWG NO.  
128783-01-000

X-X  
FOR  
ELECTRICAL  
CALLOUTS  
SEE DWG NO.  
121339-01-000

8

7

6

5

4

3

2

1

1 13-Mar-2015

\*190517\*



8

7

6

5

↓

4

3

2

1

D

D

C

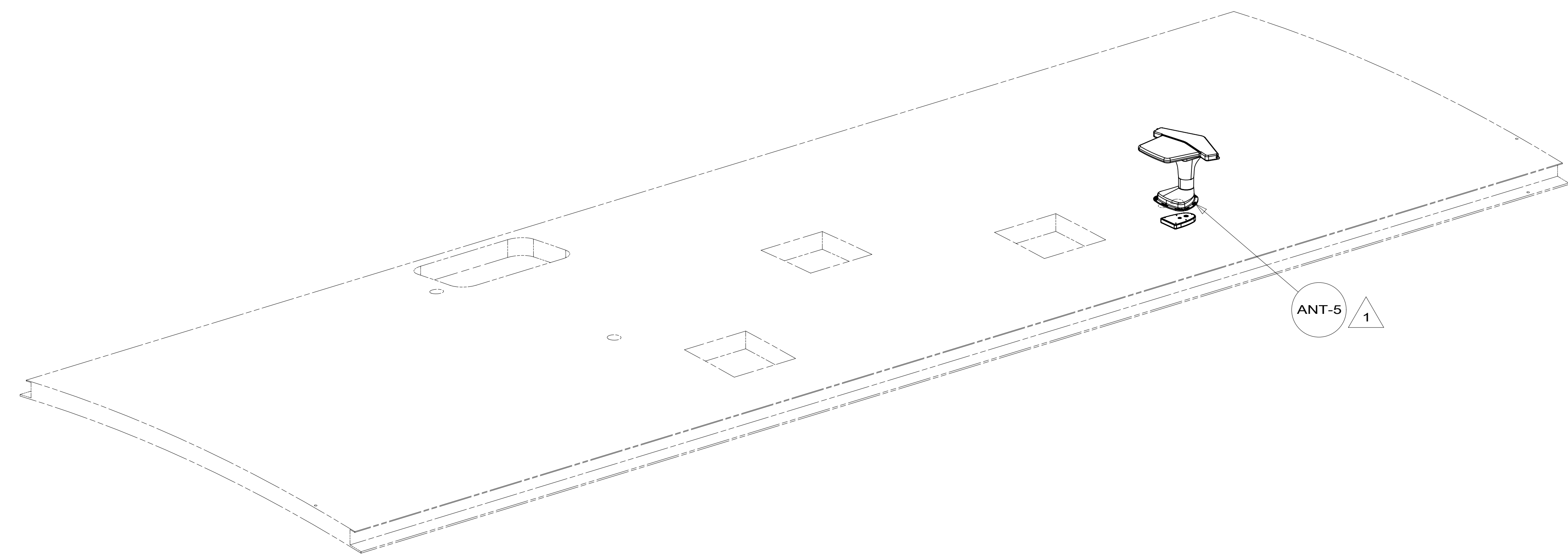
C

B

B

A

A



ANT-5 1

NOTES:

1 SEE ANTENNA INSTALLATION MANUAL FOR CORRECT INSTALLATION PROCEDURE.

FOR ELECTRICAL TORQUE SPECIFICATIONS SEE DWG NO. 128783-01-000

FOR ELECTRICAL CALLOUTS SEE DWG NO. 121339-01-000

265 CODES/STANDARDS-CSA/CMVSS

1B1 CODES/STANDARDS USA

1B1 265

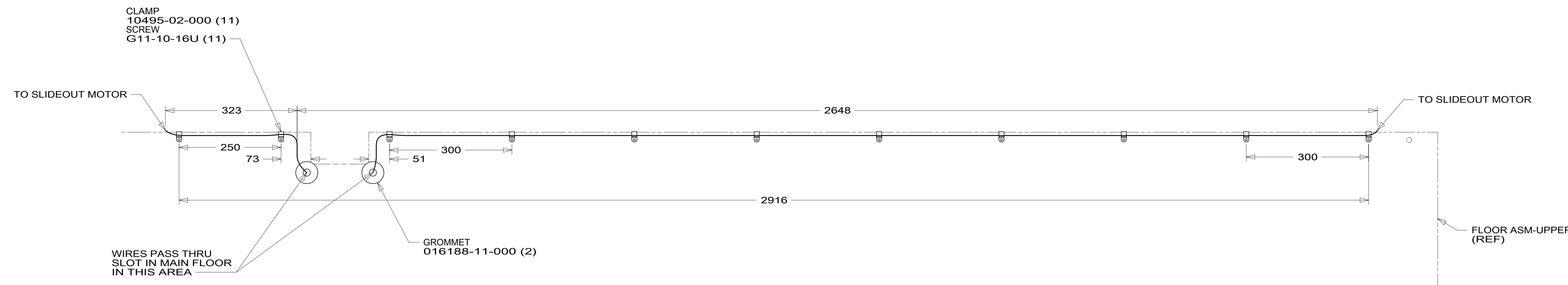
FIRST USED	<b>15 E26HE</b>	
TITLE:	<b>DO NOT SCALE DRAWING</b>	
	<b>WIRING INSTL-BODY, 12V</b>	
SHEET 6	PART NO <b>190517</b>	REV

\*190517\*

8 7 6 5 4 3 2 1

D

D



C

C

→

←

B

B

VIEW GA  
(FRONT LEFT)

A

A

265 CODES/STANDARDS-CSA/CMVSS

1B1 CODES/STANDARDS USA

1B1 265

FIRST USED  
**15 E26HE**

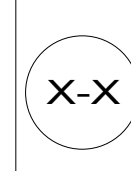
DO NOT SCALE DRAWING

TITLE:  
**WIRING INSTL-BODY, 12V**

SHEET 7 PART NO **190517** REV

FOR ELECTRICAL  
TORQUE  
SPECIFICATIONS  
SEE DWG NO.  
128783-01-000

FOR  
ELECTRICAL  
CALLOUTS  
SEE DWG NO.  
121339-01-000



8 7 6 5 4 3 2 1

↑

\*190517\*