



**DANGER**

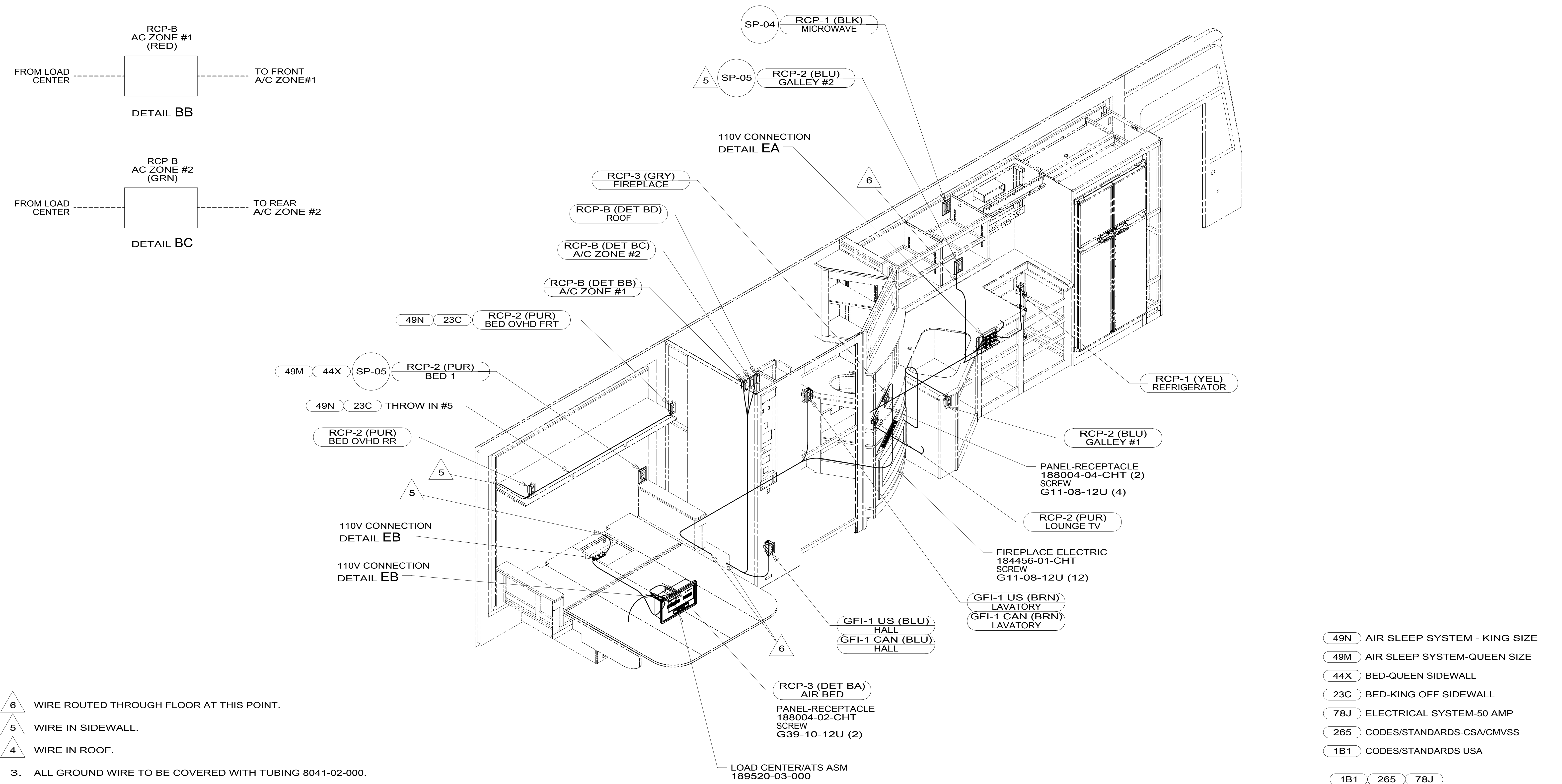
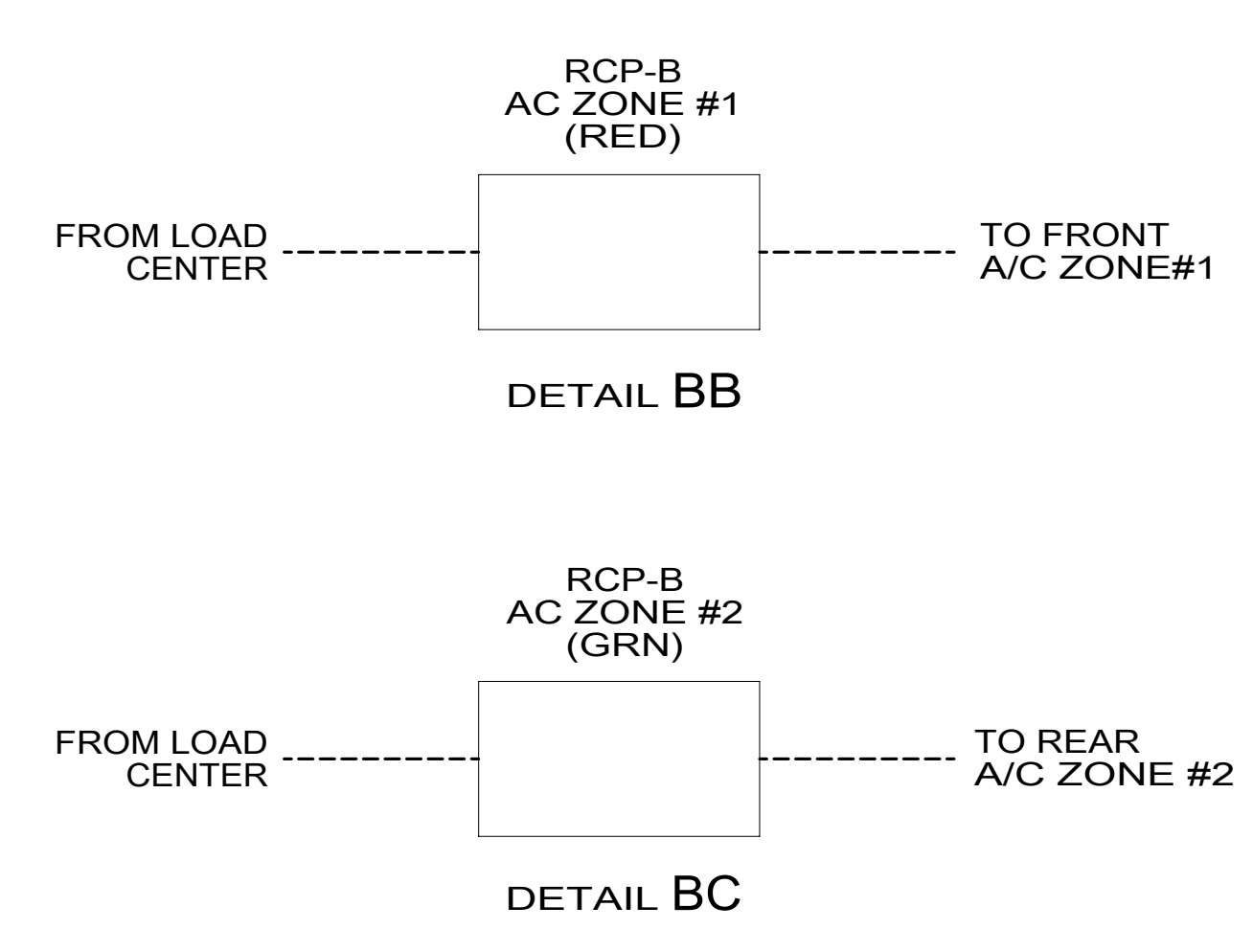
**Danger of electrical shock, burns or death.** Always remove all power sources before attempting any repair, service or diagnostic work. Power can be present from shore power, generator, inverter or battery. All power sources must be disabled and secured before performing any service.



**CAUTION**

If you lack the skills, tools or equipment to perform diagnostic or repair work leave such work to an authorized Winnebago Industries dealer or other qualified shop.





- 6 WIRE ROUTED THROUGH FLOOR AT THIS POINT.
- 5 WIRE IN SIDEWALL.
- 4 WIRE IN ROOF.

- 3. ALL GROUND WIRE TO BE COVERED WITH TUBING 8041-02-000.
- 2. ALL 110V WIRE TO BE CLAMPED WITH CLAMP 10497-05-000 WITHIN 200MM OF OUTLET BOXES, USE SCREW G67-10-12B.
- 1. ALL WIRES TO BE SECURED WITH CLAMP 10495-01-000 OR CLIP 80734-01-000 EVERY 600MM. USE SCREW G67-10-12B UNLESS OTHERWISE SPECIFIED.

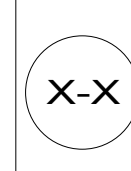
NOTES:

- 49N AIR SLEEP SYSTEM - KING SIZE
- 49M AIR SLEEP SYSTEM-QUEEN SIZE
- 44X BED-QUEEN SIDEWALL
- 23C BED-KING OFF SIDEWALL
- 78J ELECTRICAL SYSTEM-50 AMP
- 265 CODES/STANDARDS-CSA/CMVSS
- 1B1 CODES/STANDARDS USA

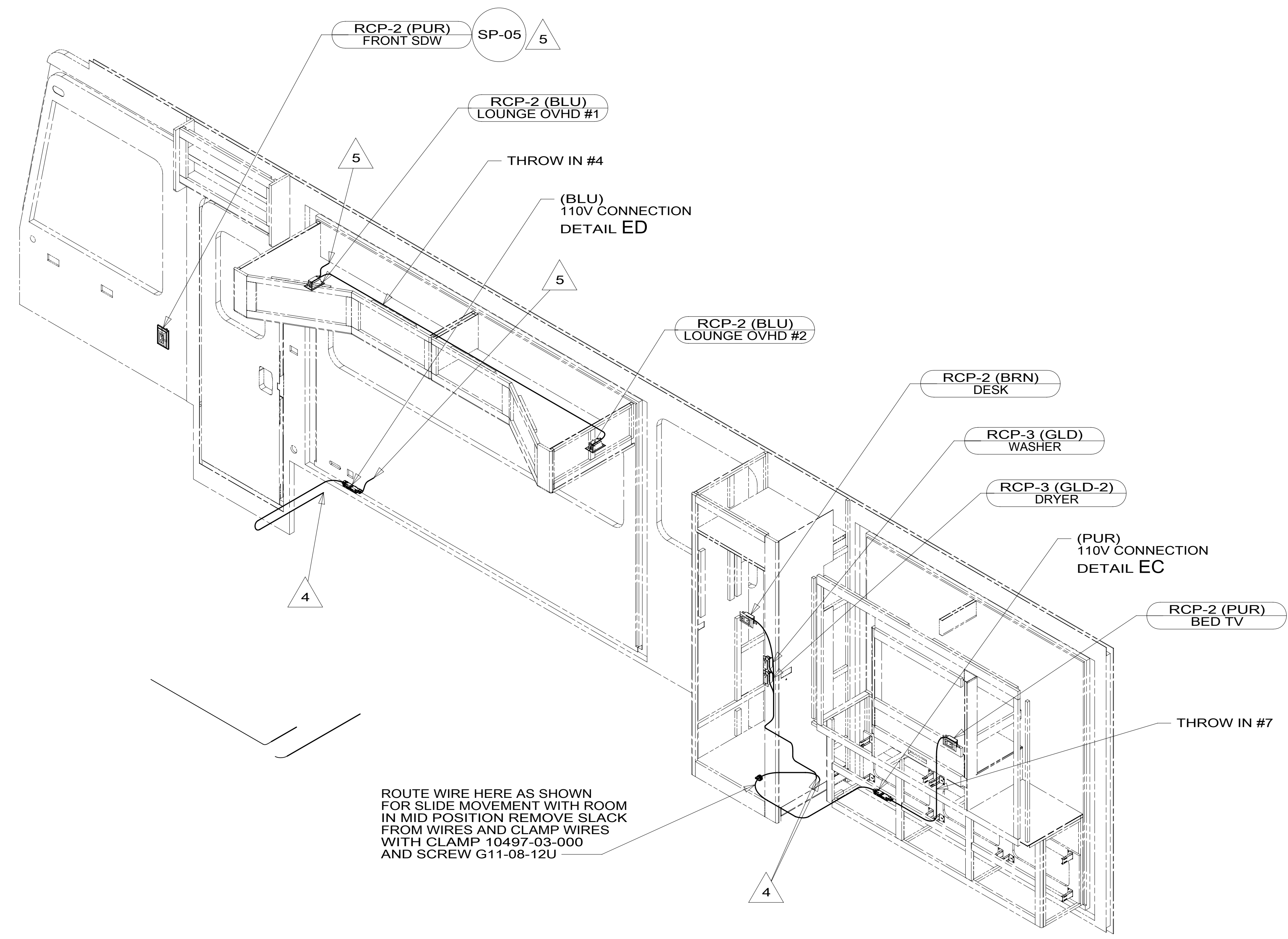
|                                       |                           |
|---------------------------------------|---------------------------|
| FIRST USED                            |                           |
| <b>15 J32D</b>                        |                           |
| DO NOT SCALE DRAWING                  |                           |
| TITLE: <b>WIRING INSTL-BODY, 110V</b> |                           |
| SHEET 2                               | PART NO <b>190408</b> REV |

FOR ELECTRICAL TORQUE SPECIFICATIONS SEE DWG NO. 128783-01-000

FOR ELECTRICAL CALLOUTS SEE DWG NO. 121339-01-000



\*190408\*



ROUTE WIRE HERE AS SHOWN FOR SLIDE MOVEMENT WITH ROOM IN MID POSITION REMOVE SLACK FROM WIRES AND CLAMP WIRES WITH CLAMP 10497-03-000 AND SCREW G11-08-12U

- 5 WIRE IN SIDEWALL.
- 4 WIRE ROUTED THROUGH FLOOR AT THIS POINT.
- 3. ALL GROUND WIRE TO BE COVERED WITH TUBING 8041-02-000.
- 2. ALL 110V WIRE TO BE CLAMPED WITH CLAMP 10497-05-000 WITHIN 200MM OF OUTLET BOXES, USE SCREW G67-10-12B.
- 1. ALL WIRES TO BE SECURED WITH CLAMP 10495-01-000 OR CLIP 80734-01-000 EVERY 600MM. USE SCREW G67-10-12B UNLESS OTHERWISE SPECIFIED.

NOTES:

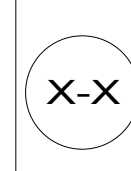
- 78J ELECTRICAL SYSTEM-50 AMP
- 265 CODES/STANDARDS-CSA/CMVSS
- 1B1 CODES/STANDARDS USA

1B1 265 78J

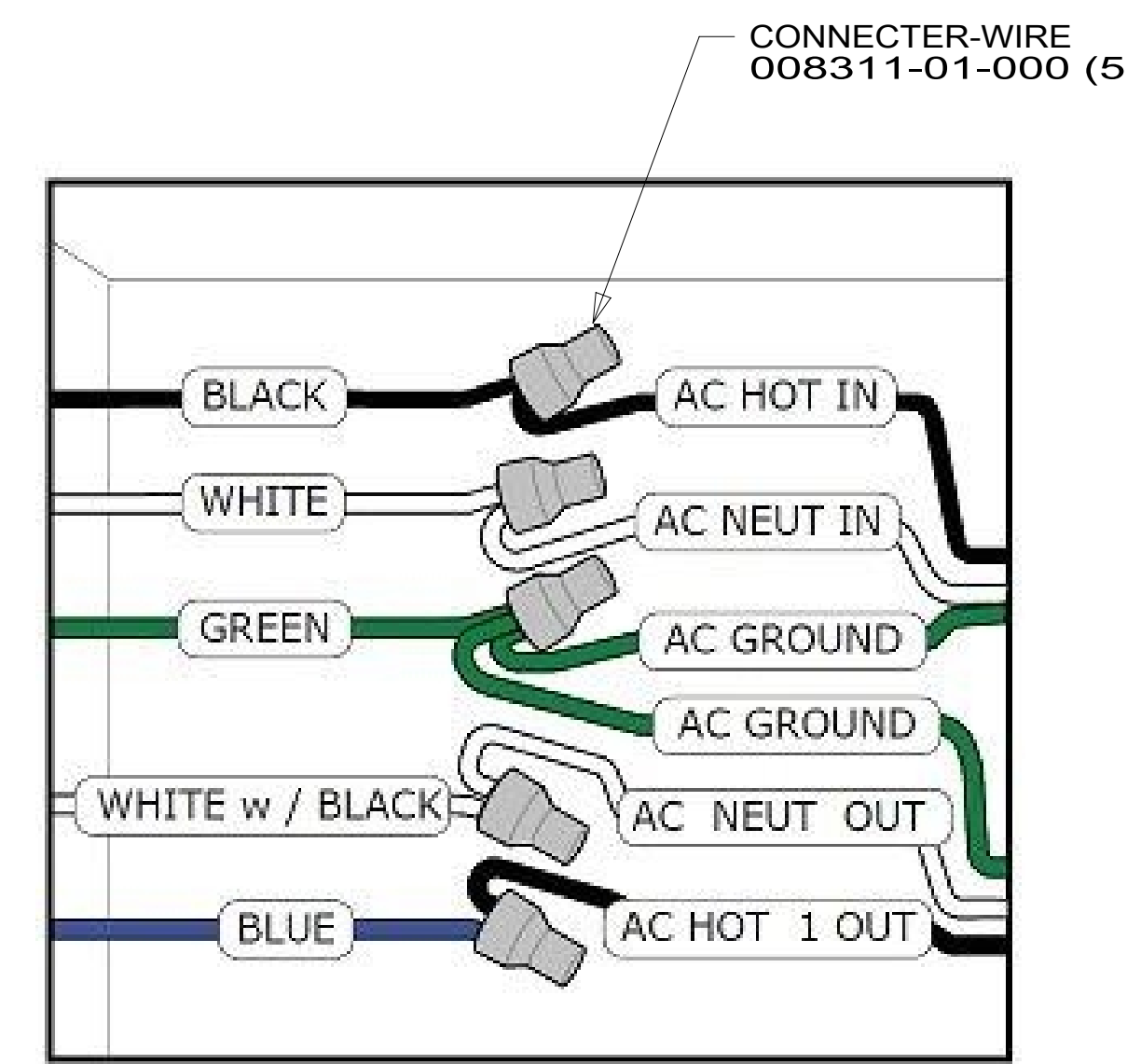
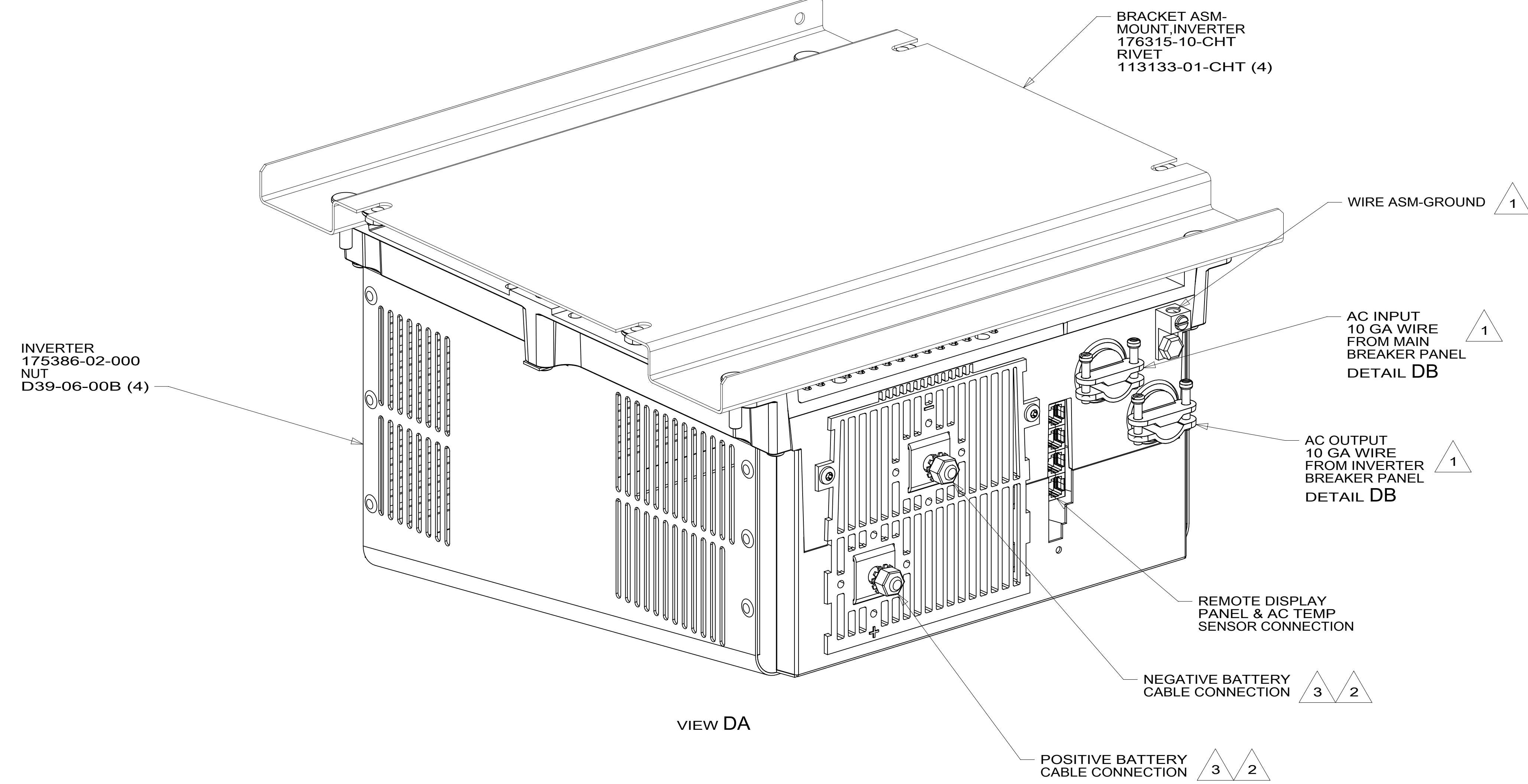
|                                       |                           |
|---------------------------------------|---------------------------|
| FIRST USED                            |                           |
| <b>15 J32D</b>                        |                           |
| DO NOT SCALE DRAWING                  |                           |
| TITLE: <b>WIRING INSTL-BODY, 110V</b> |                           |
| SHEET 3                               | PART NO <b>190408</b> REV |

FOR ELECTRICAL TORQUE SPECIFICATIONS SEE DWG NO. 128783-01-000

FOR ELECTRICAL CALLOUTS SEE DWG NO. 121339-01-000



\*190408\*



- NOTES:
- 3 SEE WIRING INSTL-CHASSIS FOR ADDITIONAL INFORMATION.
  - 2 DO NOT USE POWER/AIR TOOL TO INSTALL NUT. TORQUE TO 10-12 FT LBS.
  - 1 SEE LOAD CENTER/ATS ASM FOR ADDITIONAL INFORMATION.

FOR ELECTRICAL  
TORQUE  
SPECIFICATIONS  
SEE DWG NO.  
128783-01-000

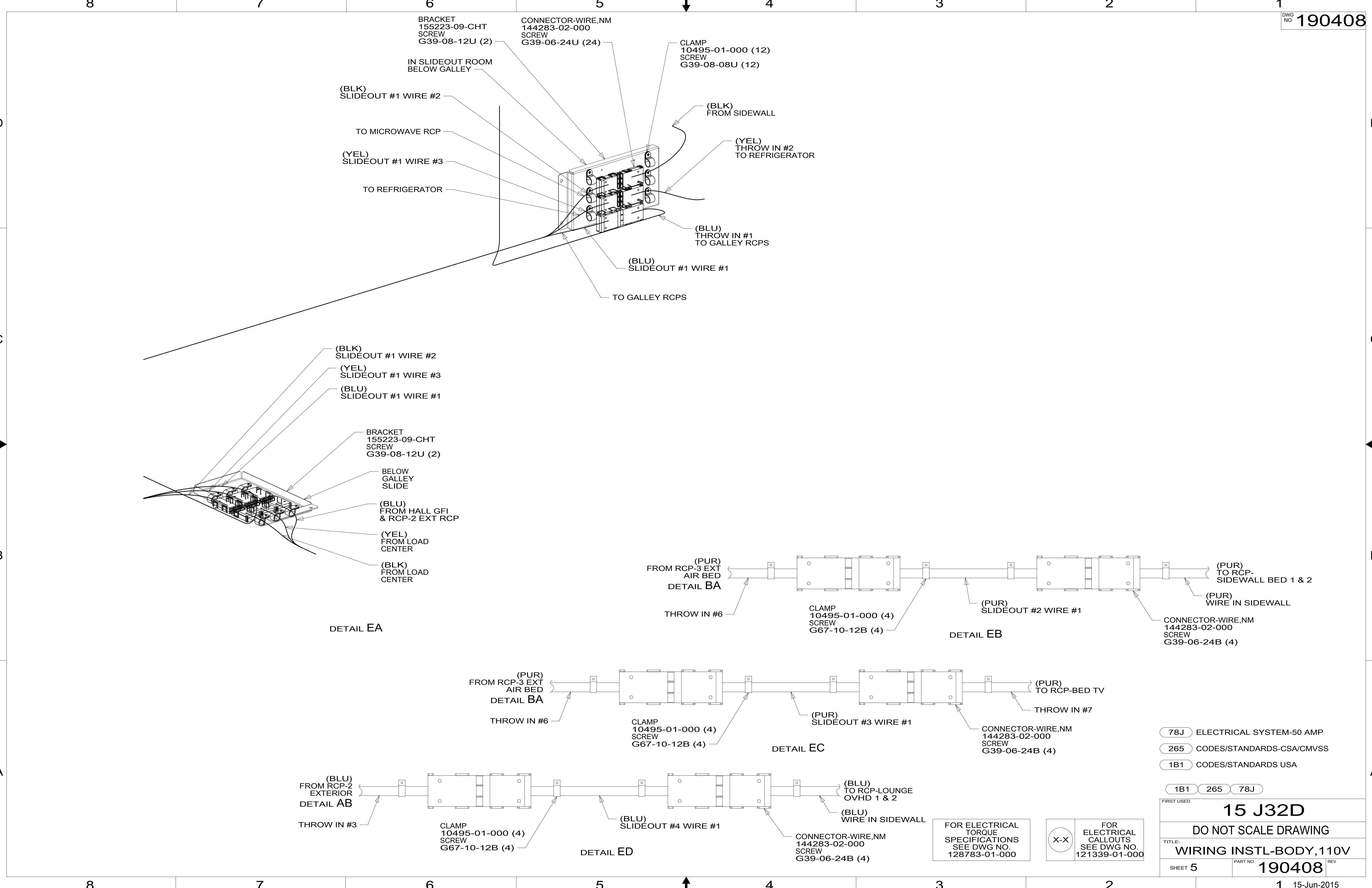
FOR  
ELECTRICAL  
CALLOUTS  
SEE DWG NO.  
121339-01-000

- 78J ELECTRICAL SYSTEM-50 AMP
- 265 CODES/STANDARDS-CSA/CMVSS
- 1B1 CODES/STANDARDS USA

1B1 265 78J

|                                       |                           |
|---------------------------------------|---------------------------|
| FIRST USED                            |                           |
| <b>15 J32D</b>                        |                           |
| DO NOT SCALE DRAWING                  |                           |
| TITLE: <b>WIRING INSTL-BODY, 110V</b> |                           |
| SHEET 4                               | PART NO <b>190408</b> REV |

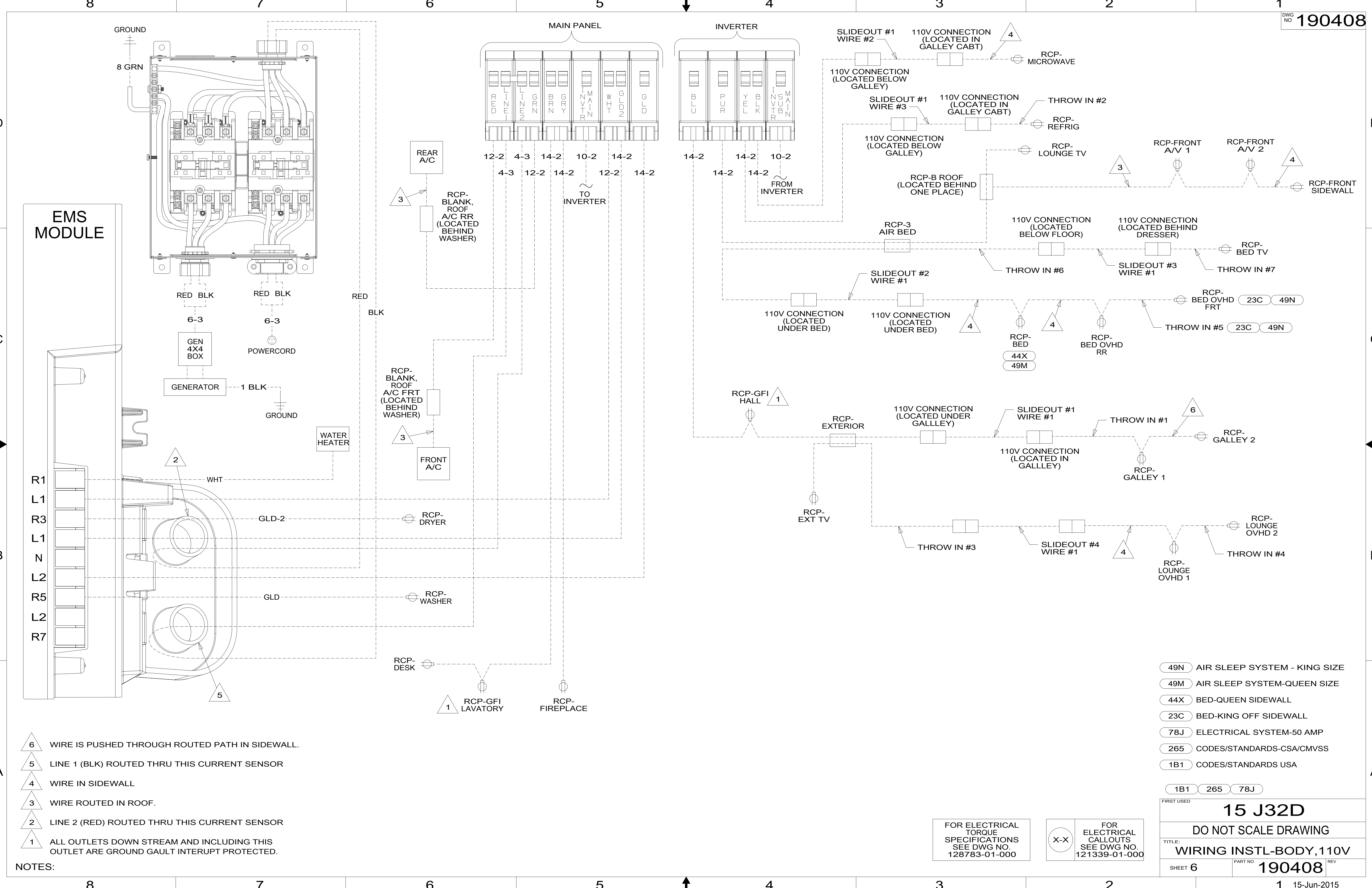
\* 190408 \*



78J ELECTRICAL SYSTEM-50 AMP  
 265 CODES/STANDARDS-CSA/CMVSS  
 1B1 CODES/STANDARDS USA

|                                       |                           |
|---------------------------------------|---------------------------|
| FIRST USED                            |                           |
| <b>15 J32D</b>                        |                           |
| DO NOT SCALE DRAWING                  |                           |
| TITLE: <b>WIRING INSTL-BODY, 110V</b> |                           |
| SHEET 5                               | PART NO <b>190408</b> REV |
| 1 15-Jun-2015                         |                           |

\* 190408 \*



EMS  
MODULE

R1  
L1  
R3  
L1  
N  
L2  
R5  
L2  
R7

- NOTES:
- 6 WIRE IS PUSHED THROUGH ROUTED PATH IN SIDEWALL.
  - 5 LINE 1 (BLK) ROUTED THRU THIS CURRENT SENSOR
  - 4 WIRE IN SIDEWALL
  - 3 WIRE ROUTED IN ROOF.
  - 2 LINE 2 (RED) ROUTED THRU THIS CURRENT SENSOR
  - 1 ALL OUTLETS DOWN STREAM AND INCLUDING THIS OUTLET ARE GROUND GAULT INTERRUPT PROTECTED.

- 49N AIR SLEEP SYSTEM - KING SIZE
- 49M AIR SLEEP SYSTEM-QUEEN SIZE
- 44X BED-QUEEN SIDEWALL
- 23C BED-KING OFF SIDEWALL
- 78J ELECTRICAL SYSTEM-50 AMP
- 265 CODES/STANDARDS-CSA/CMVSS
- 1B1 CODES/STANDARDS USA

|                                       |               |             |
|---------------------------------------|---------------|-------------|
| 1B1                                   | 265           | 78J         |
| FIRST USED                            |               |             |
| <b>15 J32D</b>                        |               |             |
| DO NOT SCALE DRAWING                  |               |             |
| TITLE: <b>WIRING INSTL-BODY, 110V</b> |               |             |
| SHEET 6                               | PART NO       | REV         |
|                                       | <b>190408</b> |             |
|                                       |               | 15-Jun-2015 |

FOR ELECTRICAL TORQUE SPECIFICATIONS SEE DWG NO. 128783-01-000

FOR ELECTRICAL CALLOUTS SEE DWG NO. 121339-01-000

\* 190408 A \*