



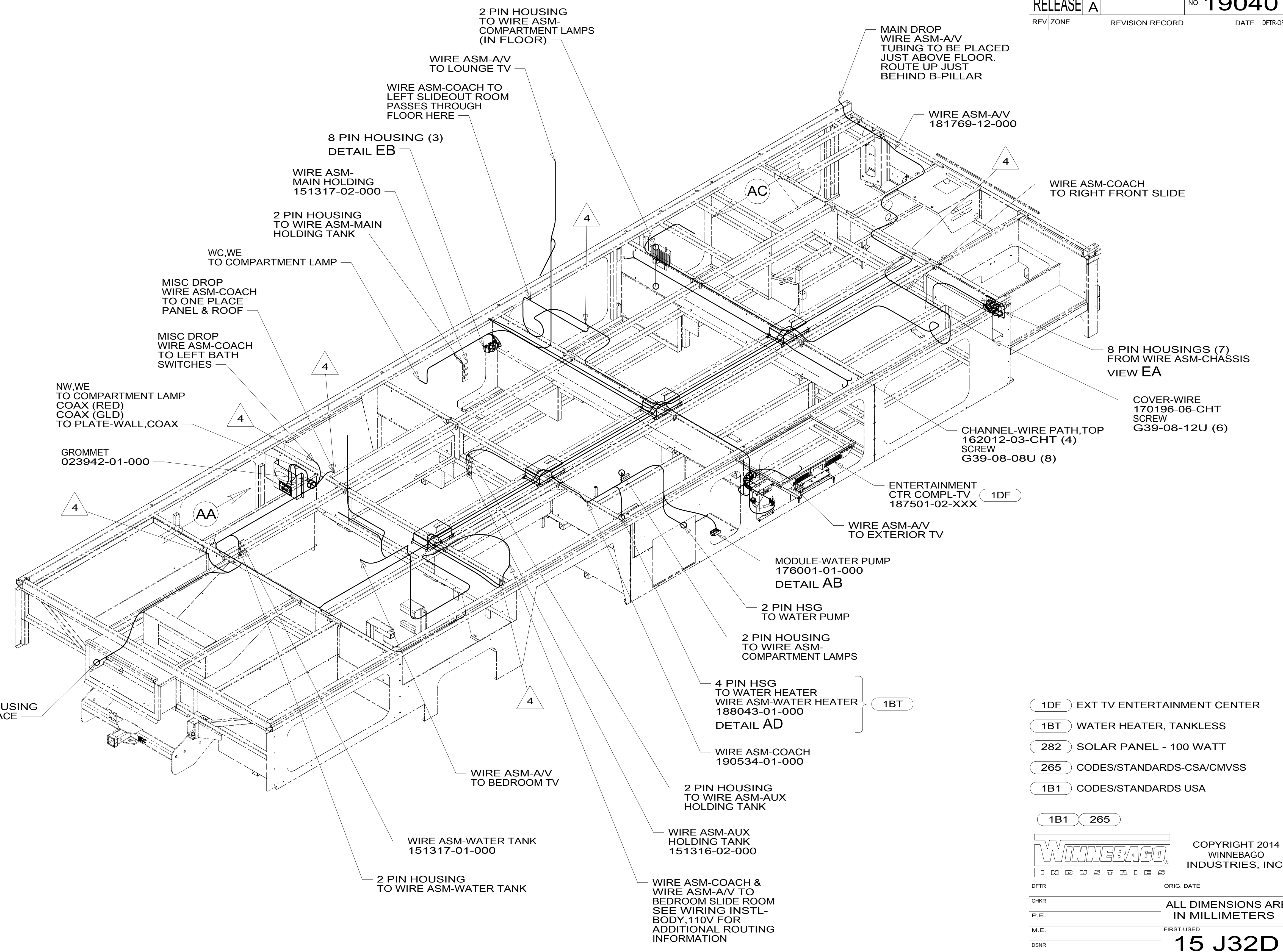
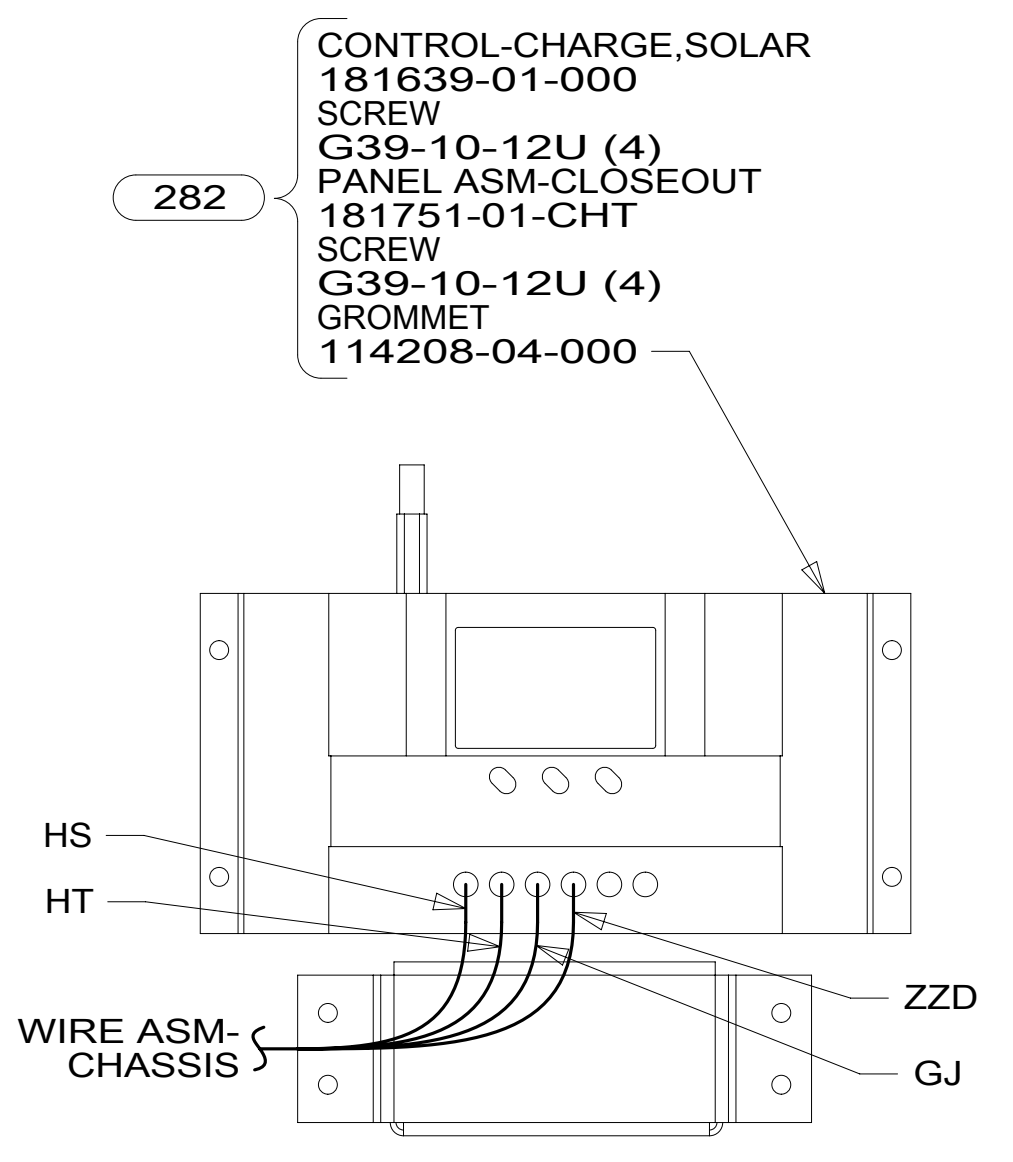
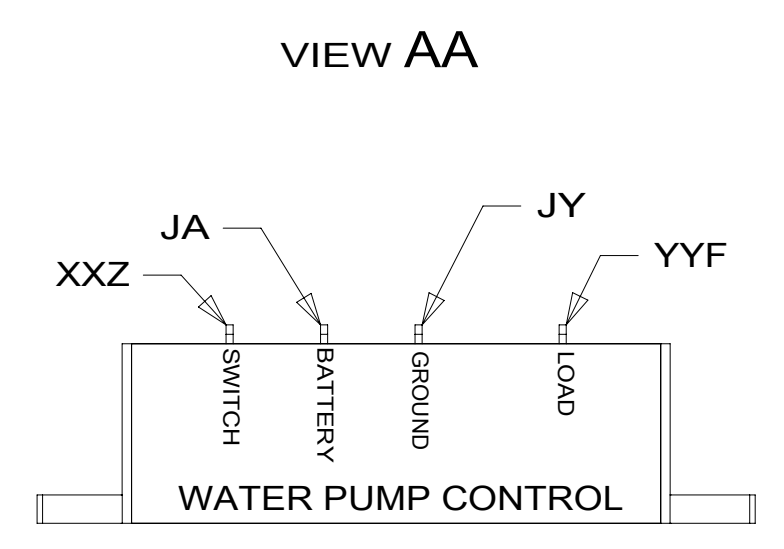
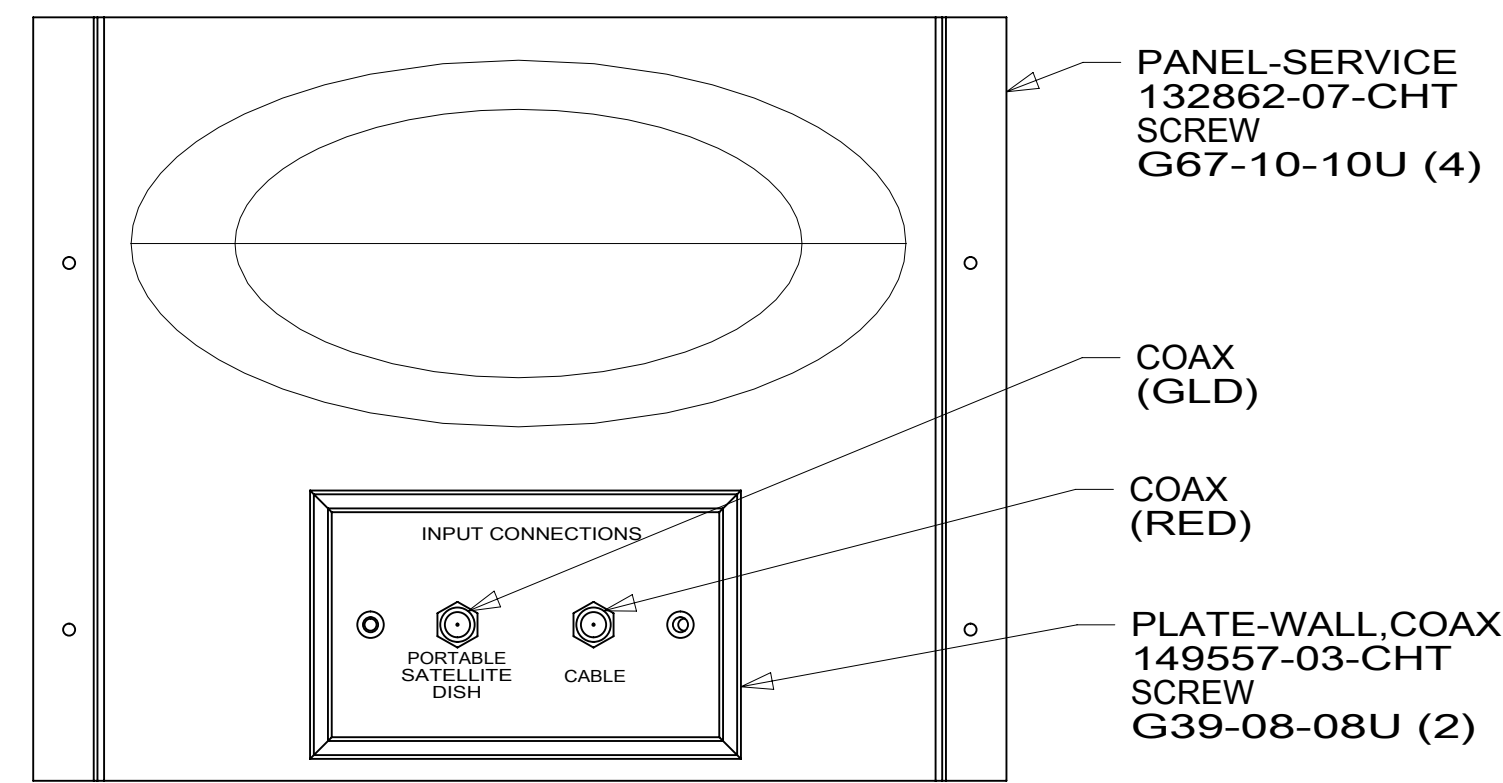
**DANGER**

**Danger of electrical shock, burns or death.** Always remove all power sources before attempting any repair, service or diagnostic work. Power can be present from shore power, generator, inverter or battery. All power sources must be disabled and secured before performing any service.

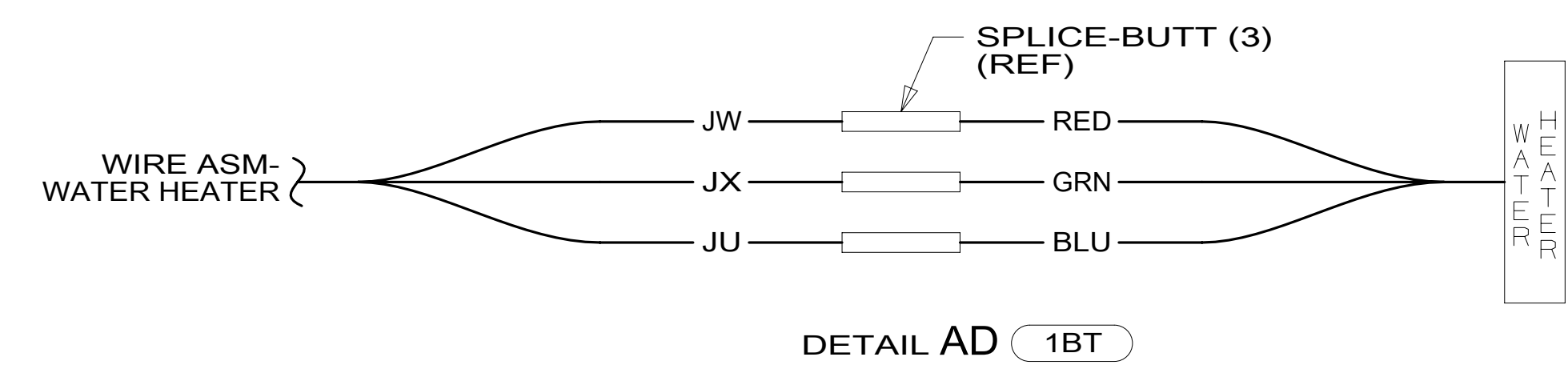


**CAUTION**

If you lack the skills, tools or equipment to perform diagnostic or repair work leave such work to an authorized Winnebago Industries dealer or other qualified shop.



- 4 WIRE PASSES THROUGH FLOOR AT THIS POINT.
3. ROUTE TANK SENSOR WIRES SO THEY DO NOT PASS OVER SENSORS. USE WIRE TIE MOUNT 155366-01-000 AND WIRE TIE 8343-01-000 AS NEEDED. TANK SURFACE MUST BE CLEANED USING ISOPROPYL ALCOHOL AND PRIME WITH PRIMER 94.
2. SEE WIRING DIAGRAM-BODY, 12V FOR ADDITIONAL INFORMATION.
1. ALL WIRES TO BE CLAMPED WITH CLAMP 10495-01-000 OR WIRE TIE 8343-02-000 EVERY 600MM UNLESS OTHERWISE SPECIFIED.



FOR ELECTRICAL TORQUE SPECIFICATIONS SEE DWG NO. 128783-01-000

FOR ELECTRICAL CALLOUTS SEE DWG NO. 121339-01-000

- 1DF EXT TV ENTERTAINMENT CENTER
- 1BT WATER HEATER, TANKLESS
- 282 SOLAR PANEL - 100 WATT
- 265 CODES/STANDARDS-CSA/CMVSS
- 1B1 CODES/STANDARDS USA

WINNEBAGO COPYRIGHT 2014 WINNEBAGO INDUSTRIES, INC.

DFTR	ORIG. DATE
CHKR	ALL DIMENSIONS ARE IN MILLIMETERS
P.E.	FIRST USED
M.E.	15 J32D
DSNR	

UNSPECIFIED TOLERANCES ARE:  
 WHOLE DIM (X) : 3  
 ONE-PLACE (X.X) : 1.5  
 TWO-PLACE (X.XX) : 0.50  
 ANGLE : 1'

THIRD ANGLE PROJECTION

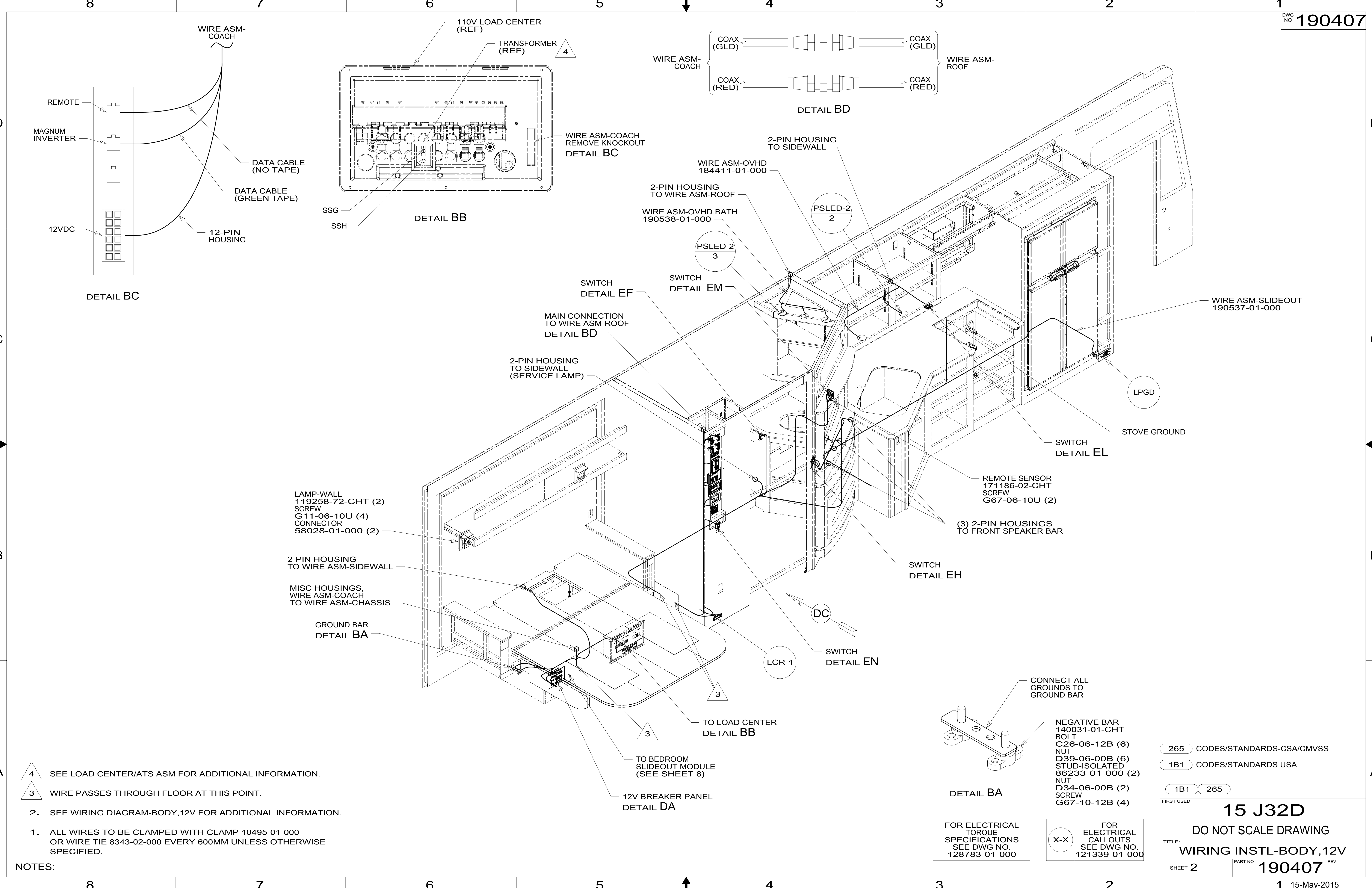
DO NOT SCALE DRAWING REFER TO ES0018 FOR FASTENER TIGHTENING GUIDELINES

TITLE: WIRING INSTL-BODY, 12V

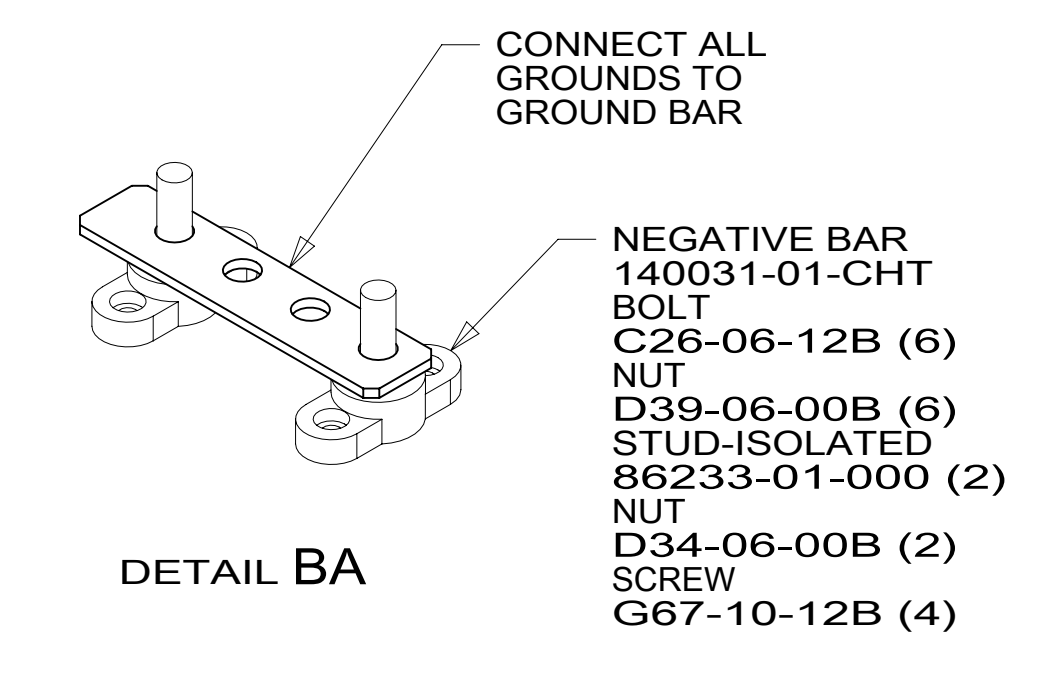
SHEET 1 OF 8 PART NO 190407 REV

REF: 1 15-May-2015

\*190407



- NOTES:
- 4 SEE LOAD CENTER/ATS ASM FOR ADDITIONAL INFORMATION.
  - 3 WIRE PASSES THROUGH FLOOR AT THIS POINT.
  - 2. SEE WIRING DIAGRAM-BODY, 12V FOR ADDITIONAL INFORMATION.
  - 1. ALL WIRES TO BE CLAMPED WITH CLAMP 10495-01-000 OR WIRE TIE 8343-02-000 EVERY 600MM UNLESS OTHERWISE SPECIFIED.

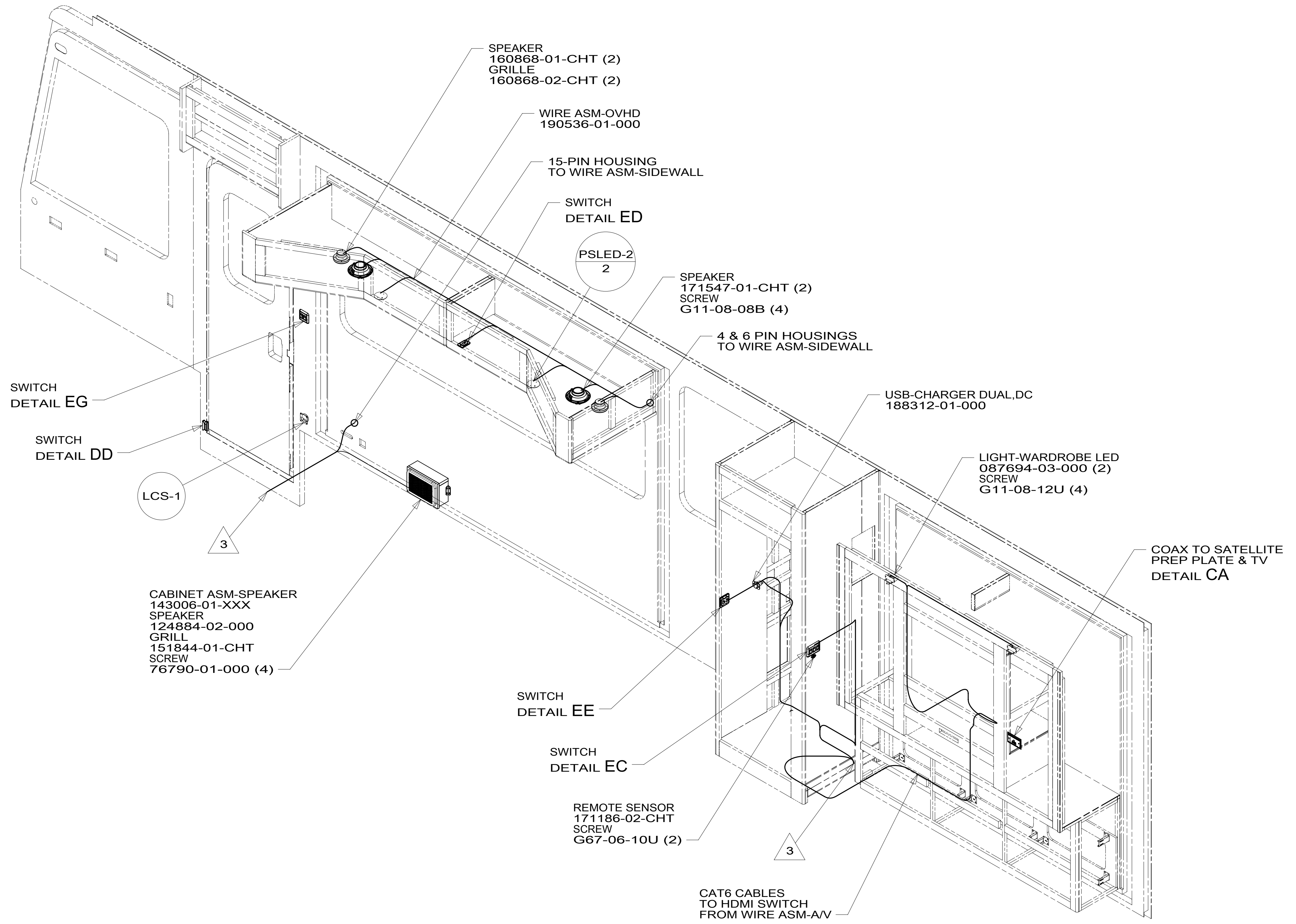


FOR ELECTRICAL TORQUE SPECIFICATIONS SEE DWG NO. 128783-01-000

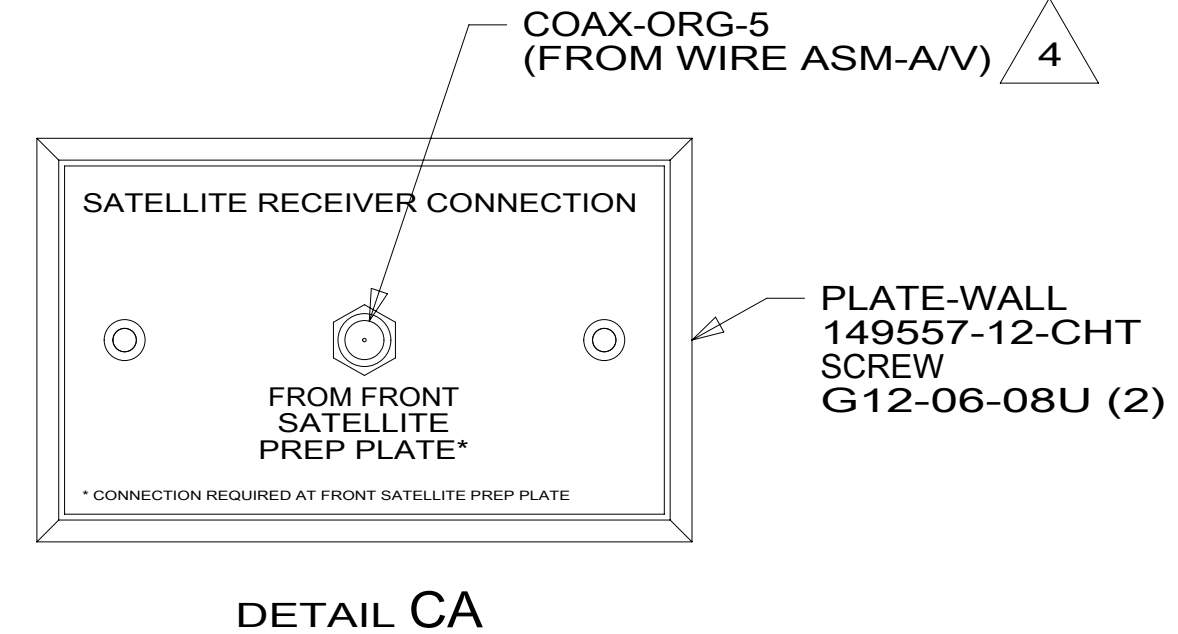
FOR ELECTRICAL CALLOUTS SEE DWG NO. 121339-01-000

265	CODES/STANDARDS-CSA/CMVSS
1B1	CODES/STANDARDS USA
1B1	265
FIRST USED	
<b>15 J32D</b>	
<b>DO NOT SCALE DRAWING</b>	
TITLE: <b>WIRING INSTL-BODY, 12V</b>	
SHEET 2	PART NO <b>190407</b> REV
1 15-May-2015	

\*190407



- NOTES:
- 4 CONNECTS TO REAR OF SATELLITE PREP PLATE.
  - 3 WIRE PASSES THROUGH FLOOR AT THIS POINT.
  - 2. SEE WIRING DIAGRAM-BODY, 12V FOR ADDITIONAL INFORMATION.
  - 1. ALL WIRES TO BE CLAMPED WITH CLAMP 10495-01-000 OR WIRE TIE 8343-02-000 EVERY 600MM UNLESS OTHERWISE SPECIFIED.



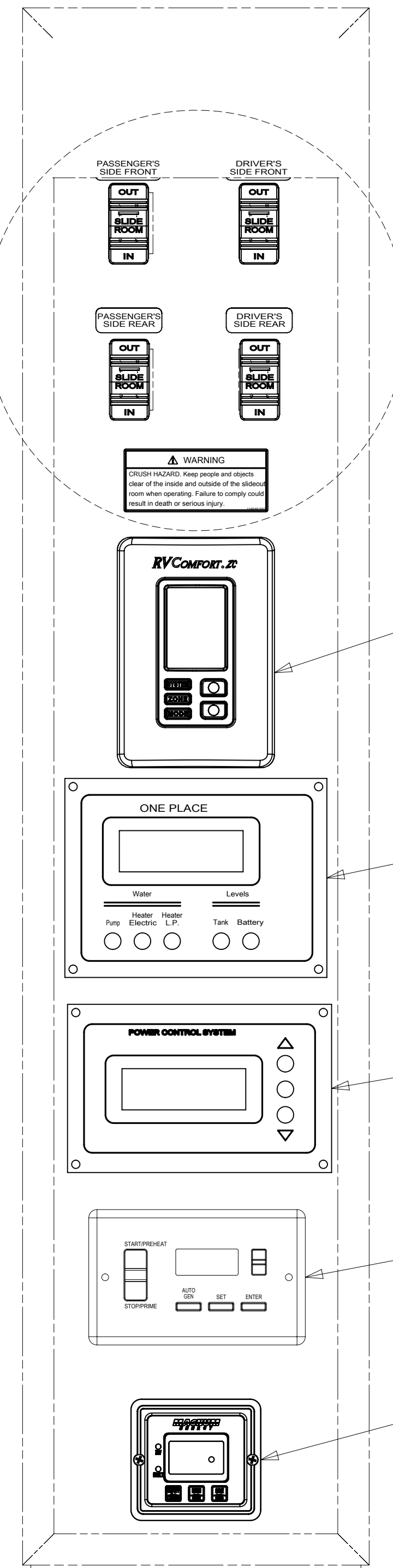
FOR ELECTRICAL TORQUE SPECIFICATIONS SEE DWG NO. 128783-01-000

FOR ELECTRICAL CALLOUTS SEE DWG NO. 121339-01-000

- 265 CODES/STANDARDS-CSA/CMVSS
- 1B1 CODES/STANDARDS USA
- 1B1 265

FIRST USED	
<b>15 J32D</b>	
DO NOT SCALE DRAWING	
TITLE: <b>WIRING INSTL-BODY, 12V</b>	
SHEET 3	PART NO <b>190407</b> REV
1 15-May-2015	

\*190407\*



SLIDEOUT SWITCHES  
DETAIL EJ

THERMOSTAT  
171186-05-CHT  
SCREW  
G13-07-12B (2)  
RELAY  
63912-02-000 (2)

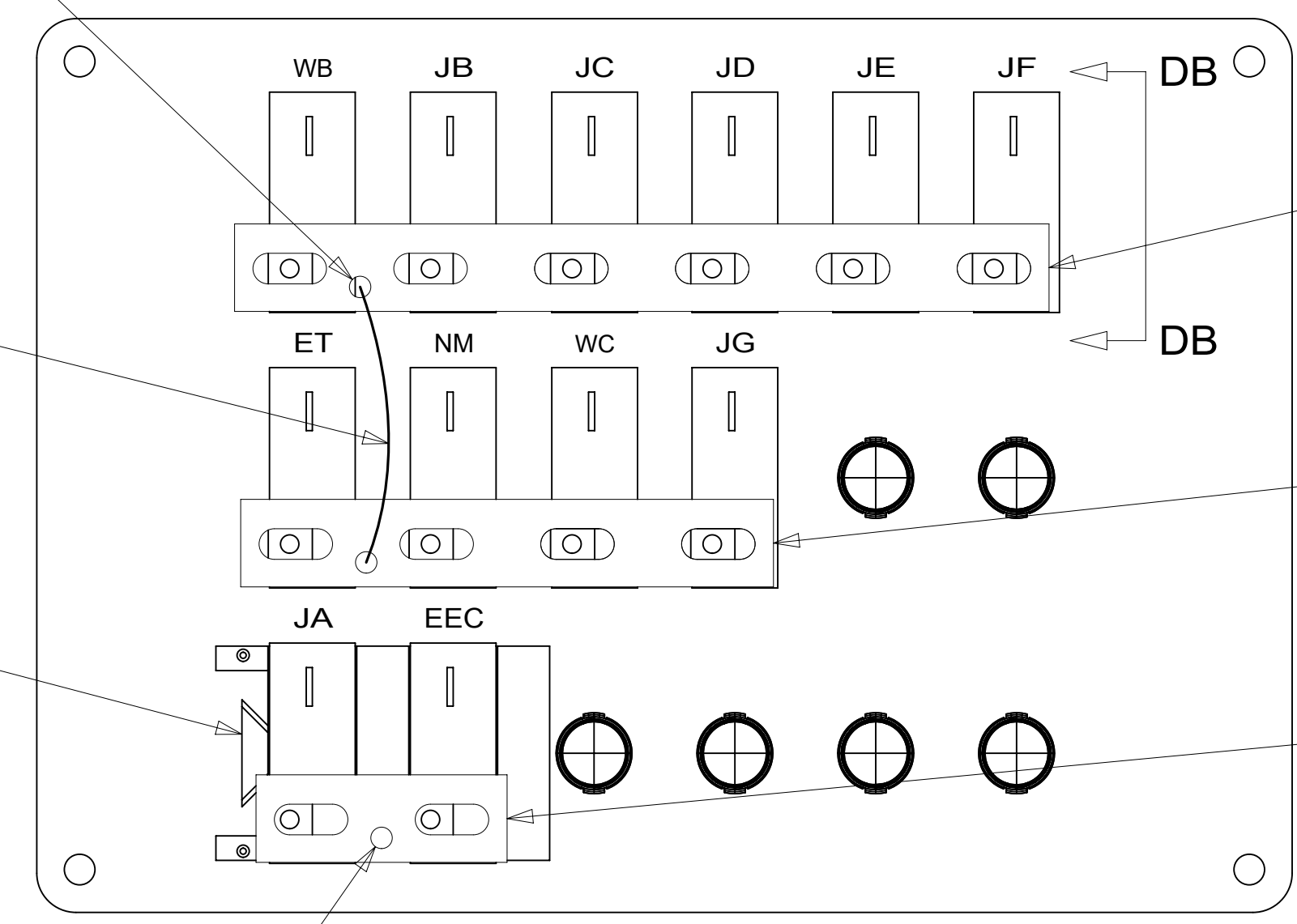
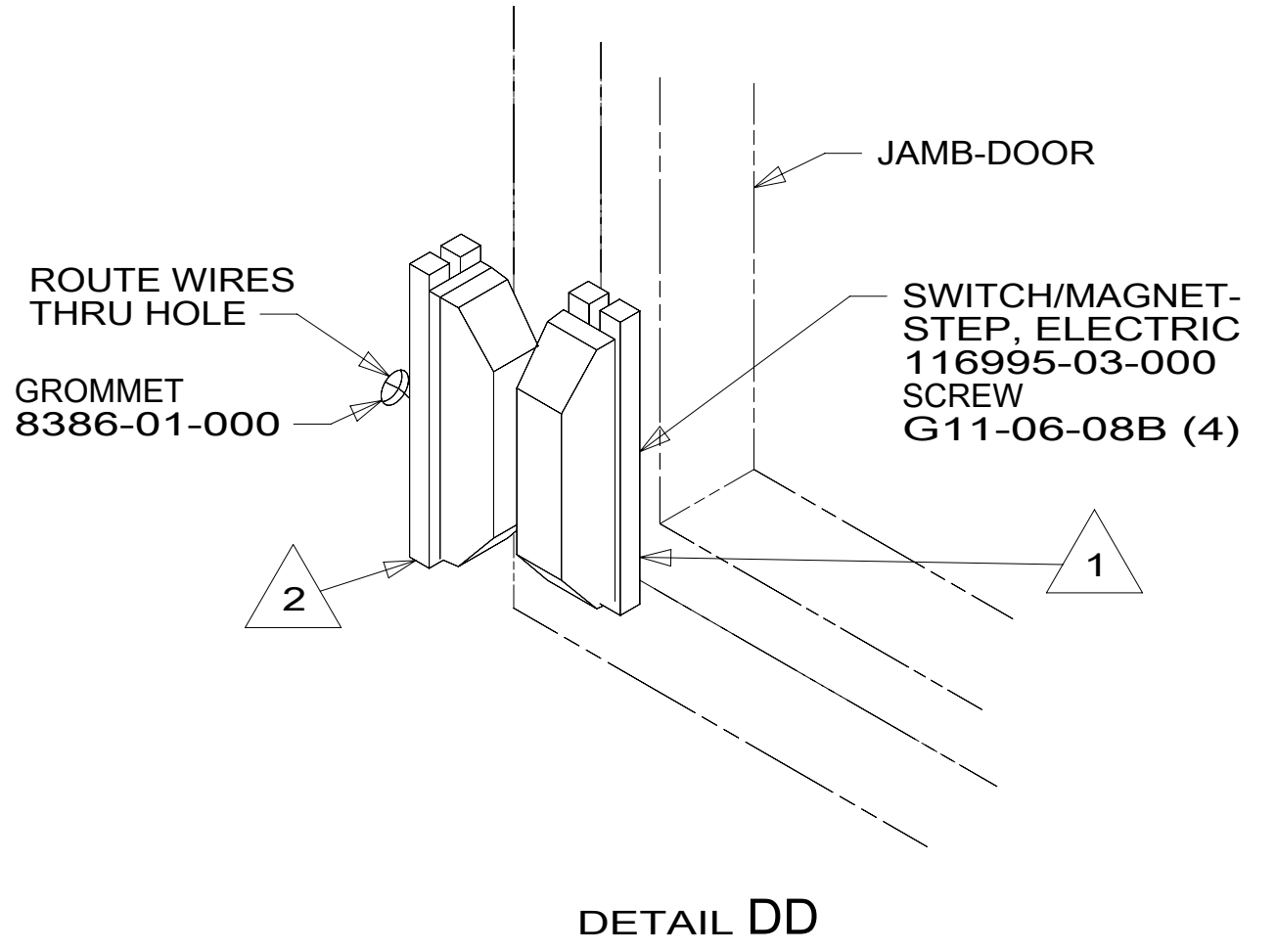
PANEL-MONITOR,LCD  
175724-02-000  
175724-05-000  
SCREW  
G11-08-08U (4)

PANEL-MONITOR,  
PCS 50 AMP  
174384-06-000  
SCREW  
G11-08-08U (4)

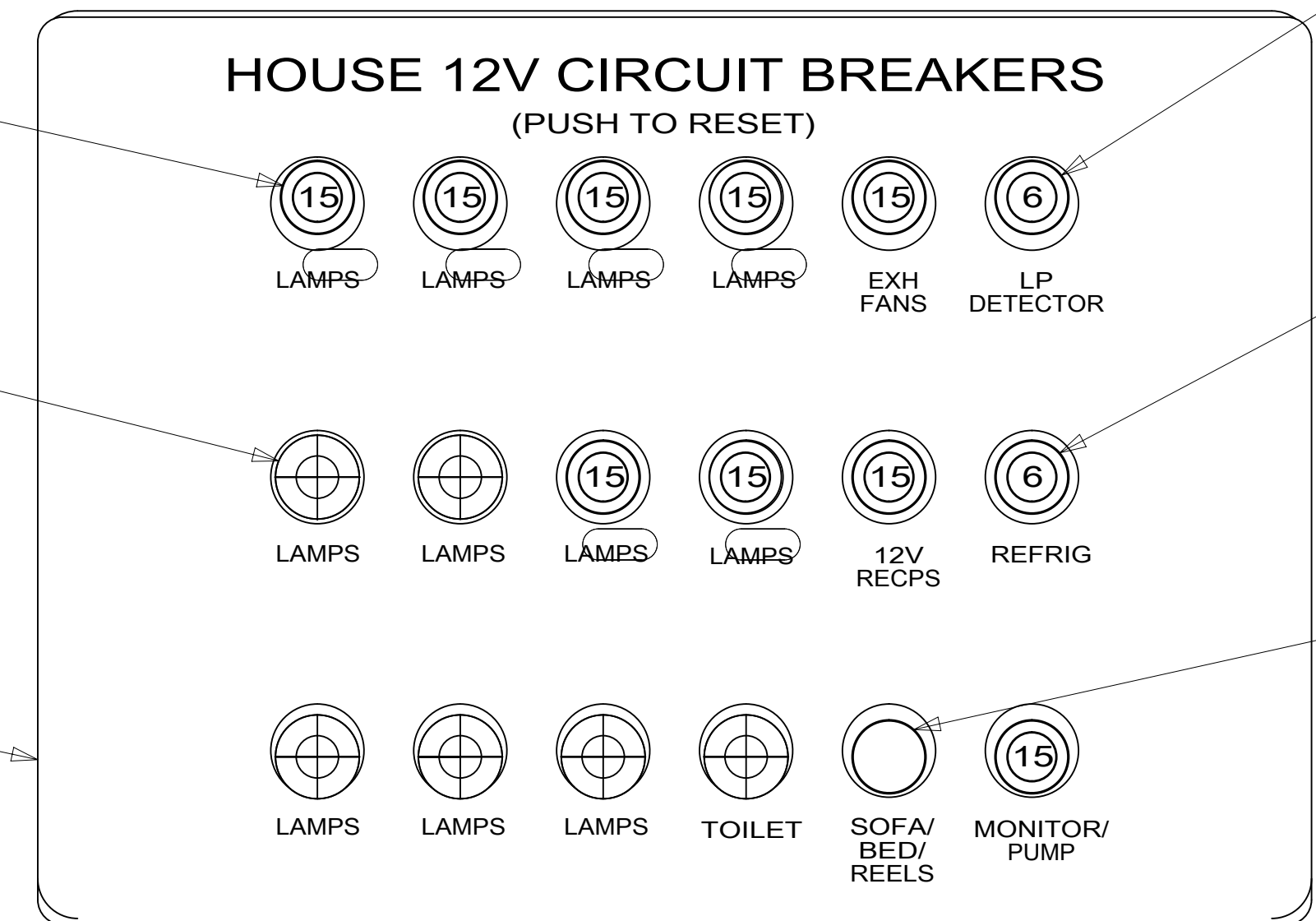
MODULE-AUTO  
GENERATOR START  
158425-01-000

REMOTE PANEL-  
INVERTER  
175385-02-000  
SCREW  
G11-08-08U (2)

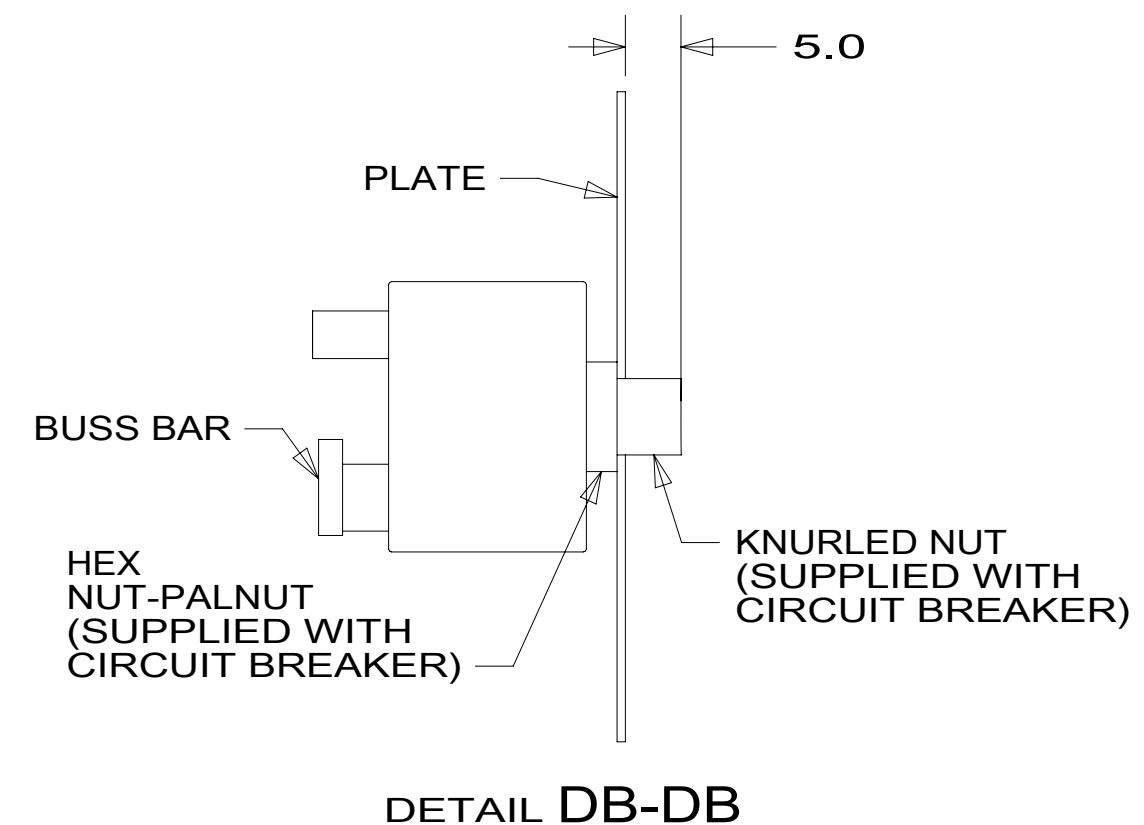
- NOTES:
- 4 SET 'BAT TYPE' TO 'AGM2'  
SET 'LBCO' TO '11VDC'  
SET 'BAT AHRS' TO '200 AH' WITH 79W  
SET 'BAT AHRS' TO '400 AH' WITH 15L  
SEE OPERATORS MANUAL FOR SETUP PROCEDURE.
  - 3 SET 'GEN TYPE' TO 'GAS/LP'  
SET 'SAFE TYPE' TO 'IGNITION'  
SET 'SP SENSE' TO 'AFTER'  
SEE OPERATORS MANUAL FOR SETUP PROCEDURE.
  - 2 MOUNT SWITCH AND SPACER TO BLOCK ON JAMB  
ADJUST HEIGHT TO MATCH MAGNET.
  - 1 MOUNT MAGNET USING PILOT HOLES IN SCREEN  
DOOR FRAME. MOUNT WITH MAGNET TOWARD SWITCH.



- J 6 BLK FROM WIRE ASM-CHASSIS SCREW G39-08-06B
- M 6 BLK FROM WIRE ASM-COACH SCREW G39-08-06B
- SPACER 141789-01-000 (2)
- K 8 BLK FROM WIRE ASM-CHASSIS SCREW G39-08-06B
- BUSS BAR 141744-05-000 SCREW G39-08-06B
- BUSS BAR 141744-03-000 SCREW G39-08-06B
- BUSS BAR 141744-01-000 SCREW G39-08-06B



- CIRCUIT BREAKER 93654-02-000 (9) (15 AMP) SCREW G52-06-04B (9) WASHER OME02B-04-071(9)
- CIRCUIT BREAKER 93654-01-000 (6 AMP) SCREW G52-06-04B WASHER OME02B-04-071
- CIRCUIT BREAKER 93654-01-000 (6 AMP) SCREW G52-06-04B WASHER OME02B-04-071 PLUG 81211-06-000
- CIRCUIT BREAKER 182283-01-000 (20 AMP) SCREW G52-06-04B WASHER OME02B-04-071



FOR ELECTRICAL TORQUE SPECIFICATIONS SEE DWG NO. 128783-01-000

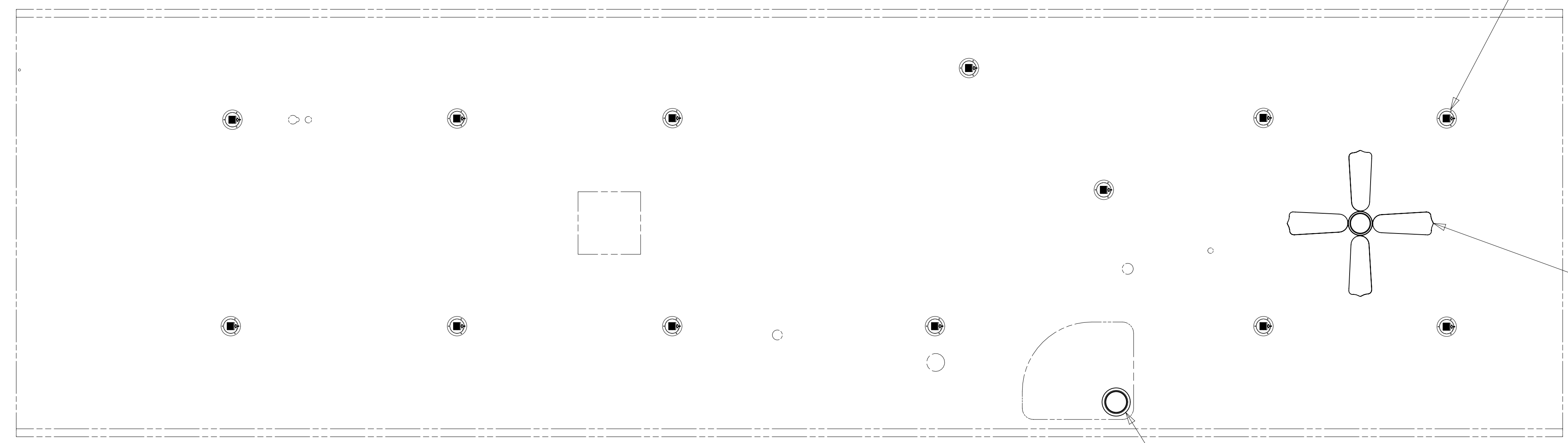
X-X FOR ELECTRICAL CALLOUTS SEE DWG NO. 121339-01-000

- 79W REFRIGERATOR-4 DOOR
- 15L RESIDENTIAL REFRIGERATOR PKG
- 1B2 WTR HTR-10GAL/ELEC/LP/MTRAIID
- 1BT WATER HEATER, TANKLESS
- 79W REFRIGERATOR-4 DOOR
- 15L RESIDENTIAL REFRIGERATOR PKG
- 265 CODES/STANDARDS-CSA/CMVSS
- 1B1 CODES/STANDARDS USA

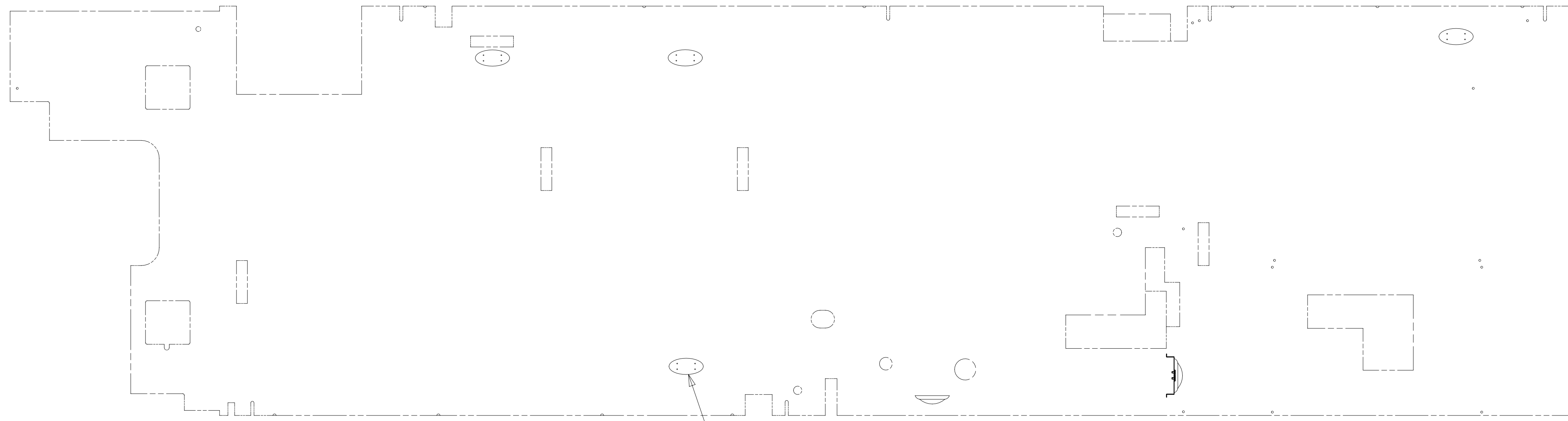
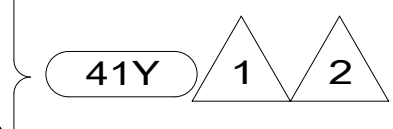
FIRST USED	
<b>15 J32D</b>	
DO NOT SCALE DRAWING	
TITLE: <b>WIRING INSTL-BODY, 12V</b>	
SHEET 4	PART NO <b>190407</b> REV
1 15-May-2015	

\* 190407

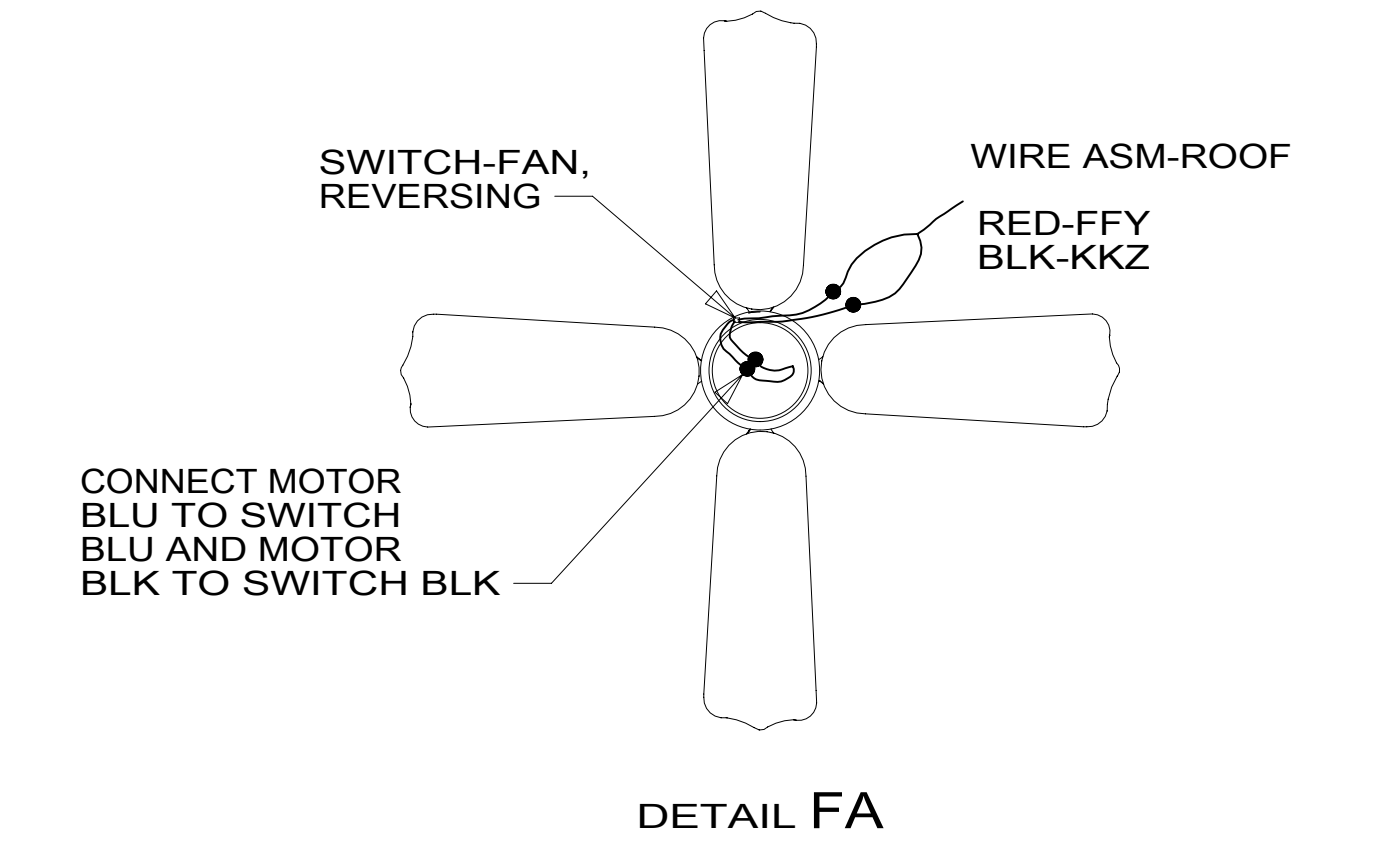




FAN-CEILING  
 139134-01-CHT  
 SCREW  
 G11-10-16B (3)  
 CONNECTOR  
 58028-01-000 (2)  
 DETAIL FA



LO1-3  
 6  
 WASHER-PLASTIC  
 180671-02-CHT (4)  
 SCREW  
 G11-08-08U (4)



DETAIL FA

- NOTES:
- 2 CENTER FAN OVER 25MM HOLE IN ROOF.
  - 1 APPLY LOCTITE P/N 62917-06-000 TO FAN BLADE MOUNTING NUT THREADS.

FOR ELECTRICAL TORQUE SPECIFICATIONS SEE DWG NO. 128783-01-000

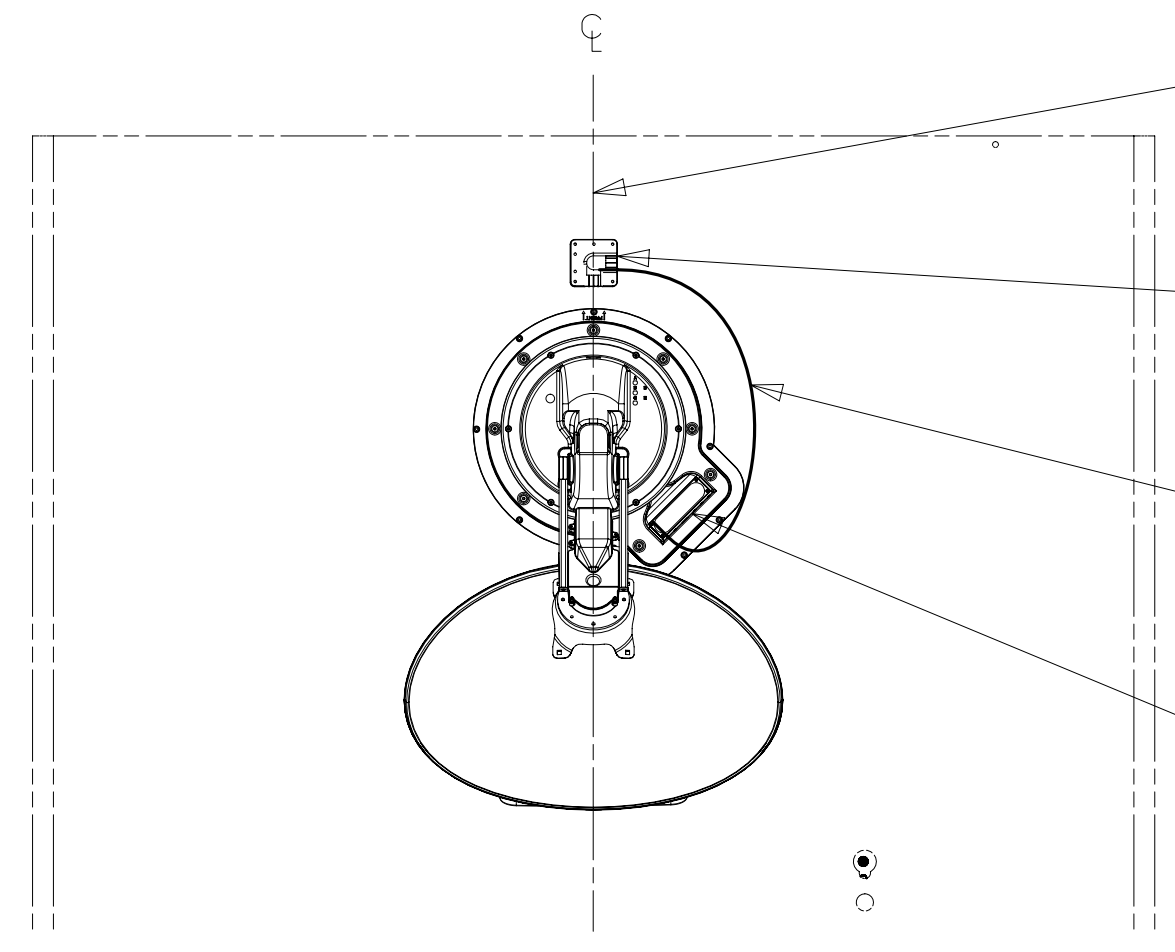
FOR ELECTRICAL CALLOUTS SEE DWG NO. 121339-01-000

- 41Y FAN - CEILING\_BEDROOM
- 265 CODES/STANDARDS-CSA/CMVSS
- 1B1 CODES/STANDARDS USA

1B1 265

FIRST USED	<b>15 J32D</b>	
TITLE:	DO NOT SCALE DRAWING	
	<b>WIRING INSTL-BODY, 12V</b>	
SHEET 6	PART NO <b>190407</b>	REV
	1	15-May-2015

\*190407\*



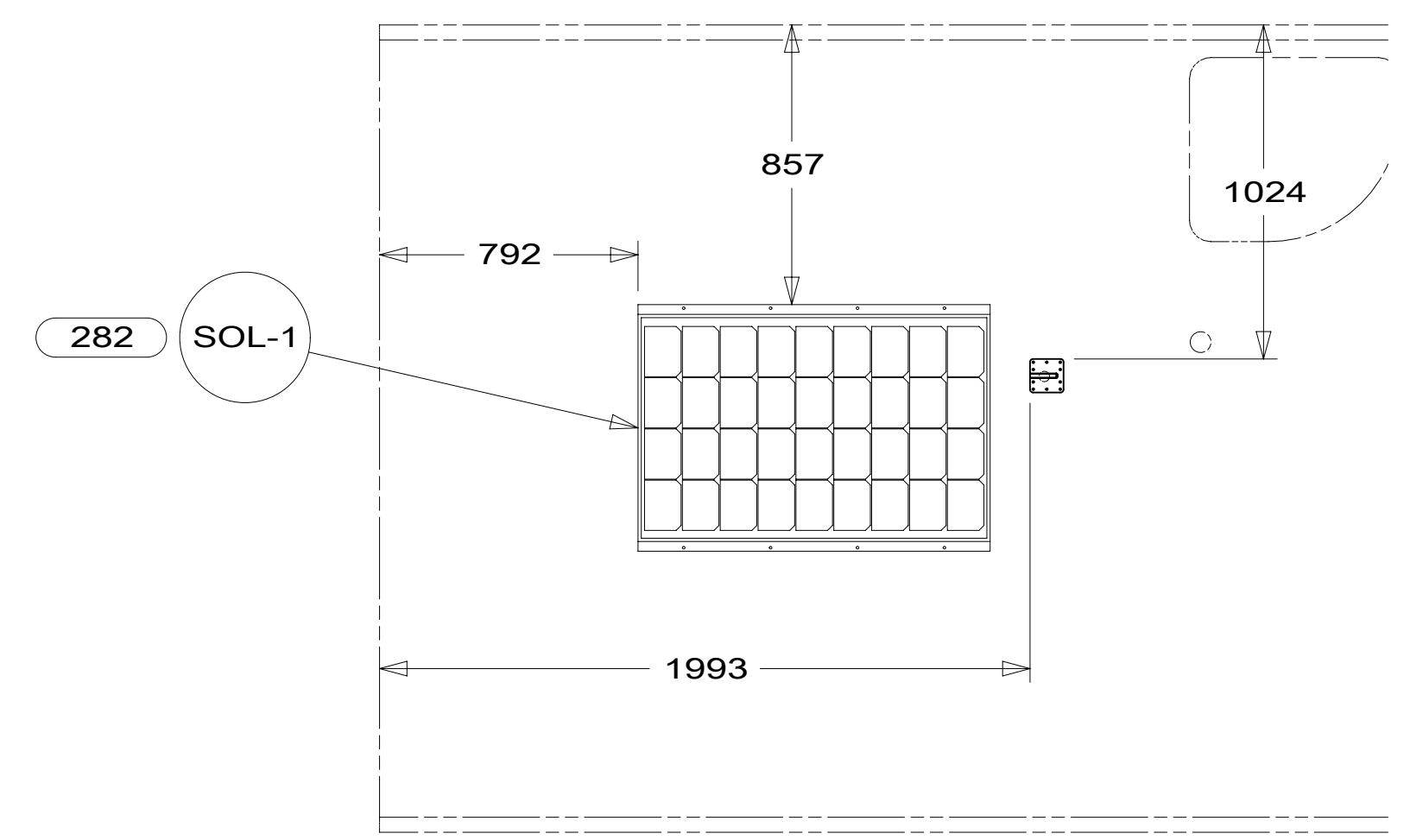
THE SATELLITE DISH AND WIRE CONNECTIONS ARE TO BE PLACED ON THE CENTERLINE OF THE MOTORHOME FACING FORWARD.

SEPARATE CABLES AND INSTALL WIRE COVER OVER HOLE IN ROOF ASM WITH CABLES EXITING ON PASSENGERS SIDE.

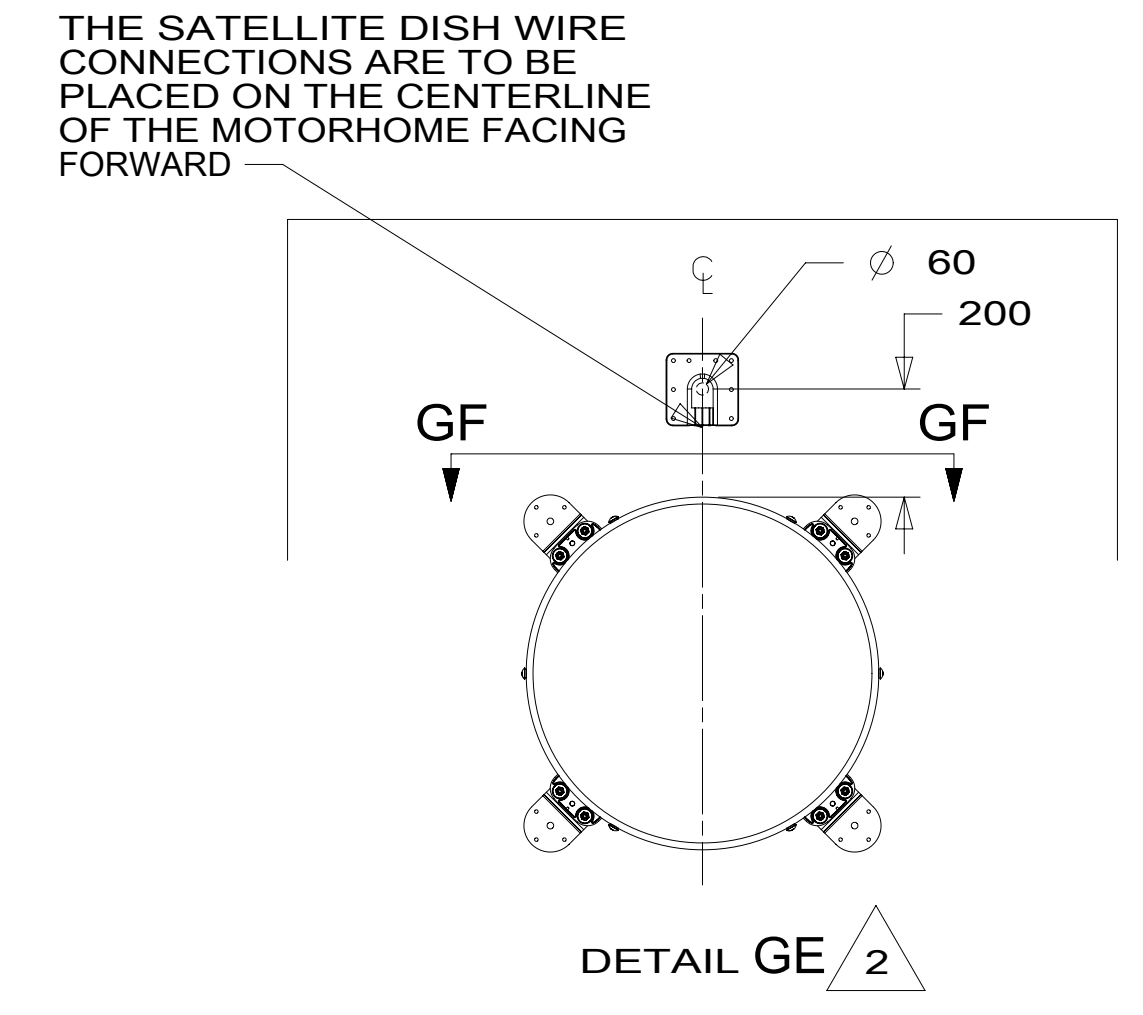
WHEN APPLYING ROOF SEALANT TO SATELLITE DISH, PLACE ROOF SEALANT HERE (APPROX. 75MM WIDE) AND PUSH THE CABLES INTO THE SEALANT TO STABILIZE THEM.

CONNECT CABLE ASM-COAX FROM ROOF ASM TO COAX CABLES ON SATELLITE DISH AND CONNECT 10' CABLE-DATA FROM ROOF ASM TO DATA CABLE FROM SATELLITE DISH AND PLACE ALL CONNECTIONS BACK INTO ROOF ASM.

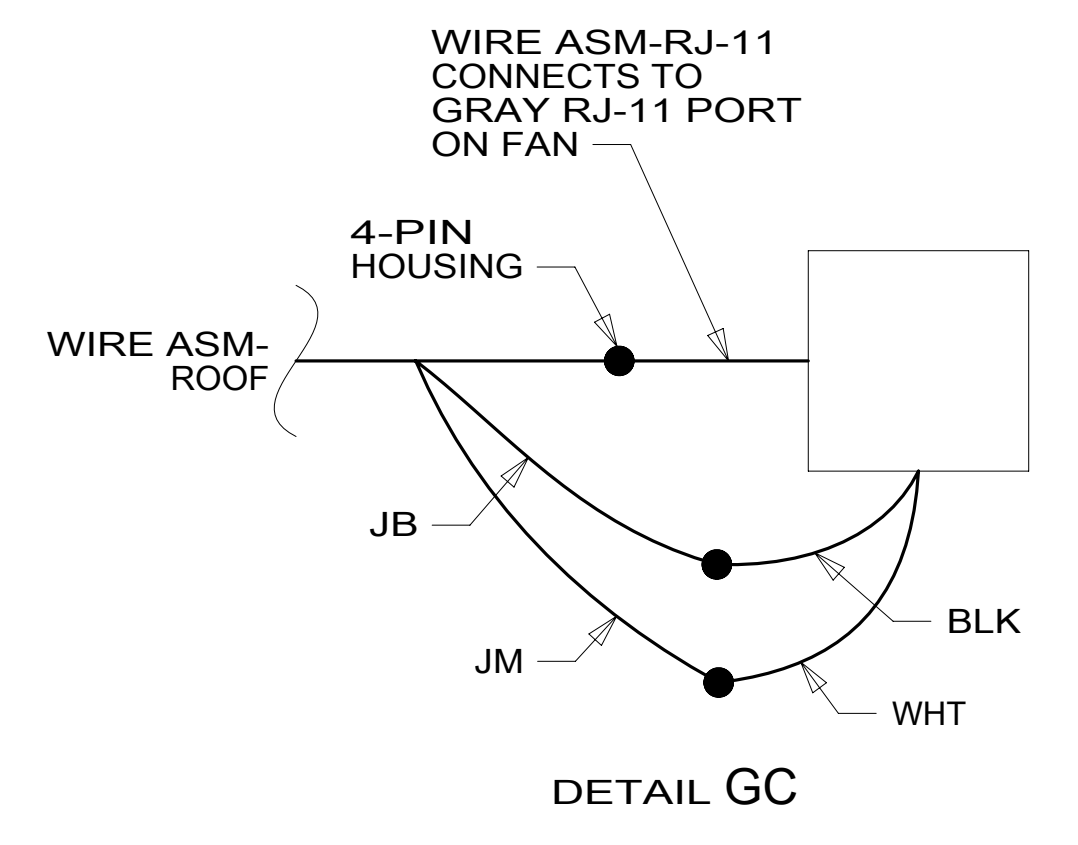
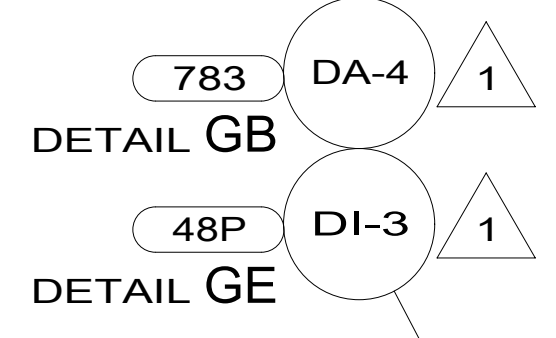
DETAIL GB



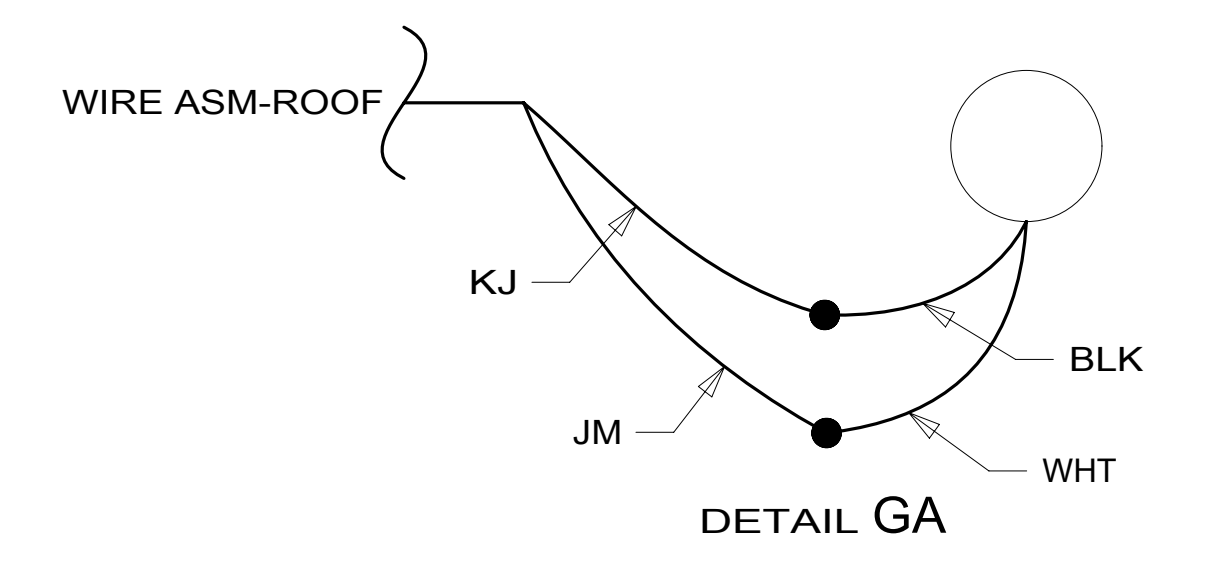
DETAIL GD



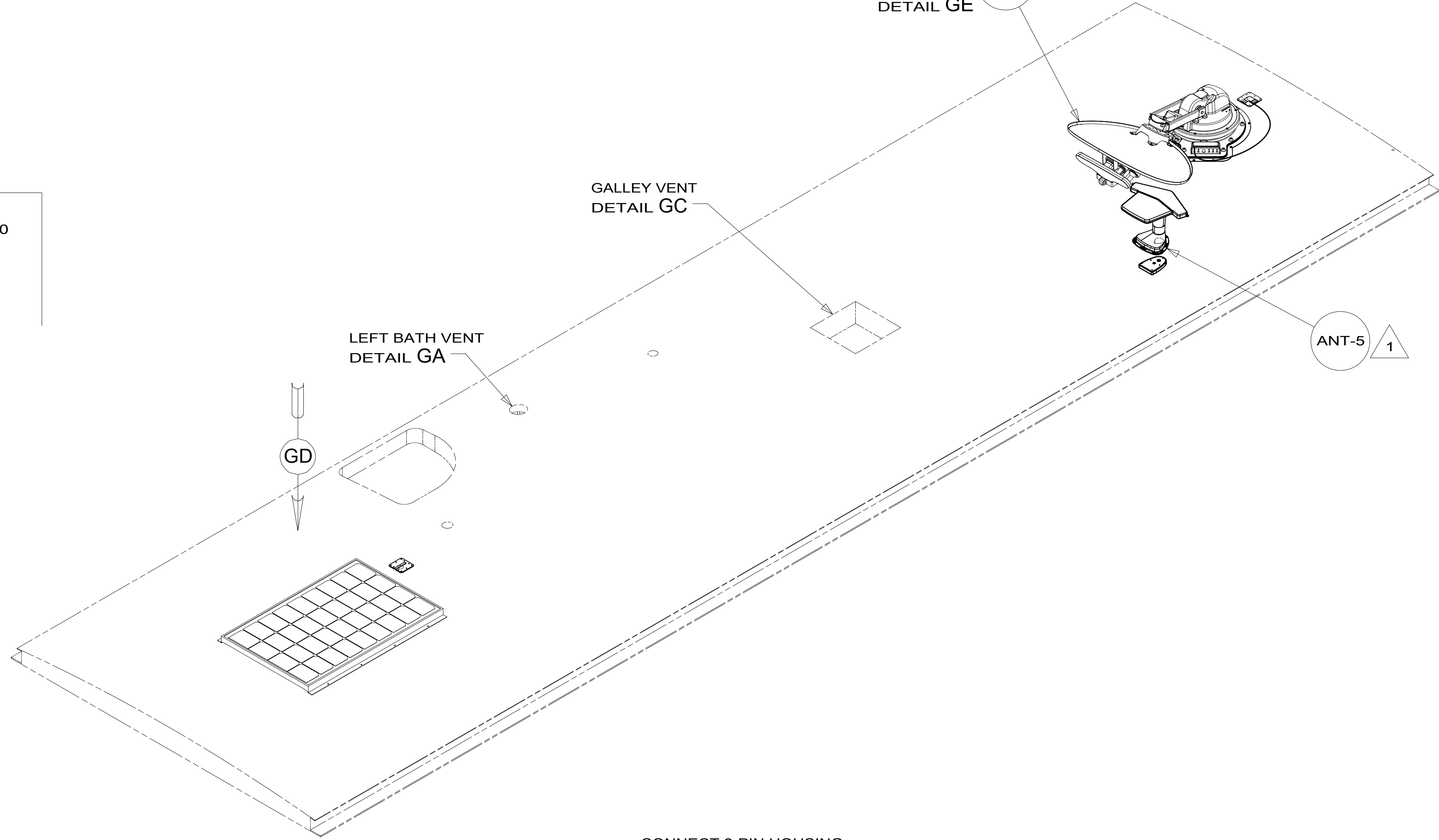
DETAIL GE 2



DETAIL GC



DETAIL GA



GALLEY VENT  
DETAIL GC

LEFT BATH VENT  
DETAIL GA

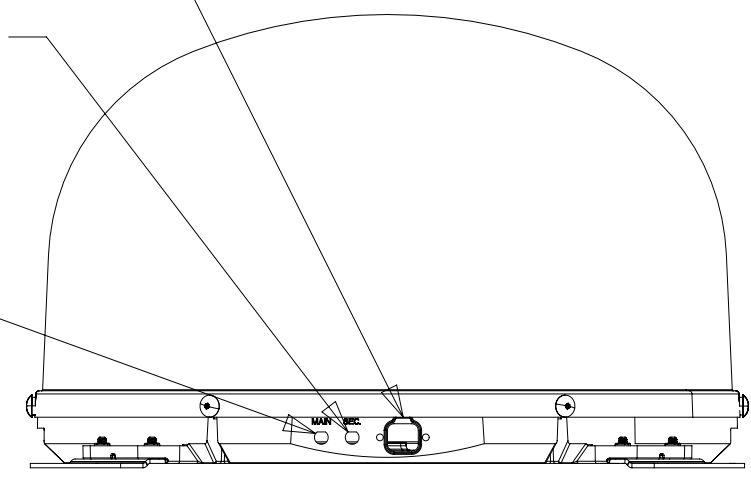
GD

ANT-5 1

CONNECT 2-PIN HOUSING FROM ROOF ASM TO SATELLITE DISH HERE AND ADD CONVOLUTED TUBING

CONNECT CABLE ASM COAX (ORG-2) FROM ROOF ASM TO SEC INPUT ON SATELLITE DISH

CONNECT CABLE ASM COAX (ORG) FROM ROOF ASM TO MAIN INPUT ON SATELLITE DISH



VIEW GF-GF

2 REMOVE ALL SHIPPING RESTRAINTS AS SPECIFIED IN THE INSTALLATION PROCESS.

1 SEE ANTENNA INSTALLATION MANUAL FOR CORRECT INSTALLATION PROCEDURE.

NOTES:

FOR ELECTRICAL TORQUE SPECIFICATIONS SEE DWG NO. 128783-01-000

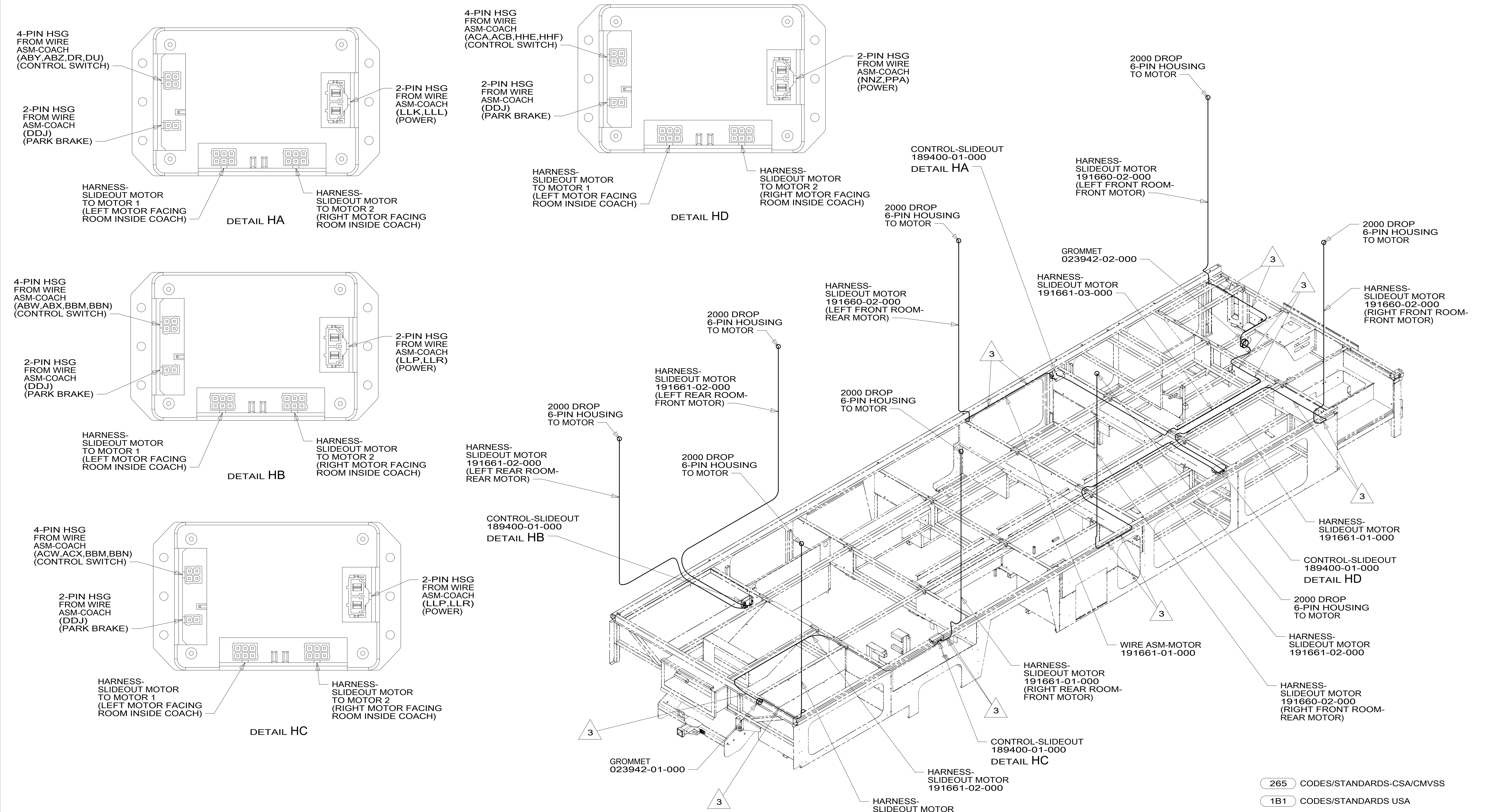
FOR ELECTRICAL CALLOUTS SEE DWG NO. 121339-01-000

- 282 SOLAR PANEL - 100 WATT
- 783 SATELLITE HD TV SYSTEM AUTOC
- 48P SAT TV SYSTEM IN-MOTION
- 265 CODES/STANDARDS-CSA/CMVSS
- 1B1 CODES/STANDARDS USA

FIRST USED	
<b>15 J32D</b>	
DO NOT SCALE DRAWING	
TITLE: <b>WIRING INSTL-BODY, 12V</b>	
SHEET 7	PART NO <b>190407</b> REV
1 15-May-2015	

\*190407





- 3 CLAMP-CABLE 10495-02-000
2. SEE WIRING DIAGRAM-BODY, 12V FOR ADDITIONAL INFORMATION.
1. ALL WIRES TO BE CLAMPED WITH CLAMP 10495-01-000 OR WIRE TIE 8343-02-000 EVERY 600MM, UNLESS OTHERWISE SPECIFIED.

NOTES:

FOR ELECTRICAL TORQUE SPECIFICATIONS SEE DWG NO. 128783-01-000

FOR ELECTRICAL CALLOUTS SEE DWG NO. 121339-01-000

- 265 CODES/STANDARDS-CSA/CMVSS
- 1B1 CODES/STANDARDS USA
- 1B1 265

FIRST USED	
<b>15 J32D</b>	
<b>DO NOT SCALE DRAWING</b>	
<b>WIRING INSTL-BODY, 12V</b>	
SHEET 8	PART NO 190407 REV

\* 190407