



DANGER

Danger of electrical shock, burns or death. Always remove all power sources before attempting any repair, service or diagnostic work. Power can be present from shore power, generator, inverter or battery. All power sources must be disabled and secured before performing any service.



CAUTION

If you lack the skills, tools or equipment to perform diagnostic or repair work leave such work to an authorized Winnebago Industries dealer or other qualified shop.

DRAWING NO.	MODEL	SHEET
190306-01	D30A	1,2,3,6
190306-02	D33C	1,2,3,6
190306-03	D35G	1,2,3,6
190306-04	D36Z	1,4,5,6

RELEASE A REV/DATE DWG NO. 190306
 REV ZONE REVISION RECORD DATE DFR-ORIG

	D30A	D33C	D35G	D36Z
CABLE ASM-CHASSIS GND EXT (BLK)	133566-12-011	133566-12-042	133566-12-041	133566-12-011
CABLE ASM-CHASSIS BATTERY DISCONNECT SUPPLY (RED)	141415-32-019	141415-32-055	141415-32-037	141415-32-029
CABLE ASM-COACH BATTERY DISCONNECT SUPPLY (YEL)	141416-52-014	141416-52-050	141416-52-043	141416-52-039
CABLE ASM-COACH BATTERY GND (BLK)	133567-12-008	133567-12-008	133567-12-008	133567-12-006
CABLE ASM-CHASSIS BATTERY DISCONNECT RETURN (PUR)	141415-12-023	141415-12-026	141415-12-015	141415-12-027
CABLE ASM-GENERATOR (GRN)	141415-42-068	141415-42-085	141415-42-094	141415-42-107
LEVELING SYSTEM POWER CABLE (BLU)	60M 141415-22-048	141415-22-012	141415-22-038	141415-22-014
LEVELING SYSTEM GND CABLE (BLK)	60M 133566-12-008	133566-12-008	133566-12-008	133566-12-008
WIRE ASM-INVERTER	401 154845-02-053	154845-02-017	154845-02-005	
CABLE ASM-STARTER (RED)	141416-32-010	141416-32-041	141416-32-043	141416-32-011
CABLE ASM-COACH BATTERY FUSE	141416-52-003	141416-52-003	141416-52-003	141416-52-006
CABLE ASM-CHASSIS BATTERY FUSE	141415-32-003	141415-32-003	141415-32-003	141415-32-006
CABLE ASM (ORG) FROM COACH BATTERY TO INVERTER FUSE				175207-62-004
CABLE ASM (ORG) FROM INVERTER FUSE TO INVERTER BATT DISCONNECT				175207-62-016
CABLE ASM (ORG) FROM BATTERY DISCONNECT TO POSITIVE POST ON INVERTER				175207-62-007
CABLE ASM (BLK) FROM COACH BATTERY TO INVERTER NEGATIVE TERMINAL				175211-01-018
CABLE ASM-TEMPERATURE				1
CABLE ASM (YEL) JUMPER BETWEEN POSITIVE POSTS ON COACH BATTERY				141417-52-004 141417-51-002 (2) ← 15L
CABLE ASM (BLK) JUMPER BETWEEN NEGATIVE POSTS ON COACH BATTERY				133568-12-004 133568-11-002 (2) ← 15L
CABLE ASM-INVERTER GROUND (GRN)				136145-01-021

- 15L RESIDENTIAL REFRIGERATOR PKG
- 60M HYDRAULIC LEVEL JACKS-AUTO
- 401 INVERTER-DC/AC, 1000 WATT
- 265 CODES/STANDARDS-CSA/CMVSS
- 1B1 CODES/STANDARDS USA

WINNEBAGO COPYRIGHT 2014 WINNEBAGO INDUSTRIES, INC.

UNSPECIFIED TOLERANCES ARE:
 WHOLE DIM (X) : 3
 ONE-PLACE (X.X) : 1.5
 TWO-PLACE (X.XX) : 0.50
 ANGLE : 1°

THIRD ANGLE PROJECTION

DO NOT SCALE DRAWING REFER TO ES0018 FOR FASTENER TIGHTENING GUIDELINES

TITLE: **BATTERY INSTL**

SHEET 1 OF 6 PART NO. 190306 REV

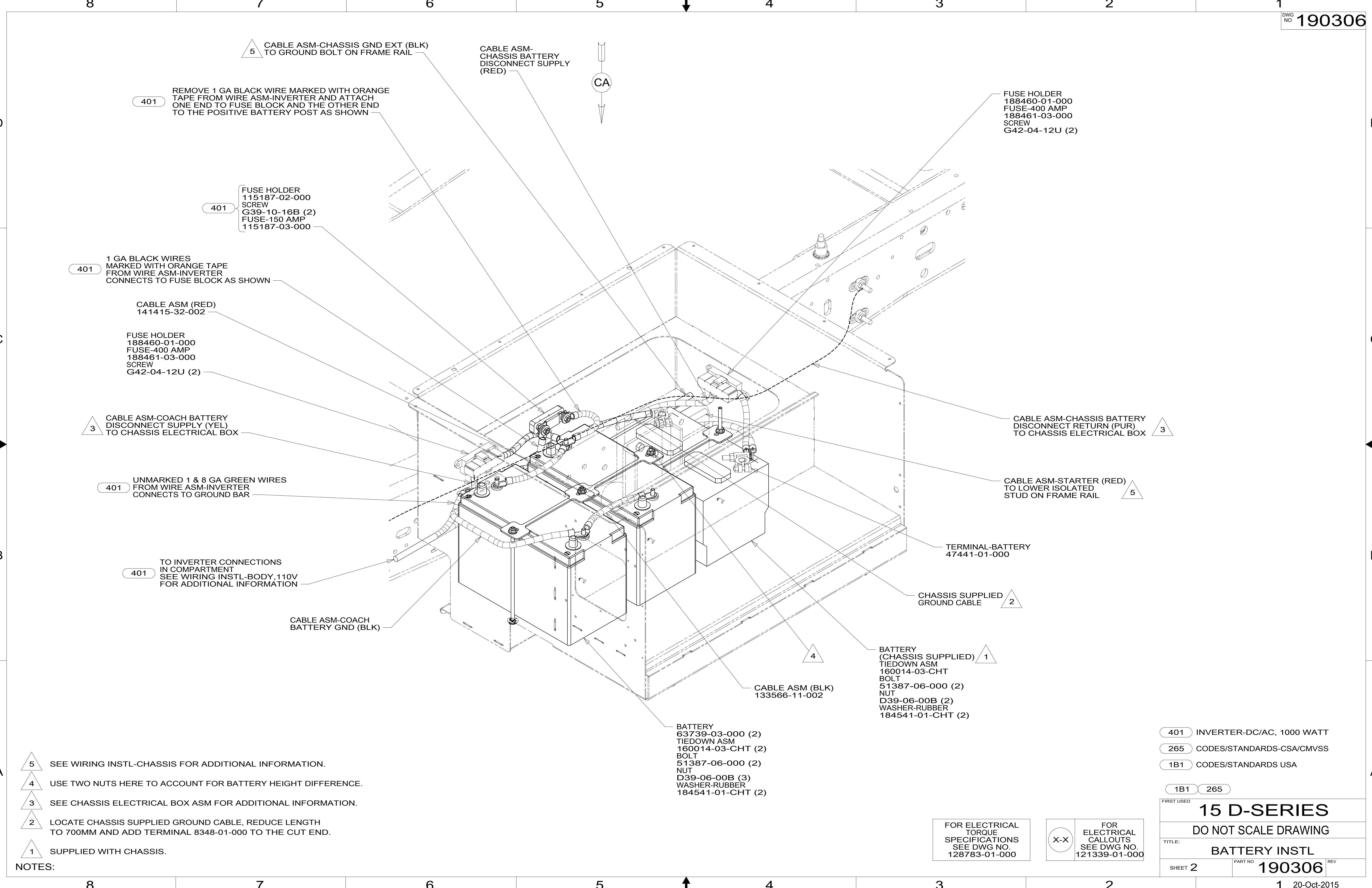
REF: 1 20-Oct-2015

FOR ELECTRICAL TORQUE SPECIFICATIONS SEE DWG NO. 128783-01-000

FOR ELECTRICAL CALLOUTS SEE DWG NO. 121339-01-000

1 CABLE ASM-TEMPERATURE IS PART OF WIRE ASM-CHASSIS.

190306



401 REMOVE 1 GA BLACK WIRE MARKED WITH ORANGE TAPE FROM WIRE ASM-INVERTER AND ATTACH ONE END TO FUSE BLOCK AND THE OTHER END TO THE POSITIVE BATTERY POST AS SHOWN

401 FUSE HOLDER 115187-02-000 SCREW G39-10-16B (2) FUSE-150 AMP 115187-03-000

401 1 GA BLACK WIRES MARKED WITH ORANGE TAPE FROM WIRE ASM-INVERTER CONNECTS TO FUSE BLOCK AS SHOWN

CABLE ASM (RED) 141415-32-002

FUSE HOLDER 188460-01-000 FUSE-400 AMP 188461-03-000 SCREW G42-04-12U (2)

3 CABLE ASM-COACH BATTERY DISCONNECT SUPPLY (YEL) TO CHASSIS ELECTRICAL BOX

401 UNMARKED 1 & 8 GA GREEN WIRES FROM WIRE ASM-INVERTER CONNECTS TO GROUND BAR

401 TO INVERTER CONNECTIONS IN COMPARTMENT SEE WIRING INSTL-BODY, 110V FOR ADDITIONAL INFORMATION

CABLE ASM-COACH BATTERY GND (BLK)

CABLE ASM-CHASSIS BATTERY DISCONNECT SUPPLY (RED)

CA

FUSE HOLDER 188460-01-000 FUSE-400 AMP 188461-03-000 SCREW G42-04-12U (2)

CABLE ASM-CHASSIS BATTERY DISCONNECT RETURN (PUR) TO CHASSIS ELECTRICAL BOX 3

CABLE ASM-STARTER (RED) TO LOWER ISOLATED STUD ON FRAME RAIL 5

TERMINAL-BATTERY 47441-01-000

CHASSIS SUPPLIED GROUND CABLE 2

BATTERY (CHASSIS SUPPLIED) TIEDOWN ASM 160014-03-CHT BOLT 51387-06-000 (2) NUT D39-06-00B (2) WASHER-RUBBER 184541-01-CHT (2)

CABLE ASM (BLK) 133566-11-002

BATTERY 63739-03-000 (2) TIEDOWN ASM 160014-03-CHT (2) BOLT 51387-06-000 (2) NUT D39-06-00B (3) WASHER-RUBBER 184541-01-CHT (2)

- 5 SEE WIRING INSTL-CHASSIS FOR ADDITIONAL INFORMATION.
- 4 USE TWO NUTS HERE TO ACCOUNT FOR BATTERY HEIGHT DIFFERENCE.
- 3 SEE CHASSIS ELECTRICAL BOX ASM FOR ADDITIONAL INFORMATION.
- 2 LOCATE CHASSIS SUPPLIED GROUND CABLE, REDUCE LENGTH TO 700MM AND ADD TERMINAL 8348-01-000 TO THE CUT END.
- 1 SUPPLIED WITH CHASSIS.

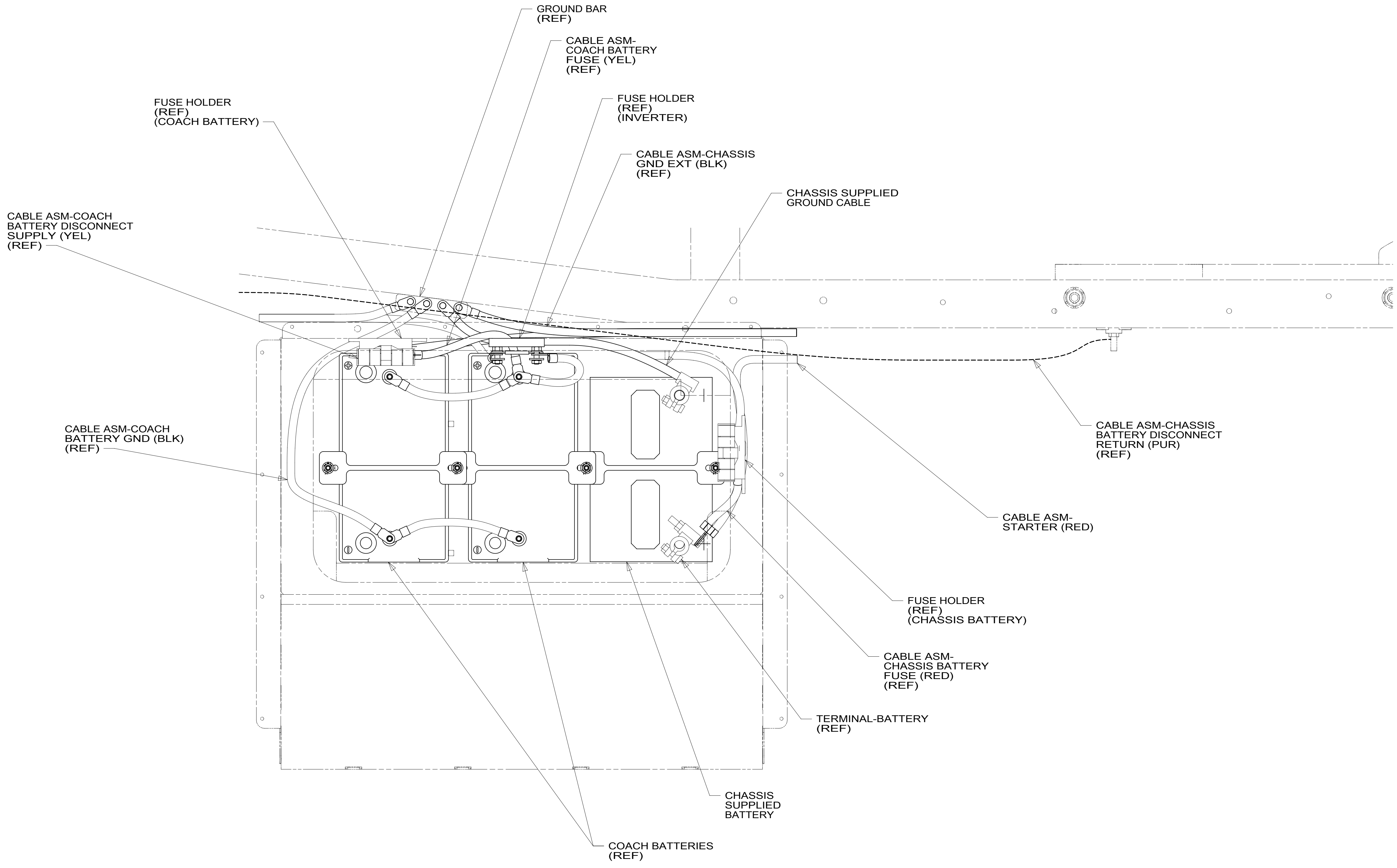
- 401 INVERTER-DC/AC, 1000 WATT
- 265 CODES/STANDARDS-CSA/CMVSS
- 1B1 CODES/STANDARDS USA

FIRST USED	
15 D-SERIES	
DO NOT SCALE DRAWING	
TITLE: BATTERY INSTL	
SHEET 2	PART NO 190306 REV
1 20-Oct-2015	

FOR ELECTRICAL TORQUE SPECIFICATIONS SEE DWG NO. 128783-01-000

X-X FOR ELECTRICAL CALLOUTS SEE DWG NO. 121339-01-000

190306 A



VIEW CA

265 CODES/STANDARDS-CSA/CMVSS

1B1 CODES/STANDARDS USA

1B1 265

FIRST USED **15 D-SERIES**

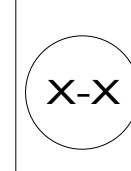
DO NOT SCALE DRAWING

TITLE: **BATTERY INSTL**

SHEET 3 PART NO **190306** REV

FOR ELECTRICAL TORQUE SPECIFICATIONS SEE DWG NO. 128783-01-000

FOR ELECTRICAL CALLOUTS SEE DWG NO. 121339-01-000



* 190306 A *

8

7

6

5

4

3

2

1

D

D

C

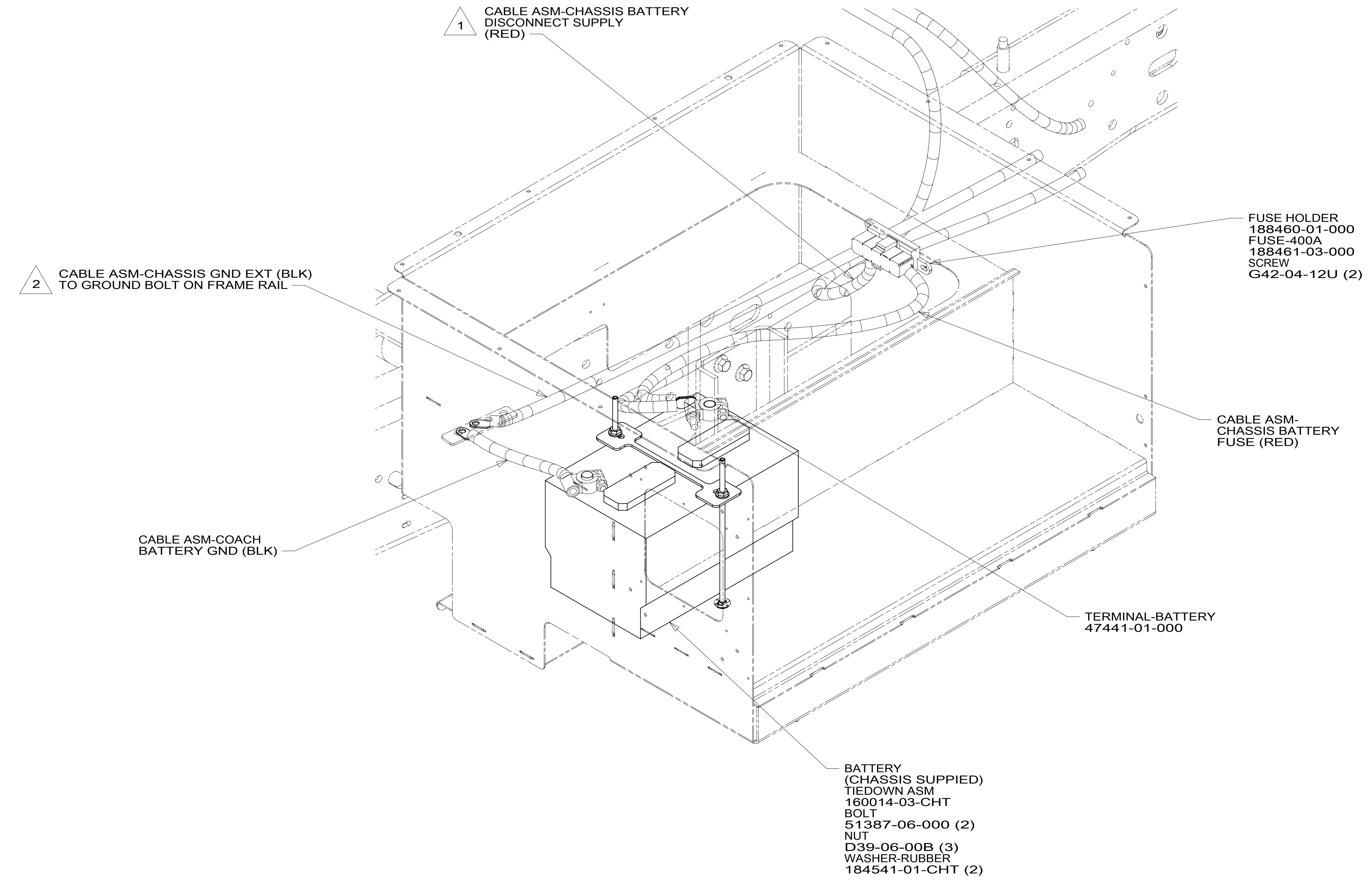
C

B

B

A

A



- 2 SEE WIRING INSTL-CHASSIS FOR ADDITIONAL INFORMATION.
- 1 SEE CHASSIS ELECTRICAL BOX ASM FOR ADDITIONAL INFORMATION.

NOTES:

FOR ELECTRICAL TORQUE SPECIFICATIONS SEE DWG NO. 128783-01-000

FOR ELECTRICAL CALLOUTS SEE DWG NO. 121339-01-000

265 CODES/STANDARDS-CSA/CMVSS

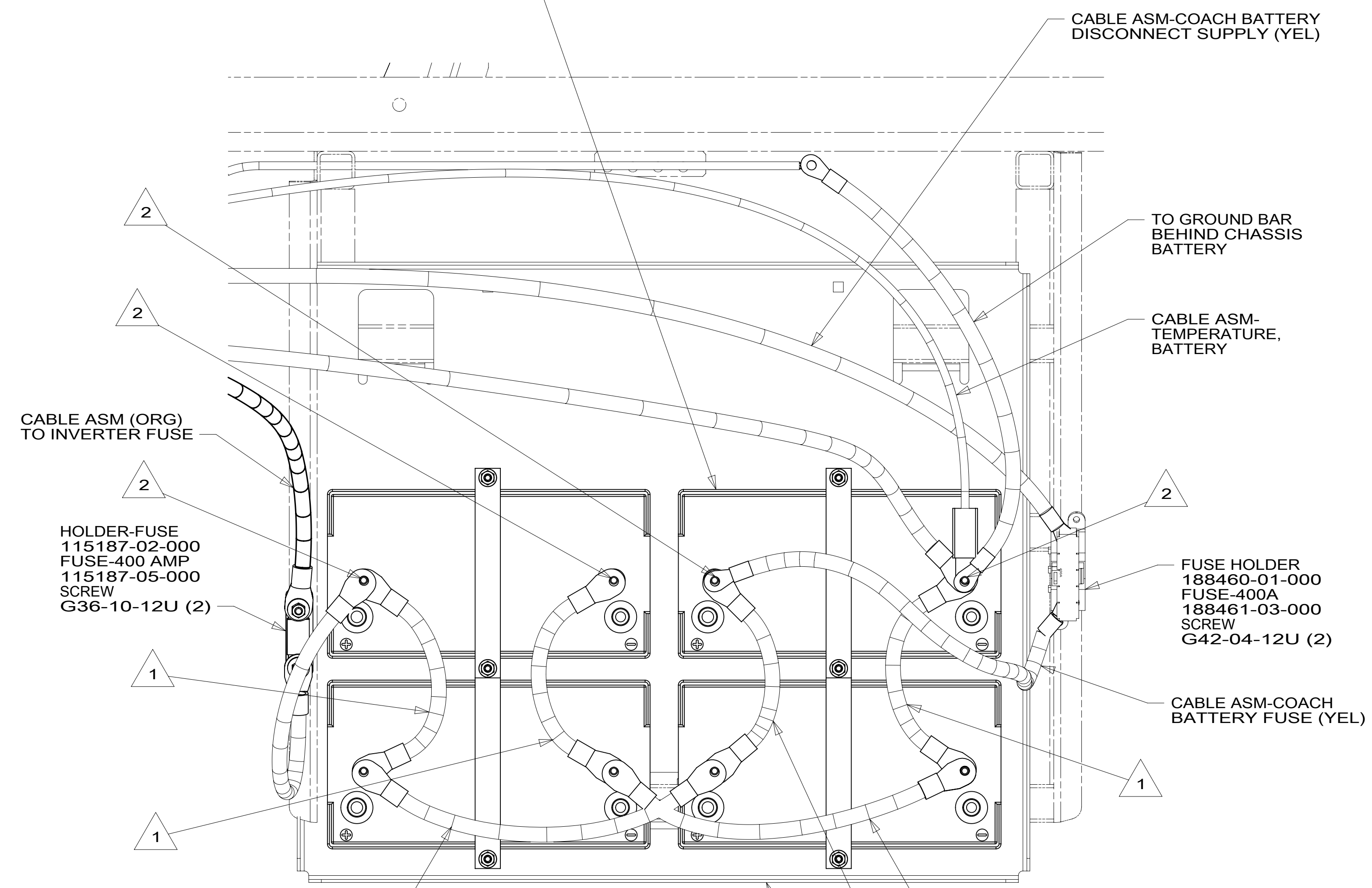
1B1 CODES/STANDARDS USA

1B1 265

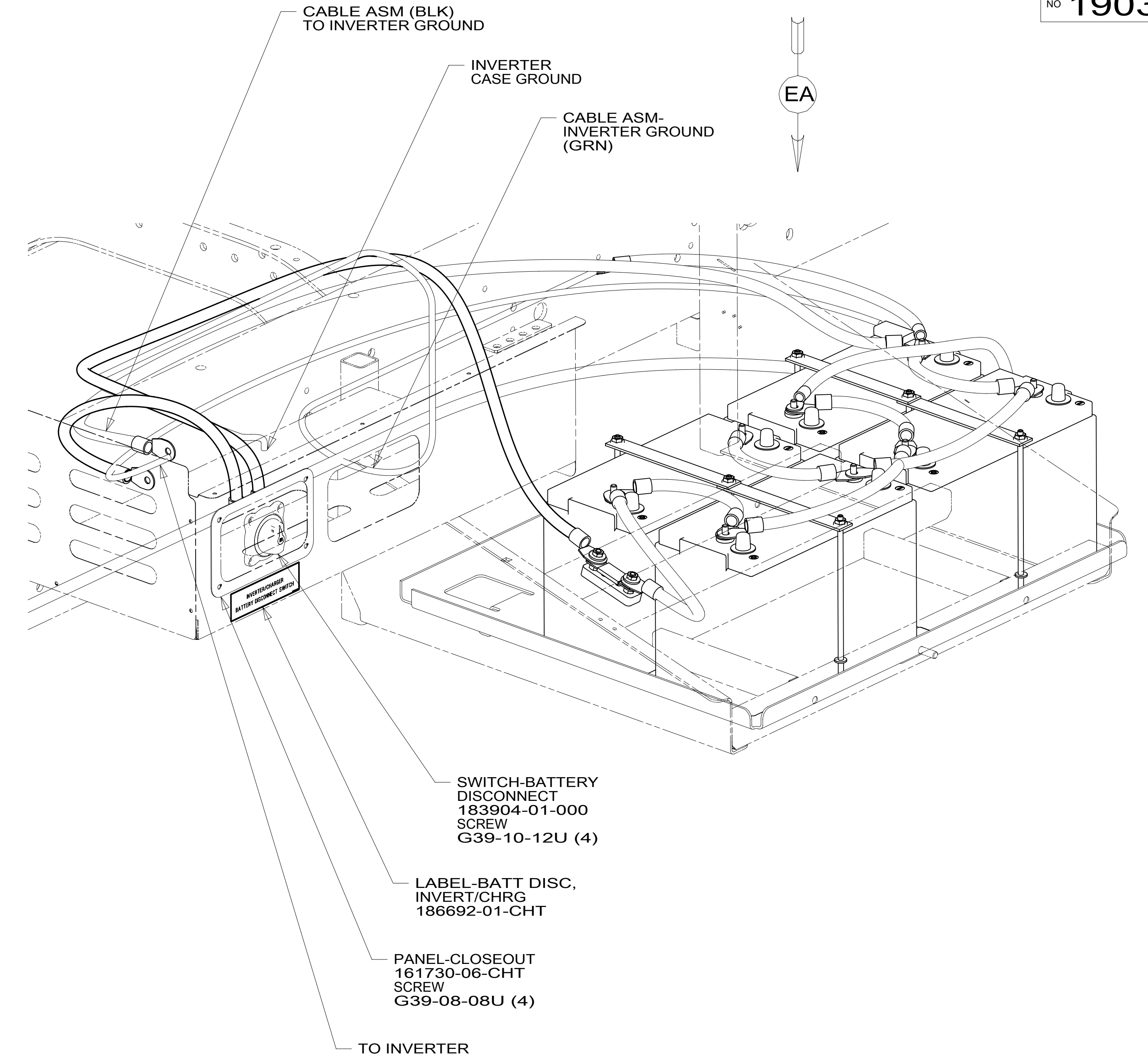
FIRST USED	
15 D-SERIES	
DO NOT SCALE DRAWING	
TITLE: BATTERY INSTL	
SHEET 4	PART NO 190306 REV

*190306

- 15L BATTERY-12V
063739-03-000 (4)
BOLT
51387-06-000 (6)
NUT-HEX
D39-05-00U (6)
WASHER-RUBBER
184541-01-CHT (6)
STRAP-BATTERY
TIE DOWN
138914-01-CHT (4)
- 145 BATTERY-12V
063739-03-000 (2)
BOLT
51387-06-000 (4)
NUT-HEX
D39-05-00U (4)
WASHER-RUBBER
184541-01-CHT (4)
STRAP-BATTERY
TIE DOWN
138914-01-CHT (2)



- VIEW EA
- TRAY-BATTERY
176574-03-CHT
NUT
D39-06-00U
WASHER
E13-17-00U
BOLT
C26-06-12U



- NOTES:
- 2 CONNECT TO OUTER BATTERY WITH OPTION 145
OPTION 15L SHOWN.
 - 1 CABLE NOT USED WITH OPTION 145

- 145 REFR-EXTRA CAP W/ICEMAKER
- 15L RESIDENTIAL REFRIGERATOR PKG
- 265 CODES/STANDARDS-CSA/CMVSS
- 1B1 CODES/STANDARDS USA

FIRST USED	
15 D-SERIES	
DO NOT SCALE DRAWING	
TITLE: BATTERY INSTL	
SHEET 5	PART NO 190306 REV
1 20-Oct-2015	

FOR ELECTRICAL TORQUE SPECIFICATIONS SEE DWG NO. 128783-01-000

FOR ELECTRICAL CALLOUTS SEE DWG NO. 121339-01-000

* 190306 A *

GENERATOR

INVERTER

LEVELING PUMP

BATTERY DISCONNECT SWITCH 1

COACH DISCONNECT

CHASSIS DISCONNECT

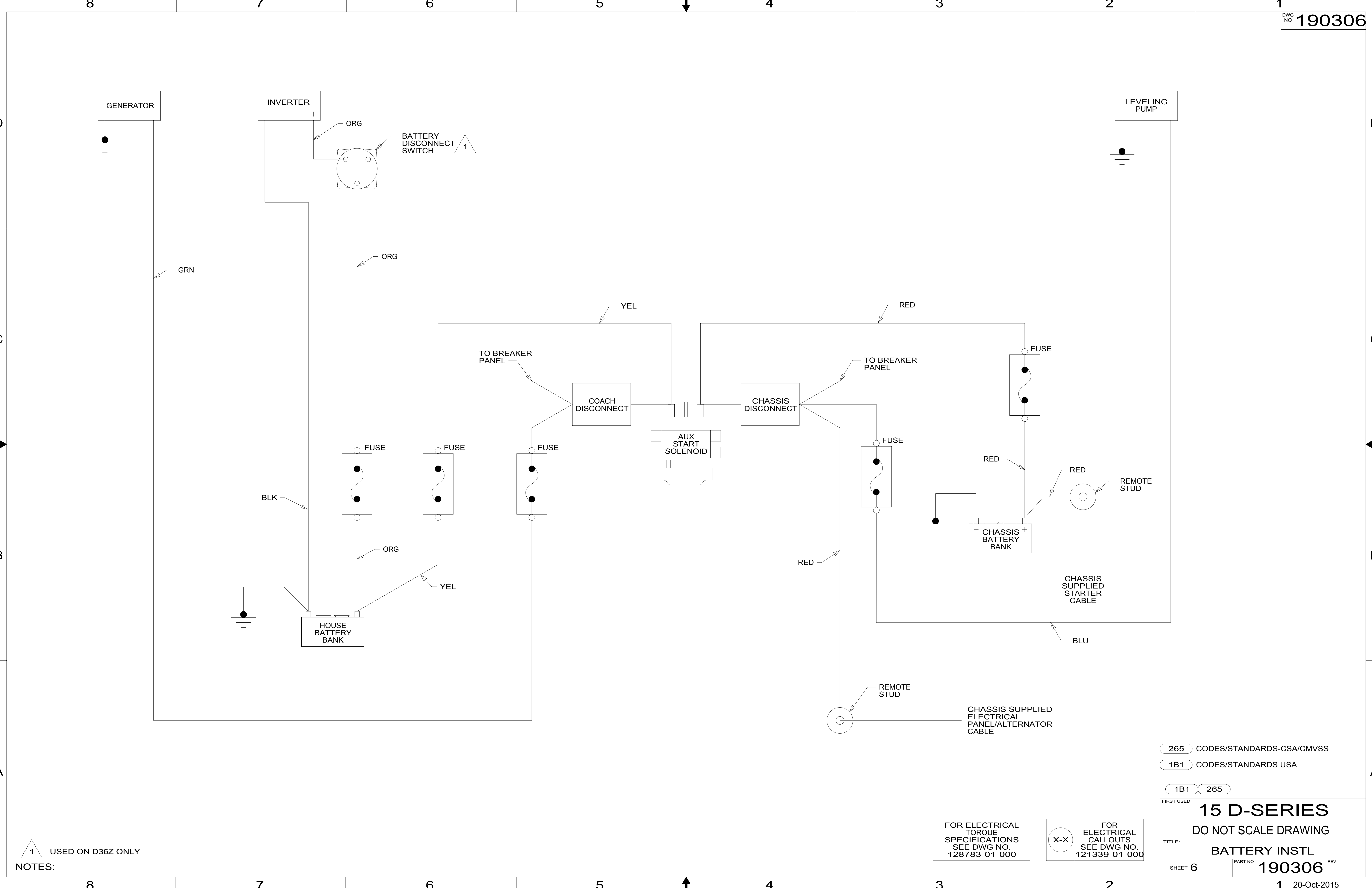
AUX START SOLENOID

HOUSE BATTERY BANK

CHASSIS BATTERY BANK

CHASSIS SUPPLIED STARTER CABLE

CHASSIS SUPPLIED ELECTRICAL PANEL/ALTERNATOR CABLE



NOTES: 1 USED ON D36Z ONLY

FOR ELECTRICAL TORQUE SPECIFICATIONS SEE DWG NO. 128783-01-000

FOR ELECTRICAL CALLOUTS SEE DWG NO. 121339-01-000

265 CODES/STANDARDS-CSA/CMVSS

1B1 CODES/STANDARDS USA

1B1 265

FIRST USED 15 D-SERIES

DO NOT SCALE DRAWING

TITLE: BATTERY INSTL

SHEET 6 PART NO 190306 REV

* 190306 A *