



**DANGER**

**Danger of electrical shock, burns or death.** Always remove all power sources before attempting any repair, service or diagnostic work. Power can be present from shore power, generator, inverter or battery. All power sources must be disabled and secured before performing any service.



**CAUTION**

If you lack the skills, tools or equipment to perform diagnostic or repair work leave such work to an authorized Winnebago Industries dealer or other qualified shop.

DRAWING NO.	SHEET
190253-01	1,2
190253-02	1,3

RELEASE	REV/DATE	DWG NO	190253
REV ZONE	A	REVISION RECORD	DATE DFT-ORIG

	623L/623B	
CABLE ASM-STARTER (RED)	185087-01-038	
CABLE ASM-COACH BATTERY (YEL)	141415-52-010	
CABLE ASM-COACH BATTERY GND (BLK)	133566-17-022	2
CABLE ASM-GENERATOR (GRN)	141415-42-035	2
CABLE ASM-GENERATOR GND (BLK)	133566-17-014	2
CABLE ASM-JUMPER,POS	141415-52-004	22W
CABLE ASM-JUMPER,NEG	133566-12-004	22W

- 22W BATTERY-SECOND
- 265 CODES/STANDARDS-CSA/CMVSS
- 1B1 CODES/STANDARDS USA

**WINNEBAGO** COPYRIGHT 2014 WINNEBAGO INDUSTRIES, INC.

DFT-ORIG	ORIG. DATE
CHKR	ALL DIMENSIONS ARE IN MILLIMETERS
P.E.	
M.E.	
DSNR	FIRST USED
UNSPECIFIED TOLERANCES ARE:	
WHOLE DIM (X) :	MATERIAL:
ONE-PLACE (X.X) :	
TWO-PLACE (X.XX) :	
ANGLE :	
THIRD ANGLE PROJECTION	
DO NOT SCALE DRAWING	REFER TO ES0018 FOR FASTENER TIGHTENING GUIDELINES
TITLE: <b>BATTERY INSTL</b>	
SHEET 1 OF 3	PART NO 190253

2 ROUTING OF CABLE SHOWN ON WIRING INSTL-CHASSIS ONLY.  
 1. SEE WIRING INSTL-CHASSIS FOR ADDITIONAL INFORMATION FOR ROUTING CABLES.

FOR ELECTRICAL TORQUE SPECIFICATIONS SEE DWG NO. 128783-01-000

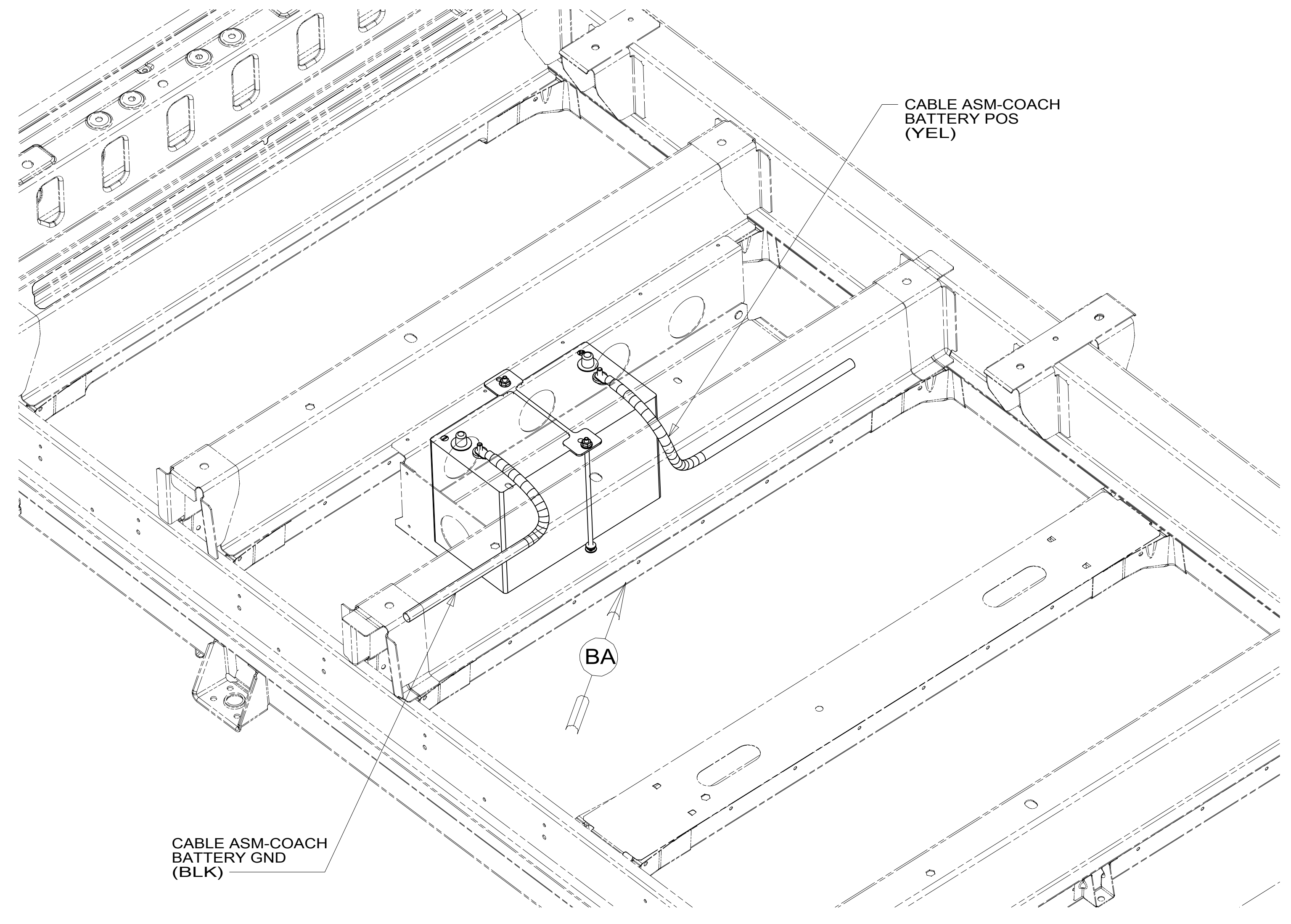
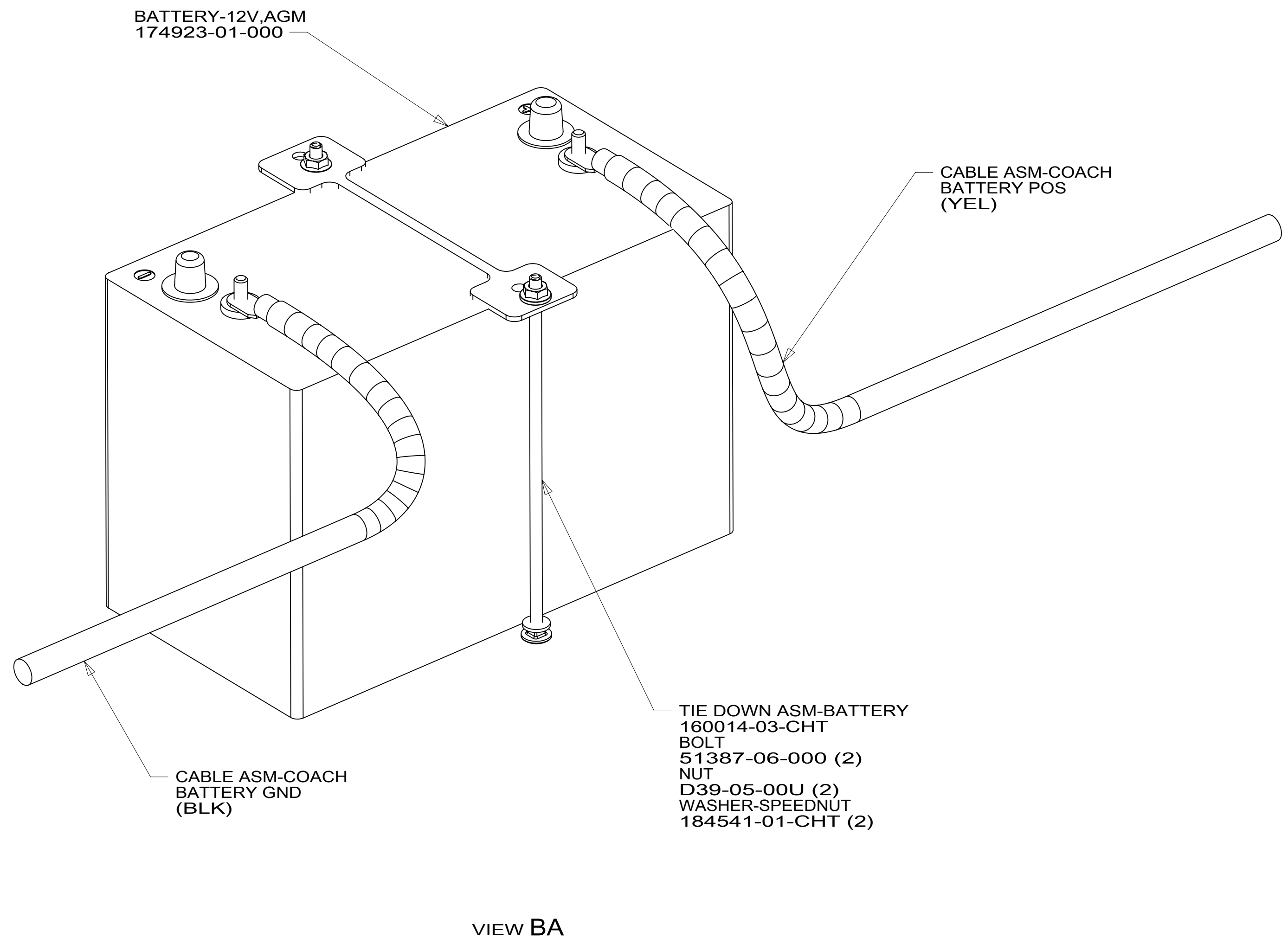
FOR ELECTRICAL CALLOUTS SEE DWG NO. 121339-01-000

\*190253 \*A

8 7 6 5 4 3 2 1

D  
C  
B  
A

D  
C  
B  
A



NOTES:  
1. SEE WIRING INSTL-CHASSIS FOR ADDITIONAL INFORMATION FOR ROUTING CABLES.

FOR ELECTRICAL TORQUE SPECIFICATIONS SEE DWG NO. 128783-01-000

FOR ELECTRICAL CALLOUTS SEE DWG NO. 121339-01-000

- 12X BATTERY-ONE
- 265 CODES/STANDARDS-CSA/CMVSS
- 1B1 CODES/STANDARDS USA

1B1 265 12X

FIRST USED  
**14 600-SER**

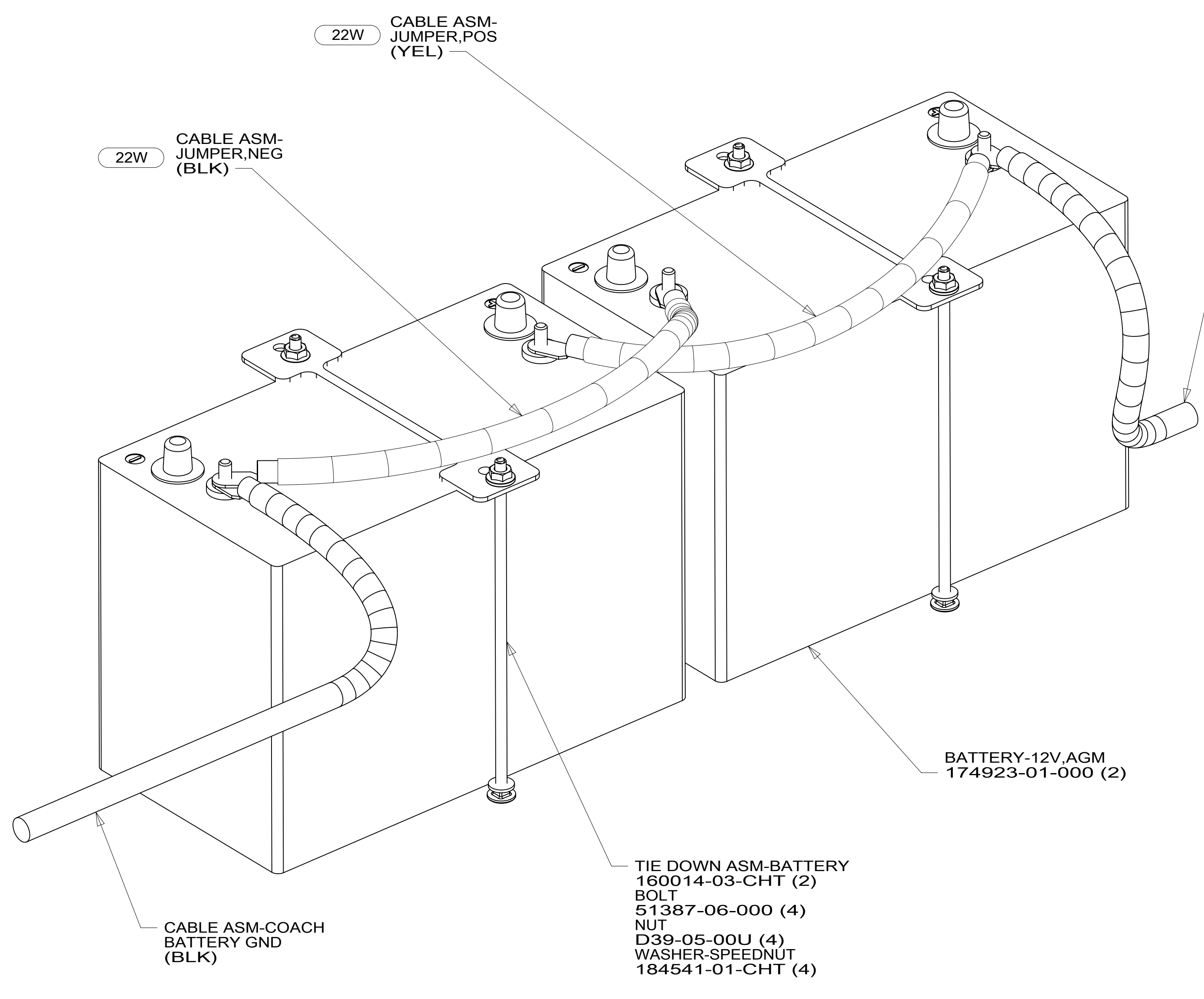
DO NOT SCALE DRAWING

TITLE:  
**BATTERY INSTL**

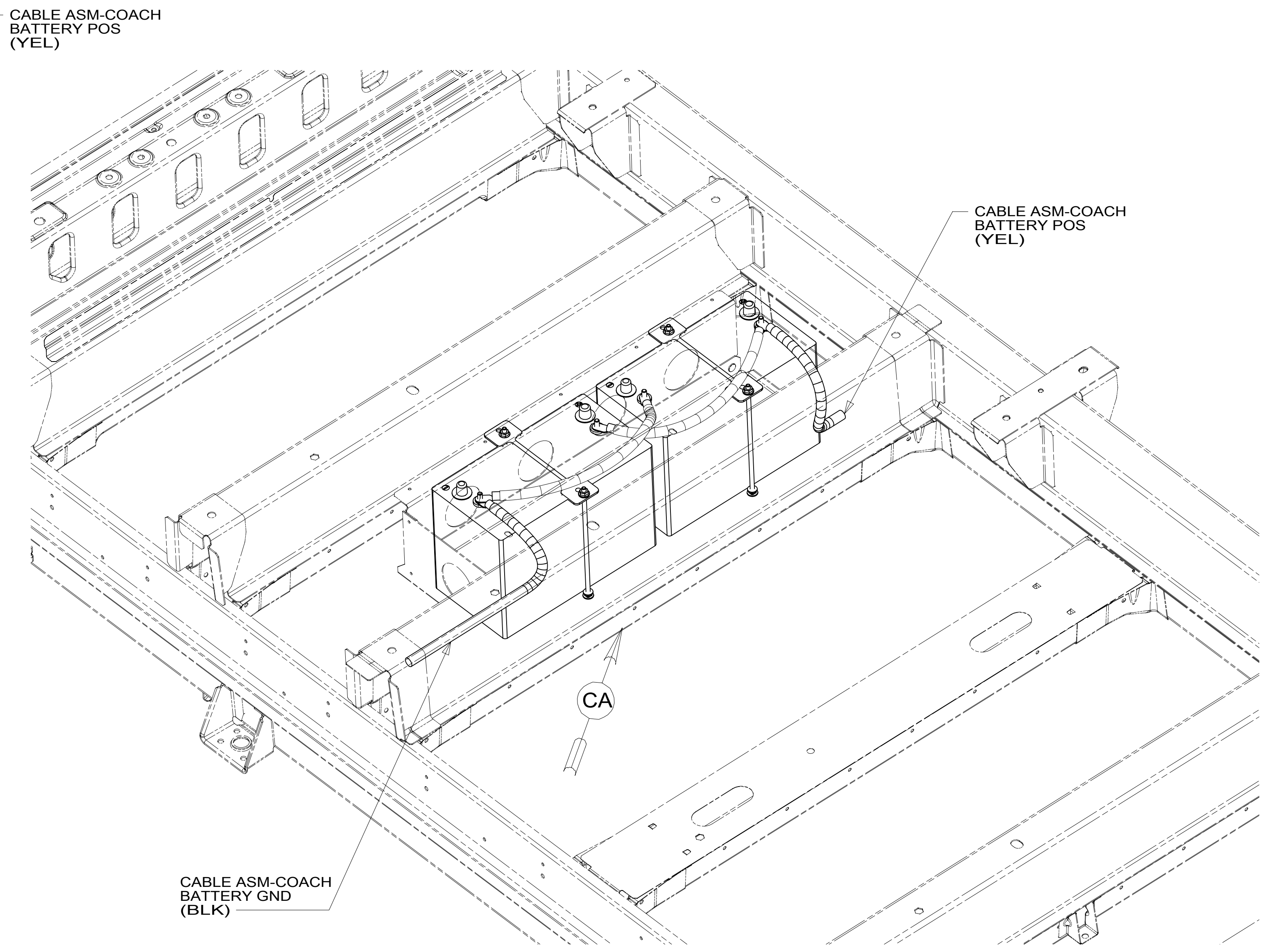
SHEET 2 PART NO **190253** REV

8 7 6 5 4 3 2 1

\*190253\*



VIEW CA



NOTES:  
 1. SEE WIRING INSTL-CHASSIS FOR ADDITIONAL INFORMATION FOR ROUTING CABLES.

FOR ELECTRICAL TORQUE SPECIFICATIONS SEE DWG NO. 128783-01-000

X-X FOR ELECTRICAL CALLOUTS SEE DWG NO. 121339-01-000

- 22W BATTERY-SECOND
- 265 CODES/STANDARDS-CSA/CMVSS
- 1B1 CODES/STANDARDS USA

1B1 265 38E

FIRST USED	<b>14 600-SER</b>	
TITLE:	<b>DO NOT SCALE DRAWING</b>	
	<b>BATTERY INSTL</b>	
SHEET 3	PART NO	190253
	REV	