



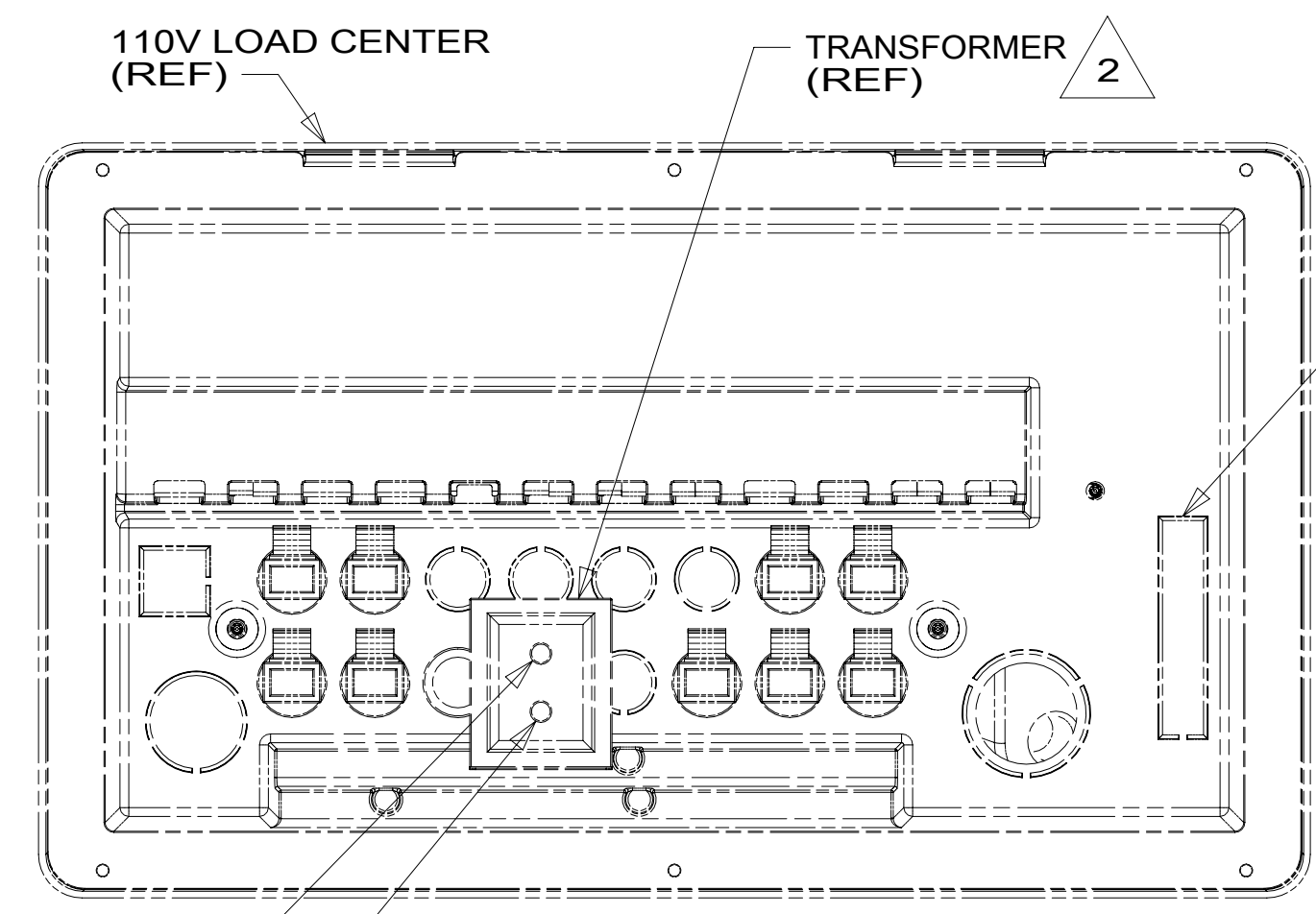
DANGER

Danger of electrical shock, burns or death. Always remove all power sources before attempting any repair, service or diagnostic work. Power can be present from shore power, generator, inverter or battery. All power sources must be disabled and secured before performing any service.

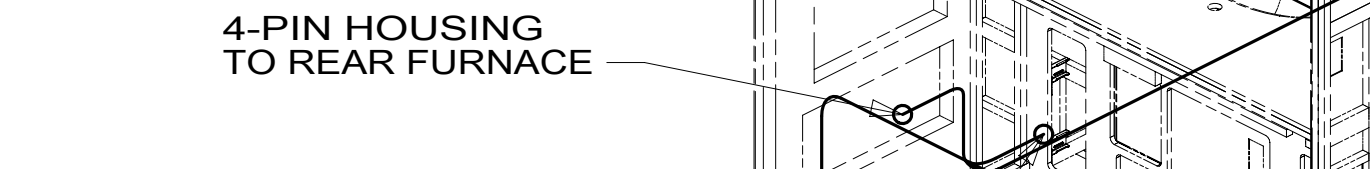
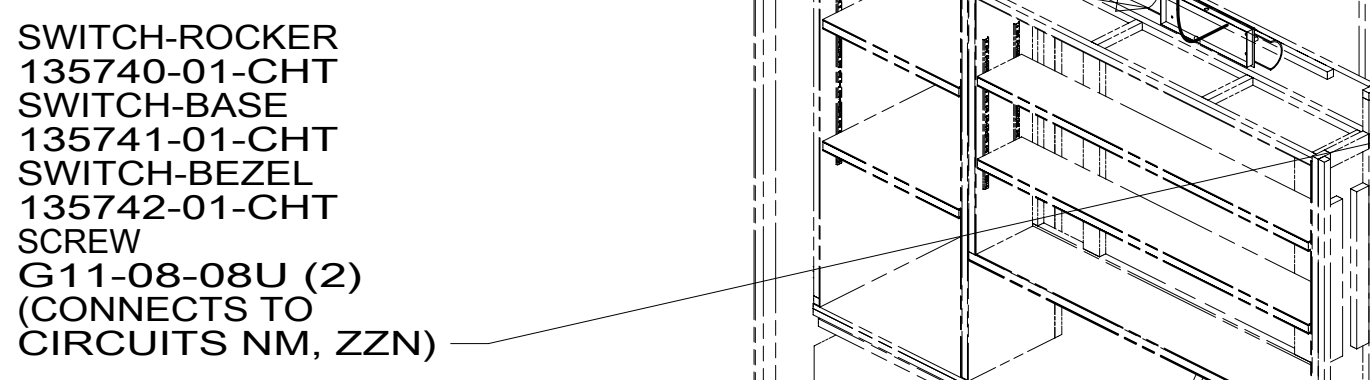
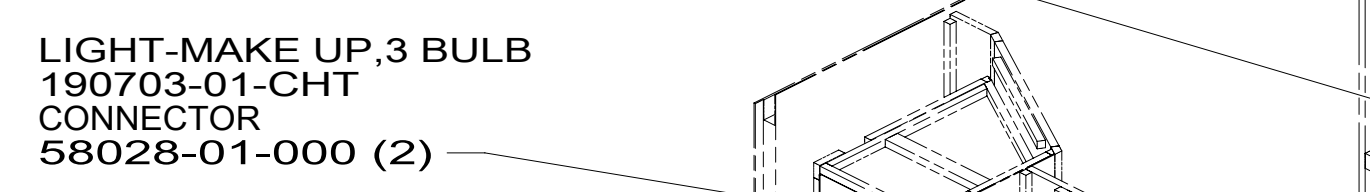
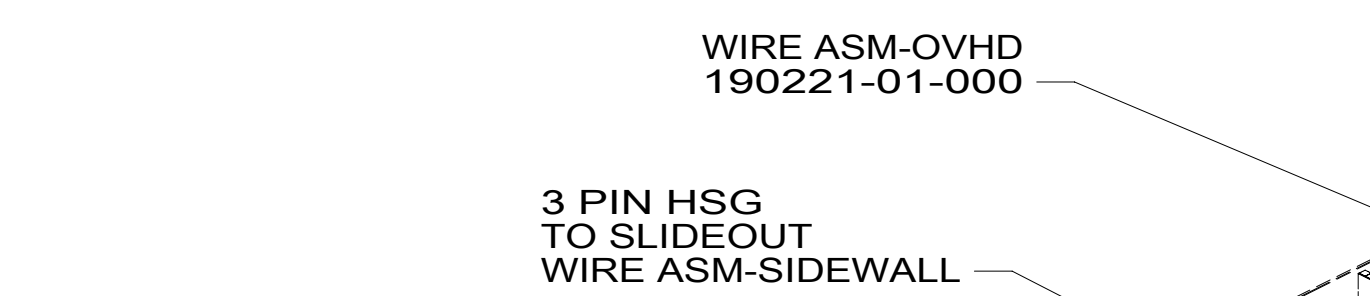
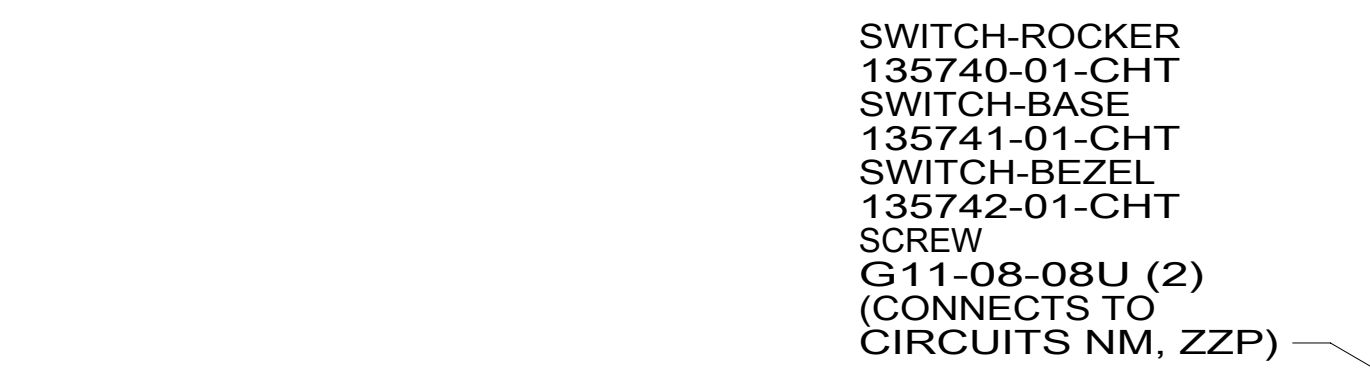


CAUTION

If you lack the skills, tools or equipment to perform diagnostic or repair work leave such work to an authorized Winnebago Industries dealer or other qualified shop.

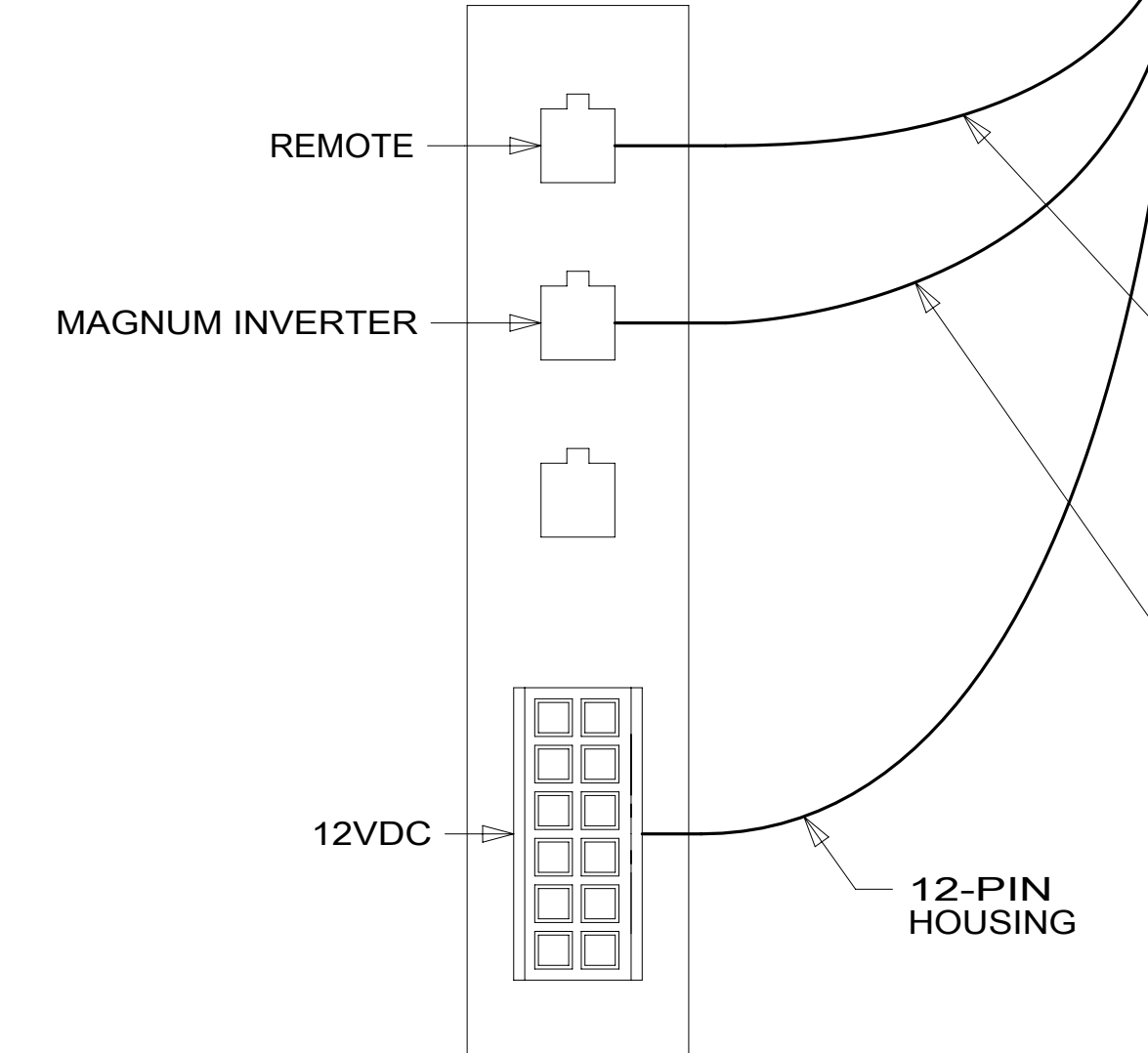
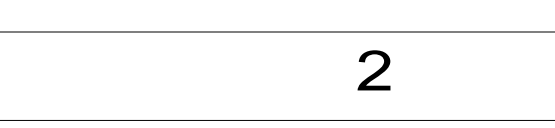
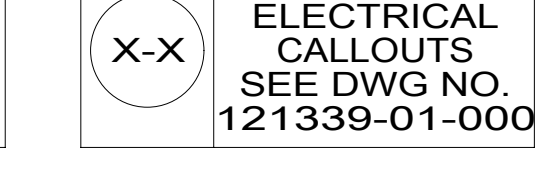
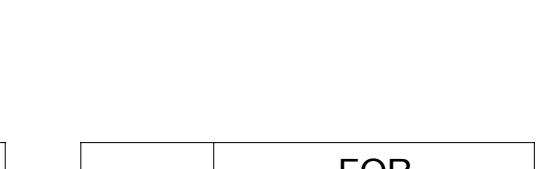
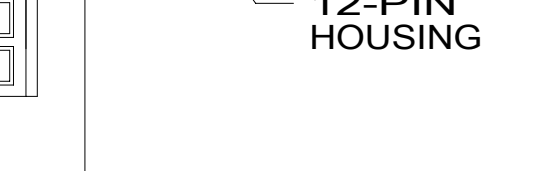
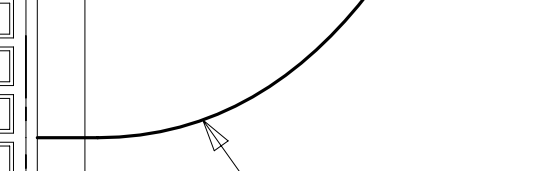
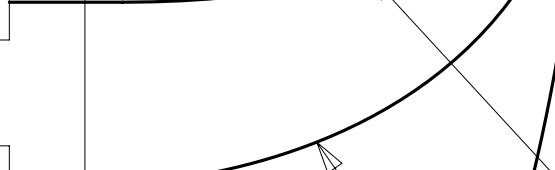
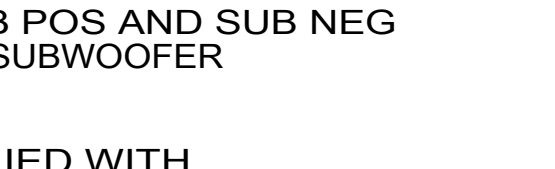
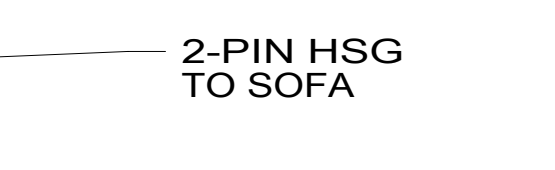
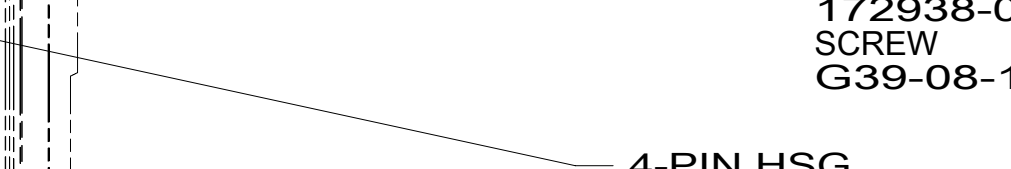
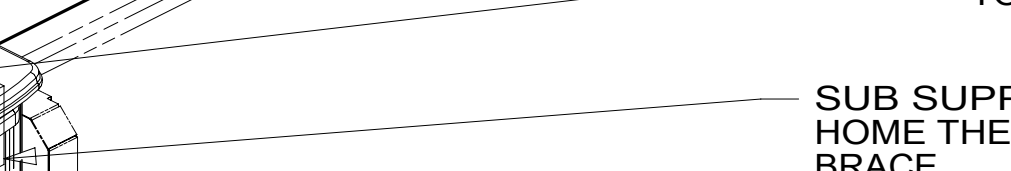
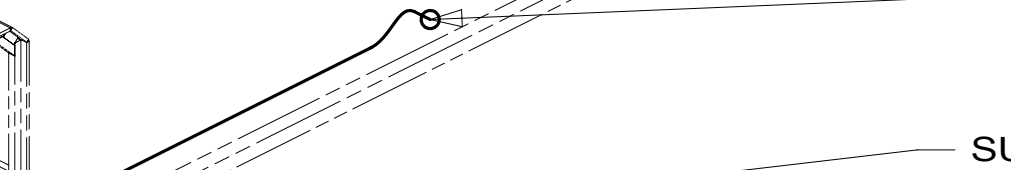
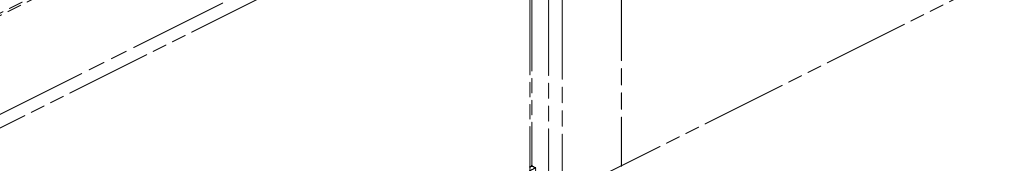
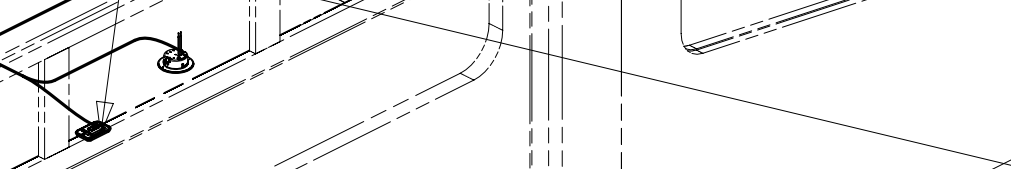
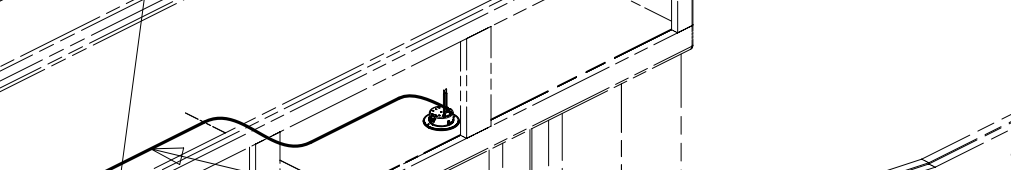
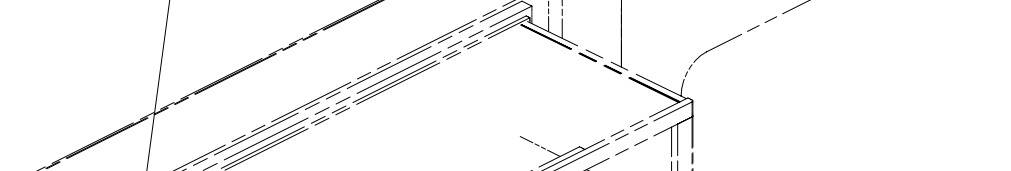
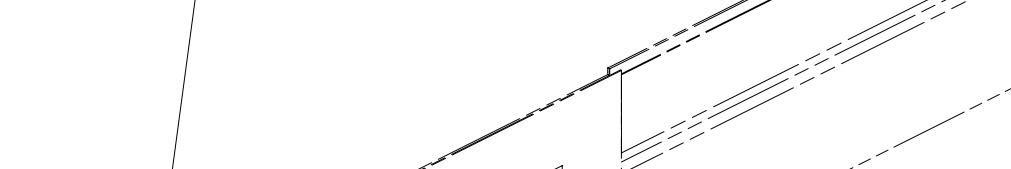
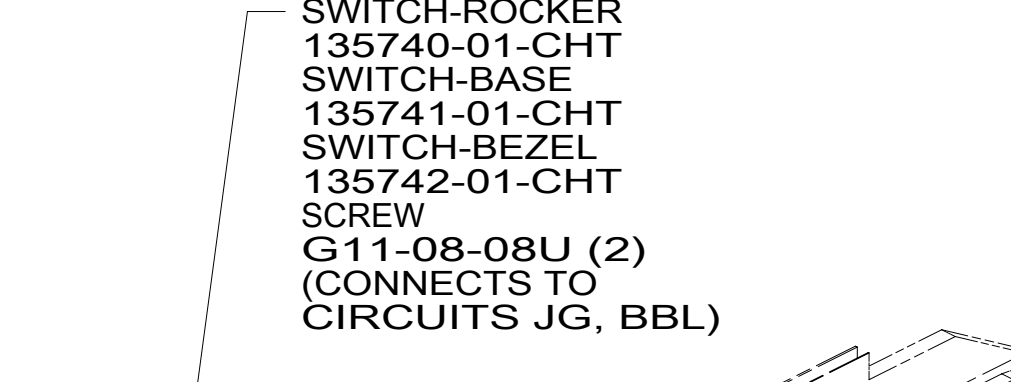
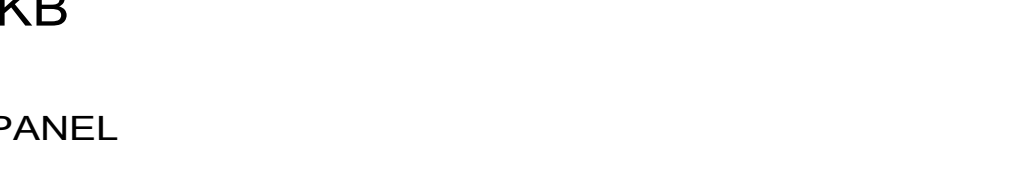
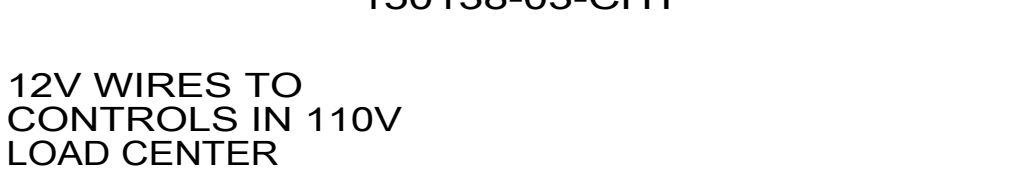
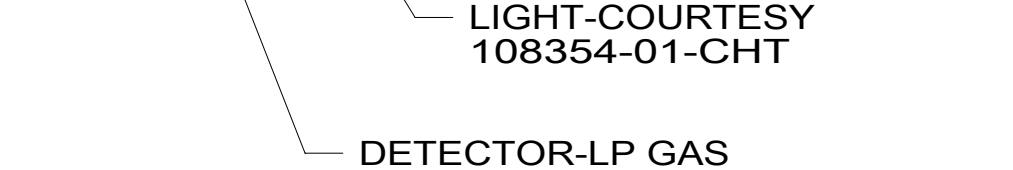
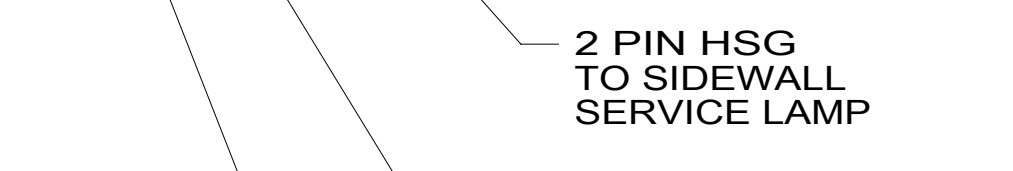
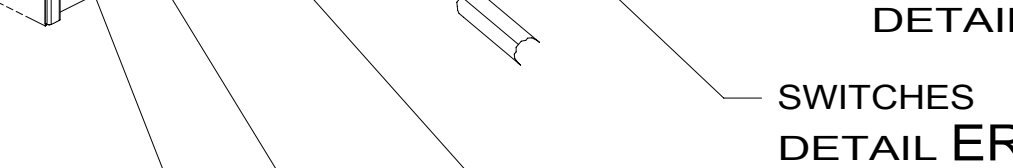
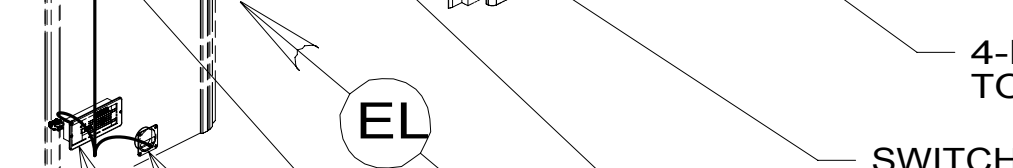
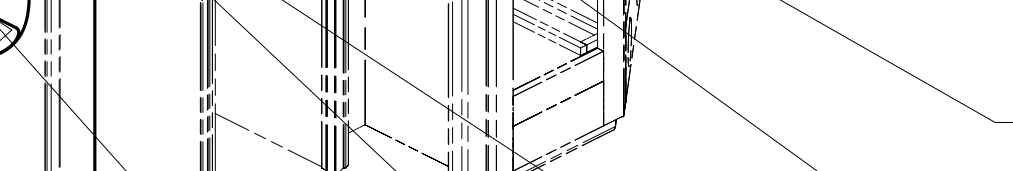
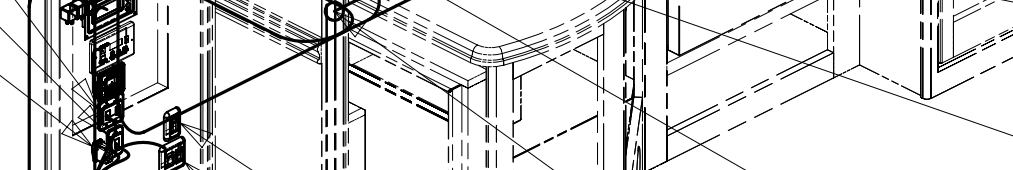
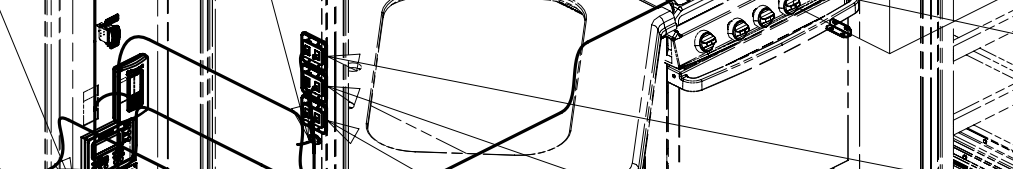
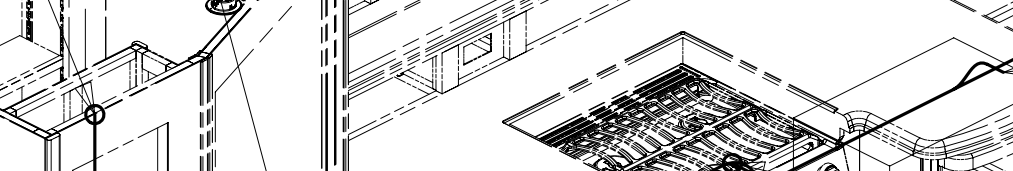
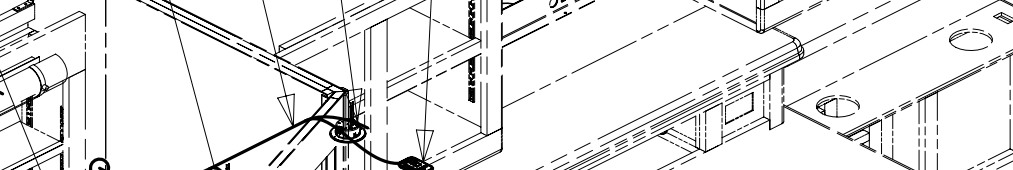
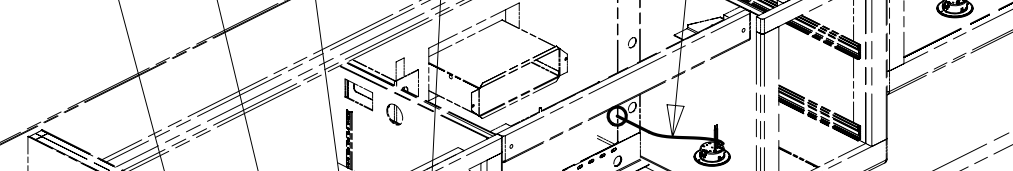
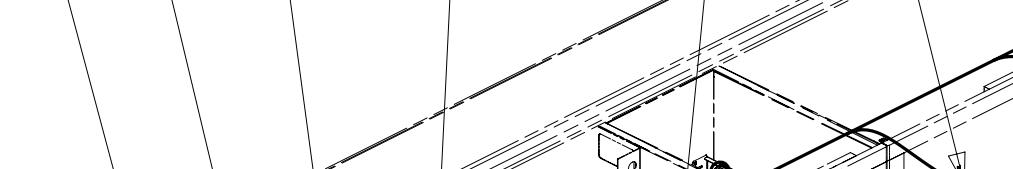
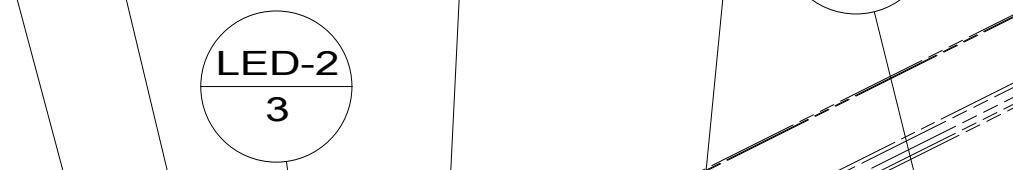
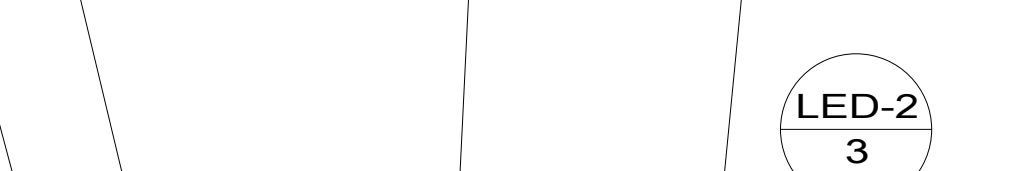
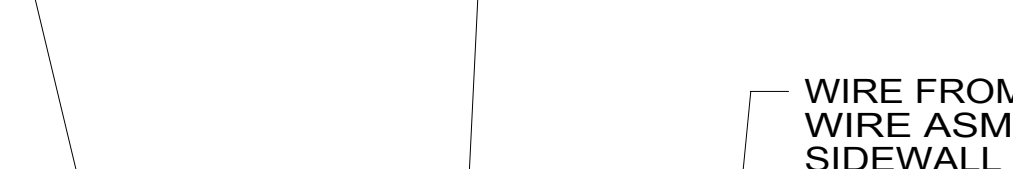
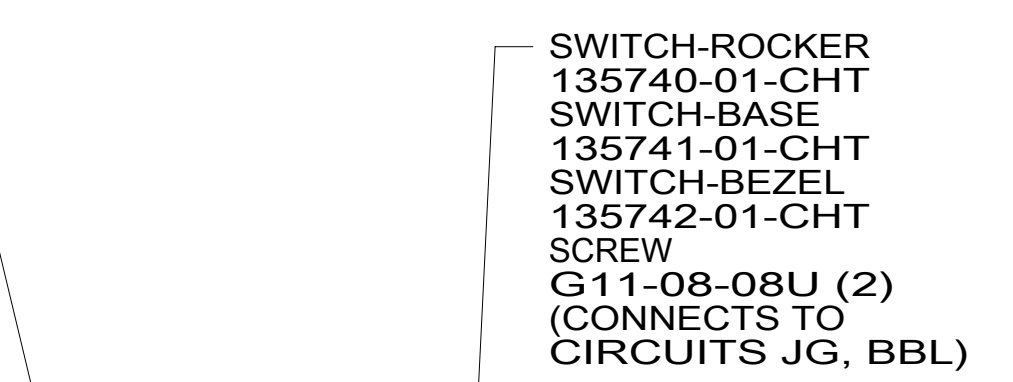
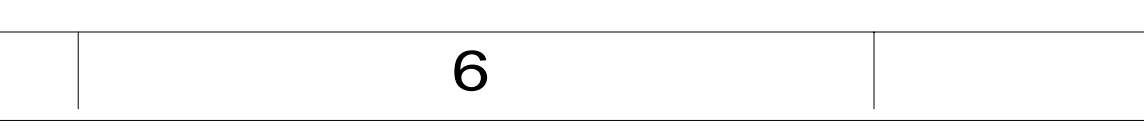
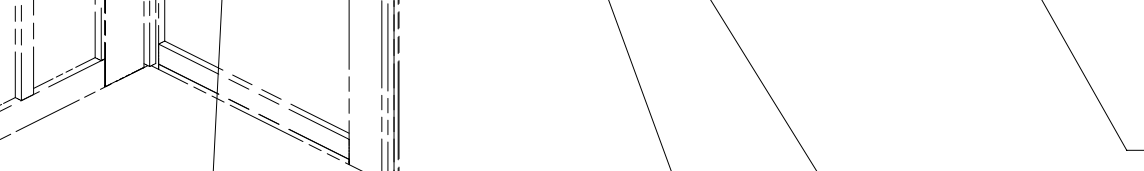
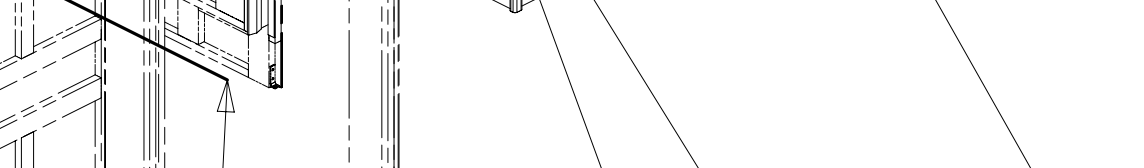
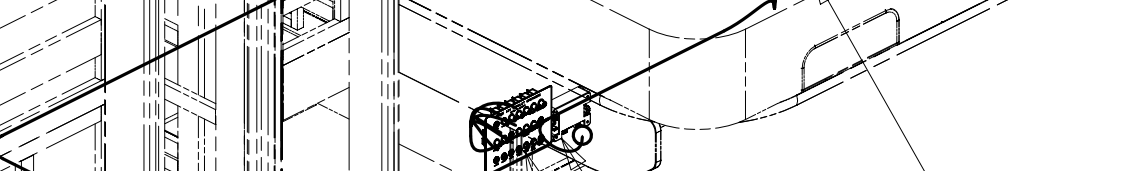
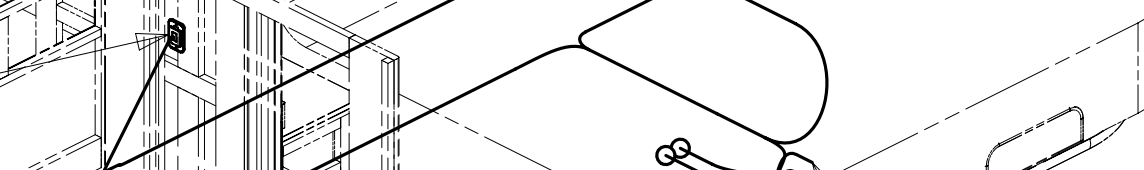
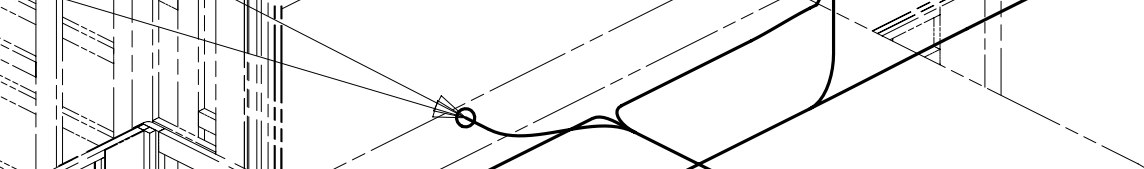
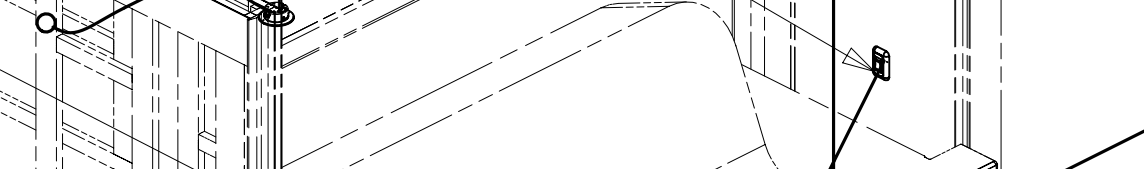
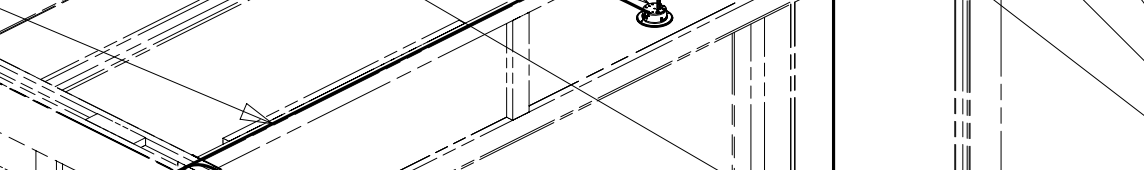
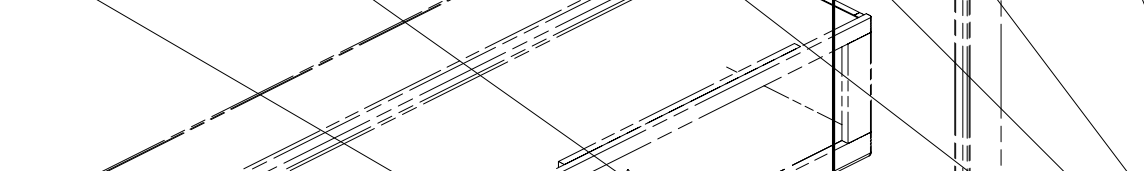
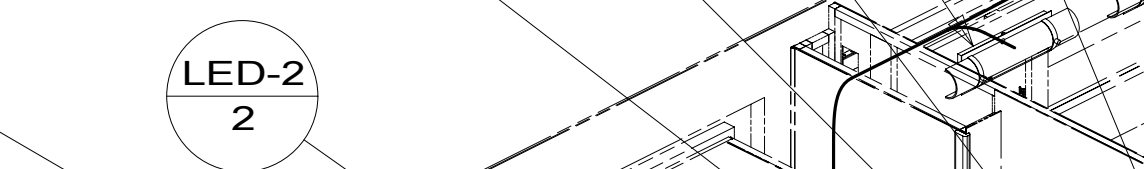
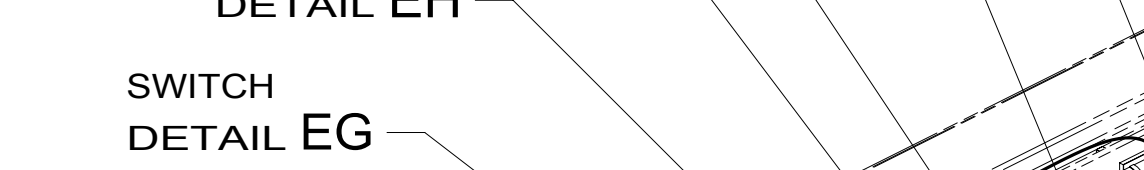
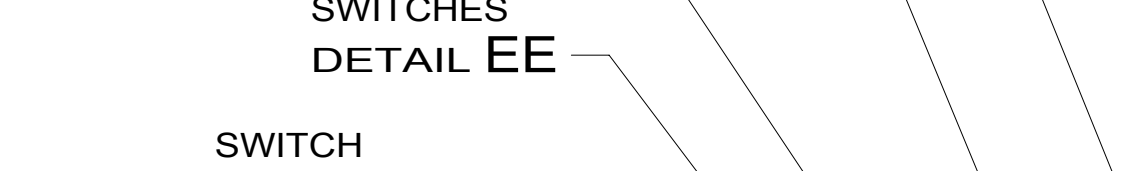
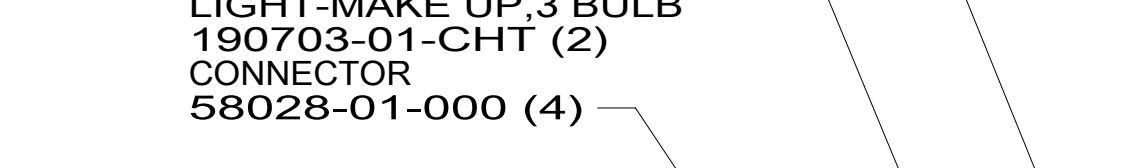
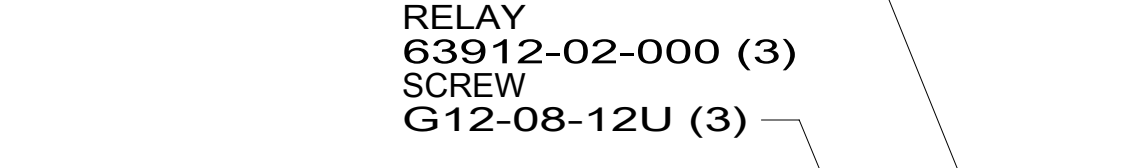
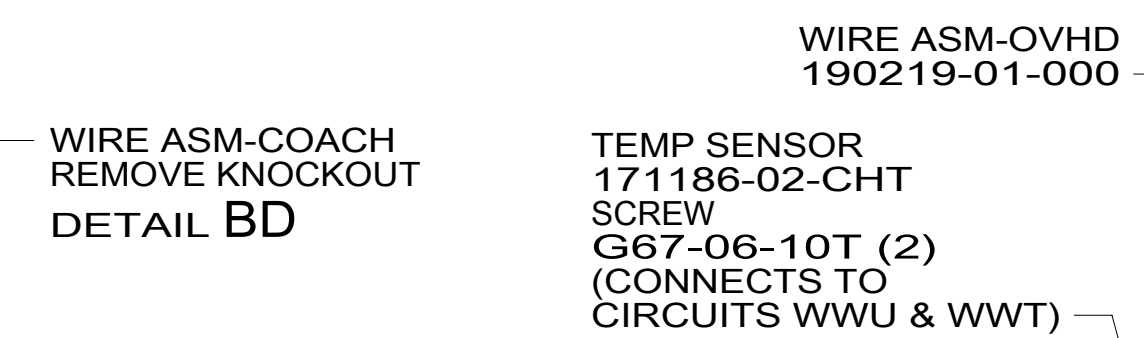


VIEW BC
SSG
SSH



2 SEE LOAD CENTER/ATS ASM FOR ADDITIONAL INFORMATION.

1. AT MINIMUM ALL WIRES TO BE SUPPORTED AND SECURED PER CODE REQUIREMENTS. USE CLAMP 10495 OR 10497 OR WIRE TIE 8343 OR 108046 AND SCREW G67-XX-XXX OR G56-XX-XXX AS APPROPRIATE FOR INSTALLATION.



DETAIL BD

- 1BT WATER HEATER, TANKLESS
- 265 CODES/STANDARDS-CSA/CMVSS
- 1B1 CODES/STANDARDS USA

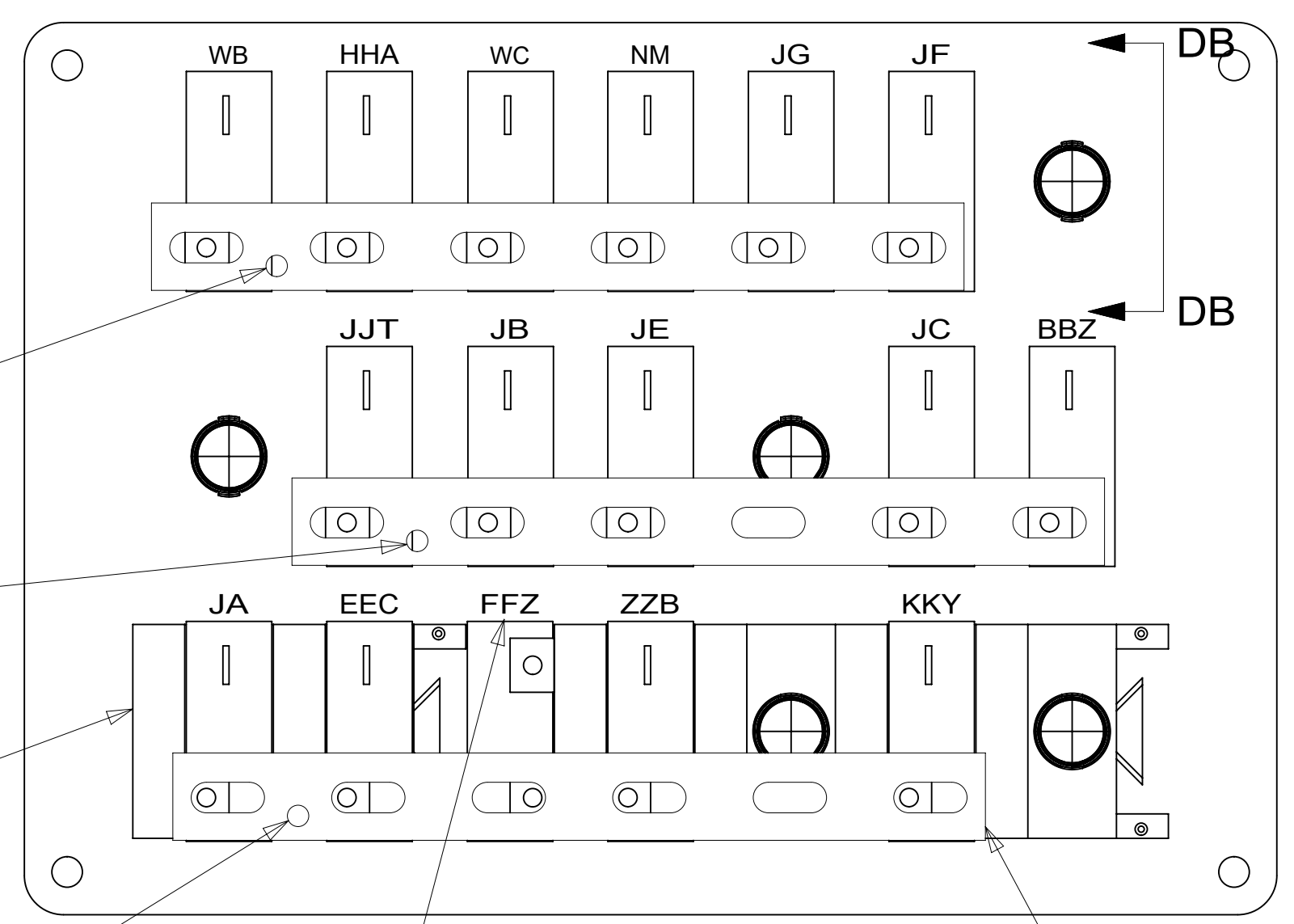
1B1 265

FIRST USED	
15 P42E	
DO NOT SCALE DRAWING	
TITLE: WIRING INSTL-BODY, 12V	
SHEET 2	PART NO 190142 REV

FOR ELECTRICAL TORQUE SPECIFICATIONS SEE DWG NO. 128783-01-000

FOR ELECTRICAL CALLOUTS SEE DWG NO. 121339-01-000

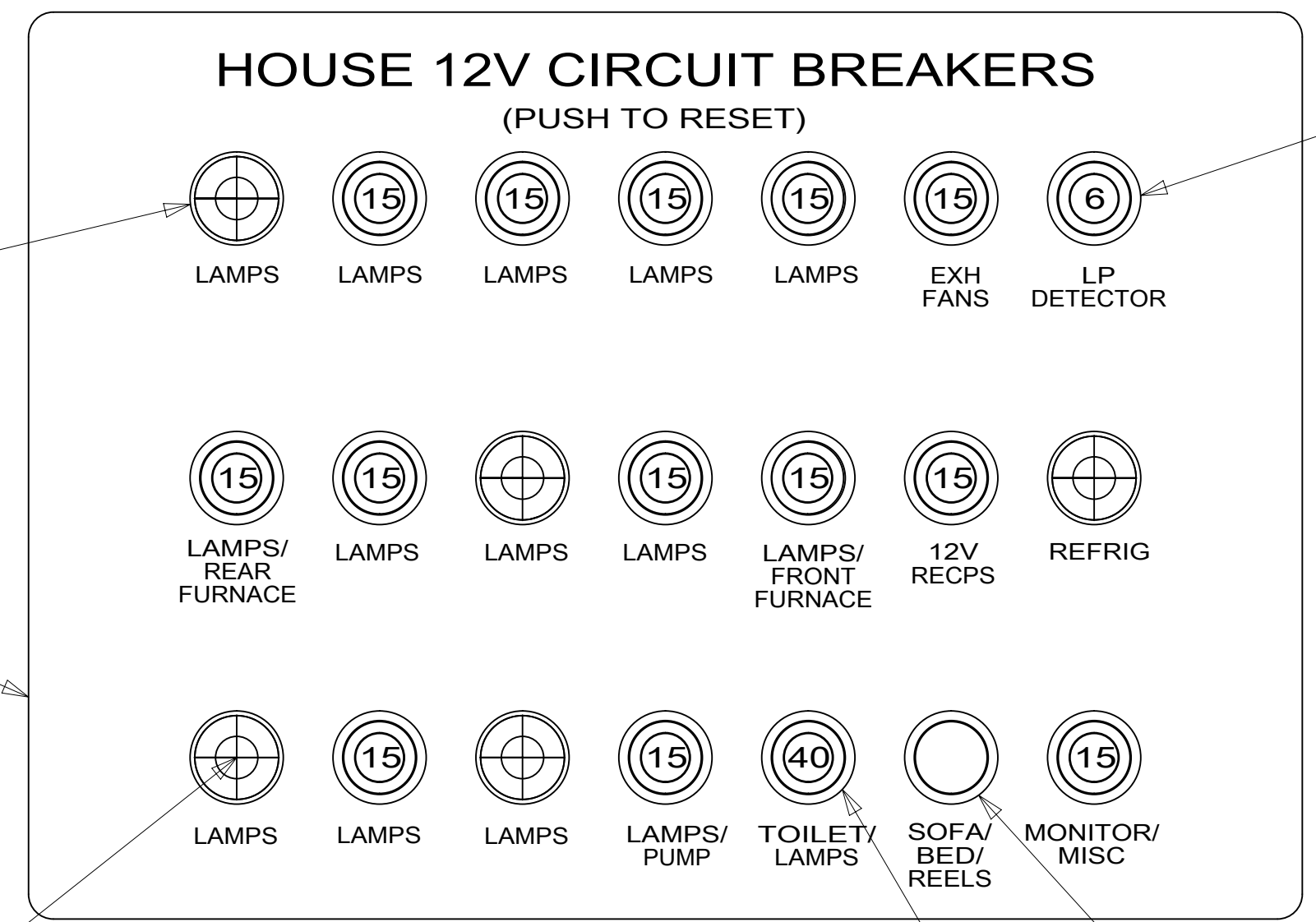
190142



- J 6 BLK FROM WIRE ASM-CHASSIS SCREW G39-08-06B
- K 6 BLK FROM WIRE ASM-CHASSIS SCREW G39-08-06B
- Z 6 BLK FROM WIRE ASM-CHASSIS SCREW G39-08-06B
- SPACER-CIRCUIT BREAKER 141789-01-000 (6)

DETAIL DA (BACK VIEW)

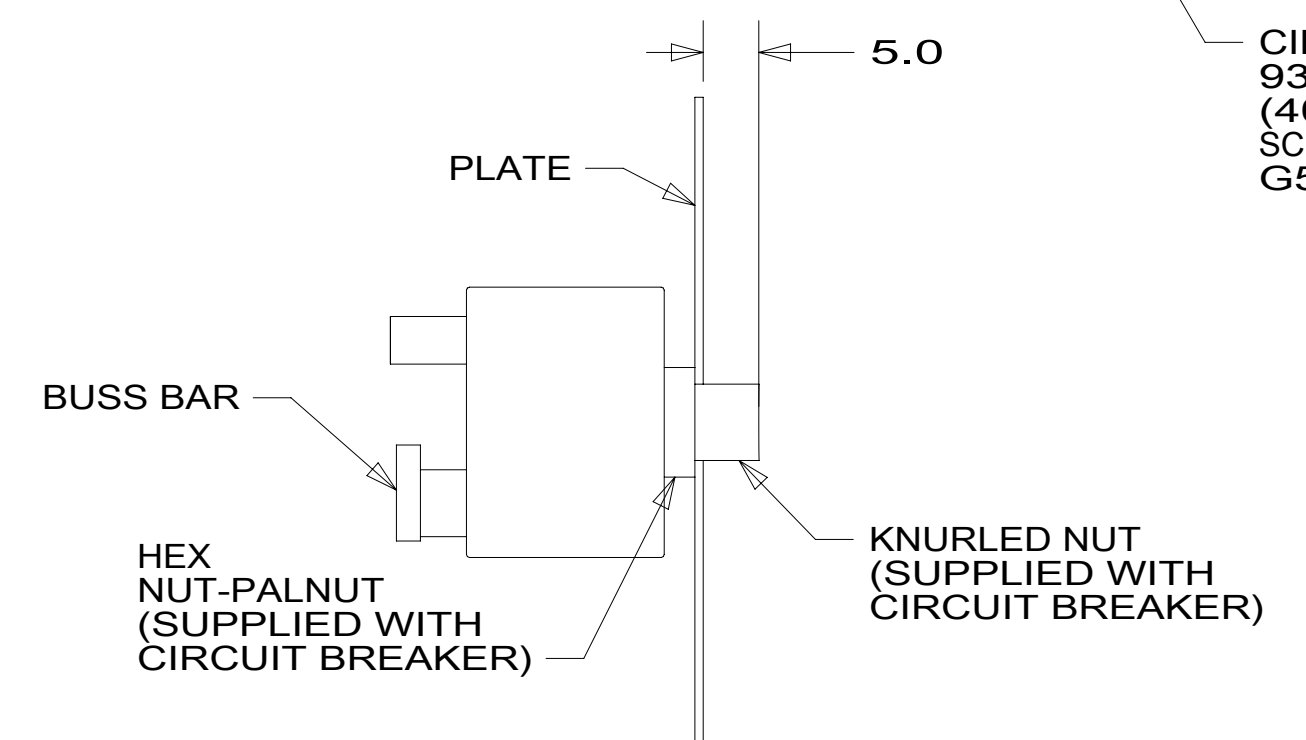
- BUSS BAR 141744-05-000 (3) SCREW G39-08-06B (3)



- CIRCUIT BREAKER 93654-02-000 (13) (15 AMP) SCREW G52-06-04B (13) WASHER OME02B-04-071 (14)
- PLATE 139067-07-CHT LABEL 92547-18-000 SCREW G11-10-12U (4)
- PLUG 081211-06-000 (5)

DETAIL DA (FRONT VIEW)

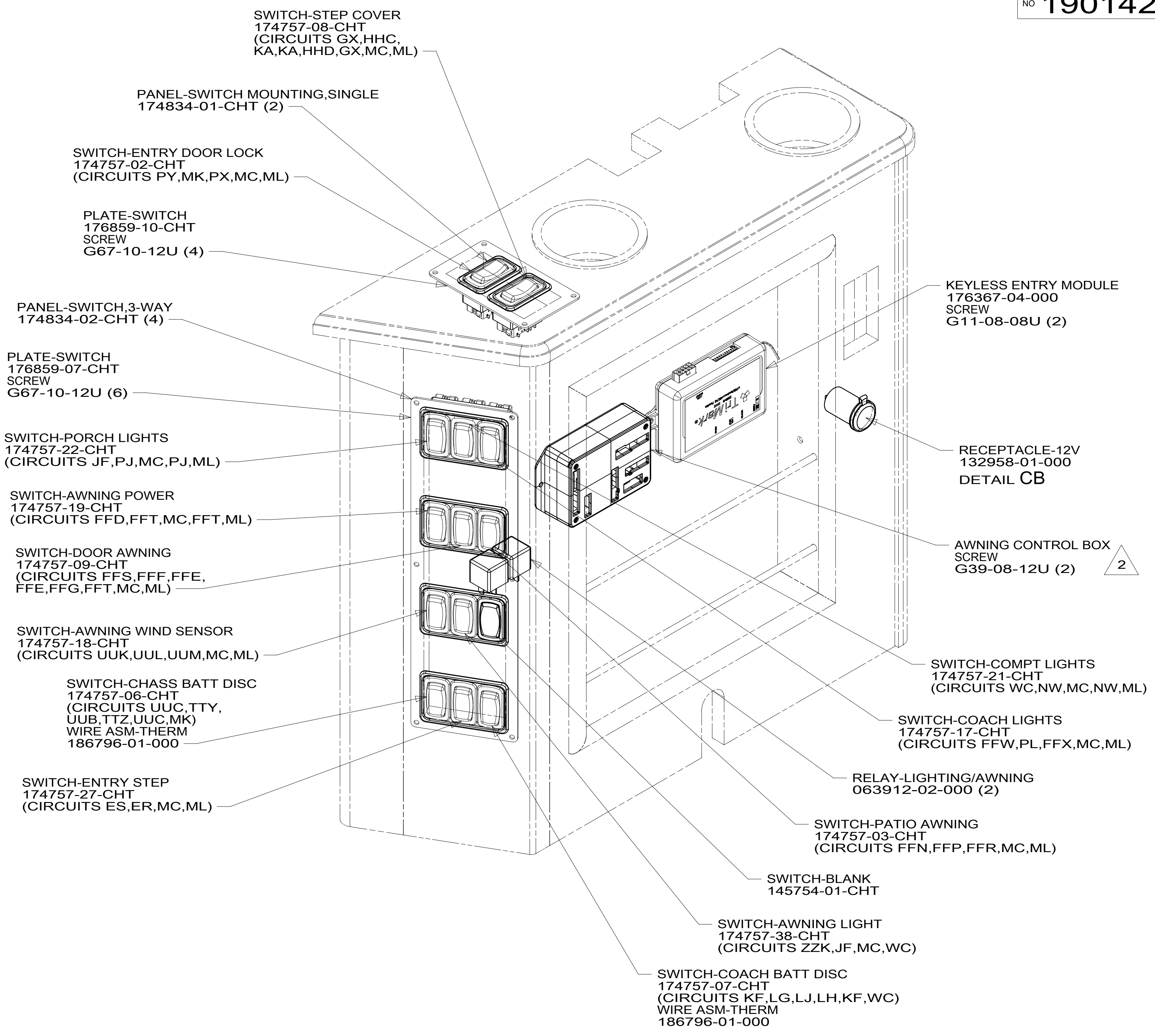
- CIRCUIT BREAKER 93654-01-000 (6 AMP) SCREW G52-06-04B WASHER OME02B-04-071
- BREAKER-SELF RESET 182283-01-000 (20 AMP) SCREW G52-06-04B WASHER OME02B-04-071
- CIRCUIT BREAKER 93655-03-000 (40 AMP) SCREW G52-06-04B



VIEW DB-DB

- 2 SEE AWNING INSTL FOR ADDITIONAL INFORMATION.
- 1 CIRCUIT IS 8 AWG BLACK.

NOTES:



- SWITCH-STEP COVER 174757-08-CHT (CIRCUITS GX,HHC,KA,KA,HHD,GX,MC,ML)
- PANEL-SWITCH MOUNTING,SINGLE 174834-01-CHT (2)
- SWITCH-ENTRY DOOR LOCK 174757-02-CHT (CIRCUITS PY,MK,PX,MC,ML)
- PLATE-SWITCH 176859-10-CHT SCREW G67-10-12U (4)
- PANEL-SWITCH,3-WAY 174834-02-CHT (4)
- PLATE-SWITCH 176859-07-CHT SCREW G67-10-12U (6)
- SWITCH-PORCH LIGHTS 174757-22-CHT (CIRCUITS JF,PJ,MC,PJ,ML)
- SWITCH-AWNING POWER 174757-19-CHT (CIRCUITS FFD,FFT,MC,FFT,ML)
- SWITCH-DOOR AWNING 174757-09-CHT (CIRCUITS FFS,FFF,FFE,FFE,FFG,FFT,MC,ML)
- SWITCH-AWNING WIND SENSOR 174757-18-CHT (CIRCUITS UUK,UUL,UUM,MC,ML)
- SWITCH-CHASS BATT DISC 174757-06-CHT (CIRCUITS UUC,TTY,UUB,TTZ,UUC,MK) WIRE ASM-THERM 186796-01-000
- SWITCH-ENTRY STEP 174757-27-CHT (CIRCUITS ES,ER,MC,ML)
- SWITCH-STEP COVER 174757-08-CHT (CIRCUITS GX,HHC,KA,KA,HHD,GX,MC,ML)
- KEYLESS ENTRY MODULE 176367-04-000 SCREW G11-08-08U (2)
- RECEPTACLE-12V 132958-01-000 DETAIL CB
- AWNING CONTROL BOX SCREW G39-08-12U (2)
- SWITCH-COMPT LIGHTS 174757-21-CHT (CIRCUITS WC,NW,MC,NW,ML)
- SWITCH-COACH LIGHTS 174757-17-CHT (CIRCUITS FFW,PL,FFX,MC,ML)
- RELAY-LIGHTING/AWNING 063912-02-000 (2)
- SWITCH-PATIO AWNING 174757-03-CHT (CIRCUITS FFN,FFP,FFR,MC,ML)
- SWITCH-BLANK 145754-01-CHT
- SWITCH-AWNING LIGHT 174757-38-CHT (CIRCUITS ZZK,JF,MC,WC)
- SWITCH-COACH BATT DISC 174757-07-CHT (CIRCUITS KF,LG,LJ,LH,KF,WC) WIRE ASM-THERM 186796-01-000

DETAIL DC

- 265 CODES/STANDARDS-CSA/CMVSS
- 1B1 CODES/STANDARDS USA
- 1B1 265

FOR ELECTRICAL TORQUE SPECIFICATIONS SEE DWG NO. 128783-01-000

FOR ELECTRICAL CALLOUTS SEE DWG NO. 121339-01-000

FIRST USED

15 P42E

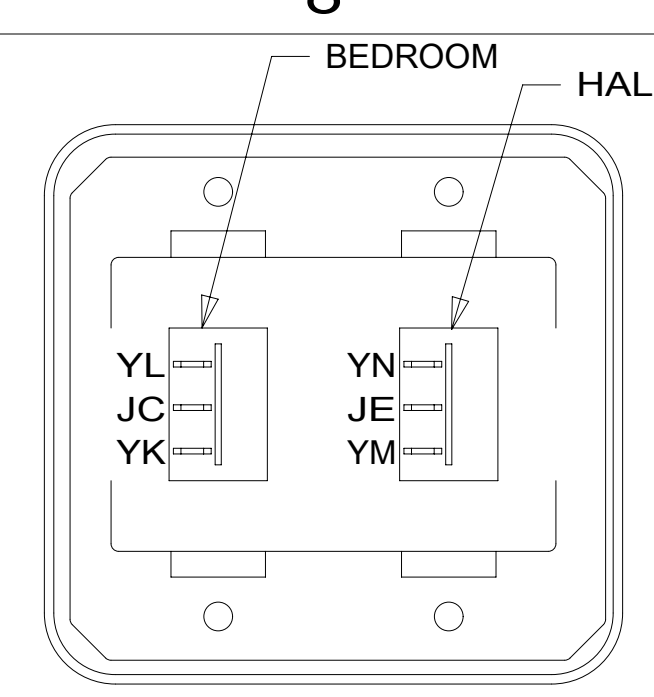
DO NOT SCALE DRAWING

TITLE: **WIRING INSTL-BODY, 12V**

SHEET 4 PART NO. **190142** REV

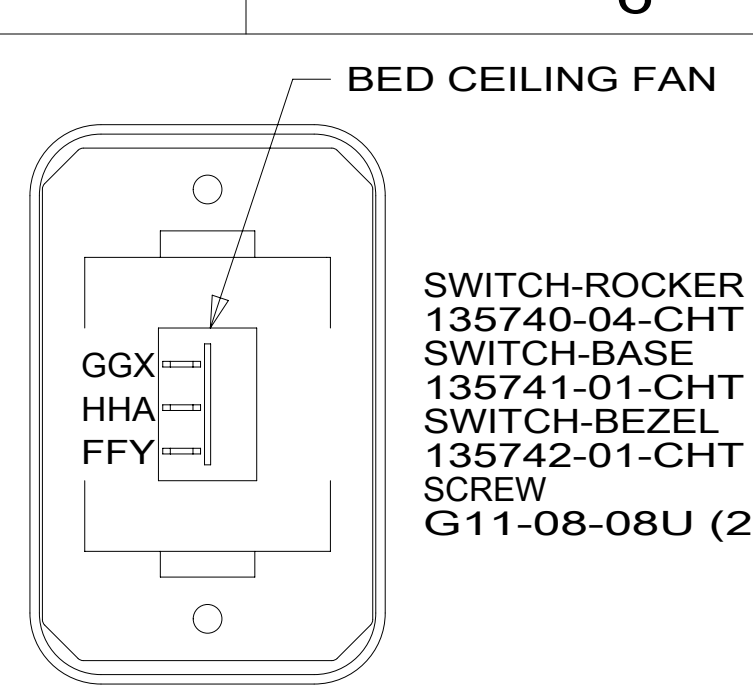
13-May-2015

190142



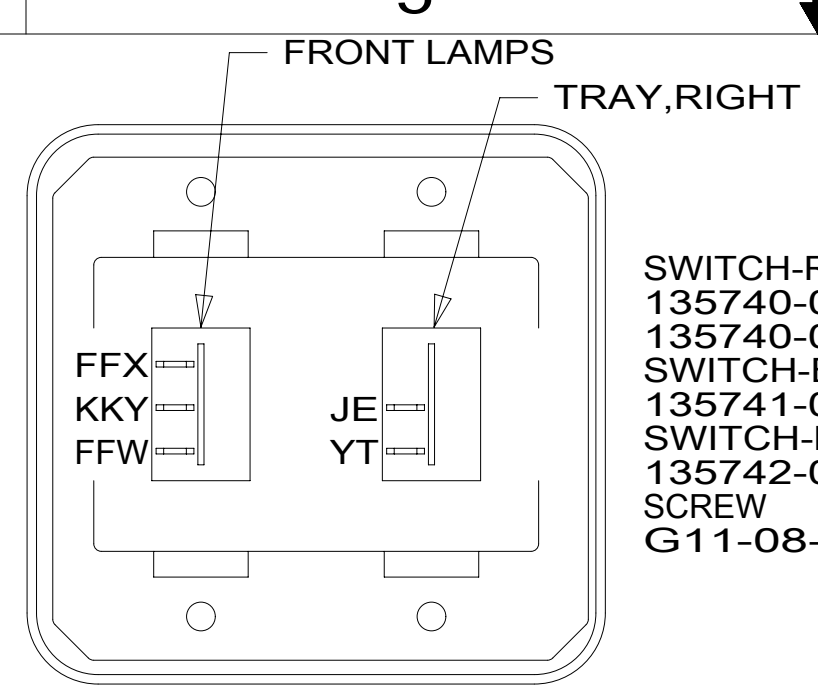
SWITCH-ROCKER
135740-02-CHT (2)
SWITCH-BASE
135741-02-CHT
SWITCH-BEZEL
135742-02-CHT
SCREW
G11-08-08U (4)

DETAIL EA



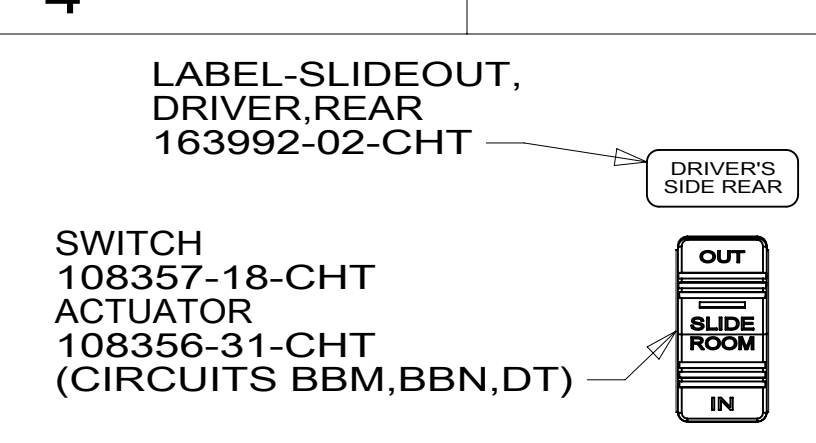
SWITCH-ROCKER
135740-04-CHT
SWITCH-BASE
135741-01-CHT
SWITCH-BEZEL
135742-01-CHT
SCREW
G11-08-08U (2)

DETAIL EF 41Y



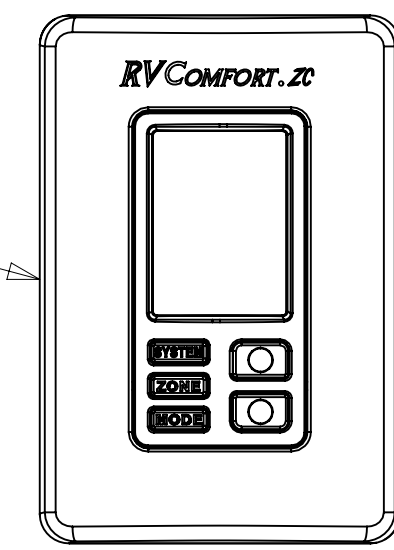
SWITCH-ROCKER
135740-01-CHT
135740-02-CHT
SWITCH-BASE
135741-02-CHT
SWITCH-BEZEL
135742-02-CHT
SCREW
G11-08-08U (4)

DETAIL EK

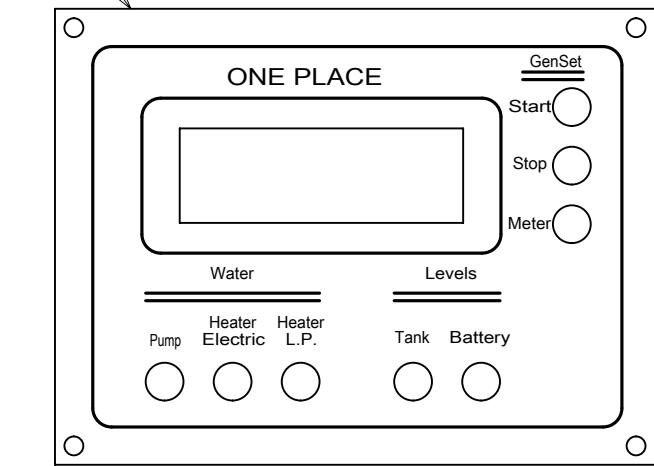


SWITCH
108357-18-CHT
ACTUATOR
108356-31-CHT
(CIRCUITS BBM,BBN,DT)

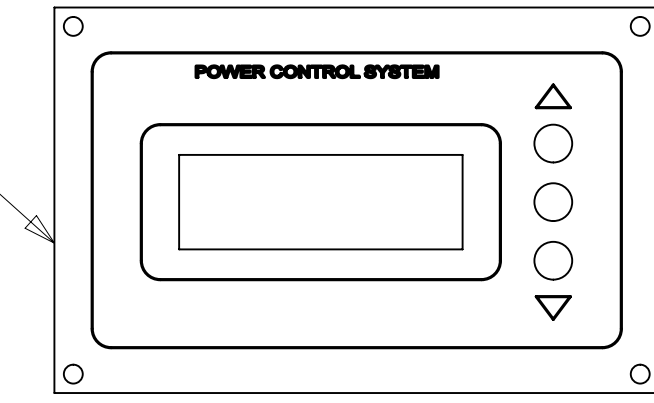
THERMOSTAT-ZONE,2-STAGE
171186-05-CHT
SCREW
G11-08-08U (2)
RELAY
63912-02-000 (2)



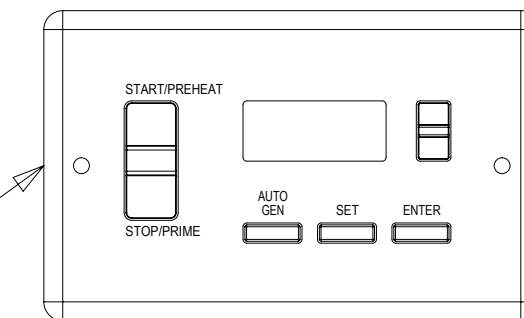
MONITOR-PANEL
175724-02-000
175724-05-000
SCREW
G11-08-08U (4)



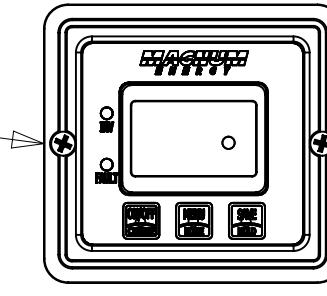
MONITOR-PANEL EMS
174384-06-000
SCREW
G11-08-08U (4)



MODULE-AUTO
GENERATOR START
158425-01-000
SCREW
G11-08-08U (2)



REMOTE PANEL
175385-02-000
SCREW
G11-08-08U (2)



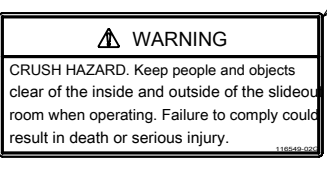
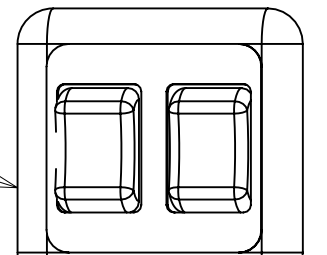
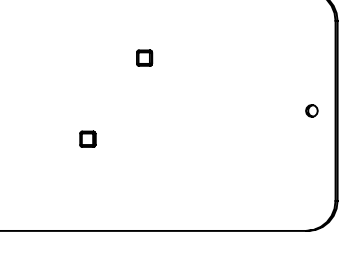
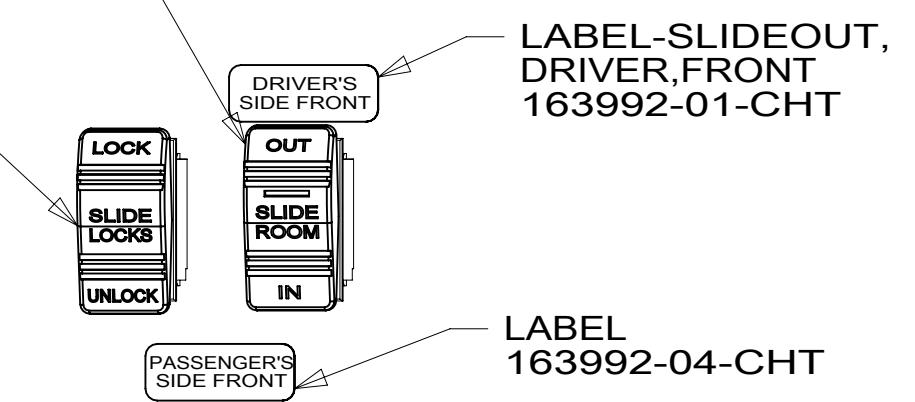
DETAIL EL

SWITCH
108357-18-CHT
ACTUATOR
108356-31-CHT
(CIRCUITS DR,DU,DT)

SWITCH
108357-06-000
ACTUATOR
108356-25-CHT
CIRCUITS
PPP,PPV,PPR,PPU

SWITCH ASM-SLIDEOUT
171341-01-000
SCREW
76790-05-000 (2)
CIRCUITS
SSN,HHF,NNN,
NNP,HHE,NNR,
WWR,WWP

SWITCH
DETAIL EP

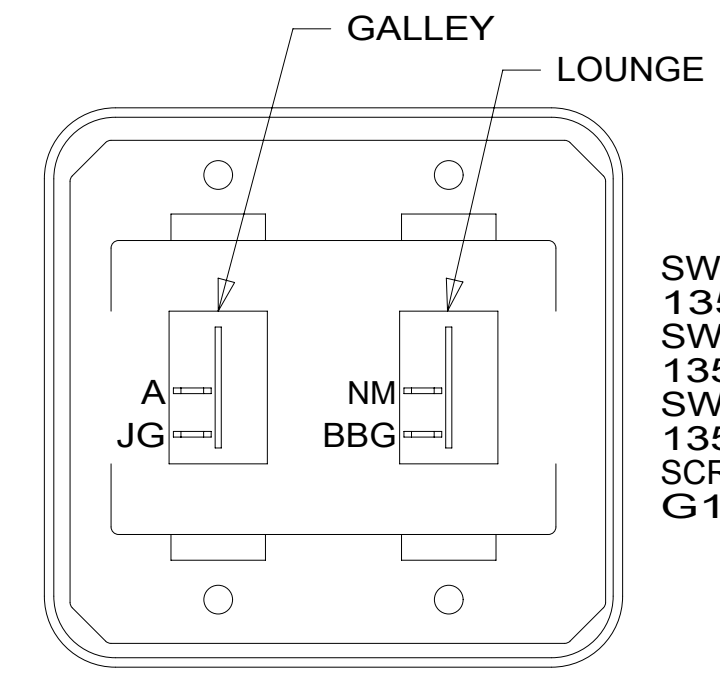


DETAIL EB

LABEL-SLIDEOUT,
DRIVER,FRONT
163992-01-CHT

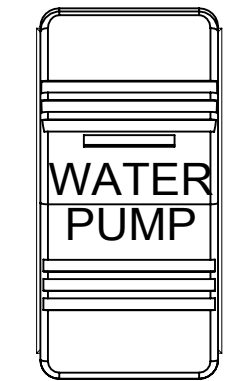
LABEL
163992-04-CHT

LABEL
116549-02-000



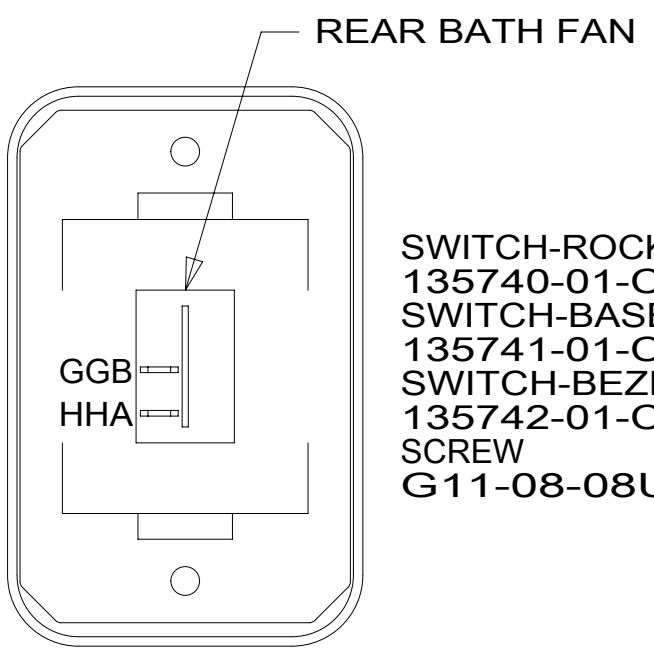
SWITCH-ROCKER
135740-01-CHT (2)
SWITCH-BASE
135741-02-CHT
SWITCH-BEZEL
135742-02-CHT
SCREW
G11-08-08U (4)

DETAIL EC



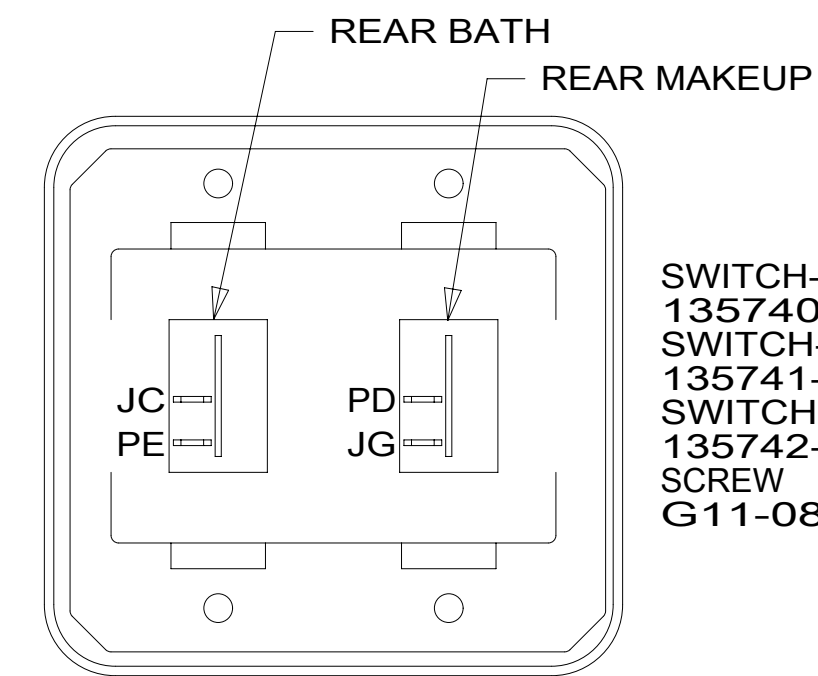
SWITCH-PUMP
108357-21-000
ACTUATOR
108356-23-CHT
SCREW
G11-06-10U (2)

DETAIL EG
(2 PLACES)



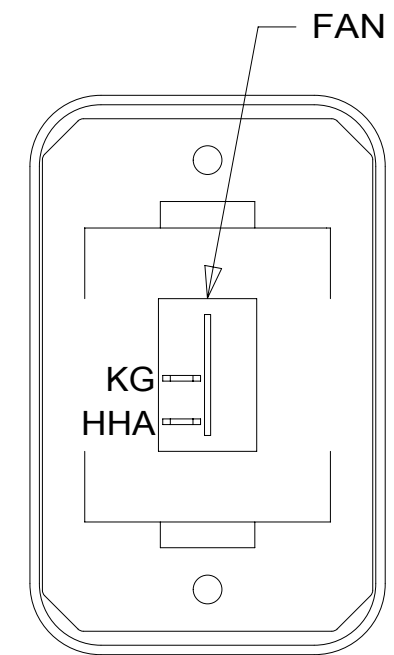
SWITCH-ROCKER
135740-01-CHT
SWITCH-BASE
135741-01-CHT
SWITCH-BEZEL
135742-01-CHT
SCREW
G11-08-08U (2)

DETAIL EM



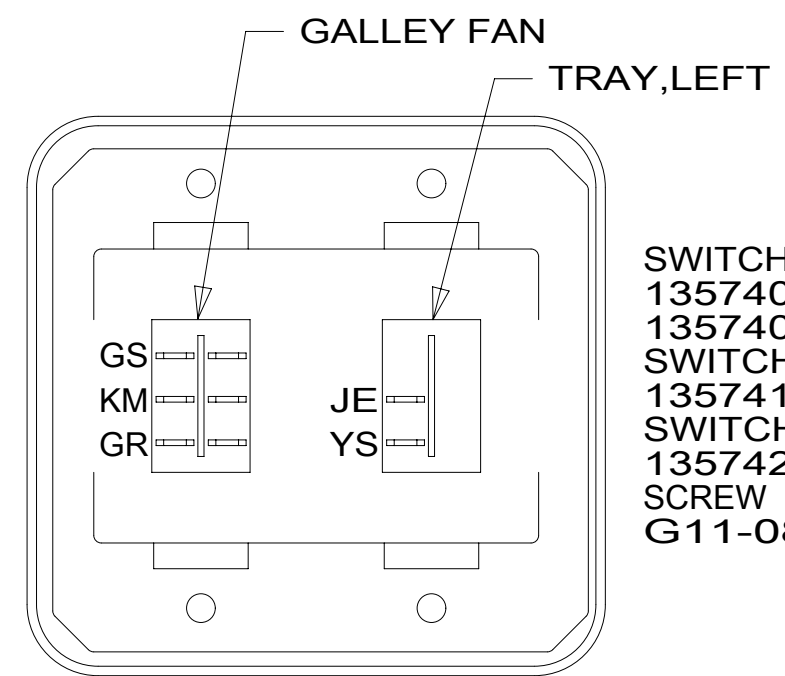
SWITCH-ROCKER
135740-01-CHT (2)
SWITCH-BASE
135741-02-CHT
SWITCH-BEZEL
135742-02-CHT
SCREW
G11-08-08U (4)

DETAIL ED



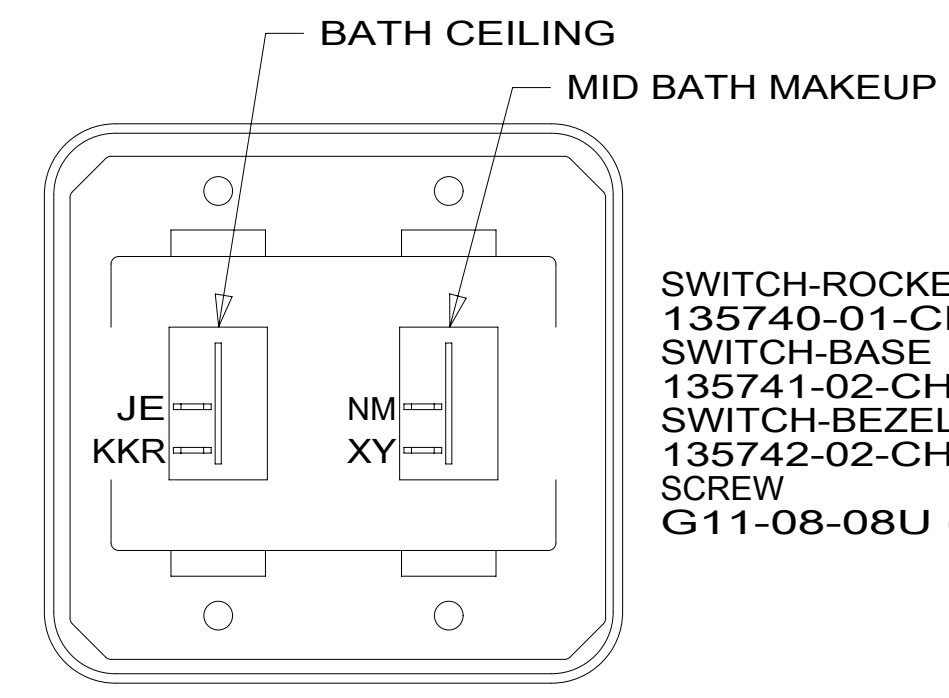
SWITCH-ROCKER
135740-01-CHT
SWITCH-BASE
135741-01-CHT
SWITCH-BEZEL
135742-01-CHT
SCREW
G11-08-08U (2)

DETAIL EH



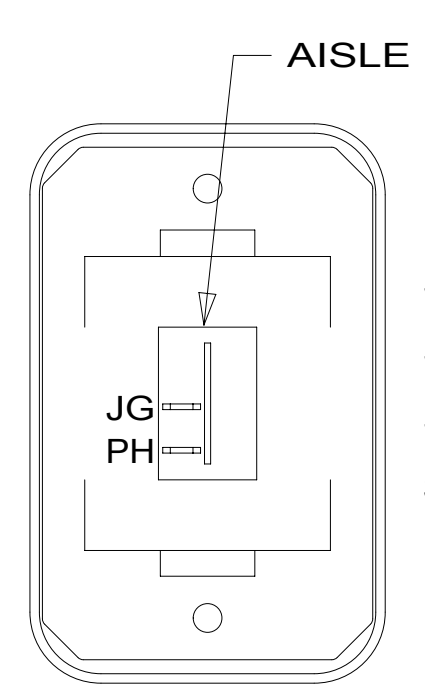
SWITCH-ROCKER
135740-01-CHT
135740-03-CHT
SWITCH-BASE
135741-02-CHT
SWITCH-BEZEL
135742-02-CHT
SCREW
G11-08-08U (4)

DETAIL EN



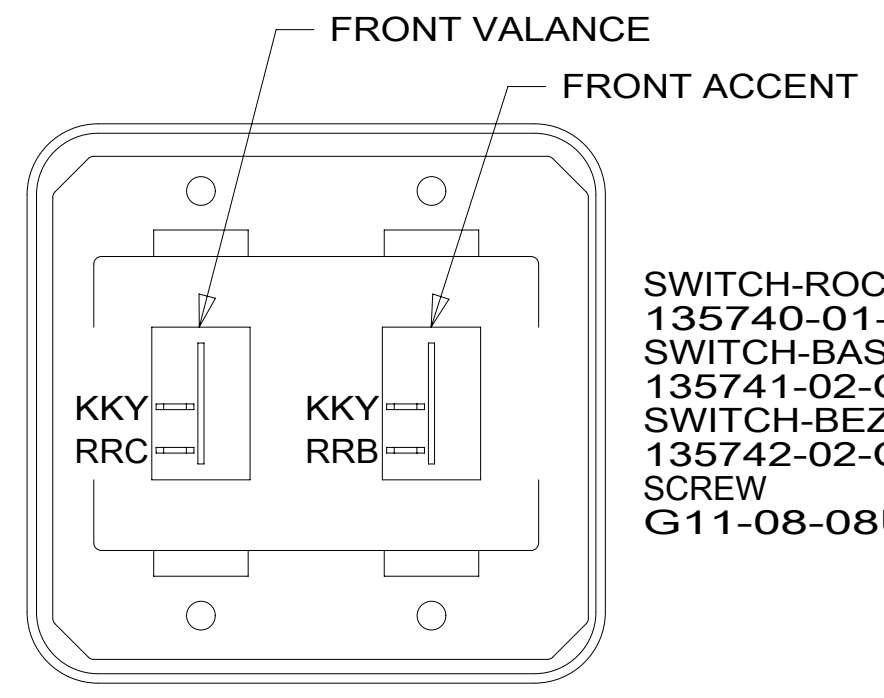
SWITCH-ROCKER
135740-01-CHT (2)
SWITCH-BASE
135741-02-CHT
SWITCH-BEZEL
135742-02-CHT
SCREW
G11-08-08U (4)

DETAIL EE



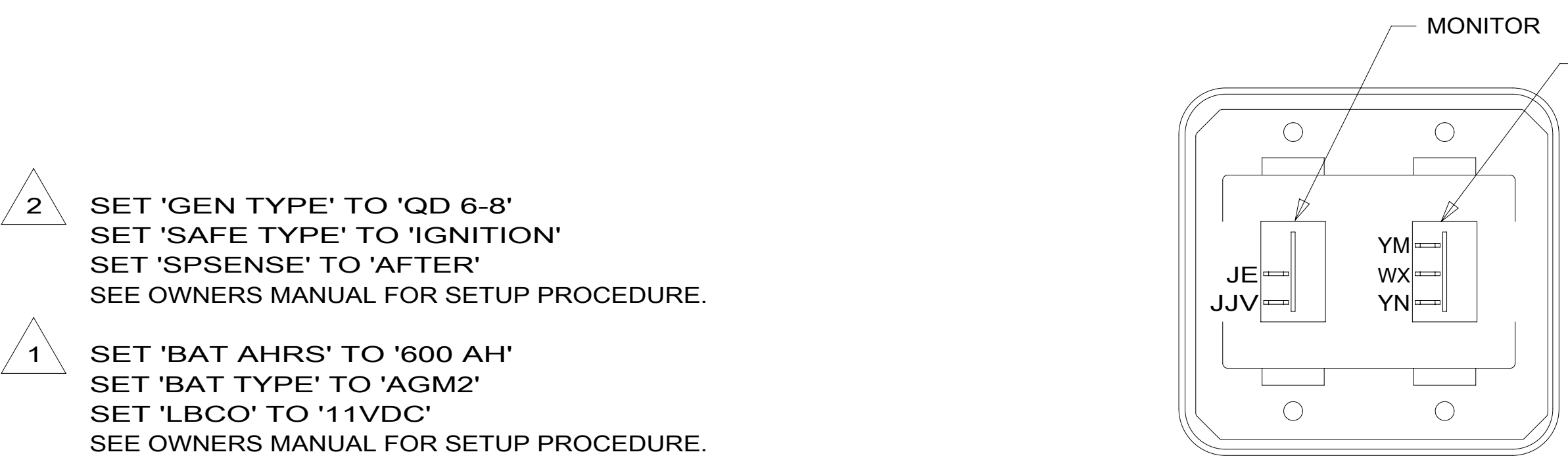
SWITCH-ROCKER
135740-01-CHT
SWITCH-BASE
135741-01-CHT
SWITCH-BEZEL
135742-01-CHT
SCREW
G11-08-08U (2)

DETAIL EJ



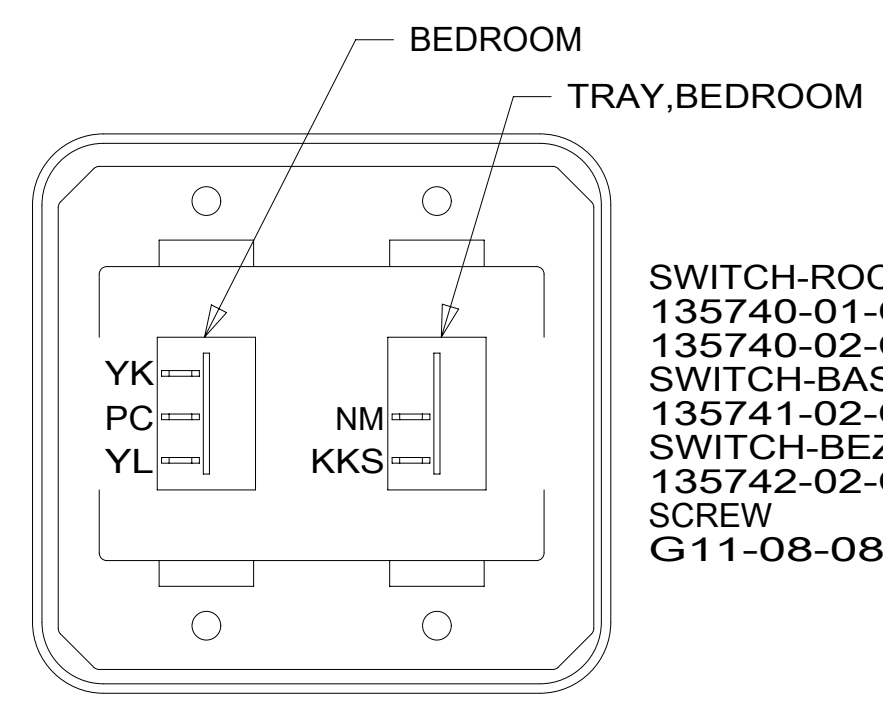
SWITCH-ROCKER
135740-01-CHT (2)
SWITCH-BASE
135741-02-CHT
SWITCH-BEZEL
135742-02-CHT
SCREW
G11-08-08U (4)

DETAIL EP



SWITCH-ROCKER
135740-01-CHT
135740-02-CHT
SWITCH-BASE
135741-02-CHT
SWITCH-BEZEL
135742-02-CHT
SCREW
G11-08-08U (4)

DETAIL ER



SWITCH-ROCKER
135740-01-CHT
135740-02-CHT
SWITCH-BASE
135741-02-CHT
SWITCH-BEZEL
135742-02-CHT
SCREW
G11-08-08U (4)

DETAIL ES

2 SET 'GEN TYPE' TO 'QD 6-8'
SET 'SAFE TYPE' TO 'IGNITION'
SET 'SPSENSE' TO 'AFTER'
SEE OWNERS MANUAL FOR SETUP PROCEDURE.

1 SET 'BAT AHRS' TO '600 AH'
SET 'BAT TYPE' TO 'AGM2'
SET 'LBCO' TO '11VDC'
SEE OWNERS MANUAL FOR SETUP PROCEDURE.

NOTES:

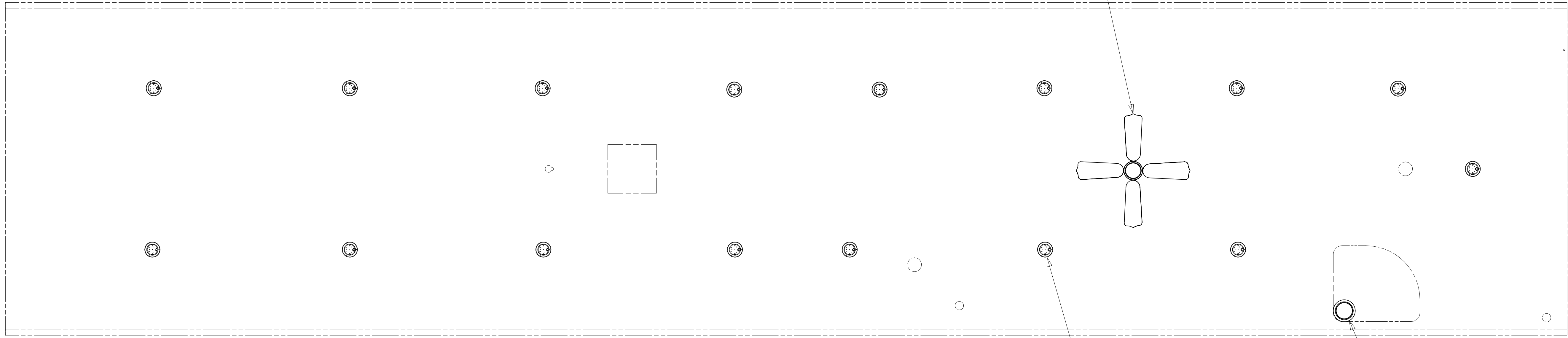
FOR ELECTRICAL
TORQUE
SPECIFICATIONS
SEE DWG NO.
128783-01-000

FOR
ELECTRICAL
CALLOUTS
SEE DWG NO.
121339-01-000

- 1B2 WTR HTR-10GAL/ELEC/LP/MTRAIID
- 1BT WATER HEATER, TANKLESS
- 41Y FAN - CEILING,BEDROOM
- 265 CODES/STANDARDS-CSA/CMVSS
- 1B1 CODES/STANDARDS USA

1B1	265
FIRST USED	
15 P42E	
DO NOT SCALE DRAWING	
TITLE: WIRING INSTL-BODY, 12V	
SHEET 5	PART NO 190142 REV

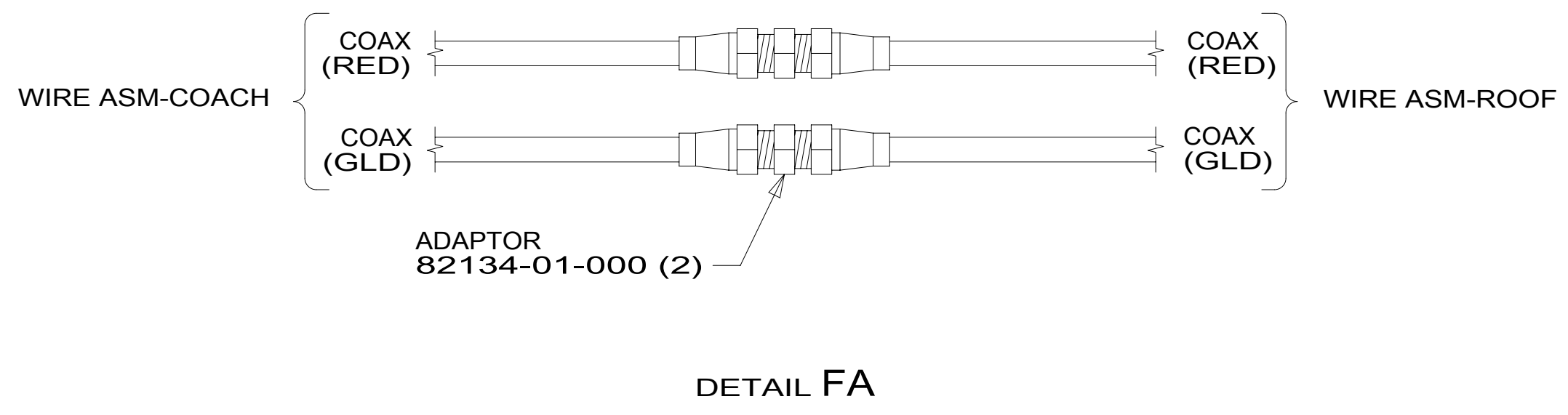
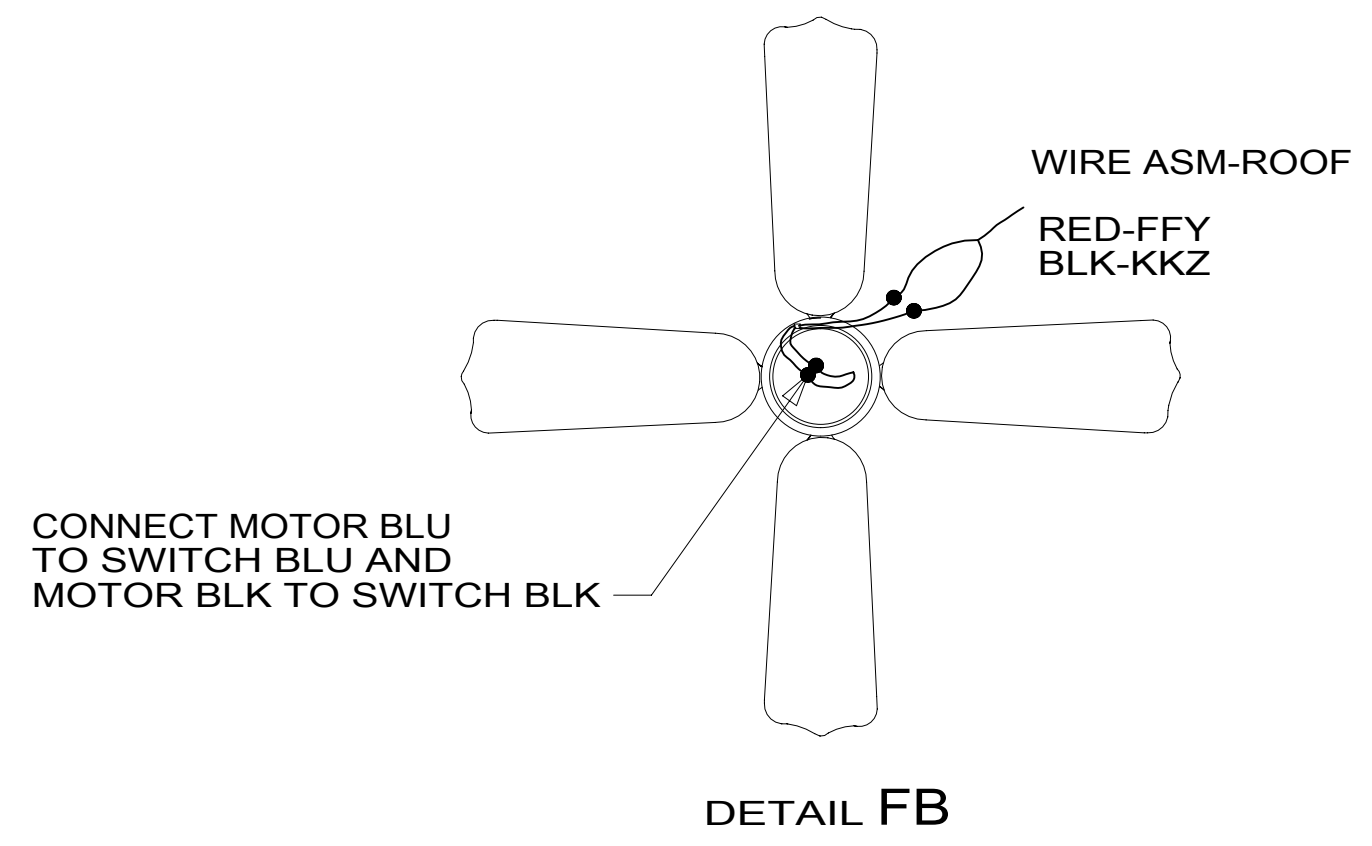
FAN
139134-01-CHT
SCREW
G11-10-16B (3)
CONNECTOR
58028-01-000 (2)
DETAIL FB



41Y 2 1

LED-4
16

LSH-3



- 41Y FAN - CEILING,BEDROOM
- 265 CODES/STANDARDS-CSA/CMVSS
- 1B1 CODES/STANDARDS USA

1B1 265

- 2 APPLY LOCTITE P/N 62917-06-000 TO FAN BLADE MOUNTING NUT THREADS.
- 1 CENTER FAN OVER 25MM HOLE IN ROOF.

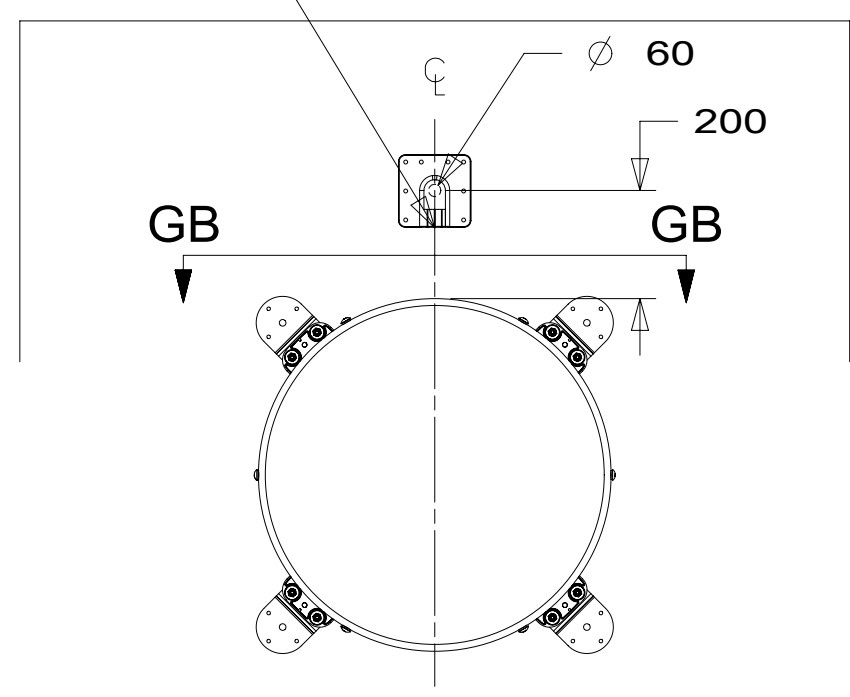
FOR ELECTRICAL TORQUE SPECIFICATIONS SEE DWG NO. 128783-01-000

FOR ELECTRICAL CALLOUTS SEE DWG NO. 121339-01-000

FIRST USED		
15 P42E		
DO NOT SCALE DRAWING		
TITLE: WIRING INSTL-BODY, 12V		
SHEET 6	PART NO 190142	REV
1 13-May-2015		

190142

THE SATELLITE DISH WIRE CONNECTIONS ARE TO BE PLACED ON THE CENTERLINE OF THE MOTORHOME FACING FORWARD

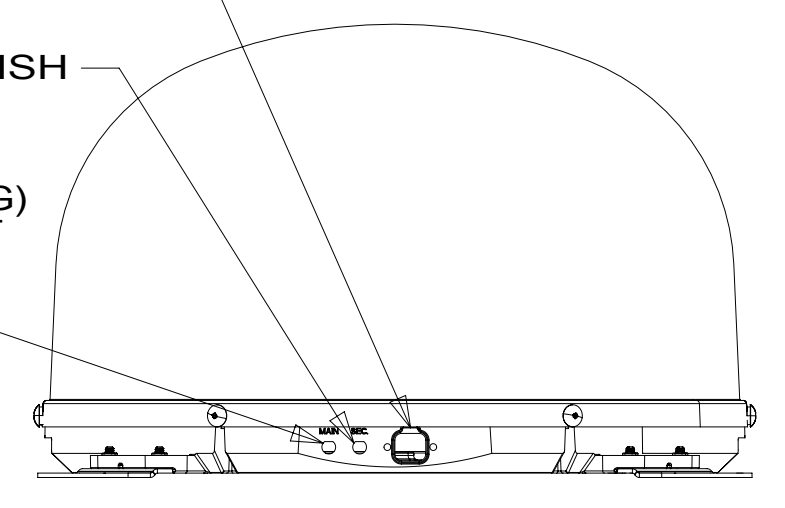


DETAIL GA 2

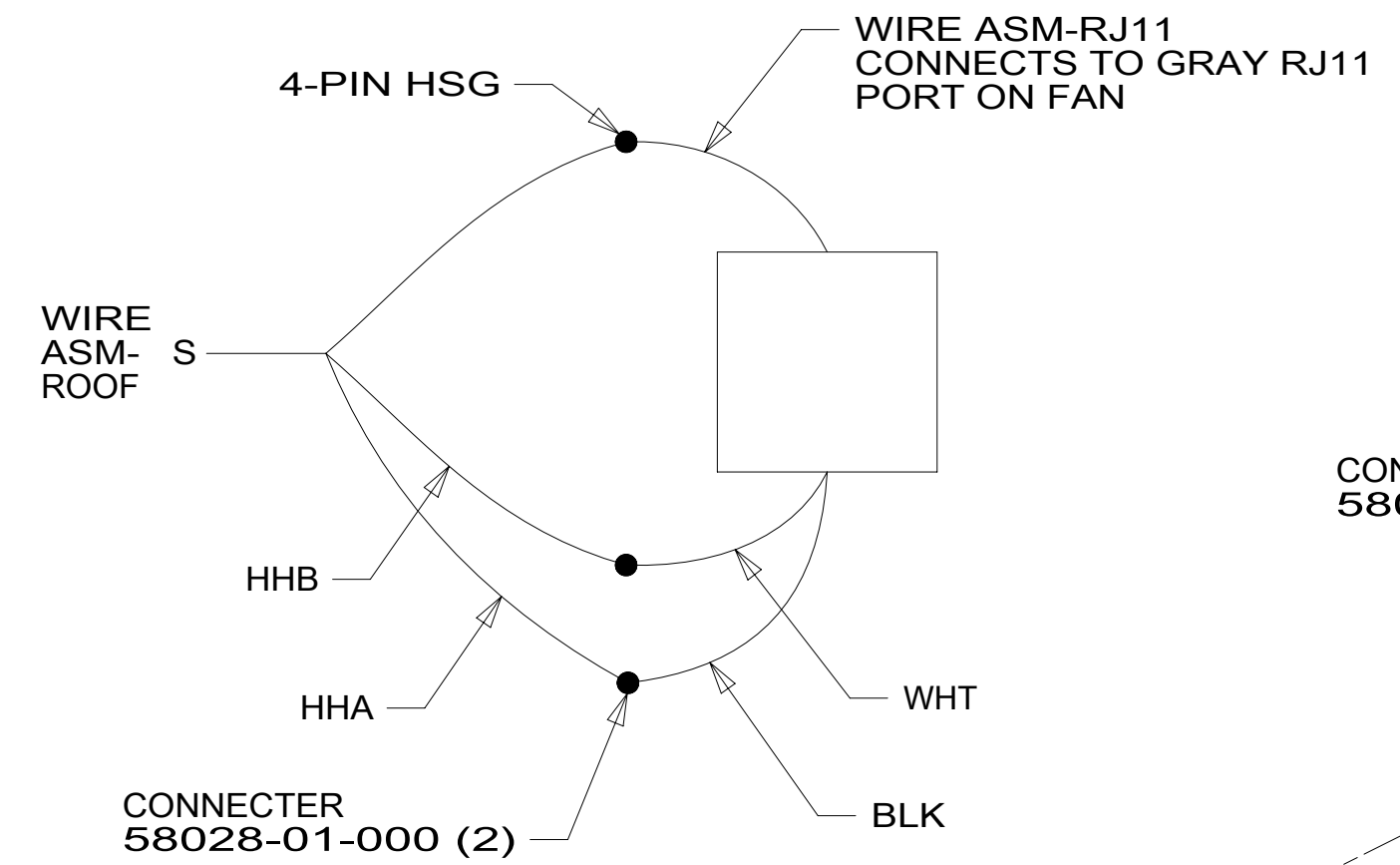
CONNECT 2-PIN HOUSING FROM ROOF ASM TO SATELLITE DISH HERE AND ADD CONVOLUTED TUBING

CONNECT CABLE ASM COAX (ORG-2) FROM ROOF ASM TO SEC INPUT ON SATELLITE DISH

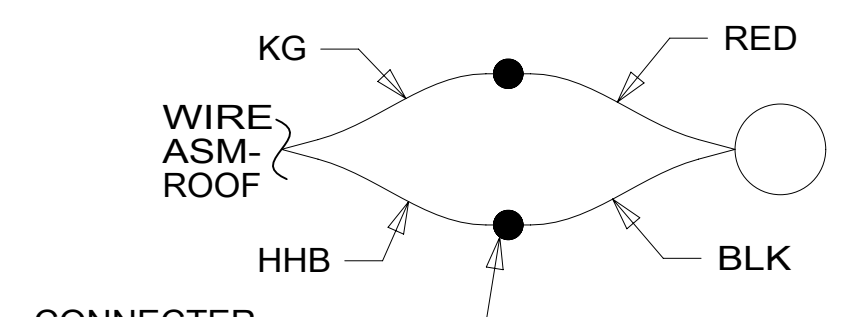
CONNECT CABLE ASM COAX (ORG) FROM ROOF ASM TO MAIN INPUT ON SATELLITE DISH



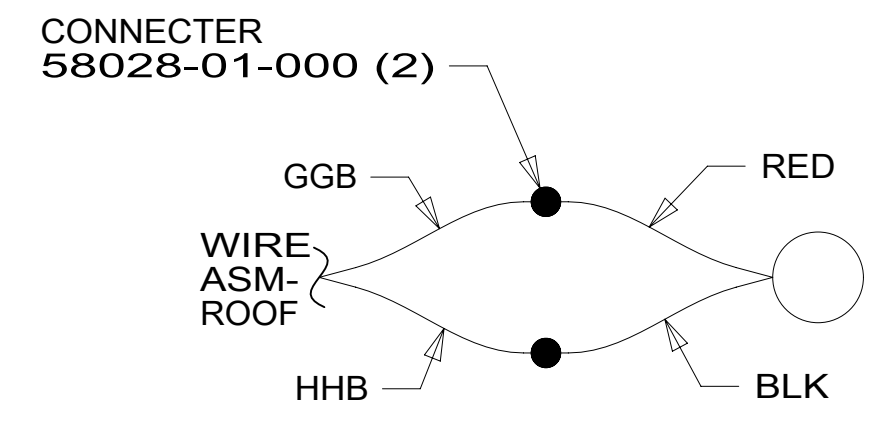
VIEW GB-GB



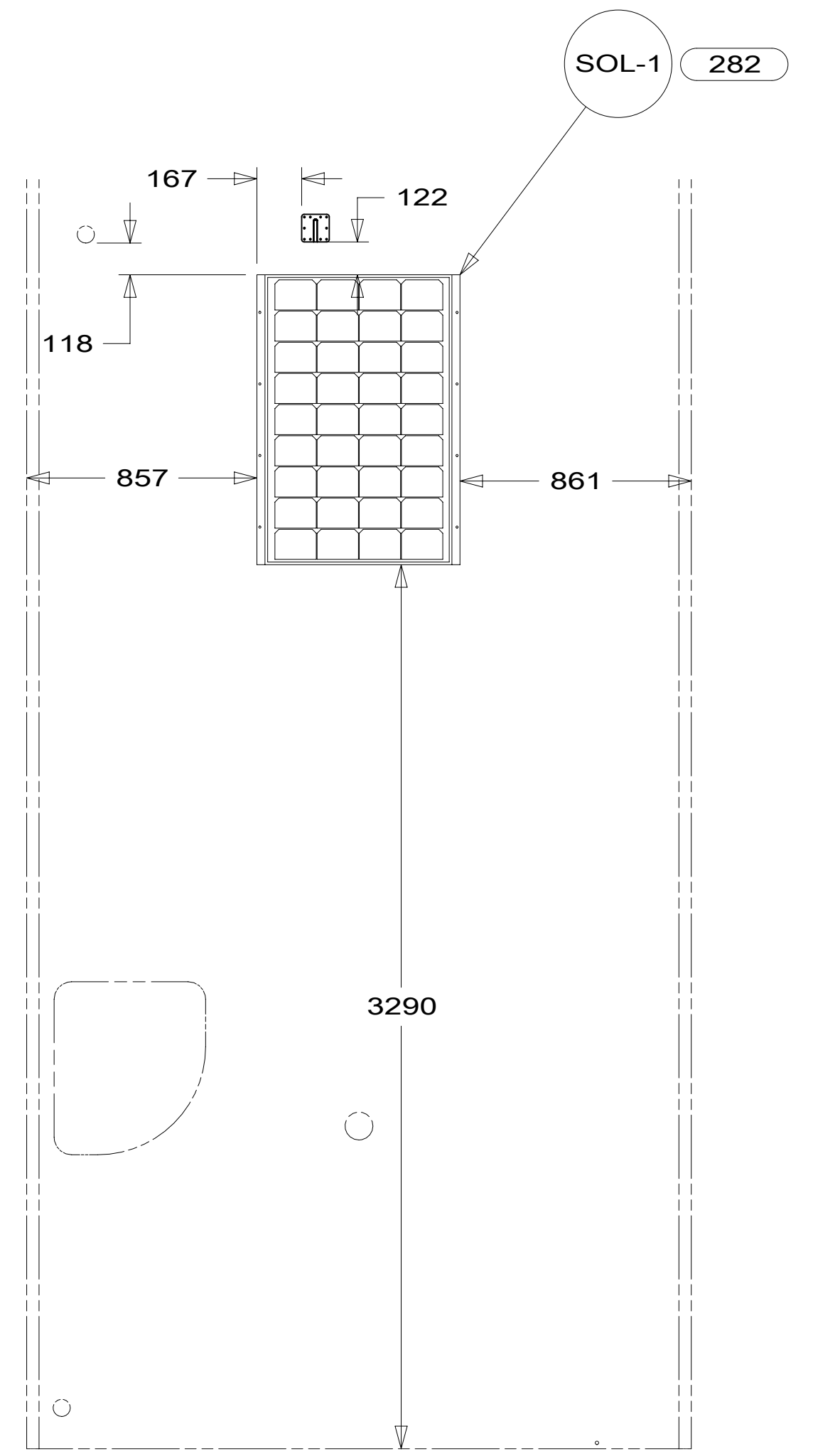
DETAIL GF



DETAIL GG

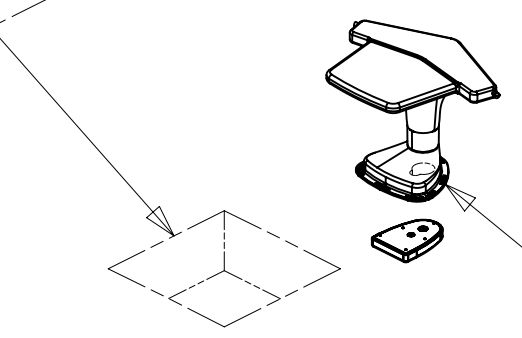


DETAIL GH

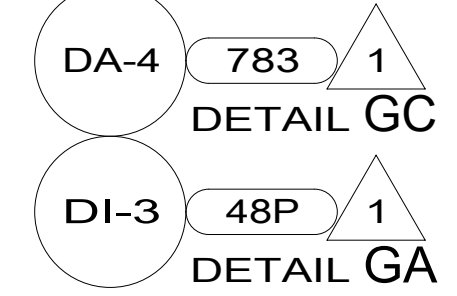
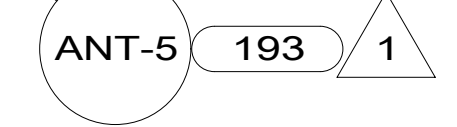


DETAIL GJ

WIRING DETAIL GF



WIRING DETAIL GG

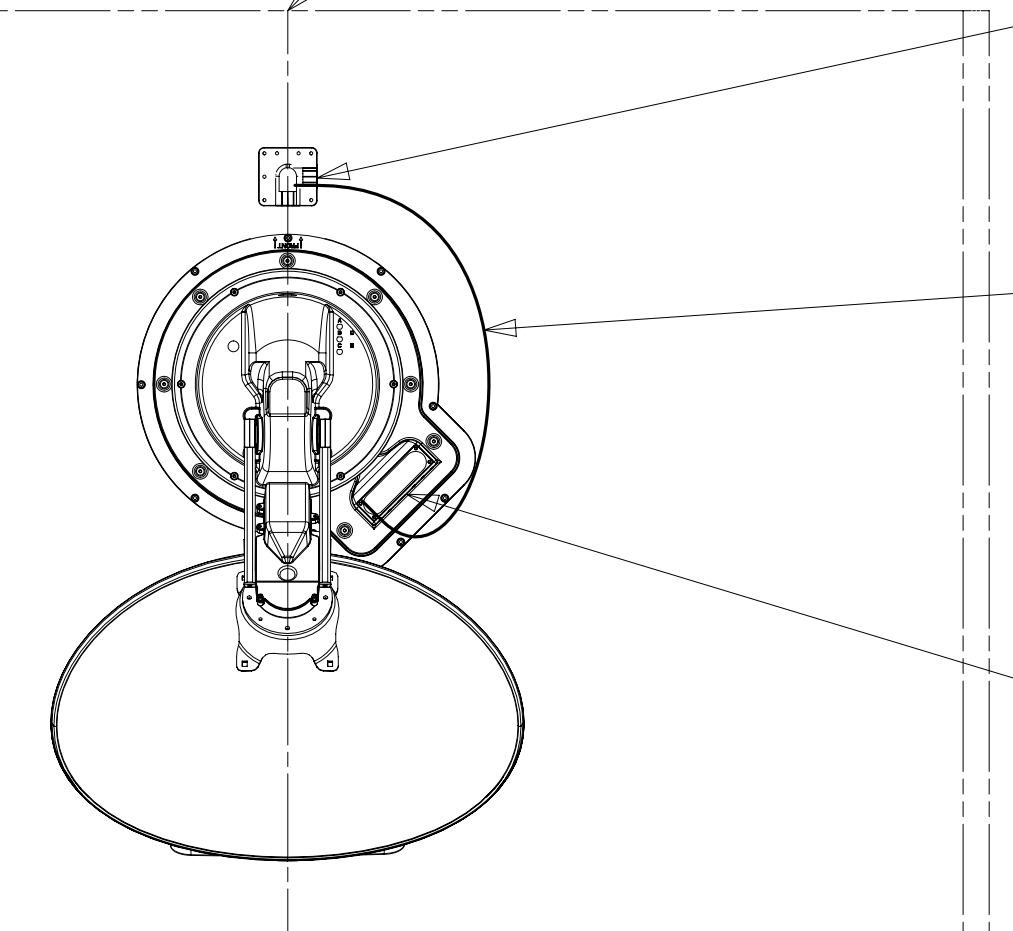


THE SATELLITE DISH AND WIRE CONNECTIONS ARE TO BE PLACED ON THE CENTERLINE OF THE MOTORHOME FACING FORWARD.

SEPARATE CABLES AND INSTALL WIRE COVER OVER HOLE IN ROOF ASM WITH CABLES EXITING ON PASSENGERS SIDE.

WHEN APPLYING ROOF SEALANT TO SATELLITE DISH, PLACE ROOF SEALANT HERE (APPROXIMATELY 75MM WIDE) AND PUSH THE CABLES INTO THE SEALANT TO STABILIZE THEM.

CONNECT CABLE ASM-COAX FROM ROOF ASM TO COAX CABLES ON SATELLITE DISH AND CONNECT 10' CABLE-DATA FROM ROOF ASM TO DATA CABLE FROM SATELLITE DISH AND PLACE ALL CONNECTIONS BACK INTO ROOF ASM.



DETAIL GC

2 REMOVE ALL SHIPPING RESTRAINTS AND FIRMLY INSERT THE SUPPLIED PLUGS INTO THE APPROPRIATE SIZED HOLES AS SPECIFIED IN THE INSTALLATION PROCESS.

1 SEE MANUFACTURER'S INSTALLATION FOR ADDITIONAL INFORMATION.

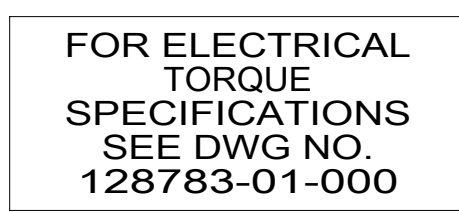
NOTES:

- 282 SOLAR PANEL - 100 WATT
- 783 SATELLITE HD TV SYSTEM AUTOC
- 193 TV ANTENNA-AMPLIFIED SYSTEM
- 48P SAT TV SYSTEM IN-MOTION
- 265 CODES/STANDARDS-CSA/CMVSS
- 1B1 CODES/STANDARDS USA

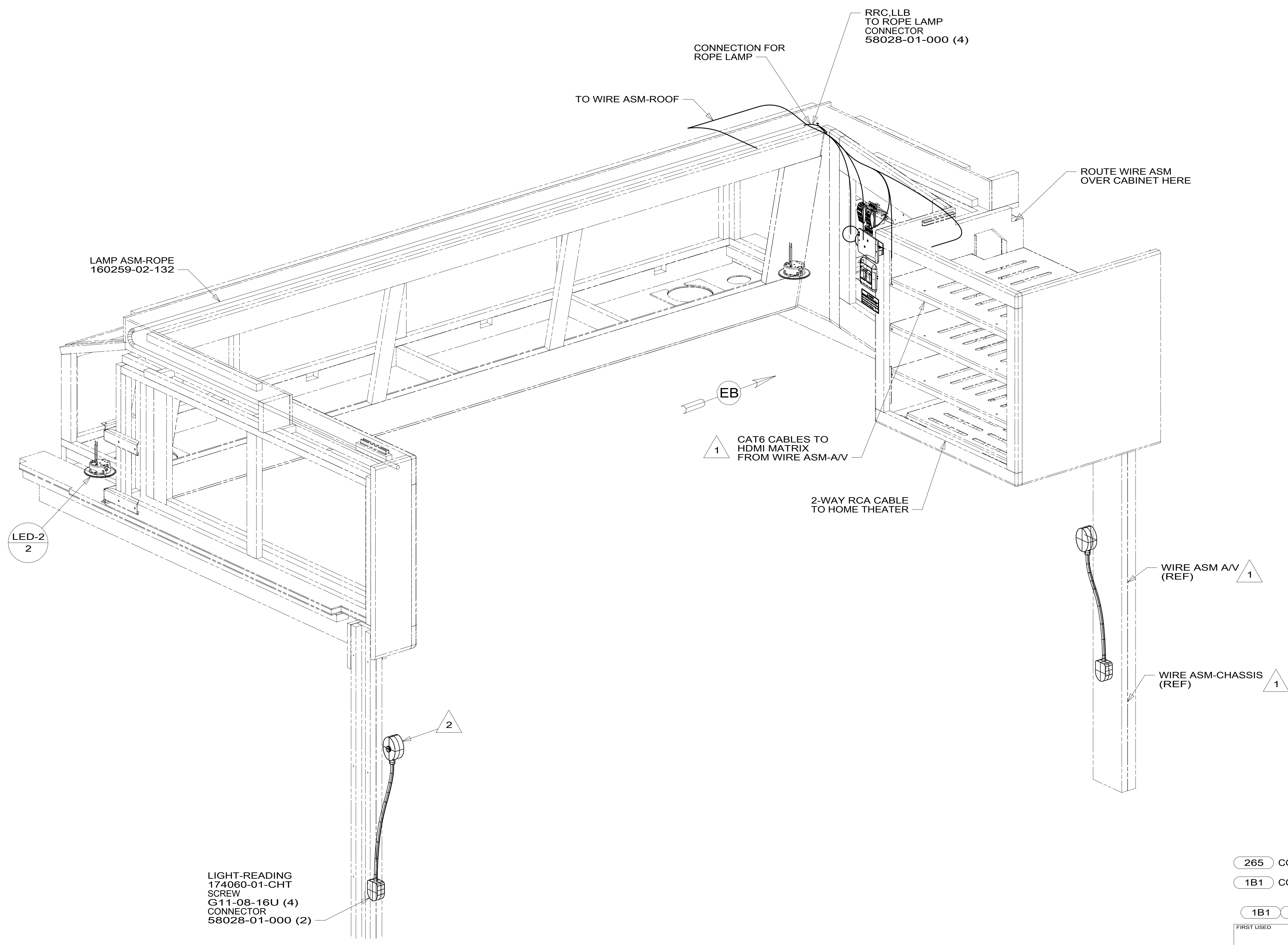
1B1	265
FIRST USED	
15 P42E	
DO NOT SCALE DRAWING	
TITLE: WIRING INSTL-BODY, 12V	
SHEET 7	PART NO 190142 REV

FOR ELECTRICAL TORQUE SPECIFICATIONS SEE DWG NO. 128783-01-000

FOR ELECTRICAL CALLOUTS SEE DWG NO. 121339-01-000



190142



2 WIRE IS FROM WIRE ASM-IP,MAIN. SEE WIRING INSTL-FRONT END FOR ADDITIONAL INFORMATION.

1 SEE WIRING INSTL-CHASSIS FOR ADDITIONAL INFORMATION.

FOR ELECTRICAL TORQUE SPECIFICATIONS SEE DWG NO. 128783-01-000

X-X FOR ELECTRICAL CALLOUTS SEE DWG NO. 121339-01-000

265 CODES/STANDARDS-CSA/CMVSS
 1B1 CODES/STANDARDS USA
 1B1 265

FIRST USED	
15 P42E	
DO NOT SCALE DRAWING	
TITLE: WIRING INSTL-BODY, 12V	
SHEET 8	PART NO 190142 REV
1 13-May-2015	

190142

8 7 6 5 4 3 2 1

D

D

C

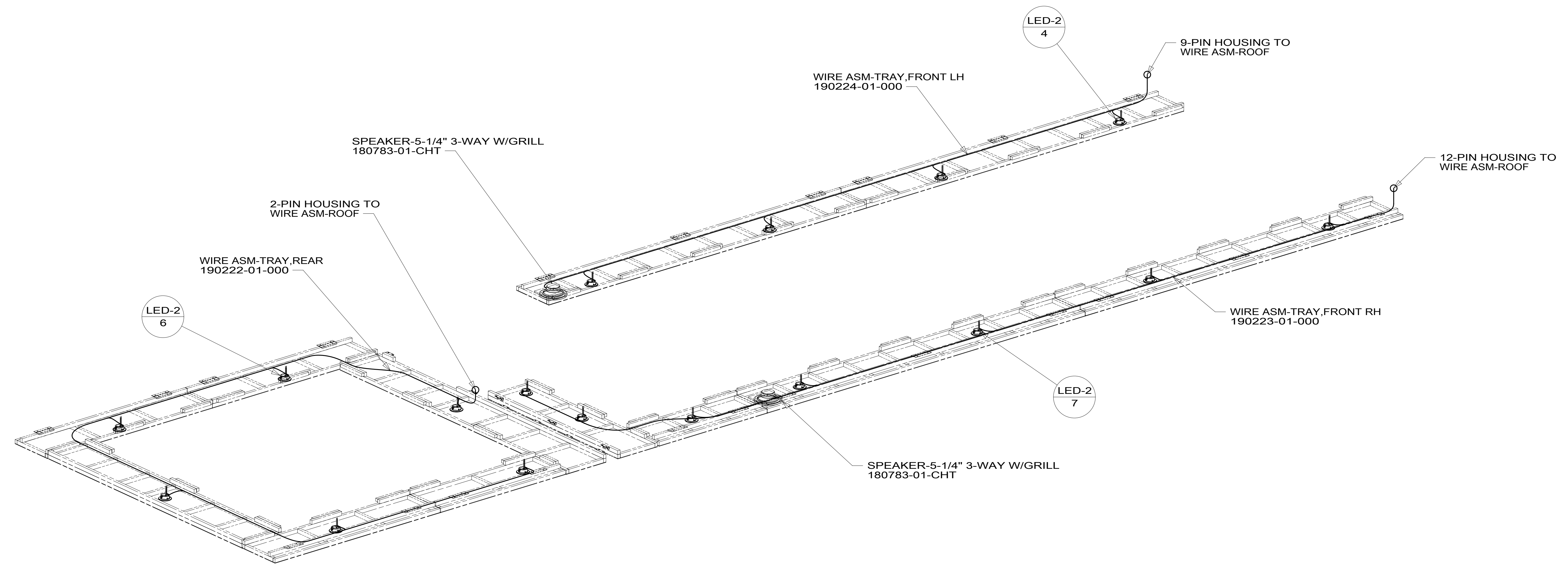
C

B

B

A

A



8 7 6 5 4 3 2 1



265 CODES/STANDARDS-CSA/CMVSS

1B1 CODES/STANDARDS USA

1B1 265

FIRST USED **15 P42E**

DO NOT SCALE DRAWING

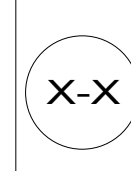
TITLE: **WIRING INSTL-BODY, 12V**

SHEET 9 PART NO **190142** REV

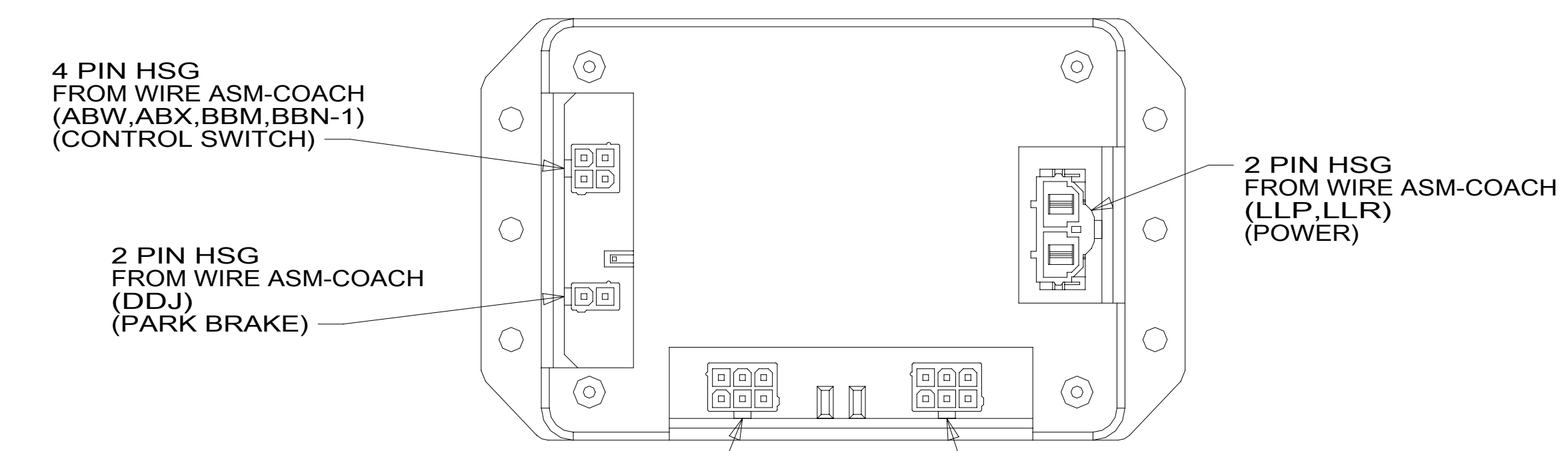
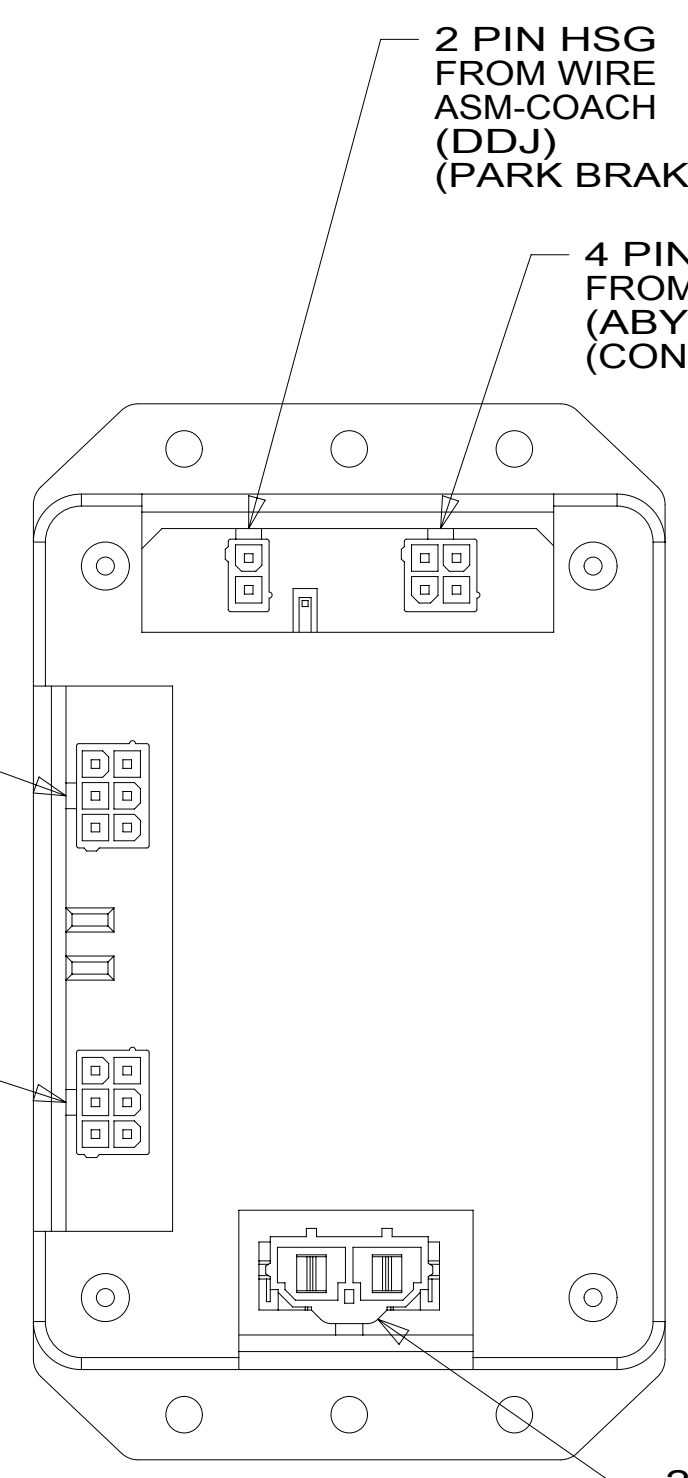
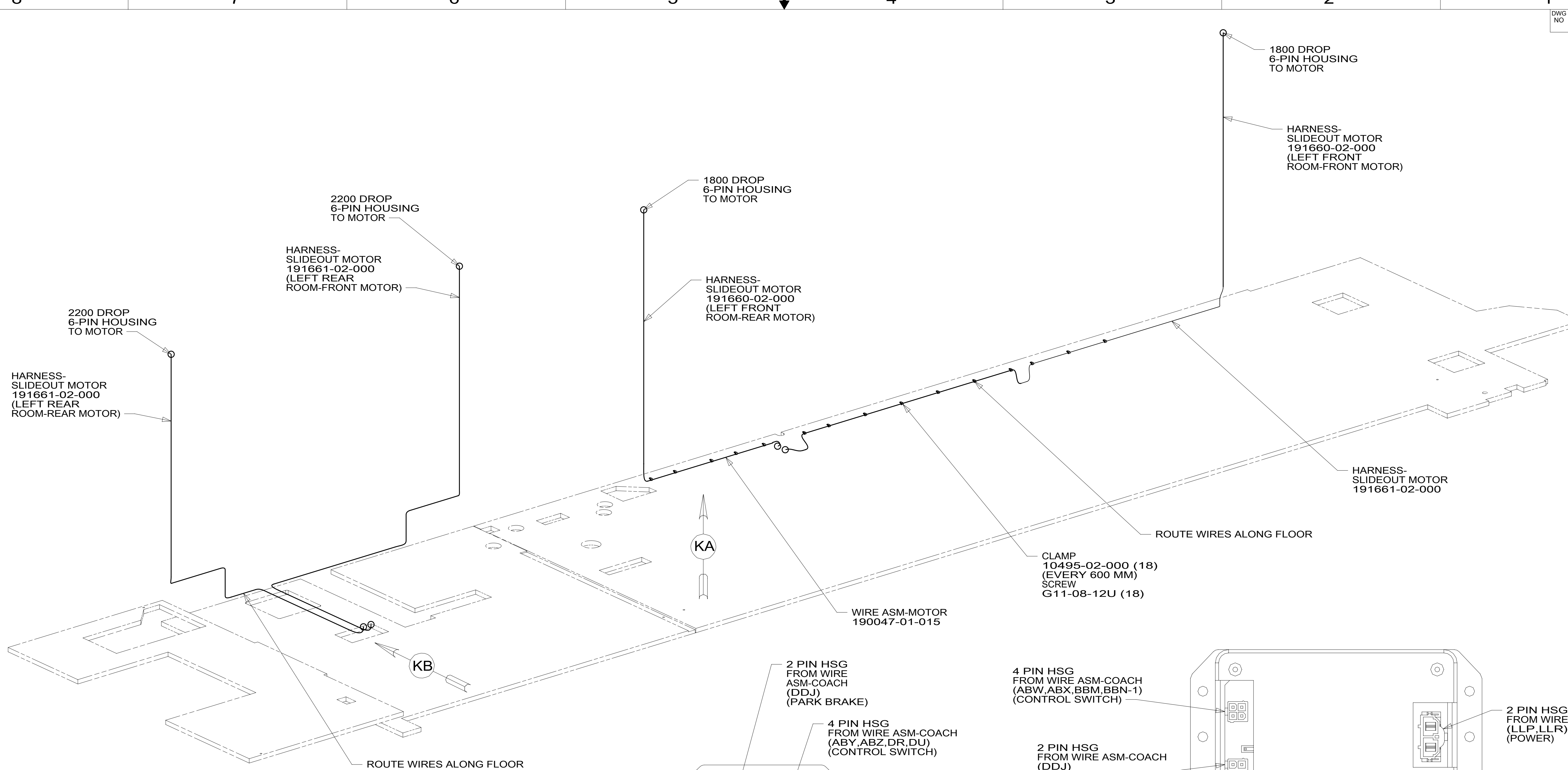
1 13-May-2015

FOR ELECTRICAL TORQUE SPECIFICATIONS SEE DWG NO. 128783-01-000

FOR ELECTRICAL CALLOUTS SEE DWG NO. 121339-01-000



190142



265 CODES/STANDARDS-CSA/CMVSS
 1B1 CODES/STANDARDS USA

1B1 265

FIRST USED		
15 P42E		
DO NOT SCALE DRAWING		
TITLE: WIRING INSTL-BODY, 12V		
SHEET 10	PART NO 190142	REV

FOR ELECTRICAL TORQUE SPECIFICATIONS SEE DWG NO. 128783-01-000

X-X FOR ELECTRICAL CALLOUTS SEE DWG NO. 121339-01-000

190142