



DANGER

Danger of electrical shock, burns or death. Always remove all power sources before attempting any repair, service or diagnostic work. Power can be present from shore power, generator, inverter or battery. All power sources must be disabled and secured before performing any service.



CAUTION

If you lack the skills, tools or equipment to perform diagnostic or repair work leave such work to an authorized Winnebago Industries dealer or other qualified shop.

DRAWING NO.	MODELS
189954-01	L36G
189954-02	L34T
189954-03	L38R

RELEASE	REV/DATE	DWG NO	189954
REV ZONE	REVISION RECORD	DATE	DFT-ORIG

	L36G	ITEM
CABLE ASM (YEL) FROM COACH BATTERY FUSE TO COACH SIDE OF AUX START SOLENOID	175207-52-039	1
CABLE ASM (ORG) FROM COACH BATTERY TO INVERTER FUSE	175207-62-003	2
CABLE ASM (ORG) FROM INVERTER FUSE TO INVERTER DISCONNECT	175207-62-012	3
CABLE ASM (ORG) FROM INVERTER DISCONNECT TO INVERTER POSITIVE TERMINAL	175207-62-005	4
CABLE ASM (BLK) FROM BATTERY TO INVERTER NEGATIVE TERMINAL	175211-01-018	5
CABLE ASM (BLK) FROM COACH BATTERY TO FRAME RAIL GROUND	175211-02-030	6
CABLE ASM (BLU) FROM CHASSIS BATTERY DISCONNECT TO LEVELING SYSTEM PUMP	141416-26-110	7
CABLE ASM (BLK) FROM LEVELING SYSTEM TO FRAME RAIL GROUND	133567-11-009	8
CABLE ASM (GRN) FROM COACH BAT DISC RELAY FUSE TO PASS THRU STUD IN FRONT LEFT COMPT	175207-42-115	9
CABLE ASM (GRN) FROM PASS THRU STUD IN FRONT LEFT COMPT TO GENERATOR	175207-42-024	10
CABLE ASM (BLK) FROM GENERATOR TO FRAME RAIL GROUND BOLT	175211-02-013	11
CABLE ASM (YEL) JUMPER BETWEEN POSITIVE POSTS ON COACH BATTERY	141417-51-002 (3)	12
CABLE ASM (BLK) JUMPER BETWEEN NEGATIVE POSTS ON COACH BATTERY	133568-11-002 (3)	13
CABLE ASM-TEMPERATURE,BATTERY	175385-03-000	14
CABLE ASM (RED) FROM CHASSIS BATTERY FUSE TO CHASSIS SIDE OF AUX START SOLENOID	175207-35-006	15
CABLE ASM (RED) FROM CHASSIS BATTERY TO CHASSIS BATTERY FUSE	175207-35-005	16
CABLE ASM (YEL) FROM COACH BATTERY TO COACH BATTERY FUSE	175207-52-003	17
CABLE ASM (RED) JUMPER BETWEEN POSITIVE POSTS IN LEFT FRONT COMPT	141417-32-002	18

- 265 CODES/STANDARDS-CSA/CMVSS
- 1B1 CODES/STANDARDS USA
- 1B1 265

WINNEBAGO COPYRIGHT 2014 WINNEBAGO INDUSTRIES, INC.

ALL DIMENSIONS ARE IN MILLIMETERS

15 L-SERIES

UNSPECIFIED TOLERANCES ARE:
 WHOLE DIM (X) : 3
 ONE-PLACE (X.X) : 1.5
 TWO-PLACE (X.XX) : 0.50
 ANGLE : 1°

THIRD ANGLE PROJECTION

DO NOT SCALE DRAWING REFER TO ES0018 FOR FASTENER TIGHTENING GUIDELINES

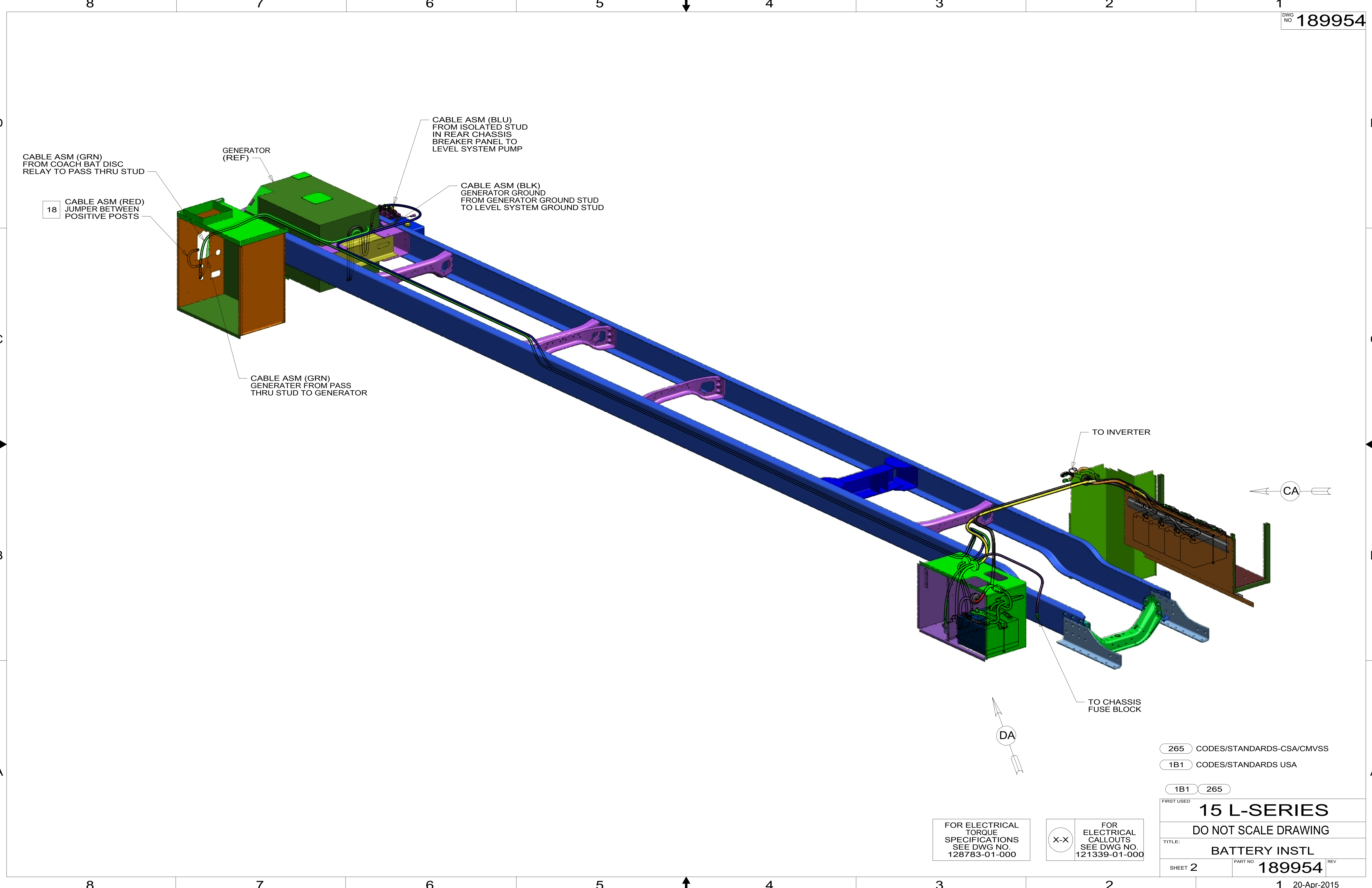
TITLE: **BATTERY INSTL**

SHEET 1 OF 5 PART NO **189954** REV

FOR ELECTRICAL TORQUE SPECIFICATIONS SEE DWG NO. 128783-01-000

FOR ELECTRICAL CALLOUTS SEE DWG NO. 121339-01-000

*189954 *A



CABLE ASM (GRN)
FROM COACH BAT DISC
RELAY TO PASS THRU STUD

18 CABLE ASM (RED)
JUMPER BETWEEN
POSITIVE POSTS

GENERATOR
(REF)

CABLE ASM (BLU)
FROM ISOLATED STUD
IN REAR CHASSIS
BREAKER PANEL TO
LEVEL SYSTEM PUMP

CABLE ASM (BLK)
GENERATOR GROUND
FROM GENERATOR GROUND STUD
TO LEVEL SYSTEM GROUND STUD

CABLE ASM (GRN)
GENERATOR FROM PASS
THRU STUD TO GENERATOR

TO INVERTER

TO CHASSIS
FUSE BLOCK

CA

DA

265 CODES/STANDARDS-CSA/CMVSS

1B1 CODES/STANDARDS USA

1B1 265

FIRST USED
15 L-SERIES

DO NOT SCALE DRAWING

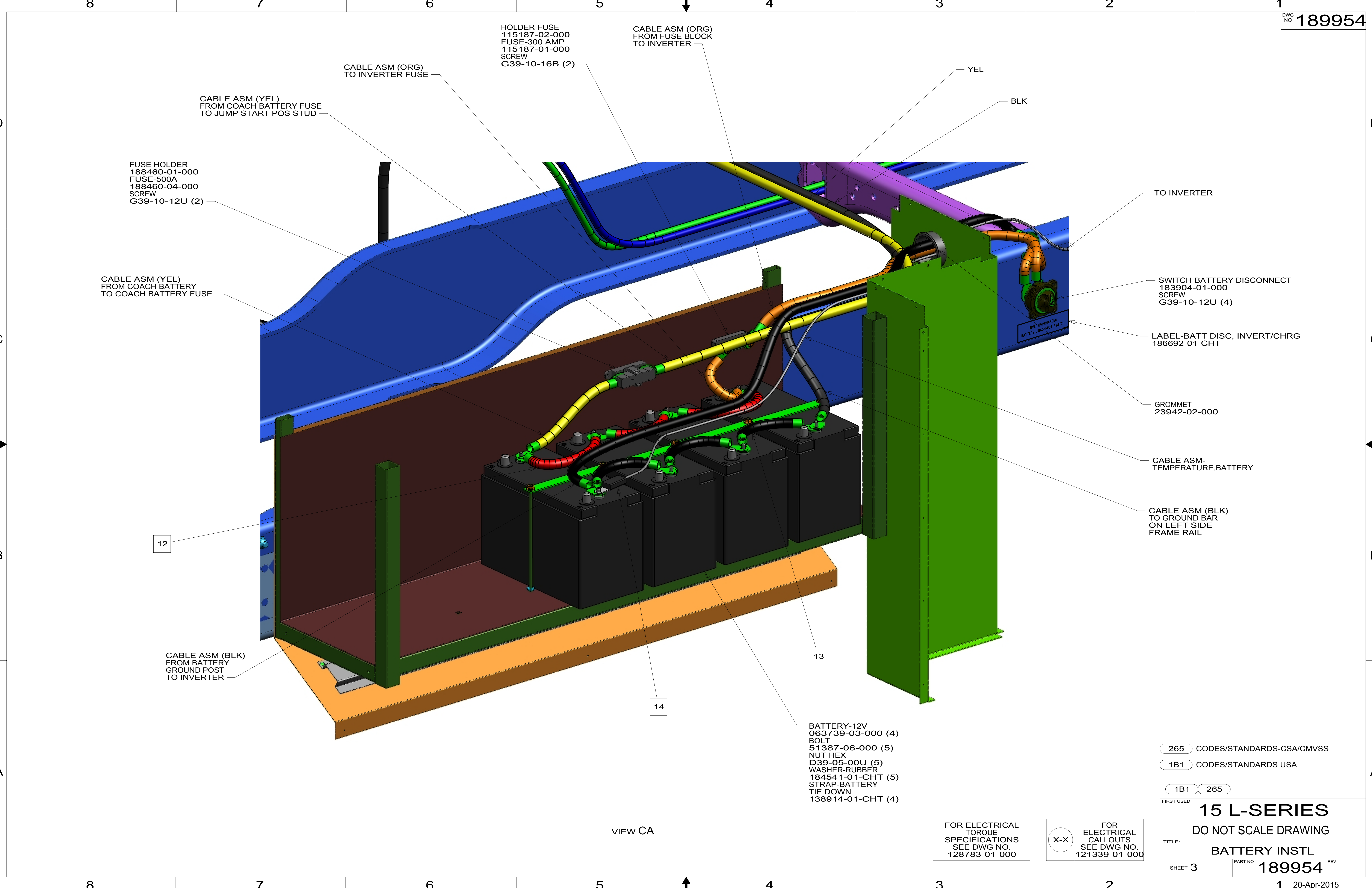
TITLE:
BATTERY INSTL

SHEET 2 PART NO **189954** REV

FOR ELECTRICAL
TORQUE
SPECIFICATIONS
SEE DWG NO.
128783-01-000

X-X FOR
ELECTRICAL
CALLOUTS
SEE DWG NO.
121339-01-000

189954



CABLE ASM (YEL)
FROM COACH BATTERY FUSE
TO JUMP START POS STUD

CABLE ASM (ORG)
TO INVERTER FUSE

HOLDER-FUSE
115187-02-000
FUSE-300 AMP
115187-01-000
SCREW
G39-10-16B (2)

CABLE ASM (ORG)
FROM FUSE BLOCK
TO INVERTER

YEL

BLK

FUSE HOLDER
188460-01-000
FUSE-500A
188460-04-000
SCREW
G39-10-12U (2)

CABLE ASM (YEL)
FROM COACH BATTERY
TO COACH BATTERY FUSE

TO INVERTER

SWITCH-BATTERY DISCONNECT
183904-01-000
SCREW
G39-10-12U (4)

LABEL-BATT DISC, INVERT/CHRG
186692-01-CHT

GROMMET
23942-02-000

CABLE ASM-
TEMPERATURE, BATTERY

CABLE ASM (BLK)
TO GROUND BAR
ON LEFT SIDE
FRAME RAIL

12

13

14

CABLE ASM (BLK)
FROM BATTERY
GROUND POST
TO INVERTER

BATTERY-12V
063739-03-000 (4)
BOLT
51387-06-000 (5)
NUT-HEX
D39-05-00U (5)
WASHER-RUBBER
184541-01-CHT (5)
STRAP-BATTERY
TIE DOWN
138914-01-CHT (4)

265 CODES/STANDARDS-CSA/CMVSS

1B1 CODES/STANDARDS USA

1B1 265

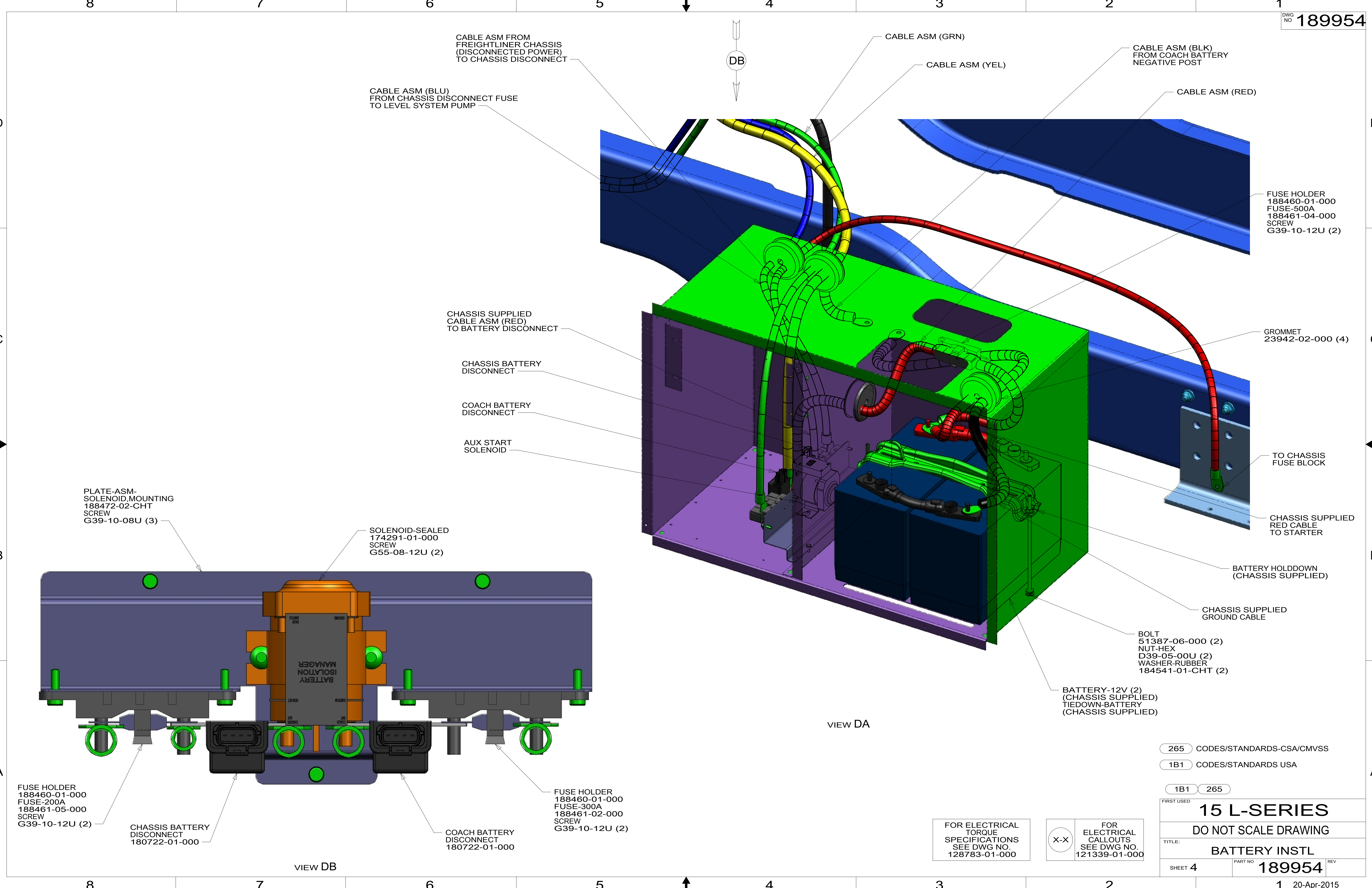
FIRST USED	
15 L-SERIES	
DO NOT SCALE DRAWING	
TITLE: BATTERY INSTL	
SHEET 3	PART NO 189954 REV
1 20-Apr-2015	

FOR ELECTRICAL
TORQUE
SPECIFICATIONS
SEE DWG NO.
128783-01-000

X-X
FOR
ELECTRICAL
CALLOUTS
SEE DWG NO.
121339-01-000

VIEW CA

*189954 *A



CABLE ASM FROM FREIGHTLINER CHASSIS (DISCONNECTED POWER) TO CHASSIS DISCONNECT

CABLE ASM (BLU) FROM CHASSIS DISCONNECT FUSE TO LEVEL SYSTEM PUMP

CABLE ASM (GRN)

CABLE ASM (YEL)

CABLE ASM (BLK) FROM COACH BATTERY NEGATIVE POST

CABLE ASM (RED)

FUSE HOLDER 188460-01-000
FUSE-500A 188461-04-000
SCREW G39-10-12U (2)

GROMMET 23942-02-000 (4)

TO CHASSIS FUSE BLOCK

CHASSIS SUPPLIED RED CABLE TO STARTER

BATTERY HOLDDOWN (CHASSIS SUPPLIED)

CHASSIS SUPPLIED GROUND CABLE

BOLT 51387-06-000 (2)
NUT-HEX D39-05-00U (2)
WASHER-RUBBER 184541-01-CHT (2)

BATTERY-12V (2) (CHASSIS SUPPLIED)
TIEDOWN-BATTERY (CHASSIS SUPPLIED)

CHASSIS SUPPLIED CABLE ASM (RED) TO BATTERY DISCONNECT

CHASSIS BATTERY DISCONNECT

COACH BATTERY DISCONNECT

AUX START SOLENOID

PLATE-ASM-SOLENOID MOUNTING 188472-02-CHT
SCREW G39-10-08U (3)

SOLENOID-SEALED 174291-01-000
SCREW G55-08-12U (2)

FUSE HOLDER 188460-01-000
FUSE-200A 188461-05-000
SCREW G39-10-12U (2)

CHASSIS BATTERY DISCONNECT 180722-01-000

FUSE HOLDER 188460-01-000
FUSE-300A 188461-02-000
SCREW G39-10-12U (2)

COACH BATTERY DISCONNECT 180722-01-000

VIEW DA

VIEW DB

FOR ELECTRICAL TORQUE SPECIFICATIONS SEE DWG NO. 128783-01-000

FOR ELECTRICAL CALLOUTS SEE DWG NO. 121339-01-000

265 CODES/STANDARDS-CSA/CMVSS

1B1 CODES/STANDARDS USA

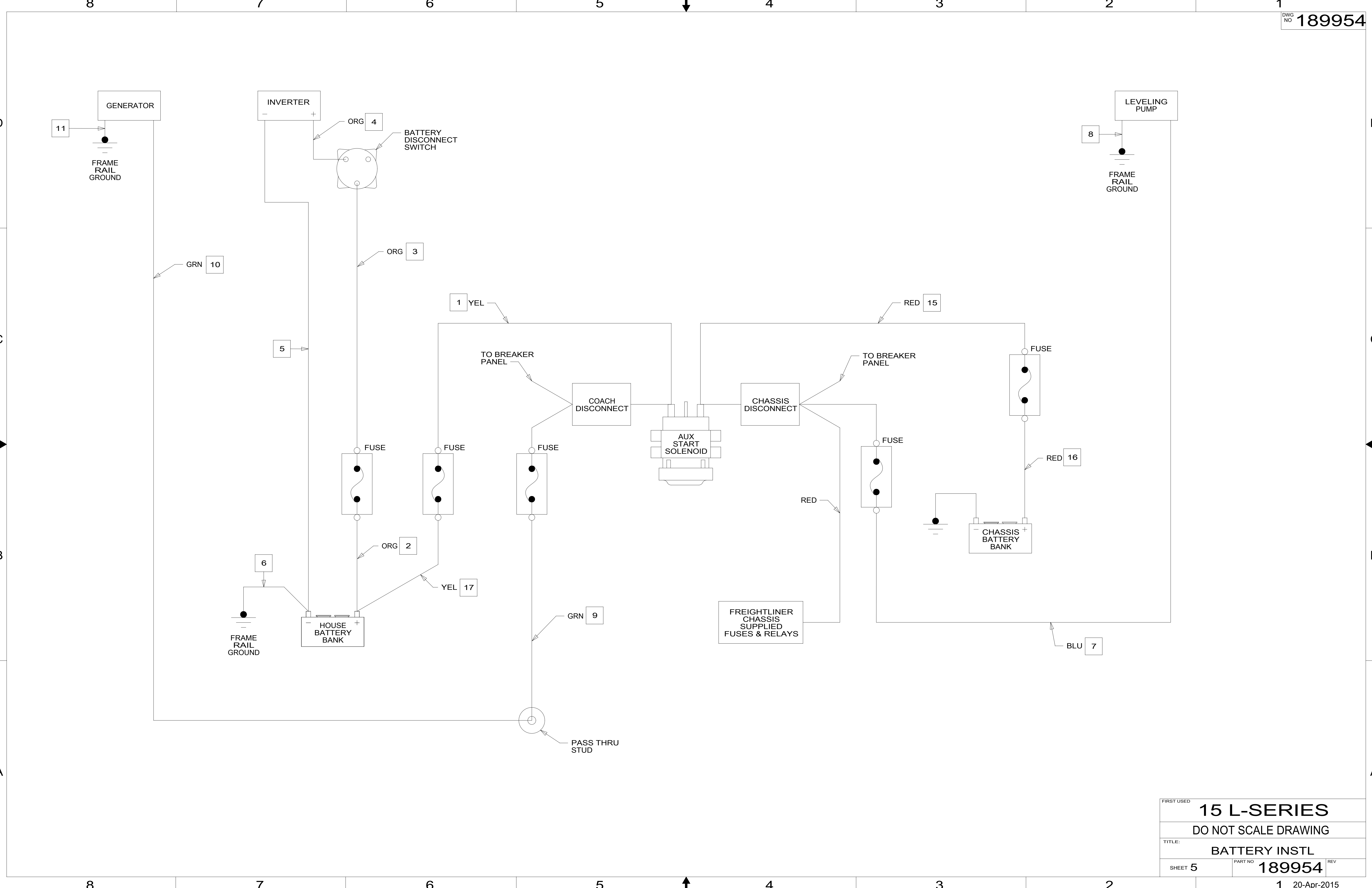
1B1 265

FIRST USED **15 L-SERIES**

DO NOT SCALE DRAWING

TITLE: **BATTERY INSTL**

SHEET 4 PART NO **189954** REV



FIRST USED		
15 L-SERIES		
DO NOT SCALE DRAWING		
TITLE:		
BATTERY INSTL		
SHEET 5	PART NO	REV
	189954	
1 20-Apr-2015		

*189954 *A