



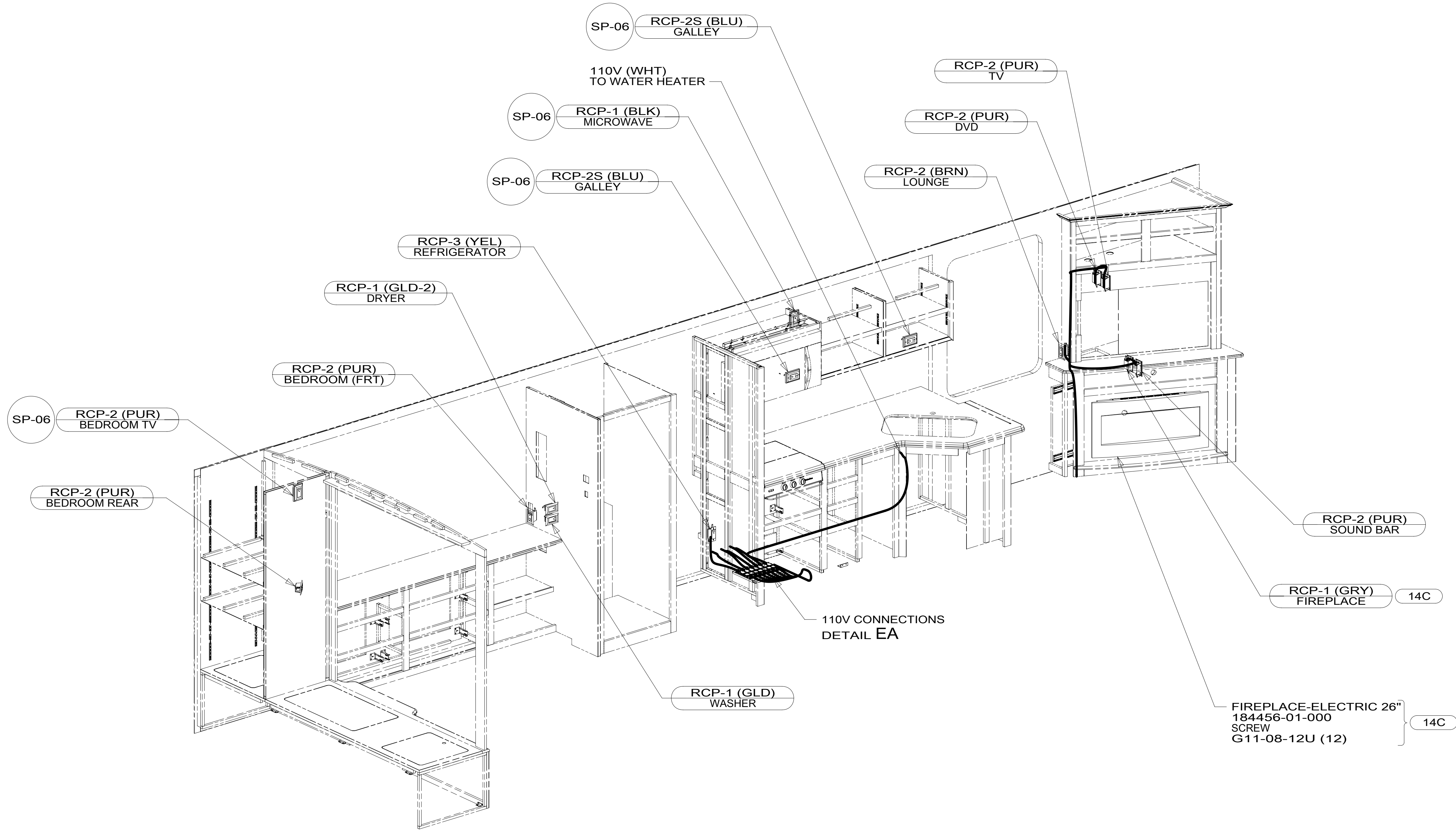
DANGER

Danger of electrical shock, burns or death. Always remove all power sources before attempting any repair, service or diagnostic work. Power can be present from shore power, generator, inverter or battery. All power sources must be disabled and secured before performing any service.



CAUTION

If you lack the skills, tools or equipment to perform diagnostic or repair work leave such work to an authorized Winnebago Industries dealer or other qualified shop.



1. ALL WIRES TO BE SECURED WITH CLAMP 10495 OR 10497 OR WIRE TIE 8343 OR 108046 EVERY 600 MM. USE SCREW G67-XX-XXX OR G56-XX-XXX AS APPROPRIATE FOR INSTALLATION.

NOTES:

- 21M WASHER/DRYER PREP
- 14C FIREPLACE-ELECTRIC
- 265 CODES/STANDARDS-CSA/CMVSS
- 1B1 CODES/STANDARDS USA

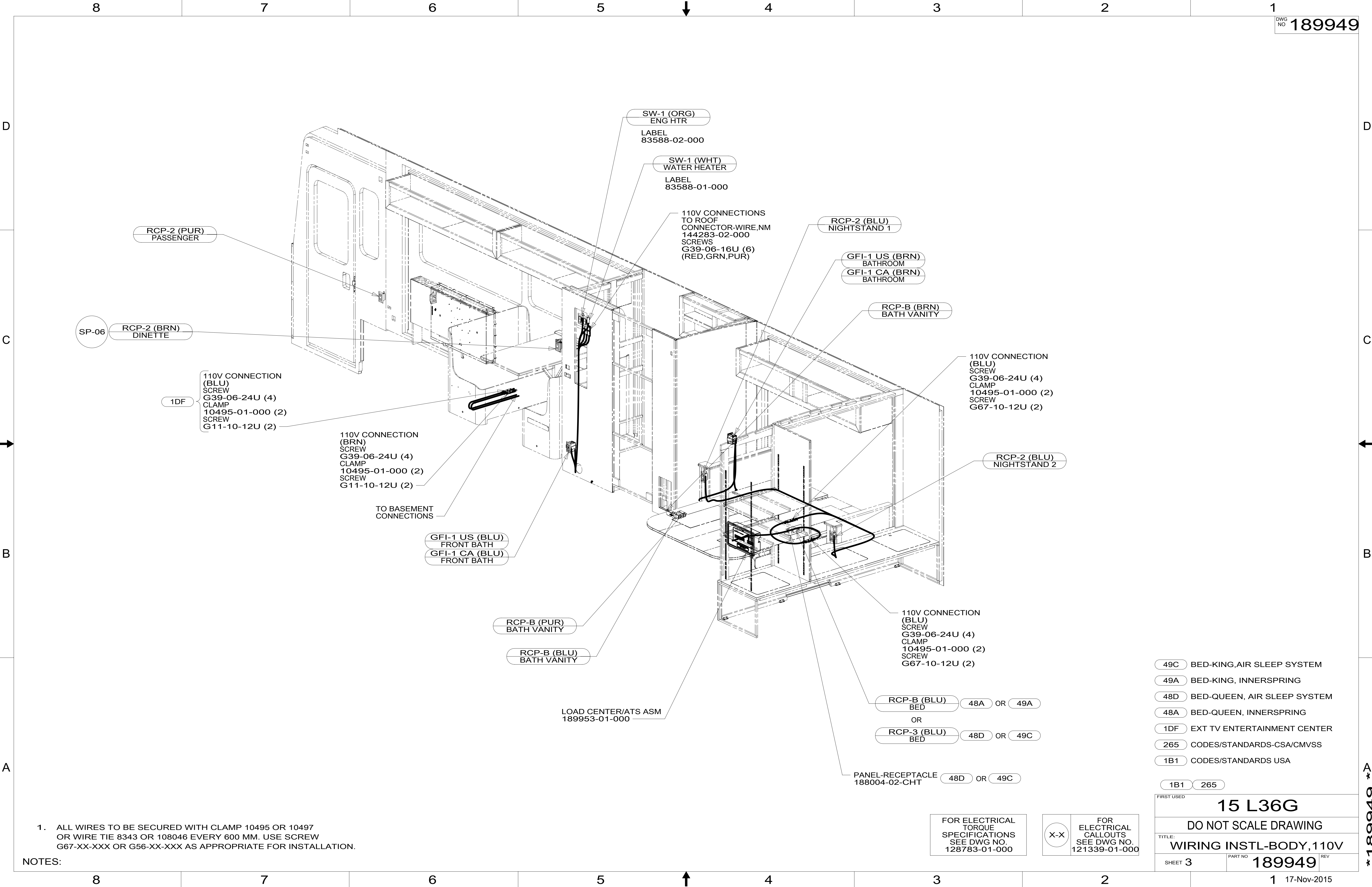
1B1 265

FOR ELECTRICAL TORQUE SPECIFICATIONS SEE DWG NO. 128783-01-000

FOR ELECTRICAL CALLOUTS SEE DWG NO. 121339-01-000

FIRST USED	
15 L36G	
DO NOT SCALE DRAWING	
TITLE: WIRING INSTL-BODY, 110V	
SHEET 2	PART NO 189949 REV

* 189949 * A *



RCP-2 (PUR)
PASSENGER

SW-1 (ORG)
ENG HTR

LABEL
83588-02-000

SW-1 (WHT)
WATER HEATER

LABEL
83588-01-000

110V CONNECTIONS
TO ROOF
CONNECTOR-WIRE,NM
144283-02-000
SCREWS
G39-06-16U (6)
(RED,GRN,PUR)

RCP-2 (BLU)
NIGHTSTAND 1

GFI-1 US (BRN)
BATHROOM

GFI-1 CA (BRN)
BATHROOM

RCP-B (BRN)
BATH VANITY

SP-06 RCP-2 (BRN)
DINETTE

110V CONNECTION
(BLU)
SCREW
G39-06-24U (4)
CLAMP
10495-01-000 (2)
SCREW
G11-10-12U (2)

1DF

110V CONNECTION
(BRN)
SCREW
G39-06-24U (4)
CLAMP
10495-01-000 (2)
SCREW
G11-10-12U (2)

TO BASEMENT
CONNECTIONS

GFI-1 US (BLU)
FRONT BATH

GFI-1 CA (BLU)
FRONT BATH

110V CONNECTION
(BLU)
SCREW
G39-06-24U (4)
CLAMP
10495-01-000 (2)
SCREW
G67-10-12U (2)

RCP-2 (BLU)
NIGHTSTAND 2

RCP-B (PUR)
BATH VANITY

RCP-B (BLU)
BATH VANITY

LOAD CENTER/ATS ASM
189953-01-000

110V CONNECTION
(BLU)
SCREW
G39-06-24U (4)
CLAMP
10495-01-000 (2)
SCREW
G67-10-12U (2)

RCP-B (BLU)
BED 48A OR 49A

RCP-3 (BLU)
BED 48D OR 49C

PANEL-RECEPTACLE
188004-02-CHT 48D OR 49C

- 49C BED-KING,AIR SLEEP SYSTEM
- 49A BED-KING, INNERSPRING
- 48D BED-QUEEN, AIR SLEEP SYSTEM
- 48A BED-QUEEN, INNERSPRING
- 1DF EXT TV ENTERTAINMENT CENTER
- 265 CODES/STANDARDS-CSA/CMVSS
- 1B1 CODES/STANDARDS USA

1B1 265

FIRST USED
15 L36G

DO NOT SCALE DRAWING

TITLE:
WIRING INSTL-BODY, 110V

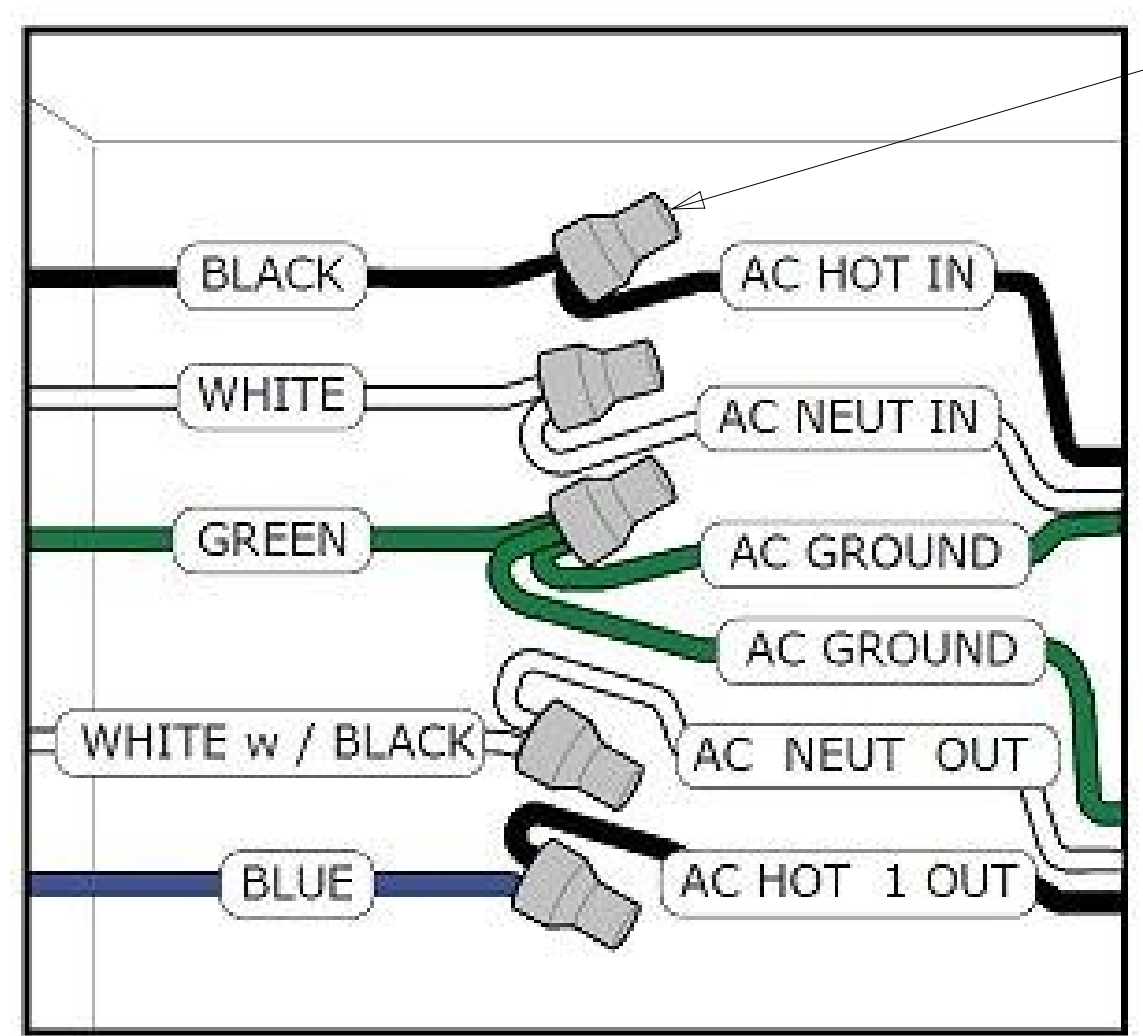
SHEET 3 PART NO **189949** REV

NOTES:
1. ALL WIRES TO BE SECURED WITH CLAMP 10495 OR 10497
OR WIRE TIE 8343 OR 108046 EVERY 600 MM. USE SCREW
G67-XX-XXX OR G56-XX-XXX AS APPROPRIATE FOR INSTALLATION.

FOR ELECTRICAL
TORQUE
SPECIFICATIONS
SEE DWG NO.
128783-01-000

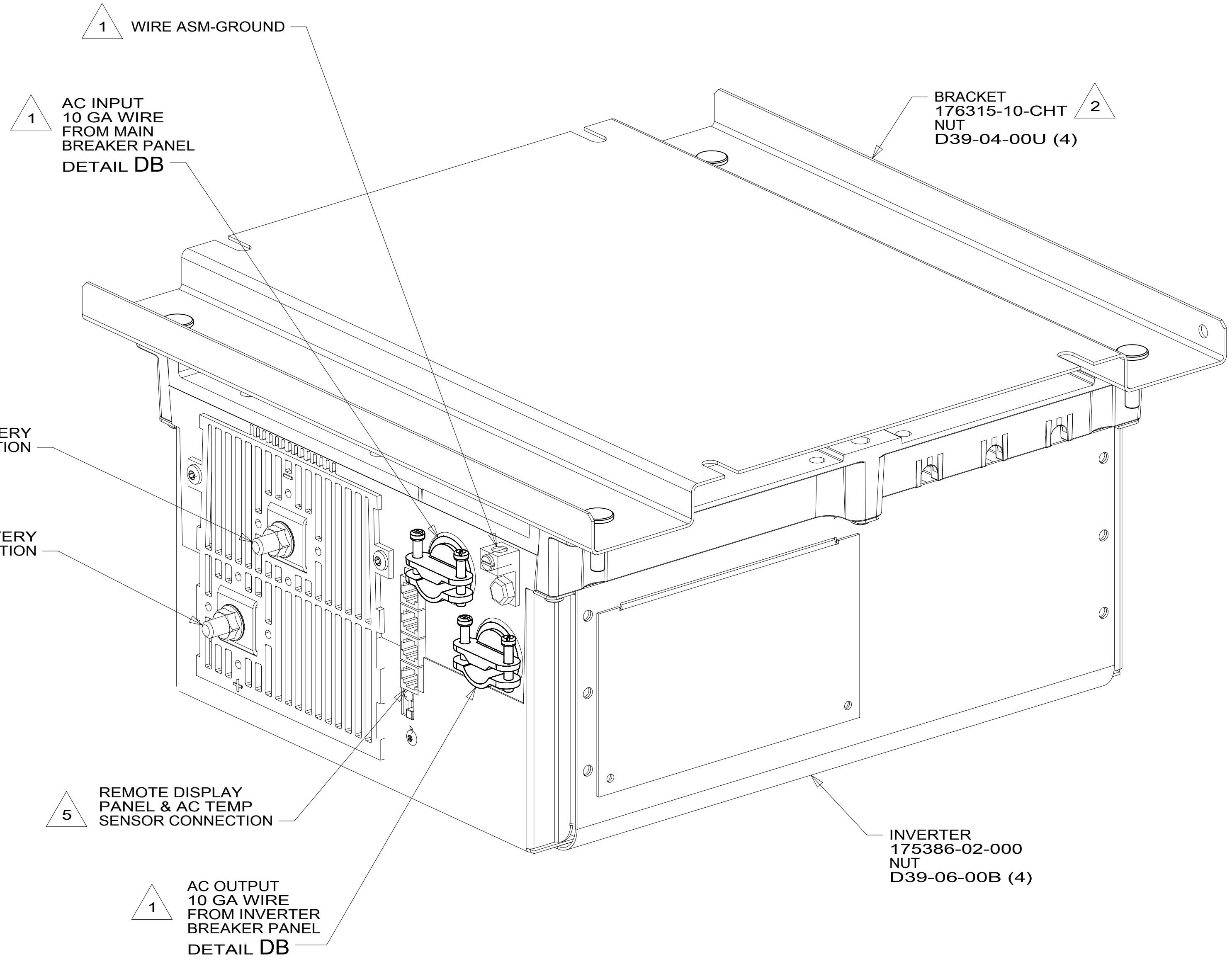
FOR
ELECTRICAL
CALLOUTS
SEE DWG NO.
121339-01-000

* 189949 *



CONNECTOR-WIRE
008311-01-000 (5)

DETAIL DB



1 WIRE ASM-GROUND

1 AC INPUT
10 GA WIRE
FROM MAIN
BREAKER PANEL
DETAIL DB

BRACKET
176315-10-CHT 2
NUT
D39-04-00U (4)

3 4 NEGATIVE BATTERY
CABLE CONNECTION

3 4 POSITIVE BATTERY
CABLE CONNECTION

5 REMOTE DISPLAY
PANEL & AC TEMP
SENSOR CONNECTION

1 AC OUTPUT
10 GA WIRE
FROM INVERTER
BREAKER PANEL
DETAIL DB

INVERTER
175386-02-000
NUT
D39-06-00B (4)

DETAIL DA

- NOTES:
- 5 CABLES PART OF WIRE ASM-COACH.
 - 4 DO NOT USE POWER/AIR TOOL TO INSTALL NUT. TORQUE TO 10-12 FT LBS. DO NOT USE A HAMMER.
 - 3 SEE WIRING INSTL-CHASSIS FOR ADDITIONAL INFORMATION.
 - 2 BRACKET IS LOCATED BY HOLES ON BRACKET.
 - 1 SEE LOAD CENTER/ATS ASM FOR ADDITIONAL INFORMATION.

265 CODES/STANDARDS-CSA/CMVSS
1B1 CODES/STANDARDS USA

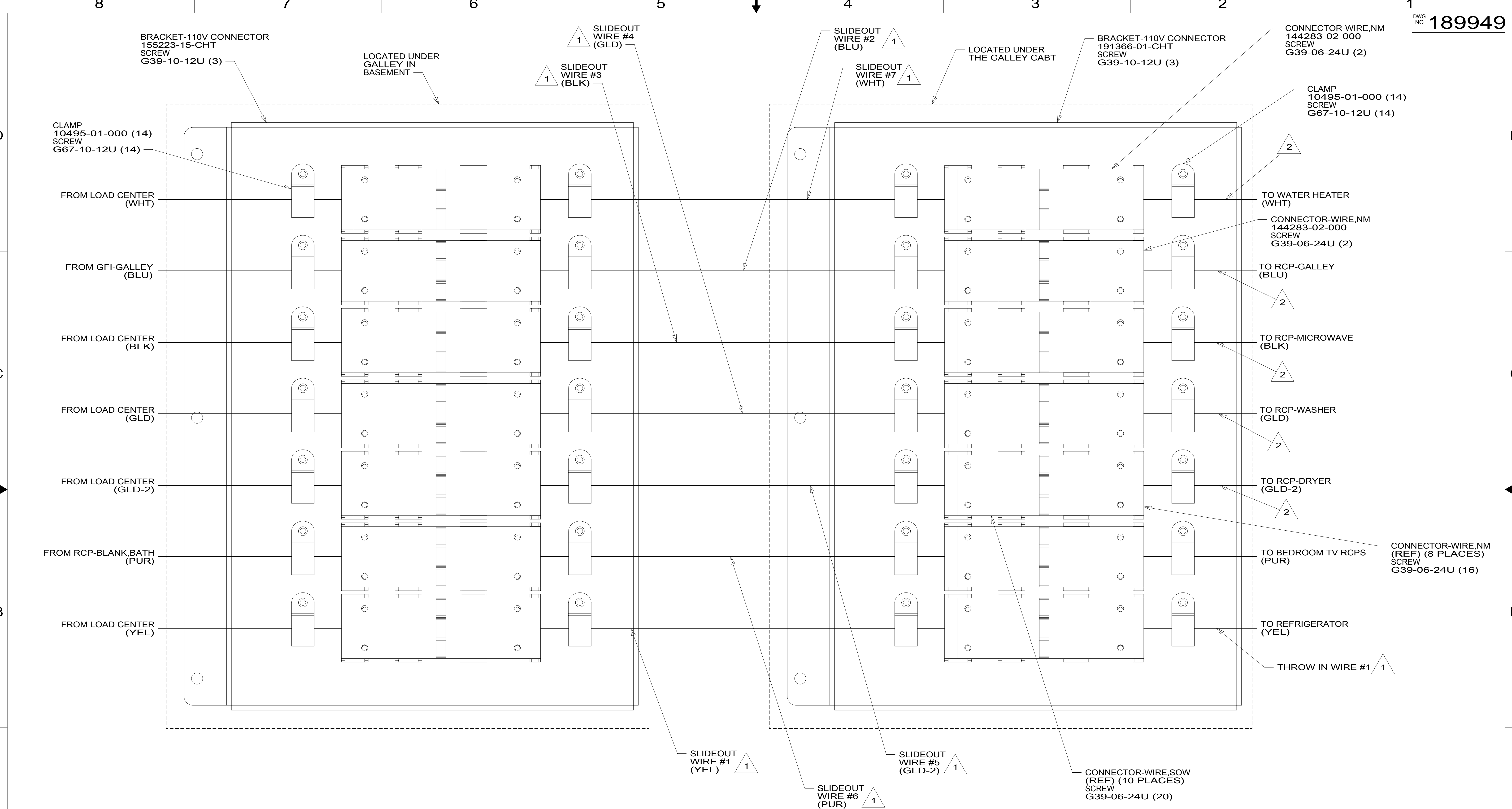
1B1 265

FIRST USED	
15 L36G	
DO NOT SCALE DRAWING	
TITLE: WIRING INSTL-BODY, 110V	
SHEET 4	PART NO 189949 REV

FOR ELECTRICAL
TORQUE
SPECIFICATIONS
SEE DWG NO.
128783-01-000

X-X
FOR ELECTRICAL
CALLOUTS
SEE DWG NO.
121339-01-000

* 189949 *



265 CODES/STANDARDS-CSA/CMVSS

1B1 CODES/STANDARDS USA

1B1 265

FIRST USED

15 L36G

DO NOT SCALE DRAWING

TITLE: **WIRING INSTL-BODY, 110V**

SHEET 5 PART NO. **189949** REV

17-Nov-2015

FOR ELECTRICAL TORQUE SPECIFICATIONS SEE DWG NO. 128783-01-000

FOR ELECTRICAL CALLOUTS SEE DWG NO. 121339-01-000

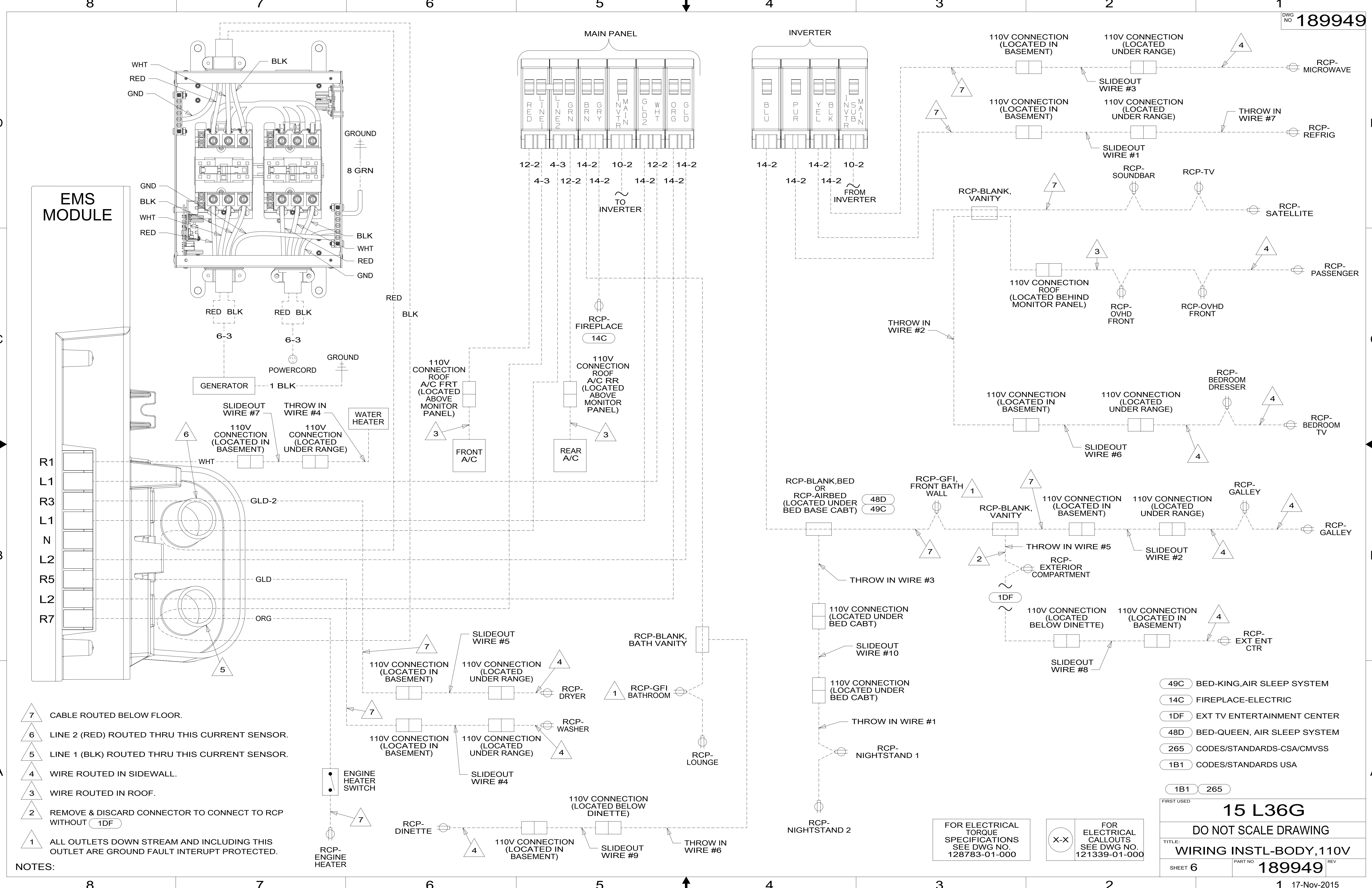
NOTES:

2 WIRE ROUTED IN SIDEWALL.

1 SEE LOAD CENTER/ATS ASM FOR ADDITIONAL INFORMATION.

DETAIL EA

* 189949 * A



- NOTES:**
- 7 CABLE ROUTED BELOW FLOOR.
 - 6 LINE 2 (RED) ROUTED THRU THIS CURRENT SENSOR.
 - 5 LINE 1 (BLK) ROUTED THRU THIS CURRENT SENSOR.
 - 4 WIRE ROUTED IN SIDEWALL.
 - 3 WIRE ROUTED IN ROOF.
 - 2 REMOVE & DISCARD CONNECTOR TO CONNECT TO RCP WITHOUT (1DF)
 - 1 ALL OUTLETS DOWN STREAM AND INCLUDING THIS OUTLET ARE GROUND FAULT INTERRUPT PROTECTED.

- (49C) BED-KING, AIR SLEEP SYSTEM
- (14C) FIREPLACE-ELECTRIC
- (1DF) EXT TV ENTERTAINMENT CENTER
- (48D) BED-QUEEN, AIR SLEEP SYSTEM
- (265) CODES/STANDARDS-CSA/CMVSS
- (1B1) CODES/STANDARDS USA

FOR ELECTRICAL TORQUE SPECIFICATIONS SEE DWG NO. 128783-01-000

FOR ELECTRICAL CALLOUTS SEE DWG NO. 121339-01-000

FIRST USED

15 L36G

DO NOT SCALE DRAWING

TITLE: **WIRING INSTL-BODY, 110V**

SHEET 6 PART NO. **189949** REV

17-Nov-2015

* 189949 A *