



DANGER

Danger of electrical shock, burns or death. Always remove all power sources before attempting any repair, service or diagnostic work. Power can be present from shore power, generator, inverter or battery. All power sources must be disabled and secured before performing any service.

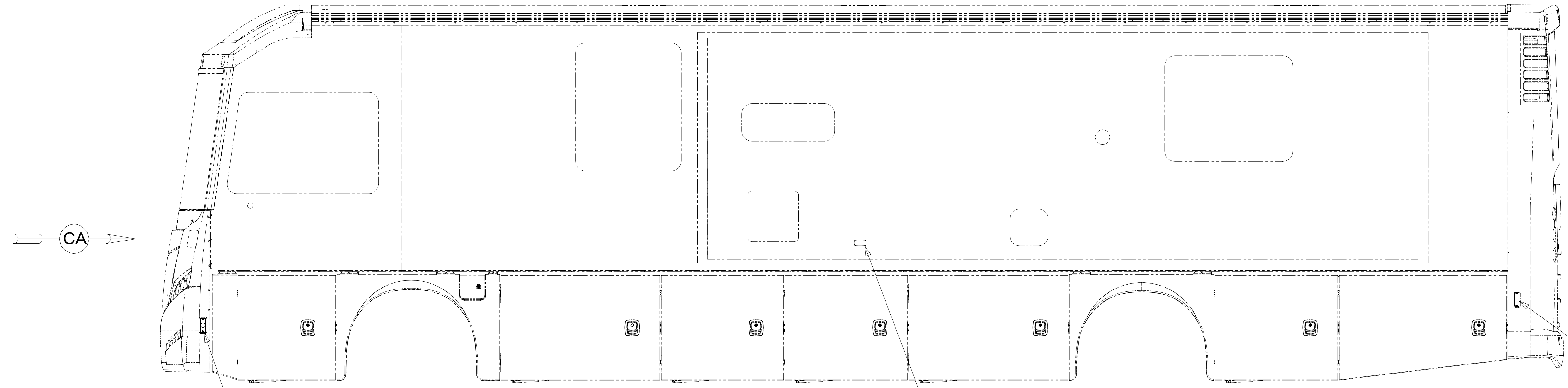


CAUTION

If you lack the skills, tools or equipment to perform diagnostic or repair work leave such work to an authorized Winnebago Industries dealer or other qualified shop.

8	7	6	5	4	3	2	1
DRAWING NO.	MODEL						
189946-01	L36G						

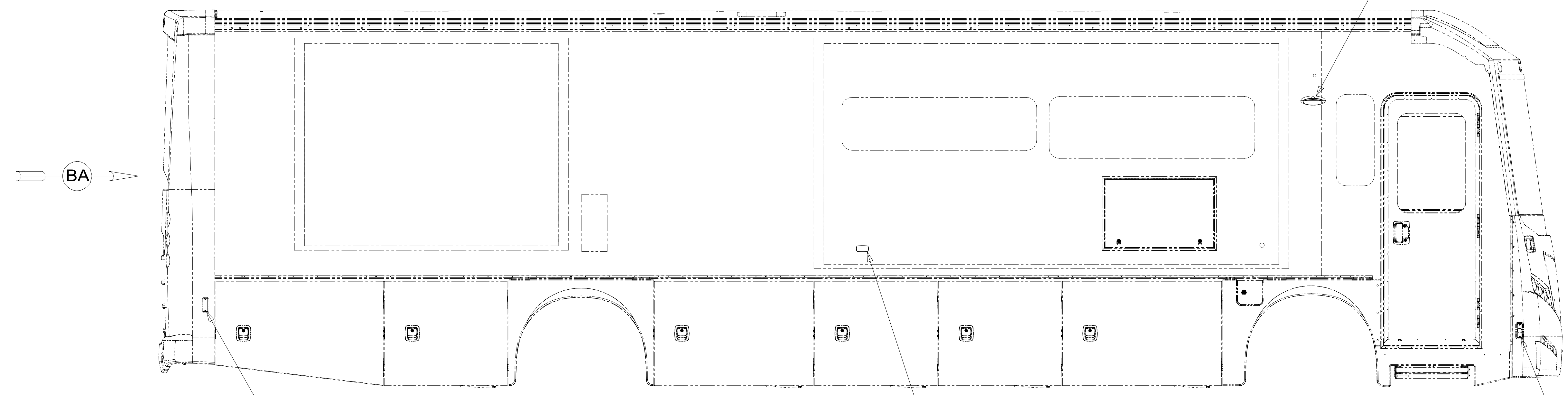
RELEASE	REV/DATE	DWG NO.	189946
REV ZONE	REVISION RECORD	DATE	DTR-ORIG



LAMP ASM-SIDEMARKER,AMBER
171195-02-000
SCREW
G11-08-12U (2)

LAMP-MARKER,W AMBER LENS,BLK
193802-03-000
GASKET-LIGHT
193802-05-000
SCREW
G11-08-12U (EXT) (2)
CONNECTOR
58028-01-000 (4)

LAMP-MARKER,RED
171195-01-000
SCREW
G11-08-12U (2)



LAMP-MARKER,RED
171195-01-000
SCREW
G11-08-12U (2)

LAMP-MARKER,W AMBER LENS,BLK
193802-03-000
GASKET-LIGHT
193802-05-000
SCREW
G11-08-12U (EXT) (2)
CONNECTOR
58028-01-000 (4)

LAMP ASM-SIDEMARKER,AMBER
171195-02-000
SCREW
G11-08-12U (2)

FOR ELECTRICAL
TORQUE
SPECIFICATIONS
SEE DWG NO.
128783-01-000

FOR
ELECTRICAL
CALLOUTS
SEE DWG NO.
121339-01-000

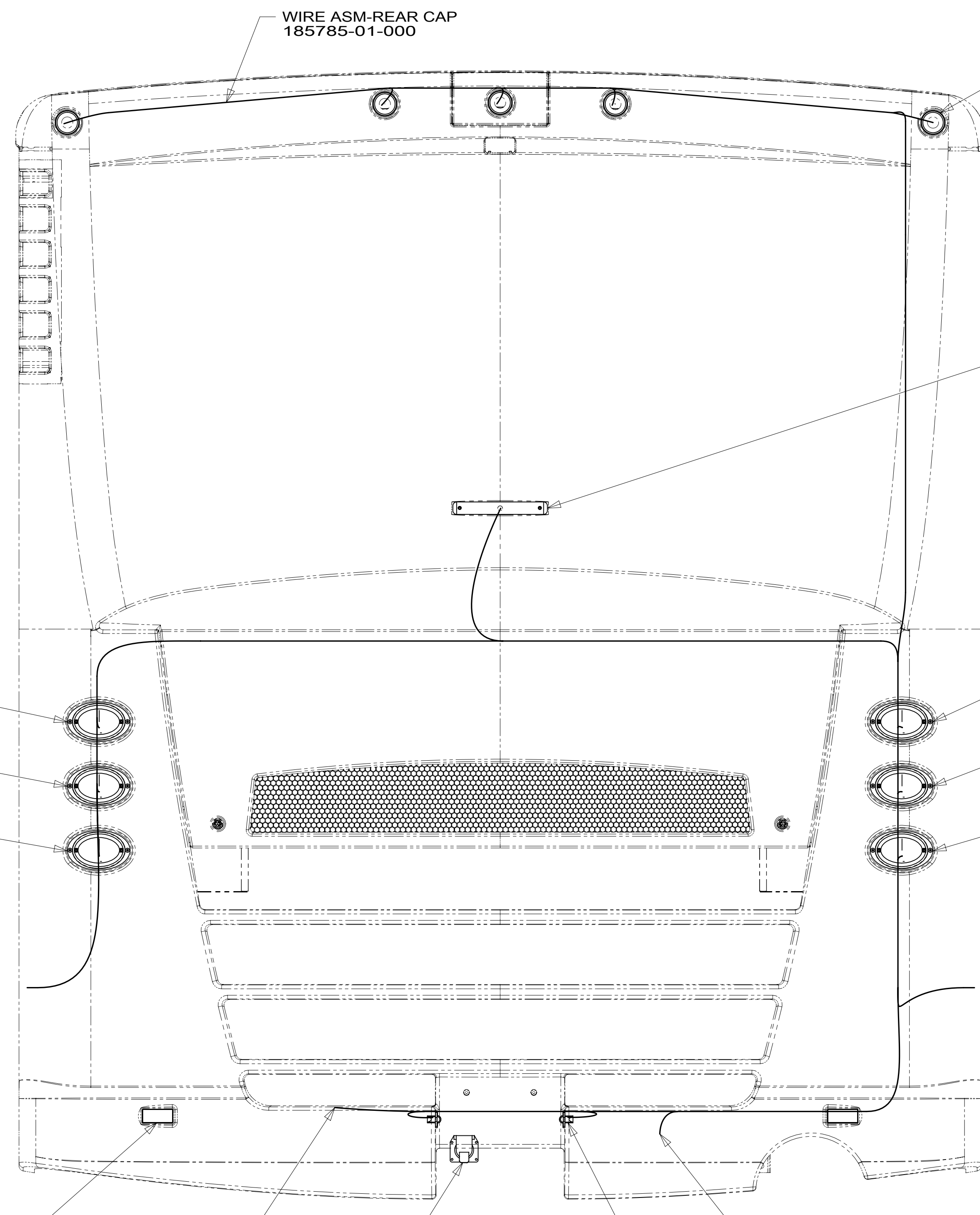
- 265 CODES/STANDARDS-CSA/CMVSS
- 1B1 CODES/STANDARDS USA
- 1B1 265



DTR	ORIG. DATE
CHKR	ALL DIMENSIONS ARE IN MILLIMETERS
P.E.	FIRST USED
M.E.	15 L-SERIES
DSNR	MATERIAL:
UNSPECIFIED TOLERANCES ARE:	
WHOLE DIM (X)	: 3
ONE-PLACE (X.X)	: 1.5
TWO-PLACE (X.XX)	: 0.50
ANGLE	: 1°
THIRD ANGLE PROJECTION	
DO NOT SCALE DRAWING	REFER TO ES0018 FOR FASTENER TIGHTENING GUIDELINES

TITLE:	WIRING INSTL-EXTERIOR LAMPS	
SHEET 1 OF 3	PART NO.	189946
REF:	1	19-Jun-2015

189946 A



LAMP-STOP/TURN/TAI
172560-02-000
LAMP-ASM-TURN
172560-06-000
LAMP-BACKUP
172560-04-000

LAMP-ASM-CLEARANCE, RED
138996-02-000 (5)
BRACKET-LAMP, CLEARANCE
138996-03-000 (5)
SCREW
G39-08-16U (EXT) (10)

LIGHT-THIRD BRAKE
136916-01-000
SCREW
G39-06-16U (2)

LAMP-STOP/TURN/TAI
172560-01-000
LAMP-ASM-TURN
172560-05-000
LAMP-BACKUP
172560-03-000

REFLECTOR
106646-02-000 (2)

2-PIN HOUSING
TO WIRE ASM-CHASSIS

TRAILER CONNECTOR,
WIRING AND FASTENERS
(CHASSIS SUPPLIED)

8 PIN HOUSING
TO FREIGHTLINER
CHASSIS WIRING

LAMP-LICENSE
87201-01-000 (2)
SCREW
G11-06-12U (EXT) (4)

VIEW BA

1 REMOVE PAPER BACKING FROM REFLECTOR AND PREP APPLICATION SURFACE WITH ISOPROPYL ALCOHOL WIPE BEFORE INSTALLATION.

FOR ELECTRICAL TORQUE SPECIFICATIONS SEE DWG NO. 128783-01-000

FOR ELECTRICAL CALLOUTS SEE DWG NO. 121339-01-000

265 CODES/STANDARDS-CSA/CMVSS

1B1 CODES/STANDARDS USA

1B1 265

FIRST USED 15 L-SERIES

DO NOT SCALE DRAWING

TITLE: WIRING INSTL-EXTERIOR LAMPS

SHEET 2 PART NO 189946 REV

8

7

6

5

4

3

2

1

D

D

C

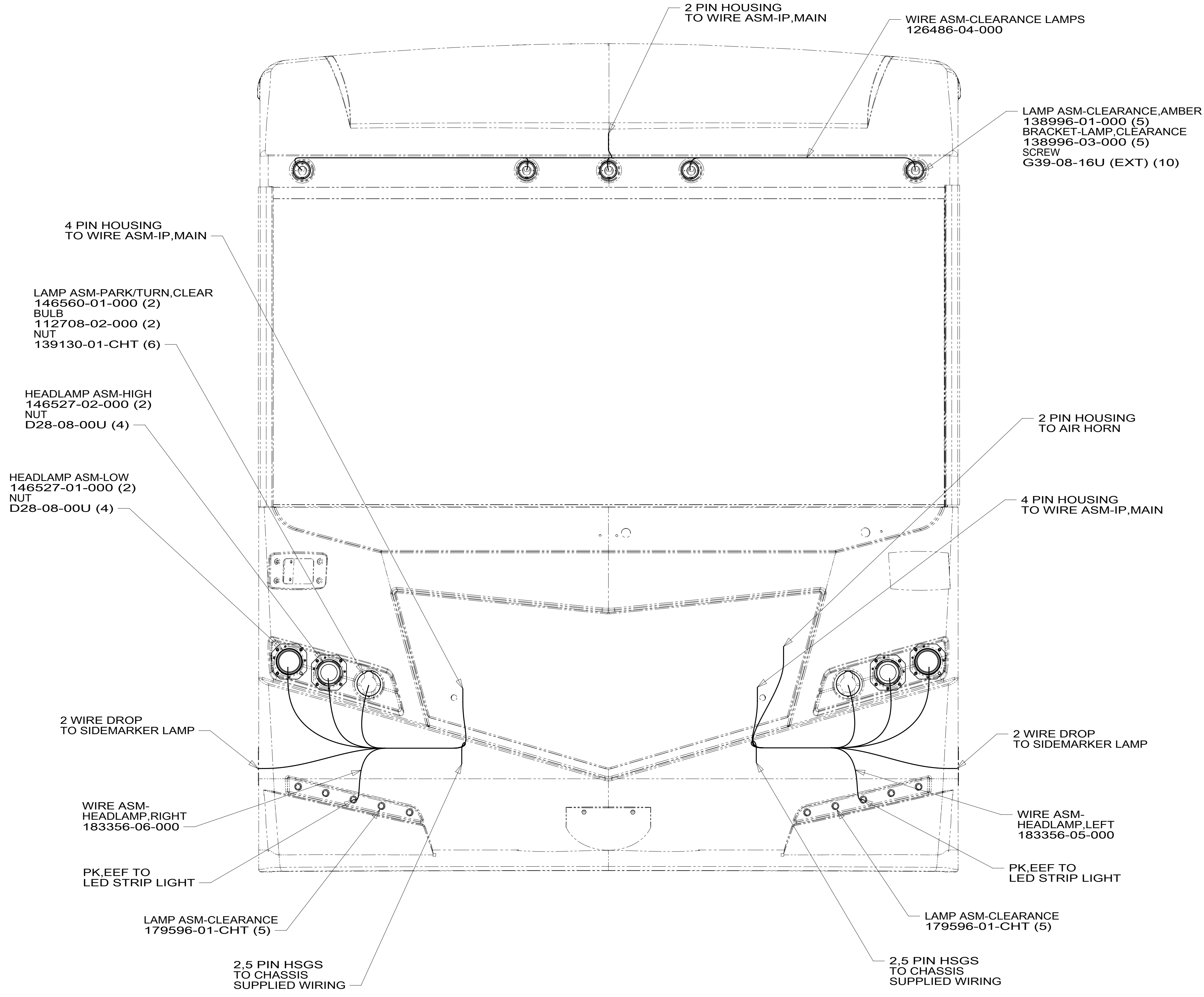
C

B

B

A

A



VIEW CA

FOR ELECTRICAL TORQUE SPECIFICATIONS SEE DWG NO. 128783-01-000

FOR ELECTRICAL CALLOUTS SEE DWG NO. 121339-01-000

265 CODES/STANDARDS-CSA/CMVSS

1B1 CODES/STANDARDS USA

1B1 265

FIRST USED 15 L-SERIES

DO NOT SCALE DRAWING

TITLE: WIRING INSTL-EXTERIOR LAMPS

SHEET 3 PART NO 189946 REV

1 19-Jun-2015

8

7

6

5

4

3

2

1

* 189946 *