



DANGER

Danger of electrical shock, burns or death. Always remove all power sources before attempting any repair, service or diagnostic work. Power can be present from shore power, generator, inverter or battery. All power sources must be disabled and secured before performing any service.

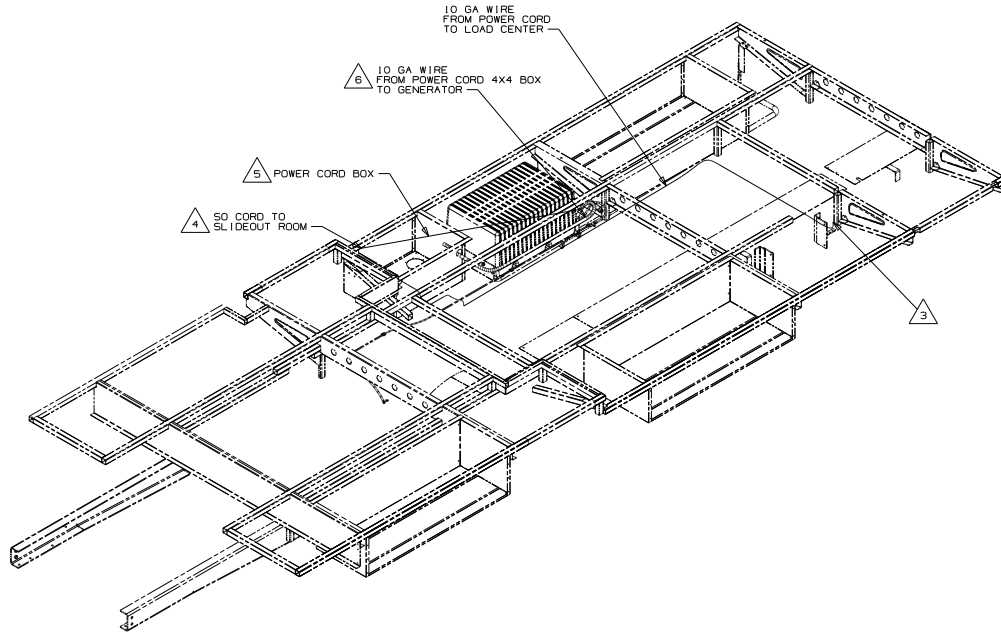


CAUTION

If you lack the skills, tools or equipment to perform diagnostic or repair work leave such work to an authorized Winnebago Industries dealer or other qualified shop.

DRAWING NO.	FEATURE	SHEET	MODEL
189931-01	-----	1,2,3,4	331K
189931-02	-----	1,2,4,5	331KP
189931-11	(1B1) (12D)	-----	-----
189931-15	(265) (12D)	-----	-----

RELEASE	REV/DATE	DWG NO	189931
REV ZONE	REVISION RECORD	DATE	07R-016



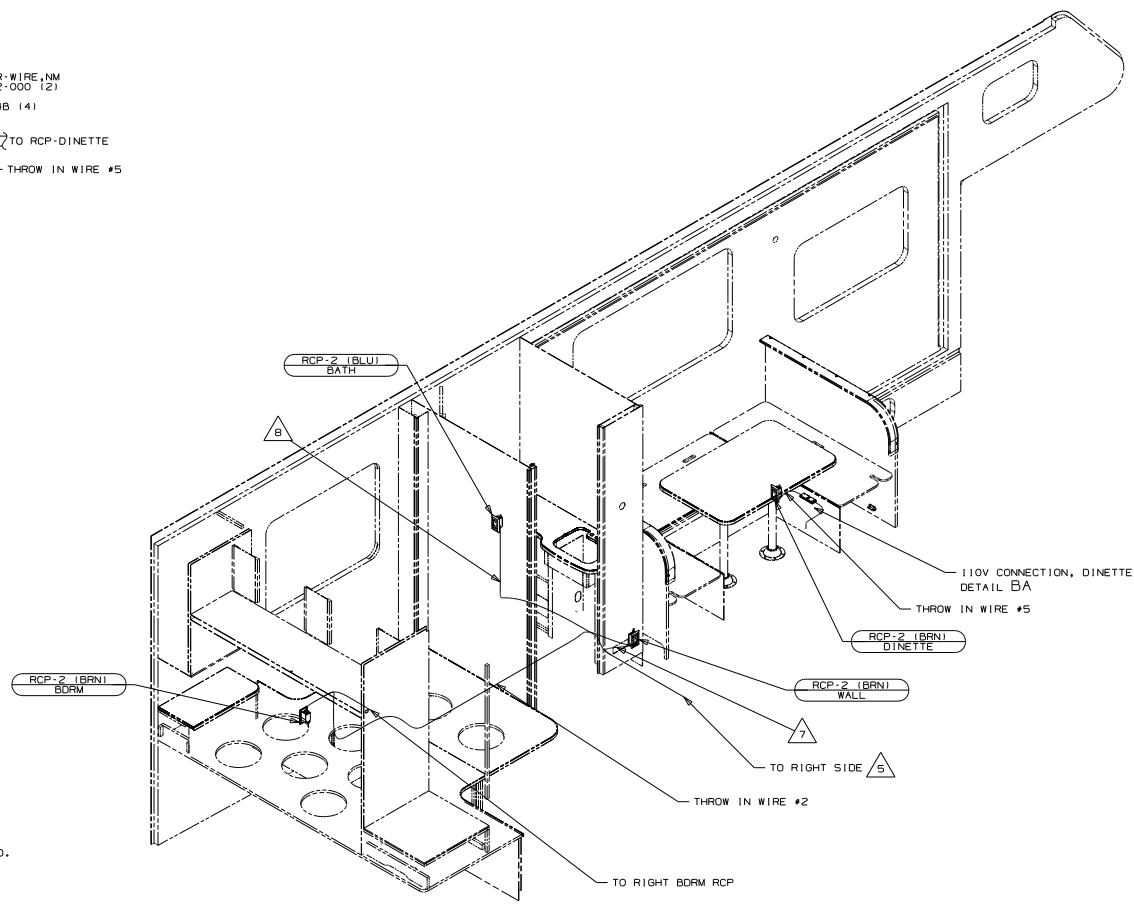
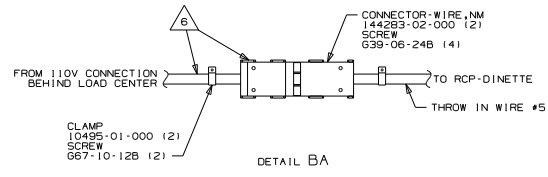
- (12D) ELECTRICAL SYSTEM 30 AMP
- (265) CODES/STANDARDS-CSA/CMVSS
- (1B1) CODES/STANDARDS USA
- (1B1) (265)

WINNEBAGO <small>W I N N E B A G O I N D U S T R I E S , I N C .</small>		COPYRIGHT 2014 WINNEBAGO INDUSTRIES, INC.	
DATE	ORIG. DATE		
CHKR	ALL DIMENSIONS ARE IN MILLIMETERS		
P.E.	FIRST USED		
W.E.			
CDR		15 331K/P	
UNSPECIFIED TOLERANCES ARE:		MATERIAL	
HOLES 010-151	1 3		
ONE-PLACE 12-151	1 1.5		
TWO-PLACE 12-151	1 0.50		
ANGLE	1 1"		
THIRD ANGLE PROJECTION			
DO NOT SCALE DRAWING		REFER TO 550016 FOR FASTENER TIGHTENING GUIDELINES	
TITLE:		WIRING INSTL-BODY,110V	
SHEET of 5		PART NO 189931 REV	

- NOTES:
1. AT MINIMUM ALL WIRES TO BE SUPPORTED AND SECURED PER CODE REQUIREMENTS. USE CLAMP 10495 OR 10497 OR WIRE TIE 8343 OR 108046 AND SCREW G67-XX-XXX OR G56-XX-XXX AS APPROPRIATE FOR INSTALLATION.
 2. ALL 110V WIRE TO BE CLAMPED WITH CLAMP 10497-05-000 WITHIN 200MM OF OUTLET BOXES. USE SCREW G67-10-12B.
- △ 6 SEE GENERATOR INSTL FOR ADDITIONAL INFORMATION.
 △ 5 SEE LOAD CENTER/ATS ASM FOR ADDITIONAL INFORMATION.
 △ 4 CORD IS PART OF WIRE ASM-CHASSIS.
 △ 3 ROUTE WIRE THRU FLOOR.

FOR ELECTRICAL
TORQUE
SPECIFICATIONS
SEE DWG NO.
128783-01-000

FOR
ELECTRICAL
CALLOUTS
SEE DWG NO.
121339-01-000



- △ 8 LEAVE 1700 MM OF BLU CIRCUIT EXITING FROM FLOOR EXPOSED.
- △ 7 LEAVE 600 MM OF BOTH BRN WIRES EXITING FROM FLOOR EXPOSED.
- △ 6 CORD & CONNECTORS ARE PART OF WIRE ASM-CHASSIS.
- △ 5 ROUTE WIRE THRU FLOOR.
- FOR MORE INFORMATION SEE WIRING DIAGRAM-BODY, 110V.
 - ALL GROUND WIRE TO BE COVERED WITH TUBING B041-02-000.
 - ALL 110V WIRE TO BE CLAMPED WITH CLAMP 10497-05-000 WITHIN 200MM OF OUTLET BOXES, USE SCREW 667-10-126.
 - AT MINIMUM ALL WIRES TO BE SUPPORTED AND SECURED PER CODE REQUIREMENTS. USE CLAMP 10495 OR 10497 OR WIRE TIE B343 OR 108046 AND SCREW 667-XX-XXX OR G56-XX-XXX AS APPROPRIATE FOR INSTALLATION.

265 CODES/STANDARDS-CSA/CMVSS
181 CODES/STANDARDS USA

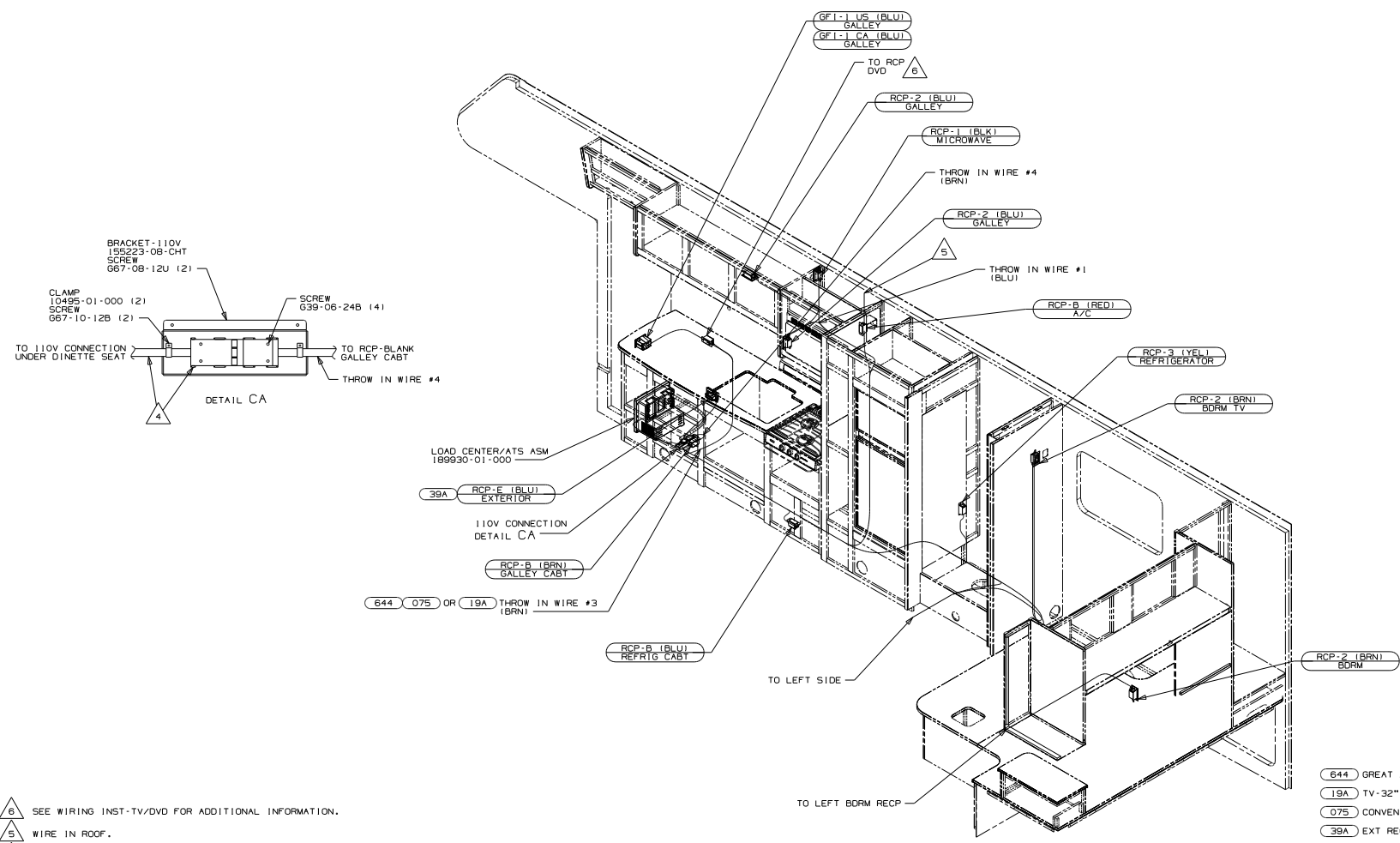
181 265

PART NOS		15 331K/P	
DO NOT SCALE DRAWING			
TITLE		WIRING INSTL-BODY, 110V	
SHEET 2	PART NO	189931	REV

FOR ELECTRICAL TORQUE SPECIFICATIONS SEE DWG NO. 128783-01-000

FOR ELECTRICAL CALLOUTS SEE DWG NO. 121339-01-000

NOTES:



- △ 6 SEE WIRING INST-TV/DVD FOR ADDITIONAL INFORMATION.
 △ 5 WIRE IN ROOF.
 △ 4 CORD AND CONNECTORS ARE PART OF WIRE ASM-CHASSIS.
 3. ALL GROUND WIRE TO BE COVERED WITH TUBING B041-02-000.
 2. ALL 110V WIRE TO BE CLAMPED WITH CLAMP 10495-05-000 WITHIN 200MM OF OUTLET BOXES, USE SCREW 667-10-12B.
 1. AT MINIMUM ALL WIRES TO BE SUPPORTED AND SECURED PER CODE REQUIREMENTS, USE CLAMP 10495 OR 10497 OR WIRE TIE B343 OR 108046 AND SCREW 667-XX-XXX OR G56-XX-XXX AS APPROPRIATE FOR INSTALLATION.

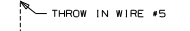
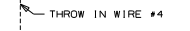
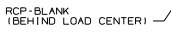
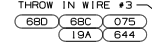
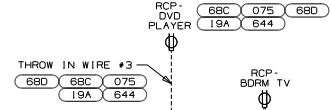
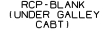
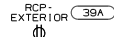
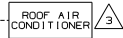
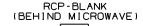
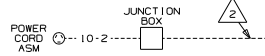
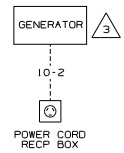
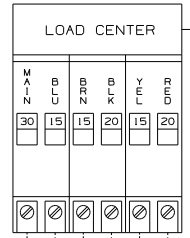
331K ONLY

- 644 GREAT ALASKAN RENTAL PACKAGE
- 19A TV-32" COLOR, STEREO W/REMOTE
- 075 CONVENIENCE & APPEARANCE PKG
- 39A EXT RECEPTACLE DPLX 120VAC
- 265 CODES/STANDARDS-CSA/CMVSS
- 1B1 CODES/STANDARDS USA

PART NOS		15 331K/P	
DO NOT SCALE DRAWING			
TITLE: WIRING INSTL-BODY, 110V			
SHEET 3	PART NO	189931	REV

FOR ELECTRICAL TORQUE SPECIFICATIONS SEE DWG NO. 128783-01-000

FOR ELECTRICAL CALLOUTS SEE DWG NO. 121339-01-000



- 68D TV-40" COLOR, STEREO W/REMOTE
- 644 GREAT ALASKAN RENTAL PACKAGE
- 68C TV-39" COLOR, STEREO W/REMOTE
- 19A TV-32" COLOR, STEREO W/REMOTE
- 075 CONVENIENCE & APPEARANCE PKG
- 39A EXT RECEPTACLE DPLX 120VAC
- 265 CODES/STANDARDS-CSA/CMVSS
- 1B1 CODES/STANDARDS USA

15 331K/P

DO NOT SCALE DRAWING

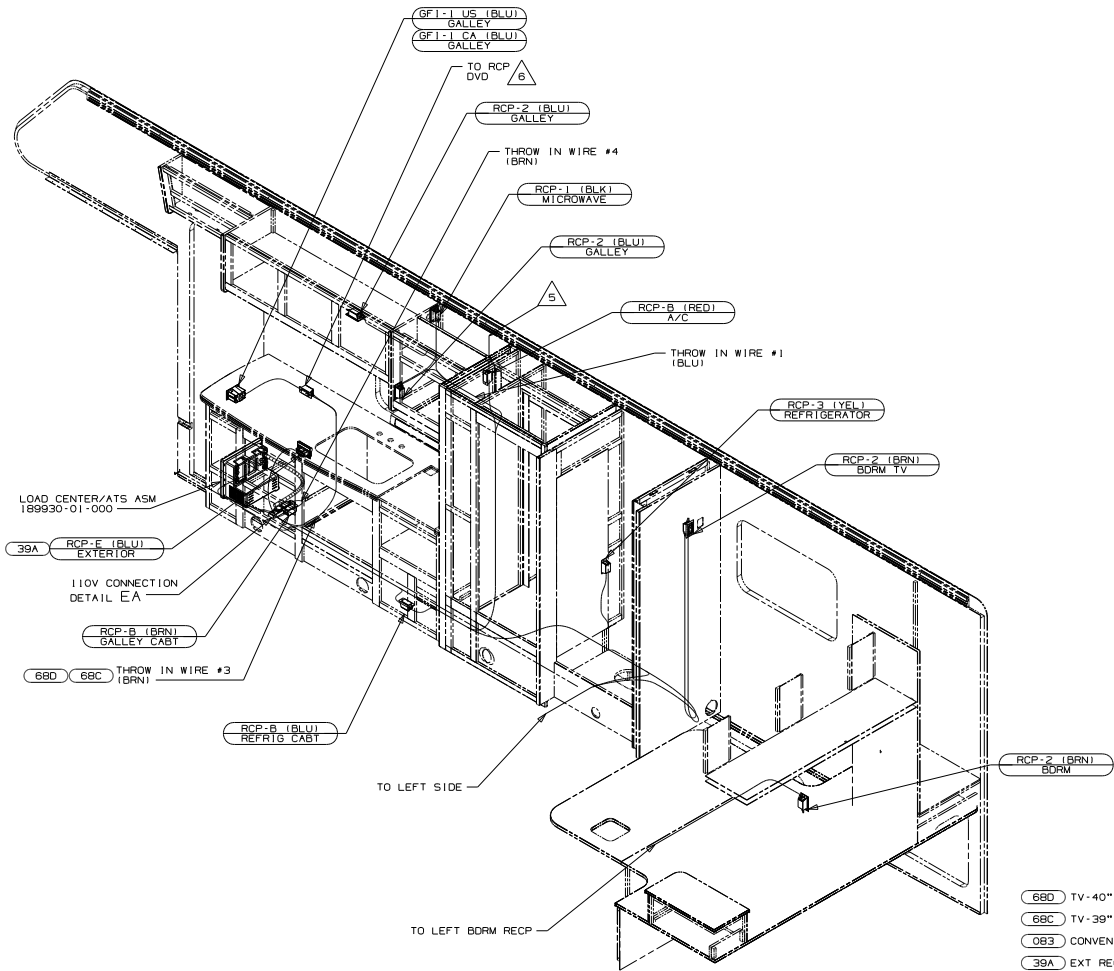
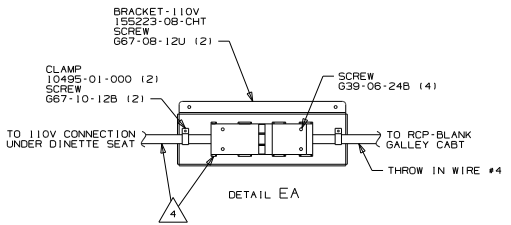
TITLE: WIRING INSTL-BODY, 110V

SHEET 4 PART NO 189931 REV

FOR ELECTRICAL TORQUE SPECIFICATIONS SEE DWG NO. 128783-01-000

FOR ELECTRICAL CALLOUTS SEE DWG NO. 121339-01-000

- NOTES:
- 5 WIRE ROUTED IN FLOOR.
 - 4 WIRE ROUTED THRU ROOF.
 - 3 SEE MANUFACTURERS DIAGRAM.
 - 2 WIRE ROUTED BELOW FLOOR.
 - 1 ALL OUTLETS DOWN STREAM AND INCLUDING THIS OUTLET ARE GROUND FAULT INTERRUPT PROTECTED.



- △ 6 SEE WIRING INST-TV/DVD FOR ADDITIONAL INFORMATION.
 △ 5 WIRE IN ROOF.
 △ 4 CORD AND CONNECTORS ARE PART OF WIRE ASM-CHASSIS.
- ALL GROUND WIRE TO BE COVERED WITH TUBING B041-02-000.
 - ALL 110V WIRE TO BE CLAMPED WITH CLAMP 10497-05-000 WITHIN 200MM OF OUTLET BOXES, USE SCREW 667-10-12B.
 - AT MINIMUM ALL WIRES TO BE SUPPORTED AND SECURED PER CODE REQUIREMENTS. USE CLAMP 10495 OR 10497 OR WIRE TIE B343 OR 108046 AND SCREW 667-XX-XXX OR G56-XX-XXX AS APPROPRIATE FOR INSTALLATION.

331KP

- 680 TV-40" COLOR, STEREO W/REMOTE
- 68C TV-39" COLOR, STEREO W/REMOTE
- 083 CONVENIENCE & APPEARANCE PKG
- 39A EXT RECEPTACLE DPLX 120VAC
- 265 CODES/STANDARDS-CSA/CMVSS
- 1B1 CODES/STANDARDS USA

PART NOS		15 331K/P	
DO NOT SCALE DRAWING			
TITLE WIRING INSTL-BODY, 110V			
SHEET 5	PART NO	189931	REV

FOR ELECTRICAL TORQUE SPECIFICATIONS SEE DWG NO. 128783-01-000

FOR ELECTRICAL CALLOUTS SEE DWG NO. 121339-01-000