



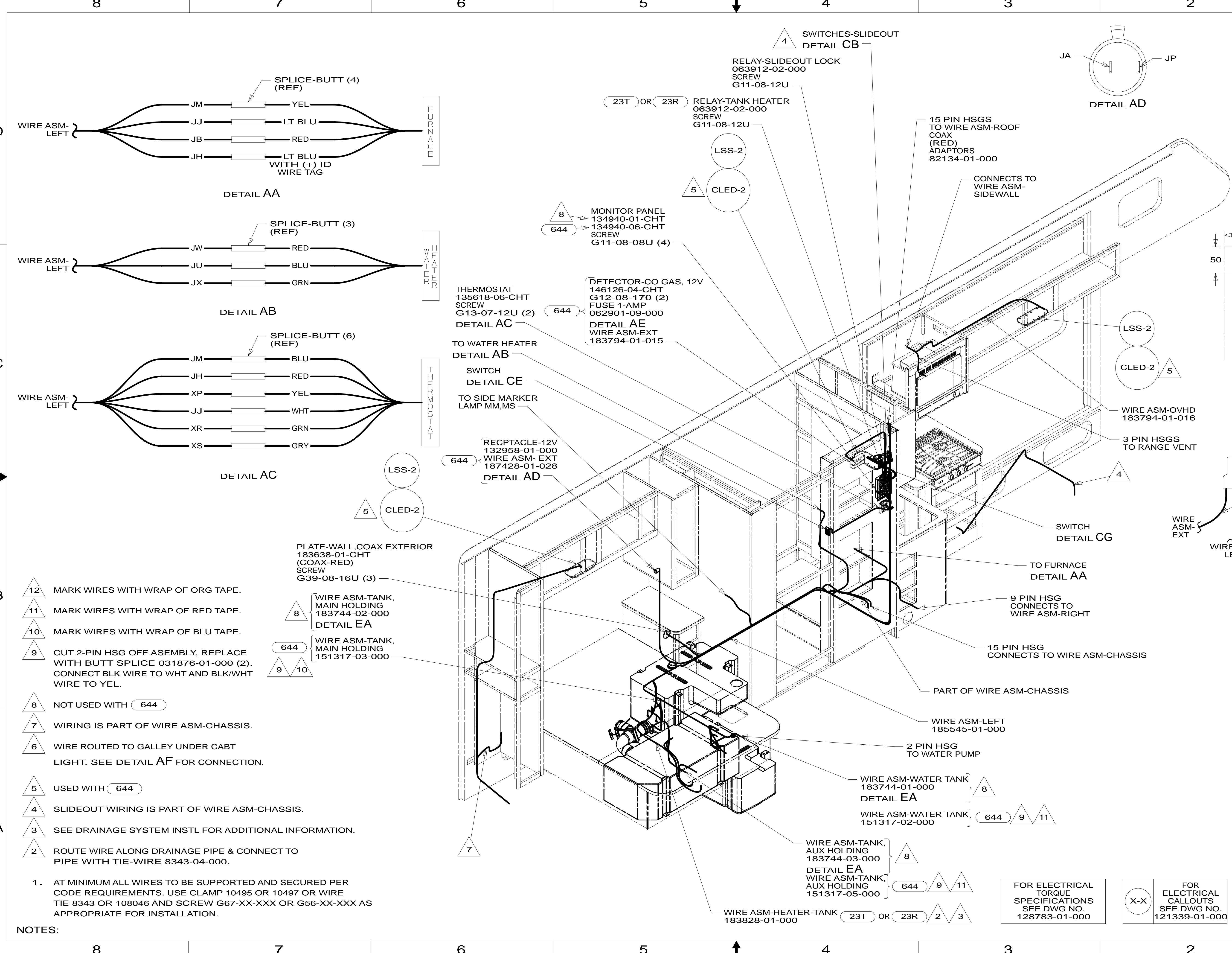
DANGER

Danger of electrical shock, burns or death. Always remove all power sources before attempting any repair, service or diagnostic work. Power can be present from shore power, generator, inverter or battery. All power sources must be disabled and secured before performing any service.



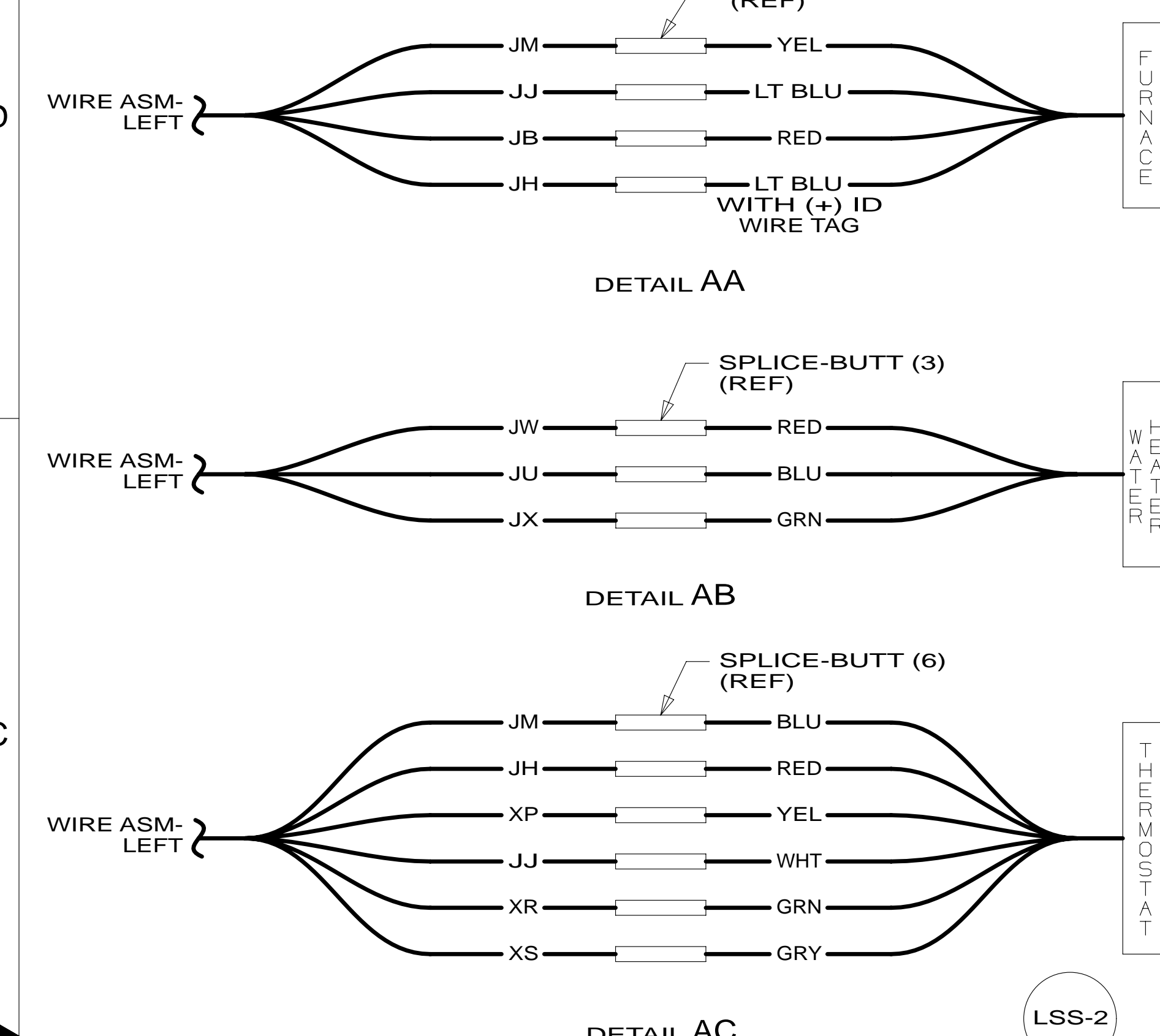
CAUTION

If you lack the skills, tools or equipment to perform diagnostic or repair work leave such work to an authorized Winnebago Industries dealer or other qualified shop.



8
7
6
5
4
3
2

D
C
B
A



NOTES:

- AT MINIMUM ALL WIRES TO BE SUPPORTED AND SECURED PER CODE REQUIREMENTS. USE CLAMP 10495 OR 10497 OR WIRE TIE 8343 OR 108046 AND SCREW G67-XX-XXX OR G56-XX-XXX AS APPROPRIATE FOR INSTALLATION.

12 MARK WIRES WITH WRAP OF ORG TAPE.
 11 MARK WIRES WITH WRAP OF RED TAPE.
 10 MARK WIRES WITH WRAP OF BLU TAPE.
 9 CUT 2-PIN HSG OFF ASSEMBLY, REPLACE WITH BUTT SPLICE 031876-01-000 (2). CONNECT BLK WIRE TO WHT AND BLK/WHT WIRE TO YEL.
 8 NOT USED WITH 644
 7 WIRING IS PART OF WIRE ASM-CHASSIS.
 6 WIRE ROUTED TO GALLEY UNDER CABT LIGHT. SEE DETAIL AF FOR CONNECTION.
 5 USED WITH 644
 4 SLIDEOUT WIRING IS PART OF WIRE ASM-CHASSIS.
 3 SEE DRAINAGE SYSTEM INSTL FOR ADDITIONAL INFORMATION.
 2 ROUTE WIRE ALONG DRAINAGE PIPE & CONNECT TO PIPE WITH TIE-WIRE 8343-04-000.

SWITCHES-SLIDEOUT
 DETAIL CB

RELAY-SLIDEOUT LOCK
 063912-02-000
 SCREW
 G11-08-12U

RELAY-TANK HEATER
 063912-02-000
 SCREW
 G11-08-12U

15 PIN HSGS TO WIRE ASM-ROOF COAX (RED) ADAPTORS 82134-01-000

CONNECTS TO WIRE ASM-SIDEWALL

MONITOR PANEL
 134940-01-CHT
 134940-06-CHT
 SCREW
 G11-08-08U (4)

DETECTOR-CO GAS, 12V
 146126-04-CHT
 G12-08-170 (2)
 FUSE 1-AMP
 062901-09-000

DETAIL AE WIRE ASM-EXT 183794-01-015

THERMOSTAT
 135618-06-CHT
 SCREW
 G13-07-12U (2)

DETAIL AC

TO WATER HEATER
 DETAIL AB

SWITCH
 DETAIL CE

TO SIDE MARKER LAMP MM,MS

RECPTACLE-12V
 132958-01-000
 WIRE ASM- EXT
 187428-01-028
 DETAIL AD

PLATE-WALL,COAX EXTERIOR
 183638-01-CHT
 (COAX-RED)
 SCREW
 G39-08-16U (3)

WIRE ASM-TANK, MAIN HOLDING
 183744-02-000
 DETAIL EA

WIRE ASM-TANK, MAIN HOLDING
 151317-03-000

WIRE ASM-LEFT 185545-01-000

2 PIN HSG TO WATER PUMP

WIRE ASM-WATER TANK
 183744-01-000
 DETAIL EA

WIRE ASM-WATER TANK
 151317-02-000

WIRE ASM-TANK, AUX HOLDING
 183744-03-000
 DETAIL EA

WIRE ASM-TANK, AUX HOLDING
 151317-05-000

WIRE ASM-HEATER-TANK
 183828-01-000

SWITCH
 DETAIL CG

TO FURNACE
 DETAIL AA

9 PIN HSG CONNECTS TO WIRE ASM-RIGHT

15 PIN HSG CONNECTS TO WIRE ASM-CHASSIS

PART OF WIRE ASM-CHASSIS

WIRE ASM-OVHD
 183794-01-016

3 PIN HSGS TO RANGE VENT

CONNECTS TO WIRE ASM-SIDEWALL

DRILL HOLE IN WALL FOR WIRE ROUTING

CONNECT YEL WIRE TO YEL AND BLK WIRE TO WHT ON CO DETECTOR

WIRE ASM-EXT

DETAIL AE

DETAIL AF

WIRE ASM-EXT

WIRE ASM-LEFT

WIRE ASM-EXT

WIRE ASM-LEFT

TO FURNACE
 DETAIL AA

9 PIN HSG CONNECTS TO WIRE ASM-RIGHT

15 PIN HSG CONNECTS TO WIRE ASM-CHASSIS

PART OF WIRE ASM-CHASSIS

WIRE ASM-LEFT
 185545-01-000

2 PIN HSG TO WATER PUMP

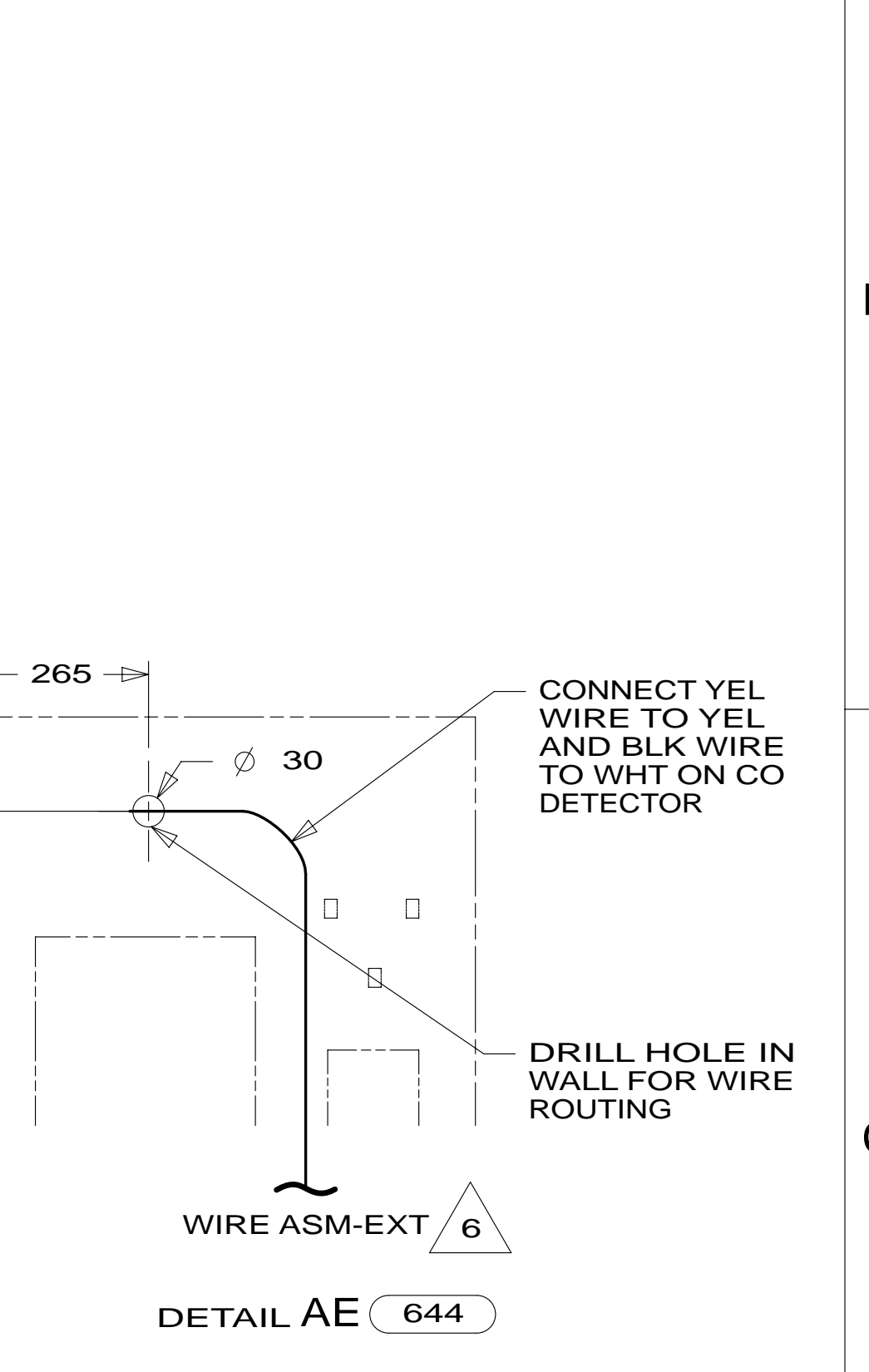
WIRE ASM-WATER TANK
 183744-01-000
 DETAIL EA

WIRE ASM-WATER TANK
 151317-02-000

WIRE ASM-TANK, AUX HOLDING
 183744-03-000
 DETAIL EA

WIRE ASM-TANK, AUX HOLDING
 151317-05-000

WIRE ASM-HEATER-TANK
 183828-01-000



644 GREAT ALASKAN RENTAL PACKAGE
 23R DRAINAGE SYSTEM/HEAT-PREP
 23T DRAINAGE SYSTEM-HEATED
 265 CODES/STANDARDS-CSA/CMVSS
 1B1 CODES/STANDARDS USA

1B1 265

WINNEBAGO

COPYRIGHT 2014 WINNEBAGO INDUSTRIES, INC.

DFTR	ORIG. DATE
CHKR	ALL DIMENSIONS ARE IN MILLIMETERS
P.E.	FIRST USED
M.E.	15 331H
DSNR	

UNSPECIFIED TOLERANCES ARE:
 WHOLE DIM (X) : 3
 ONE-PLACE (X.X) : 1.5
 TWO-PLACE (X.XX) : 0.50
 ANGLE : 1°

THIRD ANGLE PROJECTION

DO NOT SCALE DRAWING REFER TO ES0018 FOR FASTENER TIGHTENING GUIDELINES

TITLE: WIRING INSTL-BODY,12V

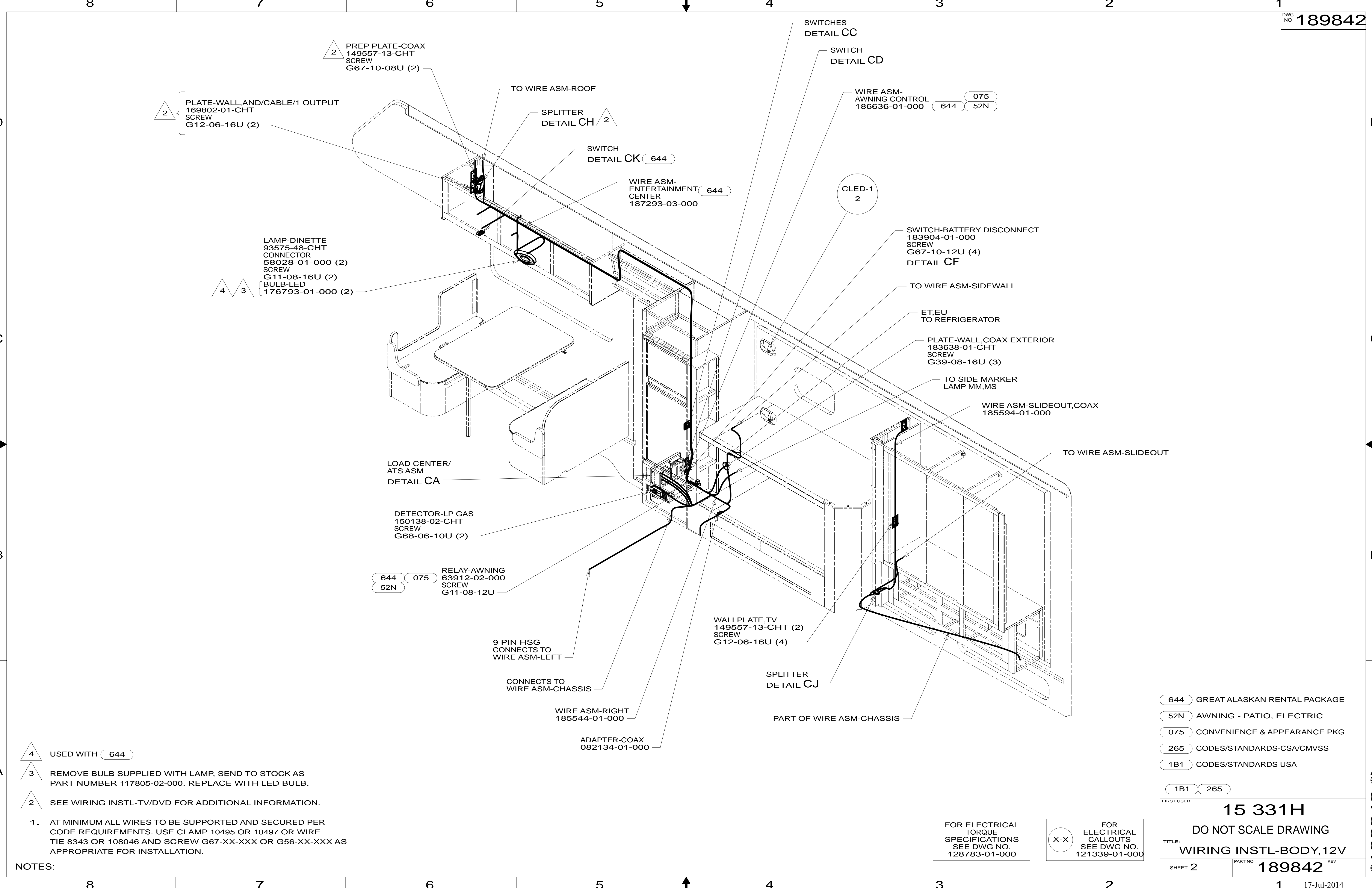
SHEET 1 OF 5 PART NO 189842 REV

REF: 1 17-Jul-2014

FOR ELECTRICAL TORQUE SPECIFICATIONS SEE DWG NO. 128783-01-000

FOR ELECTRICAL CALLOUTS SEE DWG NO. 121339-01-000

* 189842



- 4 USED WITH 644
- 3 REMOVE BULB SUPPLIED WITH LAMP, SEND TO STOCK AS PART NUMBER 117805-02-000. REPLACE WITH LED BULB.
- 2 SEE WIRING INSTL-TV/DVD FOR ADDITIONAL INFORMATION.

1. AT MINIMUM ALL WIRES TO BE SUPPORTED AND SECURED PER CODE REQUIREMENTS. USE CLAMP 10495 OR 10497 OR WIRE TIE 8343 OR 108046 AND SCREW G67-XX-XXX OR G56-XX-XXX AS APPROPRIATE FOR INSTALLATION.

NOTES:

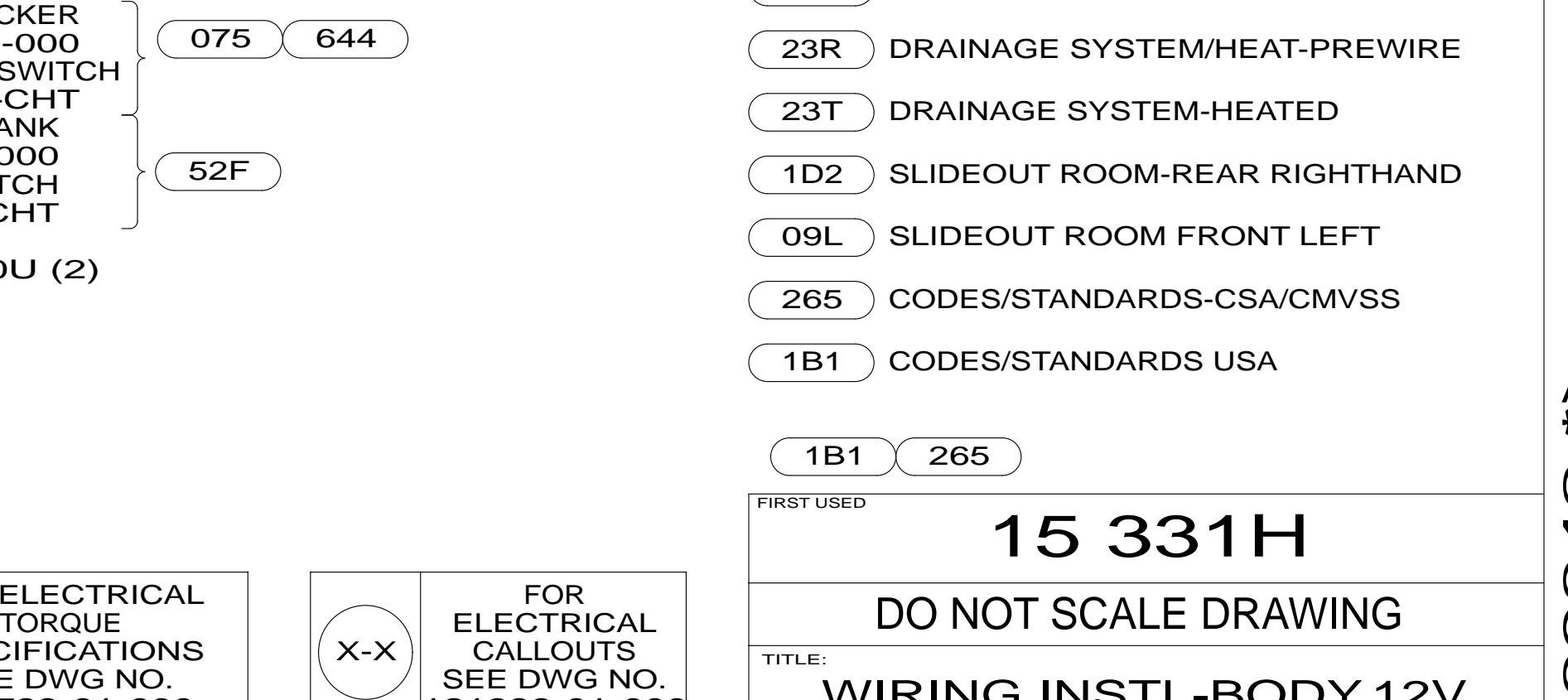
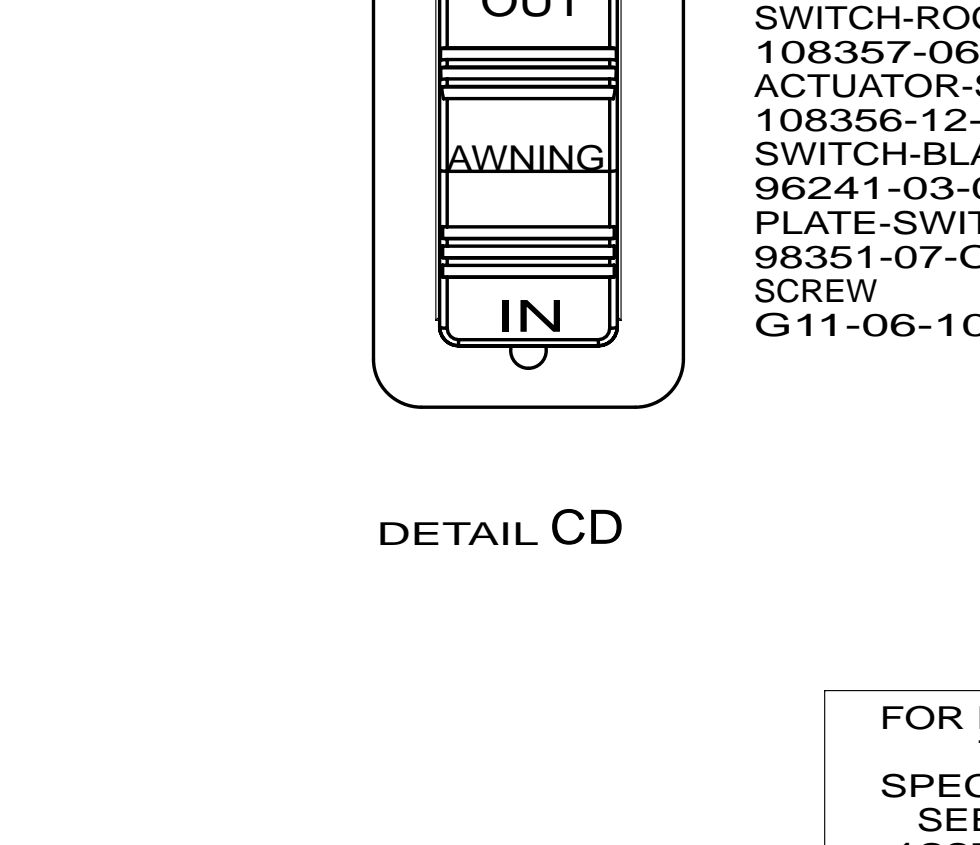
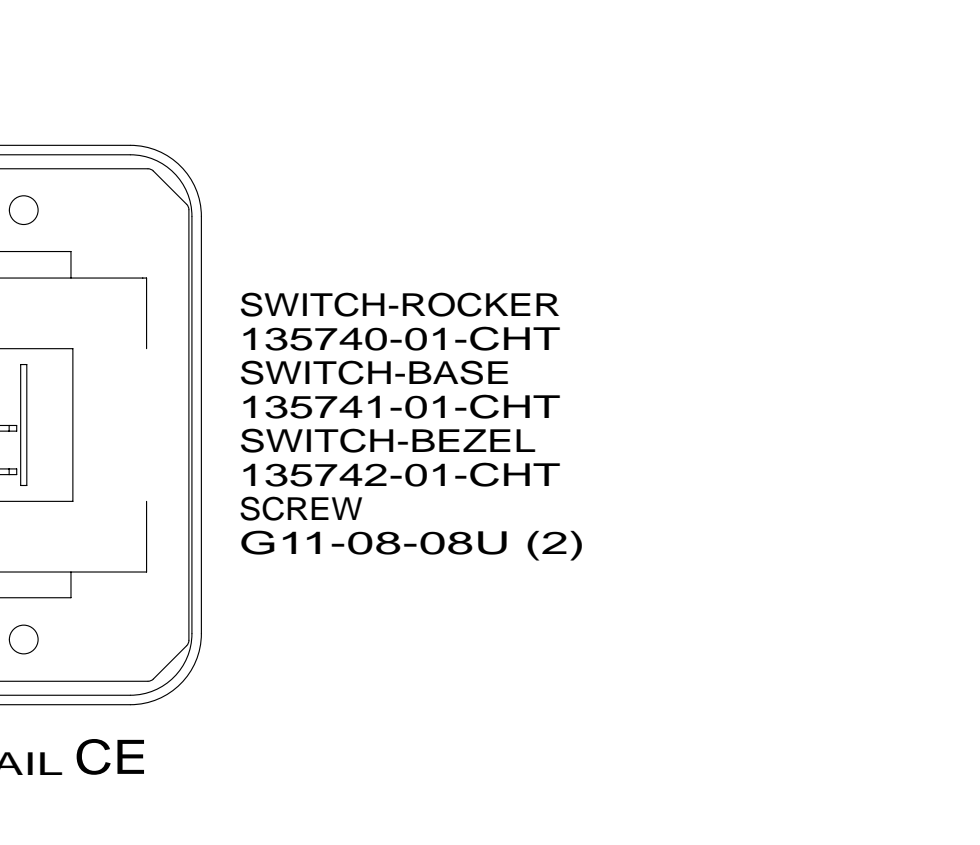
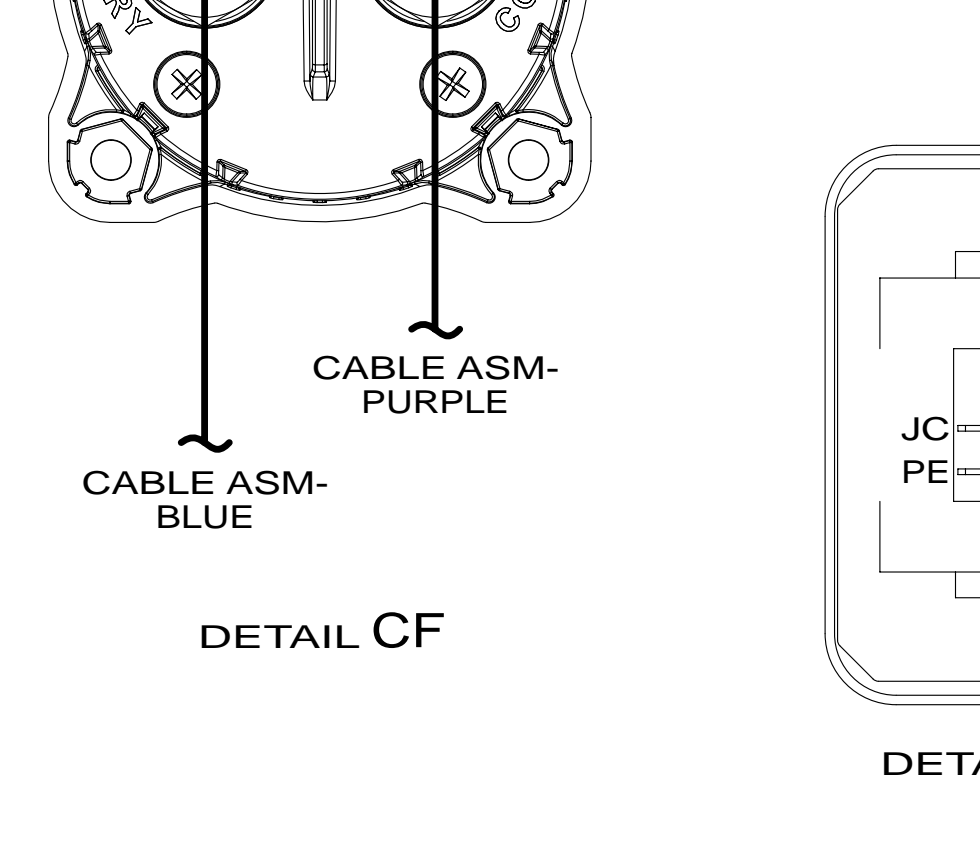
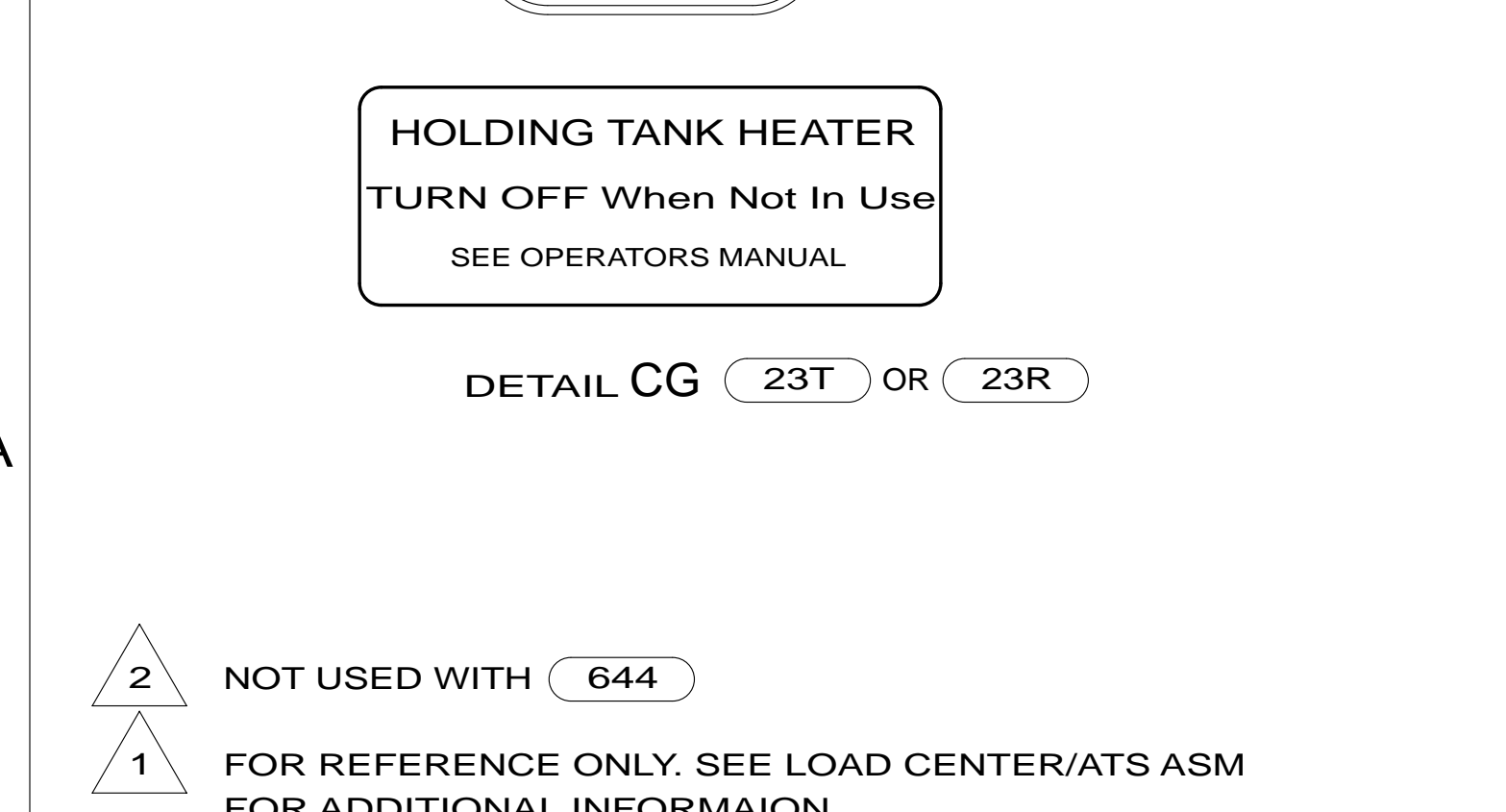
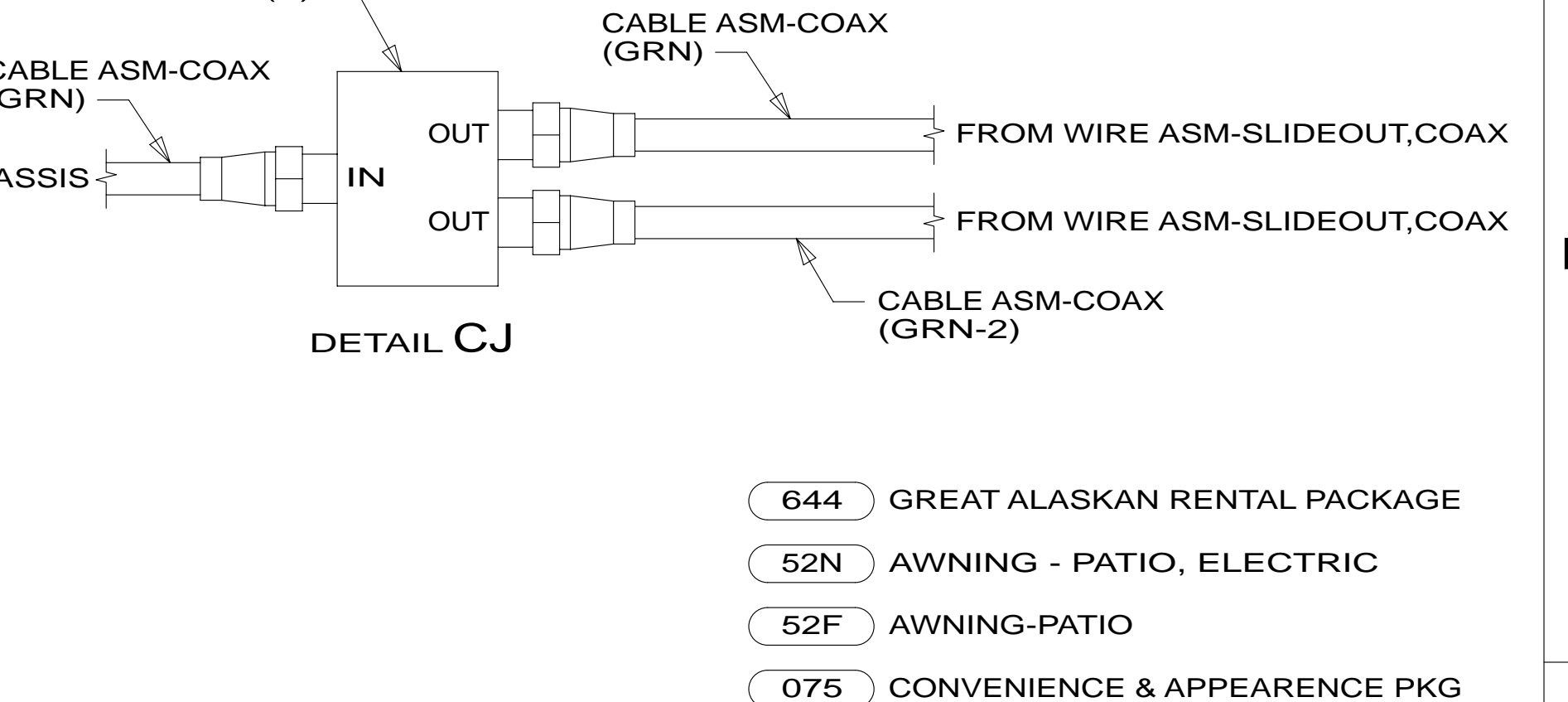
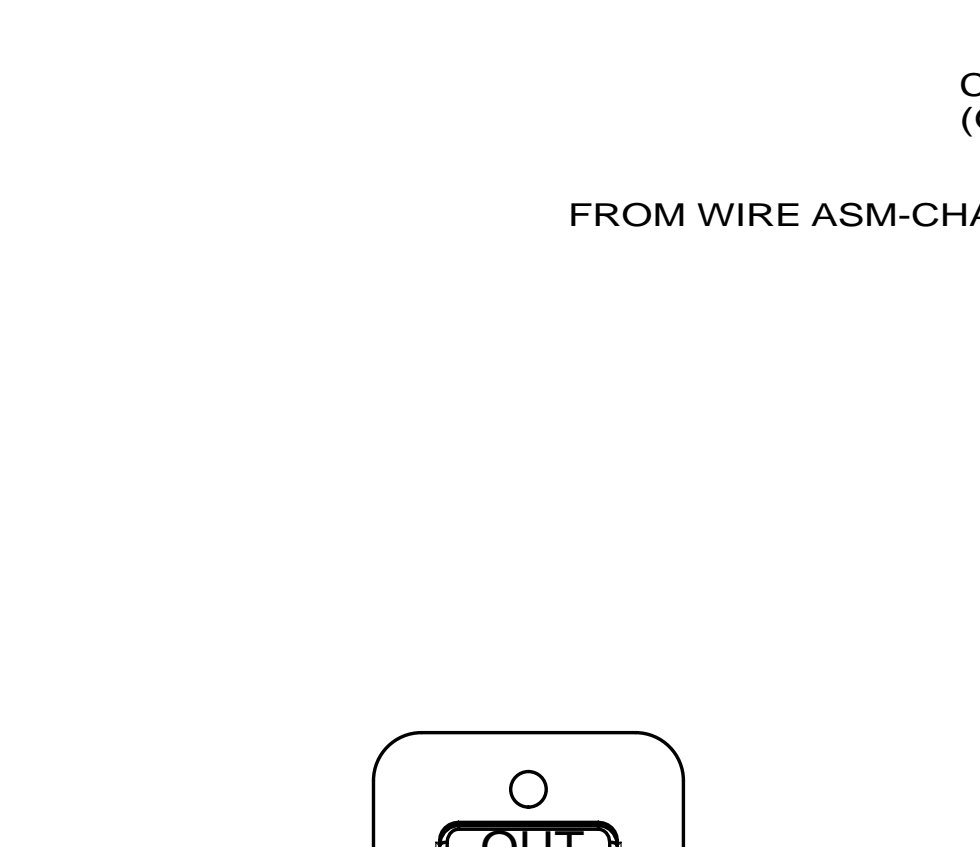
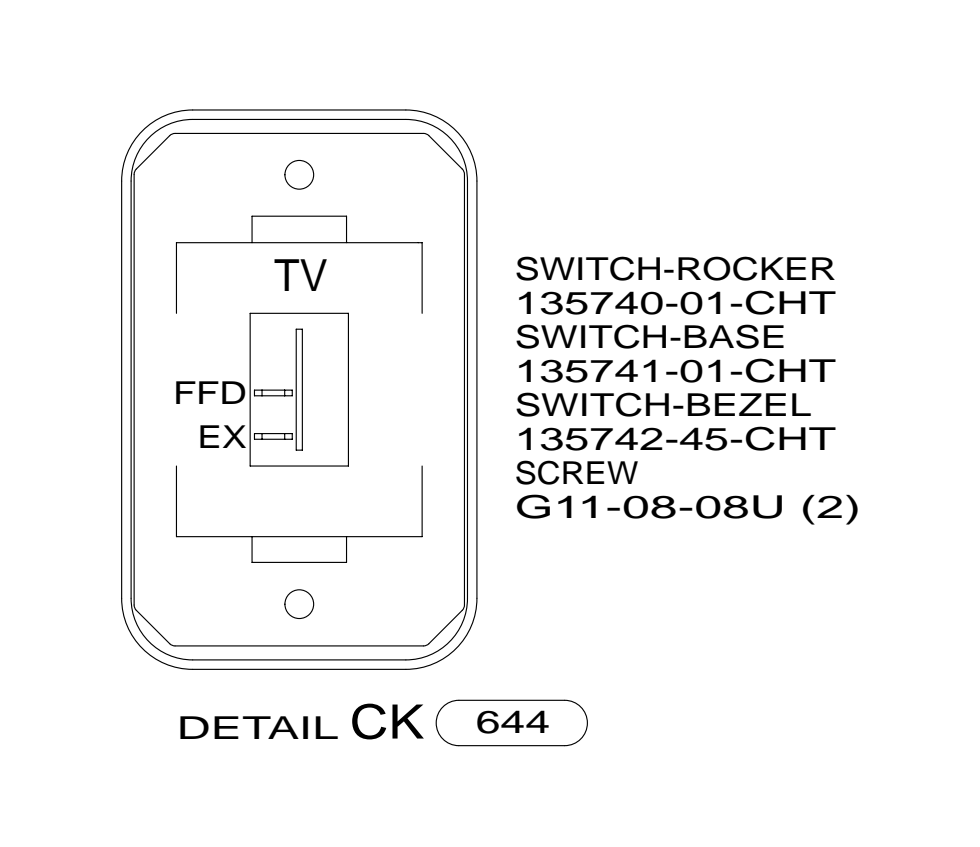
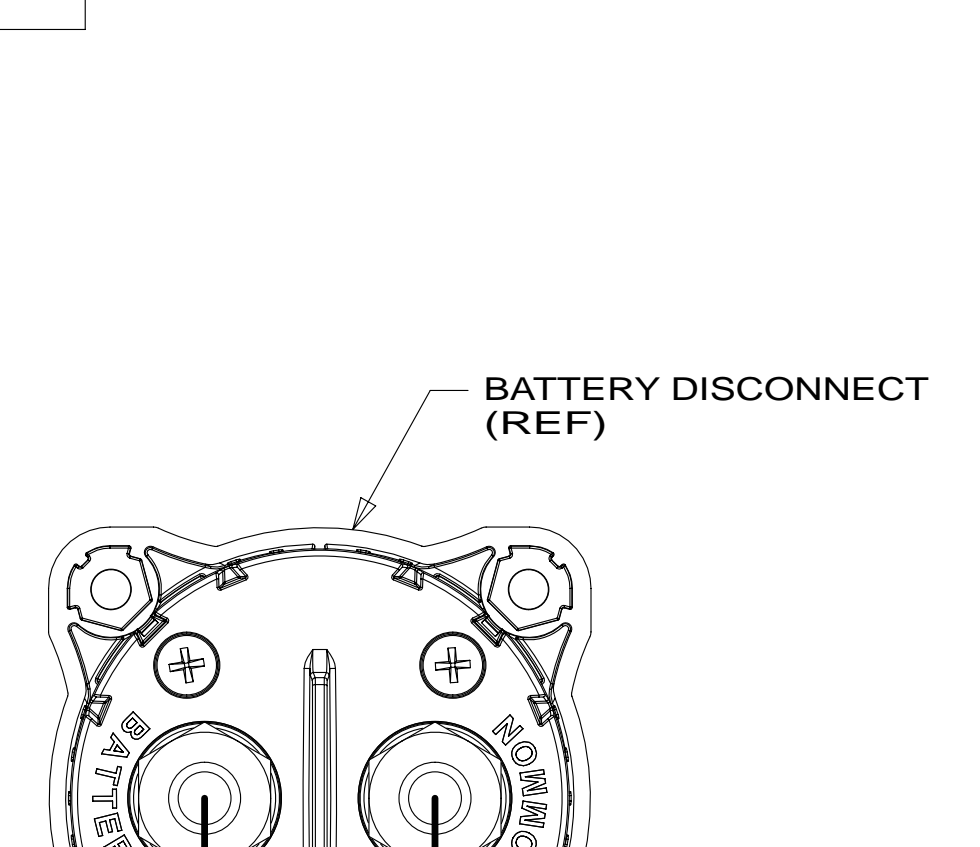
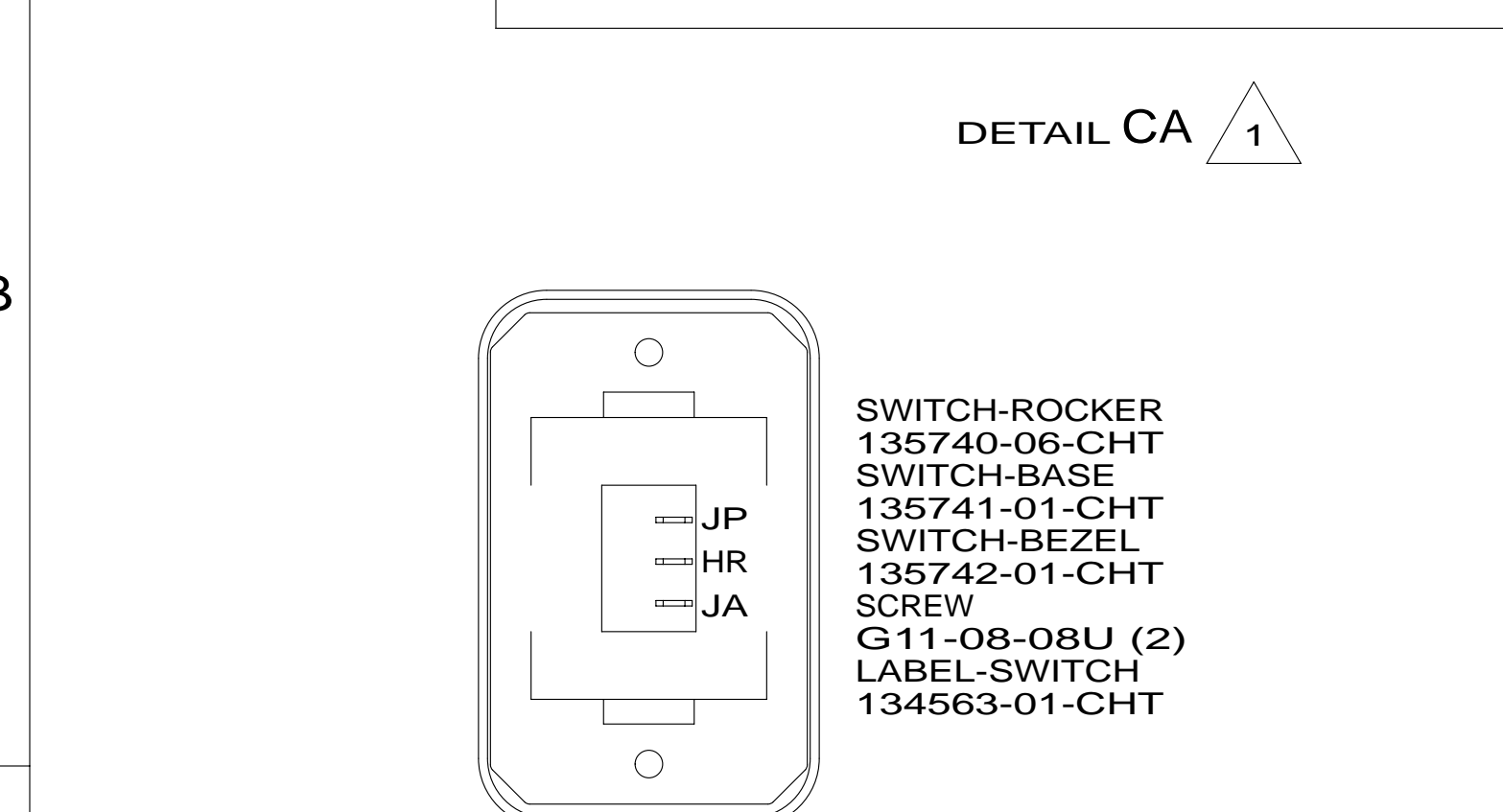
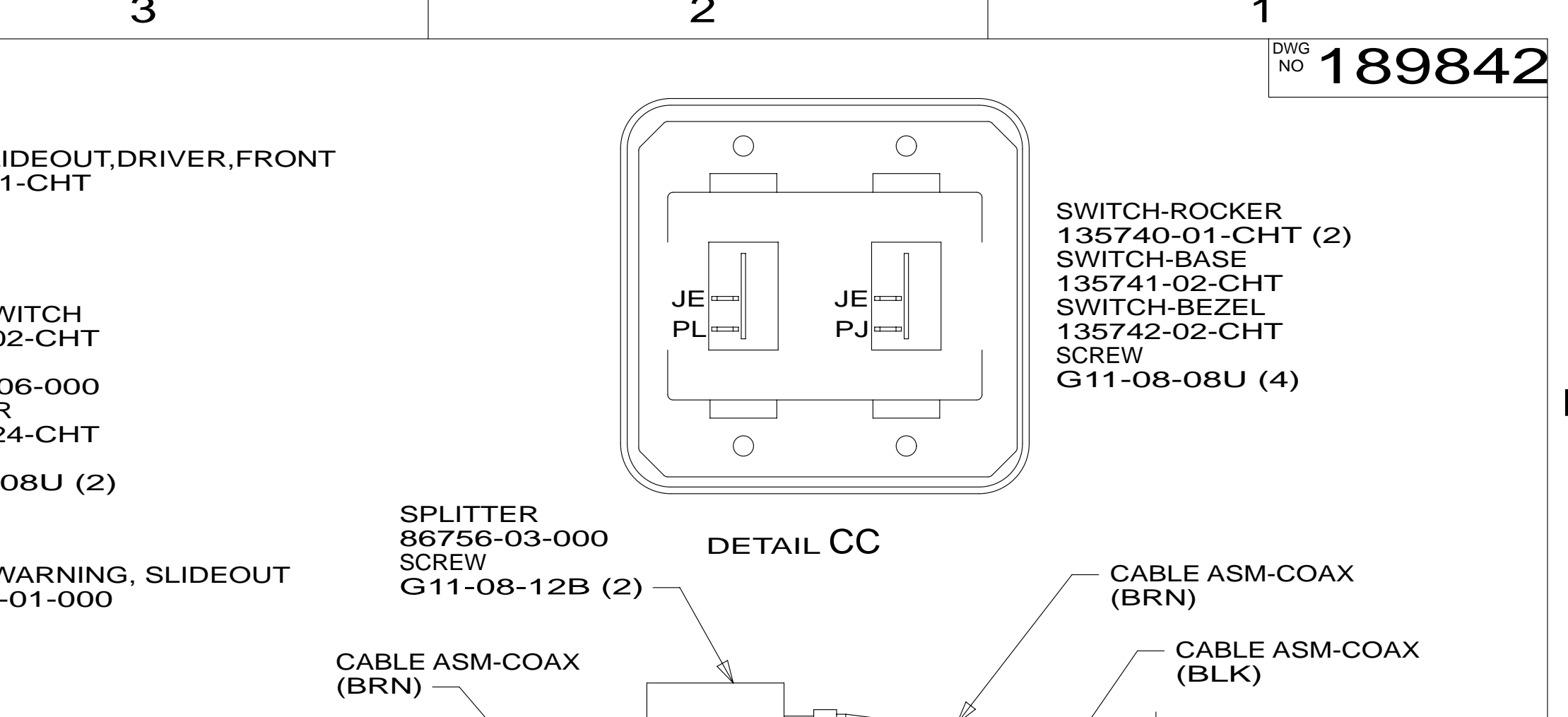
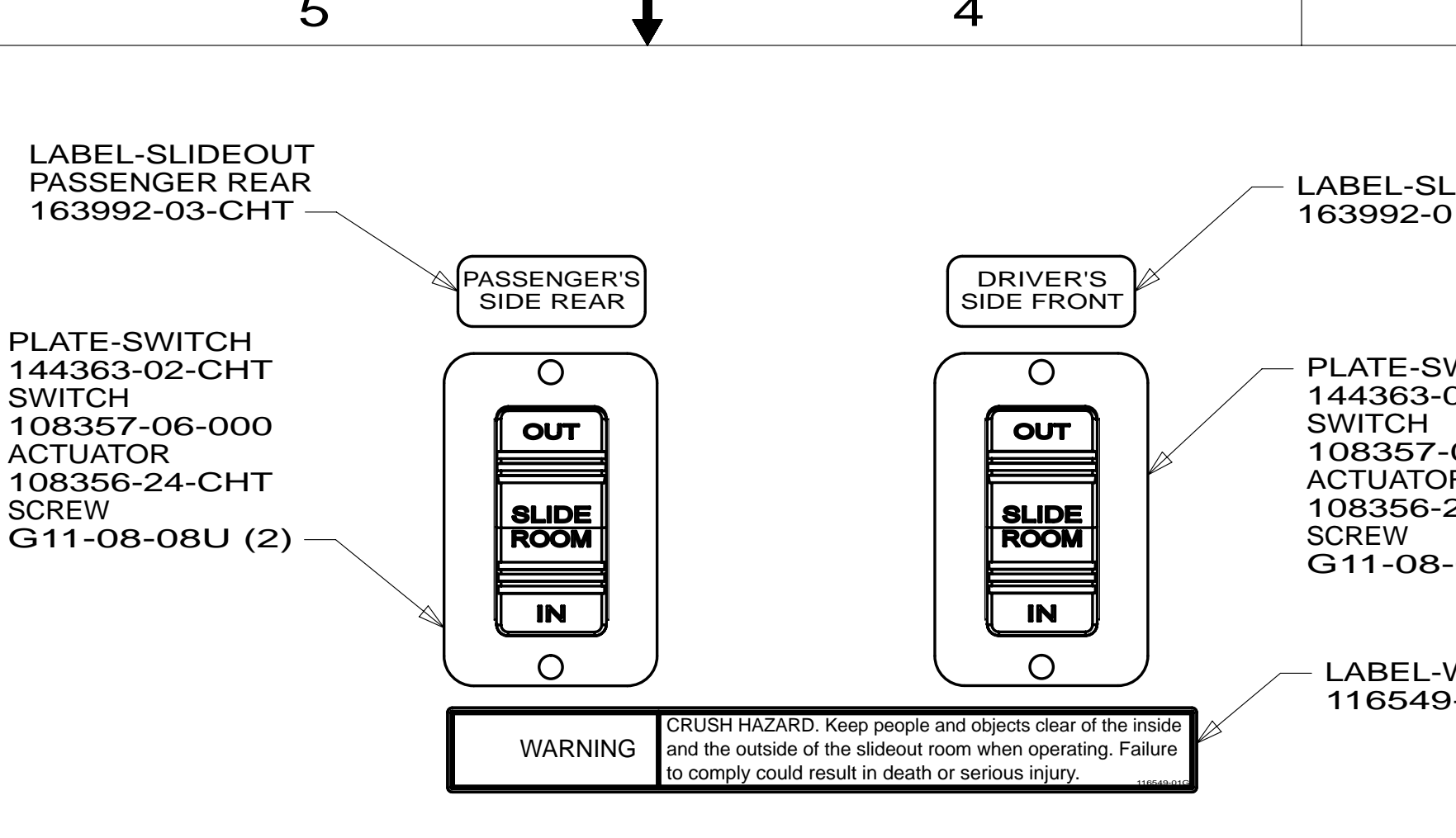
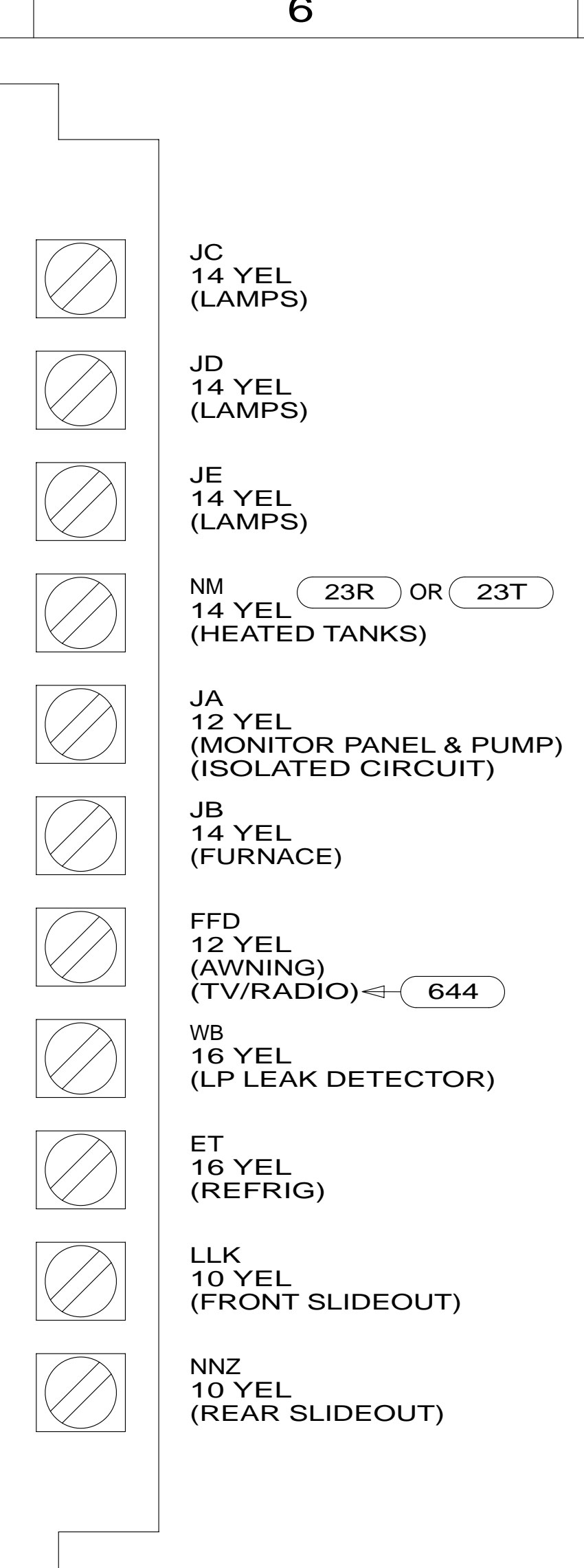
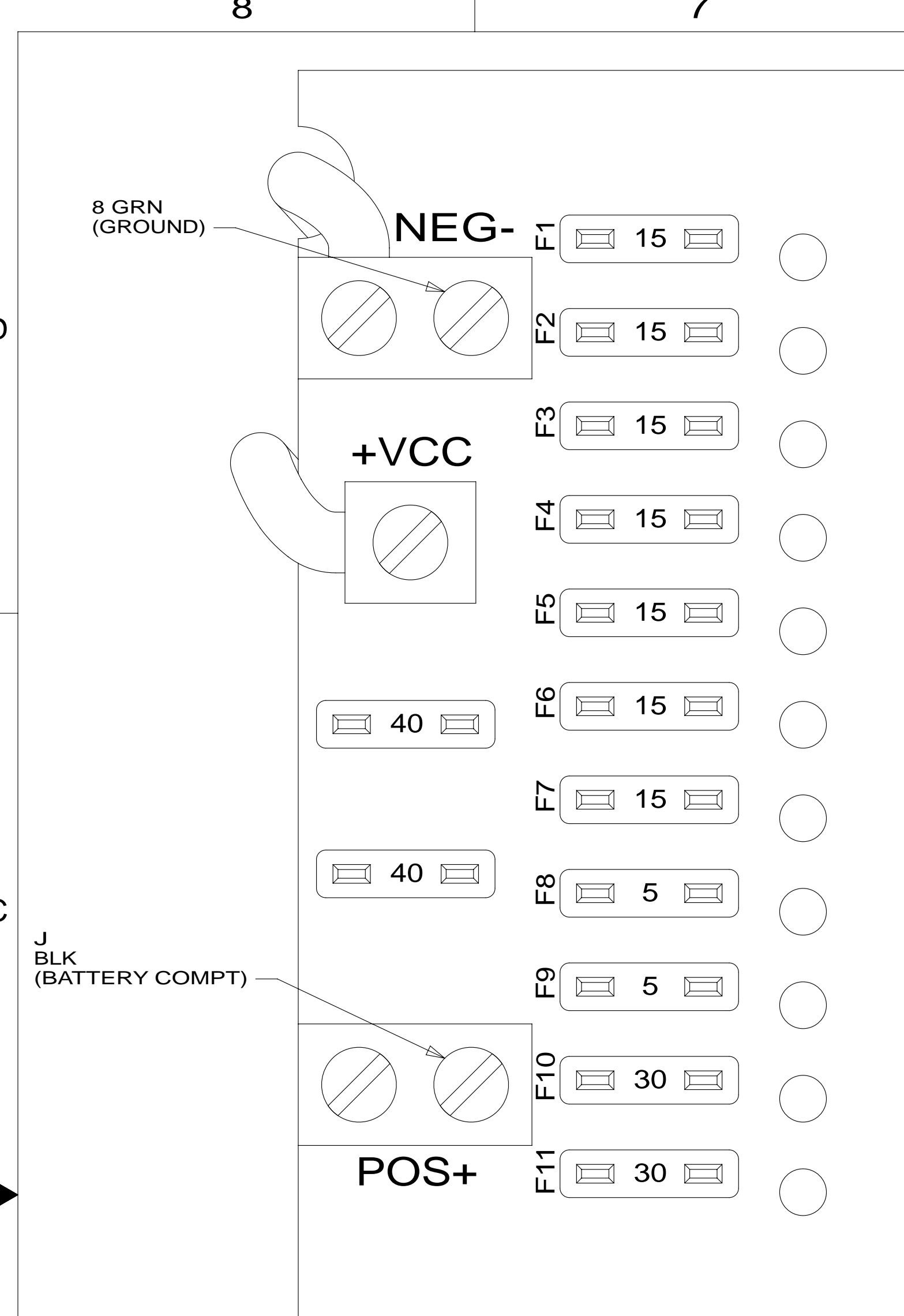
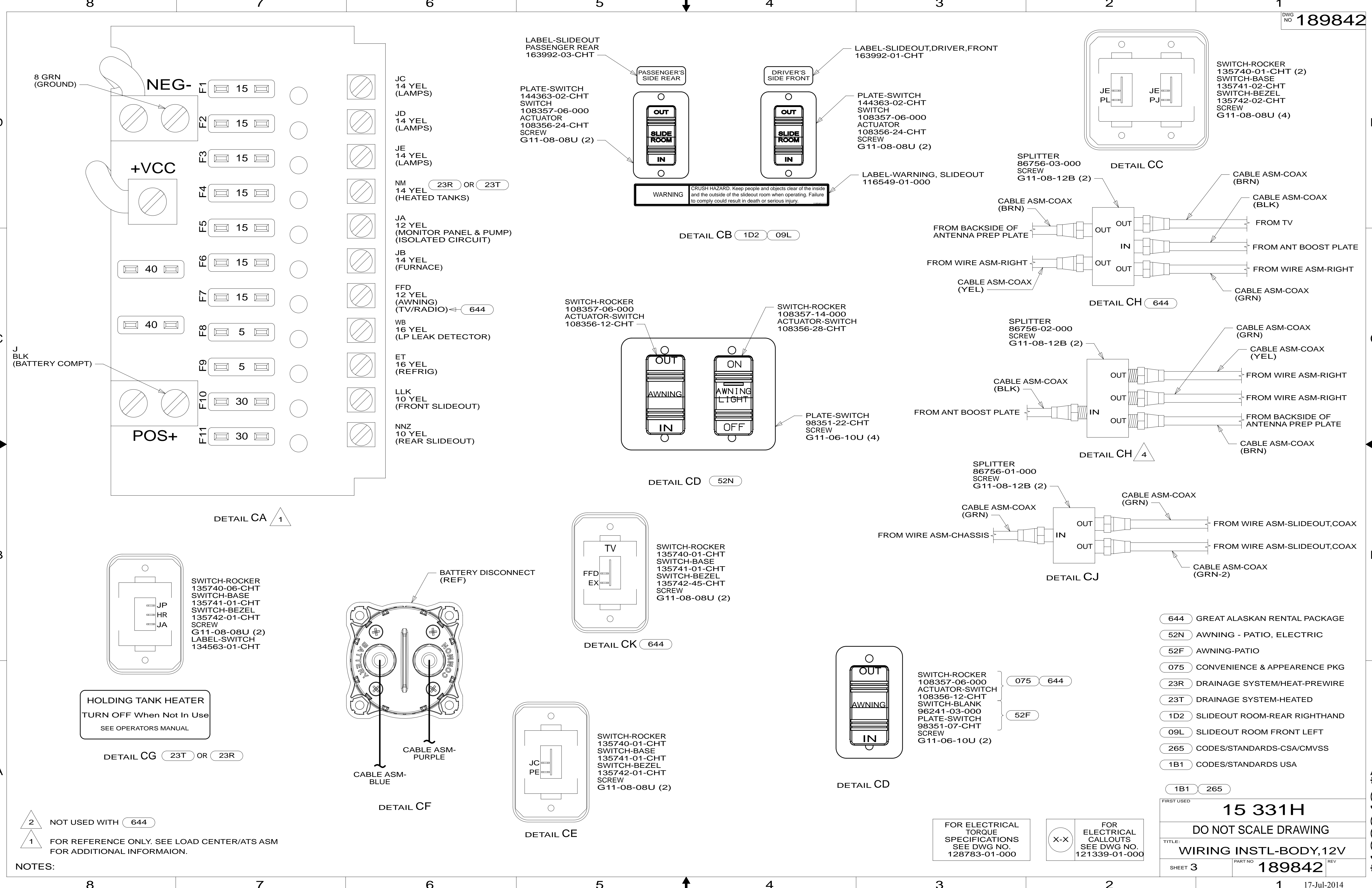
- 644 GREAT ALASKAN RENTAL PACKAGE
- 52N AWNING - PATIO, ELECTRIC
- 075 CONVENIENCE & APPEARANCE PKG
- 265 CODES/STANDARDS-CSA/CMVSS
- 1B1 CODES/STANDARDS USA

FIRST USED	15 331H
DO NOT SCALE DRAWING	
TITLE: WIRING INSTL-BODY, 12V	
SHEET 2	PART NO 189842 REV

FOR ELECTRICAL TORQUE SPECIFICATIONS SEE DWG NO. 128783-01-000

FOR ELECTRICAL CALLOUTS SEE DWG NO. 121339-01-000

* 189842 *



NOTES:
 2 NOT USED WITH 644
 1 FOR REFERENCE ONLY. SEE LOAD CENTER/ATS ASM FOR ADDITIONAL INFORMATION.

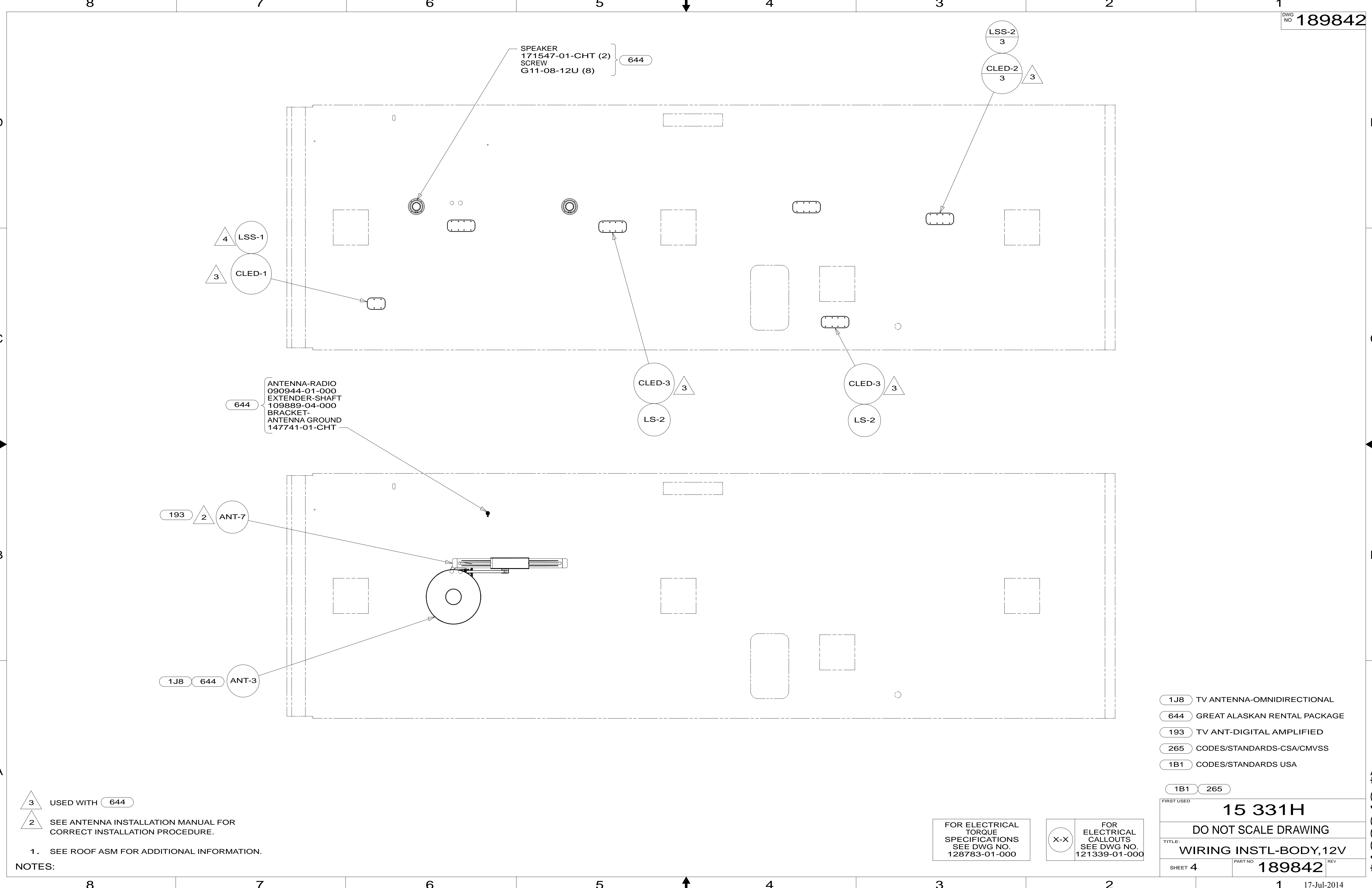
FOR ELECTRICAL TORQUE SPECIFICATIONS SEE DWG NO. 128783-01-000

X-X FOR ELECTRICAL CALLOUTS SEE DWG NO. 121339-01-000

- 644 GREAT ALASKAN RENTAL PACKAGE
- 52N AWNING - PATIO, ELECTRIC
- 52F AWNING-PATIO
- 075 CONVENIENCE & APPEARANCE PKG
- 23R DRAINAGE SYSTEM/HEAT-PREWIRE
- 23T DRAINAGE SYSTEM-HEATED
- 1D2 SLIDEOUT ROOM-REAR RIGHTHAND
- 09L SLIDEOUT ROOM FRONT LEFT
- 265 CODES/STANDARDS-CSA/CMVSS
- 1B1 CODES/STANDARDS USA

FIRST USED	15 331H	
DO NOT SCALE DRAWING		
TITLE: WIRING INSTL-BODY, 12V		
SHEET 3	PART NO 189842	REV
		17-Jul-2014

* 189842 A *



3 USED WITH 644
 2 SEE ANTENNA INSTALLATION MANUAL FOR CORRECT INSTALLATION PROCEDURE.

NOTES:
 1. SEE ROOF ASM FOR ADDITIONAL INFORMATION.

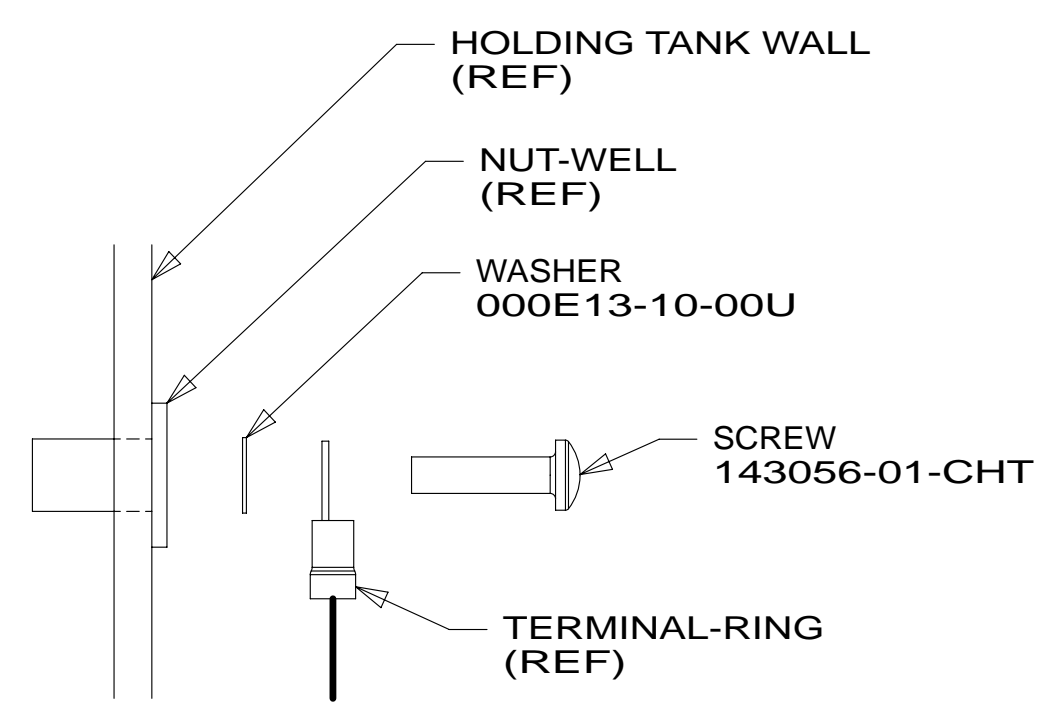
FOR ELECTRICAL TORQUE SPECIFICATIONS SEE DWG NO. 128783-01-000

FOR ELECTRICAL CALLOUTS SEE DWG NO. 121339-01-000

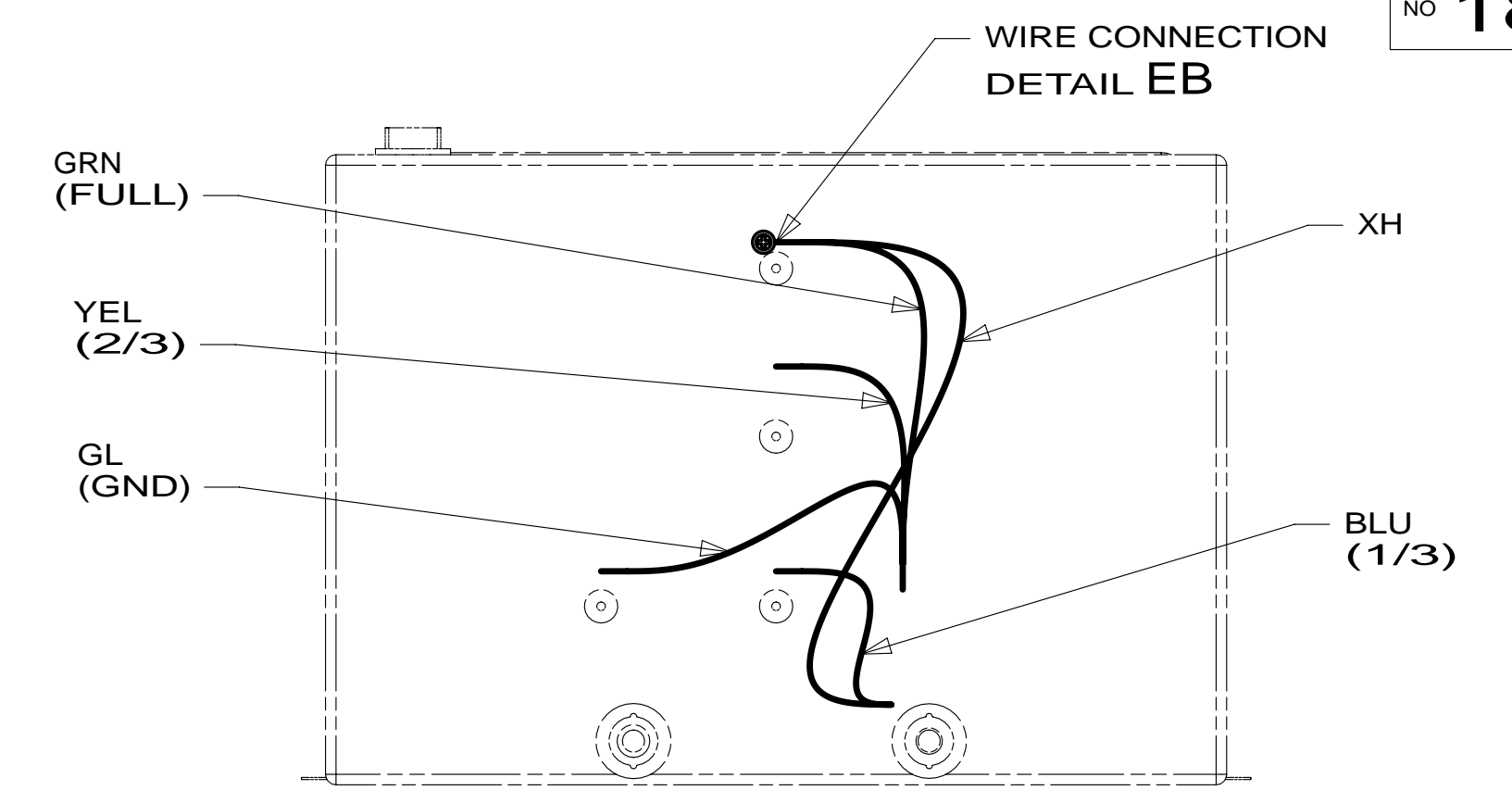
- 1J8 TV ANTENNA-OMNIDIRECTIONAL
- 644 GREAT ALASKAN RENTAL PACKAGE
- 193 TV ANT-DIGITAL AMPLIFIED
- 265 CODES/STANDARDS-CSA/CMVSS
- 1B1 CODES/STANDARDS USA

FIRST USED	15 331H	
TITLE:	DO NOT SCALE DRAWING	
SHEET 4	PART NO 189842	REV

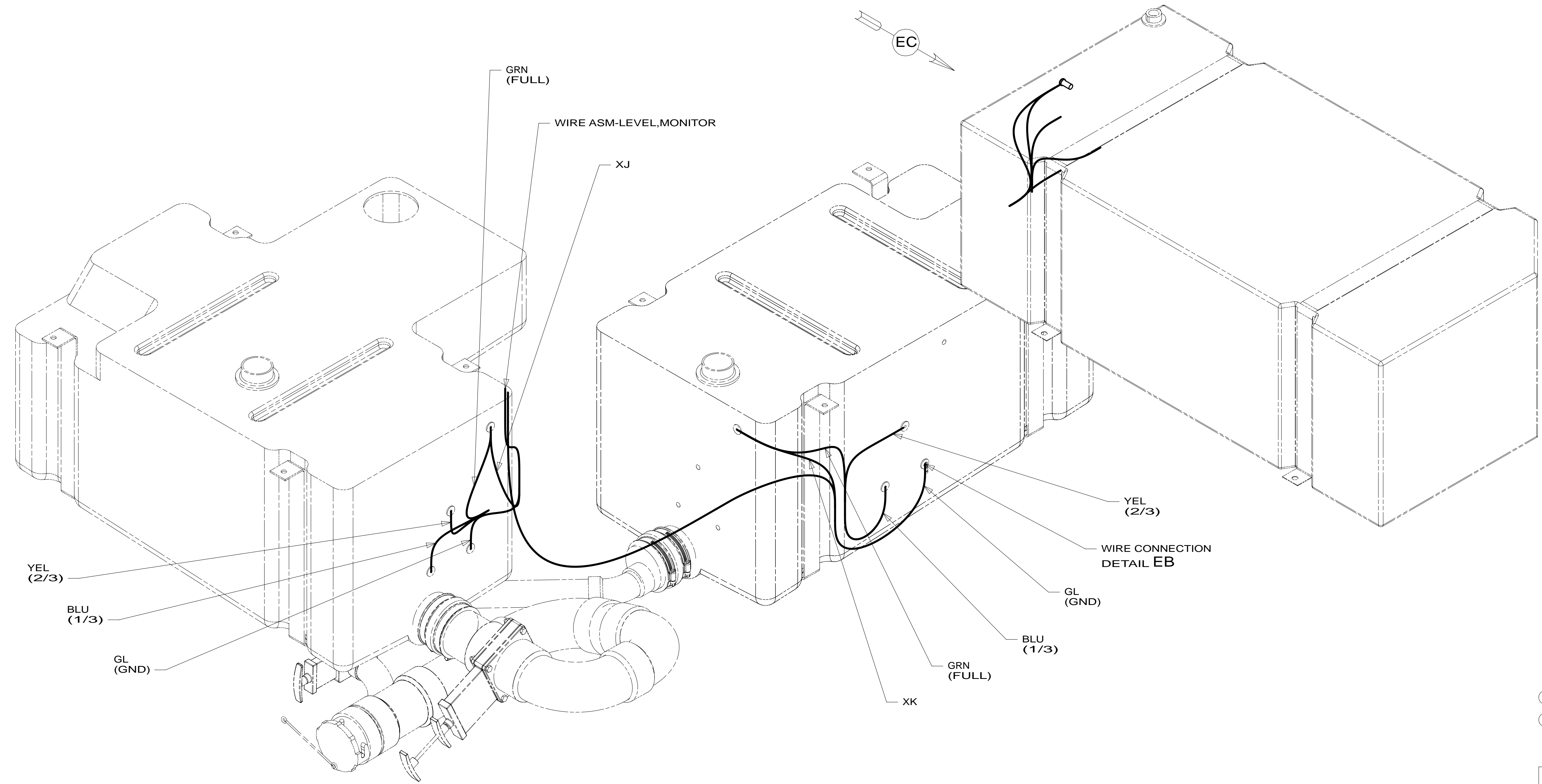
* 189842 * A



DETAIL EB 1



VIEW EC



DETAIL EA

1 TYPICAL WIRE ATTACHMENT AT ALL LEVEL PROBES (4 EACH) FOR WATER, MAIN, AND AUX HOLDING TANKS.

NOTES:

- 265 CODES/STANDARDS-CSA/CMVSS
- 1B1 CODES/STANDARDS USA
- 1B1 265

FOR ELECTRICAL TORQUE SPECIFICATIONS SEE DWG NO. 128783-01-000

X-X FOR ELECTRICAL CALLOUTS SEE DWG NO. 121339-01-000

FIRST USED	
15 331H	
DO NOT SCALE DRAWING	
TITLE: WIRING INSTL-BODY, 12V	
SHEET 5	PART NO. 189842 REV
1 17-Jul-2014	

* 189842 *