



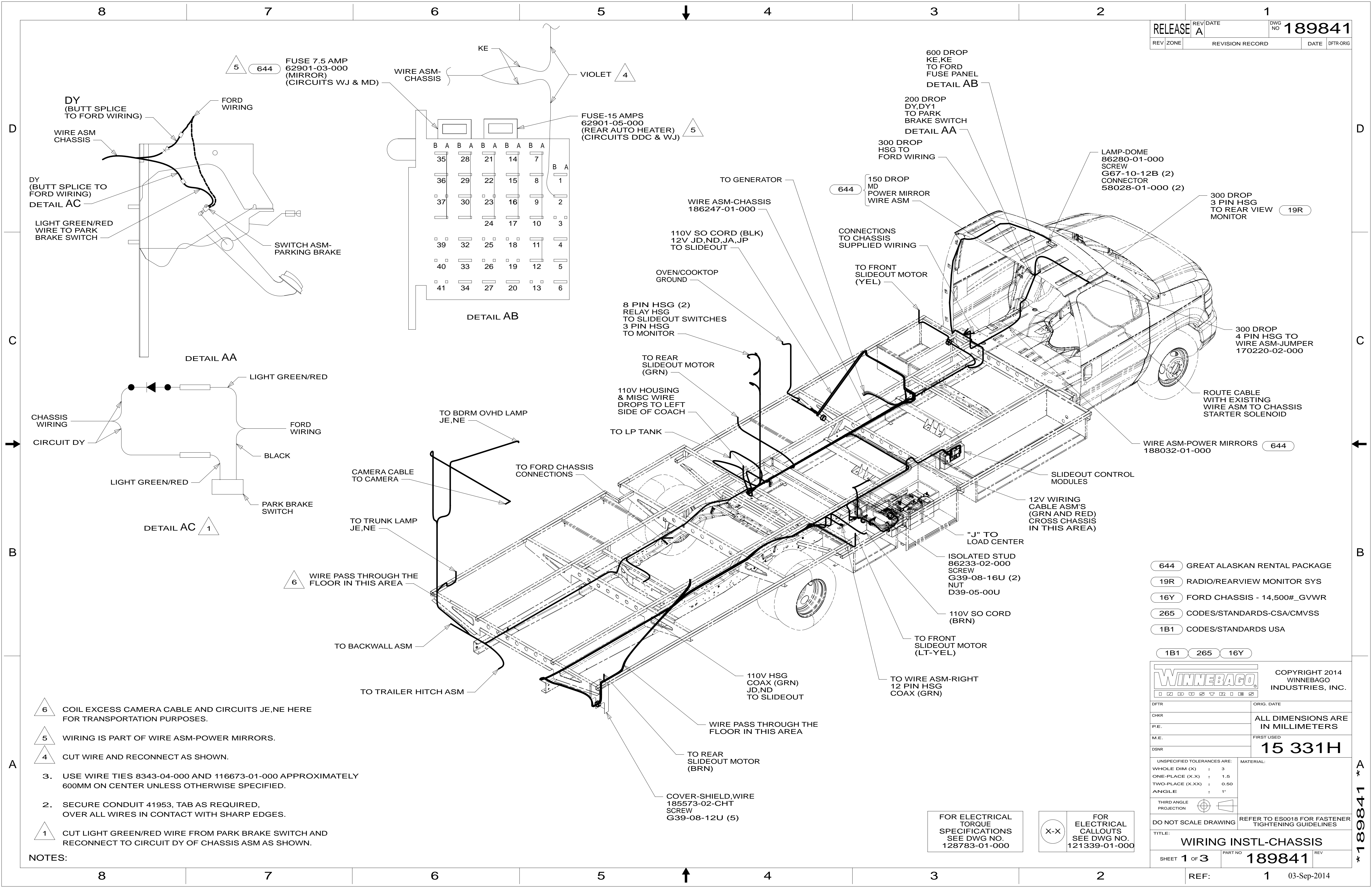
DANGER

Danger of electrical shock, burns or death. Always remove all power sources before attempting any repair, service or diagnostic work. Power can be present from shore power, generator, inverter or battery. All power sources must be disabled and secured before performing any service.



CAUTION

If you lack the skills, tools or equipment to perform diagnostic or repair work leave such work to an authorized Winnebago Industries dealer or other qualified shop.



- NOTES:
- 1 CUT LIGHT GREEN/RED WIRE FROM PARK BRAKE SWITCH AND RECONNECT TO CIRCUIT DY OF CHASSIS ASM AS SHOWN.
 - 2 SECURE CONDUIT 41953, TAB AS REQUIRED, OVER ALL WIRES IN CONTACT WITH SHARP EDGES.
 - 3 USE WIRE TIES 8343-04-000 AND 116673-01-000 APPROXIMATELY 600MM ON CENTER UNLESS OTHERWISE SPECIFIED.
 - 4 CUT WIRE AND RECONNECT AS SHOWN.
 - 5 WIRING IS PART OF WIRE ASM-POWER MIRRORS.
 - 6 COIL EXCESS CAMERA CABLE AND CIRCUITS JE,NE HERE FOR TRANSPORTATION PURPOSES.

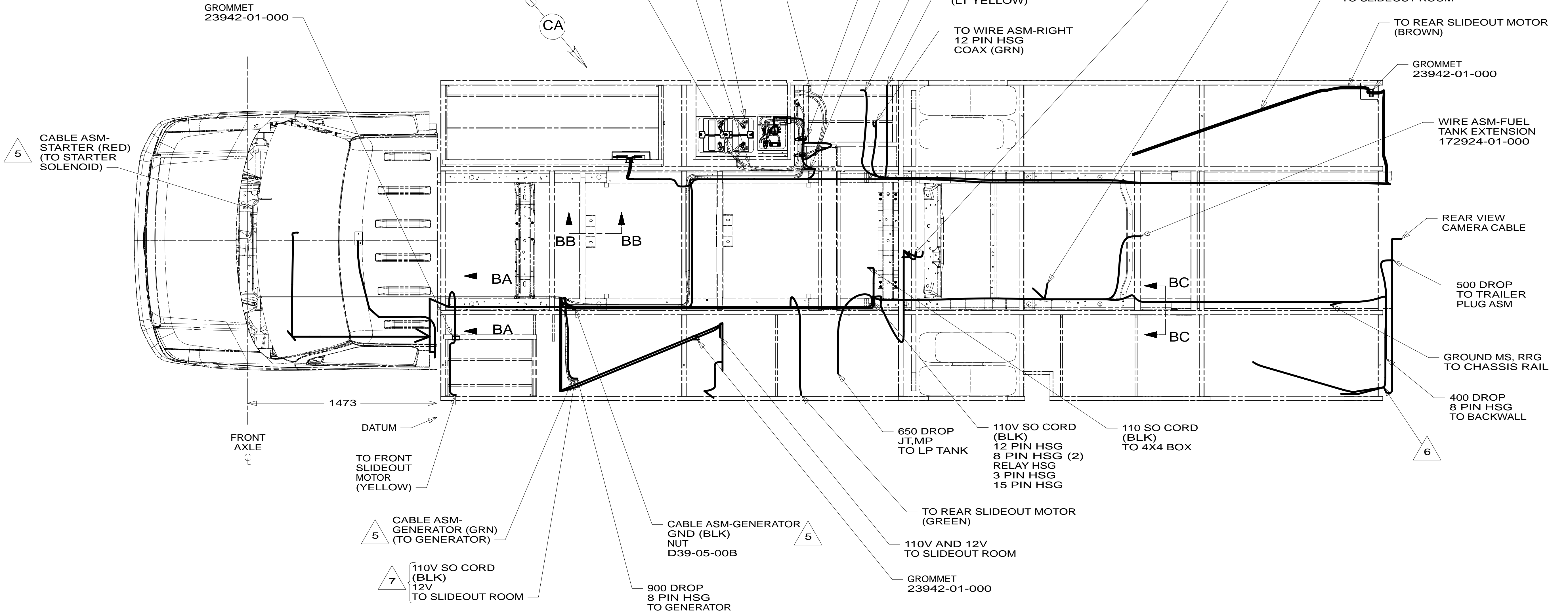
- 644 GREAT ALASKAN RENTAL PACKAGE
- 19R RADIO/REARVIEW MONITOR SYS
- 16Y FORD CHASSIS - 14,500#_GVWR
- 265 CODES/STANDARDS-CSA/CMVSS
- 1B1 CODES/STANDARDS USA

WINNEBAGO INDUSTRIES

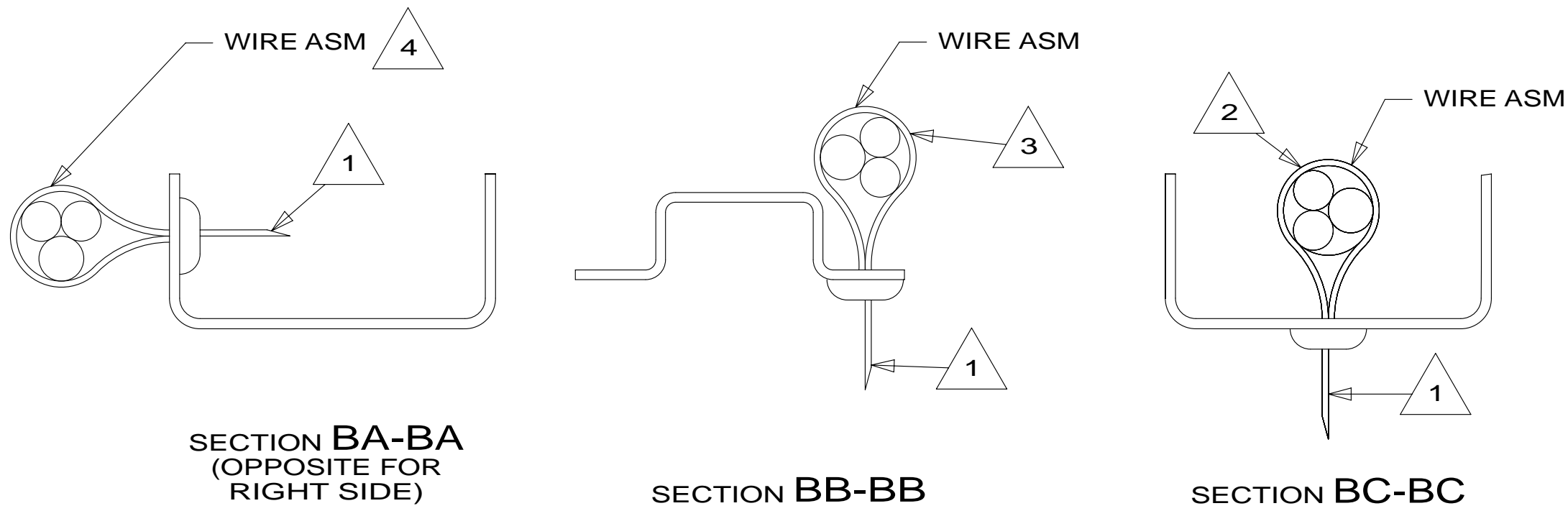
COPYRIGHT 2014 WINNEBAGO INDUSTRIES, INC.

DFT-ORIG	DATE
CHKR	
P.E.	
M.E.	
DSNR	
UNSPECIFIED TOLERANCES ARE:	MATERIAL:
WHOLE DIM (X) ± 3	
ONE-PLACE (X.X) ± 1.5	
TWO-PLACE (X.XX) ± 0.50	
ANGLE ± 1°	
THIRD ANGLE PROJECTION	
DO NOT SCALE DRAWING	REFER TO ES0018 FOR FASTENER TIGHTENING GUIDELINES
TITLE: WIRING INSTL-CHASSIS	
SHEET 1 OF 3	PART NO 189841
REF:	1
03-Sep-2014	

* 189841



- 7 WIRING PASSES THROUGH FLOOR IN THIS AREA.
- 6 REARVIEW MONITOR CABLE AND 12V (JE,NE) ROUTES THROUGH THE FLOOR IN THIS AREA.
- 5 SEE BATTERY INSTL FOR ADDITIONAL INFORMATION.
- 4 WIRES TO BE TIED TO CROSS MEMBER USING EXISTING HOLES.
- 3 WIRES TO BE TIED TO TOP OF RAIL USING EXISTING HOLES.
- 2 WIRES TO BE TIED TO INSIDE OF RAIL USING EXISTING HOLES.
- 1 CUT OFF EXCESS END OF WIRE TIE.

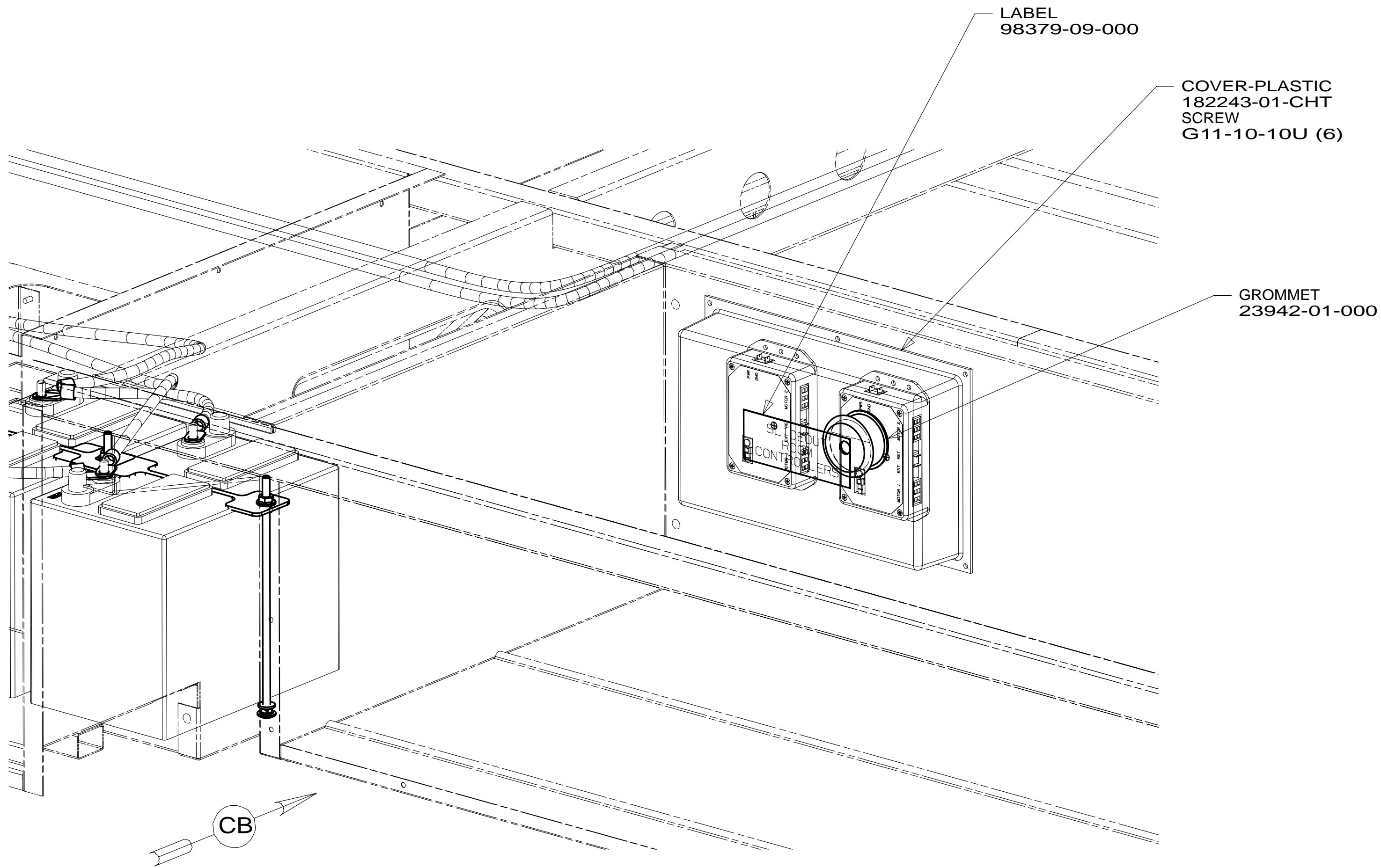


FOR ELECTRICAL TORQUE SPECIFICATIONS SEE DWG NO. 128783-01-000

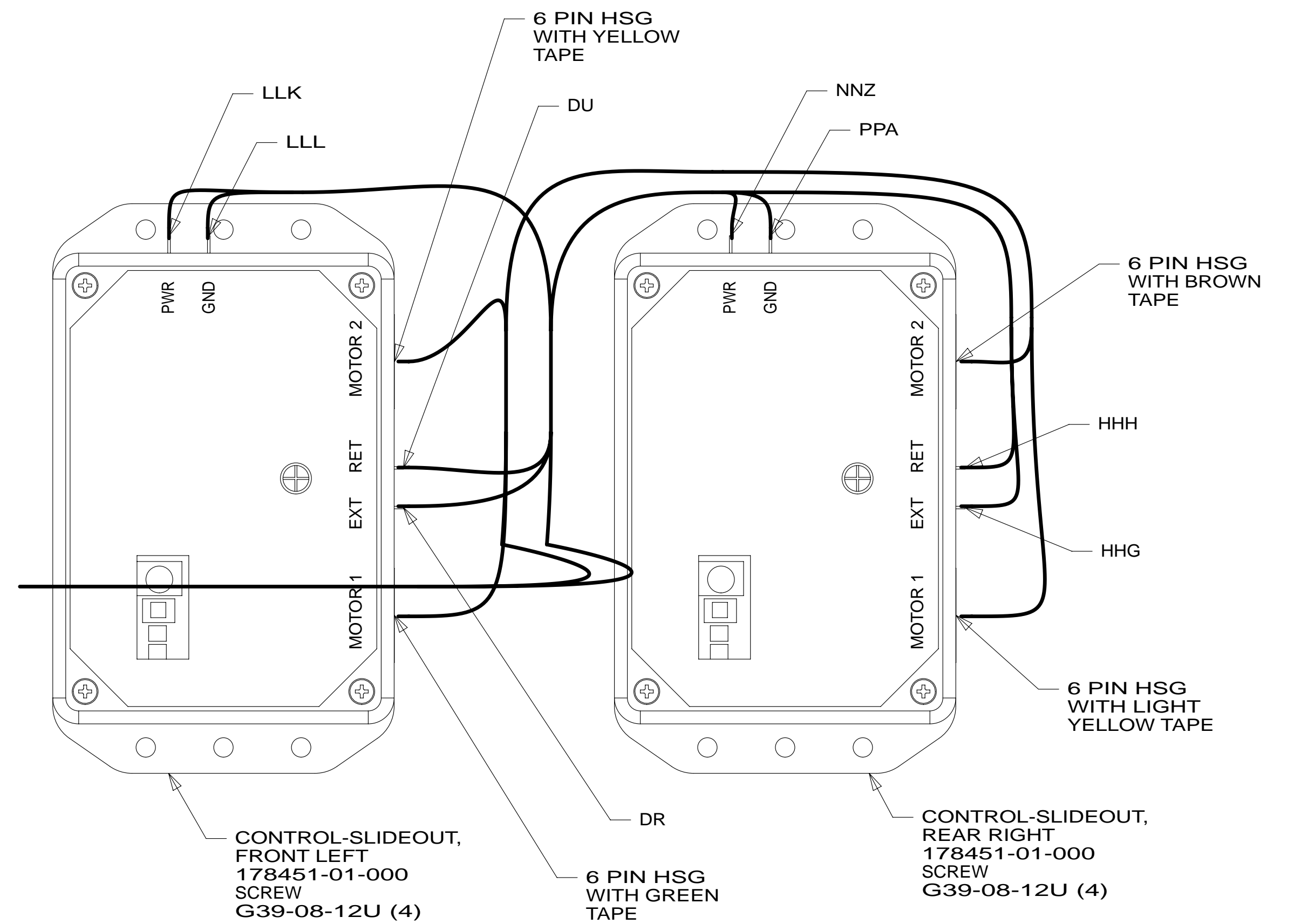
FOR ELECTRICAL CALLOUTS SEE DWG NO. 121339-01-000

- 16Y FORD CHASSIS - 14,500#_GVWR
- 265 CODES/STANDARDS-CSA/CMVSS
- 1B1 CODES/STANDARDS USA

FIRST USED		
15 331H		
DO NOT SCALE DRAWING		
TITLE: WIRING INSTL-CHASSIS		
SHEET 2	PART NO 189841	REV



VIEW CA



VIEW CB
(COVER REMOVED)

16Y FORD CHASSIS - 14,500#_GVWR
265 CODES/STANDARDS-CSA/CMVSS
1B1 CODES/STANDARDS USA

1B1 265 16Y

FIRST USED			15 331H
DO NOT SCALE DRAWING			
TITLE:			WIRING INSTL-CHASSIS
SHEET 3	PART NO	189841	REV

FOR ELECTRICAL
TORQUE
SPECIFICATIONS
SEE DWG NO.
128783-01-000

FOR
ELECTRICAL
CALLOUTS
SEE DWG NO.
121339-01-000