



DANGER

Danger of electrical shock, burns or death. Always remove all power sources before attempting any repair, service or diagnostic work. Power can be present from shore power, generator, inverter or battery. All power sources must be disabled and secured before performing any service.

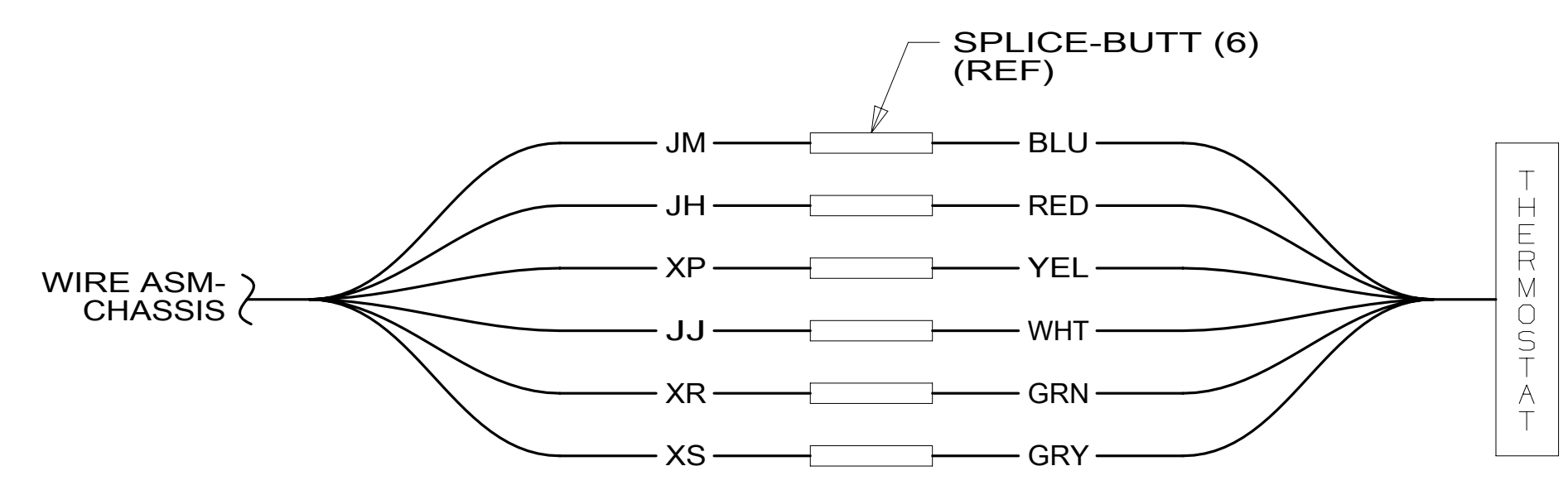


CAUTION

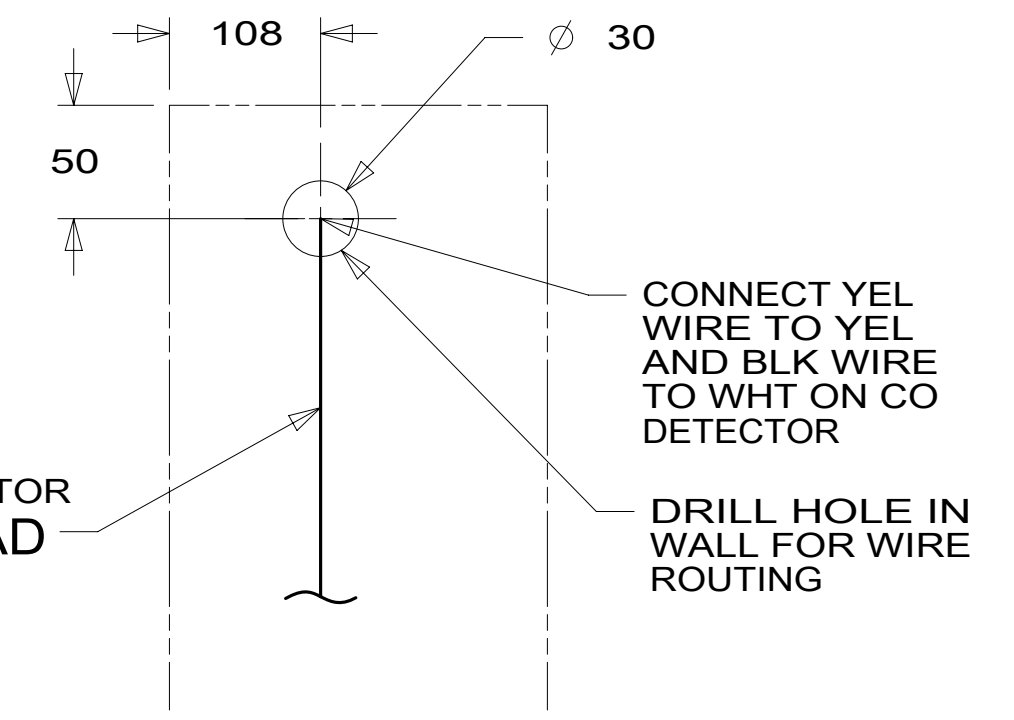
If you lack the skills, tools or equipment to perform diagnostic or repair work leave such work to an authorized Winnebago Industries dealer or other qualified shop.

DRAWING NO.	MODEL
189839-01	327Q
189839-02	327QP

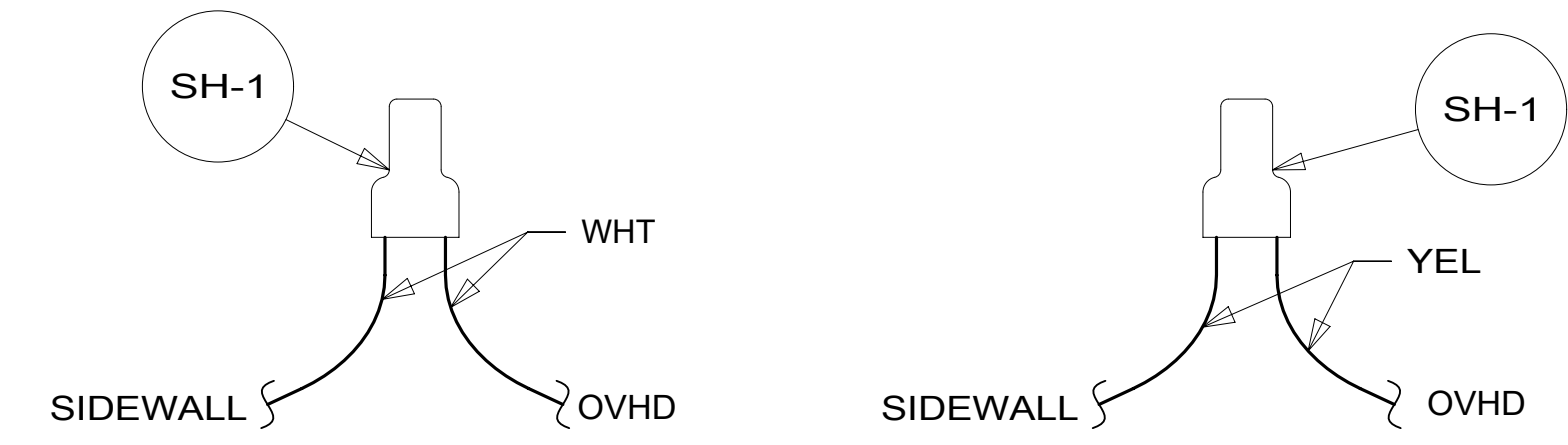
RELEASE	REV/DATE	DWG NO	189839
REV ZONE	REVISION RECORD	DATE	DTR-ORIG



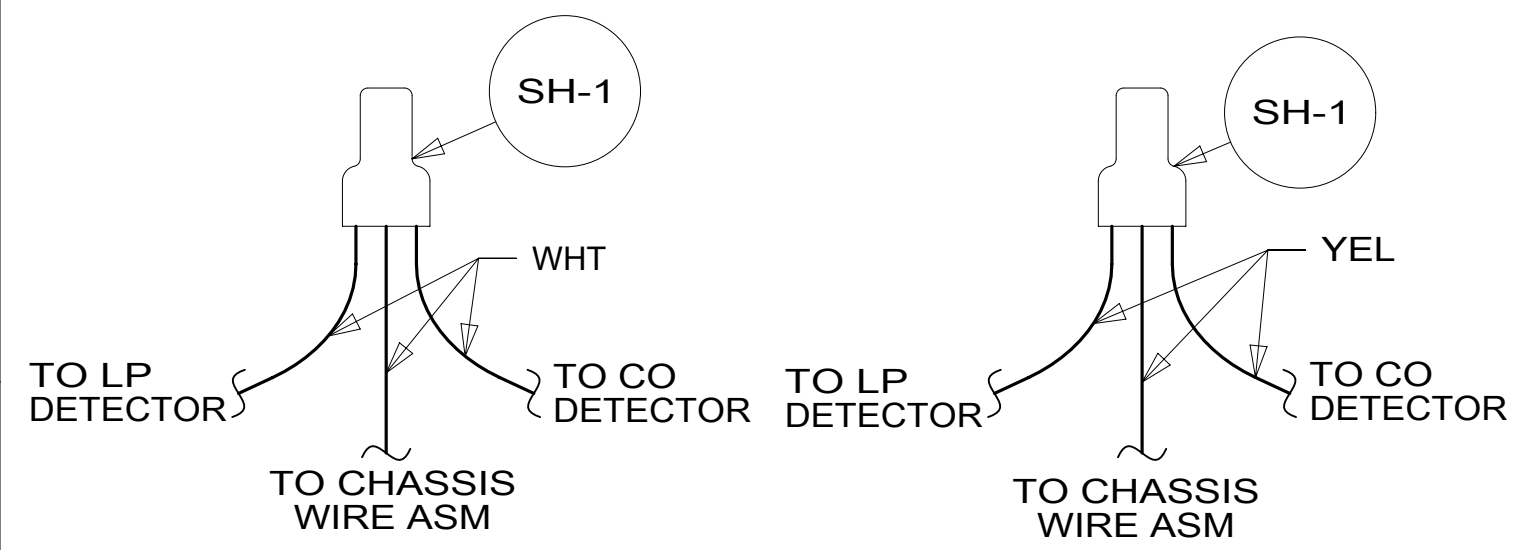
DETAIL AA



DETAIL AC 644



DETAIL AB



DETAIL AD 644

PLATE-WALL, COAX EXTERIOR
183638-01-CHT
(COAX-RED)
SCREW
G39-08-16U (3)

LAMP-DINETTE
93575-48-CHT
CONNECTOR
58028-01-000 (2)
SCREW
G11-08-16U (2)

DETECTOR-CO GAS
W/FUSE HSG
146126-04-CHT
SCREW
G12-08-16U (2)
CONNECTOR
58028-01-000 (2)
FUSE-1 AMP
062901-09-000
DETAIL AC

WIRE ASM-EXTENSION
183794-01-020

THERMOSTAT
135618-06-CHT
SCREW
G13-07-12B (2)
DETAIL AA

PART OF WIRE ASM-CHASSIS

DETECTOR-LP GAS
150138-02-CHT
SCREW
G68-06-10U (2)

WIRE ASM-TANK
MAIN HOLDING
183744-02-000
DETAIL EC
WIRE ASM-TANK
MAIN HOLDING
151317-03-000

WIRE ASM-HEATER, TANKS
183828-03-000

WIRE ASM-WATER TANK
183744-01-000
DETAIL EA
WIRE ASM-WATER TANK
151317-02-000

TO MACERATOR
(DRAIN PUMP)
CIRCUITS DA, JN
(PART OF WIRE
ASM-CHASSIS)

- 10 MARK WIRES WITH WRAP OF ORG TAPE.
- 9 MARK WIRES WITH WRAP OF RED TAPE.
- 8 MARK WIRES WITH WRAP OF BLU TAPE.
- 7 CUT 2-PIN HSG OFF ASSEMBLY, REPLACE WITH BUTT SPLICE 031876-01-000 (2). CONNECT BLK WIRE TO WHT AND BLK/WHT WIRE TO YEL
- 6 WIRE ROUTED ALONG WITH DRAINAGE PIPE AND ATTACHED TO PIPE WITH TIE-WIRE 8343-04-000.
- 5 COVER BUTT SPLICES FROM CHASSIS LOOM TO MACERATOR PUMP WITH HEAT SHRINK 007956-09-000 (2).
- 4 USED WITH 644
- 3 USED WITH 327QP.
- 2 USED WITH 327Q.

1. AT MINIMUM ALL WIRES TO BE SUPPORTED AND SECURED PER CODE REQUIREMENTS. USE CLAMP 10495 OR 10497 OR WIRE TIE 8343 OR 108046 AND SCREW G67-XX-XXX OR G56-XX-XXX AS APPROPRIATE FOR INSTALLATION.

NOTES:

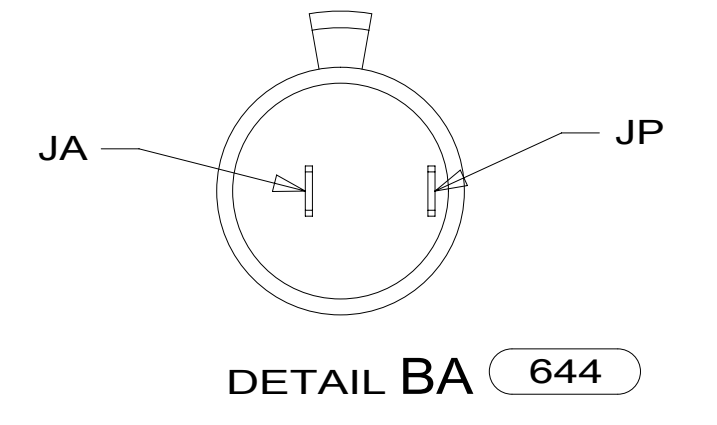
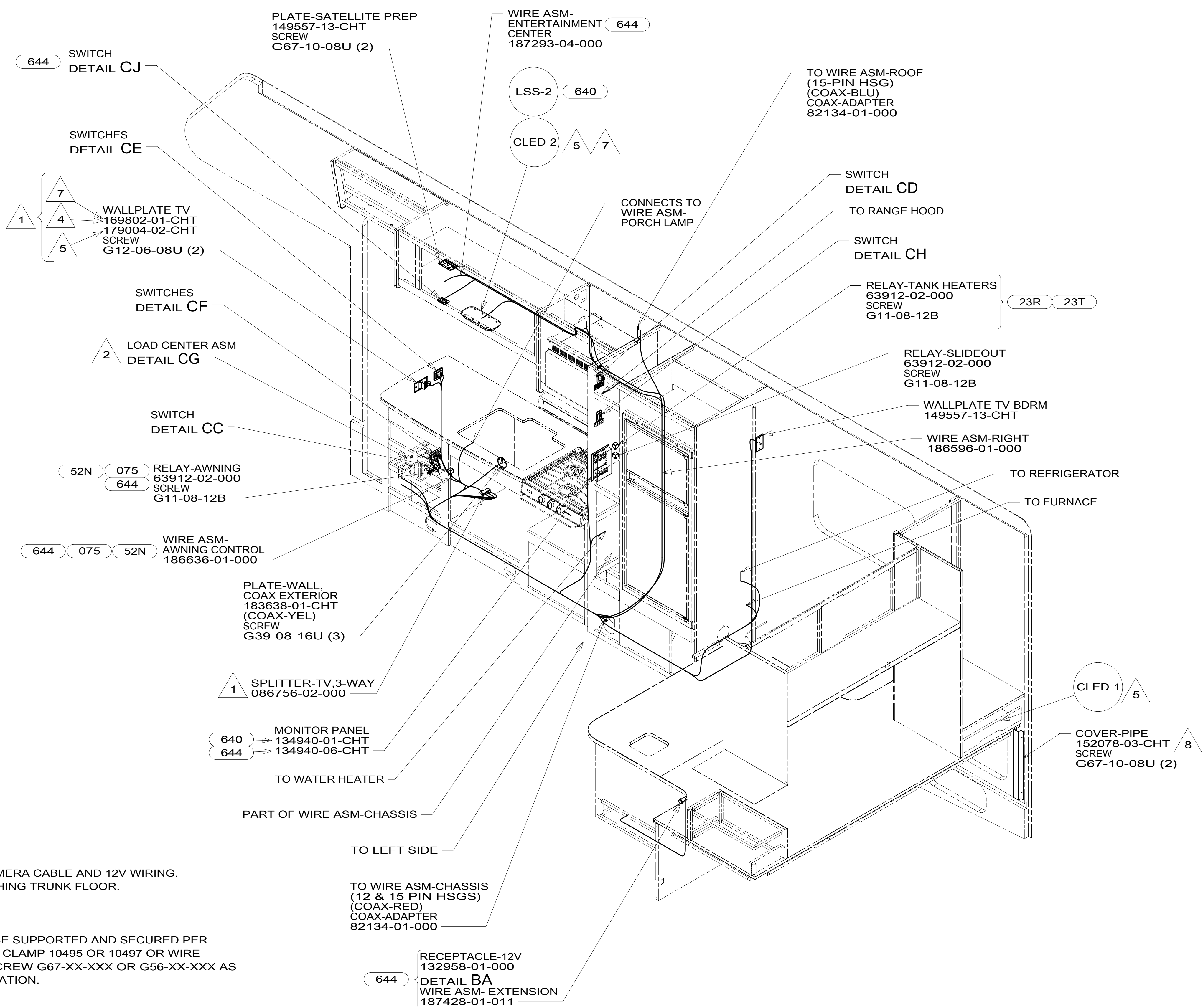
FOR ELECTRICAL TORQUE SPECIFICATIONS SEE DWG NO. 128783-01-000

FOR ELECTRICAL CALLOUTS SEE DWG NO. 121339-01-000

- 640 RENTAL - GAH WITHOUT
- 644 GREAT ALASKAN RENTAL PACKAGE
- 23R DRAINAGE SYSTEM/HEAT-PREWIRED
- 23T DRAINAGE SYSTEM-HEATED
- 265 CODES/STANDARDS-CSA/CMVSS
- 1B1 CODES/STANDARDS USA

UNSPECIFIED TOLERANCES ARE:		MATERIAL:
WHOLE DIM (X)	: 3	
ONE-PLACE (X.X)	: 1.5	
TWO-PLACE (X.XX)	: 0.50	
ANGLE	: 1'	
THIRD ANGLE PROJECTION		
DO NOT SCALE DRAWING		REFER TO ES0018 FOR FASTENER TIGHTENING GUIDELINES
TITLE: WIRING INSTL-BODY, 12V		
SHEET 1 OF 5	PART NO 189839	REV

189839



- NOTES:
- 8 COVER USED TO COVER CAMERA CABLE AND 12V WIRING. INSTALL WITH COVER TOUCHING TRUNK FLOOR.
 - 7 USED WITH 644
 - 6. AT MINIMUM ALL WIRES TO BE SUPPORTED AND SECURED PER CODE REQUIREMENTS. USE CLAMP 10495 OR 10497 OR WIRE TIE 8343 OR 108046 AND SCREW G67-XX-XXX OR G56-XX-XXX AS APPROPRIATE FOR INSTALLATION.
 - 5 USED WITH 327QP.
 - 4 USED WITH 327Q.
 - 3 SEE DRAINAGE SYSTEM INSTALLATION FOR ADDITIONAL INFORMATION.
 - 2 SEE LOAD CENTER/ATS ASM FOR ADDITIONAL INFORMATION.
 - 1 SEE WIRING INSTL-TV/DVD FOR ADDITIONAL INFORMATION.

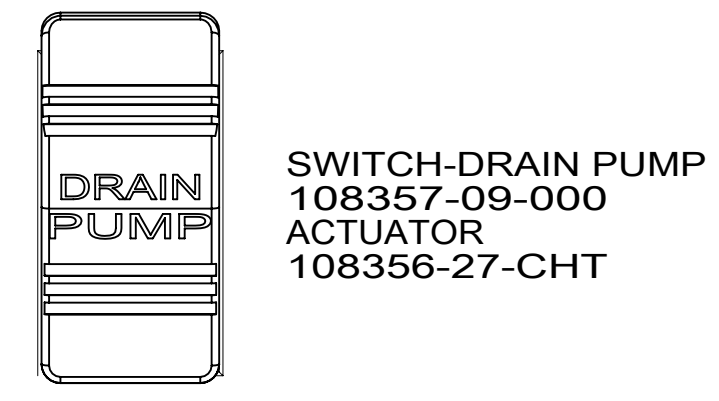
- 640 RENTAL - GAH WITHOUT
- 644 GREAT ALASKAN RENTAL PACKAGE
- 52N AWNING - PATIO,ELECTRIC
- 075 CONVENIENCE & APPEARANCE PKG
- 23T DRAINAGE SYSTEM - HEATED
- 23R DRAINAGE SYSTEM/HEAT - PREP
- 265 CODES/STANDARDS-CSA/CMVSS
- 1B1 CODES/STANDARDS USA

FOR ELECTRICAL TORQUE SPECIFICATIONS SEE DWG NO. 128783-01-000

FOR ELECTRICAL CALLOUTS SEE DWG NO. 121339-01-000

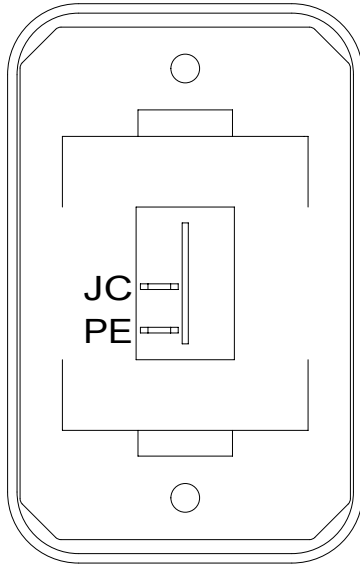
FIRST USED		15 327Q/P	
DO NOT SCALE DRAWING			
TITLE: WIRING INSTL-BODY, 12V			
SHEET 2	PART NO	189839	REV
		12-May-2015	

* 189839 A *



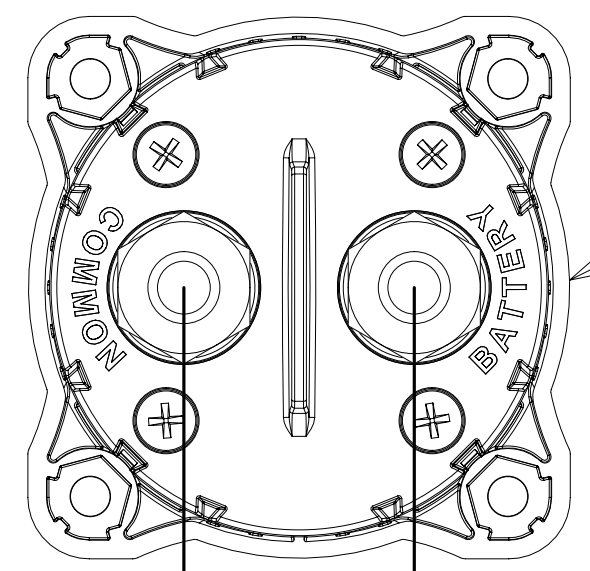
SWITCH-DRAIN PUMP
108357-09-000
ACTUATOR
108356-27-CHT

DETAIL CA



SWITCH-ROCKER
135740-01-CHT
SWITCH-BASE
135741-01-CHT
SWITCH-BEZEL
135742-01-CHT
SCREW
G11-08-08U (2)

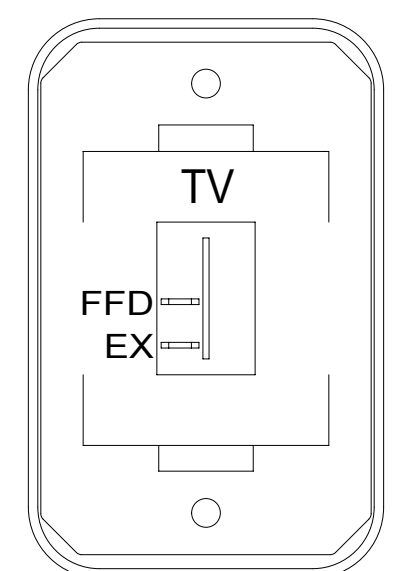
DETAIL CB



SWITCH-BATT DISC
183904-01-000
SCREW
G67-10-12U (4)

CABLE ASM-BLUE
CABLE ASM-PURPLE

DETAIL CC



SWITCH-ROCKER
135740-01-CHT
SWITCH-BASE
135741-01-CHT
SWITCH-BEZEL
135742-45-CHT
SCREW
G11-08-08U (2)

DETAIL CJ 644

DRIVER'S SIDE FRONT

LABEL-SLIDEOUT, DRIVER, FRONT
163992-01-CHT

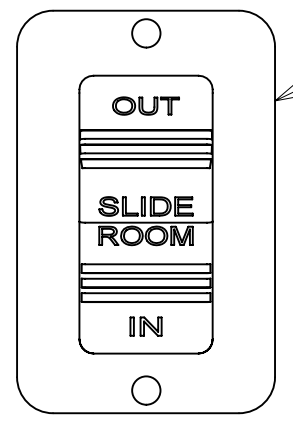
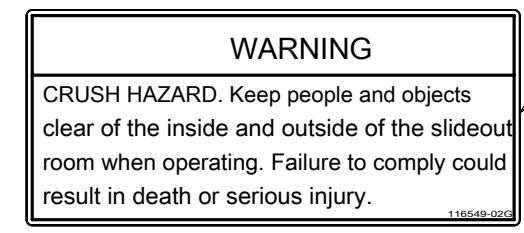
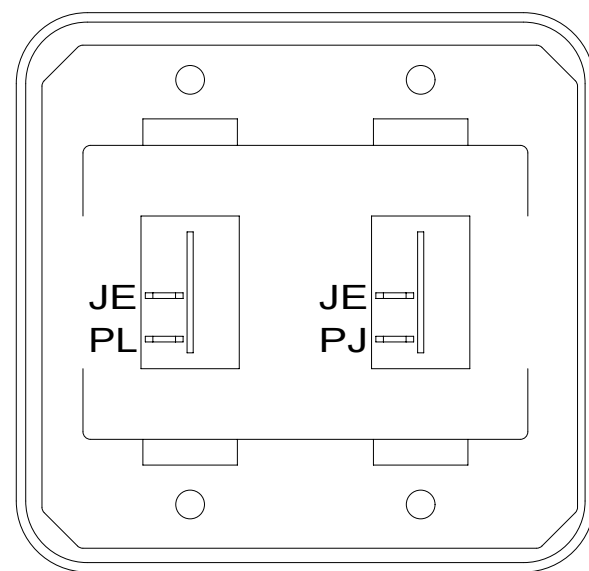


PLATE-SWITCH
144363-02-CHT
SWITCH
108357-06-000
ACTUATOR
108356-24-CHT
SCREW
G11-08-08U (2)



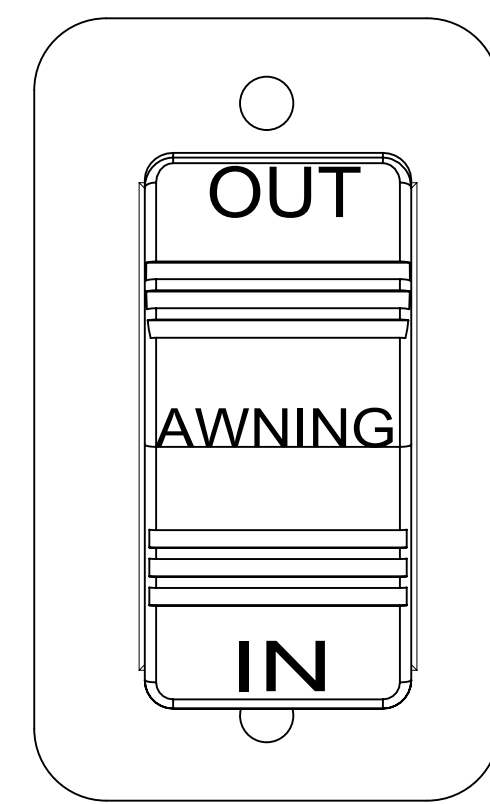
LABEL-WARNING, SLIDEOUT
116549-02-000

DETAIL CD



SWITCH-ROCKER
135740-01-CHT (2)
SWITCH-BASE
135741-02-CHT
SWITCH-BEZEL
135742-02-CHT
SCREW
G11-08-08U (4)

DETAIL CE



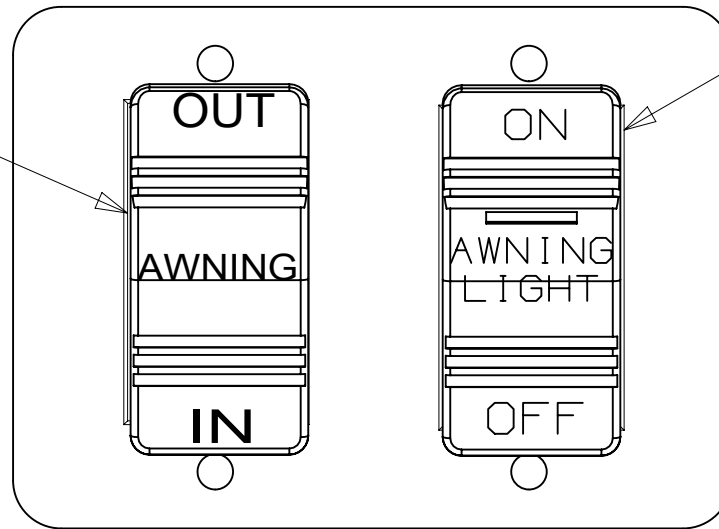
SWITCH-ROCKER
108357-06-000
ACTUATOR
108356-12-CHT
SWITCH-BLANK
096241-03-000
PLATE-SWITCH
098351-07-CHT
SCREW
G11-06-10U (2)

DETAIL CF 2

SWITCH-AWNING
108357-06-000
ACTUATOR
108356-12-CHT

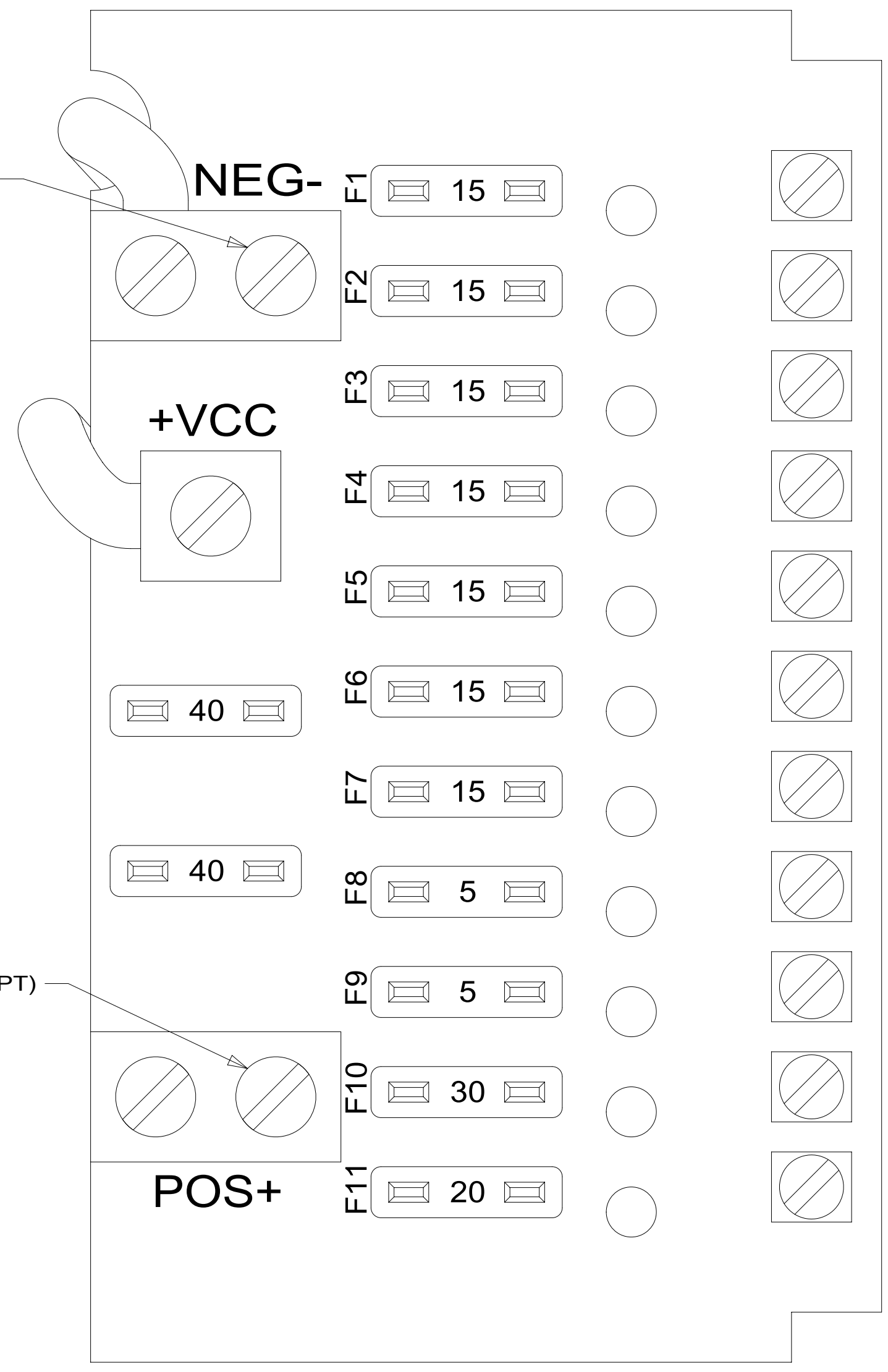
SWITCH-AWNING LIGHT
108357-14-000
ACTUATOR
108356-28-CHT

PLATE
98351-22-CHT
SCREW
G11-06-10U (4)



DETAIL CF 3 52N

8 GRN (GROUND)



DETAIL CG 1

- JC 14 YEL (LAMPS)
- JD 14 YEL (LAMPS)
- JE 14 YEL (LAMPS)
- NM 14 YEL (HEATED TANKS) 23R OR 23T
- JA 12 YEL (MONITOR PANEL & PUMP) (ISOLATED CIRCUIT)
- JB 14 YEL (FURNACE)
- FFD 12 YEL (AWNING) (TV/RADIO)
- WB 16 YEL (CO/LP GAS DETECTOR)
- ET 16 YEL (REFRIG)
- LLK 10 YEL (FRONT SLIDEOUT)
- JG 10 YEL (MACERATOR PUMP)

HOLDING TANK HEATER
TURN OFF When Not In Use
SEE OPERATORS MANUAL

DETAIL CH 23T 23R

SWITCH-ROCKER
135740-06-CHT
SWITCH-BASE
135741-01-CHT
SWITCH-BEZEL
135742-01-CHT
SCREW
G11-08-08U (2)
LABEL-SWITCH
134563-01-CHT

- 644 GREAT ALASKAN RENTAL PACKAGE
- 075 CONVENIENCE & APPEARANCE PKG
- 52F AWNING - PATIO
- 52N AWNING - PATIO, ELECTRIC
- 23R DRAINAGE SYSTEM/HEAT-PREWIRE
- 23T DRAINAGE SYSTEM-HEATED
- 265 CODES/STANDARDS-CSA/CMVSS
- 1B1 CODES/STANDARDS USA

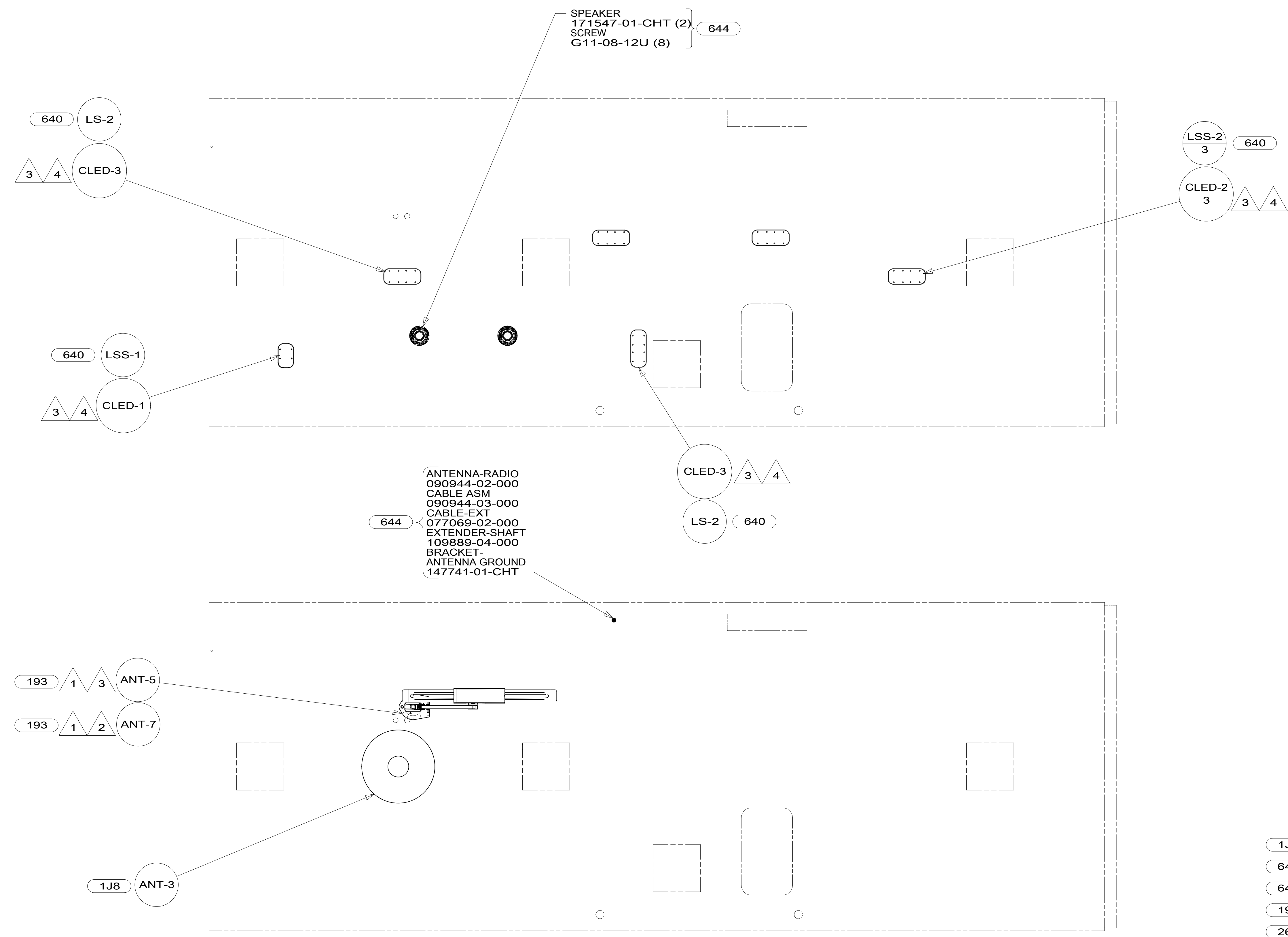
1B1	265
FIRST USED	
15 327Q/P	
DO NOT SCALE DRAWING	
TITLE: WIRING INSTL-BODY, 12V	
SHEET 3	PART NO 189839 REV

FOR ELECTRICAL TORQUE SPECIFICATIONS SEE DWG NO. 128783-01-000

FOR ELECTRICAL CALLOUTS SEE DWG NO. 121339-01-000

- NOTES:
- 3 USED WITH 327QP.
 - 2 USED WITH 327Q.
 - 1 SEE LOAD CENTER/ATS ASM FOR ADDITIONAL INFORMATION.

* 189839 A *



644

ANTENNA-RADIO
090944-02-000
CABLE ASM
090944-03-000
CABLE-EXT
077069-02-000
EXTENDER-SHAFT
109889-04-000
BRACKET-
ANTENNA GROUND
147741-01-CHT

- 1J8 TV ANTENNA-OMNI DIRECTIONAL
- 640 RENTAL - GAH WITHOUT
- 644 GREAT ALASKAN RENTAL PACKAGE
- 193 TV ANTENNA-AMPLIFIED SYSTEM
- 265 CODES/STANDARDS-CSA/CMVSS
- 1B1 CODES/STANDARDS USA

NOTES:

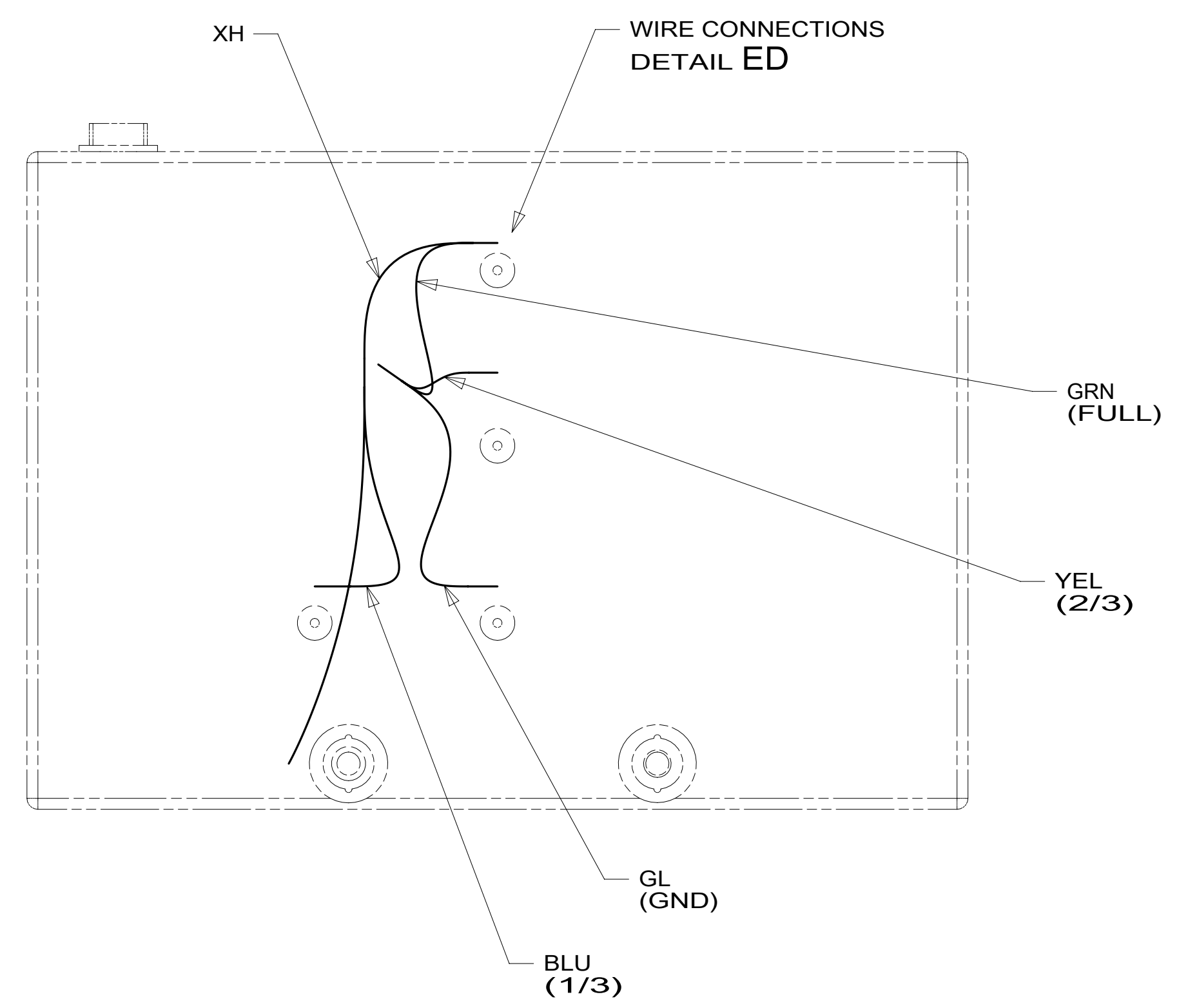
- 4 USED WITH 644
- 3 USED WITH 327QP.
- 2 USED WITH 327Q.
- 1 SEE ANTENNA INSTALLATION MANUAL FOR CORRECT INSTALLATION PROCEDURE.

FOR ELECTRICAL TORQUE SPECIFICATIONS SEE DWG NO. 128783-01-000

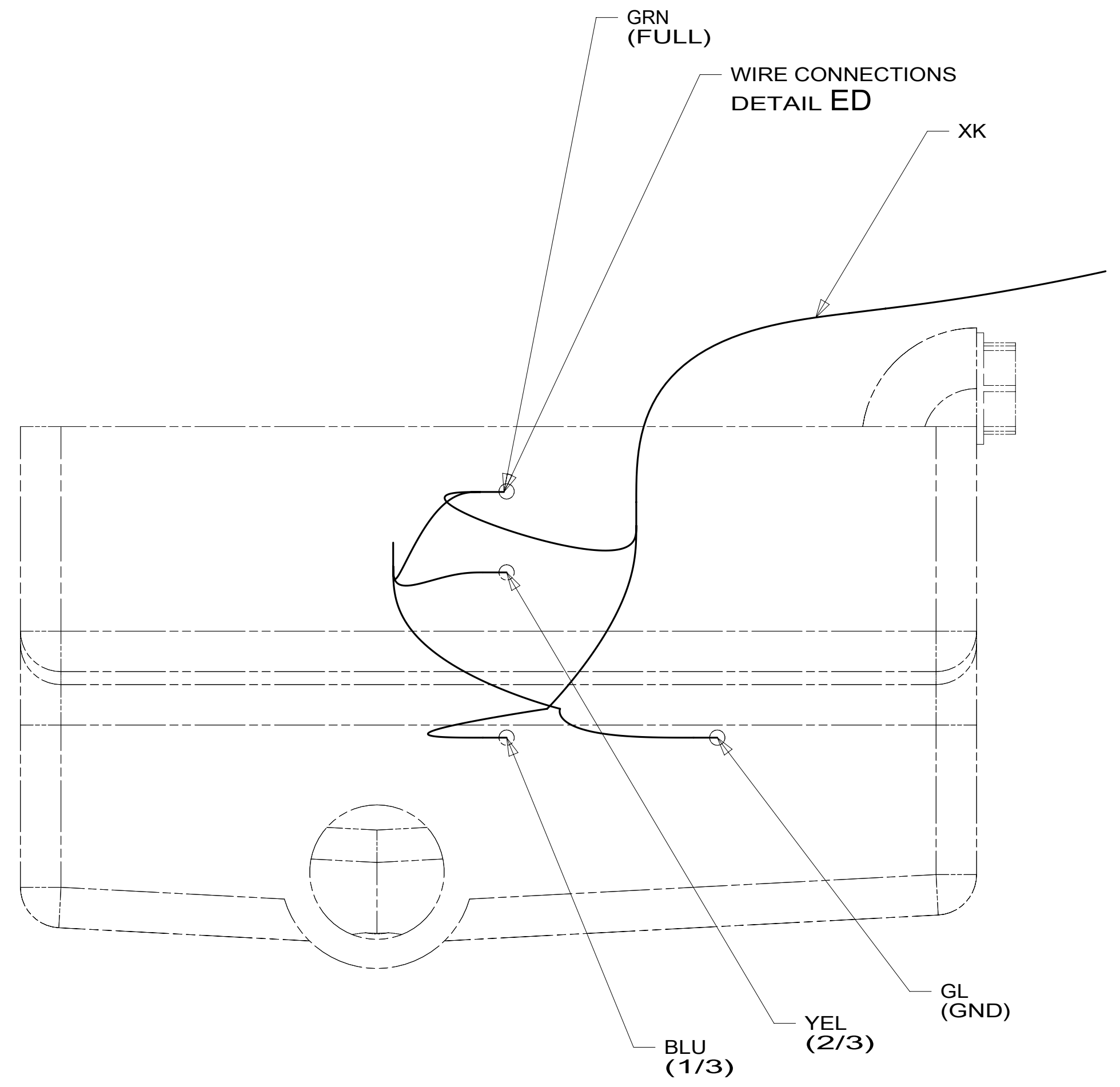
X-X FOR ELECTRICAL CALLOUTS SEE DWG NO. 121339-01-000

FIRST USED	15 327Q/P	
DO NOT SCALE DRAWING		
TITLE: WIRING INSTL-BODY, 12V		
SHEET 4	PART NO 189839	REV
1 12-May-2015		

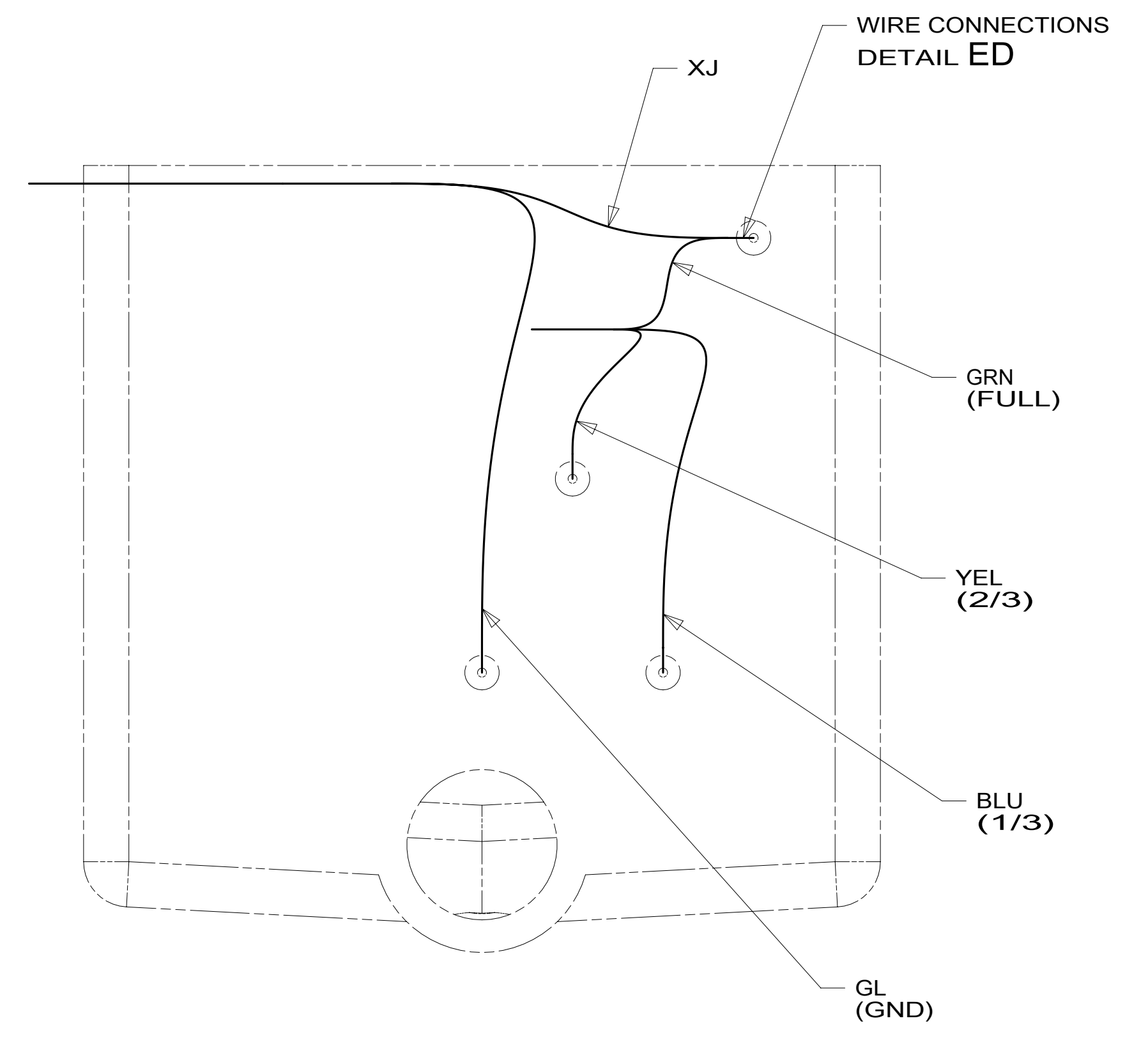
* 189839 *



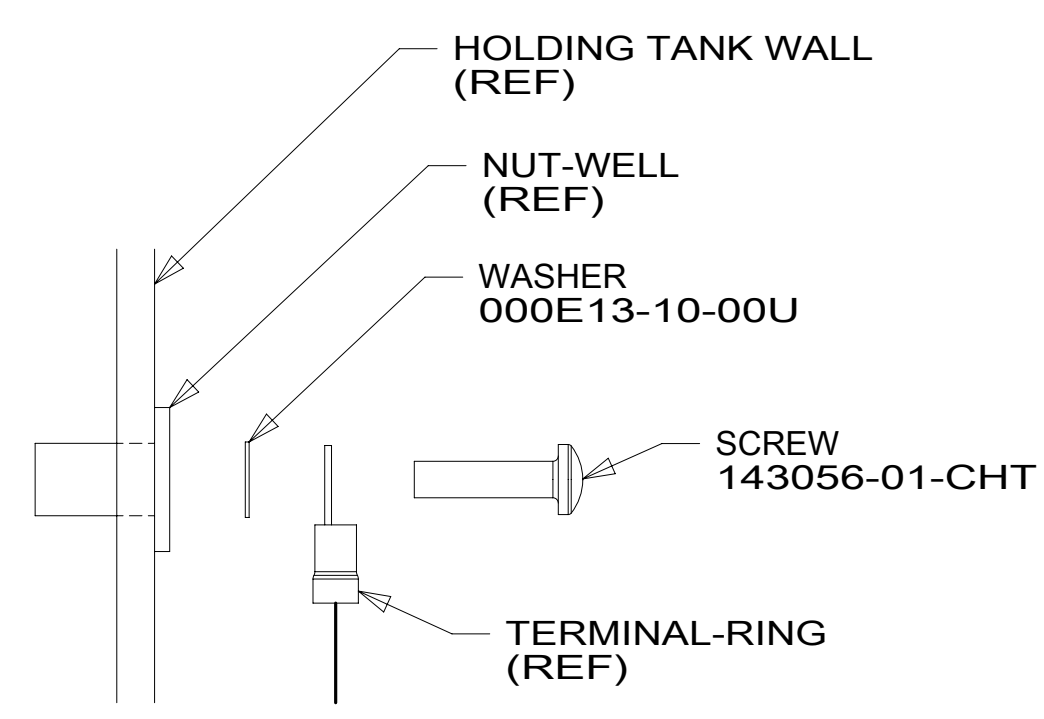
VIEW EA



VIEW EB



VIEW EC



DETAIL ED 1

1 TYPICAL WIRE ATTACHMENT AT ALL LEVEL PROBES (4 EACH) FOR WATER, MAIN, AND AUX HOLDING TANKS.

NOTES:

FOR ELECTRICAL TORQUE SPECIFICATIONS SEE DWG NO. 128783-01-000

X-X FOR ELECTRICAL CALLOUTS SEE DWG NO. 121339-01-000

265 CODES/STANDARDS-CSA/CMVSS

1B1 CODES/STANDARDS USA

1B1 265

FIRST USED	15 327Q/P	
DO NOT SCALE DRAWING		
TITLE: WIRING INSTL-BODY, 12V		
SHEET 5	PART NO. 189839	REV