



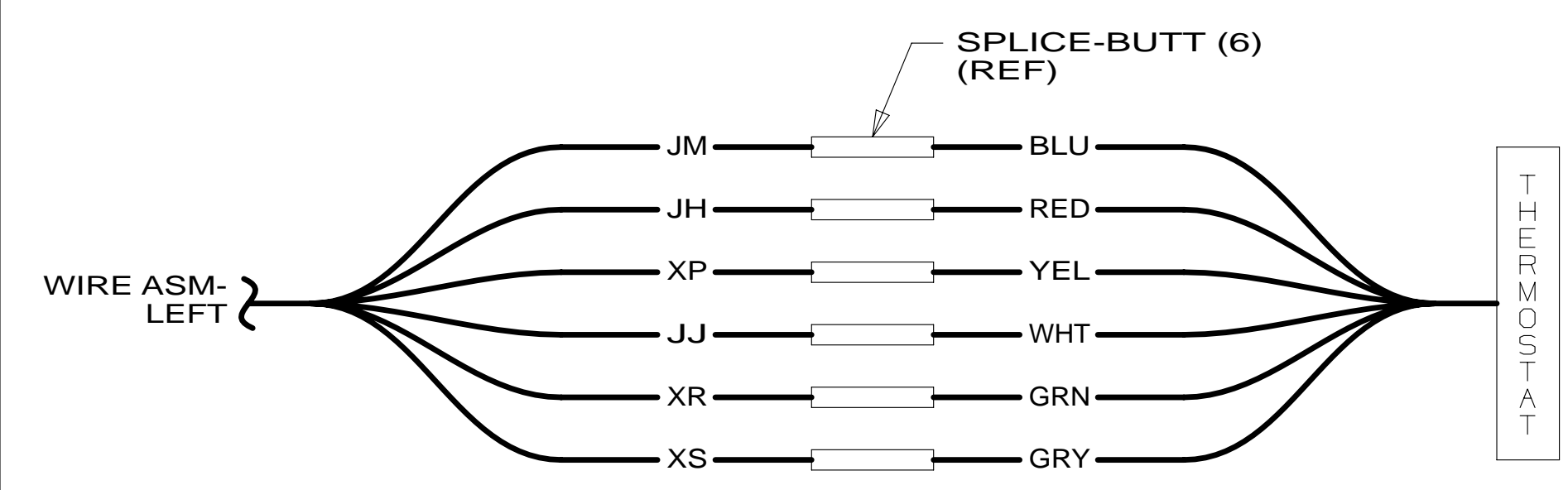
DANGER

Danger of electrical shock, burns or death. Always remove all power sources before attempting any repair, service or diagnostic work. Power can be present from shore power, generator, inverter or battery. All power sources must be disabled and secured before performing any service.

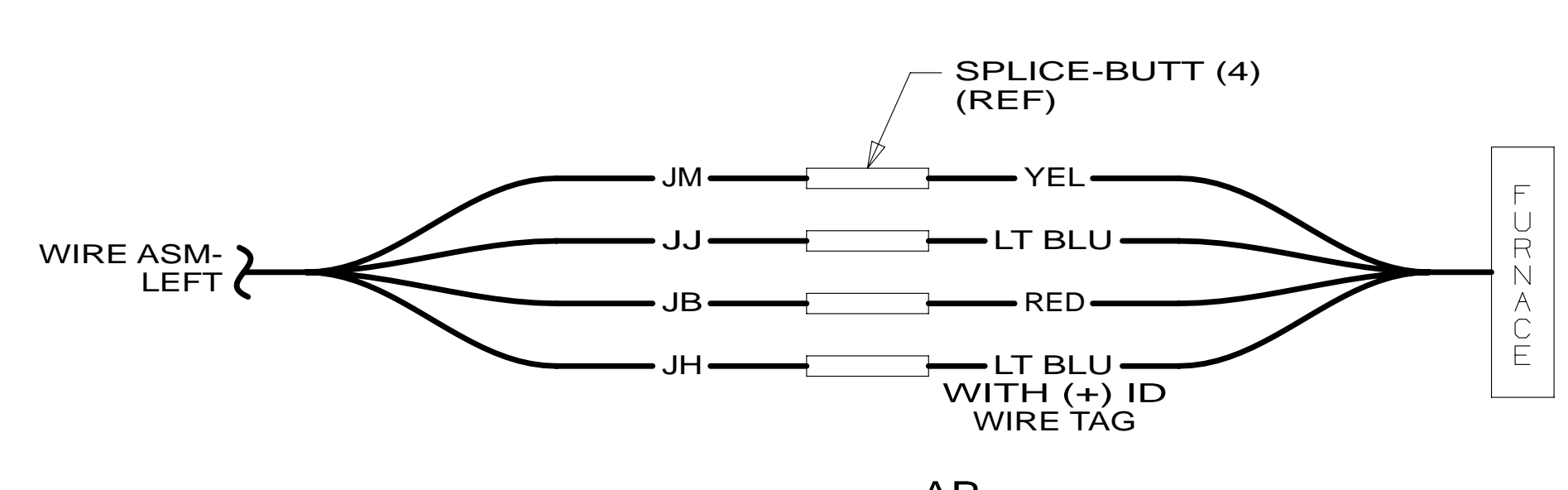


CAUTION

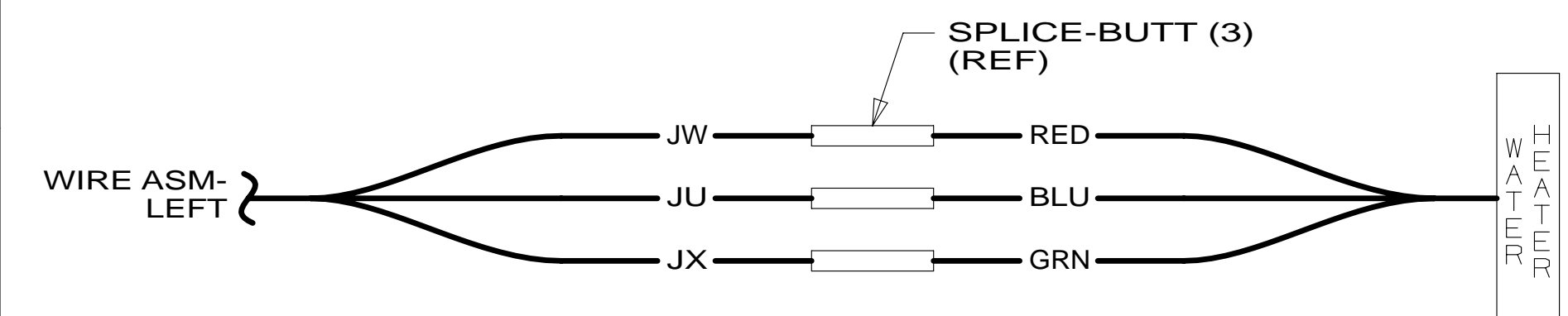
If you lack the skills, tools or equipment to perform diagnostic or repair work leave such work to an authorized Winnebago Industries dealer or other qualified shop.



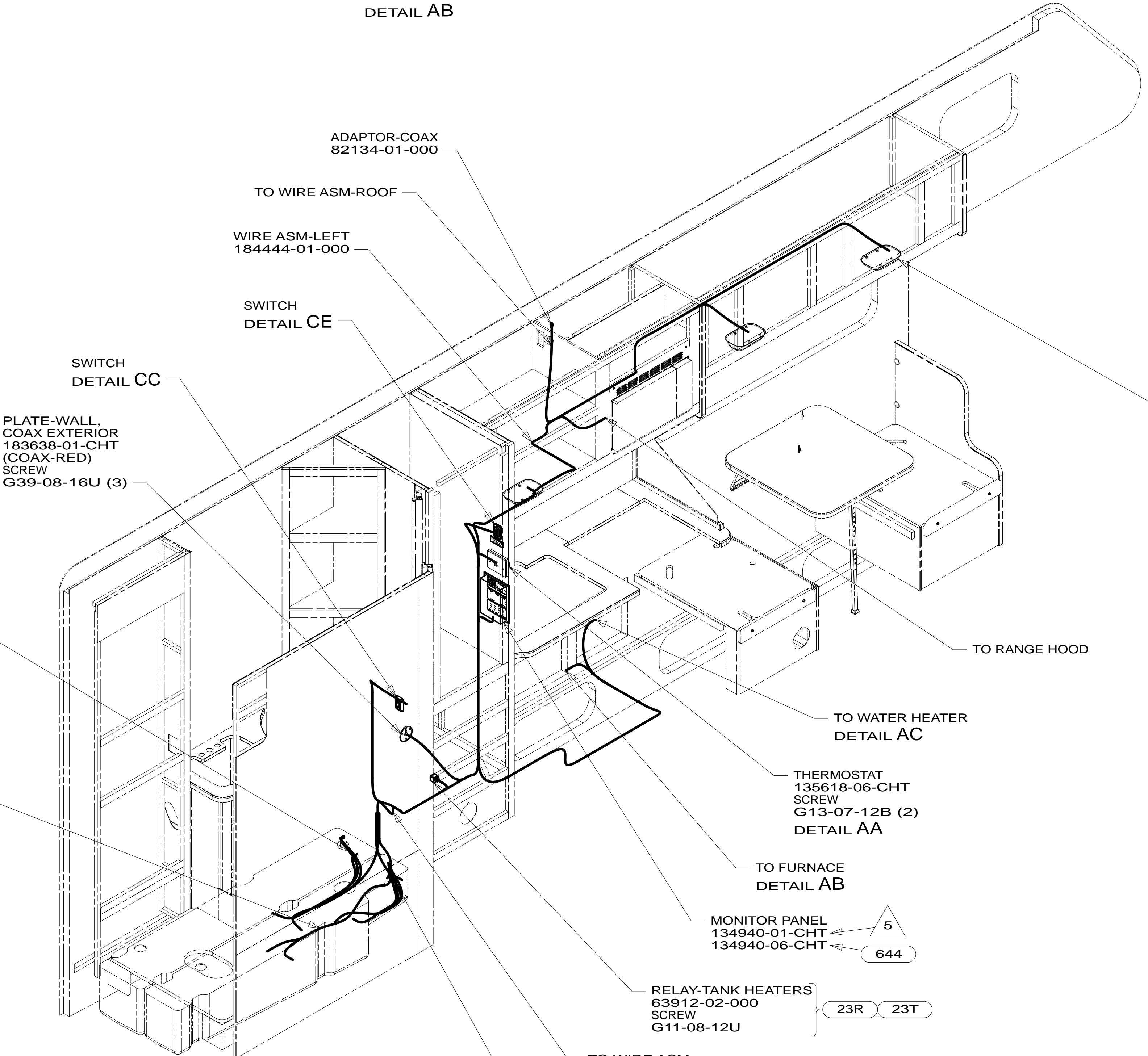
DETAIL AA



DETAIL AB



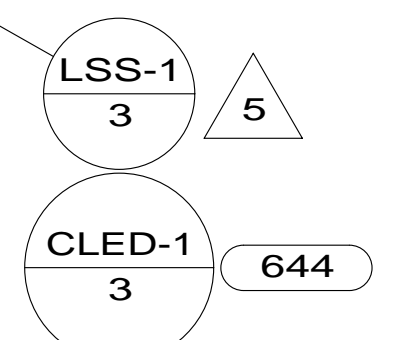
DETAIL AC



- 8 MARK WIRES WITH WRAP OF BLU TAPE.
- 7 MARK WIRES WITH WRAP OF ORG TAPE.
- 6 CUT 2 PIN HSG OFF ASM, REPLACE WITH SPLICE-BUTT 031876-01-000 (2). CONNECT BLK WIRE TO WHT AND BLK/WHT WIRE TO YEL.
- 5 NOT USED WITH 644
- 4 SEE DETAIL EA FOR WIRING AND CONNECTION TO SENSOR PROBES.
- 3 SEE DRAINAGE SYSTEM INSTALLATION FOR ADDITIONAL INFORMATION.
- 2 WIRE ROUTED ALONG DRAINAGE PIPE AND CONNECTED TO PIPE WITH TIE-WIRE 8343-04-000.

1. AT MINIMUM ALL WIRES TO BE SUPPORTED AND SECURED PER CODE REQUIREMENTS. USE CLAMP 10495 OR 10497 OR WIRE TIE 8343 OR 108046 AND SCREW G67-XX-XXX OR G56-XX-XXX AS APPROPRIATE FOR INSTALLATION.

NOTES:



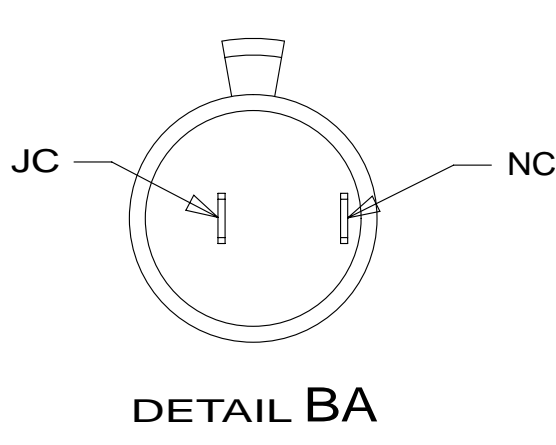
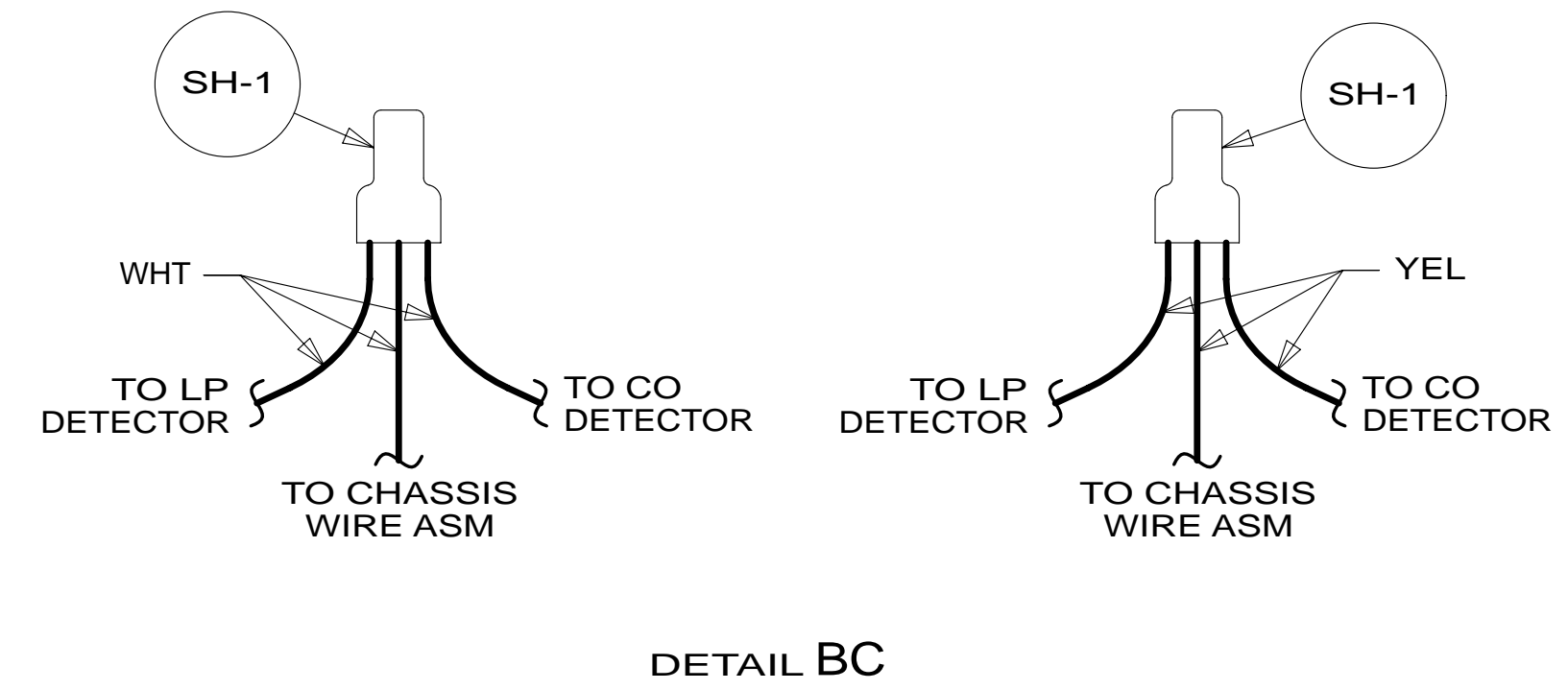
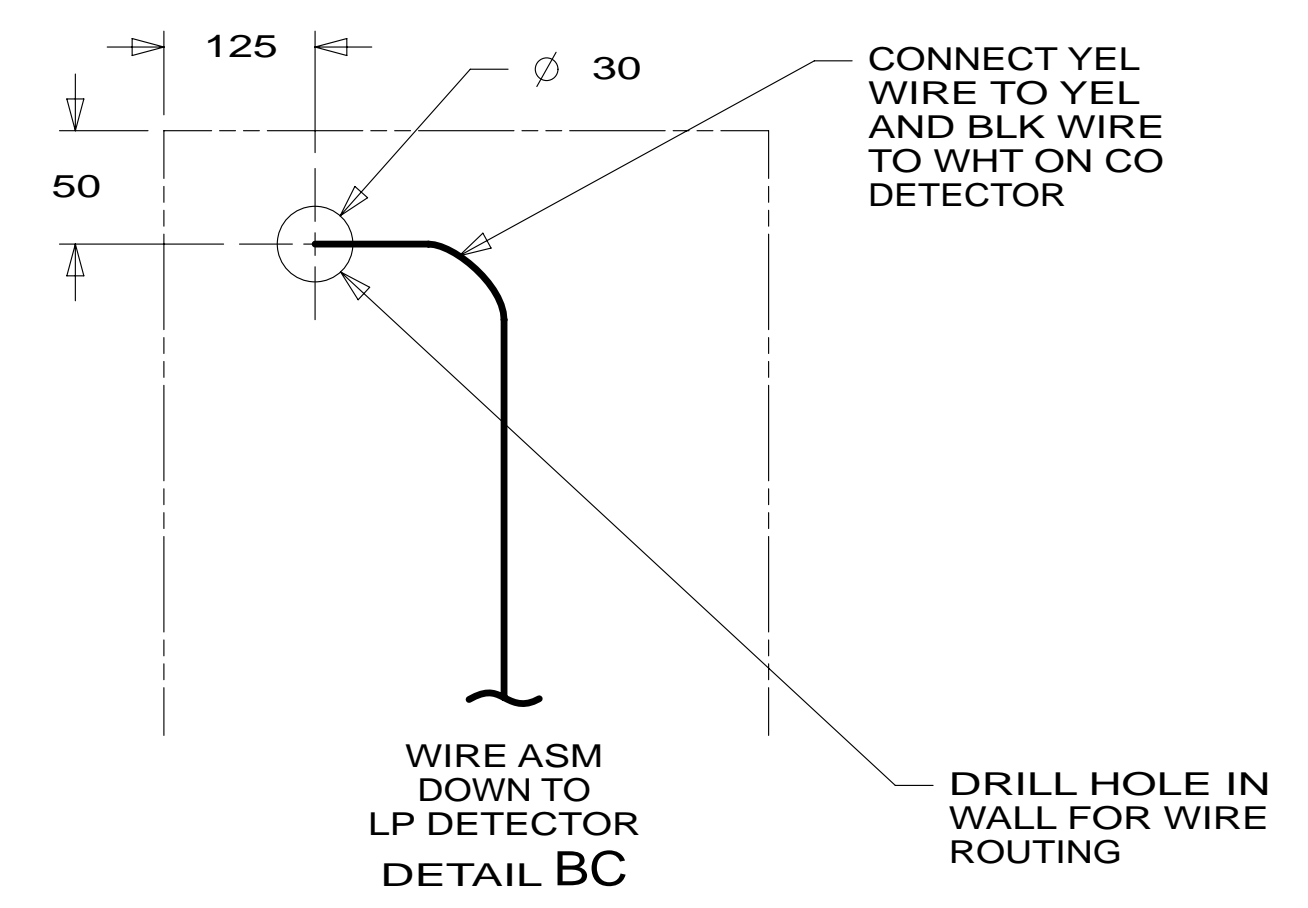
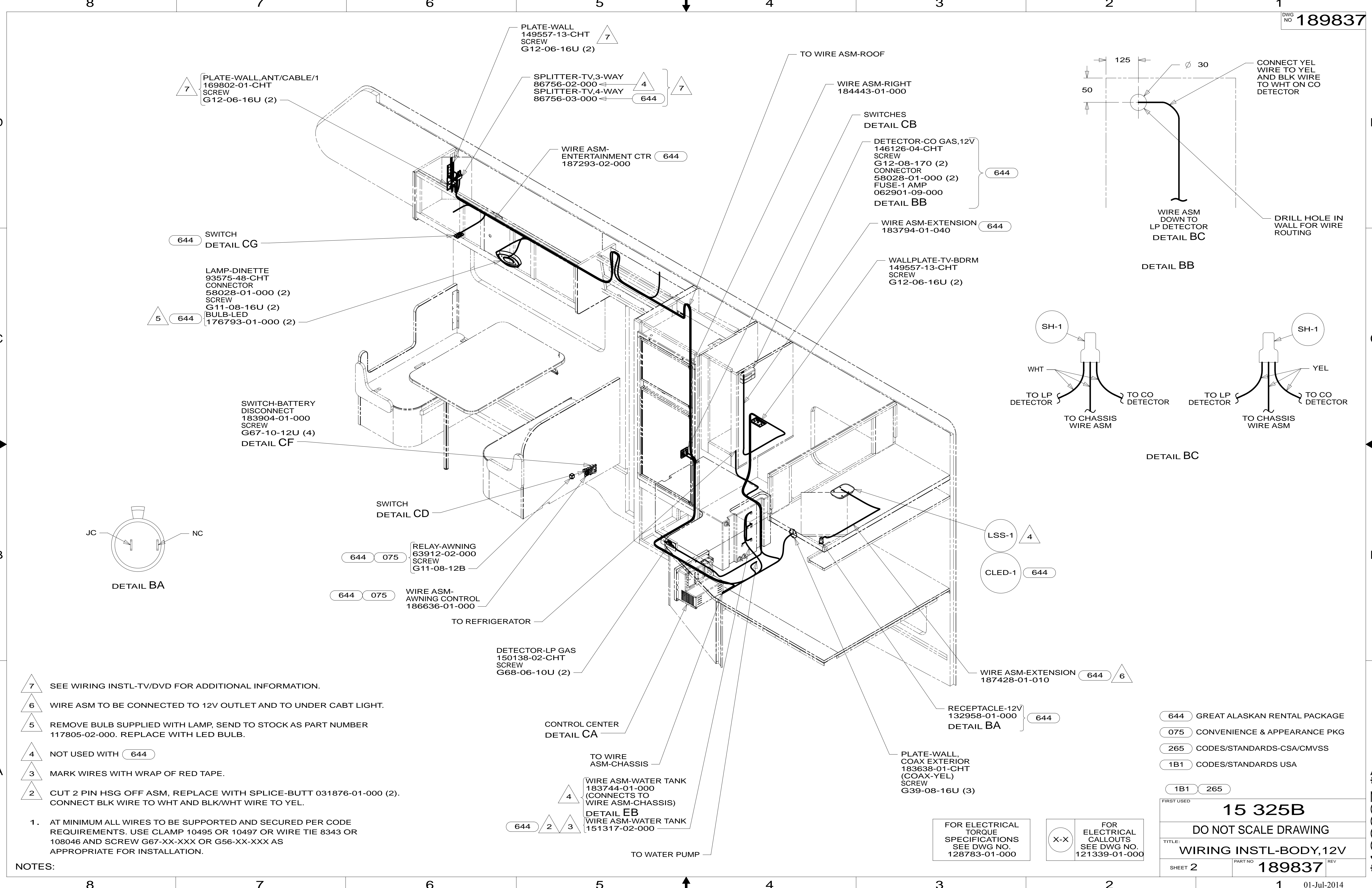
- 644 GREAT ALASKAN RENTAL PACKAGE
- 23R DRAINAGE SYSTEM/HEAT-PREWIRE
- 23T DRAINAGE SYSTEM-HEATED
- 265 CODES/STANDARDS-CSA/CMVSS
- 1B1 CODES/STANDARDS USA

UNSPECIFIED TOLERANCES ARE:		MATERIAL:
WHOLE DIM (X)	: 3	
ONE-PLACE (X.X)	: 1.5	
TWO-PLACE (X.XX)	: 0.50	
ANGLE	: 1°	
THIRD ANGLE PROJECTION		
DO NOT SCALE DRAWING		REFER TO ES0018 FOR FASTENER TIGHTENING GUIDELINES
TITLE: WIRING INSTL-BODY, 12V		
SHEET 1 OF 5	PART NO 189837	REV

FOR ELECTRICAL TORQUE SPECIFICATIONS SEE DWG NO. 128783-01-000

FOR ELECTRICAL CALLOUTS SEE DWG NO. 121339-01-000

* 189837 *



- NOTES:
- 7 SEE WIRING INSTL-TV/DVD FOR ADDITIONAL INFORMATION.
 - 6 WIRE ASM TO BE CONNECTED TO 12V OUTLET AND TO UNDER CABT LIGHT.
 - 5 REMOVE BULB SUPPLIED WITH LAMP, SEND TO STOCK AS PART NUMBER 117805-02-000. REPLACE WITH LED BULB.
 - 4 NOT USED WITH 644
 - 3 MARK WIRES WITH WRAP OF RED TAPE.
 - 2 CUT 2 PIN HSG OFF ASM, REPLACE WITH SPLICE-BUTT 031876-01-000 (2). CONNECT BLK WIRE TO WHT AND BLK/WHT WIRE TO YEL.
 - 1. AT MINIMUM ALL WIRES TO BE SUPPORTED AND SECURED PER CODE REQUIREMENTS. USE CLAMP 10495 OR 10497 OR WIRE TIE 8343 OR 108046 AND SCREW G67-XX-XXX OR G56-XX-XXX AS APPROPRIATE FOR INSTALLATION.

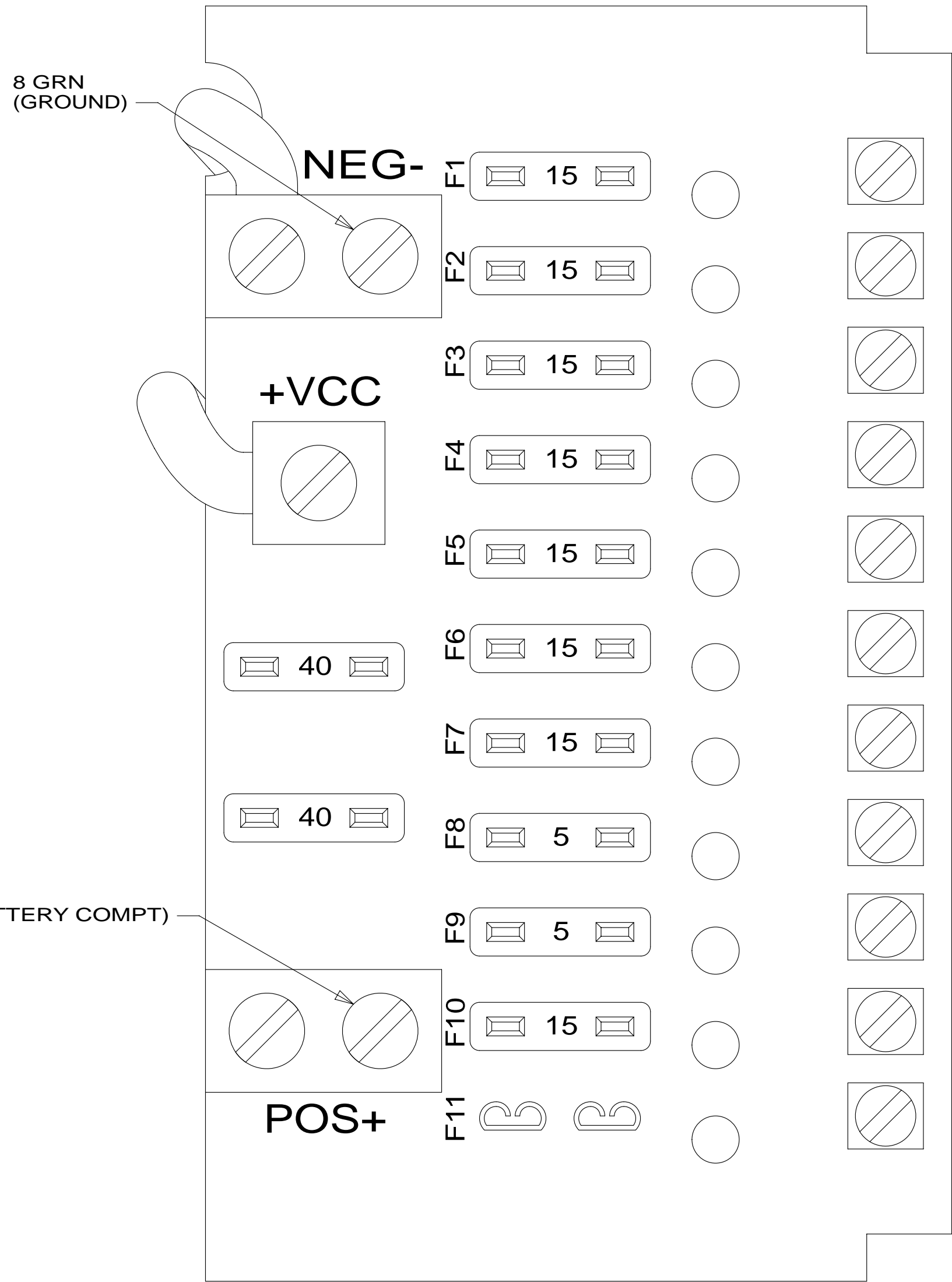
- 644 GREAT ALASKAN RENTAL PACKAGE
- 075 CONVENIENCE & APPEARANCE PKG
- 265 CODES/STANDARDS-CSA/CMVSS
- 1B1 CODES/STANDARDS USA

FIRST USED	
15 325B	
DO NOT SCALE DRAWING	
WIRING INSTL-BODY, 12V	
SHEET 2	PART NO 189837 REV
01-Jul-2014	

FOR ELECTRICAL TORQUE SPECIFICATIONS SEE DWG NO. 128783-01-000

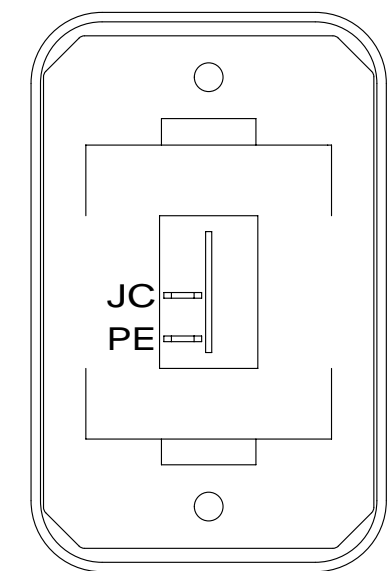
FOR ELECTRICAL CALLOUTS SEE DWG NO. 121339-01-000

* 189837 *



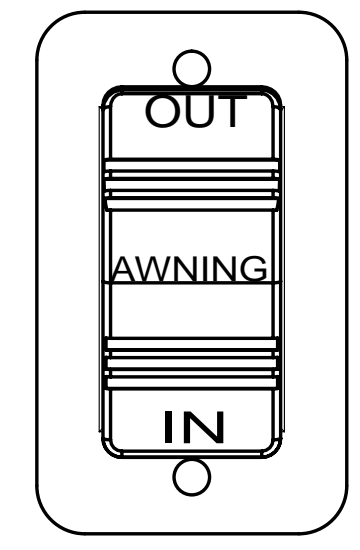
DETAIL CA 1

- JC
14 YEL
(LAMPS)
- JD
14 YEL
(LAMPS)
- JE
14 YEL
(LAMPS)
- NM
14 YEL (23T)
(HEATED TANKS)
- JA
12 YEL
(MONITOR PANEL & PUMP)
(ISOLATED CIRCUIT)
- JB
14 YEL
(FURNACE)
- FFD
12 YEL
(AWNING)
- WB
16 YEL
(LP LEAK DETECTOR)
- ET
16 YEL
(REFRIG)
- JF
14 YEL
(TV/RADIO) (644)



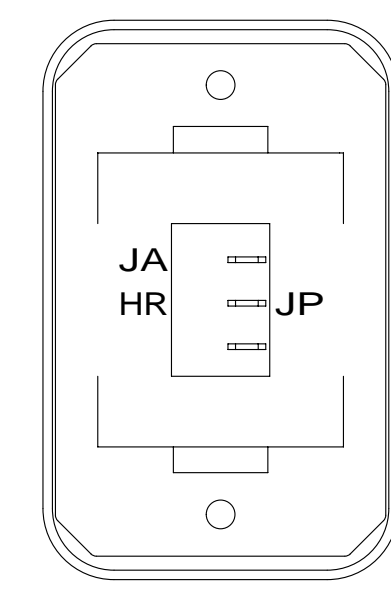
DETAIL CC

- SWITCH-ROCKER
135740-01-CHT
SWITCH-BASE
135741-01-CHT
SWITCH-BEZEL
135742-01-CHT
SCREW
G11-08-08U (2)



DETAIL CD

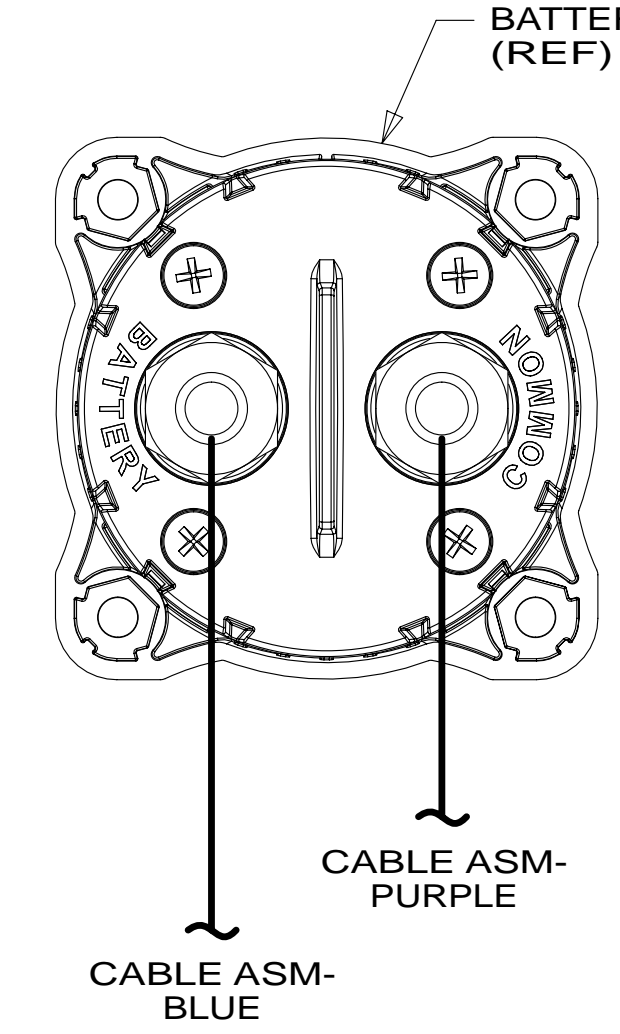
- SWITCH-ROCKER
108357-06-000
ACTUATOR (075) (644)
108356-12-000
SWITCH-BLANK
096241-03-000 (52F)
PLATE-SWITCH
098351-07-CHT
SCREW
G11-06-10U (2)



DETAIL CE

HOLDING TANK HEATER
TURN OFF When Not In Use
SEE OPERATORS MANUAL

- SWITCH-BLANK
138253-01-CHT (1JD)
SWITCH-ROCKER
135740-06-CHT
SWITCH-BASE
135741-01-CHT
SWITCH-BEZEL
135742-01-CHT
SCREW
G11-08-08U (2)
LABEL-SWITCH
134563-01-CHT

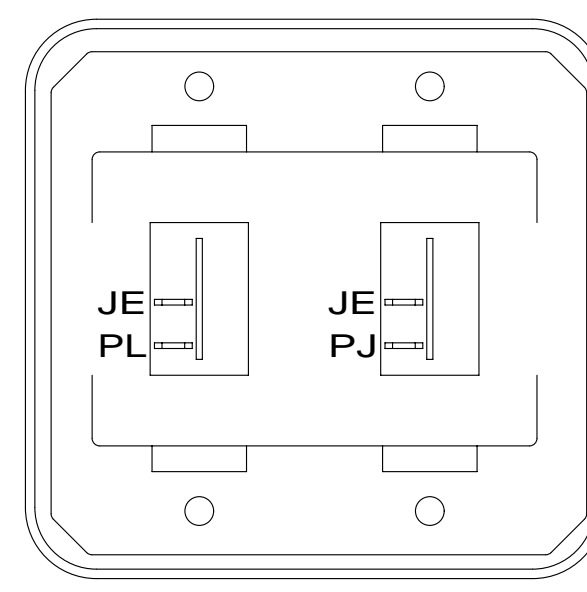


DETAIL CF

BATTERY DISCONNECT (REF)

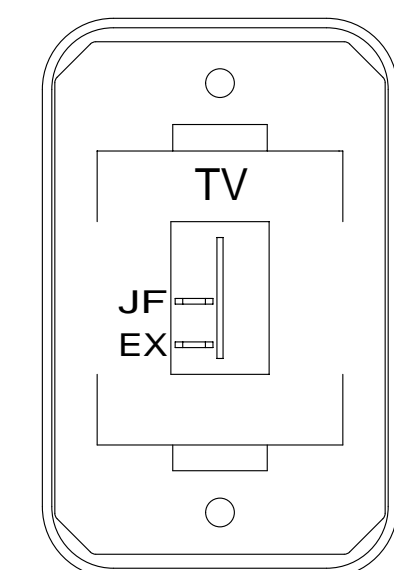
CABLE ASM-PURPLE

CABLE ASM-BLUE



DETAIL CB

- SWITCH-ROCKER
135740-01-CHT (2)
SWITCH-BASE
135741-02-CHT
SWITCH-BEZEL
135742-02-CHT
SCREW
G11-08-08U (4)



DETAIL CG (644)

- SWITCH-ROCKER
135740-01-CHT
SWITCH-BASE
135741-01-CHT
SWITCH-BEZEL
135742-45-CHT
SCREW
G11-08-08U (2)

- (075) CONVENIENCE & APPEARANCE PKG
- (644) GREAT ALASKAN RENTAL PACKAGE
- (52F) AWNING-PATIO
- (1JD) DRAINAGE SYSTEM-HEATED-W/O
- (23T) DRAINAGE SYSTEM-HEATED
- (265) CODES/STANDARDS-CSA/CMVSS
- (1B1) CODES/STANDARDS USA

- (1B1) (265)

1 FOR REFERENCE ONLY. SEE LOAD CENTER/ATS ASM FOR ADDITIONAL INFORMATION.

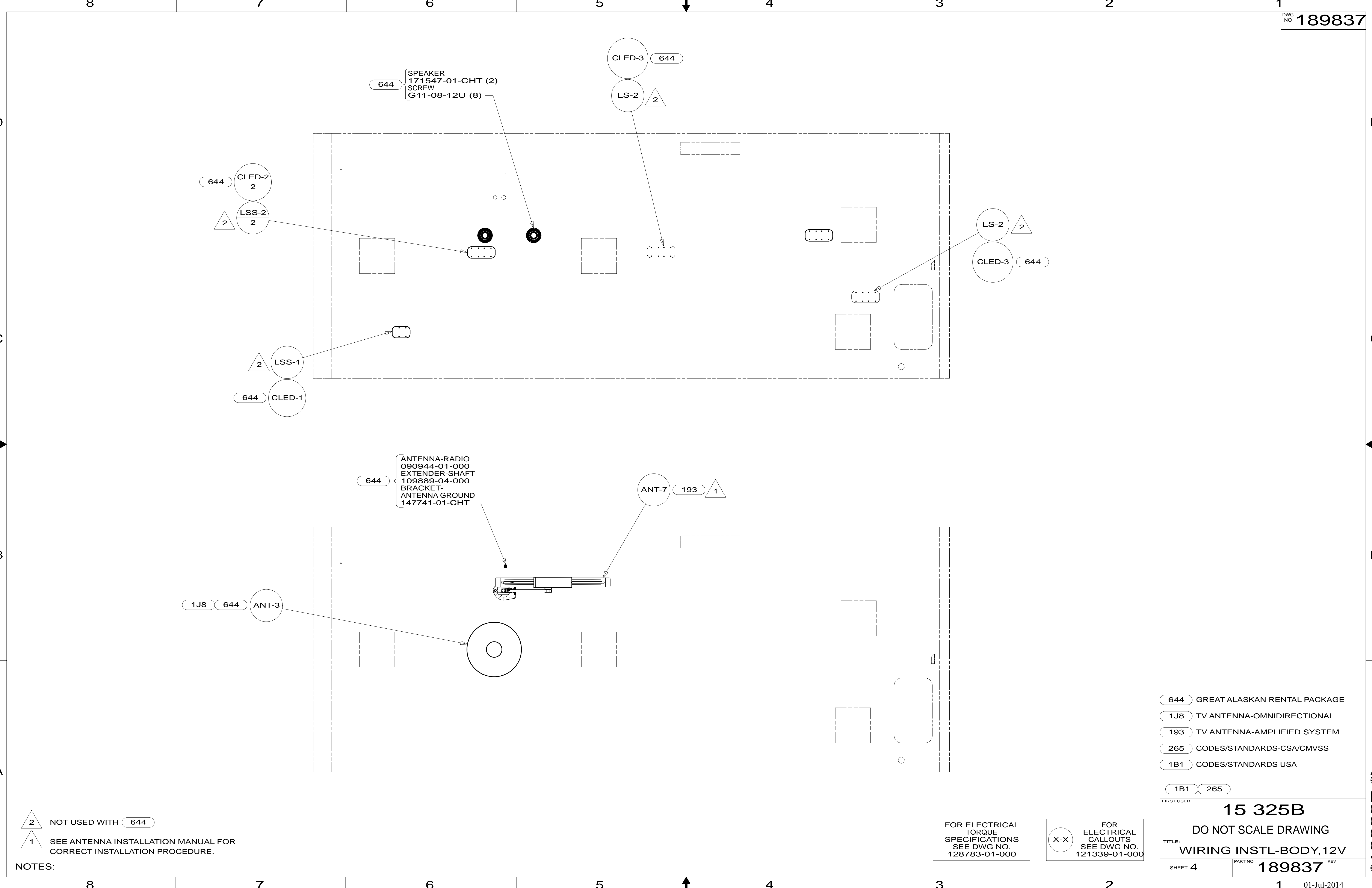
NOTES:

FOR ELECTRICAL TORQUE SPECIFICATIONS SEE DWG NO. 128783-01-000

X-X FOR ELECTRICAL CALLOUTS SEE DWG NO. 121339-01-000

FIRST USED
15 325B
DO NOT SCALE DRAWING
TITLE: **WIRING INSTL-BODY, 12V**
SHEET 3 PART NO **189837** REV
01-Jul-2014

* 189837 * A



2 NOT USED WITH 644
 1 SEE ANTENNA INSTALLATION MANUAL FOR CORRECT INSTALLATION PROCEDURE.

NOTES:

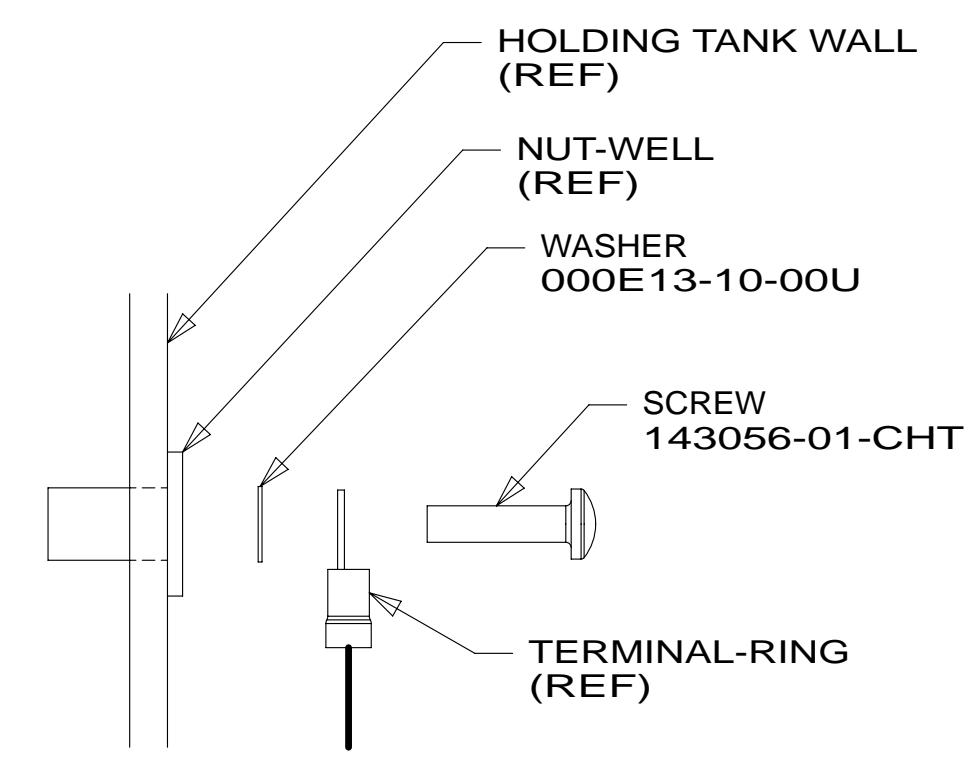
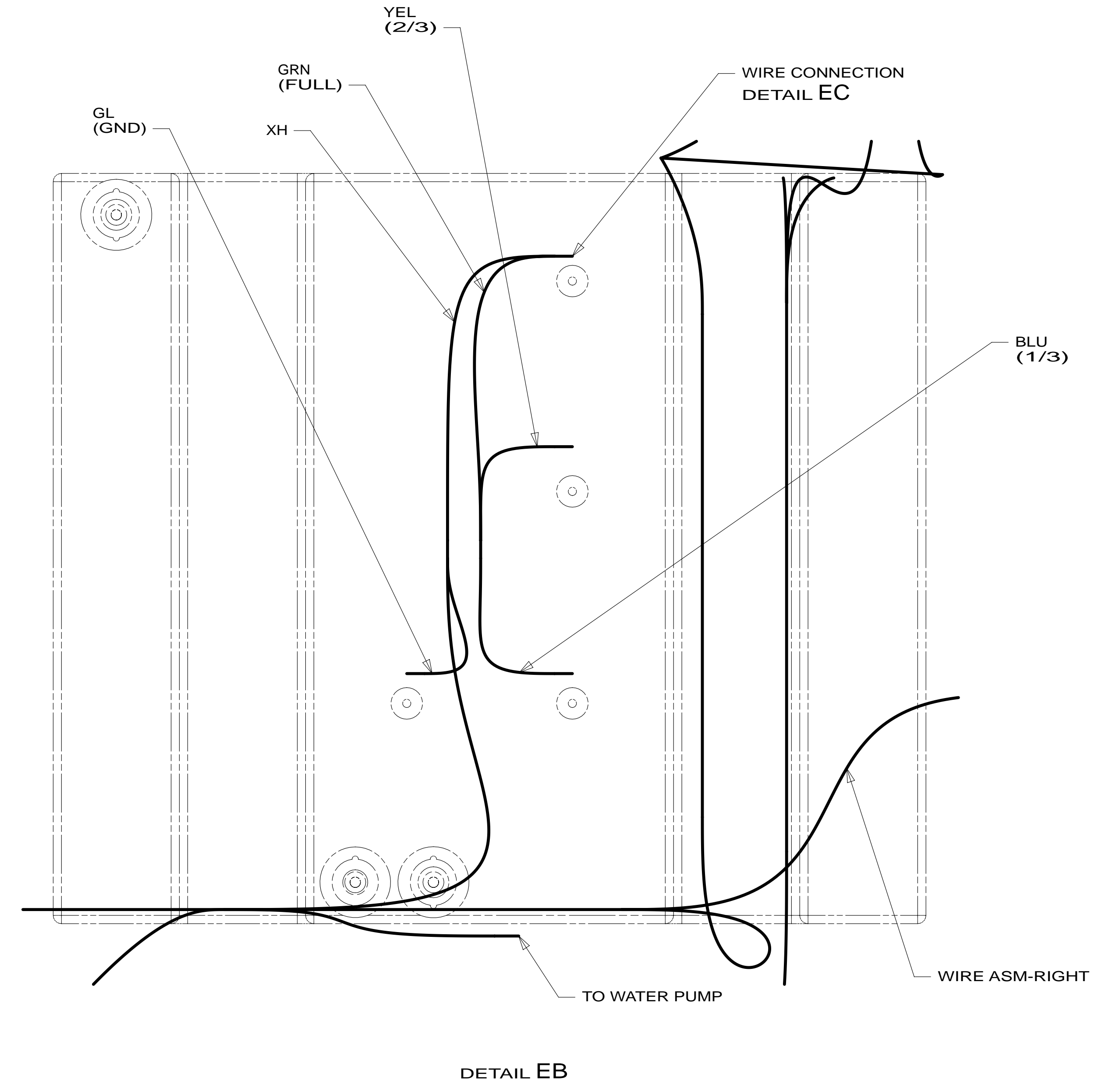
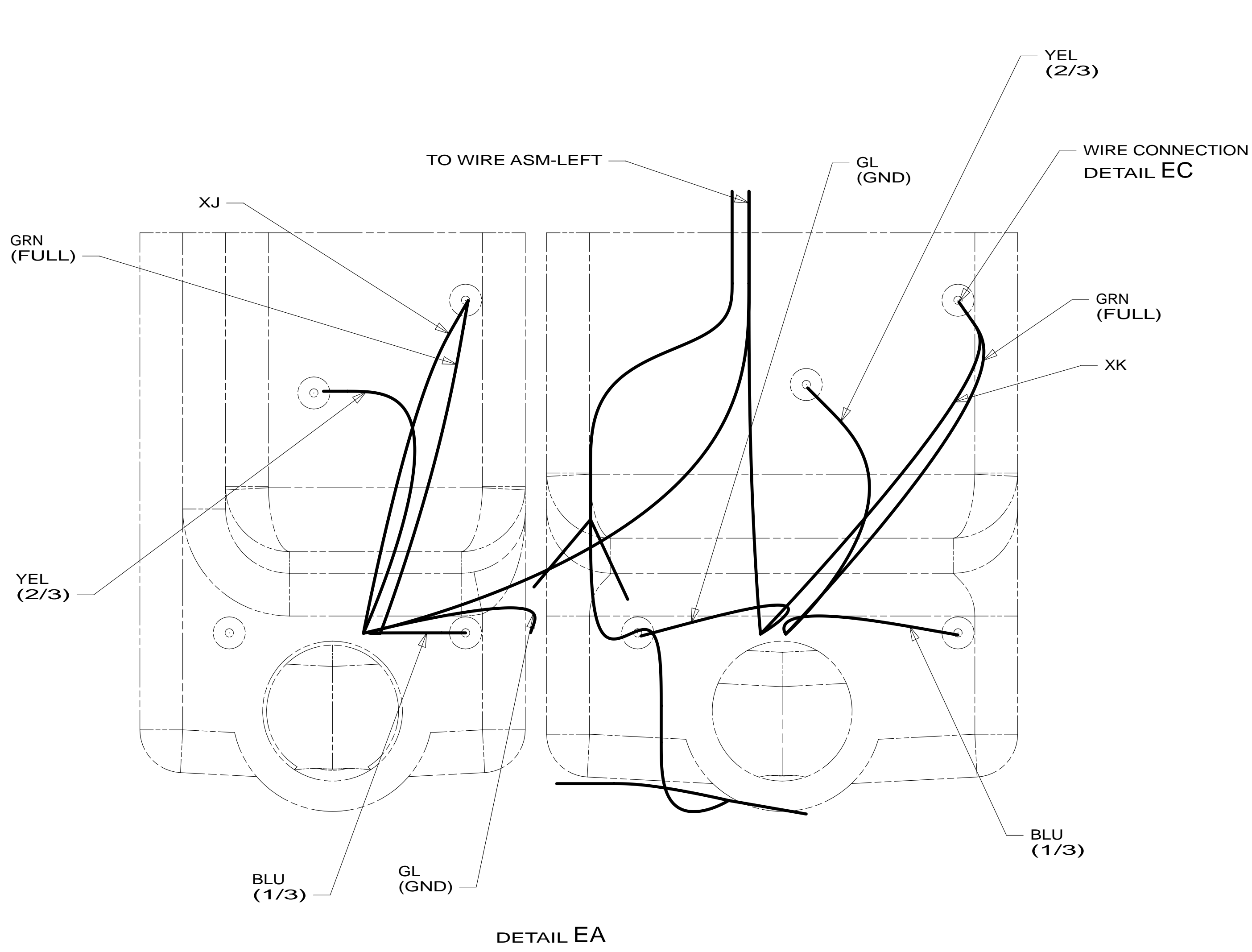
FOR ELECTRICAL TORQUE SPECIFICATIONS SEE DWG NO. 128783-01-000

FOR ELECTRICAL CALLOUTS SEE DWG NO. 121339-01-000

- 644 GREAT ALASKAN RENTAL PACKAGE
- 1J8 TV ANTENNA-OMNIDIRECTIONAL
- 193 TV ANTENNA-AMPLIFIED SYSTEM
- 265 CODES/STANDARDS-CSA/CMVSS
- 1B1 CODES/STANDARDS USA

FIRST USED	15 325B	
TITLE:	DO NOT SCALE DRAWING	
	WIRING INSTL-BODY, 12V	
SHEET 4	PART NO 189837	REV

* 189837 *



1 TYPICAL WIRE ATTACHMENT AT ALL LEVEL PROBES (4 EACH) FOR WATER, MAIN, AND AUX HOLDING TANKS.

FOR ELECTRICAL TORQUE SPECIFICATIONS SEE DWG NO. 128783-01-000

FOR ELECTRICAL CALLOUTS SEE DWG NO. 121339-01-000

265 CODES/STANDARDS-CSA/CMVSS
 1B1 CODES/STANDARDS USA
 1B1 265

FIRST USED	15 325B	
DO NOT SCALE DRAWING		
TITLE: WIRING INSTL-BODY, 12V		
SHEET 5	PART NO 189837	REV

* 189837 * A