



**DANGER**

**Danger of electrical shock, burns or death.** Always remove all power sources before attempting any repair, service or diagnostic work. Power can be present from shore power, generator, inverter or battery. All power sources must be disabled and secured before performing any service.

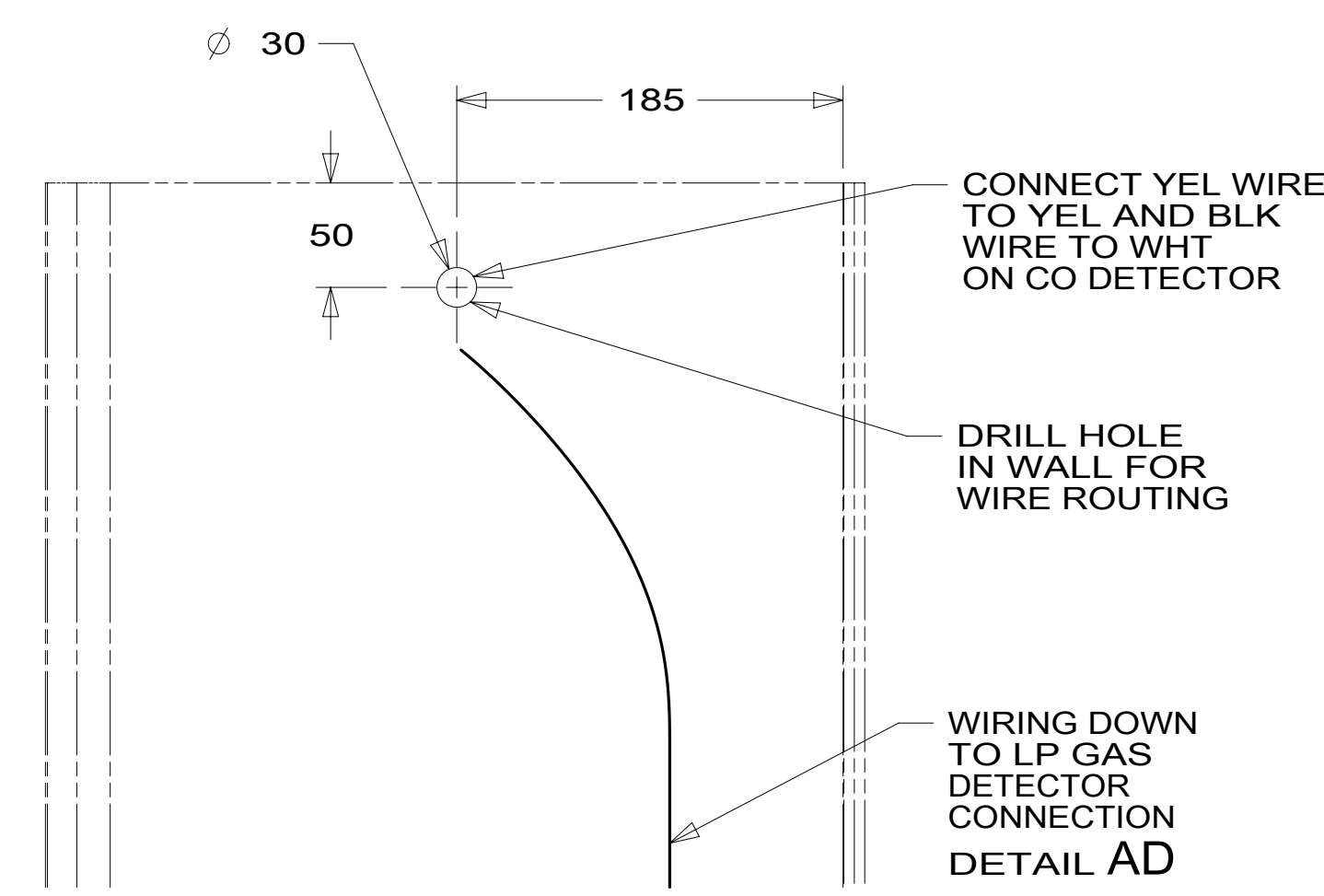
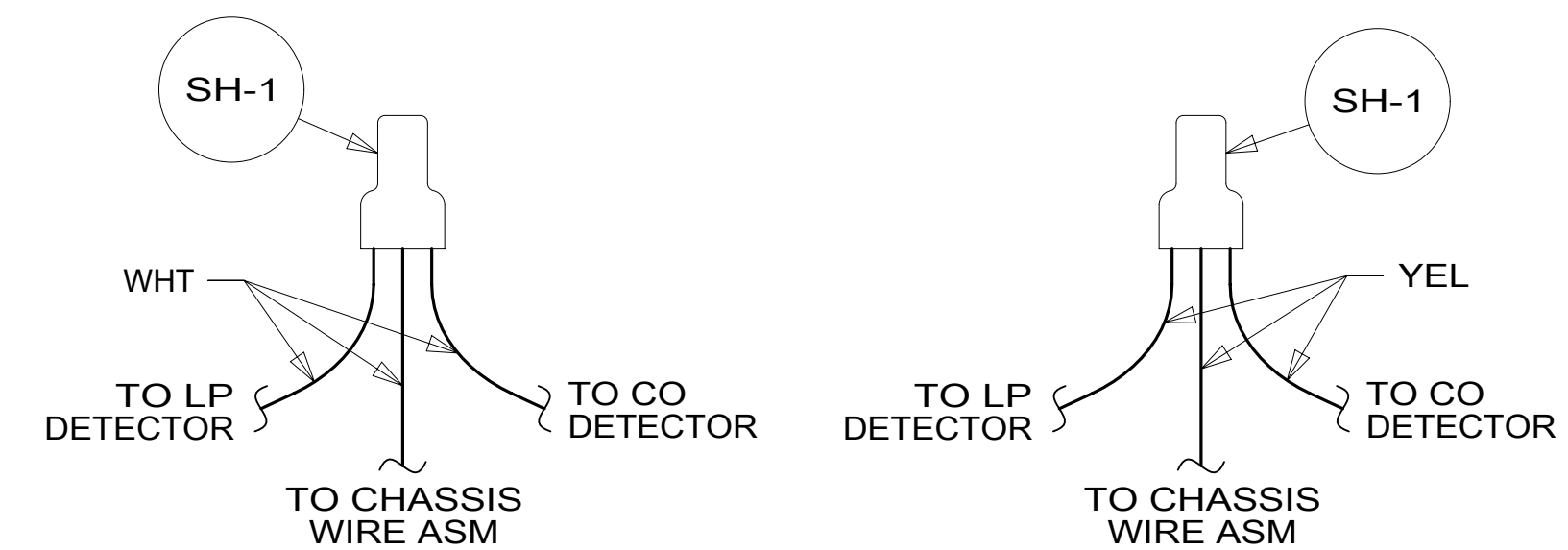
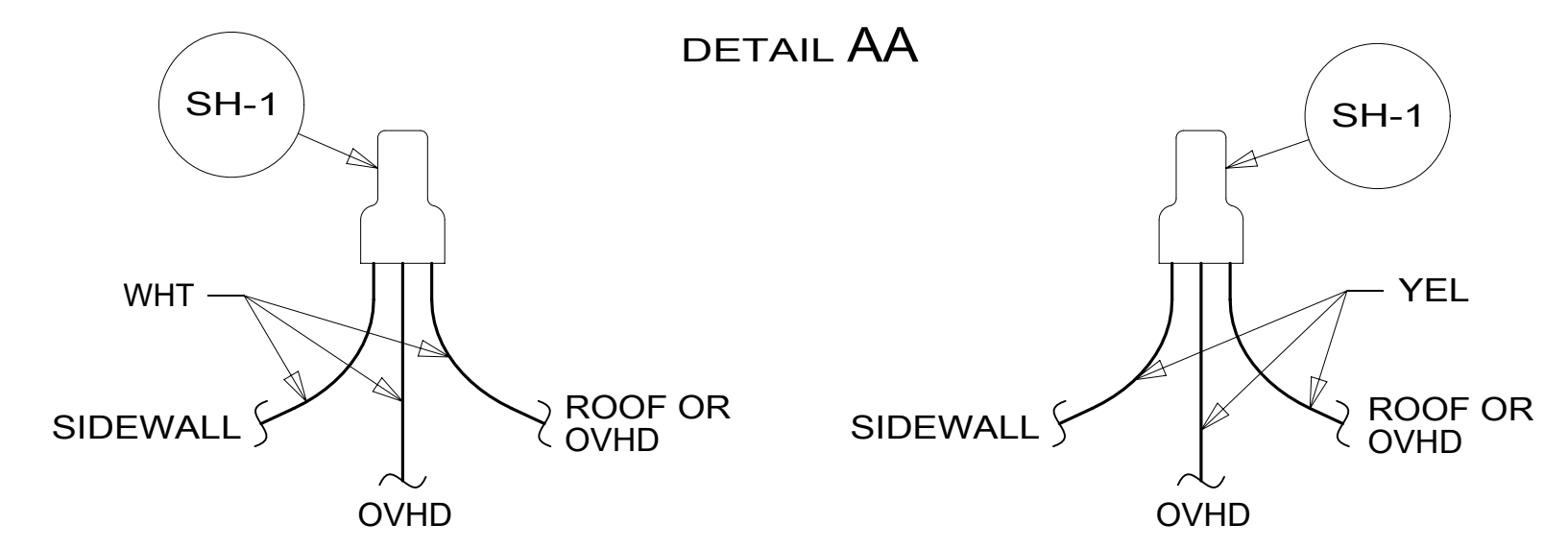
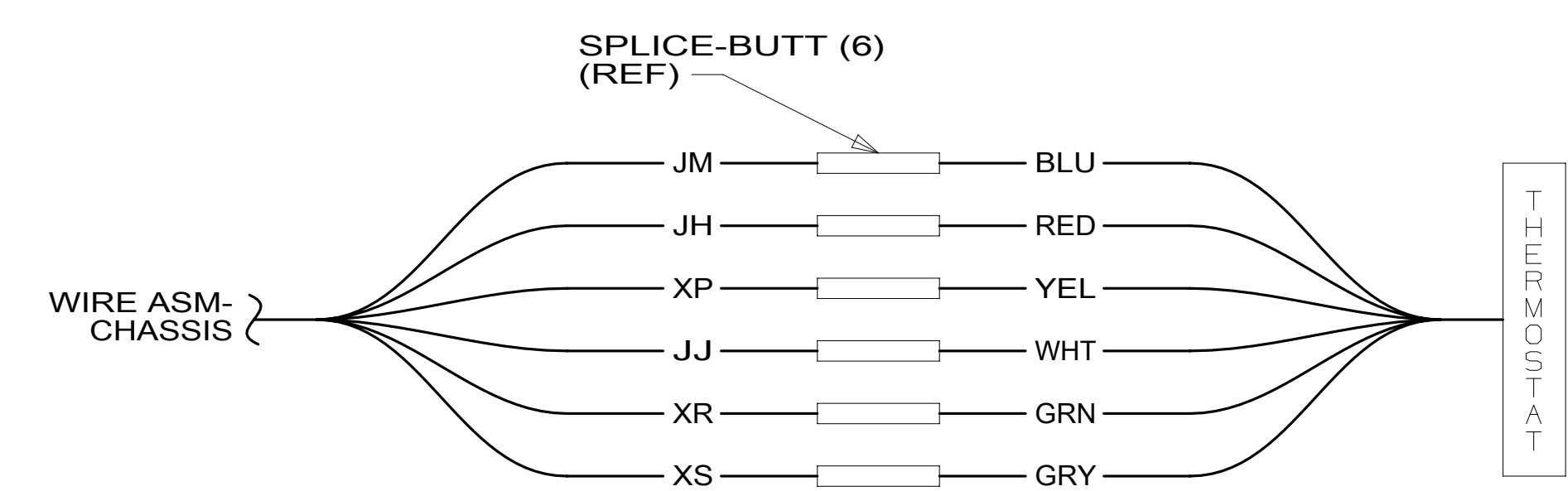
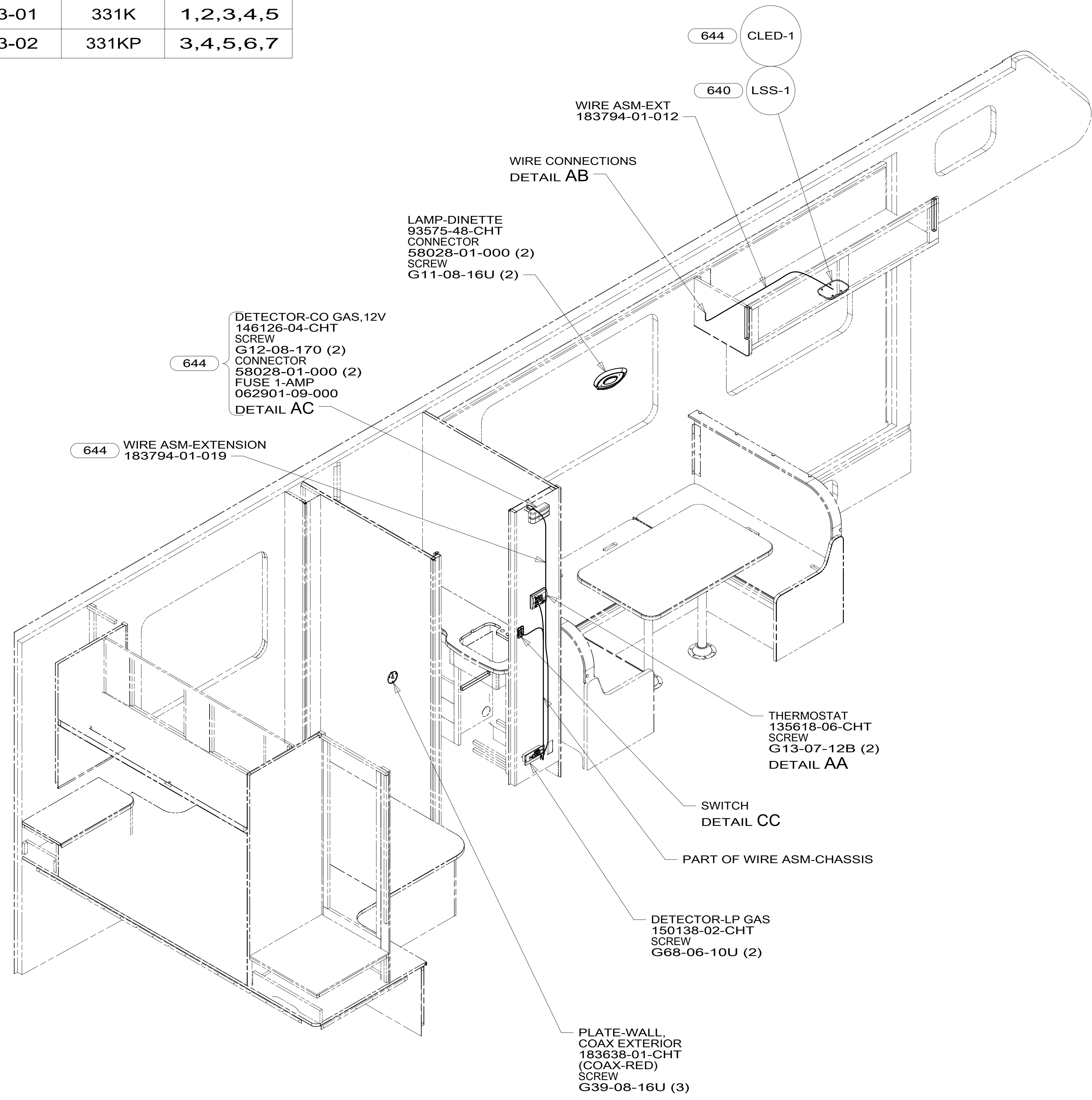


**CAUTION**

If you lack the skills, tools or equipment to perform diagnostic or repair work leave such work to an authorized Winnebago Industries dealer or other qualified shop.

DRAWING NO.	MODEL	SHEET
189833-01	331K	1,2,3,4,5
189833-02	331KP	3,4,5,6,7

RELEASE A	REV/DATE	DWG NO. 189833
REV ZONE	REVISION RECORD	DATE DFT-ORIG



- 640 RENTAL - GAH WITHOUT
- 644 GREAT ALASKAN RENTAL PACKAGE
- 265 CODES/STANDARDS-CSA/CMVSS
- 1B1 CODES/STANDARDS USA

		COPYRIGHT 2014 WINNEBAGO INDUSTRIES, INC.
DFT-ORIG	ORIG. DATE	ALL DIMENSIONS ARE IN MILLIMETERS
CHKR		
P.E.		
M.E.	FIRST USED	
DSNR		
UNSPECIFIED TOLERANCES ARE: WHOLE DIM (X) : 3 ONE-PLACE (X.X) : 1.5 TWO-PLACE (X.XX) : 0.50 ANGLE : 1°		MATERIAL: <b>15 331K/P</b>
THIRD ANGLE PROJECTION		
DO NOT SCALE DRAWING		REFER TO ES0018 FOR FASTENER TIGHTENING GUIDELINES
TITLE: <b>WIRING INSTL-BODY, 12V</b>		
SHEET 1 OF 7	PART NO. 189833	REV

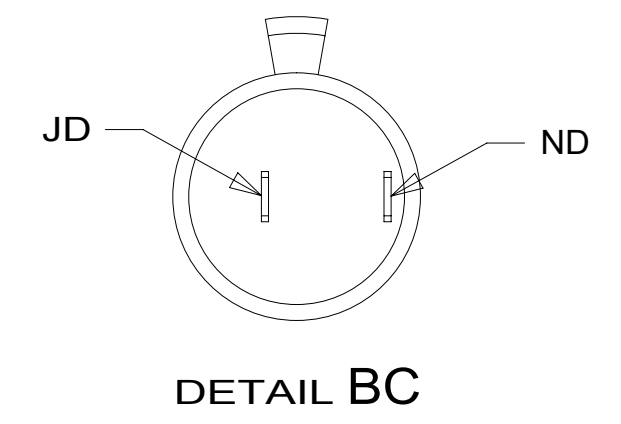
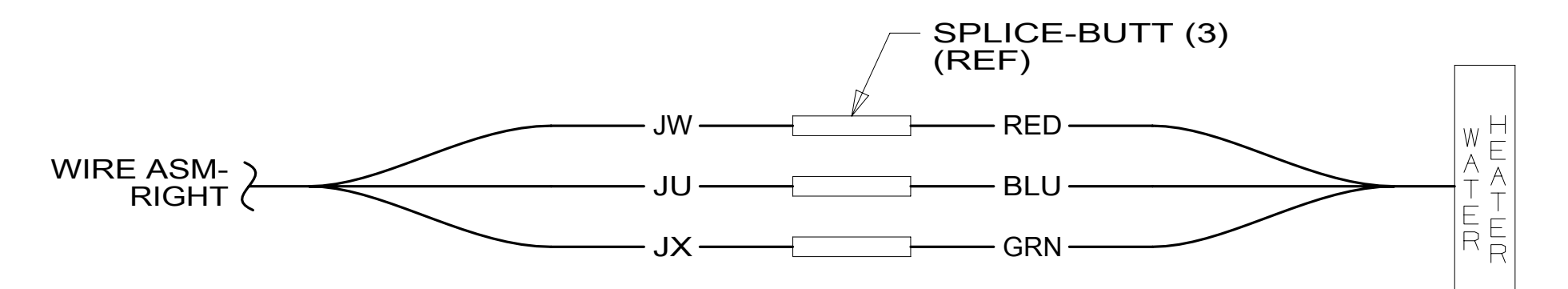
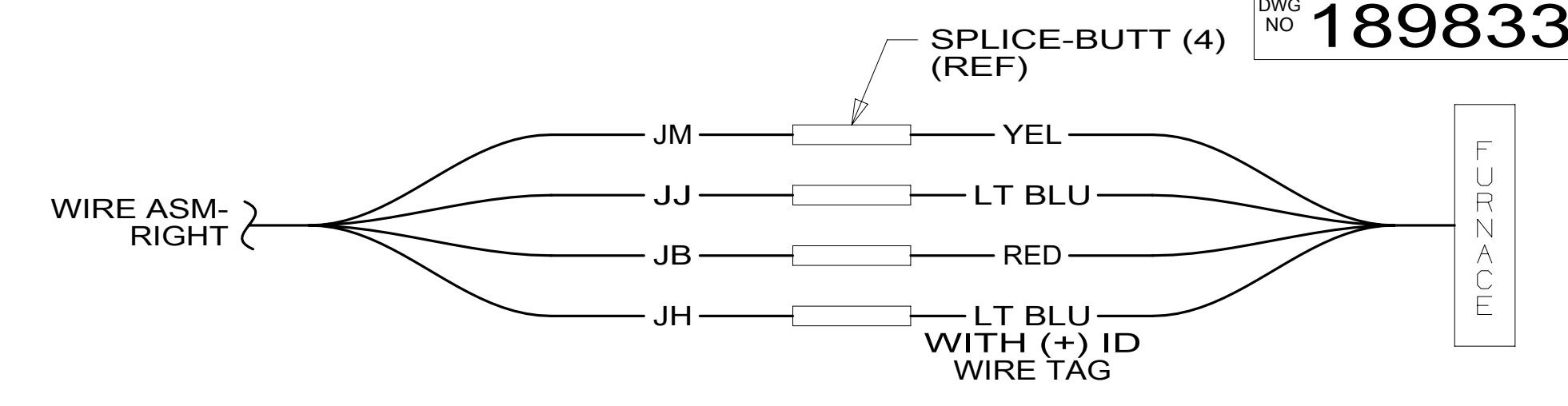
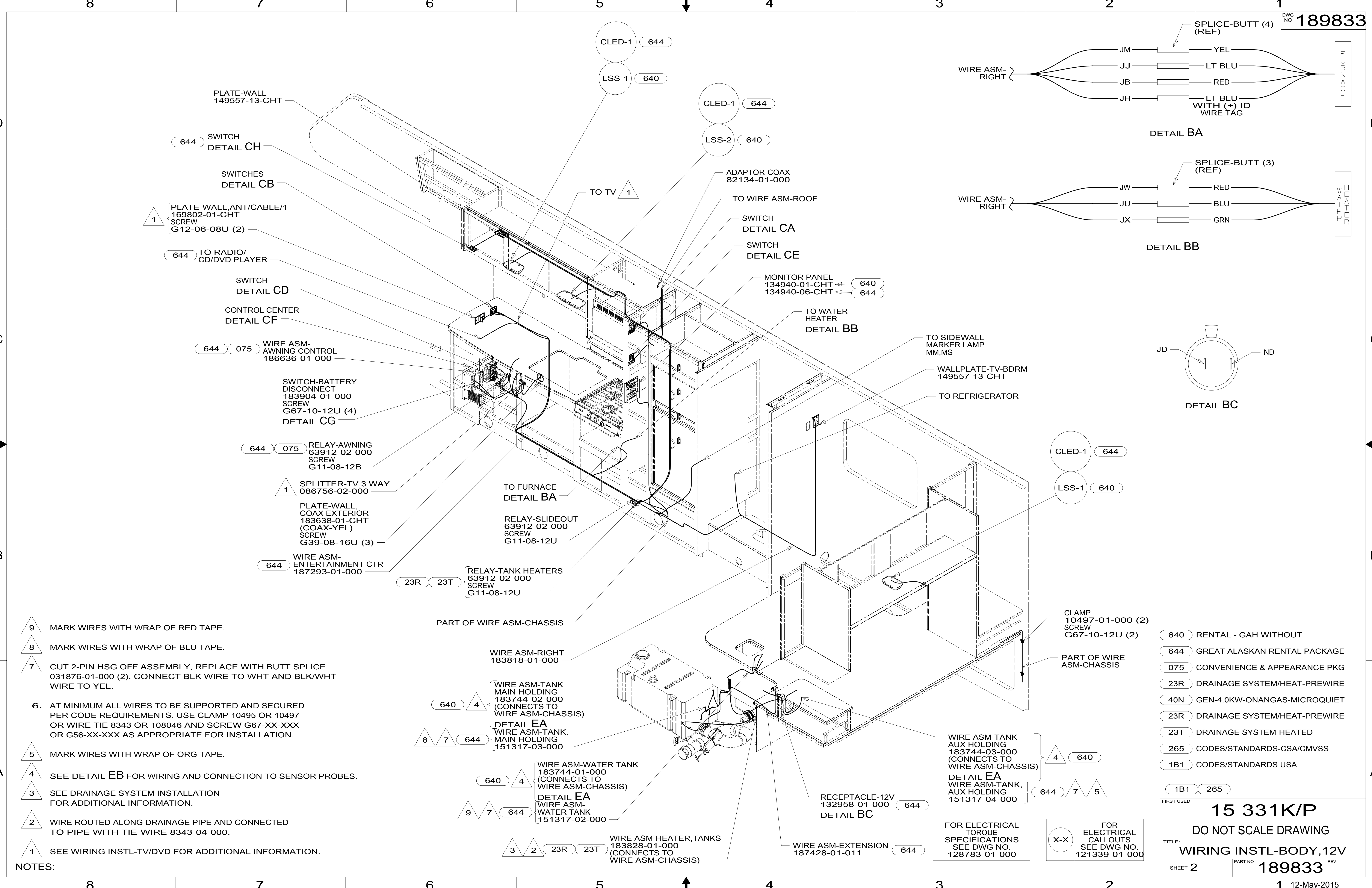
NOTES:

1. AT MINIMUM ALL WIRES TO BE SUPPORTED AND SECURED PER CODE REQUIREMENTS. USE CLAMP 10495 OR 10497 OR WIRE TIE 8343 OR 108046 AND SCREW G67-XX-XXX OR G56-XX-XXX AS APPROPRIATE FOR INSTALLATION.

FOR ELECTRICAL TORQUE SPECIFICATIONS SEE DWG NO. 128783-01-000

FOR ELECTRICAL CALLOUTS SEE DWG NO. 121339-01-000

\*189833 A\*



- NOTES:
- 9 MARK WIRES WITH WRAP OF RED TAPE.
  - 8 MARK WIRES WITH WRAP OF BLU TAPE.
  - 7 CUT 2-PIN HSG OFF ASSEMBLY, REPLACE WITH BUTT SPLICE 031876-01-000 (2). CONNECT BLK WIRE TO WHT AND BLK/WHT WIRE TO YEL.
  - 6. AT MINIMUM ALL WIRES TO BE SUPPORTED AND SECURED PER CODE REQUIREMENTS. USE CLAMP 10495 OR 10497 OR WIRE TIE 8343 OR 108046 AND SCREW G67-XX-XXX OR G56-XX-XXX AS APPROPRIATE FOR INSTALLATION.
  - 5 MARK WIRES WITH WRAP OF ORG TAPE.
  - 4 SEE DETAIL EB FOR WIRING AND CONNECTION TO SENSOR PROBES.
  - 3 SEE DRAINAGE SYSTEM INSTALLATION FOR ADDITIONAL INFORMATION.
  - 2 WIRE ROUTED ALONG DRAINAGE PIPE AND CONNECTED TO PIPE WITH TIE-WIRE 8343-04-000.
  - 1 SEE WIRING INSTL-TV/DVD FOR ADDITIONAL INFORMATION.

- 640 RENTAL - GAH WITHOUT
- 644 GREAT ALASKAN RENTAL PACKAGE
- 075 CONVENIENCE & APPEARANCE PKG
- 23R DRAINAGE SYSTEM/HEAT-PREWIRE
- 40N GEN-4.0KW-ONANGAS-MICROQUIET
- 23R DRAINAGE SYSTEM/HEAT-PREWIRE
- 23T DRAINAGE SYSTEM-HEATED
- 265 CODES/STANDARDS-CSA/CMVSS
- 1B1 CODES/STANDARDS USA

FIRST USED		15 331K/P	
DO NOT SCALE DRAWING			
TITLE: WIRING INSTL-BODY, 12V			
SHEET 2	PART NO	189833	REV
		12-May-2015	

FOR ELECTRICAL TORQUE SPECIFICATIONS SEE DWG NO. 128783-01-000

FOR ELECTRICAL CALLOUTS SEE DWG NO. 121339-01-000

\*189833

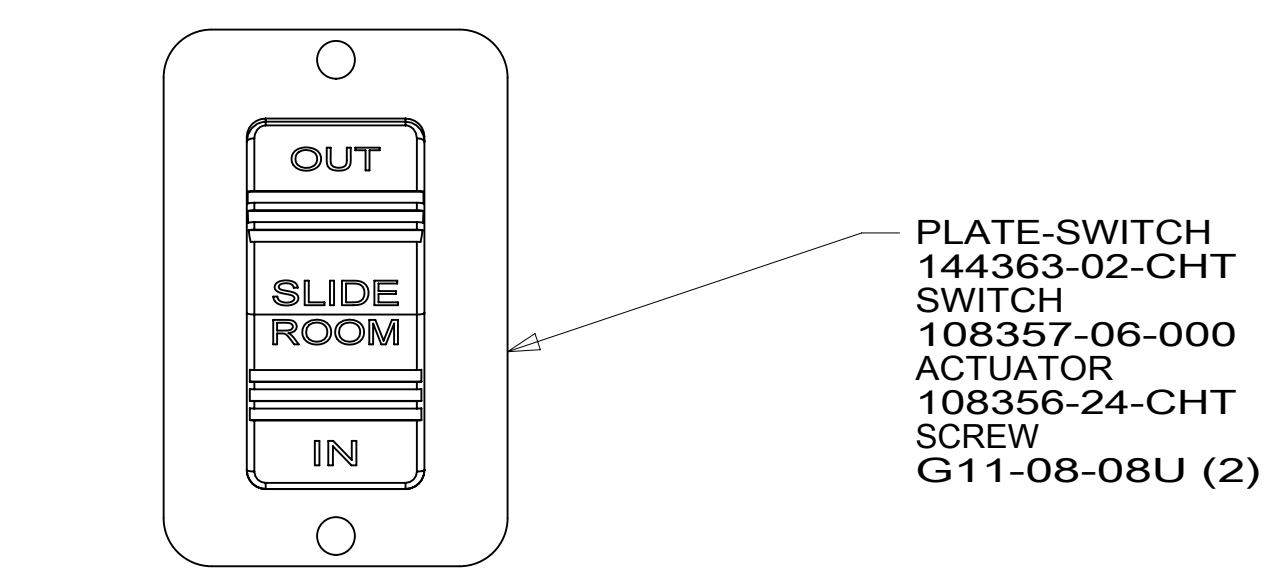
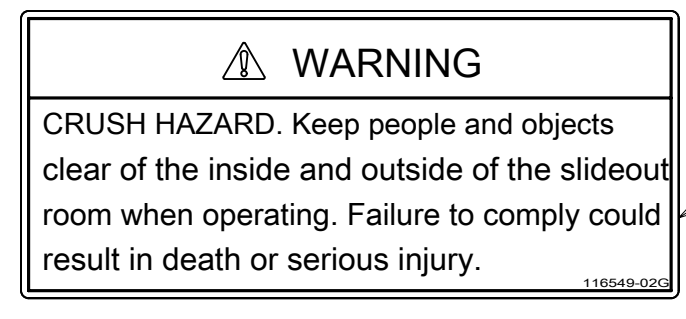
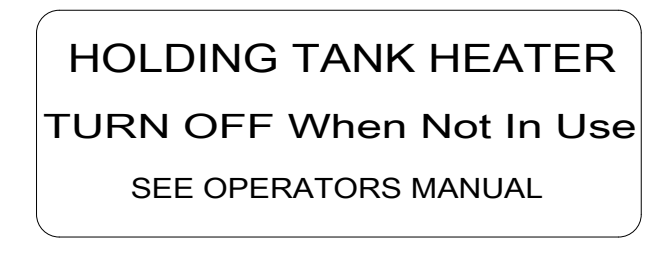
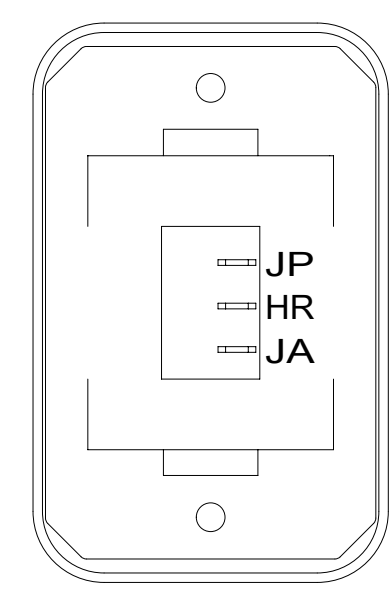


PLATE-SWITCH  
144363-02-CHT  
SWITCH  
108357-06-000  
ACTUATOR  
108356-24-CHT  
SCREW  
G11-08-08U (2)

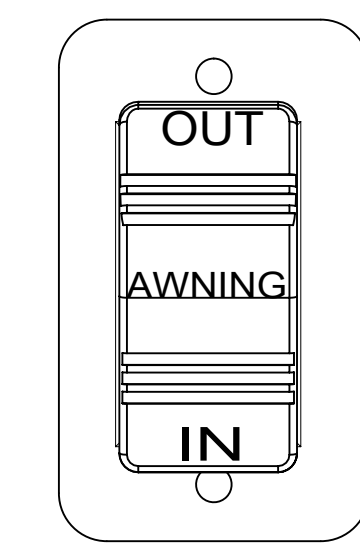


LABEL-WARNING, SLIDEOUT  
116549-02-000

DETAIL CA



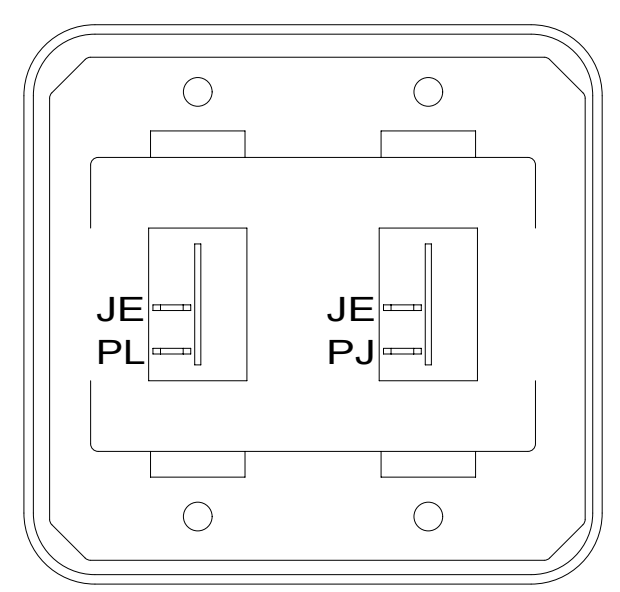
DETAIL CE 23T 23R



SWITCH-ROCKER  
108357-06-000  
ACTUATOR  
108356-12-CHT  
SWITCH-BLANK  
096241-03-000  
PLATE-SWITCH  
098351-07-CHT  
SCREW  
G11-06-10U (2)

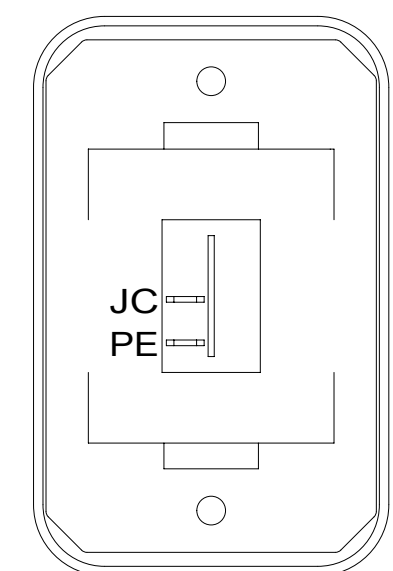
075 644  
52F

DETAIL CD 2



SWITCH-ROCKER  
135740-01-CHT (2)  
SWITCH-BASE  
135741-02-CHT  
SWITCH-BEZEL  
135742-02-CHT  
SCREW  
G11-08-08U (4)

DETAIL CB



SWITCH-ROCKER  
135740-01-CHT  
SWITCH-BASE  
135741-01-CHT  
SWITCH-BEZEL  
135742-01-CHT  
SCREW  
G11-08-08U (2)

DETAIL CC

SWITCH-ROCKER  
108357-06-000  
ACTUATOR-SWITCH  
108356-12-CHT

SWITCH-ROCKER  
108357-14-000  
ACTUATOR-SWITCH  
108356-28-CHT

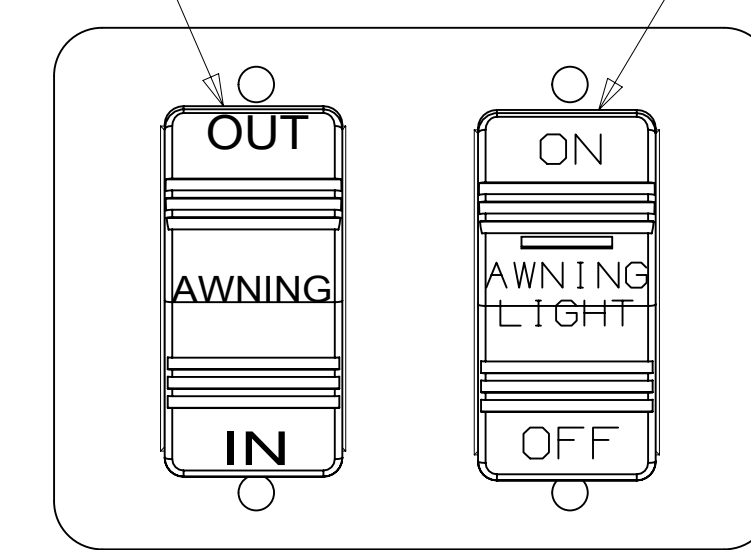
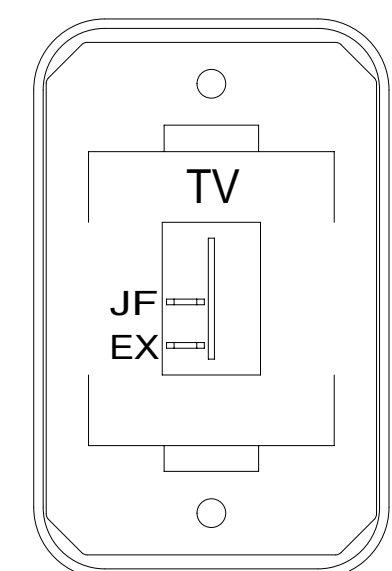


PLATE-SWITCH  
98351-22-CHT  
SCREW  
G11-06-10U (4)

DETAIL CD 52N 3

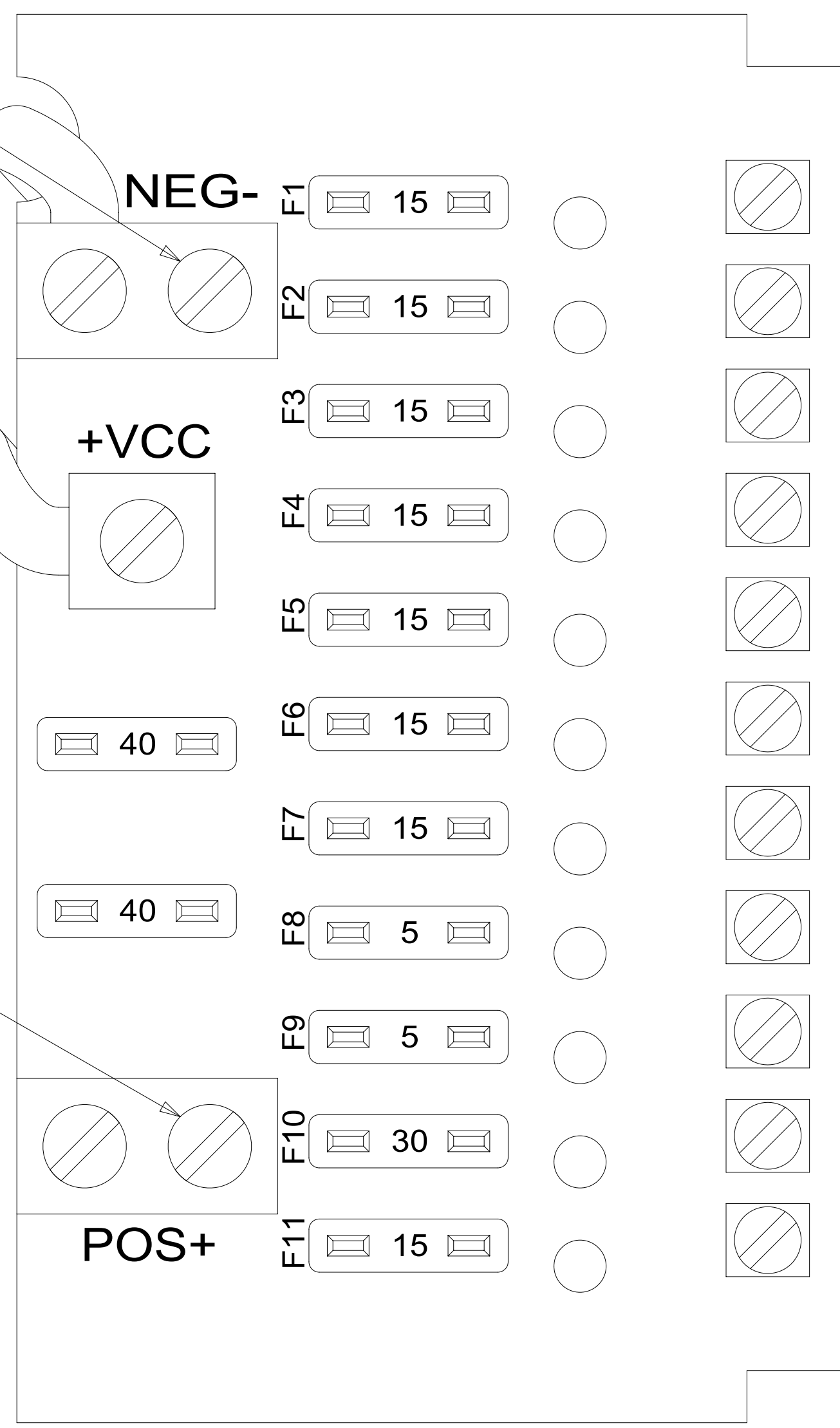


SWITCH-ROCKER  
135740-01-CHT  
SWITCH-BASE  
135741-01-CHT  
SWITCH-BEZEL  
135742-45-CHT  
SCREW  
G11-08-08U (2)

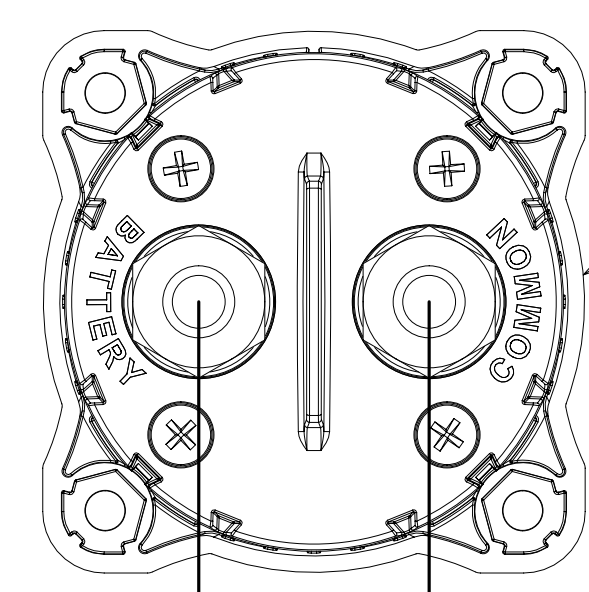
DETAIL CH 644

8 GRN  
(GROUND)

J  
BLK  
(BATTERY COMPT)



- JC 14 YEL (LAMPS)
- JD 14 YEL (LAMPS)
- JE 14 YEL (LAMPS)
- NM 12 YEL (23T) (HEATED TANKS)
- JA 12 YEL (MONITOR PANEL & PUMP) (ISOLATED CIRCUIT)
- JB 14 YEL (FURNACE)
- FFD 12 YEL (AWNING)
- WB 16 YEL (LP LEAK DETECTOR)
- ET 16 YEL (REFRIG)
- LLK 10 YEL (SLIDEOUT)
- JF 14 YEL (TV/RADIO) 644



BATTERY DISCONNECT (REF)

CABLE ASM-PUR  
CABLE ASM-BLU

DETAIL CG

- 52N AWNING - PATIO, ELECTRIC
- 075 CONVENIENCE & APPEARANCE PKG
- 644 GREAT ALASKAN RENTAL PACKAGE
- 52F AWNING-PATIO
- 23R DRAINAGE SYSTEM/HEAT-PREWIRE
- 23T DRAINAGE SYSTEM-HEATED
- 265 CODES/STANDARDS-CSA/CMVSS
- 1B1 CODES/STANDARDS USA

1B1 265

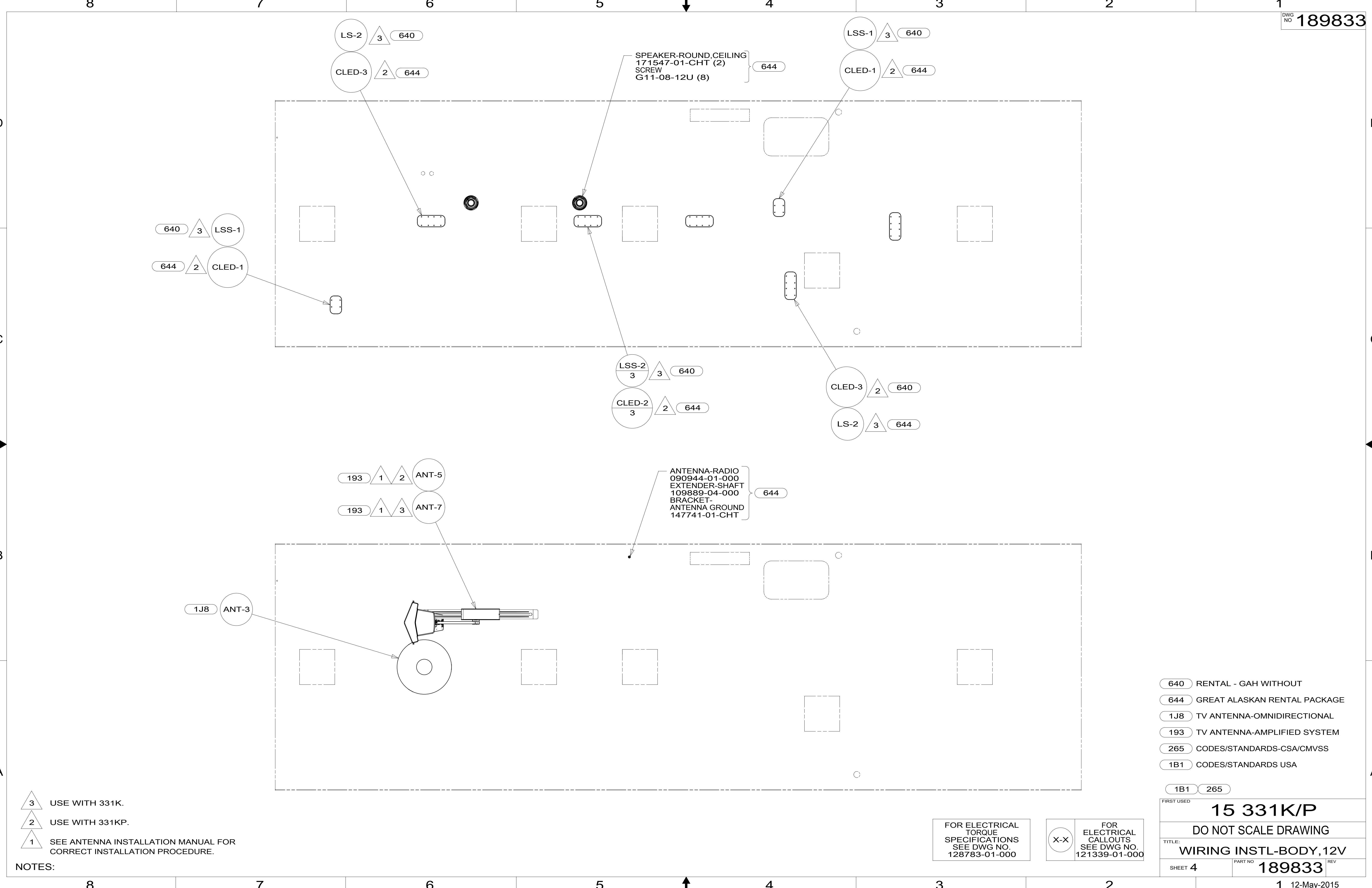
FIRST USED	15 331K/P
TITLE:	DO NOT SCALE DRAWING
WIRING INSTL-BODY, 12V	
SHEET 3	PART NO 189833 REV
12-May-2015	

FOR ELECTRICAL TORQUE SPECIFICATIONS SEE DWG NO. 128783-01-000

FOR ELECTRICAL CALLOUTS SEE DWG NO. 121339-01-000

- NOTES:
- 3 USED WITH 331KP.
  - 2 USED WITH 331K.
  - 1 FOR REFERENCE ONLY. SEE LOAD CENTER/ATS ASM FOR ADDITIONAL INFORMATION.

\* 189833 A \*



- NOTES:
- 3 USE WITH 331K.
  - 2 USE WITH 331KP.
  - 1 SEE ANTENNA INSTALLATION MANUAL FOR CORRECT INSTALLATION PROCEDURE.

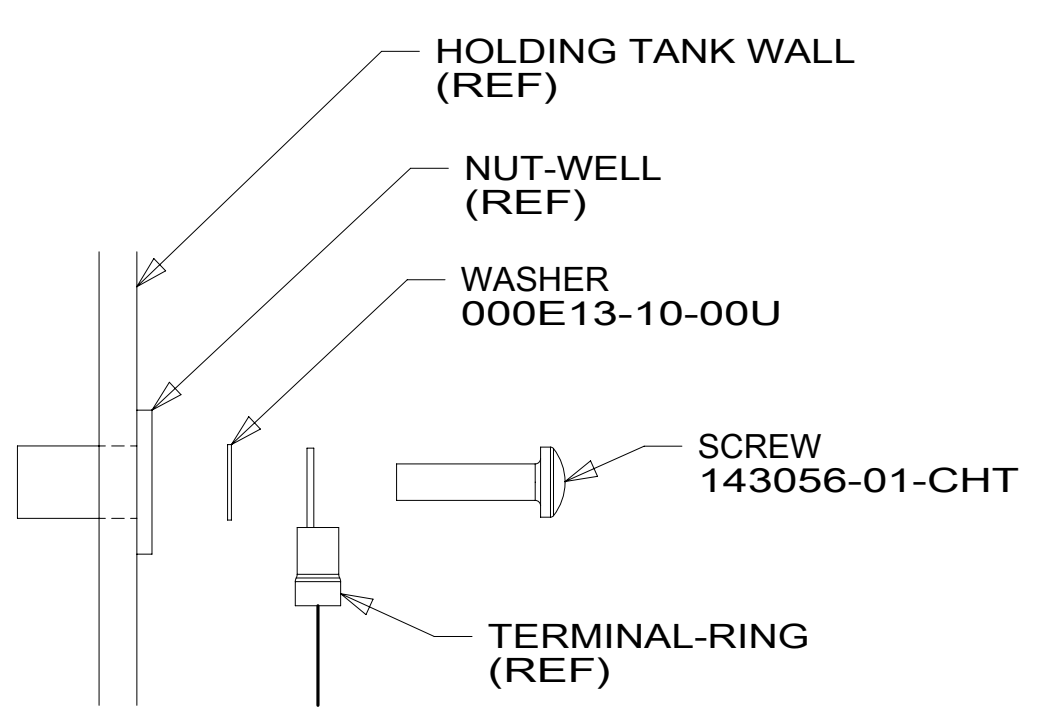
FOR ELECTRICAL TORQUE SPECIFICATIONS SEE DWG NO. 128783-01-000

FOR ELECTRICAL CALLOUTS SEE DWG NO. 121339-01-000

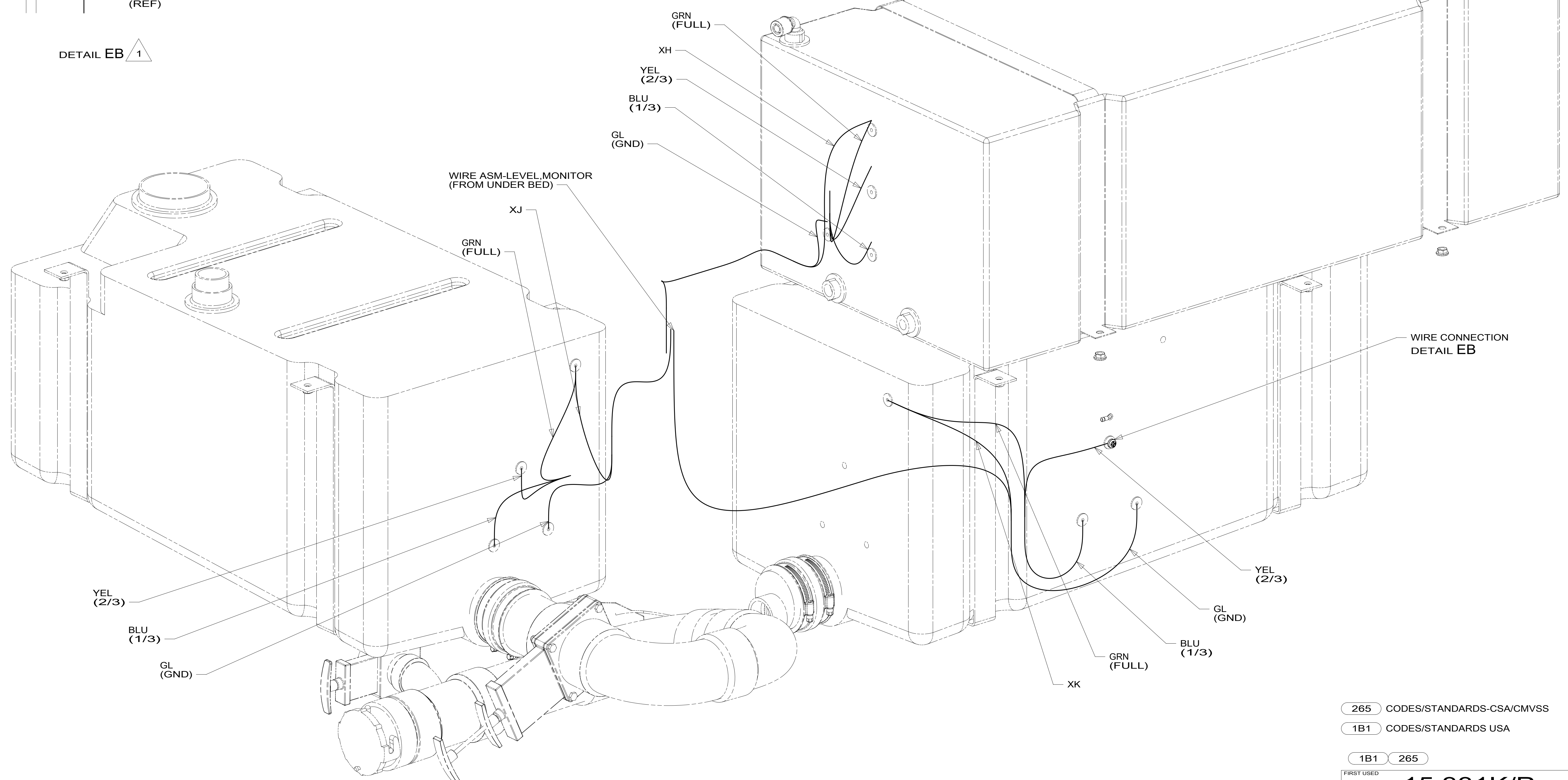
- 640 RENTAL - GAH WITHOUT
- 644 GREAT ALASKAN RENTAL PACKAGE
- 1J8 TV ANTENNA-OMNIDIRECTIONAL
- 193 TV ANTENNA-AMPLIFIED SYSTEM
- 265 CODES/STANDARDS-CSA/CMVSS
- 1B1 CODES/STANDARDS USA

FIRST USED	15 331K/P	
DO NOT SCALE DRAWING		
TITLE: WIRING INSTL-BODY, 12V		
SHEET 4	PART NO 189833	REV
1 12-May-2015		

\*189833\*



DETAIL EB 1



WIRE CONNECTION  
 DETAIL EB

DETAIL EA

1 TYPICAL WIRE ATTACHMENT AT ALL LEVEL PROBES (4 EACH)  
 FOR WATER, MAIN, AND AUX HOLDING TANKS.

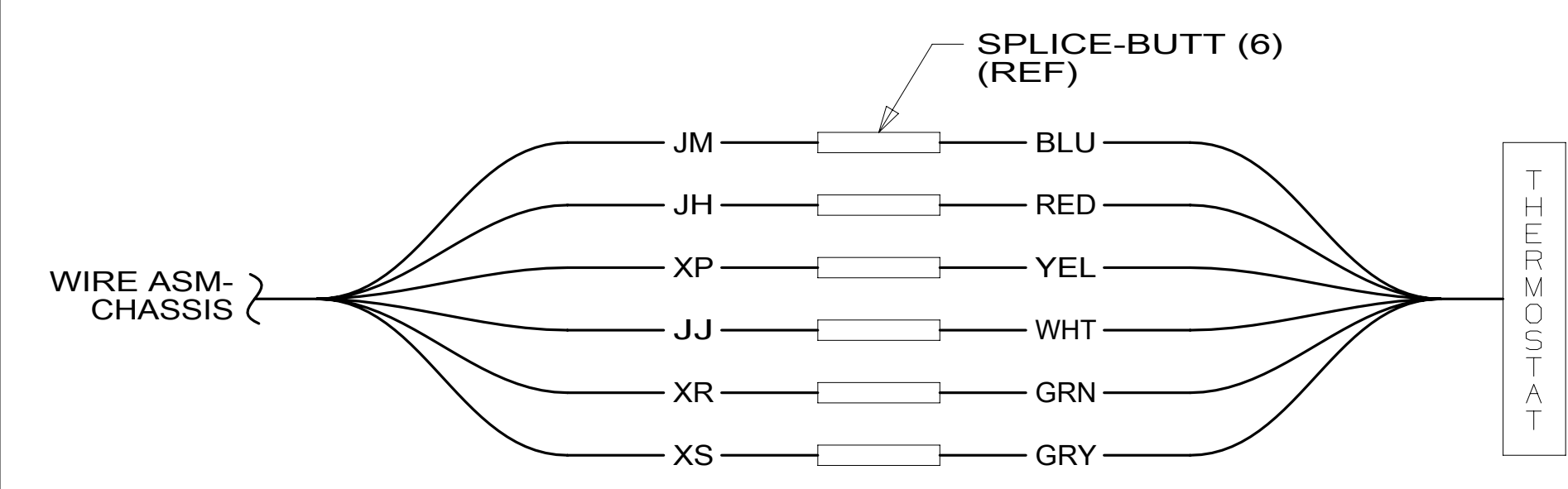
FOR ELECTRICAL TORQUE SPECIFICATIONS SEE DWG NO. 128783-01-000

FOR ELECTRICAL CALLOUTS SEE DWG NO. 121339-01-000

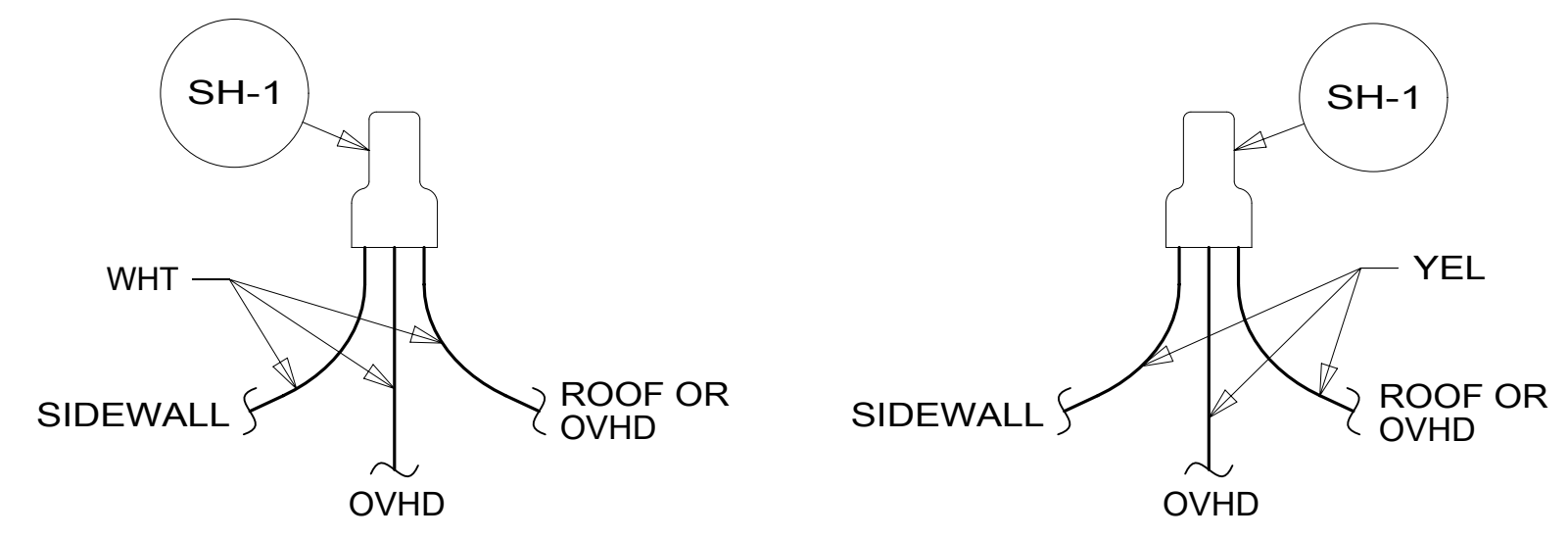
- 265 CODES/STANDARDS-CSA/CMVSS
- 1B1 CODES/STANDARDS USA
- 1B1 265

FIRST USED		<b>15 331K/P</b>	
DO NOT SCALE DRAWING			
TITLE: <b>WIRING INSTL-BODY, 12V</b>			
SHEET 5	PART NO	<b>189833</b>	REV
		1	12-May-2015

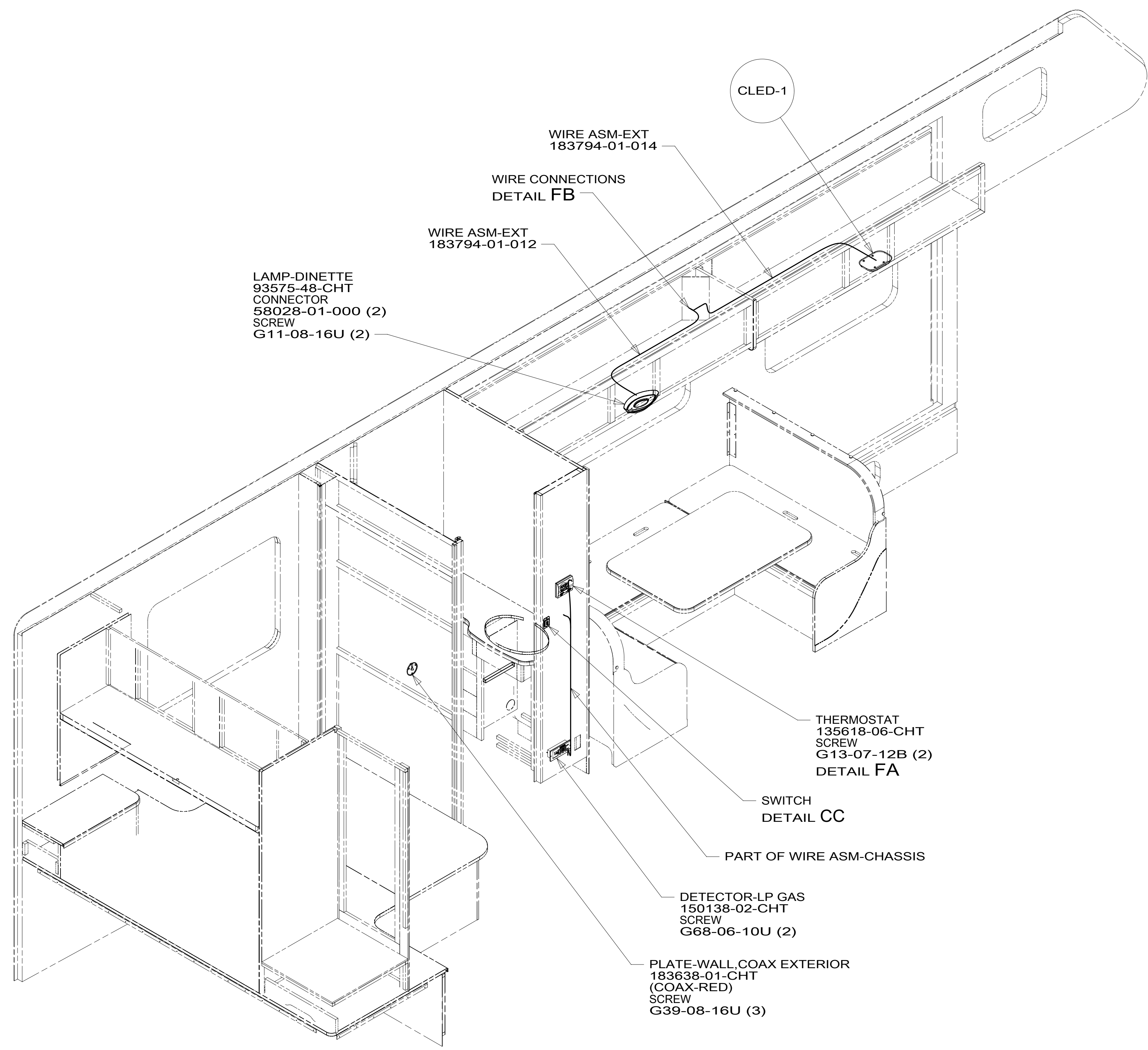
\*189833\*



DETAIL FA



DETAIL FB



NOTES:  
 1. AT MINIMUM ALL WIRES TO BE SUPPORTED AND SECURED PER CODE REQUIREMENTS. USE CLAMP 10495 OR 10497 OR WIRE TIE 8343 OR 108046 AND SCREW G67-XX-XXX OR G56-XX-XXX AS APPROPRIATE FOR INSTALLATION.

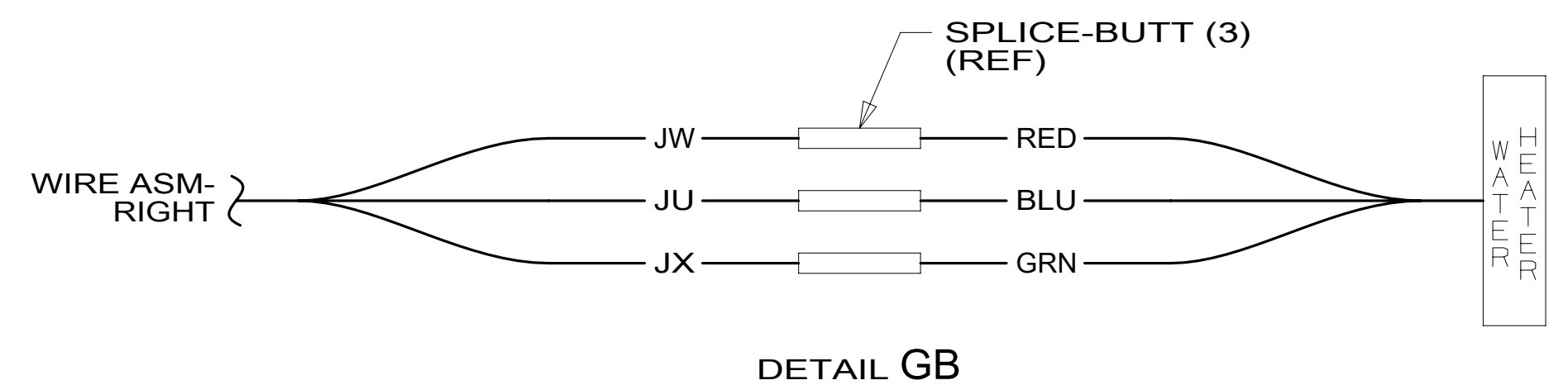
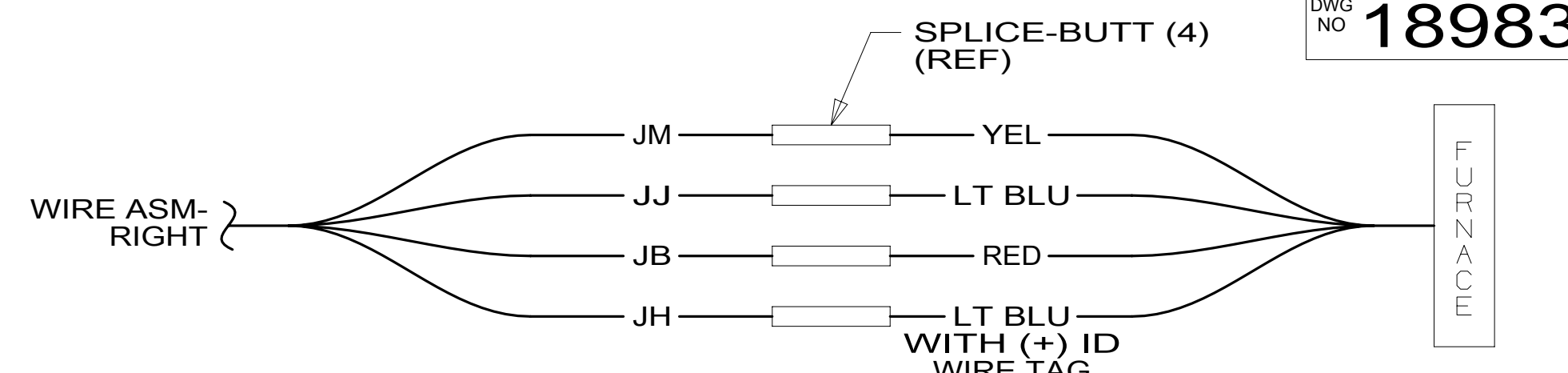
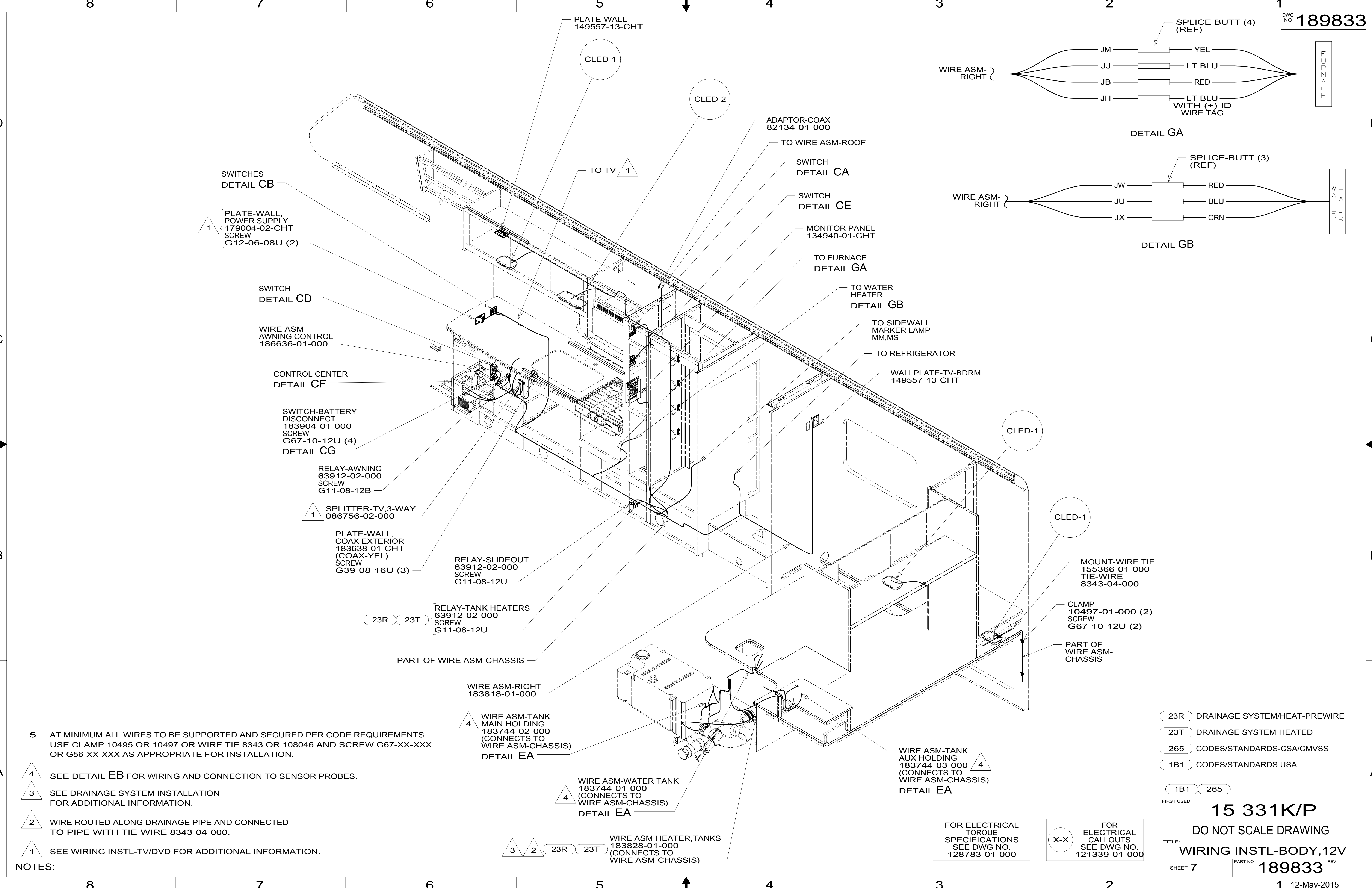
FOR ELECTRICAL TORQUE SPECIFICATIONS SEE DWG NO. 128783-01-000

FOR ELECTRICAL CALLOUTS SEE DWG NO. 121339-01-000

265	CODES/STANDARDS-CSA/CMVSS
1B1	CODES/STANDARDS USA
1B1	265

FIRST USED	15 331K/P	
TITLE:	DO NOT SCALE DRAWING	
	WIRING INSTL-BODY, 12V	
SHEET 6	PART NO 189833	REV

\*189833\*



5. AT MINIMUM ALL WIRES TO BE SUPPORTED AND SECURED PER CODE REQUIREMENTS. USE CLAMP 10495 OR 10497 OR WIRE TIE 8343 OR 108046 AND SCREW G67-XX-XXX OR G56-XX-XXX AS APPROPRIATE FOR INSTALLATION.
- 4 SEE DETAIL EB FOR WIRING AND CONNECTION TO SENSOR PROBES.
- 3 SEE DRAINAGE SYSTEM INSTALLATION FOR ADDITIONAL INFORMATION.
- 2 WIRE ROUTED ALONG DRAINAGE PIPE AND CONNECTED TO PIPE WITH TIE-WIRE 8343-04-000.
- 1 SEE WIRING INSTL-TV/DVD FOR ADDITIONAL INFORMATION.

- 23R DRAINAGE SYSTEM/HEAT-PREWIRE
- 23T DRAINAGE SYSTEM-HEATED
- 265 CODES/STANDARDS-CSA/CMVSS
- 1B1 CODES/STANDARDS USA

FOR ELECTRICAL TORQUE SPECIFICATIONS SEE DWG NO. 128783-01-000

FOR ELECTRICAL CALLOUTS SEE DWG NO. 121339-01-000

FIRST USED		15 331K/P	
DO NOT SCALE DRAWING			
TITLE: WIRING INSTL-BODY, 12V			
SHEET 7	PART NO	189833	REV
			1 12-May-2015

\* 189833 A \*