



**DANGER**

**Danger of electrical shock, burns or death.** Always remove all power sources before attempting any repair, service or diagnostic work. Power can be present from shore power, generator, inverter or battery. All power sources must be disabled and secured before performing any service.

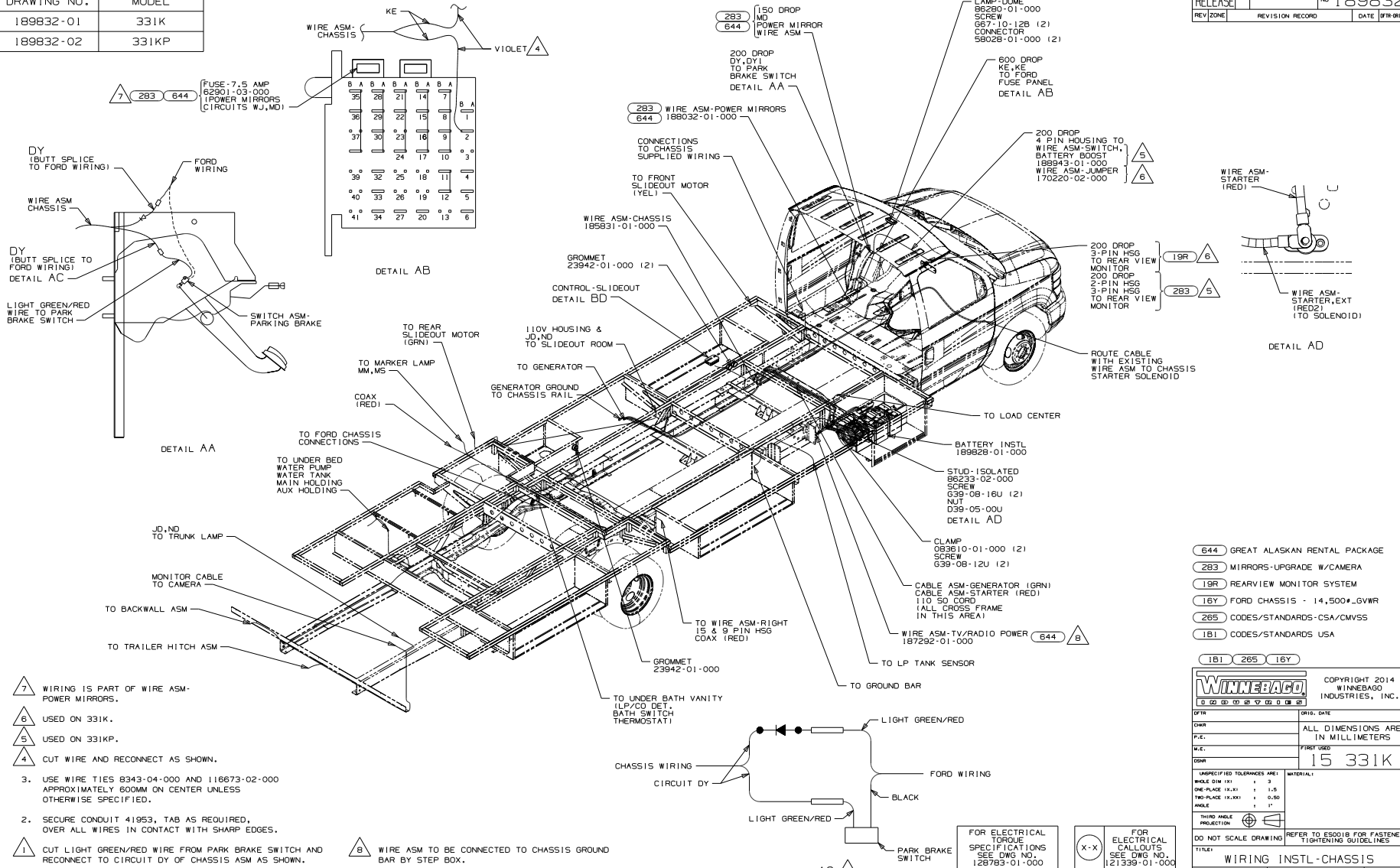


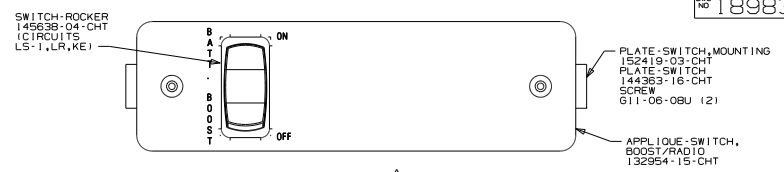
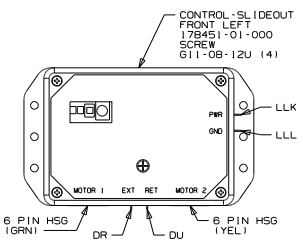
**CAUTION**

If you lack the skills, tools or equipment to perform diagnostic or repair work leave such work to an authorized Winnebago Industries dealer or other qualified shop.

DRAWING NO.	MODEL
189832-01	331K
189832-02	331KP

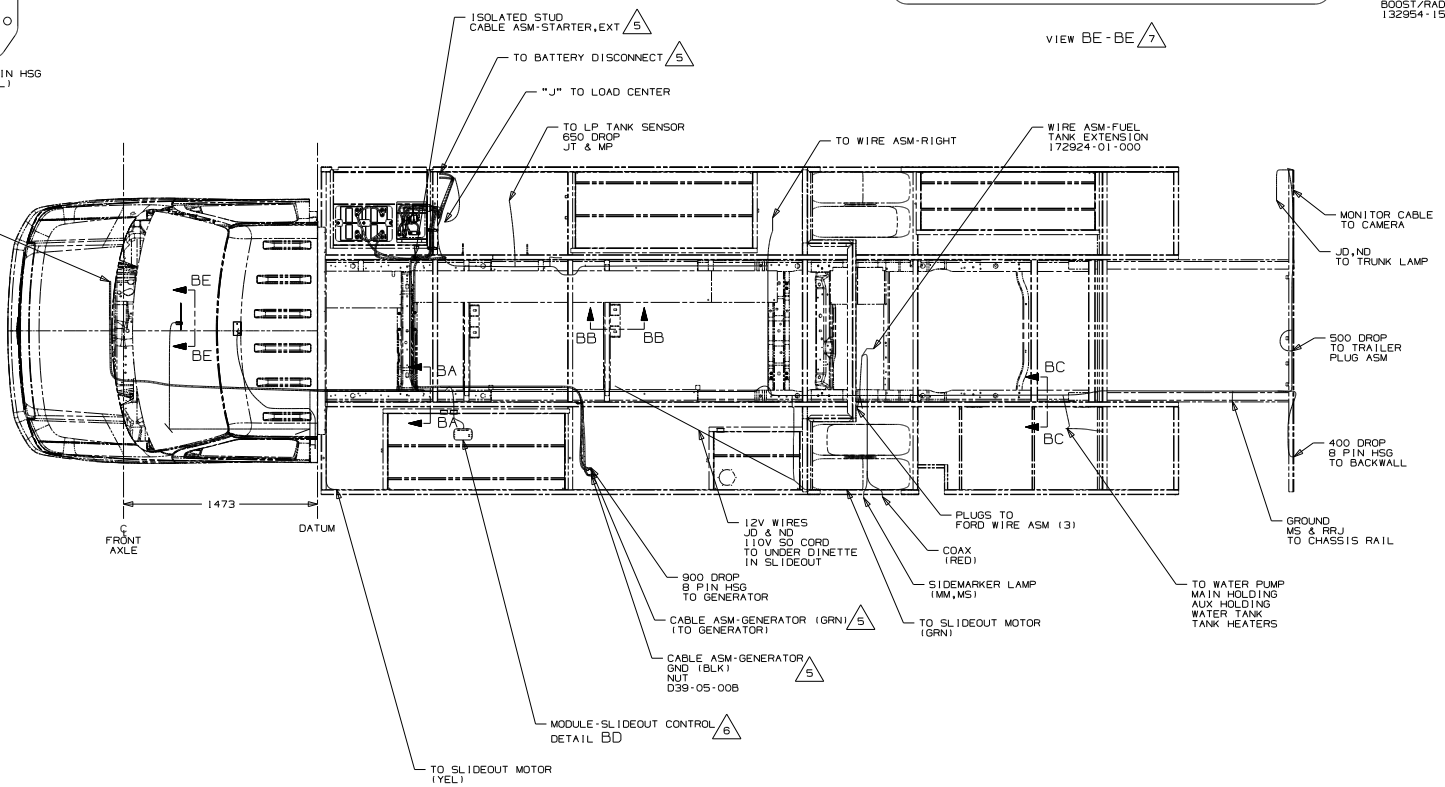
RELEASE	REVDATE	REV NO	189832
REVZONE	REVISION RECORD	DATE	07R-016



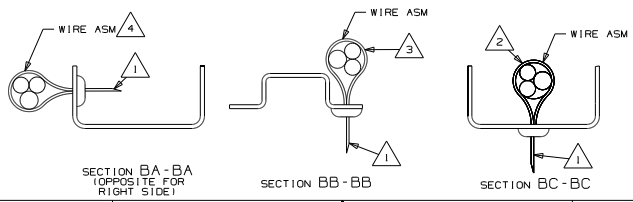


VIEW BE-BE 7

DETAIL BD



- 7 USED ON 331KP.
- 6 MODULE TO BE ATTACHED TO UNDERSIDE OF FLOOR IN STORAGE COMPARTMENT.
- 5 SEE BATTERY INSTL FOR ADDITIONAL INFORMATION.
- 4 WIRES TO BE TIED TO CROSS MEMBER USING EXISTING HOLES.
- 3 WIRES TO BE TIED TO TOP OF RAIL USING EXISTING HOLES.
- 2 WIRES TO BE TIED TO INSIDE OF RAIL USING EXISTING HOLES.
- 1 CUT OFF EXCESS END OF WIRE TIE.



FOR ELECTRICAL TORQUE SPECIFICATIONS SEE DWG NO. 128783-01-000

FOR ELECTRICAL CALLOUTS SEE DWG NO. 121339-01-000

16Y FORD CHASSIS - 14,500-LGVWR  
265 CODES/STANDARDS-CSA/CMVSS  
1B1 CODES/STANDARDS USA

16Y	265	16Y
PART NOS 15 331K		
DO NOT SCALE DRAWING		
TITLE: WIRING INSTL-CHASSIS		
SHEET 2	PART NO 189832	REV