



DANGER

Danger of electrical shock, burns or death. Always remove all power sources before attempting any repair, service or diagnostic work. Power can be present from shore power, generator, inverter or battery. All power sources must be disabled and secured before performing any service.

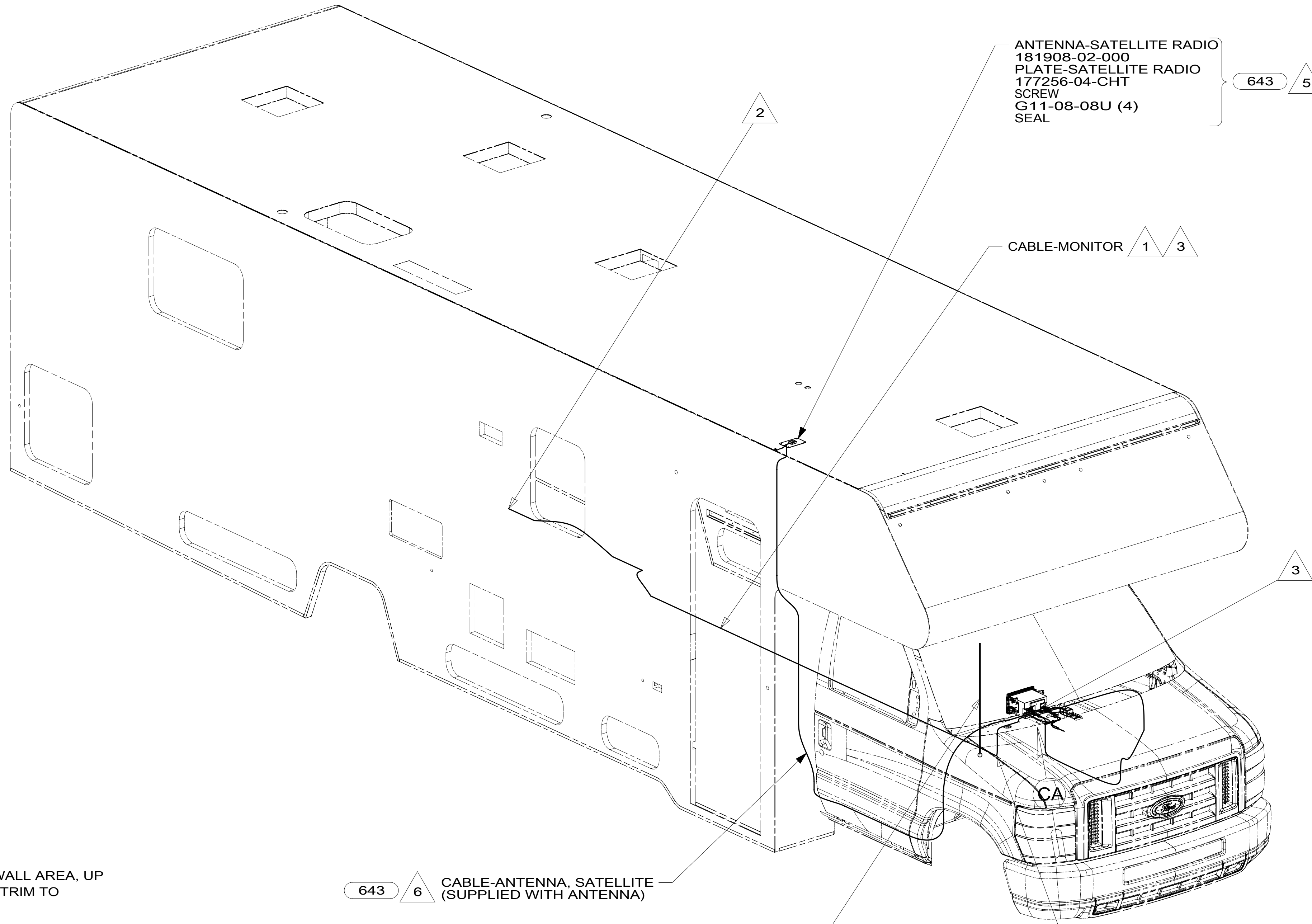
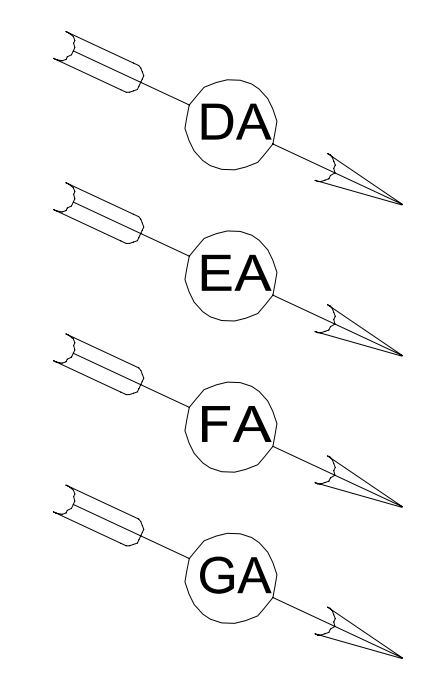


CAUTION

If you lack the skills, tools or equipment to perform diagnostic or repair work leave such work to an authorized Winnebago Industries dealer or other qualified shop.

DRAWING NO.	MODEL	SHEETS
189829-01	331K	1,2,3,4
189829-02	325B,322R	1,2,3,5
189829-03	327Q	1,2,3,7
189829-04	331H	1,2,3,6

RELEASE	REV/DATE	DWG NO	189829
REV ZONE	REVISION RECORD	DATE	DFT-ORIG



- NOTES:
- 6 ROUTE CABLE FROM RADIO TO PASSENGER'S STEPWALL AREA, UP WINGWALL, THROUGH SLEEPER BOARD ASM, UNDER TRIM TO ANTENNA PLATE ON ROOF.
 - 5 MOUNT ANTENNA AND PLATE SUCH THAT BASE IS SQUARE WITH ROOF AND DIRECTLY OVER HOLE IN ROOF. SEAL BOTH HOLE IN ROOF AND ANTENNA BASE AT SCREWS.
 - 4 SUPPLIED WITH CHASSIS. USE SHORTEST SUPPLIED ANTENNA
 - 3 ROUTE CABLE TO DASH RADIO.
 - 2 WIRING IS ROUTED DIFFERENTLY FOR EACH UNIT FROM THIS POINT REARWARD.
 - 1 REAR MONITOR CAMERA CABLE IS PART OF WIRE ASM-CHASSIS AND RUNS ALONG LEFT FRAME RAIL.

643 6 CABLE-ANTENNA, SATELLITE (SUPPLIED WITH ANTENNA)

4 ANTENNA-RADIO

FOR ELECTRICAL TORQUE SPECIFICATIONS SEE DWG NO. 128783-01-000

FOR ELECTRICAL CALLOUTS SEE DWG NO. 121339-01-000

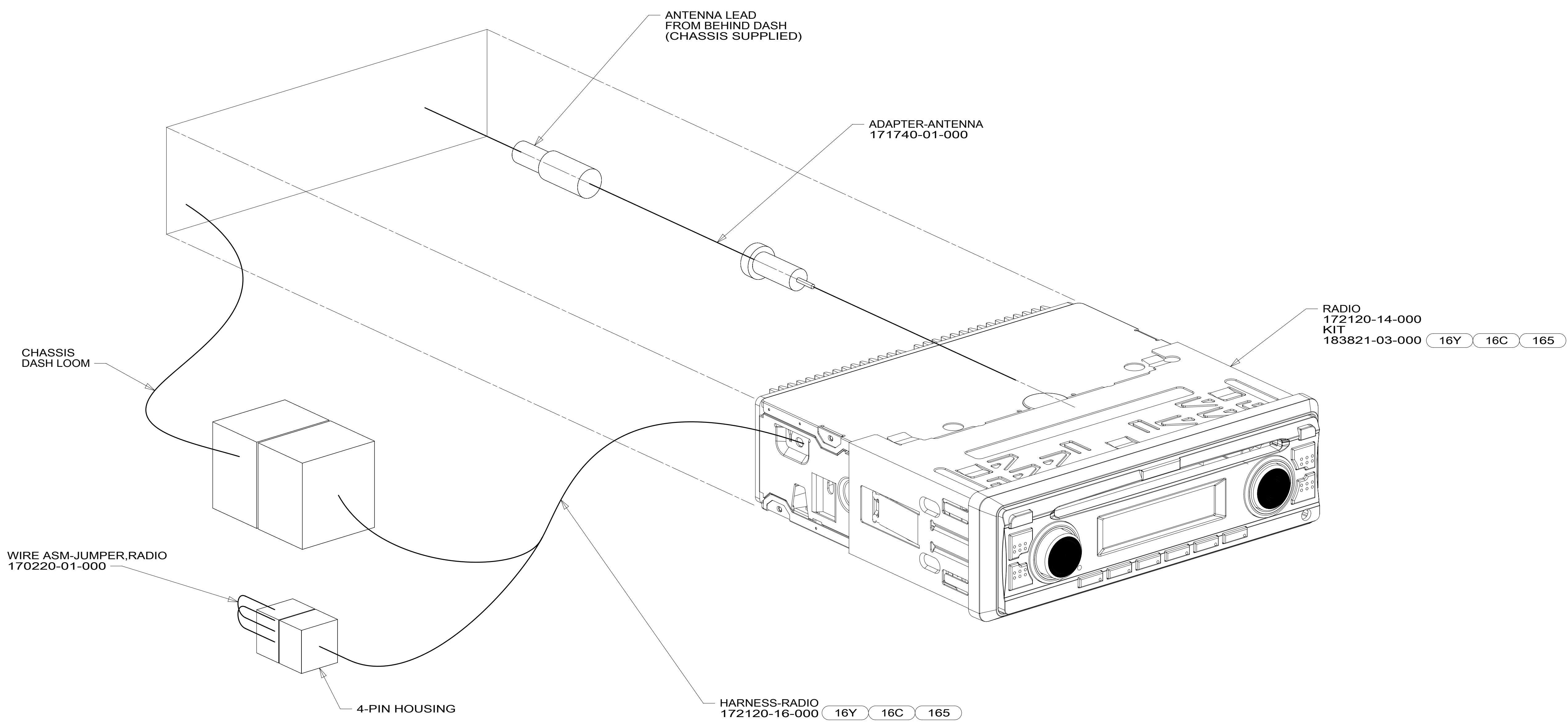
- 643 RENTAL-MILES DIXON
- 265 CODES/STANDARDS-CSA/CMVSS
- 1B1 CODES/STANDARDS USA

1B1 265

WINNEBAGO INDUSTRIES, INC. COPYRIGHT 2014

DFT-ORIG	ORIG. DATE
CHKR	ALL DIMENSIONS ARE IN MILLIMETERS
P.E.	FIRST USED
M.E.	15 300-SERIES
DSNR	MATERIAL:
UNSPECIFIED TOLERANCES ARE:	
WHOLE DIM (X)	: 3
ONE-PLACE (X.X)	: 1.5
TWO-PLACE (X.XX)	: 0.50
ANGLE	: 1°
THIRD ANGLE PROJECTION	
DO NOT SCALE DRAWING	REFER TO ES0018 FOR FASTENER TIGHTENING GUIDELINES
TITLE: RADIO/MONITOR INSTL	
SHEET 1 OF 7	PART NO 189829 REV
REF:	1 02-Feb-2015

189829



- 165 FORD-11,500#GVWR,5.4L ENGINE
- 16C FORD CHASSIS-11,500# GVWR
- 16Y FORD CHASSIS - 14,500#_GVWR
- 19V RADIO-AM/FM STEREO CD PLAYER
- 265 CODES/STANDARDS-CSA/CMVSS
- 1B1 CODES/STANDARDS USA

1B1 265 19V

15 300-SERIES

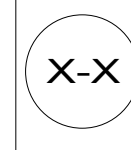
DO NOT SCALE DRAWING

TITLE: **RADIO/MONITOR INSTL**

SHEET 2 PART NO **189829** REV

FOR ELECTRICAL TORQUE SPECIFICATIONS SEE DWG NO. 128783-01-000

FOR ELECTRICAL CALLOUTS SEE DWG NO. 121339-01-000



* 189829 *

165 16C 16Y BRACKET-RADIO MOUNT 183821-01-000

RADIO-AM/FM/CD 183820-16-000 183820-17-000 643

ADAPTER-ANTENNA 171740-01-000

ANTENNA LEAD (CHASSIS SUPPLIED)

RECEIVER-SATELLITE RADIO 181908-05-000 643 3

HARNESS-RADIO 183820-18-000 16Y 16C 165

TO SATELLITE ANTENNA

2

1

RCA (YEL) TO RC IN

RCA (RED) NOT USED

HARNESS-CAMERA ADAPTER 183820-03-000

2 PIN HOUSING

CHASSIS SUPPLIED WIRING

REAR CAMERA CABLE

TO REAR CAMERA

- 643 RENTAL-MILES DIXON
- 644 GREAT ALASKAN RENTAL PACKAGE
- 165 FORD-11,500#GVWR,5.4L ENGINE
- 16C FORD CHASSIS-11,500# GVWR
- 16Y FORD CHASSIS - 14,500#_GVWR
- 075 CONVENIENCE & APPEARANCE PKG
- 19R RADIO/REARVIEW MONITOR SYS
- 265 CODES/STANDARDS-CSA/CMVSS
- 1B1 CODES/STANDARDS USA

1B1 265 19R 075 644

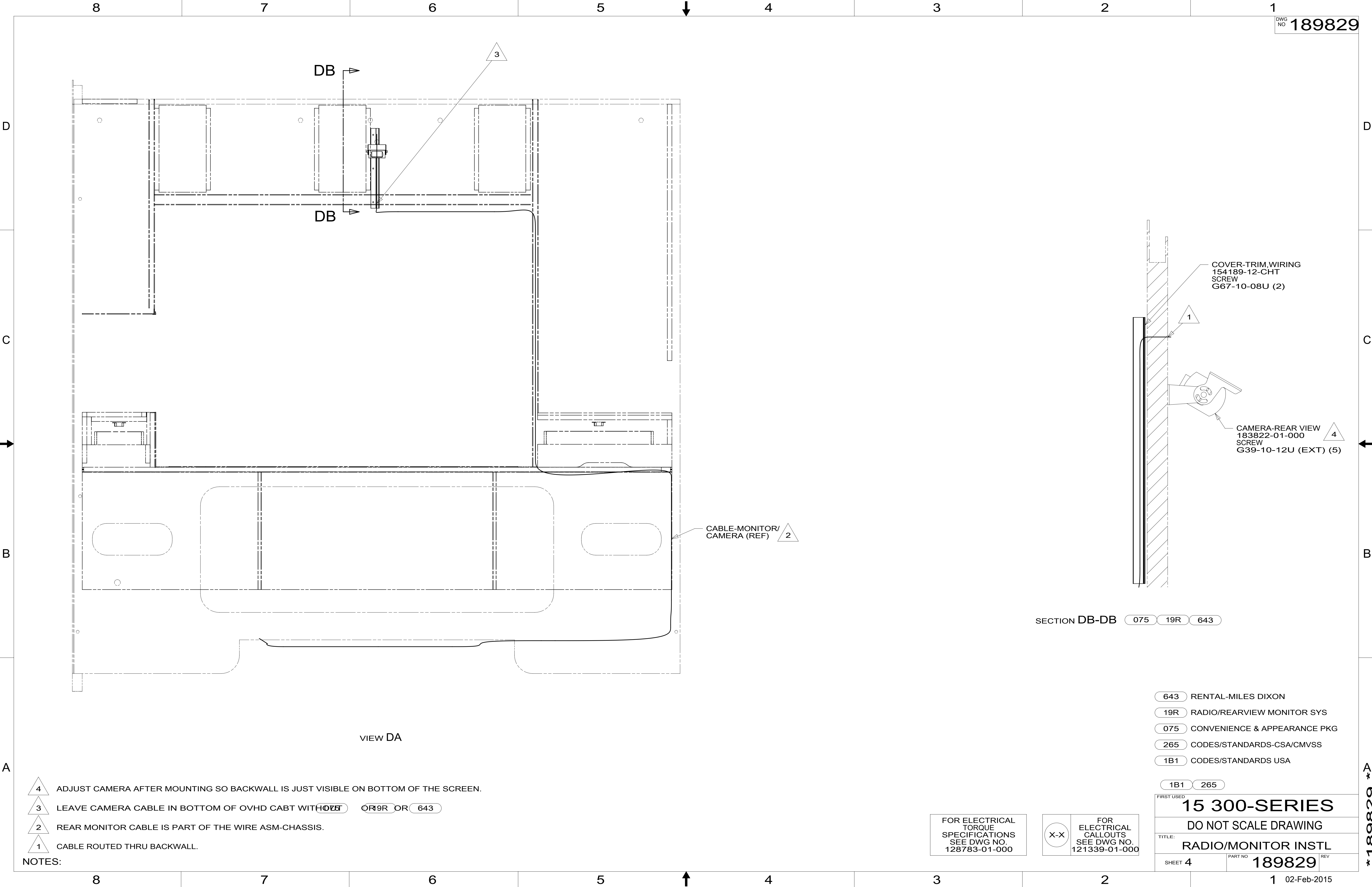
- NOTES:
- 3 WIRE TIE TO RADIO WIRING.
 - 2 USE SPACERS (4) PROVIDED WITH RADIO MOUNTING BRACKET AT 4 DASH MOUNT POINTS.
 - 1 USE SCREWS SUPPLIED W/RADIO TO ATTACH RADIO TO MOUNTING KIT, 3 EACH SIDE.

FOR ELECTRICAL TORQUE SPECIFICATIONS SEE DWG NO. 128783-01-000

FOR ELECTRICAL CALLOUTS SEE DWG NO. 121339-01-000

FIRST USED		
15 300-SERIES		
DO NOT SCALE DRAWING		
TITLE: RADIO/MONITOR INSTL		
SHEET 3	PART NO 189829	REV
1 02-Feb-2015		

189829



DB

DB

3

CABLE-MONITOR/
CAMERA (REF) 2

COVER-TRIM, WIRING
154189-12-CHT
SCREW
G67-10-08U (2)

1

CAMERA-REAR VIEW
183822-01-000
SCREW
G39-10-12U (EXT) (5)

4

SECTION DB-DB 075 19R 643

VIEW DA

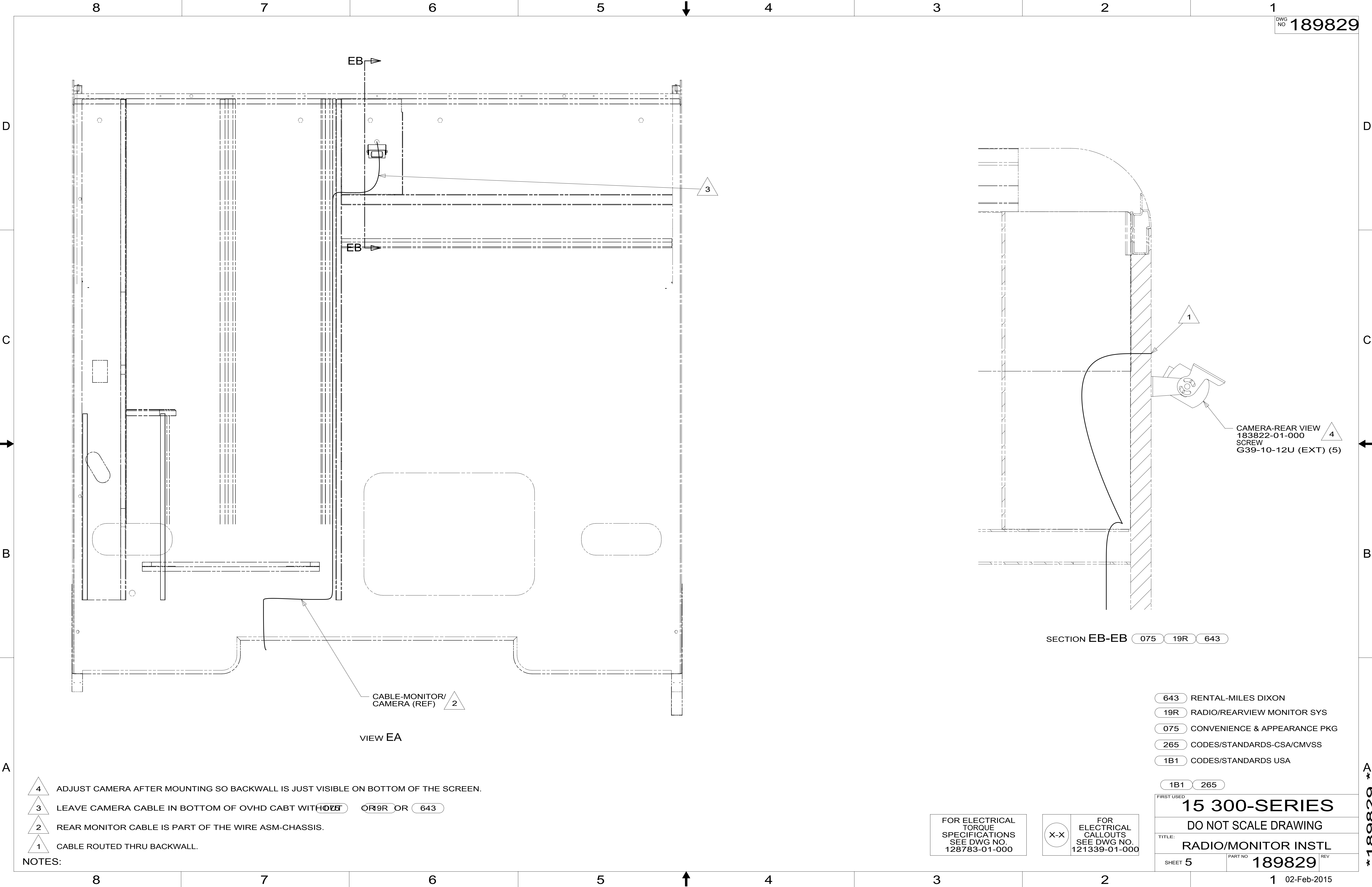
- NOTES:
- 4 ADJUST CAMERA AFTER MOUNTING SO BACKWALL IS JUST VISIBLE ON BOTTOM OF THE SCREEN.
 - 3 LEAVE CAMERA CABLE IN BOTTOM OF OVHD CABT WITH **075** **19R** OR **643**
 - 2 REAR MONITOR CABLE IS PART OF THE WIRE ASM-CHASSIS.
 - 1 CABLE ROUTED THRU BACKWALL.

- 643** RENTAL-MILES DIXON
- 19R** RADIO/REARVIEW MONITOR SYS
- 075** CONVENIENCE & APPEARANCE PKG
- 265** CODES/STANDARDS-CSA/CMVSS
- 1B1** CODES/STANDARDS USA

FIRST USED	
15 300-SERIES	
DO NOT SCALE DRAWING	
TITLE: RADIO/MONITOR INSTL	
SHEET 4	PART NO. 189829 REV

FOR ELECTRICAL
TORQUE
SPECIFICATIONS
SEE DWG NO.
128783-01-000

X-X
FOR
ELECTRICAL
CALLOUTS
SEE DWG NO.
121339-01-000



- NOTES:
- 4 ADJUST CAMERA AFTER MOUNTING SO BACKWALL IS JUST VISIBLE ON BOTTOM OF THE SCREEN.
 - 3 LEAVE CAMERA CABLE IN BOTTOM OF OVHD CABT WITH **075** OR **19R** OR **643**
 - 2 REAR MONITOR CABLE IS PART OF THE WIRE ASM-CHASSIS.
 - 1 CABLE ROUTED THRU BACKWALL.

CABLE-MONITOR/
CAMERA (REF) 2

VIEW EA

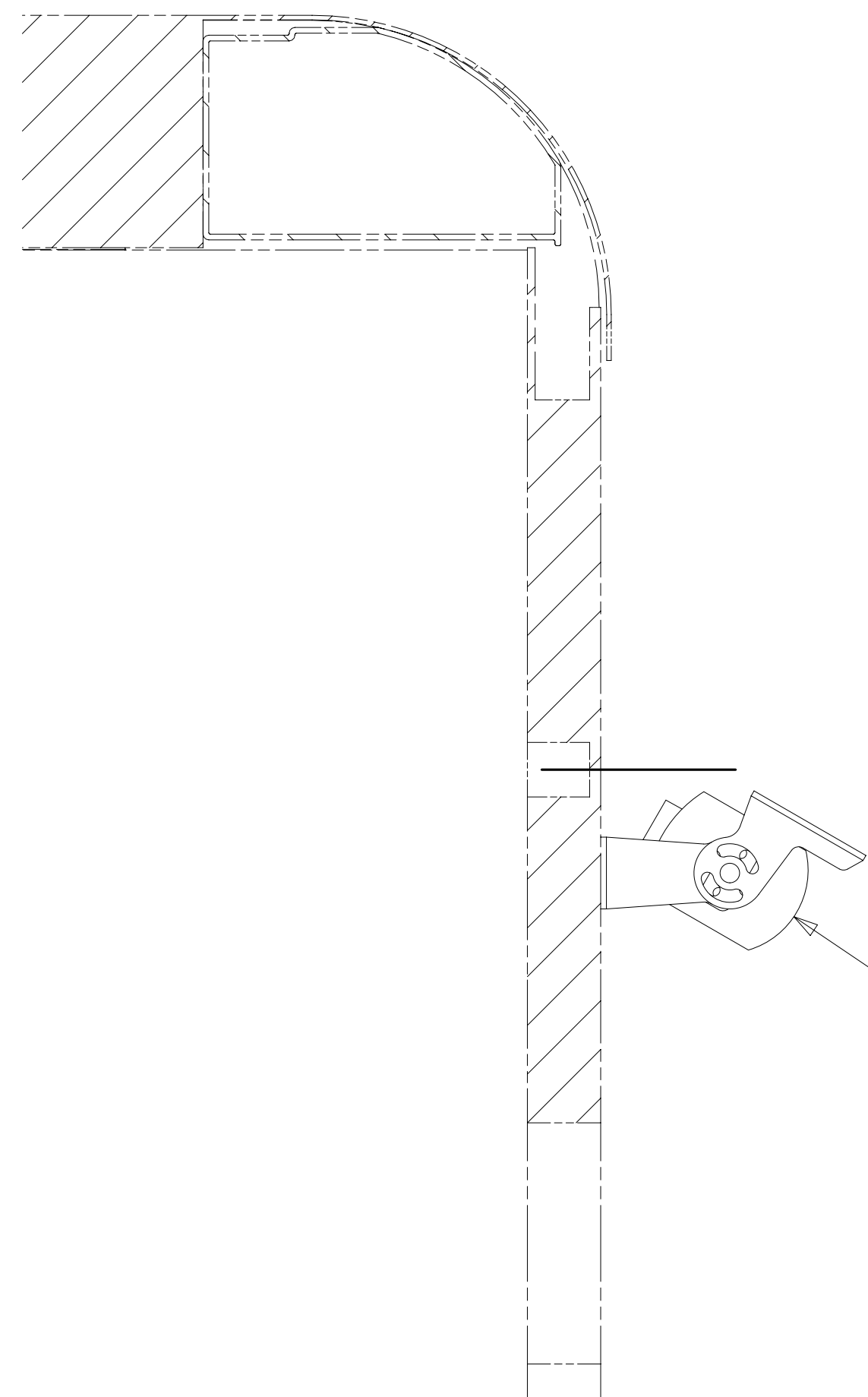
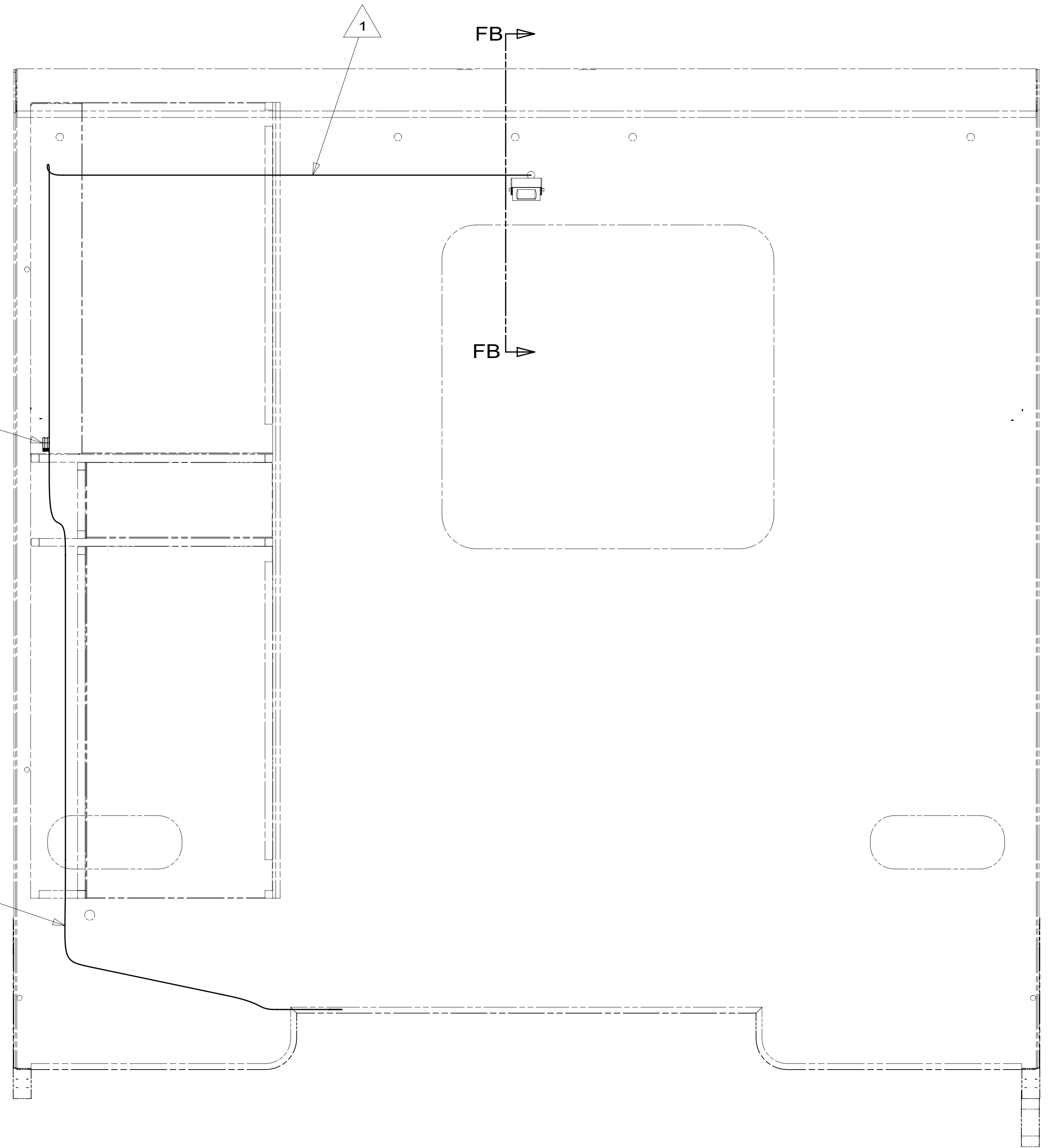
SECTION EB-EB 075 19R 643

- 643 RENTAL-MILES DIXON
- 19R RADIO/REARVIEW MONITOR SYS
- 075 CONVENIENCE & APPEARANCE PKG
- 265 CODES/STANDARDS-CSA/CMVSS
- 1B1 CODES/STANDARDS USA

FIRST USED	
15 300-SERIES	
DO NOT SCALE DRAWING	
TITLE: RADIO/MONITOR INSTL	
SHEET 5	PART NO 189829 REV

FOR ELECTRICAL
TORQUE
SPECIFICATIONS
SEE DWG NO.
128783-01-000

X-X
FOR
ELECTRICAL
CALLOUTS
SEE DWG NO.
121339-01-000



SECTION FB-FB 075 19R

VIEW FA

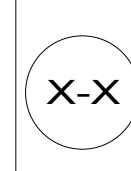
- NOTES:
- 4 ADJUST CAMERA AFTER MOUNTING SO BACKWALL IS JUST VISIBLE ON BOTTOM OF THE SCREEN.
 - 3 REAR MONITOR CABLE IS PART OF THE WIRE ASM-CHASSIS.
 - 2 EXCESS CABLE TO BE COILED BEHIND CORNER BLOCKOUT PANEL AND CLAMPED TO CABINET STICK.
 - 1 CABLE TO BE PULLED THROUGH ROUTED PATH FROM CORNER TO CAMERA. ONCE CONNECTED TO CAMERA, PULL CABLE BACK THROUGH ROUTED PATH ENOUGH TO ALLOW CABLE TO FIT INTO SLOT.

- 19R RADIO/REARVIEW MONITOR SYS
- 075 CONVENIENCE & APPEARANCE PKG
- 265 CODES/STANDARDS-CSA/CMVSS
- 1B1 CODES/STANDARDS USA

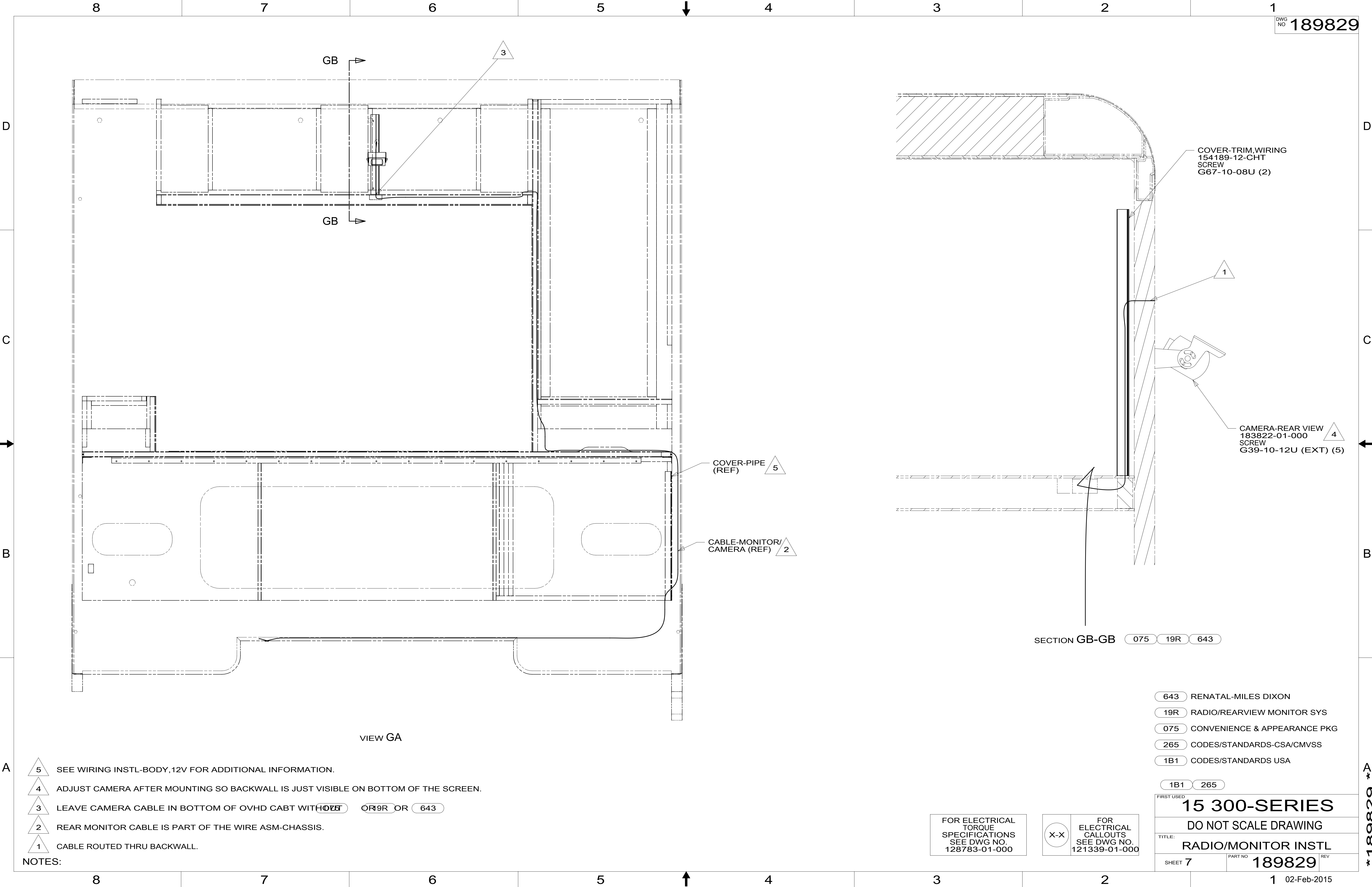
FIRST USED	
15 300-SERIES	
DO NOT SCALE DRAWING	
TITLE: RADIO/MONITOR INSTL	
SHEET 6	PART NO. 189829 REV

FOR ELECTRICAL TORQUE SPECIFICATIONS SEE DWG NO. 128783-01-000

FOR ELECTRICAL CALLOUTS SEE DWG NO. 121339-01-000



189829



GB

GB

3

COVER-PIPE (REF) 5

CABLE-MONITOR/CAMERA (REF) 2

COVER-TRIM, WIRING
154189-12-CHT
SCREW
G67-10-08U (2)

CAMERA-REAR VIEW
183822-01-000
SCREW
G39-10-12U (EXT) (5)

SECTION GB-GB 075 19R 643

VIEW GA

- NOTES:
- 5 SEE WIRING INSTL-BODY, 12V FOR ADDITIONAL INFORMATION.
 - 4 ADJUST CAMERA AFTER MOUNTING SO BACKWALL IS JUST VISIBLE ON BOTTOM OF THE SCREEN.
 - 3 LEAVE CAMERA CABLE IN BOTTOM OF OVHD CABT WITH **075** **19R** OR **643**
 - 2 REAR MONITOR CABLE IS PART OF THE WIRE ASM-CHASSIS.
 - 1 CABLE ROUTED THRU BACKWALL.

- 643 RENATAL-MILES DIXON
- 19R RADIO/REARVIEW MONITOR SYS
- 075 CONVENIENCE & APPEARANCE PKG
- 265 CODES/STANDARDS-CSA/CMVSS
- 1B1 CODES/STANDARDS USA

FIRST USED	
15 300-SERIES	
DO NOT SCALE DRAWING	
TITLE: RADIO/MONITOR INSTL	
SHEET 7	PART NO 189829 REV

FOR ELECTRICAL TORQUE SPECIFICATIONS SEE DWG NO. 128783-01-000

FOR ELECTRICAL CALLOUTS SEE DWG NO. 121339-01-000

X-X

* 189829 *