



DANGER

Danger of electrical shock, burns or death. Always remove all power sources before attempting any repair, service or diagnostic work. Power can be present from shore power, generator, inverter or battery. All power sources must be disabled and secured before performing any service.



CAUTION

If you lack the skills, tools or equipment to perform diagnostic or repair work leave such work to an authorized Winnebago Industries dealer or other qualified shop.

DRAWING NO.	MODEL	SHEET
189828-01	331K/P	1,2,7
189828-02	325B	1,3,7
189828-03	331H	1,4,7
189828-04	322R	1,5,7
189828-05	327Q/P	1,6,7

RELEASE	REV/DATE	DWG NO	189828
REV ZONE	A	REVISION RECORD	DATE DFT-ORIG

	331K/P	325B	331H/P	322R	327Q/P
CABLE ASM-STARTER (RED)	141415-32-045	141415-32-053	141415-32-069	141415-32-045	141415-32-045
CABLE ASM-COACH BATTERY (YEL)	141415-52-014	141415-52-016	141415-52-015	141415-52-014	141415-52-014
CABLE ASM-COACH BATTERY GND (BLK)	133566-12-008	133566-12-008	133566-12-008	133566-12-008	133566-12-008
CABLE ASM-GENERATOR (GRN)	141415-42-042	141415-42-052	141415-42-043	141415-42-033	141415-42-072
CABLE ASM-GENERATOR GND (BLK)	133566-12-008	133566-12-008	133566-12-008	133566-12-008	133566-12-008
CABLE ASM-BATTERY DISCONNECT,BATTERY (BLU)	141416-27-012	141415-21-025	141416-27-019	141416-27-011	141416-27-012
CABLE ASM-BATTERY DISCONNECT,COMMON (PUR)	141416-17-012	141415-11-025	141416-17-019	141416-17-011	141416-17-012
CABLE ASM-FUSE (ORG)	141415-64-002	141415-64-002	141415-64-002	141415-64-002	141415-64-002
CABLE ASM-BREAKER (BLK)	140228-01-002	140228-01-002	140228-01-002	140228-01-002	140228-01-002
CABLE ASM-STARTER,EXT (RED 2)	141415-32-009	141415-32-018	141415-32-007	141415-32-005	141415-32-006

- 265 CODES/STANDARDS-CSA/CMVSS
- 1B1 CODES/STANDARDS USA

- 1B1 265

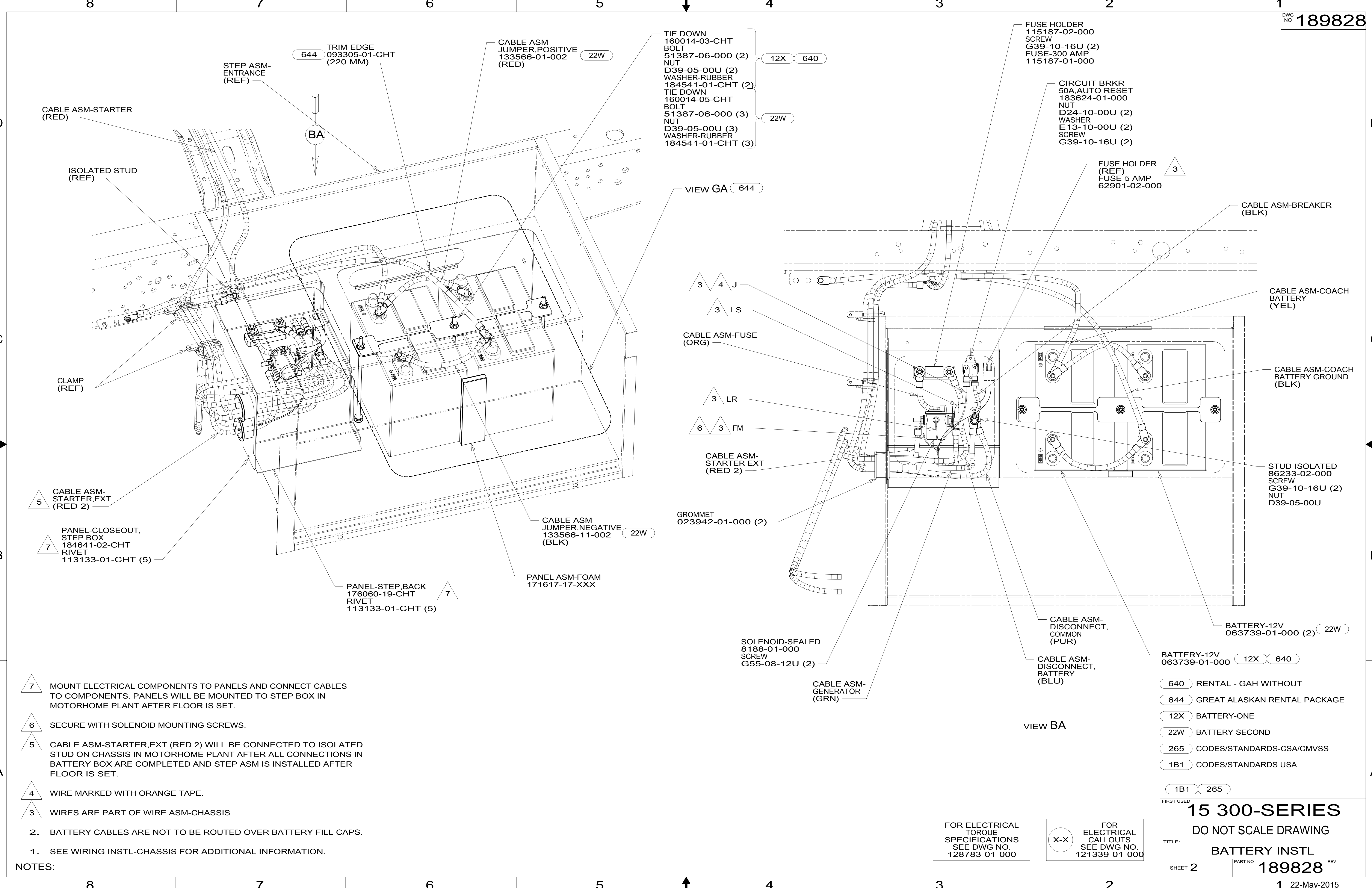


DFT-ORIG	ORIG. DATE
CHKR	ALL DIMENSIONS ARE IN MILLIMETERS
P.E.	
M.E.	FIRST USED
DSNR	15 300-SERIES
UNSPECIFIED TOLERANCES ARE:	
WHOLE DIM (X)	MATERIAL:
ONE-PLACE (X.X)	
TWO-PLACE (X.XX)	
ANGLE	
THIRD ANGLE PROJECTION	
DO NOT SCALE DRAWING	REFER TO ES0018 FOR FASTENER TIGHTENING GUIDELINES
TITLE: BATTERY INSTL	
SHEET 1 OF 7	PART NO 189828 REV

FOR ELECTRICAL TORQUE SPECIFICATIONS SEE DWG NO. 128783-01-000

FOR ELECTRICAL CALLOUTS SEE DWG NO. 121339-01-000

189828



- NOTES:**
- 7 MOUNT ELECTRICAL COMPONENTS TO PANELS AND CONNECT CABLES TO COMPONENTS. PANELS WILL BE MOUNTED TO STEP BOX IN MOTORHOME PLANT AFTER FLOOR IS SET.
 - 6 SECURE WITH SOLENOID MOUNTING SCREWS.
 - 5 CABLE ASM-STARTER, EXT (RED 2) WILL BE CONNECTED TO ISOLATED STUD ON CHASSIS IN MOTORHOME PLANT AFTER ALL CONNECTIONS IN BATTERY BOX ARE COMPLETED AND STEP ASM IS INSTALLED AFTER FLOOR IS SET.
 - 4 WIRE MARKED WITH ORANGE TAPE.
 - 3 WIRES ARE PART OF WIRE ASM-CHASSIS
2. BATTERY CABLES ARE NOT TO BE ROUTED OVER BATTERY FILL CAPS.
1. SEE WIRING INSTL-CHASSIS FOR ADDITIONAL INFORMATION.

- 640 RENTAL - GAH WITHOUT
- 644 GREAT ALASKAN RENTAL PACKAGE
- 12X BATTERY-ONE
- 22W BATTERY-SECOND
- 265 CODES/STANDARDS-CSA/CMVSS
- 1B1 CODES/STANDARDS USA

FOR ELECTRICAL TORQUE SPECIFICATIONS SEE DWG NO. 128783-01-000

FOR ELECTRICAL CALLOUTS SEE DWG NO. 121339-01-000

FIRST USED

15 300-SERIES

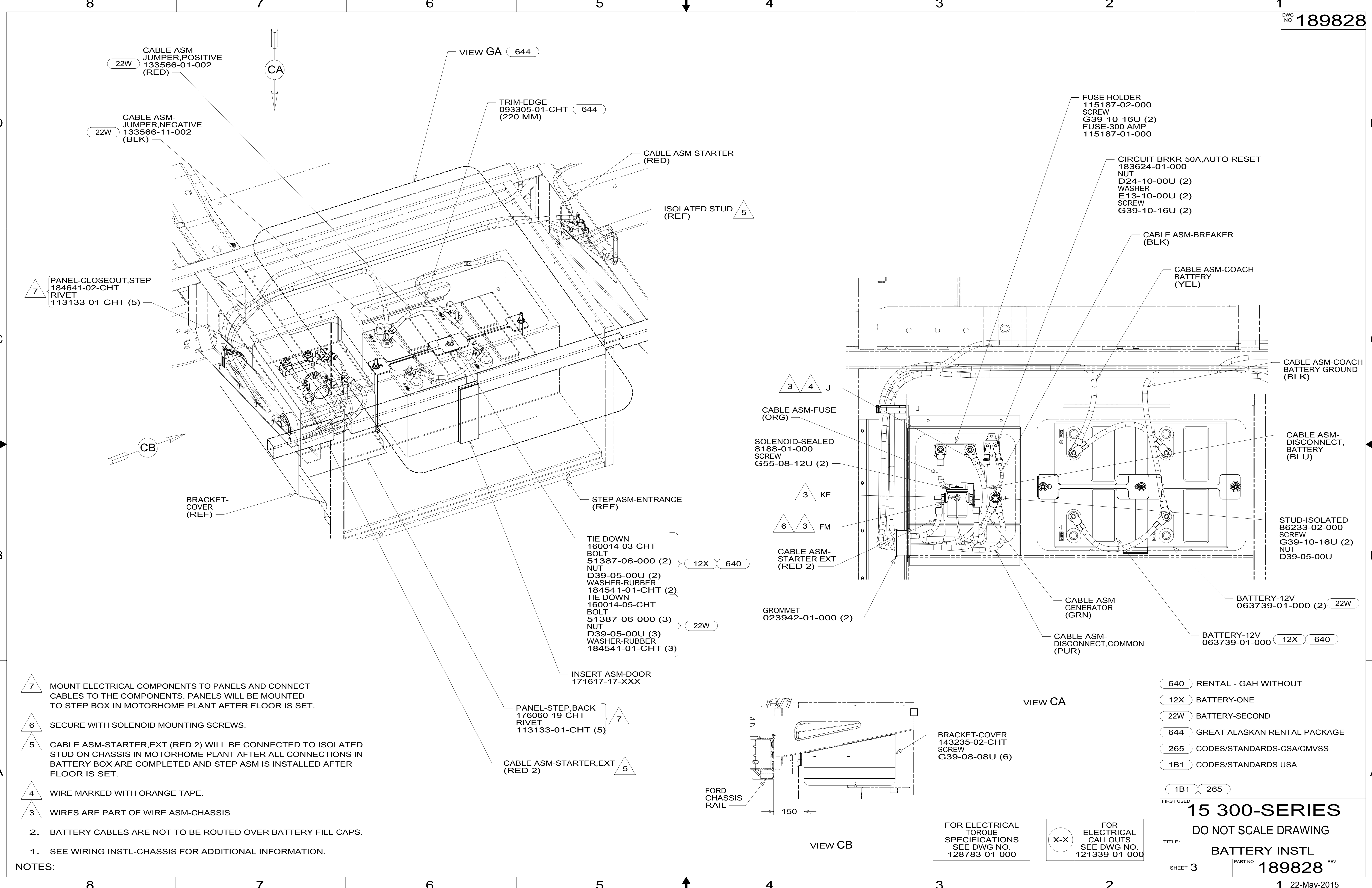
DO NOT SCALE DRAWING

TITLE: **BATTERY INSTL**

SHEET 2 PART NO **189828** REV

1 22-May-2015

* 189828 A *



7 PANEL-CLOSEOUT,STEP
184641-02-CHT
RIVET
113133-01-CHT (5)

22W CABLE ASM-
JUMPER,POSITIVE
133566-01-002
(RED)

22W CABLE ASM-
JUMPER,NEGATIVE
133566-11-002
(BLK)

VIEW GA 644

TRIM-EDGE
093305-01-CHT 644
(220 MM)

CABLE ASM-STARTER
(RED)

ISOLATED STUD
(REF) 5

FUSE HOLDER
115187-02-000
SCREW
G39-10-16U (2)
FUSE-300 AMP
115187-01-000

CIRCUIT BRKR-50A,AUTO RESET
183624-01-000
NUT
D24-10-00U (2)
WASHER
E13-10-00U (2)
SCREW
G39-10-16U (2)

CABLE ASM-BREAKER
(BLK)

CABLE ASM-COACH
BATTERY
(YEL)

CABLE ASM-COACH
BATTERY GROUND
(BLK)

CABLE ASM-
DISCONNECT,
BATTERY
(BLU)

STUD-ISOLATED
86233-02-000
SCREW
G39-10-16U (2)
NUT
D39-05-00U

CABLE ASM-FUSE
(ORG)

SOLENOID-SEALED
8188-01-000
SCREW
G55-08-12U (2)

3 KE

6 3 FM

CABLE ASM-
STARTER EXT
(RED 2)

GROMMET
023942-01-000 (2)

CABLE ASM-
GENERATOR
(GRN)

CABLE ASM-
DISCONNECT,COMMON
(PUR)

BATTERY-12V
063739-01-000 (2) 22W

BATTERY-12V
063739-01-000 12X 640

STEP ASM-ENTRANCE
(REF)

TIE DOWN
160014-03-CHT
BOLT
51387-06-000 (2)
NUT
D39-05-00U (2)
WASHER-RUBBER
184541-01-CHT (2)
TIE DOWN
160014-05-CHT
BOLT
51387-06-000 (3)
NUT
D39-05-00U (3)
WASHER-RUBBER
184541-01-CHT (3)

INSERT ASM-DOOR
171617-17-XXX

PANEL-STEP,BACK
176060-19-CHT
RIVET
113133-01-CHT (5)

CABLE ASM-STARTER,EXT
(RED 2) 5

BRACKET-
COVER
(REF)

CB

7 MOUNT ELECTRICAL COMPONENTS TO PANELS AND CONNECT CABLES TO THE COMPONENTS. PANELS WILL BE MOUNTED TO STEP BOX IN MOTORHOME PLANT AFTER FLOOR IS SET.

6 SECURE WITH SOLENOID MOUNTING SCREWS.

5 CABLE ASM-STARTER,EXT (RED 2) WILL BE CONNECTED TO ISOLATED STUD ON CHASSIS IN MOTORHOME PLANT AFTER ALL CONNECTIONS IN BATTERY BOX ARE COMPLETED AND STEP ASM IS INSTALLED AFTER FLOOR IS SET.

4 WIRE MARKED WITH ORANGE TAPE.

3 WIRES ARE PART OF WIRE ASM-CHASSIS

2. BATTERY CABLES ARE NOT TO BE ROUTED OVER BATTERY FILL CAPS.

1. SEE WIRING INSTL-CHASSIS FOR ADDITIONAL INFORMATION.

NOTES:

- 640 RENTAL - GAH WITHOUT
- 12X BATTERY-ONE
- 22W BATTERY-SECOND
- 644 GREAT ALASKAN RENTAL PACKAGE
- 265 CODES/STANDARDS-CSA/CMVSS
- 1B1 CODES/STANDARDS USA

1B1 265

FIRST USED

15 300-SERIES

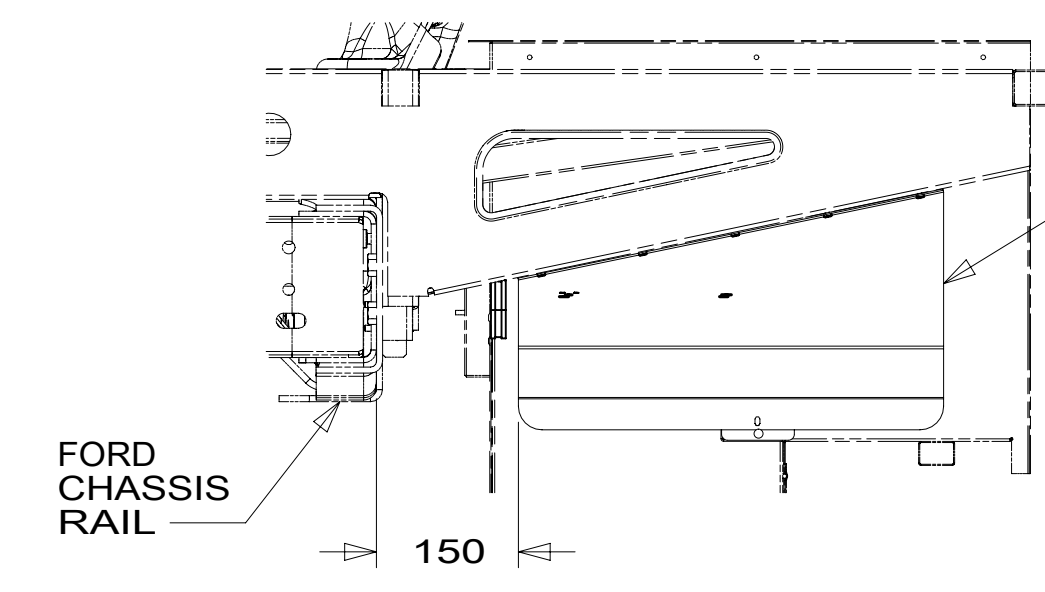
DO NOT SCALE DRAWING

TITLE: **BATTERY INSTL**

SHEET 3 PART NO **189828** REV

FOR ELECTRICAL
TORQUE
SPECIFICATIONS
SEE DWG NO.
128783-01-000

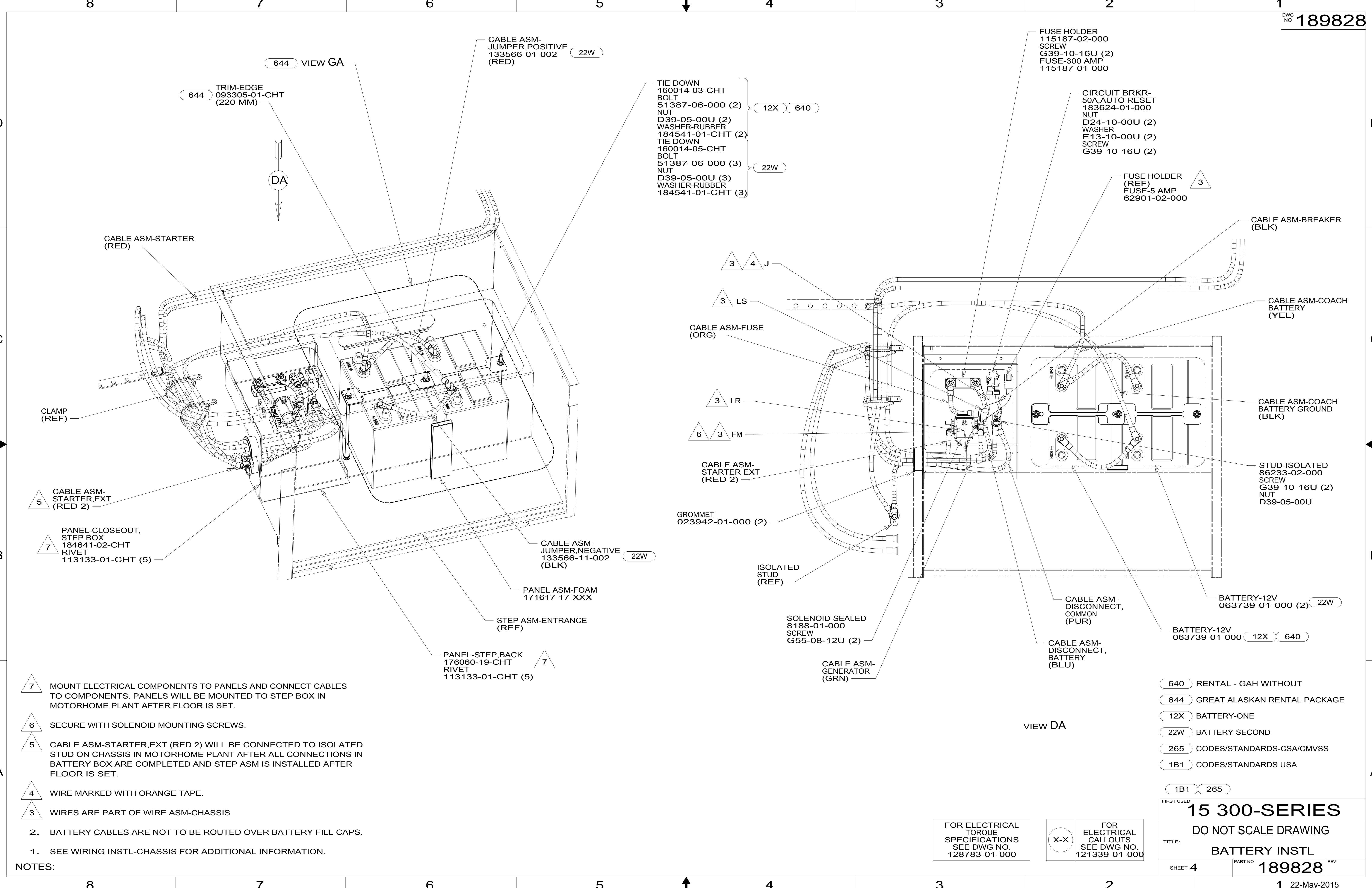
X-X
FOR
ELECTRICAL
CALLOUTS
SEE DWG NO.
121339-01-000



VIEW CB

VIEW CA

* 189828 *



CABLE ASM-JUMPER, POSITIVE
133566-01-002 (RED) 22W

644 TRIM-EDGE
093305-01-CHT (220 MM)

DA

TIE DOWN
160014-03-CHT BOLT
51387-06-000 (2) 12X 640
NUT
D39-05-00U (2)
WASHER-RUBBER
184541-01-CHT (2)
TIE DOWN
160014-05-CHT BOLT
51387-06-000 (3) 22W
NUT
D39-05-00U (3)
WASHER-RUBBER
184541-01-CHT (3)

FUSE HOLDER
115187-02-000
SCREW
G39-10-16U (2)
FUSE-300 AMP
115187-01-000

CIRCUIT BRKR-
50A, AUTO RESET
183624-01-000
NUT
D24-10-00U (2)
WASHER
E13-10-00U (2)
SCREW
G39-10-16U (2)

FUSE HOLDER (REF)
FUSE-5 AMP
62901-02-000 3

CABLE ASM-STARTER (RED)

CABLE ASM-BREAKER (BLK)

CLAMP (REF)

CABLE ASM-COACH BATTERY (YEL)

5 CABLE ASM-STARTER, EXT (RED 2)

CABLE ASM-COACH BATTERY GROUND (BLK)

7 PANEL-CLOSEOUT, STEP BOX
184641-02-CHT RIVET
113133-01-CHT (5)

3 4 J
3 LS
3 LR
6 3 FM

3 CABLE ASM-FUSE (ORG)

3 CABLE ASM-STARTER EXT (RED 2)

STUD-ISOLATED
86233-02-000 SCREW
G39-10-16U (2)
NUT
D39-05-00U

22W CABLE ASM-JUMPER, NEGATIVE
133566-11-002 (BLK)

2 GROMMET
023942-01-000 (2)

ISOLATED STUD (REF)

SOLENOID-SEALED
8188-01-000 SCREW
G55-08-12U (2)

CABLE ASM-DISCONNECT, COMMON (PUR)

22W BATTERY-12V
063739-01-000 (2)

PANEL ASM-FOAM
171617-17-XXX

STEP ASM-ENTRANCE (REF)

7 PANEL-STEP, BACK
176060-19-CHT RIVET
113133-01-CHT (5)

CABLE ASM-GENERATOR (GRN)

CABLE ASM-DISCONNECT, BATTERY (BLU)

12X 640 BATTERY-12V
063739-01-000

7 MOUNT ELECTRICAL COMPONENTS TO PANELS AND CONNECT CABLES TO COMPONENTS. PANELS WILL BE MOUNTED TO STEP BOX IN MOTORHOME PLANT AFTER FLOOR IS SET.

6 SECURE WITH SOLENOID MOUNTING SCREWS.

5 CABLE ASM-STARTER, EXT (RED 2) WILL BE CONNECTED TO ISOLATED STUD ON CHASSIS IN MOTORHOME PLANT AFTER ALL CONNECTIONS IN BATTERY BOX ARE COMPLETED AND STEP ASM IS INSTALLED AFTER FLOOR IS SET.

4 WIRE MARKED WITH ORANGE TAPE.

3 WIRES ARE PART OF WIRE ASM-CHASSIS

2. BATTERY CABLES ARE NOT TO BE ROUTED OVER BATTERY FILL CAPS.

1. SEE WIRING INSTL-CHASSIS FOR ADDITIONAL INFORMATION.

NOTES:

- 640 RENTAL - GAH WITHOUT
- 644 GREAT ALASKAN RENTAL PACKAGE
- 12X BATTERY-ONE
- 22W BATTERY-SECOND
- 265 CODES/STANDARDS-CSA/CMVSS
- 1B1 CODES/STANDARDS USA

1B1 265

FIRST USED
15 300-SERIES

DO NOT SCALE DRAWING

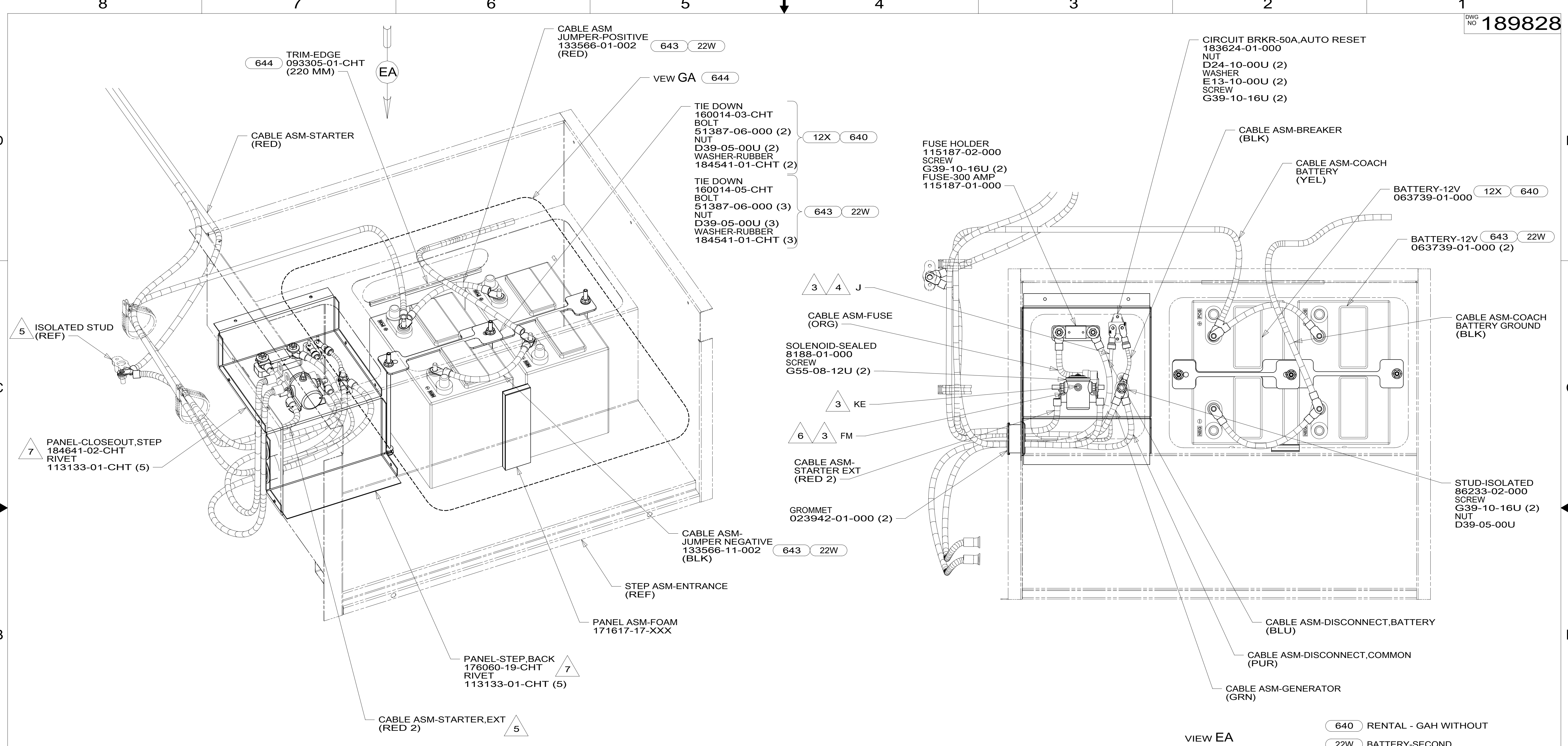
TITLE: **BATTERY INSTL**

SHEET 4 PART NO **189828** REV

FOR ELECTRICAL TORQUE SPECIFICATIONS SEE DWG NO. 128783-01-000

X-X FOR ELECTRICAL CALLOUTS SEE DWG NO. 121339-01-000

* 189828 A *



- NOTES:**
- 7 MOUNT ELECTRICAL COMPONENTS TO PANELS AND CONNECT CABLES TO THE COMPONENTS. PANELS WILL BE MOUNTED TO STEP BOX IN MOTORHOME PLANT AFTER FLOOR IS SET.
 - 6 SECURE WITH SOLENOID MOUNTING SCREWS.
 - 5 CABLE ASM-STARTER,EXT (RED 2) WILL BE CONNECTED TO ISOLATED STUD ON CHASSIS IN MOTORHOME PLANT AFTER ALL CONNECTIONS IN BATTERY BOX ARE COMPLETED AND STEP ASM IS INSTALLED AFTER FLOOR IS SET.
 - 4 WIRE MARKED WITH ORANGE TAPE.
 - 3 WIRES ARE PART OF WIRE ASM-CHASSIS
 - 2. BATTERY CABLES ARE NOT TO BE ROUTED OVER BATTERY FILL CAPS.
 - 1. SEE WIRING INSTL-CHASSIS FOR ADDITIONAL INFORMATION.

VIEW EA

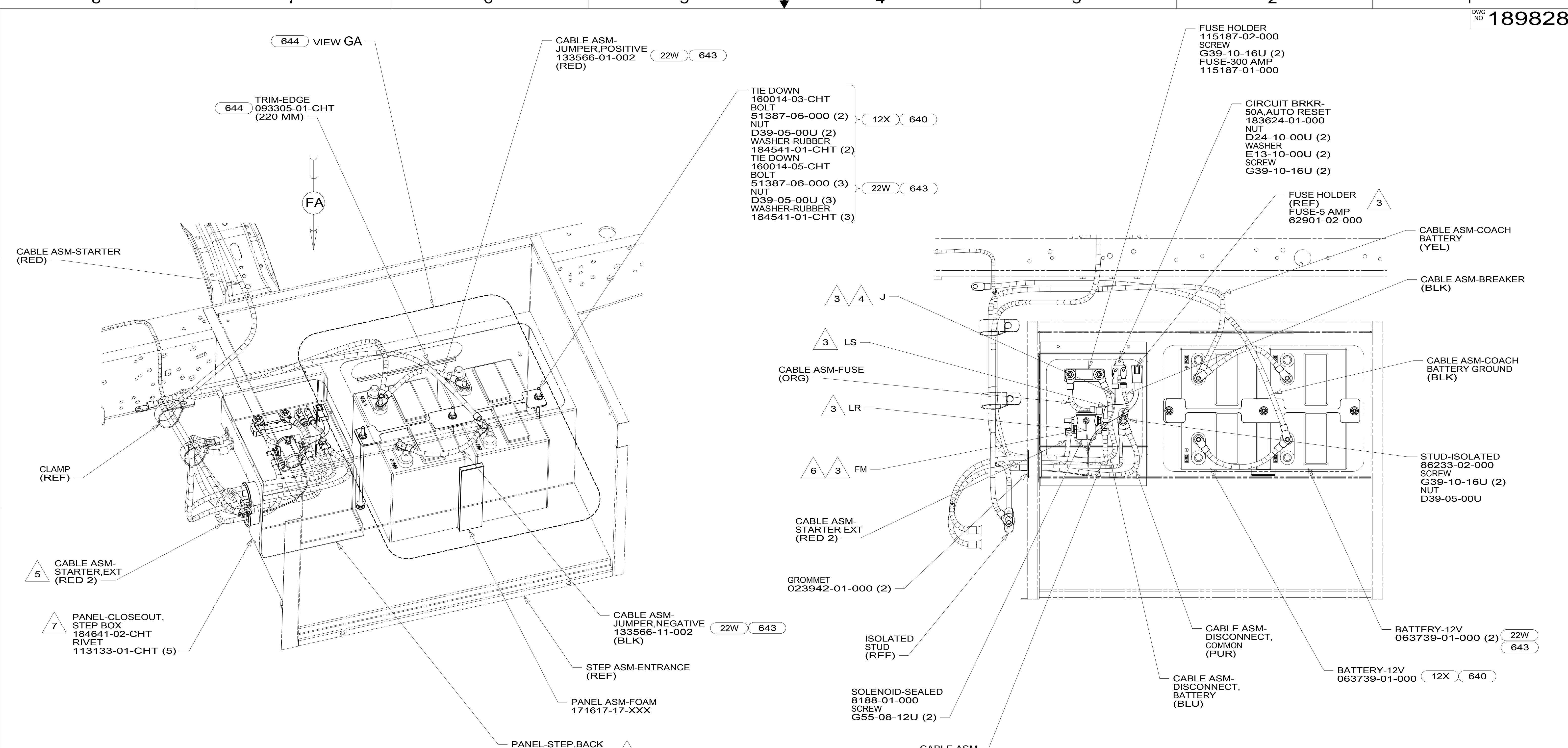
- (640) RENTAL - GAH WITHOUT
- (22W) BATTERY-SECOND
- (643) RENTAL - MILES DIXON
- (644) GREAT ALASKAN RENTAL PACKAGE
- (12X) BATTERY-ONE
- (165) FORD-11,500# GVWR,5.4 ENGINE
- (16C) FORD CHASSIS-11,500#GVWR
- (265) CODES/STANDARDS-CSA/CMVSS
- (1B1) CODES/STANDARDS USA

FIRST USED	
15 300-SERIES	
DO NOT SCALE DRAWING	
TITLE: BATTERY INSTL	
SHEET 5	PART NO. 189828 REV
1 22-May-2015	

FOR ELECTRICAL TORQUE SPECIFICATIONS SEE DWG NO. 128783-01-000

FOR ELECTRICAL CALLOUTS SEE DWG NO. 121339-01-000

189828



- 7 MOUNT ELECTRICAL COMPONENTS TO PANELS AND CONNECT CABLES TO COMPONENTS. PANELS WILL BE MOUNTED TO STEP BOX IN MOTORHOME PLANT AFTER FLOOR IS SET.
 - 6 SECURE WITH SOLENOID MOUNTING SCREWS.
 - 5 CABLE ASM-STARTER, EXT (RED 2) WILL BE CONNECTED TO ISOLATED STUD ON CHASSIS IN MOTORHOME PLANT AFTER ALL CONNECTIONS IN BATTERY BOX ARE COMPLETED AND STEP ASM IS INSTALLED AFTER FLOOR IS SET.
 - 4 WIRE MARKED WITH ORANGE TAPE.
 - 3 WIRES ARE PART OF WIRE ASM-CHASSIS
2. BATTERY CABLES ARE NOT TO BE ROUTED OVER BATTERY FILL CAPS.
1. SEE WIRING INSTL-CHASSIS FOR ADDITIONAL INFORMATION.

NOTES:

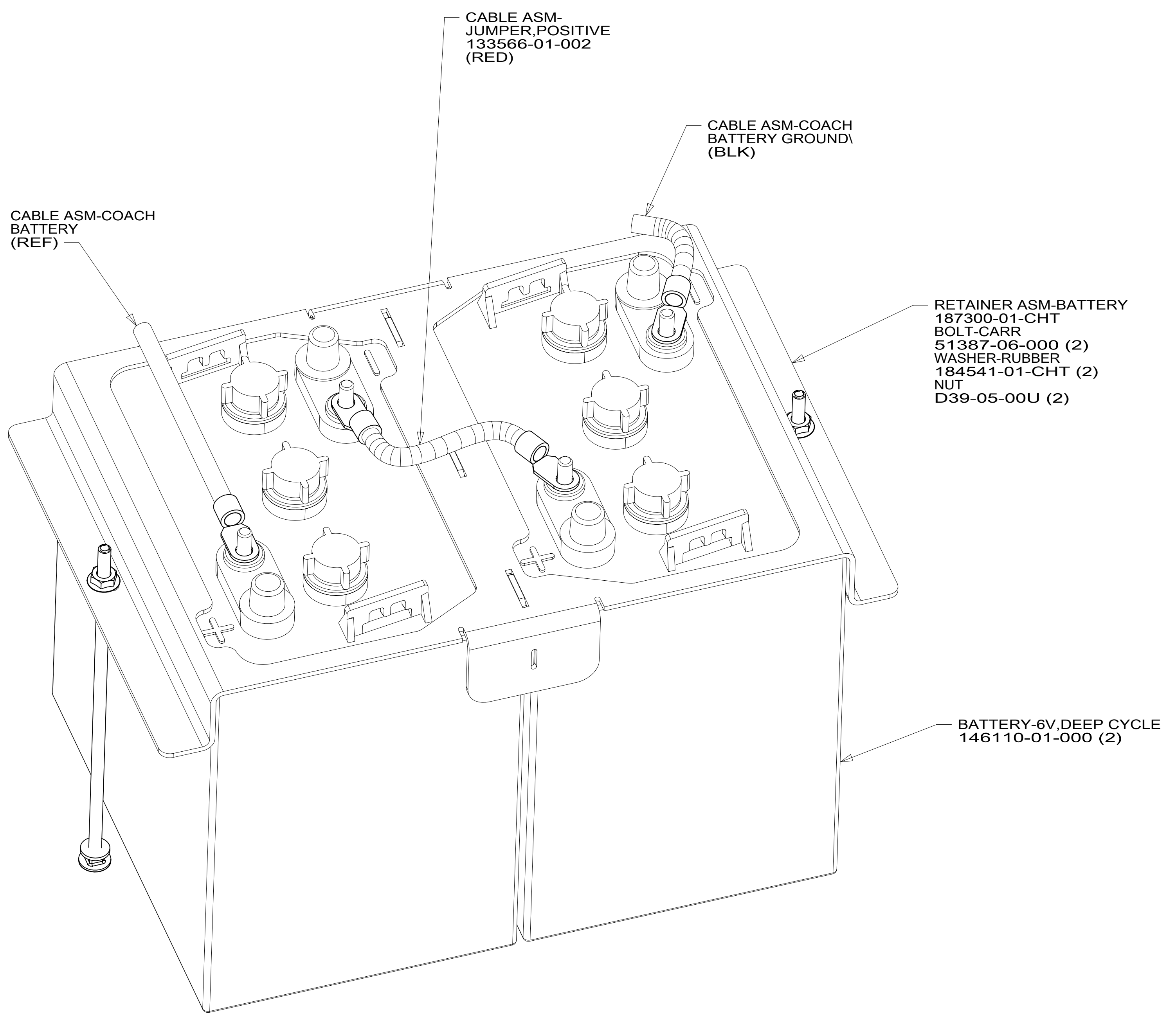
- 640 RENTAL - GAH WITHOUT
- 643 RENTAL - MILES DIXON
- 644 GREAT ALASKAN RENTAL PACKAGE
- 12X BATTERY-ONE
- 22W BATTERY-SECOND
- 265 CODES/STANDARDS-CSA/CMVSS
- 1B1 CODES/STANDARDS USA

FIRST USED	
15 300-SERIES	
DO NOT SCALE DRAWING	
TITLE: BATTERY INSTL	
SHEET 6	PART NO 189828 REV

FOR ELECTRICAL TORQUE SPECIFICATIONS SEE DWG NO. 128783-01-000

FOR ELECTRICAL CALLOUTS SEE DWG NO. 121339-01-000

* 189828



VIEW GA

- 644 GREAT ALASKAN RENTAL PACKAGE
- 265 CODES/STANDARDS-CSA/CMVSS
- 1B1 CODES/STANDARDS USA

1B1 265 644

FIRST USED
15 300-SERIES

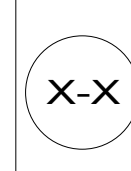
DO NOT SCALE DRAWING

TITLE: **BATTERY INSTL**

SHEET 7 PART NO **189828** REV

FOR ELECTRICAL TORQUE SPECIFICATIONS SEE DWG NO. 128783-01-000

FOR ELECTRICAL CALLOUTS SEE DWG NO. 121339-01-000



* 189828 *