



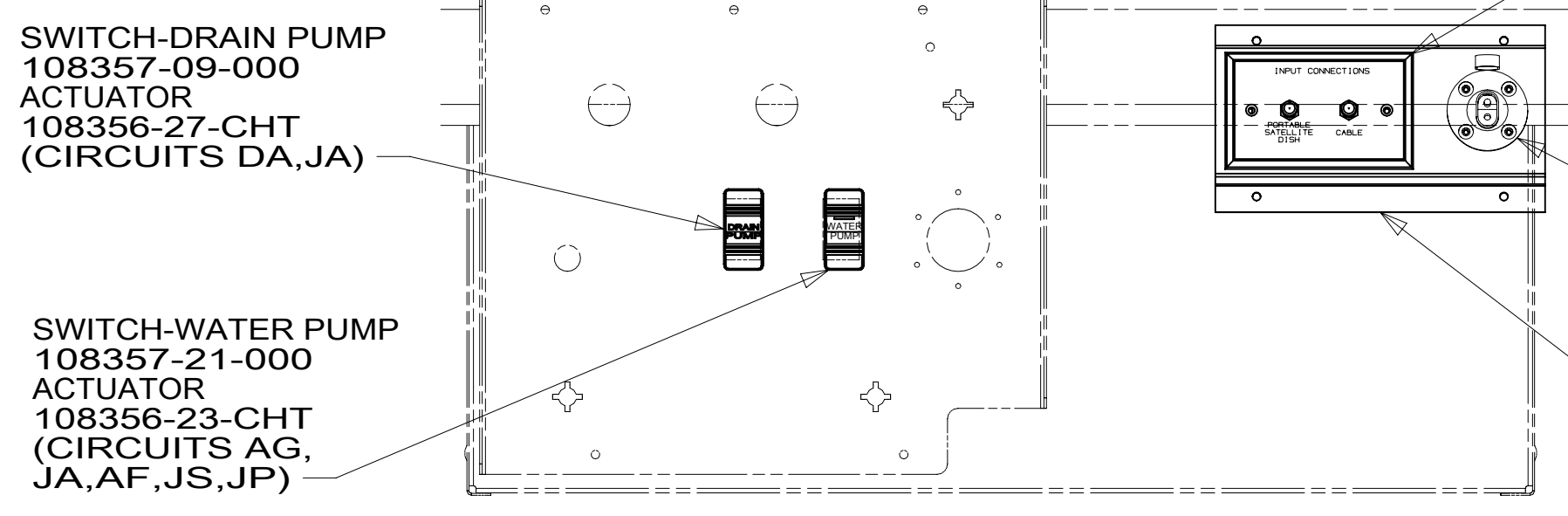
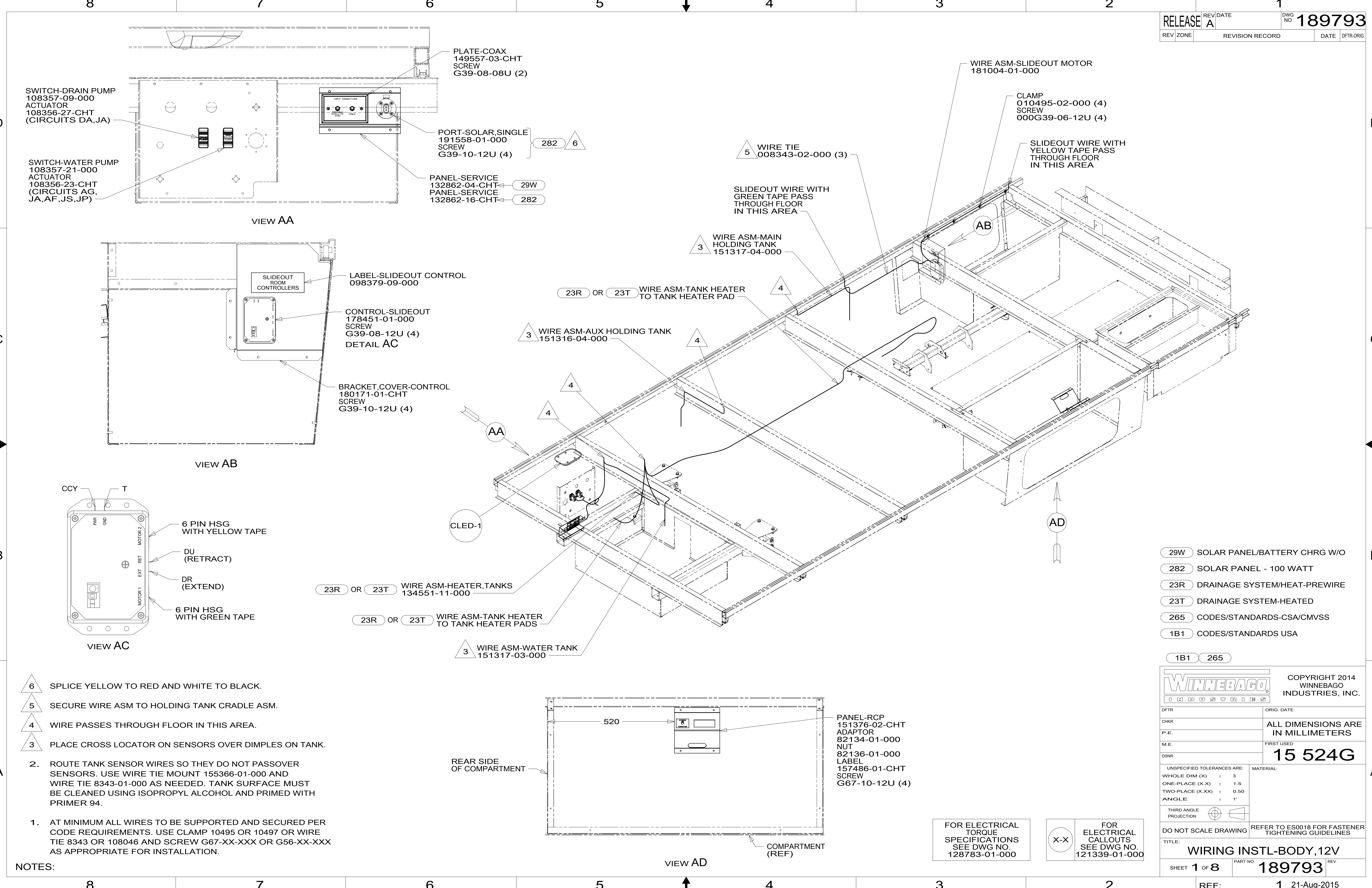
DANGER

Danger of electrical shock, burns or death. Always remove all power sources before attempting any repair, service or diagnostic work. Power can be present from shore power, generator, inverter or battery. All power sources must be disabled and secured before performing any service.

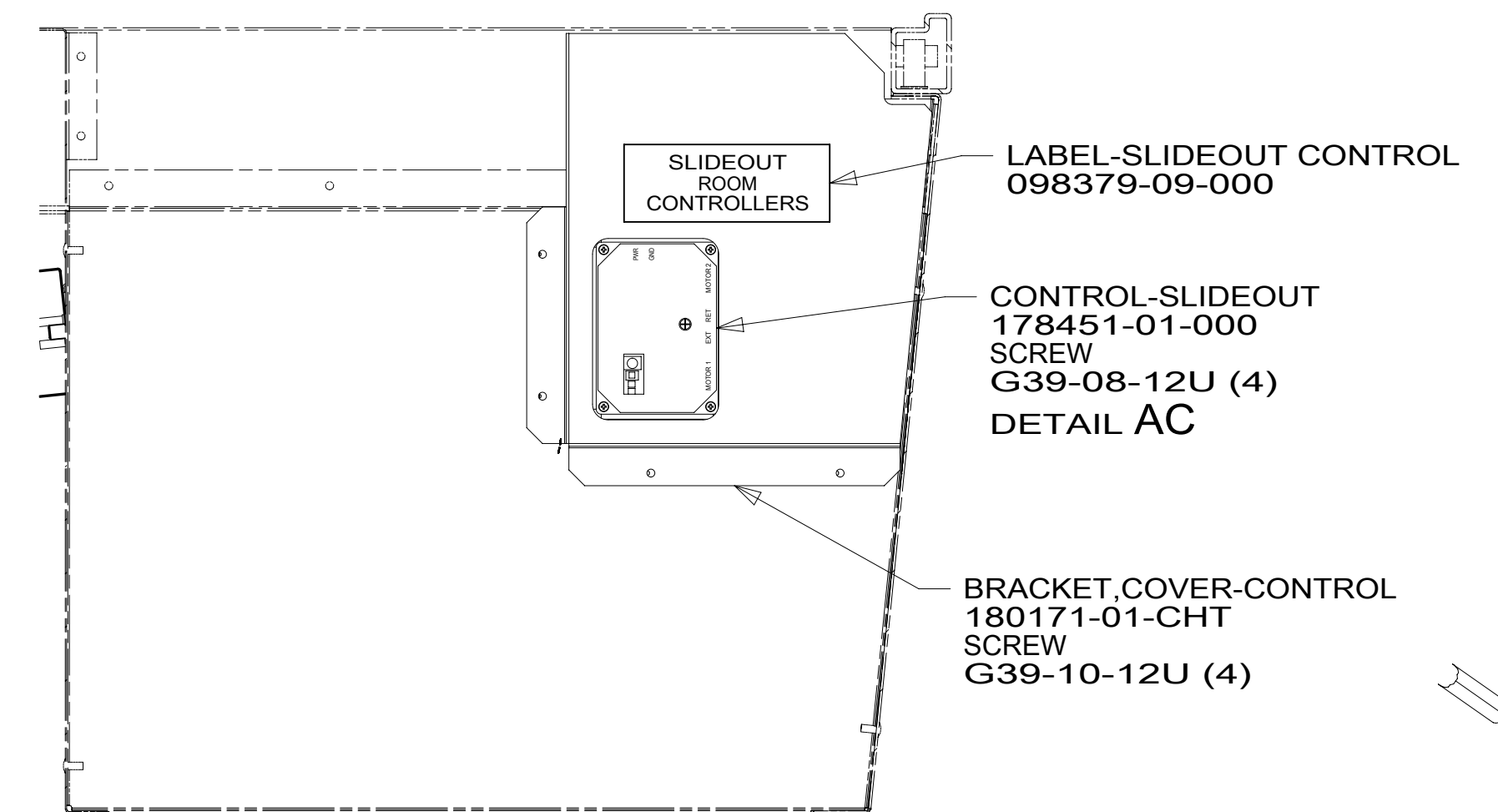


CAUTION

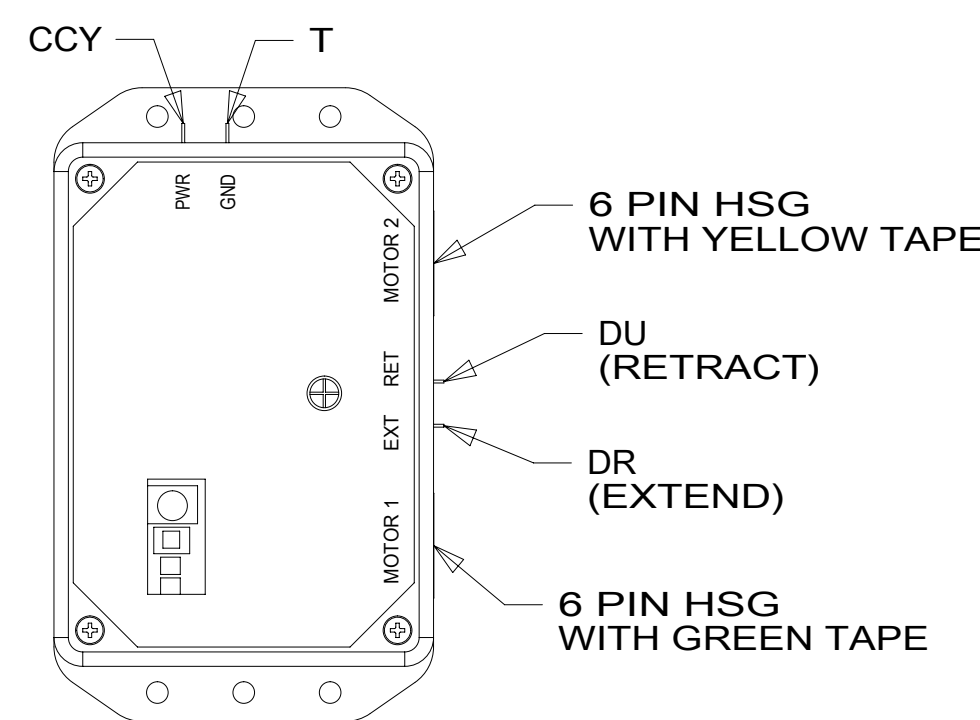
If you lack the skills, tools or equipment to perform diagnostic or repair work leave such work to an authorized Winnebago Industries dealer or other qualified shop.



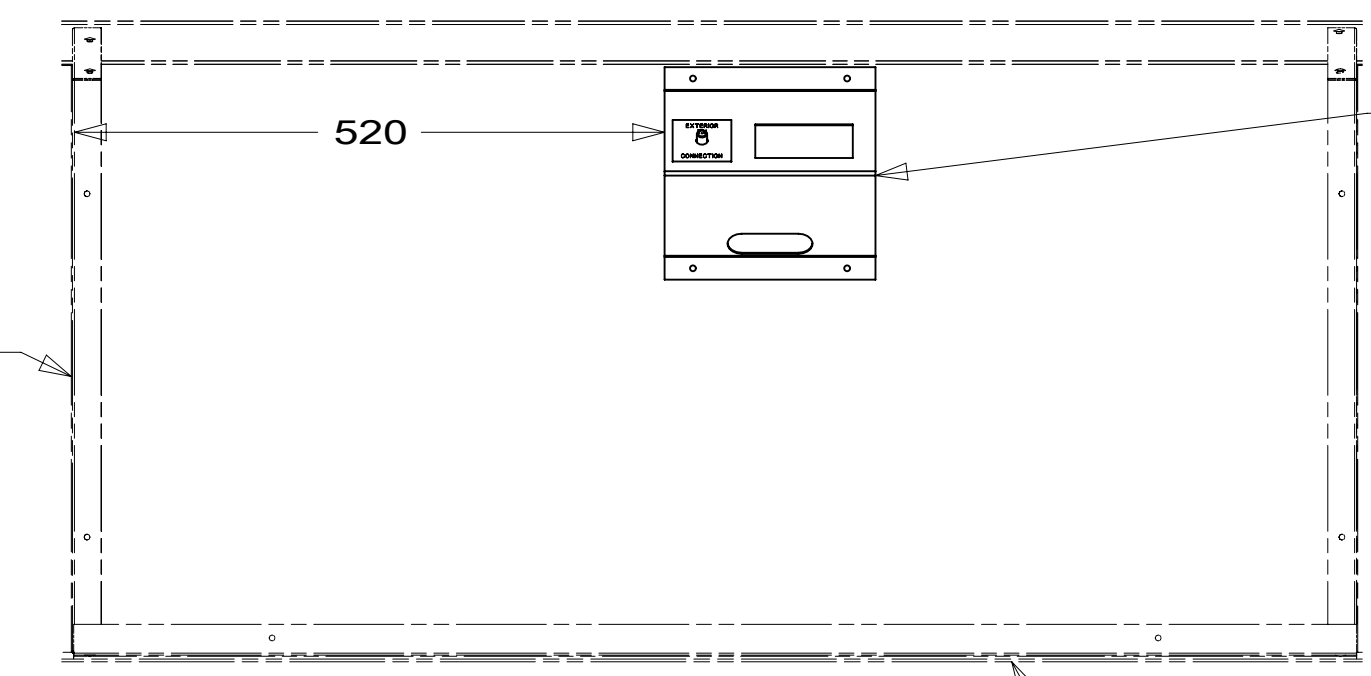
VIEW AA



VIEW AB



VIEW AC



VIEW AD

- NOTES:
- 6 SPLICE YELLOW TO RED AND WHITE TO BLACK.
 - 5 SECURE WIRE ASM TO HOLDING TANK CRADLE ASM.
 - 4 WIRE PASSES THROUGH FLOOR IN THIS AREA.
 - 3 PLACE CROSS LOCATOR ON SENSORS OVER DIMPLES ON TANK.
2. ROUTE TANK SENSOR WIRES SO THEY DO NOT PASSOVER SENSORS. USE WIRE TIE MOUNT 155366-01-000 AND WIRE TIE 8343-01-000 AS NEEDED. TANK SURFACE MUST BE CLEANED USING ISOPROPYL ALCOHOL AND PRIMED WITH PRIMER 94.
 1. AT MINIMUM ALL WIRES TO BE SUPPORTED AND SECURED PER CODE REQUIREMENTS. USE CLAMP 10495 OR 10497 OR WIRE TIE 8343 OR 108046 AND SCREW G67-XX-XXX OR G56-XX-XXX AS APPROPRIATE FOR INSTALLATION.

- 29W SOLAR PANEL/BATTERY CHRGR W/O
- 282 SOLAR PANEL - 100 WATT
- 23R DRAINAGE SYSTEM/HEAT-PREWIRE
- 23T DRAINAGE SYSTEM-HEATED
- 265 CODES/STANDARDS-CSA/CMVSS
- 1B1 CODES/STANDARDS USA

1B1 265

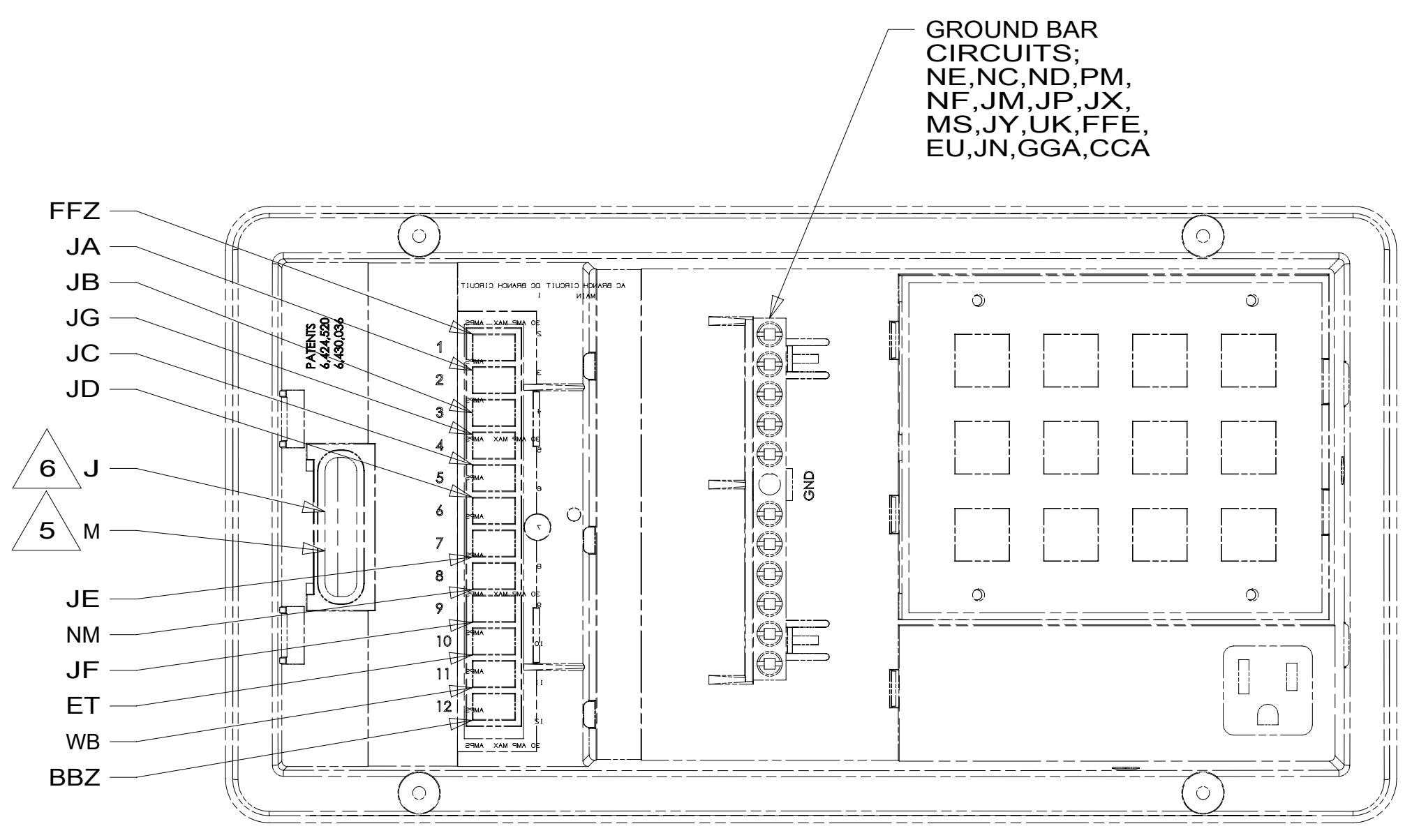
WINNEBAGO COPYRIGHT 2014 WINNEBAGO INDUSTRIES, INC.

DFT-ORIG	ORIG. DATE
CHGR	ALL DIMENSIONS ARE IN MILLIMETERS
P.E.	FIRST USED
M.E.	15 524G
DSNR	MATERIAL:
UNSPECIFIED TOLERANCES ARE:	
WHOLE DIM (X)	: 3
ONE-PLACE (X.X)	: 1.5
TWO-PLACE (X.XX)	: 0.50
ANGLE	: 1°
THIRD ANGLE PROJECTION	
DO NOT SCALE DRAWING	REFER TO ES0018 FOR FASTENER TIGHTENING GUIDELINES
TITLE: WIRING INSTL-BODY, 12V	
SHEET 1 OF 8	PART NO 189793 REV
REF:	1 21-Aug-2015

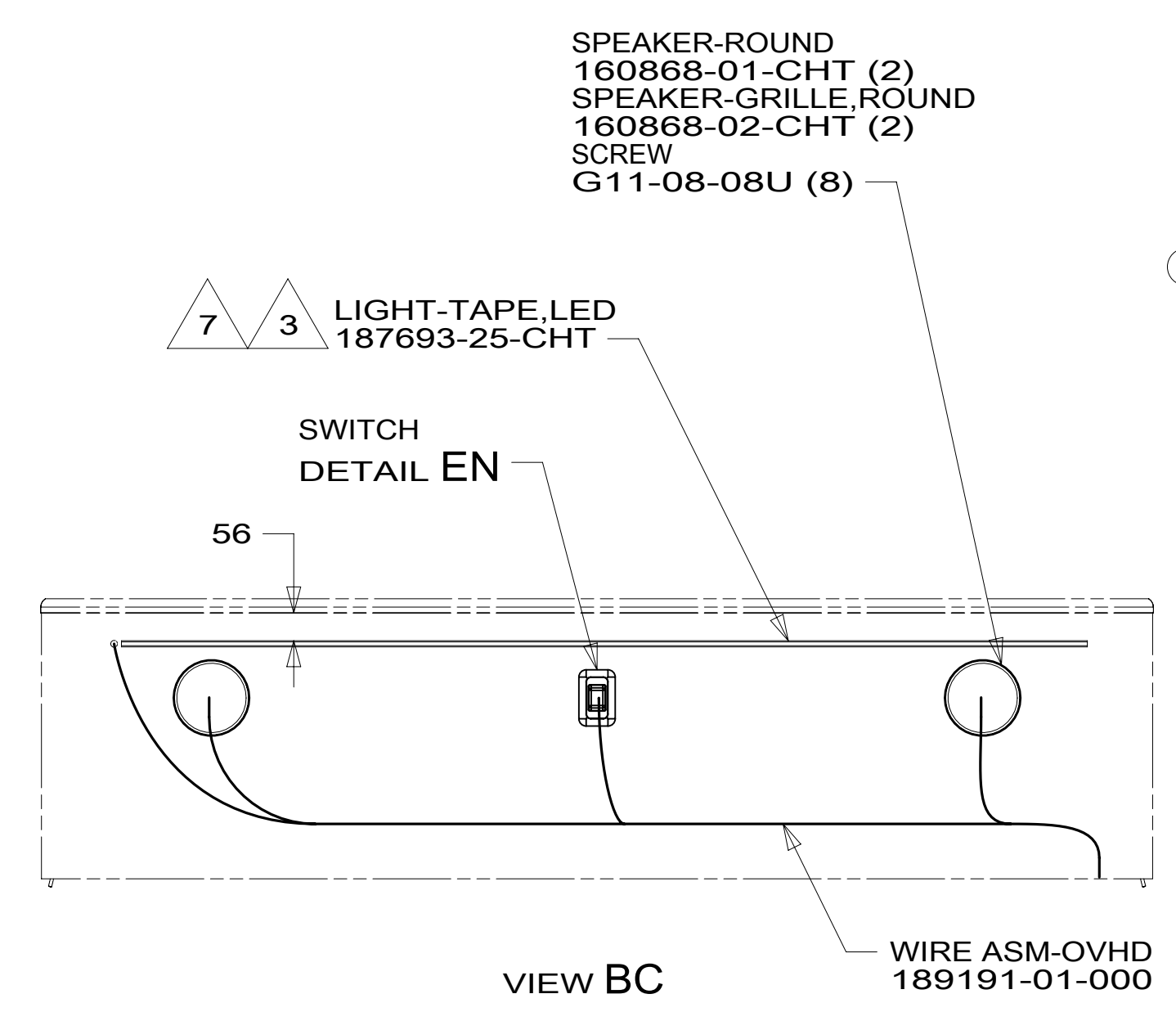
FOR ELECTRICAL TORQUE SPECIFICATIONS SEE DWG NO. 128783-01-000

FOR ELECTRICAL CALLOUTS SEE DWG NO. 121339-01-000

189793



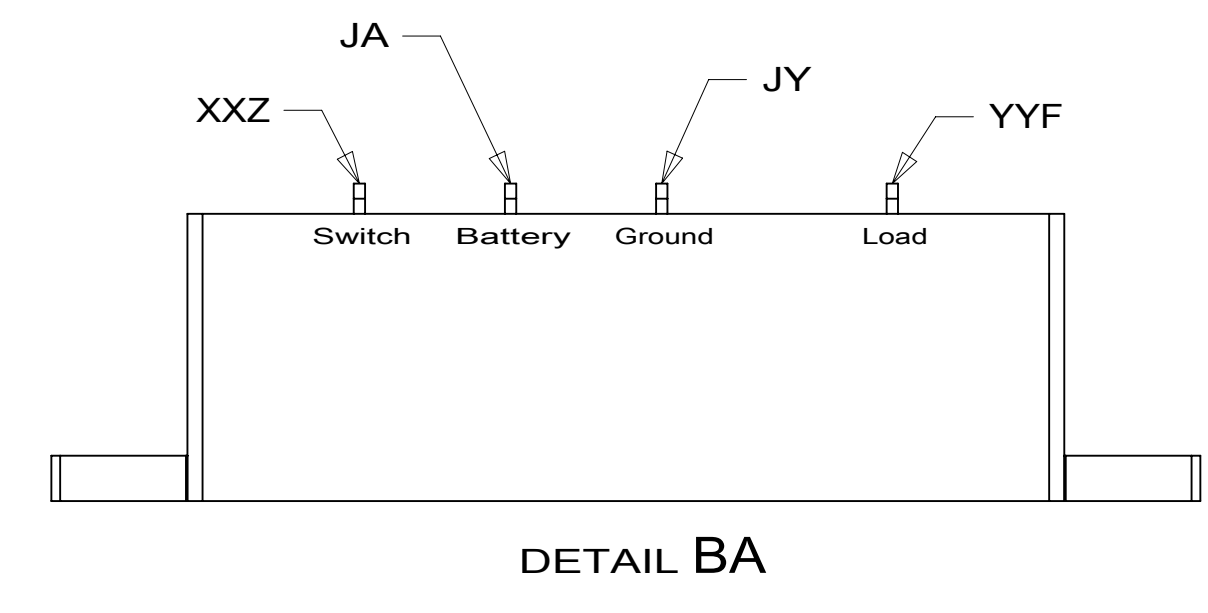
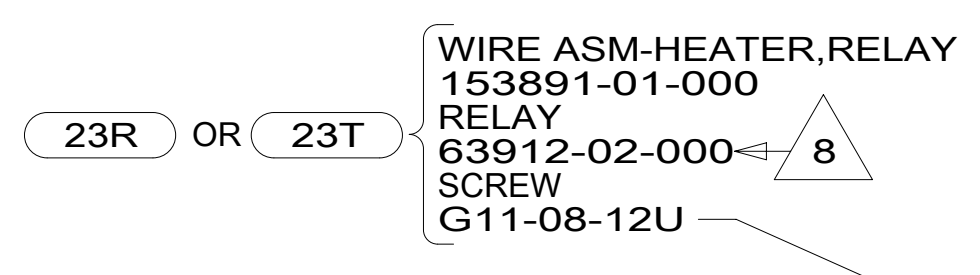
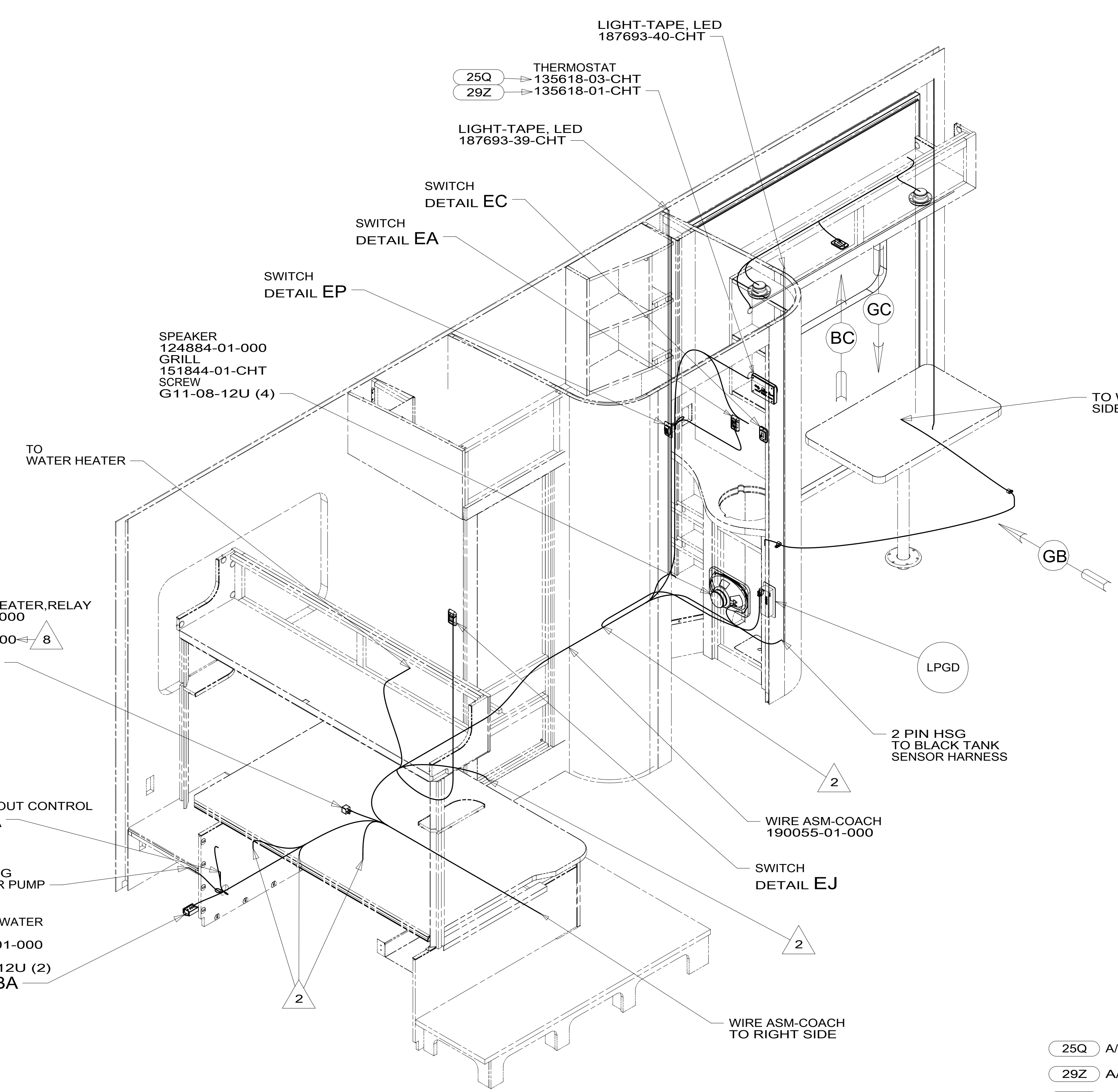
DETAIL BB 4



- 8 SECURE ABOVE FLOOR WITH SCREW CALLED OUT.
- 7 CENTER LIGHT STRIP.
- 6 CIRCUIT FROM WIRE ASM-CHASSIS.
- 5 CIRCUIT FROM WIRE ASM-COACH.
- 4 FOR REFERENCE ONLY. SEE LOAD CENTER/ATS ASM FOR ADDITIONAL INFORMATION.
- 3 CLEAN SURFACE WITH CLEAN TOWEL.
- 2 WIRE PASSES THROUGH FLOOR IN THIS AREA.

1. AT MINIMUM ALL WIRES TO BE SUPPORTED AND SECURED PER CODE REQUIREMENTS. USE CLAMP 10495 OR 10497 OR WIRE TIE 8343 OR 108046 AND SCREW G67-XX-XXX OR G56-XX-XXX AS APPROPRIATE FOR INSTALLATION.

NOTES:



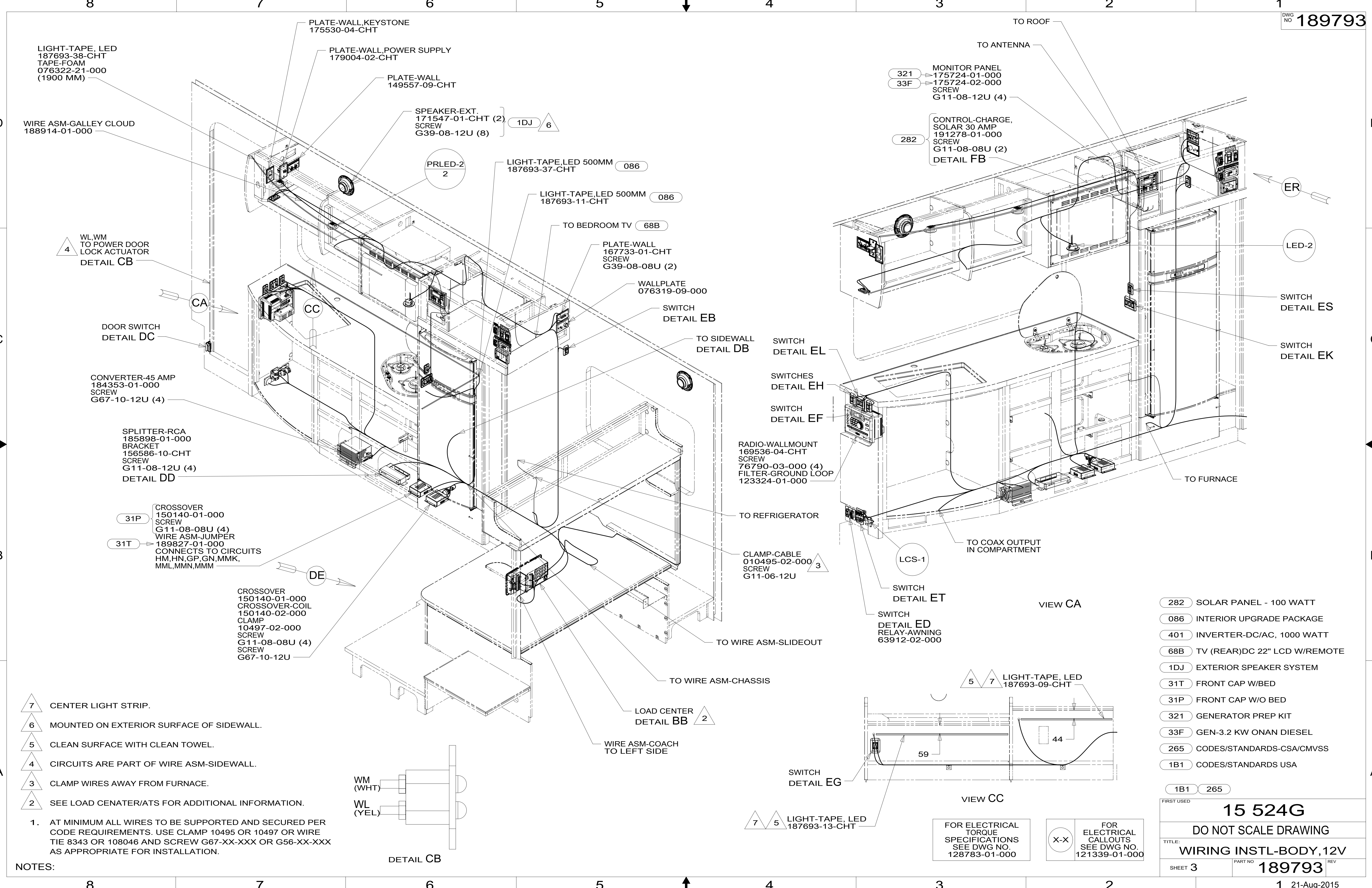
FOR ELECTRICAL
TORQUE
SPECIFICATIONS
SEE DWG NO.
128783-01-000

FOR
ELECTRICAL
CALLOUTS
SEE DWG NO.
121339-01-000

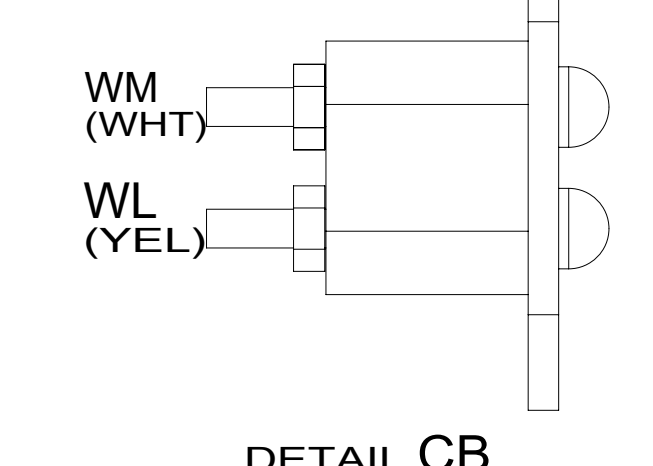
- 25Q A/C ROOF-MOUNT
- 29Z A/C 14,800 - HEAT PUMP
- 23R DRAINAGE SYSTEM/HEAT-PREWIRE
- 23T DRAINAGE SYSTEM-HEATED
- 265 CODES/STANDARDS-CSA/CMVSS
- 1B1 CODES/STANDARDS USA

FIRST USED		15 524G	
DO NOT SCALE DRAWING			
TITLE: WIRING INSTL-BODY, 12V			
SHEET 2	PART NO	189793	REV
		1	21-Aug-2015

189793



- 7 CENTER LIGHT STRIP.
 - 6 MOUNTED ON EXTERIOR SURFACE OF SIDEWALL.
 - 5 CLEAN SURFACE WITH CLEAN TOWEL.
 - 4 CIRCUITS ARE PART OF WIRE ASM-SIDEWALL.
 - 3 CLAMP WIRES AWAY FROM FURNACE.
 - 2 SEE LOAD CENTER/ATS FOR ADDITIONAL INFORMATION.
1. AT MINIMUM ALL WIRES TO BE SUPPORTED AND SECURED PER CODE REQUIREMENTS. USE CLAMP 10495 OR 10497 OR WIRE TIE 8343 OR 108046 AND SCREW G67-XX-XXX OR G56-XX-XXX AS APPROPRIATE FOR INSTALLATION.



- 282 SOLAR PANEL - 100 WATT
- 086 INTERIOR UPGRADE PACKAGE
- 401 INVERTER-DC/AC, 1000 WATT
- 68B TV (REAR)DC 22" LCD W/REMOTE
- 1DJ EXTERIOR SPEAKER SYSTEM
- 31T FRONT CAP W/BED
- 31P FRONT CAP W/O BED
- 321 GENERATOR PREP KIT
- 33F GEN-3.2 KW ONAN DIESEL
- 265 CODES/STANDARDS-CSA/CMVSS
- 1B1 CODES/STANDARDS USA

FIRST USED

15 524G

DO NOT SCALE DRAWING

TITLE: **WIRING INSTL-BODY, 12V**

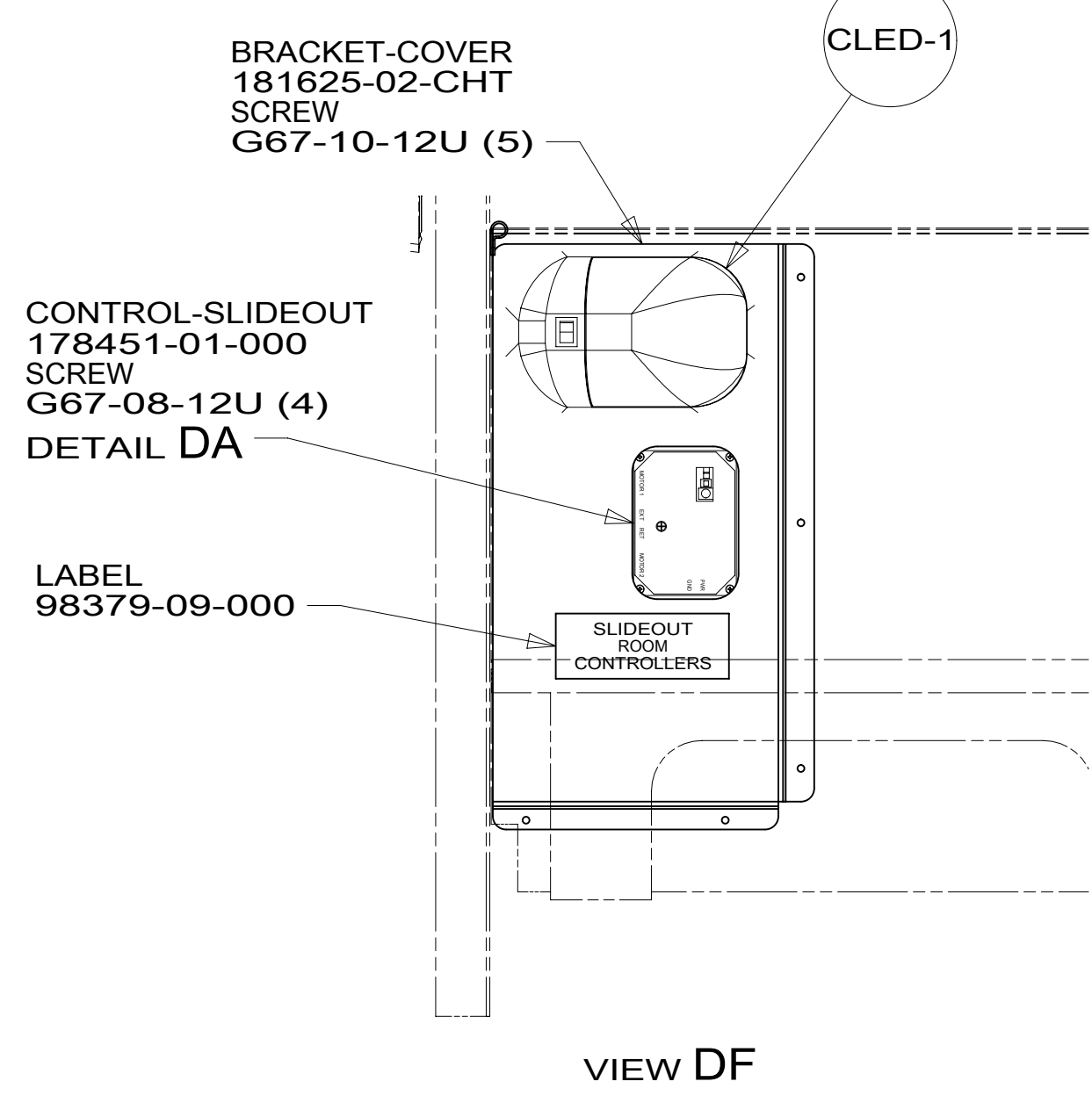
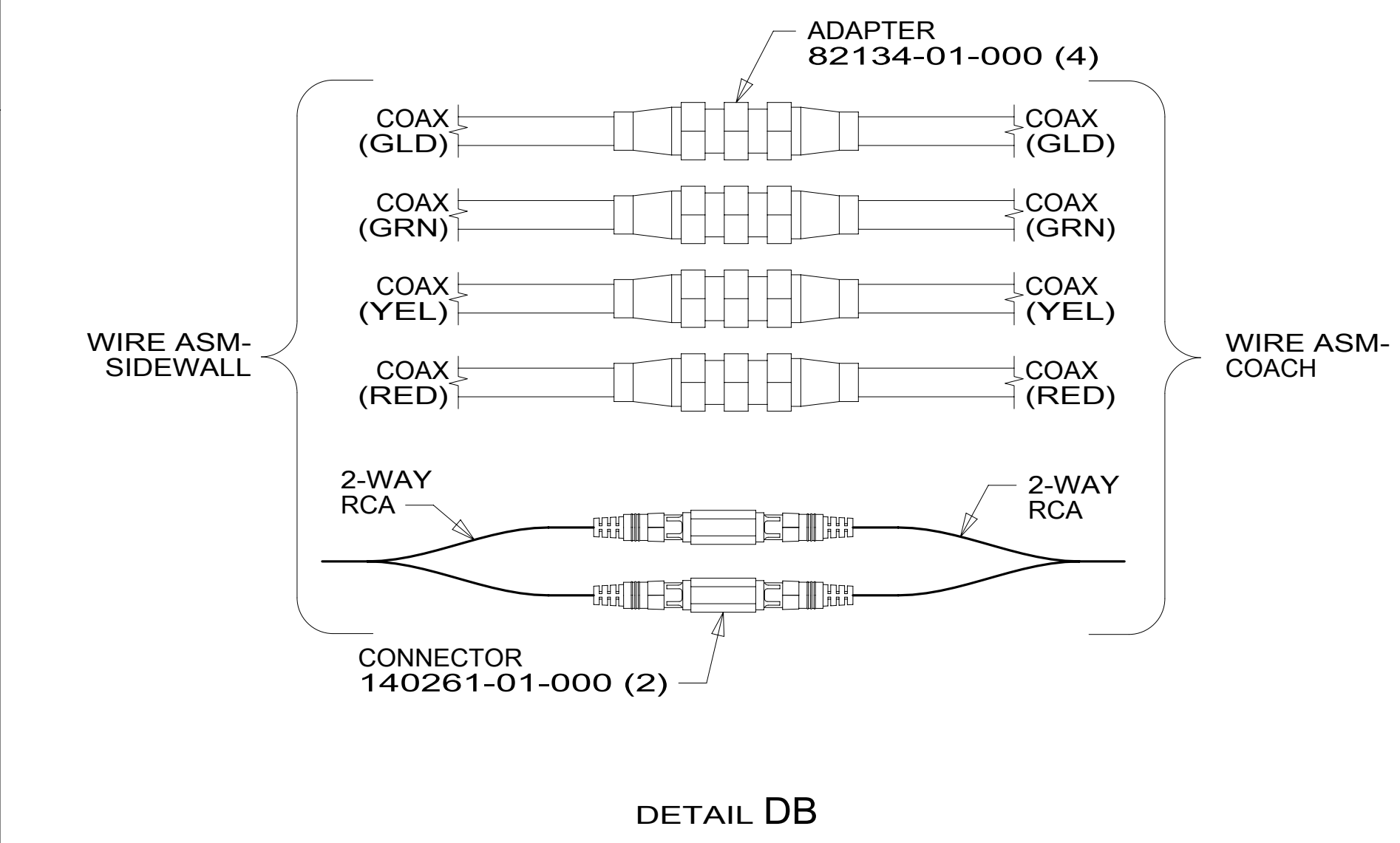
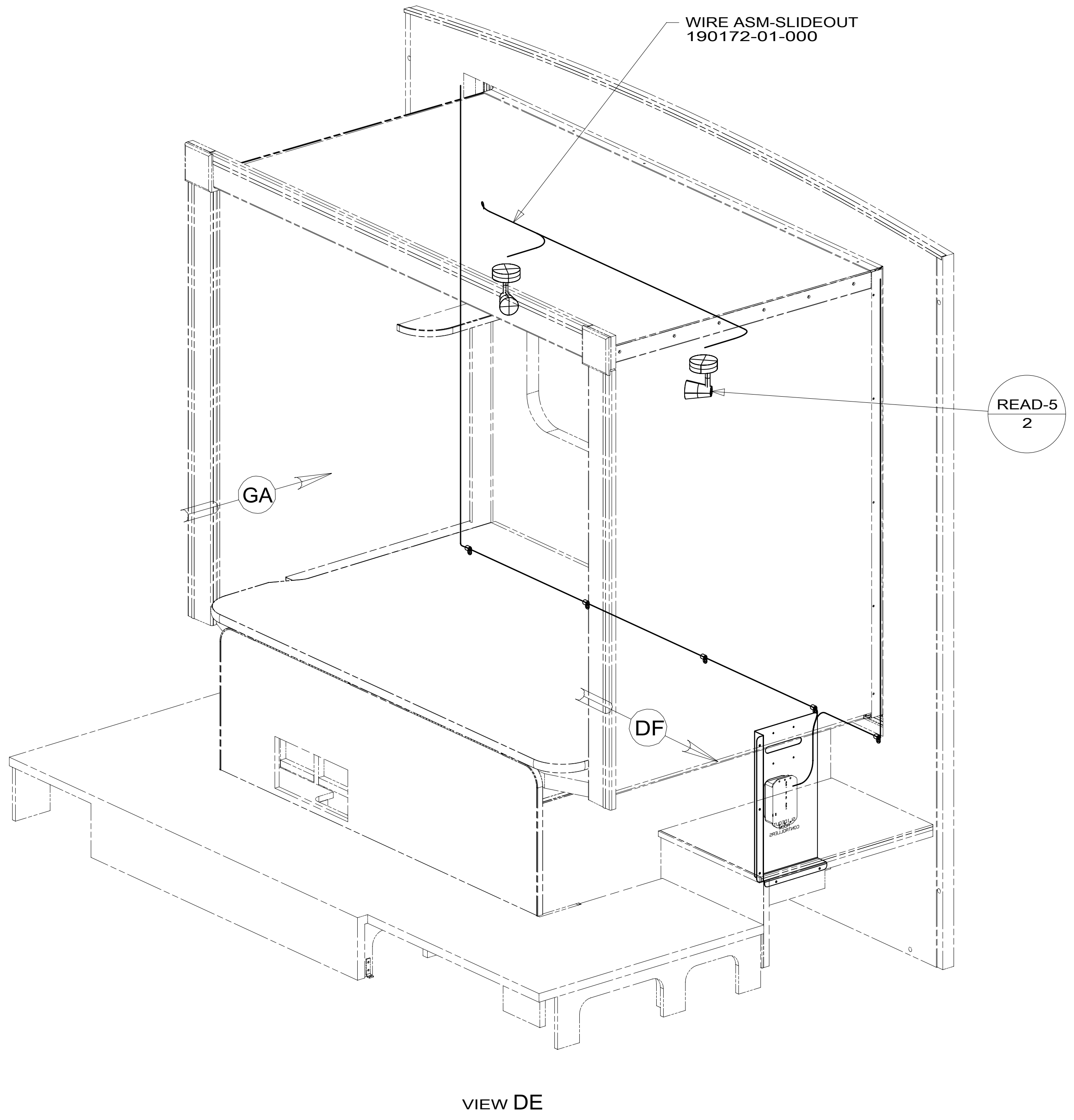
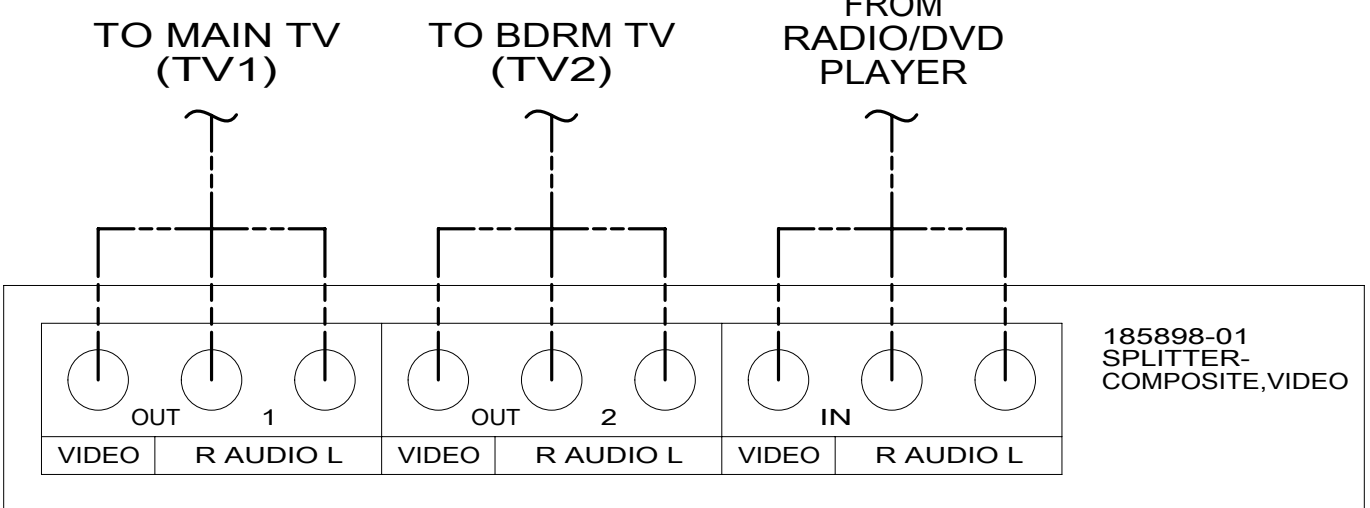
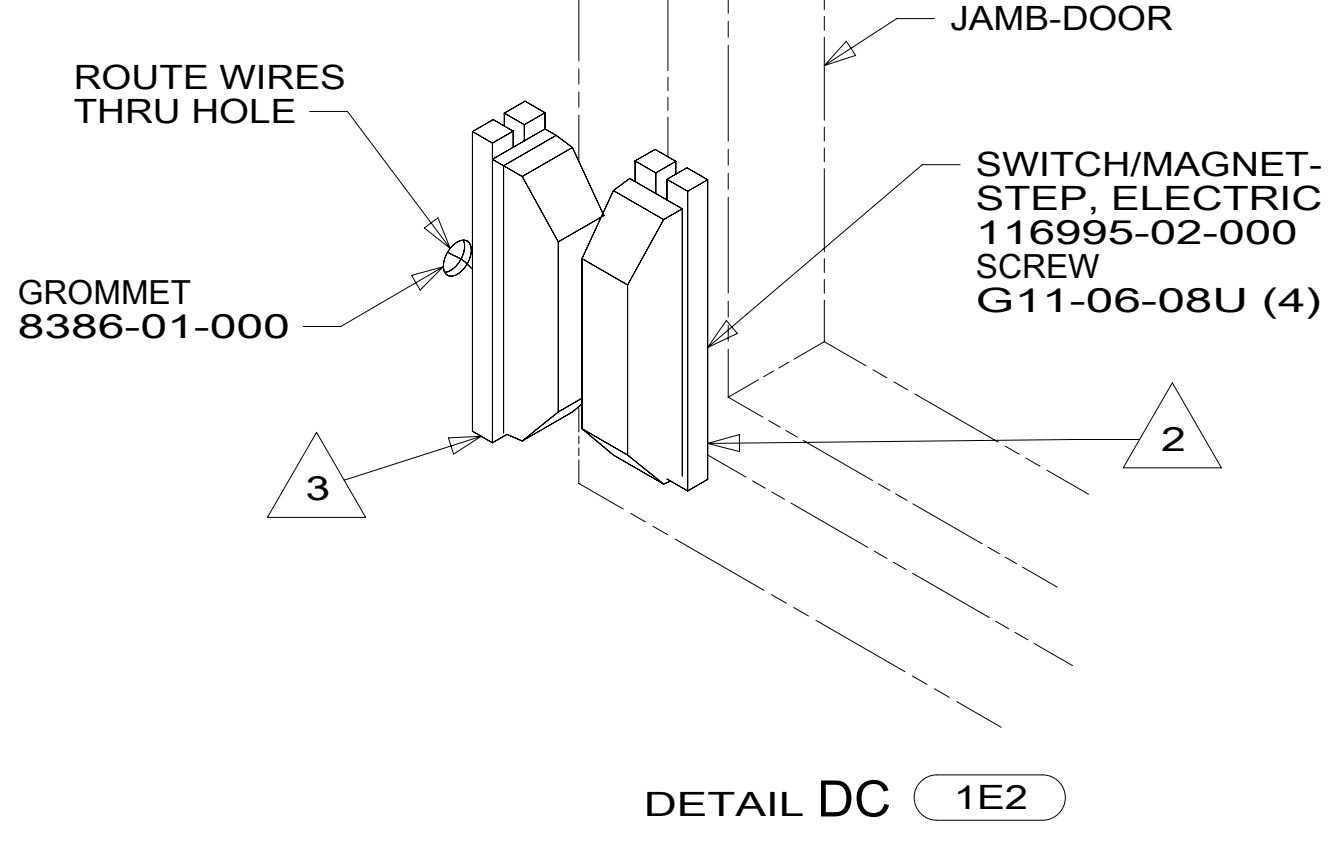
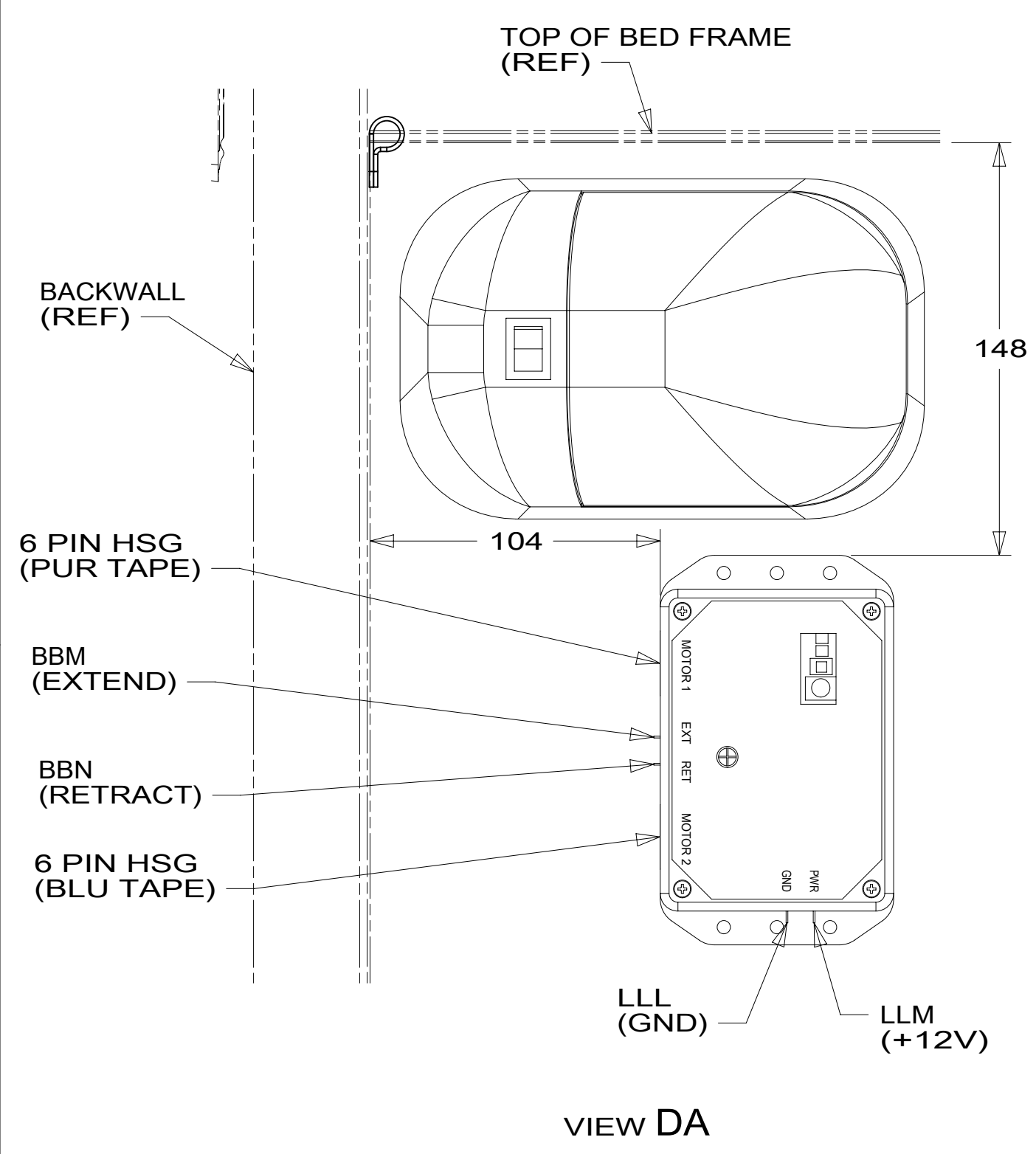
SHEET 3 PART NO **189793** REV

1 21-Aug-2015

FOR ELECTRICAL TORQUE SPECIFICATIONS SEE DWG NO. 128783-01-000

FOR ELECTRICAL CALLOUTS SEE DWG NO. 121339-01-000

189793



- NOTES:
- 3 MOUNT SWITCH AND SPACER TO BLOCK ON JAMB. ADJUST HEIGHT TO MATCH MAGNET.
 - 2 MOUNT MAGNET USING PILOT HOLES IN SCREEN DOOR FRAME. MOUNT WITH MAGNET TOWARD SWITCH.
 - 1 CONNECT RED WIRE TO YELLOW WIRE AND CONNECT BLACK WIRE TO WHITE WIRE.

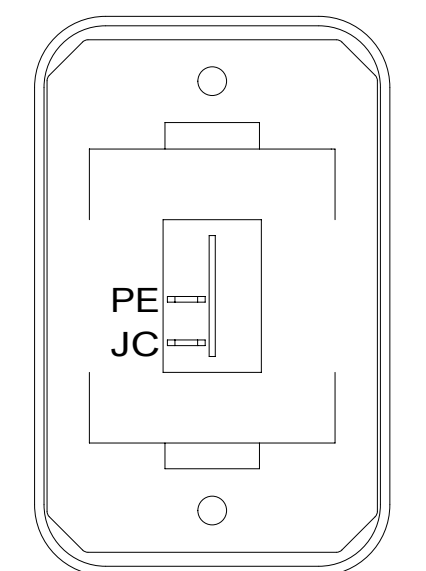
- 1E2 ENTRANCE STEP-ELEC.
- 265 CODES/STANDARDS-CSA/CMVSS
- 1B1 CODES/STANDARDS USA

FIRST USED		15 524G	
DO NOT SCALE DRAWING			
TITLE: WIRING INSTL-BODY, 12V			
SHEET 4	PART NO. 189793	REV	

FOR ELECTRICAL TORQUE SPECIFICATIONS SEE DWG NO. 128783-01-000

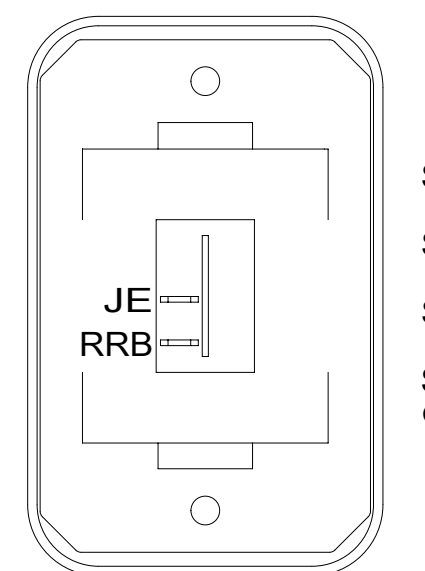
FOR ELECTRICAL CALLOUTS SEE DWG NO. 121339-01-000

189793



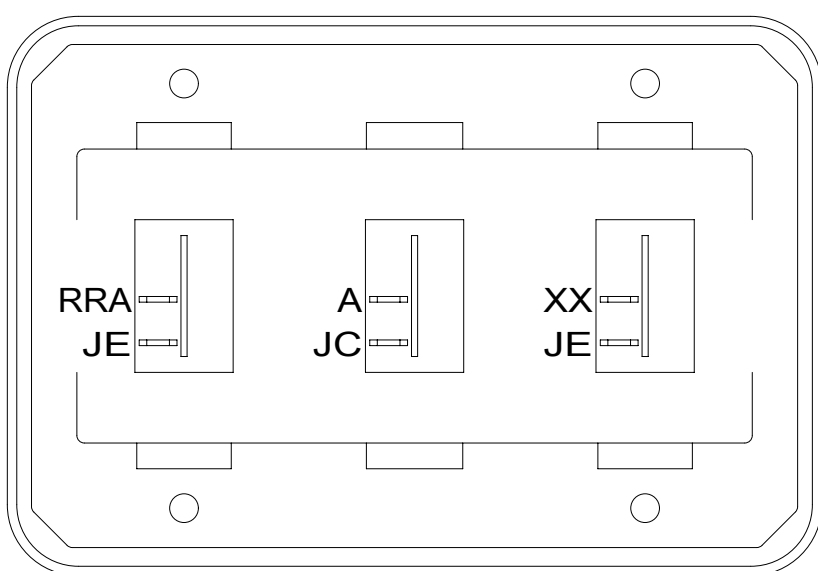
SWITCH-ROCKER
135740-01-CHT
SWITCH-BASE
135741-01-CHT
SWITCH-BEZEL
135742-01-CHT
SCREW
G11-08-08U (2)

DETAIL EA



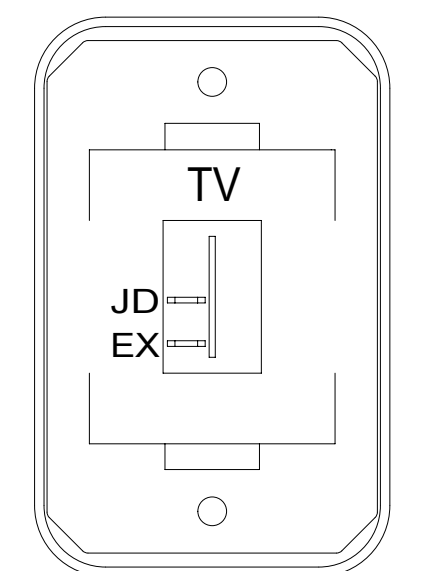
SWITCH-ROCKER
135740-01-CHT
SWITCH-BASE
135741-01-CHT
SWITCH-BEZEL
135742-01-CHT
SCREW
G11-08-08U (2)

DETAIL EG



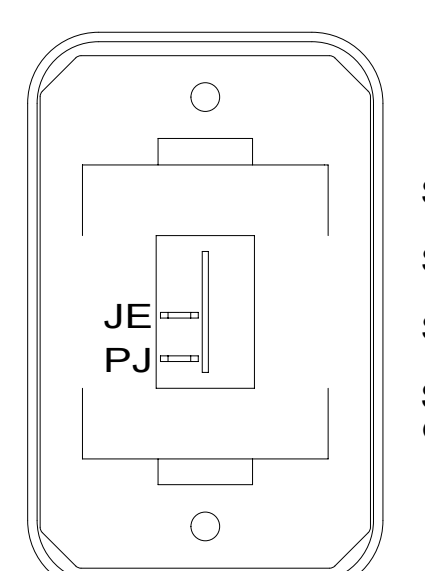
SWITCH-ROCKER
135740-01-CHT (3)
SWITCH-BASE
135741-03-CHT
SWITCH-BEZEL
135742-03-CHT
SCREW
G11-08-08U (4)

DETAIL EK



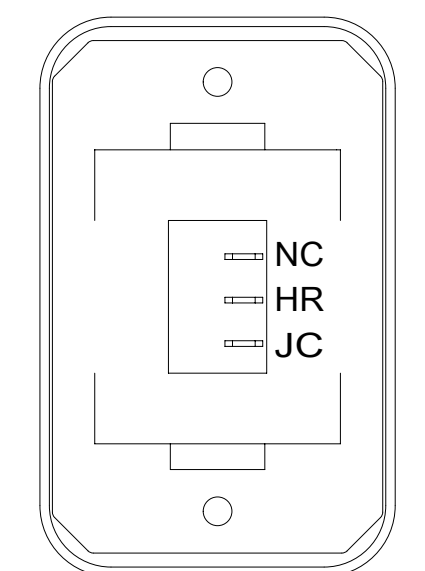
SWITCH-ROCKER
135740-01-CHT
SWITCH-BASE
135741-01-CHT
SWITCH-BEZEL
135742-45-CHT
SCREW
G11-08-08U (2)

DETAIL EB



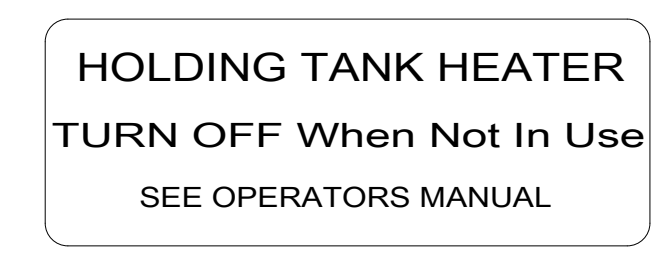
SWITCH-ROCKER
135740-01-CHT
SWITCH-BASE
135741-01-CHT
SWITCH-BEZEL
135742-01-CHT
SCREW
G11-08-08U (2)

DETAIL EH

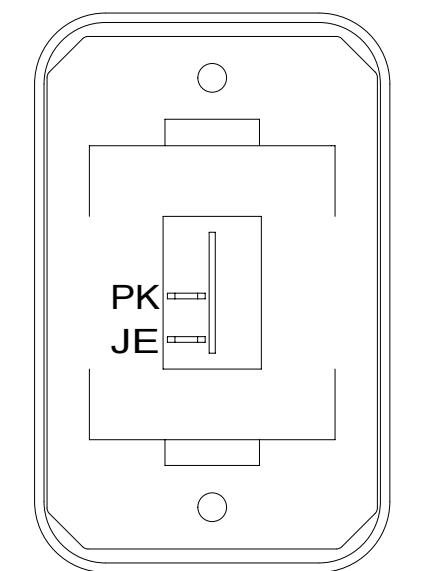


SWITCH-BLANK
138253-01-CHT ← 1JD
SWITCH-ROCKER
135740-06-CHT ← 23T OR 23R
SWITCH-BASE
135741-01-CHT
SWITCH-BEZEL
135742-01-CHT
SCREW
G11-08-08U (2)
LABEL
134563-01-CHT ← 23T OR 23R

DETAIL EM

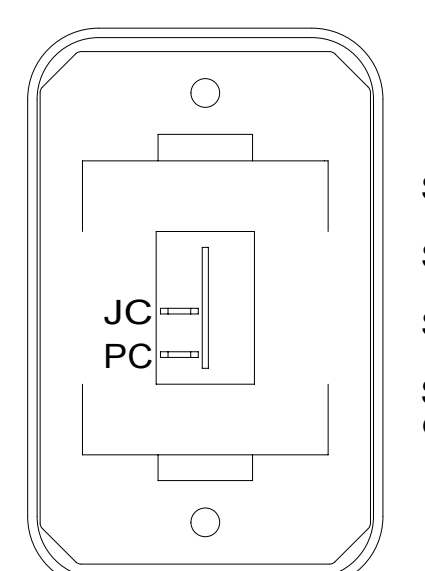


DETAIL EM



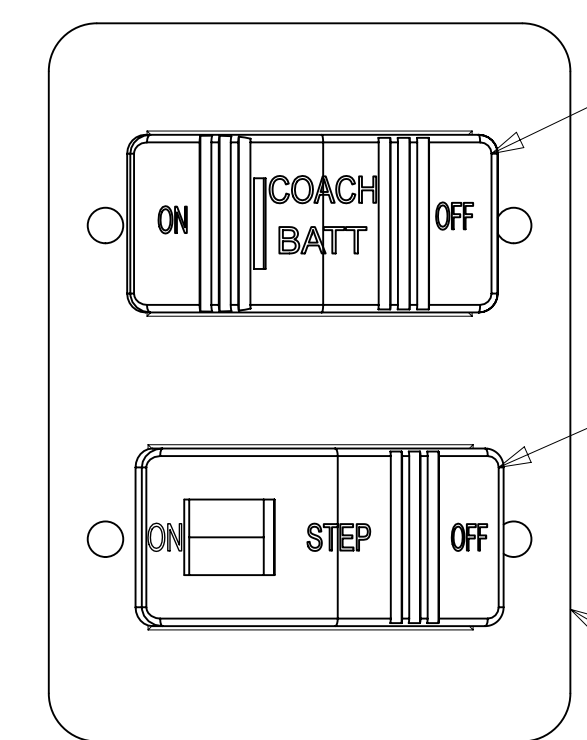
SWITCH-ROCKER
135740-01-CHT
SWITCH-BASE
135741-01-CHT
SWITCH-BEZEL
135742-01-CHT
SCREW
G11-08-08U (2)

DETAIL EC



SWITCH-ROCKER
135740-01-CHT
SWITCH-BASE
135741-01-CHT
SWITCH-BEZEL
135742-01-CHT
SCREW
G11-08-08U (2)

DETAIL EJ

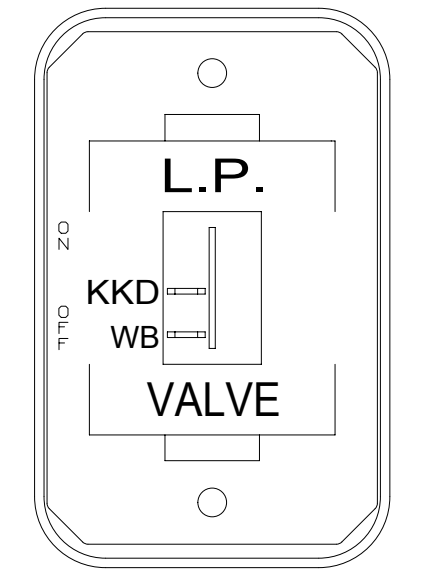


SWITCH-BATT DISC
108357-18-000
ACTUATOR-BATT DISC
108356-19-CHT
ADD WIRE ASM-THERM
186796-01-000

SWITCH-STEP
108357-19-000 1E2

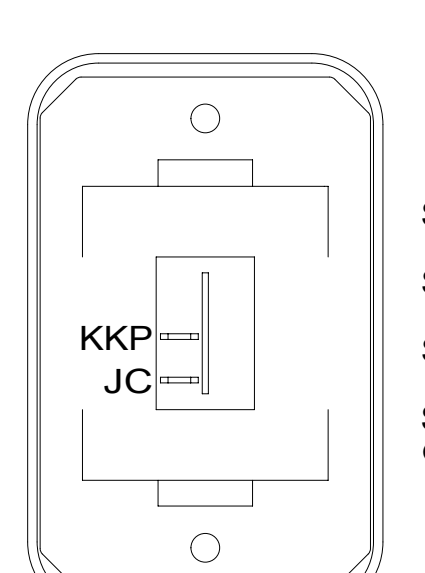
PLATE-SWITCH
158431-17-CHT
SCREW
G11-06-10U (4)

DETAIL ET



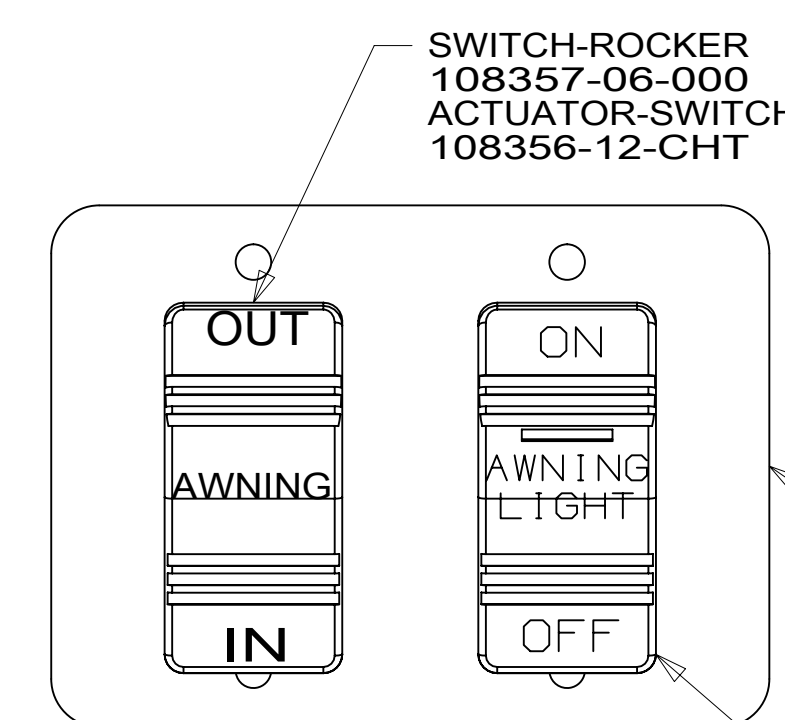
SWITCH-ROCKER
135740-01-CHT
SWITCH-BASE
135741-01-CHT
SWITCH-BEZEL
135742-59-CHT
SCREW
G11-08-08U (2)

DETAIL EE



SWITCH-ROCKER
135740-01-CHT
SWITCH-BASE
135741-01-CHT
SWITCH-BEZEL
135742-01-CHT
SCREW
G11-08-08U (2)

DETAIL EN

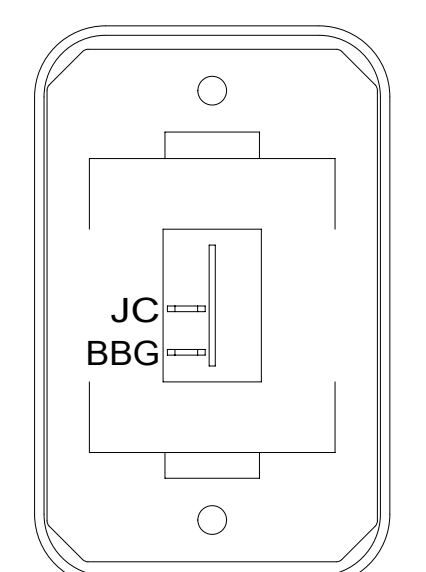


SWITCH-ROCKER
108357-06-000
ACTUATOR-SWITCH
108356-12-CHT

PLATE-SWITCH
158431-17-CHT
SCREW
G11-06-10U (4)

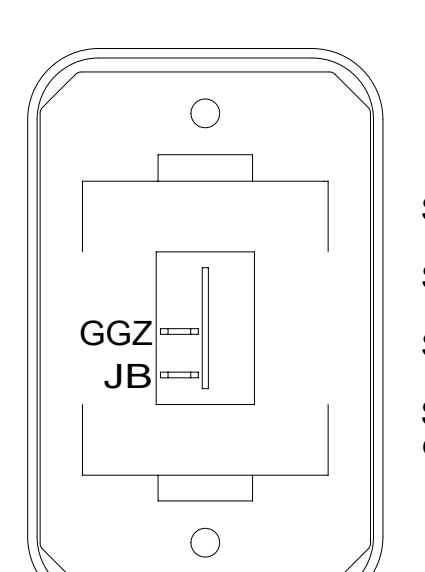
SWITCH-ROCKER
108357-14-000
ACTUATOR-SWITCH
108356-28-CHT

DETAIL ED



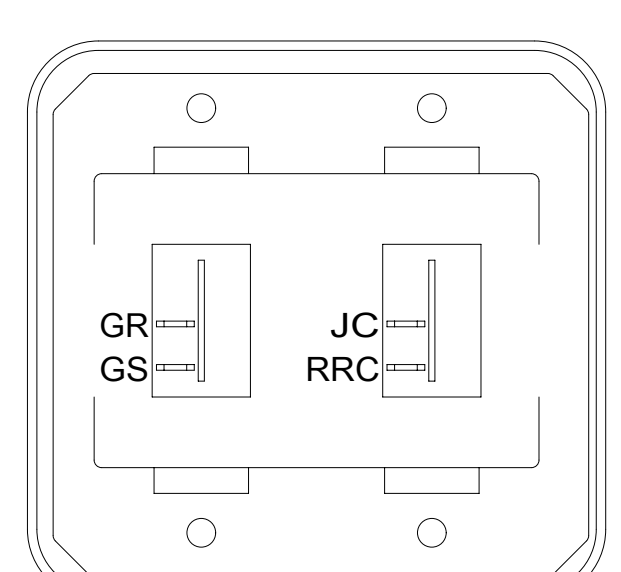
SWITCH-ROCKER
135740-01-CHT
SWITCH-BASE
135741-01-CHT
SWITCH-BEZEL
135742-01-CHT
SCREW
G11-08-08U (2)

DETAIL EF



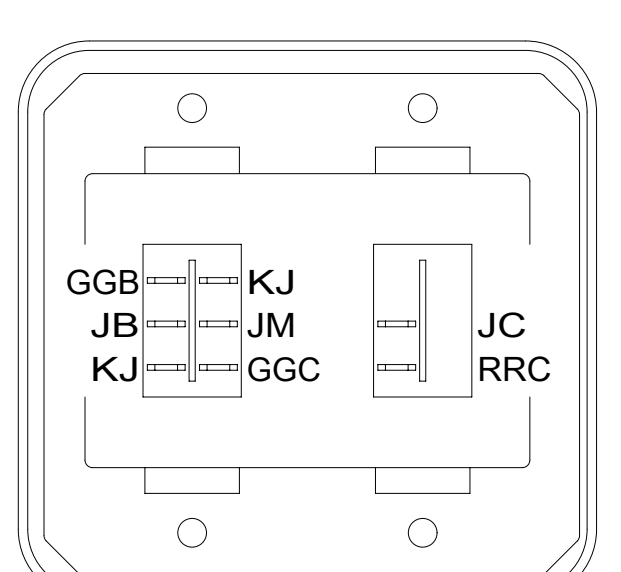
SWITCH-ROCKER
135740-01-CHT
SWITCH-BASE
135741-01-CHT
SWITCH-BEZEL
135742-01-CHT
SCREW
G11-08-08U (2)

DETAIL ES



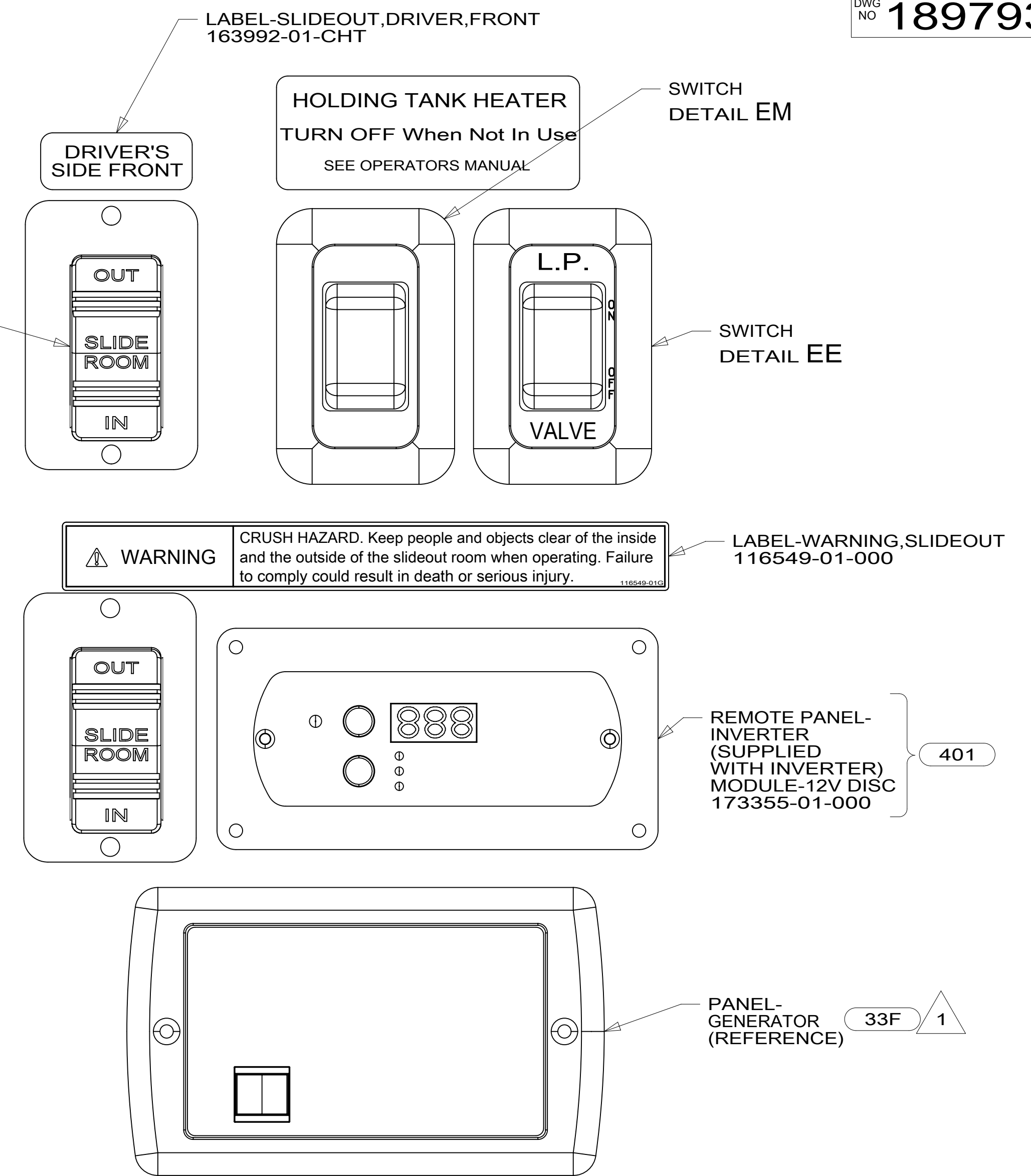
SWITCH-ROCKER
135740-01-CHT (2)
SWITCH-BASE
135741-02-CHT
SWITCH-BEZEL
135742-02-CHT
SCREW
G11-06-16U (4)

DETAIL EL 710



SWITCH-ROCKER
135740-01-CHT
135740-03-CHT
SWITCH-BASE
135741-02-CHT
SWITCH-BEZEL
135742-02-CHT
SCREW
G11-06-16U (4)

DETAIL EL 316



FOR ELECTRICAL TORQUE SPECIFICATIONS SEE DWG NO. 128783-01-000

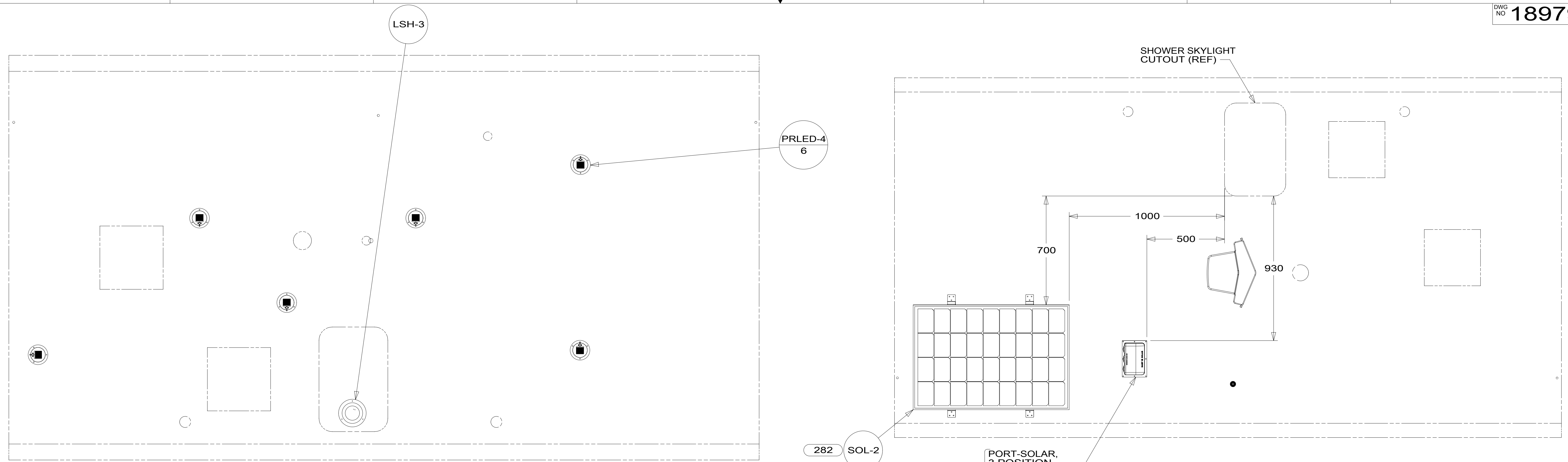
FOR ELECTRICAL CALLOUTS SEE DWG NO. 121339-01-000

- 33F GEN-3.2 KW ONAN DIESEL
- 401 INVERTER-DC/AC, 1000 WATT
- 1JD DRAINAGE SYSTEM-HEATED-W/O
- 316 SKYLIGHT/ROOF VENT, POWER
- 710 VENT ROOF-POWERED,INSULATED
- 23R DRAINAGE SYSTEM/HEAT-PREWIRE
- 23T DRAINAGE SYSTEM-HEATED
- 1E2 ENTRANCE STEP-ELEC.
- 265 CODES/STANDARDS-CSA/CMVSS
- 1B1 CODES/STANDARDS USA

1B1	265
FIRST USED	
15 524G	
DO NOT SCALE DRAWING	
TITLE: WIRING INSTL-BODY, 12V	
SHEET 5	PART NO 189793 REV
1 21-Aug-2015	

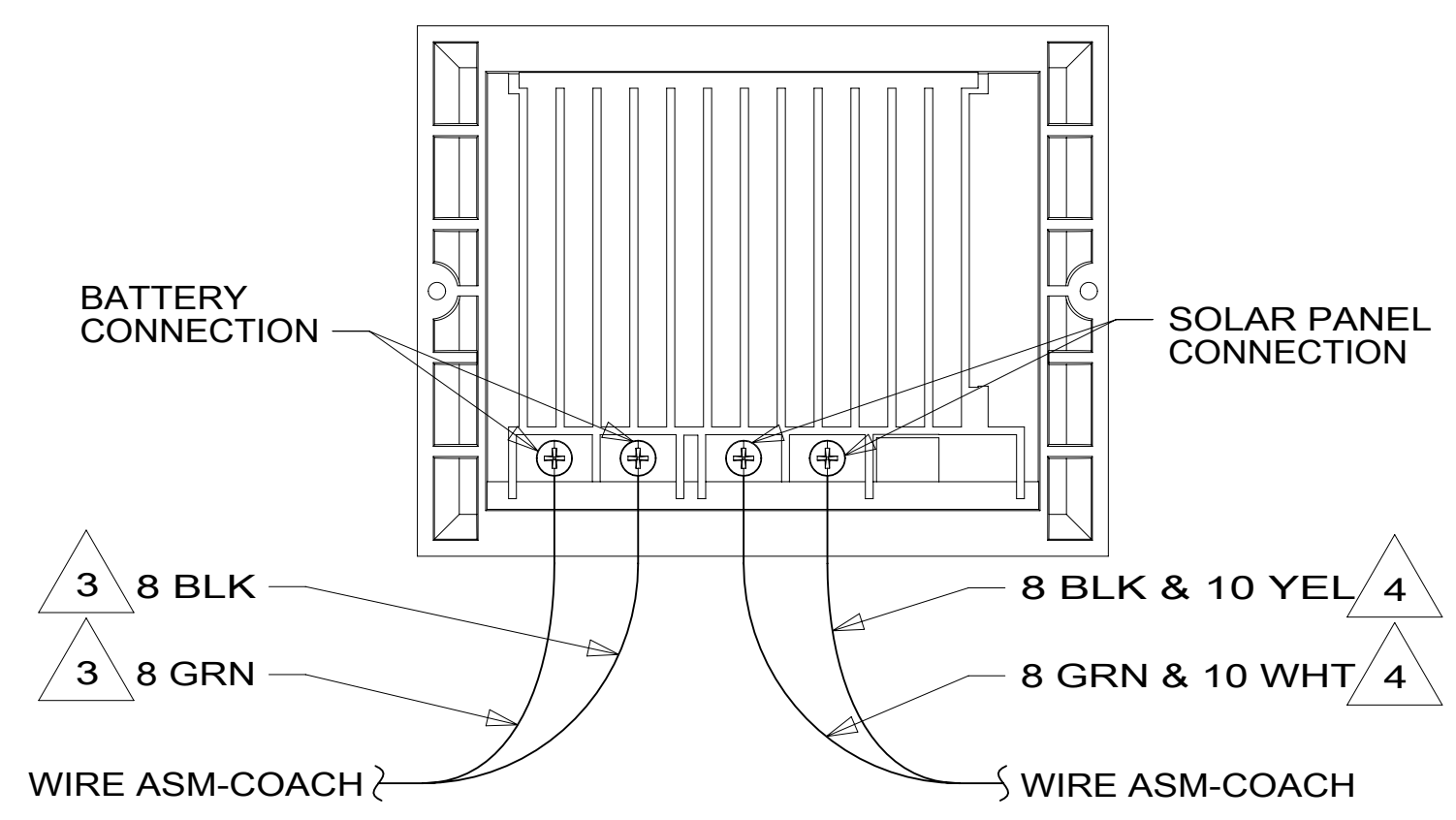
NOTES:
1 SUPPLIED WITH GENERATOR.

189793

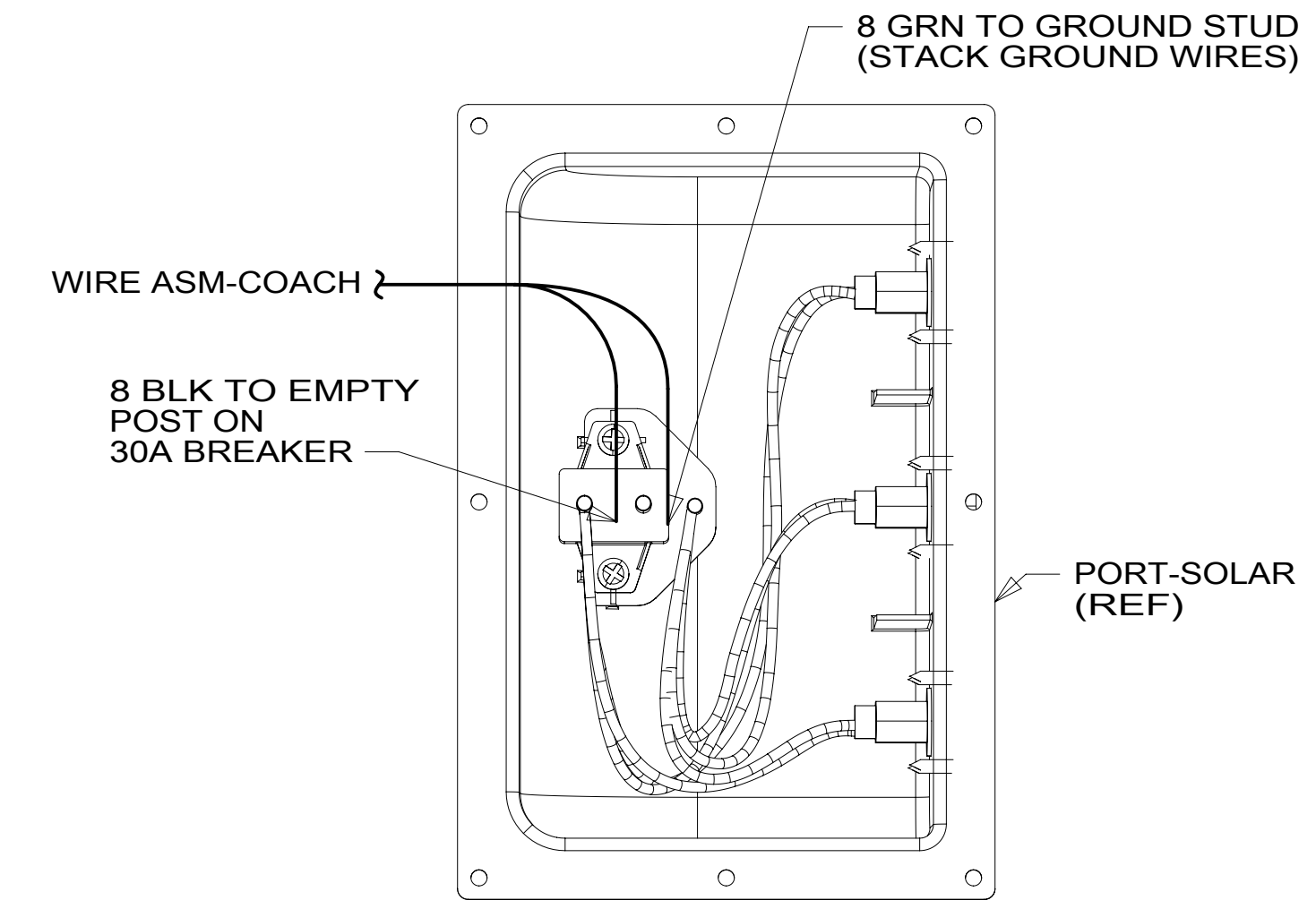
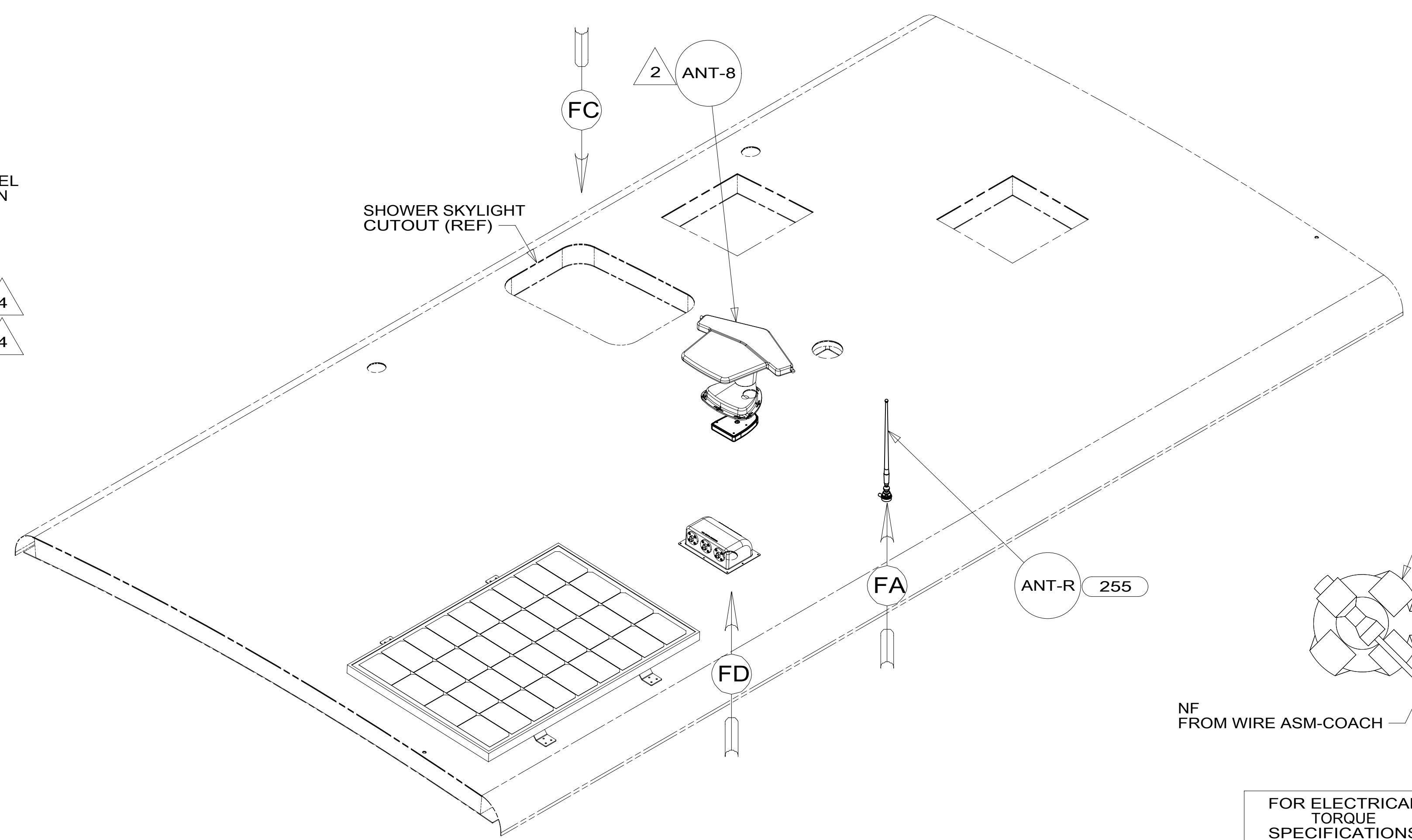


282 SOL-2
 282 PORT-SOLAR, 3 POSITION 191277-01-CHT
 DETAIL FD

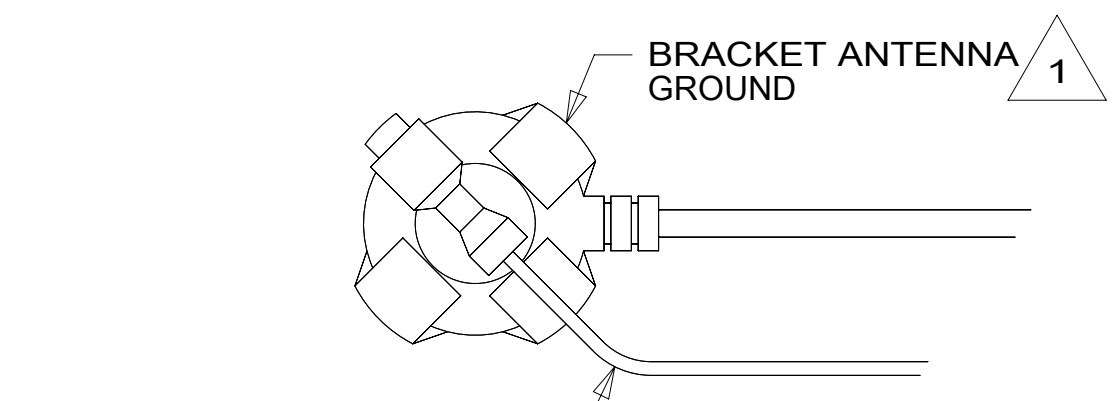
DETAIL FC



DETAIL FB 282



DETAIL FD 282



VIEW FA 255

- NOTES:
- 4 WIRE IS MARKED WITH YELLOW TAPE.
 - 3 WIRE IS MARKED WITH GOLD TAPE.
 - 2 SEE ANTENNA INSTALLATION MANUAL FOR CORRECT INSTALLATION PROCEDURE.
 - 1 WRAP BRACKET LEGS AROUND ANTENNA BASE.

FOR ELECTRICAL TORQUE SPECIFICATIONS SEE DWG NO. 128783-01-000

FOR ELECTRICAL CALLOUTS SEE DWG NO. 121339-01-000

- 282 SOLAR PANEL - 100 WATT
- 255 RADIO/AM/FM/CD/DVD, COACH
- 265 CODES/STANDARDS-CSA/CMVSS
- 1B1 CODES/STANDARDS USA

FIRST USED	
15 524G	
DO NOT SCALE DRAWING	
TITLE: WIRING INSTL-BODY, 12V	
SHEET 6	PART NO. 189793 REV
1 21-Aug-2015	

189793

6 PIN HSG TO SLIDEOUT MOTOR WITH PURPLE TAPE

6 PIN HSG TO SLIDEOUT MOTOR WITH BLUE TAPE

6 PIN HSG TO SLIDEOUT MOTOR WITH GREEN TAPE

6 PIN HSG TO SLIDEOUT MOTOR WITH YELLOW TAPE

WIRE ASM-SLIDEOUT MOTOR 181004-02-000

CLAMP 10495-01-000 (5)
SCREW G39-06-12U (5)

WIRE ROUTED BELOW FLOOR ASM-SLIDEOUT IN THIS AREA

WIRE ROUTED BELOW FLOOR ASM-SLIDEOUT IN THIS AREA

TO SLIDEOUT CONTROL

VIEW GA

WIRE ROUTED BELOW FLOOR ASM-SLIDEOUT IN THIS AREA

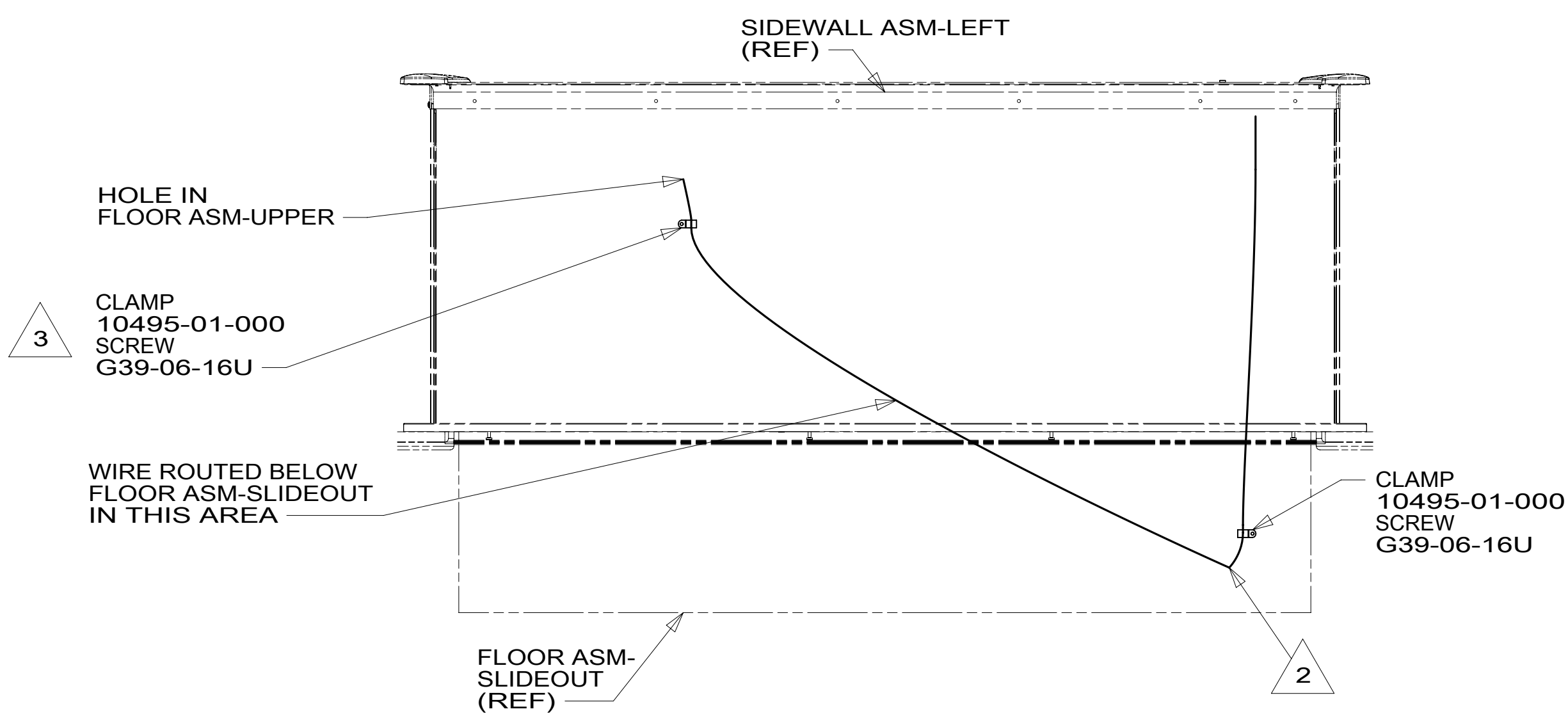
WIRE ASM-SLIDEOUT MOTOR (REFERENCE)

WIRE PASSES THROUGH FLOOR IN THIS AREA

WIRE ROUTED BELOW FLOOR ASM-SLIDEOUT IN THIS AREA

WIRE PASSES THROUGH FLOOR IN THIS AREA

VIEW GB



VIEW GC

- 3 CLAMP TO BE ATTACHED TO EDGE OF SLIDEOUT FLOOR.
- 2 WIRE PASSES THROUGH FLOOR IN THIS AREA.

1. AT MINIMUM ALL WIRES TO BE SUPPORTED AND SECURED PER CODE REQUIREMENTS. USE CLAMP 10495 OR 10497 OR WIRE TIE 8343 OR 108046 AND SCREW G67-XX-XXX OR G56-XX-XXX AS APPROPRIATE FOR INSTALLATION.

NOTES:

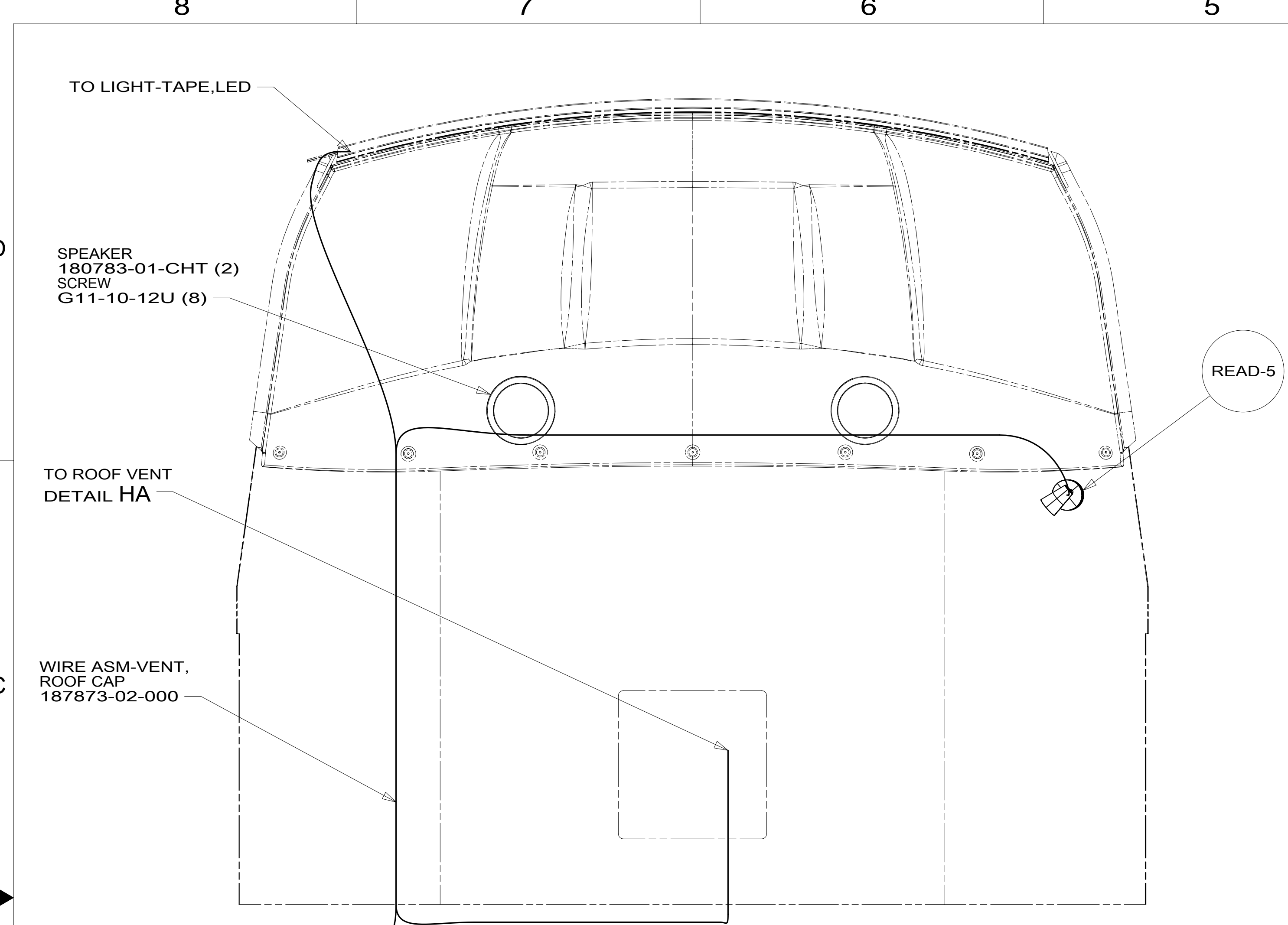
265	CODES/STANDARDS-CSA/CMVSS
1B1	CODES/STANDARDS USA
1B1	265

FOR ELECTRICAL TORQUE SPECIFICATIONS SEE DWG NO. 128783-01-000

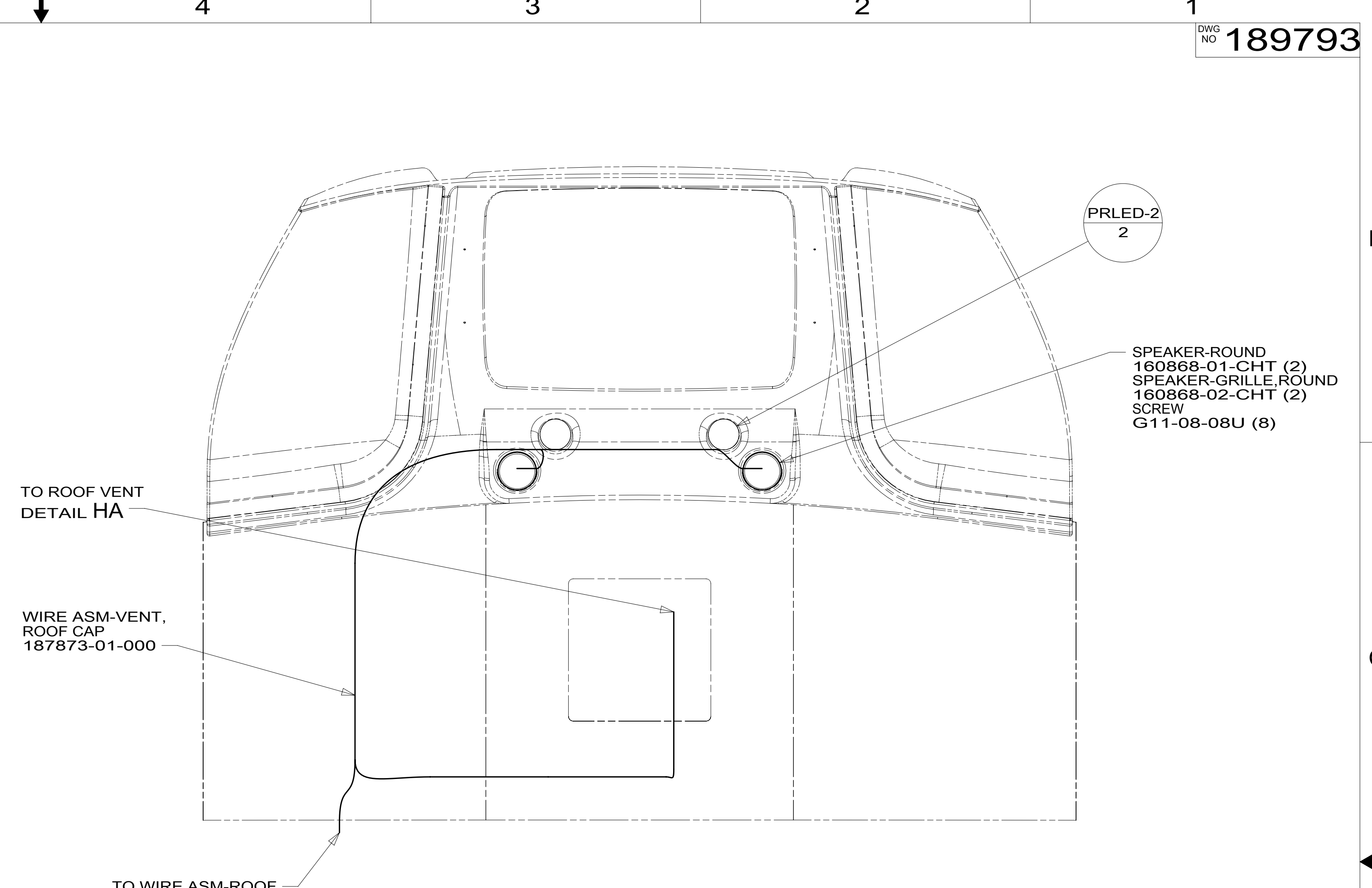
FOR ELECTRICAL CALLOUTS SEE DWG NO. 121339-01-000

FIRST USED		15 524G	
DO NOT SCALE DRAWING			
TITLE: WIRING INSTL-BODY, 12V			
SHEET 7	PART NO	189793	REV
		1	21-Aug-2015

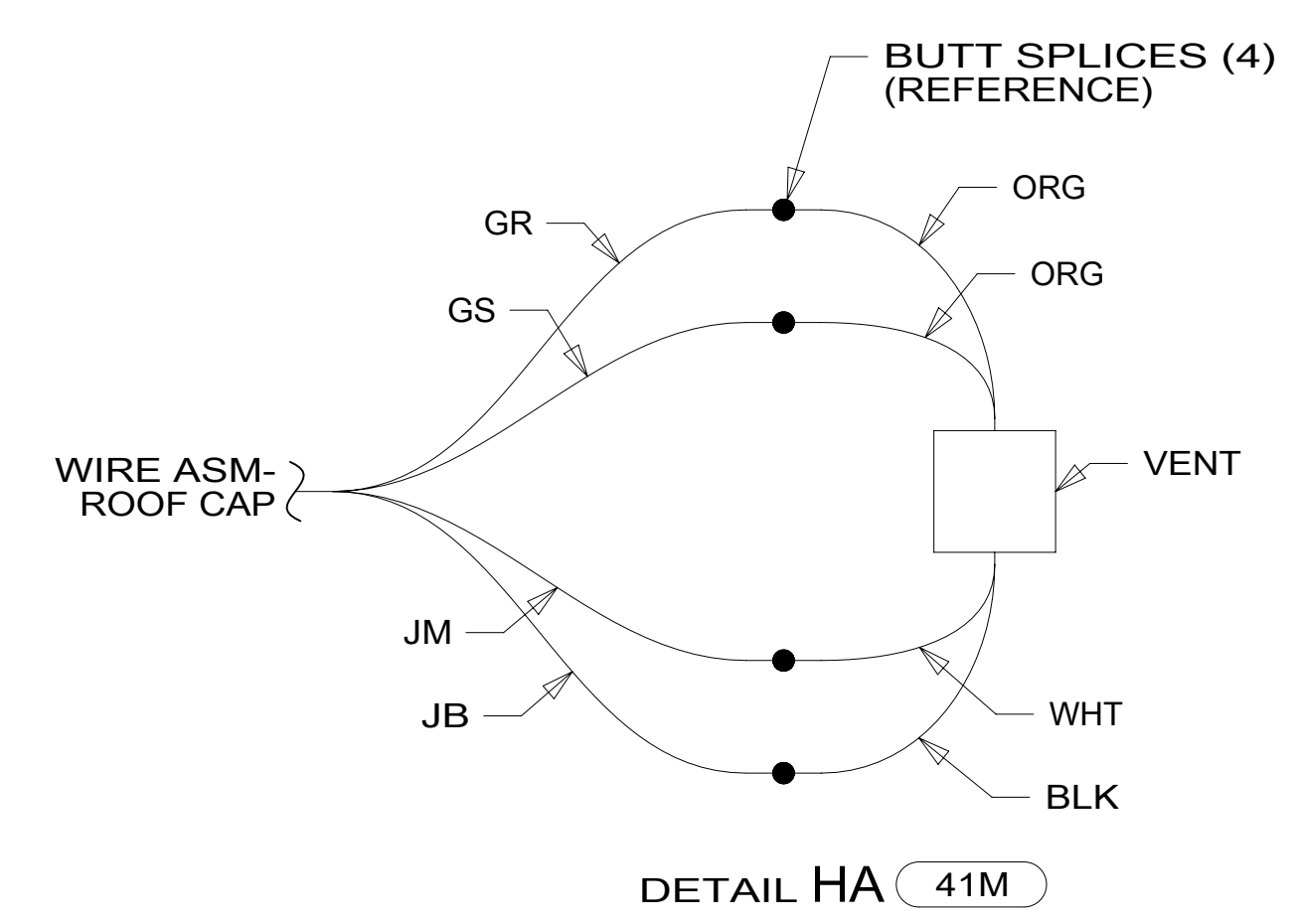
*189793*A



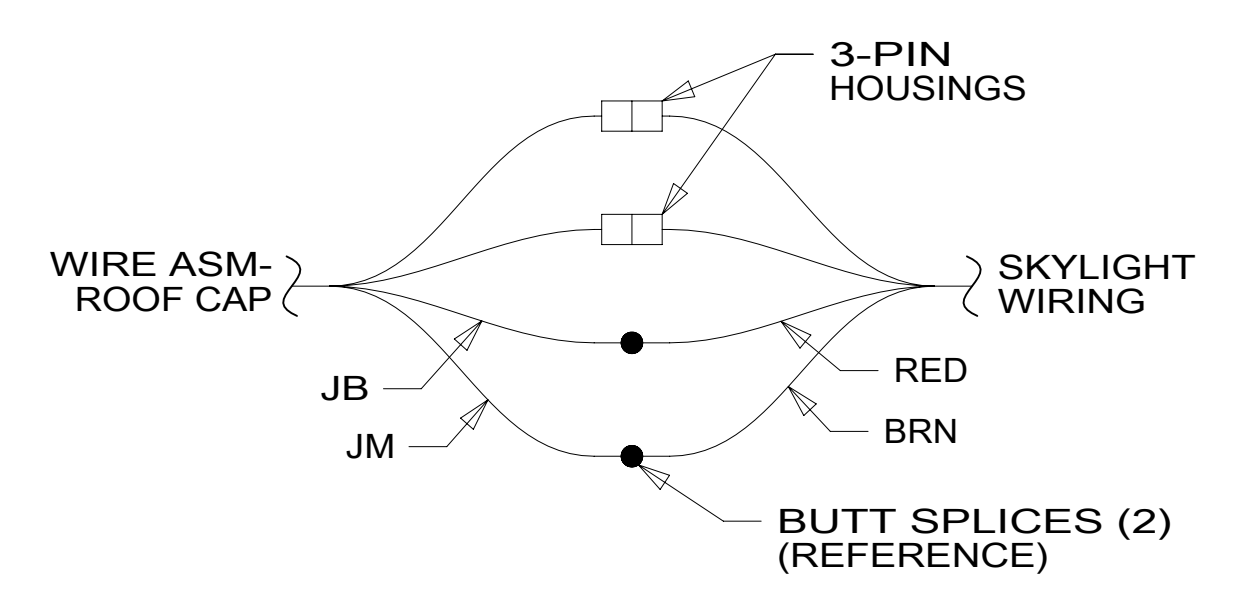
31T



31P



DETAIL HA 41M



DETAIL HA 316

- 31T FRONT CAP W/BED
- 31P FRONT CAP W/O BED
- 41M VENT-POWER VENTILATOR
- 316 SKYLIGHT/ROOF VENT, POWER
- 265 CODES/STANDARDS-CSA/CMVSS
- 1B1 CODES/STANDARDS USA

FIRST USED	15 524G	
DO NOT SCALE DRAWING		
TITLE:	WIRING INSTL-BODY, 12V	
SHEET 8	PART NO 189793	REV

FOR ELECTRICAL TORQUE SPECIFICATIONS SEE DWG NO. 128783-01-000

FOR ELECTRICAL CALLOUTS SEE DWG NO. 121339-01-000

189793