



**DANGER**

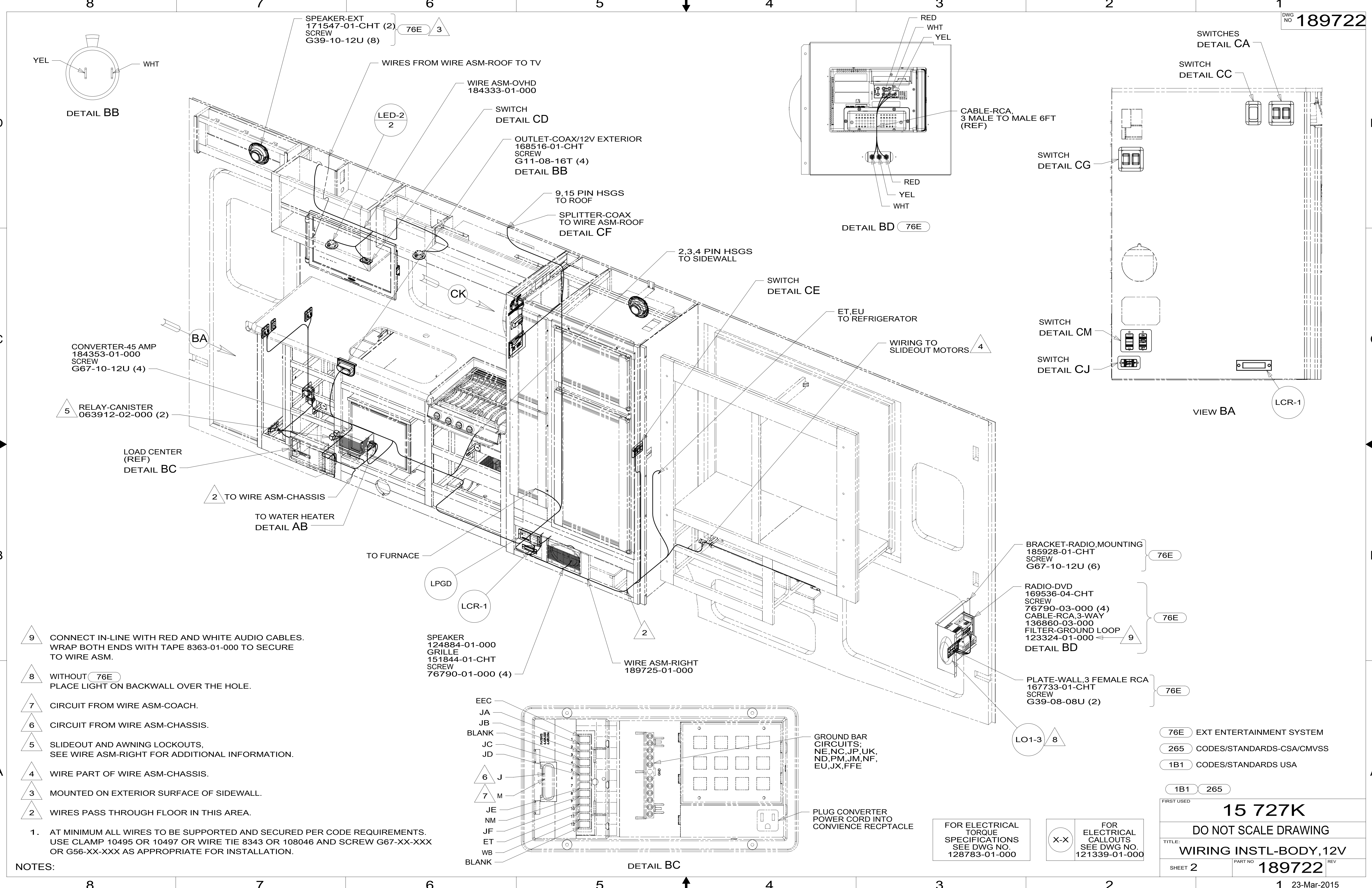
**Danger of electrical shock, burns or death.** Always remove all power sources before attempting any repair, service or diagnostic work. Power can be present from shore power, generator, inverter or battery. All power sources must be disabled and secured before performing any service.



**CAUTION**

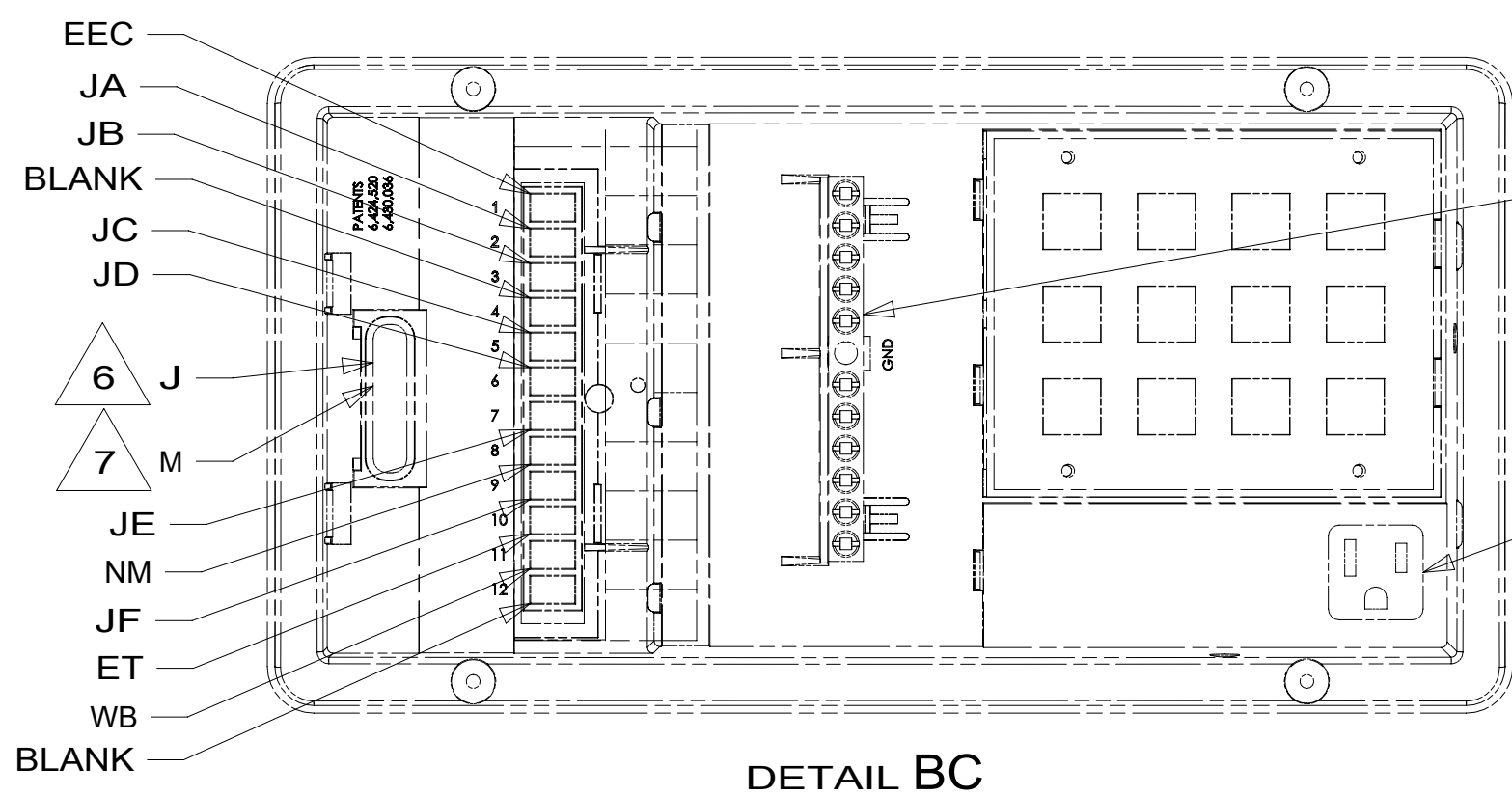
If you lack the skills, tools or equipment to perform diagnostic or repair work leave such work to an authorized Winnebago Industries dealer or other qualified shop.





- 9 CONNECT IN-LINE WITH RED AND WHITE AUDIO CABLES. WRAP BOTH ENDS WITH TAPE 8363-01-000 TO SECURE TO WIRE ASM.
- 8 WITHOUT 76E PLACE LIGHT ON BACKWALL OVER THE HOLE.
- 7 CIRCUIT FROM WIRE ASM-COACH.
- 6 CIRCUIT FROM WIRE ASM-CHASSIS.
- 5 SLIDEOUT AND AWNING LOCKOUTS. SEE WIRE ASM-RIGHT FOR ADDITIONAL INFORMATION.
- 4 WIRE PART OF WIRE ASM-CHASSIS.
- 3 MOUNTED ON EXTERIOR SURFACE OF SIDEWALL.
- 2 WIRES PASS THROUGH FLOOR IN THIS AREA.

1. AT MINIMUM ALL WIRES TO BE SUPPORTED AND SECURED PER CODE REQUIREMENTS. USE CLAMP 10495 OR 10497 OR WIRE TIE 8343 OR 108046 AND SCREW G67-XX-XXX OR G56-XX-XXX AS APPROPRIATE FOR INSTALLATION.



GROUND BAR CIRCUITS: NE,NC,JP,UK, ND,PM,JM,NF, EU,JX,FFE

PLUG CONVERTER POWER CORD INTO CONVIENCE RECPTACLE

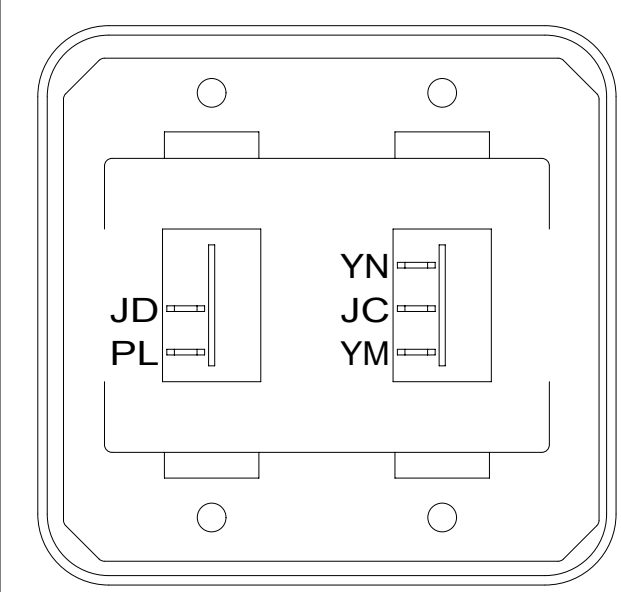
FOR ELECTRICAL TORQUE SPECIFICATIONS SEE DWG NO. 128783-01-000

FOR ELECTRICAL CALLOUTS SEE DWG NO. 121339-01-000

- 76E EXT ENTERTAINMENT SYSTEM
- 265 CODES/STANDARDS-CSA/CMVSS
- 1B1 CODES/STANDARDS USA

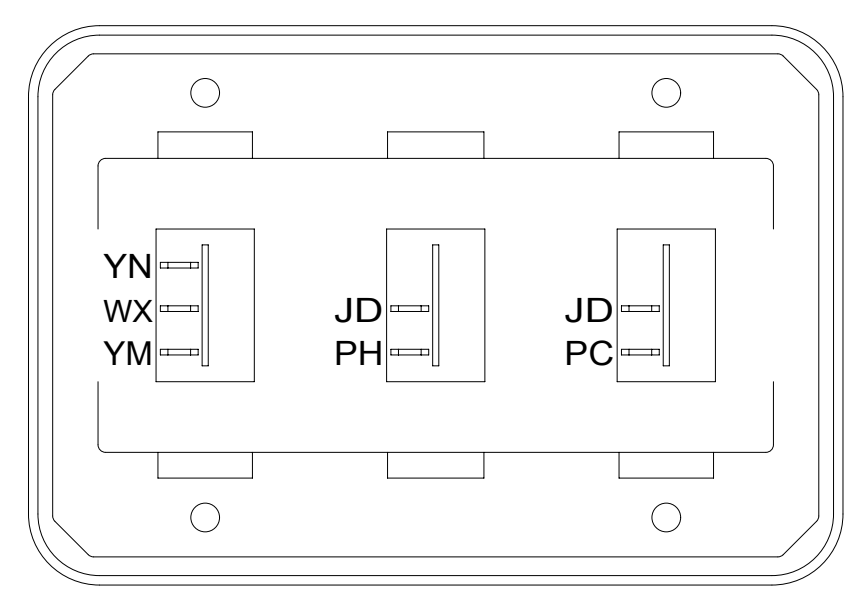
FIRST USED		<b>15 727K</b>	
<b>DO NOT SCALE DRAWING</b>			
<b>WIRING INSTL-BODY, 12V</b>			
SHEET 2	PART NO	189722	REV
			1 23-Mar-2015

\*189722\*



SWITCH-ROCKER  
135740-01-CHT  
135740-02-CHT  
SWITCH-BASE  
135741-02-CHT  
SWITCH-BEZEL  
135742-02-CHT  
SCREW  
G11-08-08U (4)

DETAIL CA

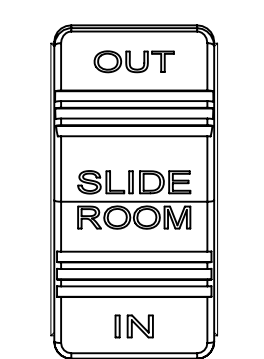


SWITCH-ROCKER  
135740-01-CHT (2)  
135740-02-CHT  
SWITCH-BASE  
135741-03-CHT  
SWITCH-BEZEL  
135742-03-CHT  
SCREW  
G11-08-08U (4)

DETAIL CE

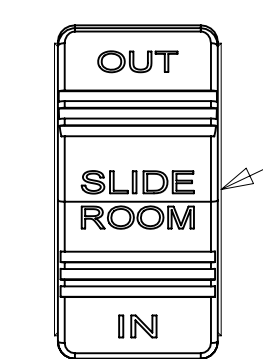
LABEL-SLIDEOUT, PASS, REAR  
163992-03-CHT

PASSENGER'S  
SIDE REAR



LABEL-SLIDEOUT, DRIVER, FRONT  
163992-01-CHT

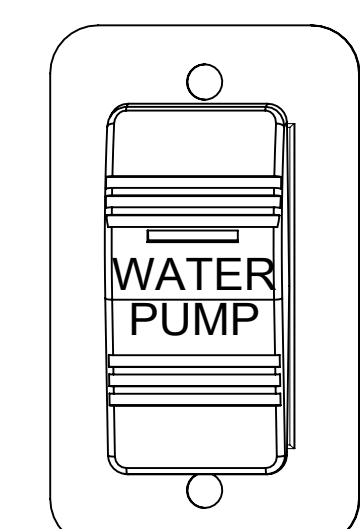
DRIVER'S  
SIDE FRONT



SWITCH  
108357-07-000 (2)  
ACTUATOR  
108356-24-CHT (2)

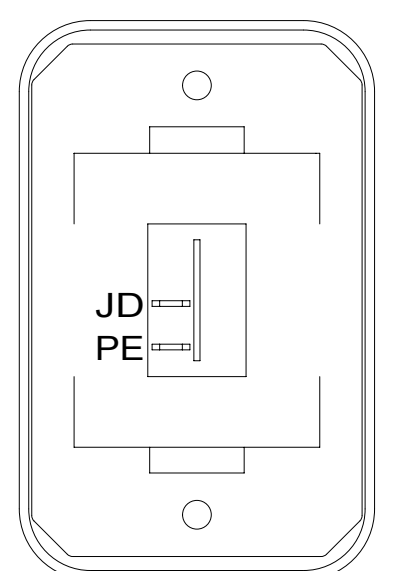
WARNING CRUSH HAZARD. Keep people and objects clear of the inside and the outside of the slideout room when operating. Failure to comply could result in death or serious injury.

LABEL-WARNING  
116549-01-000



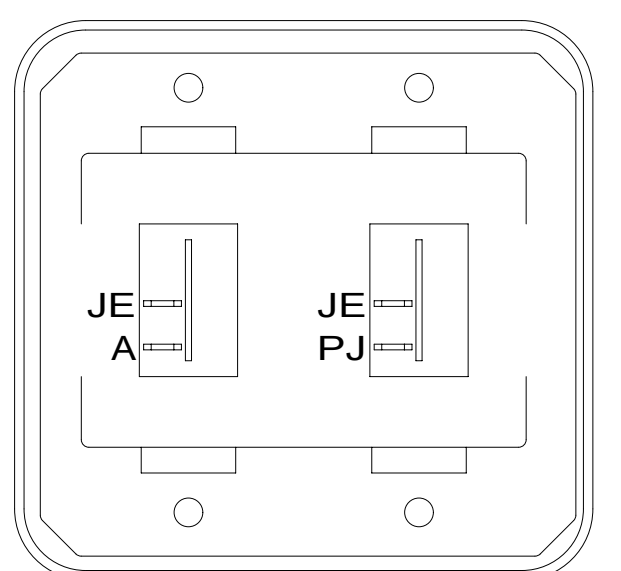
SWITCH-PUMP  
108357-21-000  
ACTUATOR  
108356-23-CHT  
PLATE  
098351-07-CHT  
SCREW  
G11-06-10U (2)

DETAIL CL



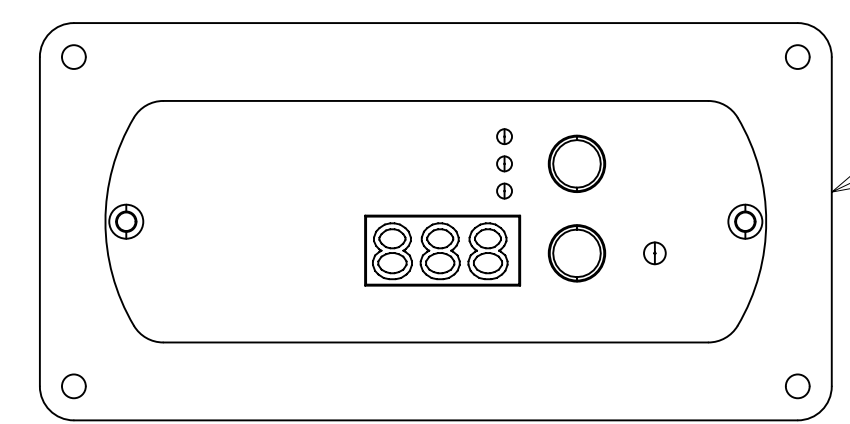
SWITCH-ROCKER  
135740-01-CHT  
SWITCH-BASE  
135741-01-CHT  
SWITCH-BEZEL  
135742-01-CHT  
SCREW  
G11-08-08U (2)

DETAIL CB

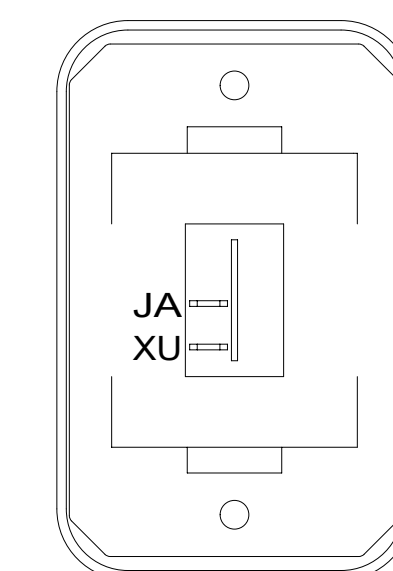


SWITCH-ROCKER  
135740-01-CHT (2)  
SWITCH-BASE  
135741-02-CHT  
SWITCH-BEZEL  
135742-02-CHT  
SCREW  
G11-08-08U (4)

DETAIL CG

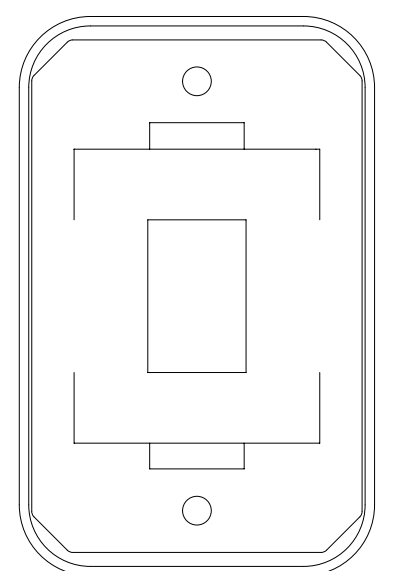


REMOTE PANEL-INVERTER  
(SUPPLIED WITH INVERTER)  
MODULE-12V DISC  
173355-01-000 401



SWITCH-ROCKER  
135740-01-CHT  
SWITCH-BASE  
135741-01-CHT  
SWITCH-BEZEL  
135742-01-CHT  
SCREW  
G11-08-08U (2)

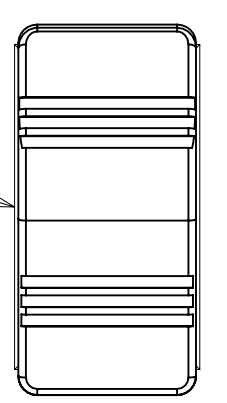
DETAIL CN



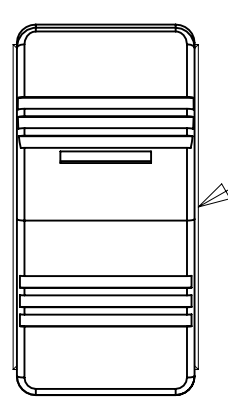
SWITCH-BLANK  
138253-01-CHT  
SWITCH-BASE  
135741-01-CHT  
SWITCH-BEZEL  
135742-01-CHT  
SCREW  
G11-08-08U (2)

DETAIL CC

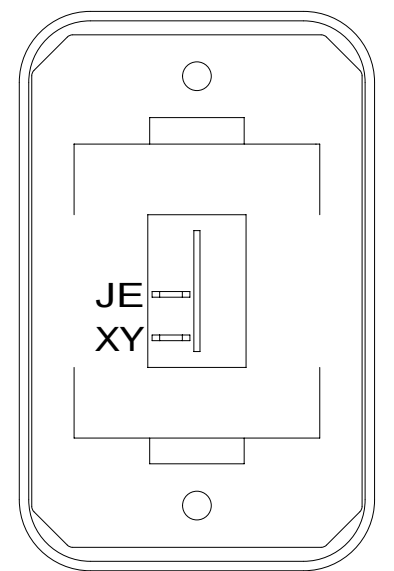
SWITCH-DRAIN PUMP  
108357-09-000  
ACTUATOR  
108356-01-CHT



SWITCH-PUMP  
108357-21-000  
ACTUATOR  
108356-03-CHT



DETAIL CH



SWITCH-ROCKER  
135740-01-CHT  
SWITCH-BASE  
135741-01-CHT  
SWITCH-BEZEL  
135742-01-CHT  
SCREW  
G11-08-08U (2)

DETAIL CD

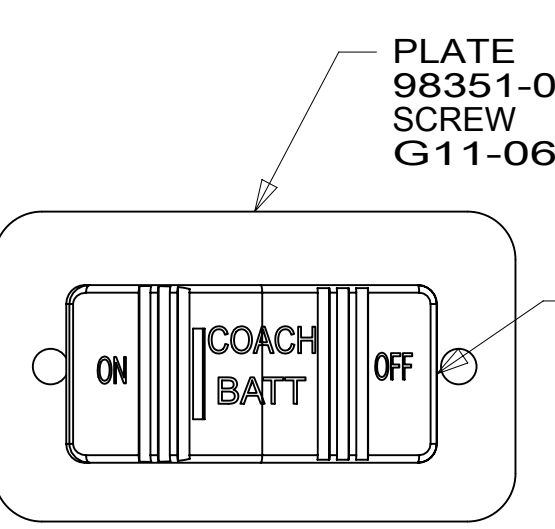
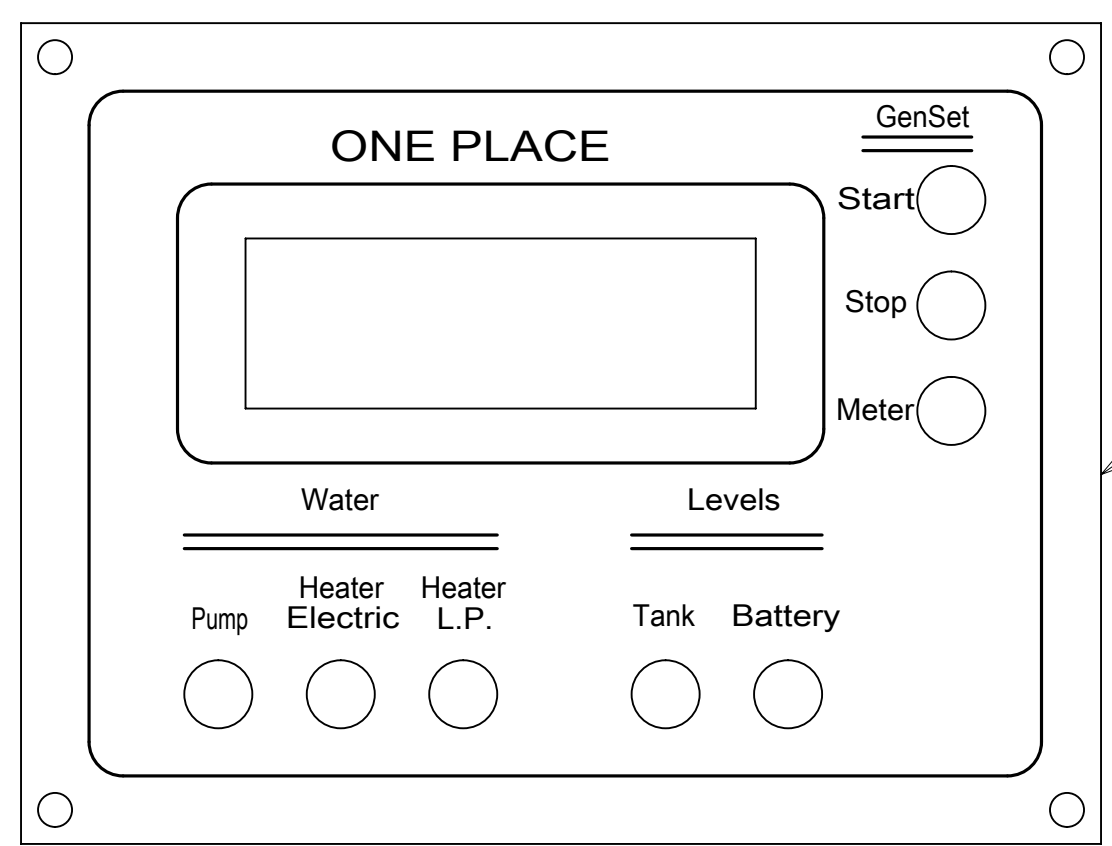


PLATE  
98351-07-CHT  
SCREW  
G11-06-10U (4)

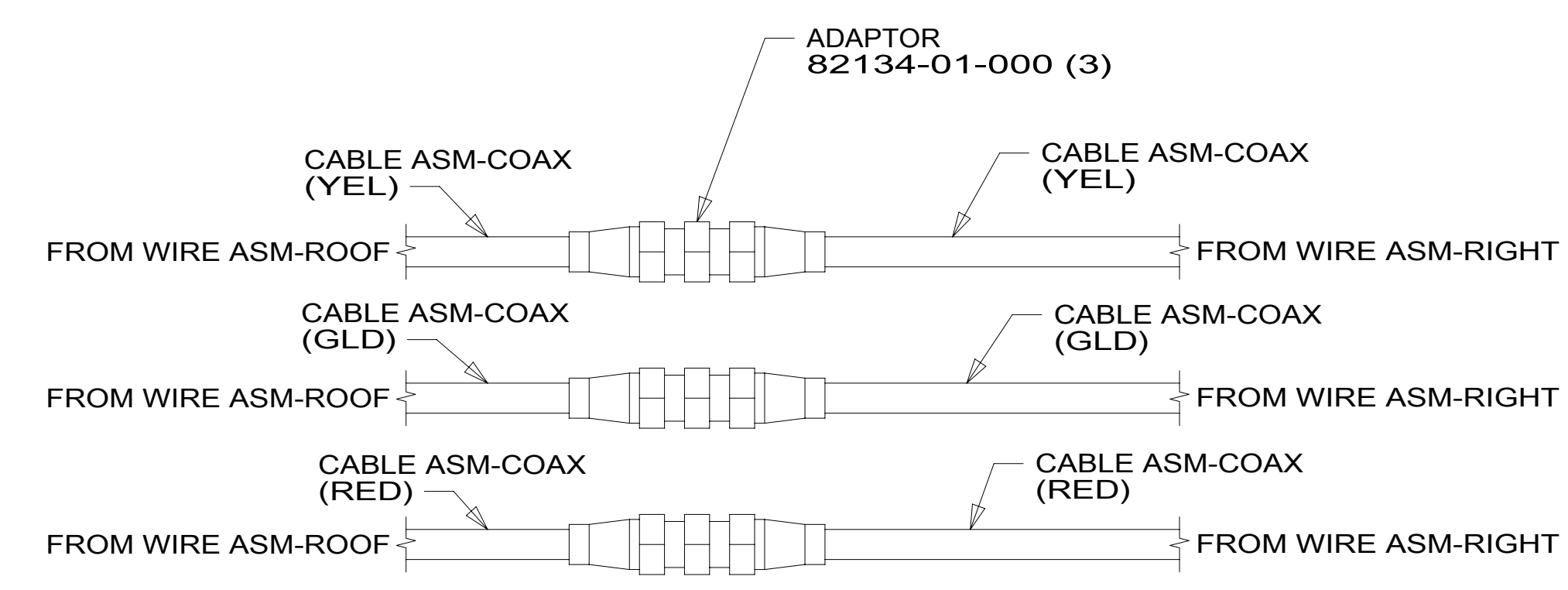
SWITCH-BATTERY  
108357-18-000  
ACTUATOR  
108356-19-CHT  
CIRCUITS LH, LJ,  
LG, JP, JA  
WIRE ASM-THERMISTOR  
186796-01-000

DETAIL CJ



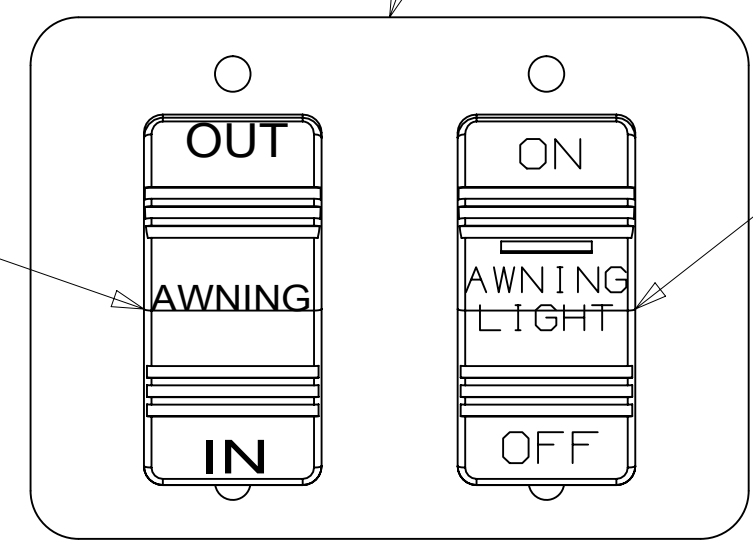
VIEW CK

PANEL-MONITOR, LCD  
175724-01-000 53B  
175724-04-000 1BT  
SCREW  
G11-08-12U (4)



DETAIL CF

SWITCH-ROCKER  
108357-06-000  
ACTUATOR-SWITCH  
108356-12-CHT



DETAIL CM

PLATE-SWITCH  
158431-17-CHT  
SCREW  
G11-06-10U (4)

SWITCH-ROCKER  
108357-14-000  
ACTUATOR-SWITCH  
108356-28-CHT

FOR ELECTRICAL  
TORQUE  
SPECIFICATIONS  
SEE DWG NO.  
128783-01-000

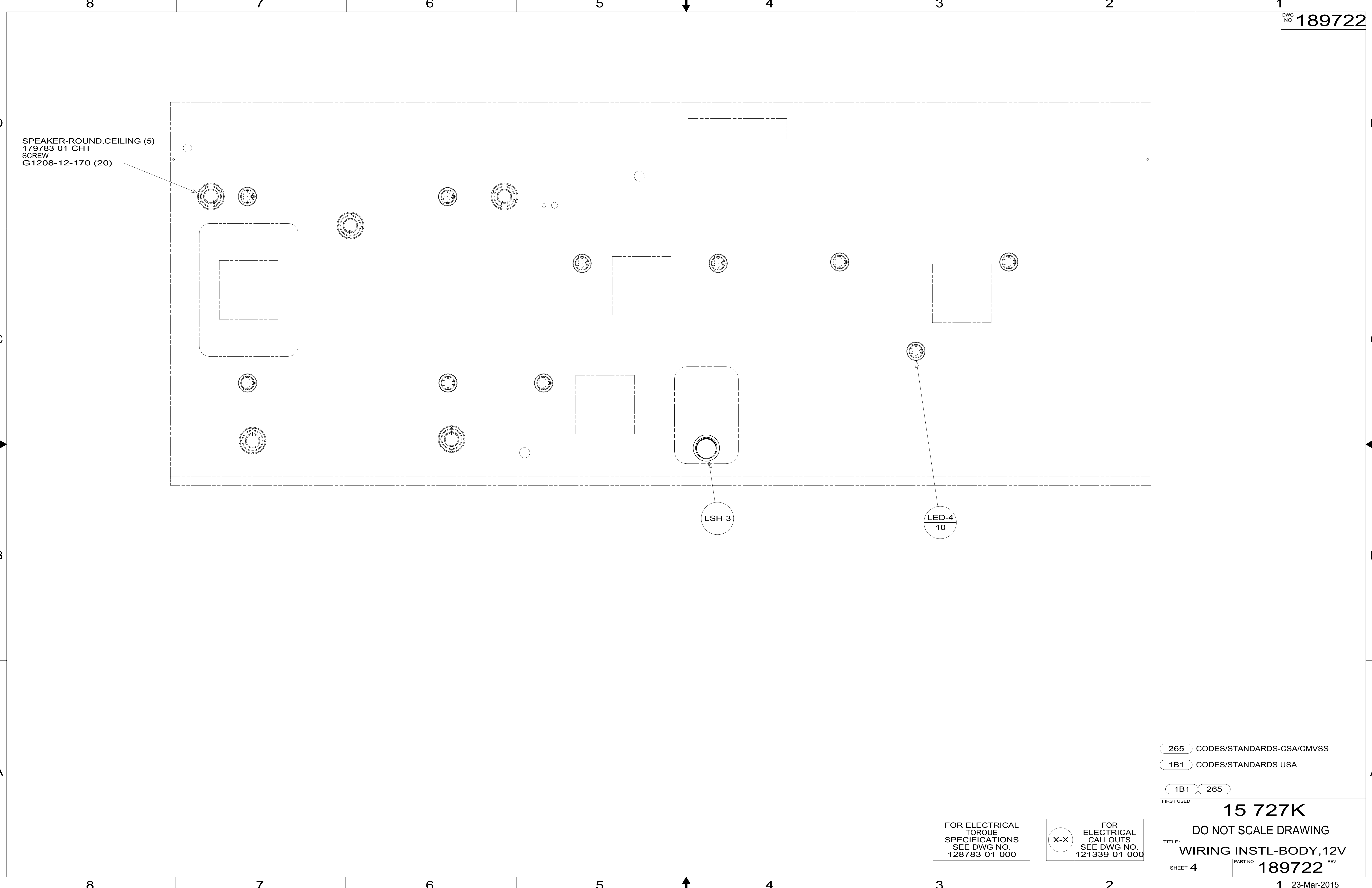
FOR  
ELECTRICAL  
CALLOUTS  
SEE DWG NO.  
121339-01-000

- 53B WTR HTR-6GAL ELECTRIC/LP GAS
- 1BT WATER HEATER, TANKLESS
- 401 INVERTER-DC/AC, 1000 WATT
- 265 CODES/STANDARDS-CSA/CMVSS
- 1B1 CODES/STANDARDS USA

1B1	265
FIRST USED	
<b>15 727K</b>	
DO NOT SCALE DRAWING	
TITLE: <b>WIRING INSTL-BODY, 12V</b>	
SHEET 3	PART NO <b>189722</b> REV
1 23-Mar-2015	

\*189722\*





SPEAKER-ROUND,CEILING (5)  
 179783-01-CHT  
 SCREW  
 G1208-12-170 (20)

LSH-3

LED-4  
 10

265 CODES/STANDARDS-CSA/CMVSS

1B1 CODES/STANDARDS USA

1B1 265

FIRST USED  
**15 727K**

DO NOT SCALE DRAWING

TITLE: **WIRING INSTL-BODY, 12V**

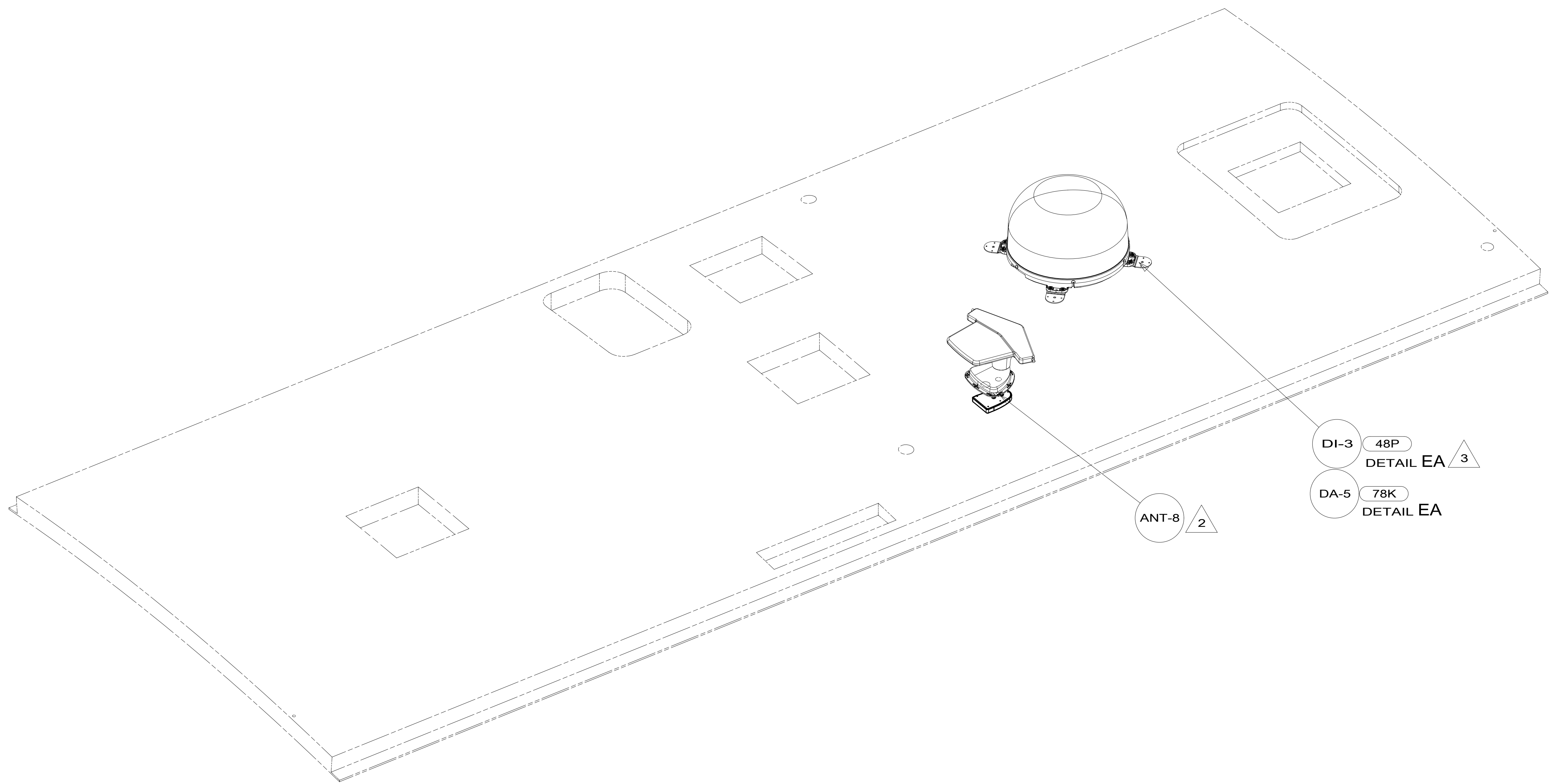
SHEET 4 PART NO **189722** REV

FOR ELECTRICAL  
 TORQUE  
 SPECIFICATIONS  
 SEE DWG NO.  
 128783-01-000

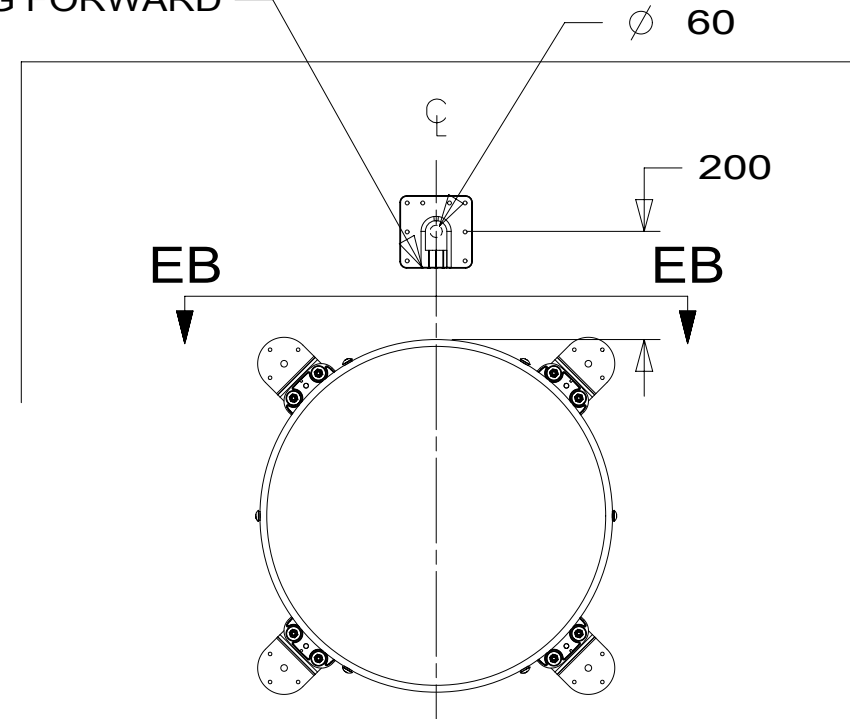
FOR  
 ELECTRICAL  
 CALLOUTS  
 SEE DWG NO.  
 121339-01-000

X-X

\*189722 \*A



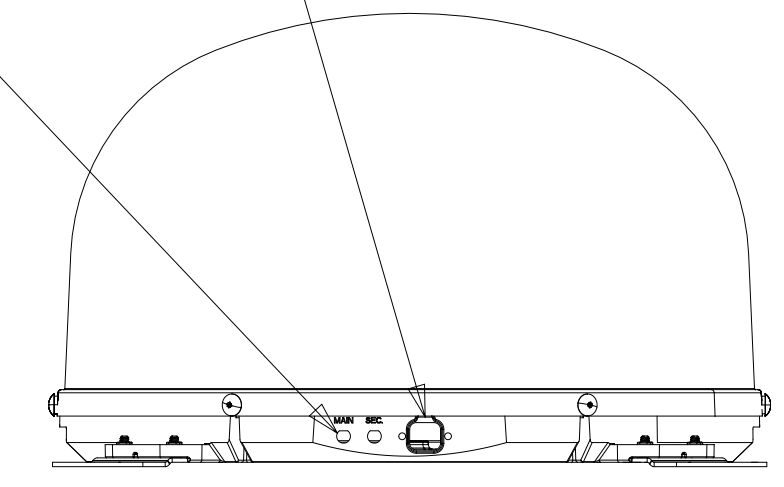
THE SATELLITE DISH WIRE CONNECTIONS ARE TO BE PLACED ON THE CENTERLINE OF THE MOTORHOME FACING FORWARD



DETAIL EA 1

CONNECT 2-PIN HOUSING FROM ROOF ASM TO SATELLITE DISH HERE AND ADD CONVOLUTED TUBING

CONNECT CABLE ASM COAX (ORG) FROM ROOF ASM TO MAIN INPUT ON SATELLITE DISH



VIEW EB-EB

FOR ELECTRICAL TORQUE SPECIFICATIONS SEE DWG NO. 128783-01-000

FOR ELECTRICAL CALLOUTS SEE DWG NO. 121339-01-000

- 48P SAT TV SYSTEM IN-MOTION
- 78K SATELLITE TV SYSTEM AUTO
- 265 CODES/STANDARDS-CSA/CMVSS
- 1B1 CODES/STANDARDS USA

FIRST USED	<b>15 727K</b>	
<b>DO NOT SCALE DRAWING</b>		
<b>TITLE: WIRING INSTL-BODY, 12V</b>		
SHEET 5	PART NO <b>189722</b>	REV

- NOTES:
- 3 ADD CABLE-COAX 163598-04-000 AND ADAPTER-COAX 82134-01-000 TO ORG COAX TO MAKE CONNECTION WATER TIGHT.
  - 2 SEE ANTENNA INSTALLATION MANUAL FOR CORRECT INSTALLATION PROCEDURE.
  - 1 REMOVE ALL SHIPPING RESTRAINTS AND FIRMLY INSERT THE SUPPLIED PLUGS INTO THE APPROPRIATE SIZED HOLES AS SPECIFIED IN THE INSTALLATION PROCESS.

\*189722 \*A