



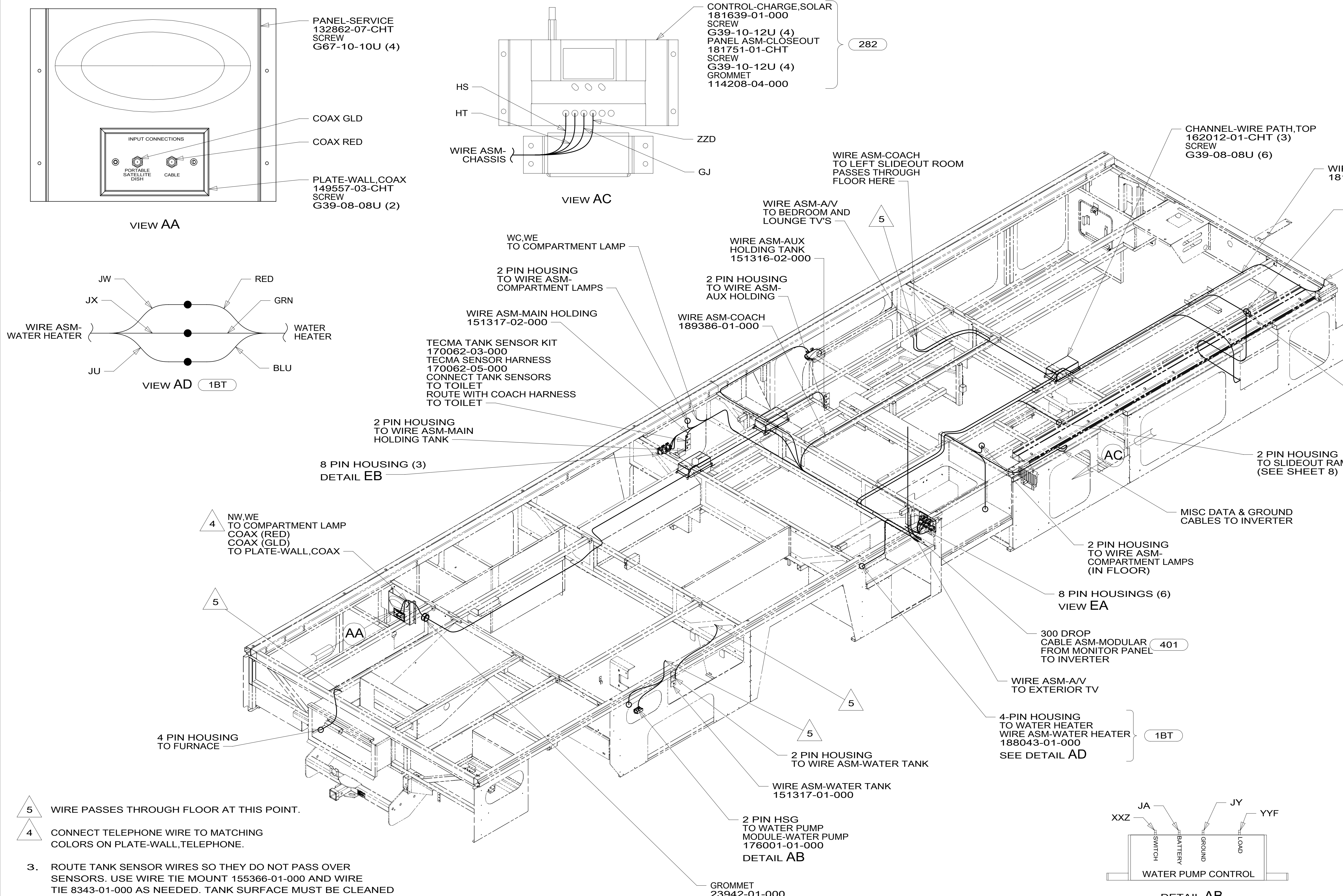
DANGER

Danger of electrical shock, burns or death. Always remove all power sources before attempting any repair, service or diagnostic work. Power can be present from shore power, generator, inverter or battery. All power sources must be disabled and secured before performing any service.



CAUTION

If you lack the skills, tools or equipment to perform diagnostic or repair work leave such work to an authorized Winnebago Industries dealer or other qualified shop.



- NOTES:**
1. ALL WIRES TO BE CLAMPED WITH CLAMP 10495-01-000 OR WIRE TIE 8343-02-000 EVERY 600MM UNLESS OTHERWISE SPECIFIED.
 2. SEE WIRING DIAGRAM-BODY,12V FOR ADDITIONAL INFORMATION.
 3. ROUTE TANK SENSOR WIRES SO THEY DO NOT PASS OVER SENSORS. USE WIRE TIE MOUNT 155366-01-000 AND WIRE TIE 8343-01-000 AS NEEDED. TANK SURFACE MUST BE CLEANED USING ISOPROPYL ALCOHOL AND PRIME WITH PRIMER 94.

- 1BT WATER HEATER, TANKLESS
- 282 SOLAR PANEL - 100 WATT
- 401 INVERTER-DC/AC, 1000 WATT
- 265 CODES/STANDARDS-CSA/CMVSS
- 1B1 CODES/STANDARDS USA

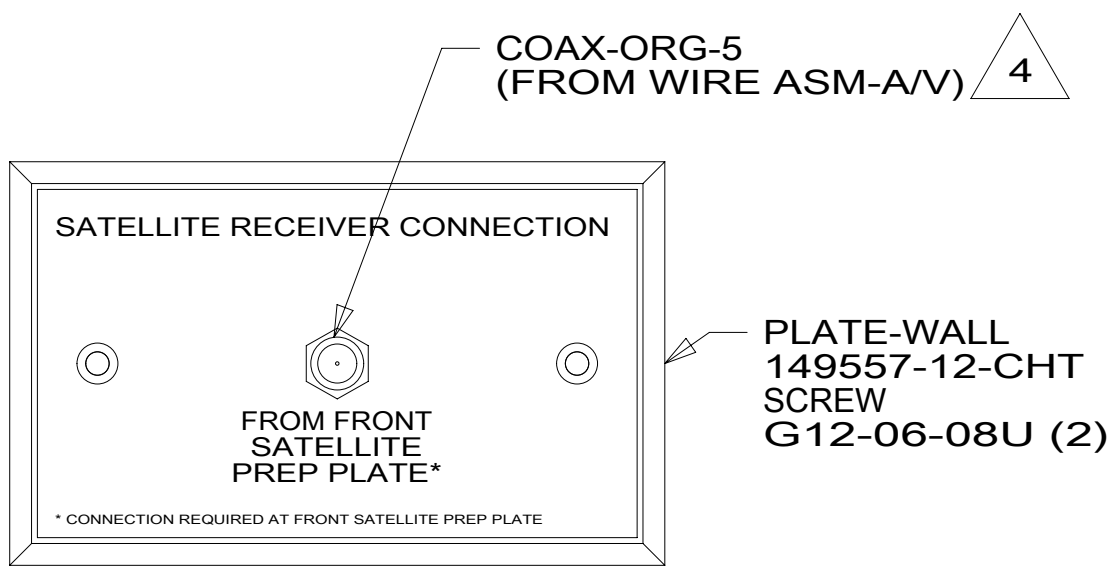
WINNEBAGO COPYRIGHT 2014 WINNEBAGO INDUSTRIES, INC.

DTR	ORIG. DATE
CHR	ALL DIMENSIONS ARE IN MILLIMETERS
P.E.	FIRST USED
M.E.	15 J37F
DSNR	MATERIAL:
UNSPECIFIED TOLERANCES ARE:	
WHOLE DIM (X)	: 3
ONE-PLACE (X.X)	: 1.5
TWO-PLACE (X.XX)	: 0.50
ANGLE	: 1°
THIRD ANGLE PROJECTION	
DO NOT SCALE DRAWING	REFER TO ES0018 FOR FASTENER TIGHTENING GUIDELINES
TITLE:	WIRING INSTL-BODY, 12V
SHEET 1 OF 9	PART NO 189383 REV
REF:	1 13-May-2015

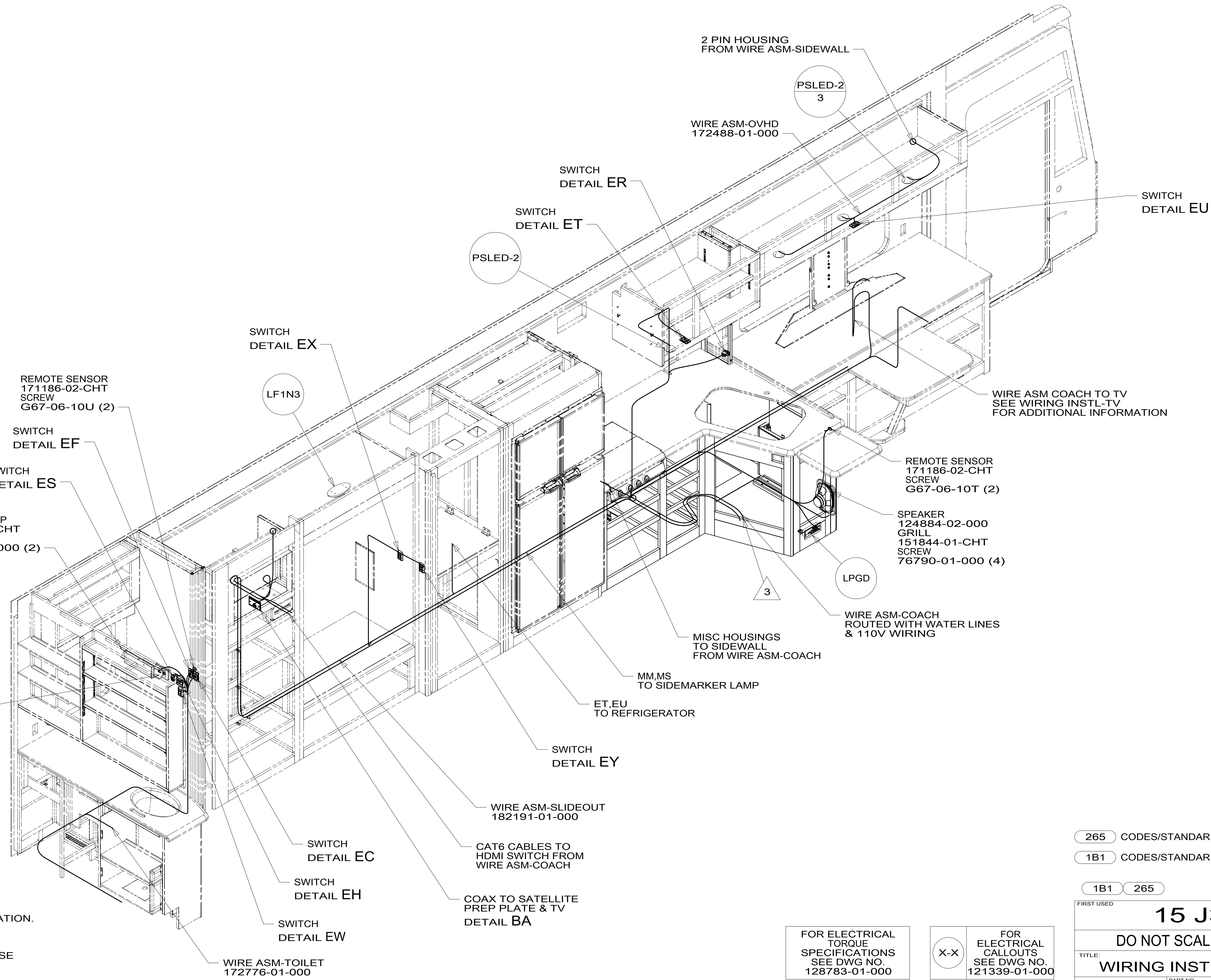
FOR ELECTRICAL TORQUE SPECIFICATIONS SEE DWG NO. 128783-01-000

FOR ELECTRICAL CALLOUTS SEE DWG NO. 121339-01-000

189383



DETAIL BA



- NOTES:
- 4 CONNECTS TO REAR OF SATELLITE PREP PLATE.
 - 3 WIRE PASSES THROUGH FLOOR AT THIS POINT.
 - 2. SEE WIRING DIAGRAM-BODY, 12V FOR ADDITIONAL INFORMATION.
 - 1. ALL WIRES TO BE CLAMPED WITH CLAMP 10495-01-000 OR WIRE TIE 8343-02-000 EVERY 600MM UNLESS OTHERWISE SPECIFIED.

265	CODES/STANDARDS-CSA/CMVSS
1B1	CODES/STANDARDS USA
1B1	265

FOR ELECTRICAL TORQUE SPECIFICATIONS SEE DWG NO. 128783-01-000

FOR ELECTRICAL CALLOUTS SEE DWG NO. 121339-01-000

FIRST USED

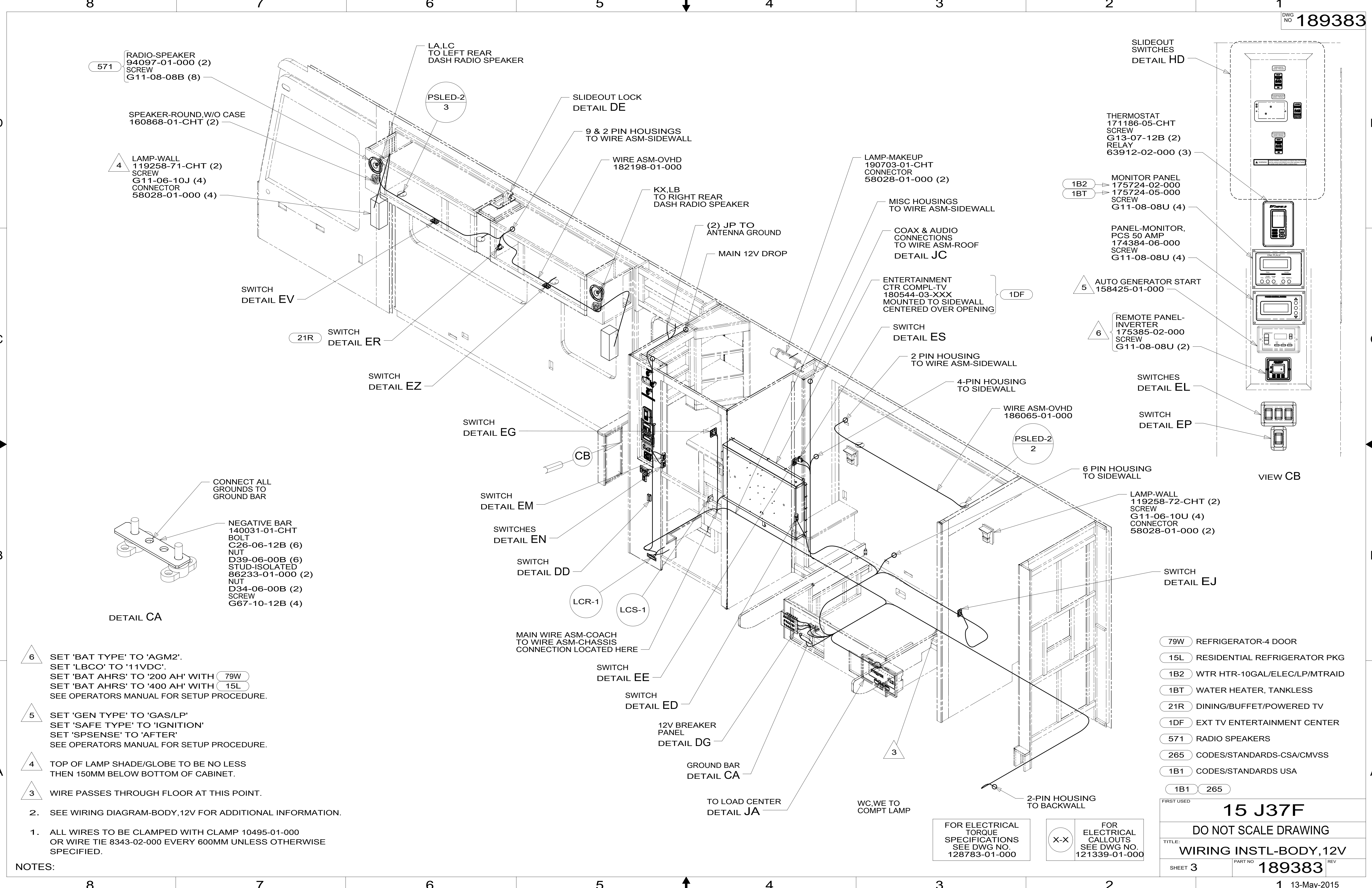
15 J37F

DO NOT SCALE DRAWING

TITLE: **WIRING INSTL-BODY, 12V**

SHEET 2 PART NO **189383** REV

189383



- NOTES:**
- 1. ALL WIRES TO BE CLAMPED WITH CLAMP 10495-01-000 OR WIRE TIE 8343-02-000 EVERY 600MM UNLESS OTHERWISE SPECIFIED.
 - 2. SEE WIRING DIAGRAM-BODY, 12V FOR ADDITIONAL INFORMATION.
 - 3. WIRE PASSES THROUGH FLOOR AT THIS POINT.
 - 4. TOP OF LAMP SHADE/GLOBE TO BE NO LESS THEN 150MM BELOW BOTTOM OF CABINET.
 - 5. SET 'GEN TYPE' TO 'GAS/LP' SET 'SAFE TYPE' TO 'IGNITION' SET 'SPSENSE' TO 'AFTER' SEE OPERATORS MANUAL FOR SETUP PROCEDURE.
 - 6. SET 'BAT TYPE' TO 'AGM2'. SET 'LBCO' TO '11VDC'. SET 'BAT AHRS' TO '200 AH' WITH **79W** SET 'BAT AHRS' TO '400 AH' WITH **15L** SEE OPERATORS MANUAL FOR SETUP PROCEDURE.

FOR ELECTRICAL TORQUE SPECIFICATIONS SEE DWG NO. 128783-01-000

X-X

FOR ELECTRICAL CALLOUTS SEE DWG NO. 121339-01-000

- 79W** REFRIGERATOR-4 DOOR
- 15L** RESIDENTIAL REFRIGERATOR PKG
- 1B2** WTR HTR-10GAL/ELEC/LP/MTRAITD
- 1BT** WATER HEATER, TANKLESS
- 21R** DINING/BUFFET/POWERED TV
- 1DF** EXT TV ENTERTAINMENT CENTER
- 571** RADIO SPEAKERS
- 265** CODES/STANDARDS-CSA/CMVSS
- 1B1** CODES/STANDARDS USA
- 1B1** **265**

FIRST USED

15 J37F

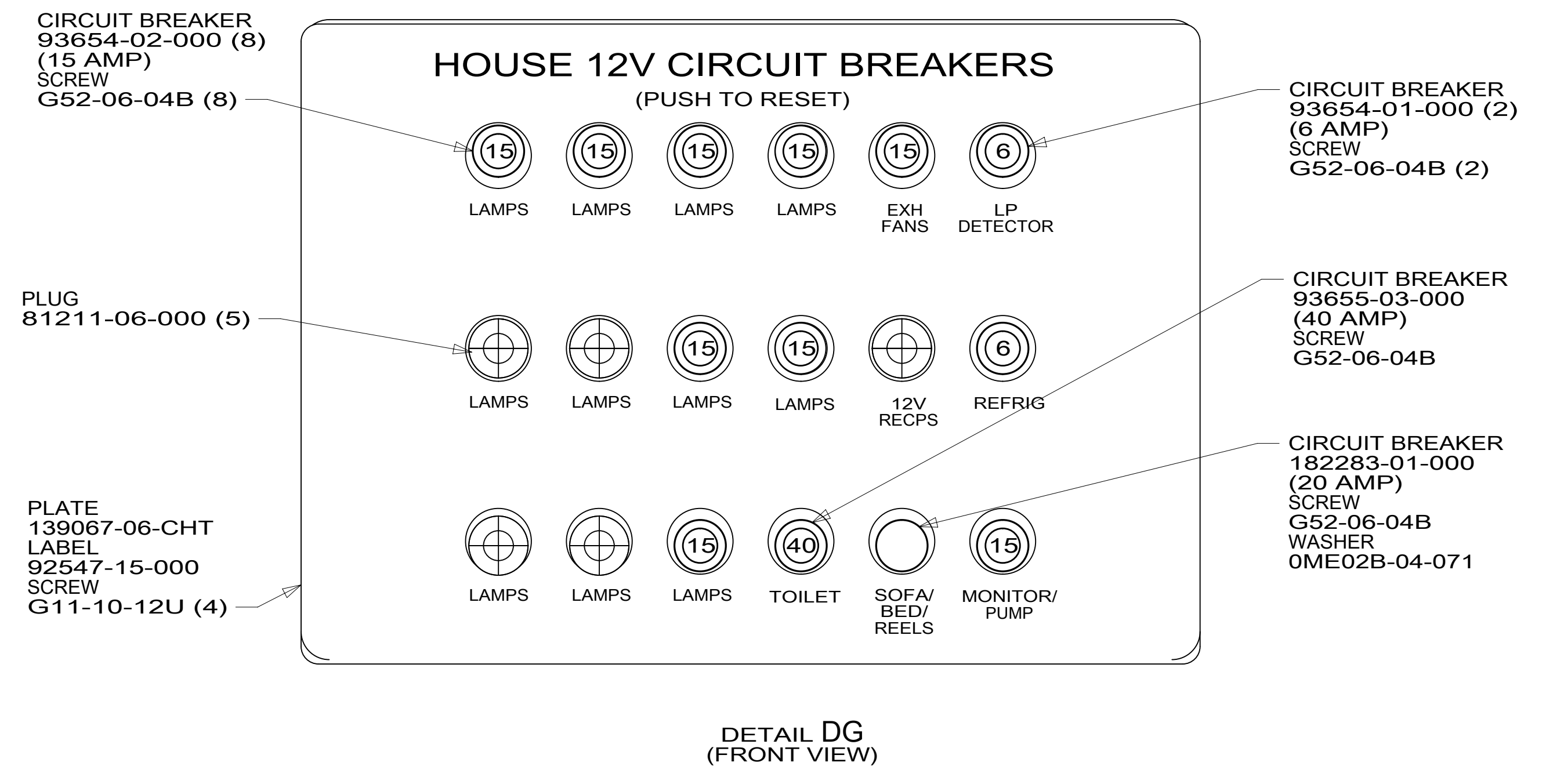
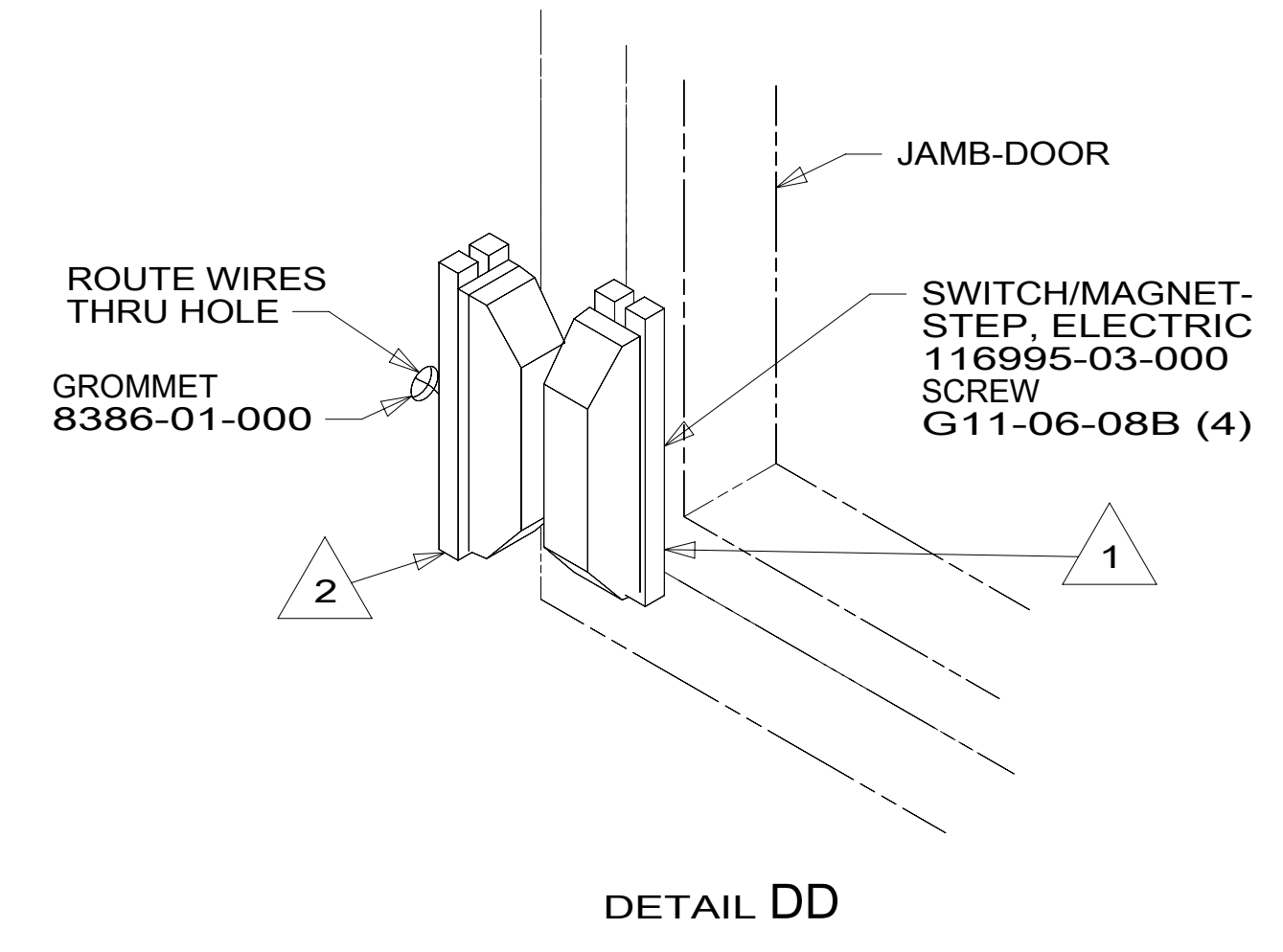
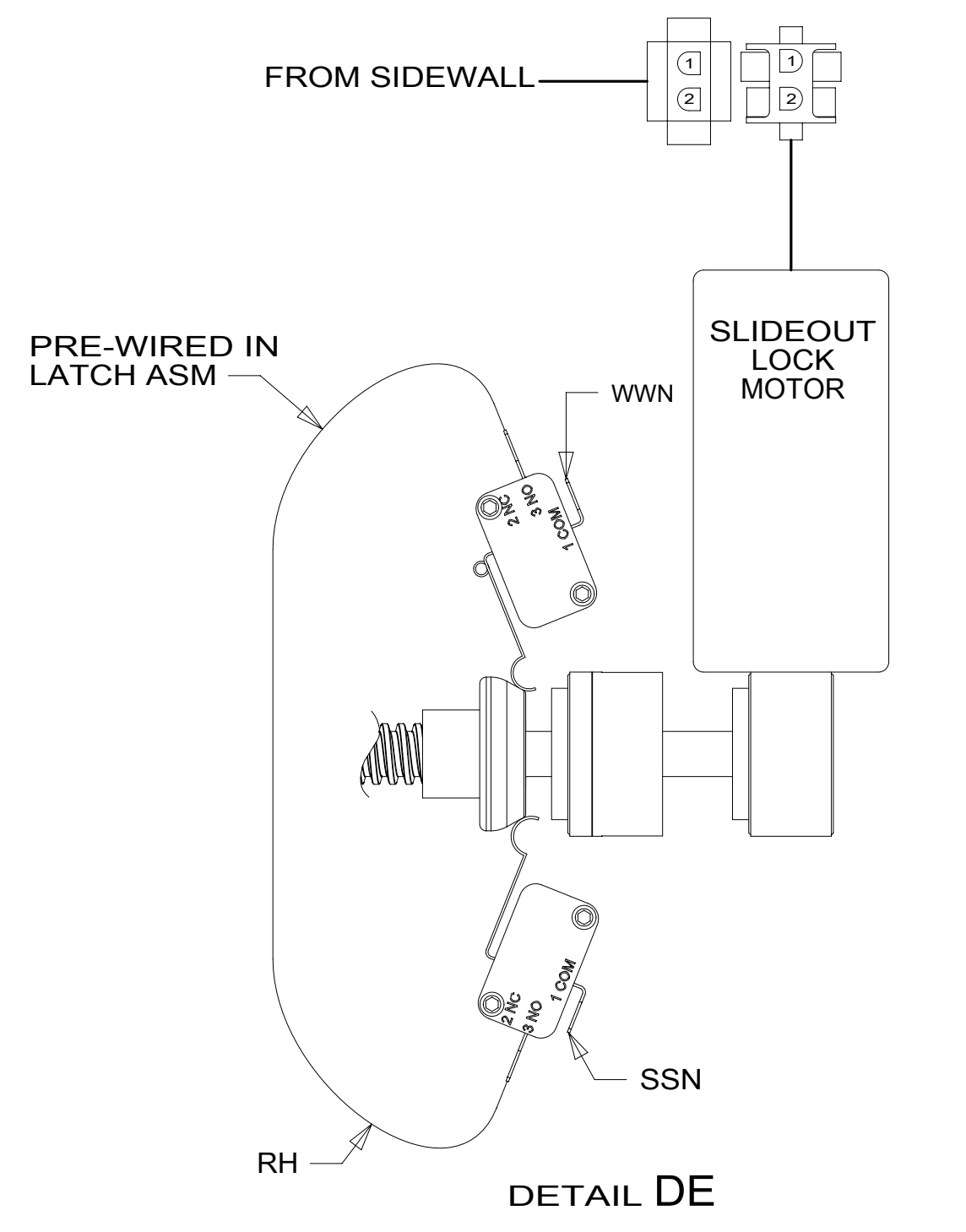
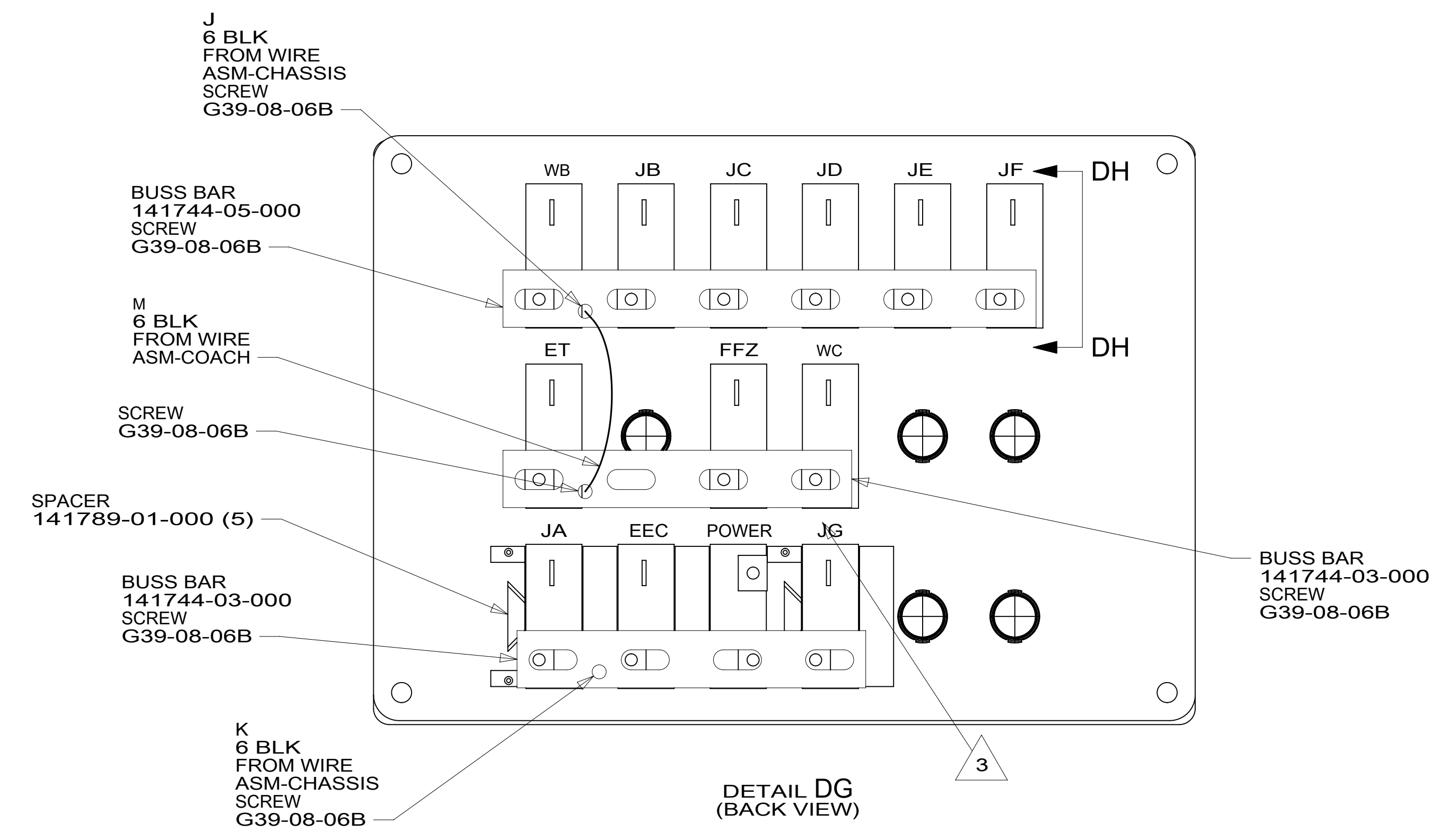
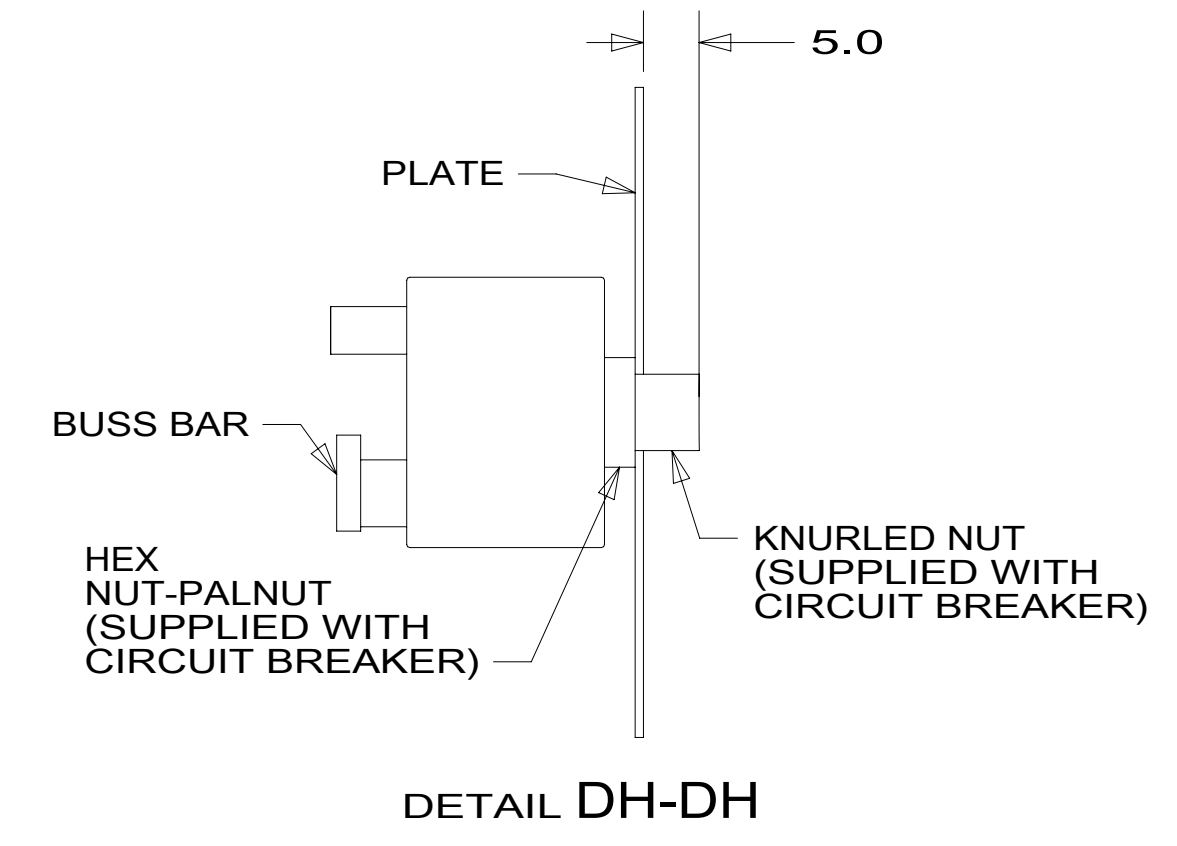
DO NOT SCALE DRAWING

TITLE: **WIRING INSTL-BODY, 12V**

SHEET **3** PART NO **189383** REV

1 13-May-2015

189383



- NOTES:
- 3 CIRCUIT IS MARKED WITH YELLOW TAPE.
 - 2 MOUNT SWITCH AND SPACER TO BLOCK ON JAMB ADJUST HEIGHT TO MATCH MAGNET.
 - 1 MOUNT MAGNET USING PILOT HOLES IN SCREEN DOOR FRAME. MOUNT WITH MAGNET TOWARD SWITCH.

FOR ELECTRICAL TORQUE SPECIFICATIONS SEE DWG NO. 128783-01-000

FOR ELECTRICAL CALLOUTS SEE DWG NO. 121339-01-000

265 CODES/STANDARDS-CSA/CMVSS
1B1 CODES/STANDARDS USA

1B1 265

FIRST USED

15 J37F

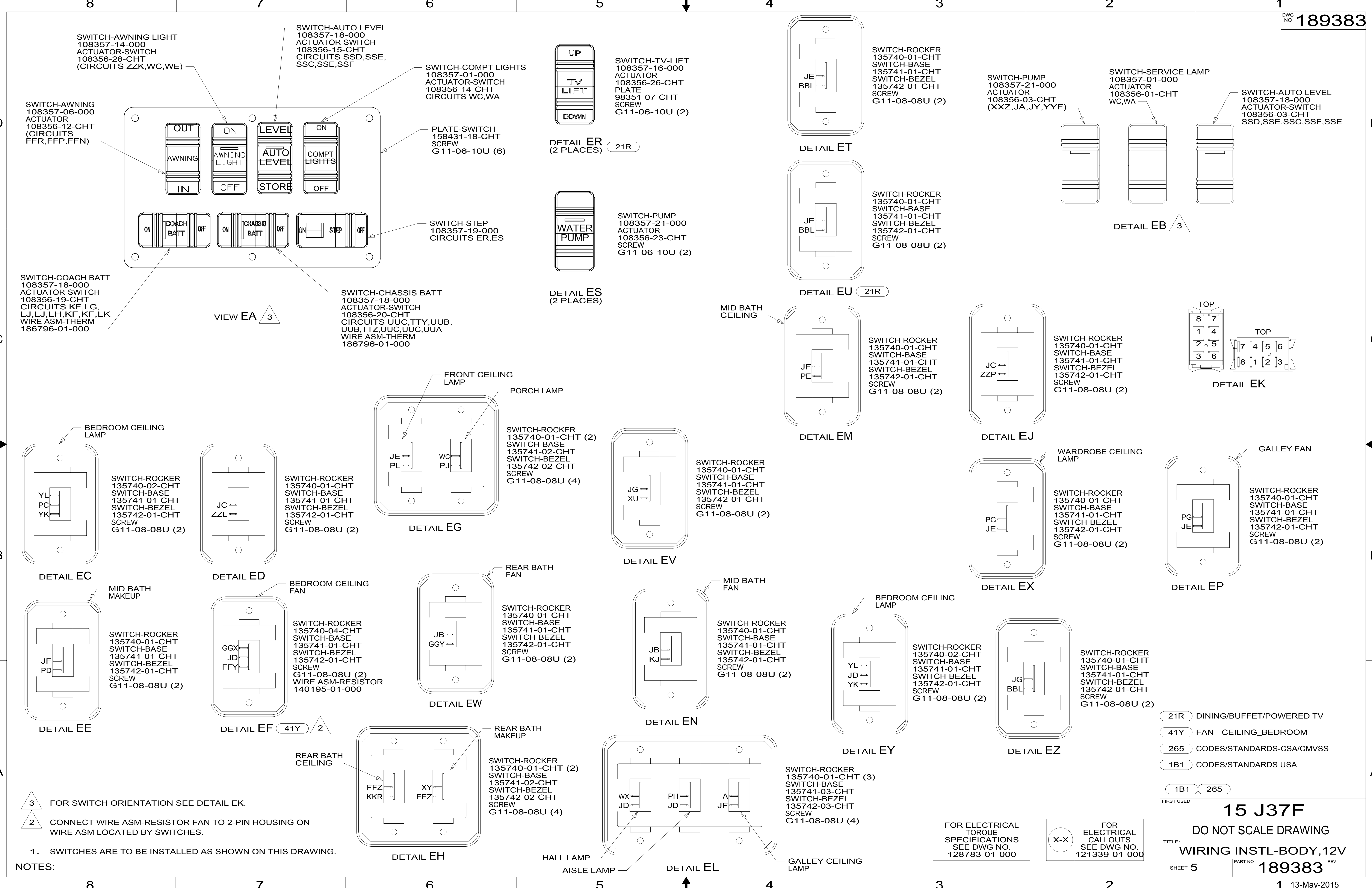
DO NOT SCALE DRAWING

TITLE: **WIRING INSTL-BODY, 12V**

SHEET 4 PART NO **189383** REV

13-May-2015

189383



8
7
6
5
4
3
2
1

D
C
B
A

3 FOR SWITCH ORIENTATION SEE DETAIL EK.
 2 CONNECT WIRE ASM-RESISTOR FAN TO 2-PIN HOUSING ON WIRE ASM LOCATED BY SWITCHES.
 1. SWITCHES ARE TO BE INSTALLED AS SHOWN ON THIS DRAWING.

NOTES:

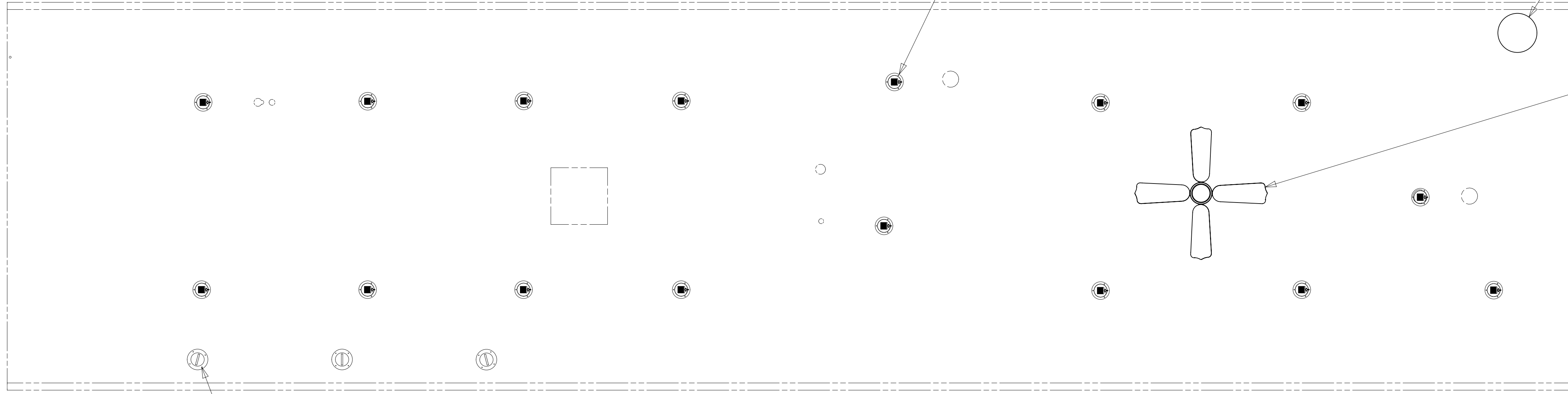
- 21R DINING/BUFFET/POWERED TV
- 41Y FAN - CEILING_BEDROOM
- 265 CODES/STANDARDS-CSA/CMVSS
- 1B1 CODES/STANDARDS USA

FIRST USED		15 J37F	
DO NOT SCALE DRAWING			
WIRING INSTL-BODY, 12V			
SHEET 5	PART NO	189383	
		REV	
		13-May-2015	

FOR ELECTRICAL TORQUE SPECIFICATIONS SEE DWG NO. 128783-01-000

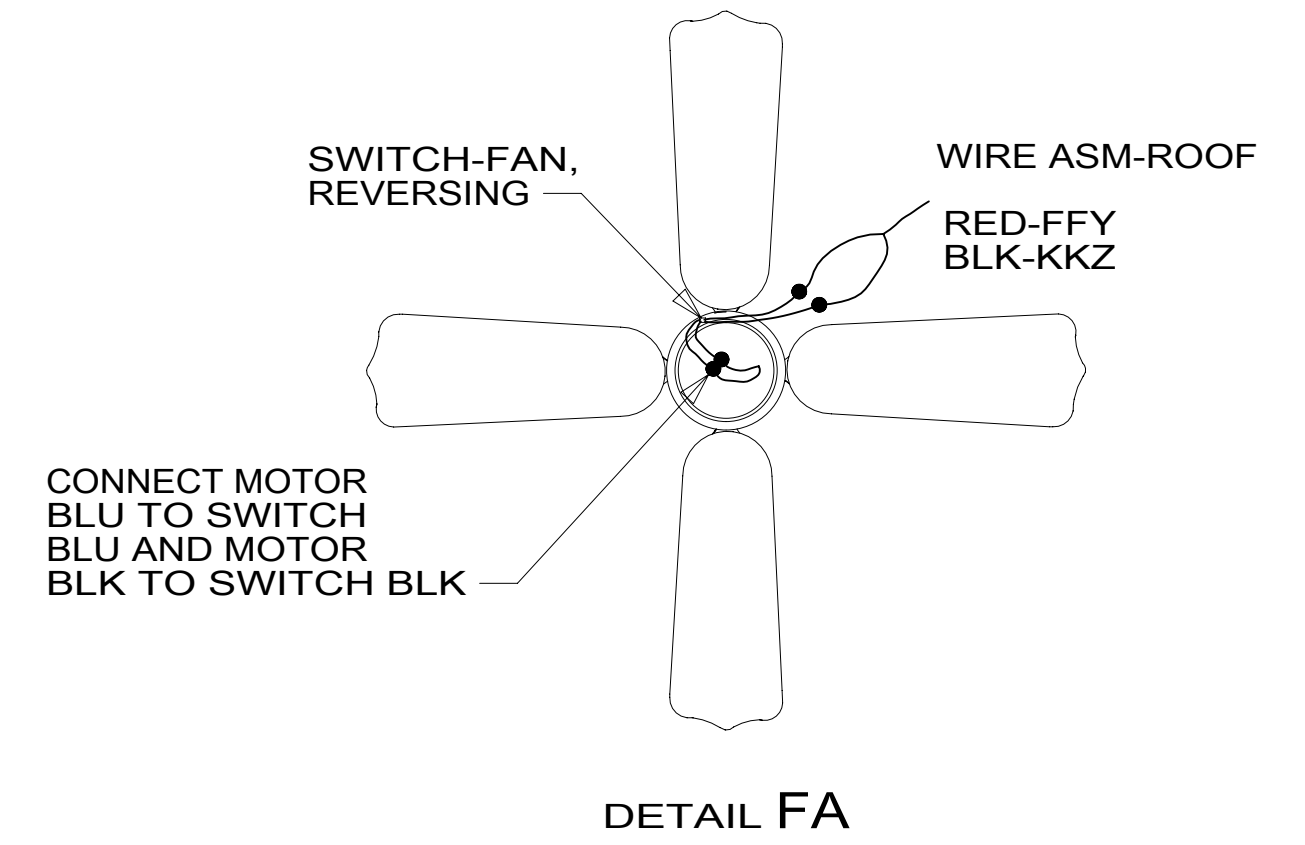
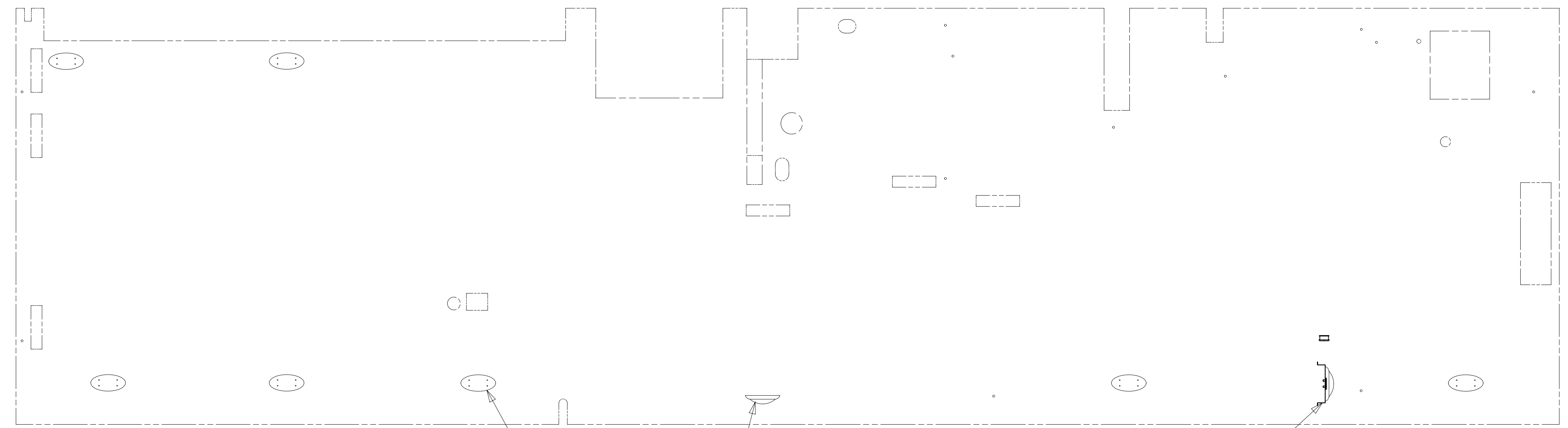
X-X FOR ELECTRICAL CALLOUTS SEE DWG NO. 121339-01-000

* 189383 *



FAN-CEILING
139134-01-CHT
SCREW
G11-10-16B (3)
CONNECTOR
58028-01-000 (2)
DETAIL FA

SPEAKER-ROUND, CEILING
160867-01-CHT (3)
SCREW
000G12-08-12U (12)



- 41Y FAN - CEILING_BEDROOM
- 265 CODES/STANDARDS-CSA/CMVSS
- 1B1 CODES/STANDARDS USA

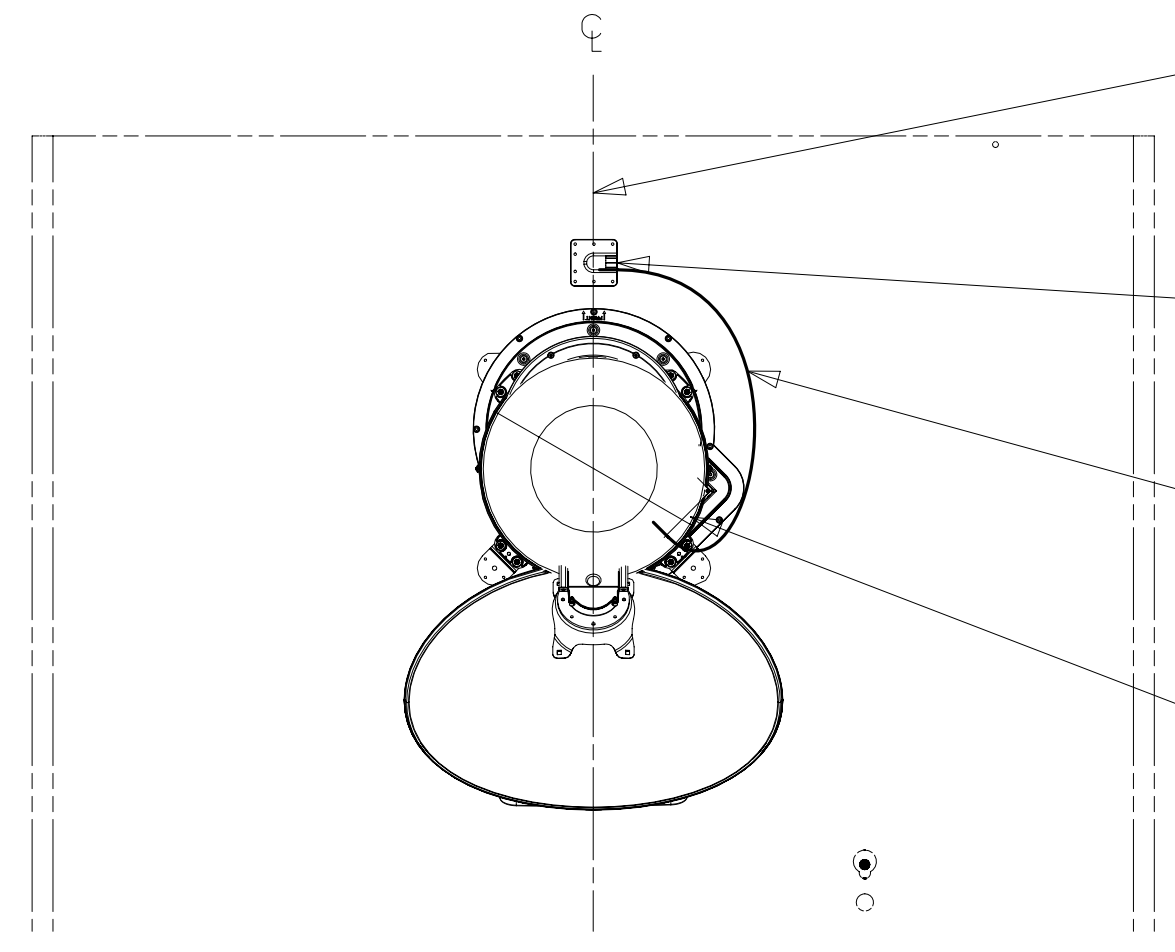
- NOTES:
- 4 CENTER FAN OVER 25MM HOLE IN ROOF.
 - 3 APPLY LOCTITE P/N 62917-06-000 TO FAN BLADE MOUNTING NUT THREADS.
 - 2 LAMP LOCATED IN SERVICE COMPARTMENT.
 - 1 LAMP LOCATED IN POWER CORD COMPARTMENT.

FOR ELECTRICAL TORQUE SPECIFICATIONS SEE DWG NO. 128783-01-000

FOR ELECTRICAL CALLOUTS SEE DWG NO. 121339-01-000

FIRST USED		15 J37F	
DO NOT SCALE DRAWING			
TITLE: WIRING INSTL-BODY, 12V			
SHEET 6	PART NO	189383	REV
		1	13-May-2015

189383



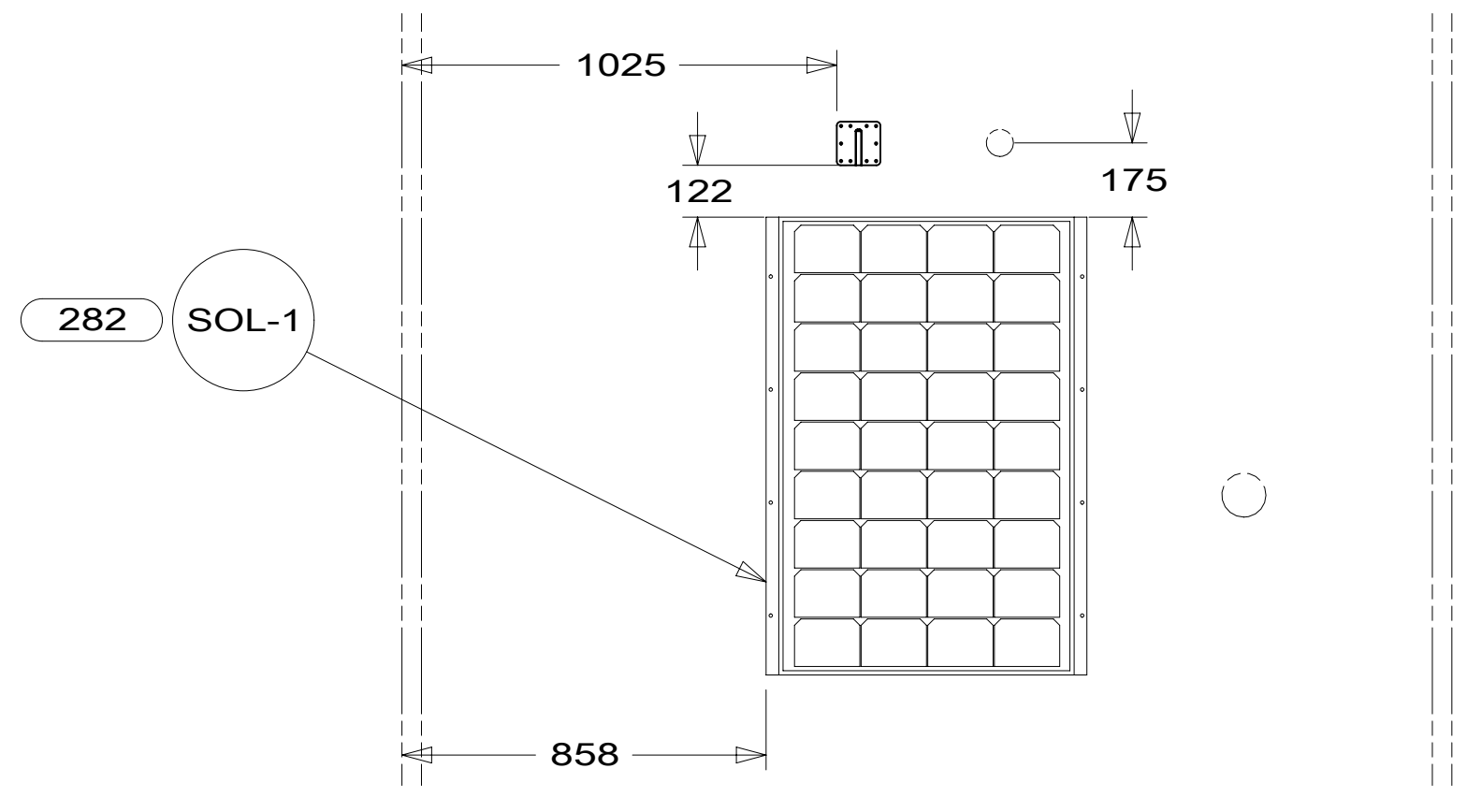
THE SATELLITE DISH AND WIRE CONNECTIONS ARE TO BE PLACED ON THE CENTERLINE OF THE MOTORHOME FACING FORWARD.

SEPARATE CABLES AND INSTALL WIRE COVER OVER HOLE IN ROOF ASM WITH CABLES EXITING ON PASSENGERS SIDE.

WHEN APPLYING ROOF SEALANT TO SATELLITE DISH, PLACE ROOF SEALANT HERE (APPROX. 75MM WIDE) AND PUSH THE CABLES INTO THE SEALANT TO STABILIZE THEM.

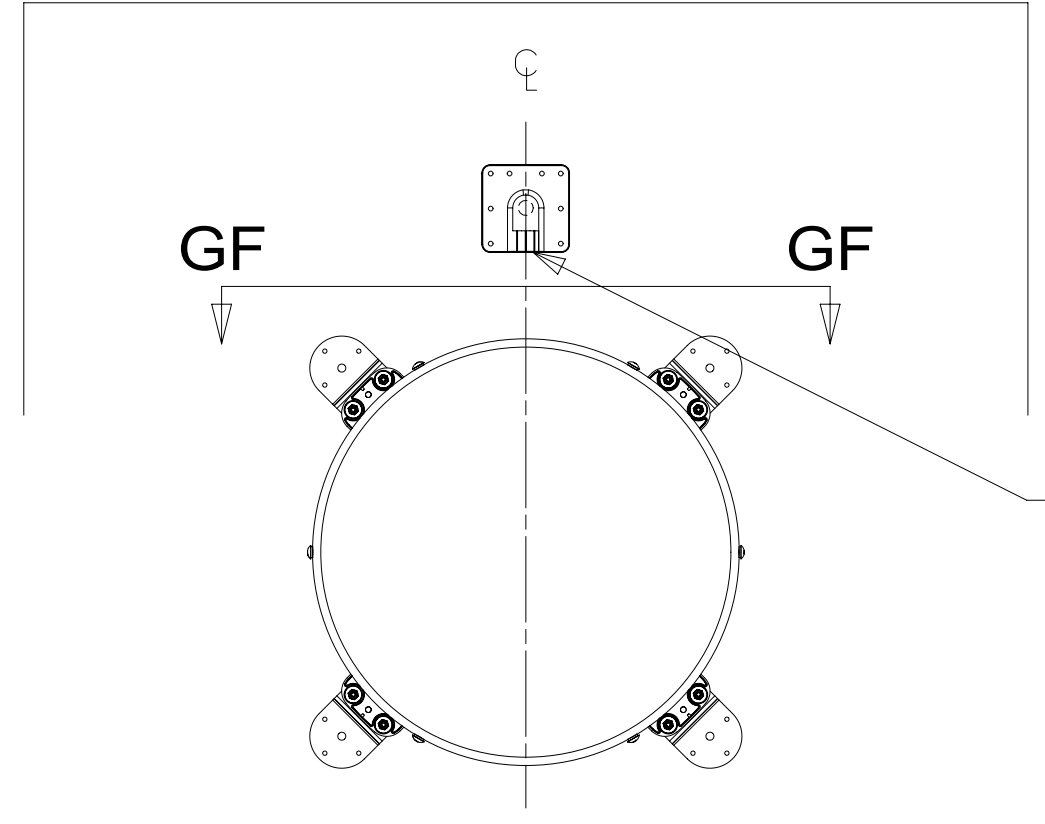
CONNECT CABLE ASM-COAX FROM ROOF ASM TO COAX CABLES ON SATELLITE DISH AND CONNECT 10' CABLE-DATA FROM ROOF ASM TO DATA CABLE FROM SATELLITE DISH AND PLACE ALL CONNECTIONS BACK INTO ROOF ASM.

DETAIL GB



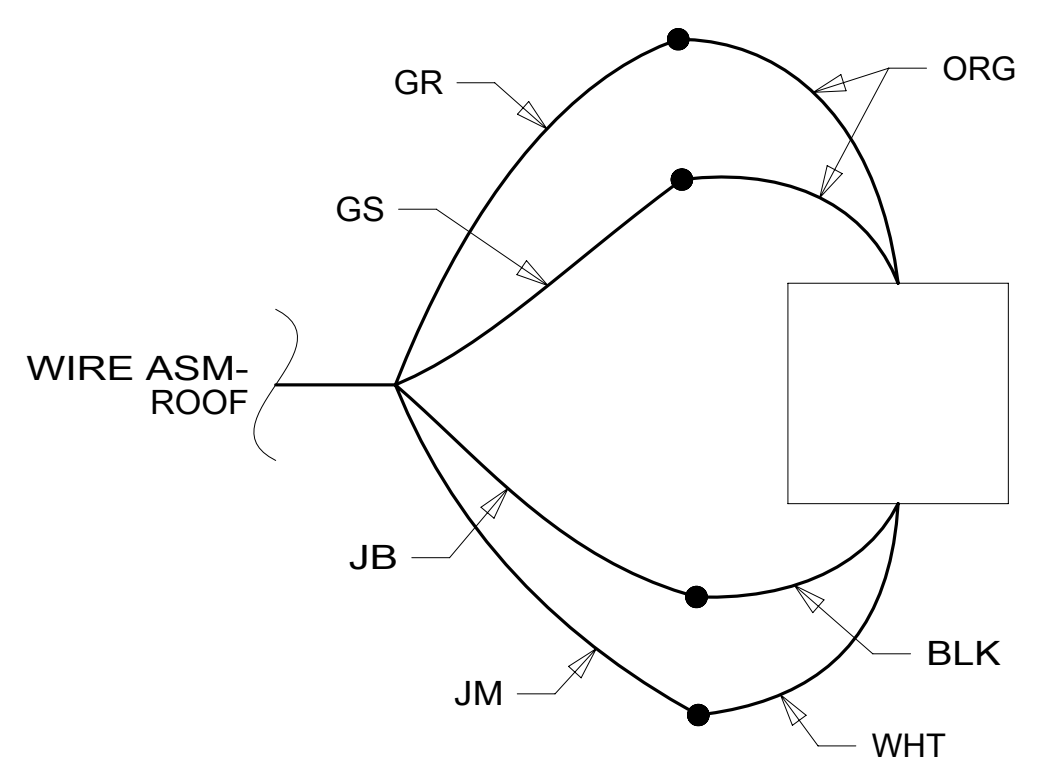
DETAIL GD

- 783 DA-4 1
DETAIL GB
- 48P DI-3 1
DETAIL GE

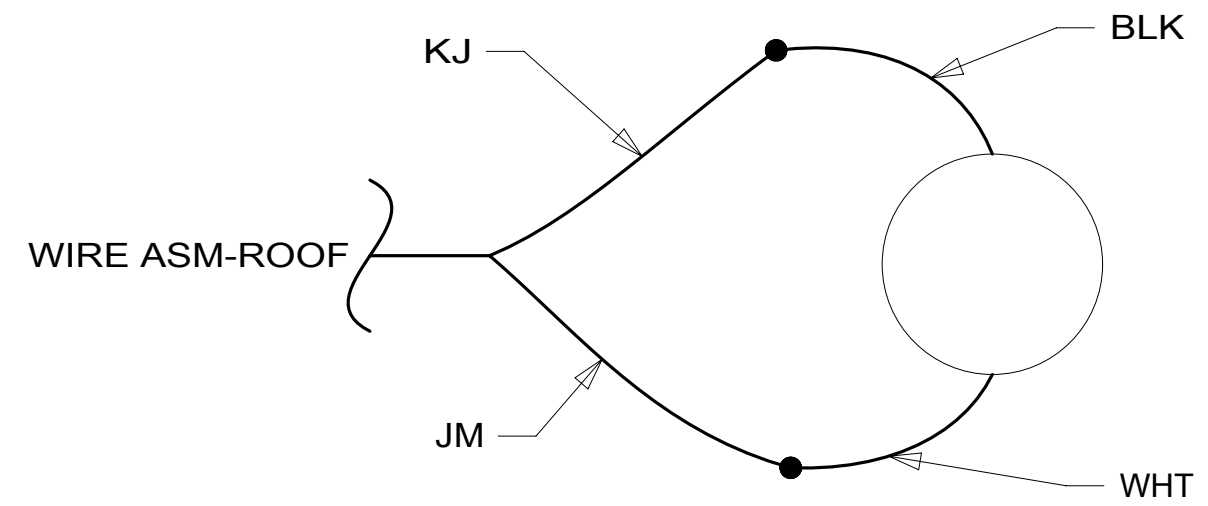


THE SATELLITE DISH WIRE CONNECTIONS ARE TO BE PLACED ON THE CENTERLINE OF THE MOTORHOME FACING FORWARD

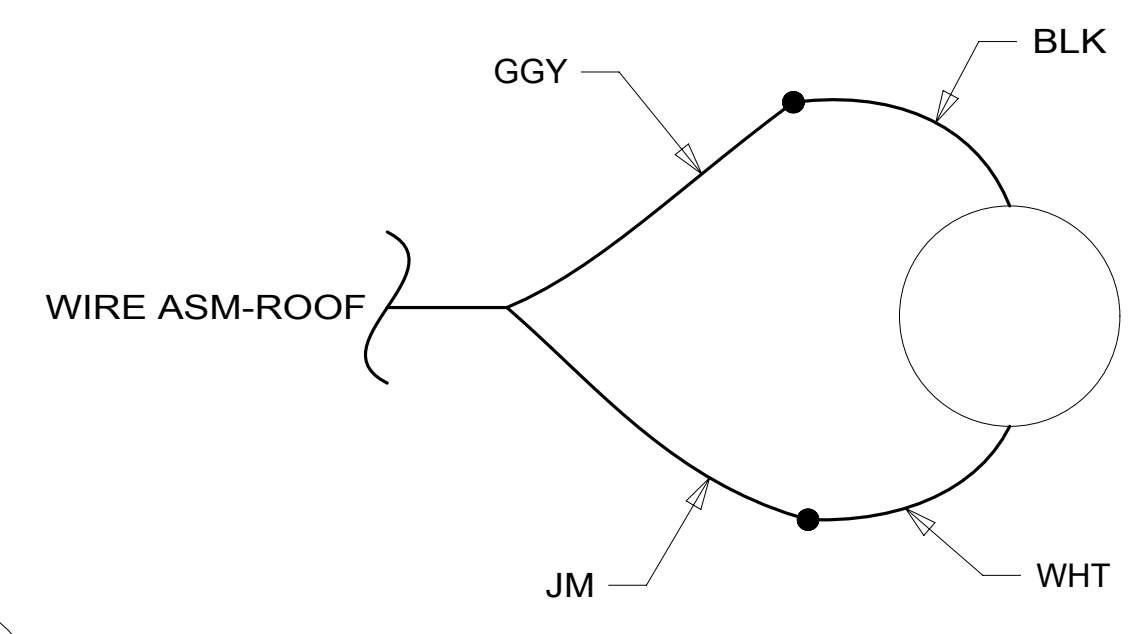
DETAIL GE



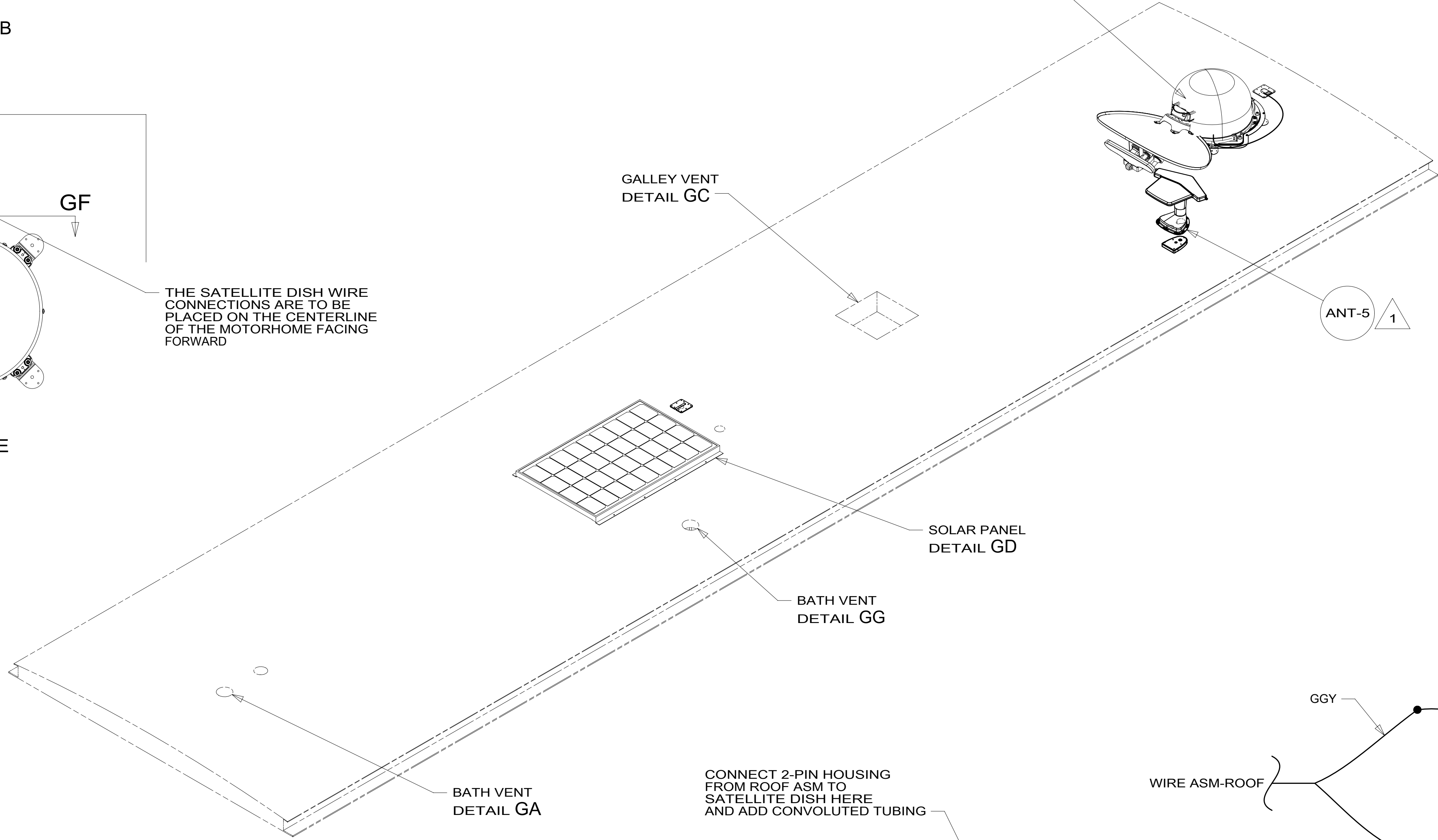
DETAIL GC



DETAIL GG



DETAIL GA



GALLEY VENT
DETAIL GC

SOLAR PANEL
DETAIL GD

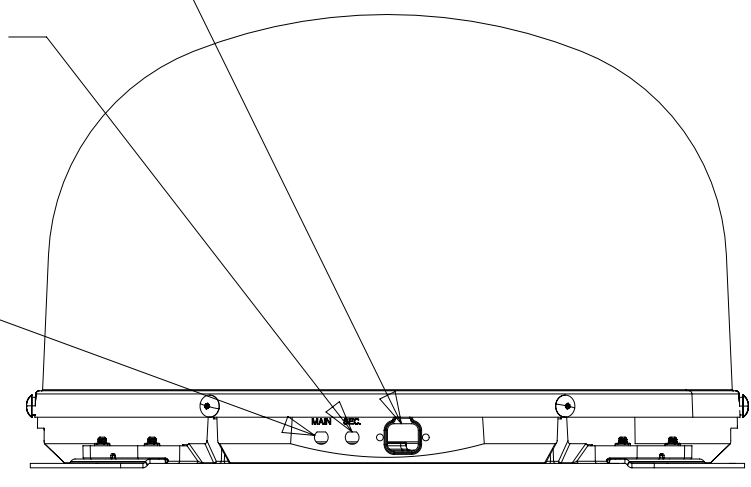
BATH VENT
DETAIL GG

BATH VENT
DETAIL GA

CONNECT 2-PIN HOUSING FROM ROOF ASM TO SATELLITE DISH HERE AND ADD CONVOLUTED TUBING

CONNECT CABLE ASM COAX (ORG-2) FROM ROOF ASM TO SEC INPUT ON SATELLITE DISH

CONNECT CABLE ASM COAX (ORG) FROM ROOF ASM TO MAIN INPUT ON SATELLITE DISH



VIEW GF-GF

- 282 SOLAR PANEL - 100 WATT
- 783 SATELLITE HD TV SYSTEM AUTOC
- 48P SAT TV SYSTEM IN-MOTION
- 265 CODES/STANDARDS-CSA/CMVSS
- 1B1 CODES/STANDARDS USA

1B1	265
FIRST USED	
15 J37F	
DO NOT SCALE DRAWING	
TITLE: WIRING INSTL-BODY, 12V	
SHEET 7	PART NO 189383 REV
1 13-May-2015	

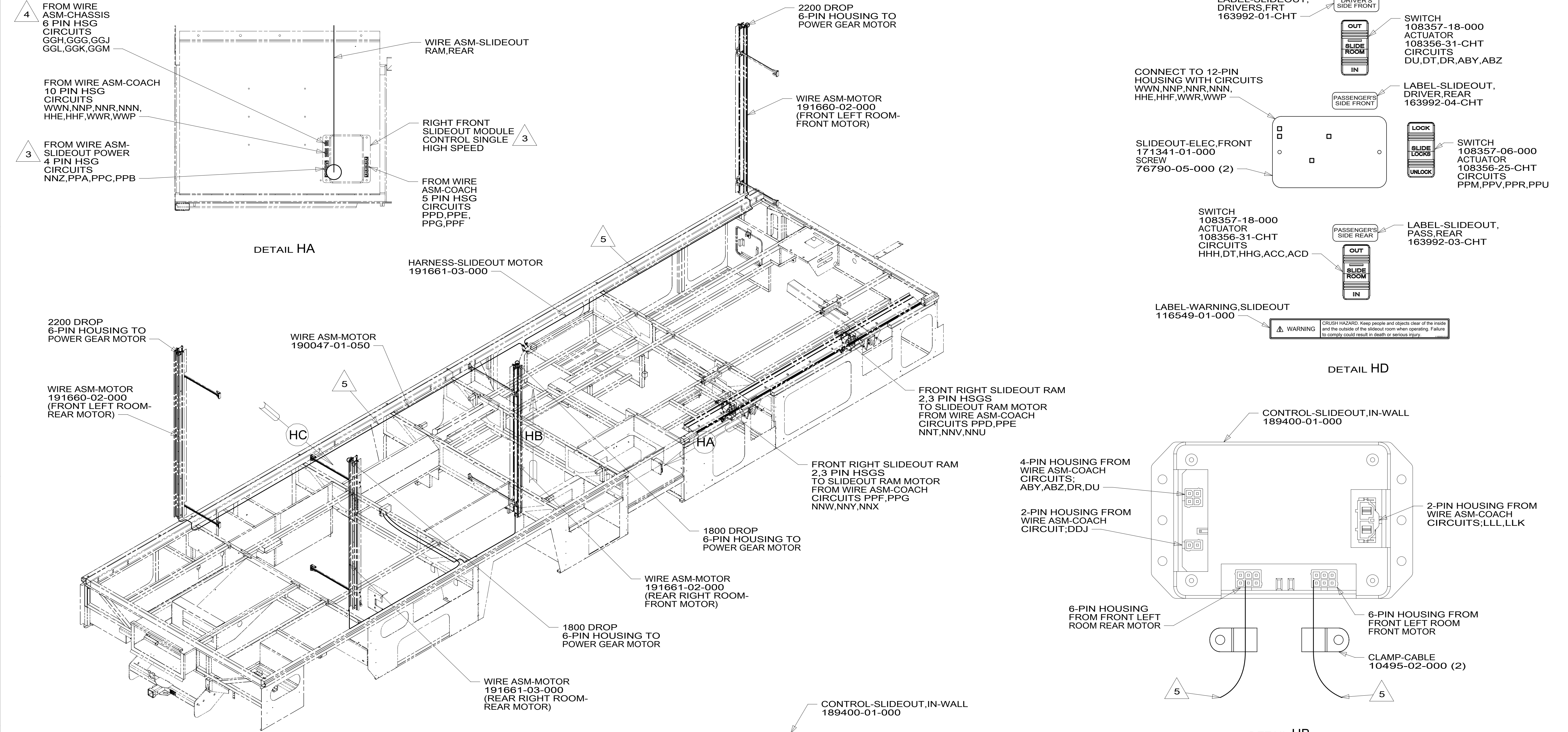
FOR ELECTRICAL TORQUE SPECIFICATIONS SEE DWG NO. 128783-01-000

FOR ELECTRICAL CALLOUTS SEE DWG NO. 121339-01-000

1 SEE ANTENNA INSTALLATION MANUAL FOR CORRECT INSTALLATION PROCEDURE.

NOTES:

189383



- NOTES:
- 5 ROUTE WIRE IN CHANNEL ON BOTTOM OF FLOOR AND COVER WITH TAPE-ALUMINUM 088479-01-000 AS NEEDED.
 - 4 SEE WIRING INSTL-CHASSIS FOR ADDITIONAL INFORMATION.
 - 3 SEE CHASSIS ELECTRICAL BOX ASM FOR ADDITIONAL INFORMATION.
 - 2. SEE WIRING DIAGRAM-BODY,12V FOR ADDITIONAL INFORMATION.
 - 1. ALL WIRES TO BE CLAMPED WITH CLAMP 10495-01-000 OR WIRE TIE 8343-02-000 EVERY 600MM, UNLESS OTHERWISE SPECIFIED.

DETAIL HA

DETAIL HD

DETAIL HB

DETAIL HC

FOR ELECTRICAL TORQUE SPECIFICATIONS SEE DWG NO. 128783-01-000

FOR ELECTRICAL CALLOUTS SEE DWG NO. 121339-01-000

- 265 CODES/STANDARDS-CSA/CMVSS
- 1B1 CODES/STANDARDS USA

15 J37F

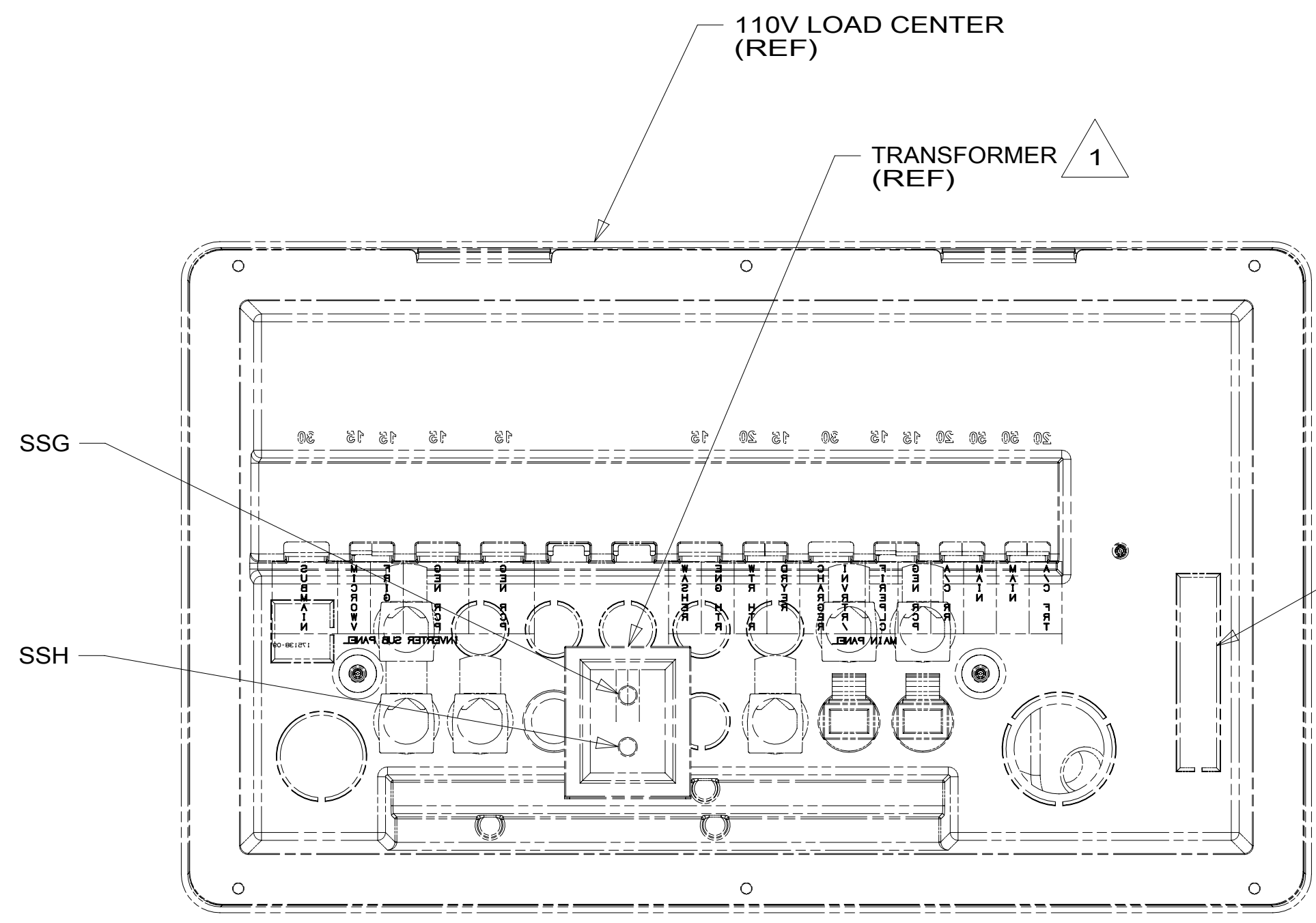
DO NOT SCALE DRAWING

TITLE: WIRING INSTL-BODY, 12V

SHEET 8 PART NO 189383 REV

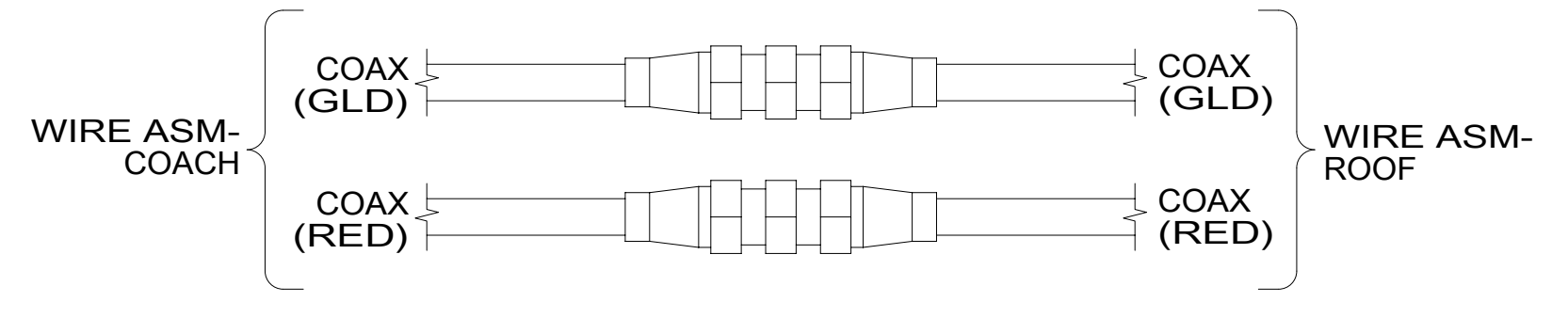
13-May-2015

189383

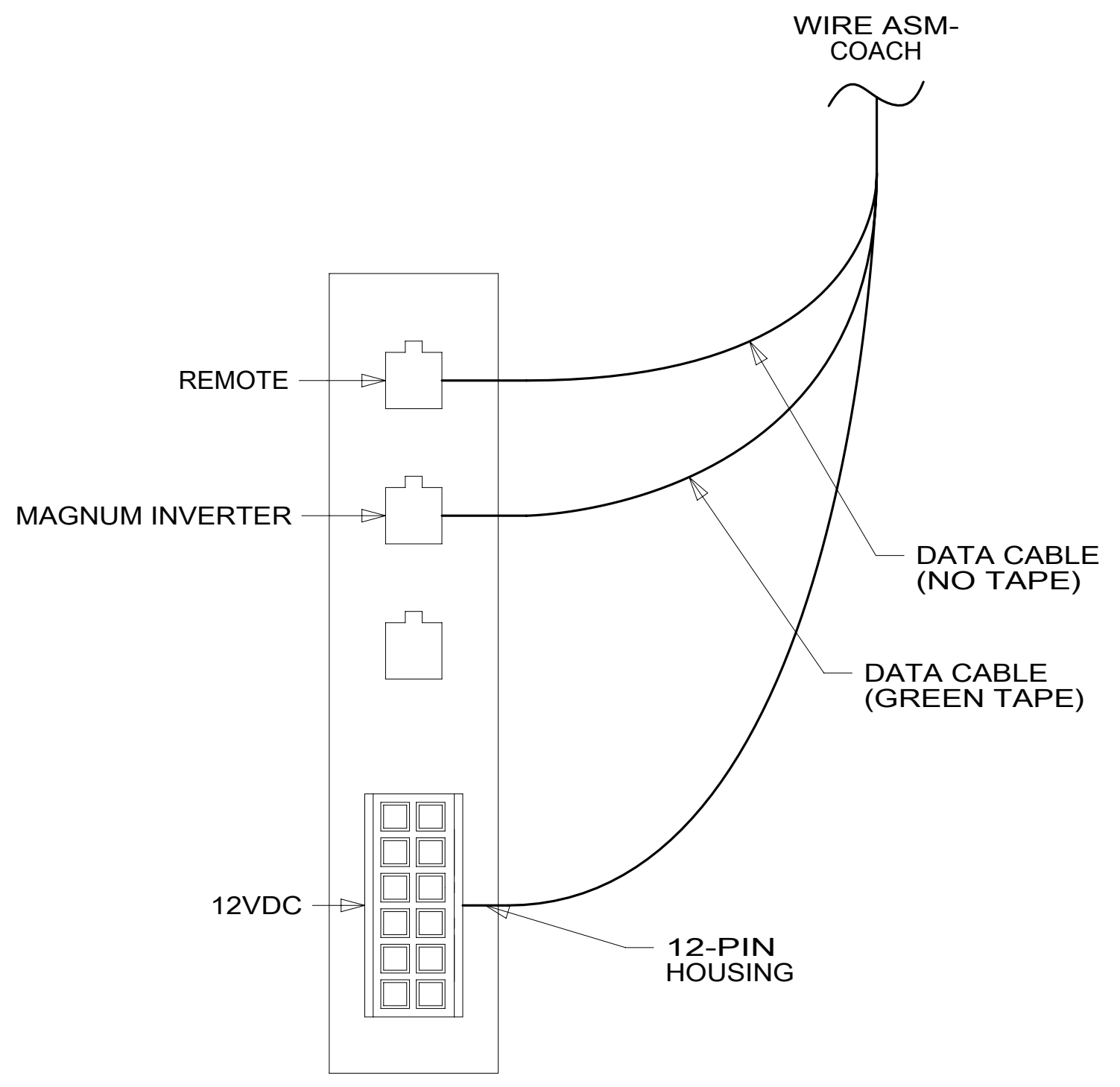


VIEW JA

WIRE ASM-COACH
REMOVE KNOCKOUT
DETAIL JB



DETAIL JC



DETAIL JB

NOTES:
1 SEE LOAD CENTER/ATS ASM FOR ADDITIONAL INFORMATION.

FOR ELECTRICAL TORQUE SPECIFICATIONS SEE DWG NO. 128783-01-000

X-X FOR ELECTRICAL CALLOUTS SEE DWG NO. 121339-01-000

- 265 CODES/STANDARDS-CSA/CMVSS
- 1B1 CODES/STANDARDS USA
- 1B1 265

FIRST USED	
15 J37F	
DO NOT SCALE DRAWING	
TITLE: WIRING INSTL-BODY, 12V	
SHEET 9	PART NO 189383 REV
1 13-May-2015	

189383