



**DANGER**

**Danger of electrical shock, burns or death.** Always remove all power sources before attempting any repair, service or diagnostic work. Power can be present from shore power, generator, inverter or battery. All power sources must be disabled and secured before performing any service.

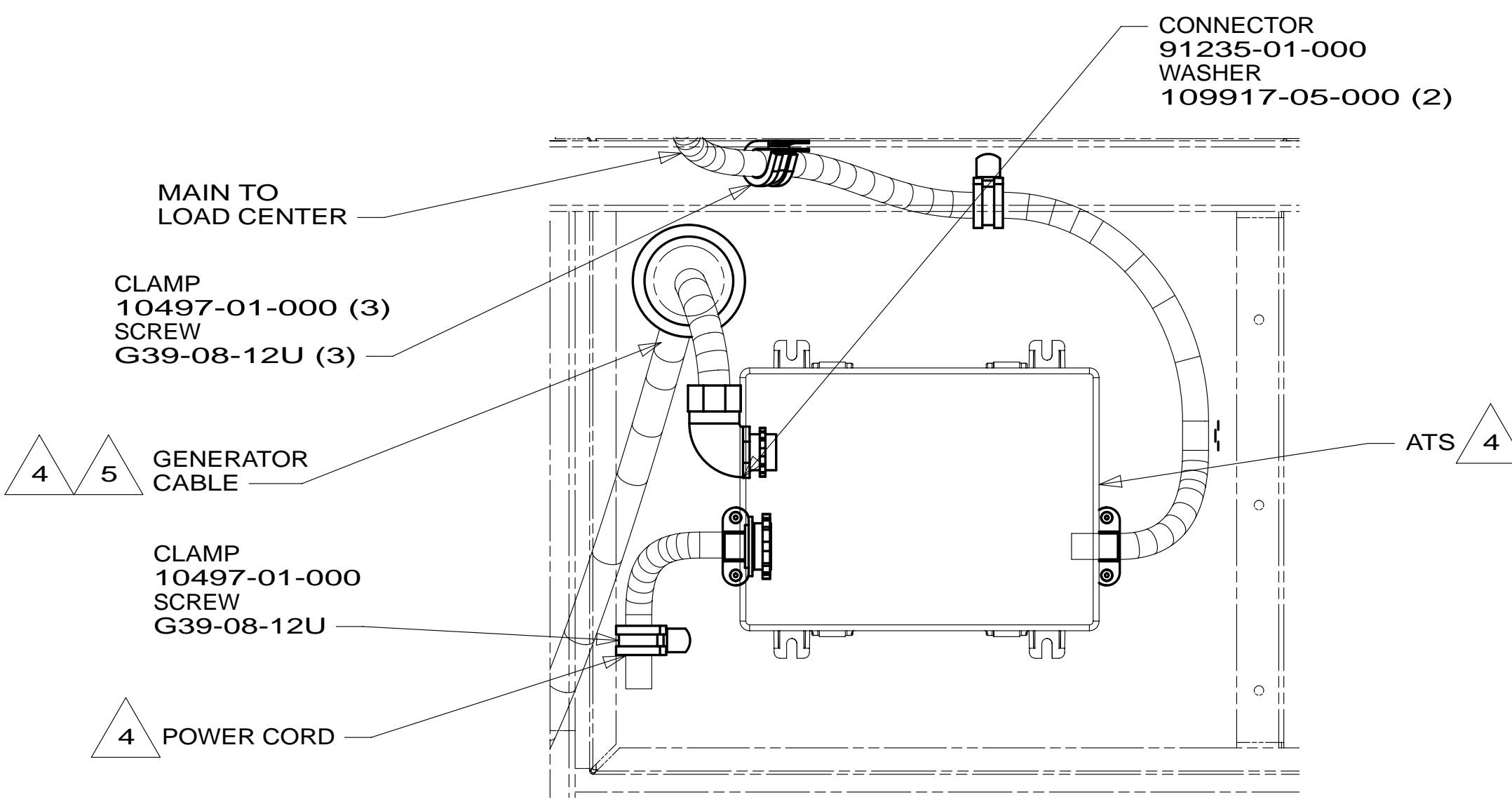
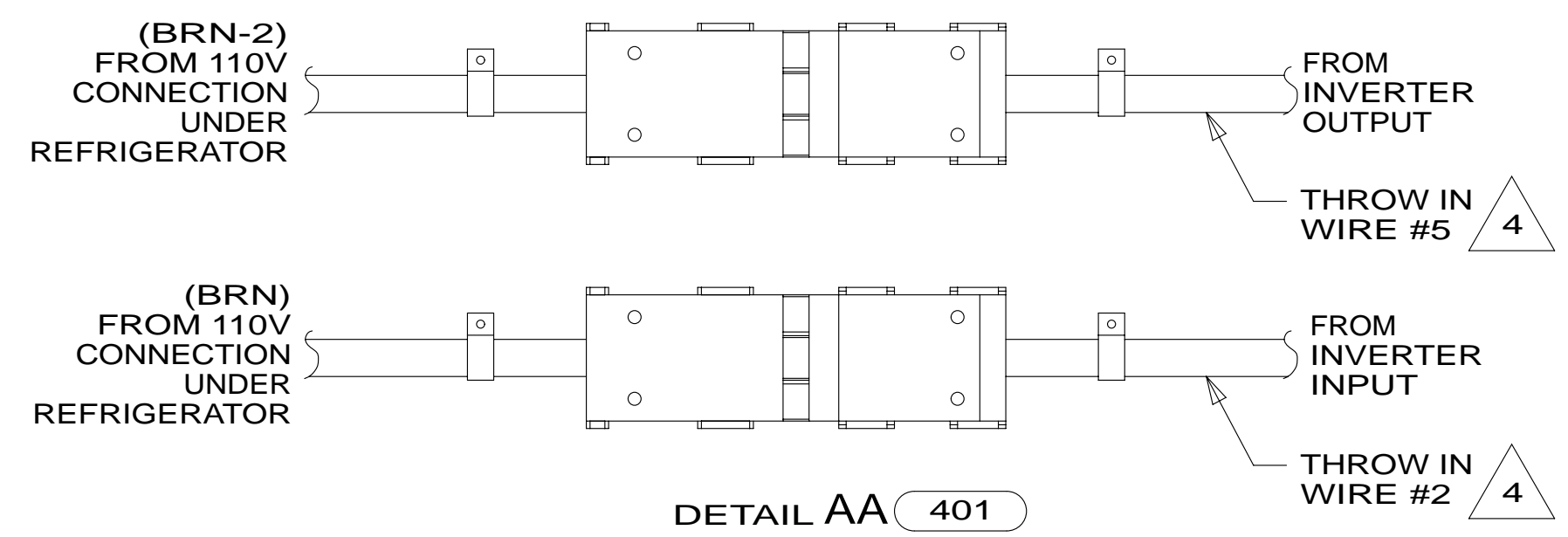
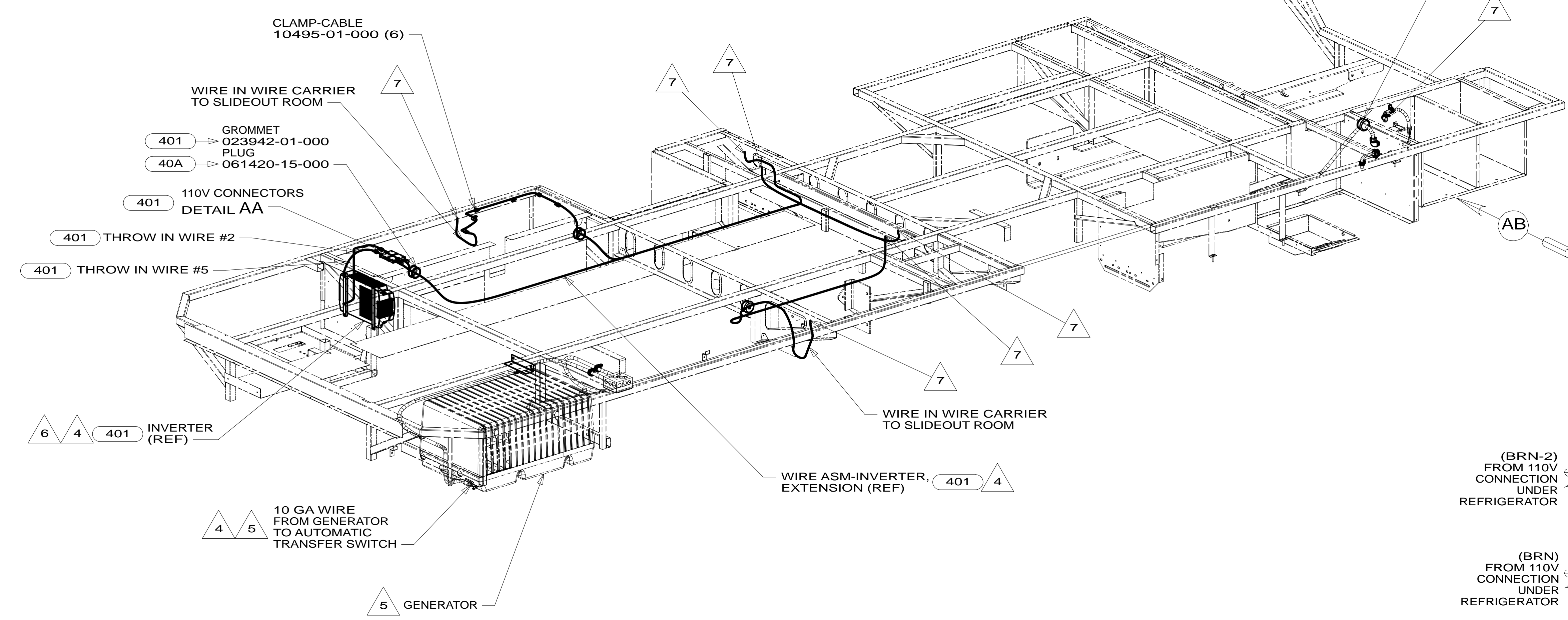


**CAUTION**

If you lack the skills, tools or equipment to perform diagnostic or repair work leave such work to an authorized Winnebago Industries dealer or other qualified shop.

| DRAWING NO. | FEATURE |
|-------------|---------|
| 189361-01   | -----   |
| 189361-11   | 1B1 12D |
| 189361-15   | 265 12D |

|          |                 |        |          |
|----------|-----------------|--------|----------|
| RELEASE  | REV/DATE        | DWG NO | 189361   |
| REV ZONE | REVISION RECORD | DATE   | DFT-ORIG |



- 7 WIRE PASSES THROUGH FLOOR IN THIS AREA.
- 6 SEE BATTERY INSTL FOR ADDITIONAL INFORMATION.
- 5 SEE GENERATOR INSTL FOR ADDITIONAL INFORMATION.
- 4 SEE LOAD CENTER/ATS ASM FOR ADDITIONAL INFORMATION.

3. ALL GROUND WIRES TO BE COVERED WITH TUBING 8041-02-000.
2. ALL 110V WIRES ARE TO BE CLAMPED WITH CLAMP 10497-05-000 WITHIN 200MM OF OUTLET BOXES, USE SCREW G67-10-12B.
1. ALL WIRES TO BE SECURED WITH CLAMP 10495 OR 10497 OR WIRE TIE 8343 OR 108046 EVERY 600MM, USE SCREW G67-XX-XXX OR G56-XX-XXX AS APPROPRIATE FOR INSTALLATION.

NOTES:

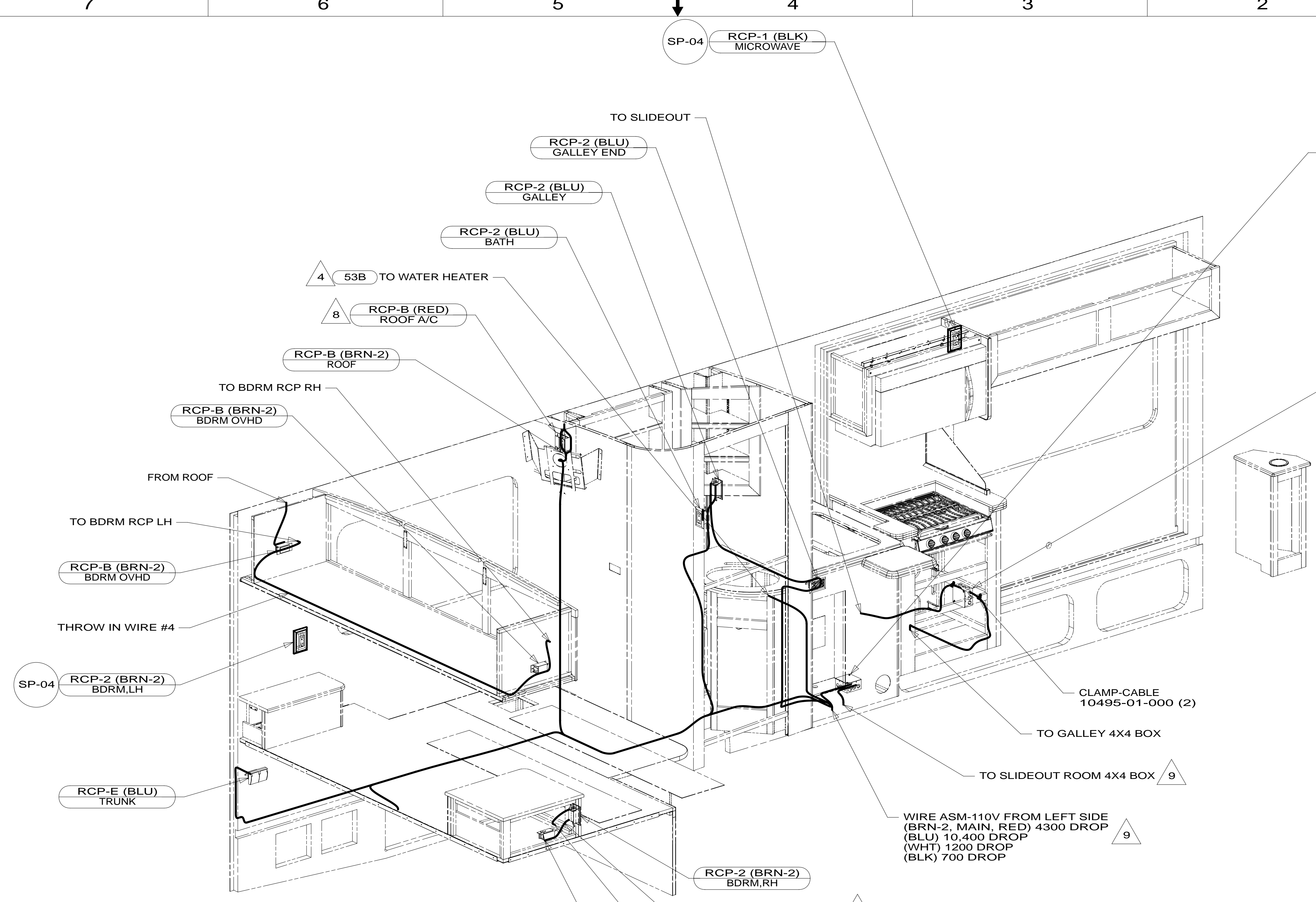
- 401 INVERTER-DC/AC, 1000 WATT
- 40A INVERTER-DC/AC WITHOUT
- 12D ELECTRICAL SYSTEM 30 AMP
- 265 CODES/STANDARDS-CSA/CMVSS
- 1B1 CODES/STANDARDS USA

|                                      |                                      |   |     |
|--------------------------------------|--------------------------------------|---|-----|
| <b>WINNEBAGO</b>                     |                                      | COPYRIGHT 2014<br>WINNEBAGO<br>INDUSTRIES, INC.       |     |
| DFT-ORIG                             | ORIG. DATE                           | <b>15 730J</b>  |     |
| CHKR                                 | ALL DIMENSIONS ARE<br>IN MILLIMETERS |   |     |
| P.E.                                 | FIRST USED                           |   |     |
| M.E.                                 |                                      |   |     |
| DSNR                                 |                                      |   |     |
| UNSPECIFIED TOLERANCES ARE:          |                                      | MATERIAL:   |     |
| WHOLE DIM (X)                        | : 3                                  |   |     |
| ONE-PLACE (X.X)                      | : 1.5                                |   |     |
| TWO-PLACE (X.XX)                     | : 0.50                               |   |     |
| ANGLE                                | : 1'                                 |   |     |
| THIRD ANGLE<br>PROJECTION            |                                      |   |     |
| DO NOT SCALE DRAWING                 |                                      | REFER TO ES0018 FOR FASTENER<br>TIGHTENING GUIDELINES |     |
| TITLE: <b>WIRING INSTL-BODY,110V</b> |                                      |   |     |
| SHEET 1 OF 4                         | PART NO                              | 189361  | REV |
| REF:                                 | 1                                    | 28-May-2014   |     |

FOR ELECTRICAL  
TORQUE  
SPECIFICATIONS  
SEE DWG NO.  
128783-01-000

FOR  
ELECTRICAL  
CALLOUTS  
SEE DWG NO.  
121339-01-000

\* 189361 \*



- 9 WIRE PASSES THROUGH FLOOR IN THIS AREA.
- 8 SEE WIRING INSTL-ROOF,AC FOR ADDITIONAL INFORMATION.
- 7 ALL GROUND WIRES TO BE COVERED WITH TUBING 8041-02-000.
- 6 CONNECT WIRES, WHT TO WHT, BLK TO BLK, GROUNDS TO GROUNDS.
- 5 THIS CONNECTOR TO BE INSTALLED ON PRODUCTION LINE.
- 4 SEE LOAD CENTER/ATS ASM FOR ADDITIONAL INFORMATION.

- 3. ALL GROUND WIRES TO BE COVERED WITH TUBING 8041-02-000.
- 2. ALL 110V WIRING TO BE SECURED WITHIN 200MM OF OUTLET BOXES.
- 1. ALL WIRES TO BE SECURED WITH CLAMP 10495 OR 10497 OR WIRE TIE 8343 OR 108046 EVERY 600MM, USE SCREW G67-XX-XXX OR G56-XX-XXX AS APPROPRIATE FOR INSTALLATION.

NOTES:

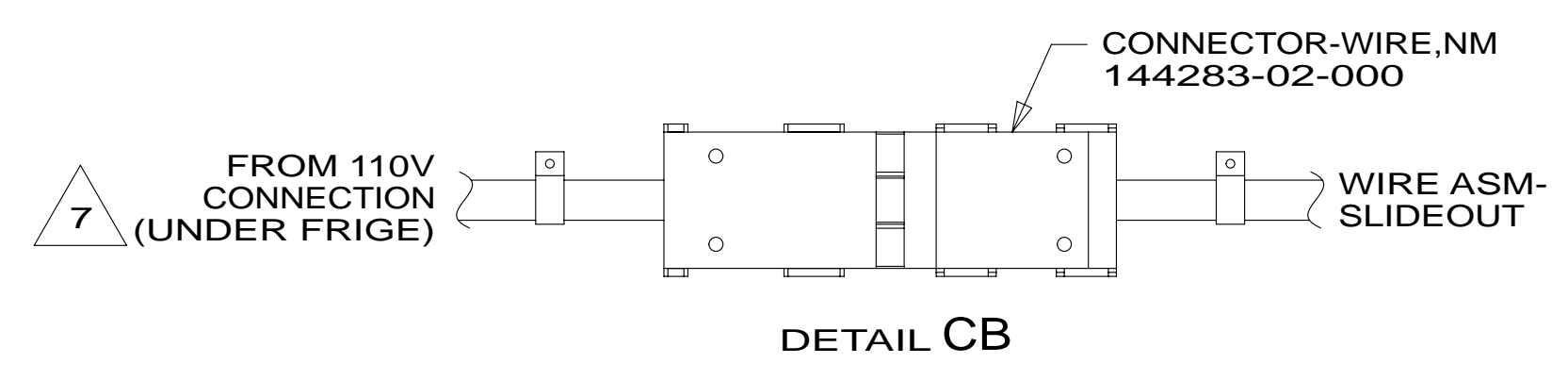
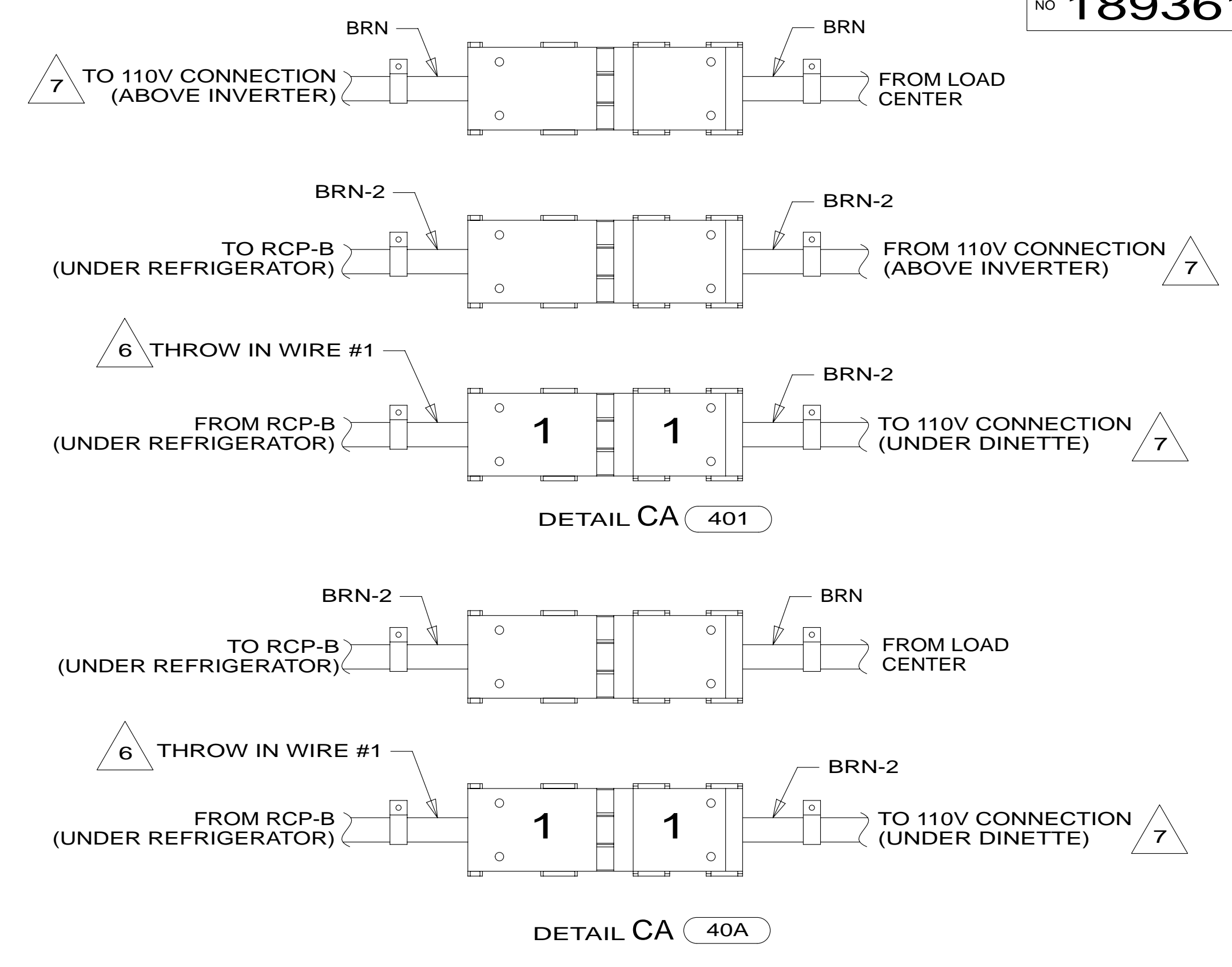
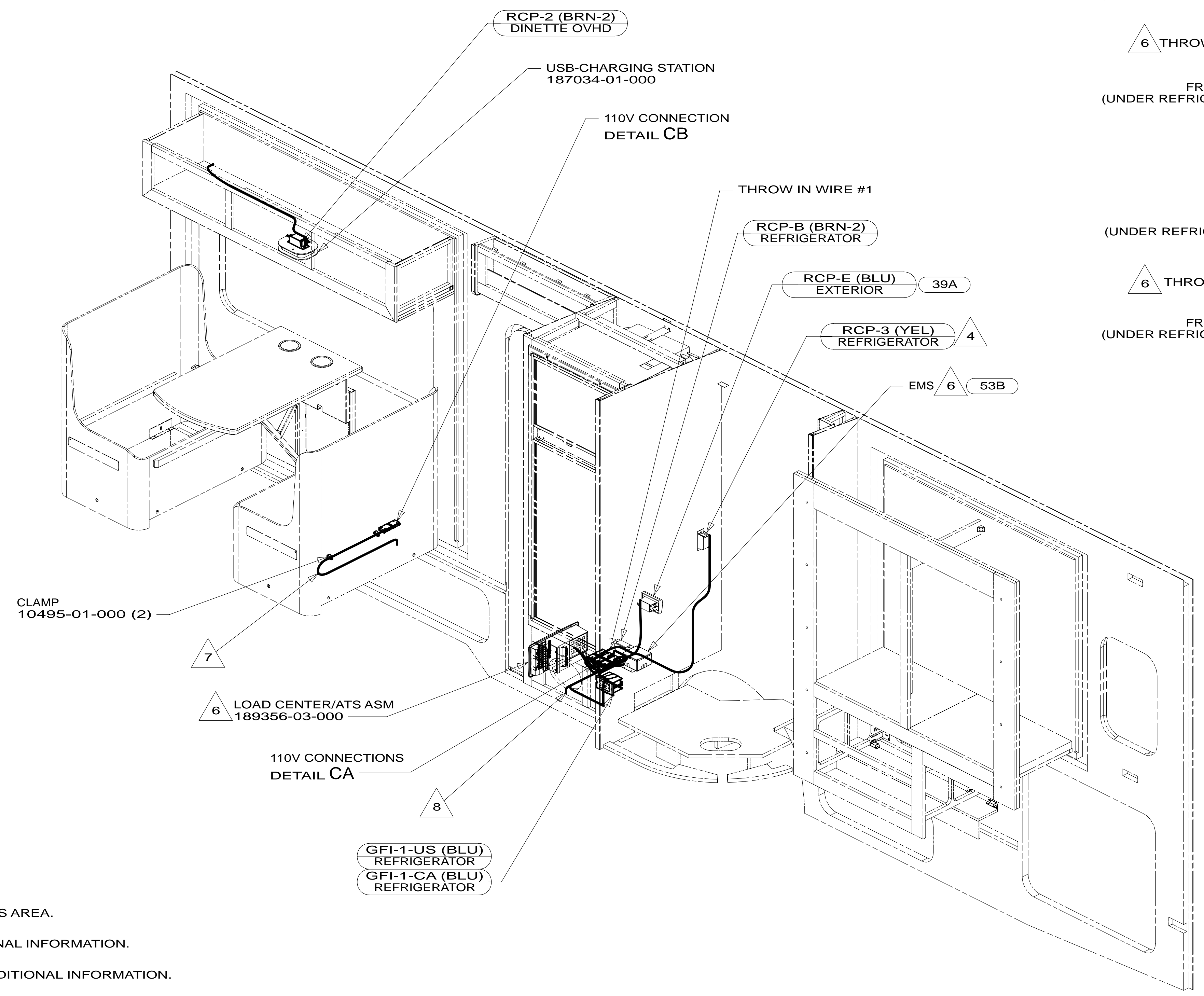
- 49M AIR SLEEP SYSTEM-QUEEN SIZE
- 53B WTR HTR-6GAL ELECTRIC/LP GAS
- 12D ELECTRICAL SYSTEM 30 AMP
- 265 CODES/STANDARDS-CSA/CMVSS
- 1B1 CODES/STANDARDS USA

|                                       |                       |     |
|---------------------------------------|-----------------------|-----|
| 1B1                                   | 265                   | 12D |
| FIRST USED                            |                       |     |
| <b>15 730J</b>                        |                       |     |
| <b>DO NOT SCALE DRAWING</b>           |                       |     |
| <b>TITLE: WIRING INSTL-BODY, 110V</b> |                       |     |
| SHEET 2                               | PART NO <b>189361</b> | REV |

FOR ELECTRICAL TORQUE SPECIFICATIONS SEE DWG NO. 128783-01-000

FOR ELECTRICAL CALLOUTS SEE DWG NO. 121339-01-000

\* 189361 A



- NOTES:**
- 8 WIRE PASSES THROUGH FLOOR IN THIS AREA.
  - 7 SEE WIRE ASM-CHASSIS FOR ADDITIONAL INFORMATION.
  - 6 SEE LOAD CENTER/ATS INSTL FOR ADDITIONAL INFORMATION.
  - 5 SEE ENTERTAINMENT CENTER-EXTERIOR FOR ADDITIONAL INFORMATION.
  - 4 LOCATE RCP-REFRIGERATOR ON TIEDOWN STRAP.
  - 3. ALL GROUND WIRES TO BE COVERED WITH TUBING 8041-02-000.
  - 2. ALL 110V WIRING TO BE SECURED WITHIN 200MM OF OUTLET BOXES.
  - 1. ALL WIRES TO BE SECURED WITH CLAMP 10495 OR 10497 OR WIRE TIE 8343 OR 108046 EVERY 600MM, USE SCREW G67-XX-XXX OR G56-XX-XXX AS APPROPRIATE FOR INSTALLATION.

- 40A INVERTER-DC/AC WITHOUT
- 401 INVERTER-DC/AC, 1000 WATT
- 53B WTR HTR-6GAL ELECTRIC/LP GAS
- 39A EXT RECEPTACLE DPLX 120VAC
- 12D ELECTRICAL SYSTEM 30 AMP
- 265 CODES/STANDARDS-CSA/CMVSS
- 1B1 CODES/STANDARDS USA

FOR ELECTRICAL TORQUE SPECIFICATIONS SEE DWG NO. 128783-01-000

FOR ELECTRICAL CALLOUTS SEE DWG NO. 121339-01-000

1B1 265 12D

FIRST USED

**15 730J**

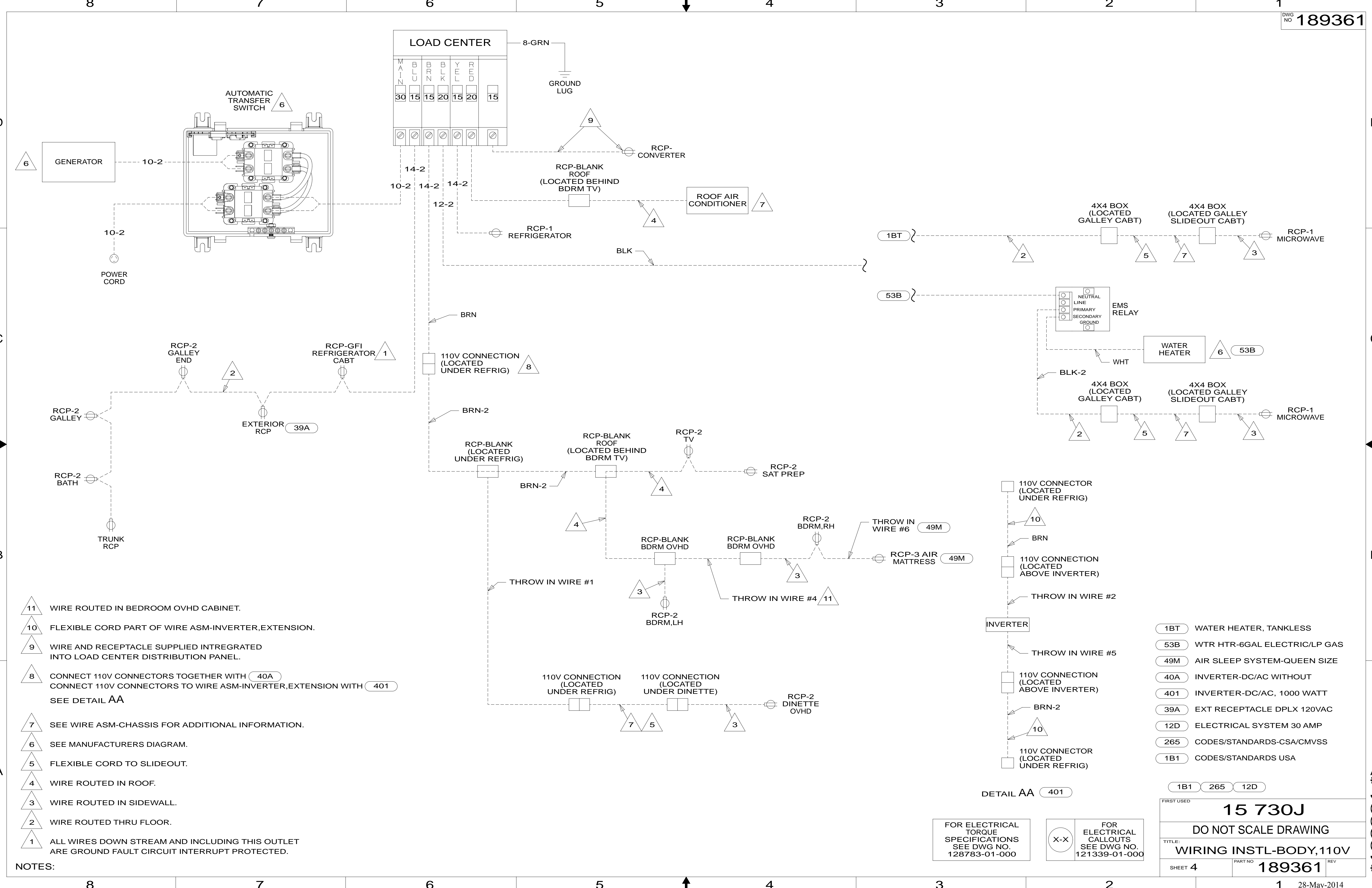
**DO NOT SCALE DRAWING**

TITLE: **WIRING INSTL-BODY, 110V**

SHEET 3 PART NO. **189361** REV

28-May-2014

\* 189361 \* A



- NOTES:
- 11 WIRE ROUTED IN BEDROOM OVHD CABINET.
  - 10 FLEXIBLE CORD PART OF WIRE ASM-INVERTER, EXTENSION.
  - 9 WIRE AND RECEPTACLE SUPPLIED INTREGRATED INTO LOAD CENTER DISTRIBUTION PANEL.
  - 8 CONNECT 110V CONNECTORS TOGETHER WITH (40A) CONNECT 110V CONNECTORS TO WIRE ASM-INVERTER, EXTENSION WITH (401) SEE DETAIL AA
  - 7 SEE WIRE ASM-CHASSIS FOR ADDITIONAL INFORMATION.
  - 6 SEE MANUFACTURERS DIAGRAM.
  - 5 FLEXIBLE CORD TO SLIDEOUT.
  - 4 WIRE ROUTED IN ROOF.
  - 3 WIRE ROUTED IN SIDEWALL.
  - 2 WIRE ROUTED THRU FLOOR.
  - 1 ALL WIRES DOWN STREAM AND INCLUDING THIS OUTLET ARE GROUND FAULT CIRCUIT INTERRUPT PROTECTED.

- (1BT) WATER HEATER, TANKLESS
- (53B) WTR HTR-6GAL ELECTRIC/LP GAS
- (49M) AIR SLEEP SYSTEM-QUEEN SIZE
- (40A) INVERTER-DC/AC WITHOUT
- (401) INVERTER-DC/AC, 1000 WATT
- (39A) EXT RECEPTACLE DPLX 120VAC
- (12D) ELECTRICAL SYSTEM 30 AMP
- (265) CODES/STANDARDS-CSA/CMVSS
- (1B1) CODES/STANDARDS USA

FOR ELECTRICAL TORQUE SPECIFICATIONS SEE DWG NO. 128783-01-000

(X-X)

FOR ELECTRICAL CALLOUTS SEE DWG NO. 121339-01-000

15 730J

DO NOT SCALE DRAWING

TITLE: WIRING INSTL-BODY, 110V

SHEET 4 PART NO 189361 REV

28-May-2014

\* 189361 A \*