



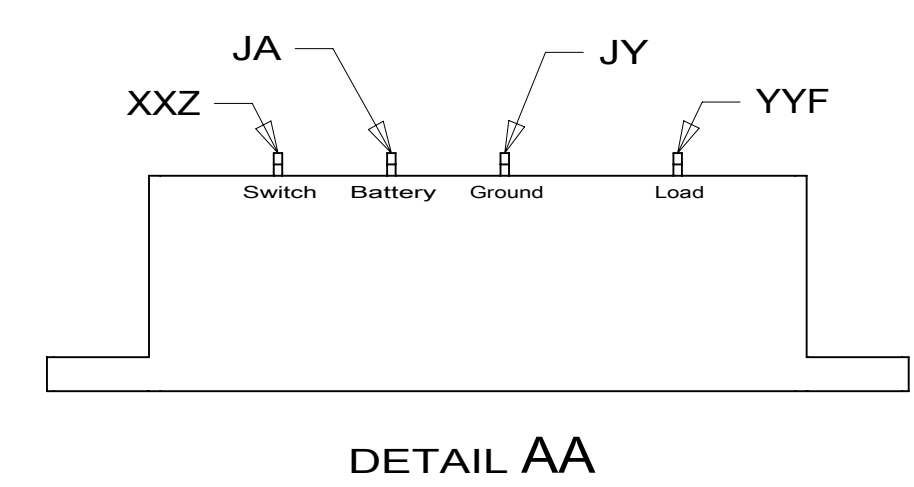
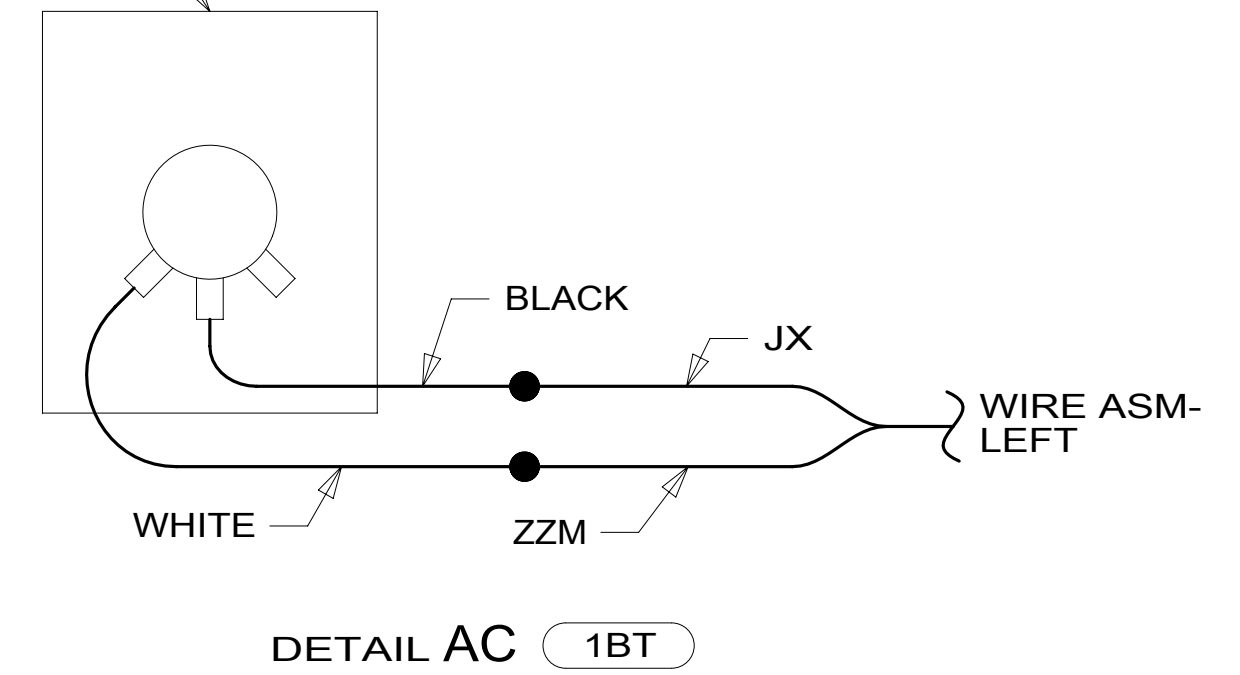
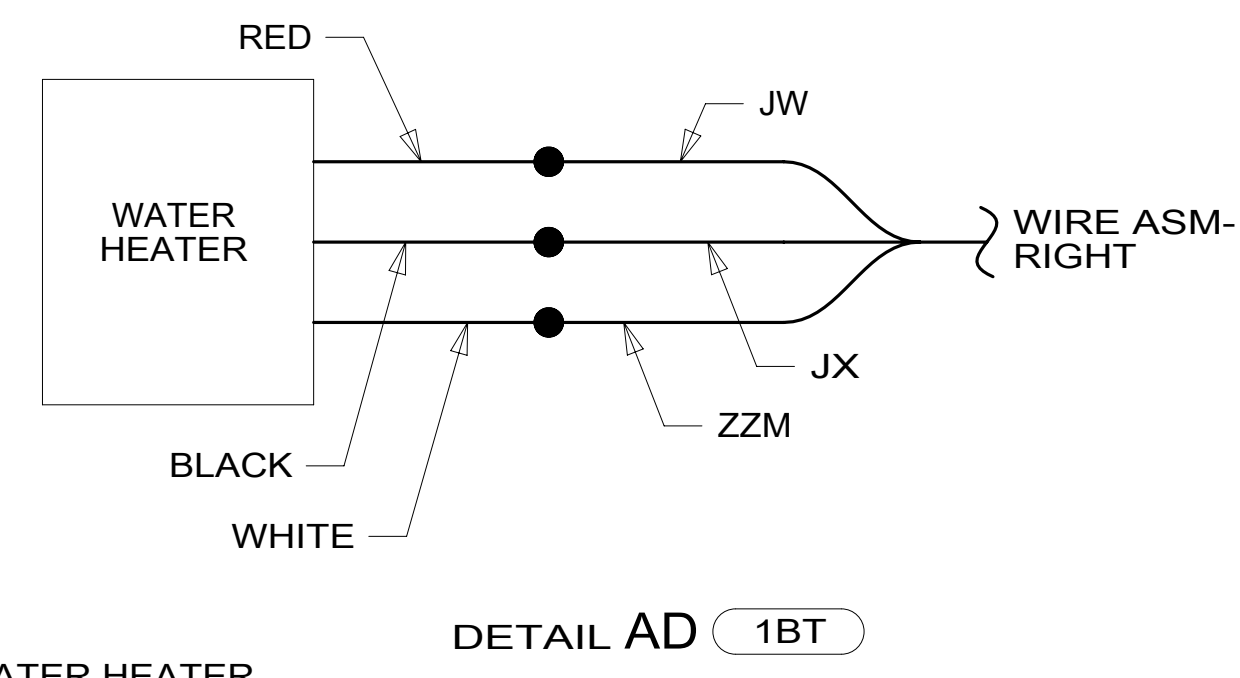
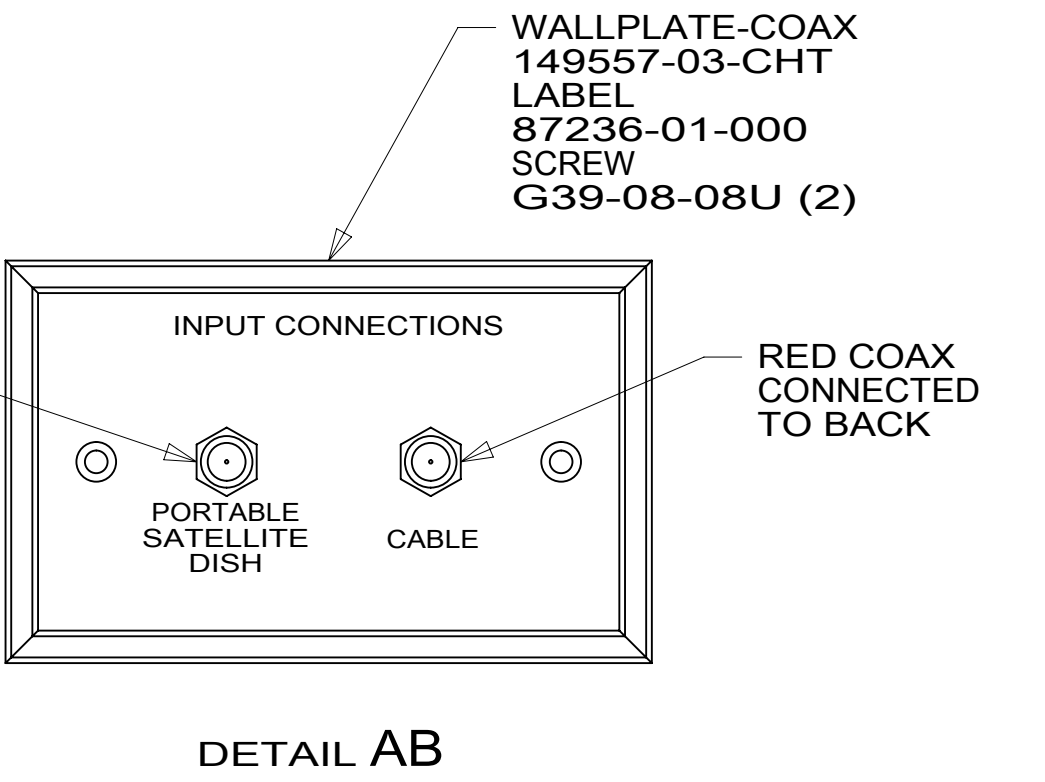
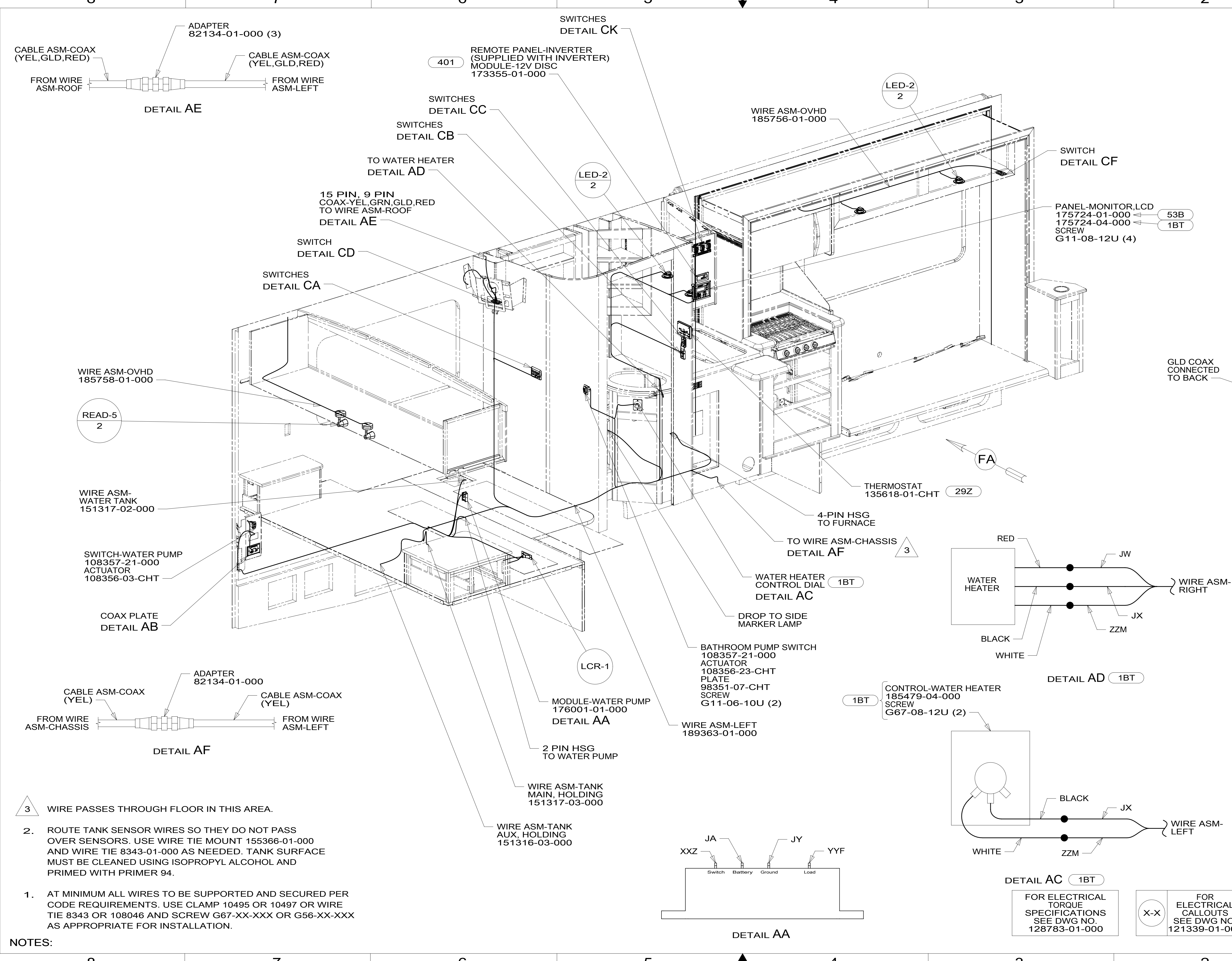
DANGER

Danger of electrical shock, burns or death. Always remove all power sources before attempting any repair, service or diagnostic work. Power can be present from shore power, generator, inverter or battery. All power sources must be disabled and secured before performing any service.



CAUTION

If you lack the skills, tools or equipment to perform diagnostic or repair work leave such work to an authorized Winnebago Industries dealer or other qualified shop.



- NOTES:
1. AT MINIMUM ALL WIRES TO BE SUPPORTED AND SECURED PER CODE REQUIREMENTS. USE CLAMP 10495 OR 10497 OR WIRE TIE 8343 OR 108046 AND SCREW G67-XX-XXX OR G56-XX-XXX AS APPROPRIATE FOR INSTALLATION.
 2. ROUTE TANK SENSOR WIRES SO THEY DO NOT PASS OVER SENSORS. USE WIRE TIE MOUNT 155366-01-000 AND WIRE TIE 8343-01-000 AS NEEDED. TANK SURFACE MUST BE CLEANED USING ISOPROPYL ALCOHOL AND PRIMED WITH PRIMER 94.
 3. WIRE PASSES THROUGH FLOOR IN THIS AREA.

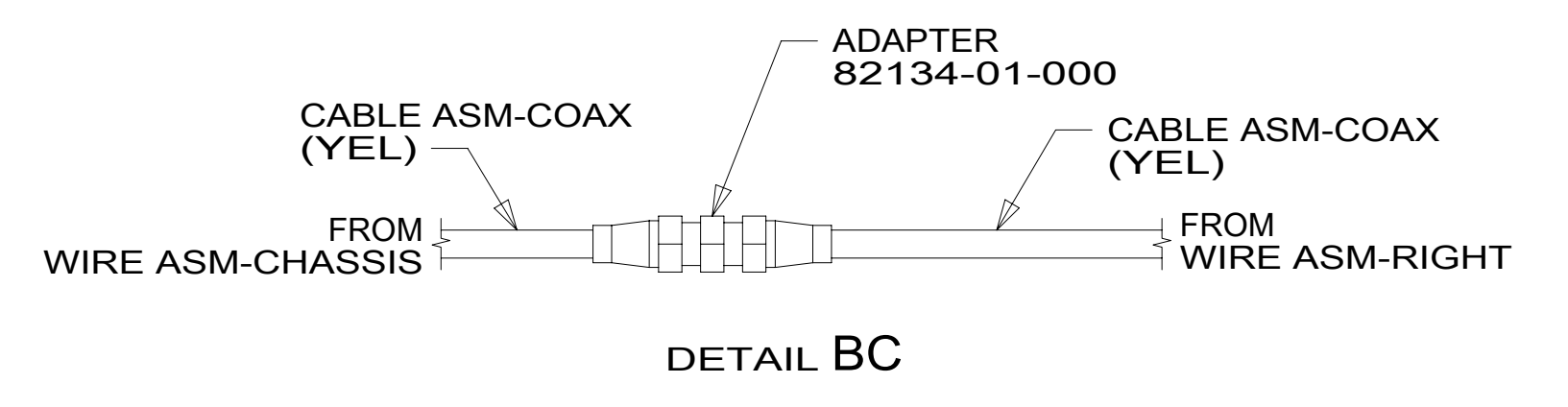
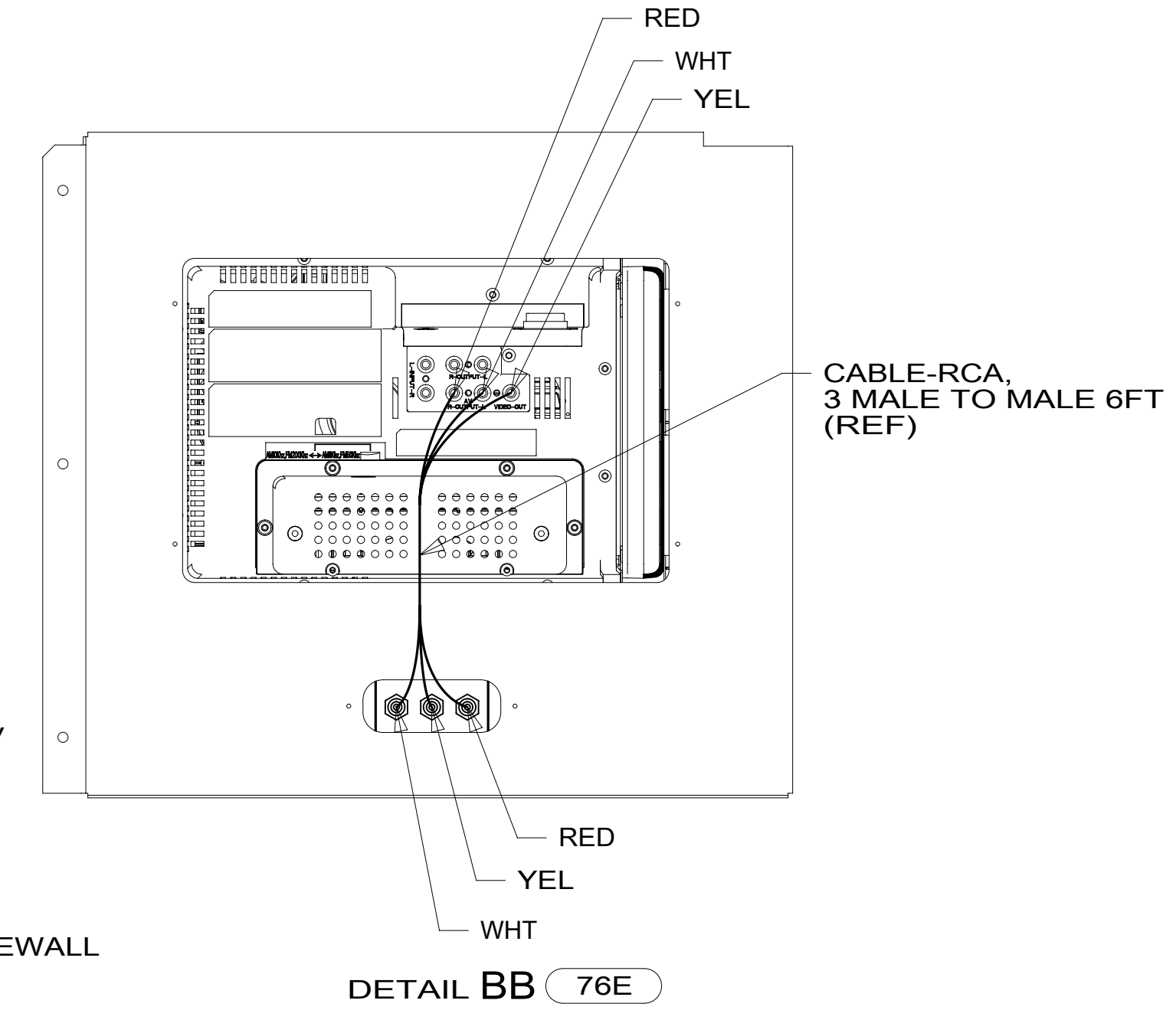
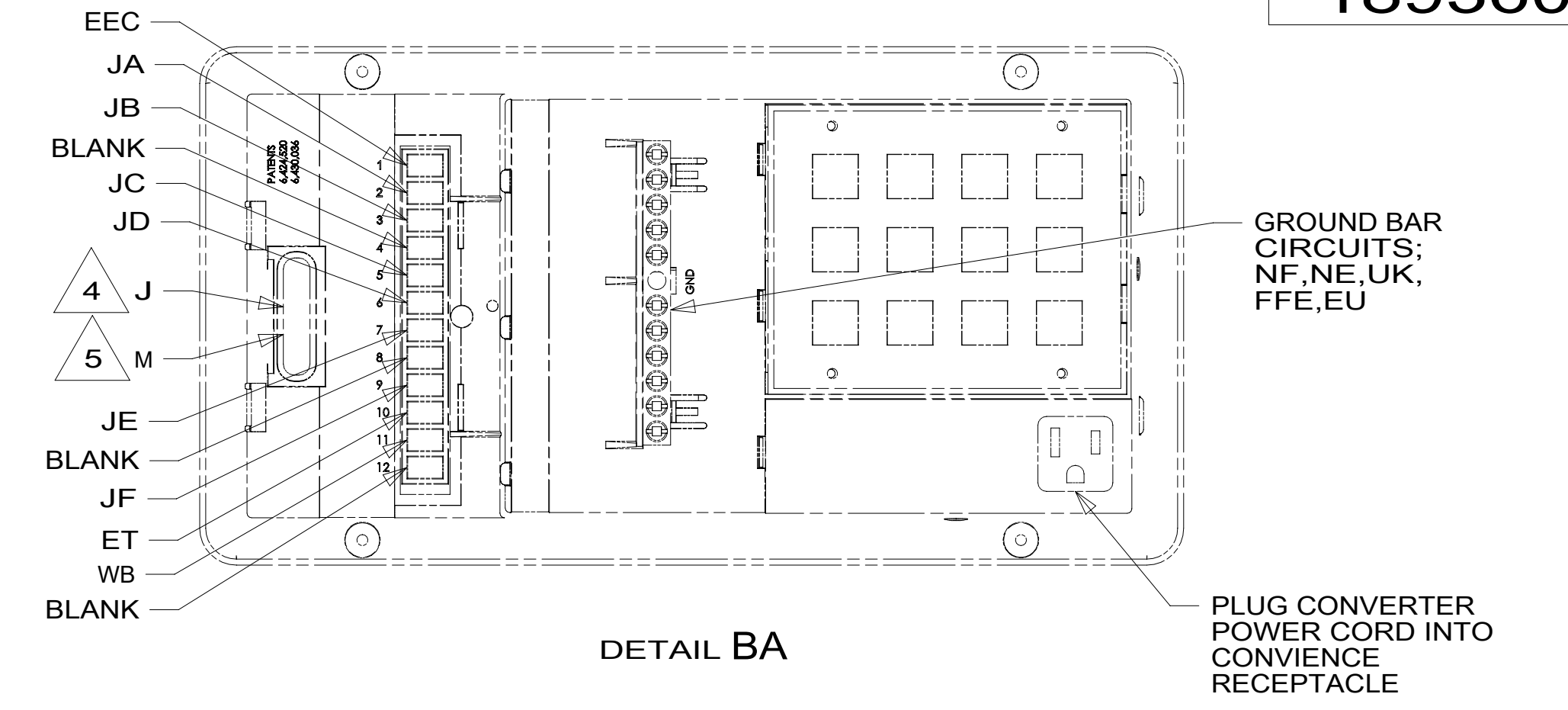
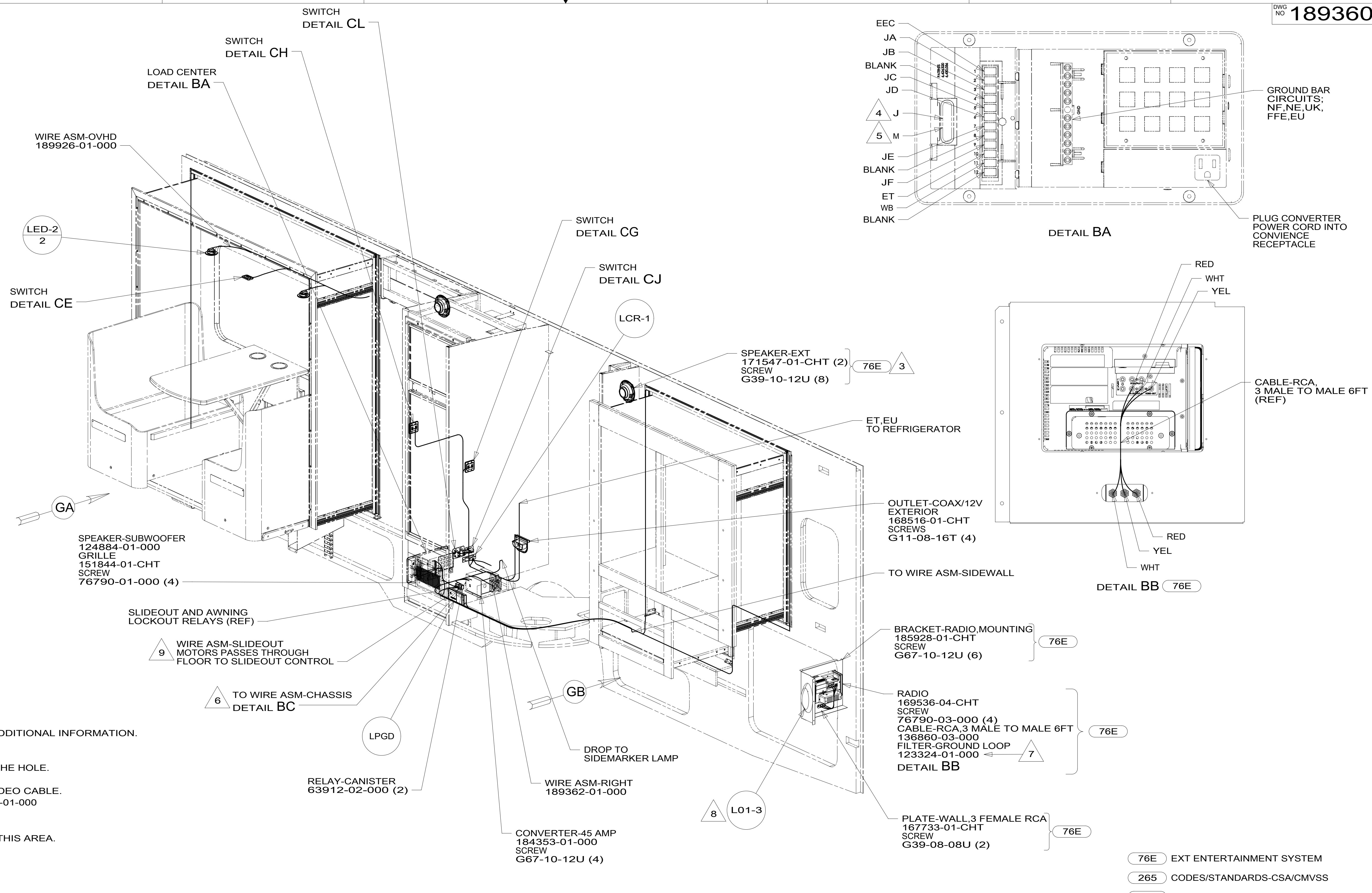
- 401 INVERTER-DC/AC, 1000 WATT
- 29Z A/C ROOF MOUNT-HEAT PUMP
- 1BT WATER HEATER, TANKLESS
- 53B WTR HTR-6GAL ELECTRIC/LP GAS
- 265 CODES/STANDARDS-CSA/CMVSS
- 1B1 CODES/STANDARDS USA

		COPYRIGHT 2014 WINNEBAGO INDUSTRIES, INC.	
DFTR	ORIG. DATE	ALL DIMENSIONS ARE IN MILLIMETERS	
CHKR		FIRST USED	
P.E.		15 730J	
M.E.		UNSPECIFIED TOLERANCES ARE:	
DSNR		WHOLE DIM (X) : 3 ONE-PLACE (X.X) : 1.5 TWO-PLACE (X.XX) : 0.50 ANGLE : 1°	
DO NOT SCALE DRAWING		REFER TO ES0018 FOR FASTENER TIGHTENING GUIDELINES	
TITLE: WIRING INSTL-BODY, 12V			
SHEET 1 OF 7	PART NO 189360	REV	
REF: 1		24-Mar-2015	

FOR ELECTRICAL TORQUE SPECIFICATIONS SEE DWG NO. 128783-01-000

FOR ELECTRICAL CALLOUTS SEE DWG NO. 121339-01-000

189360



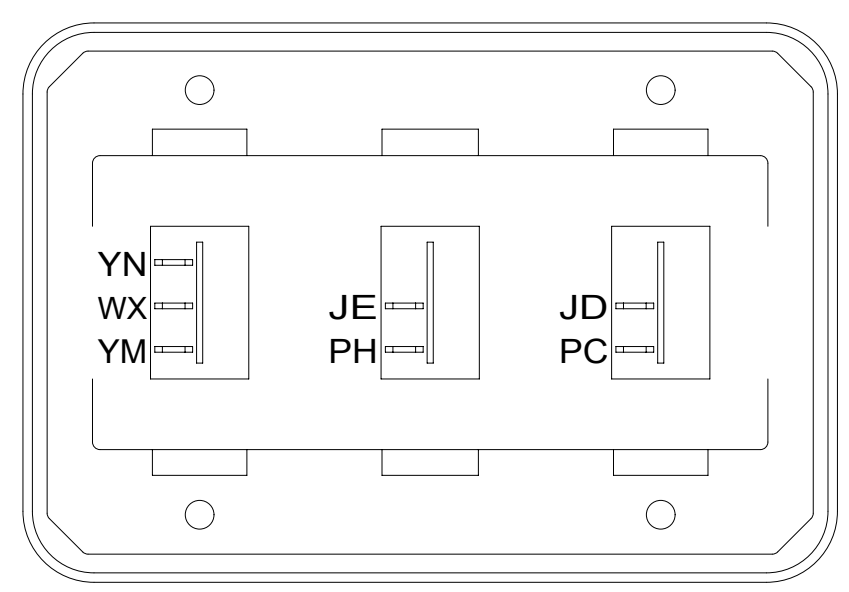
- 9 SEE WIRING INSTL-CHASSIS FOR ADDITIONAL INFORMATION.
 - 8 WITHOUT 76E PLACE LIGHT ON BACKWALL OVER THE HOLE.
 - 7 CONNECT IN-LINE WITH YELLOW VIDEO CABLE. WRAP BOTH ENDS WITH TAPE 8363-01-000 TO SECURE TO WIRE ASM.
 - 6 WIRE PASSES THROUGH FLOOR IN THIS AREA.
 - 5 CIRCUIT FROM WIRE ASM-COACH.
 - 4 CIRCUIT FROM WIRE ASM-CHASSIS.
 - 3 MOUNTED ON EXTERIOR SURFACE OF SIDEWALL.
2. WITH FRONT ENTERTAINMENT CENTER, SEE WIRING INSTL-TV/FRONT FOR ADDITIONAL INFORMATION.
1. AT MINIMUM ALL WIRES TO BE SUPPORTED AND SECURED PER CODE REQUIREMENTS. USE CLAMP 10495 OR 10497 OR WIRE TIE 8343 OR 108046 AND SCREW G67-XX-XXX OR G56-XX-XXX AS APPROPRIATE FOR INSTALLATION.

FOR ELECTRICAL TORQUE SPECIFICATIONS SEE DWG NO. 128783-01-000

X-X FOR ELECTRICAL CALLOUTS SEE DWG NO. 121339-01-000

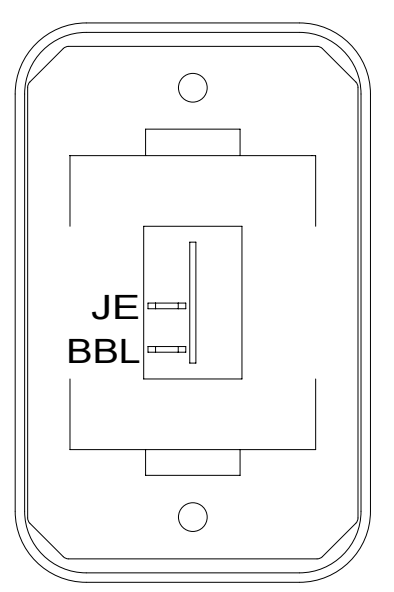
76E	EXT ENTERTAINMENT SYSTEM
265	CODES/STANDARDS-CSA/CMVSS
1B1	CODES/STANDARDS USA
1B1	265
FIRST USED	
15 730J	
DO NOT SCALE DRAWING	
WIRING INSTL-BODY, 12V	
SHEET 2	PART NO 189360 REV
1 24-Mar-2015	

* 189360 A *



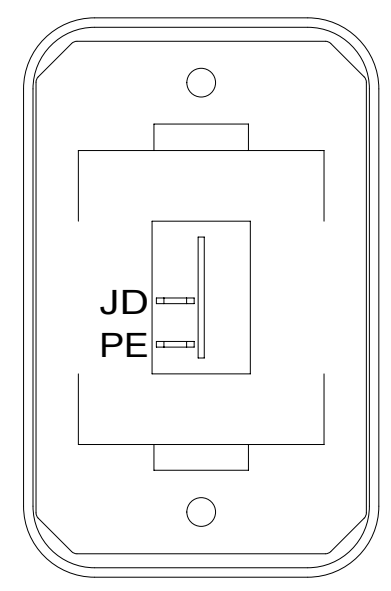
SWITCH-ROCKER
135740-01-CHT (2)
135740-02-CHT
SWITCH-BASE
135741-03-CHT
SWITCH-BEZEL
135742-03-CHT
SCREW
G11-08-08U (4)

DETAIL CA



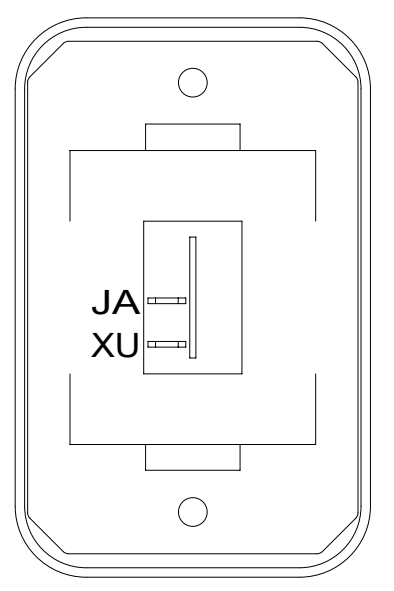
SWITCH-ROCKER
135740-01-CHT
SWITCH-BASE
135741-01-CHT
SWITCH-BEZEL
135742-01-CHT
SCREW
G11-08-08U (2)

DETAIL CE



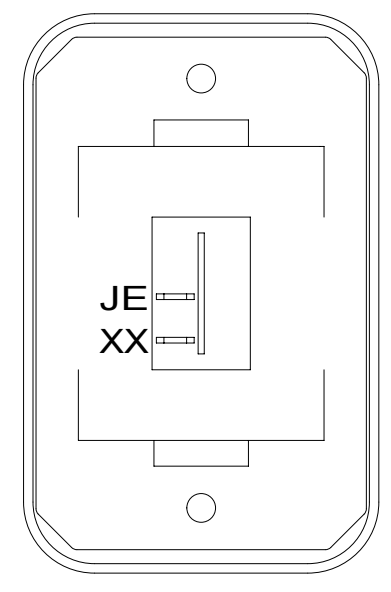
SWITCH-ROCKER
135740-01-CHT
SWITCH-BASE
135741-01-CHT
SWITCH-BEZEL
135742-01-CHT
SCREW
G11-08-08U (2)

DETAIL CB



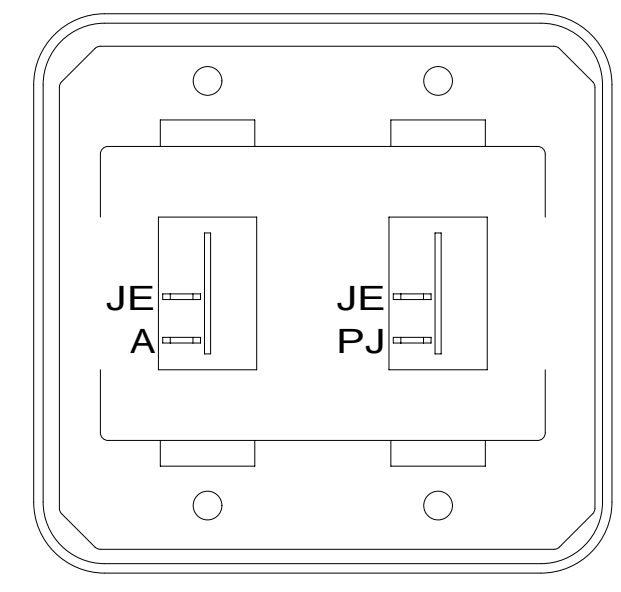
SWITCH-ROCKER
135740-01-CHT
SWITCH-BASE
135741-01-CHT
SWITCH-BEZEL
135742-01-CHT
SCREW
G11-08-08U (2)

DETAIL CF



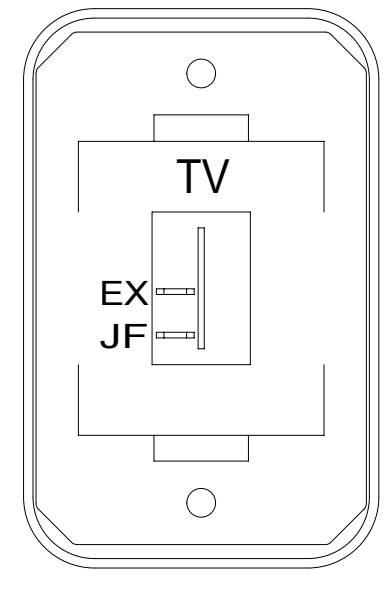
SWITCH-ROCKER
135740-01-CHT
SWITCH-BASE
135741-01-CHT
SWITCH-BEZEL
135742-01-CHT
SCREW
G11-08-08U (2)

DETAIL CC



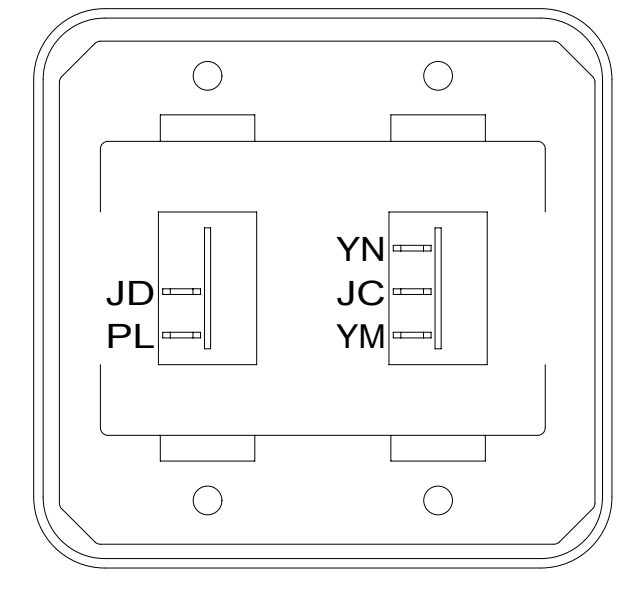
SWITCH-ROCKER
135740-01-CHT (2)
SWITCH-BASE
135741-02-CHT
SWITCH-BEZEL
135742-02-CHT
SCREW
G11-08-08U (4)

DETAIL CG



SWITCH-ROCKER
135740-01-CHT
SWITCH-BASE
135741-01-CHT
SWITCH-BEZEL
135742-45-CHT
SCREW
G11-08-08U (2)

DETAIL CD



SWITCH-ROCKER
135740-01-CHT
135740-02-CHT
SWITCH-BASE
135741-02-CHT
SWITCH-BEZEL
135742-02-CHT
SCREW
G11-08-08U (4)

DETAIL CH

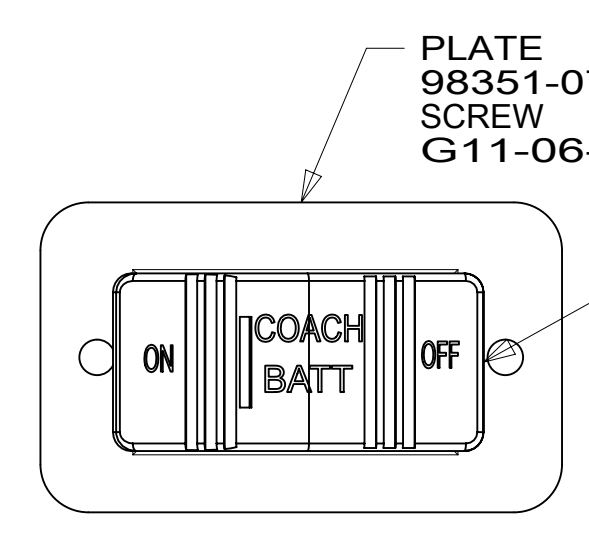
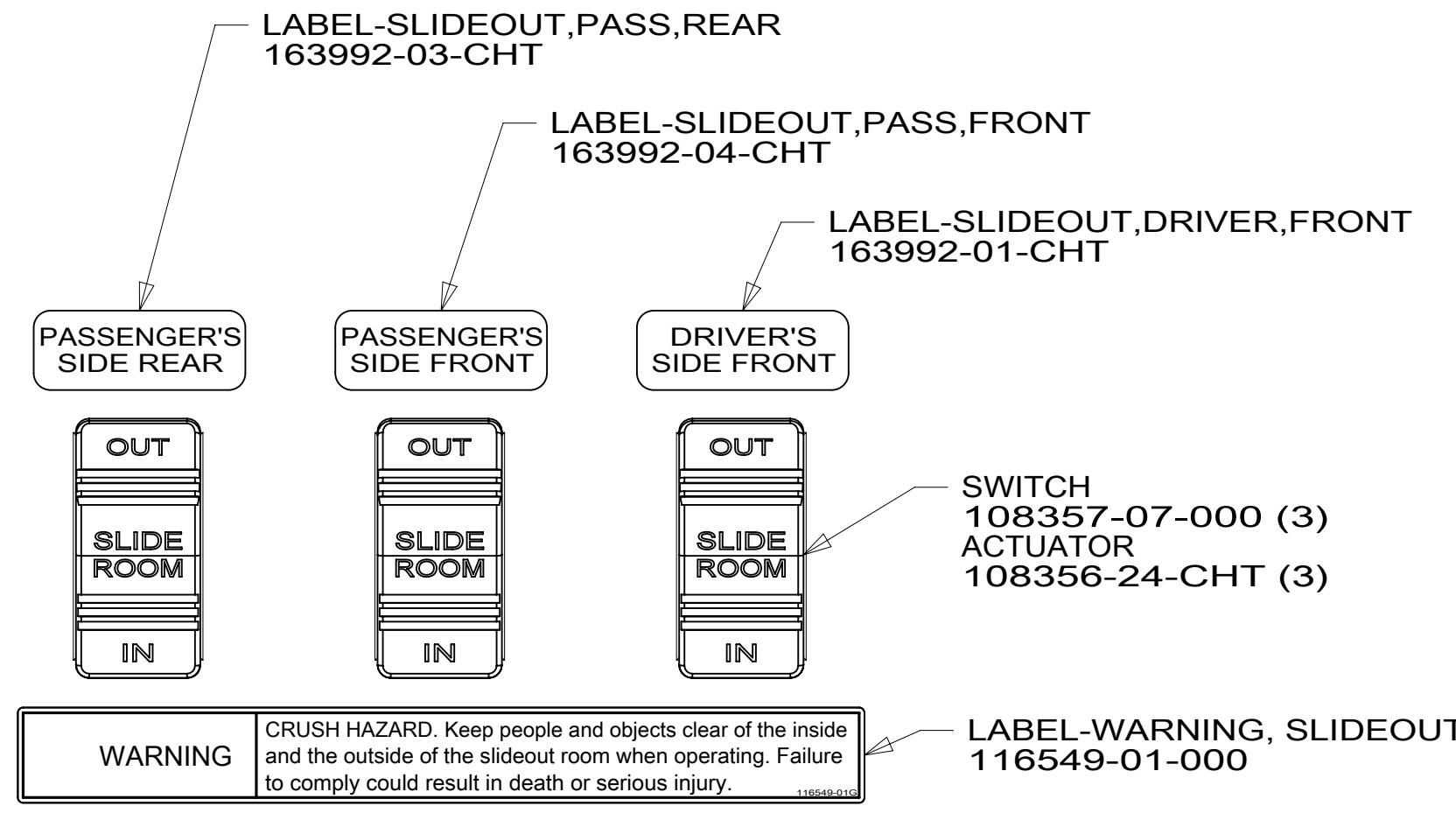


PLATE
98351-07-CHT
SCREW
G11-06-10U (4)

SWITCH-BATT DISC
108357-18-000
ACTUATOR
108356-19-CHT
(CIRCUITS LH,LJ,
LG,JP,JA)
WIRE ASM- THERM.
186796-01-000

DETAIL CJ



LABEL-SLIDEOUT,PASS,REAR
163992-03-CHT

LABEL-SLIDEOUT,PASS,FRONT
163992-04-CHT

LABEL-SLIDEOUT,DRIVER,FRONT
163992-01-CHT

SWITCH
108357-07-000 (3)
ACTUATOR
108356-24-CHT (3)

WARNING CRUSH HAZARD. Keep people and objects clear of the inside and the outside of the slideout room when operating. Failure to comply could result in death or serious injury.

LABEL-WARNING, SLIDEOUT
116549-01-000

DETAIL CK

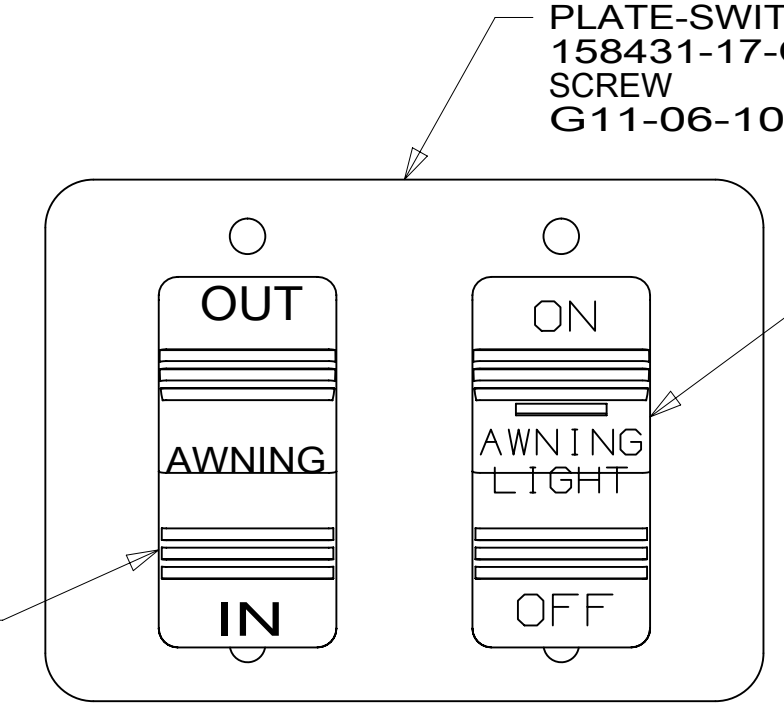


PLATE-SWITCH
158431-17-CHT
SCREW
G11-06-10U (4)

SWITCH-ROCKER
108357-14-000
ACTUATOR-SWITCH
108356-28-CHT

SWITCH-ROCKER
108357-06-000
ACTUATOR-SWITCH
108356-12-CHT

DETAIL CL

265 CODES/STANDARDS-CSA/CMVSS

1B1 CODES/STANDARDS USA

1B1 265

FIRST USED
15 730J

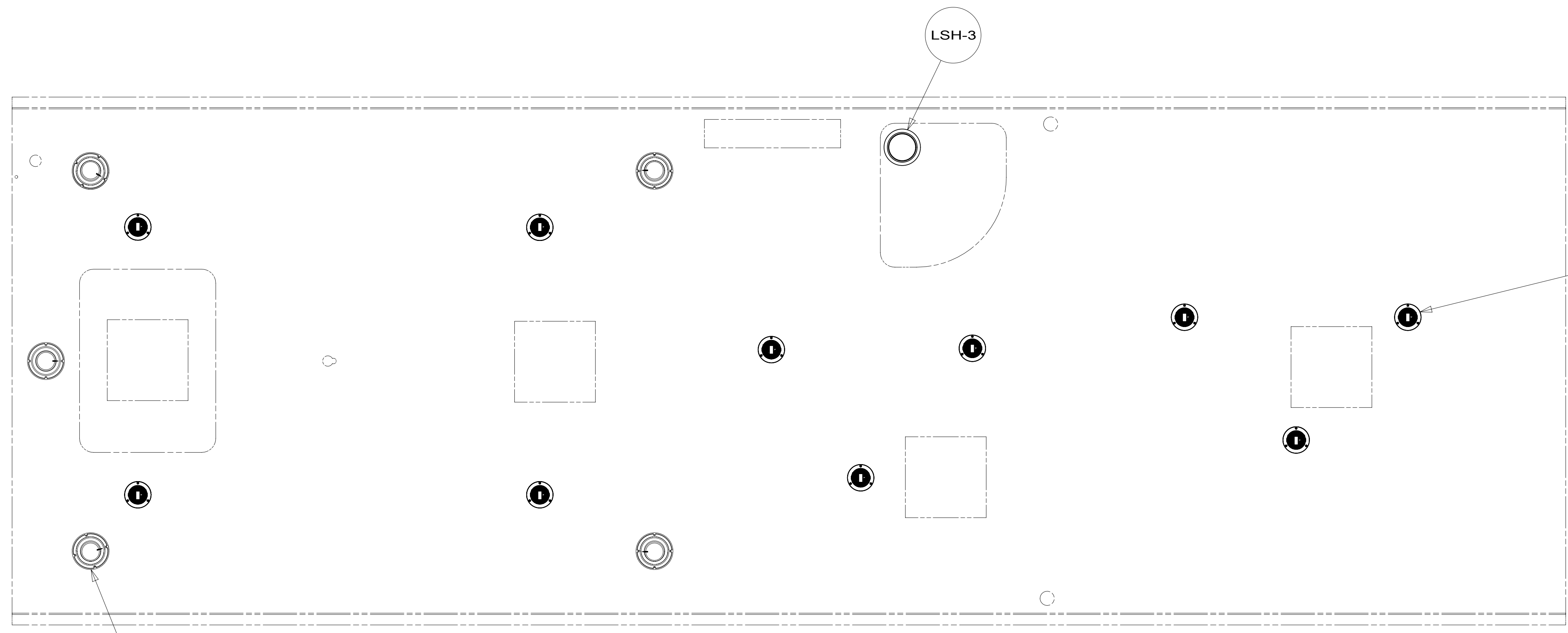
DO NOT SCALE DRAWING

TITLE:
WIRING INSTL-BODY, 12V

SHEET 3 PART NO **189360** REV

FOR ELECTRICAL
TORQUE
SPECIFICATIONS
SEE DWG NO.
128783-01-000

X-X
FOR
ELECTRICAL
CALLOUTS
SEE DWG NO.
121339-01-000



SPEAKER-ROUND
179783-01-CHT (5)
SCREW
G1208-12-170 (20)

LSH-3

LED-4
10

NOTES:
1. SEE ROOF ASSEMBLY FOR ADDITIONAL INFORMATION.

FOR ELECTRICAL
TORQUE
SPECIFICATIONS
SEE DWG NO.
128783-01-000

FOR ELECTRICAL
CALLOUTS
SEE DWG NO.
121339-01-000

265 CODES/STANDARDS-CSA/CMVSS

1B1 CODES/STANDARDS USA

1B1 265

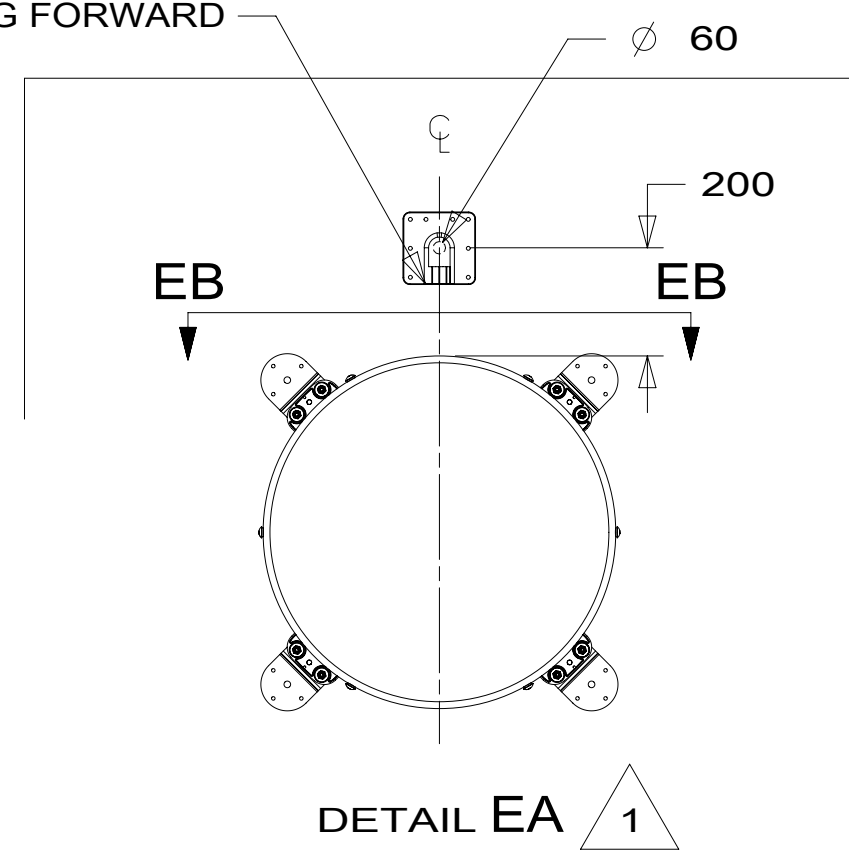
FIRST USED
15 730J

DO NOT SCALE DRAWING

TITLE:
WIRING INSTL-BODY, 12V

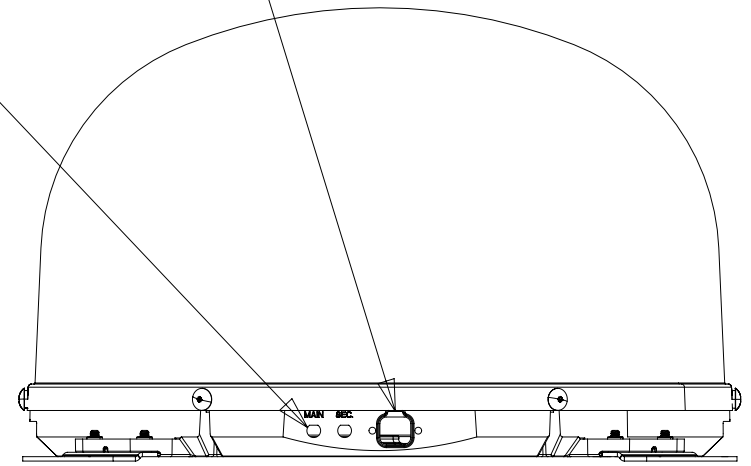
SHEET 4 PART NO **189360** REV

THE SATELLITE DISH WIRE CONNECTIONS ARE TO BE PLACED ON THE CENTERLINE OF THE MOTORHOME FACING FORWARD

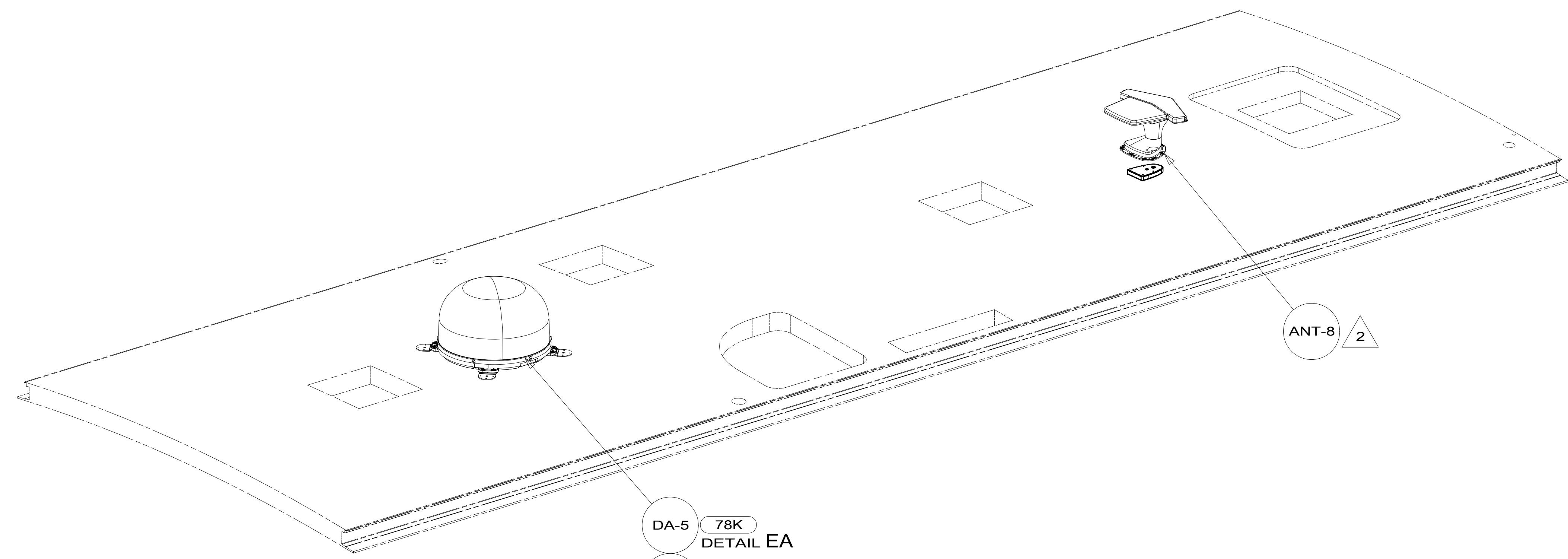


CONNECT 2-PIN HOUSING FROM ROOF ASM TO SATELLITE DISH HERE AND ADD CONVOLUTED TUBING

CONNECT CABLE ASM COAX (ORG) FROM ROOF ASM TO MAIN INPUT ON SATELLITE DISH



VIEW EB-EB



- DA-5 78K
DETAIL EA
- DI-3 48P
DETAIL EA

ANT-8 2

- NOTES:
- 3 ADD COAX CABLE 163598-04-000 & ADAPTOR-COAX 82134-01-000 TO ORG COAX TO MAKE CONNECTION WATER TIGHT.
 - 2 SEE ANTENNA INSTALLATION MANUAL FOR CORRECT INSTALLATION PROCEDURE.
 - 1 REMOVE ALL SHIPPING RESTRAINTS AND FIRMLY INSERT THE SUPPLIED PLUGS INTO THE APPROPRIATE SIZED HOLES AS SPECIFIED IN THE INSTALLATION PROCESS.

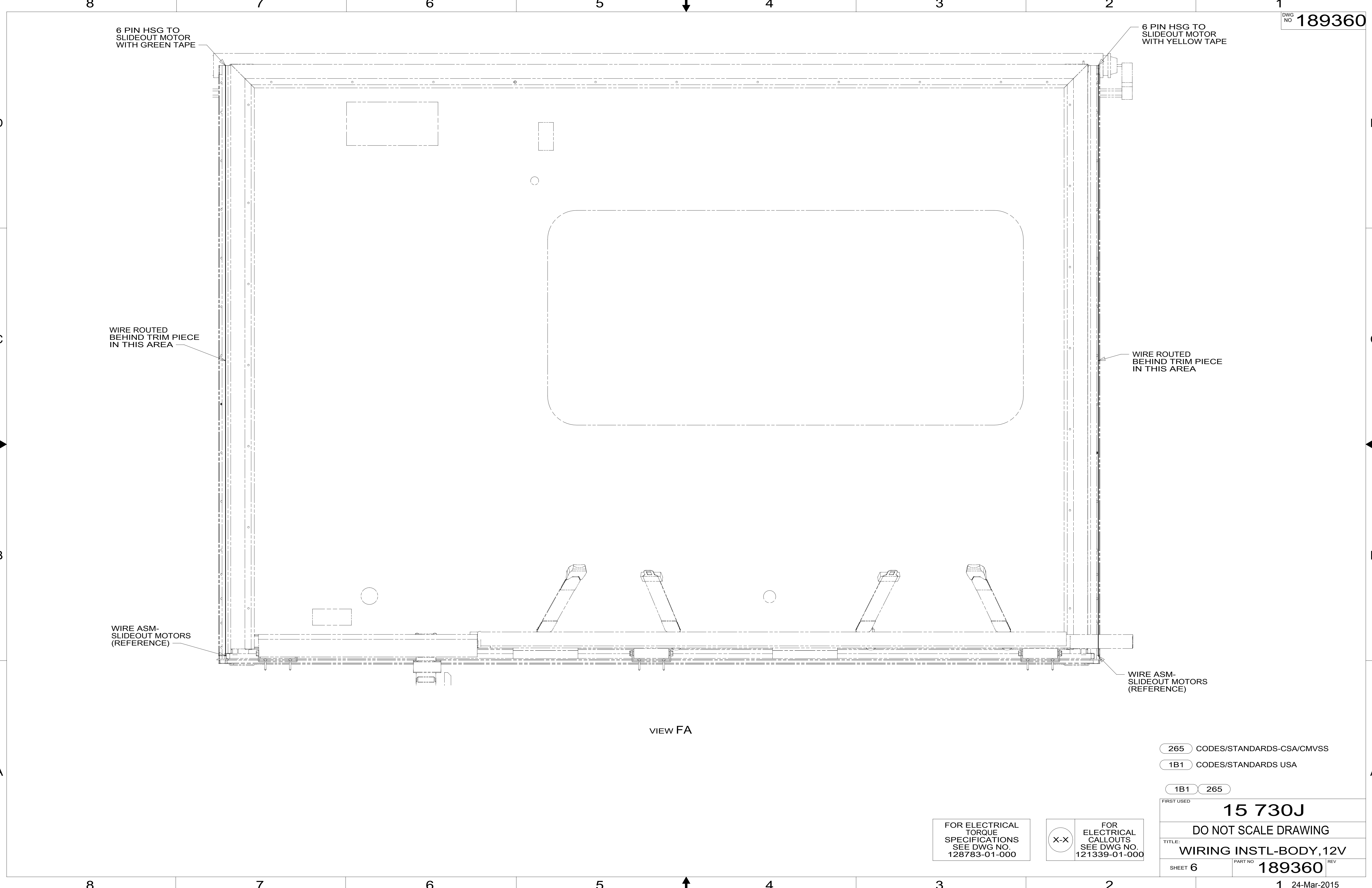
- 48P SAT TV SYSTEM IN-MOTION
- 78K SATELLITE TV SYSTEM AUTO
- 265 CODES/STANDARDS-CSA/CMVSS
- 1B1 CODES/STANDARDS USA

FIRST USED		15 730J	
DO NOT SCALE DRAWING			
TITLE: WIRING INSTL-BODY, 12V			
SHEET 5	PART NO	189360	REV

FOR ELECTRICAL TORQUE SPECIFICATIONS SEE DWG NO. 128783-01-000

FOR ELECTRICAL CALLOUTS SEE DWG NO. 121339-01-000

189360



6 PIN HSG TO SLIDEOUT MOTOR WITH GREEN TAPE

6 PIN HSG TO SLIDEOUT MOTOR WITH YELLOW TAPE

WIRE ROUTED BEHIND TRIM PIECE IN THIS AREA

WIRE ROUTED BEHIND TRIM PIECE IN THIS AREA

WIRE ASM-SLIDEOUT MOTORS (REFERENCE)

WIRE ASM-SLIDEOUT MOTORS (REFERENCE)

VIEW FA

265 CODES/STANDARDS-CSA/CMVSS

1B1 CODES/STANDARDS USA

1B1 265

FIRST USED 15 730J

DO NOT SCALE DRAWING

TITLE: WIRING INSTL-BODY, 12V

SHEET 6 PART NO 189360 REV

1 24-Mar-2015

FOR ELECTRICAL TORQUE SPECIFICATIONS SEE DWG NO. 128783-01-000

FOR ELECTRICAL CALLOUTS SEE DWG NO. 121339-01-000

189360

8

7

6

5

4

3

2

1

D

D

C

C

B

B

A

A

6 PIN HSG TO SLIDEOUT MOTOR WITH RED TAPE

6 PIN HSG TO SLIDEOUT MOTOR WITH ORANGE TAPE

WIRE ROUTED BEHIND TRIM PIECE IN THIS AREA

WIRE ROUTED BEHIND TRIM PIECE IN THIS AREA

WIRE ASM-SLIDEOUT MOTORS (REFERENCE)

WIRE ASM-SLIDEOUT MOTORS (REFERENCE)

VIEW GA

6 PIN HSG TO SLIDEOUT MOTOR WITH BROWN TAPE

6 PIN HSG TO SLIDEOUT MOTOR WITH LIGHT YELLOW TAPE

WIRE ROUTED BEHIND TRIM PIECE IN THIS AREA

WIRE ROUTED BEHIND TRIM PIECE IN THIS AREA

WIRE ASM-SLIDEOUT MOTORS (REFERENCE)

WIRE ASM-SLIDEOUT MOTORS (REFERENCE)

VIEW GB

265 CODES/STANDARDS-CSA/CMVSS

1B1 CODES/STANDARDS USA

1B1 265

FIRST USED 15 730J

DO NOT SCALE DRAWING

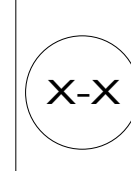
TITLE: WIRING INSTL-BODY, 12V

SHEET 7 PART NO 189360 REV

1 24-Mar-2015

FOR ELECTRICAL TORQUE SPECIFICATIONS SEE DWG NO. 128783-01-000

FOR ELECTRICAL CALLOUTS SEE DWG NO. 121339-01-000



189360