



DANGER

Danger of electrical shock, burns or death. Always remove all power sources before attempting any repair, service or diagnostic work. Power can be present from shore power, generator, inverter or battery. All power sources must be disabled and secured before performing any service.



CAUTION

If you lack the skills, tools or equipment to perform diagnostic or repair work leave such work to an authorized Winnebago Industries dealer or other qualified shop.

DRAWING NO.	MODEL	SHEETS
189356-01	727K	1,2,3,4
189356-02	727D	1,2,3,4
189356-03	730J	1,2,3,4

RELEASE	REV/DATE	DWG NO	189356
REV ZONE	REVISION RECORD	DATE	DFT-ORIG

		727K	727D	730J	
RED	1B1	136135-07-060	136135-07-060	136135-07-057	
	265	136136-07-060	136136-07-060	136136-07-057	
YEL	1B1	136131-05-040	136131-05-040	136131-05-015	
	265	136134-05-040	136134-05-040	136134-05-015	
BLK	1B1	136135-06-044 136135-06-069	136135-06-044 136135-06-069	136135-06-014 136135-06-023	53B 1BT
	265	136136-06-044 136136-06-069	136136-06-044 136136-06-069	136136-06-014 136136-06-023	53B 1BT
BLK-2	1B1	136135-22-042	136135-22-042	136135-22-027	53B
	265	136136-22-042	136136-22-042	136136-22-027	53B
BRN	1B1	136131-03-011	136131-03-020	136131-03-010	2
	265	136134-03-011	136134-03-020	136134-03-010	2
BRN-2	1B1	136131-19-060	136131-19-245	136131-19-057	2
	265	136134-19-060	136134-19-245	136134-19-057	2
BLU	1B1	136131-02-190	136131-02-190	136131-02-144	
	265	136134-02-190	136134-02-190	136134-02-144	
WHT	1B1	136135-09-036	136135-09-036	136135-09-031	53B
	265	136136-09-036	136136-09-036	136136-09-031	53B
MAIN	1B1	136137-01-105	136137-01-105	136137-01-063	
	265	136138-01-105	136138-01-105	136138-01-063	

		727K	727D	730J	
GENERATOR CABLE ASM	1B1	164957-09-064	164957-09-064	164957-09-069	
	265	164957-10-064	164957-10-064	164957-10-069	
THROW IN #1	1B1	136131-19-007	136131-19-007	136131-19-007	3 2
	265	136134-19-007	136134-19-007	136134-19-007	3 2
THROW IN #2	1B1	136131-03-018	136131-03-018	136131-03-007	2 4 401
	265	136134-03-018	136134-03-018	136134-03-007	2 4 401
THROW IN #3	1B1	-----	-----	-----	
	265	-----	-----	-----	
THROW IN #4	1B1	136131-19-032	-----	136131-19-032	
	265	136134-19-032	-----	136134-19-032	
THROW IN #5	1B1	136131-19-018	136131-19-018	136131-19-009	2 4 401
	265	136134-19-018	136134-19-018	136134-19-009	2 4 401
THROW IN #6	1B1	136131-19-013	-----	136131-19-013	49M
	265	136134-19-013	-----	136134-19-013	49M
ATS GND		136145-01-015	136145-01-015	136145-01-012	
GROUND		136145-02-022	136145-02-022	136145-02-015	
WIRE ASM-INVERTER EXTENSION		-----	-----	182730-01-000	401

- 1BT WATER HEATER, TANKLESS
- 53B WTR HTR-6GAL ELECTRIC/LP GAS
- 49M AIR SLEEP SYSTEM-QUEEN SIZE
- 401 INVERTER-DC/AC, 1000 WATT
- 265 CODES/STANDARDS-CSA/CMVSS
- 1B1 CODES/STANDARDS USA

WINNEBAGO COPYRIGHT 2014 WINNEBAGO INDUSTRIES, INC.

DFT-ORIG	ORIG. DATE
CHKR	ALL DIMENSIONS ARE IN MILLIMETERS
P.E.	
M.E.	FIRST USED
DSNR	15 700-SERIES

UNSPECIFIED TOLERANCES ARE:
 WHOLE DIM (X) : 3
 ONE-PLACE (X.X) : 1.5
 TWO-PLACE (X.XX) : 0.50
 ANGLE : 1'

THIRD ANGLE PROJECTION

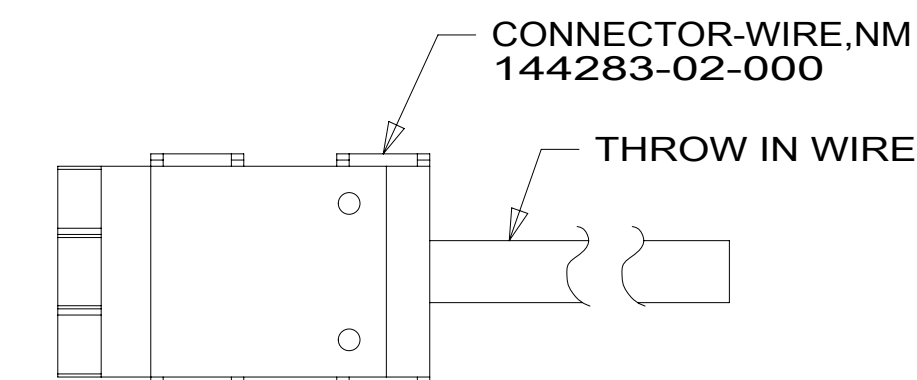
DO NOT SCALE DRAWING REFER TO ES0018 FOR FASTENER TIGHTENING GUIDELINES

TITLE: **LOAD CENTER/ATS ASM**

SHEET **1** OF **4** PART NO **189356** REV

- 4 FOR INVERTER INFORMATION SEE SHEET 4.
- 3 WITH BLACK PERMANENT MARKER, IDENTIFY MOLEX HOUSING WITH #1.
- 2 FOR CONNECTOR INSTALLATION SEE DETAIL AA.

NOTES:
 1. ALL GROUND WIRES TO BE COVERED WITH TUBING 8041-02-000.



DETAIL AA

FOR ELECTRICAL TORQUE SPECIFICATIONS SEE DWG NO. 128783-01-000

FOR ELECTRICAL CALLOUTS SEE DWG NO. 121339-01-000

189356

8 7 6 5 4 3 2 1

D

D

C

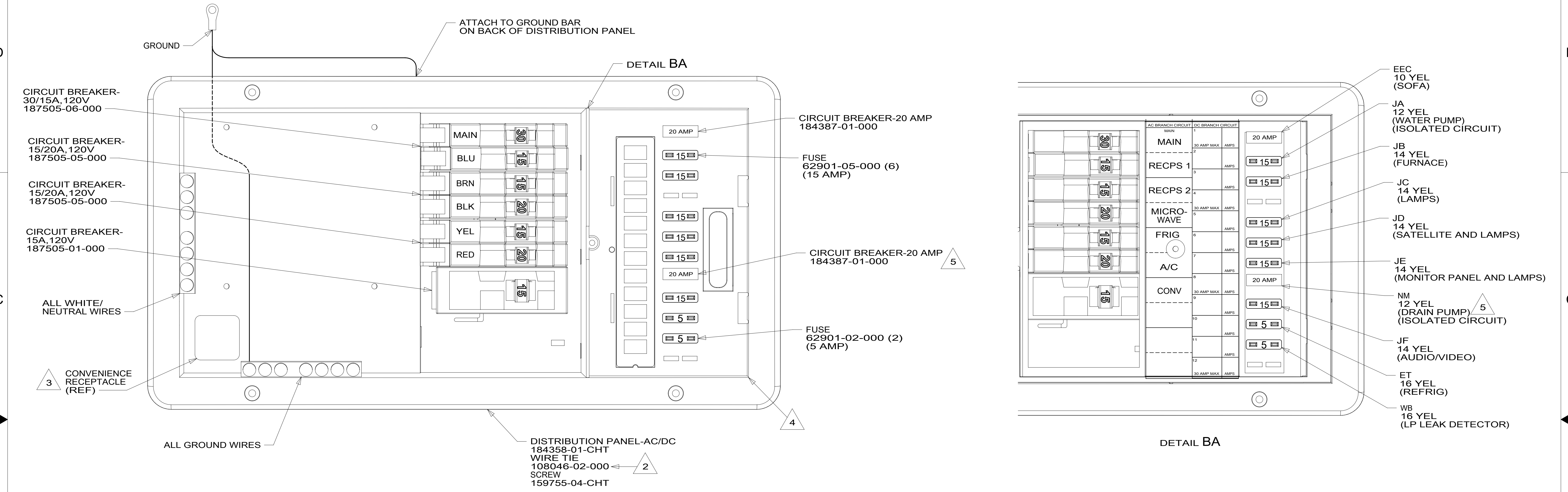
C

B

B

A

A



- 5 USED ONLY ON THE 727K AND 727D. NOT USED ON THE 730J.
- 4 SEE WIRING INSTL-BODY, 12V FOR ADDITIONAL INFORMATION.
- 3 CONNECT BLACK WIRE FROM CONVENIENCE RECEPTACLE TO DEDICATED CIRCUIT BREAKER.
- 2 ATTACH TO UNUSED SCREW HOLE ON BACK SIDE OF PANEL TO SECURE WIRES.
1. ALL GROUND WIRES TO BE COVERED WITH TUBING 8041-02-000.

NOTES:

FOR ELECTRICAL TORQUE SPECIFICATIONS SEE DWG NO. 128783-01-000

FOR ELECTRICAL CALLOUTS SEE DWG NO. 121339-01-000

265 CODES/STANDARDS-CSA/CMVSS

1B1 CODES/STANDARDS USA

1B1 265

FIRST USED

15 700-SERIES

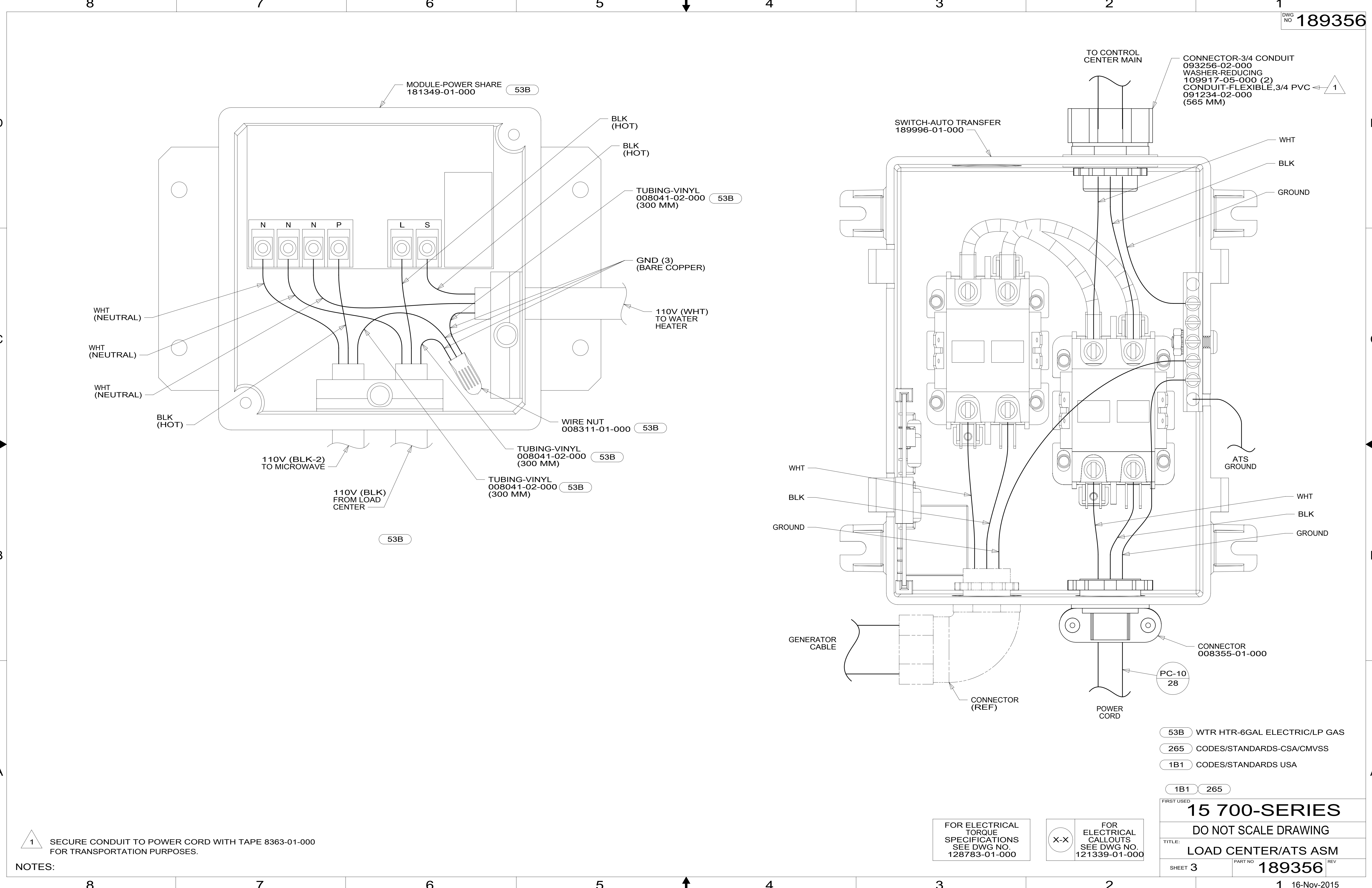
DO NOT SCALE DRAWING

TITLE: **LOAD CENTER/ATS ASM**

SHEET 2 PART NO **189356** REV

8 7 6 5 4 3 2 1 16-Nov-2015

189356



1 SECURE CONDUIT TO POWER CORD WITH TAPE 8363-01-000 FOR TRANSPORTATION PURPOSES.

NOTES:

FOR ELECTRICAL TORQUE SPECIFICATIONS SEE DWG NO. 128783-01-000

X-X FOR ELECTRICAL CALLOUTS SEE DWG NO. 121339-01-000

- 53B WTR HTR-6GAL ELECTRIC/LP GAS
- 265 CODES/STANDARDS-CSA/CMVSS
- 1B1 CODES/STANDARDS USA

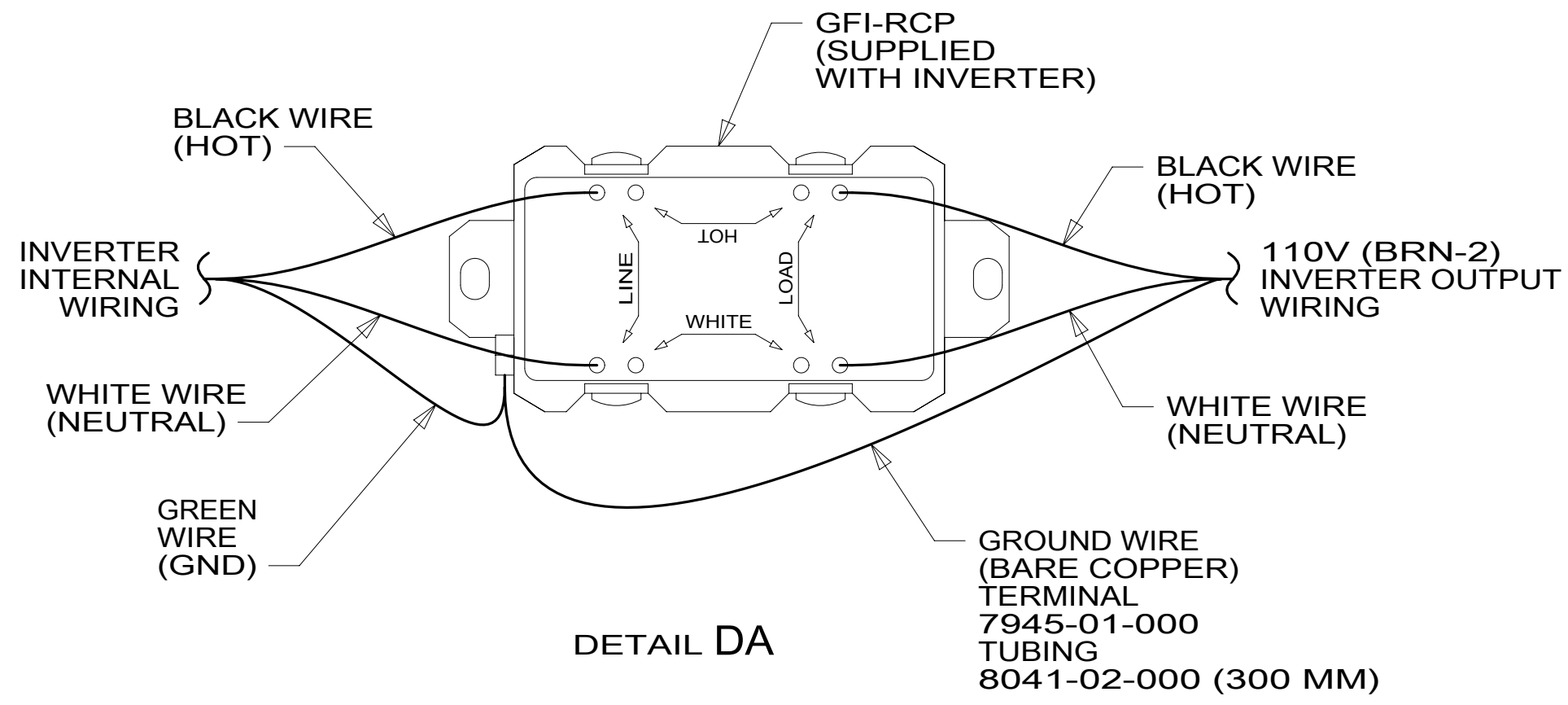
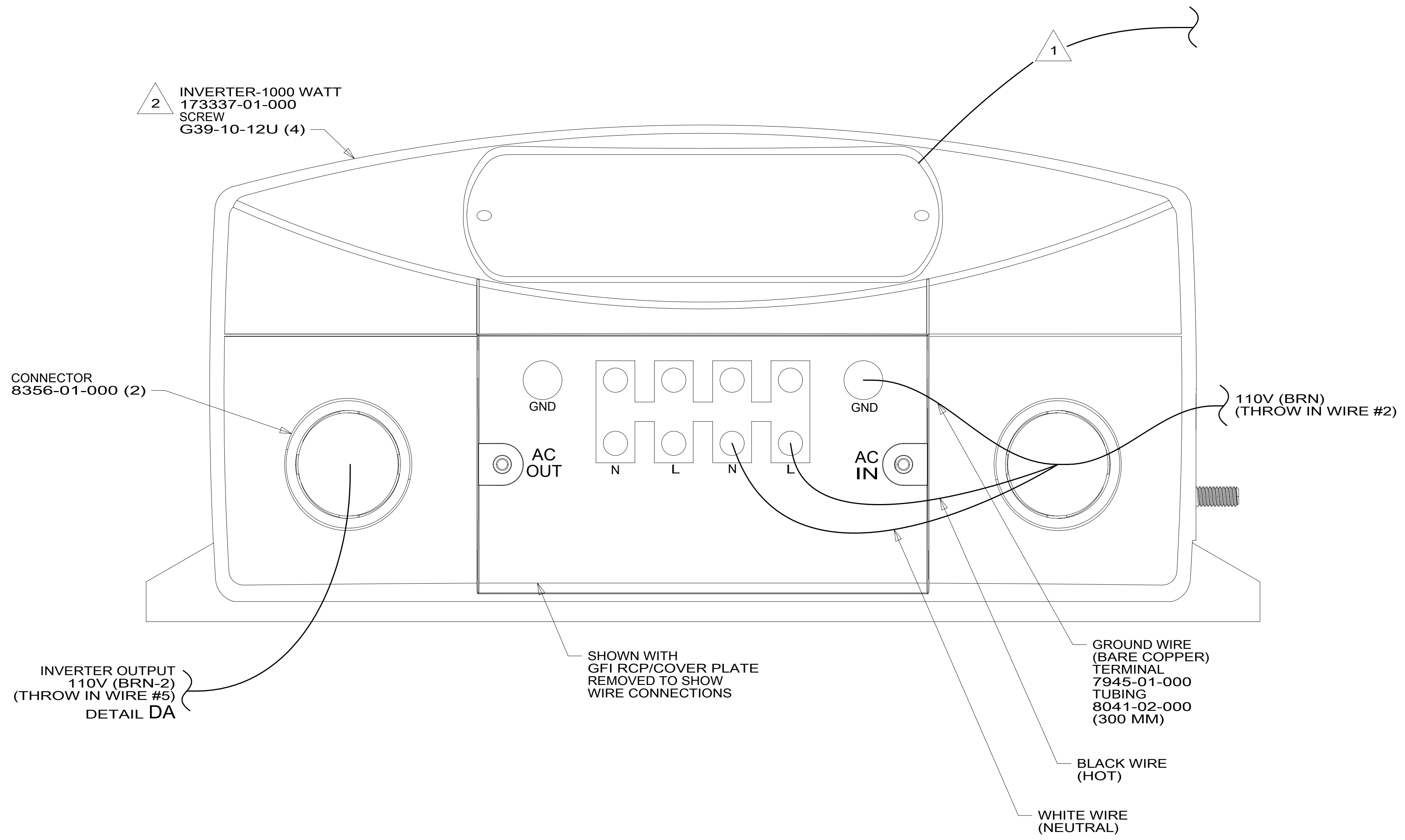
1B1 265

FIRST USED
15 700-SERIES

DO NOT SCALE DRAWING

TITLE: **LOAD CENTER/ATS ASM**

SHEET 3 PART NO **189356** REV



2 INVERTER SUPPLIED WITH REMOTE PANEL.
SEND PANEL TO MANUFACTURING LINE.

1 ON 730C COVER REMOTE PANEL COMMUNICATION CABLE WITH
CONDUIT-CONVOLUTE 41953-06-000 (4600 MM) STARTING 100 MM
FROM INVERTER. SECURE BOTH ENDS WITH TAPE 8363-01-000.

NOTES:

FOR ELECTRICAL
TORQUE
SPECIFICATIONS
SEE DWG NO.
128783-01-000

FOR
ELECTRICAL
CALLOUTS
SEE DWG NO.
121339-01-000

- 401 INVERTER-DC/AC, 1000 WATT
- 265 CODES/STANDARDS-CSA/CMVSS
- 1B1 CODES/STANDARDS USA

1B1 265 401

FIRST USED
15 700-SERIES

DO NOT SCALE DRAWING

TITLE:
LOAD CENTER/ATS ASM

SHEET 4 PART NO **189356** REV

*189356 *A