



DANGER

Danger of electrical shock, burns or death. Always remove all power sources before attempting any repair, service or diagnostic work. Power can be present from shore power, generator, inverter or battery. All power sources must be disabled and secured before performing any service.

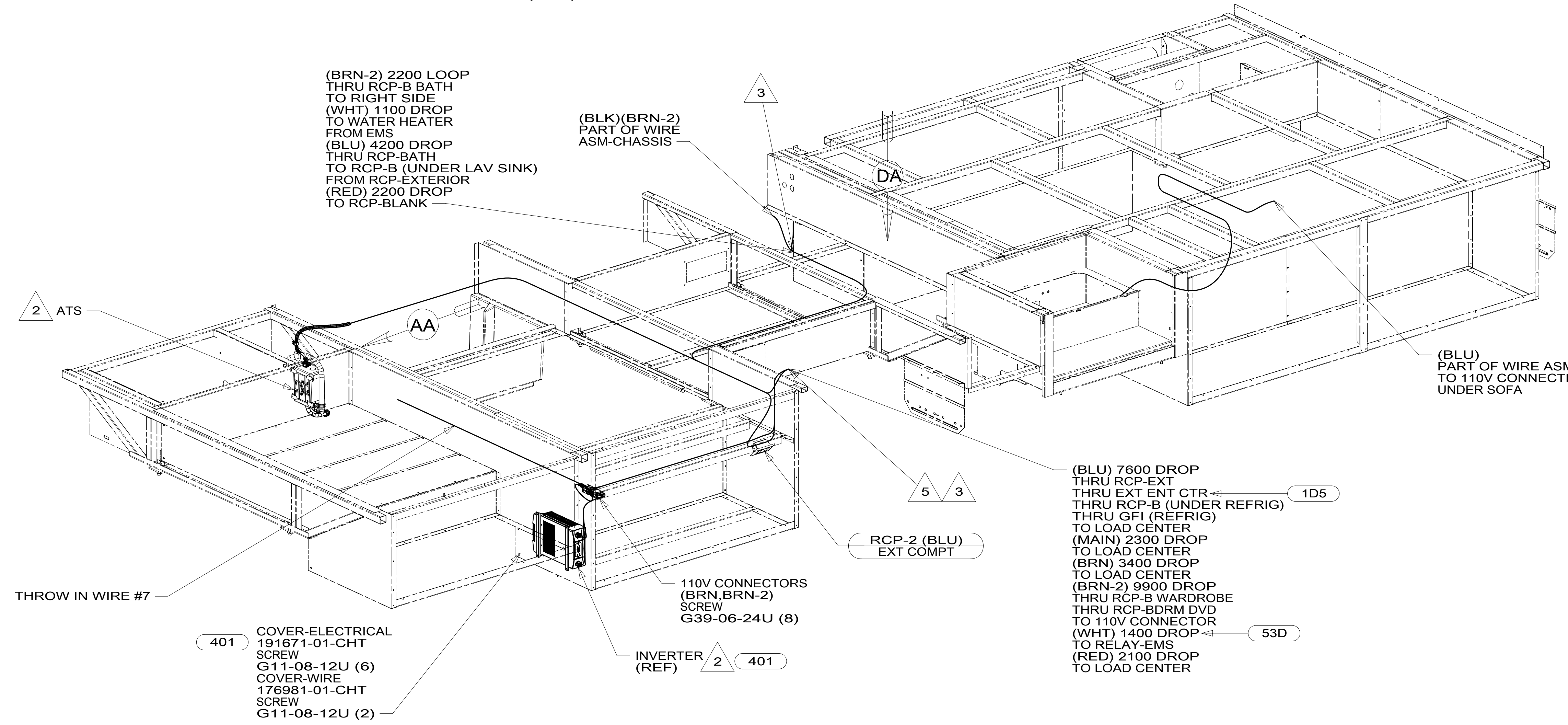
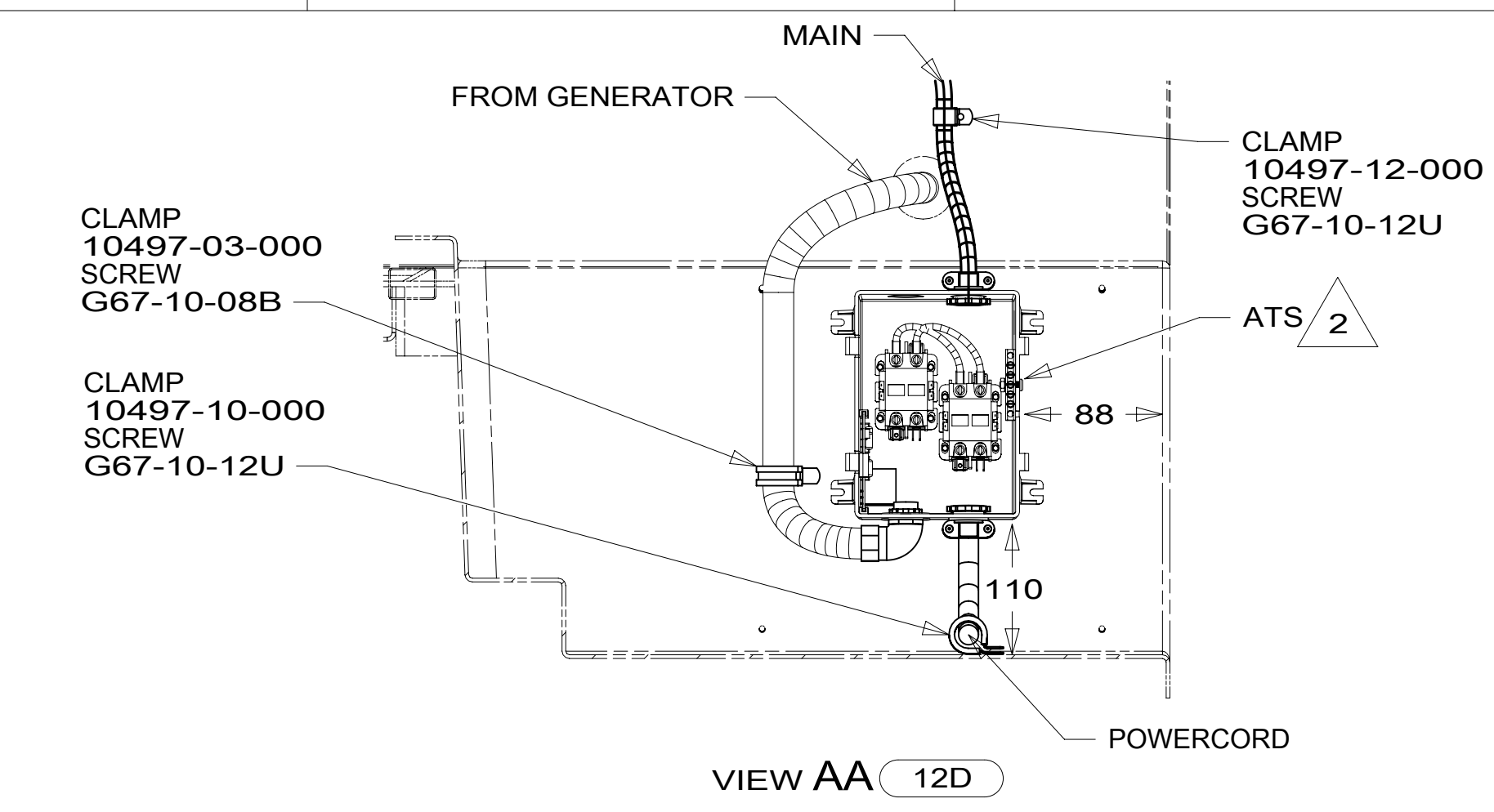


CAUTION

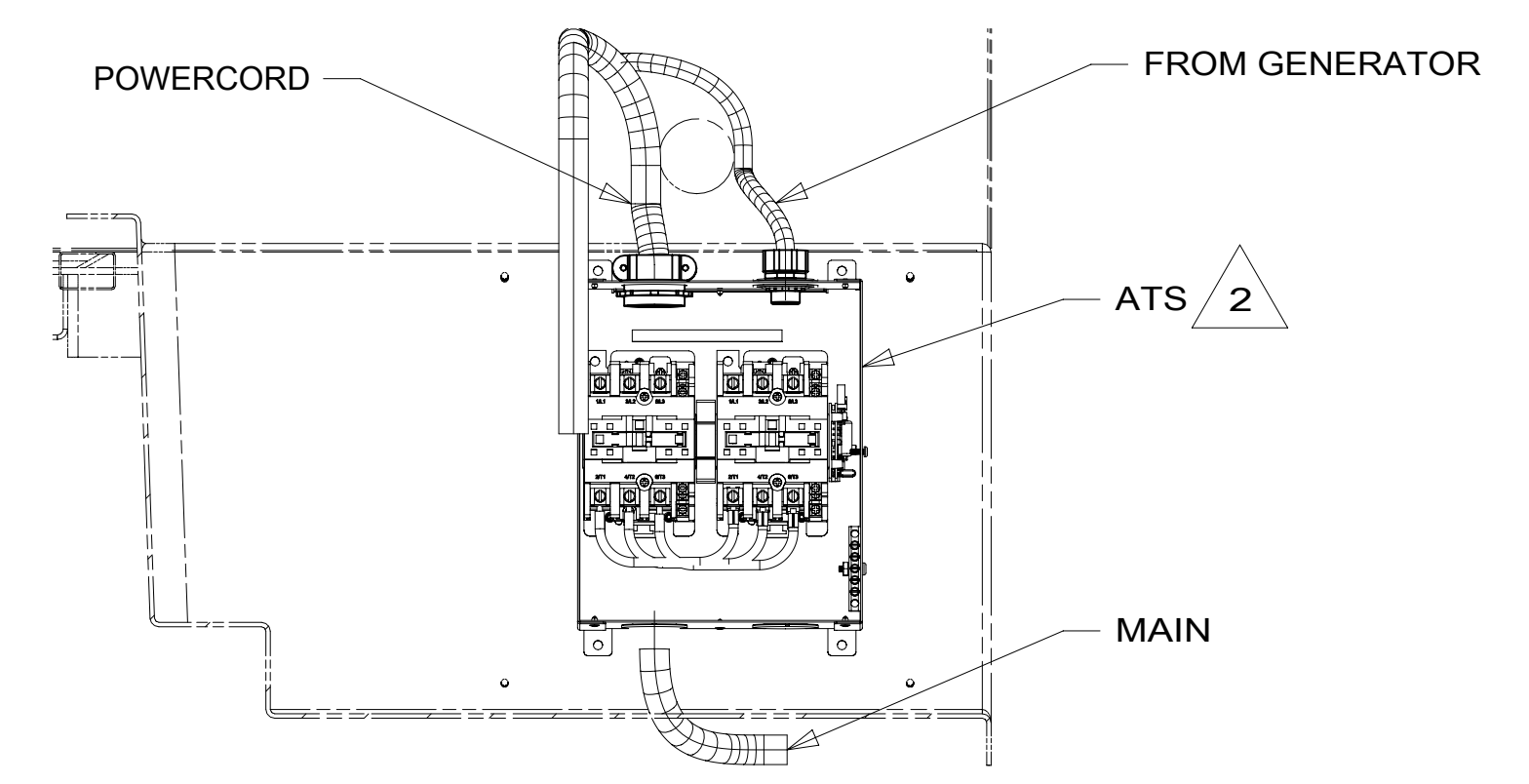
If you lack the skills, tools or equipment to perform diagnostic or repair work leave such work to an authorized Winnebago Industries dealer or other qualified shop.

DRAWING NO.	FEATURE
189352-01	-----
189352-11	1B1 12D
189352-12	1B1 078
189352-15	265 12D
189352-16	265 078

RELEASE A REV/DATE
 DWG NO. 189352
 REV ZONE REVISION RECORD DATE DFR-ORIG



- 078 ALL WEATHER UPGRADE PACKAGE
- 401 INVERTER-DC/AC, 1000 WATT
- 53D WTR HTR-6GAL/ELE/LP/MOTORAID
- 1D5 ENTERTAINMENT CENTR/EXT W/CD
- 12D ELECTRICAL SYSTEM 30 AMP
- 265 CODES/STANDARDS-CSA/CMVSS
- 1B1 CODES/STANDARDS USA
- 1B1 265



- 5 ROUTE GROUND WIRE FROM LOAD CENTER AND MODULE-ALS THROUGH FLOOR IN THIS AREA AND CONNECT TO GROUND STUD OF FRAME ASM.
4. AT MINIMUM ALL WIRES TO BE SUPPORTED AND SECURED PER CODE REQUIREMENTS. USE CLAMP 10495 OR 10497 OR WIRE TIE 8343 OR 108046 AND SCREW G67-XX-XXX OR G56-XX-XXX AS APPROPRIATE FOR INSTALLATION.
- 3 WIRE ROUTED THROUGH FLOOR IN THIS AREA.
- 2 SEE LOAD CENTER/ATS FOR ADDITIONAL INFORMATION.
1. WIRES ROUTED UNDER FLOOR.

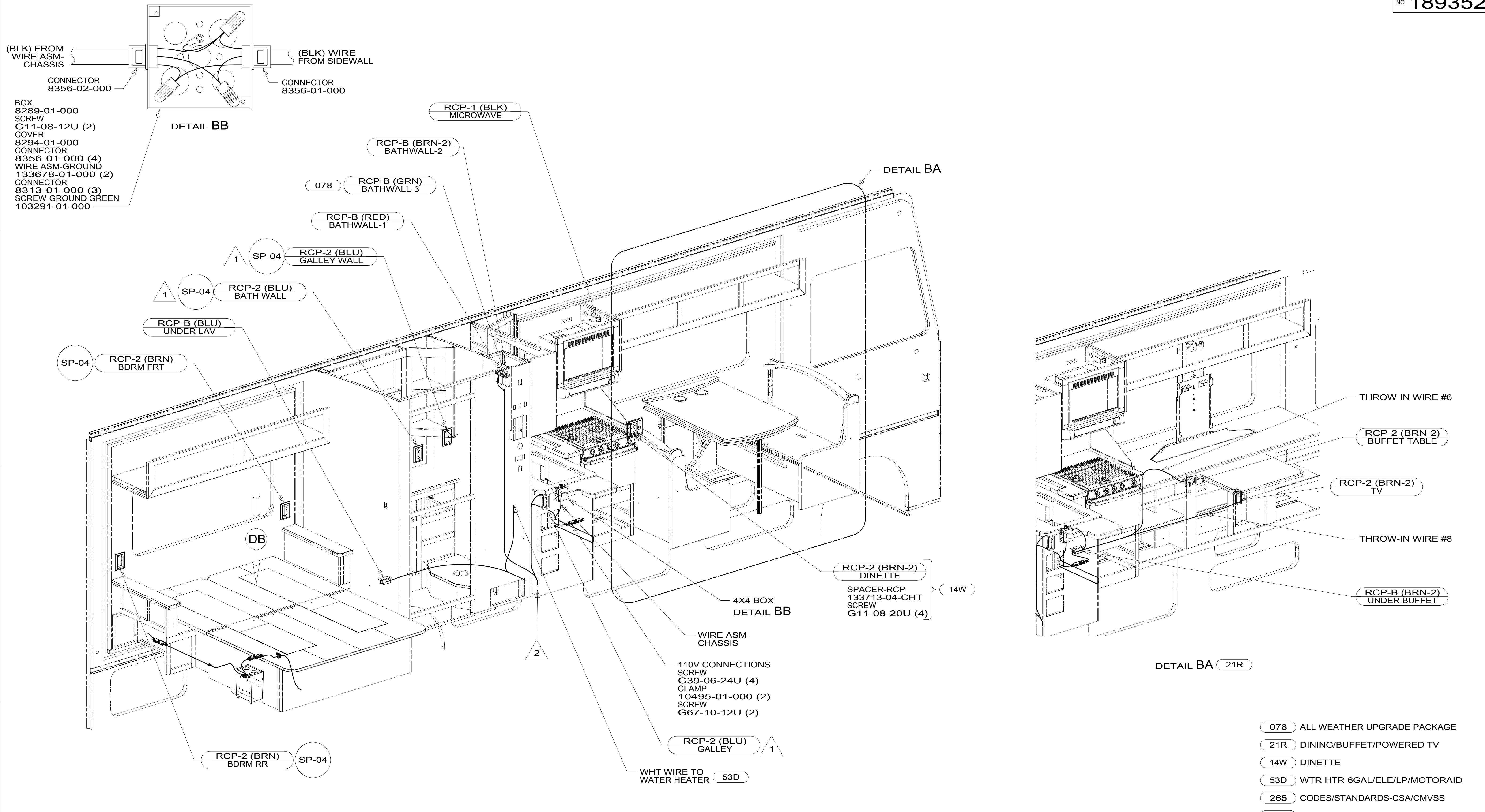
FOR ELECTRICAL TORQUE SPECIFICATIONS SEE DWG NO. 128783-01-000

FOR ELECTRICAL CALLOUTS SEE DWG NO. 121339-01-000

WINNEBAGO COPYRIGHT 2014 WINNEBAGO INDUSTRIES, INC.

DFTR	ORIG. DATE
CHKR	ALL DIMENSIONS ARE IN MILLIMETERS
P.E.	
M.E.	
DSNR	
FIRST USED	
15 E30T	
UNSPECIFIED TOLERANCES ARE:	
WHOLE DIM (X)	: 3
ONE-PLACE (X.X)	: 1.5
TWO-PLACE (X.XX)	: 0.50
ANGLE	: 1'
THIRD ANGLE PROJECTION	
DO NOT SCALE DRAWING	REFER TO ES0018 FOR FASTENER TIGHTENING GUIDELINES
TITLE: WIRING INSTL-BODY, 110V	
SHEET 1 OF 6	PART NO. 189352 REV
REF:	1 22-Dec-2014

189352



- BOX 8289-01-000
- SCREW G11-08-12U (2)
- COVER 8294-01-000
- CONNECTOR 8356-01-000 (4)
- WIRE ASM-GROUND 133678-01-000 (2)
- CONNECTOR 8313-01-000 (3)
- SCREW-GROUND GREEN 103291-01-000

3. AT MINIMUM ALL WIRES TO BE SUPPORTED AND SECURED PER CODE REQUIREMENTS. USE CLAMP 10495 OR 10497 OR WIRE TIE 8343 OR 108046 AND SCREW G67-XX-XXX OR G56-XX-XXX AS APPROPRIATE FOR INSTALLATION.

- 2 WIRE ROUTED THRU FLOOR IN THIS AREA.
- 1 WIRE ROUTED IN SIDEWALL.

NOTES:

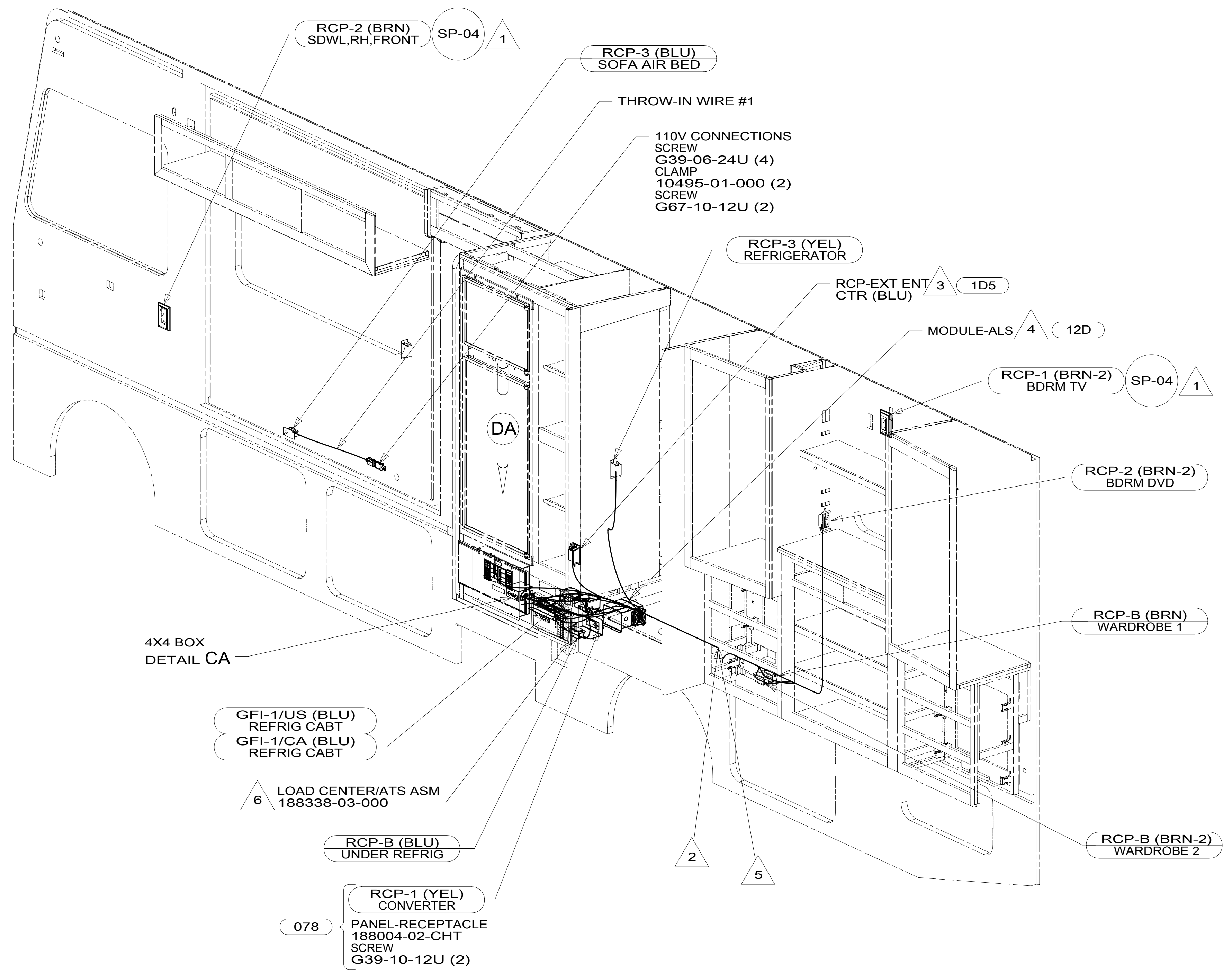
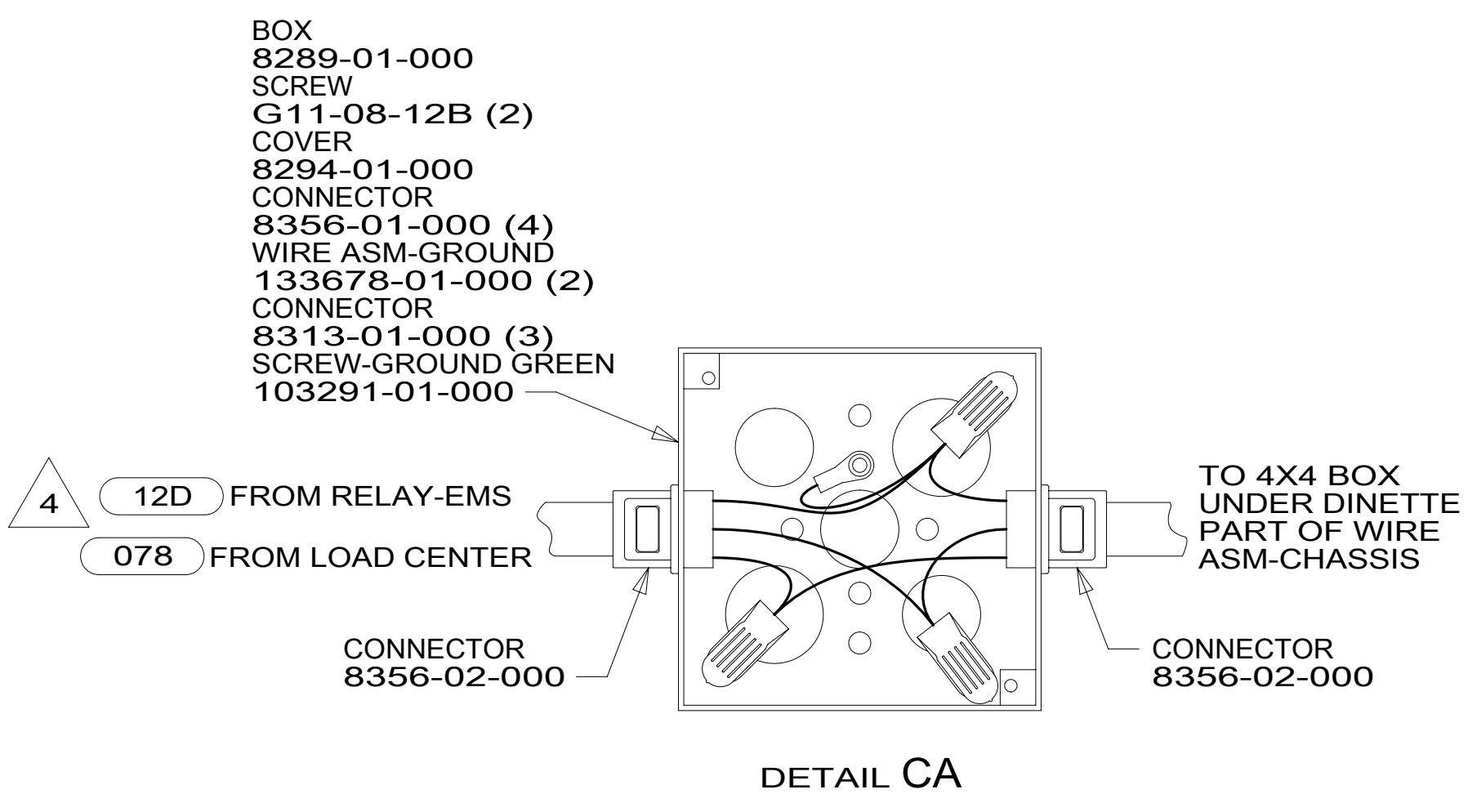
- 078 ALL WEATHER UPGRADE PACKAGE
- 21R DINING/BUFFET/POWERED TV
- 14W DINETTE
- 53D WTR HTR-6GAL/ELE/LP/MOTORAID
- 265 CODES/STANDARDS-CSA/CMVSS
- 1B1 CODES/STANDARDS USA

1B1	265
FIRST USED	
15 E30T	
DO NOT SCALE DRAWING	
TITLE: WIRING INSTL-BODY, 110V	
SHEET 2	PART NO 189352 REV
1 22-Dec-2014	

FOR ELECTRICAL TORQUE SPECIFICATIONS SEE DWG NO. 128783-01-000

FOR ELECTRICAL CALLOUTS SEE DWG NO. 121339-01-000

189352



7. AT MINIMUM ALL WIRES TO BE SUPPORTED AND SECURED PER CODE REQUIREMENTS. USE CLAMP 10495 OR 10497 OR WIRE TIE 8343 OR 108046 AND SCREW G67-XX-XXX OR G56-XX-XXX AS APPROPRIATE FOR INSTALLATION.

6 LOAD CENTER GROUND WIRES MUST BE ATTACHED DIRECTLY TO CHASSIS GROUND.

5 WIRES ROUTED THROUGH FLOOR IN THIS AREA.

4 SEE LOAD CENTER/ATS ASM FOR ADDITIONAL INFORMATION.

3 SEE ENTERTAINMENT CENTER COMPL FOR ADDITIONAL INFORMATION.

2 ROUTE GROUND WIRE (8 GA GRN) FROM LOAD CENTER THROUGH FLOOR TO GROUND BOLT ON CHASSIS FRAME RAIL.

1 WIRE ROUTED IN SIDEWALL.

NOTES:

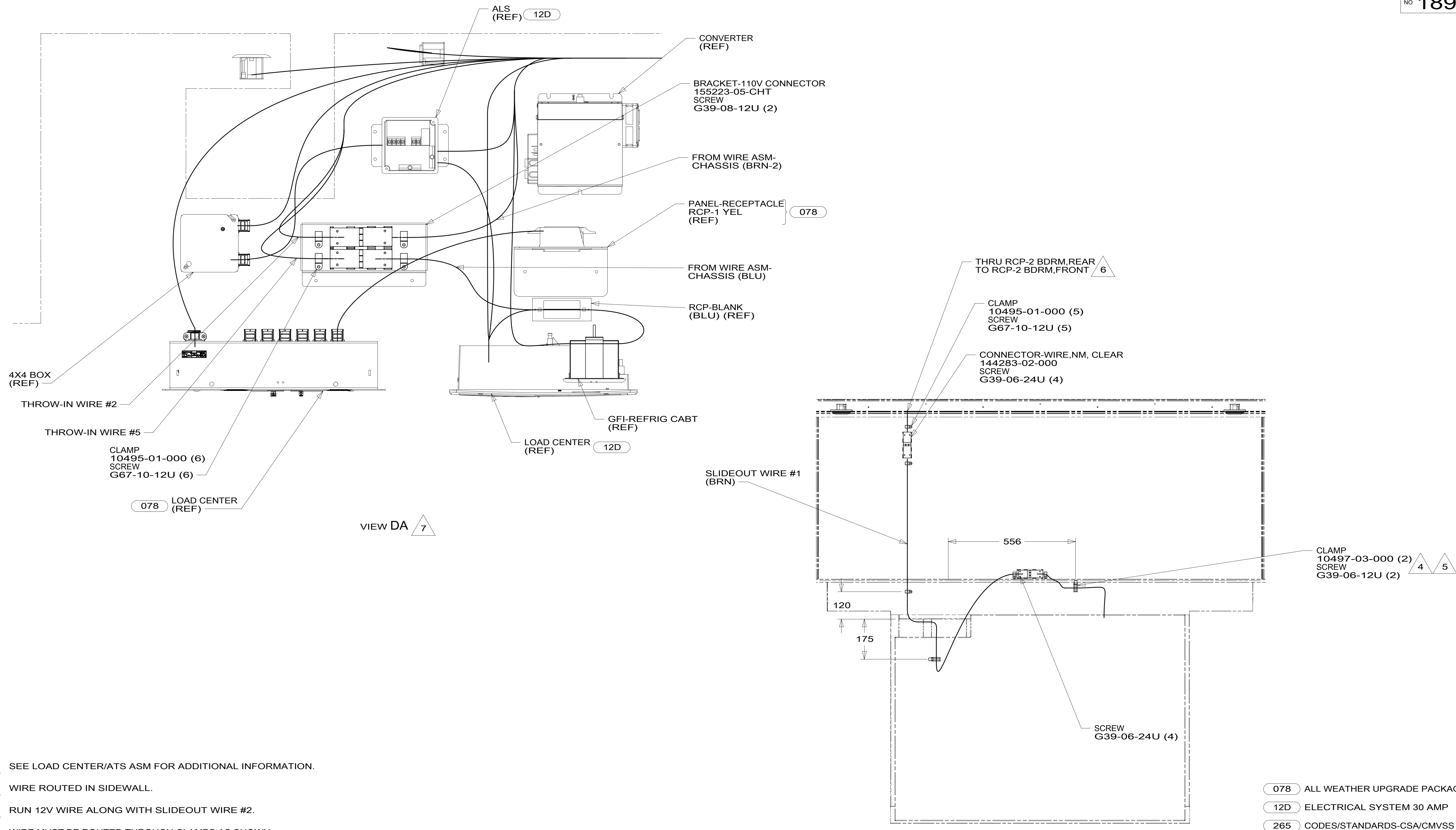
- 12D ELECTRICAL SYSTEM 30 AMP
- 078 ALL WEATHER UPGRADE PACKAGE
- 53D WTR HTR-6GAL/ELE/LP/MOTORAID
- 1D5 ENTERTAINMENT CENTR/EXT W/CD
- 265 CODES/STANDARDS-CSA/CMVSS
- 1B1 CODES/STANDARDS USA

1B1	265
FIRST USED	
15 E30T	
DO NOT SCALE DRAWING	
TITLE: WIRING INSTL-BODY, 110V	
SHEET 3	PART NO 189352 REV
1 22-Dec-2014	

FOR ELECTRICAL TORQUE SPECIFICATIONS SEE DWG NO. 128783-01-000

FOR ELECTRICAL CALLOUTS SEE DWG NO. 121339-01-000

*189352 *A



- NOTES:
- 7 SEE LOAD CENTER/ATS ASM FOR ADDITIONAL INFORMATION.
 - 6 WIRE ROUTED IN SIDEWALL.
 - 5 RUN 12V WIRE ALONG WITH SLIDEOUT WIRE #2.
 - 4 WIRE MUST BE ROUTED THROUGH CLAMPS AS SHOWN.
 - 3 CONVOLUTE TUBING STOPS HERE AND BRAIDED SLEEVING STARTS.
 - 2 WITH SLIDEOUT ROOM IN, ALLOW 400 MM OF WIRE BETWEEN U-CHANNEL, WIRE SUPPORT AND SUPPORT ASM. WIRE FOR PROPER OPERATION.
 - 1 USE WIRE TIE 8343-02-000 AND SECURE WIRE HARNESS TO WIRE TRAYS.

DETAIL DB

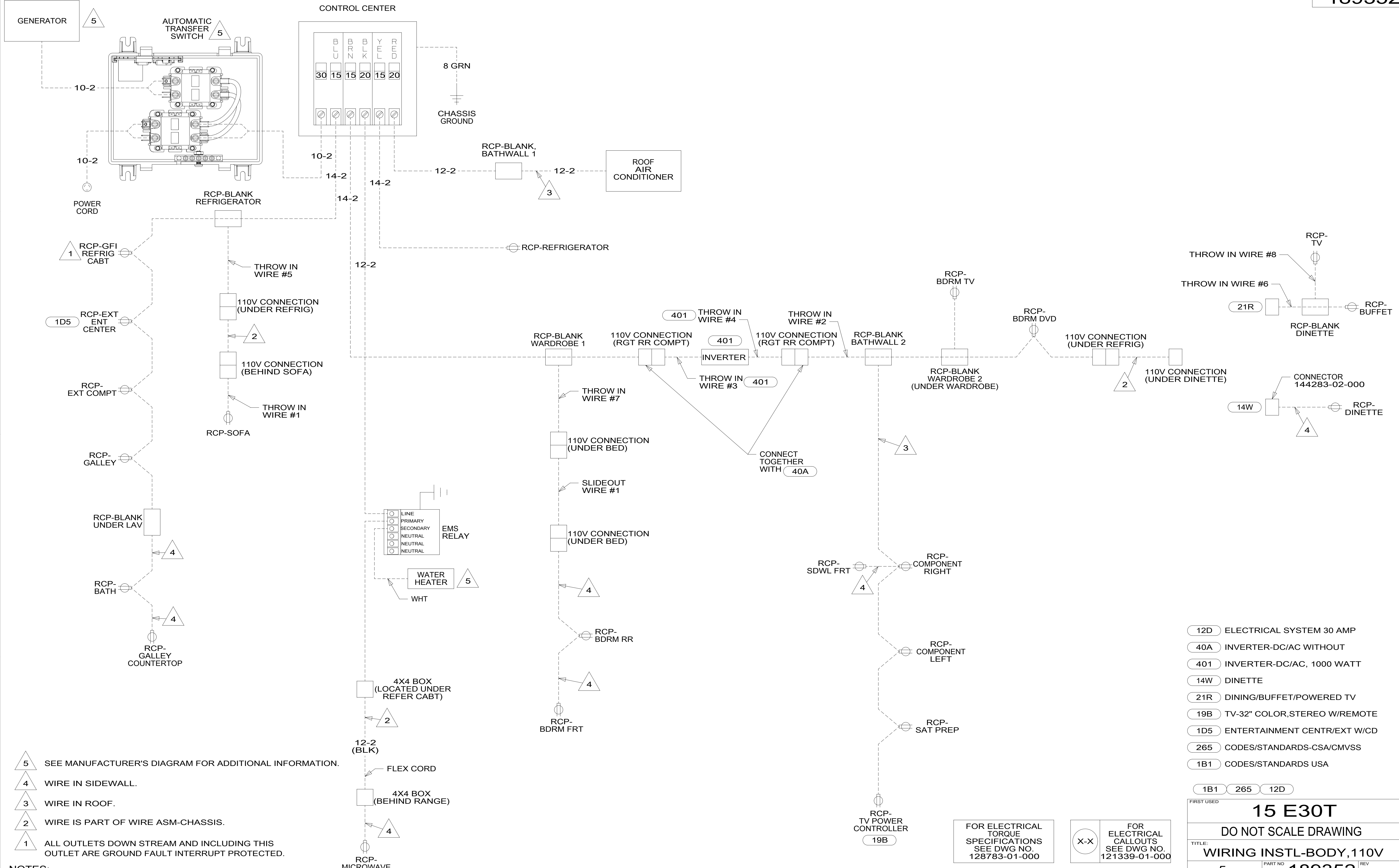
FOR ELECTRICAL TORQUE SPECIFICATIONS SEE DWG NO. 128783-01-000

FOR ELECTRICAL CALLOUTS SEE DWG NO. 121339-01-000

- 078 ALL WEATHER UPGRADE PACKAGE
- 12D ELECTRICAL SYSTEM 30 AMP
- 265 CODES/STANDARDS-CSA/CMVSS
- 1B1 CODES/STANDARDS USA

FIRST USED	
15 E30T	
DO NOT SCALE DRAWING	
TITLE: WIRING INSTL-BODY, 110V	
SHEET 4	PART NO 189352 REV
1 22-Dec-2014	

189352



- NOTES:
- 5 SEE MANUFACTURER'S DIAGRAM FOR ADDITIONAL INFORMATION.
 - 4 WIRE IN SIDEWALL.
 - 3 WIRE IN ROOF.
 - 2 WIRE IS PART OF WIRE ASM-CHASSIS.
 - 1 ALL OUTLETS DOWN STREAM AND INCLUDING THIS OUTLET ARE GROUND FAULT INTERRUPT PROTECTED.

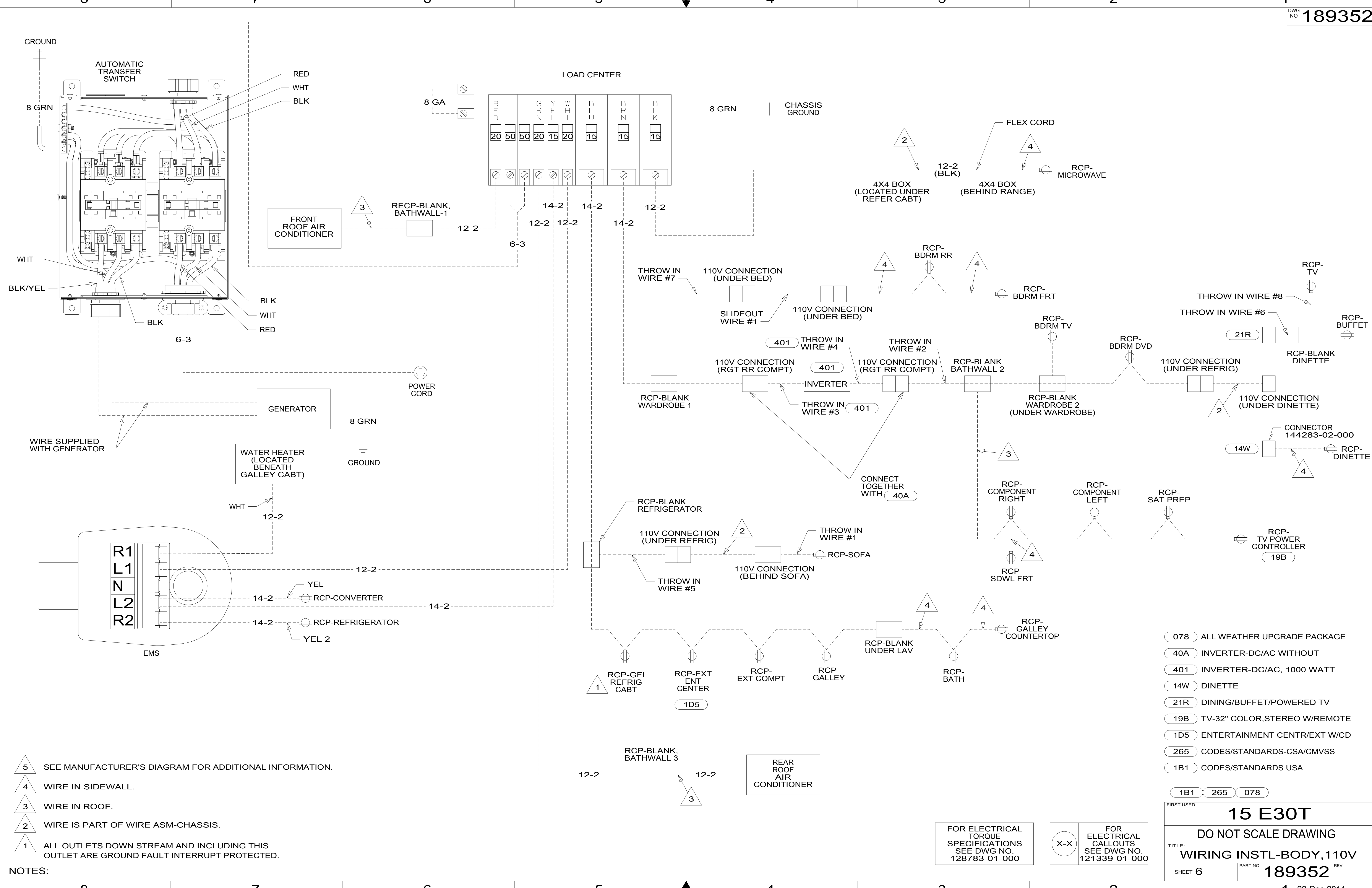
- 12D ELECTRICAL SYSTEM 30 AMP
- 40A INVERTER-DC/AC WITHOUT
- 401 INVERTER-DC/AC, 1000 WATT
- 14W DINETTE
- 21R DINING/BUFFET/POWERED TV
- 19B TV-32" COLOR,STEREO W/REMOTE
- 1D5 ENTERTAINMENT CENTR/EXT W/CD
- 265 CODES/STANDARDS-CSA/CMVSS
- 1B1 CODES/STANDARDS USA

FOR ELECTRICAL TORQUE SPECIFICATIONS SEE DWG NO. 128783-01-000

FOR ELECTRICAL CALLOUTS SEE DWG NO. 121339-01-000

15 E30T
DO NOT SCALE DRAWING
TITLE: WIRING INSTL-BODY, 110V
SHEET 5 PART NO 189352 REV
1 22-Dec-2014

189352



- NOTES:
- 5 SEE MANUFACTURER'S DIAGRAM FOR ADDITIONAL INFORMATION.
 - 4 WIRE IN SIDEWALL.
 - 3 WIRE IN ROOF.
 - 2 WIRE IS PART OF WIRE ASM-CHASSIS.
 - 1 ALL OUTLETS DOWN STREAM AND INCLUDING THIS OUTLET ARE GROUND FAULT INTERRUPT PROTECTED.

FOR ELECTRICAL TORQUE SPECIFICATIONS SEE DWG NO. 128783-01-000

X-X FOR ELECTRICAL CALLOUTS SEE DWG NO. 121339-01-000

- 078 ALL WEATHER UPGRADE PACKAGE
- 40A INVERTER-DC/AC WITHOUT
- 401 INVERTER-DC/AC, 1000 WATT
- 14W DINETTE
- 21R DINING/BUFFET/POWERED TV
- 19B TV-32" COLOR,STEREO W/REMOTE
- 1D5 ENTERTAINMENT CENTR/EXT W/CD
- 265 CODES/STANDARDS-CSA/CMVSS
- 1B1 CODES/STANDARDS USA

FIRST USED	
15 E30T	
DO NOT SCALE DRAWING	
TITLE: WIRING INSTL-BODY, 110V	
SHEET 6	PART NO 189352 REV
1 22-Dec-2014	

189352