



**DANGER**

**Danger of electrical shock, burns or death.** Always remove all power sources before attempting any repair, service or diagnostic work. Power can be present from shore power, generator, inverter or battery. All power sources must be disabled and secured before performing any service.

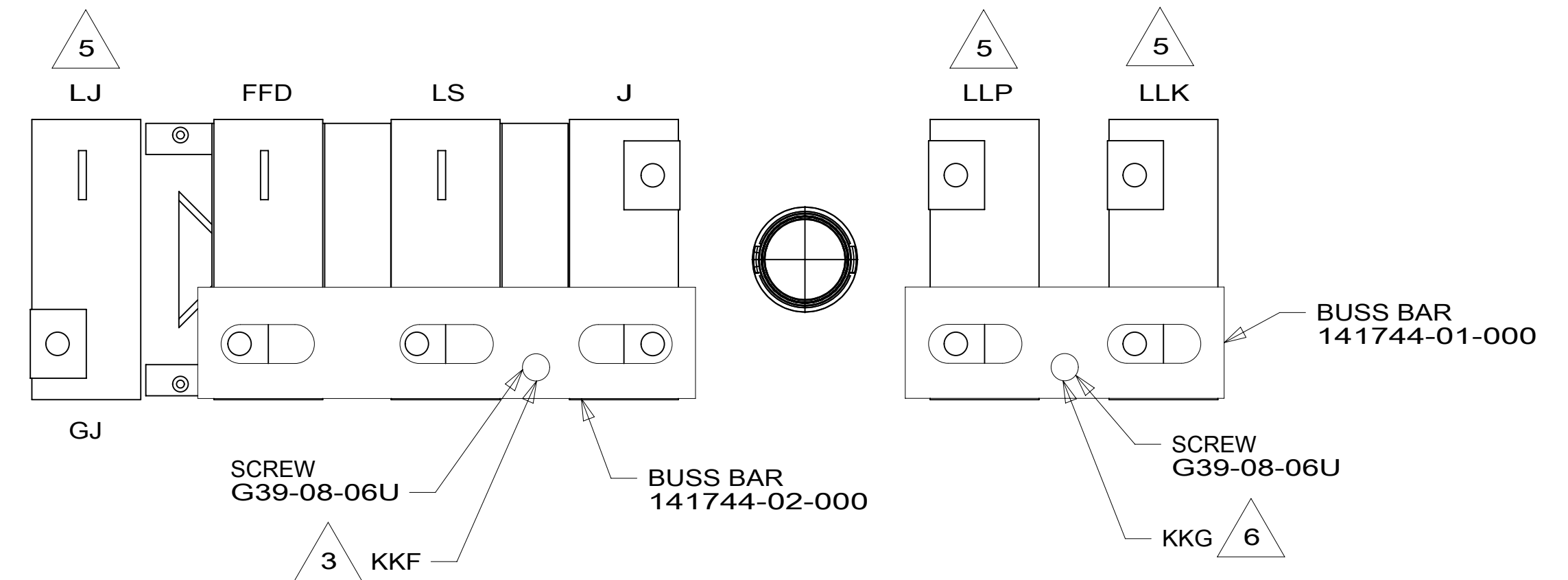
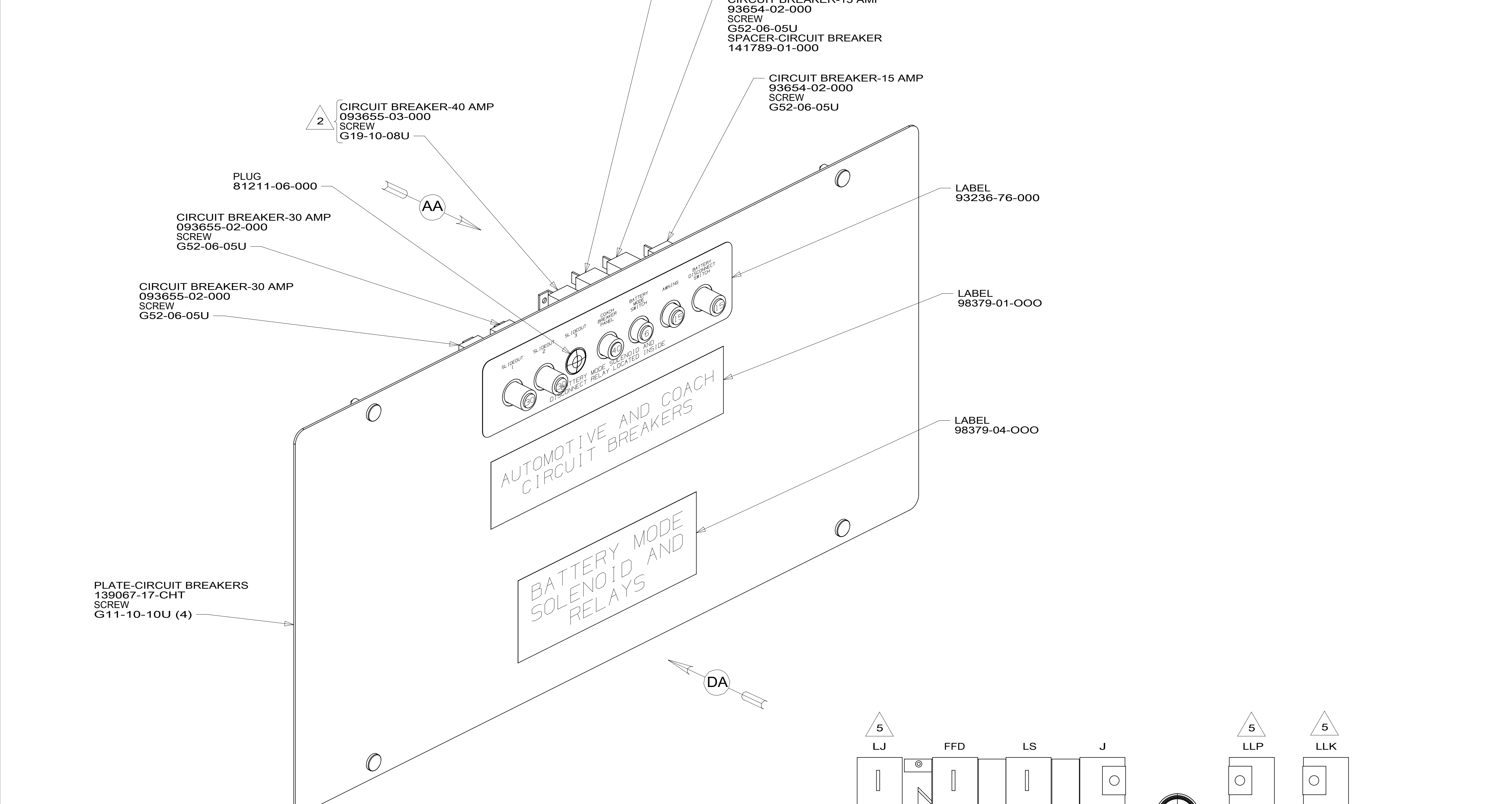


**CAUTION**

If you lack the skills, tools or equipment to perform diagnostic or repair work leave such work to an authorized Winnebago Industries dealer or other qualified shop.

DRAWING NO.	MODEL	SHEETS
189346-01	727K	1,4
189346-02	727D	2,4
189346-03	730J	3,4

RELEASE	REV/DATE	DWG NO	189346
REV ZONE	REVISION RECORD	DATE	DFT-ORIG



- 6 WIRE IS MARKED WITH PURPLE TAPE.  
 5 CIRCUIT IS FROM WIRE ASM-CHASSIS.  
 4 TAPE BACK UNUSED WIRES TO HARNESS.  
 3 WIRE IS MARKED WITH YELLOW TAPE.  
 2 REPLACE EXISTING SCREW TO PROPERLY ATTACH BREAKER TO BUSS BAR.
1. SECURE CONDUIT 41953, TAB AS REQUIRED, OVER ALL WIRES IN CONTACT WITH SHARP EDGES.
- NOTES:

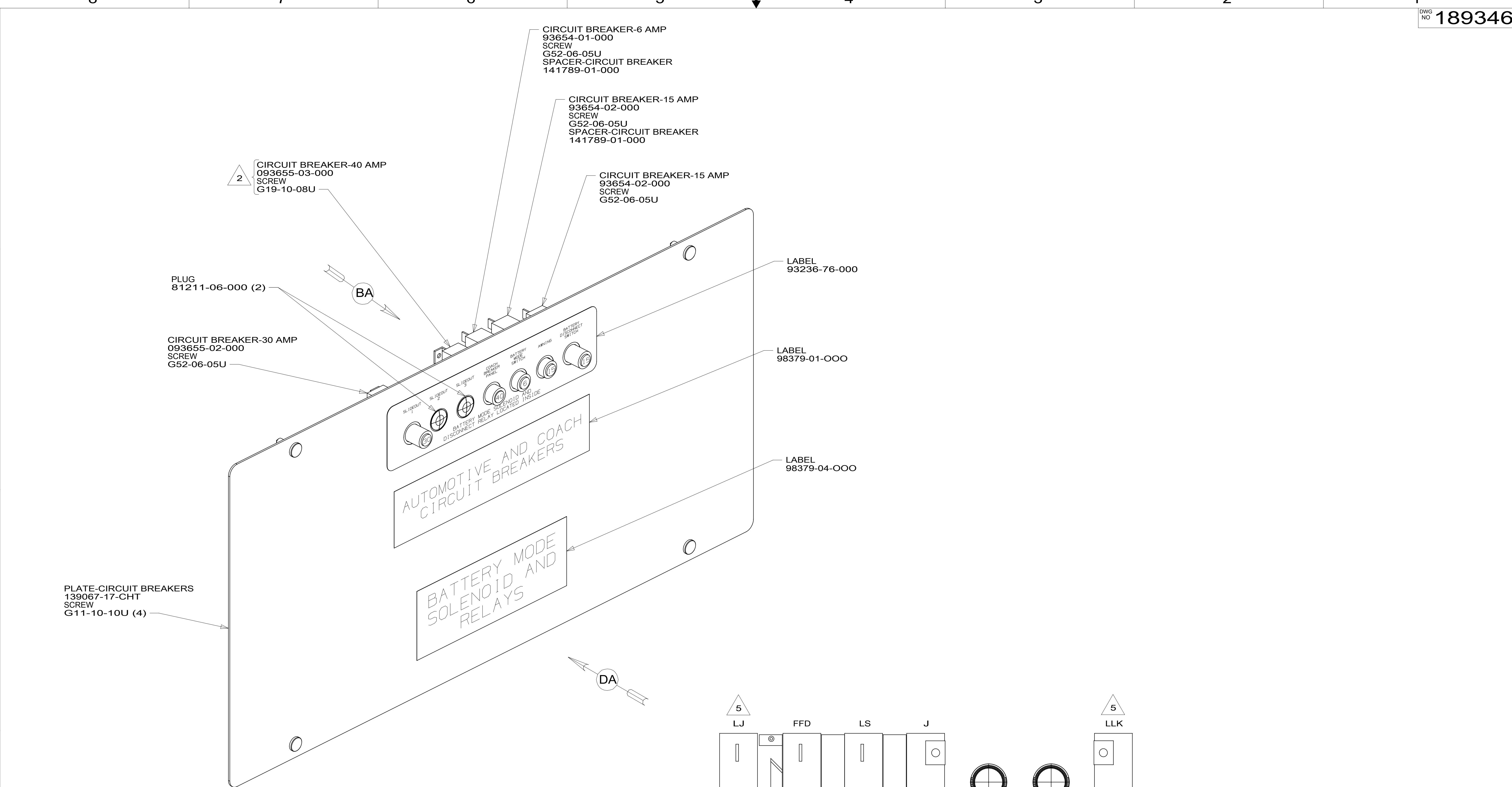
FOR ELECTRICAL TORQUE SPECIFICATIONS SEE DWG NO. 128783-01-000

FOR ELECTRICAL CALLOUTS SEE DWG NO. 121339-01-000

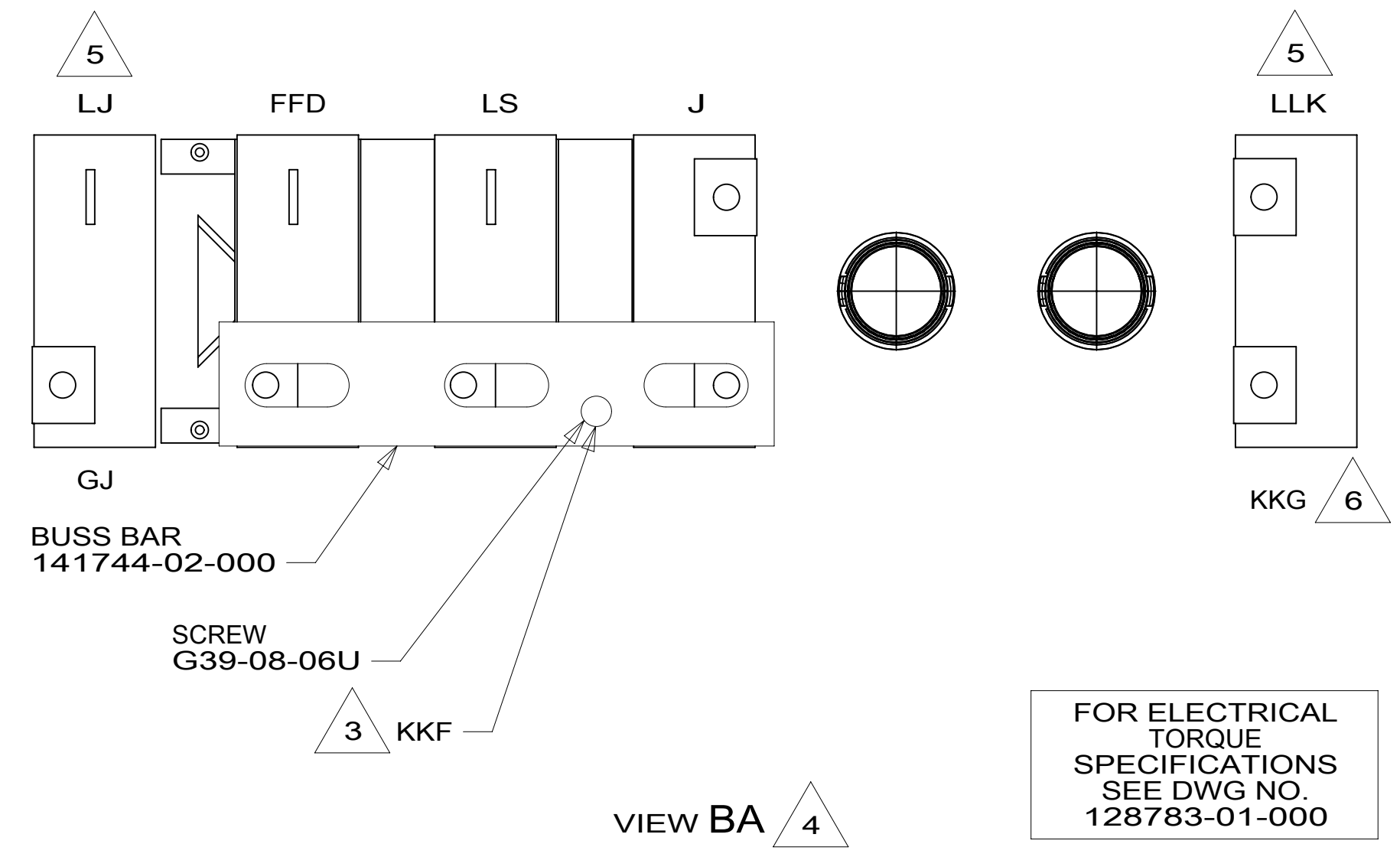
- 265 CODES/STANDARDS-CSA/CMVSS  
 1B1 CODES/STANDARDS USA  
 1B1 265

		COPYRIGHT 2014 WINNEBAGO INDUSTRIES, INC.
DFTR	ORIG. DATE	
CHKR	ALL DIMENSIONS ARE IN MILLIMETERS	
P.E.	FIRST USED	
M.E.	15 700-SERIES	
DSNR	UNSPECIFIED TOLERANCES ARE:	
	WHOLE DIM (X) : 3	MATERIAL: X
	ONE-PLACE (X.X) : 1.5	X
	TWO-PLACE (X.XX) : 0.50	X
	ANGLE : 1°	X
	THIRD ANGLE PROJECTION	X
DO NOT SCALE DRAWING		REFER TO ES0018 FOR FASTENER TIGHTENING GUIDELINES
TITLE: CHASSIS ELECTRICAL BOX ASM		
SHEET 1 OF 4	PART NO 189346	REV
REF: 1		06-Feb-2015

\*189346\*



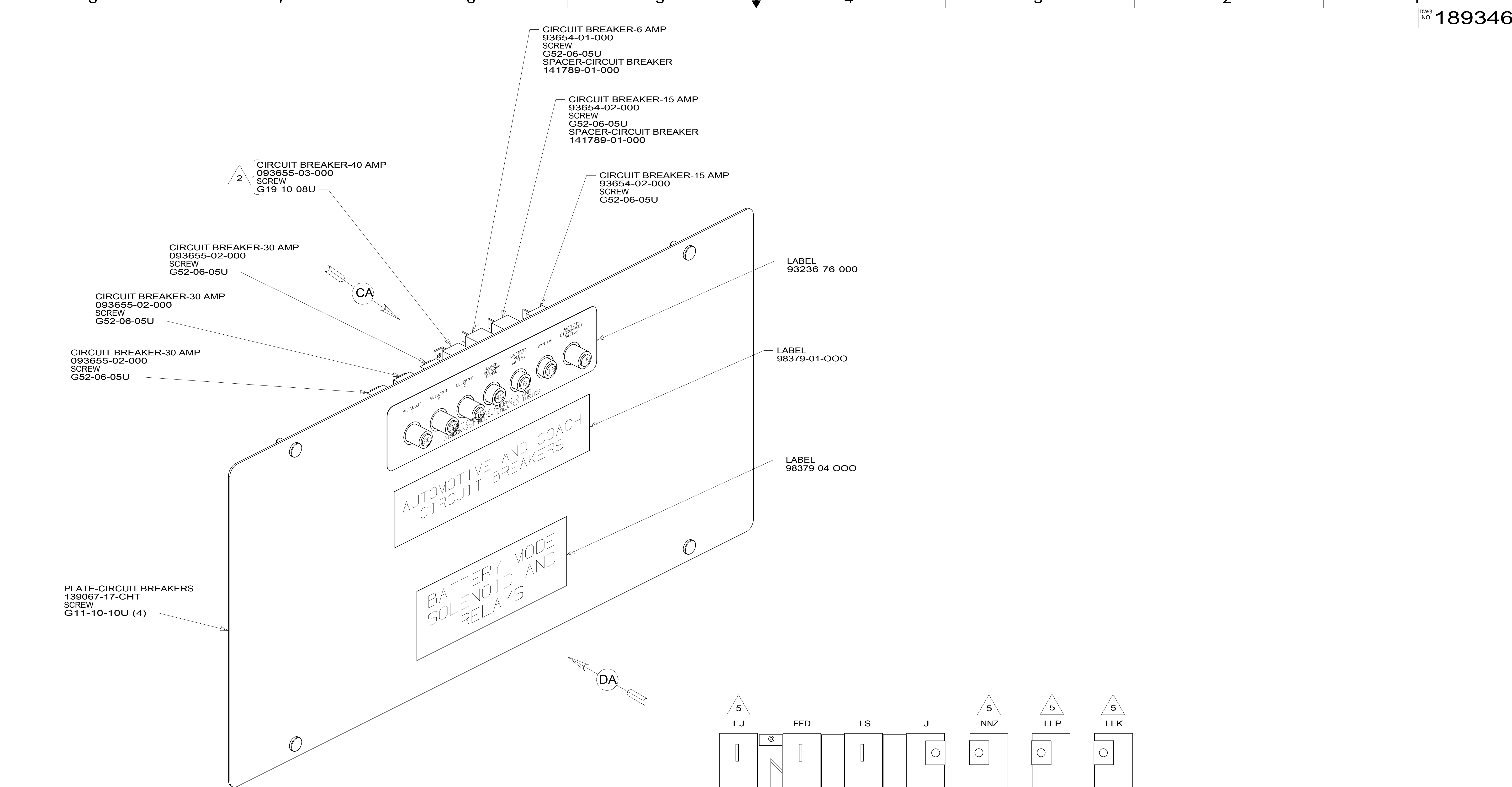
- 6 WIRE IS MARKED WITH PURPLE TAPE.  
 5 CIRCUIT IS FROM WIRE ASM-CHASSIS.  
 4 TAPE BACK UNUSED WIRES TO HARNESS.  
 3 WIRE IS MARKED WITH YELLOW TAPE.  
 2 REPLACE EXISTING SCREW TO PROPERLY ATTACH BREAKER TO BUSS BAR.
1. SECURE CONDUIT 41953, TAB AS REQUIRED, OVER ALL WIRES IN CONTACT WITH SHARP EDGES.



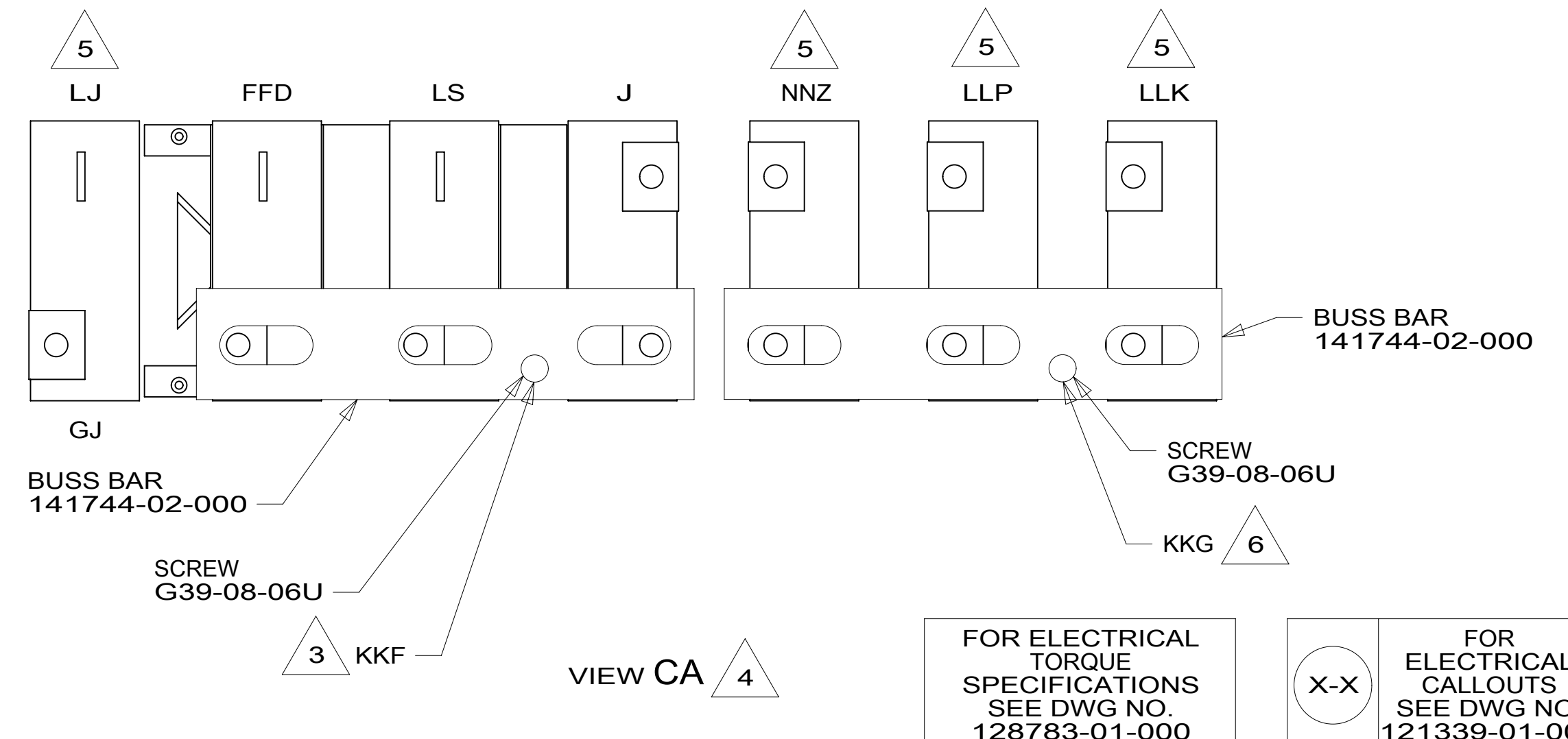
FOR ELECTRICAL TORQUE SPECIFICATIONS SEE DWG NO. 128783-01-000

FOR ELECTRICAL CALLOUTS SEE DWG NO. 121339-01-000

265	CODES/STANDARDS-CSA/CMVSS
1B1	CODES/STANDARDS USA
1B1	265
FIRST USED	
<b>15 700-SERIES</b>	
DO NOT SCALE DRAWING	
TITLE: CHASSIS ELECTRICAL BOX ASM	
SHEET 2	PART NO 189346 REV



- 6 WIRE IS MARKED WITH PURPLE TAPE.
  - 5 CIRCUIT IS FROM WIRE ASM-CHASSIS.
  - 4 TAPE BACK UNUSED WIRES TO HARNESS.
  - 3 WIRE IS MARKED WITH YELLOW TAPE.
  - 2 REPLACE EXISTING SCREW TO PROPERLY ATTACH BREAKER TO BUSS BAR.
1. SECURE CONDUIT 41953, TAB AS REQUIRED, OVER ALL WIRES IN CONTACT WITH SHARP EDGES.

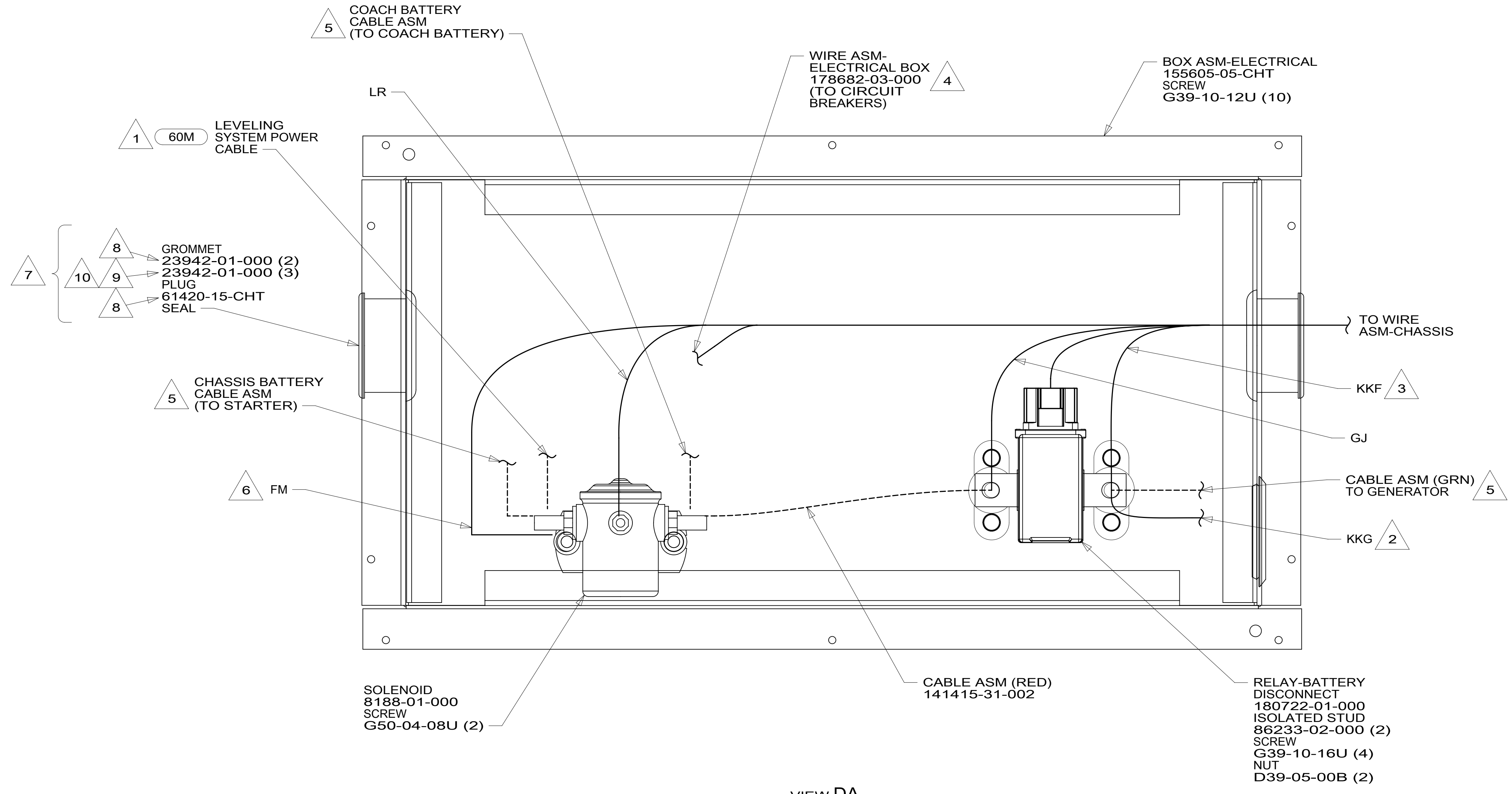


FOR ELECTRICAL TORQUE SPECIFICATIONS SEE DWG NO. 128783-01-000

FOR ELECTRICAL CALLOUTS SEE DWG NO. 121339-01-000

265	CODES/STANDARDS-CSA/CMVSS
1B1	CODES/STANDARDS USA
1B1	265
<b>FIRST USED</b>	
<b>15 700-SERIES</b>	
<b>DO NOT SCALE DRAWING</b>	
<b>TITLE: CHASSIS ELECTRICAL BOX ASM</b>	
SHEET 3	PART NO 189346 REV
1 06-Feb-2015	

\*189346\*



- 10 USED ON 727D.
- 9 USED ON 727K.
- 8 USED ON 730J.
- 7 LOCATION OF GROMMET & PLUG DEPENDENT ON LOCATION OF BOX.
- 6 SECURE WITH SOLENOID MOUNTING SCREW.
- 5 SEE WIRING INSTL-CHASSIS FOR ADDITIONAL INFORMATION.
- 4 TAPE BACK UNUSED WIRES TO HARNESS.
- 3 WIRE IS MARKED WITH YELLOW TAPE.
- 2 WIRE IS MARKED WITH PURPLE TAPE.
- 1 SEE LEVELING SYSTEM INSTL FOR ADDITIONAL INFORMATION.

- 60M HYDRAULIC LEVEL JACKS-AUTO
- 265 CODES/STANDARDS-CSA/CMVSS
- 1B1 CODES/STANDARDS USA

1B1 265

FIRST USED

**15 700-SERIES**

DO NOT SCALE DRAWING

TITLE: CHASSIS ELECTRICAL BOX ASM

SHEET 4 PART NO 189346 REV

1 06-Feb-2015

FOR ELECTRICAL TORQUE SPECIFICATIONS SEE DWG NO. 128783-01-000

FOR ELECTRICAL CALLOUTS SEE DWG NO. 121339-01-000

\*189346\*