



DANGER

Danger of electrical shock, burns or death. Always remove all power sources before attempting any repair, service or diagnostic work. Power can be present from shore power, generator, inverter or battery. All power sources must be disabled and secured before performing any service.



CAUTION

If you lack the skills, tools or equipment to perform diagnostic or repair work leave such work to an authorized Winnebago Industries dealer or other qualified shop.

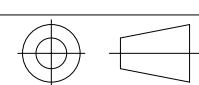
DRAWING NO.	MODEL	SHEET
189345-01	727K	1,2
189345-02	727D	1,2
189345-03	730J	1,2

RELEASE	REV/DATE	DWG NO	189345
REV ZONE	REVISION RECORD	DATE	DFT-ORIG

		727K	727D	730J
CABLE ASM-STARTER (RED)		141415-34-054	141415-34-054	141415-34-050
CABLE ASM-COACH BATTERY (YEL)		141415-52-020	141415-52-020	141415-52-014
CABLE ASM-COACH BATTERY GND (BLK)		133566-12-015	133566-12-015	133566-12-015
CABLE ASM-GENERATOR (GRN)		141415-42-030	141415-42-030	141415-42-030
CABLE ASM-GENERATOR GND (BLK)		133566-12-008	133566-12-008	133566-12-008
LEVELING SYSTEM POWER CABLE (BLU)	60M	141415-22-017	141415-22-017	141415-22-020
CABLE ASM INVERTER FUSE (ORG)	401	141415-64-011	141415-64-011	141415-64-011
CABLE ASM INVERTER (ORG)	401	141415-64-015	141415-64-015	141415-64-011
CABLE ASM INVERTER GND (BLK)	401	133566-12-011	133566-12-011	133566-12-011
INVERTER GND	401	139776-02-011	139776-02-011	139776-02-011
LEVELING SYSTEM GROUND CABLE (BLK)	60M	133566-12-007	133566-12-007	133566-12-007

- 401 INVERTER-DC/AC, 1000 WATT
- 60M HYDRAULIC LEVEL JACKS-AUTO
- 265 CODES/STANDARDS-CSA/CMVSS
- 1B1 CODES/STANDARDS USA

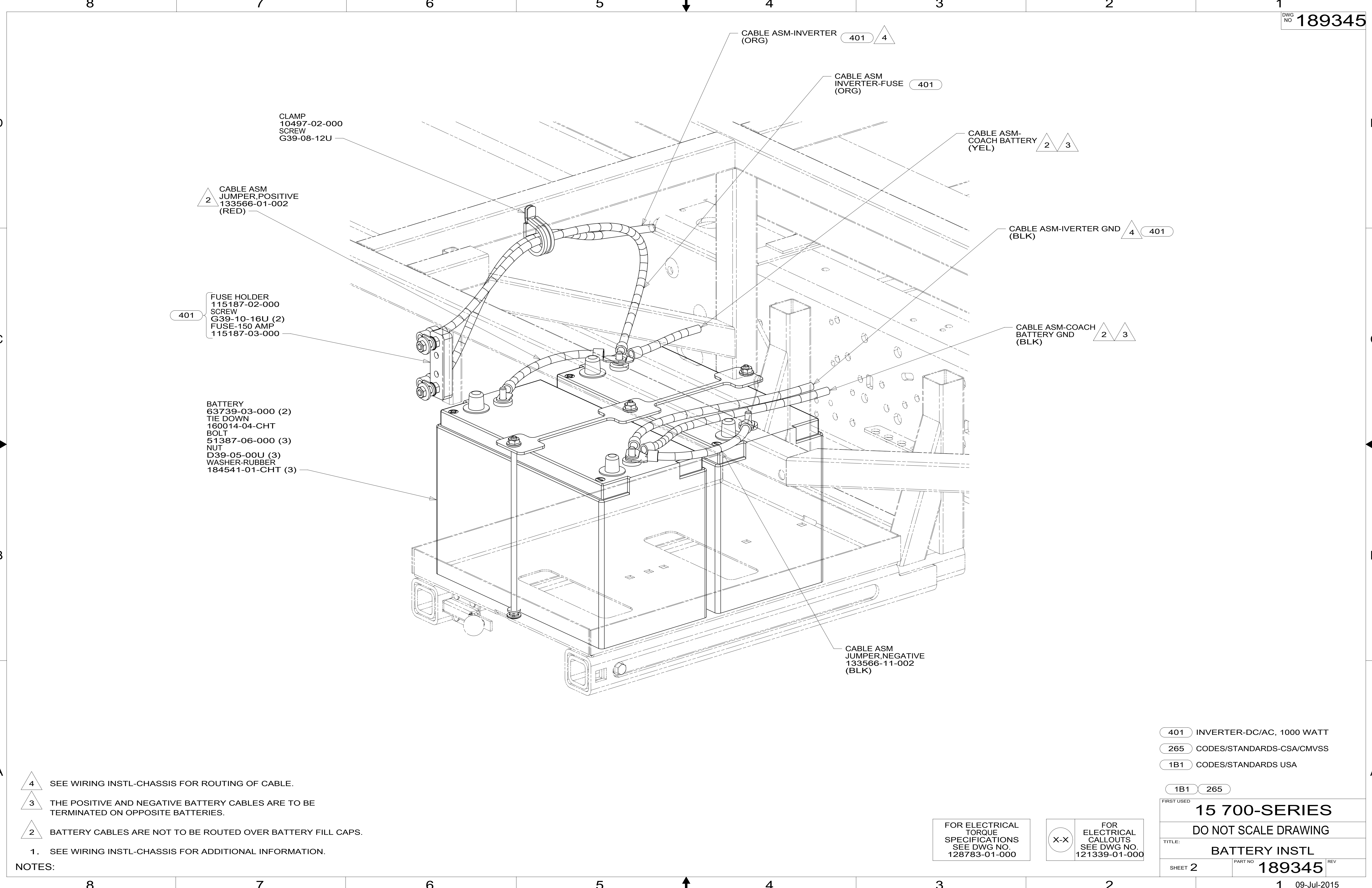

 COPYRIGHT 2014
 WINNEBAGO
 INDUSTRIES, INC.

DFT-ORIG	ORIG. DATE
CHKR	ALL DIMENSIONS ARE IN MILLIMETERS
P.E.	
M.E.	FIRST USED
DSNR	15 700-SERIES
UNSPECIFIED TOLERANCES ARE:	
WHOLE DIM (X)	: 3
ONE-PLACE (X.X)	: 1.5
TWO-PLACE (X.XX)	: 0.50
ANGLE	: 1°
THIRD ANGLE PROJECTION	
DO NOT SCALE DRAWING	REFER TO ES0018 FOR FASTENER TIGHTENING GUIDELINES
TITLE: BATTERY INSTL	
SHEET 1 OF 2	PART NO 189345 REV

FOR ELECTRICAL
TORQUE
SPECIFICATIONS
SEE DWG NO.
128783-01-000

FOR
ELECTRICAL
CALLOUTS
SEE DWG NO.
121339-01-000

*189345 *A



- 4 SEE WIRING INSTL-CHASSIS FOR ROUTING OF CABLE.
- 3 THE POSITIVE AND NEGATIVE BATTERY CABLES ARE TO BE TERMINATED ON OPPOSITE BATTERIES.
- 2 BATTERY CABLES ARE NOT TO BE ROUTED OVER BATTERY FILL CAPS.
1. SEE WIRING INSTL-CHASSIS FOR ADDITIONAL INFORMATION.

NOTES:

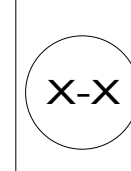
- 401 INVERTER-DC/AC, 1000 WATT
- 265 CODES/STANDARDS-CSA/CMVSS
- 1B1 CODES/STANDARDS USA

1B1 265

FIRST USED	
15 700-SERIES	
DO NOT SCALE DRAWING	
TITLE: BATTERY INSTL	
SHEET 2	PART NO 189345 REV
1 09-Jul-2015	

FOR ELECTRICAL TORQUE SPECIFICATIONS SEE DWG NO. 128783-01-000

FOR ELECTRICAL CALLOUTS SEE DWG NO. 121339-01-000



*189345 *A