



**DANGER**

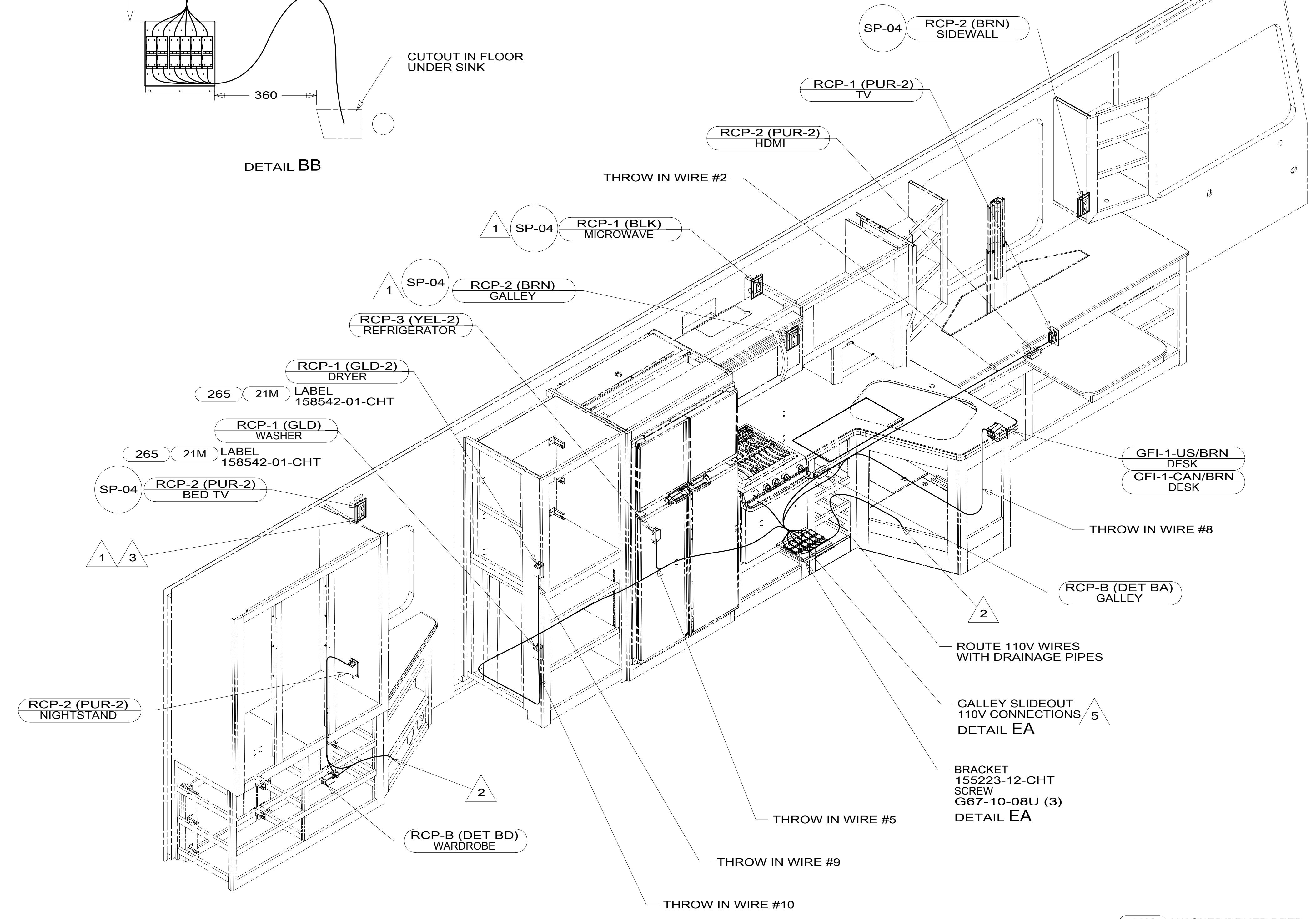
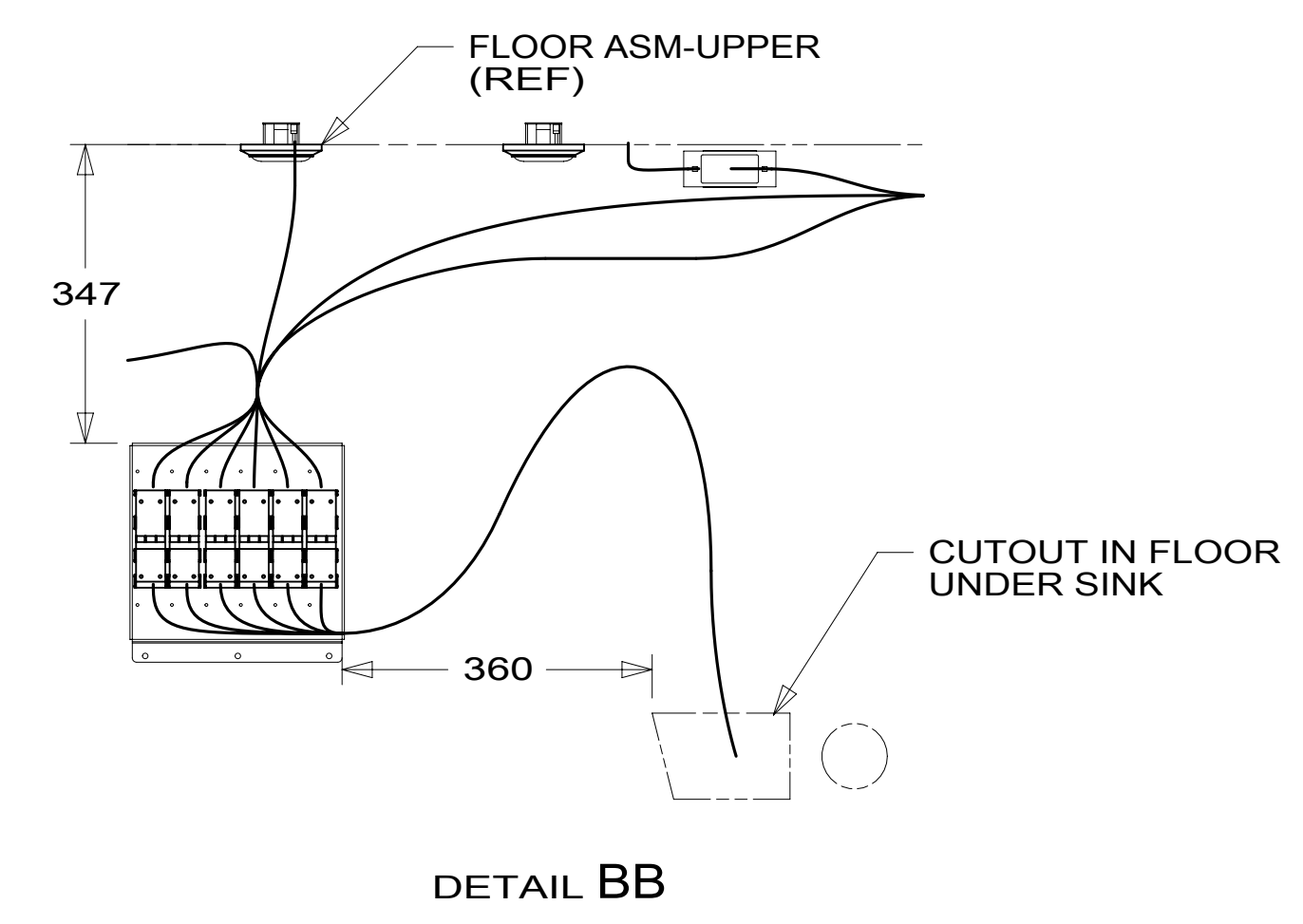
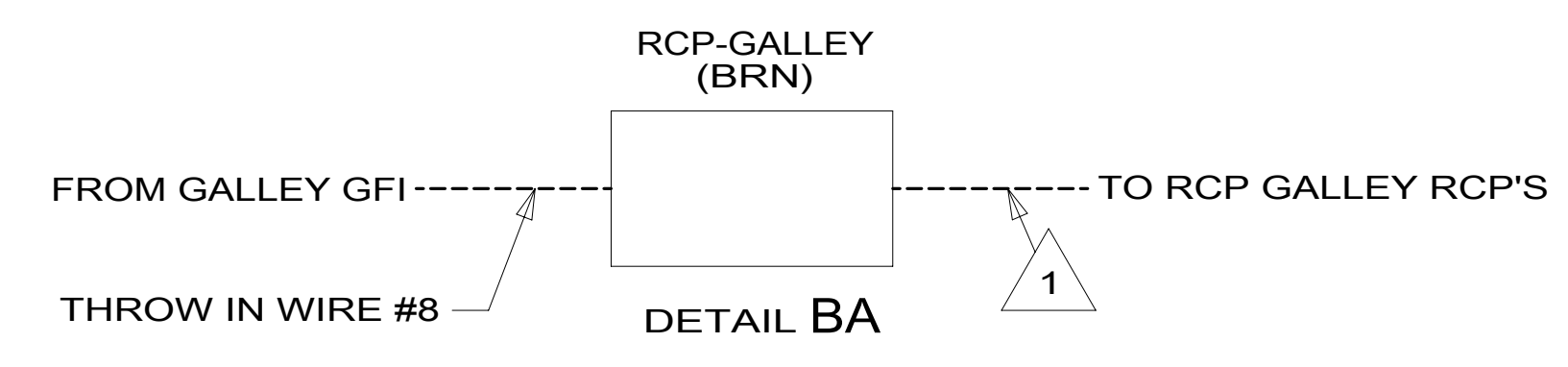
**Danger of electrical shock, burns or death.** Always remove all power sources before attempting any repair, service or diagnostic work. Power can be present from shore power, generator, inverter or battery. All power sources must be disabled and secured before performing any service.



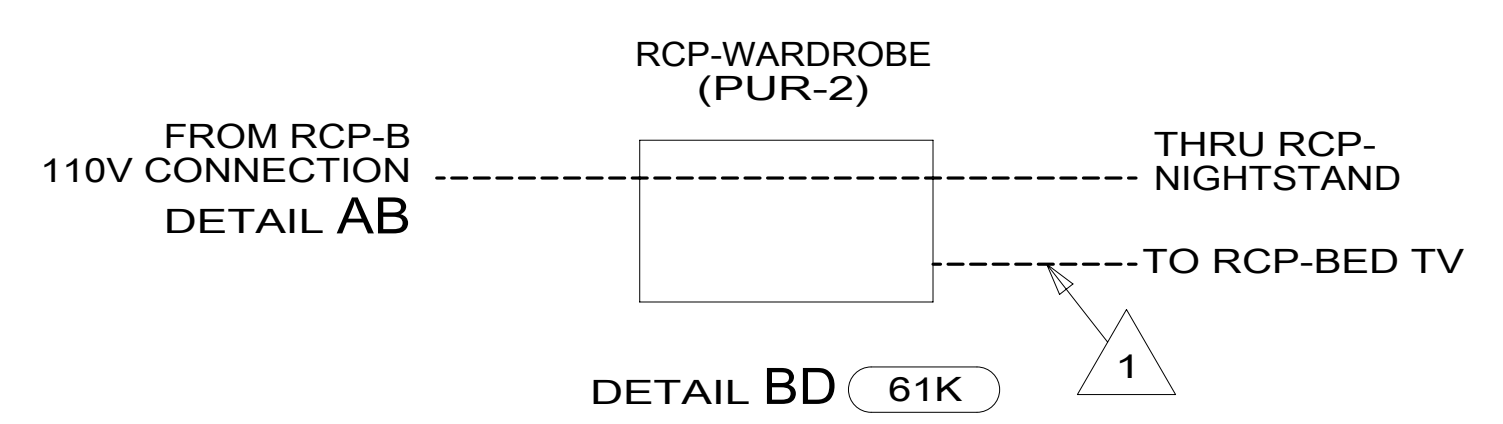
**CAUTION**

If you lack the skills, tools or equipment to perform diagnostic or repair work leave such work to an authorized Winnebago Industries dealer or other qualified shop.





- 5 LOCATING DIMENSION SEE DETAIL BB.
4. ALL WIRES TO BE SECURED WITH CLAMP 10495 OR 10497 OR WIRE TIE 8343 OR 108046 EVERY 600MM, USE SCREW G67-XX-XXX OR G56-XX-XXX AS APPROPRIATE FOR INSTALLATION.
- 3 SEE WIRING INSTALLATION TV/DVD FOR ADDITIONAL INFORMATION.
- 2 WIRE ROUTES THRU FLOOR IN THIS AREA.
- 1 WIRE ROUTED IN SIDEWALL



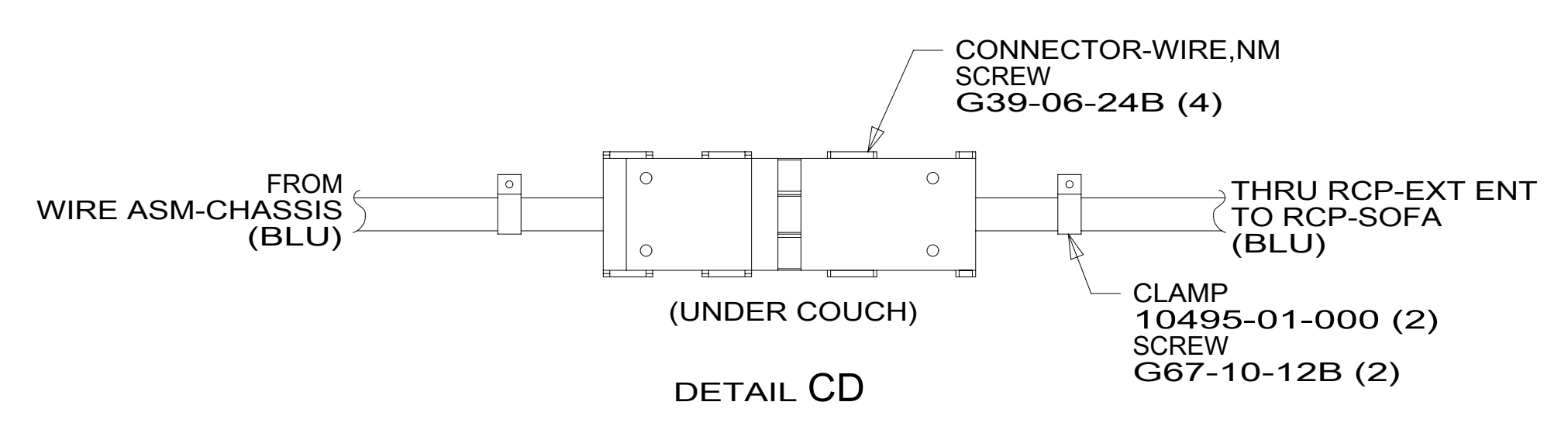
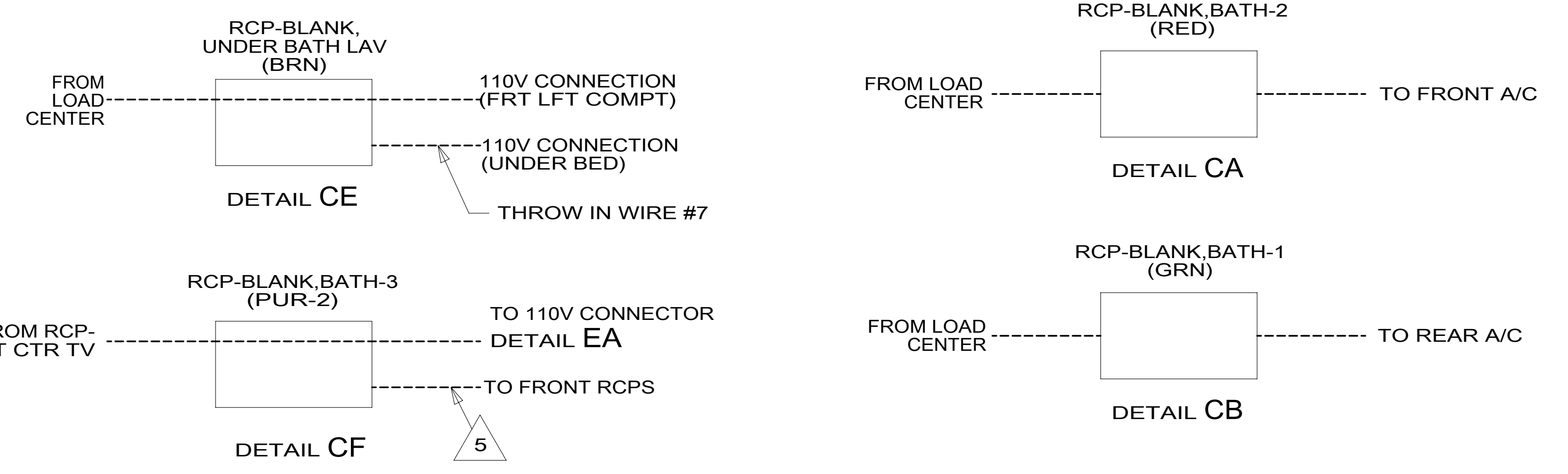
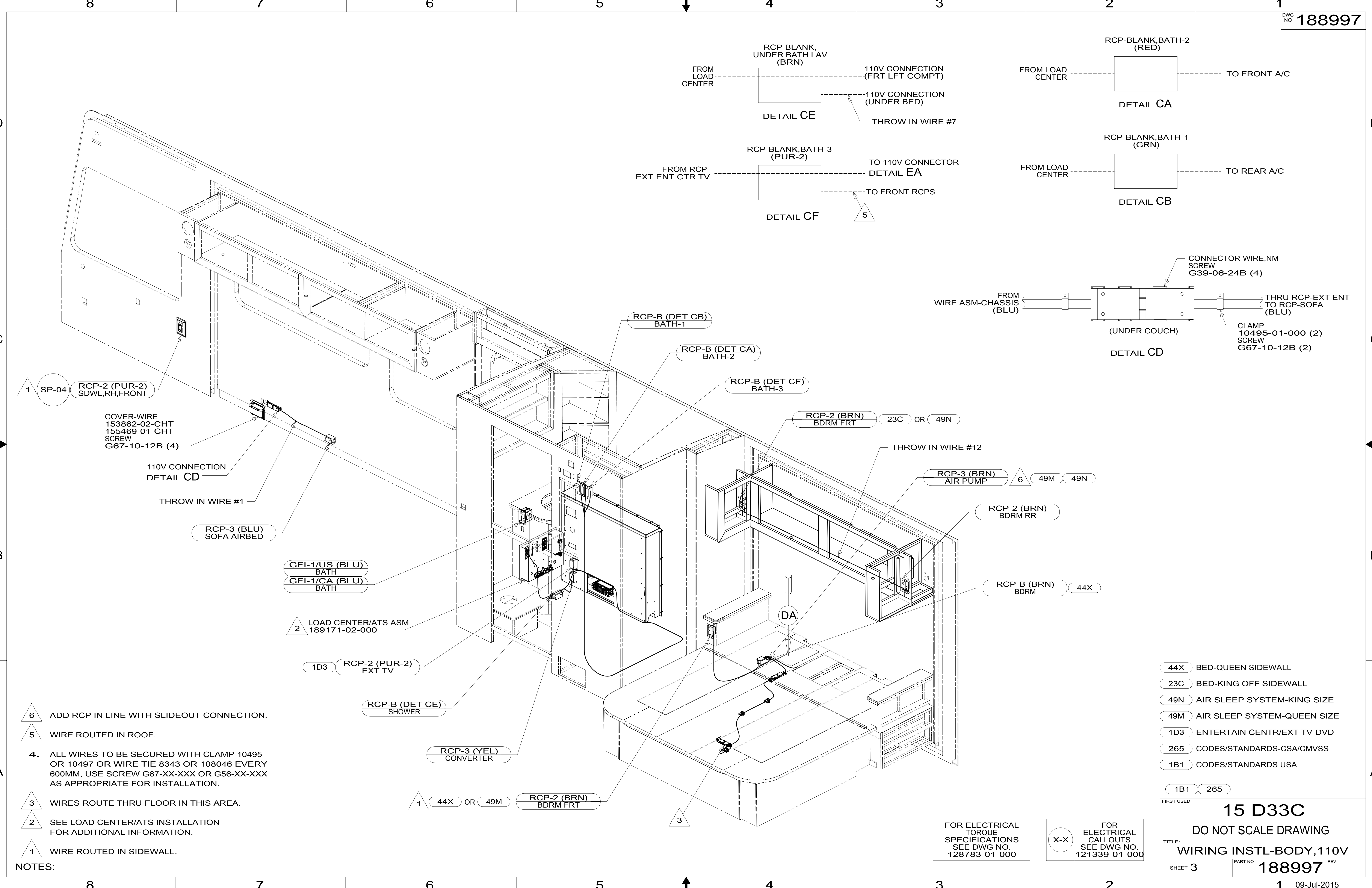
FOR ELECTRICAL TORQUE SPECIFICATIONS SEE DWG NO. 128783-01-000

FOR ELECTRICAL CALLOUTS SEE DWG NO. 121339-01-000

- 21M WASHER/DRYER PREP
- 265 CODES/STANDARDS-CSA/CMVSS
- 1B1 CODES/STANDARDS USA

FIRST USED		<b>15 D33C</b>	
<b>DO NOT SCALE DRAWING</b>			
<b>TITLE: WIRING INSTL-BODY, 110V</b>			
SHEET 2	PART NO	<b>188997</b>	REV
			09-Jul-2015

\*188997\*



1 SP-04 RCP-2 (PUR-2) SDWL,RH,FRONT

COVER-WIRE 153862-02-CHT 155469-01-CHT SCREW G67-10-12B (4)

110V CONNECTION DETAIL CD

THROW IN WIRE #1

RCP-3 (BLU) SOFA AIRBED

GFI-1/US (BLU) BATH  
GFI-1/CA (BLU) BATH

2 LOAD CENTER/ATS ASM 189171-02-000

1D3 RCP-2 (PUR-2) EXT TV

RCP-B (DET CE) SHOWER

RCP-3 (YEL) CONVERTER

1 44X OR 49M RCP-2 (BRN) BDRM FRT

RCP-B (DET CB) BATH-1

RCP-B (DET CA) BATH-2

RCP-B (DET CF) BATH-3

RCP-2 (BRN) BDRM FRT 23C OR 49N

THROW IN WIRE #12

RCP-3 (BRN) AIR PUMP 49M 49N

RCP-2 (BRN) BDRM RR

RCP-B (BRN) BDRM 44X

6 ADD RCP IN LINE WITH SLIDEOUT CONNECTION.

5 WIRE ROUTED IN ROOF.

4. ALL WIRES TO BE SECURED WITH CLAMP 10495 OR 10497 OR WIRE TIE 8343 OR 108046 EVERY 600MM, USE SCREW G67-XX-XXX OR G56-XX-XXX AS APPROPRIATE FOR INSTALLATION.

3 WIRES ROUTE THRU FLOOR IN THIS AREA.

2 SEE LOAD CENTER/ATS INSTALLATION FOR ADDITIONAL INFORMATION.

1 WIRE ROUTED IN SIDEWALL.

NOTES:

FOR ELECTRICAL TORQUE SPECIFICATIONS SEE DWG NO. 128783-01-000

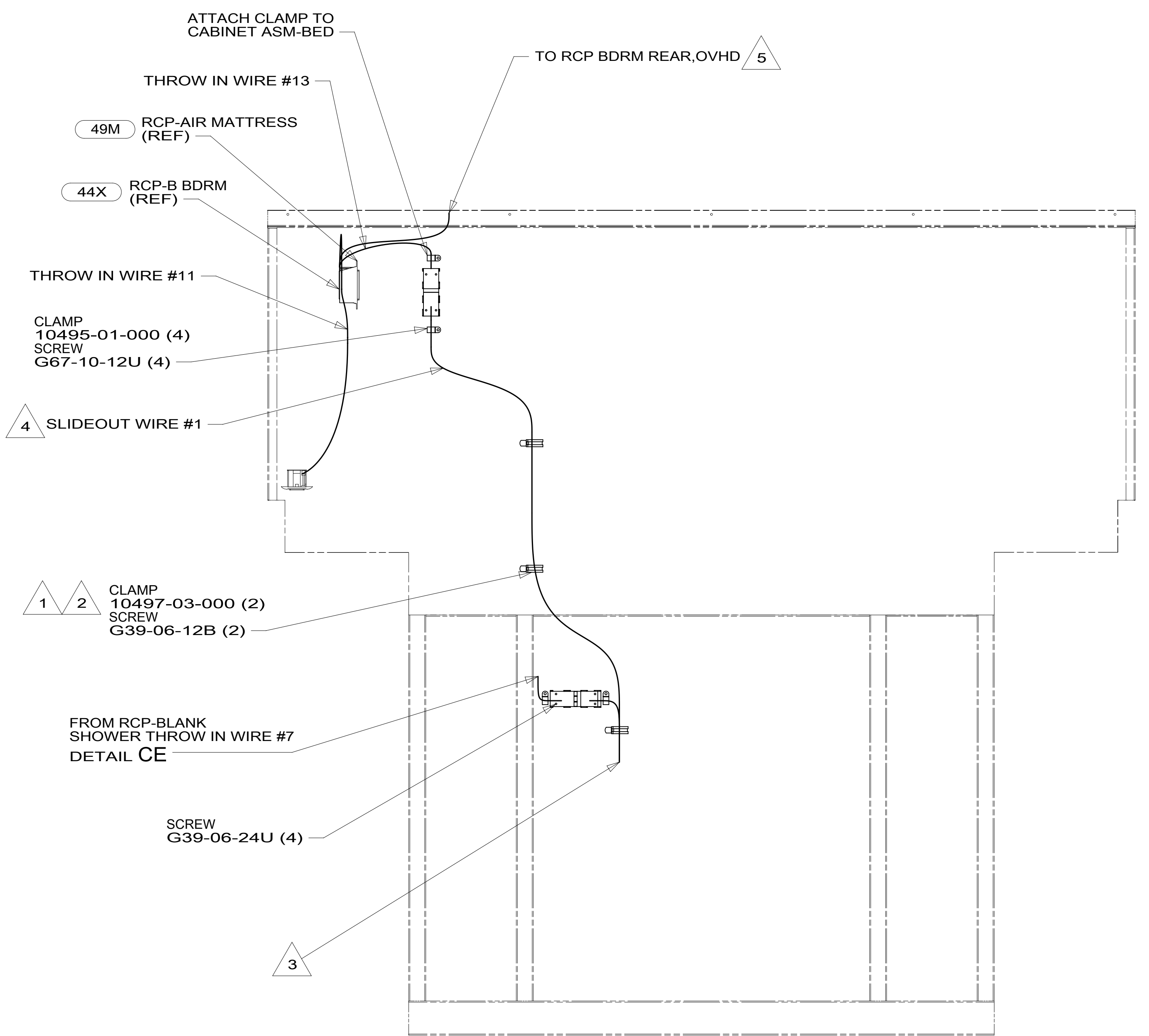
FOR ELECTRICAL CALLOUTS SEE DWG NO. 121339-01-000

- 44X BED-QUEEN SIDEWALL
- 23C BED-KING OFF SIDEWALL
- 49N AIR SLEEP SYSTEM-KING SIZE
- 49M AIR SLEEP SYSTEM-QUEEN SIZE
- 1D3 ENTERTAIN CENTR/EXT TV-DVD
- 265 CODES/STANDARDS-CSA/CMVSS
- 1B1 CODES/STANDARDS USA

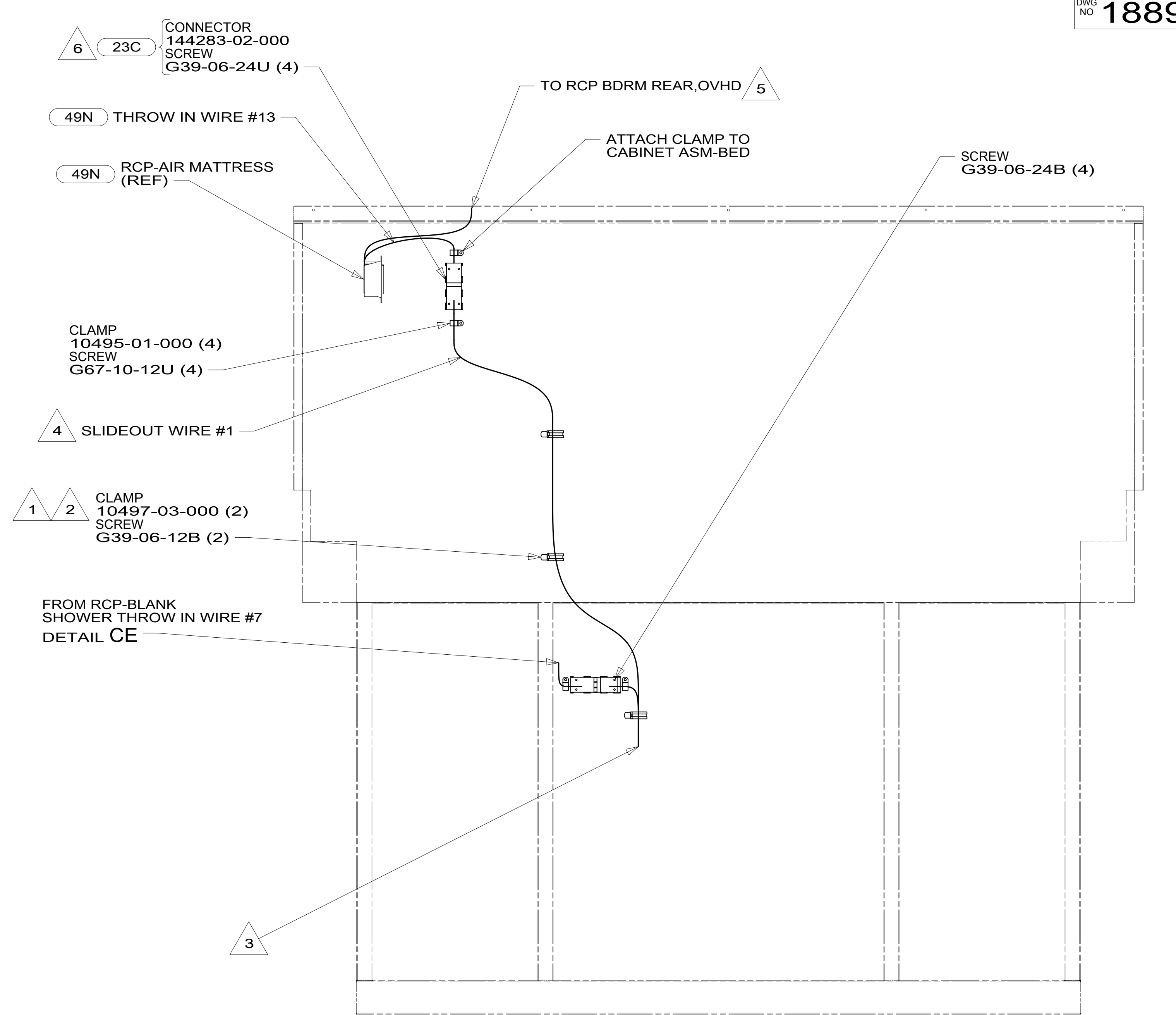
FIRST USED	
<b>15 D33C</b>	
DO NOT SCALE DRAWING	
TITLE: <b>WIRING INSTL-BODY, 110V</b>	
SHEET 3	PART NO <b>188997</b> REV
1 09-Jul-2015	

\*188997\*





VIEW DA (44X) OR (49M)



VIEW DA (23C) OR (49N)

- NOTES:
- 6 WITH (23C) ATTACH MOLEX CONNECTOR TO WIRE FROM SIDEWALL.
  - 5 WIRE ROUTED IN SIDEWALL.
  - 4 SEE LOAD CENTER/ATS ASM FOR ADDITIONAL INFORMATION.
  - 3 MAKE LOOP AS SMALL AS POSSIBLE WHEN SLIDEOUT IS COMPLETELY RETRACTED.
  - 2 RUN 12V WIRE ALONG WITH SLIDEOUT WIRE #3.
  - 1 WIRE MUST BE ROUTED THROUGH CLAMPS AS SHOWN.

- (44X) BED-QUEEN SIDEWALL
- (23C) BED-KING OFF SIDEWALL
- (49N) AIR SLEEP SYSTEM-KING SIZE
- (49M) AIR SLEEP SYSTEM-QUEEN SIZE
- (265) CODES/STANDARDS-CSA/CMVSS
- (1B1) CODES/STANDARDS USA

FOR ELECTRICAL TORQUE SPECIFICATIONS SEE DWG NO. 128783-01-000

FOR ELECTRICAL CALLOUTS SEE DWG NO. 121339-01-000

FIRST USED	
<b>15 D33C</b>	
DO NOT SCALE DRAWING	
TITLE: <b>WIRING INSTL-BODY, 110V</b>	
SHEET 4	PART NO <b>188997</b> REV
1 09-Jul-2015	

\*188997 A\*

8

7

6

5

4

3

2

1

D

D

C

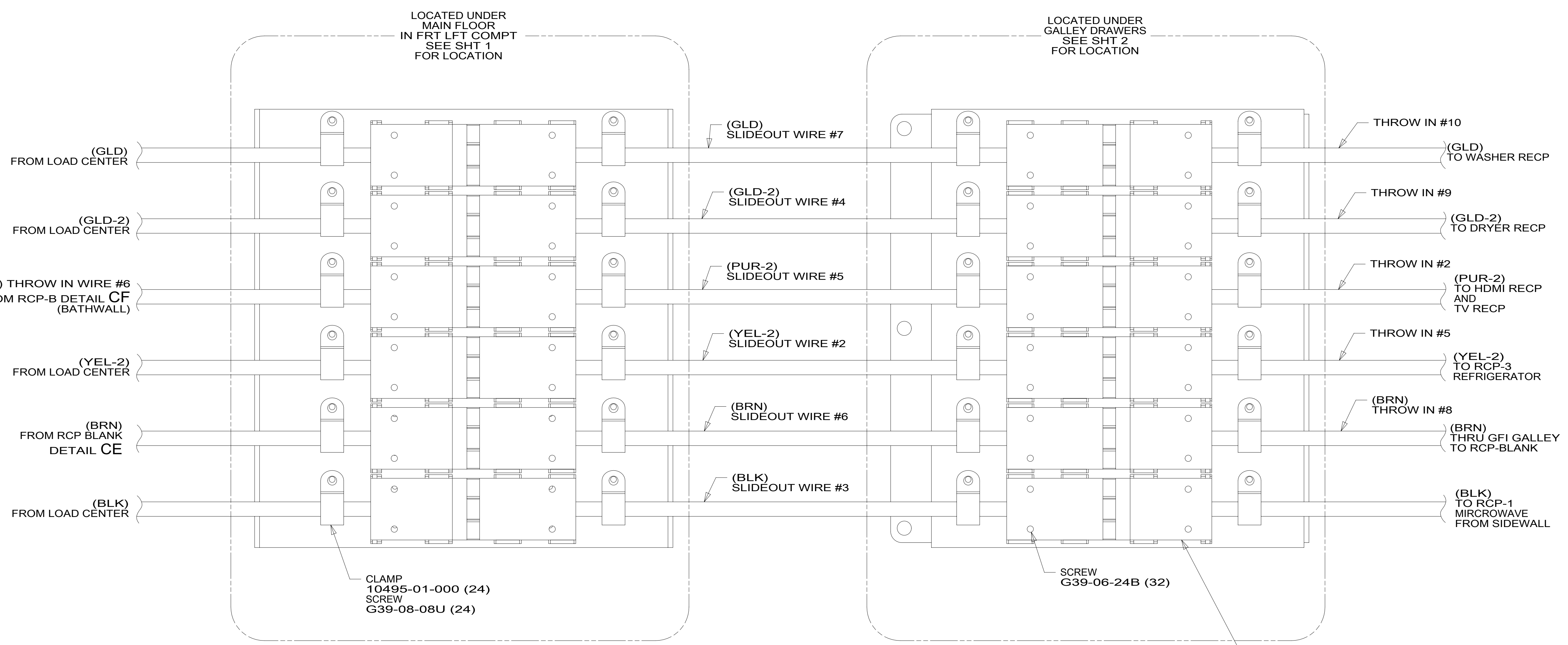
C

B

B

A

A



DETAIL EA

265 CODES/STANDARDS-CSA/CMVSS

1B1 CODES/STANDARDS USA

1B1 265

FIRST USED 15 D33C

DO NOT SCALE DRAWING

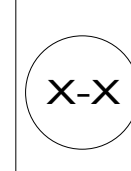
TITLE: WIRING INSTL-BODY, 110V

SHEET 5 PART NO 188997 REV

1 09-Jul-2015

FOR ELECTRICAL TORQUE SPECIFICATIONS SEE DWG NO. 128783-01-000

FOR ELECTRICAL CALLOUTS SEE DWG NO. 121339-01-000



\*188997\*

