



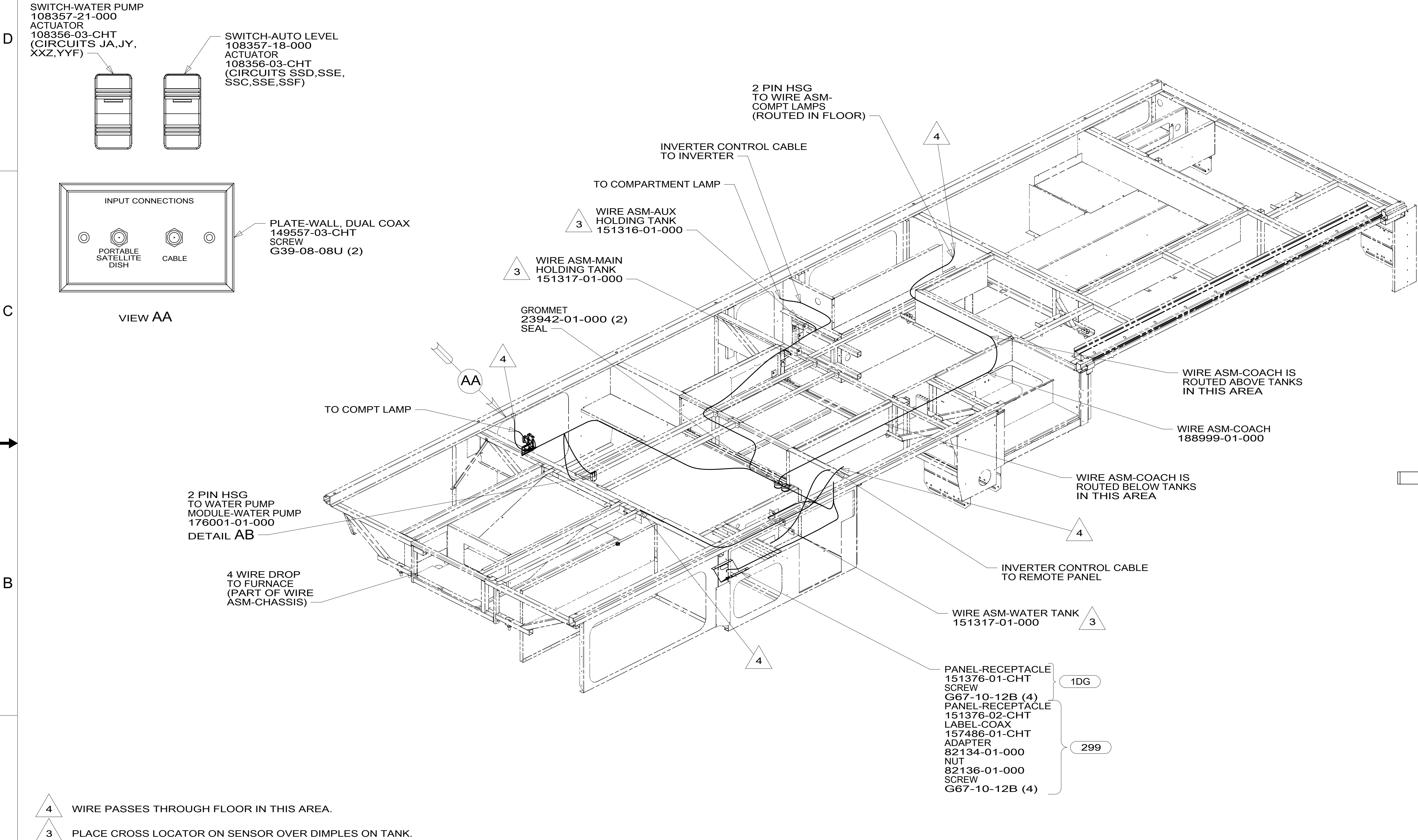
**DANGER**

**Danger of electrical shock, burns or death.** Always remove all power sources before attempting any repair, service or diagnostic work. Power can be present from shore power, generator, inverter or battery. All power sources must be disabled and secured before performing any service.

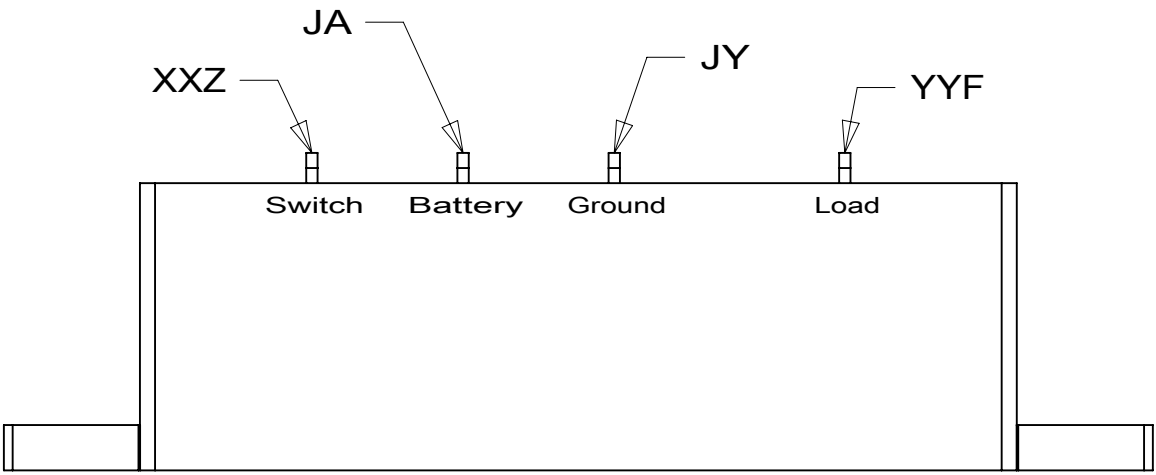


**CAUTION**

If you lack the skills, tools or equipment to perform diagnostic or repair work leave such work to an authorized Winnebago Industries dealer or other qualified shop.



2. ROUTE TANK SENSOR WIRES SO THEY DO NOT PASS OVER SENSORS. USE WIRE TIE MOUNT 155366-01-000 AND WIRE TIE 8343-01-000 AS NEEDED. TANK SURFACE MUST BE CLEANED USING ISOPROPYL ALCOHOL AND PRIMED WITH PRIMER 94.
1. AT MINIMUM ALL WIRES TO BE SUPPORTED AND SECURED PER CODE REQUIREMENTS. USE CLAMP 10495 OR 10497 OR WIRE TIE 8343 OR 108046 AND SCREW G67-XX-XXX OR G56-XX-XXX AS APPROPRIATE FOR INSTALLATION.



- 1DG EXT ENTERTAIN CTR W/TV & CD
- 299 ENTERTAINMENT CENTER EXT.W/O
- 265 CODES/STANDARDS-CSA/CMVSS
- 1B1 CODES/STANDARDS USA

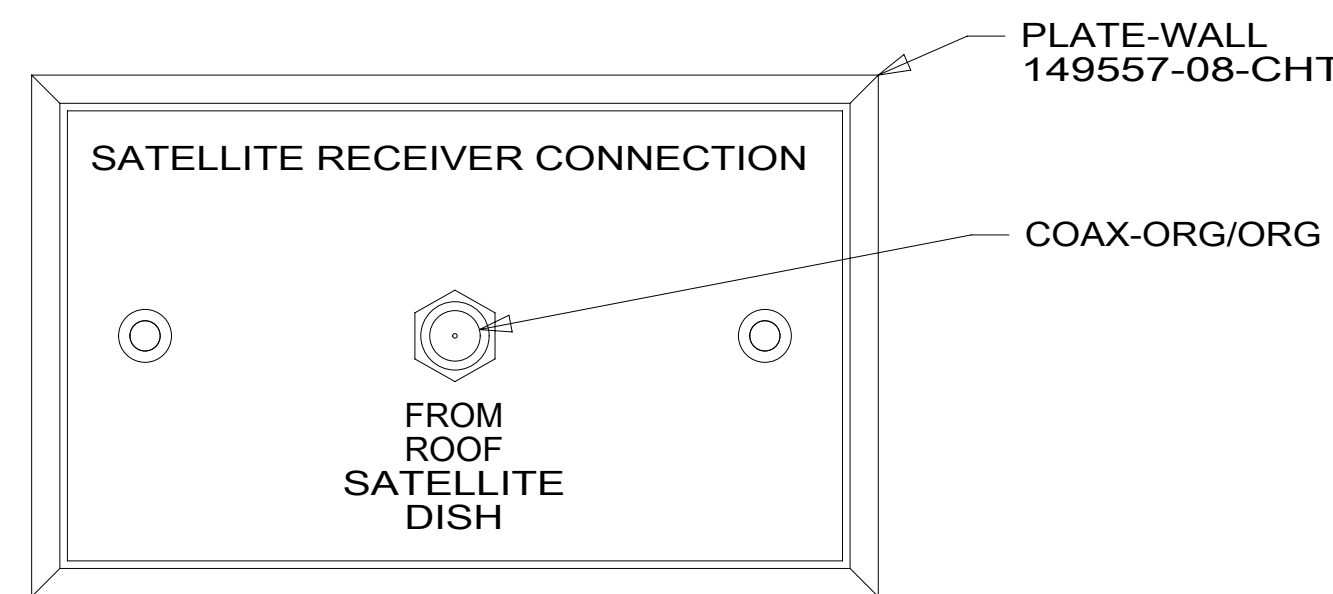
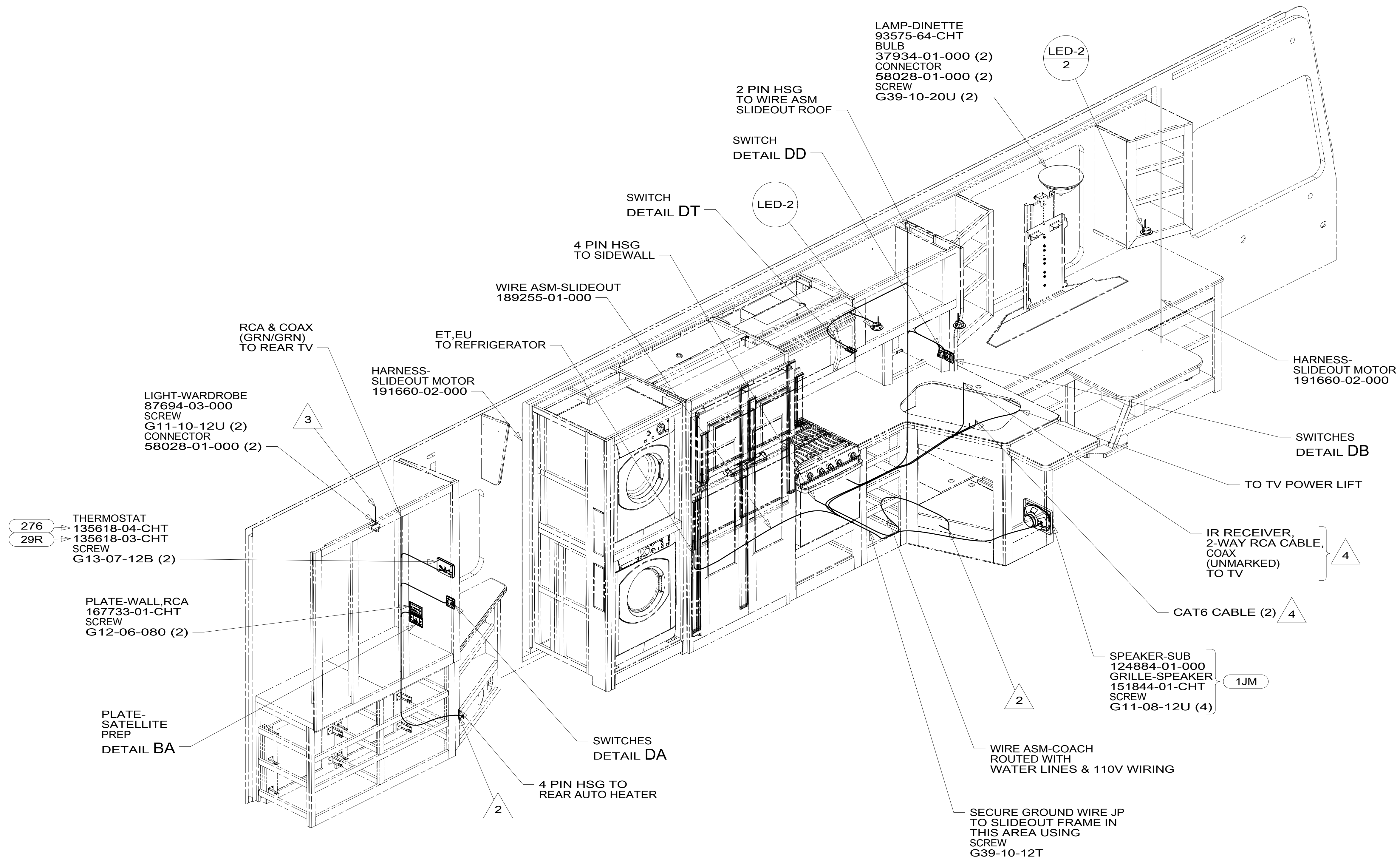
1B1 265

<b>WINNEBAGO INDUSTRIES</b>		COPYRIGHT 2014 WINNEBAGO INDUSTRIES, INC.	
DFT-ORIG		ORIG. DATE	
CHKR		ALL DIMENSIONS ARE IN MILLIMETERS	
P.E.		FIRST USED	
M.E.		15 D33C	
DSNR		MATERIAL:	
UNSPECIFIED TOLERANCES ARE:		DO NOT SCALE DRAWING	
WHOLE DIM (X) ± 3		REFER TO ES0018 FOR FASTENER TIGHTENING GUIDELINES	
ONE-PLACE (X.X) ± 1.5		TITLE:	
TWO-PLACE (X.XX) ± 0.50		WIRING INSTL-BODY,12V	
ANGLE ± 1°		SHEET 1 OF 7	
THIRD ANGLE PROJECTION		PART NO 188996	
REV		REF: 1 04-Feb-2015	

FOR ELECTRICAL  
TORQUE  
SPECIFICATIONS  
SEE DWG NO.  
128783-01-000

FOR  
ELECTRICAL  
CALLOUTS  
SEE DWG NO.  
121339-01-000

\*188996\*



DETAIL BA

- |     |                              |
|-----|------------------------------|
| 1JM | HOME THEATER SOUND SYSTEM    |
| 29R | AC HEAT PUMP-2 HI EFFICIENCY |
| 276 | A/C ROOF-HI EFF (2) W/EMS    |
| 265 | CODES/STANDARDS-CSA/CMVSS    |
| 1B1 | CODES/STANDARDS USA          |

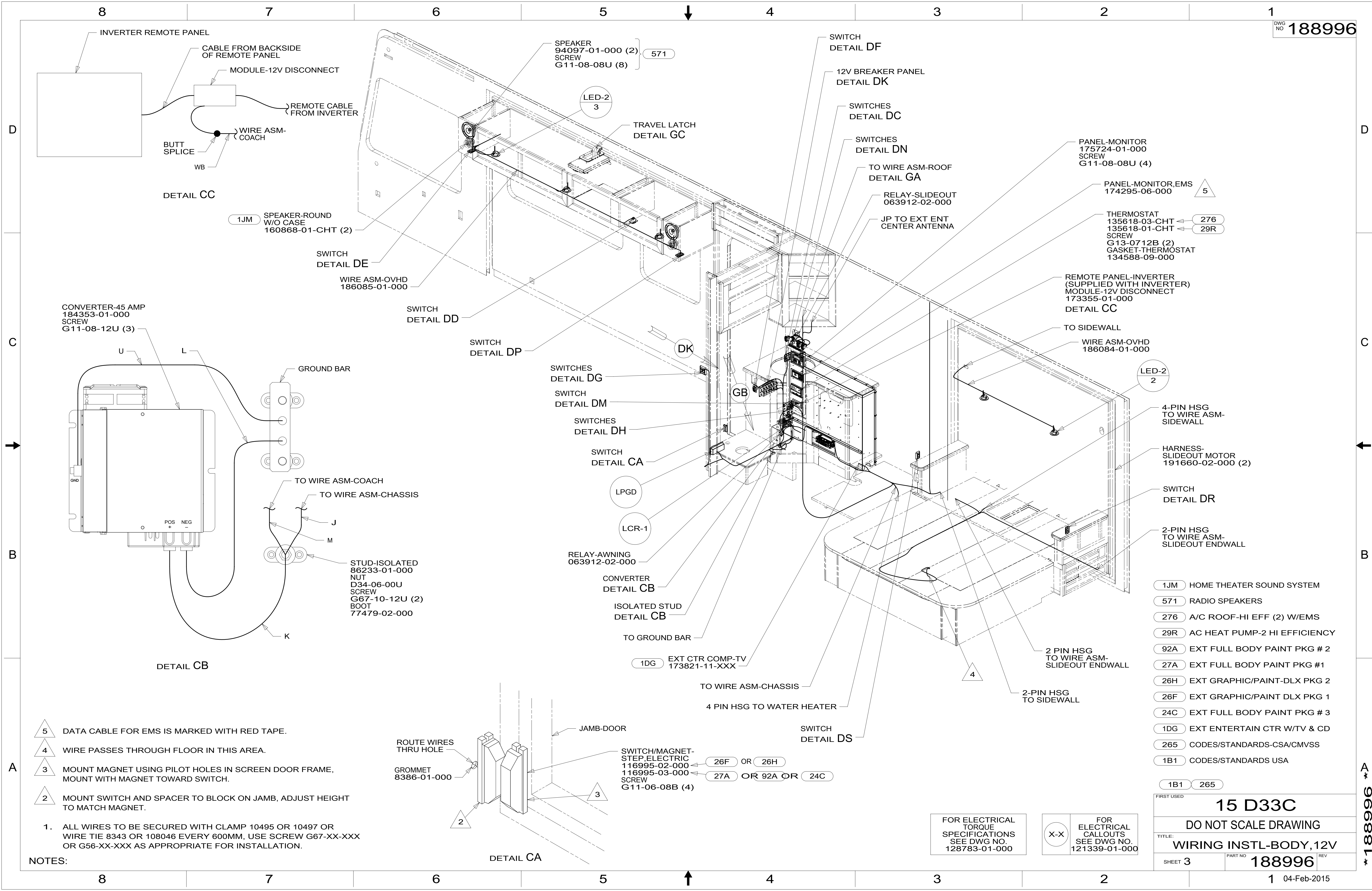
1B1	265
FIRST USED	
15 D33C	
DO NOT SCALE DRAWING	
TITLE:	
WIRING INSTL-BODY,12V	
SHEET 2	PART NO 188996
	REV

FOR ELECTRICAL  
TORQUE  
SPECIFICATIONS  
SEE DWG NO.  
128783-01-000

FOR  
ELECTRICAL  
CALLOUTS  
SEE DWG NO.  
121339-01-000

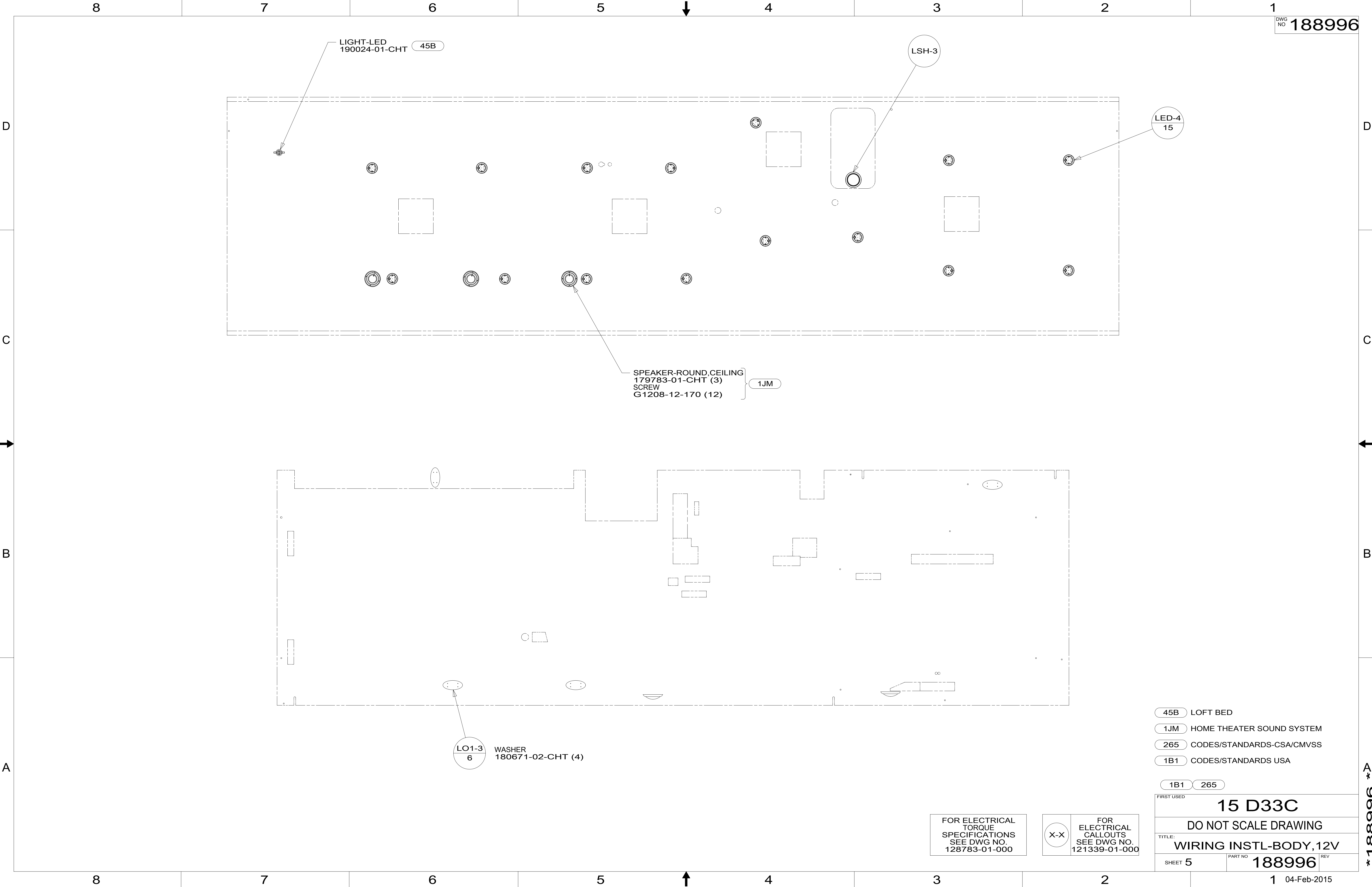
X-X

NOTES:









LIGHT-LED  
190024-01-CHT 45B

LSH-3

LED-4  
15

SPEAKER-ROUND,CEILING  
179783-01-CHT (3)  
SCREW  
G1208-12-170 (12)

1JM

LO1-3  
6

WASHER  
180671-02-CHT (4)

FOR ELECTRICAL  
TORQUE  
SPECIFICATIONS  
SEE DWG NO.  
128783-01-000

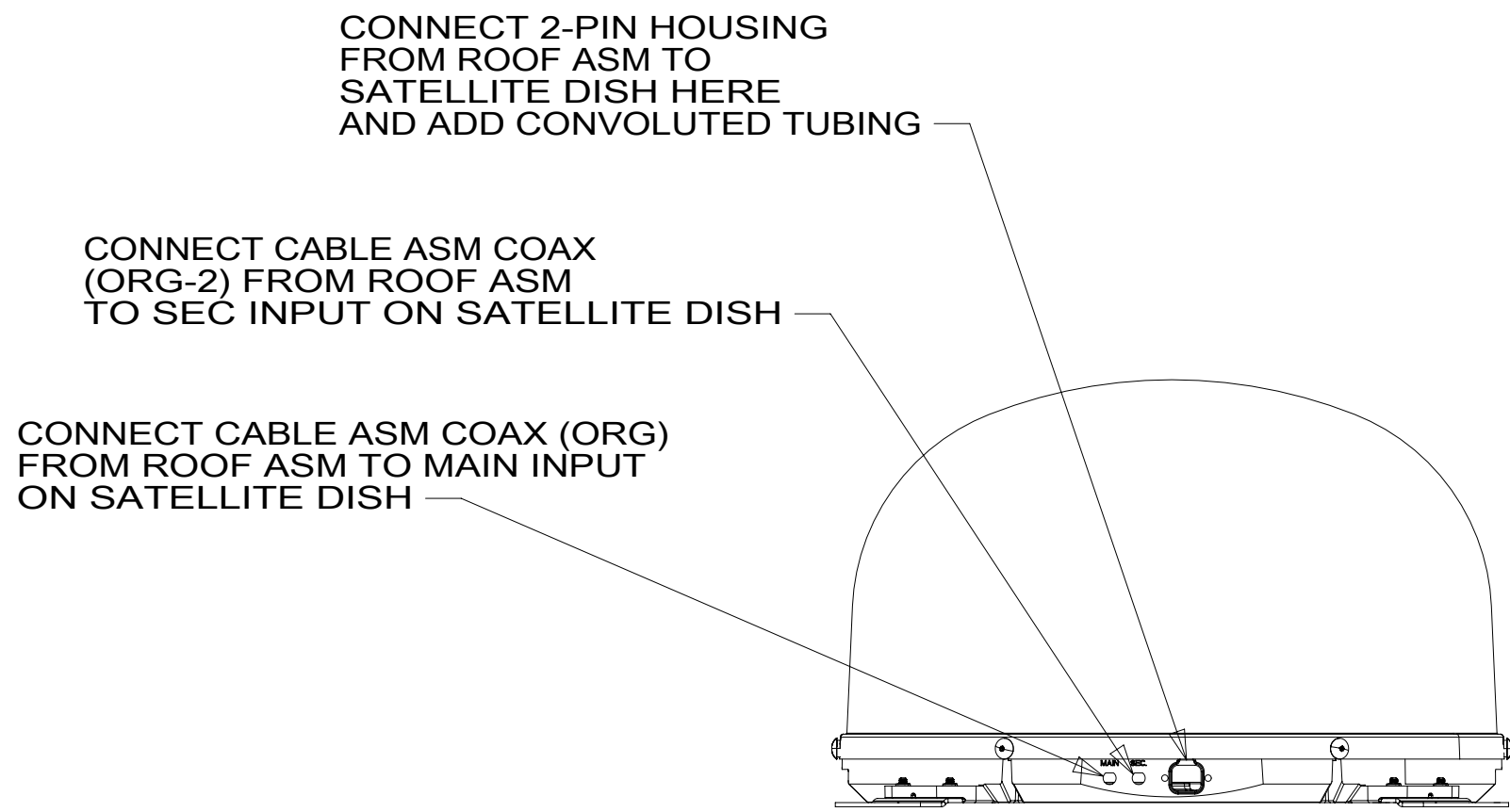
FOR  
ELECTRICAL  
CALLOUTS  
SEE DWG NO.  
121339-01-000

- 45B LOFT BED
- 1JM HOME THEATER SOUND SYSTEM
- 265 CODES/STANDARDS-CSA/CMVSS
- 1B1 CODES/STANDARDS USA

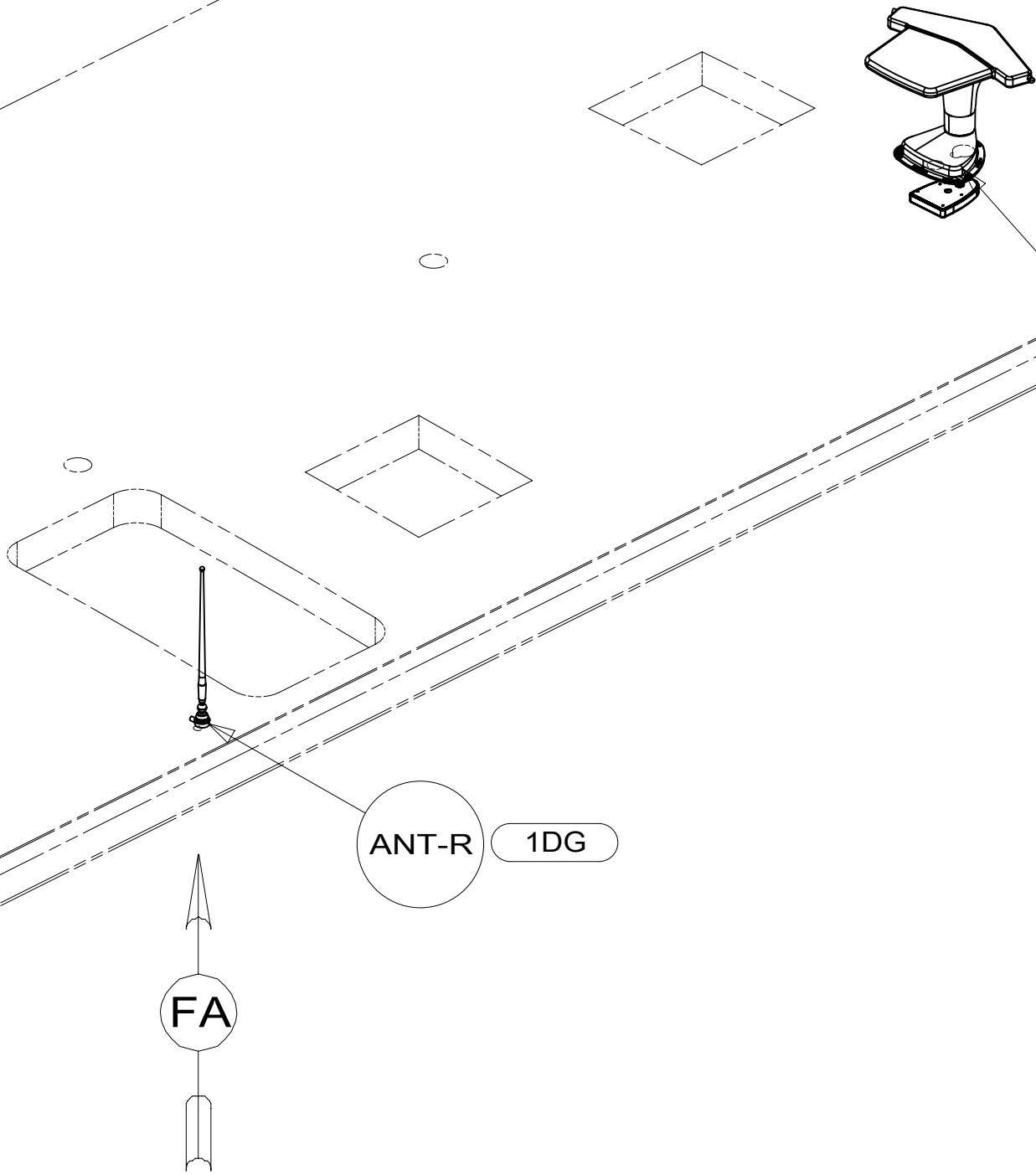
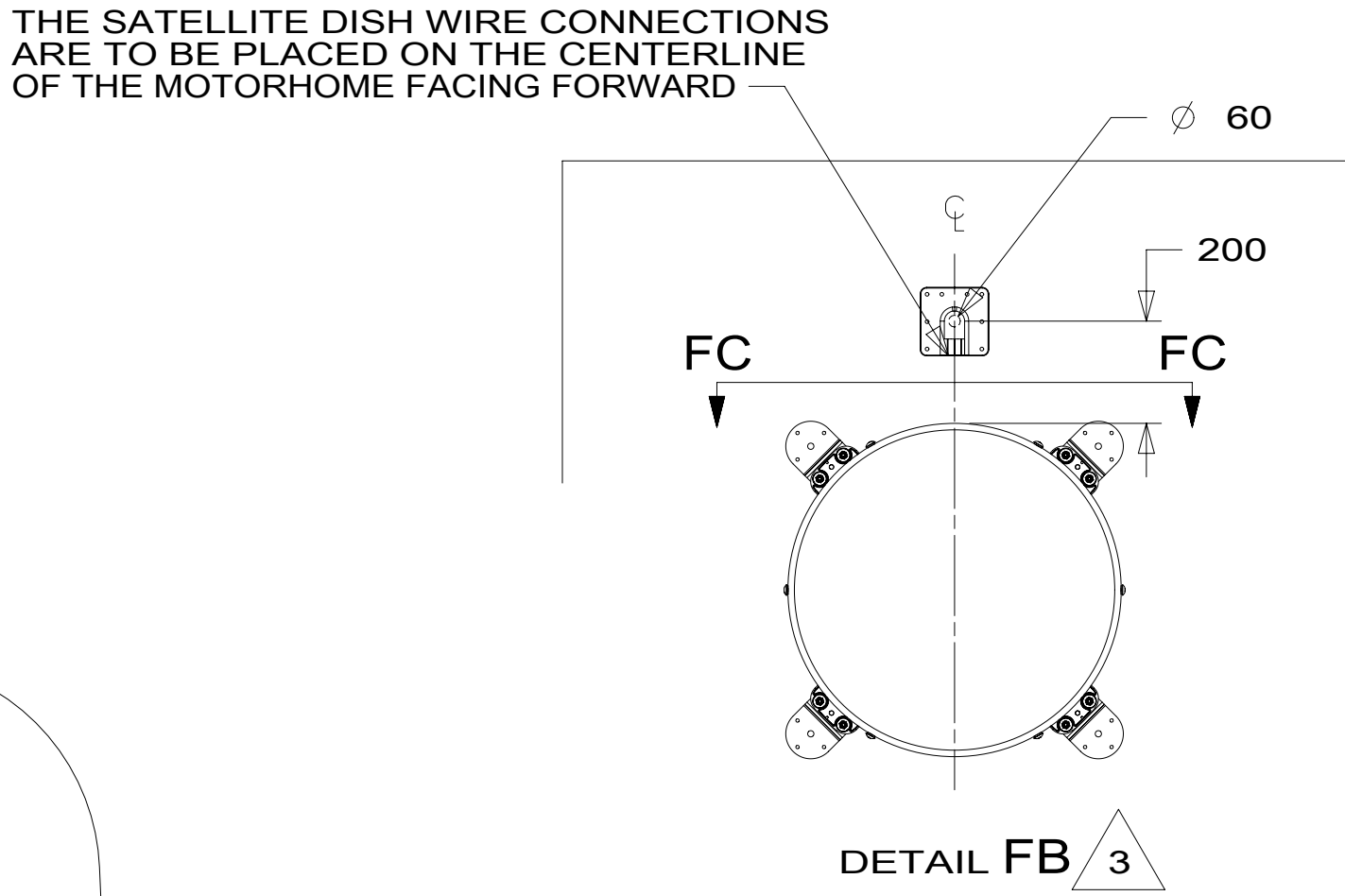
1B1 265

FIRST USED		
15 D33C		
DO NOT SCALE DRAWING		
TITLE: WIRING INSTL-BODY, 12V		
SHEET 5	PART NO 188996	REV

1 04-Feb-2015

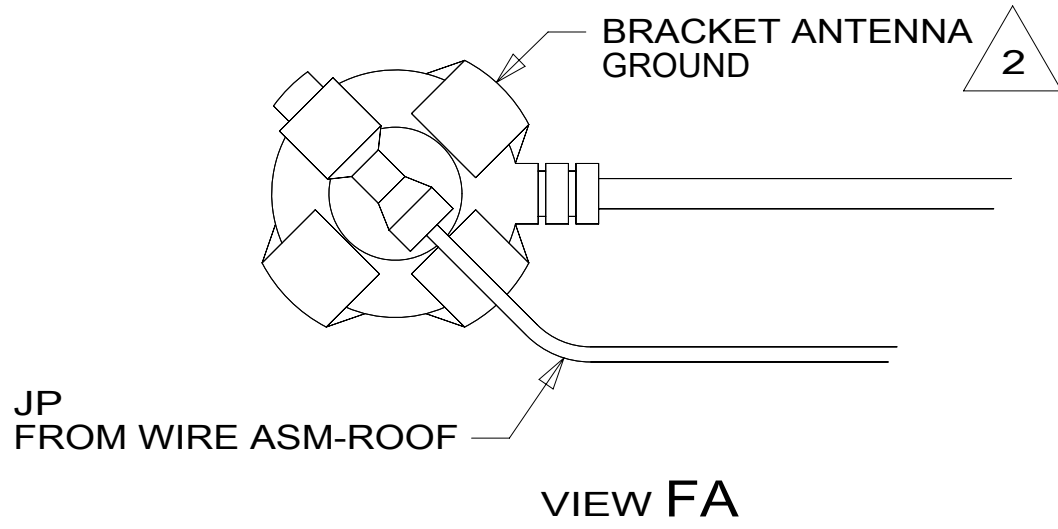


VIEW FC-FC



DA-5 78K

DETAIL FB



- 3 SEE MANUFACTURER'S INSTALLATION FOR ADDITIONAL INFORMATION.
- 2 WRAP LEGS AROUND ANTENNA BASE.
- 1 SEE ANTENNA INSTALLATION MANUAL FOR CORRECT INSTALLATION PROCEDURE.

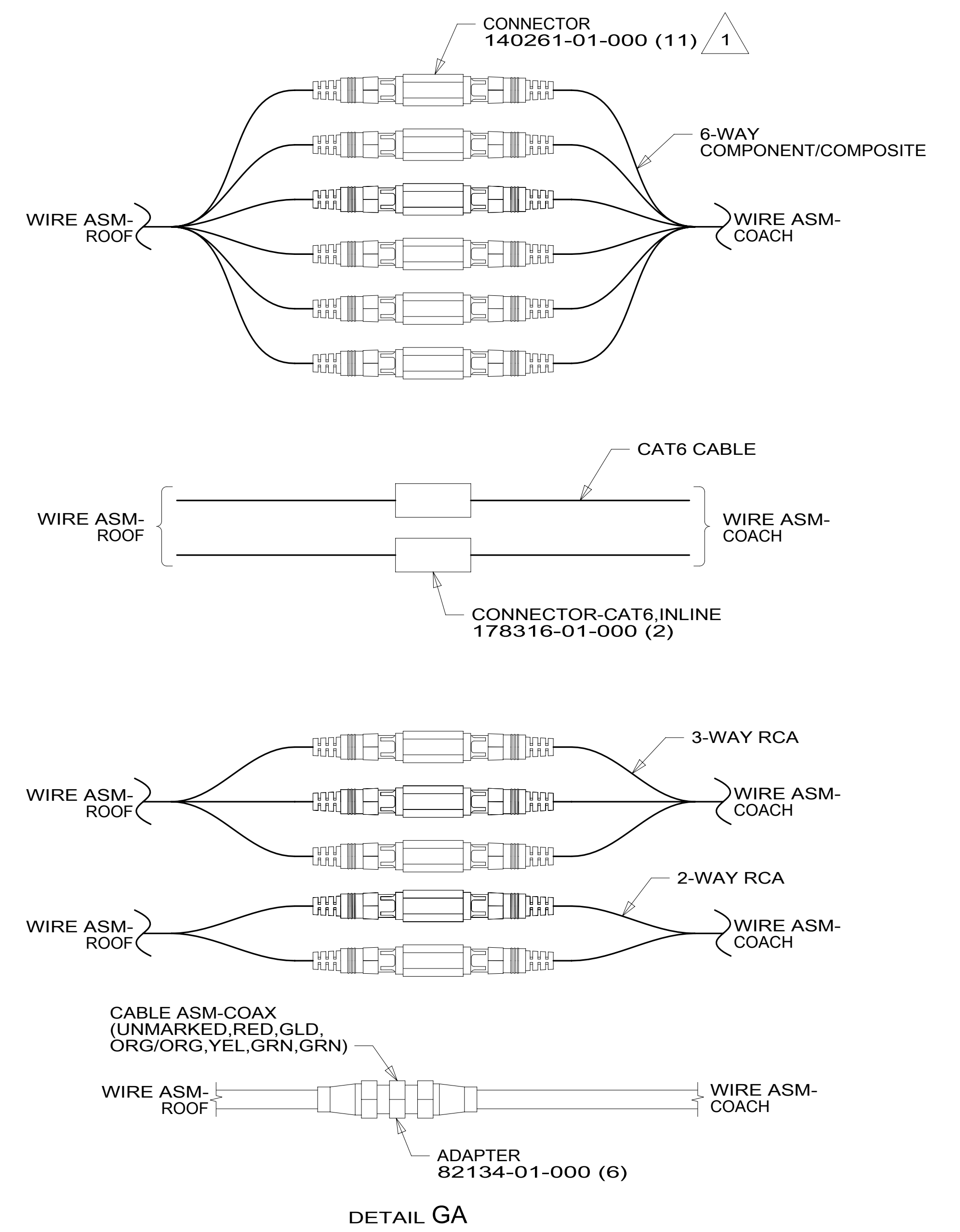
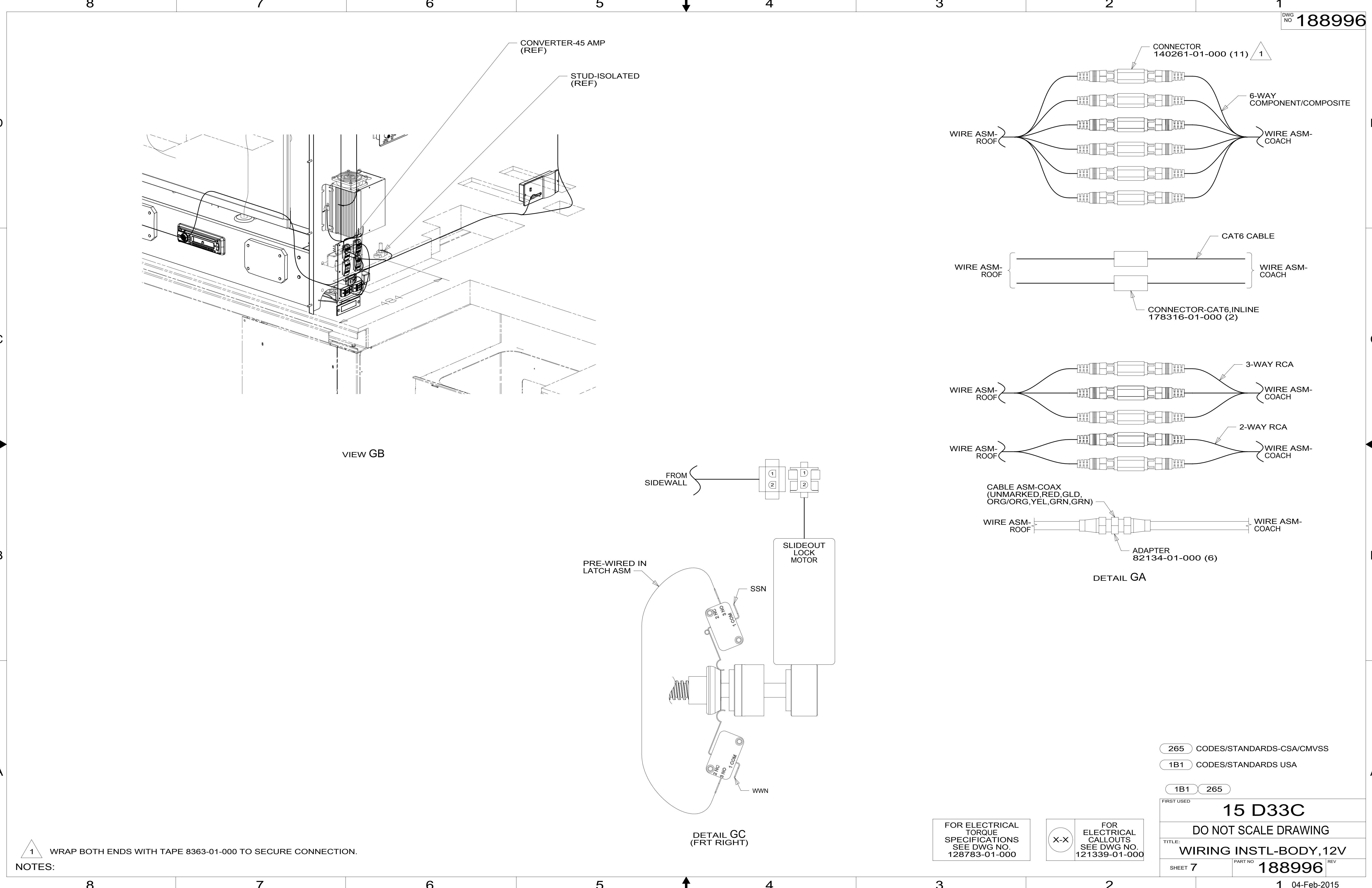
NOTES:

FOR ELECTRICAL  
TORQUE  
SPECIFICATIONS  
SEE DWG NO.  
128783-01-000

FOR  
ELECTRICAL  
CALLOUTS  
SEE DWG NO.  
121339-01-000

- 78K SATELLITE TV SYSTEM AUTO
- 1DG EXT ENTERTAIN CTR W/TV & CD
- 265 CODES/STANDARDS-CSA/CMVSS
- 1B1 CODES/STANDARDS USA

FIRST USED		15 D33C	
TITLE:		DO NOT SCALE DRAWING	
SHEET 6		WIRING INSTL-BODY, 12V	
PART NO		188996	
REV		1 04-Feb-2015	



NOTES:

1 WRAP BOTH ENDS WITH TAPE 8363-01-000 TO SECURE CONNECTION.

FOR ELECTRICAL TORQUE SPECIFICATIONS SEE DWG NO. 128783-01-000

X-X

FOR ELECTRICAL CALLOUTS SEE DWG NO. 121339-01-000

265	CODES/STANDARDS-CSA/CMVSS
1B1	CODES/STANDARDS USA
1B1	265
FIRST USED	
15 D33C	
DO NOT SCALE DRAWING	
TITLE: WIRING INSTL-BODY, 12V	
SHEET 7	PART NO 188996
REV	
1 04-Feb-2015	

A \* 188996