



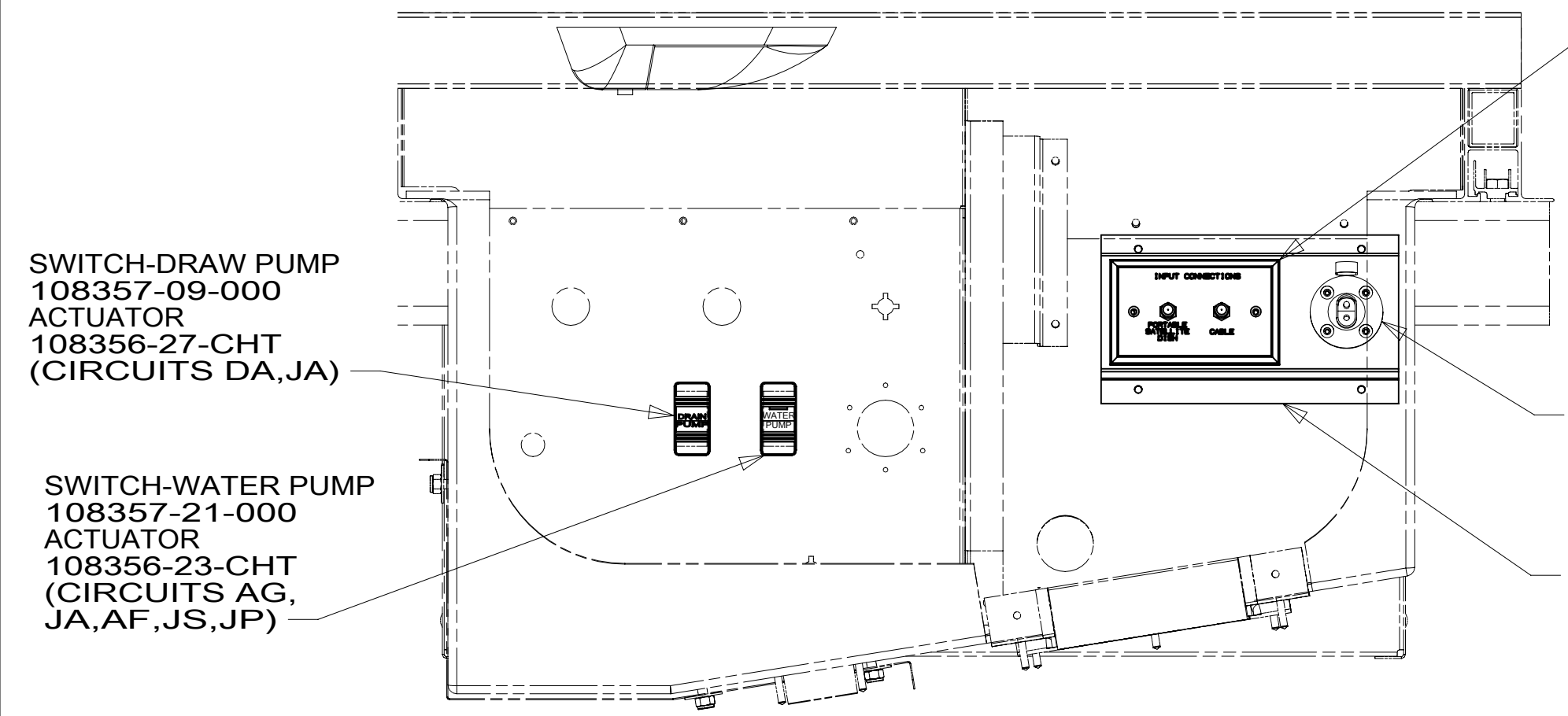
**DANGER**

**Danger of electrical shock, burns or death.** Always remove all power sources before attempting any repair, service or diagnostic work. Power can be present from shore power, generator, inverter or battery. All power sources must be disabled and secured before performing any service.

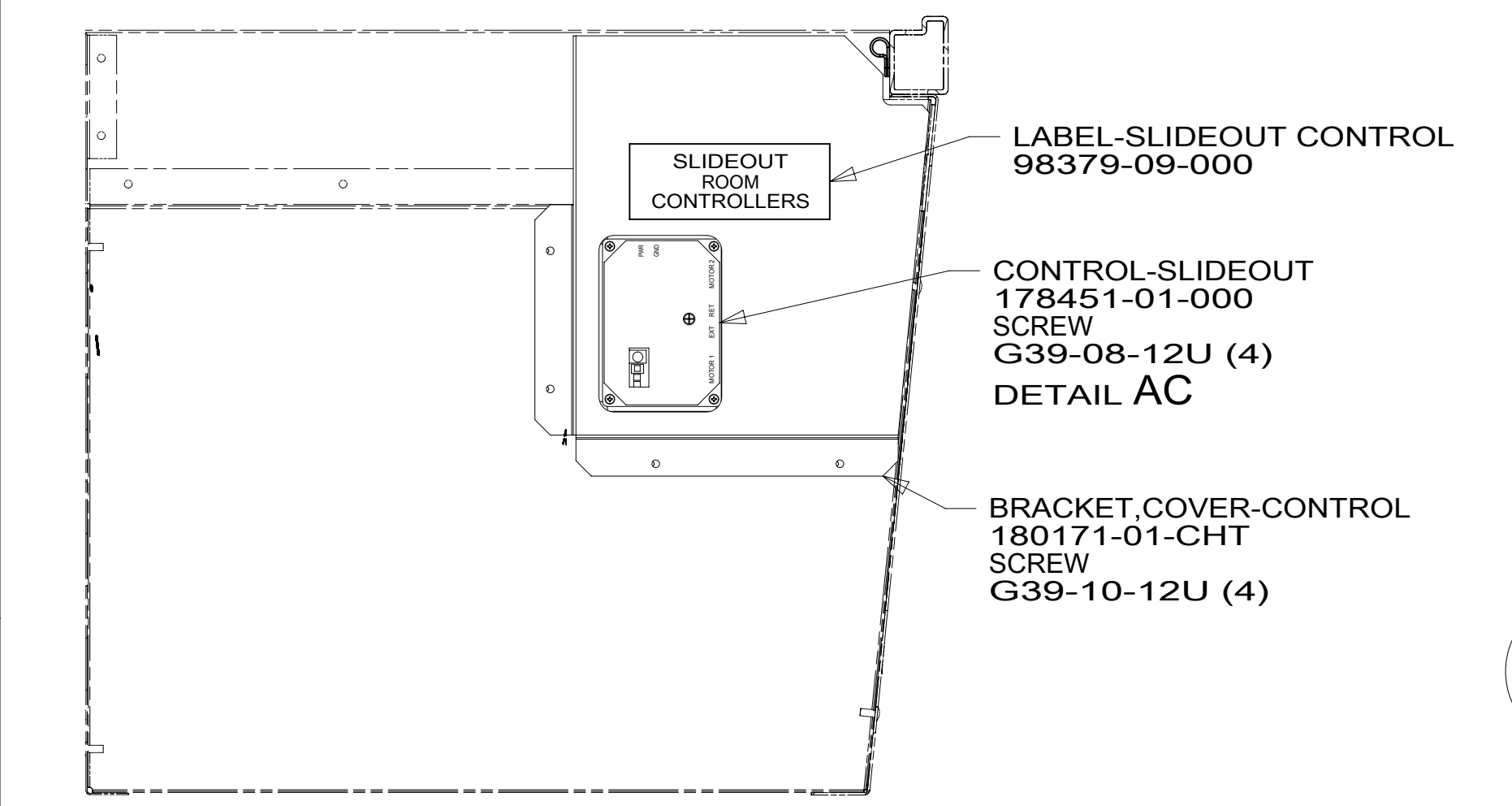


**CAUTION**

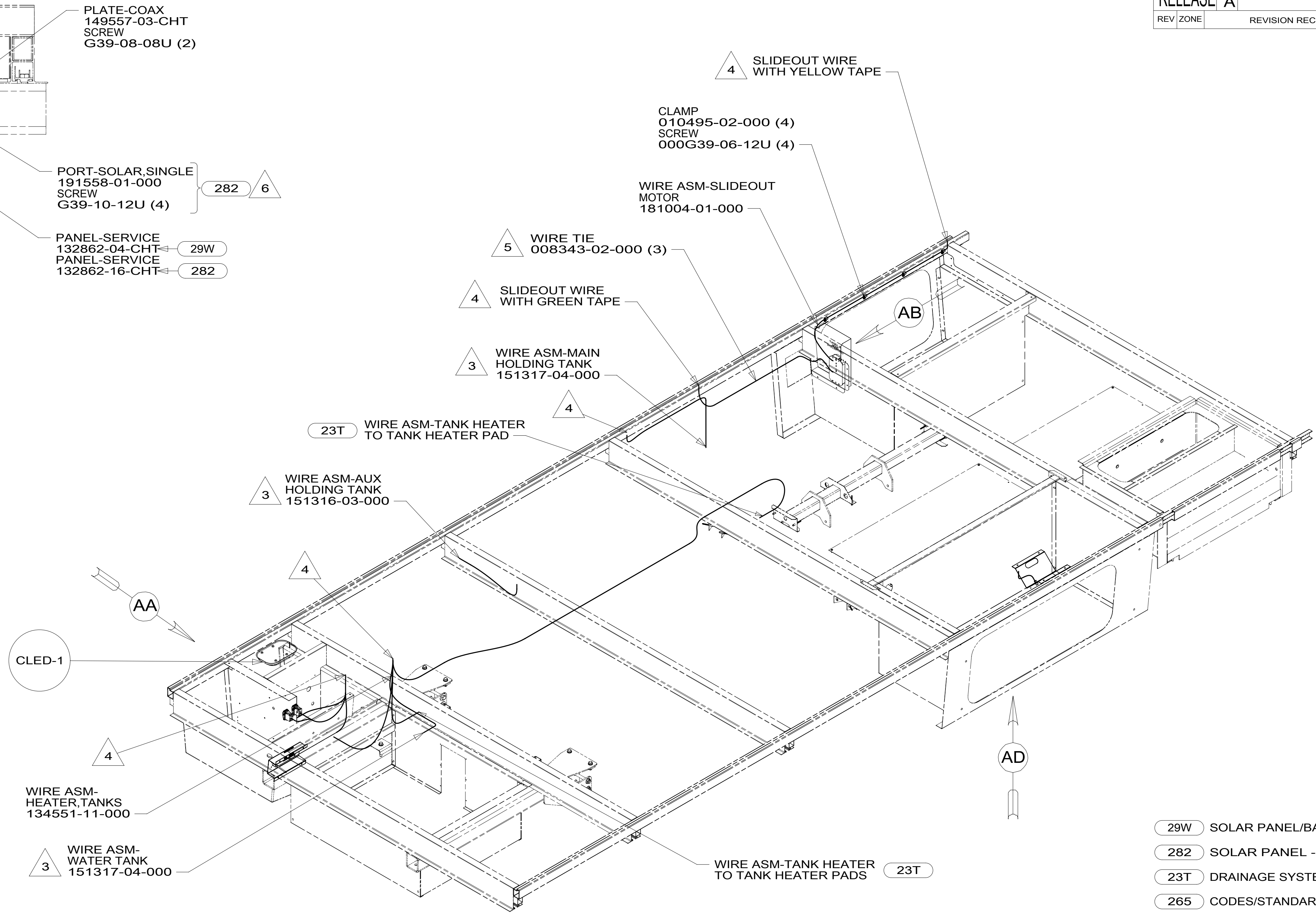
If you lack the skills, tools or equipment to perform diagnostic or repair work leave such work to an authorized Winnebago Industries dealer or other qualified shop.



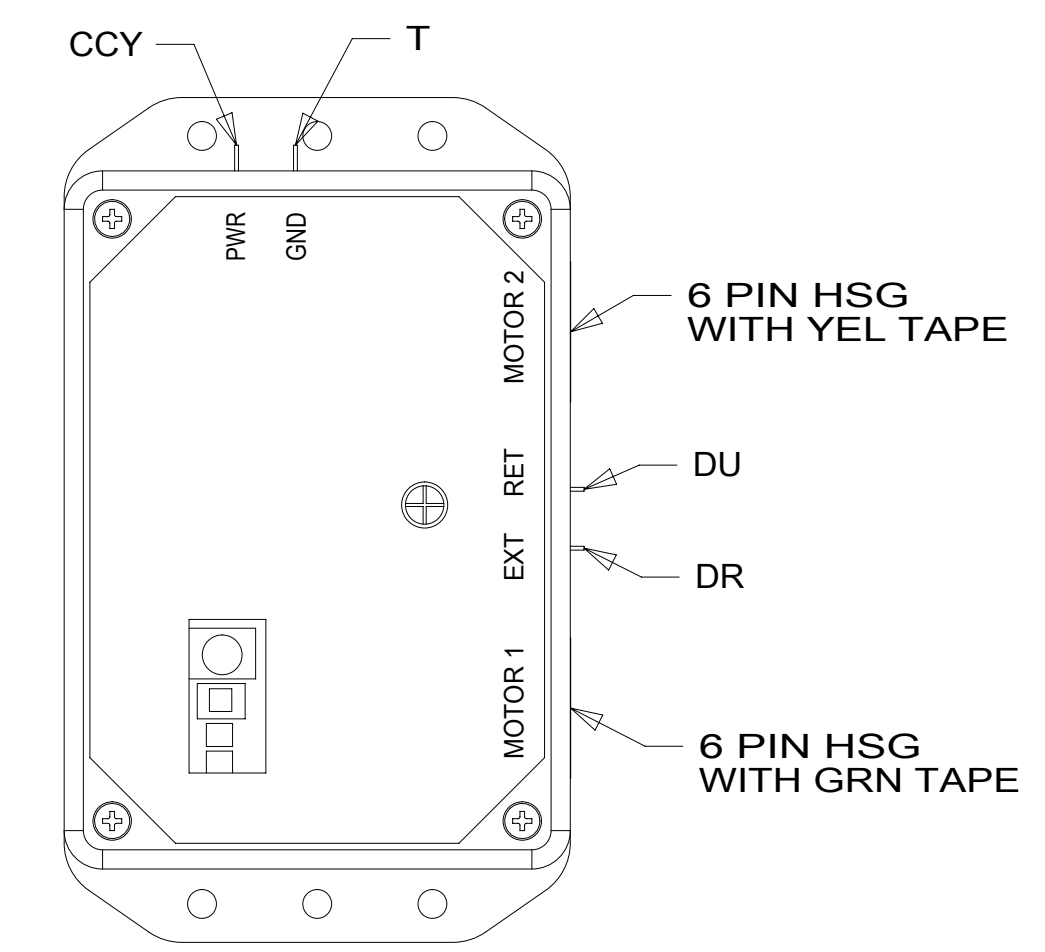
VIEW AA



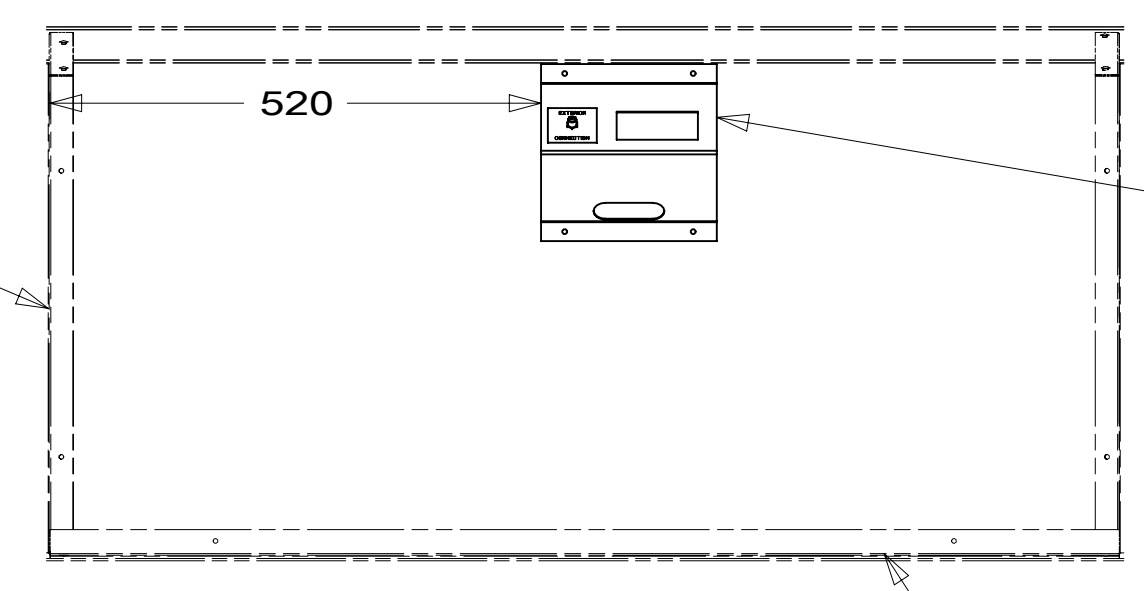
VIEW AB



- 6 SPLICE YELLOW TO RED AND WHITE TO BLACK.
  - 5 SECURE WIRE ASM TO HOLDING TANK CRADLE ASM.
  - 4 WIRE PASSES THROUGH FLOOR IN THIS AREA.
  - 3 PLACE CROSS LOCATOR ON SENSORS OVER DIMPLES ON TANK.
2. ROUTE TANK SENSOR WIRES SO THEY DO NOT PASSOVER SENSORS. USE WIRE TIE MOUNT 155366-01-000 AND WIRE TIE 8343-01-000 AS NEEDED. TANK SURFACE MUST BE CLEANED USING ISOPROPYL ALCOHOL AND PRIMED WITH PRIMER 94.
  1. AT MINIMUM ALL WIRES TO BE SUPPORTED AND SECURED PER CODE REQUIREMENTS. USE CLAMP 10495 OR 10497 OR WIRE TIE 8343 OR 108046 AND SCREW G67-XX-XXX OR G56-XX-XXX AS APPROPRIATE FOR INSTALLATION.



VIEW AC



VIEW AD

FOR ELECTRICAL TORQUE SPECIFICATIONS SEE DWG NO. 128783-01-000

FOR ELECTRICAL CALLOUTS SEE DWG NO. 121339-01-000

- 29W SOLAR PANEL/BATTERY CHRG W/O
- 282 SOLAR PANEL - 100 WATT
- 23T DRAINAGE SYSTEM-HEATED
- 265 CODES/STANDARDS-CSA/CMVSS
- 1B1 CODES/STANDARDS USA

WINNEBAGO COPYRIGHT 2014 WINNEBAGO INDUSTRIES, INC.

DFTR	ORIG. DATE
CHKR	ALL DIMENSIONS ARE IN MILLIMETERS
P.E.	FIRST USED
M.E.	15 524V
DSNR	

UNSPECIFIED TOLERANCES ARE:  
 WHOLE DIM (X) : 3  
 ONE-PLACE (X.X) : 1.5  
 TWO-PLACE (X.XX) : 0.50  
 ANGLE : 1°

THIRD ANGLE PROJECTION

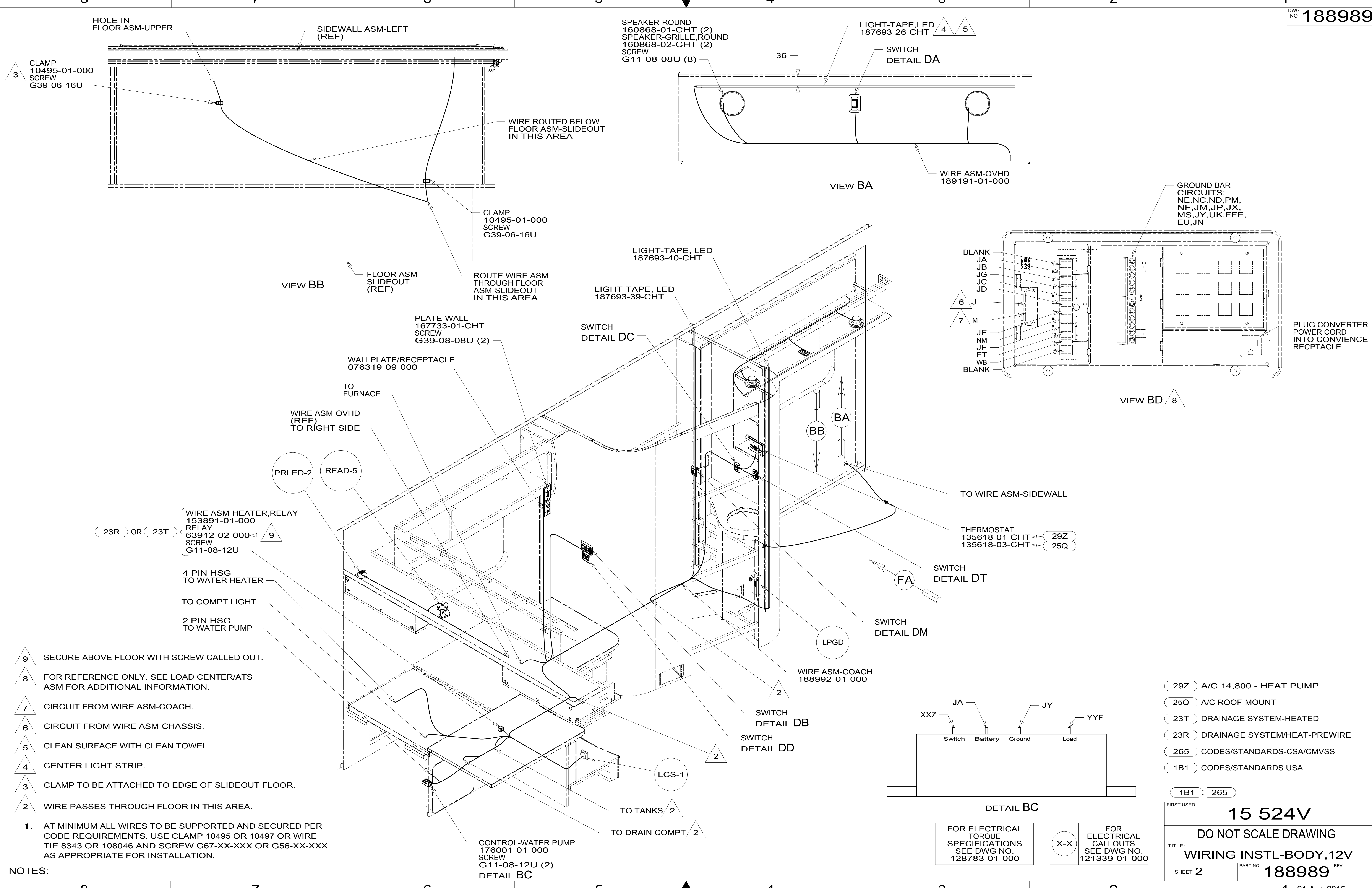
DO NOT SCALE DRAWING REFER TO ES0018 FOR FASTENER TIGHTENING GUIDELINES

TITLE: WIRING INSTL-BODY, 12V

SHEET 1 OF 7 PART NO 188989 REV

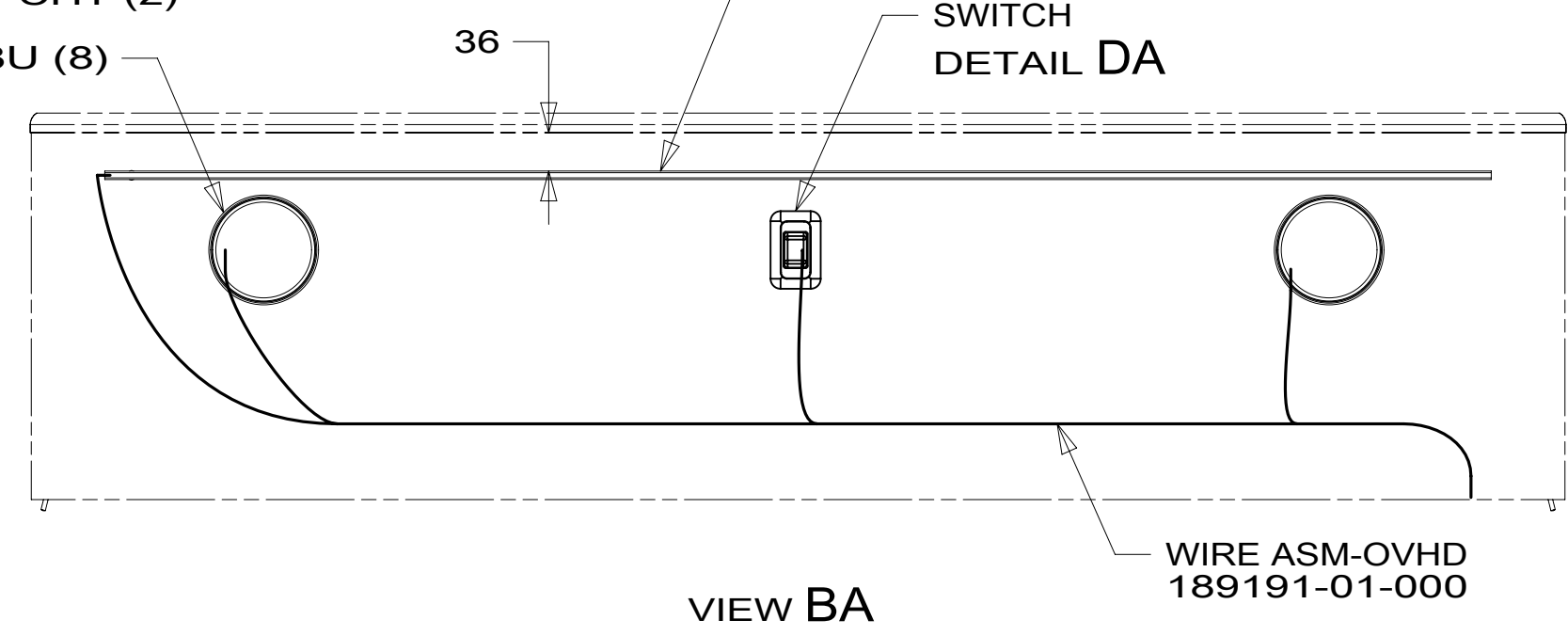
REF: 1 21-Aug-2015

\* 188989 \*



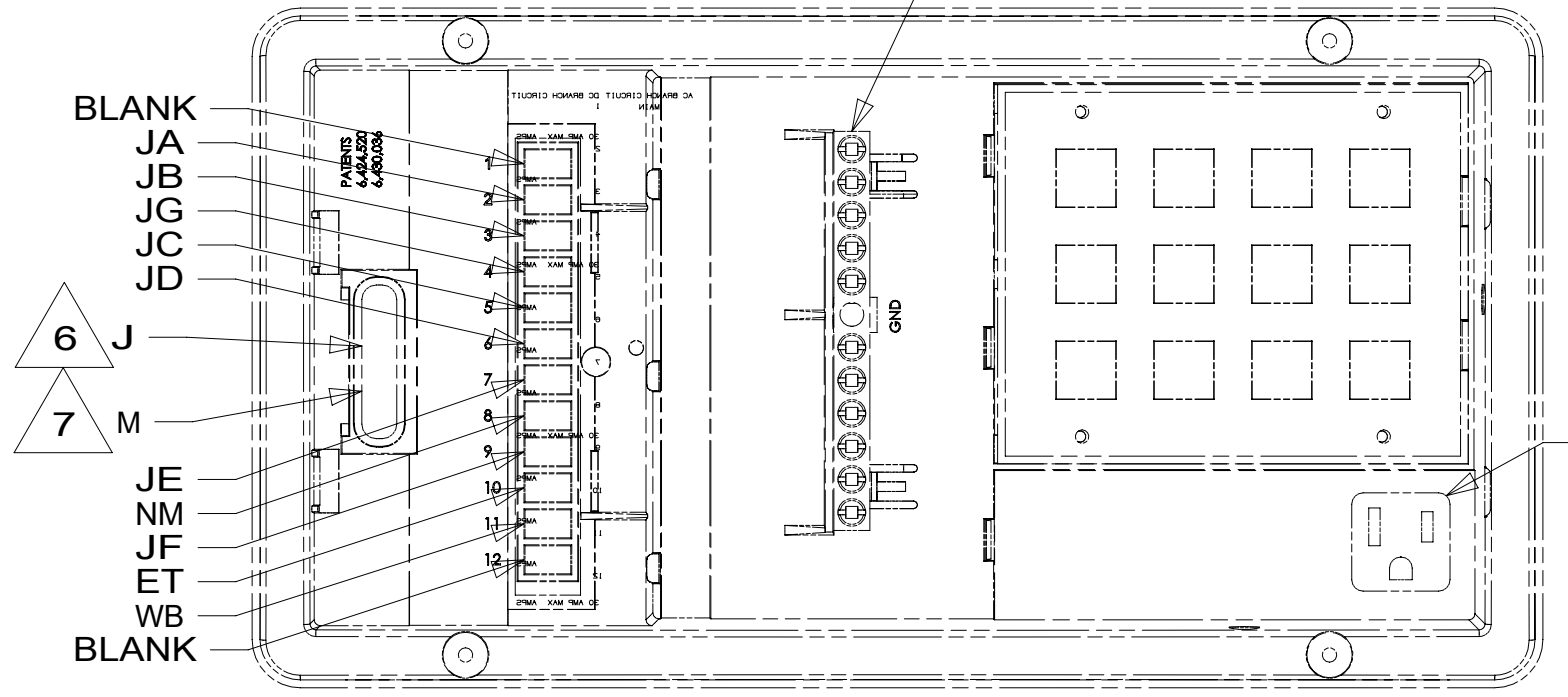
SPEAKER-ROUND  
160868-01-CHT (2)  
SPEAKER-GRILLE,ROUND  
160868-02-CHT (2)  
SCREW  
G11-08-08U (8)

LIGHT-TAPE,LED  
187693-26-CHT  
SWITCH  
DETAIL DA



WIRE ASM-OVHD  
189191-01-000

GROUND BAR  
CIRCUITS:  
NE,NC,ND,PM,  
NF,JM,JP,JX,  
MS,JY,UK,FFE,  
EU,JN



VIEW BD 8

BLANK  
JA  
JB  
JC  
JD  
J  
M  
JE  
NM  
JF  
ET  
WB  
BLANK

PLUG CONVERTER  
POWER CORD  
INTO CONVICIENCE  
RECPTACLE

VIEW BB

FLOOR ASM-  
SLIDEOUT  
(REF)

ROUTE WIRE ASM  
THROUGH FLOOR  
ASM-SLIDEOUT  
IN THIS AREA

LIGHT-TAPE, LED  
187693-40-CHT

SWITCH  
DETAIL DC

PLATE-WALL  
167733-01-CHT  
SCREW  
G39-08-08U (2)

WALLPLATE/RECEPTACLE  
076319-09-000

TO FURNACE

WIRE ASM-OVHD  
(REF)  
TO RIGHT SIDE

PRLED-2 READ-5

WIRE ASM-HEATER,RELAY  
153891-01-000  
RELAY  
63912-02-000  
SCREW  
G11-08-12U

23R OR 23T

4 PIN HSG  
TO WATER HEATER

TO COMPT LIGHT

2 PIN HSG  
TO WATER PUMP

THERMOSTAT  
135618-01-CHT  
135618-03-CHT

SWITCH  
DETAIL DT

SWITCH  
DETAIL DM

LPGD

WIRE ASM-COACH  
188992-01-000

SWITCH  
DETAIL DB

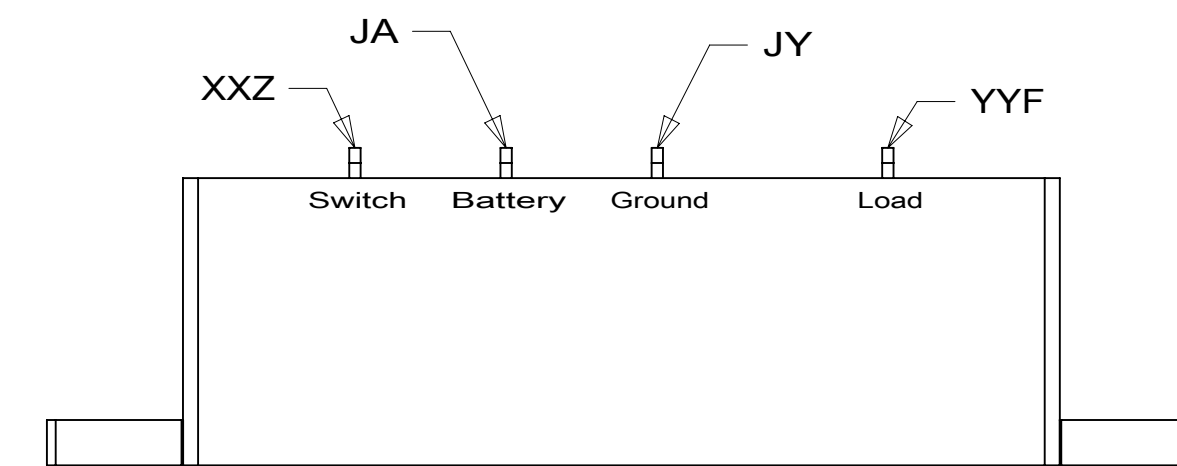
SWITCH  
DETAIL DD

LCS-1

TO TANKS

TO DRAIN COMPT

CONTROL-WATER PUMP  
176001-01-000  
SCREW  
G11-08-12U (2)  
DETAIL BC



DETAIL BC

FOR ELECTRICAL  
TORQUE  
SPECIFICATIONS  
SEE DWG NO.  
128783-01-000

FOR ELECTRICAL  
CALLOUTS  
SEE DWG NO.  
121339-01-000

- 29Z A/C 14,800 - HEAT PUMP
- 25Q A/C ROOF-MOUNT
- 23T DRAINAGE SYSTEM-HEATED
- 23R DRAINAGE SYSTEM/HEAT-PREWIRE
- 265 CODES/STANDARDS-CSA/CMVSS
- 1B1 CODES/STANDARDS USA

FIRST USED		15 524V	
DO NOT SCALE DRAWING			
TITLE: WIRING INSTL-BODY, 12V			
SHEET 2	PART NO	188989	REV
		1	21-Aug-2015

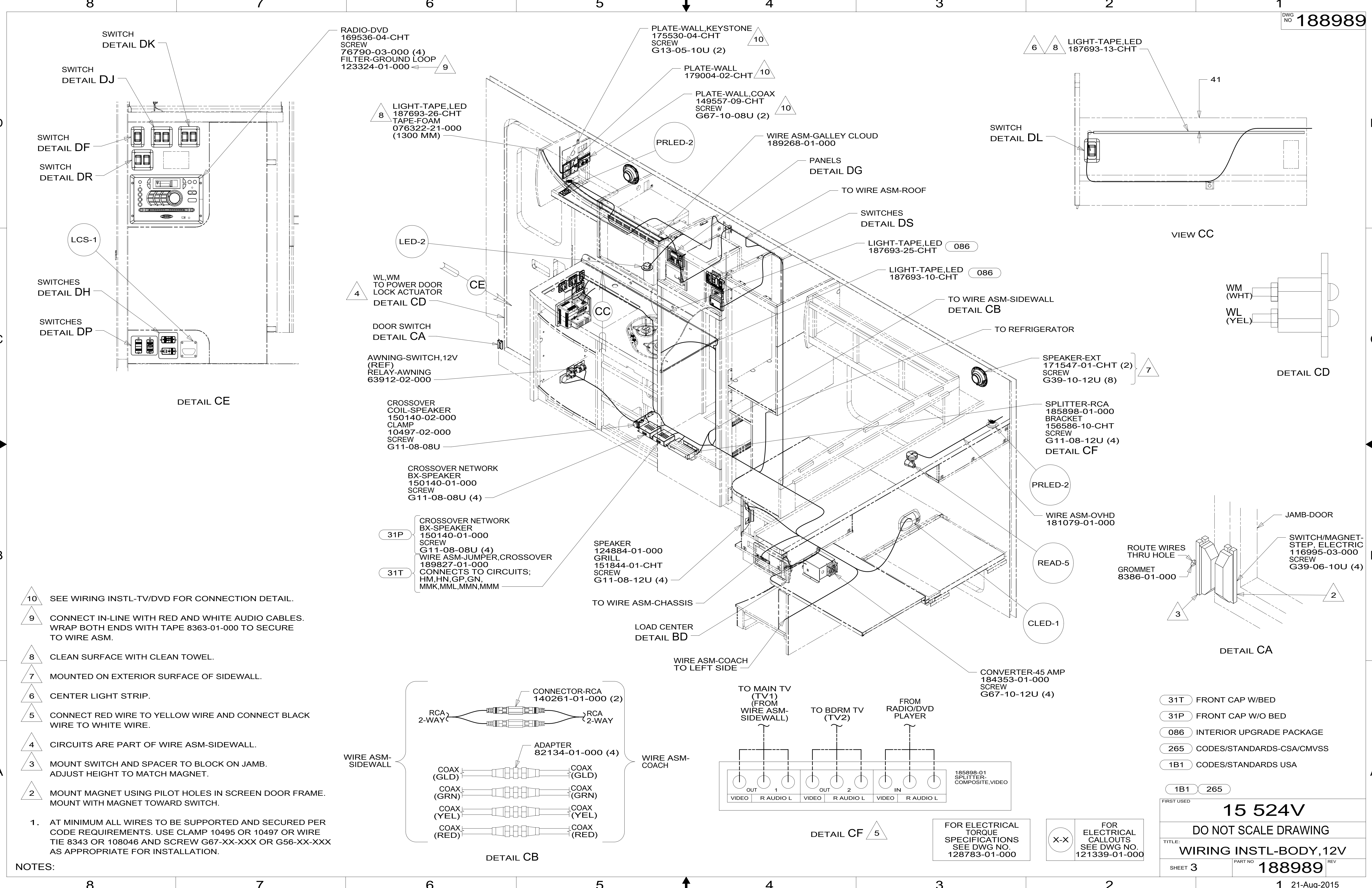
- 9 SECURE ABOVE FLOOR WITH SCREW CALLED OUT.
- 8 FOR REFERENCE ONLY. SEE LOAD CENTER/ATS ASM FOR ADDITIONAL INFORMATION.
- 7 CIRCUIT FROM WIRE ASM-COACH.
- 6 CIRCUIT FROM WIRE ASM-CHASSIS.
- 5 CLEAN SURFACE WITH CLEAN TOWEL.
- 4 CENTER LIGHT STRIP.
- 3 CLAMP TO BE ATTACHED TO EDGE OF SLIDEOUT FLOOR.
- 2 WIRE PASSES THROUGH FLOOR IN THIS AREA.

1. AT MINIMUM ALL WIRES TO BE SUPPORTED AND SECURED PER CODE REQUIREMENTS. USE CLAMP 10495 OR 10497 OR WIRE TIE 8343 OR 108046 AND SCREW G67-XX-XXX OR G56-XX-XXX AS APPROPRIATE FOR INSTALLATION.

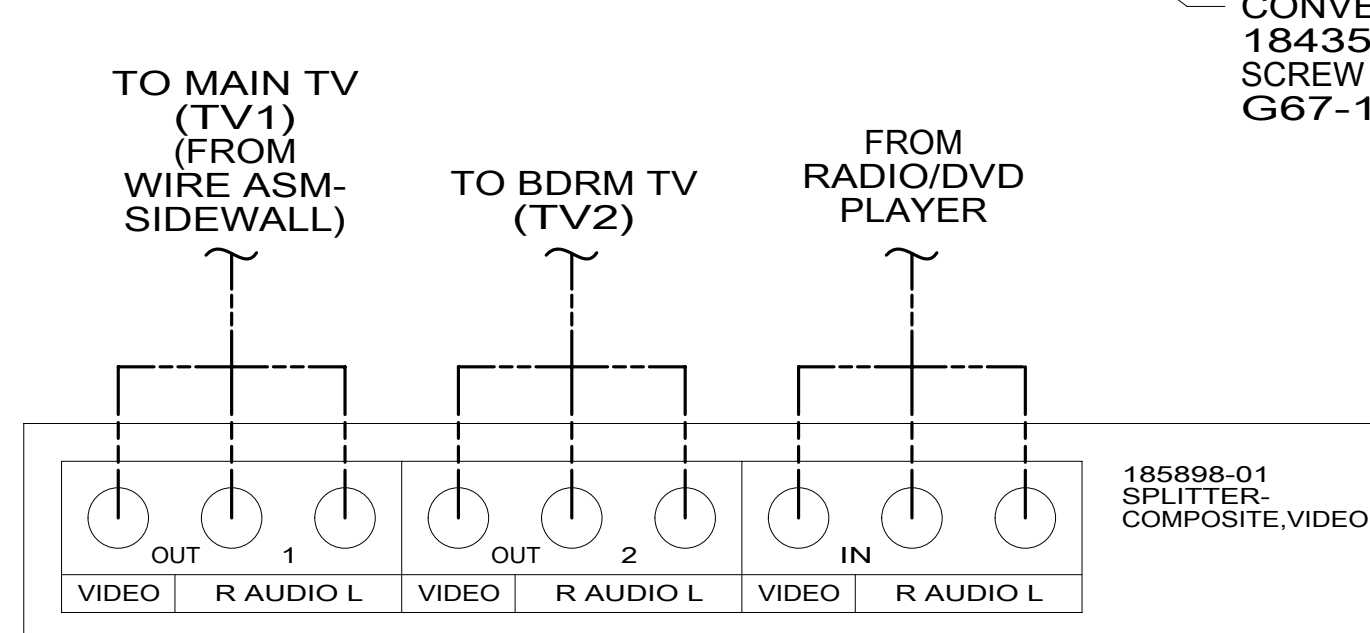
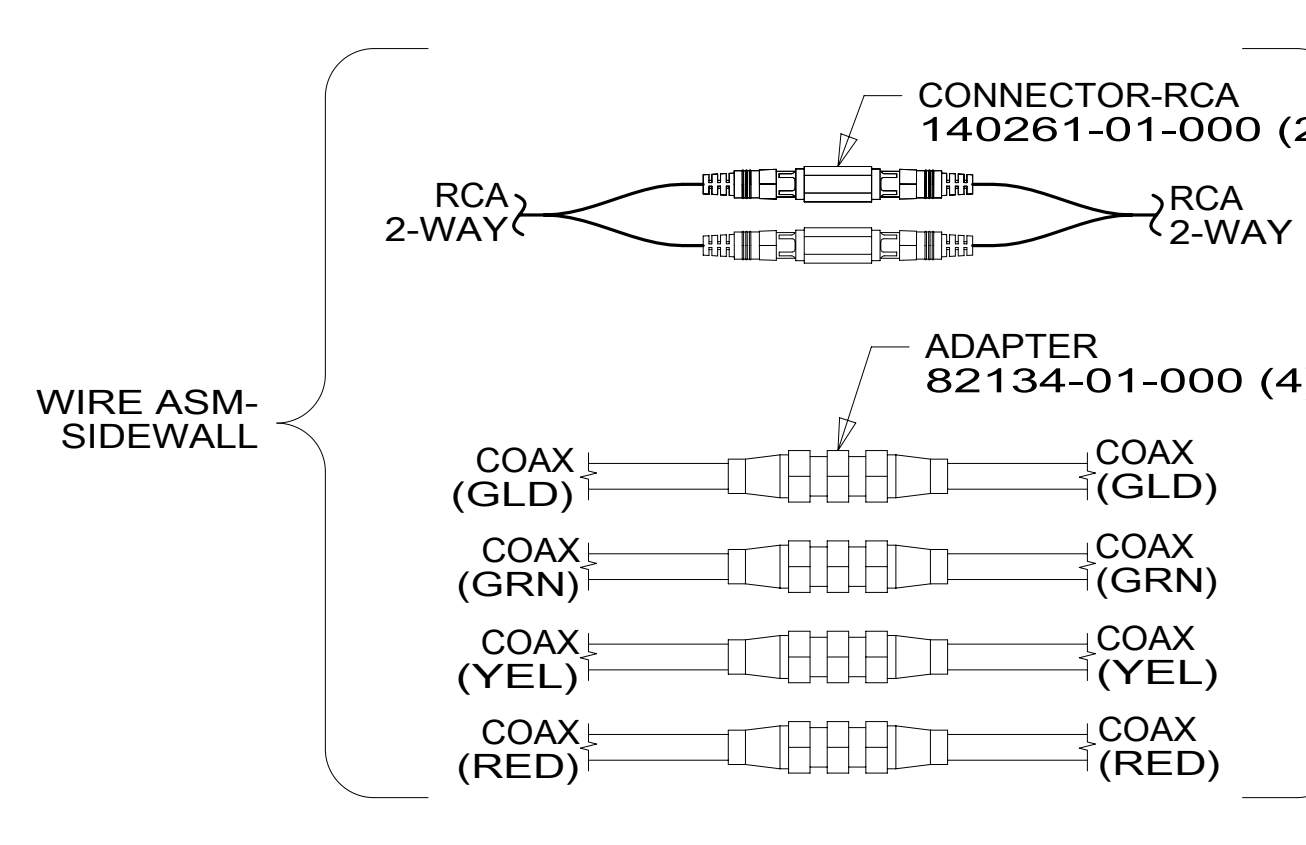
NOTES:

\* 188989





- NOTES:**
- 10 SEE WIRING INSTL-TV/DVD FOR CONNECTION DETAIL.
  - 9 CONNECT IN-LINE WITH RED AND WHITE AUDIO CABLES. WRAP BOTH ENDS WITH TAPE 8363-01-000 TO SECURE TO WIRE ASM.
  - 8 CLEAN SURFACE WITH CLEAN TOWEL.
  - 7 MOUNTED ON EXTERIOR SURFACE OF SIDEWALL.
  - 6 CENTER LIGHT STRIP.
  - 5 CONNECT RED WIRE TO YELLOW WIRE AND CONNECT BLACK WIRE TO WHITE WIRE.
  - 4 CIRCUITS ARE PART OF WIRE ASM-SIDEWALL.
  - 3 MOUNT SWITCH AND SPACER TO BLOCK ON JAMB. ADJUST HEIGHT TO MATCH MAGNET.
  - 2 MOUNT MAGNET USING PILOT HOLES IN SCREEN DOOR FRAME. MOUNT WITH MAGNET TOWARD SWITCH.
1. AT MINIMUM ALL WIRES TO BE SUPPORTED AND SECURED PER CODE REQUIREMENTS. USE CLAMP 10495 OR 10497 OR WIRE TIE 8343 OR 108046 AND SCREW G67-XX-XXX OR G56-XX-XXX AS APPROPRIATE FOR INSTALLATION.



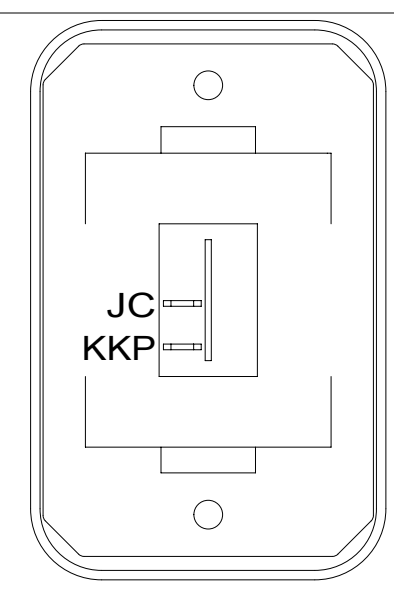
FOR ELECTRICAL TORQUE SPECIFICATIONS SEE DWG NO. 128783-01-000

X-X FOR ELECTRICAL CALLOUTS SEE DWG NO. 121339-01-000

- 31T FRONT CAP W/BED
- 31P FRONT CAP W/O BED
- 086 INTERIOR UPGRADE PACKAGE
- 265 CODES/STANDARDS-CSA/CMVSS
- 1B1 CODES/STANDARDS USA

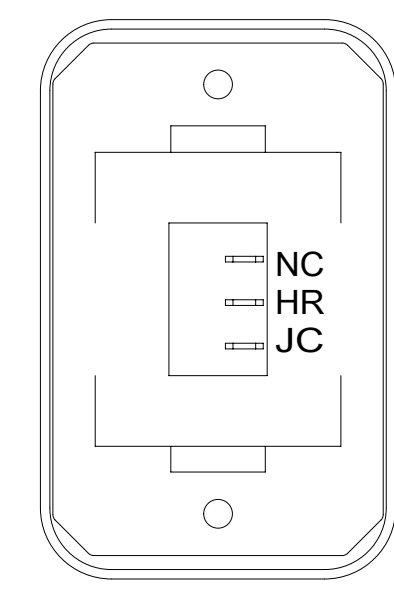
FIRST USED		<b>15 524V</b>	
<b>DO NOT SCALE DRAWING</b>			
<b>WIRING INSTL-BODY, 12V</b>			
SHEET 3	PART NO	188989	REV

\* 188989



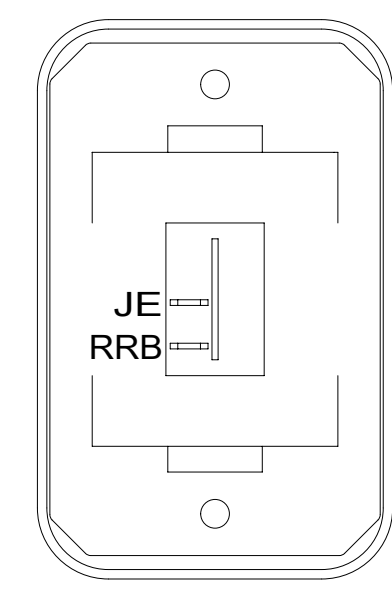
SWITCH-ROCKER  
135740-01-CHT  
SWITCH-BASE  
135741-01-CHT  
SWITCH-BEZEL  
135742-01-CHT  
SCREW  
G11-08-08U (2)

DETAIL DA



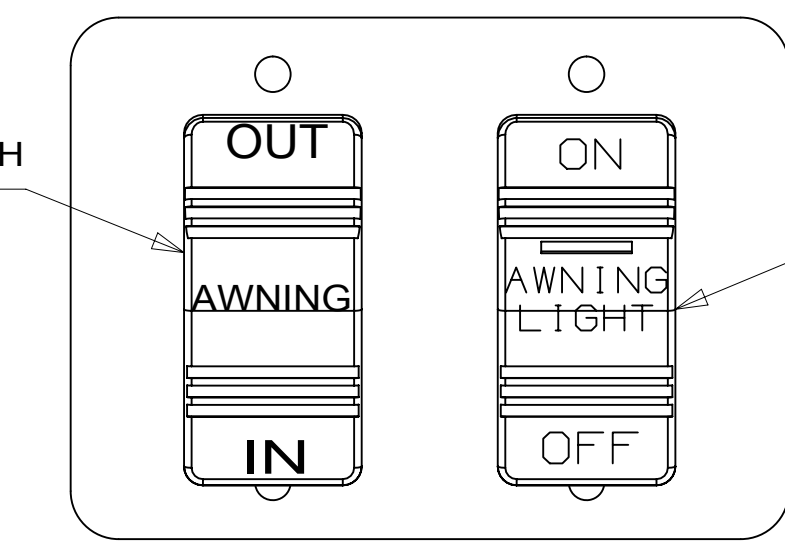
SWITCH-ROCKER  
135740-06-CHT  
SWITCH-BASE  
135741-01-CHT  
SWITCH-BEZEL  
135742-01-CHT  
SCREW  
G11-08-08U (2)  
LABEL  
134563-01-CHT

DETAIL DE 1JD



SWITCH-ROCKER  
135740-01-CHT  
SWITCH-BASE  
135741-01-CHT  
SWITCH-BEZEL  
135742-01-CHT  
SCREW  
G11-08-08U (2)

DETAIL DL

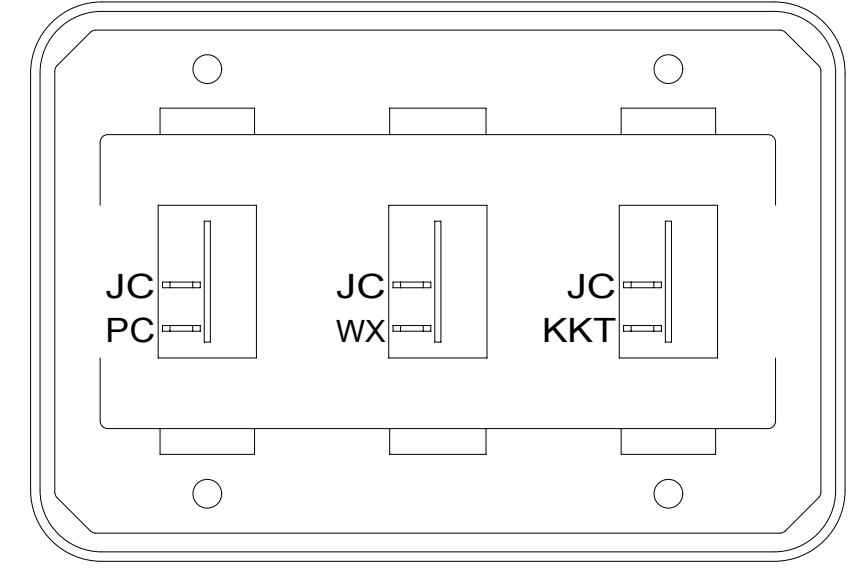


SWITCH-ROCKER  
108357-06-000  
ACTUATOR-SWITCH  
108356-12-CHT

PLATE-SWITCH  
158431-17-CHT  
SCREW  
G11-06-10U (4)

SWITCH-ROCKER  
108357-14-000  
ACTUATOR-SWITCH  
108356-28-CHT

DETAIL DP

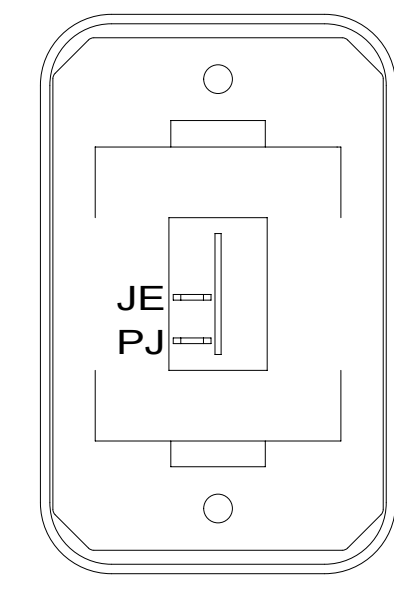


SWITCH-ROCKER  
135740-01-CHT (3)  
SWITCH-BASE  
135741-03-CHT  
SWITCH-BEZEL  
135742-03-CHT  
SCREW  
G11-08-08U (4)

DETAIL DB

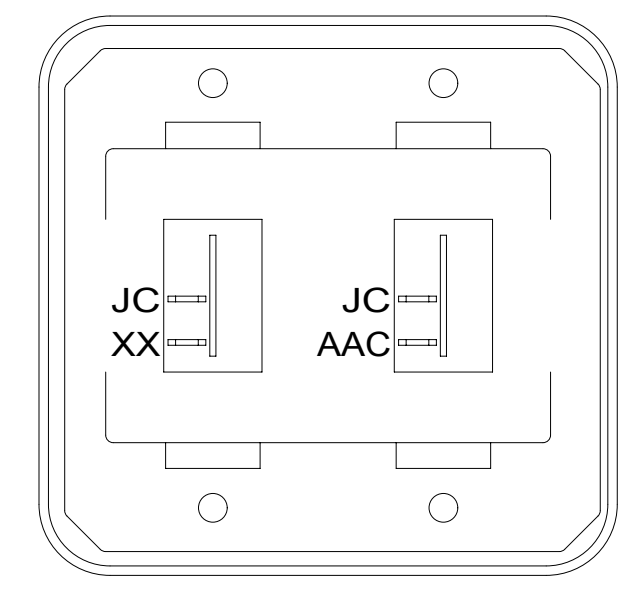
HOLDING TANK HEATER  
TURN OFF When Not In Use  
SEE OPERATORS MANUAL

DETAIL DE 23T OR 23R



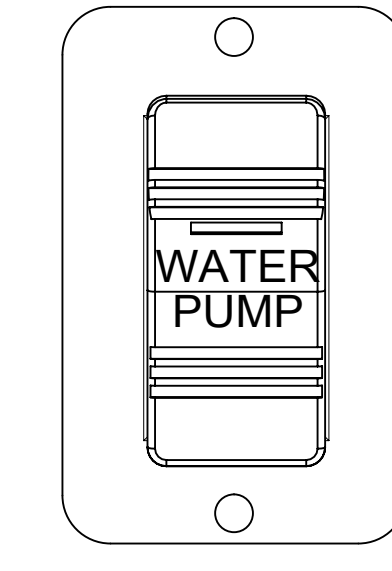
SWITCH-ROCKER  
135740-01-CHT  
SWITCH-BASE  
135741-01-CHT  
SWITCH-BEZEL  
135742-01-CHT  
SCREW  
G11-08-08U (2)

DETAIL DF



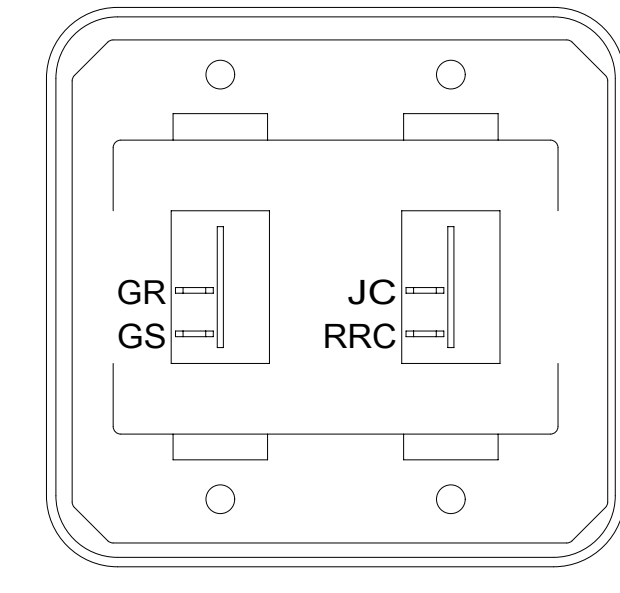
SWITCH-ROCKER  
135740-01-CHT (2)  
SWITCH-BASE  
135741-02-CHT  
SWITCH-BEZEL  
135742-02-CHT  
SCREW  
G11-08-08U (4)

DETAIL DJ



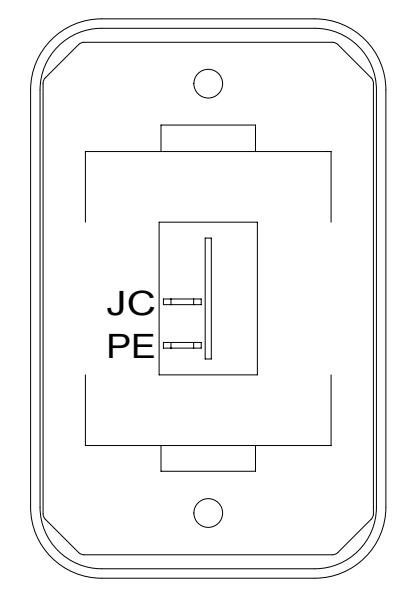
SWITCH-ROCKER  
108357-21-000  
ACTUATOR-SWITCH  
108356-23-CHT  
PLATE-SWITCH  
144363-02-CHT  
SCREW  
G11-06-10U (2)

DETAIL DM



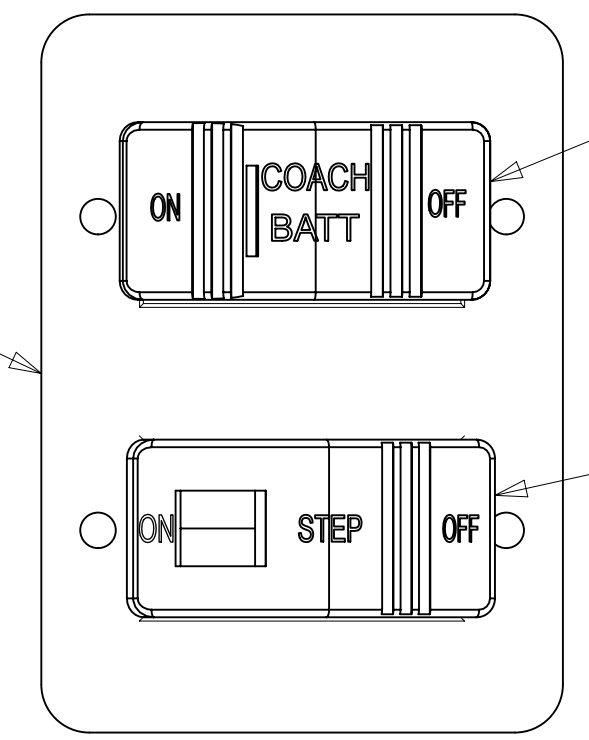
SWITCH-ROCKER  
135740-01-CHT (2)  
SWITCH-BASE  
135741-02-CHT  
SWITCH-BEZEL  
135742-02-CHT  
SCREW  
G11-06-16U (4)

DETAIL DR 41M



SWITCH-ROCKER  
135740-01-CHT  
SWITCH-BASE  
135741-01-CHT  
SWITCH-BEZEL  
135742-01-CHT  
SCREW  
G11-08-08U (2)

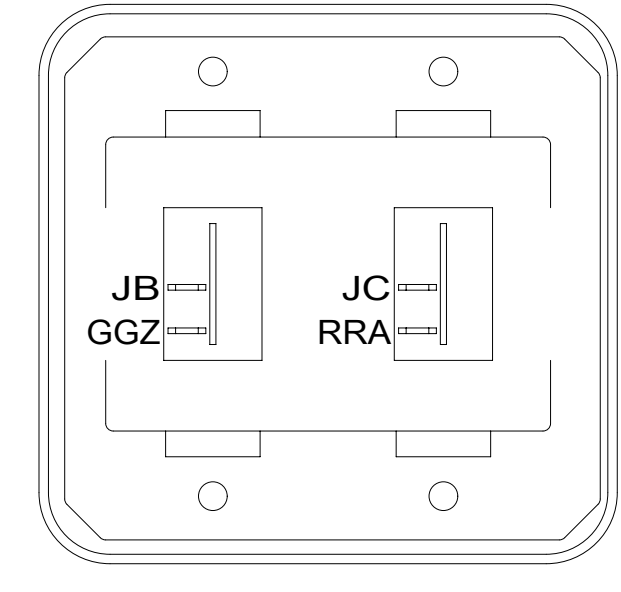
DETAIL DC



SWITCH-BATTERY  
108357-18-000  
ACTUATOR-SWITCH  
108356-19-CHT  
(CIRCUITS LH,LJ  
LG,NF,JF)  
WIRE ASM-THERM  
186796-01-000

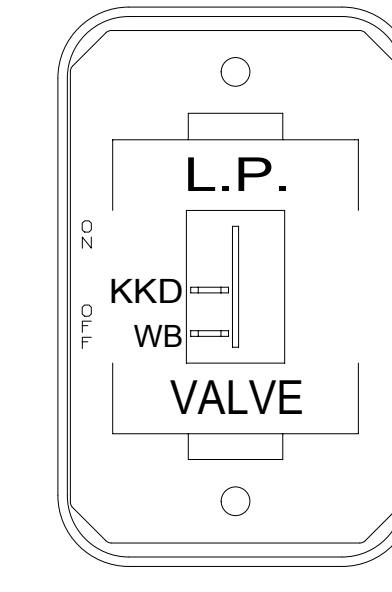
ACTUATOR-SWITCH  
108357-19-000  
(CIRCUITS ER,ES)

DETAIL DH



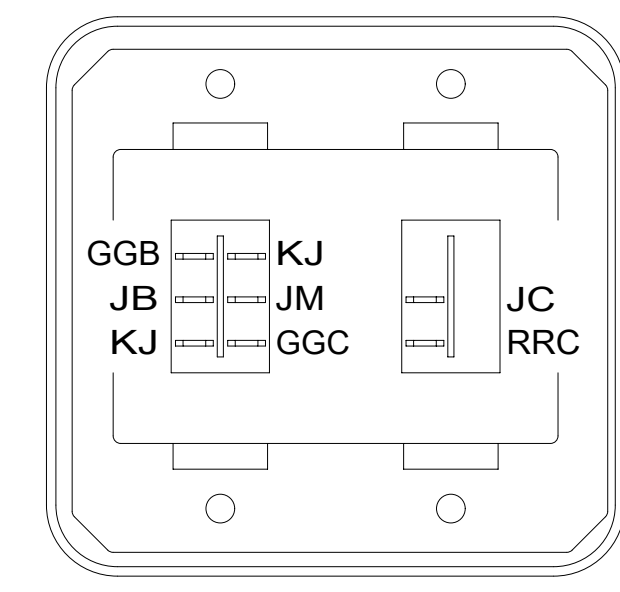
SWITCH-ROCKER  
135740-01-CHT (2)  
SWITCH-BASE  
135741-02-CHT  
SWITCH-BEZEL  
135742-02-CHT  
SCREW  
G11-08-08U (4)

DETAIL DK



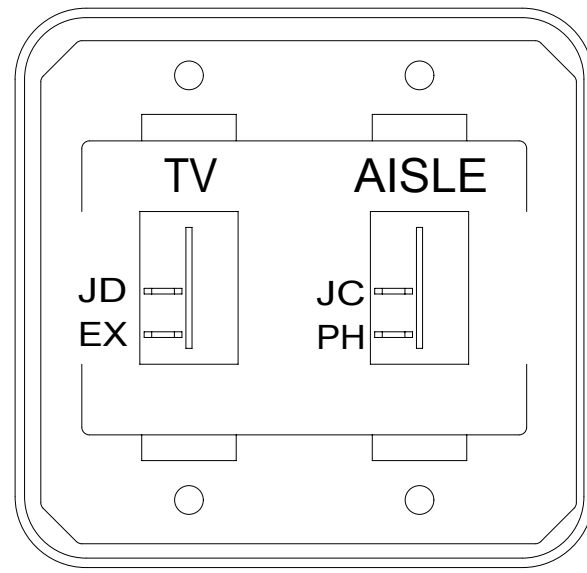
SWITCH-ROCKER  
135740-01-CHT  
SWITCH-BASE  
135741-01-CHT  
SWITCH-BEZEL  
135742-59-CHT  
SCREW  
G11-08-08U (2)

DETAIL DN



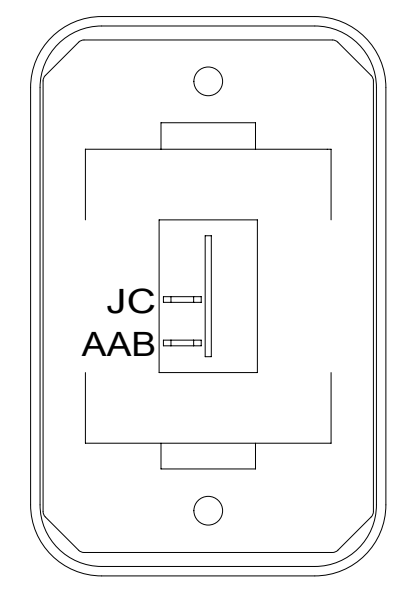
SWITCH-ROCKER  
135740-01-CHT  
SWITCH-BASE  
135741-03-CHT  
SWITCH-BEZEL  
135742-02-CHT  
SCREW  
G11-06-16U (4)

DETAIL DR 316



SWITCH-ROCKER  
135740-01-CHT (2)  
SWITCH-BASE  
135741-02-CHT  
SWITCH-BEZEL  
135742-44-CHT  
SCREW  
G11-06-16U (4)

DETAIL DD

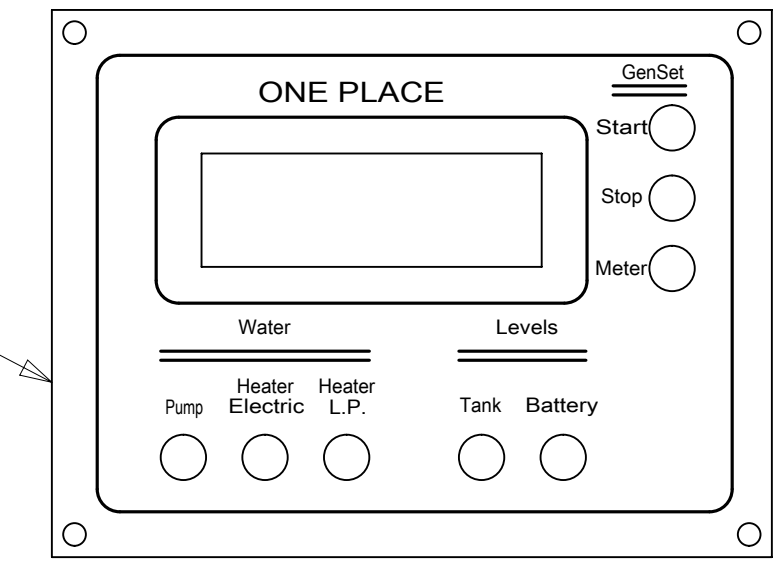


SWITCH-ROCKER  
135740-01-CHT  
SWITCH-BASE  
135741-01-CHT  
SWITCH-BEZEL  
135742-01-CHT  
SCREW  
G11-08-08U (2)

DETAIL DT

321 OR 52G PANEL-MONITOR  
175724-01-000  
323 OR 33F 175724-02-000  
SCREW  
G11-08-08U (4)

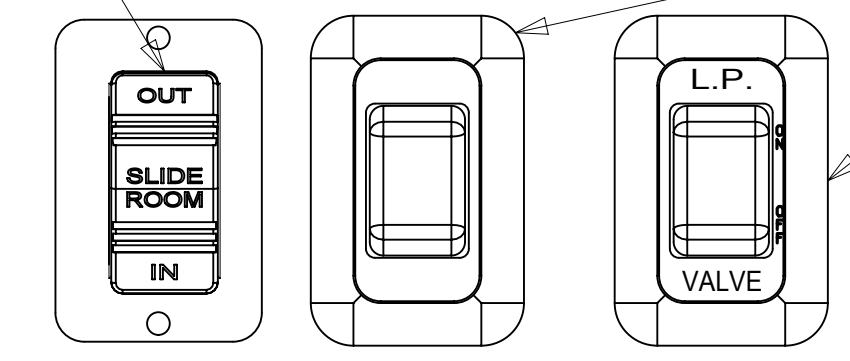
282 CONTROL-CHARGE,  
SOLAR 30 AMP  
191278-01-000  
SCREW  
G11-08-08U (2)  
DETAIL EB



DETAIL DG

SWITCH-ROCKER  
108357-07-000  
ACTUATOR-SWITCH  
108356-24-CHT  
PLATE-SWITCH  
144363-02-CHT  
SCREW  
G11-08-10U (2)  
(CIRCUITS DR,DT,DU)  
RELAY  
63912-02-000

HOLDING TANK HEATER  
TURN OFF When Not In Use  
SEE OPERATORS MANUAL

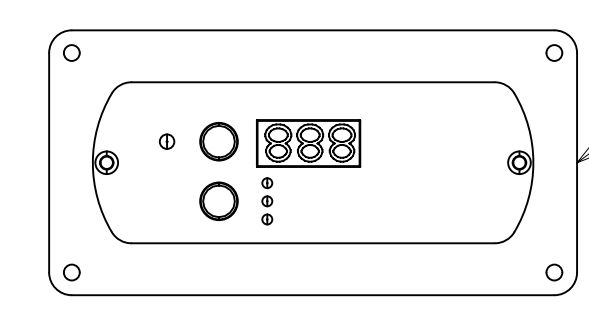


SWITCH  
DETAIL DE

SWITCH  
DETAIL DN

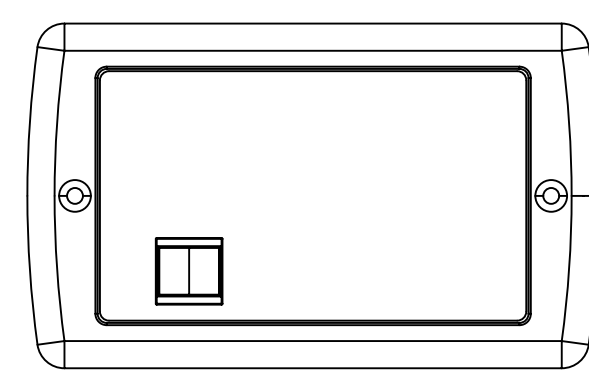
166549-01-000 LABEL-WARNING,SLIDEOUT

WARNING CRUSH HAZARD: Keep people and objects clear of the inside and the outside of the slideout room when operating. Failure to comply could result in death or serious injury.



REMOTE PANEL-INVERTER  
(SUPPLIED WITH INVERTER)  
MODULE-12V DISC  
173355-01-000

401



CONTROL-GENERATOR  
(REFERENCE)

1 33F

FOR ELECTRICAL  
TORQUE  
SPECIFICATIONS  
SEE DWG NO.  
128783-01-000

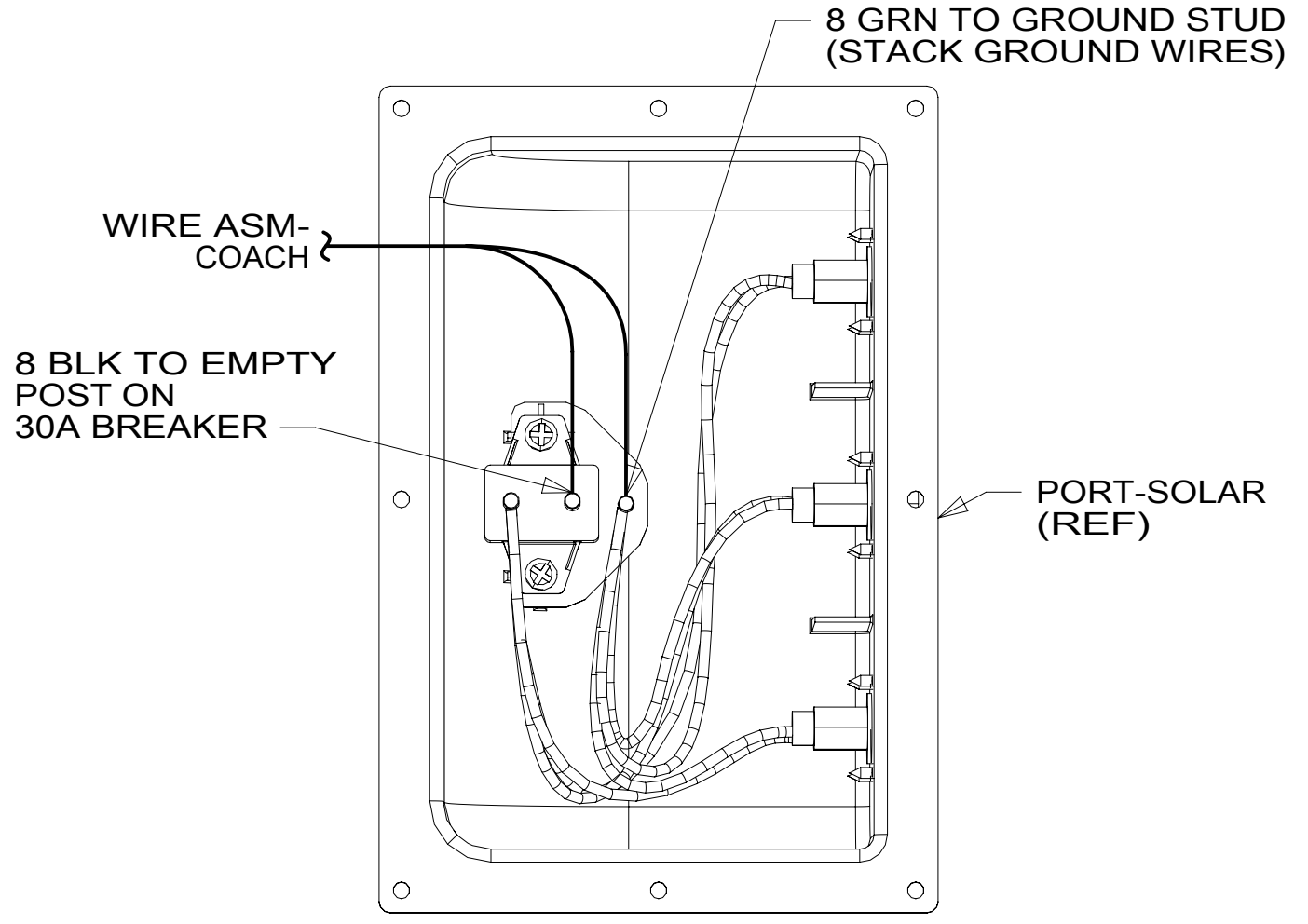
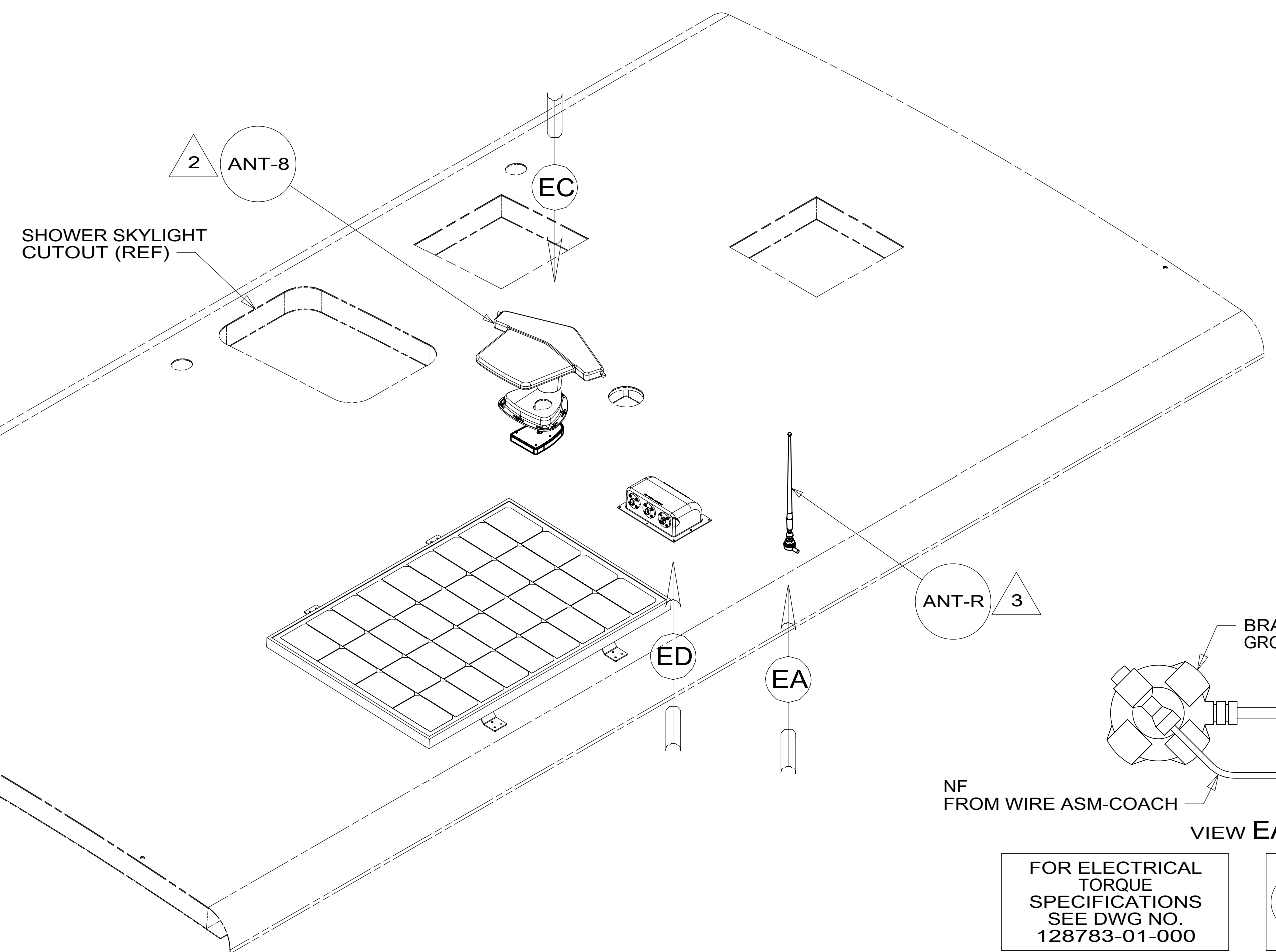
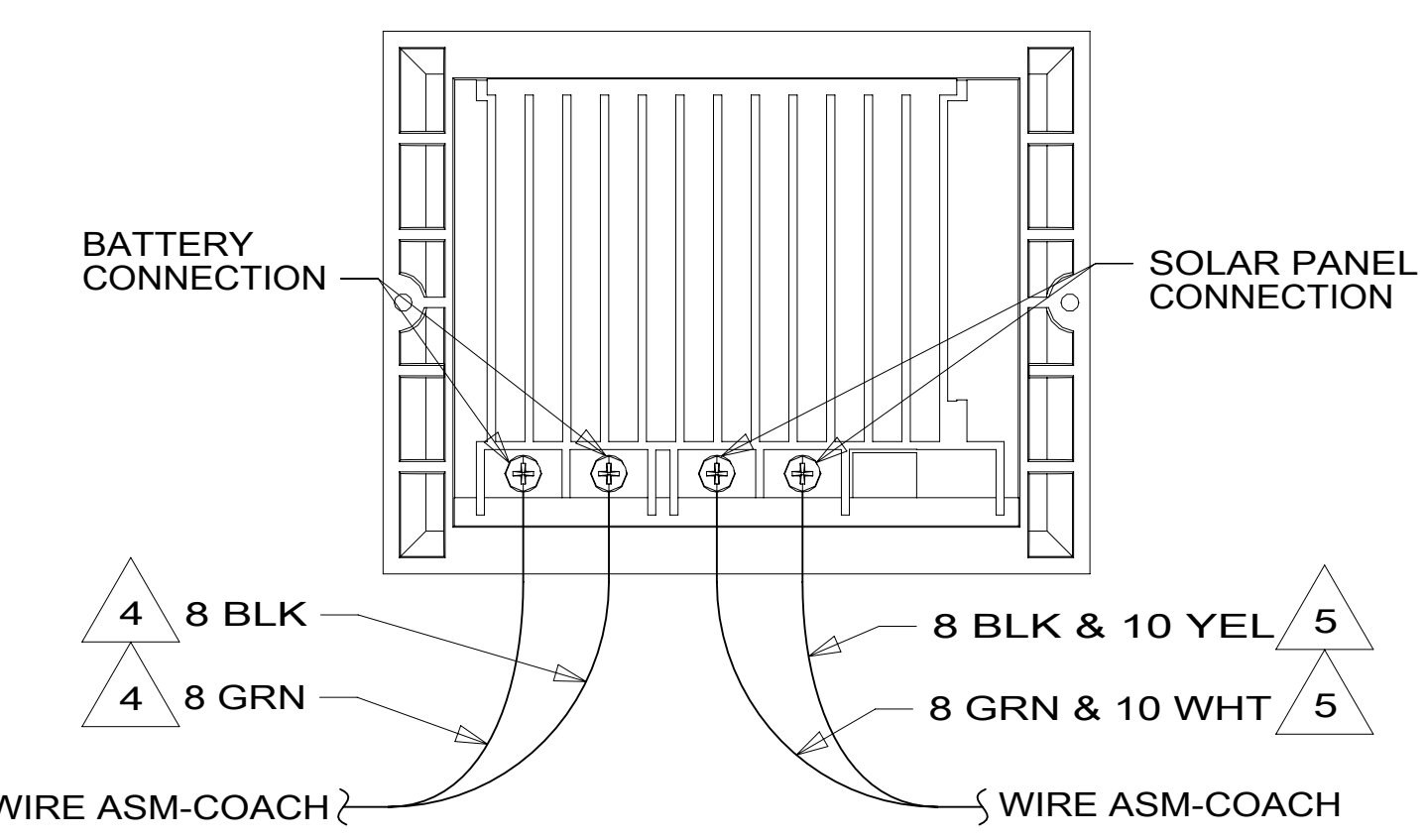
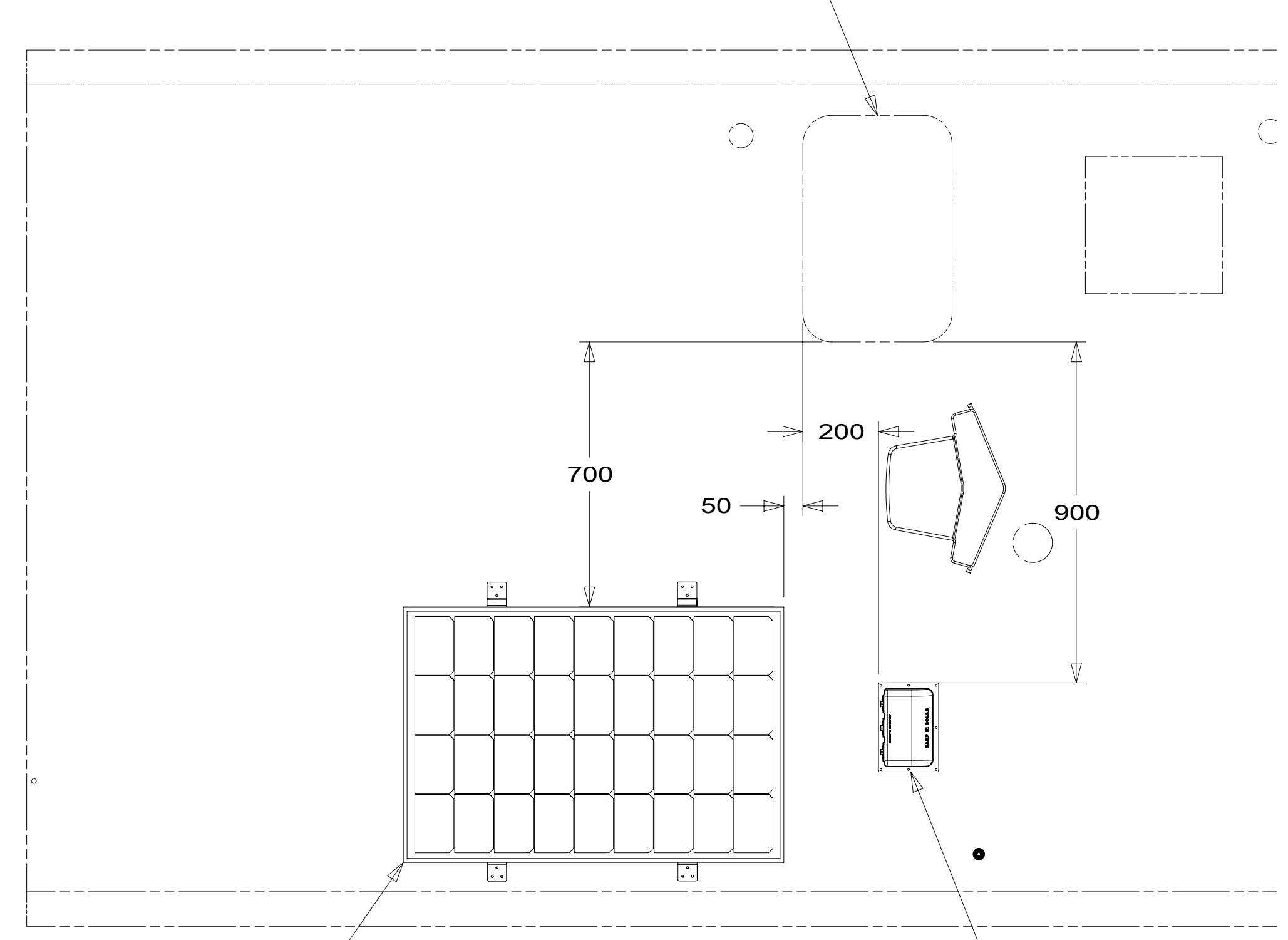
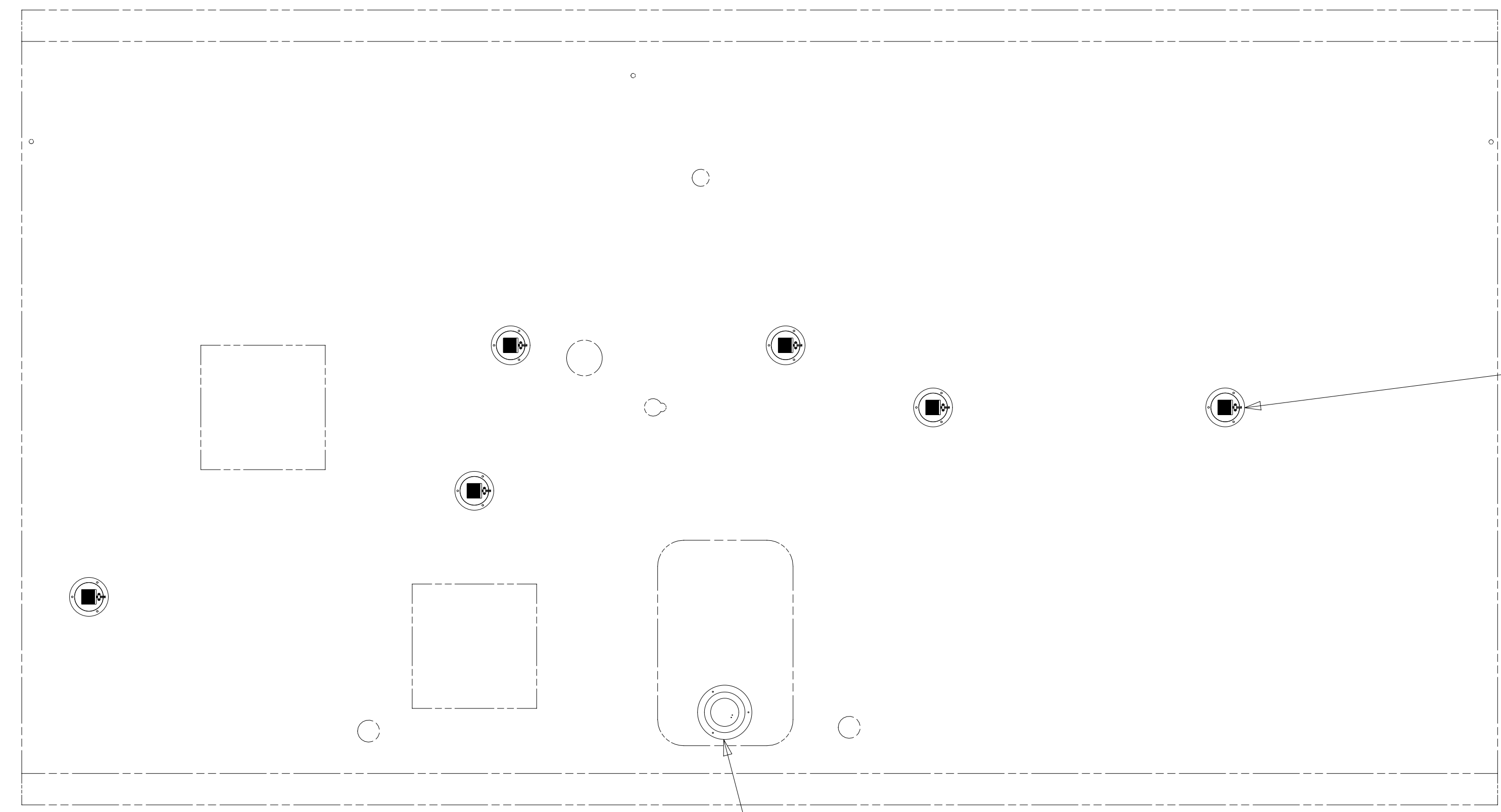
FOR ELECTRICAL  
CALLOUTS  
SEE DWG NO.  
121339-01-000

- 282 SOLAR PANEL - 100 WATT
- 401 INVERTER-DC/AC, 1000 WATT
- 316 SKYLIGHT/ROOF VENT, POWER
- 41M VENT-POWER VENTILATOR
- 321 GENERATOR PREP KIT
- 52G GEN-3.6KW ONAN LP MICROQUIET
- 323 GENERATOR PREP KIT - DIESEL
- 33F GEN-3.2 KW ONAN DIESEL
- 1JD DRAINAGE SYSTEM-HEATED-W/O
- 23R DRAINAGE SYSTEM/HEAT-PREWIRE
- 23T DRAINAGE SYSTEM-HEATED
- 265 CODES/STANDARDS-CSA/CMVSS
- 1B1 CODES/STANDARDS USA

1B1	265
FIRST USED	
<b>15 524V</b>	
<b>DO NOT SCALE DRAWING</b>	
<b>TITLE: WIRING INSTL-BODY, 12V</b>	
SHEET 4	PART NO 188989 REV
1 21-Aug-2015	

NOTES:  
1 SUPPLIED WITH GENERATOR.

\* 188989 A \*



- NOTES:
- 5 WIRE IS MARKED WITH YELLOW TAPE.
  - 4 WIRE IS MARKED WITH GOLD TAPE.
  - 3 REMOVE GROUND WIRE FROM ANTENNA BASE.
  - 2 SEE ANTENNA INSTALLATION MANUAL FOR CORRECT INSTALLATION PROCEDURE.
  - 1 WRAP BRACKET LEGS AROUND ANTENNA BASE.

FOR ELECTRICAL TORQUE SPECIFICATIONS SEE DWG NO. 128783-01-000

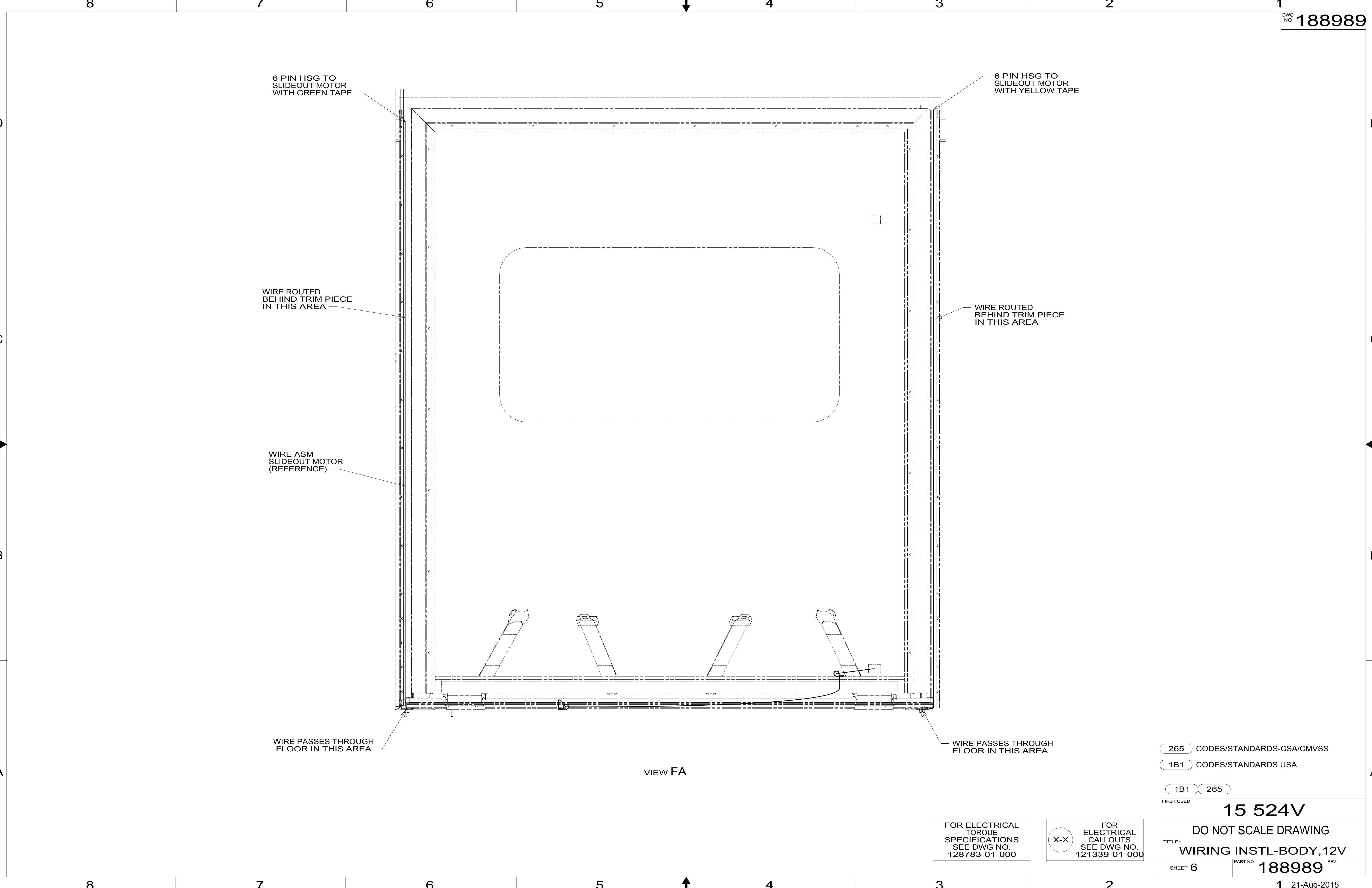
X-X

FOR ELECTRICAL CALLOUTS SEE DWG NO. 121339-01-000

- 282 SOLAR PANEL - 100 WATT
- 265 CODES/STANDARDS-CSA/CMVSS
- 1B1 CODES/STANDARDS USA

FIRST USED	
<b>15 524V</b>	
DO NOT SCALE DRAWING	
TITLE: <b>WIRING INSTL-BODY, 12V</b>	
SHEET 5	PART NO <b>188989</b> REV
1 21-Aug-2015	

\* 188989 A \*



6 PIN HSG TO SLIDEOUT MOTOR WITH GREEN TAPE

6 PIN HSG TO SLIDEOUT MOTOR WITH YELLOW TAPE

WIRE ROUTED BEHIND TRIM PIECE IN THIS AREA

WIRE ROUTED BEHIND TRIM PIECE IN THIS AREA

WIRE ASM-SLIDEOUT MOTOR (REFERENCE)

WIRE PASSES THROUGH FLOOR IN THIS AREA

WIRE PASSES THROUGH FLOOR IN THIS AREA

VIEW FA

265 CODES/STANDARDS-CSA/CMVSS

1B1 CODES/STANDARDS USA

1B1 265

FIRST USED 15 524V

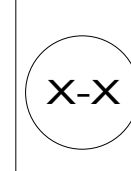
DO NOT SCALE DRAWING

TITLE: WIRING INSTL-BODY, 12V

SHEET 6 PART NO 188989 REV

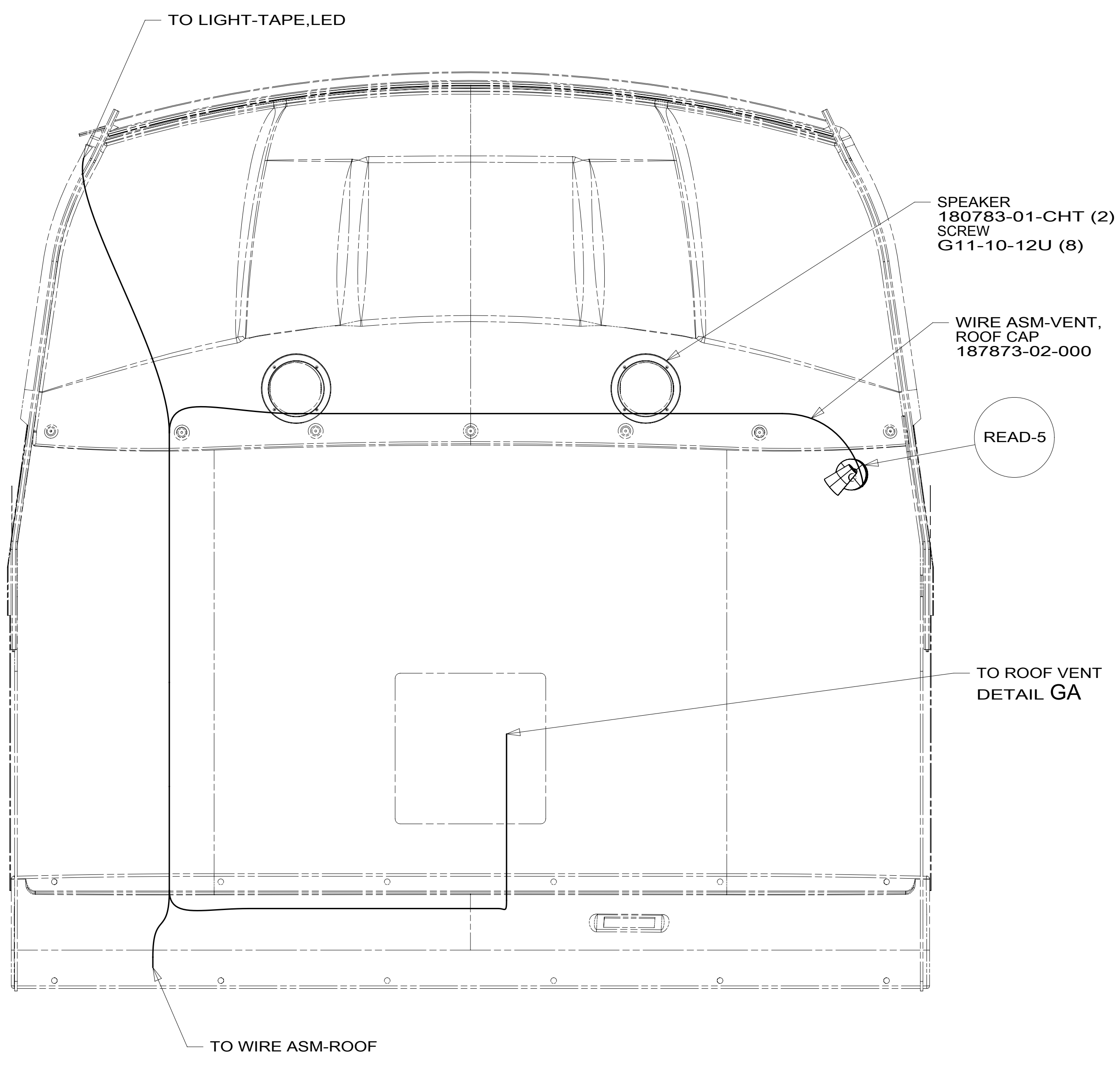
FOR ELECTRICAL TORQUE SPECIFICATIONS SEE DWG NO. 128783-01-000

FOR ELECTRICAL CALLOUTS SEE DWG NO. 121339-01-000

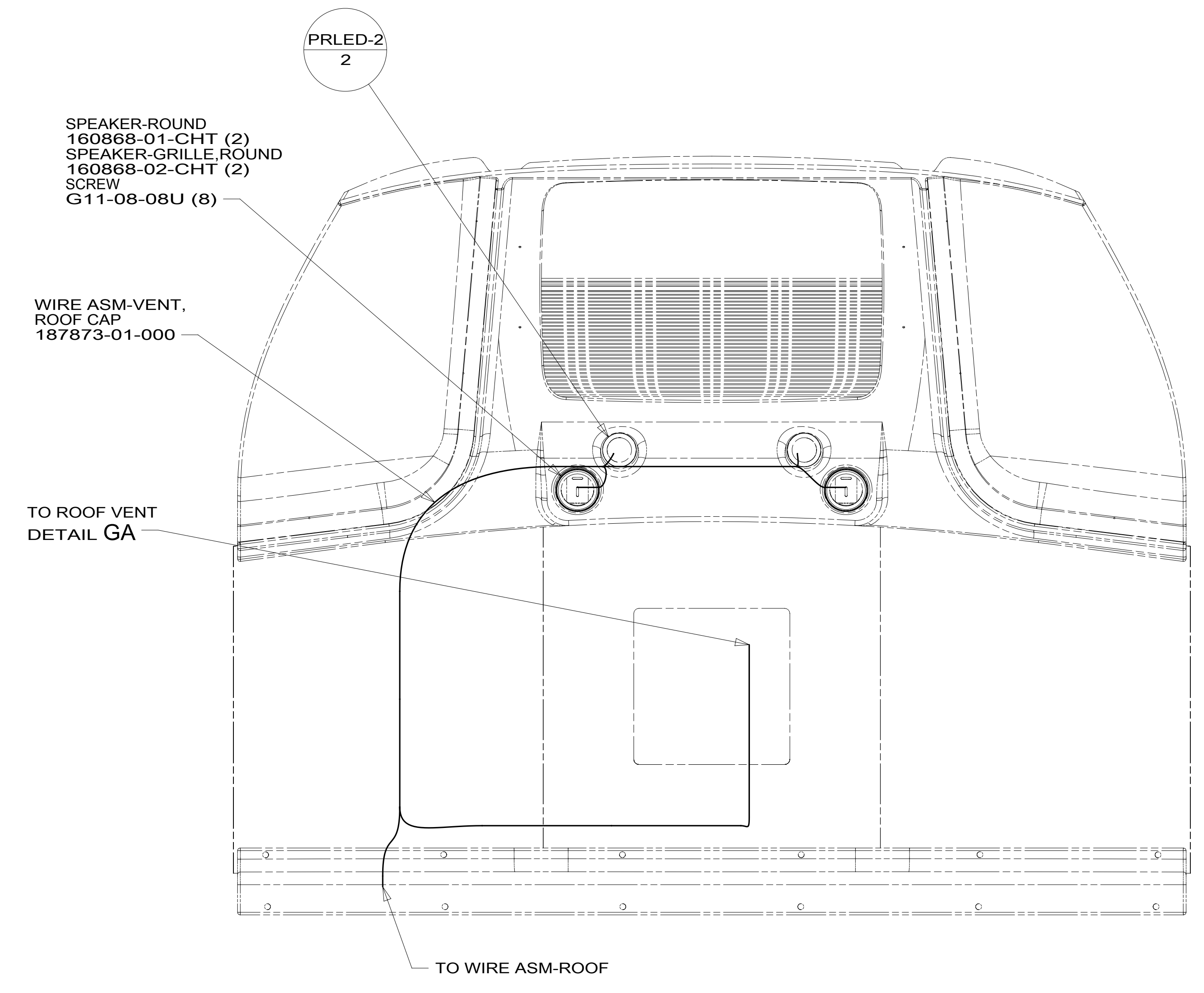


A \* 188989

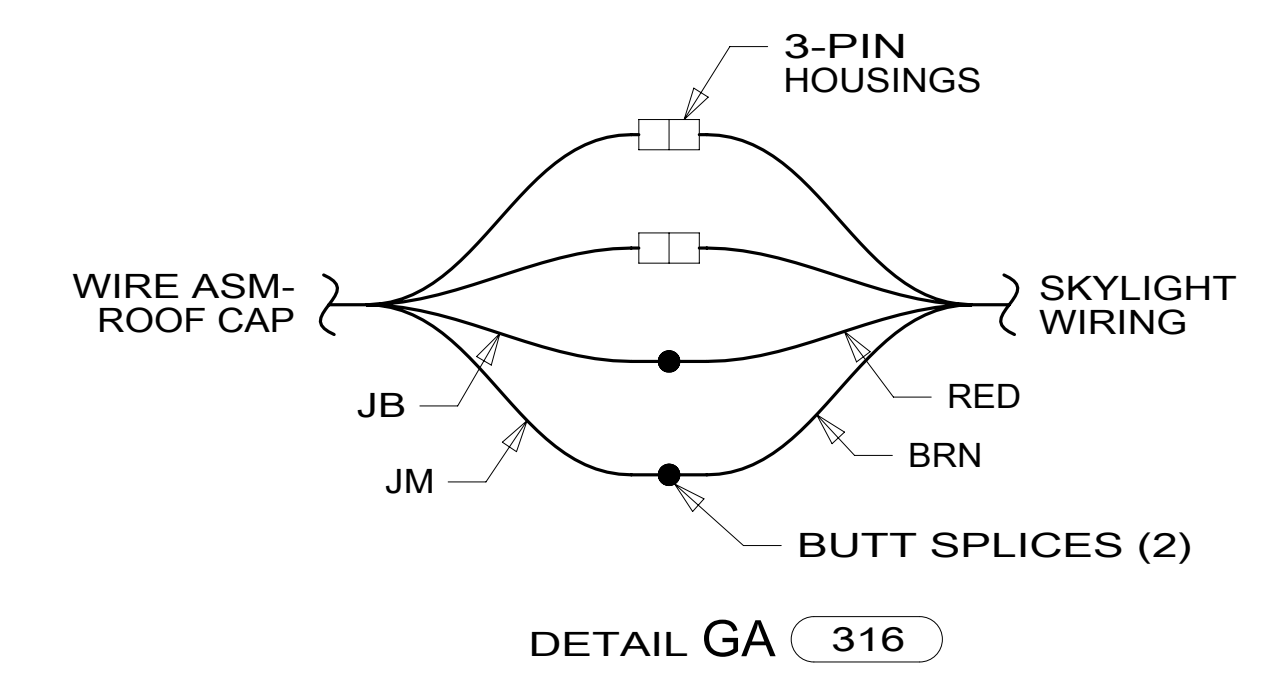
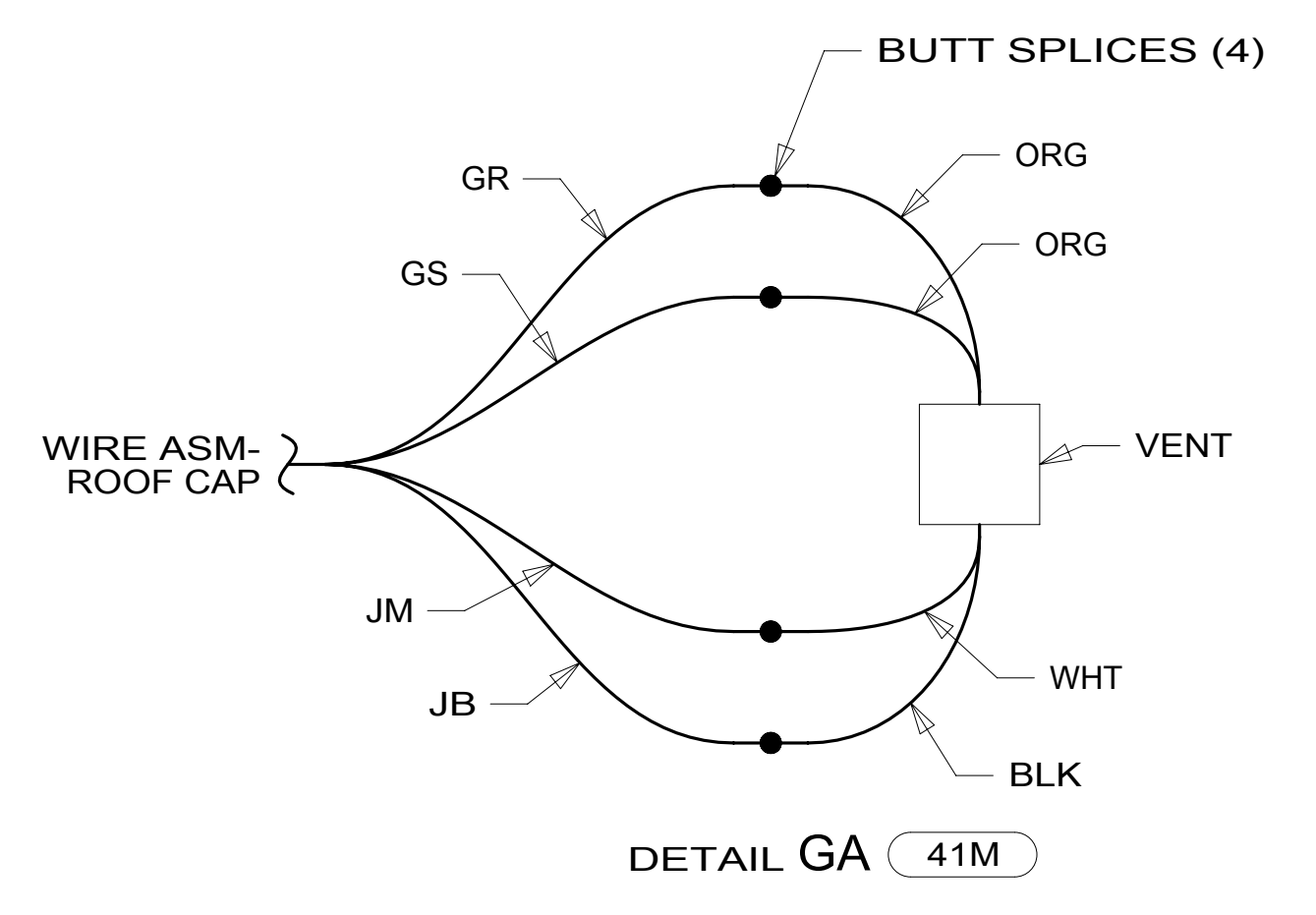




31T



31P



- 41M VENT-POWER VENTILATOR
- 316 SKYLIGHT/ROOF VENT, POWER
- 31T FRONT CAP W/BED
- 31P FRONT CAP W/O BED
- 265 CODES/STANDARDS-CSA/CMVSS
- 1B1 CODES/STANDARDS USA

1B1 265

FIRST USED		<b>15 524V</b>	
<b>DO NOT SCALE DRAWING</b>			
<b>TITLE: WIRING INSTL-BODY, 12V</b>			
SHEET 7	PART NO	188989	REV

FOR ELECTRICAL TORQUE SPECIFICATIONS SEE DWG NO. 128783-01-000

X-X FOR ELECTRICAL CALLOUTS SEE DWG NO. 121339-01-000

\* 188989 A \*