



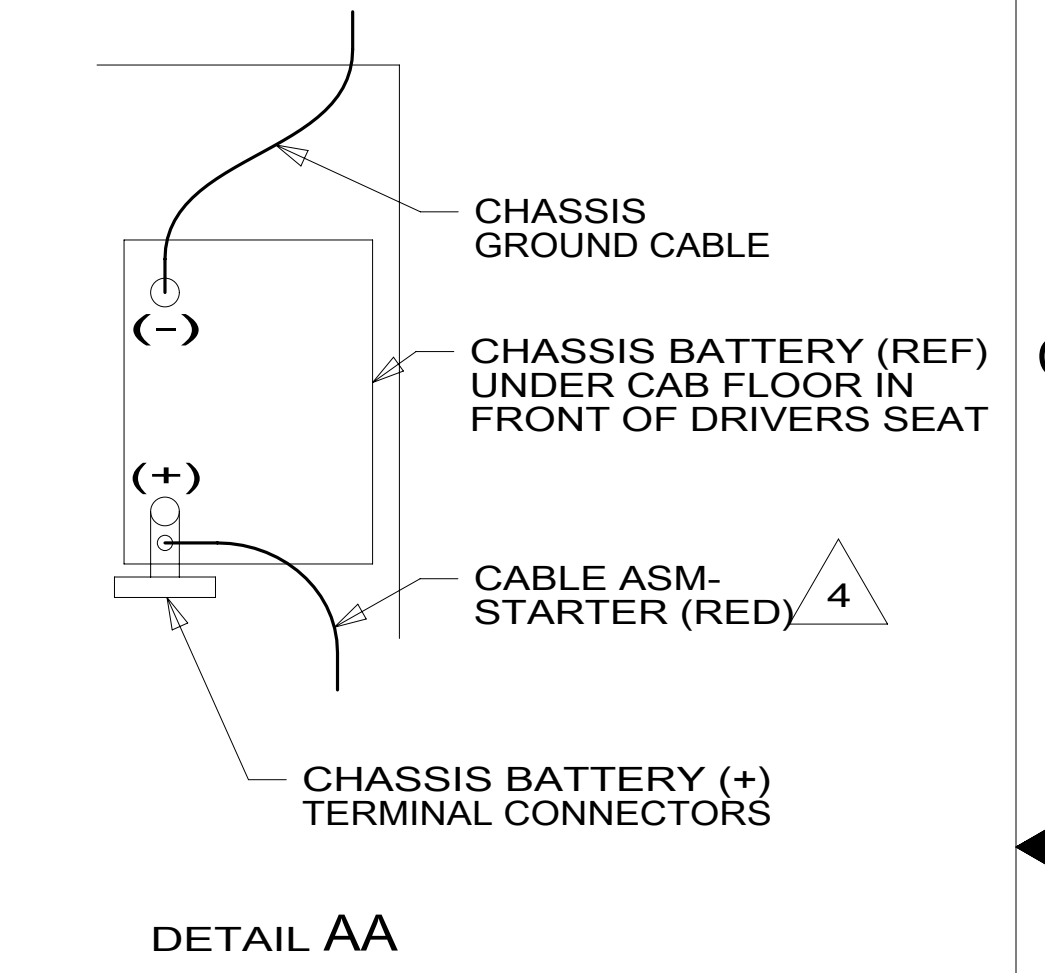
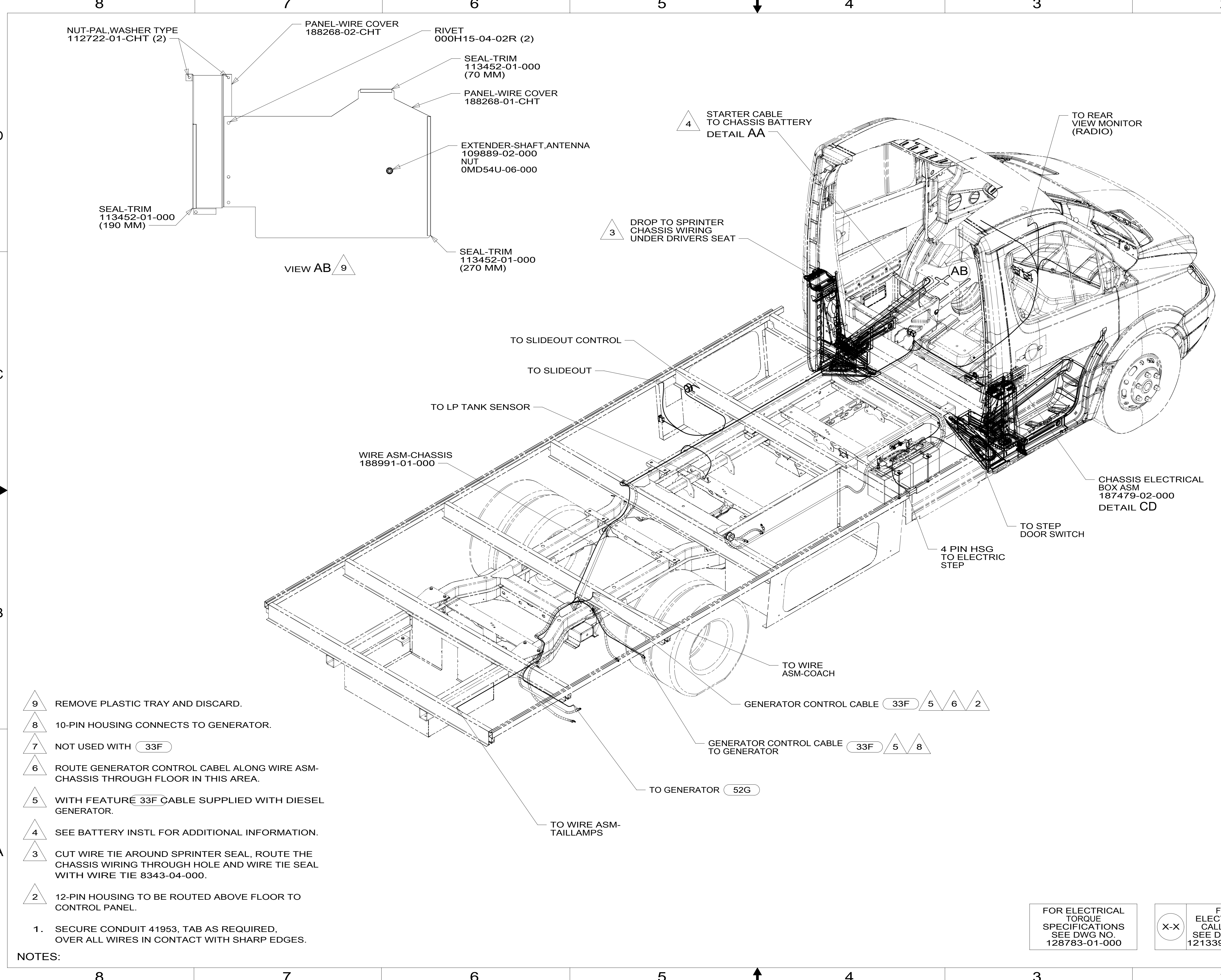
DANGER

Danger of electrical shock, burns or death. Always remove all power sources before attempting any repair, service or diagnostic work. Power can be present from shore power, generator, inverter or battery. All power sources must be disabled and secured before performing any service.



CAUTION

If you lack the skills, tools or equipment to perform diagnostic or repair work leave such work to an authorized Winnebago Industries dealer or other qualified shop.



- NOTES:
- 9 REMOVE PLASTIC TRAY AND DISCARD.
 - 8 10-PIN HOUSING CONNECTS TO GENERATOR.
 - 7 NOT USED WITH 33F
 - 6 ROUTE GENERATOR CONTROL CABEL ALONG WIRE ASM-CHASSIS THROUGH FLOOR IN THIS AREA.
 - 5 WITH FEATURE 33F CABLE SUPPLIED WITH DIESEL GENERATOR.
 - 4 SEE BATTERY INSTL FOR ADDITIONAL INFORMATION.
 - 3 CUT WIRE TIE AROUND SPRINTER SEAL, ROUTE THE CHASSIS WIRING THROUGH HOLE AND WIRE TIE SEAL WITH WIRE TIE 8343-04-000.
 - 2 12-PIN HOUSING TO BE ROUTED ABOVE FLOOR TO CONTROL PANEL.
1. SECURE CONDUIT 41953, TAB AS REQUIRED, OVER ALL WIRES IN CONTACT WITH SHARP EDGES.

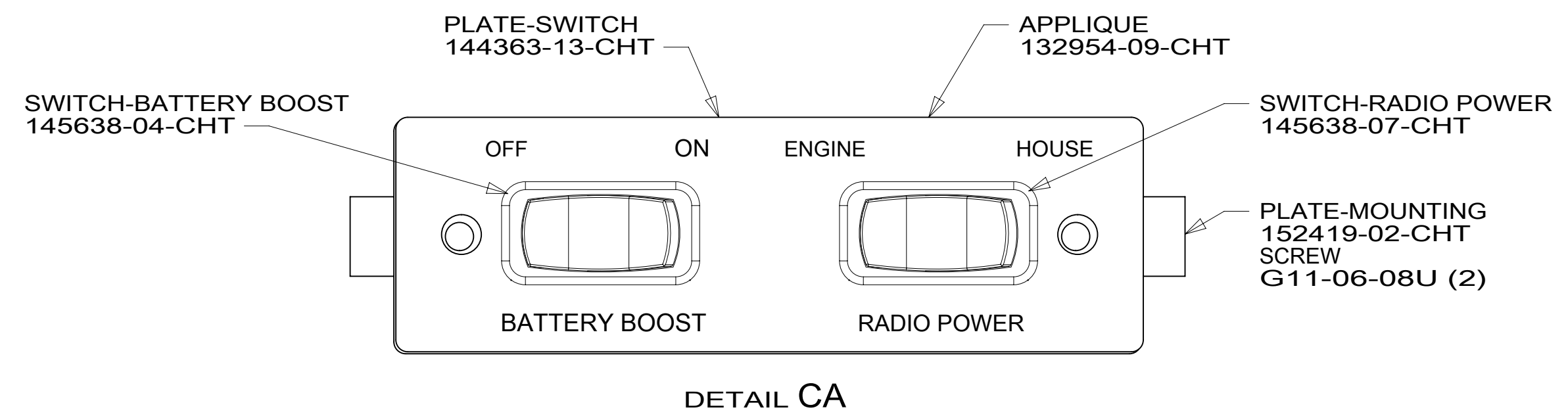
- 52G GEN-3.6KW ONAN LP MICROQUIET
 - 33F GEN-3.5 KW ONAN DIESEL
 - 1MD MERCEDES-11,030# GVWR,DIESEL
 - 265 CODES/STANDARDS-CSA/CMVSS
 - 1B1 CODES/STANDARDS USA
- 1B1 265 1MD

		COPYRIGHT 2014 WINNEBAGO INDUSTRIES, INC.	
DFTR	ORIG. DATE	ALL DIMENSIONS ARE IN MILLIMETERS	
CHKR		FIRST USED	
P.E.		15 524V	
M.E.		UNSPECIFIED TOLERANCES ARE:	
DSNR		WHOLE DIM (X) : 3 ONE-PLACE (X.X) : 1.5 TWO-PLACE (X.XX) : 0.50 ANGLE : 1°	
DO NOT SCALE DRAWING		REFER TO ES0018 FOR FASTENER TIGHTENING GUIDELINES	
TITLE: WIRING INSTL-CHASSIS			
SHEET 1 OF 3	PART NO 188988	REV	
REF:	1	10-Nov-2014	

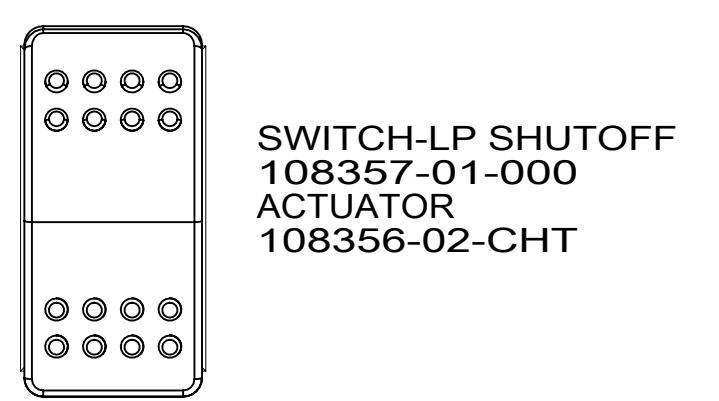
FOR ELECTRICAL TORQUE SPECIFICATIONS SEE DWG NO. 128783-01-000

X-X FOR ELECTRICAL CALLOUTS SEE DWG NO. 121339-01-000

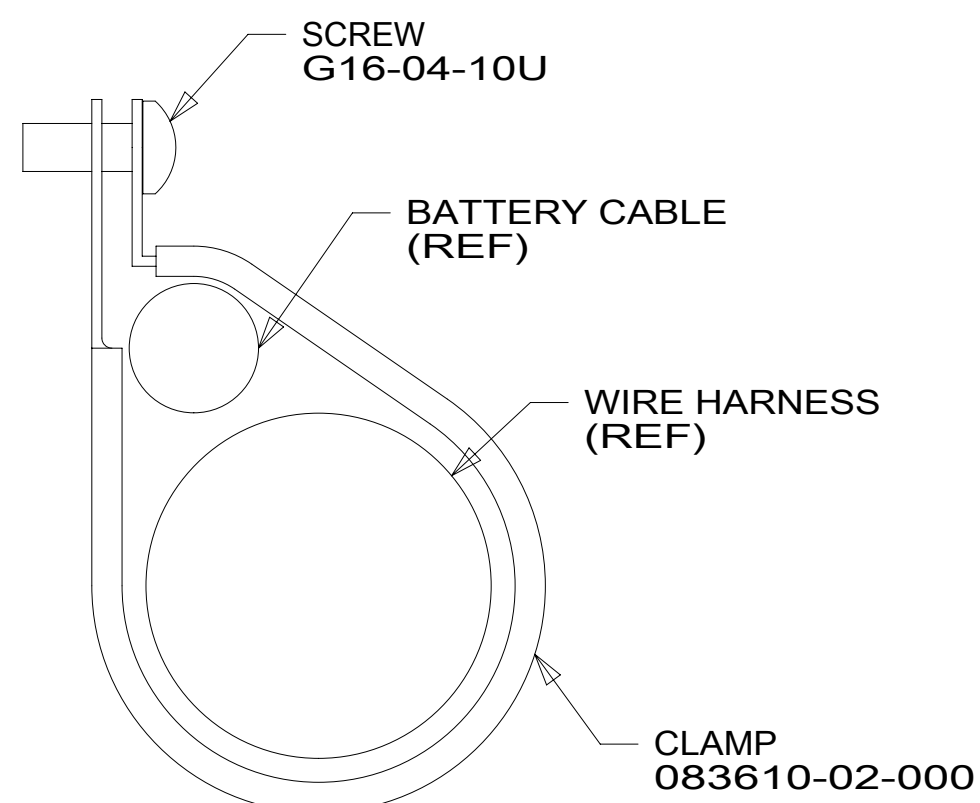
*188988



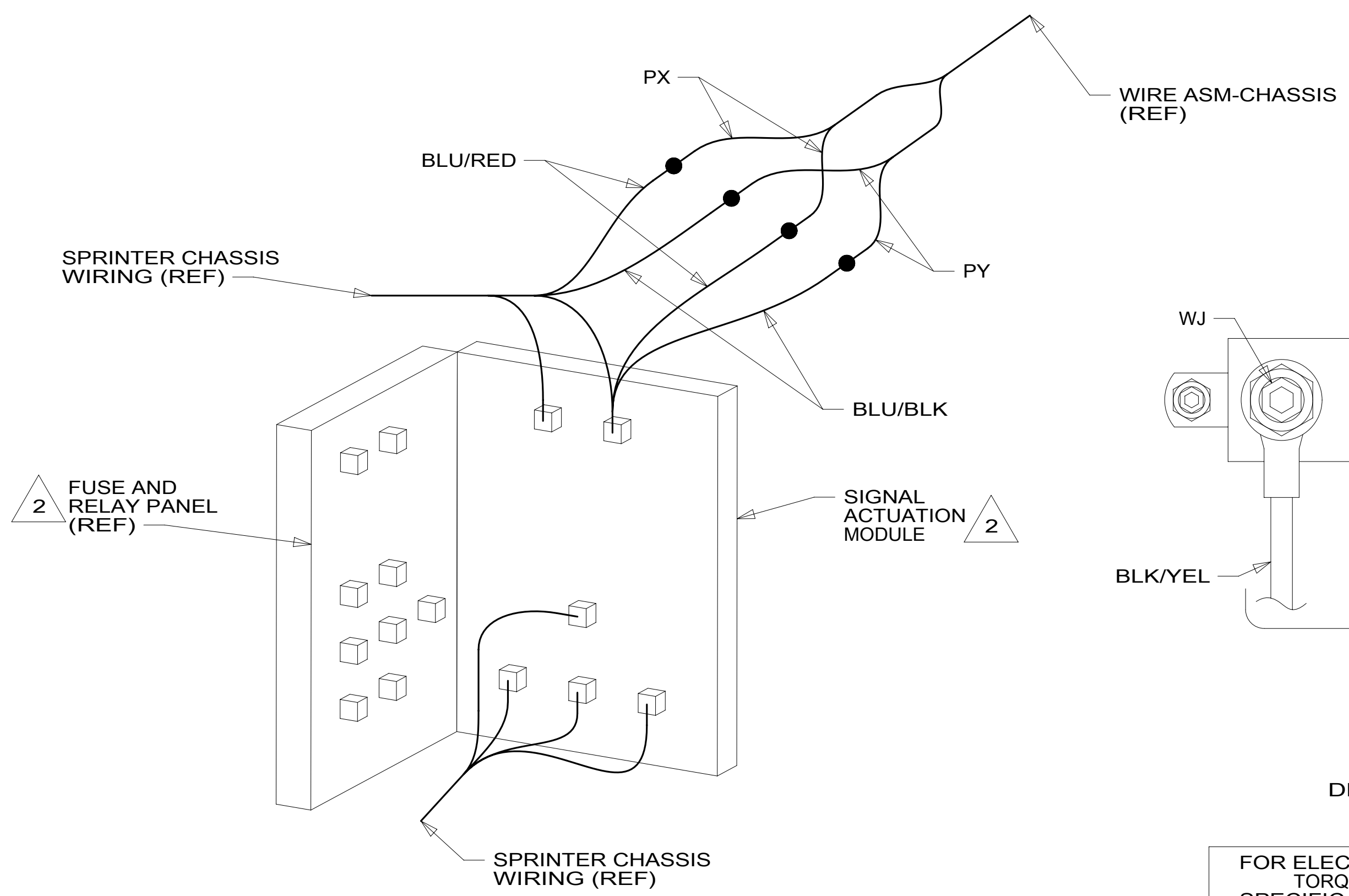
DETAIL CA



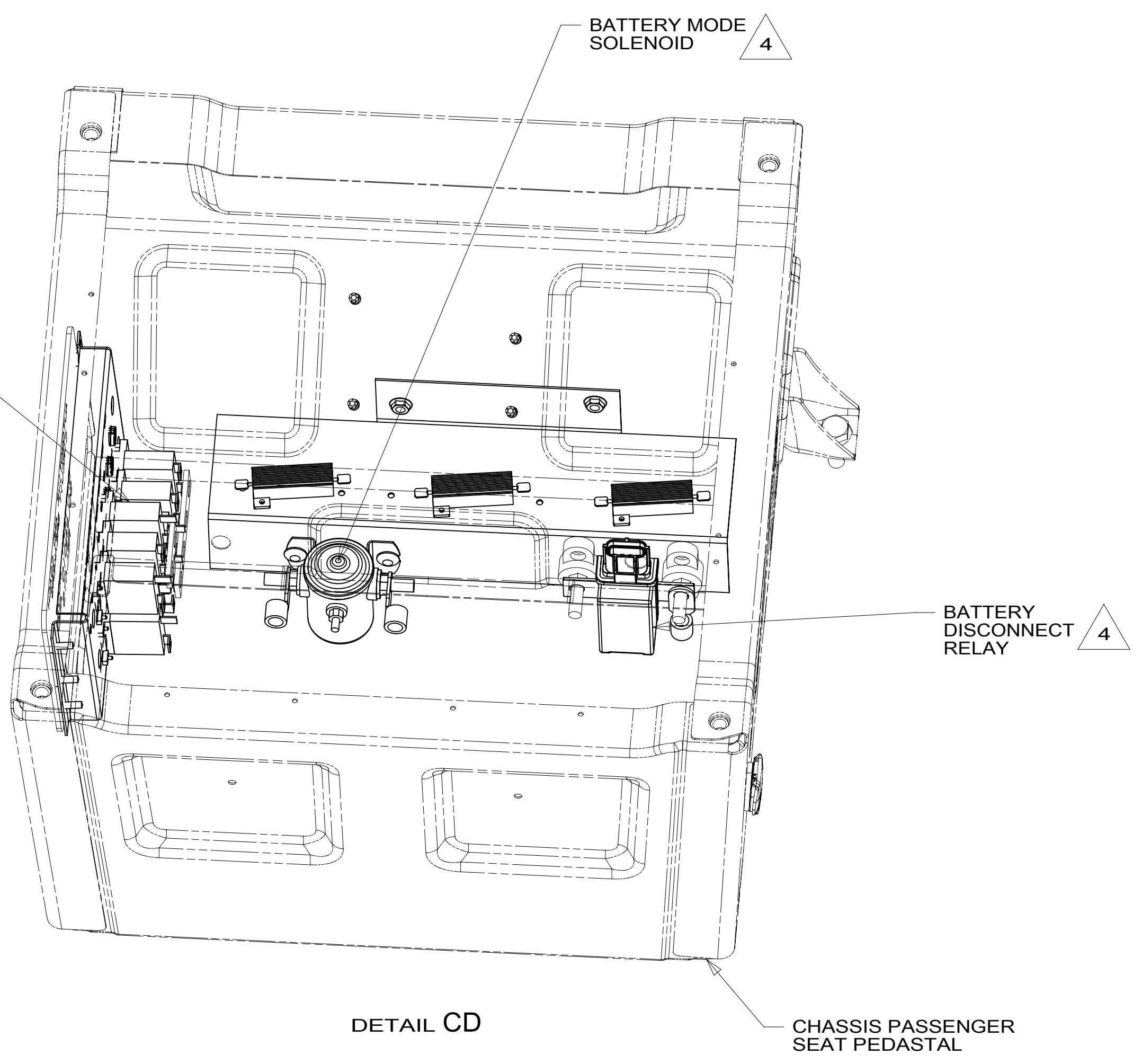
DETAIL CF



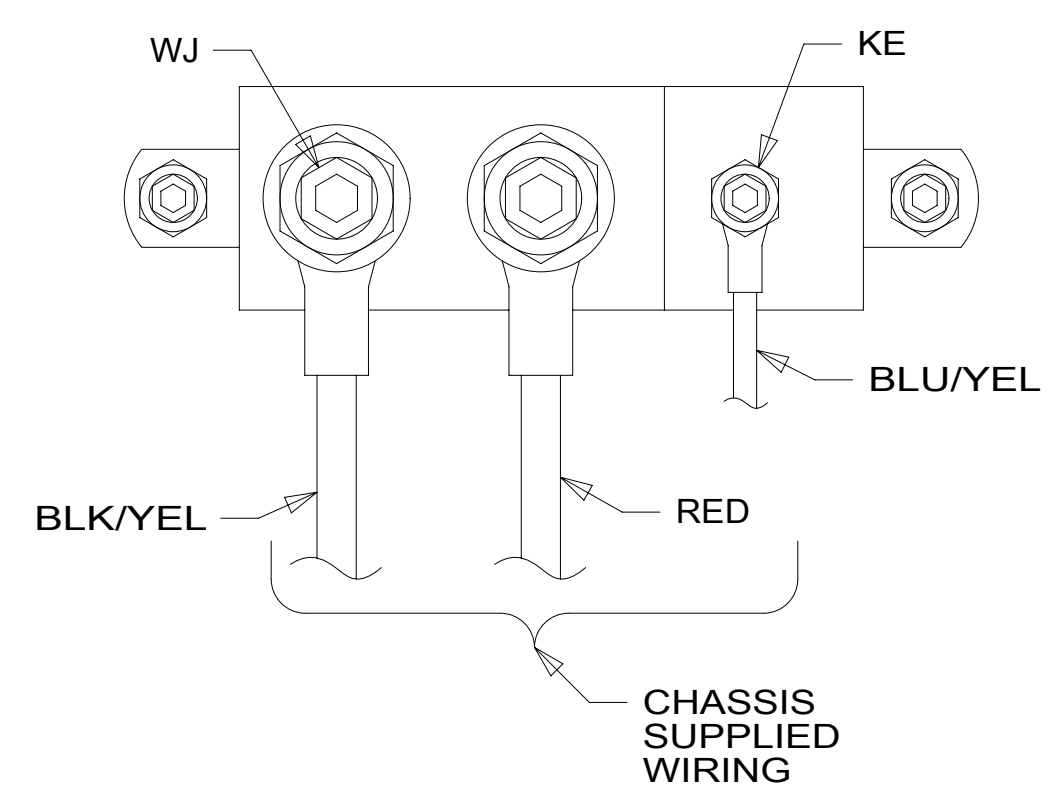
DETAIL CE (4 PLACES)



VIEW CB



DETAIL CD



DETAIL CC

- NOTES:
- 4 SEE CHASSIS ELECTRICAL BOX ASM FOR ADDITIONAL INFORMATION.
 - 3 CONNECTION POINT IS LOCATED UNDER DRIVERS SEAT.
 - 2 LOCATED IN DRIVERS SIDE KICKER PANEL.
 - 1. SECURE CONDUIT 41953, TAB AS REQUIRED, OVER ALL WIRES IN CONTACT WITH SHARP EDGES.

FOR ELECTRICAL TORQUE SPECIFICATIONS SEE DWG NO. 128783-01-000

FOR ELECTRICAL CALLOUTS SEE DWG NO. 121339-01-000

- 1MD MERCEDES-11,030# GVWR,DIESEL
- 265 CODES/STANDARDS-CSA/CMVSS
- 1B1 CODES/STANDARDS USA

1B1	265	1MD
FIRST USED		
15 524V		
DO NOT SCALE DRAWING		
TITLE: WIRING INSTL-CHASSIS		
SHEET 3	PART NO 188988	REV
10-Nov-2014		

* 188988 A *