



DANGER

Danger of electrical shock, burns or death. Always remove all power sources before attempting any repair, service or diagnostic work. Power can be present from shore power, generator, inverter or battery. All power sources must be disabled and secured before performing any service.



CAUTION

If you lack the skills, tools or equipment to perform diagnostic or repair work leave such work to an authorized Winnebago Industries dealer or other qualified shop.

DRAWING NO.	FEATURE
188888-12	1B1 78J
188888-16	265 78J

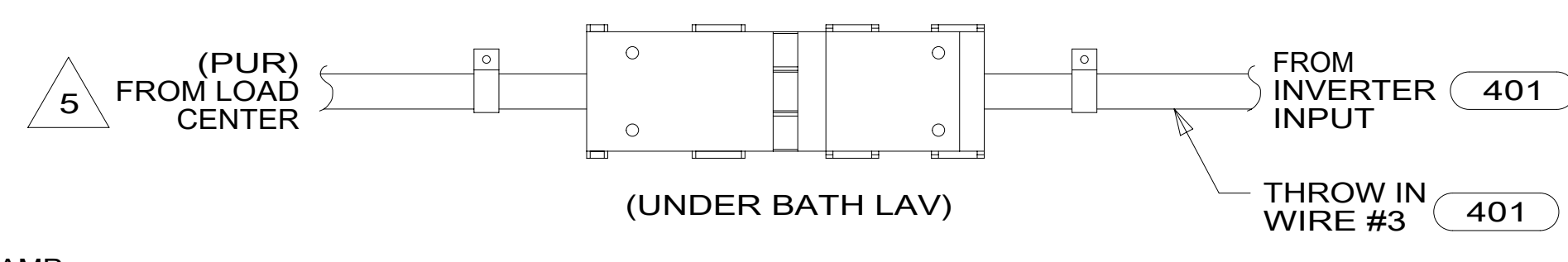
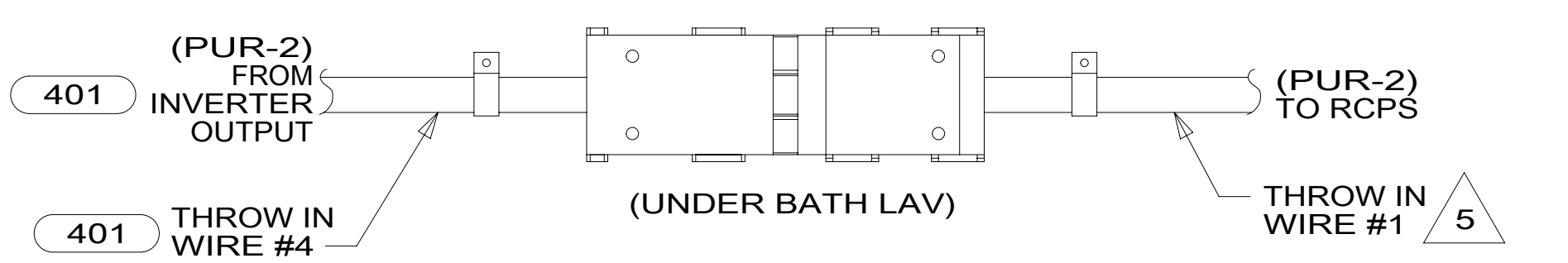
RELEASE	REV/DATE	DWG NO	188888
REV ZONE	REVISION RECORD	DATE	DFT-ORIG

D

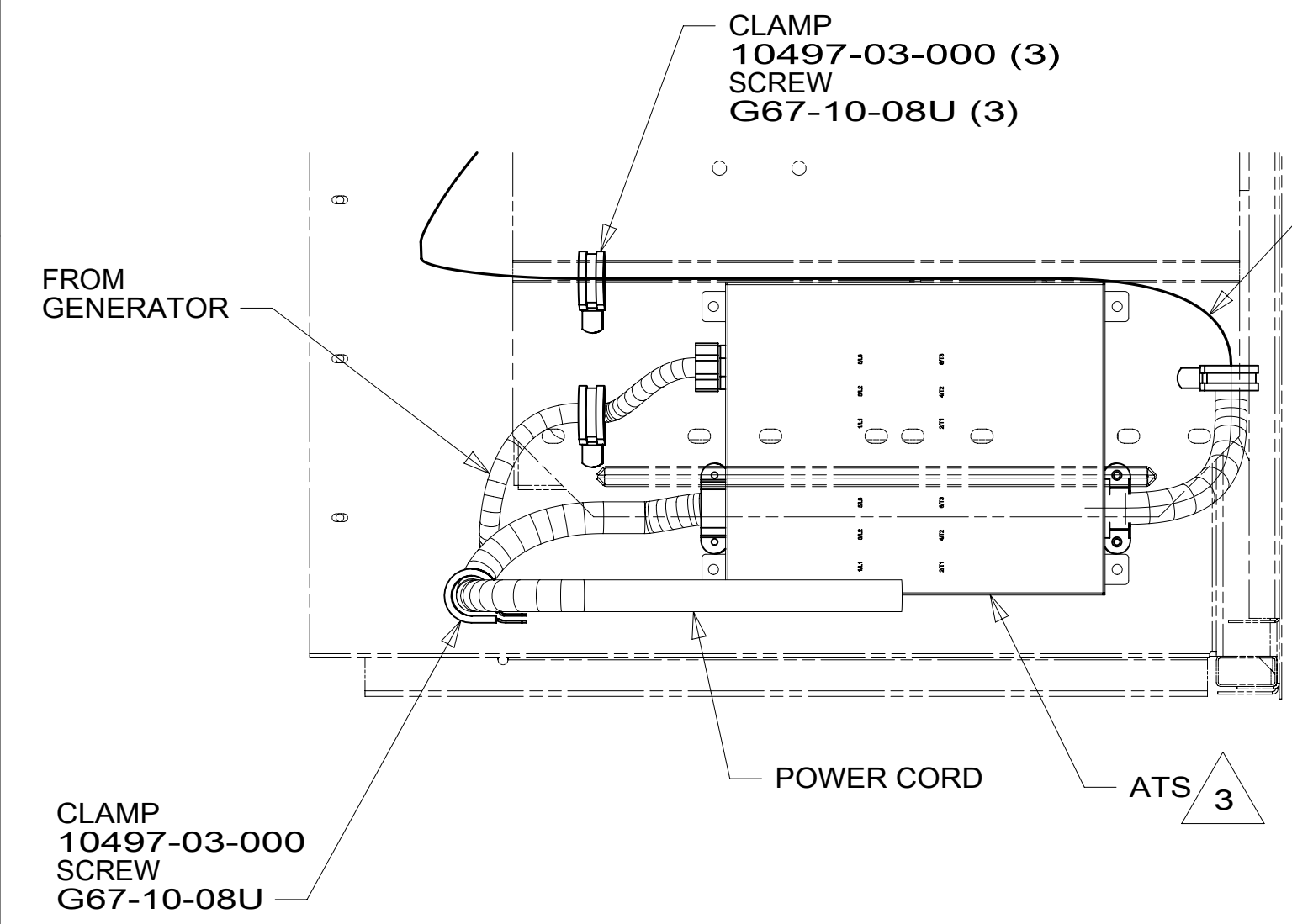
C

B

A

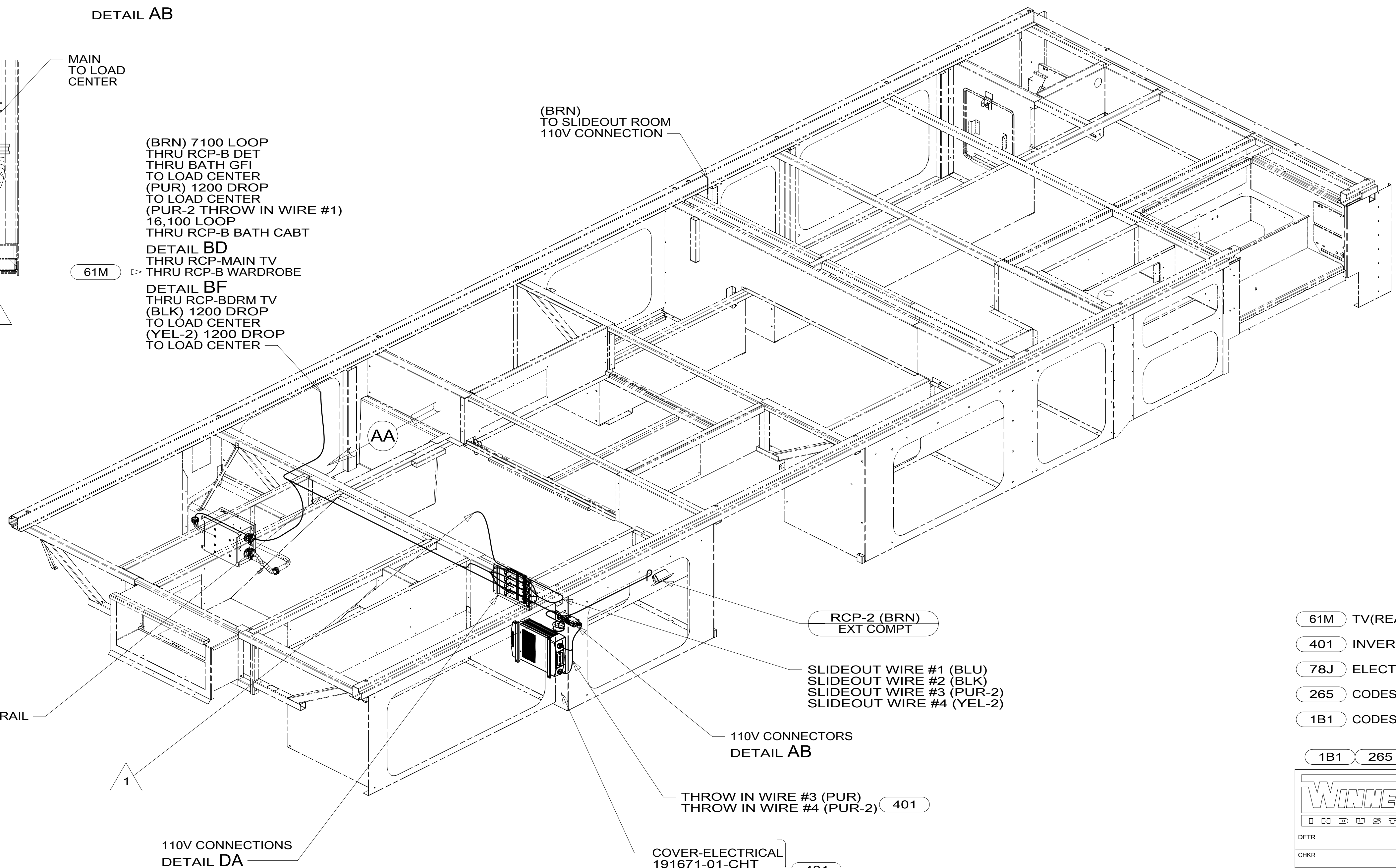


DETAIL AB



VIEW AA

- (BRN) 7100 LOOP THRU RCP-B DET THRU BATH GFI TO LOAD CENTER
- (PUR) 1200 DROP TO LOAD CENTER
- (PUR-2) THROW IN WIRE #1) 16,100 LOOP THRU RCP-B BATH CABT
- DETAIL BD THRU RCP-MAIN TV THRU RCP-B WARDROBE
- DETAIL BF THRU RCP-BDRM TV (BLK) 1200 DROP TO LOAD CENTER
- (YEL-2) 1200 DROP TO LOAD CENTER



- 61M TV(REAR)-28" COLOR STEREO
- 401 INVERTER-DC/AC, 1000 WATT
- 78J ELECTRICAL SYSTEM-50 AMP
- 265 CODES/STANDARDS-CSA/CMVSS
- 1B1 CODES/STANDARDS USA

- 1B1 265

WINNEBAGO
COPYRIGHT 2014 WINNEBAGO INDUSTRIES, INC.

DFT-ORIG	ORIG. DATE
CHKR	ALL DIMENSIONS ARE IN MILLIMETERS
P.E.	FIRST USED
M.E.	15 D30A
DSNR	MATERIAL:
UNSPECIFIED TOLERANCES ARE:	
WHOLE DIM (X)	: 3
ONE-PLACE (X.X)	: 1.5
TWO-PLACE (X.XX)	: 0.50
ANGLE	: 1'
THIRD ANGLE PROJECTION	
DO NOT SCALE DRAWING	REFER TO ES0018 FOR FASTENER TIGHTENING GUIDELINES

TITLE: WIRING INSTL-BODY, 110V	
SHEET 1 OF 5	PART NO 188888 REV

REF: 1 22-Dec-2014

- 5 WITHOUT INVERTER THROW IN #2 (PUR-2) CONNECTS TO (PUR) FROM LOAD CENTER.
- 4 WIRE IS PART OF WIRE ASM-CHASSIS.
- 3 SEE LOAD CENTER/ATS ASM FOR ADDITIONAL INFORMATION.

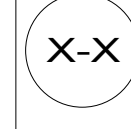
- 2. AT MINIMUM ALL WIRES TO BE SUPPORTED AND SECURED PER CODE REQUIREMENTS. USE CLAMP 10495 OR 10497 OR WIRE TIE 8343 OR 108046 AND SCREW G67-XX-XXX OR G56-XX-XXX AS APPROPRIATE FOR INSTALLATION.

- 1 WIRES PASS THROUGH FLOOR IN THIS AREA.

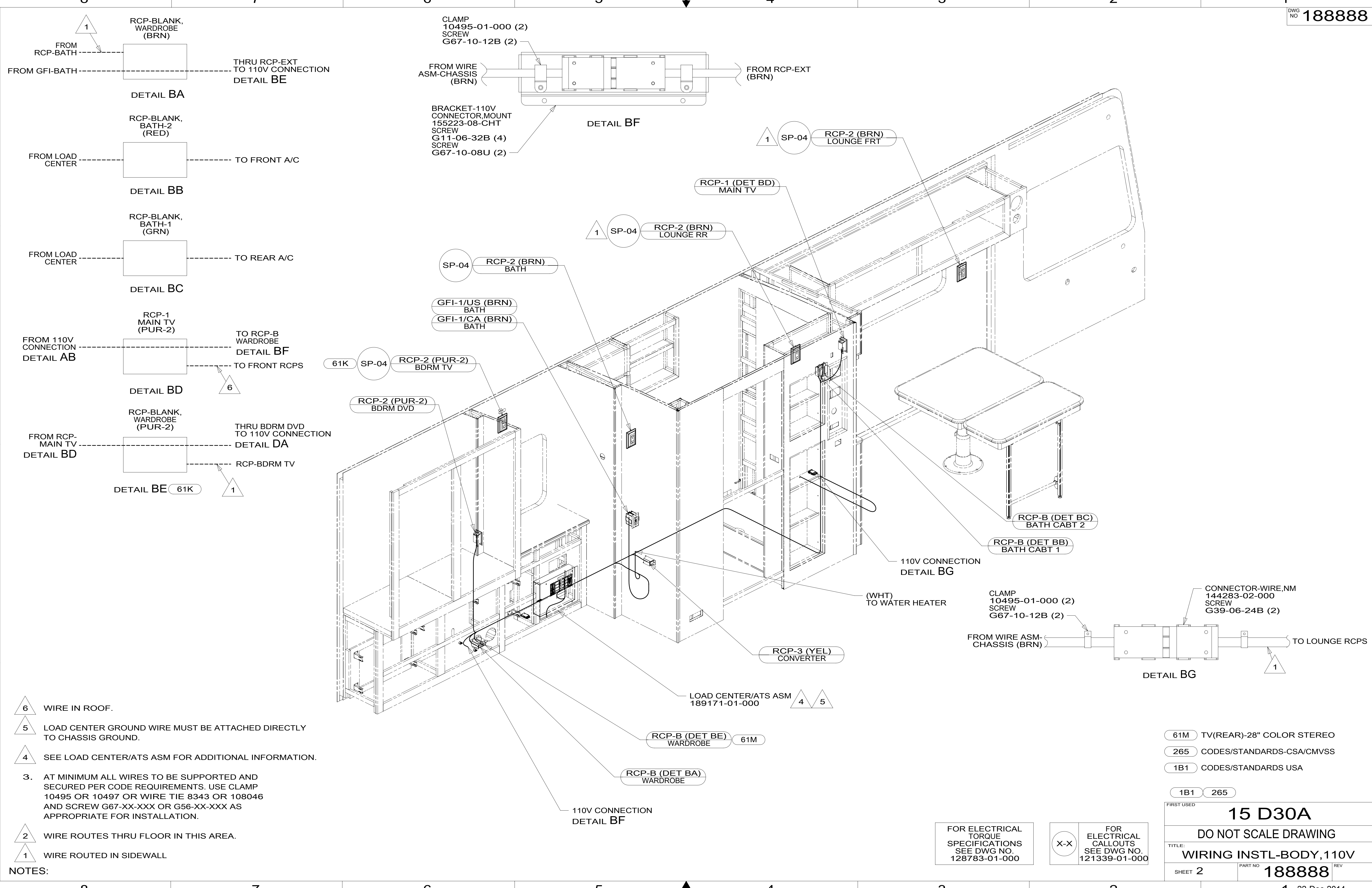
NOTES:

FOR ELECTRICAL TORQUE SPECIFICATIONS SEE DWG NO. 128783-01-000

FOR ELECTRICAL CALLOUTS SEE DWG NO. 121339-01-000



* 188888



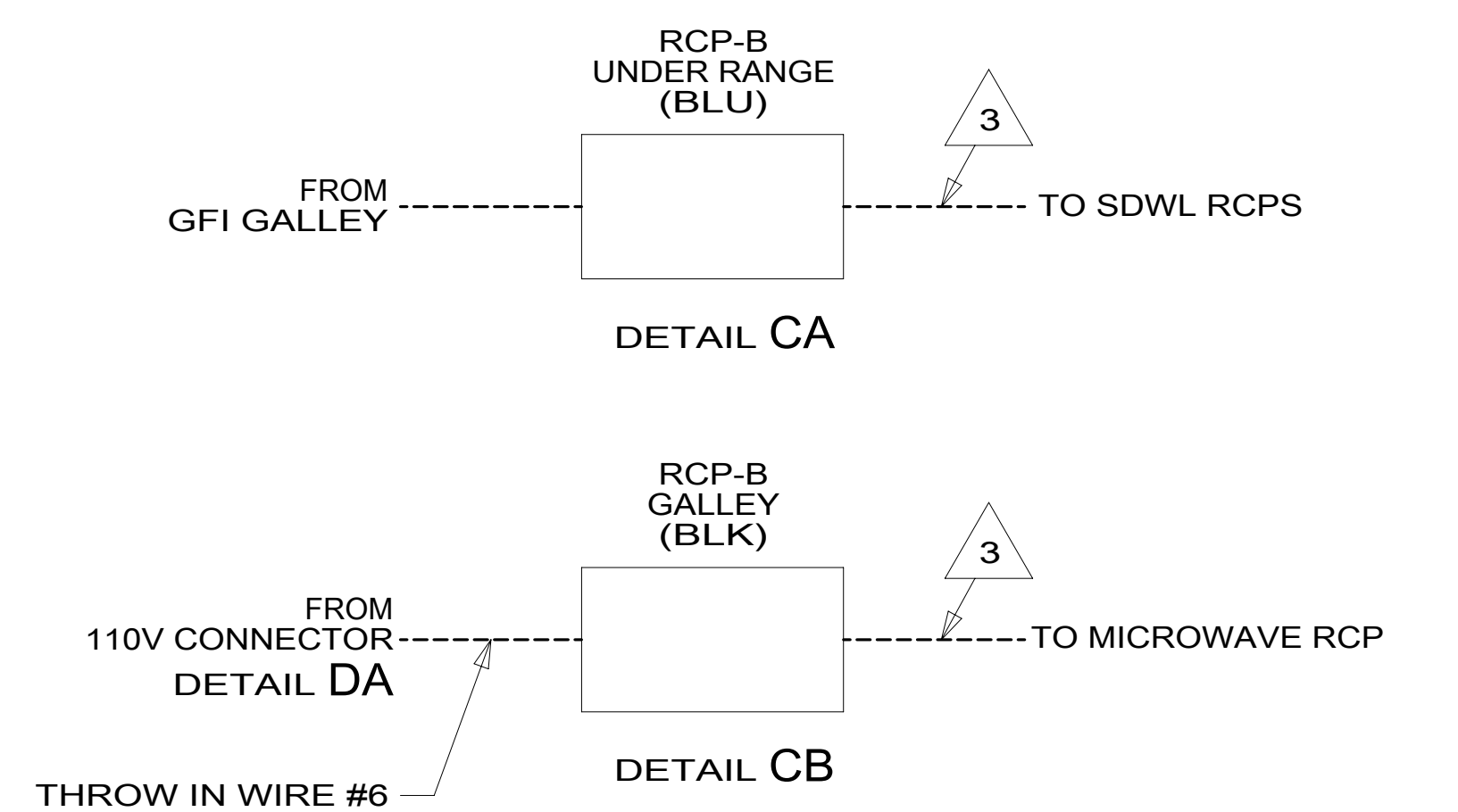
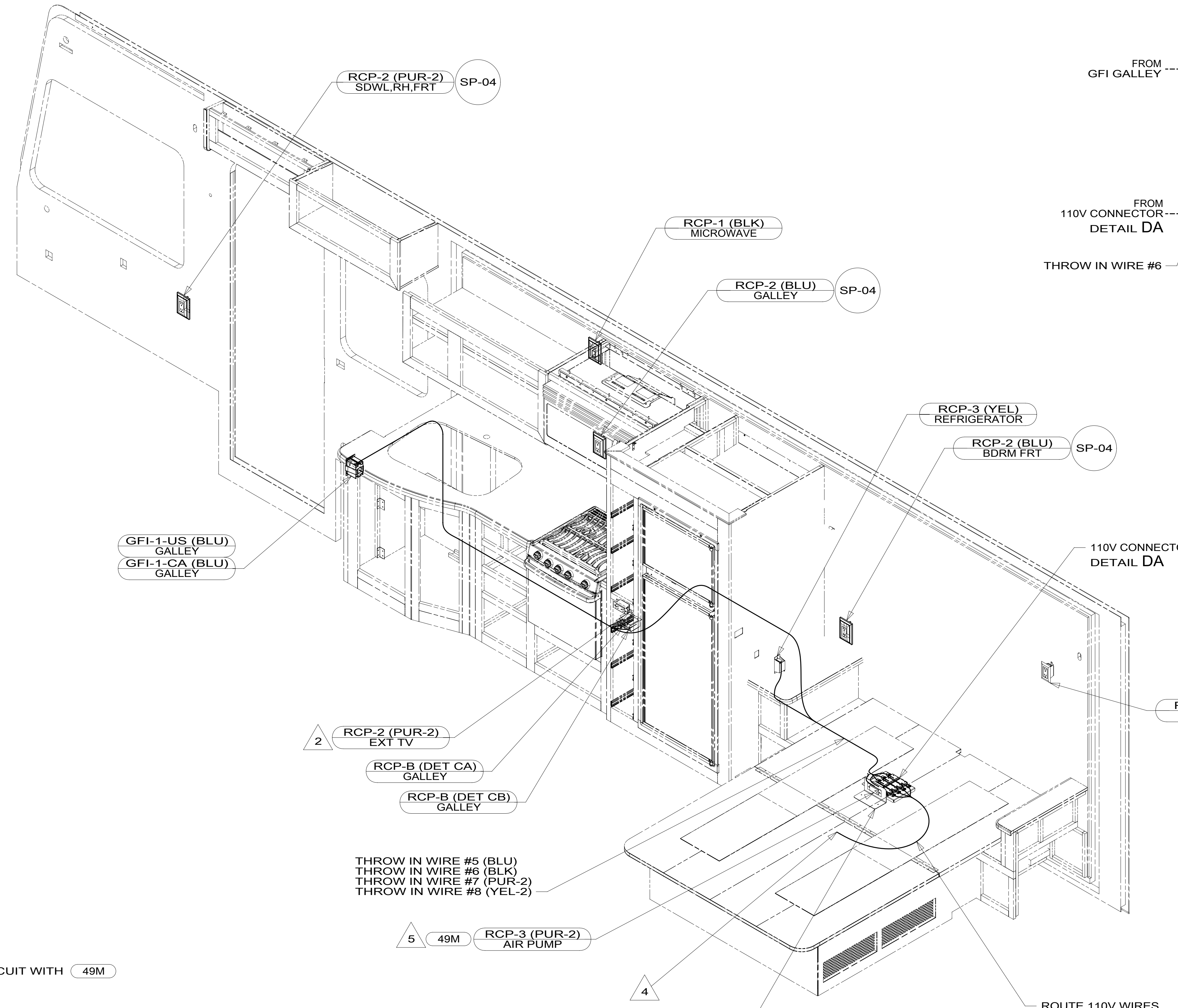
- NOTES:
- 6 WIRE IN ROOF.
 - 5 LOAD CENTER GROUND WIRE MUST BE ATTACHED DIRECTLY TO CHASSIS GROUND.
 - 4 SEE LOAD CENTER/ATS ASM FOR ADDITIONAL INFORMATION.
 - 3. AT MINIMUM ALL WIRES TO BE SUPPORTED AND SECURED PER CODE REQUIREMENTS. USE CLAMP 10495 OR 10497 OR WIRE TIE 8343 OR 108046 AND SCREW G67-XX-XXX OR G56-XX-XXX AS APPROPRIATE FOR INSTALLATION.
 - 2 WIRE ROUTES THRU FLOOR IN THIS AREA.
 - 1 WIRE ROUTED IN SIDEWALL

FOR ELECTRICAL TORQUE SPECIFICATIONS SEE DWG NO. 128783-01-000

FOR ELECTRICAL CALLOUTS SEE DWG NO. 121339-01-000

61M	TV(REAR)-28" COLOR STEREO
265	CODES/STANDARDS-CSA/CMVSS
1B1	CODES/STANDARDS USA
1B1	265
FIRST USED	
15 D30A	
DO NOT SCALE DRAWING	
TITLE: WIRING INSTL-BODY, 110V	
SHEET 2	PART NO 188888 REV 1
1 22-Dec-2014	

* 188888



- 5 INSTALL RECEPTACLE IN LINE ON PUR-2 CIRCUIT WITH 49M
- 4 WIRE ROUTES THRU FLOOR IN THIS AREA.
- 3 WIRE IN SIDEWALL
- 2 MOUNT RECEPTACLE TO SIDEWALL.

1. AT MINIMUM ALL WIRES TO BE SUPPORTED AND SECURED PER CODE REQUIREMENTS. USE CLAMP 10495 OR 10497 OR WIRE TIE 8343 OR 108046 AND SCREW G67-XX-XXX OR G56-XX-XXX AS APPROPRIATE FOR INSTALLATION.

NOTES:

THROW IN WIRE #5 (BLU)
THROW IN WIRE #6 (BLK)
THROW IN WIRE #7 (PUR-2)
THROW IN WIRE #8 (YEL-2)

PANEL-RECEPTACLE
188004-02-CHT
SCREW
G39-10-12U (2)

ROUTE 110V WIRES
WITH DRAINAGE PIPES

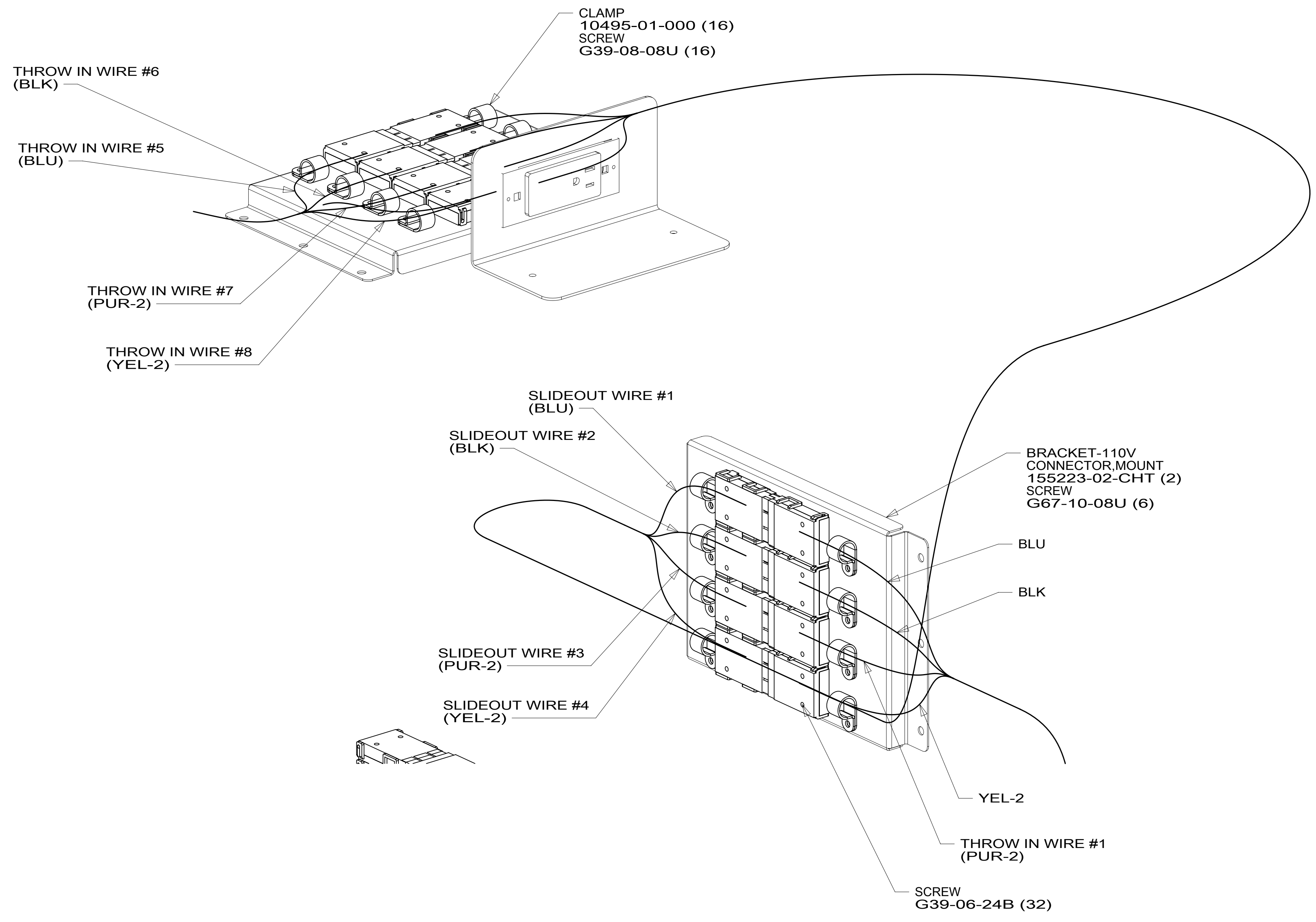
FOR ELECTRICAL
TORQUE
SPECIFICATIONS
SEE DWG NO.
128783-01-000

FOR
ELECTRICAL
CALLOUTS
SEE DWG NO.
121339-01-000

- 49M AIR SLEEP SYSTEM-QUEEN SIZE
- 265 CODES/STANDARDS-CSA/CMVSS
- 1B1 CODES/STANDARDS USA

1B1	265
FIRST USED	
15 D30A	
DO NOT SCALE DRAWING	
TITLE: WIRING INSTL-BODY, 110V	
SHEET 3	PART NO 188888 REV

* 188888 A *



DETAIL DA

265 CODES/STANDARDS-CSA/CMVSS

1B1 CODES/STANDARDS USA

1B1 265

FIRST USED
15 D30A

DO NOT SCALE DRAWING

TITLE:
WIRING INSTL-BODY, 110V

SHEET 4 PART NO **188888** REV

FOR ELECTRICAL
TORQUE
SPECIFICATIONS
SEE DWG NO.
128783-01-000

X-X
FOR
ELECTRICAL
CALLOUTS
SEE DWG NO.
121339-01-000

A * 188888

