



DANGER

Danger of electrical shock, burns or death. Always remove all power sources before attempting any repair, service or diagnostic work. Power can be present from shore power, generator, inverter or battery. All power sources must be disabled and secured before performing any service.



CAUTION

If you lack the skills, tools or equipment to perform diagnostic or repair work leave such work to an authorized Winnebago Industries dealer or other qualified shop.

8

7

6

5

4

3

2

1

LEXT-3

BB

LAMP-MARKER,W RED LENS
195141-02-CHT
SCREW
G11-08-12U (2)

LAMP ASM-SIDEMARKER
179596-01-CHT

BA

LAMP-MARKER,W AMBER LENS
195141-01-CHT
SCREW
000G11-08-12U (2)

LAMP ASM-SIDEMARKER
179596-01-CHT

LAMP-MARKER,W RED LENS
195141-02-CHT
SCREW
G11-08-12U (2)

LAMP-MARKER,W AMBER LENS
195141-01-CHT
SCREW
000G11-08-12U (2)

- 265 CODES/STANDARDS-CSA/CMVSS
- 1B1 CODES/STANDARDS USA
- 1B1 265

WINNEBAGO COPYRIGHT 2014
WINNEBAGO
INDUSTRIES, INC.

DFT-ORIG	ORIG. DATE
CHKR	ALL DIMENSIONS ARE IN MILLIMETERS
P.E.	
M.E.	FIRST USED
DSNR	15 H-SERIES
UNSPECIFIED TOLERANCES ARE:	
WHOLE DIM (X)	: 3
ONE-PLACE (X.X)	: 1.5
TWO-PLACE (X.XX)	: 0.50
ANGLE	: 1°
THIRD ANGLE PROJECTION	
DO NOT SCALE DRAWING REFER TO ES0018 FOR FASTENER TIGHTENING GUIDELINES	

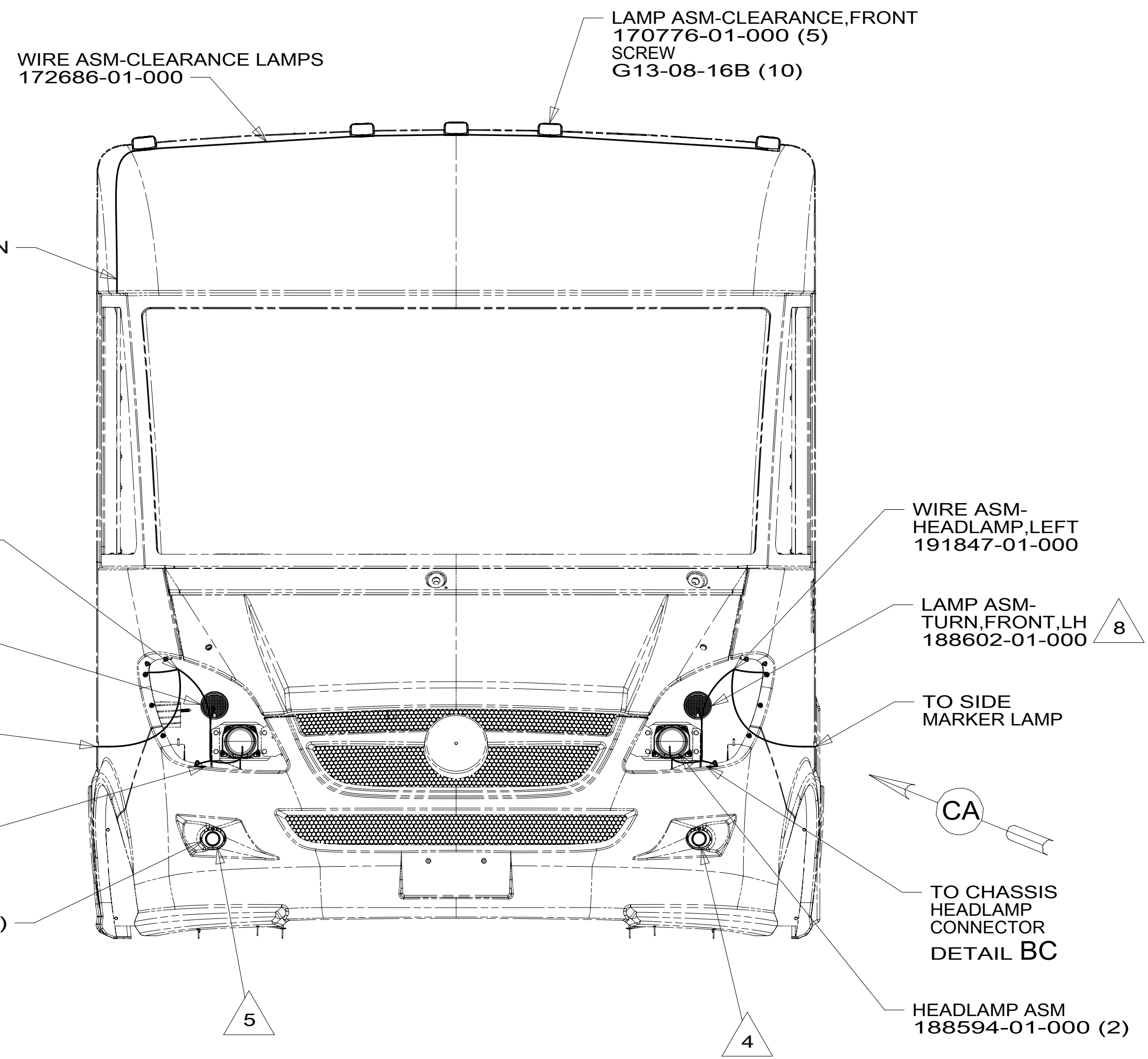
FOR ELECTRICAL
TORQUE
SPECIFICATIONS
SEE DWG NO.
128783-01-000

FOR
ELECTRICAL
CALLOUTS
SEE DWG NO.
121339-01-000

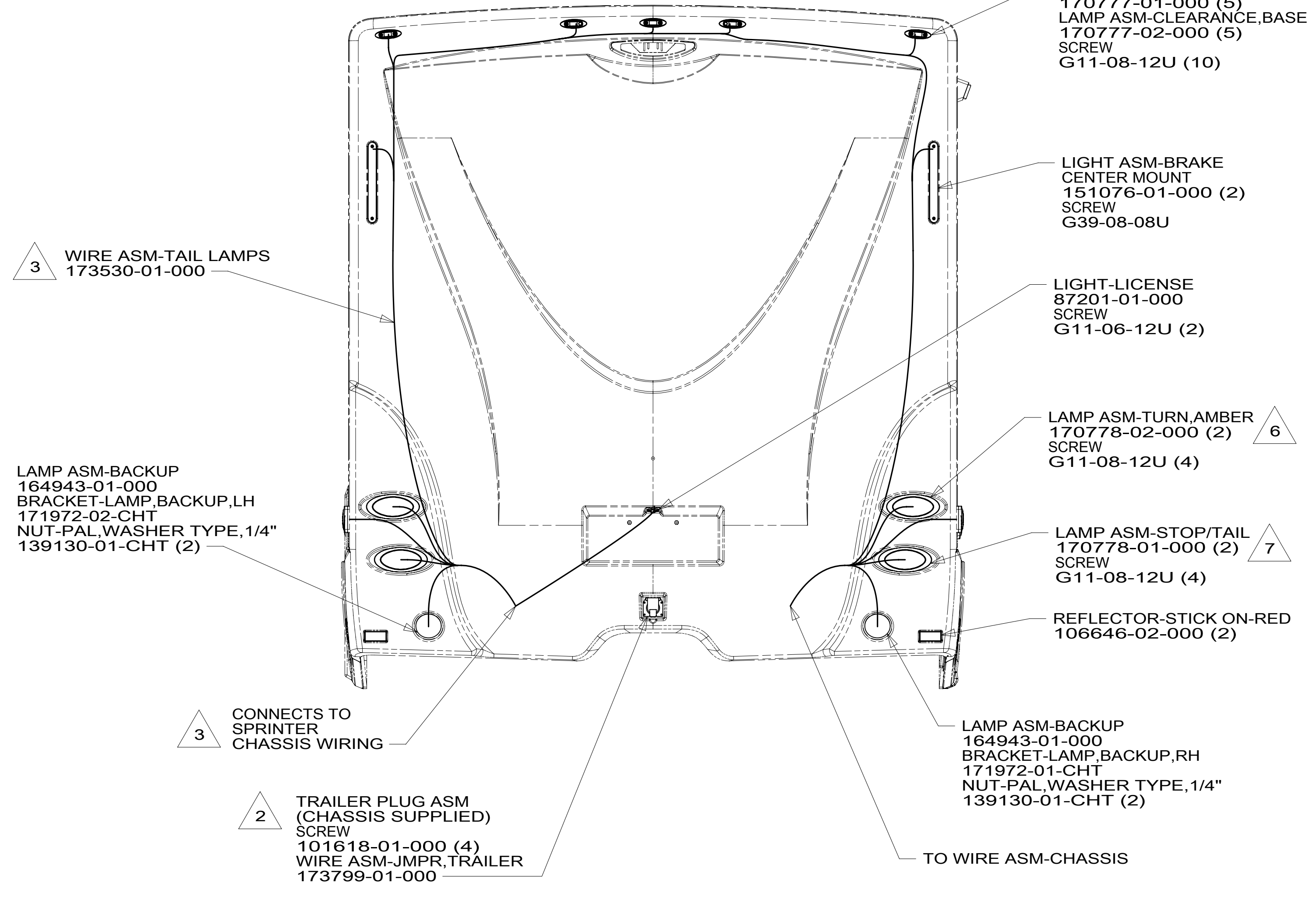
TITLE:
WIRING INSTL-EXTERIOR LAMPS

SHEET **1** OF **3** PART NO **188806** REV

188806 A

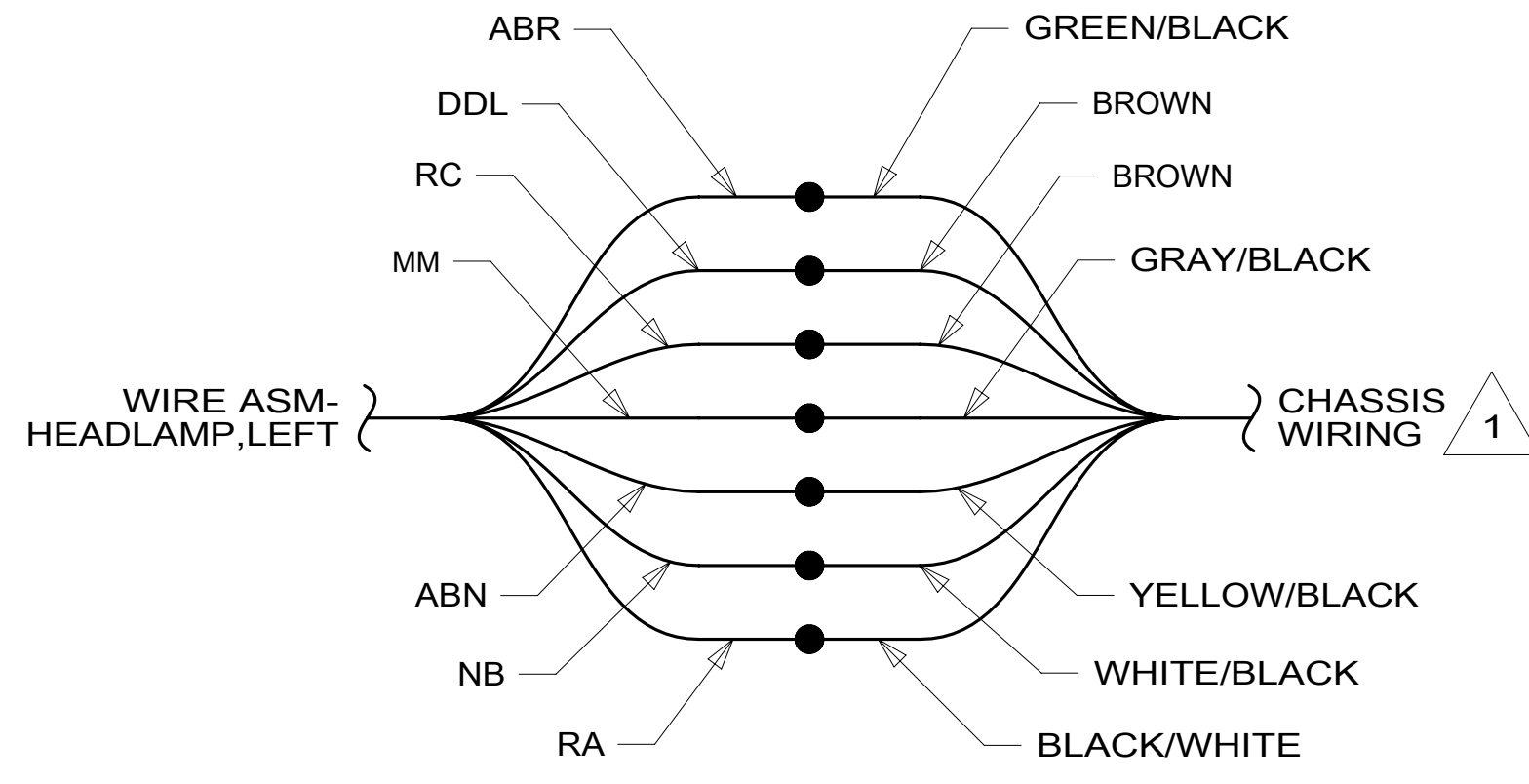


VIEW BA

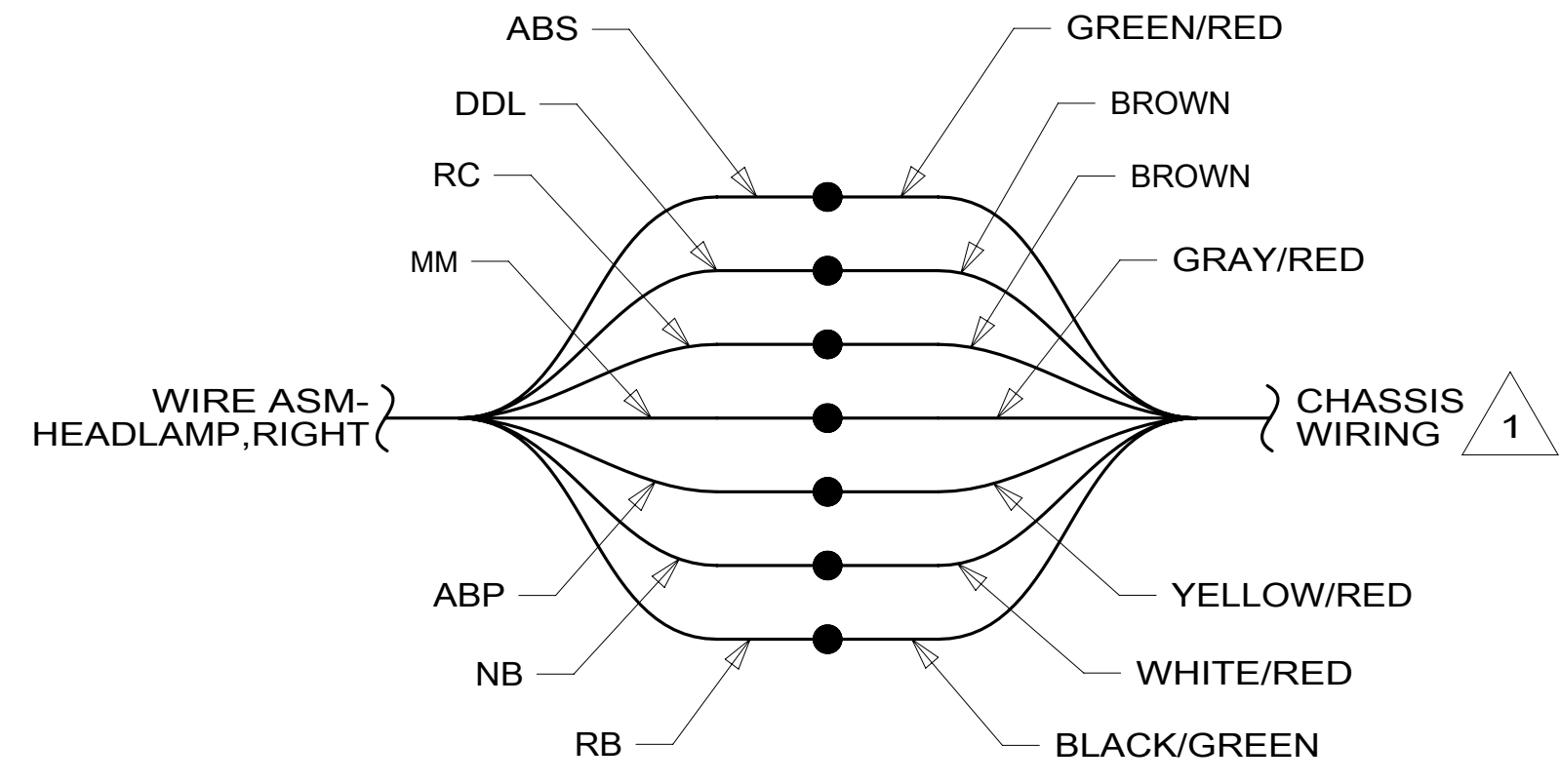


VIEW BB

- 8 REMOVE BULB FROM LAMP SOCKET AND USE IT IN SOCKET BUILT INTO WIRE ASM-HEADLAMP.
- 7 CONNECT CIRCUIT X TO RED WIRE. CONNECT CIRCUIT MM TO BLK WIRE. CONNECT CIRCUIT MS TO WHT WIRE.
- 6 CONNECT CIRCUIT SC OR SD TO RED WIRE. CONNECT CIRCUIT MS TO WHT WIRE.
- 5 CONNECT CIRCUIT MF TO GRY/YEL WIRE. CONNECT CIRCUIT AR TO BRN WIRE.
- 4 CONNECT CIRCUIT MF TO GRY/PUR WIRE. CONNECT CIRCUIT AR TO BRN WIRE.
- 3 REMOVE EXTENSION LOOMS THAT ARE SUPPLIED WITH CHASSIS. THE CHASSIS IS SUPPLIED WITH TWO 7-PIN CONNECTORS ALONG THE LEFT SIDE FRAME RAIL. THE CHASSIS WIRING WITH THE TWO 7-PIN CONNECTORS HAS A LONGER DROP AND A SHORTER DROP. ATTACH THE LONGER DROP TO THE WIRE ASM-TAILLAMP CONNECTOR WITH ONLY 2 PINS IN IT. ATTACH THE SHORTER DROP TO THE WIRE ASM-TAILLAMP CONNECTOR WITH 5 PINS.
- 2 SECURE WIRE BELOW COACH WITH CLAMP 10495-01-000 AND SCREW G67-10-12B.
- 1 CUT 14 POSITION CONNECTOR FROM CHASSIS WIRING. SPLICE TO WIRE ASM-HEADLAMP AS SHOWN. TAPE BACK ANY UNUSED WIRES.



DETAIL BC



DETAIL BD

265 CODES/STANDARDS-CSA/CMVSS
 1B1 CODES/STANDARDS USA
 1B1 265

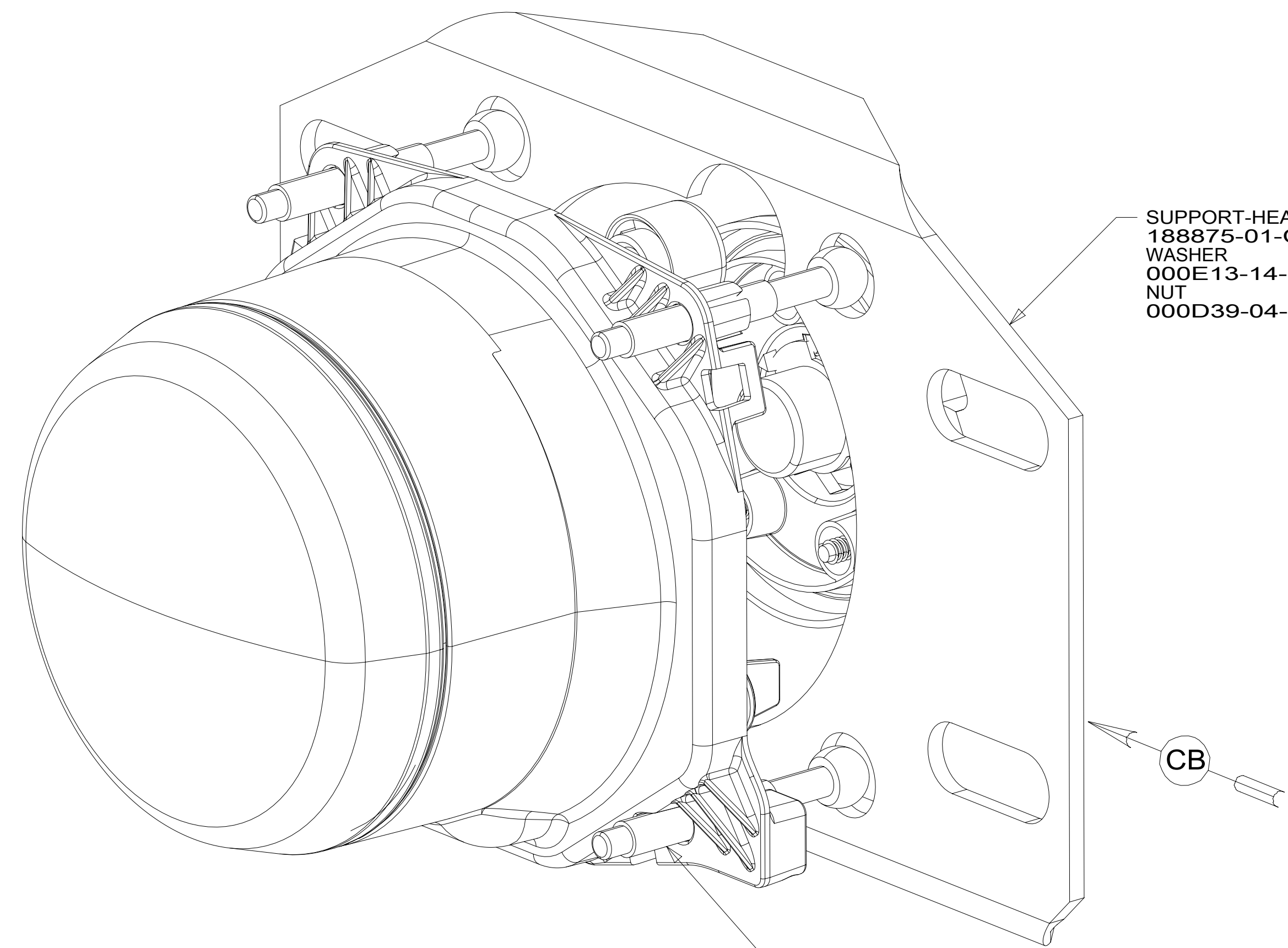
FIRST USED	
15 H-SERIES	
DO NOT SCALE DRAWING	
TITLE: WIRING INSTL-EXTERIOR LAMPS	
SHEET 2	PART NO 188806 REV

FOR ELECTRICAL TORQUE SPECIFICATIONS SEE DWG NO. 128783-01-000

FOR ELECTRICAL CALLOUTS SEE DWG NO. 121339-01-000

NOTES:

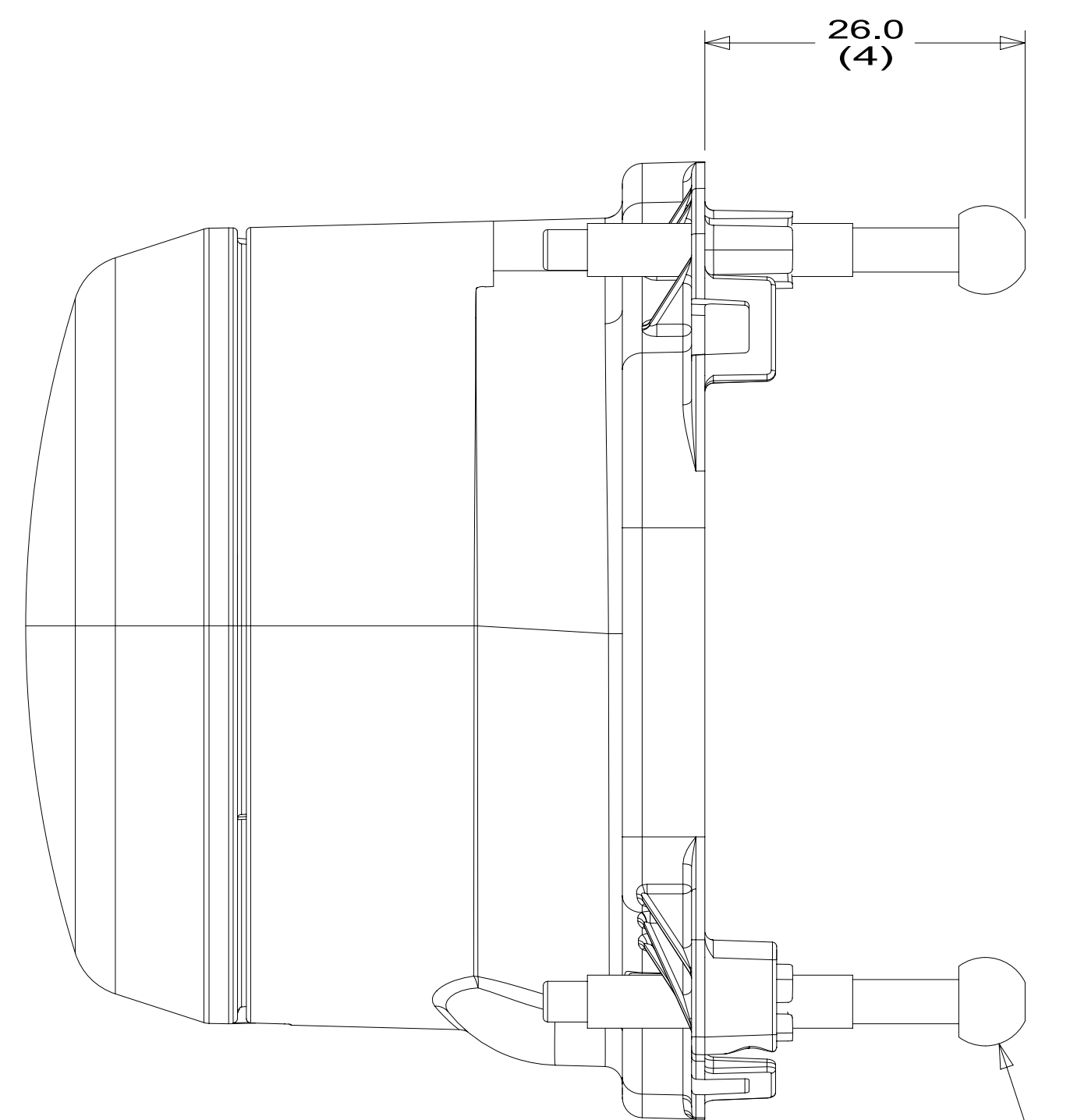
*188806 A



SUPPORT-HEADLAMP
188875-01-CHT (2)
WASHER
000E13-14-00U (8)
NUT
000D39-04-00U (8)

REMOVE STUD AND REINSTALL
WITH BALL END TOWARD
BACK OF HEADLAMP

VIEW CA



26.0
(4)

REMOVE STUD AND REINSTALL
WITH BALL END TOWARD
BACK OF HEADLAMP

VIEW CB
(2 PLACES)

265 CODES/STANDARDS-CSA/CMVSS

1B1 CODES/STANDARDS USA

1B1 265

FIRST USED
15 H-SERIES

DO NOT SCALE DRAWING

TITLE:
WIRING INSTL-EXTERIOR LAMPS

SHEET 3 PART NO **188806** REV

FOR ELECTRICAL
TORQUE
SPECIFICATIONS
SEE DWG NO.
128783-01-000

X-X
FOR
ELECTRICAL
CALLOUTS
SEE DWG NO.
121339-01-000

* 188806 *