



DANGER

Danger of electrical shock, burns or death. Always remove all power sources before attempting any repair, service or diagnostic work. Power can be present from shore power, generator, inverter or battery. All power sources must be disabled and secured before performing any service.

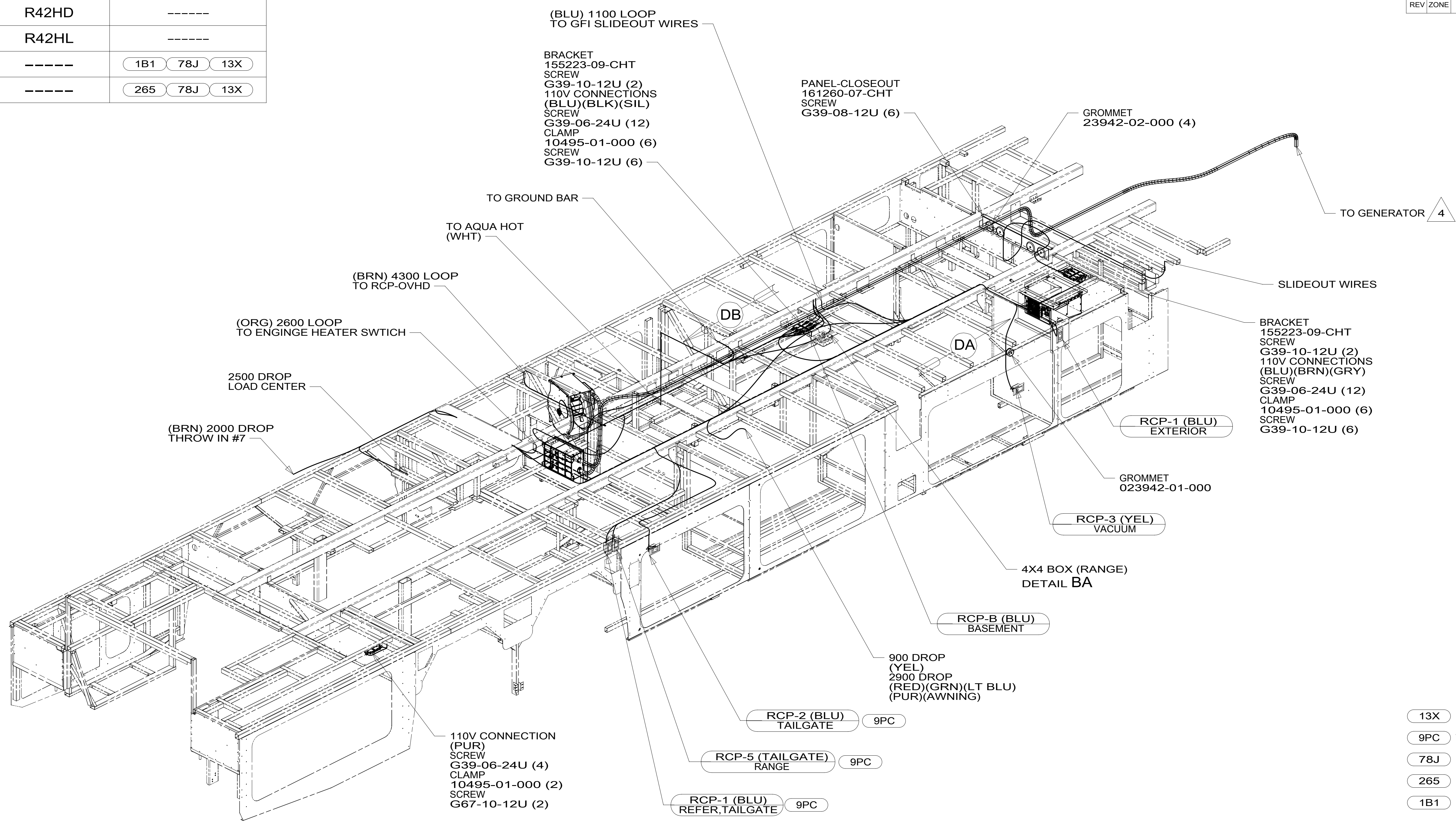


CAUTION

If you lack the skills, tools or equipment to perform diagnostic or repair work leave such work to an authorized Winnebago Industries dealer or other qualified shop.

DRAWING NO.	MODEL	FEATURE
188513-01	R42HD	-----
188513-02	R42HL	-----
188513-14	-----	1B1 78J 13X
188513-18	-----	265 78J 13X

RELEASE	REV/DATE	DWG NO	188513
REV ZONE	REVISION RECORD	DATE	DTR-ORIG



(BLU) 1100 LOOP TO GFI SLIDEOUT WIRES

BRACKET
155223-09-CHT
SCREW
G39-10-12U (2)
110V CONNECTIONS
(BLU)(BLK)(SIL)
SCREW
G39-06-24U (12)
CLAMP
10495-01-000 (6)
SCREW
G39-10-12U (6)

PANEL-CLOSEOUT
161260-07-CHT
SCREW
G39-08-12U (6)

GROMMET
23942-02-000 (4)

BRACKET
155223-09-CHT
SCREW
G39-10-12U (2)
110V CONNECTIONS
(BLU)(BRN)(GRY)
SCREW
G39-06-24U (12)
CLAMP
10495-01-000 (6)
SCREW
G39-10-12U (6)

(BRN) 2000 DROP
THROW IN #7

2500 DROP
LOAD CENTER

(ORG) 2600 LOOP
TO ENGINE HEATER SWITCH

(BRN) 4300 LOOP
TO RCP-OVHD

TO AQUA HOT
(WHT)

TO GROUND BAR

RCP-1 (BLU)
EXTERIOR

GROMMET
023942-01-000

RCP-3 (YEL)
VACUUM

4X4 BOX (RANGE)
DETAIL BA

RCP-B (BLU)
BASEMENT

900 DROP
(YEL)
2900 DROP
(RED)(GRN)(LT BLU)
(PUR)(AWNING)

RCP-2 (BLU)
TAILGATE 9PC

RCP-5 (TAILGATE)
RANGE 9PC

RCP-1 (BLU)
REFER, TAILGATE 9PC

110V CONNECTION
(PUR)
SCREW
G39-06-24U (4)
CLAMP
10495-01-000 (2)
SCREW
G67-10-12U (2)

- 13X INVERTER/CHARGER 2.0 KW
- 9PC TAILGATE PACKAGE
- 78J ELECTRICAL SYSTEM-50 AMP
- 265 CODES/STANDARDS-CSA/CMVSS
- 1B1 CODES/STANDARDS USA

1B1 265



DTR	ORIG. DATE
CHKR	ALL DIMENSIONS ARE IN MILLIMETERS
P.E.	
M.E.	FIRST USED
DSNR	15 R42HD
UNSPECIFIED TOLERANCES ARE:	
WHOLE DIM (X)	: 3
ONE-PLACE (X.X)	: 1.5
TWO-PLACE (X.XX)	: 0.50
ANGLE	: 1'
THIRD ANGLE PROJECTION	
DO NOT SCALE DRAWING	REFER TO ES0018 FOR FASTENER TIGHTENING GUIDELINES
TITLE: WIRING INSTL-BODY, 110V	
SHEET 1 OF 5	PART NO 188513 REV

4 SEE GENERATOR INSTL FOR ADDITIONAL INFORMATION.

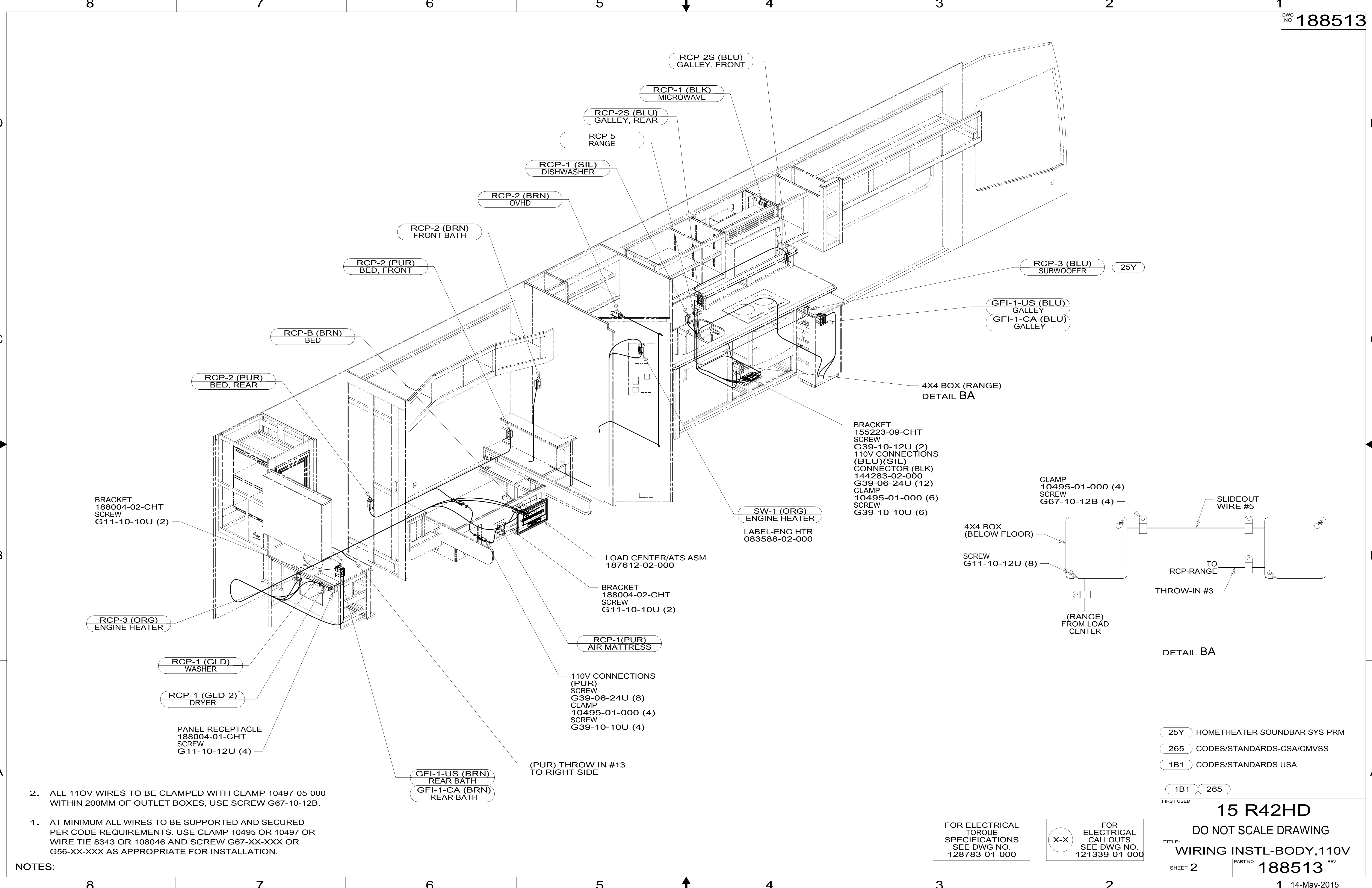
3. WIRES THAT REST ON WIRE TRAYS ARE TO BE TIED DOWN WITH WIRE TIE 8343-04-000.
2. CLAMP TO FLOOR SUPPORT TUBES AS NECESSARY WITH CLAMP 10497-01-000.
1. AT MINIMUM ALL WIRES TO BE SUPPORTED AND SECURED PER CODE REQUIREMENTS. USE CLAMP 10495 OR 10497 OR WIRE TIE 8343 OR 108046 AND SCREW G67-XX-XXX OR G56-XX-XXX AS APPROPRIATE FOR INSTALLATION.

FOR ELECTRICAL TORQUE SPECIFICATIONS SEE DWG NO. 128783-01-000

FOR ELECTRICAL CALLOUTS SEE DWG NO. 121339-01-000

NOTES:

188513



- NOTES:
1. AT MINIMUM ALL WIRES TO BE SUPPORTED AND SECURED PER CODE REQUIREMENTS. USE CLAMP 10495 OR 10497 OR WIRE TIE 8343 OR 108046 AND SCREW G67-XX-XXX OR G56-XX-XXX AS APPROPRIATE FOR INSTALLATION.
 2. ALL 110V WIRES TO BE CLAMPED WITH CLAMP 10497-05-000 WITHIN 200MM OF OUTLET BOXES, USE SCREW G67-10-12B.

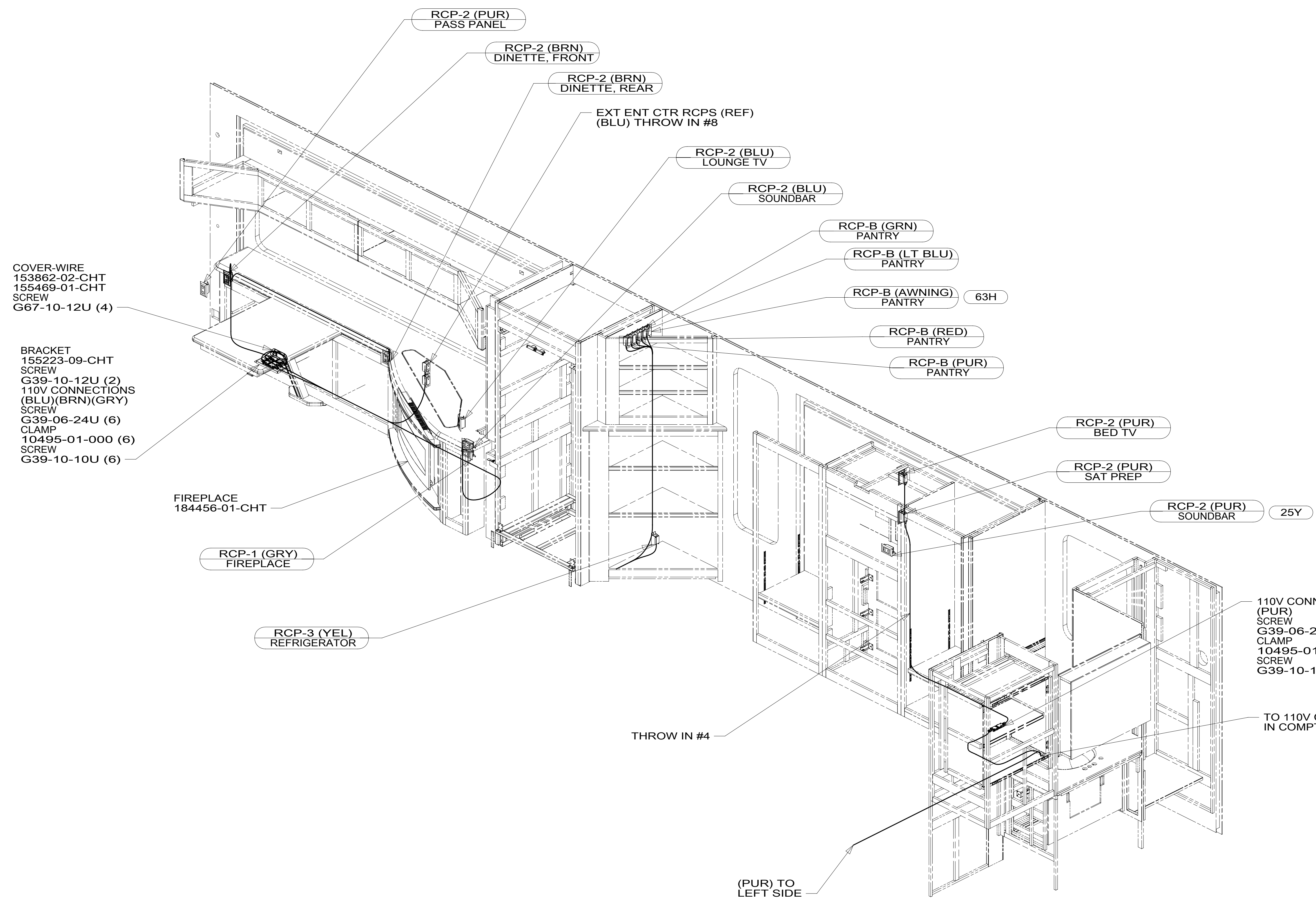
FOR ELECTRICAL TORQUE SPECIFICATIONS SEE DWG NO. 128783-01-000

FOR ELECTRICAL CALLOUTS SEE DWG NO. 121339-01-000

- 25Y HOMETHEATER SOUNDBAR SYS-PRM
- 265 CODES/STANDARDS-CSA/CMVSS
- 1B1 CODES/STANDARDS USA

FIRST USED	
15 R42HD	
DO NOT SCALE DRAWING	
TITLE: WIRING INSTL-BODY, 110V	
SHEET 2	PART NO 188513 REV

*188513 *A



COVER-WIRE
153862-02-CHT
155469-01-CHT
SCREW
G67-10-12U (4)

BRACKET
155223-09-CHT
SCREW
G39-10-12U (2)
110V CONNECTIONS
(BLU)(BRN)(GRY)
SCREW
G39-06-24U (6)
CLAMP
10495-01-000 (6)
SCREW
G39-10-10U (6)

FIREPLACE
184456-01-CHT

110V CONNECTION
(PUR)
SCREW
G39-06-24U (4)
CLAMP
10495-01-000 (2)
SCREW
G39-10-12U (2)

TO 110V CONNECTION
IN COMPT

- NOTES:
1. AT MINIMUM ALL WIRES TO BE SUPPORTED AND SECURED PER CODE REQUIREMENTS. USE CLAMP 10495 OR 10497 OR WIRE TIE 8343 OR 108046 AND SCREW G67-XX-XXX OR G56-XX-XXX AS APPROPRIATE FOR INSTALLATION.
 2. ALL 110V WIRES TO BE CLAMPED WITH CLAMP 10497-05-000 WITHIN 200MM OF OUTLET BOXES, USE SCREW G67-10-12B.

- 25Y HOMETHEATER SOUNDBAR SYS-PRM
- 63H AWNING (2) PATIO, ARMLESS
- 265 CODES/STANDARDS-CSA/CMVSS
- 1B1 CODES/STANDARDS USA

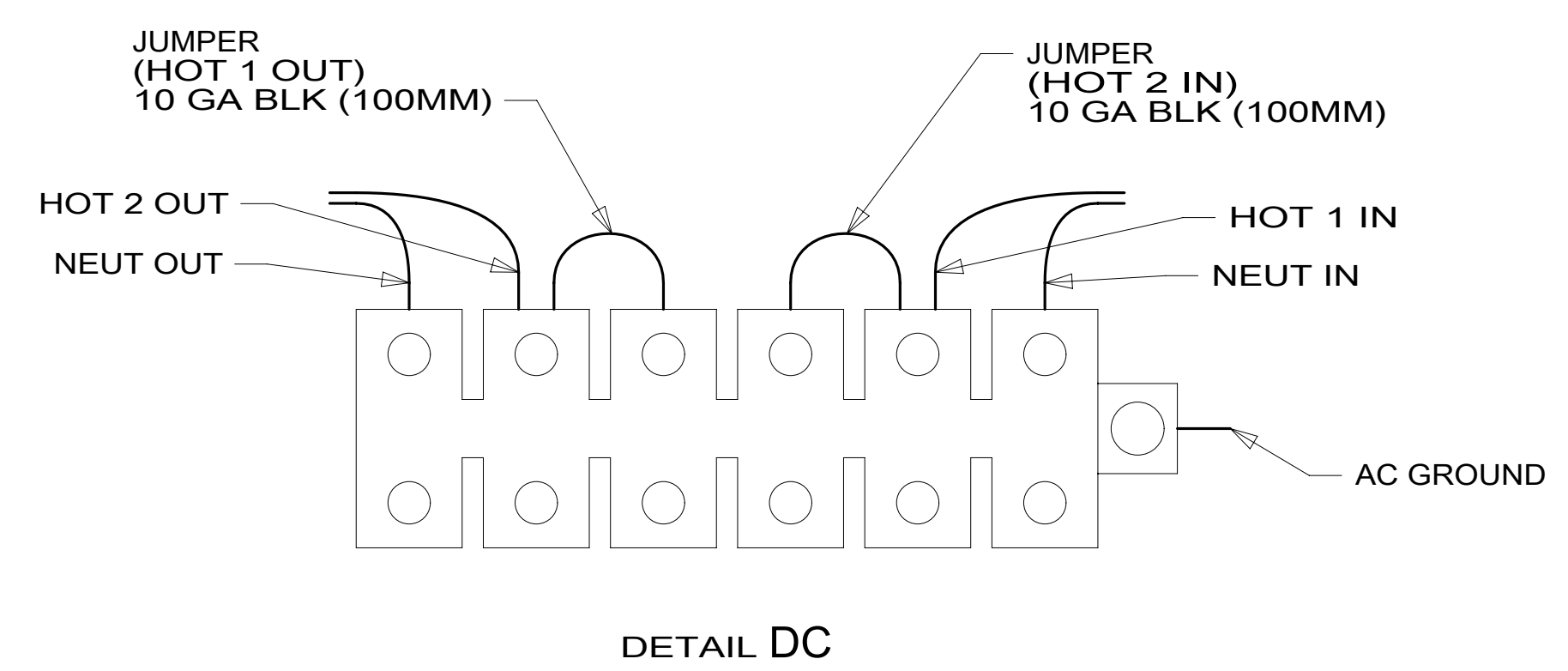
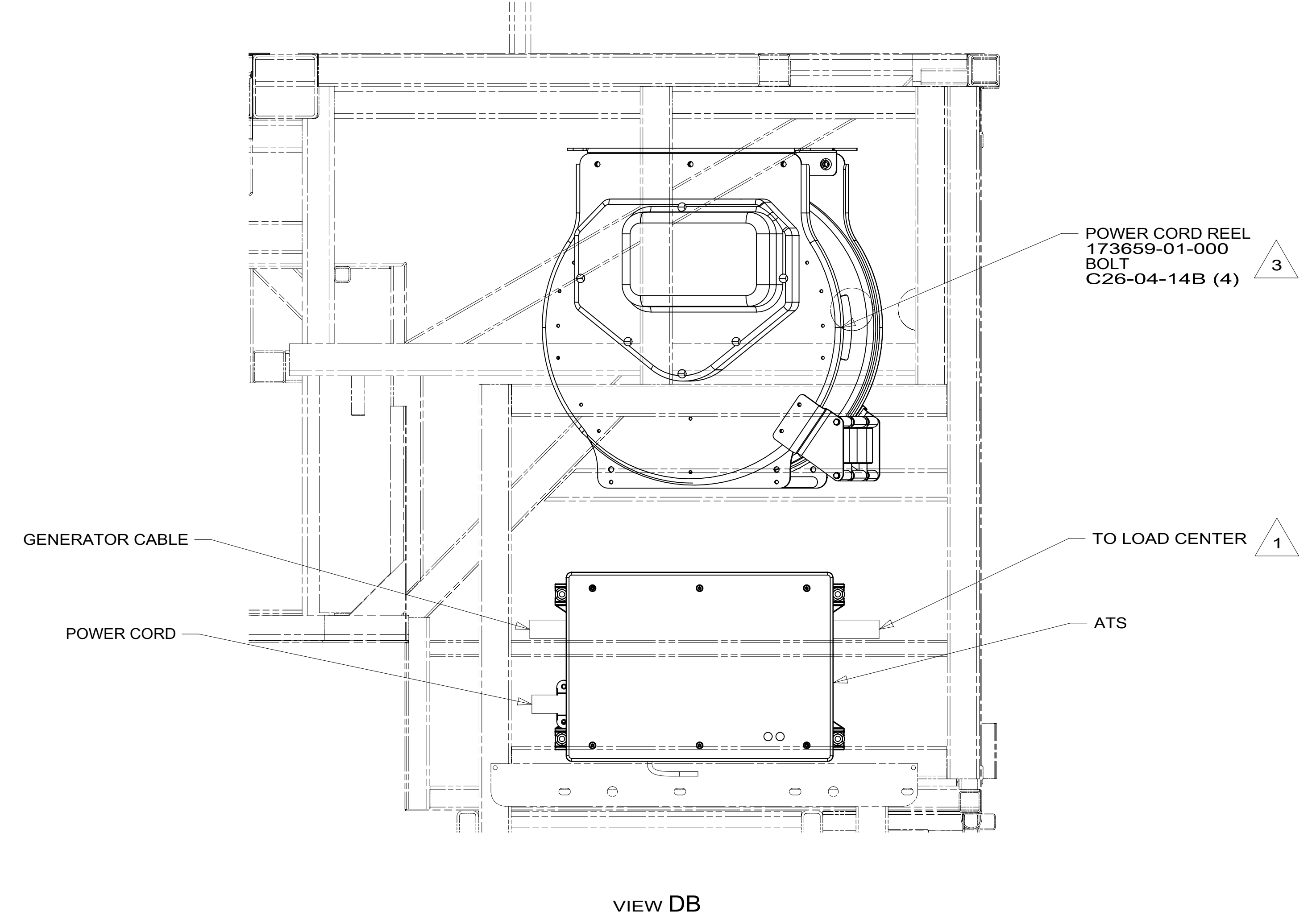
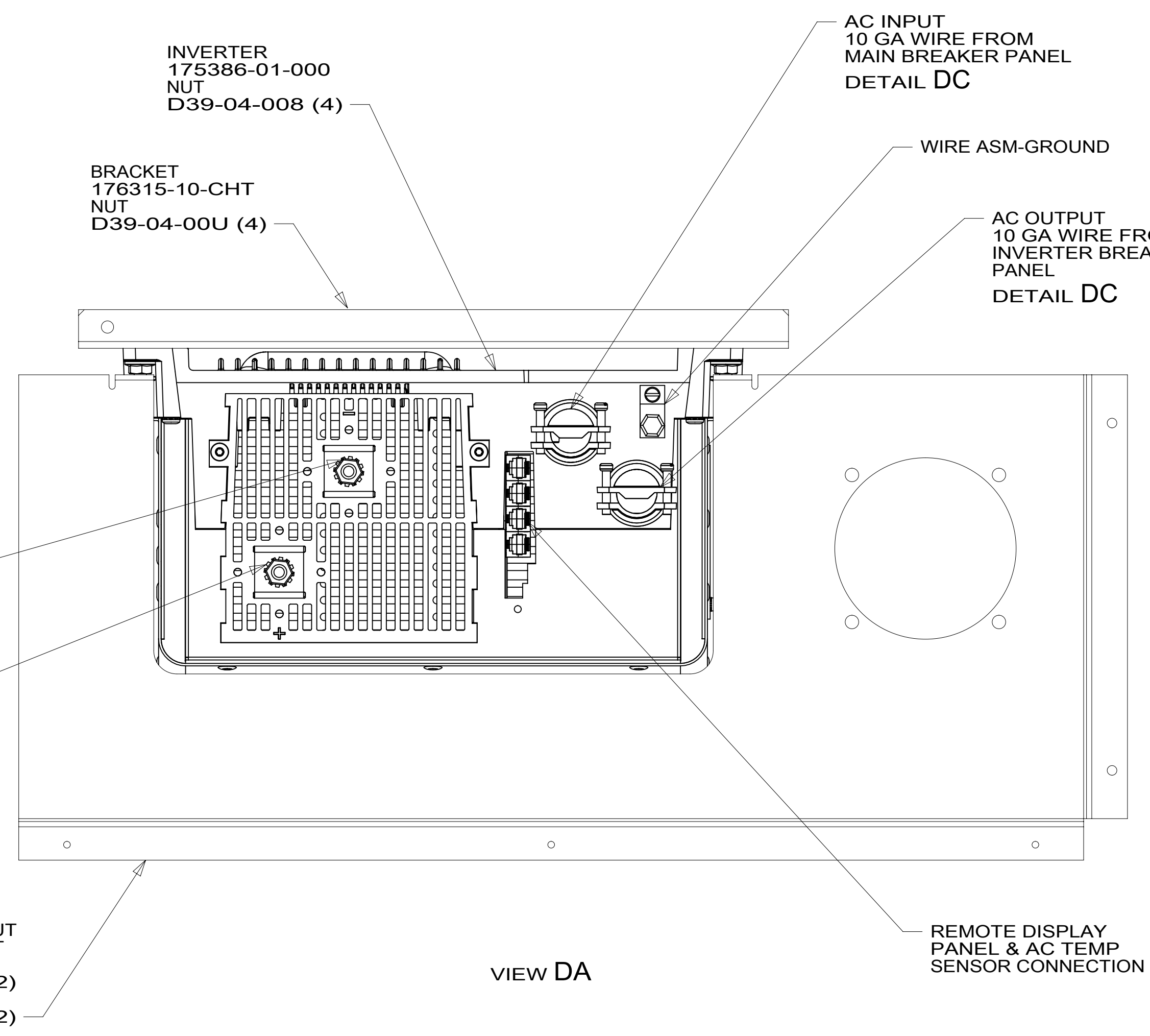
1B1 265

FOR ELECTRICAL
TORQUE
SPECIFICATIONS
SEE DWG NO.
128783-01-000

FOR
ELECTRICAL
CALLOUTS
SEE DWG NO.
121339-01-000

FIRST USED	15 R42HD	
DO NOT SCALE DRAWING		
TITLE: WIRING INSTL-BODY, 110V		
SHEET 3	PART NO 188513	REV

*188513 *A



- NOTES:
- 4 TORQUE TO 10-12 FT LBS.
 - 3 INSERT BOLT FROM BOTTOM OF COMPARTMENT.
 - 2 SEE BATTERY INSTL FOR ADDITIONAL INFORMATION.
 - 1 SEE LOAD CENTER/ATS ASM FOR ADDITIONAL INFORMATION.

FOR ELECTRICAL
TORQUE
SPECIFICATIONS
SEE DWG NO.
128783-01-000

X-X
FOR
ELECTRICAL
CALLOUTS
SEE DWG NO.
121339-01-000

265 CODES/STANDARDS-CSA/CMVSS
1B1 CODES/STANDARDS USA
1B1 265

FIRST USED	
15 R42HD	
DO NOT SCALE DRAWING	
TITLE: WIRING INSTL-BODY, 110V	
SHEET 4	PART NO 188513 REV
1 14-May-2015	

*188513 *A

