



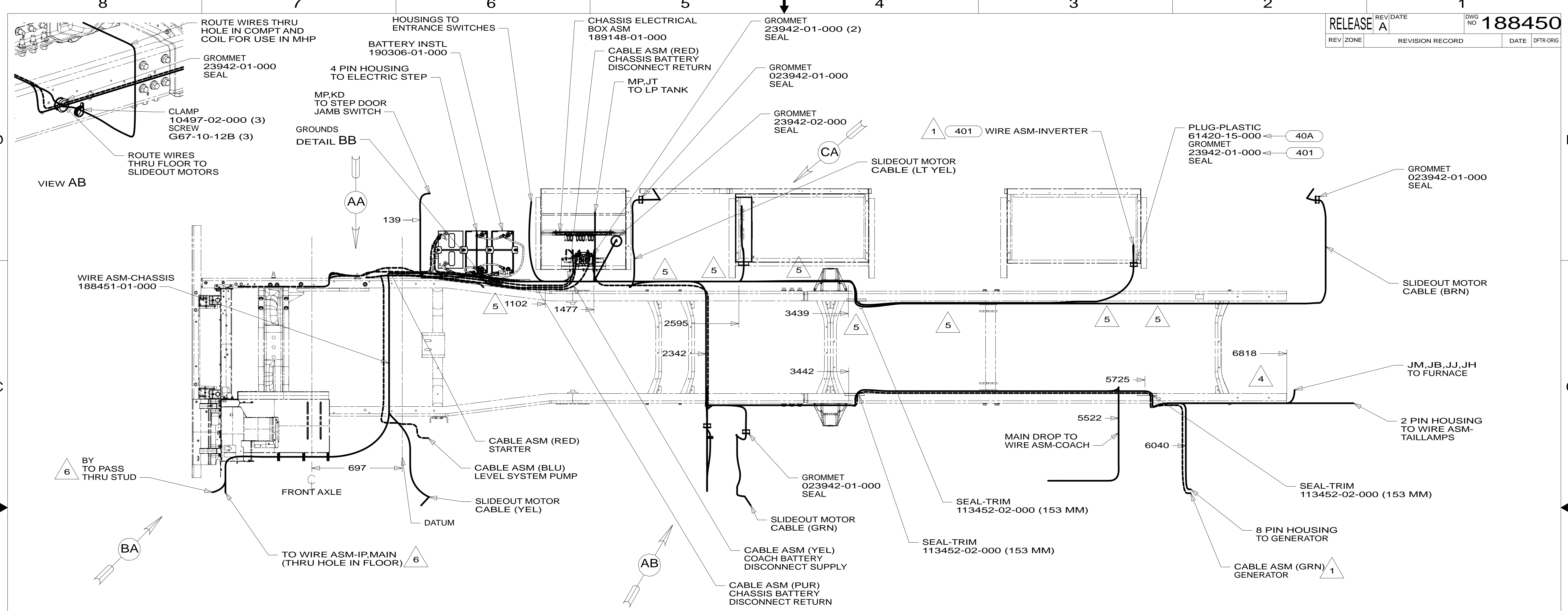
**DANGER**

**Danger of electrical shock, burns or death.** Always remove all power sources before attempting any repair, service or diagnostic work. Power can be present from shore power, generator, inverter or battery. All power sources must be disabled and secured before performing any service.

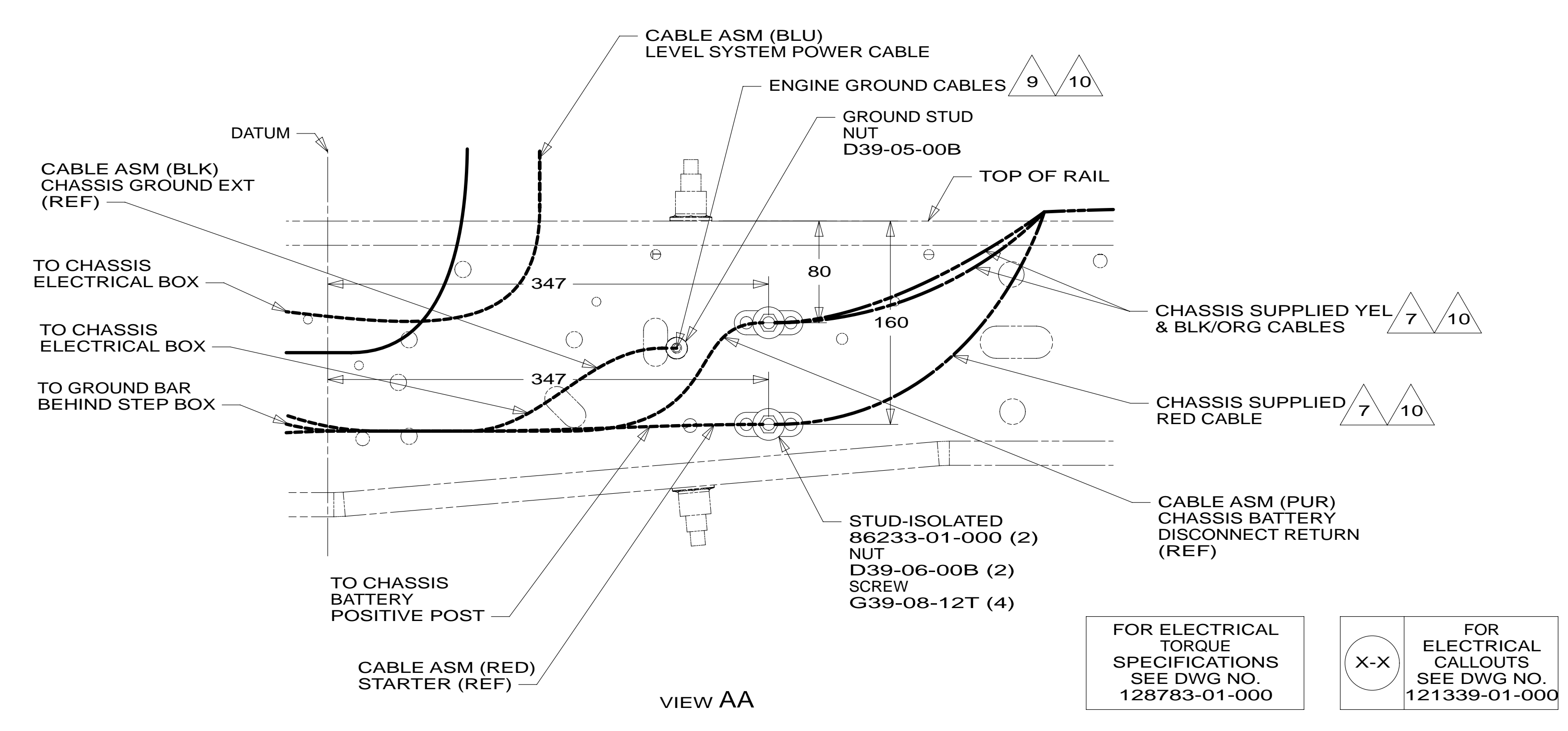


**CAUTION**

If you lack the skills, tools or equipment to perform diagnostic or repair work leave such work to an authorized Winnebago Industries dealer or other qualified shop.



- VIEW AB
- VIEW AA
- NOTES:
- SEE BATTERY INSTL FOR ADDITIONAL INFORMATION.
  - SECURE CONDUIT 41953, TAB AS REQUIRED, OVER ALL WIRES IN CONTACT WITH SHARP EDGES.
  - ALL DIMENSIONS ARE FROM DATUM UNLESS OTHERWISE SPECIFIED.
  - WIRE TIE 8343-04-000. FASTEN EVERY 600MM MINIMUM.
  - CLAMP 83610-01-000, SCREW G11-10-16B.
  - SEE WIRING INSTL-FRONT END FOR ADDITIONAL INFORMATION.
  - CUT CHASSIS SUPPLIED POSITIVE BATTERY CABLE 150MM FROM BATTERY TERMINAL END, DISCARD TERMINAL END AND SEPARATE WIRES. ADD TERMINAL 8348-01-000 AND HEAT SHRINK 176567-04-000 TO RED CABLE (CHASSIS STARTER) AND COMBINE YELLOW (CHASSIS POWER DISTRIBUTION) AND BLACK/ORANGE (CHASSIS ALTERNATOR) WIRES TOGETHER AND ADD TERMINAL 8348-01-000 AND HEAT SHRINK 176567-02-000. COIL EXCESS CABLE ALONG FRAME RAIL JUST BEHIND RADIATOR AND TIE UP WITH TIE-WIRE 8343-04-000.
  - COVER SHARP EDGES WHERE WIRE CROSSES FRAME RAILS.
  - CUT CHASSIS SUPPLIED BATTERY GROUND CABLE 700MM FROM BATTERY TERMINAL AND ADD TERMINAL 8348-01-000 TO CUT END.
  - SUPPLIED WITH CHASSIS



40A INVERTER-DC/AC WITHOUT  
401 INVERTER-DC/AC, 1000 WATT  
265 CODES/STANDARDS-CSA/CMVSS  
1B1 CODES/STANDARDS USA

1B1 265

**WINNEBAGO INDUSTRIES**

COPYRIGHT 2014 WINNEBAGO INDUSTRIES, INC.

ALL DIMENSIONS ARE IN MILLIMETERS

**15 D30A**

UNSPECIFIED TOLERANCES ARE:  
WHOLE DIM (X) ± 3  
ONE-PLACE (X.X) ± 1.5  
TWO-PLACE (X.XX) ± 0.50  
ANGLE ± 1°

THIRD ANGLE PROJECTION

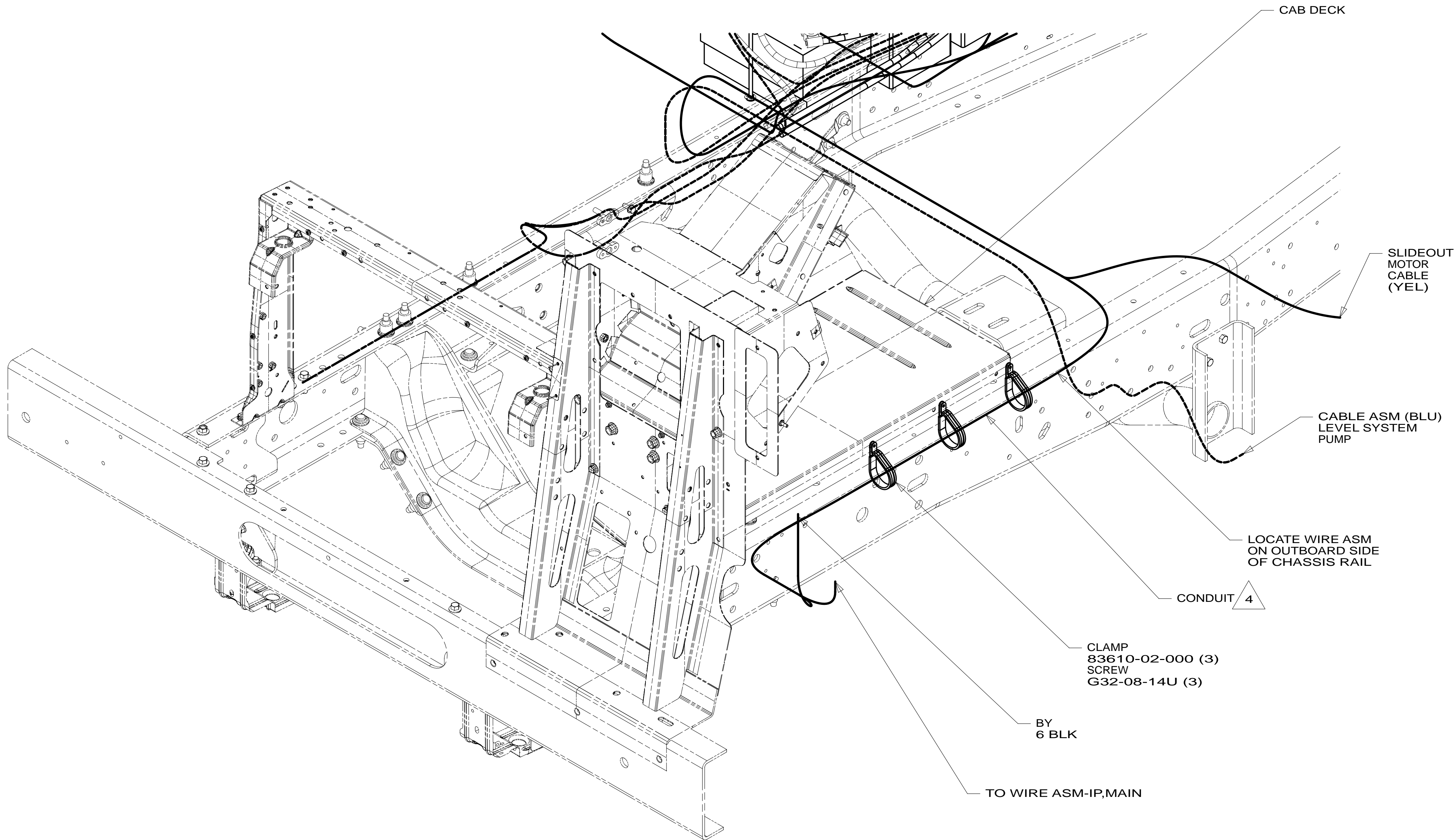
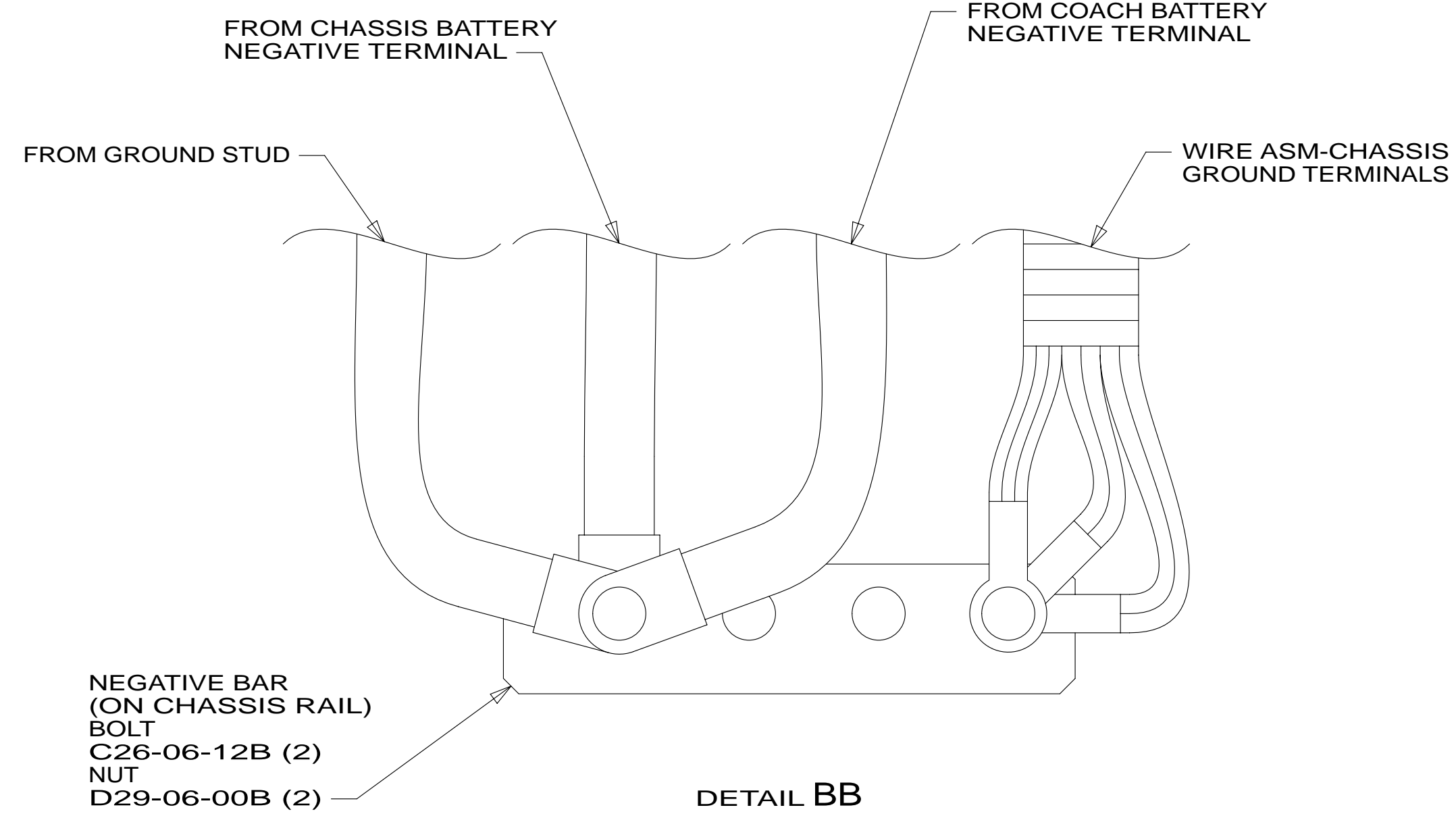
DO NOT SCALE DRAWING REFER TO ES0018 FOR FASTENER TIGHTENING GUIDELINES

TITLE: **WIRING INSTL-CHASSIS**

SHEET **1 OF 3** PART NO **188450** REV

REF: **1** 04-Sep-2014

\* 188450 \*



VIEW BA

4 COVER WITH CONDUIT 41953-10-000 AND 41953-11-000 AS REQUIRED.

3. CONNECT CABLES TO COACH SIDE OF BATTERY DISCONNECT WHEN BATTERY DISCONNECT IS USED.

2. ALL GROUND WIRE TO BE COVERED WITH TUBING 8041-02-000.

1. CUT OFF EXCESS END OF WIRE TIE.

NOTES:

FOR ELECTRICAL  
TORQUE  
SPECIFICATIONS  
SEE DWG NO.  
128783-01-000

FOR ELECTRICAL  
CALLOUTS  
SEE DWG NO.  
121339-01-000

265 CODES/STANDARDS-CSA/CMVSS

1B1 CODES/STANDARDS USA

1B1 265

FIRST USED		15 D30A	
		DO NOT SCALE DRAWING	
TITLE:		WIRING INSTL-CHASSIS	
SHEET 2	PART NO	188450	REV

D

D

C

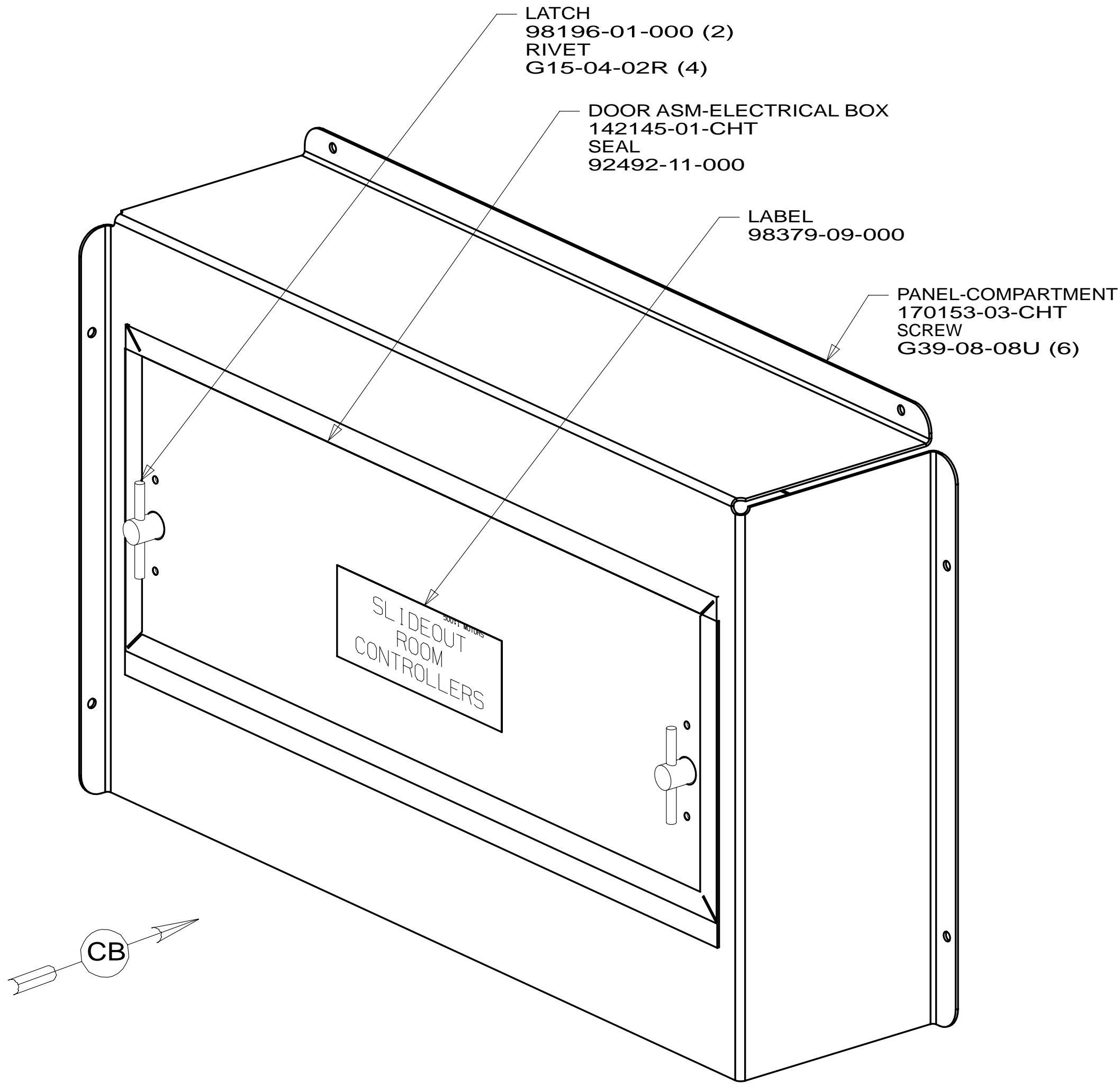
C

B

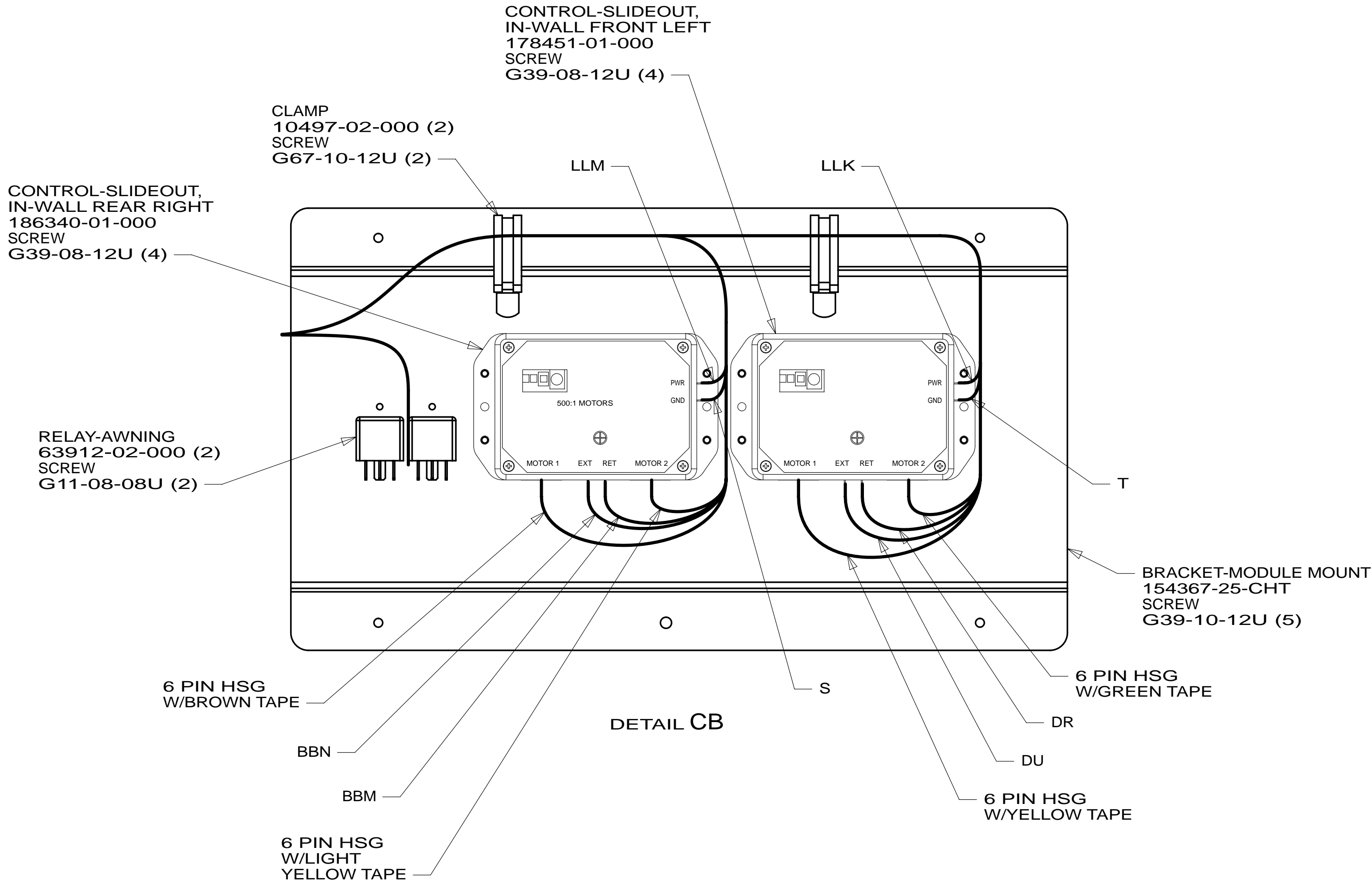
B

A

A



VIEW CA



1 SEE CHASSIS ELECTRICAL BOX ASM FOR ADDITIONAL INFORMATION.

NOTES:

FOR ELECTRICAL  
TORQUE  
SPECIFICATIONS  
SEE DWG NO.  
128783-01-000

FOR  
ELECTRICAL  
CALLOUTS  
SEE DWG NO.  
121339-01-000

265 CODES/STANDARDS-CSA/CMVSS

1B1 CODES/STANDARDS USA

1B1 265

FIRST USED		
15 D30A		
DO NOT SCALE DRAWING		
TITLE: WIRING INSTL-CHASSIS		
SHEET 3	PART NO 188450	REV