



DANGER

Danger of electrical shock, burns or death. Always remove all power sources before attempting any repair, service or diagnostic work. Power can be present from shore power, generator, inverter or battery. All power sources must be disabled and secured before performing any service.



CAUTION

If you lack the skills, tools or equipment to perform diagnostic or repair work leave such work to an authorized Winnebago Industries dealer or other qualified shop.

DRAWING NO.	MODEL	SHEET
188336-01	E27N	1,2,3,6
188336-02	E26HE	1,2,3,7
188336-03	E30T	1,2,3,6
188336-04	E31KE	1,2,3,7
188336-05	E35B	1,2,3,6
188336-06	E35F	1,2,3,6
188336-07	E36Y	1,4,5,6
188336-08	E36Y	1,4,6,8

RELEASE A REV DATE DWG NO 188336
 REV ZONE REVISION RECORD DATE DFR-ORIG

	E26HE	E27N	E30T	E31KE	E35B	E35F	E36Y 1	E36Y 2
CABLE ASM-CHASSIS GND EXT (BLK)	133566-12-018	133566-12-011	133566-12-032	133566-12-011	133566-12-011	133566-12-010	133566-12-034	133566-12-034
CABLE ASM-CHASSIS BATTERY DISCONNECT SUPPLY (RED)	141415-32-010	141415-32-029	141415-32-034	141415-32-023	141415-32-024	141415-32-026	141415-32-042	141415-32-042
CABLE ASM-COACH BATTERY DISCONNECT SUPPLY (YEL)	141416-52-014	141416-52-024	141416-52-037	141416-52-020	141416-52-024	141416-52-027	141416-52-038	141416-52-054
CABLE ASM-COACH BATTERY GND (BLK)	133567-12-008	133567-12-008	133567-12-008	133567-12-008	133567-12-008	133567-12-008	133567-12-008	133567-12-008
CABLE ASM-CHASSIS BATTERY DISCONNECT RETURN (PUR)		141415-12-028	141415-12-027		141415-12-028	141415-12-030	141415-12-032	141415-12-032
CABLE ASM-GENERATOR (GRN)	141415-42-071	141415-42-067	141415-42-074	141415-42-080	141415-42-106	141415-42-104	141415-42-118	141415-42-118
CABLE ASM-GENERATOR GND (BLK)	133566-12-008	133566-12-008	133566-12-008	133566-12-008				
LEVELING SYSTEM POWER CABLE (BLU)	60M 141415-29-023	141415-29-015	141415-29-010	141415-29-023	141415-29-011	141415-29-011	141415-29-011	141415-29-011
LEVELING SYSTEM GND CABLE (BLK)	60M 133566-12-008	133566-12-008	133566-12-008	133566-12-008	133566-12-008	133566-12-008	133566-12-008	133566-12-008
WIRE ASM-INVERTER	401	154845-02-025	154845-02-035		154845-02-031	154845-02-026		
CABLE ASM-STARTER (RED)	141416-32-016	141416-32-010	141416-32-032	141416-32-010	141416-32-010	141416-32-010	141416-32-035	141416-32-035
CABLE ASM (ORG) FROM COACH BATTERY TO INVERTER FUSE							175207-62-005	175207-62-005
CABLE ASM (ORG) FROM INVERTER FUSE TO INVERTER BATT DISCONNECT							175207-62-020	175207-62-032
CABLE ASM (ORG) FROM BATTERY DISCONNECT TO POSITIVE POST ON INVERTER							175207-62-006	175207-62-006
CABLE ASM (BLK) FROM COACH BATTERY TO INVERTER NEGATIVE TERMINAL							175211-01-012	175211-02-026
CABLE ASM-TEMPERATURE							175385-03-000	
CABLE ASM (YEL) JUMPER BETWEEN POSITIVE POSTS ON COACH BATTERY							141417-52-004 141417-51-002 (2) ← 15L	141417-52-004 141417-51-002 (2) ← 15L
CABLE ASM (BLK) JUMPER BETWEEN NEGATIVE POSTS ON COACH BATTERY							133568-12-004 133568-11-002 (2) ← 15L	133568-12-004 133568-11-002 (2) ← 15L
CABLE ASM-INVERTER GROUND (GRN)							136145-01-014	136145-01-014
CABLE ASM-COACH BATTERY FUSE	141416-52-003	141416-52-003	141416-52-003	141416-52-003	141416-52-003	141416-52-003	141416-52-003	141416-52-005
CABLE ASM-CHASSIS BATTERY FUSE	141415-32-003	141415-32-003	141415-32-003	141415-32-003	141415-32-003	141415-32-003	141415-32-003	141415-32-003

- 15L RESIDENTIAL REFRIGERATOR PKG
- 60M HYDRAULIC LEVEL JACKS-AUTO
- 401 INVERTER-DC/AC, 1000 WATT
- 265 CODES/STANDARDS-CSA/CMVSS
- 1B1 CODES/STANDARDS USA

1B1 265
WINNEBAGO COPYRIGHT 2014 WINNEBAGO INDUSTRIES, INC.

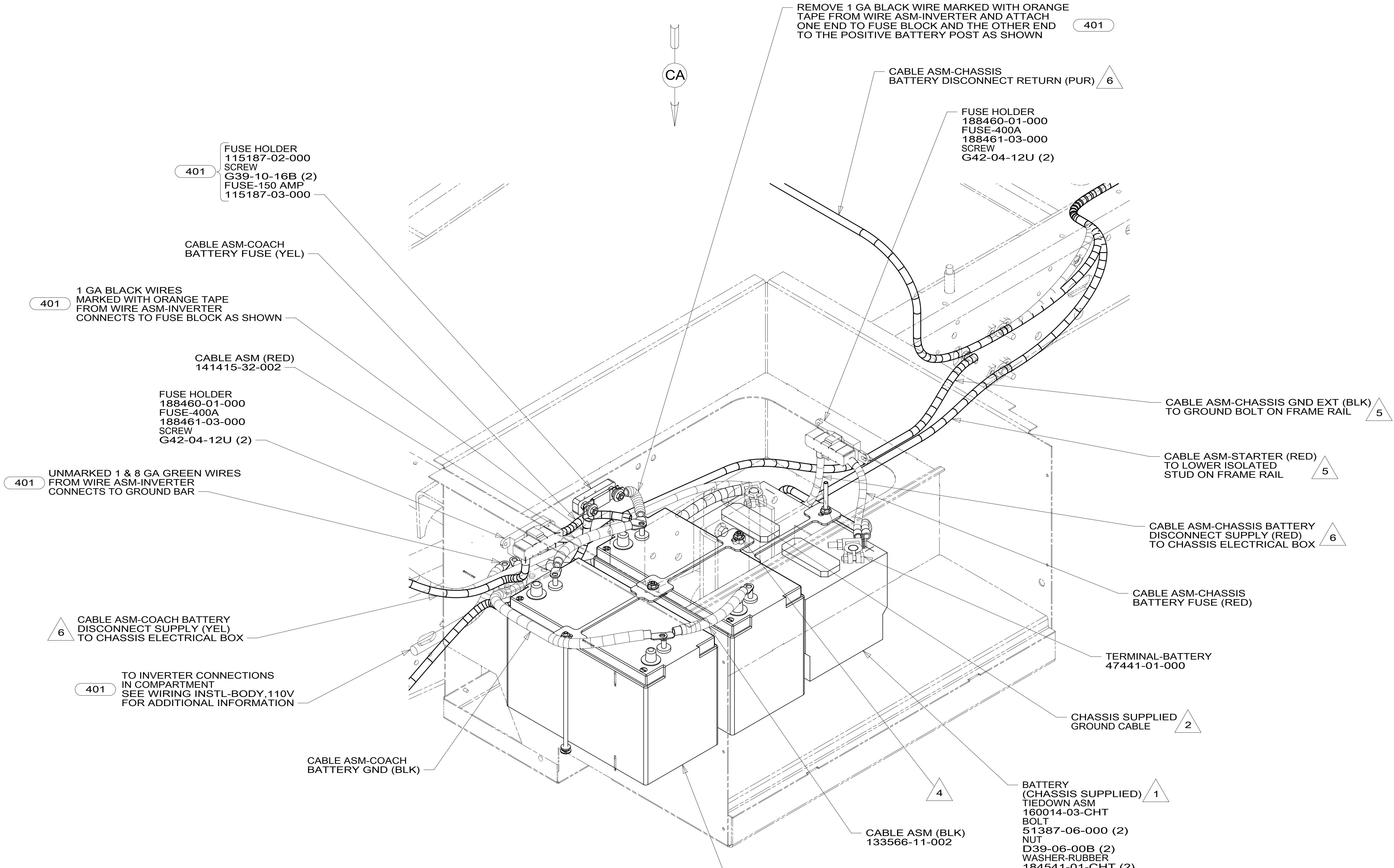
DFTR	ORIG. DATE
CHKR	ALL DIMENSIONS ARE IN MILLIMETERS
P.E.	FIRST USED
M.E.	15 E-SERIES
DSNR	MATERIAL:
UNSPECIFIED TOLERANCES ARE:	
WHOLE DIM (X)	: 3
ONE-PLACE (X.X)	: 1.5
TWO-PLACE (X.XX)	: 0.50
ANGLE	: 1°
THIRD ANGLE PROJECTION	
DO NOT SCALE DRAWING	REFER TO ES0018 FOR FASTENER TIGHTENING GUIDELINES
TITLE: BATTERY INSTL	
SHEET 1 OF 8	PART NO 188336 REV

NOTES:
 2 USED FOR TAB -08.
 1 USED FOR TAB -07.

FOR ELECTRICAL TORQUE SPECIFICATIONS SEE DWG NO. 128783-01-000
 FOR ELECTRICAL CALLOUTS SEE DWG NO. 121339-01-000

188336

REMOVE 1 GA BLACK WIRE MARKED WITH ORANGE TAPE FROM WIRE ASM-INVERTER AND ATTACH ONE END TO FUSE BLOCK AND THE OTHER END TO THE POSITIVE BATTERY POST AS SHOWN



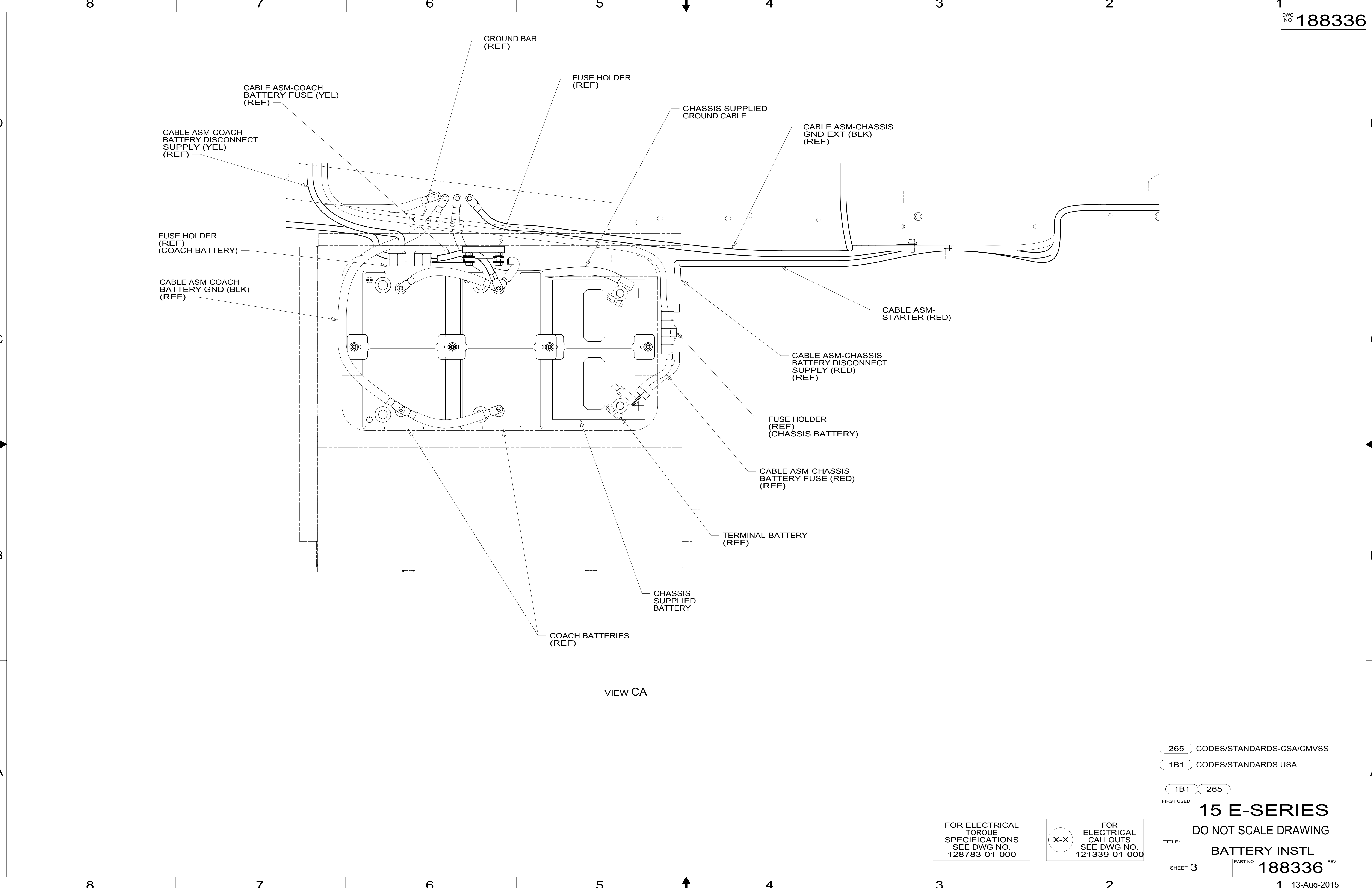
- 6** SEE CHASSIS ELECTRICAL BOX ASM FOR ADDITIONAL INFORMATION.
- 5** SEE WIRING INSTL-CHASSIS FOR ADDITIONAL INFORMATION.
- 4** USE TWO NUTS HERE TO ACCOUNT FOR BATTERY HEIGHT DIFFERENCE.
- 3** SEE LEVELING SYSTEM INSTL FOR ADDITIONAL INFORMATION.
- 2** LOCATE CHASSIS SUPPLIED GROUND CABLE, REDUCE LENGTH TO 700MM AND ADD TERMINAL 8348-01-000 TO THE CUT END.
- 1** SUPPLIED WITH CHASSIS.

- 401** INVERTER-DC/AC, 1000 WATT
- 265** CODES/STANDARDS-CSA/CMVSS
- 1B1** CODES/STANDARDS USA

FIRST USED	
15 E-SERIES	
DO NOT SCALE DRAWING	
TITLE: BATTERY INSTL	
SHEET 2	PART NO 188336 REV

FOR ELECTRICAL TORQUE SPECIFICATIONS SEE DWG NO. 128783-01-000

FOR ELECTRICAL CALLOUTS SEE DWG NO. 121339-01-000



VIEW CA

265 CODES/STANDARDS-CSA/CMVSS

1B1 CODES/STANDARDS USA

1B1 265

FIRST USED **15 E-SERIES**

DO NOT SCALE DRAWING

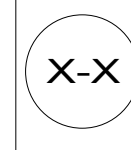
TITLE: **BATTERY INSTL**

SHEET 3 PART NO **188336** REV

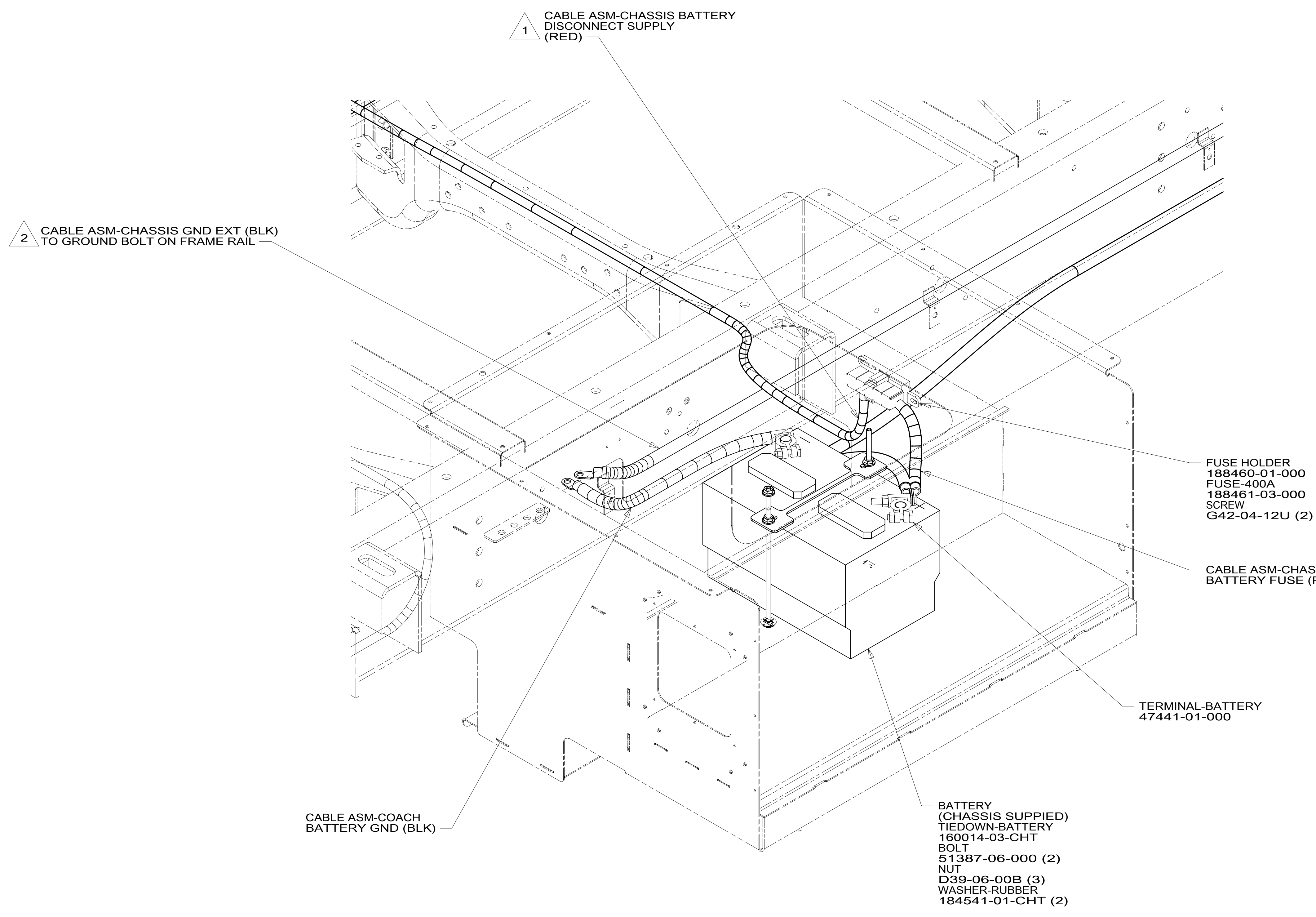
1 13-Aug-2015

FOR ELECTRICAL TORQUE SPECIFICATIONS SEE DWG NO. 128783-01-000

FOR ELECTRICAL CALLOUTS SEE DWG NO. 121339-01-000



188336



2 CABLE ASM-CHASSIS GND EXT (BLK)
TO GROUND BOLT ON FRAME RAIL

1 CABLE ASM-CHASSIS BATTERY
DISCONNECT SUPPLY
(RED)

FUSE HOLDER
188460-01-000
FUSE-400A
188461-03-000
SCREW
G42-04-12U (2)

CABLE ASM-CHASSIS
BATTERY FUSE (RED)

TERMINAL-BATTERY
47441-01-000

BATTERY
(CHASSIS SUPPLIED)
TIEDOWN-BATTERY
160014-03-CHT
BOLT
51387-06-000 (2)
NUT
D39-06-00B (3)
WASHER-RUBBER
184541-01-CHT (2)

CABLE ASM-COACH
BATTERY GND (BLK)

265 CODES/STANDARDS-CSA/CMVSS

1B1 CODES/STANDARDS USA

1B1 265

FIRST USED
15 E-SERIES

DO NOT SCALE DRAWING

TITLE:
BATTERY INSTL

SHEET 4 PART NO **188336** REV

1 13-Aug-2015

FOR ELECTRICAL
TORQUE
SPECIFICATIONS
SEE DWG NO.
128783-01-000

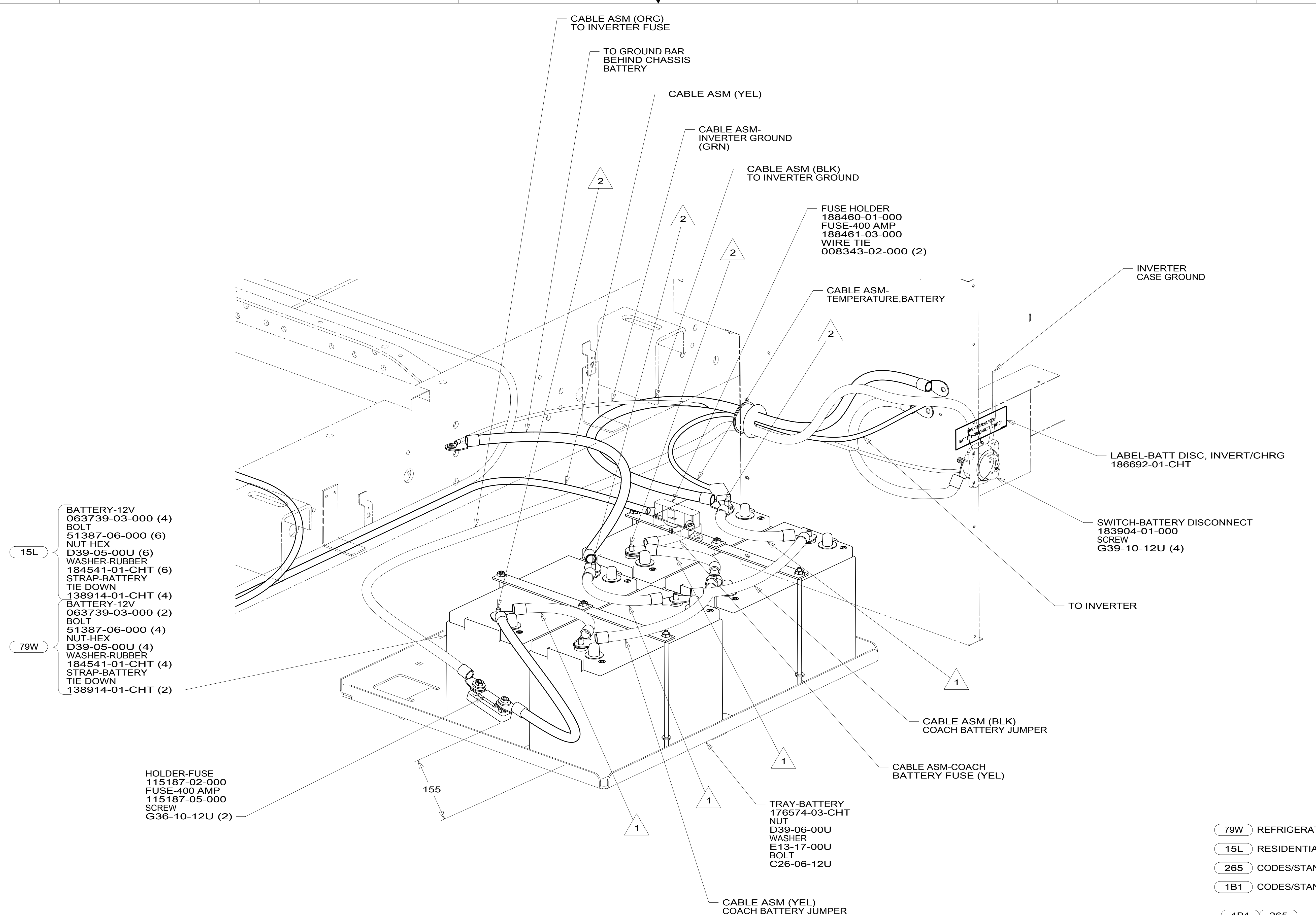
FOR ELECTRICAL
CALLOUTS
SEE DWG NO.
121339-01-000

2 SEE WIRING INSTL-CHASSIS FOR ADDITIONAL INFORMATION.

1 SEE CHASSIS ELECTRICAL BOX ASM FOR ADDITIONAL INFORMATION.

NOTES:

188336



- 15L BATTERY-12V
063739-03-000 (4)
BOLT
51387-06-000 (6)
NUT-HEX
D39-05-00U (6)
WASHER-RUBBER
184541-01-CHT (6)
STRAP-BATTERY
TIE DOWN
138914-01-CHT (4)
- 79W BATTERY-12V
063739-03-000 (2)
BOLT
51387-06-000 (4)
NUT-HEX
D39-05-00U (4)
WASHER-RUBBER
184541-01-CHT (4)
STRAP-BATTERY
TIE DOWN
138914-01-CHT (2)

- HOLDER-FUSE
115187-02-000
FUSE-400 AMP
115187-05-000
SCREW
G36-10-12U (2)

- TRAY-BATTERY
176574-03-CHT
NUT
D39-06-00U
WASHER
E13-17-00U
BOLT
C26-06-12U

- 79W REFRIGERATOR-4 DOOR
- 15L RESIDENTIAL REFRIGERATOR PKG
- 265 CODES/STANDARDS-CSA/CMVSS
- 1B1 CODES/STANDARDS USA

2 CONNECT TO OUTER BATTERY WITH OPTION 79W
OPTION 15L SHOWN.

1 CABLE NOT USED WITH OPTION 79W

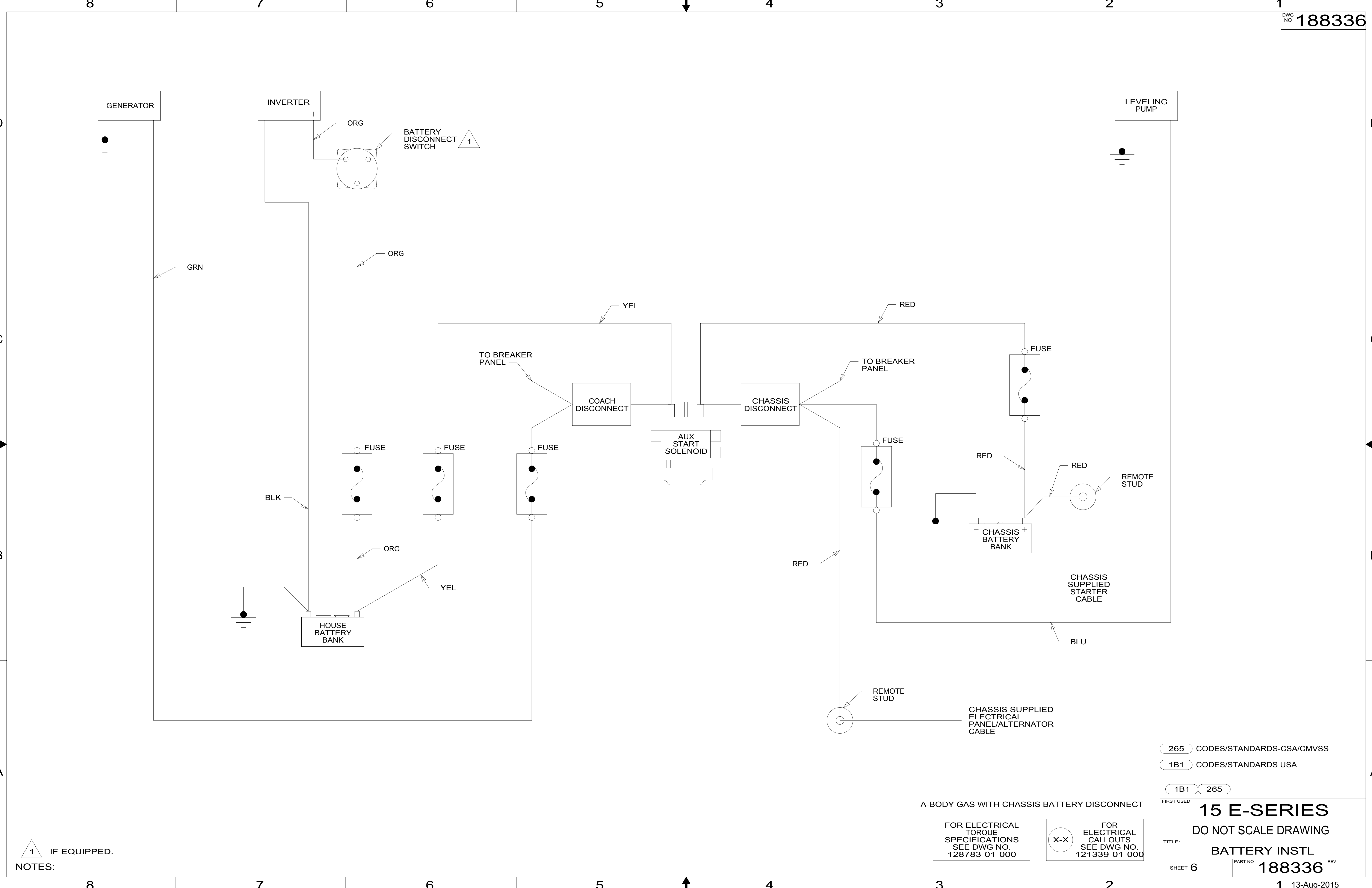
NOTES:

FOR ELECTRICAL
TORQUE
SPECIFICATIONS
SEE DWG NO.
128783-01-000

X-X
FOR
ELECTRICAL
CALLOUTS
SEE DWG NO.
121339-01-000

FIRST USED	
15 E-SERIES	
DO NOT SCALE DRAWING	
TITLE: BATTERY INSTL	
SHEET 5	PART NO 188336 REV
1 13-Aug-2015	

188336



NOTES:
 1 IF EQUIPPED.

A-BODY GAS WITH CHASSIS BATTERY DISCONNECT

FOR ELECTRICAL TORQUE SPECIFICATIONS SEE DWG NO. 128783-01-000

FOR ELECTRICAL CALLOUTS SEE DWG NO. 121339-01-000

265 CODES/STANDARDS-CSA/CMVSS

1B1 CODES/STANDARDS USA

1B1 265

FIRST USED **15 E-SERIES**

DO NOT SCALE DRAWING

TITLE: **BATTERY INSTL**

SHEET 6 PART NO **188336** REV

188336

8 7 6 5 4 3 2 1

8 7 6 5 4 3 2 1

D C B A

D C B A

GENERATOR

LEVELING PUMP

GRN

YEL

RED

TO BREAKER PANEL

TO BREAKER PANEL

COACH DISCONNECT

AUX START SOLENOID

FUSE

FUSE

FUSE

FUSE

RED

CHASSIS SUPPLIED STARTER CABLE

HOUSE BATTERY BANK

CHASSIS BATTERY BANK

CHASSIS SUPPLIED ELECTRICAL PANEL/ALTERNATOR CABLE

265 CODES/STANDARDS-CSA/CMVSS

1B1 CODES/STANDARDS USA

1B1 265

A-BODY GAS WITHOUT CHASSIS BATTERY DISCONNECT

FOR ELECTRICAL TORQUE SPECIFICATIONS SEE DWG NO. 128783-01-000

FOR ELECTRICAL CALLOUTS SEE DWG NO. 121339-01-000

FIRST USED 15 E-SERIES

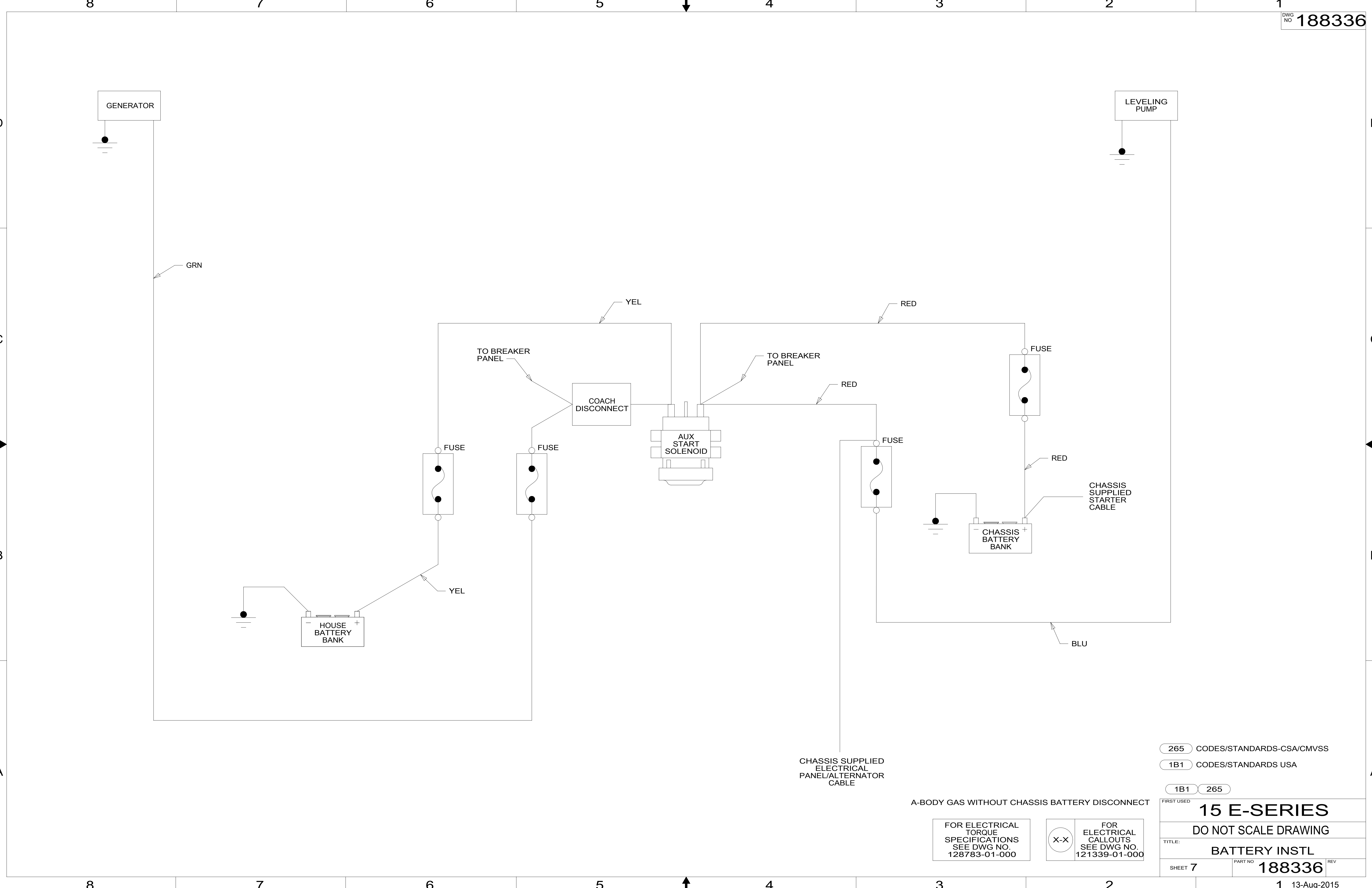
DO NOT SCALE DRAWING

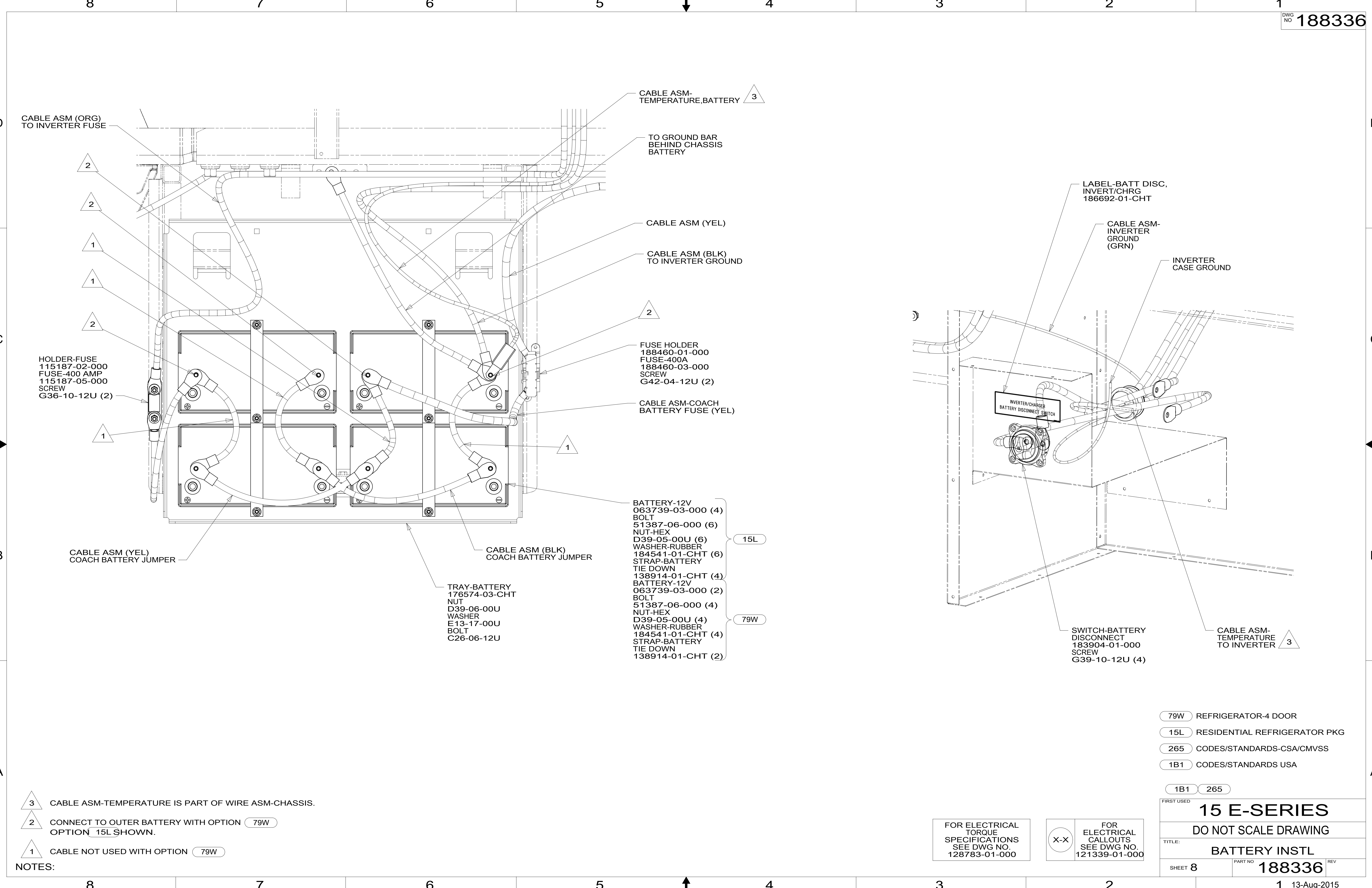
TITLE: BATTERY INSTL

SHEET 7 PART NO 188336 REV

1 13-Aug-2015

188336





CABLE ASM (ORG) TO INVERTER FUSE

CABLE ASM (YEL) COACH BATTERY JUMPER

HOLDER-FUSE
115187-02-000
FUSE-400 AMP
115187-05-000
SCREW
G36-10-12U (2)

CABLE ASM (YEL)
CABLE ASM (BLK) TO INVERTER GROUND

FUSE HOLDER
188460-01-000
FUSE-400A
188460-03-000
SCREW
G42-04-12U (2)

CABLE ASM-COACH BATTERY FUSE (YEL)

TRAY-BATTERY
176574-03-CHT
NUT
D39-06-00U
WASHER
E13-17-00U
BOLT
C26-06-12U

BATTERY-12V
063739-03-000 (4)
BOLT
51387-06-000 (6)
NUT-HEX
D39-05-00U (6)
WASHER-RUBBER
184541-01-CHT (6)
STRAP-BATTERY TIE DOWN
138914-01-CHT (4)
BATTERY-12V
063739-03-000 (2)
BOLT
51387-06-000 (4)
NUT-HEX
D39-05-00U (4)
WASHER-RUBBER
184541-01-CHT (4)
STRAP-BATTERY TIE DOWN
138914-01-CHT (2)

CABLE ASM-TEMPERATURE, BATTERY

TO GROUND BAR BEHIND CHASSIS BATTERY

CABLE ASM (YEL)

CABLE ASM (BLK) TO INVERTER GROUND

FUSE HOLDER
188460-01-000
FUSE-400A
188460-03-000
SCREW
G42-04-12U (2)

CABLE ASM-COACH BATTERY FUSE (YEL)

BATTERY-12V
063739-03-000 (4)
BOLT
51387-06-000 (6)
NUT-HEX
D39-05-00U (6)
WASHER-RUBBER
184541-01-CHT (6)
STRAP-BATTERY TIE DOWN
138914-01-CHT (4)
BATTERY-12V
063739-03-000 (2)
BOLT
51387-06-000 (4)
NUT-HEX
D39-05-00U (4)
WASHER-RUBBER
184541-01-CHT (4)
STRAP-BATTERY TIE DOWN
138914-01-CHT (2)

LABEL-BATT DISC, INVERT/CHRG
186692-01-CHT

CABLE ASM-INVERTER GROUND (GRN)

INVERTER CASE GROUND

INVERTER/CHARGER BATTERY DISCONNECT SWITCH

SWITCH-BATTERY DISCONNECT
183904-01-000
SCREW
G39-10-12U (4)

CABLE ASM-TEMPERATURE TO INVERTER

- 79W REFRIGERATOR-4 DOOR
- 15L RESIDENTIAL REFRIGERATOR PKG
- 265 CODES/STANDARDS-CSA/CMVSS
- 1B1 CODES/STANDARDS USA

1B1	265
FIRST USED	
15 E-SERIES	
DO NOT SCALE DRAWING	
TITLE: BATTERY INSTL	
SHEET 8	PART NO 188336 REV
1 13-Aug-2015	

FOR ELECTRICAL TORQUE SPECIFICATIONS SEE DWG NO. 128783-01-000

FOR ELECTRICAL CALLOUTS SEE DWG NO. 121339-01-000

NOTES:

3 CABLE ASM-TEMPERATURE IS PART OF WIRE ASM-CHASSIS.

2 CONNECT TO OUTER BATTERY WITH OPTION 79W OPTION 15L SHOWN.

1 CABLE NOT USED WITH OPTION 79W

188336