



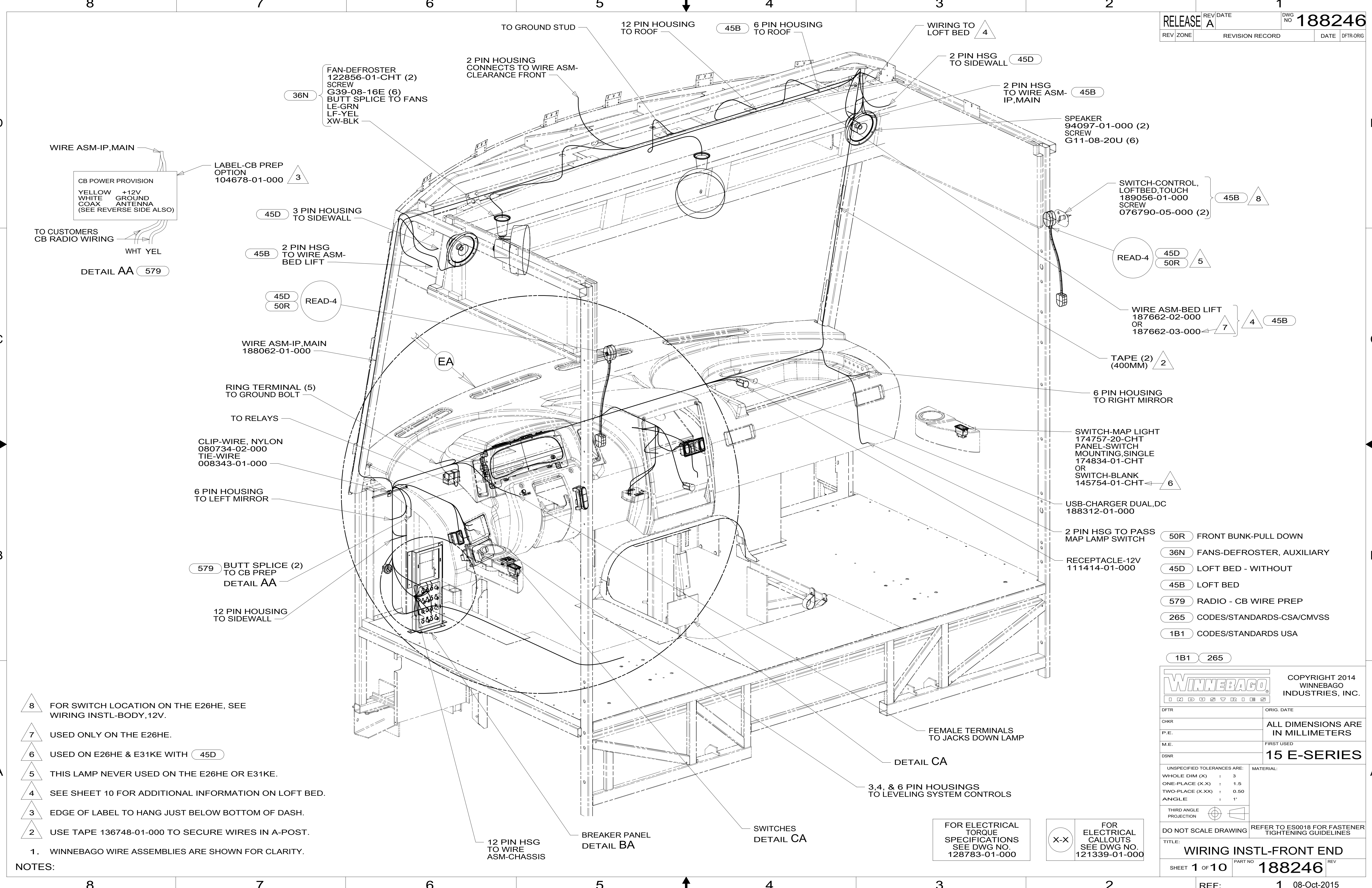
DANGER

Danger of electrical shock, burns or death. Always remove all power sources before attempting any repair, service or diagnostic work. Power can be present from shore power, generator, inverter or battery. All power sources must be disabled and secured before performing any service.



CAUTION

If you lack the skills, tools or equipment to perform diagnostic or repair work leave such work to an authorized Winnebago Industries dealer or other qualified shop.



- 8 FOR SWITCH LOCATION ON THE E26HE, SEE WIRING INSTL-BODY, 12V.
- 7 USED ONLY ON THE E26HE.
- 6 USED ON E26HE & E31KE WITH 45D
- 5 THIS LAMP NEVER USED ON THE E26HE OR E31KE.
- 4 SEE SHEET 10 FOR ADDITIONAL INFORMATION ON LOFT BED.
- 3 EDGE OF LABEL TO HANG JUST BELOW BOTTOM OF DASH.
- 2 USE TAPE 136748-01-000 TO SECURE WIRES IN A-POST.

NOTES:
 1. WINNEBAGO WIRE ASSEMBLIES ARE SHOWN FOR CLARITY.

- 50R FRONT BUNK-PULL DOWN
- 36N FANS-DEFROSTER, AUXILIARY
- 45D LOFT BED - WITHOUT
- 45B LOFT BED
- 579 RADIO - CB WIRE PREP
- 265 CODES/STANDARDS-CSA/CMVSS
- 1B1 CODES/STANDARDS USA

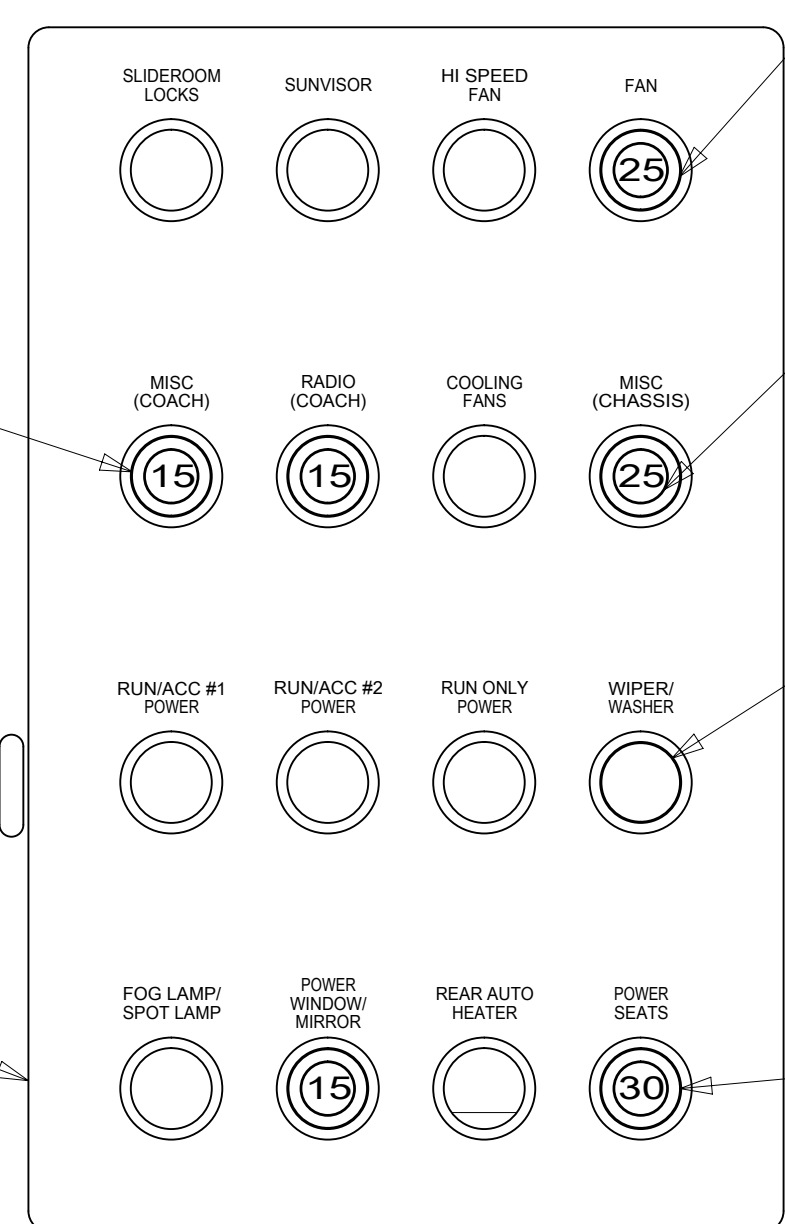
WINNEBAGO COPYRIGHT 2014 WINNEBAGO INDUSTRIES, INC.

DFTR	ORIG. DATE
CHKR	ALL DIMENSIONS ARE IN MILLIMETERS
P.E.	FIRST USED
M.E.	15 E-SERIES
DSNR	MATERIAL:
UNSPECIFIED TOLERANCES ARE:	
WHOLE DIM (X)	: 3
ONE-PLACE (X.X)	: 1.5
TWO-PLACE (X.XX)	: 0.50
ANGLE	: 1°
THIRD ANGLE PROJECTION	
DO NOT SCALE DRAWING	REFER TO ES0018 FOR FASTENER TIGHTENING GUIDELINES
TITLE: WIRING INSTL-FRONT END	
SHEET 1 OF 10	PART NO 188246 REV
REF:	1 08-Oct-2015

FOR ELECTRICAL TORQUE SPECIFICATIONS SEE DWG NO. 128783-01-000

X-X FOR ELECTRICAL CALLOUTS SEE DWG NO. 121339-01-000

188246



CIRCUIT BREAKER-15 AMP
93654-02-000 (3)
SCREW
G52-06-05B (3)

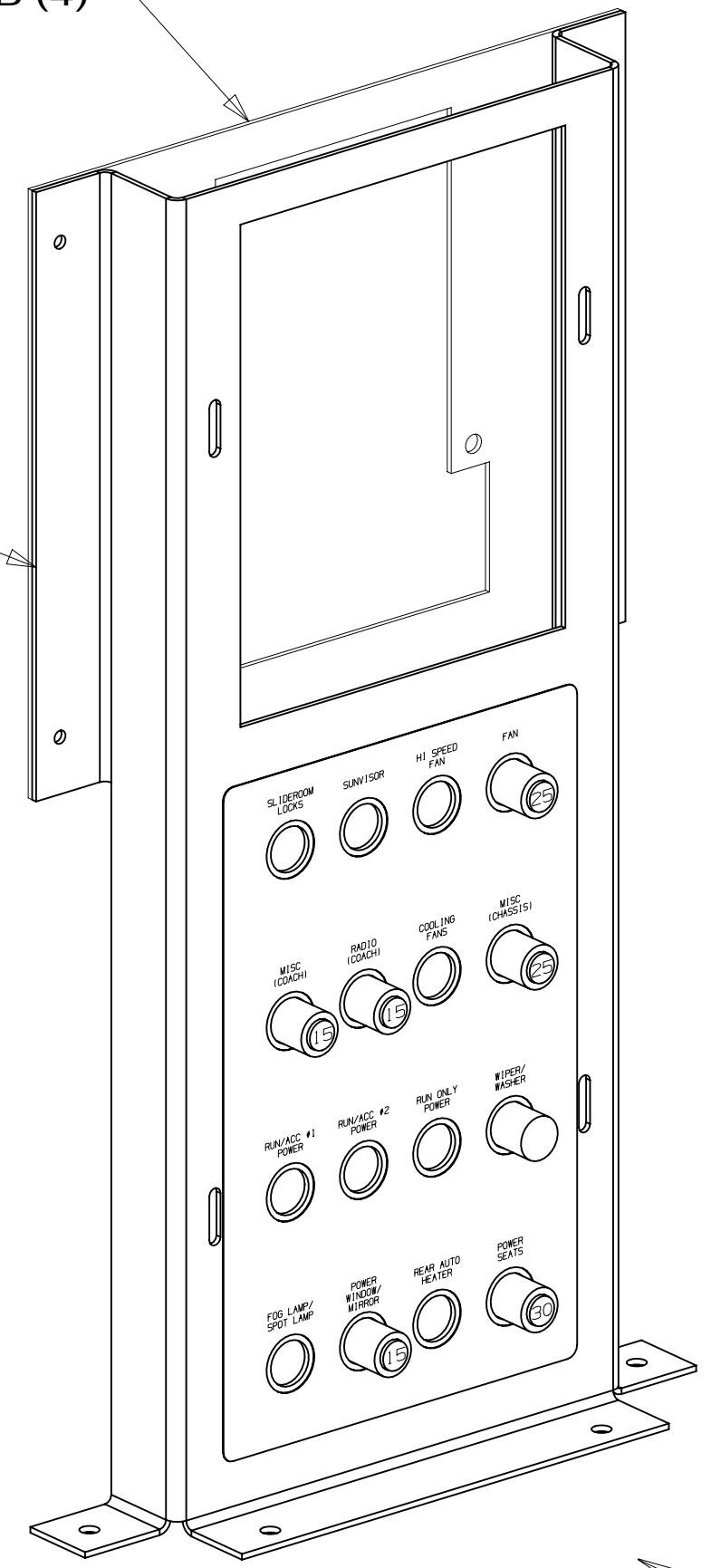
CIRCUIT BREAKER-25 AMP
93655-01-000
SCREW
G52-06-04B
G52-06-05B
LOCKWASHER
OME02B-04-071

CIRCUIT BREAKER-25 AMP
93655-01-000
SCREW
G52-06-04B
G52-06-05B
LOCKWASHER
OME02B-04-071

BREAKER-SELF RESET, 20 AMP
182283-01-000
SCREW
G52-06-04B
WASHER-LOCK
OME02B-04-071

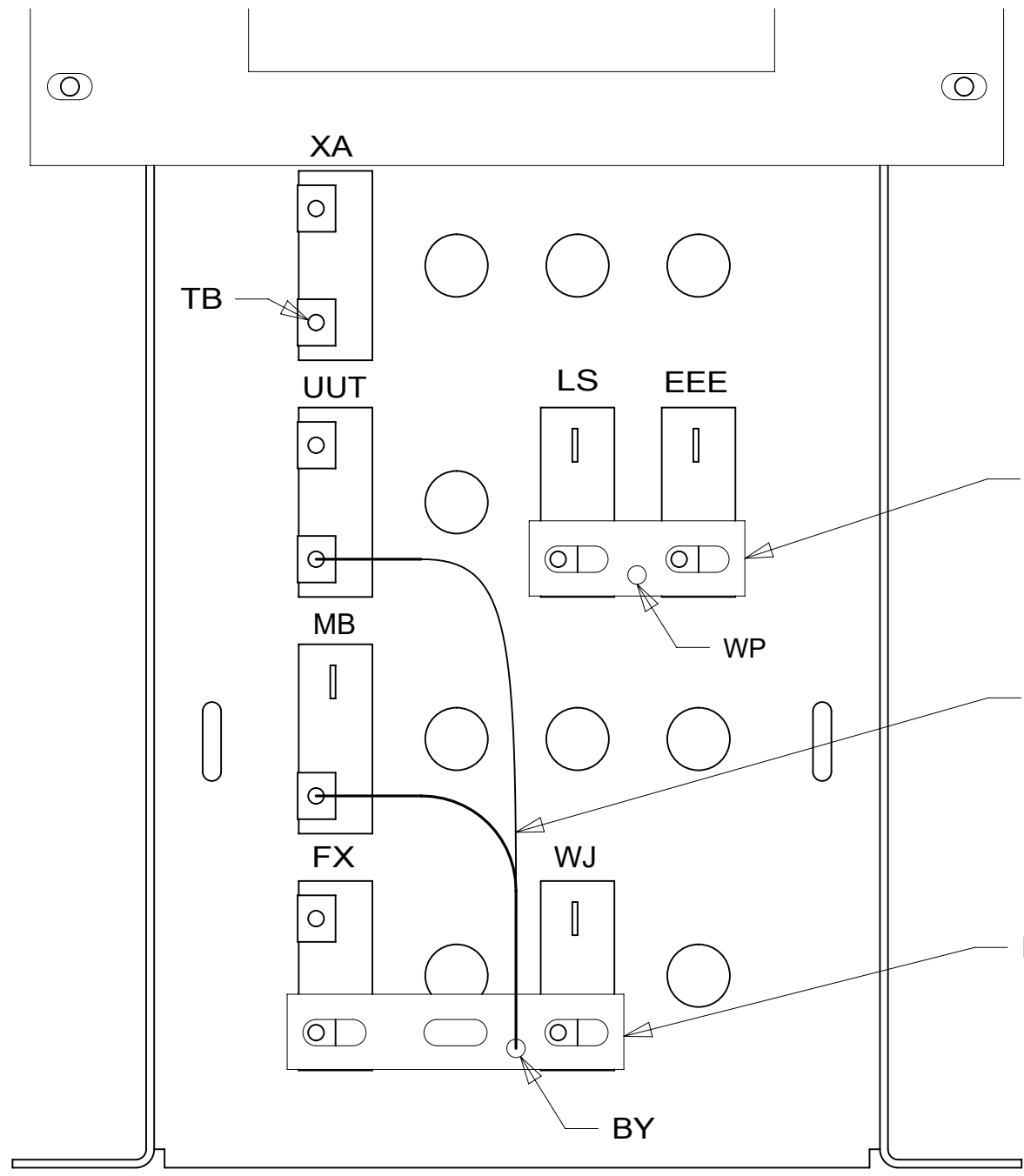
CIRCUIT BREAKER-30 AMP
93655-02-000
SCREW
G52-06-04B
G52-06-05B

LABEL-CIRCUIT BREAKER
93236-66-000



BRACKET-FUSE PANEL
149690-02-CHT
SCREW
000G11-10-08B (4)

BRACKET-CIRCUIT BREAKER
149689-01-CHT
SCREW
000G11-10-08B (4)



BUSS BAR
141744-01-000

BUSS BAR
141744-02-000 64Q

- 64Q SEAT PED-6-WAY POWER DRIVER
- 265 CODES/STANDARDS-CSA/CMVSS
- 1B1 CODES/STANDARDS USA

FIRST USED	
15 E-SERIES	
DO NOT SCALE DRAWING	
TITLE: WIRING INSTL-FRONT END	
SHEET 2	PART NO 188246 REV

FOR ELECTRICAL TORQUE SPECIFICATIONS SEE DWG NO. 128783-01-000

FOR ELECTRICAL CALLOUTS SEE DWG NO. 121339-01-000

NOTES:
1 ALL CIRCUITS ARE IN WIRE ASM-IP,MAIN.

188246

60M 3 2 LIGHT ASM-INDICATOR,RED
190682-01-000
LABEL-JACKS DOWN
133533-01-CHT

RELAY
63912-02-000 (2)
SCREW
G11-08-08B (2)

CLUSTER
CHASSIS
SUPPLIED

RADIO
DETAIL GA
OR
DETAIL HA

SWITCHES
VIEW DA

12V RECEPTACLE
VIEW DA

SWITCHER-
VIDEO CAMERA
DETAIL GA

RECEIVER-
SATELLITE
RADIO
DETAIL GA

INFORMATION SWITCH
BEZEL-SWITCH
172173-01-CHT
CLAMP-BEZEL
172175-01-CHT
SCREW
G11-08-08U (2)

4 WIRE ASM-EXTENSION
192231-01-000
5 WIRE ASM-EXTENSION
192238-01-000

SEE LEVELING
SYSTEM INSTL

1 HEADLAMP
SWITCH
VIEW DA

STUD-FEED THRU
118499-01-000

PLATE ASM-SWITCH,MIRROR
118662-18-CHT
WASHER
E13-10-00U (2)
NUT
D65-08-00U (2)
SWITCH-MIRROR
88246-01-000
SPACER-
SWITCH,MIRROR
184039-01-CHT

SWITCH-MIRROR HEAT
174757-25-CHT
PANEL-SWITCH
MOUNTING,SINGLE
174834-01-CHT

DA

- NOTES:
- 5 THIS WIRE ASM USED ON E26HE, E31BE, & E31KE FOR THE BATTERY BOOST SWITCH.
 - 4 THIS WIRE ASM USED ON E27N, E30T, E35B, E35F, & E36Y FOR THE BATTERY BOOST SWITCH.
 - 3 WIRING FROM LEVELING SYSTEM. SEE LEVELING SYSTEM INSTL FOR ADDITIONAL INFORMATION.
 - 2 CONNECT POSITIVE WIRE TO TERMINAL MARKED WITH "RED".
 - 1 CHASSIS SUPPLIED

- 60M HYDRAULIC LEVEL JACKS-AUTO
- 265 CODES/STANDARDS-CSA/CMVSS
- 1B1 CODES/STANDARDS USA

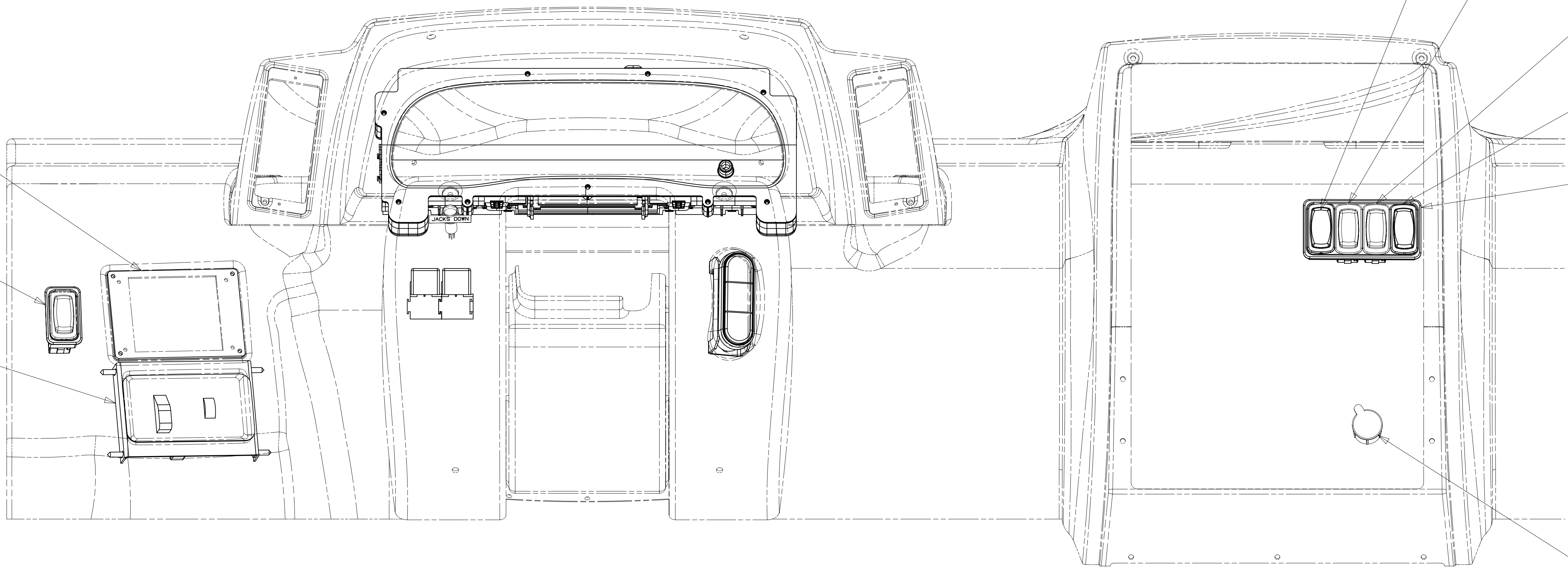
FIRST USED	
15 E-SERIES	
DO NOT SCALE DRAWING	
TITLE: WIRING INSTL-FRONT END	
SHEET 3	PART NO 188246 REV
1 08-Oct-2015	

FOR ELECTRICAL
TORQUE
SPECIFICATIONS
SEE DWG NO.
128783-01-000

FOR
ELECTRICAL
CALLOUTS
SEE DWG NO.
121339-01-000

DETAIL CA

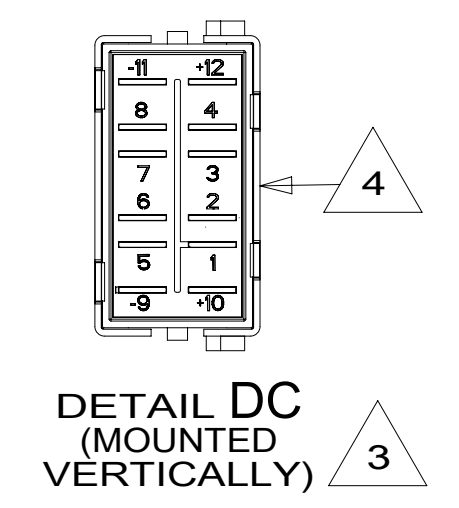
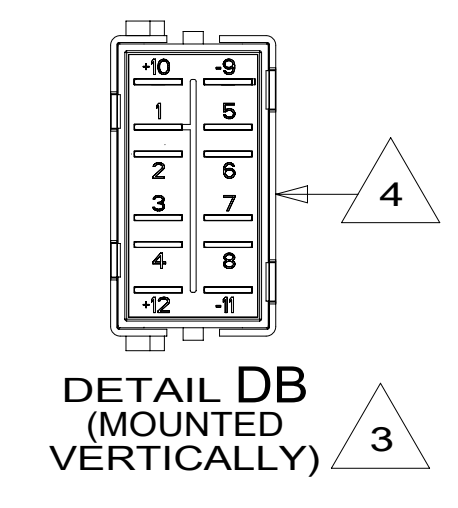
188246



VIEW DA

- 5 WITHOUT 36N
- 4 WITH SWITCH INSTALLED THIS SIDE OF SWITCH WILL FACE LEFT SIDEWALL.
- 3 DETAIL IS LOOKING AT SWITCH FROM THE BACK SIDE OF SWITCH AS ITS INSTALLED.
- 2 SEE DETAIL DC FOR ORIENTATION.
- 1 SEE DETAIL DB FOR ORIENTATION.

NOTES:



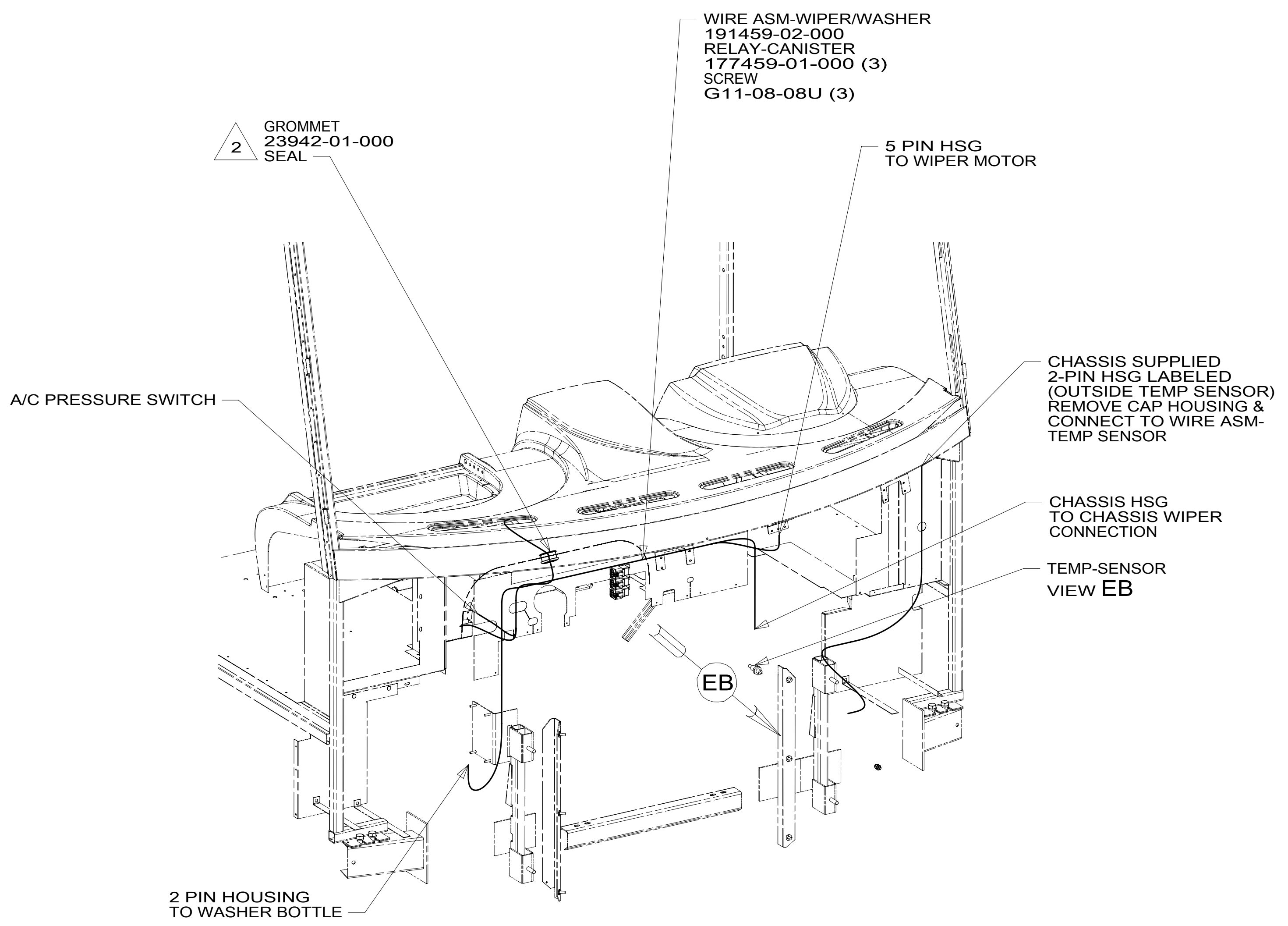
- 36N FANS-DEFROSTER, AUXILIARY
- 265 CODES/STANDARDS-CSA/CMVSS
- 1B1 CODES/STANDARDS USA

FIRST USED	
15 E-SERIES	
DO NOT SCALE DRAWING	
TITLE: WIRING INSTL-FRONT END	
SHEET 4	PART NO. 188246 REV
1 08-Oct-2015	

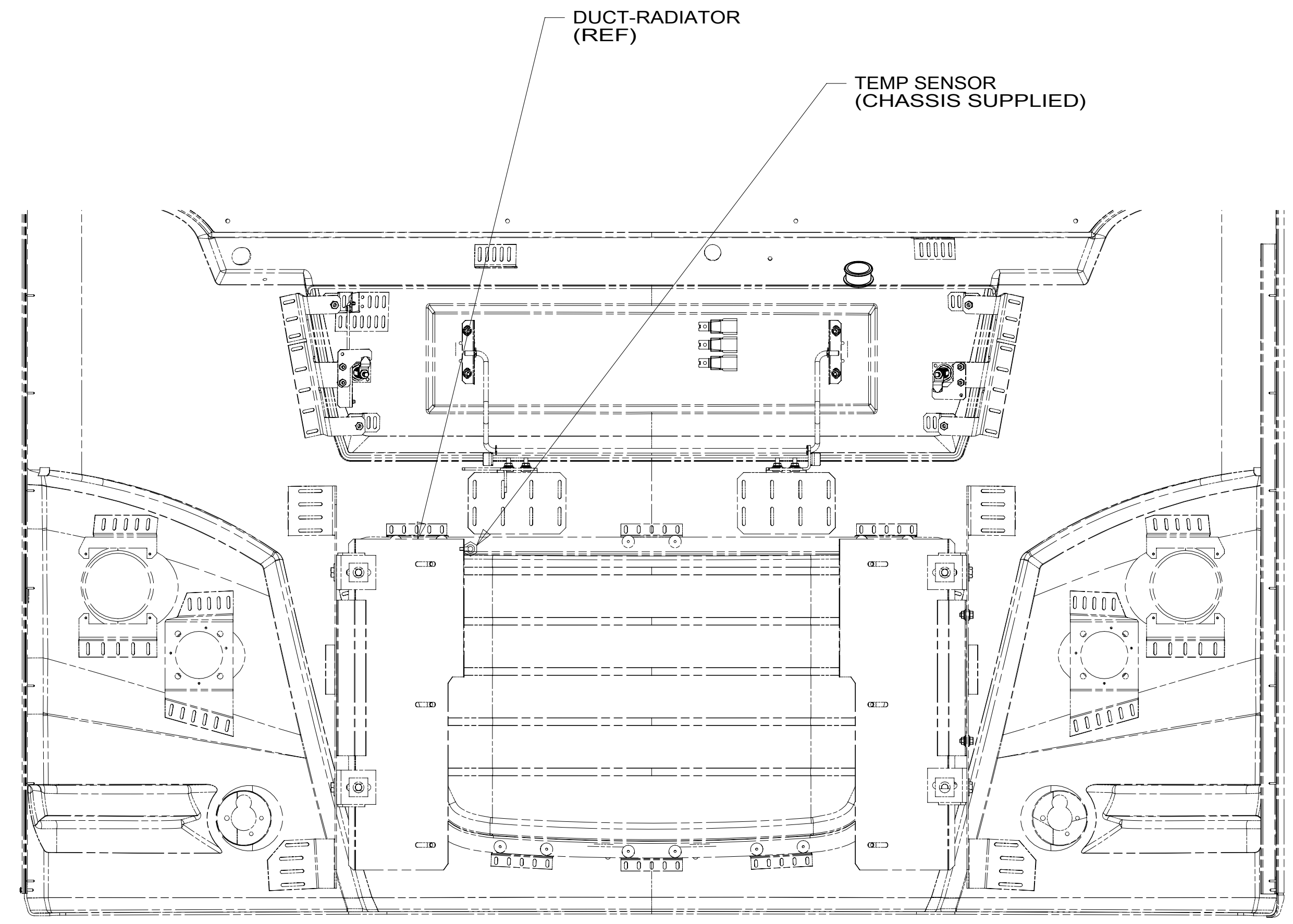
FOR ELECTRICAL TORQUE SPECIFICATIONS SEE DWG NO. 128783-01-000

X-X FOR ELECTRICAL CALLOUTS SEE DWG NO. 121339-01-000

188246



DETAIL EA



VIEW EB

- 2 ROUTE WIRES THROUGH HOLE IN STEEL.
- GATHER ALL EXCESS WIRE AFTER MAKING ALL CONNECTIONS. BUNDLE AND SECURE WITH WIRE TIE 8343-01-000 OR 93147-01-000.

NOTES:

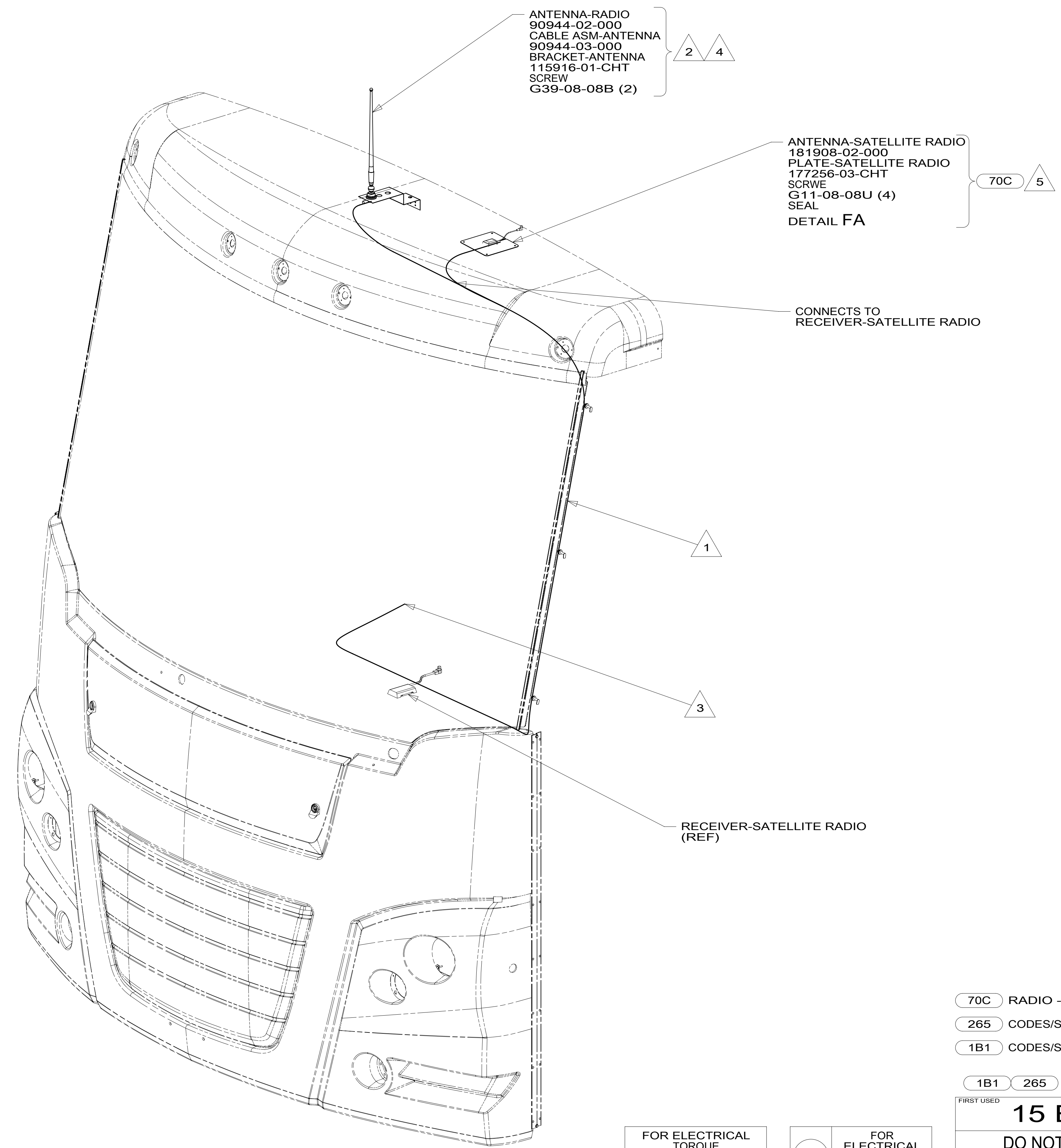
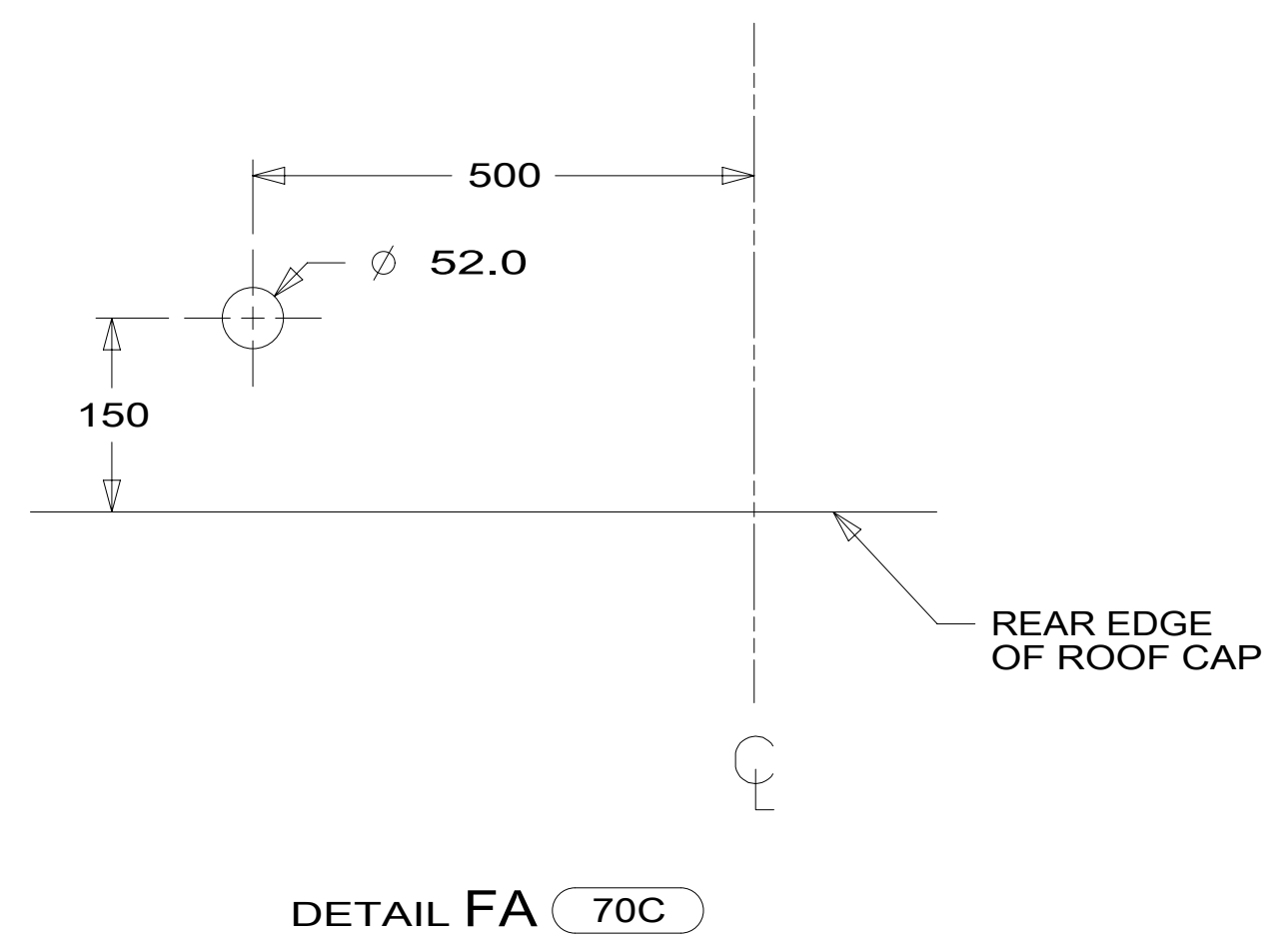
- 265 CODES/STANDARDS-CSA/CMVSS
- 1B1 CODES/STANDARDS USA
- 1B1 265

FOR ELECTRICAL TORQUE SPECIFICATIONS SEE DWG NO. 128783-01-000

FOR ELECTRICAL CALLOUTS SEE DWG NO. 121339-01-000

FIRST USED	
15 E-SERIES	
DO NOT SCALE DRAWING	
TITLE: WIRING INSTL-FRONT END	
SHEET 5	PART NO 188246 REV
1 08-Oct-2015	

188246



- NOTES:
- 5 MOUNT ANTENNA SUCH THAT BASE IS SQUARE W/REAR OF ROOF CAP & HOLE IS DIRECTLY OVER HOLE IN FIBERGLASS. SEAL HOLE IN ROOF CAP, BASE AT SCREWS.
 - 4 USE HOLE IN BRACKET AS GUIDE TO DRILL 13 MM DIAMETER HOLE IN FIBERGLASS.
 - 3 TO RADIO.
 - 2 SEAL AROUND ANTENNA BASE.
 - 1 ROUTE CABLES ALONG A-POST, UNDER TRIM COVER.

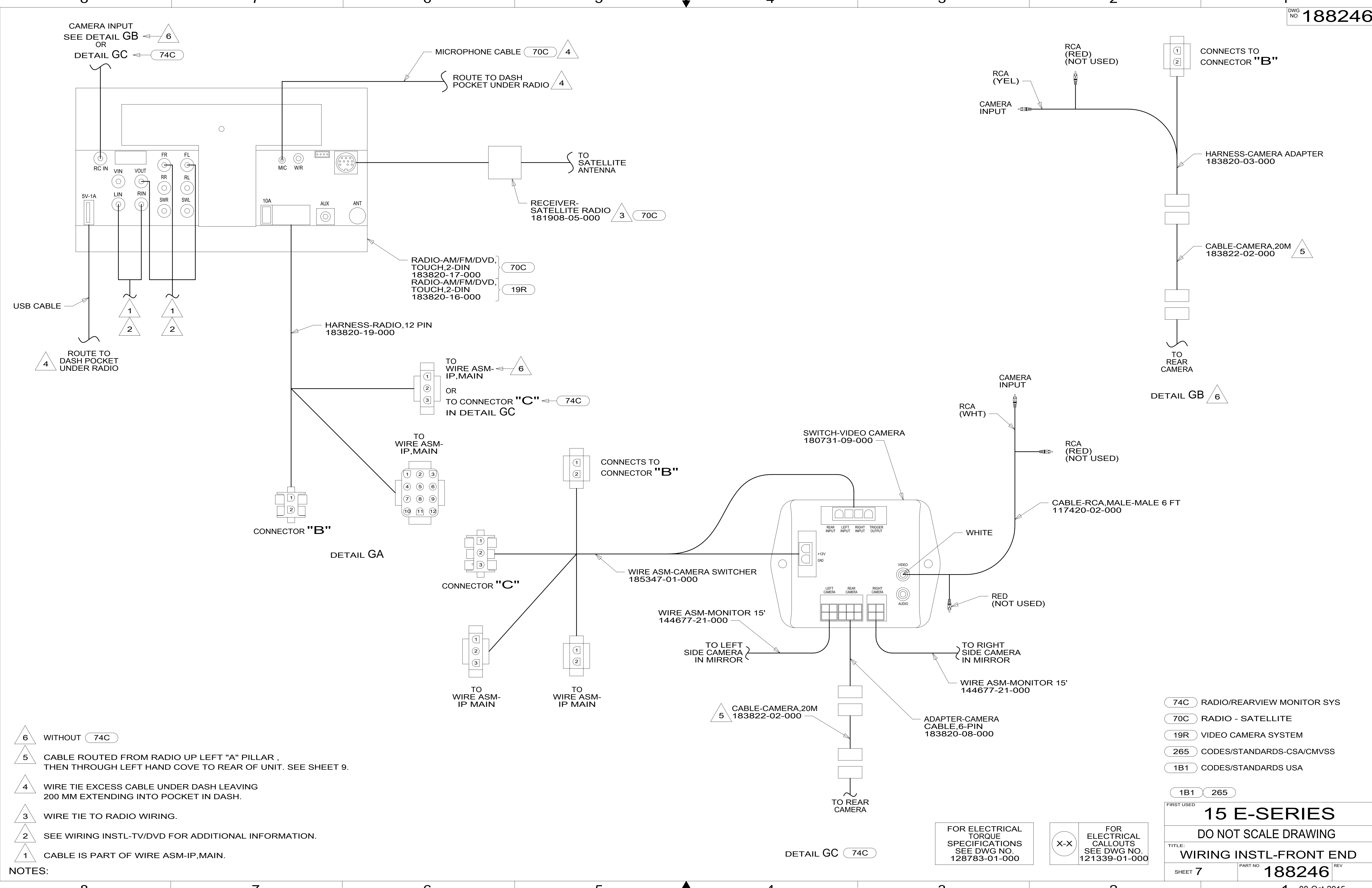
- 70C RADIO - SATELLITE
- 265 CODES/STANDARDS-CSA/CMVSS
- 1B1 CODES/STANDARDS USA

FIRST USED	
15 E-SERIES	
DO NOT SCALE DRAWING	
TITLE: WIRING INSTL-FRONT END	
SHEET 6	PART NO 188246 REV

FOR ELECTRICAL TORQUE SPECIFICATIONS SEE DWG NO. 128783-01-000

FOR ELECTRICAL CALLOUTS SEE DWG NO. 121339-01-000

188246



- NOTES:
- 6 WITHOUT 74C
 - 5 CABLE ROUTED FROM RADIO UP LEFT "A" PILLAR, THEN THROUGH LEFT HAND COVE TO REAR OF UNIT. SEE SHEET 9.
 - 4 WIRE TIE EXCESS CABLE UNDER DASH LEAVING 200 MM EXTENDING INTO POCKET IN DASH.
 - 3 WIRE TIE TO RADIO WIRING.
 - 2 SEE WIRING INSTL-TV/DVD FOR ADDITIONAL INFORMATION.
 - 1 CABLE IS PART OF WIRE ASM-IP,MAIN.

FOR ELECTRICAL TORQUE SPECIFICATIONS SEE DWG NO. 128783-01-000

FOR ELECTRICAL CALLOUTS SEE DWG NO. 121339-01-000

74C	RADIO/REARVIEW MONITOR SYS
70C	RADIO - SATELLITE
19R	VIDEO CAMERA SYSTEM
265	CODES/STANDARDS-CSA/CMVSS
1B1	CODES/STANDARDS USA
1B1	265
FIRST USED	
15 E-SERIES	
DO NOT SCALE DRAWING	
TITLE: WIRING INSTL-FRONT END	
SHEET 7	PART NO 188246 REV
1 08-Oct-2015	

*188246 *A

THIS SHEET NOT USED

FIRST USED	15 E-SERIES	
DO NOT SCALE DRAWING		
TITLE:	WIRING INSTL-FRONT END	
SHEET 8	PART NO 188246	REV

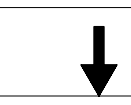
188246

8

7

6

5

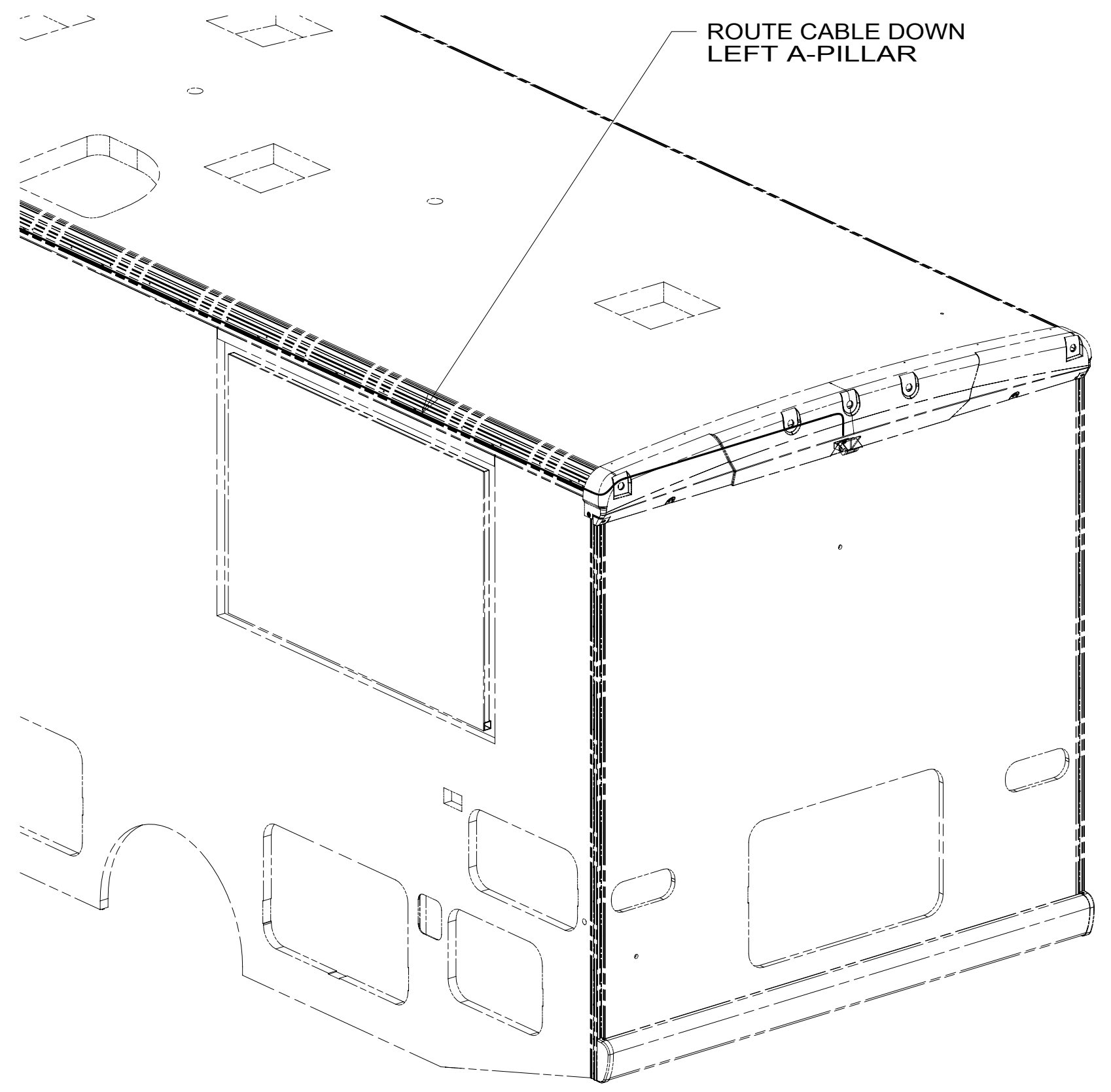


4

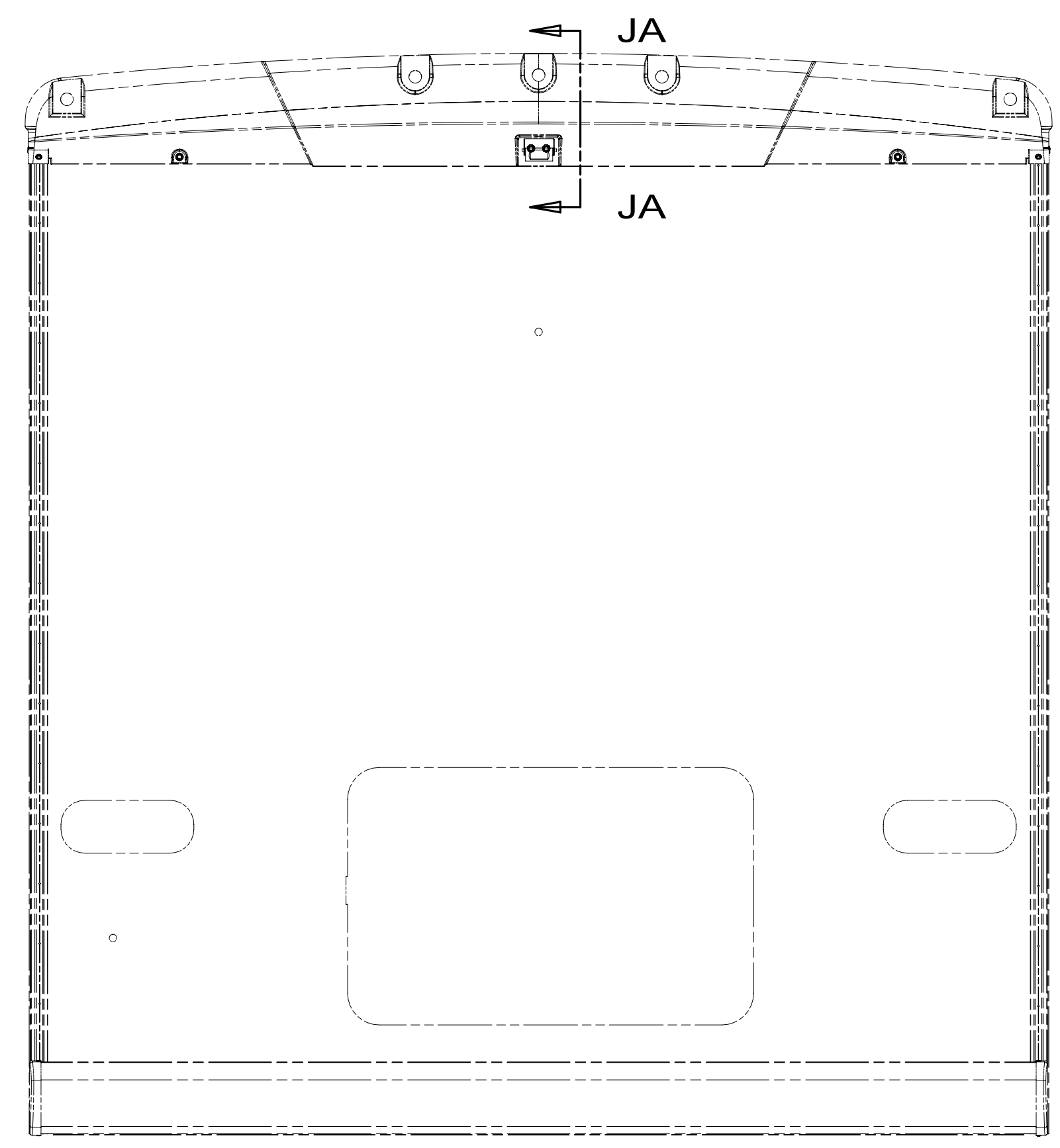
3

2

1

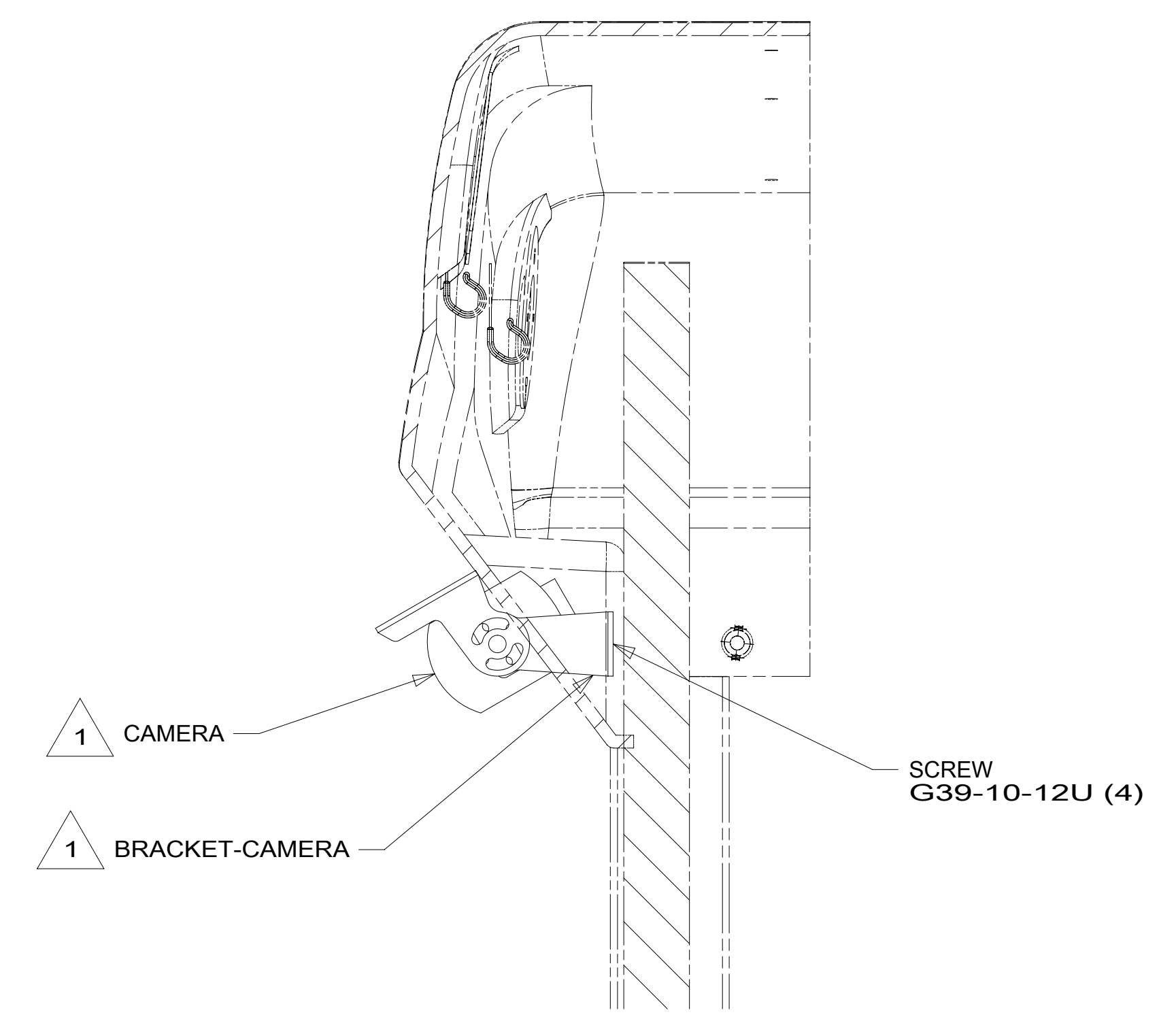


ROUTE CABLE DOWN
LEFT A-PILLAR



JA

JA



1 CAMERA

1 BRACKET-CAMERA

SCREW
G39-10-12U (4)

SECTION JA-JA

D

D

C

C

B

B

A

A

1 PARTS SUPPLIED WITH CAMERA KIT P/N 183822-01-000.

NOTES:

FOR ELECTRICAL
TORQUE
SPECIFICATIONS
SEE DWG NO.
128783-01-000

X-X
FOR
ELECTRICAL
CALLOUTS
SEE DWG NO.
121339-01-000

265 CODES/STANDARDS-CSA/CMVSS

1B1 CODES/STANDARDS USA

1B1 265

FIRST USED
15 E-SERIES

DO NOT SCALE DRAWING

TITLE:
WIRING INSTL-FRONT END

SHEET 9 PART NO **188246** REV

1 08-Oct-2015

8

7

6

5



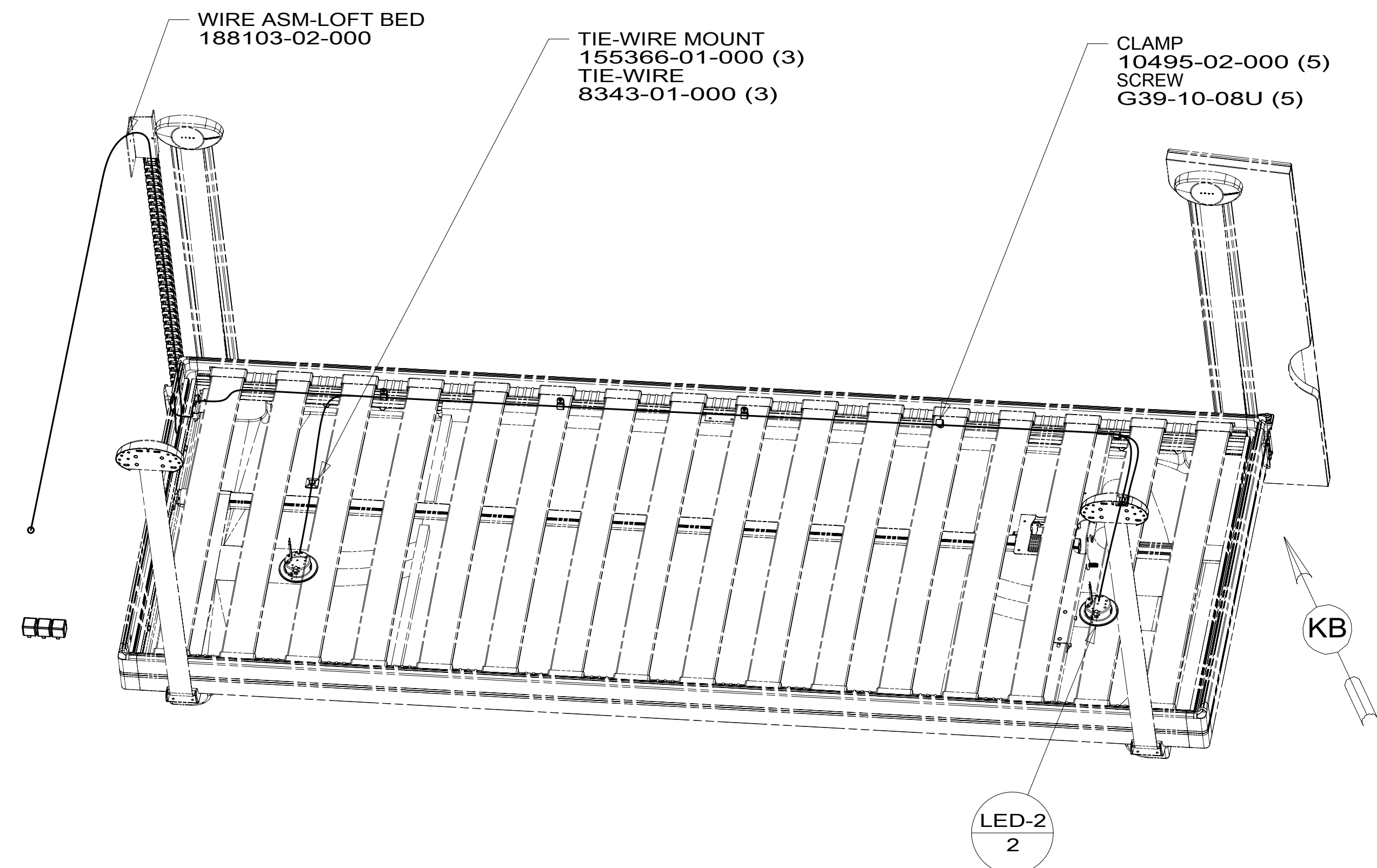
4

3

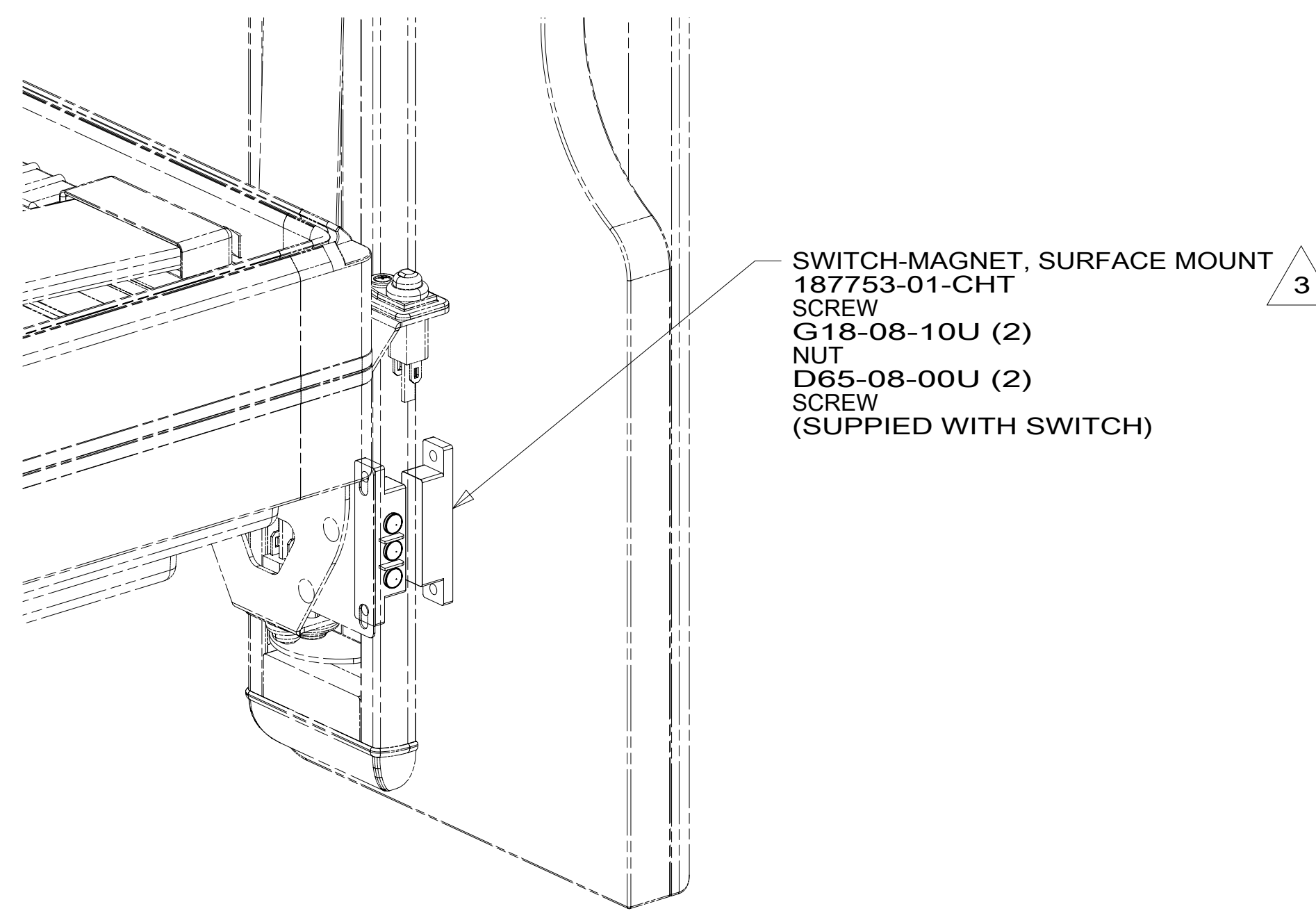
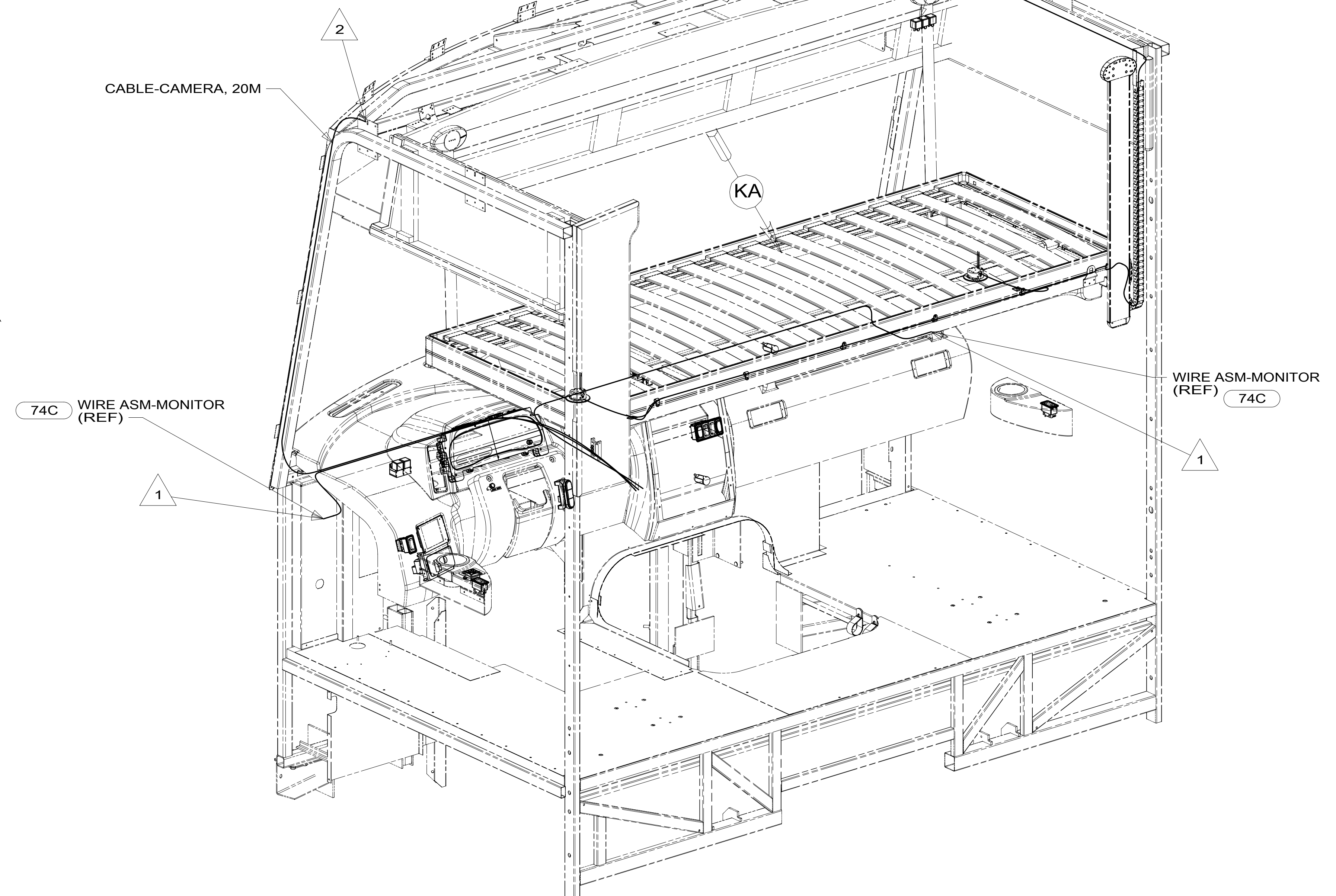
2

1

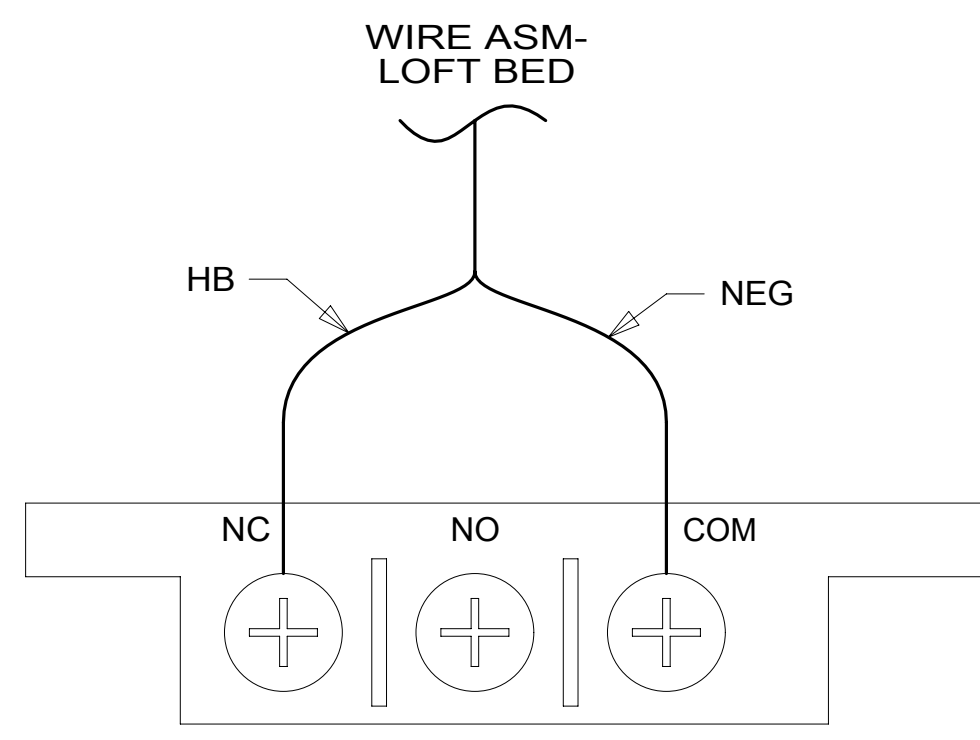
188246



DETAIL KA 45B



DETAIL KB 45B (SWITCH COVER NOT SHOWN)



DETAIL KC

- 45B LOFT BED
- 74C VIDEO CAMERA SYSTEM
- 265 CODES/STANDARDS-CSA/CMVSS
- 1B1 CODES/STANDARDS USA

1B1	265
FIRST USED	
15 E-SERIES	
DO NOT SCALE DRAWING	
TITLE: WIRING INSTL-FRONT END	
SHEET 10	PART NO. 188246 REV
1 08-Oct-2015	

- NOTES:
- 3 SEE DETAIL KC FOR WIRING CONNECTIONS.
 - 2 RUN CABLE THRU LEFT-HAND COVE TO REAR OF UNIT. SEE SHEET 9.
 - 1 CONNECT CAMERA THRU HOLE IN SIDEWALL, PUSH CONNECTOR BACK THRU SIDEWALL, AND SEAL HOLE.

FOR ELECTRICAL TORQUE SPECIFICATIONS SEE DWG NO. 128783-01-000

FOR ELECTRICAL CALLOUTS SEE DWG NO. 121339-01-000

188246